



January 30, 2025

District Supervisor  
Oil Conservation Division, District 1  
1625 North French Drive  
Hobbs, New Mexico 88240

**Re: Remediation and Reclamation Closure Report  
Chevron Mid Continent Business Unit  
Cicada Unit #022H Flowline Release  
Unit Letter D, Section 35, Township 25 South, Range 27 East  
Eddy County, New Mexico  
nAPP2414869489  
DOR: 5/27/2024  
Landowner: BLM**

Sir or Madam:

Tetra Tech, Inc. (Tetra Tech) was contacted by Chevron U.S.A., Inc. (Chevron) to complete remediation activities at a release that occurred at the Cicada Unit #022H (API 30-015-45423). The release footprint is located in Public Land Survey System (PLSS) Unit Letter D, Section 35, Township 25 South, and Range 27 East, in Eddy County, New Mexico (Site). The approximate release point coordinates are 32.093063°, -104.165862°. The Site location is shown on **Figures 1 and 2**.

## BACKGROUND

According to the State of New Mexico Notice of Release report, the release was discovered on May 27, 2024. The release was caused by a pinhole leak from a 4-inch below grade flowline. Approximately 58.5 barrels (bbls) of produced water and 11.9 bbls of crude oil were released on the lease pad, of which approximately 4 bbls of produced water and 1 bbl of oil were recovered. The initial C-141 report was submitted to and approved by the New Mexico Oil Conservation Division (NMOCD) on May 30, 2024, and the release was assigned the Incident ID nAPP2414869489. A copy of the OCD Permitting information with incident details are included in **Appendix A**.

## LAND OWNERSHIP

According to the NMOCD Oil and Gas Map, the Site is located on federal lands managed by the Bureau of Land Management (BLM). A copy of this remediation work plan will be provided to the BLM for approval prior to the initiation of the proposed remediation activities.

## SITE CHARACTERIZATION

A site characterization was performed in accordance with 19.15.29.11 New Mexico State Administrative Code (NMAC) and the guidance document Process Updates re: Submissions of Form C-141 Release Notification and Corrective Actions (12/01/2023). A summary of the site characterization is presented below:

Tetra Tech

901 West Wall St., Suite 100, Midland, TX 79701

Tel 432.682.4559

Fax 432.682.3946

www.tetrattech.com

Remediation Closure Report  
January 30, 2025

Chevron MCBU

Shallowest depth to groundwater beneath the area affected by the release in feet below ground surface (feet bgs)	Between 51 and 75 ft
Method used to determine the depth to ground water	NM OSE iWaters Database Search
Did this release impact groundwater or surface water?	No
<b><u>What is the minimum distance between the closest lateral extents of the release and the following surface areas:</u></b>	
A continuously flowing watercourse or any other significant watercourse	Greater than 5 (mi.)
Any lakebed, sinkhole, or playa lake (measured from the ordinary high-water mark)	Greater than 5 (mi.)
An occupied permanent residence, school, hospital, institution, or church	Greater than 5 (mi.)
A spring or private domestic fresh water well used by less than five households for domestic or stock watering purposes	Between 1 and 5 (mi.)
Any other fresh water well or spring	Between 1 and 5 (mi.)
Incorporated municipal boundaries or a defined municipal fresh water well field	Greater than 5 (mi.)
A wetland	Between ½ and 1 (mi.)
A subsurface mine	Greater than 5 (mi.)
A (non-karst) unstable area	Greater than 5 (mi.)
Categorized risk of this well / site being in a karst geology	High
A 100-year floodplain	Between ½ and 1 (mi.)
Did the release impact areas not on an exploration, development, production, or storage site?	No

According to the New Mexico Office of the State Engineer (NMOSE) reporting system, there is one well within a ½-mile (800-meter) radius of the Site, located approximately 0.43 miles (692 meters) east of the release point. The depth to water is measured at 69 feet below ground surface (bgs). The site characterization data is included in **Appendix B**.

**REGULATORY FRAMEWORK**

Based upon the release footprint and in accordance with Subsection E of 19.15.29.12 NMAC, per 19.15.29.11 NMAC, the site characterization data was used to determine recommended remedial action levels (RRALs) for benzene, toluene, ethylbenzene, and xylene (collectively referred to as BTEX), total petroleum hydrocarbons (TPH), and chlorides in soil.

Based on the site characterization, the remediation RRALs for the Site are as follows:

Constituent	RRAL
Chloride	600 mg/kg
TPH	100 mg/kg
BTEX	50 mg/kg
Benzene	10 mg/kg

## INITIAL RESPONSE AND SITE ASSESSMENT ACTIVITIES

On May 27-29, 2024, Chevron personnel hydroexcavated soils around the release point and the buried lines in order to repair the below grade flowline leak. Approximately 62.5 cubic yards of contaminated soil and water were transported to the R360 Red Bluff facility. On June 5, 2024, a surface (approximately 6-inch) scrape of visibly impacted soils was conducted. Following each phase of the initial response activities, the area was backfilled with clean material to surface grade. Photographic documentation from the initial response activities is included in **Appendix C**. Waste manifests are presented in **Appendix D**. The release extent and initial response extents are presented in **Figure 3**.

Tetra Tech personnel were onsite on June 18, 2024, to conduct release assessment activities on behalf of Chevron. Three (3) hand auger borings (AH-1 through AH-3) were installed within the release footprint in order to vertically delineate the extent. Four hand auger borings (H-1 through H-4) were installed along the perimeter of the release to horizontally delineate the extent.

Due to hand auger refusal encountered at 1.5 feet bgs, vertical delineation was not achieved as a result of the initial assessment activities. Additionally, horizontal delineation was not achieved to the north (H-1). Therefore, Tetra Tech personnel returned to the Site on August 12-13, 2024, to complete delineation of the release. Four trenches (TT-1 through TT-4) were installed within the release footprint, and three additional horizontal sampling locations (H-5 through H-7) were installed along the perimeter of the release. The sampling locations are presented on **Figure 3**.

A total of thirty-six (36) soil samples were collected during the June and August assessment events and submitted to Eurofins Testing in Midland, Texas to be analyzed for TPH by EPA method 8015 modified, BTEX by EPA Method 8021B, and chloride by EPA method 300.

The laboratory analytical results are summarized in Table 1. Analytical results associated with soil sampling locations AH-1/TT-1, AH-2, AH-3, H-1, and TT-4 exceeded the chloride RRAL of 600 mg/kg in sampling intervals ranging from the surface to 1.5 feet bgs. Analytical results associated with sampling locations AH-2 and AH-3 also exceeded the Total TPH RRAL of 100 mg/kg at select sampling intervals from the surface to 1.5 feet bgs. There were no analytical results which exceeded the benzene or Total BTEX RRALs. Analytical results associated with TT-2, which was collected in the excavated and backfilled initial response area, were below Site RRALs for all analyzed constituents.

## REMEDIATION WORK PLAN AND NMOCD APPROVAL

Tetra Tech, on behalf of Chevron, prepared a Remediation Work Plan dated October 1, 2024, to the NMOCD for approval. The Work Plan summarized the assessment results, which indicated that soil chloride and/or TPH concentrations exceed Site RRALs to depths ranging from 1-2 feet bgs in portions of the release extent. The Remediation Work Plan proposed excavating soils to until a representative sample from the walls and bottom of the excavation is below the Site RRALs. The estimated volume of material to be remediated was approximately 155 cubic yards.

The Work Plan was approved by the NMOCD on November 1, 2024, with the following comments:

- *"The remediation plan is approved as written. Responsible party has 90-days (January 30, 2025) to submit to OCD its appropriate or final remediation closure report."*

A copy of the OCD Permitting information with incident details are included in **Appendix A**.

## REMEDIAL ACTIVITIES AND CONFIRMATION SAMPLING

From January 20-23, 2025, Tetra Tech personnel were onsite to supervise the remedial activities proposed in the approved Remediation Work Plan, including excavation, disposal, and confirmation sampling. Prior to confirmation sampling, on January 14, 2025, the NMOCD district office was notified via the OCD Portal

Remediation Closure Report  
January 30, 2025

Chevron MCBU

in accordance with Subsection D of 19.15.29.12 NMAC. Documentation of the associated OCD Permitting detail is included in **Appendix A**.

Impacted soils were excavated as indicated in **Figure 4**. The areas within the release footprint were excavated to depths ranging from 1 to 2 feet below surrounding grade. Due to safety concerns, a 10-foot exclusion zone was established around the deadman wellhead anchor, which is critical to provide stability against potential wellhead movement. Photographs from the excavated areas prior to backfill are provided in **Appendix C**.

All excavated material was transported offsite for proper disposal. Approximately 126 cubic yards of material were transported to the R360 Halfway Facility. Copies of the waste manifests are included in **Appendix D**.

Following excavation, confirmation floor and sidewall samples were collected and submitted for laboratory analysis to verify efficacy of remediation activities. Per the NMOCD-approved confirmation sampling plan, confirmation samples were collected such that each 5-point composite floor and sidewall sample was representative of no more than 300 square feet of excavated area. The base of the excavation was comprised of approximately 2,990 square feet. The exterior sidewalls were comprised of approximately 610 square feet.

Eleven (11) 5-point composite confirmation floor samples and six (6) 5-point composite confirmation sidewall sample locations were collected for laboratory analysis during remedial activities. Confirmation floor sample locations were labeled with "FS"-#. Confirmation sidewall sample locations were labeled with the cardinal direction (N, E, S, W) followed by SW-#. Final excavated areas, depths, and representative confirmation sample locations are indicated in **Figure 4**.

Collected confirmation samples were placed into laboratory-provided sample containers, transferred under chain-of-custody, and analyzed within appropriate holding times by Cardinal. The soil samples were analyzed for TPH (GRO+DRO+MRO) by EPA Method 8015M, BTEX by EPA Method 8021B, and chlorides by SM4500Cl-B. The analytical results were directly compared to the established Site RRALs to demonstrate compliance.

The results of the January 2025 confirmation sampling events are summarized in **Table 2**. Final confirmation soil samples (floor and sidewall) were below applicable cleanup levels for chloride, TPH, and BTEX at all locations. Copies of laboratory analysis and chain-of-custody documentation are included in **Appendix E**.

## CONCLUSION

Chevron respectfully requests closure of the incident based on the confirmation sampling results and remedial activities performed. If you have any questions concerning the remediation activities performed at the Site, please call me at (512) 739-7874 or email at [sam.abbott@tetrattech.com](mailto:sam.abbott@tetrattech.com).

Sincerely,  
**Tetra Tech, Inc.**



Samantha Abbott, PG  
Project Manager



John Faught, GIT  
Project Manager

cc:  
Ms. Kennedy Lincoln – Chevron MCBU



## LIST OF ATTACHMENTS

### Figures:

- Figure 1 – Overview Map
- Figure 2 – Topographic Map
- Figure 3 – Release Assessment Map
- Figure 4 – Remediation Extent and Confirmation Sampling Locations

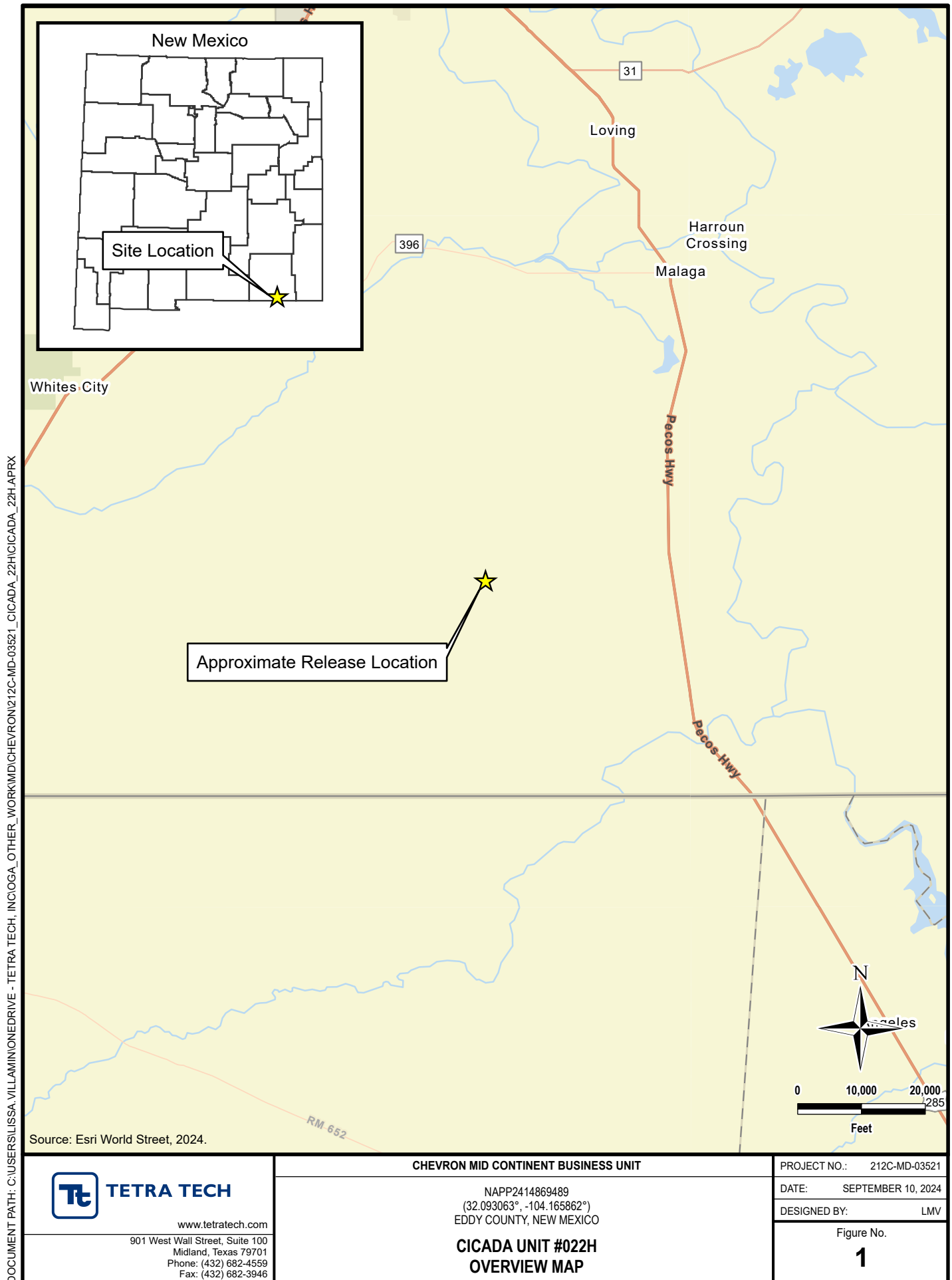
### Tables:

- Table 1 – Summary of Analytical Results – Soil Assessment
- Table 2 – Summary of Analytical Results – Soil Remediation

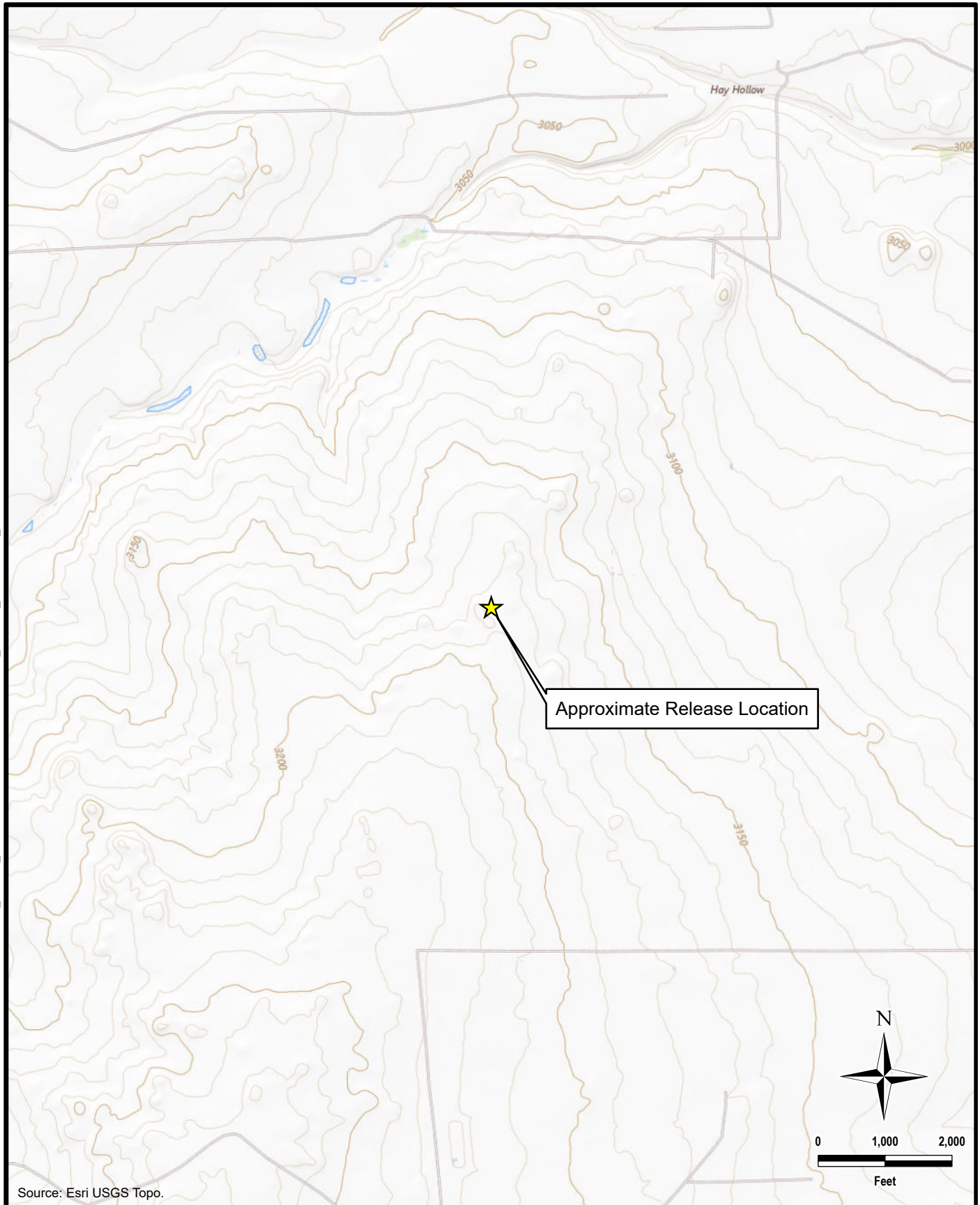
### Appendices:


- Appendix A – OCD Permitting Details
- Appendix B – Site Characterization Data
- Appendix C – Photographic Documentation
- Appendix D – Waste Manifests
- Appendix E – Laboratory Analytical Data

## **FIGURES**

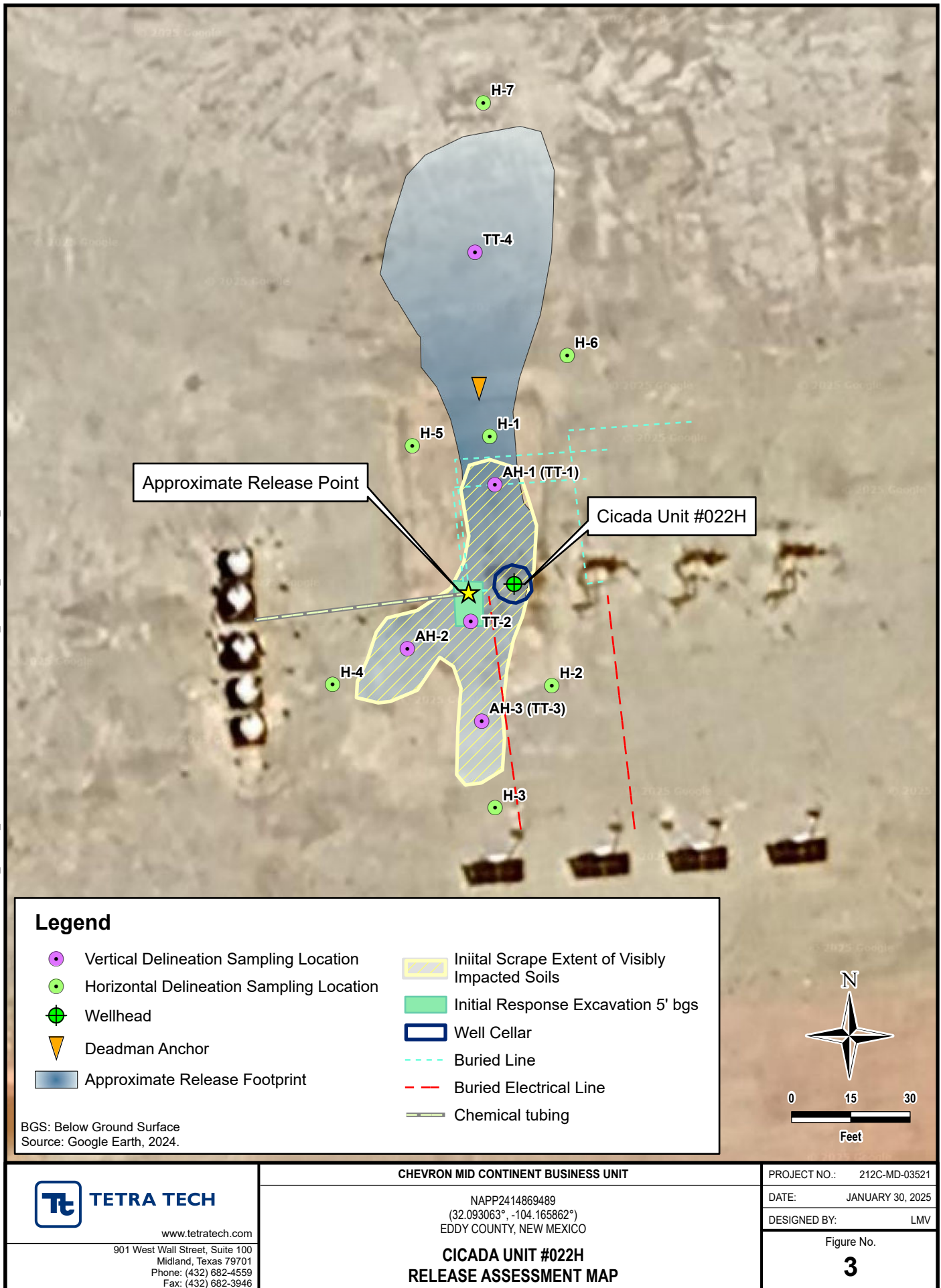


DOCUMENT PATH: C:\USERS\LISSA.VILLAMINIONEDRIVE - TETRA TECH\INCOGA\_OTHER\_WORK\MD\CHEVRON\212C-MD-03521\_CICADA\_22H\APR\_X



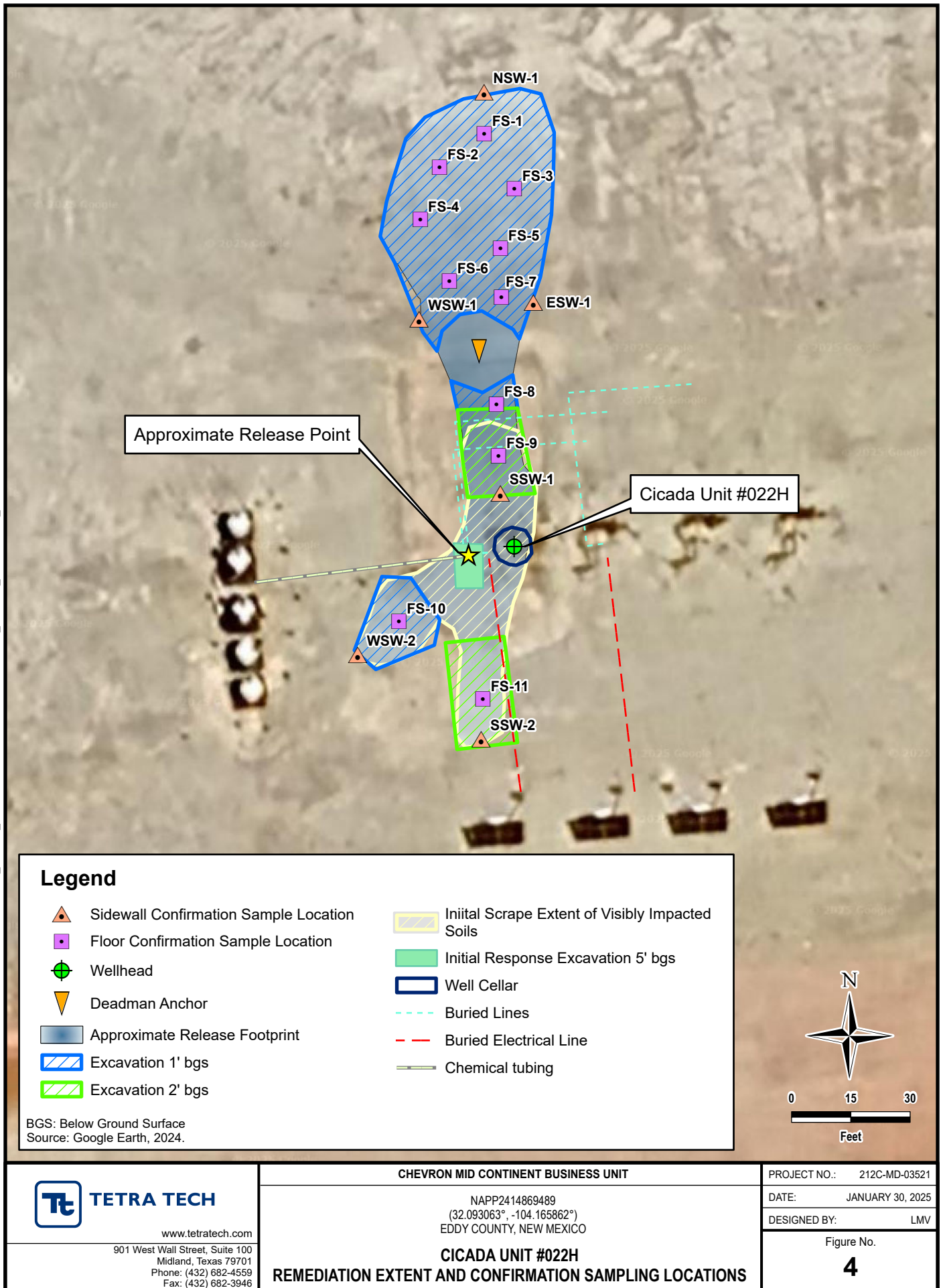
<div><b>TETRA TECH</b></div> <div>www.tetrattech.com</div> <div>901 West Wall Street, Suite 100 Midland, Texas 79701 Phone: (432) 682-4559 Fax: (432) 682-3946</div>	<b>CHEVRON MID CONTINENT BUSINESS UNIT</b>		PROJECT NO.: 212C-MD-03521
	NAPP2414869489 (32.093063°, -104.165862°) EDDY COUNTY, NEW MEXICO		DATE: SEPTEMBER 10, 2024
	<b>CICADA UNIT #022H</b>		DESIGNED BY: LMV
	<b>TOPOGRAPHIC MAP</b>		Figure No. <b>2</b>

DOCUMENT PATH: C:\USERS\LISSA.VILLAMINON\DRIVE - TETRA TECH\INCIOGA\_OTHER\_WORK\MD\CHEVRON\212C-MD-03521\_CICADA\_22H\CICADA\_22H.APRX





DOCUMENT PATH: C:\USERS\LISSA.VILLAMINON\DRIVE - TETRA TECH\INCIOGA\_OTHER\_WORK\MD\CHEVRON\212C-MD-03521\_CICADA\_22H\CICADA\_22H.APRX



## **TABLES**



TABLE 1  
SUMMARY OF ANALYTICAL RESULTS  
SOIL ASSESSMENT - nAPP2414869489 (DOR 5/27/2024)  
CHEVRON MCBU  
CICADA UNIT #022H  
EDDY COUNTY, NEW MEXICO

Sample ID	Sample Date	Sample Depth	Chloride <sup>1</sup>		BTEX <sup>2</sup>								TPH <sup>3</sup>									
					Benzene		Toluene		Ethylbenzene		Total Xylenes		Total BTEX		GRO		DRO		MRO		Total TPH	
		ft. bgs	mg/kg	Q	mg/kg	Q	mg/kg	Q	mg/kg	Q	mg/kg	Q	mg/kg	Q	mg/kg	Q	mg/kg	Q	mg/kg	Q	mg/kg	Q
VERTICAL DELINEATION SAMPLES																						
AH-1	6/18/2024	0-1'	1420		<0.00138	U	<0.00198	U	<0.00108	U	<0.00226	U	<0.00226	U	20.4	J B	25.0	J B	<12.5	U	45.4	J
		1'	1200		<0.00140	U	<0.00201	U	<0.00109	U	<0.00229	U	<0.00229	U	16.0	J B	22.4	J B	<12.5	U	38.4	J
		1.5'	1250		<0.00139	U	<0.00200	U	<0.00109	U	<0.00228	U	<0.00228	U	12.8	J B	19.7	J B	<12.5	U	32.5	J
TT-1	8/13/2024	0-0.5'	643		<0.00139	U	<0.00200	U	<0.00109	U	<0.00228	U	<0.00228	U	<14.7	U	<15.3	U	<15.3	U	<15.3	U
		1'	419		<0.00139	U	<0.00200	U	<0.00109	U	<0.00228	U	<0.00228	U	<14.4	U	<15.0	U	<15.0	U	<15.0	U
		2'	186		<0.00140	U	<0.00201	U	<0.00109	U	<0.00229	U	<0.00229	U	<14.5	U	<15.1	U	<15.1	U	<15.1	U
		3'	182		<0.00138	U	<0.00199	U	<0.00108	U	<0.00227	U	<0.00227	U	<14.5	U	<15.1	U	<15.1	U	<15.1	U
		4'	450		<0.00140	U	<0.00201	U	<0.00110	U	<0.00230	U	<0.00230	U	<14.5	U	59.6		<15.1	U	59.6	
AH-2	6/18/2024	0-1'	623		<0.00139	U	<0.00199	U	<0.00108	U	<0.00228	U	<0.00228	U	<10.9	U	153	B	<12.5	U	153	
		1'	481		<0.00138	U	<0.00199	U	<0.00108	U	<0.00227	U	<0.00227	U	12.6	J B	19.1	J B	<12.4	U	31.7	J
		1.5'	265		<0.00138	U	<0.00198	U	<0.00108	U	<0.00227	U	<0.00227	U	35.1	J B	33.8	J B	<12.5	U	68.9	
TT-2	8/13/2024	0-0.5'	116		<0.00139	U	<0.00200	U	<0.00109	U	<0.00228	U	<0.00228	U	<14.6	U	<15.3	U	<15.3	U	<15.3	U
		1'	153		<0.00139	U	<0.00200	U	<0.00109	U	<0.00229	U	<0.00229	U	<14.6	U	<15.2	U	<15.2	U	<15.2	U
		2'	159		<0.00139	U	<0.00200	U	<0.00109	U	<0.00228	U	<0.00228	U	<14.4	U	<15.0	U	<15.0	U	<15.0	U
		3'	222		<0.00138	U	<0.00199	U	<0.00108	U	<0.00227	U	<0.00227	U	<14.4	U	<15.0	U	<15.0	U	<15.0	U
		4'	241		<0.00140	U	<0.00201	U	<0.00109	U	<0.00229	U	<0.00229	U	<14.5	U	<15.1	U	<15.1	U	<15.1	U
AH-3	6/18/2024	0-1'	326		<0.00140	U	<0.00201	U	0.00780		<0.00229	U	0.00780		14.6	J B	496	B	<12.5	U	511	
		1'	1270		<0.00140	U	<0.00201	U	<0.00109	U	0.0244		0.0244		20.6	J B	39.7	J B	<12.5	U	60.3	
		1.5'	550		<0.00139	U	<0.00199	U	0.00309		<0.00228	U	0.00309	J	16.7	J B	366	B	<12.5	U	383	
TT-3	8/13/2024	0-0.5'	139		<0.00140	U	<0.00201	U	<0.00110	U	<0.00230	U	<0.00230	U	<14.5	U	<15.1	U	<15.1	U	<15.1	U
		1'	185		<0.00138	U	<0.00199	U	<0.00108	U	<0.00227	U	<0.00227	U	<14.4	U	<15.0	U	<15.0	U	<15.0	U
		2'	137		<0.00139	U	<0.00200	U	<0.00109	U	<0.00229	U	<0.00229	U	<14.6	U	<15.2	U	<15.2	U	<15.2	U
		3'	130		<0.00140	U	<0.00201	U	0.00110	J	<0.00229	U	<0.00229	U	<14.6	U	<15.3	U	<15.3	U	<15.3	U
		4'	119		<0.00139	U	<0.00200	U	<0.00109	U	<0.00228	U	<0.00228	U	<14.7	U	<15.3	U	<15.3	U	<15.3	U
TT-4	8/12/2024	0-0.5'	811		<0.00138	U	<0.00199	U	<0.00108	U	0.00609		0.00609		<14.4	U	38.5	J	<15.0	U	38.5	J
		1'	745		<0.00140	U	<0.00201	U	0.00165	J	0.00546		0.00711		<14.5	U	93.7		<15.1		93.7	
		2'	309		<0.00139	U	<0.00200	U	<0.00109	U	<0.00228	U	<0.00228	U	<14.4	U	<15.0	U	<15.0	U	<15.0	U
		3'	192		<0.00139	U	<0.00200	U	<0.00109	U	0.0893		0.0893		<14.4	U	17.4	J	<15.0	U	17.4	J
		4'	101	F1	<0.00139		<0.00200	U	<0.00109	U	0.00228	U	<0.00228	U	<14.5	U	<15.1	U	<15.1	U	<15.1	U
H-1	6/18/2024	0-1'	622		<0.00139	U	<0.00199	U	<0.00108	U	<0.00228	U	<0.00228	U	<10.9	U	37.0	J B	<12.5	U	37.0	J
HORIZONTAL DELINEATION SAMPLES																						
H-2	6/18/2024	0-1'	521		<0.00139	U	<0.00200	U	0.00148	J	0.0385		0.0400		<11.0	U	36.3	J B	<12.5	U	36.3	J
H-3	6/18/2024	0-1'	430		<0.00139	U	<0.00200	U	<0.00109	U	<0.00229	U	<0.00229	U	14.9	J B	<14.9	U	<12.5	U	14.9	J
H-4	6/18/2024	0-1'	574		<0.00141	U	<0.00202	U	<0.00110	U	<0.00231	U	<0.00231	U	16.0	J B	<15.0	U	<12.5	U	16.0	J
H-5	8/13/2024	0-1'	184		<0.00140	U	<0.00201	U	<0.00109	U	<0.00229	U	<0.00229	U	<14.6	U	<15.2	U	<15.2	U	<15.2	U
H-6	8/13/2024	0-1'	285		<0.00139	U	<0.00200	U	0.00183	J	0.00242	J	0.00425		<14.6	U	<15.2	U	<15.2	U	<15.2	U
H-7	8/13/2024	0-1'	451		<0.00140	U	<0.00201	U	<0.00110	U	<0.00230	U	<0.00230	U	<14.6	U	<15.3	U	<15.3	U	<15.3	U

NOTES:

ft. Feet

bgs Below ground surface

mg/kg Milligrams per kilogram

TPH Total Petroleum Hydrocarbons

GRO Gasoline range organics

DRO Diesel range organics

MRO Motor Oil range organics

NS Sample not analyzed for parameter

<sup>1</sup> EPA Method 300.0

<sup>2</sup> EPA Method 8021B

<sup>3</sup> Method SW8015 Mod

Shaded intervals are proposed for excavation

Qualifiers: B Compound was found in the blank and sample.

F1 MS and/or MSD recovery exceeds control limits.

J Result is less than the RL but greater than or equal to the MDL and the concentration is an approximate value.

U Indicates the analyte was analyzed for but not detected.

TABLE 2  
SUMMARY OF ANALYTICAL RESULTS  
SOIL REMEDIATION - NAPP2414869489 (DOR 5/27/2024)  
CHEVRON MCBU  
CICADA UNIT #022H  
EDDY COUNTY, NEW MEXICO

Sample ID	Sample Date	Sample Depth	Chloride <sup>1</sup>	BTEX <sup>2</sup>					TPH <sup>3</sup>			
				Benzene	Toluene	Ethylbenzene	Total Xylenes	Total BTEX	GRO	DRO	MRO	Total TPH
		ft. bgs	mg/kg	mg/kg	mg/kg	mg/kg	mg/kg	C <sub>6</sub> - C <sub>10</sub>	> C <sub>10</sub> - C <sub>28</sub>	> C <sub>28</sub> - C <sub>36</sub>	(GRO+DRO+EXT DRO)	
Reclamation Closure Criteria for Surface (0-4 ft bgs) Soils:			600 mg/kg	10 mg/kg	--	--	--	50 mg/kg	--	--	--	100 mg/kg
Site RRALs for Subsurface (>4 ft bgs) Soils (GW <50 ft):			600 mg/kg	10 mg/kg	--	--	--	50 mg/kg	--	--	--	100 mg/kg
FS-1	1/21/2025	1'	240	<0.050	<0.050	<0.050	<0.150	<0.300	<10.0	<10.0	<10.0	-
FS-2	1/21/2025	1'	272	<0.050	<0.050	<0.050	<0.150	<0.300	<10.0	<10.0	<10.0	-
FS-3	1/21/2025	1'	48.0	<0.050	<0.050	<0.050	<0.150	<0.300	<10.0	<10.0	<10.0	-
FS-4	1/21/2025	1'	80.0	<0.050	<0.050	<0.050	<0.150	<0.300	<10.0	<10.0	<10.0	-
FS-5	1/21/2025	1'	144	<0.050	<0.050	<0.050	<0.150	<0.300	<10.0	<10.0	<10.0	-
FS-6	1/21/2025	1'	48.0	<0.050	<0.050	<0.050	<0.150	<0.300	<10.0	<10.0	<10.0	-
FS-7	1/21/2025	1'	48.0	<0.050	<0.050	<0.050	<0.150	<0.300	<10.0	<10.0	<10.0	-
FS-8	1/21/2025	1'	160	<0.050	<0.050	<0.050	<0.150	<0.300	<10.0	<10.0	<10.0	-
FS-9	1/21/2025	2'	32.0	<0.050	<0.050	<0.050	<0.150	<0.300	<10.0	<10.0	<10.0	-
FS-10	1/21/2025	1'	32.0	<0.050	<0.050	<0.050	<0.150	<0.300	<10.0	<10.0	<10.0	-
FS-11	1/21/2025	2'	32.0	<0.050	<0.050	<0.050	<0.150	<0.300	<10.0	<10.0	<10.0	-
NSW-1	1/21/2025	-	256	<0.050	<0.050	<0.050	<0.150	<0.300	<10.0	<10.0	<10.0	-
ESW-1	1/21/2025	-	256	<0.050	<0.050	<0.050	<0.150	<0.300	<10.0	<10.0	<10.0	-
WSW-1	1/21/2025	-	112	<0.050	<0.050	<0.050	<0.150	<0.300	<10.0	<10.0	<10.0	-
WSW-2	1/21/2025	-	32.0	<0.050	<0.050	<0.050	<0.150	<0.300	<10.0	<10.0	<10.0	-
SSW-1	1/21/2025	-	32.0	<0.050	<0.050	<0.050	<0.150	<0.300	<10.0	<10.0	<10.0	-
SSW-2	1/21/2025	-	128	<0.050	<0.050	<0.050	<0.150	<0.300	<10.0	<10.0	<10.0	-

NOTES:

- ft. Feet
- bgs Below ground surface
- mg/kg Milligrams per kilogram
- TPH Total Petroleum Hydrocarbons
- GRO Gasoline range organics
- DRO Diesel range organics
- 1 Method SM4500Cl-B
- 2 Method 8021B
- 3 Method 8015M

## **APPENDIX A**

### **OCD Permitting Details**

OCD Permitting

Home    Searches    Incidents    Incident Details

NAPP2414869489 CICADA UNIT #022H @ 30-015-45423

General Incident Information

Site Name:

CICADA UNIT #022H

Well:

[\[30-015-45423\]](#) CICADA UNIT #022H

Facility:

Operator:

[\[4323\]](#) CHEVRON U S A INC

Status:

Remediation Plan Approved, Pending submission of Remediation Closure Report from the operator

Type:

Produced Water Release

Severity:

Major

Surface Owner:

Federal

County:

Eddy (15)

District:

Artesia

Incident Location:

D-35-25S-27E    0 FNL    0 FEL

Lat/Long:

32.093063,-104.165862 NAD83

Directions:

Notes

Source of Referral:

Industry Rep

Action / Escalation:

Resulted In Fire:

☐

Resulted In Injury:

☐

Endangered Public Health:

☐

Will or Has Reached Watercourse:

☐

Fresh Water Contamination:

☐

Property Or Environmental Damage:

☐

Contact Details

Contact Name:

Contact Title:

Event Dates

Date of Discovery:

05/27/2024

Initial C-141 Report Due:

6/11/2024

Remediation Closure Report Due:

01/30/2025

Incident Dates

Type	Action	Received	Denied	Approved
Remediation Closure Report Extension		08/14/2024		08/14/2024
Sampling Notice	<a href="#">[420477]</a>	01/14/2025		01/14/2025
Remediation Plan	<a href="#">[393381]</a>	10/17/2024		11/01/2024
Site Characterization	<a href="#">[393381]</a>	10/17/2024		11/01/2024
Initial C-141 Report	<a href="#">[349395]</a>	05/30/2024		05/30/2024
Notification	<a href="#">[348063]</a>	05/27/2024		05/27/2024

Quic

- [Gene](#)
- [Mater](#)
- [Event](#)
- [Order](#)
- [Actio](#)

Assc

- [Incide](#)
- [Well f](#)

New

- [New I](#)
- [New I](#)
- [New \(](#)
- [New I](#)
- [New :](#)
- [New "](#)
- [New \](#)

Incident Materials

Cause	Source	Material	Volume				Units
			Unk.	Released	Recovered	Lost	
Corrosion	Flow Line - Production	Crude Oil	<input type="checkbox"/>	12	1	11	BBL
Corrosion	Flow Line - Production	Produced Water	<input type="checkbox"/>	59	4	55	BBL
The concentration of dissolved chloride in the produced water >10,000 mg/l: <input checked="" type="checkbox"/> Yes <input type="checkbox"/> No							

Incident Events

Date	Detail
01/14/2025	The (01/14/2025, C-141N) application <a href="#">[420477]</a> was assigned to this incident.
11/01/2024	App ID 393381: The remediation plan is approved as written. Responsible party has 90-days (January 30, 2025) to submit to OCD its appropriate or final remediation closure report.
11/01/2024	The (11/01/2024, C-141) application <a href="#">[393381]</a> was accepted by OCD. The operator was emailed with details of this event.
11/01/2024	An application <a href="#">[393381]</a> was submitted to OCD for review. It was submitted, indicating that it was an: [C-141] Application for administrative approval of a release notification and corrective action The operator was emailed confirmation of this event.
10/17/2024	The (11/01/2024, C-141) application <a href="#">[393381]</a> was assigned to this incident.
10/08/2024	The (10/10/2024, C-141) application <a href="#">[390930]</a> was assigned to this incident.
08/14/2024	Your request for a 90 day extension to November 12th, 2024 is approved. Please include this e-mail correspondence in the remediation and/or closure report.
08/14/2024	I am reaching out to request an extension for the workplan submittal for incident ID (n#) nAPP2414869489 at Cicada 022H. The reason I am requesting an extension for this incident number is because we have two spills (nAPP2414869489 and nAPP2420727981) on the same pad, and we would like to make a workplan that will allow the remediation of both areas to be done at the same time. We have currently delineated the impacted area for both spills and are waiting for the sampling information to come back from the lab.
05/30/2024	The (05/30/2024, C-141) application <a href="#">[349395]</a> was accepted by OCD. The operator was emailed with details of this event.
05/30/2024	An application <a href="#">[349395]</a> was submitted to OCD for review. It was submitted, indicating that it was an: [C-141] Application for administrative approval of a release notification and corrective action The operator was emailed confirmation of this event.
05/30/2024	The (05/30/2024, C-141) application <a href="#">[349395]</a> was assigned to this incident.
05/27/2024	The (05/27/2024, NOR) application <a href="#">[348063]</a> was assigned to this incident.
05/27/2024	Release discovered by the operator.
05/27/2024	New incident created by the operator, upon the submission of notification of release.

Incident Corrective Actions

Initial Response

☒ The source of the release has been stopped.

☒ The impacted area has been secured to protect human health and the environment.

☒ Released materials have been contained via the use of berms or dikes, absorbent pads, or other containment devices.

☒ All free liquids and recoverable materials have been removed and managed appropriately.

If all the actions described above have not been undertaken, explain why:

Site Characterization

What is the shallowest depth to groundwater beneath the area affected by the release?	Between 51 and 75 (ft.)   bgs
What method was used to determine the depth to ground water?	NM OSE iWaters Database Search
Did this release impact groundwater or surface water?	<input type="checkbox"/> Yes <input checked="" type="checkbox"/> No
Are the lateral extents of the release within 300 feet of a continuously flowing watercourse or any other significant watercourse?	Greater than 5 (mi.)
Are the lateral extents of the release within 200 feet of any lakebed, sinkhole, or playa lake (measured from the ordinary high-water mark)?	Greater than 5 (mi.)
Are the lateral extents of the release within 300 feet of an occupied permanent residence, school, hospital, institution, or church?	Greater than 5 (mi.)
Are the lateral extents of the release within 500 horizontal feet of a spring or a private domestic fresh water well used by less than five households for domestic or stock watering purposes?	Between 1 and 5 (mi.)
Are the lateral extents of the release within 1000 feet of any other fresh water well or spring?	Between 1 and 5 (mi.)
Are the lateral extents of the release within incorporated municipal boundaries or within a defined municipal fresh water well field?	Greater than 5 (mi.)
Are the lateral extents of the release within 300 feet of a wetland?	Between ½ and 1 (mi.)
Are the lateral extents of the release overlying a subsurface mine?	Greater than 5 (mi.)
Are the lateral extents of the release overlying an (non-karst) unstable area?	Greater than 5 (mi.)
Categorize the risk of this well / site being in a karst geology?	High
Are the lateral extents of the release within a 100-year floodplain?	Between ½ and 1 (mi.)
Did the release impact areas not on an exploration, development, production, or storage site?	<input type="checkbox"/> Yes <input checked="" type="checkbox"/> No

Remediation Plan

Have the lateral and vertical extents of contamination been fully delineated?	<input checked="" type="checkbox"/> Yes <input type="checkbox"/> No	
Was this release entirely contained within a lined containment area?	<input type="checkbox"/> Yes <input checked="" type="checkbox"/> No	
Chloride ***	(EPA 300.0 or SM4500 Cl B)	1420   (mg/kg)
TPH (GRO+DRO+MRO)	(EPA SW-846 Method 8015M)	511   (mg/kg)
GRO+DRO	(EPA SW-846 Method 8015M)	510   (mg/kg)
BTEX	(EPA SW-846 Method 8021B or 8260B)	0   (mg/kg)
Benzene	(EPA SW-846 Method 8021B or 8260B)	0   (mg/kg)
On what estimated date will the remediation commence?	12/02/2024	
On what date will (or did) the final sampling occur?	12/13/2024	

What is the estimated volume (in cubic yards) that will be remediated?	155    (cu yds)
--	-----------------

This remediation will (or is expected to) utilize the following processes to remediate / reduce contaminants:

<input checked="" type="checkbox"/> (Ex Situ) Excavation and <b>off-site</b> disposal (i.e. dig and haul, hydrovac, etc.)
Is the <b>off-site</b> disposal site, to be used, out-of-state? True Red Bluff Facility
<input type="checkbox"/> OTHER (Non-listed remedial process)?

No active remediation deferral request was found for this incident.

No remediation closure report data was found for this incident.

No reclamation report data was found for this incident.

No re-vegetation report data was found for this incident.

Orders

No Orders Found



## **APPENDIX B**

### **Site Characterization Data**

## **Site Characterization Summary**

### **Site Information:**

Chevron MCBU  
Cicada Unit 022H  
Eddy County, New Mexico  
T25S, R27E, Section 35, Unit D  
(32.093063°, -104.165862°)

### **Site Characterization:**

- High Karst
- No significant water features within specified distances
- Groundwater 69' BGS 0.43 Miles Northeast. (NMOSE, POD C-04371-POD1, 2019 Sample)

### **RRALs:**

- 600 mg/kg Chlorides
- 100 mg/kg Total TPH
- 10 mg/kg Benzene
- 50 mg/kg Total BTEX




### **Explanation:**


Due to the Cicada Unit 022H location within a high karst area.

# Cicada Unit #022H

Karst Map

## Legend

-  Cicada Unit #022H
-  High
-  Low

 Cicada Unit #022H



# National Flood Hazard Layer FIRMette



104°10'16"W 32°5'50"N



0 250 500 1,000 1,500 2,000 Feet

1:6,000

104°9'38"W 32°5'20"N

Released to Imaging: 5/16/2025 9:07:05 AM

Basemap Imagery Source: USGS National Map 2023

## Legend

SEE FIS REPORT FOR DETAILED LEGEND AND INDEX MAP FOR FIRM PANEL LAYOUT

SPECIAL FLOOD HAZARD AREAS		Without Base Flood Elevation (BFE) Zone A, V, A99
		With BFE or Depth Zone AE, AO, AH, VE, AR
		Regulatory Floodway
OTHER AREAS OF FLOOD HAZARD		0.2% Annual Chance Flood Hazard, Areas of 1% annual chance flood with average depth less than one foot or with drainage areas of less than one square mile Zone X
		Future Conditions 1% Annual Chance Flood Hazard Zone X
		Area with Reduced Flood Risk due to Levee. See Notes. Zone X
		Area with Flood Risk due to Levee Zone D
OTHER AREAS		NO SCREEN Area of Minimal Flood Hazard Zone X
		Effective LOMRs
		Area of Undetermined Flood Hazard Zone D
GENERAL STRUCTURES		Channel, Culvert, or Storm Sewer
		Levee, Dike, or Floodwall
OTHER FEATURES		20.2 Cross Sections with 1% Annual Chance Water Surface Elevation
		17.5 Cross Sections with 1% Annual Chance Water Surface Elevation
		Coastal Transect
		Base Flood Elevation Line (BFE)
		Limit of Study
		Jurisdiction Boundary
		Coastal Transect Baseline
		Profile Baseline
		Hydrographic Feature
		Digital Data Available
MAP PANELS		No Digital Data Available
		Unmapped



The pin displayed on the map is an approximate point selected by the user and does not represent an authoritative property location.

This map complies with FEMA's standards for the use of digital flood maps if it is not void as described below. The basemap shown complies with FEMA's basemap accuracy standards

The flood hazard information is derived directly from the authoritative NFHL web services provided by FEMA. This map was exported on 6/20/2024 at 4:34 PM and does not reflect changes or amendments subsequent to this date and time. The NFHL and effective information may change or become superseded by new data over time.

This map image is void if the one or more of the following map elements do not appear: basemap imagery, flood zone labels, legend, scale bar, map creation date, community identifiers, FIRM panel number, and FIRM effective date. Map images for unmapped and unmodernized areas cannot be used for regulatory purposes.



# New Mexico Office of the State Engineer

## Water Column/Average Depth to Water

(A CLW##### in the POD suffix indicates the POD has been replaced & no longer serves a water right file.)

(R=POD has been replaced,  
O=orphaned,  
C=the file is closed)

(quarters are 1=NW 2=NE 3=SW 4=SE)

(quarters are smallest to largest)

(NAD83 UTM in meters)

(In feet)

POD Number	POD Sub-Code	basin	County	Q 64	Q 16	Q 4	Sec	Tws	Rng	X	Y	Distance	Depth Well	Depth Water	Water Column
<a href="#">C 04371 POD1</a>	CUB	ED		3	3	4	26	25S	27E	579369	3551272	692	100	69	31

Average Depth to Water: **69 feet**

Minimum Depth: **69 feet**

Maximum Depth: **69 feet**

Record Count: 1

### UTMNAD83 Radius Search (in meters):

**Easting (X):** 578711.206

**Northing (Y):** 3551054.94

**Radius:** 1600

The data is furnished by the NMOSE/ISC and is accepted by the recipient with the expressed understanding that the OSE/ISC make no warranties, expressed or implied, concerning the accuracy, completeness, reliability, usability, or suitability for any particular purpose of the data.

6/20/24 2:27 PM

Page 1 of 1

WATER COLUMN/ AVERAGE  
DEPTH TO WATER



# New Mexico Office of the State Engineer

## Point of Diversion Summary

		(quarters are 1=NW 2=NE 3=SW 4=SE)						(quarters are smallest to largest)		(NAD83 UTM in meters)			
Well Tag	POD Number	Q64	Q16	Q4	Sec	Tws	Rng	X	Y				
NA	C 04371 POD1	3	3	4	26	25S	27E	579369	3551272				
Driller License:		1456		Driller Company:		WHITE DRILLING COMPANY							
Driller Name:		WHITE, JOHNNOWN.GENER											
Drill Start Date:		10/17/2019		Drill Finish Date:		10/17/2019		Plug Date:		10/17/2019			
Log File Date:		11/04/2019		PCW Rev Date:				Source:		Shallow			
Pump Type:				Pipe Discharge Size:				Estimated Yield:					
Casing Size:				Depth Well:		100 feet		Depth Water:		69 feet			
Water Bearing Stratifications:				Top	Bottom	Description							
				5	100	Other/Unknown							

The data is furnished by the NMOSE/ISC and is accepted by the recipient with the expressed understanding that the OSE/ISC make no warranties, expressed or implied, concerning the accuracy, completeness, reliability, usability, or suitability for any particular purpose of the data.

6/20/24 2:22 PM

POINT OF DIVERSION SUMMARY

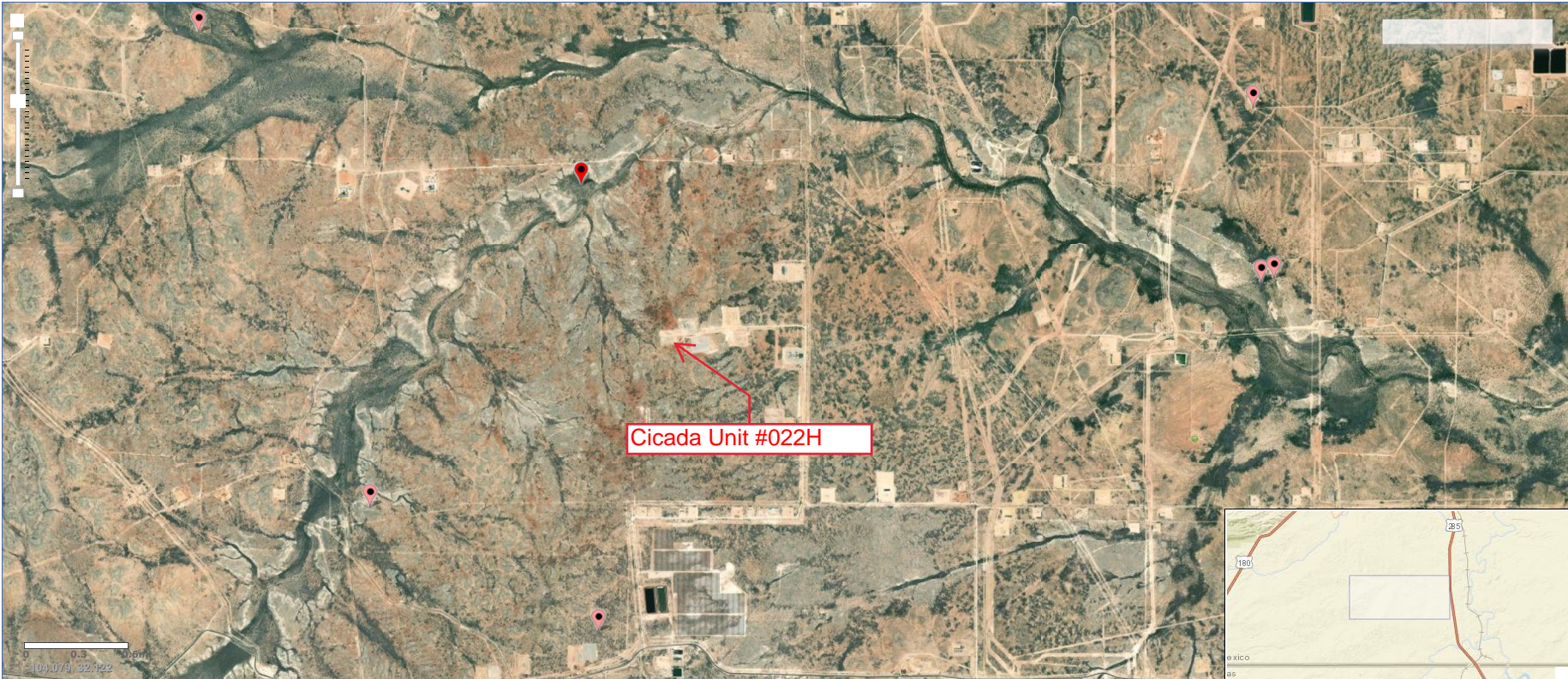




National Water Information System: Mapper

[USGS Home](#)  
[Contact USGS](#)  
[Search USGS](#)

[Help](#) [Info](#)



Site Information





U.S. Fish and Wildlife Service

## National Wetlands Inventory



## Cicada Unit 022H






U.S. Fish and Wildlife Service, National Standards and Support Team,  
wetlands\_team@fws.gov

June 20, 2024

## Wetlands

-  Estuarine and Marine Deepwater
-  Estuarine and Marine Wetland

-  Freshwater Emergent Wetland
-  Freshwater Forested/Shrub Wetland
-  Freshwater Pond

-  Lake
-  Other
-  Riverine

This map is for general reference only. The US Fish and Wildlife Service is not responsible for the accuracy or currentness of the base data shown on this map. All wetlands related data should be used in accordance with the layer metadata found on the Wetlands Mapper web site.

## **APPENDIX C**

# **Photographic Documentation**





TETRA TECH, INC. PROJECT NO. 212C-MD-03745	DESCRIPTION	View north. Initial response excavation to repair the below grade flowline leak.	1
	SITE NAME	Cicada #022H Flowline Release	5/29/2024



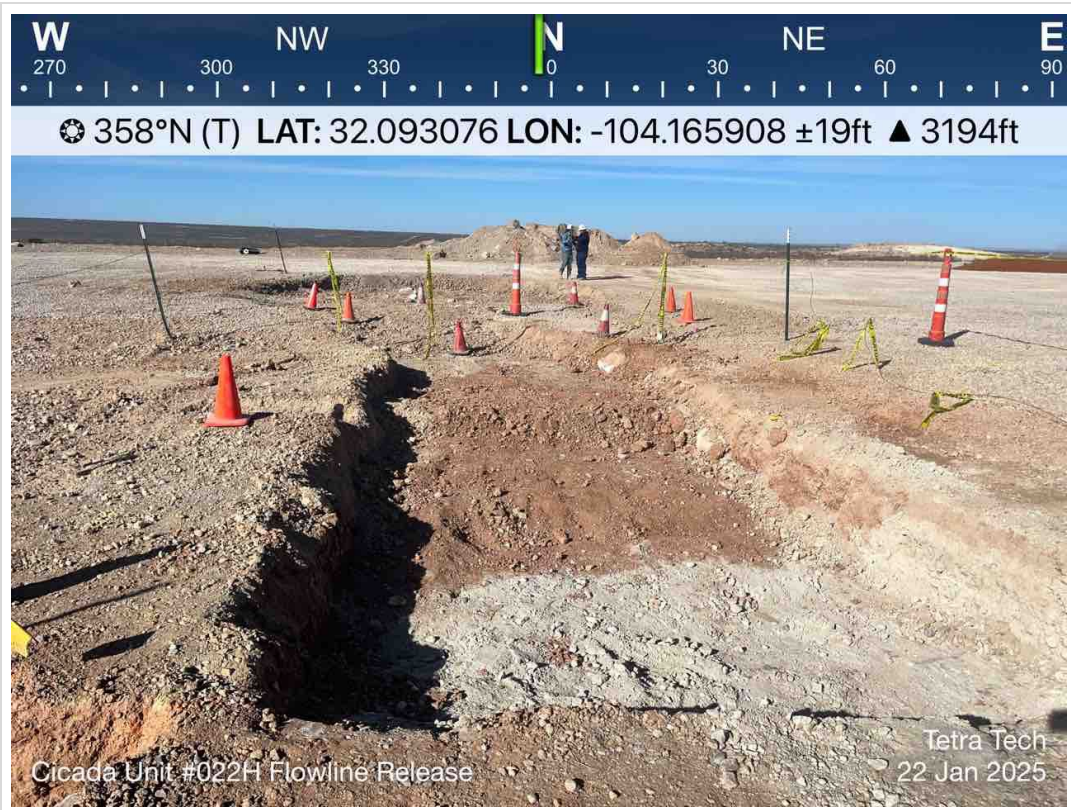


TETRA TECH, INC. PROJECT NO. 212C-MD-03745	DESCRIPTION	View north-northwest. Southern 2-foot excavation in area of confirmation samples FS-11 and SSW-2.	2
	SITE NAME	Cicada #022H Flowline Release	1/22/2025

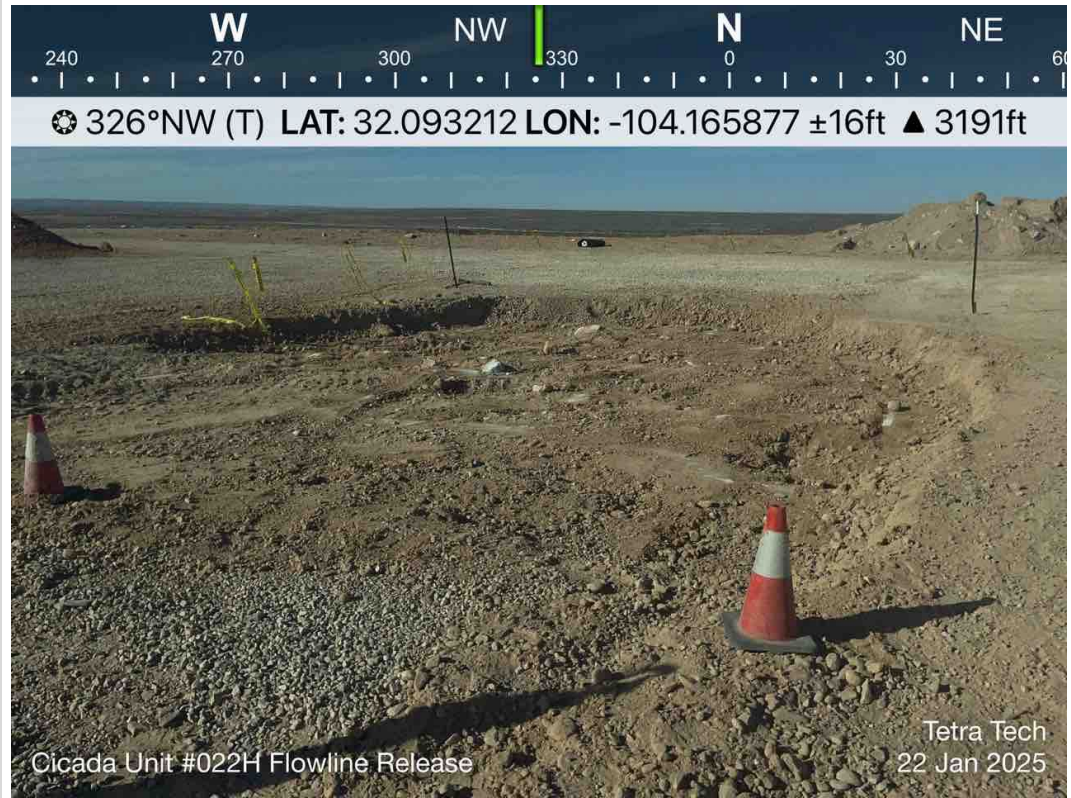


TETRA TECH, INC. PROJECT NO. 212C-MD-03745	DESCRIPTION	View northeast. Southwestern 1-foot excavation in area of confirmation samples FS-10 and WSW-2.	3
	SITE NAME	Cicada #022H Flowline Release	1/22/2025



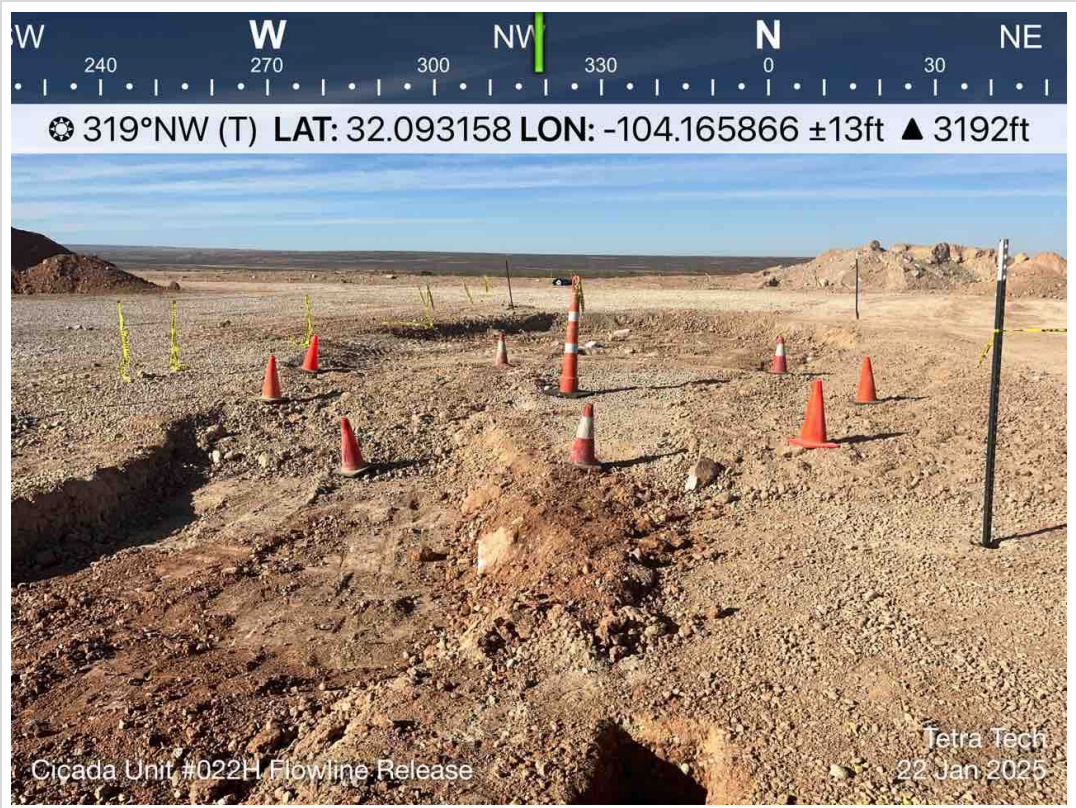


TETRA TECH, INC. PROJECT NO. 212C-MD-03745	DESCRIPTION	View north. Northern 2-foot excavation in area of confirmation samples FS-9 and SSW-1.	4
	SITE NAME	Cicada #022H Flowline Release	1/22/2025



TETRA TECH, INC. PROJECT NO. 212C-MD-03745	DESCRIPTION	View northwest. Northern 1-foot excavation in area of confirmation samples FS-1 through FS-7, NWS-1, ESW-1, and WSW-1.	5
	SITE NAME	Cicada #022H Flowline Release	1/22/2025





TETRA TECH, INC. PROJECT NO. 212C-MD-03745	DESCRIPTION	View northwest. Northern 1-foot excavation in area of confirmation sample FS-8. Dead man anchor and exclusion zone marked with cones.	6
	SITE NAME	Cicada #022H Flowline Release	1/22/2025

## **APPENDIX D**

### **Waste Manifests**





## TEXAS NON-HAZARDOUS OILFIELD WASTE MANIFEST

(PLEASE PRINT)

\*REQUIRED INFORMATION\*

Company/Man Contact Information

Name

Phone No.

Coston Kizer

CAE-URWT

## GENERATOR

NO. 336407

Operator No. \_\_\_\_\_

Permit/RRC No. \_\_\_\_\_

Operators Name Olivier Con

Lease/Well

Name & No. 336407

Address \_\_\_\_\_

County

API No. 30-015-44.345

City, State, Zip \_\_\_\_\_

Rig Name & No. CC-UCRE13400

Phone No. \_\_\_\_\_

AFE/PO No. \_\_\_\_\_

## EXEMPT E&amp;P Waste/Service Identification and Amount (place volume next to waste type in barrels or cubic yards)

Oil Based Muds	_____	NON-INJECTABLE WATERS	Washout Water (Non-Injectable)	_____	OTHER EXEMPT WASTES (type and generation process of the waste)
Oil Based Cuttings	_____		Completion Fluid/Flow Back (Non-Injectable)	_____	
Water Based Muds	_____		Produced Water (Non-Injectable)	_____	
Water Based Cuttings	_____		Gathering Line Water/Waste (Non-Injectable)	_____	
Produced Formation Solids	_____			_____	
Tank Bottoms	_____	INTERNAL USE ONLY			
E&P Contaminated Soil	_____				
Gas Plant Waste	_____	Truck Washout (exempt waste)	_____		

WASTE GENERATION PROCESS: ☐ DRILLING ☐ COMPLETION ☐ PRODUCTION ☐ GATHERING LINES

## NON-EXEMPT E&amp;P Waste/Service Identification and Amount

All non-exempt E&amp;P waste must be analysed and be below threshold limits for toxicity (TCLP), Ignitability, Corrosivity and Reactivity.

Non-Exempt Other \_\_\_\_\_ \*please select from Non-Exempt Waste List on back

QUANTITY B-BARRELS 125 Y-YARDS E-EACH

I hereby certify that the above listed material(s) is (are) not hazardous waste as defined by 40 CFR Part 261 or any applicable state law. That each waste has been properly described, classified and packaged, and is in proper condition for transportation according to applicable regulation.

☒ RCRA EXEMPT.

Oil field wastes generated from oil and gas exploration and production operation and are not mixed with non-exempt waste (R360 Accepts certifications on a per load basis only)

☐ RCRA NON-EXEMPT.

Oil field waste which is non-hazardous that does not exceed the minimum standards for waste hazardous by characteristics established in RCRA regulations, 40 CFR 261.21-261.24, or listed hazardous waste as defined by 40 CFR, part 261, subpart D, as amended. The following documentation demonstrating the waste as non-hazardous is attached. (Check the appropriate items as provided)

☐ MSDS Information☐ RCRA Hazardous Waste Analysis☐ Other (Provide Description Below)

(PRINT) AUTHORIZED AGENTS SIGNATURE

DATE

SIGNATURE

## TRANSPORTER

Transporter's Name Brand XDriver's Name Christopher MunozAddress 970-366-2649 - Daniel

Phone No. \_\_\_\_\_

Truck No. 138

Phone No. \_\_\_\_\_

WHP No. \_\_\_\_\_

I hereby certify that the above named material(s) was/were picked up at the Generator's site listed above and delivered without incident to the disposal facility listed below.

SHIPMENT DATE

DRIVER'S SIGNATURE

DELIVERY DATE

DRIVER'S SIGNATURE

## TRUCK TIME STAMP

## DISPOSAL FACILITY

## RECEIVING AREA

IN: 5:25 pm OUT: \_\_\_\_\_Name/No. TA

Site Name/

Red Bluff Facility / STF-055

Phone No.

432-448-4239

Permit No.

5053 US Hwy 285, Orla, TX 79770

Address

NORM READINGS TAKEN? (Circle One) YES NOIf YES, was reading 50 micro roentgens? (Circle One) YES NO

NORM (mR/hr) \_\_\_\_\_

## TANK BOTTOMS

	Feet	Inches
1st Gauge	_____	_____
2nd Gauge	_____	_____
Received	_____	_____

BS&W Received	_____	BS&W (%)	_____
Free Water	_____		
Total Received	_____		

I hereby certify that the above load material has been (circle one)

ACCEPTED

DENIED

If denied, why?

NAME (PRINT)

DATE

TITLE

SIGNATURE



## TEXAS NON-HAZARDOUS OILFIELD WASTE MANIFEST

(PLEASE PRINT)

\*REQUIRED INFORMATION\*

Company Main Contact Information

Name Preston KizerPhone No. CAI-URWT**GENERATOR**

NO. 336409

Operator No. \_\_\_\_\_  
 Operators Name Chavon  
 Address \_\_\_\_\_  
 City, State, Zip \_\_\_\_\_  
 Phone No. \_\_\_\_\_

Permit/RRC No. \_\_\_\_\_  
 Lease/Well Name & No. Cicada 13 #144  
 County 30-015-44345  
 API No. \_\_\_\_\_  
 Rig Name & No. CC-UCRE 13400  
 AFE/PO No. \_\_\_\_\_

**EXEMPT E&P Waste/Service Identification and Amount (place volume next to waste type in barrels or cubic yards)**

Oil Based Muds	_____	<b>NON-INJECTABLE WATERS</b>	Washout Water (Non-Injectable)	_____	<b>OTHER EXEMPT WASTES (type and generation process of the waste)</b> <u>4-50001</u>
Oil Based Cuttings	_____		Completion Fluid/Flow Back (Non-Injectable)	_____	
Water Based Muds	_____		Produced Water (Non-Injectable)	_____	
Water Based Cuttings	_____		Gathering Line Water/Waste (Non-Injectable)	_____	
Produced Formation Solids	_____		<b>INTERNAL USE ONLY</b>		
Tank Bottoms	_____	Truck Washout (exempt waste)	_____		
E&P Contaminated Soil	_____				
Gas Plant Waste	_____				

WASTE GENERATION PROCESS: ☐ DRILLING ☐ COMPLETION ☐ PRODUCTION ☐ GATHERING LINES

**NON-EXEMPT E&P Waste/Service Identification and Amount**

All non-exempt E&amp;P waste must be analysed and be below threshold limits for toxicity (TCLP), ignitability, corrosivity and reactivity.

Non-Exempt Other \_\_\_\_\_ \*please select from Non-Exempt Waste List on back

QUANTITY 10.5 B-BARRELS Y-YARDS E-EACH

I hereby certify that the above listed material(s) is (are) not hazardous waste as defined by 40 CFR Part 261 or any applicable state law. That each waste has been properly described, classified and packaged, and is in proper condition for transportation according to applicable regulation.

☒ RCRA EXEMPT:

Oil field wastes generated from oil and gas exploration and production operation and are not mixed with non-exempt waste (R360 Accepts certifications on a per load basis only)

☐ RCRA NON-EXEMPT:

Oil field waste which is non-hazardous that does not exceed the minimum standards for waste hazardous by characteristics established in RCRA regulations, 40 CFR 261.21-261.24, or listed hazardous waste as defined by 40 CFR, part 261, subpart D, as amended. The following documentation demonstrating the waste as non-hazardous is attached. (Check the appropriate items as provided)

☐ MSDS Information☐ RCRA Hazardous Waste Analysis☐ Other (Provide Description Below)

(PRINT) AUTHORIZED AGENTS SIGNATURE

DATE

SIGNATURE

Transporter's Name Brown & S  
 Address \_\_\_\_\_  
 Phone No. 970 366 2649

**TRANSPORTER**

Driver's Name Chris Musser  
 Phone No. 138  
 Truck No. 6749  
 WHP No. \_\_\_\_\_

I hereby certify that the above named material(s) was/were picked up at the Generator's site listed above and delivered without incident to the disposal facility listed below.

SHIPMENT DATE

DRIVER'S SIGNATURE

DELIVERY DATE

DRIVER'S SIGNATURE

**TRUCK TIME STAMP****DISPOSAL FACILITY****RECEIVING AREA**IN: 6:50 PM OUT: \_\_\_\_\_Name/No. 12

Site Name/Permit No. Red Bluff Facility / STF-065  
 Address 5053 US Hwy 285, Orla, TX 79770

Phone No. 432-448-4239

NORM READINGS TAKEN? (Circle One) YES NOIf YES, was reading > 50 micro roentgens? (Circle One) YES NO

NORM (mR/hr) \_\_\_\_\_

**TANK BOTTOMS**

1st Gauge \_\_\_\_\_  
 2nd Gauge \_\_\_\_\_  
 Received \_\_\_\_\_

BS&W Received	_____	BS&W (%)	_____
Free Water	_____		
Total Received	_____		

I hereby certify that the above load material has been (circle one)

ACCEPTED

DENIED

If denied, why?

Jorge Garcia 3/27/24 TR JM  
 NAME (PRINT) DATE TITLE SIGNATURE



## TEXAS NON-HAZARDOUS OILFIELD WASTE MANIFEST

(PLEASE PRINT)

\*REQUIRED INFORMATION\*

Company Man Contact Information

Name Preston KizerPhone No. CAI - URWT**GENERATOR**NO. 336577

Operator No. \_\_\_\_\_  
 Operators Name CHEVRON  
 Address \_\_\_\_\_  
 City, State, Zip \_\_\_\_\_  
 Phone No. \_\_\_\_\_

Permit/RRC No. CICAPA 13# 284  
 Lease/Well Name & No. \_\_\_\_\_  
 County 30-DT5-44345  
 API No. \_\_\_\_\_  
 Rig Name & No. CC - UCRE 13400  
 AFL/PO No. \_\_\_\_\_

**EXEMPT E&P Waste/Service Identification and Amount (place volume next to waste type in barrels or cubic yards)**

Oil Based Muds	_____	<b>NON-INJECTABLE WATERS</b>	Washout Water (Non-Injectable)	_____	<b>OTHER EXEMPT WASTES (type and generation process of the waste)</b>
Oil Based Cuttings	_____		Completion Fluid/Flow Back (Non-Injectable)	_____	
Water Based Muds	_____		Produced Water (Non-Injectable)	_____	
Water Based Cuttings	_____		Gathering Line Water/Waste (Non-Injectable)	_____	
Produced Formation Solids	_____			_____	
Tank Bottoms	_____	<b>INTERNAL USE ONLY</b>	Truck Washout (exempt waste)	_____	
E&P Contaminated Soil	_____				
Gas Plant Waste	_____				

WASTE GENERATION PROCESS: ☐ DRILLING ☐ COMPLETION ☒ PRODUCTION ☐ GATHERING LINES

**NON-EXEMPT E&P Waste/Service Identification and Amount**

All non-exempt E&amp;P waste must be analysed and be below threshold limits for toxicity (TCLP), Ignitability, Corrosivity and Reactivity.

Non-Exempt Other \_\_\_\_\_ \*please select from Non-Exempt Waste List on back

QUANTITY 8-BARRELS 125 Y-YARDS E-FACH

I hereby certify that the above listed material(s) is (are) not hazardous waste as defined by 40 CFR Part 261 or any applicable state law. That each waste has been properly described, classified and packaged, and is in proper condition for transportation according to applicable regulation.

☒ RCRA EXEMPT

Oil field wastes generated from oil and gas exploration and production operation and are not mixed with non-exempt waste (R360 Accepts certifications on a per load basis only)

☐ RCRA NON-EXEMPT:

Oil field waste which is non-hazardous that does not exceed the minimum standards for waste hazardous by characteristics established in RCRA regulations, 40 CFR 261.21-261.24, or listed hazardous waste as defined by 40 CFR part 261, subpart D, as amended. The following documentation demonstrating the waste as non-hazardous is attached. (Check the appropriate items as provided)

☐ MSDS Information☐ RCRA Hazardous Waste Analysis☐ Other (Provide Description Below)

(PRINT) AUTHORIZED AGENTS SIGNATURE

DATE

SIGNATURE

**TRANSPORTER**

Transporter's Name BRAND - X  
 Address 004554 T X  
 Phone No. 920-366-2649

Driver's Name HENRIETTA RODRIGUEZ  
 Phone No. 196-2188196  
 Truck No. 119  
 WHIP No. \_\_\_\_\_

I hereby certify that the above named material(s) was/were picked up at the Generator's site listed above and delivered without incident to the disposal facility listed below.

SHIPMENT DATE

DRIVER'S SIGNATURE

DELIVERY DATE

DRIVER'S SIGNATURE

**TRUCK TIME STAMP****DISPOSAL FACILITY****RECEIVING AREA**IN: 11:54 AM OUT: \_\_\_\_\_Name/No. 12

Site Name/ Permit No. Red Bluff Facility / STF-065  
 Address 5053 US Hwy 285, Orla, TX 79770

Phone No. 432-448-4239NORM READINGS TAKEN? (Circle One) YES NO

If YES, was reading &gt; 50 micro roentgens? (Circle One) YES NO

NORM (mR/hr) \_\_\_\_\_

**TANK BOTTOMS**

1st Gauge \_\_\_\_\_  
 2nd Gauge \_\_\_\_\_  
 Received \_\_\_\_\_

BS&W Received	_____	BS&W (%)	_____
Free Water	_____		
Total Received	_____		

I hereby certify that the above load material has been (circle one)

ACCEPTED

DENIED

If denied, why?

DATE

TITLE

SIGNATURE





## TEXAS NON-HAZARDOUS OILFIELD WASTE MANIFEST

(PLEASE PRINT)

\*REQUIRED INFORMATION\*

Company Main Contact Information

Name Proton KizerPhone No. 409-URWT

<b>GENERATOR</b>		NO. <u>336576</u>
Operator No. <u>Chevron</u>	Permit/RRC No. _____	
Operators Name _____	Lease/Well Name & No. <u>Cicada 13 #224</u>	
Address _____	County _____	
City, State, Zip _____	API No. <u>30-015-94345</u>	
Phone No. _____	Rig Name & No. <u>CC-UCRE-13400</u>	
	AFE/PO No. _____	

EXEMPT E&P Waste/Service Identification and Amount (place volume next to waste type in barrels or cubic yards)		
Oil Based Muds _____	<b>NON-INJECTABLE WATERS</b> Washout Water (Non-Injectable) _____ Completion Fluid/Flow Back (Non-Injectable) _____ Produced Water (Non-Injectable) _____ Gathering Line Water/Waste (Non-Injectable) _____ <b>INTERNAL USE ONLY</b> Truck Washout (exempt waste) _____	<b>OTHER EXEMPT WASTES</b> (type and generation process of the waste) _____
Oil Based Cuttings _____		
Water Based Muds _____		
Water Based Cuttings _____		
Produced Formation Solids _____		
Tank Bottoms _____		
E&P Contaminated Soil _____		
Gas Plant Waste _____		
WASTE GENERATION PROCESS: <input type="checkbox"/> DRILLING <input type="checkbox"/> COMPLETION <input checked="" type="checkbox"/> PRODUCTION <input type="checkbox"/> GATHERING LINES		

NON-EXEMPT E&P Waste/Service Identification and Amount	
All non-exempt E&P waste must be analysed and be below threshold limits for toxicity (TCLP), Ignitability, Corrosivity and Reactivity.	
Non-Exempt Other _____	*please select from Non-Exempt Waste List on back

QUANTITY	B BARRELS	<u>12.5</u> Y-YARDS	E-EACH
----------	-----------	---------------------	--------

I hereby certify that the above listed material(s) is (are) not hazardous waste as defined by 40 CFR Part 261 or any applicable state law. That each waste has been properly described, classified and packaged and is in proper condition for transportation according to applicable regulation.

- ☒ RCRA EXEMPT: Oil field wastes generated from oil and gas exploration and production operation and are not mixed with non-exempt waste (R360 Accepts certifications on a per load basis only)
- ☐ RCRA NON-EXEMPT: Oil field waste which is non-hazardous that does not exceed the minimum standards for waste hazardous by characteristics established in RCRA regulations, 40 CFR 261.21-261.24, or listed hazardous waste as defined by 40 CFR, part 261, subpart D, as amended. The following documentation demonstrating the waste as non-hazardous is attached. (Check the appropriate items as provided)
- ☐ MSDS Information ☐ RCRA Hazardous Waste Analysis ☐ Other (Provide Description Below) \_\_\_\_\_

(PRINT) AUTHORIZED AGENTS SIGNATURE \_\_\_\_\_ DATE \_\_\_\_\_ SIGNATURE \_\_\_\_\_

<b>TRANSPORTER</b>	
Transporter's Name <u>Brandx</u>	Driver's Name <u>Chris Munoz</u>
Address _____	Phone No. _____
Phone No. <u>(970) 366-2649</u>	Truck No. <u>198</u>
	WHP No. <u>6749</u>

I hereby certify that the above named material(s) was/were picked up at the Generator's site listed above and delivered without incident to the disposal facility listed below:

SHIPMENT DATE _____	DRIVER'S SIGNATURE _____	DELIVERY DATE <u>5-28-24</u>	DRIVER'S SIGNATURE _____
---------------------	--------------------------	------------------------------	--------------------------

<b>TRUCK TIME STAMP</b> IN: <u>11:44 AM</u> OUT: _____	<b>DISPOSAL FACILITY</b> Name/No. <u>12</u>
---	--

Site Name/Permit No. <u>Red Bluff Facility / STF-065</u>	Phone No. <u>432-448-4239</u>
Address <u>5053 US Hwy 285, Orla, TX 79770</u>	

NORM READINGS TAKEN? (Circle One) ☒ YES ☐ NO

If YES, was reading > 50 micro roentgens? (Circle One) YES ☐ NO ☒

NORM (mR/hr) \_\_\_\_\_

TANK BOTTOMS			
1st Gauge	Feet	inches	
2nd Gauge			
Received			
BS&W Received		BS&W (%)	
Free Water			
Total Received			

I hereby certify that the above load material has been (circle one)

ACCEPTED

DENIED

If denied, why?

NAME (PRINT)

DATE

TITLE

SIGNATURE

## TEXAS NON-HAZARDOUS OILFIELD WASTE MANIFEST

Company Man Contact Information

Name Wesley KizerPhone No. CAI-URWT

(PLEASE PRINT)

\*REQUIRED INFORMATION\*

## GENERATOR

NO. 336579

Operator No. \_\_\_\_\_  
 Operators Name Chevron.  
 Address \_\_\_\_\_  
 City, State, Zip \_\_\_\_\_  
 Phone No. \_\_\_\_\_

Permit/RRC No. \_\_\_\_\_  
 Lease/Well Name & No. Cicada 13 # 10 H  
 County \_\_\_\_\_  
 API No. 30-015-44345  
 Rig Name & No. \_\_\_\_\_  
 AFE/PO No. CC-0023-15400

## EXEMPT E&amp;P Waste/Service Identification and Amount (place volume next to waste type in barrels or cubic yards)

Oil Based Muds _____	NON-INJECTABLE WATERS Washout Water (Non-Injectable) _____ Completion Fluid/Flow Back (Non-Injectable) _____ Produced Water (Non-Injectable) _____ Gathering Line Water/Waste (Non-Injectable) _____ INTERNAL USE ONLY Truck Washout (exempt waste) _____	OTHER EXEMPT WASTES (type and generation process of the waste) _____
Oil Based Cuttings _____		
Water Based Muds _____		
Water Based Cuttings _____		
Produced Formation Solids _____		
Tank Bottoms _____		
E&P Contaminated Soil _____		
Gas Plant Waste _____		

WASTE GENERATION PROCESS: ☐ DRILLING ☐ COMPLETION ☒ PRODUCTION ☐ GATHERING LINES

## NON-EXEMPT E&amp;P Waste/Service Identification and Amount

All non-exempt E&amp;P waste must be analysed and be below threshold limits for toxicity (TCLP), Ignitability, Corrosivity and Reactivity.

Non-Exempt Other \_\_\_\_\_ \*please select from Non-Exempt Waste List on back

QUANTITY \_\_\_\_\_ B-BARRELS 10.5 Y-YARDS \_\_\_\_\_ E-EACH \_\_\_\_\_

I hereby certify that the above listed material(s), is (are) not hazardous waste as defined by 40 CFR Part 261 or any applicable state law. That each waste has been properly described, classified and packaged, and is in proper condition for transportation according to applicable regulation.

☒ RCRA EXEMPT: Oil field wastes generated from oil and gas exploration and production operation and are not mixed with non-exempt waste (R360 Accepts certifications on a per load basis only)

☐ RCRA NON-EXEMPT: Oil field waste which is non-hazardous that does not exceed the minimum standards for waste hazardous by characteristics established in RCRA regulations, 40 CFR 261.21-261.24, or listed hazardous waste as defined by 40 CFR, part 261, subpart D, as amended. The following documentation demonstrating the waste as non-hazardous is attached. (Check the appropriate items as provided)

☐ MSDS Information ☐ RCRA Hazardous Waste Analysis ☐ Other: (Provide Description Below)

(PRINT) AUTHORIZED AGENT'S SIGNATURE

DATE

SIGNATURE

Transporter's Name Bram 2x  
 Address \_\_\_\_\_  
 Phone No. 970 366 2647

## TRANSPORTER

Driver's Name Chris Muroz  
 Phone No. \_\_\_\_\_  
 Truck No. 135  
 WHP No. 6795

I hereby certify that the above named material(s) was/were picked up at the Generator's site listed above and delivered without incident to the disposal facility listed below.

SHIPMENT DATE

DRIVER'S SIGNATURE

DELIVERY DATE

DRIVER'S SIGNATURE

TRUCK TIME STAMP  
 IN 4:30PM OUT: \_\_\_\_\_

## DISPOSAL FACILITY

RECEIVING AREA

Name/No. 1-7

Site Name/ Permit No. Red Bluff Facility / STF-065  
 Address 5053 US Hwy 285, Orla, TX 79770

Phone No. 432-448-4239

NORM READINGS TAKEN? (Circle One) YES NO

YES, was reading &gt; 50 micro roentgens? (Circle One) YES NO

NORM (mR/hr) \_\_\_\_\_

## TANK BOTTOMS

1st Gauge \_\_\_\_\_  
 2nd Gauge \_\_\_\_\_  
 Received \_\_\_\_\_

BS&W Received		BS&W (%)	
Free Water			
Total Received			

I hereby certify that the above load material has been (circle one)

ACCEPTED

DENIED

If denied, why?

NAME (PRINT)

DATE

TIME

SIGNATURE





## TEXAS NON-HAZARDOUS OILFIELD WASTE MANIFEST

Company Man Contact Information

(PLEASE PRINT)

\*REQUIRED INFORMATION\*

Name

Phone No.

## GENERATOR

RB 368536

Operator No.

Permit/RRC No.

Operators Name

Lease/Well

Address

Name &amp; No.

County

API No.

Rig Name &amp; No.

AFE/PO No.

City, State, Zip

Phone No.

Oil Based Muds	NON-INJECTABLE WATERS	OTHER EXEMPT WASTES (type and generation process of the waste)
Oil Based Cuttings	Washout Water (Non-Injectable)	Belly Dump
Water Based Muds	Completion Fluid/Flow Back (Non-Injectable)	
Water Based Cuttings	Produced Water (Non-Injectable)	
Produced Formation Solids	Gathering Line Water/Waste (Non-Injectable)	
Tank Bottoms	INTERNAL USE ONLY	
E&P Contaminated Soil	Truck Washout (exempt waste)	
Gas Plant Waste		

WASTE GENERATION PROCESS: ☐ DRILLING ☐ COMPLETION ☐ PRODUCTION ☐ GATHERING LINES

## NON-EXEMPT E&amp;P Waste/Service Identification and Amount

All non-exempt E&amp;P waste must be analysed and be below threshold limits for toxicity (TCLP), Ignitability, Corrosivity and Reactivity.

Non-Exempt Other

\*please select from Non-Exempt Waste List on back

QUANTITY

B-BARRELS

Y-YARDS

E-EACH

I hereby certify that the above listed material(s), is (are) not hazardous waste as defined by 40 CFR Part 261 or any applicable state law. That each waste has been properly described, classified and packaged, and is in proper condition for transportation according to applicable regulation.

☐ RCRA EXEMPT:

Oil field wastes generated from oil and gas exploration and production operation and are not mixed with non-exempt waste (R360 Accepts certifications on a per load basis only)

☐ RCRA NON-EXEMPT:

Oil field waste which is non-hazardous that does not exceed the minimum standards for waste hazardous by characteristics established in RCRA regulations, 40 CFR 261.21-261.24, or listed hazardous waste as defined by 40 CFR, part 261, subpart D, as amended. The following documentation demonstrating the waste as non-hazardous is attached. (Check the appropriate items as provided)

☐ MSDS Information☐ RCRA Hazardous Waste Analysis☐ Other (Provide Description Below)

(PRINT) AUTHORIZED AGENTS NAME

DATE

SIGNATURE

## TRANSPORTER

Transporter's Name

Driver's Name

Address

Phone No.

Phone No.

Truck No.

WHP No.

I hereby certify that the above named material(s) was/were picked up at the Generator's site listed above and delivered without incident to the disposal facility listed below.

SHIPMENT DATE

DRIVER'S SIGNATURE

DELIVERY DATE

DRIVER'S SIGNATURE

## TRUCK TIME STAMP

IN: OUT:

## DISPOSAL FACILITY

## RECEIVING AREA

Name/No.

Site Name/  
Permit No.

Red Bluff Facility / STF-065

Phone No.

432-448-4239

Address

5053 US Hwy 285, Orla, TX 79770

NORM READINGS TAKEN? (Circle One)

YES

NO

If YES, was reading &gt; 50 micro roentgens? (Circle One)

YES

NO

NORM (mR/hr)

## TANK BOTTOMS

Feet

Inches

1st Gauge

BS&amp;W Received

BS&amp;W (%)

I hereby certify that the above load material has been (circle one):

ACCEPTED

DENIED

If denied, why?

NAME (PRINT)

DATE

TITLE

SIGNATURE

Version 1

308.R360-5160





## TEXAS NON-HAZARDOUS OILFIELD WASTE MANIFEST

Company Man Contact Information

Name AUSTIN ADAMS

Phone No. \_\_\_\_\_

(PLEASE PRINT) \*REQUIRED INFORMATION\*

## GENERATOR

RB 368516

Operator No. \_\_\_\_\_

Permit/RRC No. \_\_\_\_\_

Operators Name CHEVRON

Lease/Well \_\_\_\_\_

Address \_\_\_\_\_

Name & No. CITADIA 22 PAV

County \_\_\_\_\_

City, State, Zip \_\_\_\_\_

API No. 30-015-45423

Phone No. \_\_\_\_\_

Rig Name &amp; No. \_\_\_\_\_

AFE/PO No. WBS-2018-0064

Oil Based Muds \_\_\_\_\_

NON-INJECTABLE WATERS

OTHER EXEMPT WASTES (type and generation process of the waste)

Oil Based Cuttings \_\_\_\_\_

Washout Water (Non-Injectable) \_\_\_\_\_

Water Based Muds \_\_\_\_\_

Completion Fluid/Flow Back (Non-Injectable) \_\_\_\_\_

Water Based Cuttings \_\_\_\_\_

Produced Water (Non-Injectable) \_\_\_\_\_

Produced Formation Solids \_\_\_\_\_

Gathering Line Water/Waste (Non-Injectable) \_\_\_\_\_

Tank Bottoms \_\_\_\_\_

INTERNAL USE ONLY

E&P Contaminated Soil ✓

Gas Plant Waste \_\_\_\_\_

Truck Washout (exempt waste) \_\_\_\_\_

WASTE GENERATION PROCESS: ☐ DRILLING ☐ COMPLETION ☐ PRODUCTION ☐ GATHERING LINES

## NON-EXEMPT E&amp;P Waste/Service Identification and Amount

All non-exempt E&amp;P waste must be analysed and be below threshold limits for toxicity (TCLP), Ignitability, Corrosivity and Reactivity.

Non-Exempt Other \_\_\_\_\_

\*please select from Non-Exempt Waste List on back

QUANTITY

B-BARRELS

Y-YARDS

E-EACH

I hereby certify that the above listed material(s), is (are) not hazardous waste as defined by 40 CFR Part 261 or any applicable state law. That each waste has been properly described, classified and packaged, and is in proper condition for transportation according to applicable regulation.

☒ RCRA EXEMPT:

Oil field wastes generated from oil and gas exploration and production operation and are not mixed with non-exempt waste (R360 Accepts certifications on a per load basis only)

☐ RCRA NON-EXEMPT:

Oil field waste which is non-hazardous that does not exceed the minimum standards for waste hazardous by characteristics established in RCRA regulations, 40 CFR 261.21-261.24, or listed hazardous waste as defined by 40 CFR, part 261, subpart D, as amended. The following documentation demonstrating the waste as non-hazardous is attached. (Check the appropriate items as provided)

☐ MSDS Information☐ RCRA Hazardous Waste Analysis☐ Other (Provide Description Below)

(PRINT) AUTHORIZED AGENTS NAME

DATE

SIGNATURE

## TRANSPORTER

Transporter's Name MENARR PARTNERSDriver's Name LEONARD R

Address \_\_\_\_\_

Phone No. \_\_\_\_\_

Phone No. 575-397-0050Truck No. M 90

WHP No. \_\_\_\_\_

I hereby certify that the above named material(s) was/were picked up at the Generator's site listed above and delivered without incident to the disposal facility listed below.

SHIPMENT DATE

DRIVER'S SIGNATURE

DELIVERY DATE

DRIVER'S SIGNATURE

## TRUCK TIME STAMP

## DISPOSAL FACILITY

## RECEIVING AREA

IN: 12:33 OUT: \_\_\_\_\_Name/No. 10Site Name/  
Permit No.Red Bluff Facility / STF-065

Phone No.

432-448-4239

Address

5053 US Hwy 285, Orla, TX 79770

NORM READINGS TAKEN? (Circle One)

YES

NO

If YES, was reading &gt; 50 micro roentgens? (Circle One)

Yes

No

NORM (mR/hr) 7

## TANK BOTTOMS

Feet

Inches

1st Gauge

BS&amp;W Received

BS&amp;W (%)

I hereby certify that the above load material has been (circle one):

ACCEPTED

DENIED

If denied, why?

NAME (PRINT)

DATE

TITLE

SIGNATURE





## TEXAS NON-HAZARDOUS OILFIELD WASTE MANIFEST

Company Man Contact Information

 Name AUSTIN ADAMS  
 Phone No. 346-656-7797

(PLEASE PRINT) \*REQUIRED INFORMATION\*

## GENERATOR

RB 368517

Operator No. \_\_\_\_\_

Permit/RRC No. \_\_\_\_\_

Operators Name CHEVRON

Lease/Well \_\_\_\_\_

Address \_\_\_\_\_

Name & No. CICADIA 22-PAD

County \_\_\_\_\_

City, State, Zip \_\_\_\_\_

API No. 30-015-45423

Phone No. \_\_\_\_\_

Rig Name & No. 0-110221-000101

AFE/PO No. \_\_\_\_\_

Oil Based Muds \_\_\_\_\_

NON-INJECTABLE WATERS

OTHER EXEMPT WASTES (type and generation process of the waste)

Oil Based Cuttings \_\_\_\_\_

Washout Water (Non-Injectable) \_\_\_\_\_

Water Based Muds \_\_\_\_\_

Completion Fluid/Flow Back (Non-Injectable) \_\_\_\_\_

Water Based Cuttings \_\_\_\_\_

Produced Water (Non-Injectable) \_\_\_\_\_

Produced Formation Solids \_\_\_\_\_

Gathering Line Water/Waste (Non-Injectable) \_\_\_\_\_

Tank Bottoms \_\_\_\_\_

INTERNAL USE ONLY

E&P Contaminated Soil ☒

Gas Plant Waste \_\_\_\_\_

Truck Washout (exempt waste) \_\_\_\_\_

WASTE GENERATION PROCESS: ☐ DRILLING ☐ COMPLETION ☐ PRODUCTION ☐ GATHERING LINES

## NON-EXEMPT E&amp;P Waste/Service Identification and Amount

All non-exempt E&amp;P waste must be analysed and be below threshold limits for toxicity (TCLP), Ignitability, Corrosivity and Reactivity.

Non-Exempt Other \_\_\_\_\_

\*please select from Non-Exempt Waste List on back

QUANTITY

B-BARRELS

Y-YARDS

E-EACH

I hereby certify that the above listed material(s), is (are) not hazardous waste as defined by 40 CFR Part 261 or any applicable state law. That each waste has been properly described, classified and packaged, and is in proper condition for transportation according to applicable regulation.

☐ RCRA EXEMPT:

Oil field wastes generated from oil and gas exploration and production operation and are not mixed with non-exempt waste (R360 Accepts certifications on a per load basis only)

☐ RCRA NON-EXEMPT:

Oil field waste which is non-hazardous that does not exceed the minimum standards for waste hazardous by characteristics established in RCRA regulations, 40 CFR 261.21-261.24, or listed hazardous waste as defined by 40 CFR, part 261, subpart D, as amended. The following documentation demonstrating the waste as non-hazardous is attached. (Check the appropriate items as provided)

☐ MSDS Information☐ RCRA Hazardous Waste Analysis☐ Other (Provide Description Below)

(PRINT) AUTHORIZED AGENTS NAME

DATE

SIGNATURE

## TRANSPORTER

Transporter's Name McNADD PARTNERSDriver's Name LUIS R

Address \_\_\_\_\_

Phone No. \_\_\_\_\_

Phone No. 575-397-0050Truck No. M 90

WHP No. \_\_\_\_\_

I hereby certify that the above named material(s) was/were picked up at the Generator's site listed above and delivered without incident to the disposal facility listed below.

SHIPMENT DATE

DRIVER'S SIGNATURE

DELIVERY DATE

DRIVER'S SIGNATURE

TRUCK TIME STAMP

DISPOSAL FACILITY

RECEIVING AREA

IN: 10.414 OUT: \_\_\_\_\_Name/No. YDSite Name/  
Permit No.Red Bluff Facility / STF-065

Phone No.

432-448-4239

Address

5053 US Hwy 285, Orla, TX 79770

NORM READINGS TAKEN? (Circle One)

YES

NO

If YES, was reading &gt; 50 micro roentgens? (Circle One)

Yes

No

NORM (mR/hr) \_\_\_\_\_

## TANK BOTTOMS

Feet

Inches

1st Gauge

BS&amp;W Received

BS&amp;W (%)

I hereby certify that the above load material has been (circle one):

ACCEPTED

DENIED

If denied, why? \_\_\_\_\_

NAME (PRINT)

DATE

TITLE

SIGNATURE





## TEXAS NON-HAZARDOUS OILFIELD WASTE MANIFEST

Company Man Contact Information

(PLEASE PRINT) \*REQUIRED INFORMATION\*

Name AUSTIN ADAMS  
Phone No. \_\_\_\_\_

## GENERATOR

RB 368518

Operator No. \_\_\_\_\_

Permit/RRC No. \_\_\_\_\_

Operators Name CHEVRON

Lease/Well \_\_\_\_\_

Address \_\_\_\_\_

Name & No. CICADA 22 PAD

City, State, Zip \_\_\_\_\_

County \_\_\_\_\_

Phone No. \_\_\_\_\_

API No. 30-015-45423

Rig Name &amp; No. \_\_\_\_\_

AFE/PO No. \_\_\_\_\_

Oil Based Muds	NON-INJECTABLE WATERS	OTHER EXEMPT WASTES (type and generation process of the waste)
Oil Based Cuttings	Washout Water (Non-Injectable)	Drilling - Waste generated while drilling the well
Water Based Muds	Completion Fluid/Flow Back (Non-Injectable)	Initial Completion - Waste generated on the well
Water Based Cuttings	Produced Water (Non-Injectable)	Belly Dump
Produced Formation Solids	Gathering Line Water/Waste (Non-Injectable)	Commercial Facilities - Waste that is generated in a tank
Tank Bottoms	INTERNAL USE ONLY	In Tank - Waste which is spilled while in transit
E&P Contaminated Soil	Truck Washout (exempt waste)	
Gas Plant Waste		

WASTE GENERATION PROCESS: ☐ DRILLING ☐ COMPLETION ☐ PRODUCTION ☐ GATHERING LINES

## NON-EXEMPT E&amp;P Waste/Service Identification and Amount

All non-exempt E&amp;P waste must be analysed and be below threshold limits for toxicity (TCLP), Ignitability, Corrosivity and Reactivity.

Non-Exempt Other \_\_\_\_\_

\*please select from Non-Exempt Waste List on back

QUANTITY

B-BARRELS

Y-YARDS

E-EACH

I hereby certify that the above listed material(s), is (are) not hazardous waste as defined by 40 CFR Part 261 or any applicable state law. That each waste has been properly described, classified and packaged, and is in proper condition for transportation according to applicable regulation.

☒ RCRA EXEMPT:

Oil field wastes generated from oil and gas exploration and production operation and are not mixed with non-exempt waste (R360 Accepts certifications on a per load basis only)

☐ RCRA NON-EXEMPT:

Oil field waste which is non-hazardous that does not exceed the minimum standards for waste hazardous by characteristics established in RCRA regulations, 40 CFR 261.21-261.24, or listed hazardous waste as defined by 40 CFR, part 261, subpart D, as amended. The following documentation demonstrating the waste as non-hazardous is attached. (Check the appropriate items as provided)

☐

MSDS Information

☐

RCRA Hazardous Waste Analysis

☐

Other (Provide Description Below)

(PRINT) AUTHORIZED AGENTS NAME

DATE

SIGNATURE

## TRANSPORTER

Transporter's Name McNAB PARTNERSDriver's Name LUMER

Address \_\_\_\_\_

Phone No. \_\_\_\_\_

Phone No. 575-397-0050Truck No. M 90

WHP No. \_\_\_\_\_

I hereby certify that the above named material(s) was/were picked up at the Generator's site listed above and delivered without incident to the disposal facility listed below.

SHIPMENT DATE

DRIVER'S SIGNATURE

DELIVERY DATE

DRIVER'S SIGNATURE

## TRUCK TIME STAMP

## DISPOSAL FACILITY

## RECEIVING AREA

IN: 7:19 OUT: \_\_\_\_\_Name/No. 127Site Name/  
Permit No.Red Bluff Facility / STF-065

Phone No.

432-448-4239

Address

5053 US Hwy 285, Orla, TX 79770

NORM READINGS TAKEN? (Circle One)

YES

NO

If YES, was reading &gt; 50 micro roentgens? (Circle One)

Yes

No

NORM (mR/hr)

## TANK BOTTOMS

Feet

Inches

1st Gauge

BS&amp;W Received

BS&amp;W (%)

I hereby certify that the above load material has been (circle one):

ACCEPTED

DENIED

If denied, why?

NAME (PRINT)

DATE

TITLE

SIGNATURE





(PLEASE PRINT)

\*REQUIRED INFORMATION\*

Name

Phone No.

## GENERATOR

NO. HW-725957

Generator Manifest #

Generator Name

Address

City, State, Zip

Phone No.

Location of Origin

Lease/Well

Name &amp; No.

County

API No.

Rig Name &amp; No.

AFE/PO No.

## EXEMPT E&amp;P Waste/Service Identification and Amount (place volume next to waste type in barrels or cubic yards)

Oil Based Muds		NON-INJECTABLE WATERS		OTHER EXEMPT E&P WASTE STREAMS
Oil Based Cuttings		Washout Water (Non-Injectable)		
Water Based Muds		Completion Fluid/Flow Back (Non-Injectable)		
Water Based Cuttings		Produced Water (Non-Injectable)		
Produced Formation Solids		Gathering Line Water/Waste (Non-Injectable)		
Tank Bottoms		INTERNAL USE ONLY		TOP SOIL & CALICHE SALES
E&P Contaminated Soil		Truck Washout (exempt waste)	YES NO	QUANTITY TOP SOIL CALICHE
Gas Plant Waste				

WASTE GENERATION PROCESS: ☐ DRILLING ☐ COMPLETION ☐ PRODUCTION ☐ GATHERING LINES

## NON-EXEMPT E&amp;P Waste/Service Identification and Amount

All non-exempt E&amp;P waste must be analysed and be below threshold limits for toxicity (TCLP), Ignitability, Corrosivity and Reactivity.

Non-Exempt Other ☐ \*please select from Non-Exempt Waste List on back

DISPOSAL QUANTITY B - BARRELS L - LIQUID 18 Y - YARDS E - EACH

I hereby certify that the above listed material(s), is (are) not hazardous waste as defined by 40 CFR Part 261 or any applicable state law. That each waste has been properly described, classified and packaged, and is in proper condition for transportation according to applicable regulation.

☐ RCRA EXEMPT: Oil field wastes generated from oil and gas exploration and production operation and are not mixed with non-exempt waste (R360 Accepts certifications on a per load basis only)☐ RCRA NON-EXEMPT: Oil field waste which is non-hazardous that does not exceed the minimum standards for waste hazardous by characteristics established in RCRA regulations, 40 CFR 261.21-261.24, or listed hazardous waste as defined by 40 CFR, part 261, subpart D, as amended. The following documentation demonstrating the waste as non-hazardous is attached. (Check the appropriate items as provided)☐ MSDS Information ☐ RCRA Hazardous Waste Analysis ☐ Other (Provide Description Below)☐ EMERGENCY NON-OILFIELD Emergency non-hazardous, non-oilfield waste that has been ordered by the Department of Public Safety (the order, documentation of non-hazardous waste determination and a description of the waste must accompany this form)

(PRINT) AUTHORIZED AGENTS SIGNATURE

DATE

SIGNATURE

## TRANSPORTER

Transporter's Name

Address

Phone No.

Transporter Ticket #

Driver's Name

Print Name

Phone No.

Truck No.

I hereby certify that the above named material(s) was/were picked up at the Generator's site listed above and delivered without incident to the disposal facility listed below.

SHIPMENT DATE

DRIVER'S SIGNATURE

DELIVERY DATE

DRIVER'S SIGNATURE

## TRUCK TIME STAMP

IN: OUT:

## DISPOSAL FACILITY

## RECEIVING AREA

Name/No.

Site Name/

Permit No.

Address

Halfway Facility / NM1-006

6601 Hobbs Hwy US 62 / 180 Mile Marker 66 Carlsbad, NM 88220

Phone No.

575-392-6368

NORM READINGS TAKEN? (Circle One) YES NO

If YES, was reading &gt; 50 micro roentgens? (Circle One) YES NO

PASS THE PAINT FILTER TEST? (Circle One) YES NO

## TANK BOTTOMS

Feet

Inches

1st Gauge	
2nd Gauge	
Received	

BS&W/BLS Received		BS&W (%)	
Free Water			
Total Received			

I hereby certify that the above load material has been (circle one):

ACCEPTED

DENIED

If denied, why?

NAME (PRINT)

DATE

TITLE

SIGNATURE









(PLEASE PRINT)

\*REQUIRED INFORMATION\*

Name

Phone No.

## GENERATOR

NO. **HW-726043**

Generator Manifest # \_\_\_\_\_

Location of Origin \_\_\_\_\_

Generator Name \_\_\_\_\_

Lease/Well \_\_\_\_\_

Address \_\_\_\_\_

Name &amp; No. \_\_\_\_\_

City, State, Zip \_\_\_\_\_

County \_\_\_\_\_

Phone No. \_\_\_\_\_

API No. \_\_\_\_\_

Rig Name &amp; No. \_\_\_\_\_

AFE/PO No. \_\_\_\_\_

## EXEMPT E&amp;P Waste/Service Identification and Amount (place volume next to waste type in barrels or cubic yards)

Oil Based Muds	_____	NON-INJECTABLE WATERS	_____	OTHER EXEMPT E&P WASTE STREAMS	_____
Oil Based Cuttings	_____	Washout Water (Non-Injectable)	_____		
Water Based Muds	_____	Completion Fluid/Flow Back (Non-Injectable)	_____		
Water Based Cuttings	_____	Produced Water (Non-Injectable)	_____		
Produced Formation Solids	_____	Gathering Line Water/Waste (Non-Injectable)	_____		
Tank Bottoms	_____	INTERNAL USE ONLY	_____	TOP SOIL & CALICHE SALES	_____
E&P Contaminated Soil	_____	Truck Washout (exempt waste)	YES _____ NO _____	QUANTITY	_____
Gas Plant Waste	_____			TOP SOIL	CALICHE

WASTE GENERATION PROCESS: ☐ DRILLING ☐ COMPLETION ☐ PRODUCTION ☐ GATHERING LINES

## NON-EXEMPT E&amp;P Waste/Service Identification and Amount

All non-exempt E&amp;P waste must be analysed and be below threshold limits for toxicity (TCLP), Ignitability, Corrosivity and Reactivity.

Non-Exempt Other \_\_\_\_\_ \*please select from Non-Exempt Waste List on back

DISPOSAL QUANTITY B - BARRELS L - LIQUID Y - YARDS 1.2 E - EACH

I hereby certify that the above listed material(s), is (are) not hazardous waste as defined by 40 CFR Part 261 or any applicable state law. That each waste has been properly described, classified and packaged, and is in proper condition for transportation according to applicable regulation.

☐ RCRA EXEMPT:

Oil field wastes generated from oil and gas exploration and production operation and are not mixed with non-exempt waste (R360 Accepts certifications on a per load basis only)

☐ RCRA NON-EXEMPT:

Oil field waste which is non-hazardous that does not exceed the minimum standards for waste hazardous by characteristics established in RCRA regulations, 40 CFR 261.21-261.24, or listed hazardous waste as defined by 40 CFR, part 261, subpart D, as amended. The following documentation demonstrating the waste as non-hazardous is attached. (Check the appropriate items as provided)

☐ MSDS Information☐ RCRA Hazardous Waste Analysis☐ Other (Provide Description Below)☐ EMERGENCY NON-OILFIELD

Emergency non-hazardous, non-oilfield waste that has been ordered by the Department of Public Safety (the order, documentation of non-hazardous waste determination and a description of the waste must accompany this form)

(PRINT) AUTHORIZED AGENTS SIGNATURE

DATE

SIGNATURE

## TRANSPORTER

Transporter's

Name \_\_\_\_\_

Driver's Name \_\_\_\_\_

Address \_\_\_\_\_

Print Name \_\_\_\_\_

Phone No. \_\_\_\_\_

Phone No. \_\_\_\_\_

Transporter Ticket # \_\_\_\_\_

Truck No. \_\_\_\_\_

I hereby certify that the above named material(s) was/were picked up at the Generator's site listed above and delivered without incident to the disposal facility listed below.

SHIPMENT DATE

DRIVER'S SIGNATURE

DELIVERY DATE

DRIVER'S SIGNATURE

## TRUCK TIME STAMP

IN: \_\_\_\_\_ OUT: \_\_\_\_\_

## DISPOSAL FACILITY

## RECEIVING AREA

Name/No. \_\_\_\_\_

Site Name/

Halfway Facility / NM1-006

Permit No.

Phone No.

575-392-6368

Address 6601 Hobbs Hwy US 62 / 180 Mile Marker 66 Carlsbad, NM 88220

NORM READINGS TAKEN? (Circle One)

YES

NO

If YES, was reading &gt; 50 micro roentgens? (Circle One)

YES

NO

PASS THE PAINT FILTER TEST? (Circle One)

YES

NO

## TANK BOTTOMS

Feet

Inches

1st Gauge

2nd Gauge

Received

BS&amp;W/BBLs Received

Free Water

Total Received

BS&amp;W (%)

I hereby certify that the above load material has been (circle one):

ACCEPTED

DENIED

If denied, why?

NAME (PRINT)

DATE

TITLE

SIGNATURE

## **APPENDIX E**

### **Laboratory Analytical Data**





PHONE (575) 393-2326 ° 101 E. MARLAND ° HOBBS, NM 88240

January 22, 2025

SAM ABBOTT

TETRA TECH

901 WEST WALL STREET , STE 100

MIDLAND, TX 79701

RE: CICADA UNIT 022H FLOWLINE RELEASE

Enclosed are the results of analyses for samples received by the laboratory on 01/21/25 16:53.

Cardinal Laboratories is accredited through Texas NELAP under certificate number TX-C24-00112. Accreditation applies to drinking water, non-potable water and solid and chemical materials. All accredited analytes are denoted by an asterisk (\*). For a complete list of accredited analytes and matrices visit the TCEQ website at [www.tceq.texas.gov/field/qa/lab\\_accred\\_certif.html](http://www.tceq.texas.gov/field/qa/lab_accred_certif.html).

Cardinal Laboratories is accredited through the State of Colorado Department of Public Health and Environment for:

Method EPA 552.2	Haloacetic Acids (HAA-5)
Method EPA 524.2	Total Trihalomethanes (TTHM)
Method EPA 524.4	Regulated VOCs (V1, V2, V3)

Accreditation applies to public drinking water matrices.

This report meets NELAP requirements and is made up of a cover page, analytical results, and a copy of the original chain-of-custody. If you have any questions concerning this report, please feel free to contact me.

Sincerely,

A handwritten signature in black ink that reads "Celey D. Keene". The signature is written in a cursive style with a large, stylized 'C' and 'K'.

Celey D. Keene

Lab Director/Quality Manager



PHONE (575) 393-2326 ° 101 E. MARLAND ° HOBBS, NM 88240

**Analytical Results For:**

TETRA TECH  
 SAM ABBOTT  
 901 WEST WALL STREET , STE 100  
 MIDLAND TX, 79701  
 Fax To: (432) 682-3946

Received:	01/21/2025	Sampling Date:	01/21/2025
Reported:	01/22/2025	Sampling Type:	Soil
Project Name:	CICADA UNIT 022H FLOWLINE RELEASE	Sampling Condition:	Cool & Intact
Project Number:	NONE GIVEN	Sample Received By:	Shalyn Rodriguez
Project Location:	EDDY CO., NM		

**Sample ID: FS - 1 (H250367-01)**

BTX 8021B			mg/kg		Analyzed By: JH				
Analyte	Result	Reporting Limit	Analyzed	Method Blank	BS	% Recovery	True Value QC	RPD	Qualifier
Benzene*	<0.050	0.050	01/21/2025	ND	2.13	107	2.00	0.0838	
Toluene*	<0.050	0.050	01/21/2025	ND	2.11	106	2.00	2.60	
Ethylbenzene*	<0.050	0.050	01/21/2025	ND	2.16	108	2.00	3.61	
Total Xylenes*	<0.150	0.150	01/21/2025	ND	6.53	109	6.00	3.68	
Total BTX	<0.300	0.300	01/21/2025	ND					

Surrogate: 4-Bromofluorobenzene (PID) 122 % 71.5-134

Chloride, SM4500Cl-B			mg/kg		Analyzed By: HM				
Analyte	Result	Reporting Limit	Analyzed	Method Blank	BS	% Recovery	True Value QC	RPD	Qualifier
Chloride	240	16.0	01/22/2025	ND	432	108	400	0.00	

TPH 8015M			mg/kg		Analyzed By: MS				
Analyte	Result	Reporting Limit	Analyzed	Method Blank	BS	% Recovery	True Value QC	RPD	Qualifier
GRO C6-C10*	<10.0	10.0	01/22/2025	ND	204	102	200	1.96	
DRO >C10-C28*	<10.0	10.0	01/22/2025	ND	211	106	200	4.38	
EXT DRO >C28-C36	<10.0	10.0	01/22/2025	ND					

Surrogate: 1-Chlorooctane 104 % 48.2-134

Surrogate: 1-Chlorooctadecane 108 % 49.1-148

Cardinal Laboratories

\*=Accredited Analyte

PLEASE NOTE: Liability and Damages. Cardinal's liability and client's exclusive remedy for any claim arising, whether based in contract or tort, shall be limited to the amount paid by client for analyses. All claims, including those for negligence and any other cause whatsoever shall be deemed waived unless made in writing and received by Cardinal within thirty (30) days after completion of the applicable service. In no event shall Cardinal be liable for incidental or consequential damages, including, without limitation, business interruptions, loss of use, or loss of profits incurred by client, its subsidiaries, affiliates or successors arising out of or related to the performance of the services hereunder by Cardinal, regardless of whether such claim is based upon any of the above stated reasons or otherwise. Results relate only to the samples identified above. This report shall not be reproduced except in full with written approval of Cardinal Laboratories.

Celey D. Keene, Lab Director/Quality Manager



PHONE (575) 393-2326 ° 101 E. MARLAND ° HOBBS, NM 88240

**Analytical Results For:**

TETRA TECH  
 SAM ABBOTT  
 901 WEST WALL STREET , STE 100  
 MIDLAND TX, 79701  
 Fax To: (432) 682-3946

Received:	01/21/2025	Sampling Date:	01/21/2025
Reported:	01/22/2025	Sampling Type:	Soil
Project Name:	CICADA UNIT 022H FLOWLINE RELEASE	Sampling Condition:	Cool & Intact
Project Number:	NONE GIVEN	Sample Received By:	Shalyn Rodriguez
Project Location:	EDDY CO., NM		

**Sample ID: FS - 2 (H250367-02)**

BTEX 8021B		mg/kg		Analyzed By: JH						
Analyte	Result	Reporting Limit	Analyzed	Method Blank	BS	% Recovery	True Value QC	RPD	Qualifier	
Benzene*	<0.050	0.050	01/21/2025	ND	2.13	107	2.00	0.0838		
Toluene*	<0.050	0.050	01/21/2025	ND	2.11	106	2.00	2.60		
Ethylbenzene*	<0.050	0.050	01/21/2025	ND	2.16	108	2.00	3.61		
Total Xylenes*	<0.150	0.150	01/21/2025	ND	6.53	109	6.00	3.68		
Total BTEX	<0.300	0.300	01/21/2025	ND						

Surrogate: 4-Bromofluorobenzene (PID) 113 % 71.5-134

Chloride, SM4500CI-B		mg/kg		Analyzed By: HM						
Analyte	Result	Reporting Limit	Analyzed	Method Blank	BS	% Recovery	True Value QC	RPD	Qualifier	
Chloride	272	16.0	01/22/2025	ND	432	108	400	0.00		

TPH 8015M		mg/kg		Analyzed By: MS					
Analyte	Result	Reporting Limit	Analyzed	Method Blank	BS	% Recovery	True Value QC	RPD	Qualifier
GRO C6-C10*	<10.0	10.0	01/22/2025	ND	204	102	200	1.96	
DRO >C10-C28*	<10.0	10.0	01/22/2025	ND	211	106	200	4.38	
EXT DRO >C28-C36	<10.0	10.0	01/22/2025	ND					

Surrogate: 1-Chlorooctane 102 % 48.2-134

Surrogate: 1-Chlorooctadecane 106 % 49.1-148

Cardinal Laboratories

\*=Accredited Analyte

PLEASE NOTE: Liability and Damages. Cardinal's liability and client's exclusive remedy for any claim arising, whether based in contract or tort, shall be limited to the amount paid by client for analyses. All claims, including those for negligence and any other cause whatsoever shall be deemed waived unless made in writing and received by Cardinal within thirty (30) days after completion of the applicable service. In no event shall Cardinal be liable for incidental or consequential damages, including, without limitation, business interruptions, loss of use, or loss of profits incurred by client, its subsidiaries, affiliates or successors arising out of or related to the performance of the services hereunder by Cardinal, regardless of whether such claim is based upon any of the above stated reasons or otherwise. Results relate only to the samples identified above. This report shall not be reproduced except in full with written approval of Cardinal Laboratories.

Celey D. Keene, Lab Director/Quality Manager



PHONE (575) 393-2326 ° 101 E. MARLAND ° HOBBS, NM 88240

**Analytical Results For:**

TETRA TECH  
 SAM ABBOTT  
 901 WEST WALL STREET , STE 100  
 MIDLAND TX, 79701  
 Fax To: (432) 682-3946

Received:	01/21/2025	Sampling Date:	01/21/2025
Reported:	01/22/2025	Sampling Type:	Soil
Project Name:	CICADA UNIT 022H FLOWLINE RELEASE	Sampling Condition:	Cool & Intact
Project Number:	NONE GIVEN	Sample Received By:	Shalyn Rodriguez
Project Location:	EDDY CO., NM		

**Sample ID: FS - 3 (H250367-03)**

BTEx 8021B		mg/kg		Analyzed By: JH						
Analyte	Result	Reporting Limit	Analyzed	Method Blank	BS	% Recovery	True Value QC	RPD	Qualifier	
Benzene*	<0.050	0.050	01/21/2025	ND	2.13	107	2.00	0.0838		
Toluene*	<0.050	0.050	01/21/2025	ND	2.11	106	2.00	2.60		
Ethylbenzene*	<0.050	0.050	01/21/2025	ND	2.16	108	2.00	3.61		
Total Xylenes*	<0.150	0.150	01/21/2025	ND	6.53	109	6.00	3.68		
Total BTEX	<0.300	0.300	01/21/2025	ND						

Surrogate: 4-Bromofluorobenzene (PID) 121 % 71.5-134

Chloride, SM4500Cl-B		mg/kg		Analyzed By: HM						
Analyte	Result	Reporting Limit	Analyzed	Method Blank	BS	% Recovery	True Value QC	RPD	Qualifier	
Chloride	48.0	16.0	01/22/2025	ND	432	108	400	0.00		

TPH 8015M		mg/kg		Analyzed By: MS						
Analyte	Result	Reporting Limit	Analyzed	Method Blank	BS	% Recovery	True Value QC	RPD	Qualifier	
GRO C6-C10*	<10.0	10.0	01/22/2025	ND	204	102	200	1.96		
DRO >C10-C28*	<10.0	10.0	01/22/2025	ND	211	106	200	4.38		
EXT DRO >C28-C36	<10.0	10.0	01/22/2025	ND						

Surrogate: 1-Chlorooctane 110 % 48.2-134

Surrogate: 1-Chlorooctadecane 114 % 49.1-148

Cardinal Laboratories

\*=Accredited Analyte

PLEASE NOTE: Liability and Damages. Cardinal's liability and client's exclusive remedy for any claim arising, whether based in contract or tort, shall be limited to the amount paid by client for analyses. All claims, including those for negligence and any other cause whatsoever shall be deemed waived unless made in writing and received by Cardinal within thirty (30) days after completion of the applicable service. In no event shall Cardinal be liable for incidental or consequential damages, including, without limitation, business interruptions, loss of use, or loss of profits incurred by client, its subsidiaries, affiliates or successors arising out of or related to the performance of the services hereunder by Cardinal, regardless of whether such claim is based upon any of the above stated reasons or otherwise. Results relate only to the samples identified above. This report shall not be reproduced except in full with written approval of Cardinal Laboratories.

Celey D. Keene, Lab Director/Quality Manager





PHONE (575) 393-2326 ° 101 E. MARLAND ° HOBBS, NM 88240

**Analytical Results For:**

TETRA TECH  
 SAM ABBOTT  
 901 WEST WALL STREET , STE 100  
 MIDLAND TX, 79701  
 Fax To: (432) 682-3946

Received:	01/21/2025	Sampling Date:	01/21/2025
Reported:	01/22/2025	Sampling Type:	Soil
Project Name:	CICADA UNIT 022H FLOWLINE RELEASE	Sampling Condition:	Cool & Intact
Project Number:	NONE GIVEN	Sample Received By:	Shalyn Rodriguez
Project Location:	EDDY CO., NM		

**Sample ID: FS - 4 (H250367-04)**

BTEX 8021B		mg/kg		Analyzed By: JH						
Analyte	Result	Reporting Limit	Analyzed	Method Blank	BS	% Recovery	True Value QC	RPD	Qualifier	
Benzene*	<0.050	0.050	01/21/2025	ND	2.13	107	2.00	0.0838		
Toluene*	<0.050	0.050	01/21/2025	ND	2.11	106	2.00	2.60		
Ethylbenzene*	<0.050	0.050	01/21/2025	ND	2.16	108	2.00	3.61		
Total Xylenes*	<0.150	0.150	01/21/2025	ND	6.53	109	6.00	3.68		
Total BTEX	<0.300	0.300	01/21/2025	ND						

Surrogate: 4-Bromofluorobenzene (PID) 119 % 71.5-134

Chloride, SM4500CI-B		mg/kg		Analyzed By: HM						
Analyte	Result	Reporting Limit	Analyzed	Method Blank	BS	% Recovery	True Value QC	RPD	Qualifier	
Chloride	80.0	16.0	01/22/2025	ND	432	108	400	0.00		

TPH 8015M		mg/kg		Analyzed By: MS					
Analyte	Result	Reporting Limit	Analyzed	Method Blank	BS	% Recovery	True Value QC	RPD	Qualifier
GRO C6-C10*	<10.0	10.0	01/22/2025	ND	204	102	200	1.96	
DRO >C10-C28*	<10.0	10.0	01/22/2025	ND	211	106	200	4.38	
EXT DRO >C28-C36	<10.0	10.0	01/22/2025	ND					

Surrogate: 1-Chlorooctane 102 % 48.2-134

Surrogate: 1-Chlorooctadecane 105 % 49.1-148

Cardinal Laboratories

\*=Accredited Analyte

PLEASE NOTE: Liability and Damages. Cardinal's liability and client's exclusive remedy for any claim arising, whether based in contract or tort, shall be limited to the amount paid by client for analyses. All claims, including those for negligence and any other cause whatsoever shall be deemed waived unless made in writing and received by Cardinal within thirty (30) days after completion of the applicable service. In no event shall Cardinal be liable for incidental or consequential damages, including, without limitation, business interruptions, loss of use, or loss of profits incurred by client, its subsidiaries, affiliates or successors arising out of or related to the performance of the services hereunder by Cardinal, regardless of whether such claim is based upon any of the above stated reasons or otherwise. Results relate only to the samples identified above. This report shall not be reproduced except in full with written approval of Cardinal Laboratories.

Celey D. Keene, Lab Director/Quality Manager



PHONE (575) 393-2326 ° 101 E. MARLAND ° HOBBS, NM 88240

**Analytical Results For:**

TETRA TECH  
 SAM ABBOTT  
 901 WEST WALL STREET , STE 100  
 MIDLAND TX, 79701  
 Fax To: (432) 682-3946

Received:	01/21/2025	Sampling Date:	01/21/2025
Reported:	01/22/2025	Sampling Type:	Soil
Project Name:	CICADA UNIT 022H FLOWLINE RELEASE	Sampling Condition:	Cool & Intact
Project Number:	NONE GIVEN	Sample Received By:	Shalyn Rodriguez
Project Location:	EDDY CO., NM		

**Sample ID: FS - 5 (H250367-05)**

BTEX 8021B		mg/kg		Analyzed By: JH						
Analyte	Result	Reporting Limit	Analyzed	Method Blank	BS	% Recovery	True Value QC	RPD	Qualifier	
Benzene*	<0.050	0.050	01/21/2025	ND	2.13	107	2.00	0.0838		
Toluene*	<0.050	0.050	01/21/2025	ND	2.11	106	2.00	2.60		
Ethylbenzene*	<0.050	0.050	01/21/2025	ND	2.16	108	2.00	3.61		
Total Xylenes*	<0.150	0.150	01/21/2025	ND	6.53	109	6.00	3.68		
Total BTEX	<0.300	0.300	01/21/2025	ND						

Surrogate: 4-Bromofluorobenzene (PID) 119 % 71.5-134

Chloride, SM4500CI-B		mg/kg		Analyzed By: HM						
Analyte	Result	Reporting Limit	Analyzed	Method Blank	BS	% Recovery	True Value QC	RPD	Qualifier	
Chloride	144	16.0	01/22/2025	ND	432	108	400	0.00		

TPH 8015M		mg/kg		Analyzed By: MS					
Analyte	Result	Reporting Limit	Analyzed	Method Blank	BS	% Recovery	True Value QC	RPD	Qualifier
GRO C6-C10*	<10.0	10.0	01/22/2025	ND	204	102	200	1.96	
DRO >C10-C28*	<10.0	10.0	01/22/2025	ND	211	106	200	4.38	
EXT DRO >C28-C36	<10.0	10.0	01/22/2025	ND					

Surrogate: 1-Chlorooctane 114 % 48.2-134

Surrogate: 1-Chlorooctadecane 118 % 49.1-148

Cardinal Laboratories

\*=Accredited Analyte

PLEASE NOTE: Liability and Damages. Cardinal's liability and client's exclusive remedy for any claim arising, whether based in contract or tort, shall be limited to the amount paid by client for analyses. All claims, including those for negligence and any other cause whatsoever shall be deemed waived unless made in writing and received by Cardinal within thirty (30) days after completion of the applicable service. In no event shall Cardinal be liable for incidental or consequential damages, including, without limitation, business interruptions, loss of use, or loss of profits incurred by client, its subsidiaries, affiliates or successors arising out of or related to the performance of the services hereunder by Cardinal, regardless of whether such claim is based upon any of the above stated reasons or otherwise. Results relate only to the samples identified above. This report shall not be reproduced except in full with written approval of Cardinal Laboratories.

Celey D. Keene, Lab Director/Quality Manager



PHONE (575) 393-2326 ° 101 E. MARLAND ° HOBBS, NM 88240

**Analytical Results For:**

TETRA TECH  
 SAM ABBOTT  
 901 WEST WALL STREET , STE 100  
 MIDLAND TX, 79701  
 Fax To: (432) 682-3946

Received:	01/21/2025	Sampling Date:	01/21/2025
Reported:	01/22/2025	Sampling Type:	Soil
Project Name:	CICADA UNIT 022H FLOWLINE RELEASE	Sampling Condition:	Cool & Intact
Project Number:	NONE GIVEN	Sample Received By:	Shalyn Rodriguez
Project Location:	EDDY CO., NM		

**Sample ID: FS - 6 (H250367-06)**

BTEX 8021B		mg/kg		Analyzed By: JH						
Analyte	Result	Reporting Limit	Analyzed	Method Blank	BS	% Recovery	True Value QC	RPD	Qualifier	
Benzene*	<0.050	0.050	01/21/2025	ND	2.13	107	2.00	0.0838		
Toluene*	<0.050	0.050	01/21/2025	ND	2.11	106	2.00	2.60		
Ethylbenzene*	<0.050	0.050	01/21/2025	ND	2.16	108	2.00	3.61		
Total Xylenes*	<0.150	0.150	01/21/2025	ND	6.53	109	6.00	3.68		
Total BTEX	<0.300	0.300	01/21/2025	ND						

Surrogate: 4-Bromofluorobenzene (PID) 122 % 71.5-134

Chloride, SM4500CI-B		mg/kg		Analyzed By: HM						
Analyte	Result	Reporting Limit	Analyzed	Method Blank	BS	% Recovery	True Value QC	RPD	Qualifier	
Chloride	48.0	16.0	01/22/2025	ND	432	108	400	0.00		

TPH 8015M		mg/kg		Analyzed By: MS					
Analyte	Result	Reporting Limit	Analyzed	Method Blank	BS	% Recovery	True Value QC	RPD	Qualifier
GRO C6-C10*	<10.0	10.0	01/22/2025	ND	204	102	200	1.96	
DRO >C10-C28*	<10.0	10.0	01/22/2025	ND	211	106	200	4.38	
EXT DRO >C28-C36	<10.0	10.0	01/22/2025	ND					

Surrogate: 1-Chlorooctane 111 % 48.2-134

Surrogate: 1-Chlorooctadecane 115 % 49.1-148

Cardinal Laboratories

\*=Accredited Analyte

PLEASE NOTE: Liability and Damages. Cardinal's liability and client's exclusive remedy for any claim arising, whether based in contract or tort, shall be limited to the amount paid by client for analyses. All claims, including those for negligence and any other cause whatsoever shall be deemed waived unless made in writing and received by Cardinal within thirty (30) days after completion of the applicable service. In no event shall Cardinal be liable for incidental or consequential damages, including, without limitation, business interruptions, loss of use, or loss of profits incurred by client, its subsidiaries, affiliates or successors arising out of or related to the performance of the services hereunder by Cardinal, regardless of whether such claim is based upon any of the above stated reasons or otherwise. Results relate only to the samples identified above. This report shall not be reproduced except in full with written approval of Cardinal Laboratories.

Celey D. Keene, Lab Director/Quality Manager



PHONE (575) 393-2326 ° 101 E. MARLAND ° HOBBS, NM 88240

**Analytical Results For:**

TETRA TECH  
 SAM ABBOTT  
 901 WEST WALL STREET , STE 100  
 MIDLAND TX, 79701  
 Fax To: (432) 682-3946

Received:	01/21/2025	Sampling Date:	01/21/2025
Reported:	01/22/2025	Sampling Type:	Soil
Project Name:	CICADA UNIT 022H FLOWLINE RELEASE	Sampling Condition:	Cool & Intact
Project Number:	NONE GIVEN	Sample Received By:	Shalyn Rodriguez
Project Location:	EDDY CO., NM		

**Sample ID: FS - 7 (H250367-07)**

BTEX 8021B		mg/kg		Analyzed By: JH						
Analyte	Result	Reporting Limit	Analyzed	Method Blank	BS	% Recovery	True Value QC	RPD	Qualifier	
Benzene*	<0.050	0.050	01/21/2025	ND	2.13	107	2.00	0.0838		
Toluene*	<0.050	0.050	01/21/2025	ND	2.11	106	2.00	2.60		
Ethylbenzene*	<0.050	0.050	01/21/2025	ND	2.16	108	2.00	3.61		
Total Xylenes*	<0.150	0.150	01/21/2025	ND	6.53	109	6.00	3.68		
Total BTEX	<0.300	0.300	01/21/2025	ND						

Surrogate: 4-Bromofluorobenzene (PID) 118 % 71.5-134

Chloride, SM4500CI-B		mg/kg		Analyzed By: HM					
Analyte	Result	Reporting Limit	Analyzed	Method Blank	BS	% Recovery	True Value QC	RPD	Qualifier
Chloride	48.0	16.0	01/22/2025	ND	432	108	400	0.00	

TPH 8015M		mg/kg		Analyzed By: MS					
Analyte	Result	Reporting Limit	Analyzed	Method Blank	BS	% Recovery	True Value QC	RPD	Qualifier
GRO C6-C10*	<10.0	10.0	01/22/2025	ND	204	102	200	1.96	
DRO >C10-C28*	<10.0	10.0	01/22/2025	ND	211	106	200	4.38	
EXT DRO >C28-C36	<10.0	10.0	01/22/2025	ND					

Surrogate: 1-Chlorooctane 116 % 48.2-134

Surrogate: 1-Chlorooctadecane 120 % 49.1-148

Cardinal Laboratories

\*=Accredited Analyte

PLEASE NOTE: Liability and Damages. Cardinal's liability and client's exclusive remedy for any claim arising, whether based in contract or tort, shall be limited to the amount paid by client for analyses. All claims, including those for negligence and any other cause whatsoever shall be deemed waived unless made in writing and received by Cardinal within thirty (30) days after completion of the applicable service. In no event shall Cardinal be liable for incidental or consequential damages, including, without limitation, business interruptions, loss of use, or loss of profits incurred by client, its subsidiaries, affiliates or successors arising out of or related to the performance of the services hereunder by Cardinal, regardless of whether such claim is based upon any of the above stated reasons or otherwise. Results relate only to the samples identified above. This report shall not be reproduced except in full with written approval of Cardinal Laboratories.

Celey D. Keene, Lab Director/Quality Manager





PHONE (575) 393-2326 ° 101 E. MARLAND ° HOBBS, NM 88240

**Analytical Results For:**

TETRA TECH  
 SAM ABBOTT  
 901 WEST WALL STREET , STE 100  
 MIDLAND TX, 79701  
 Fax To: (432) 682-3946

Received:	01/21/2025	Sampling Date:	01/21/2025
Reported:	01/22/2025	Sampling Type:	Soil
Project Name:	CICADA UNIT 022H FLOWLINE RELEASE	Sampling Condition:	Cool & Intact
Project Number:	NONE GIVEN	Sample Received By:	Shalyn Rodriguez
Project Location:	EDDY CO., NM		

**Sample ID: FS - 8 (H250367-08)**

BTEx 8021B		mg/kg		Analyzed By: JH						
Analyte	Result	Reporting Limit	Analyzed	Method Blank	BS	% Recovery	True Value QC	RPD	Qualifier	
Benzene*	<0.050	0.050	01/21/2025	ND	2.13	107	2.00	0.0838		
Toluene*	<0.050	0.050	01/21/2025	ND	2.11	106	2.00	2.60		
Ethylbenzene*	<0.050	0.050	01/21/2025	ND	2.16	108	2.00	3.61		
Total Xylenes*	<0.150	0.150	01/21/2025	ND	6.53	109	6.00	3.68		
Total BTEx	<0.300	0.300	01/21/2025	ND						

Surrogate: 4-Bromofluorobenzene (PID) 119 % 71.5-134

Chloride, SM4500CI-B		mg/kg		Analyzed By: HM						
Analyte	Result	Reporting Limit	Analyzed	Method Blank	BS	% Recovery	True Value QC	RPD	Qualifier	
Chloride	160	16.0	01/22/2025	ND	432	108	400	0.00		

TPH 8015M		mg/kg		Analyzed By: MS					
Analyte	Result	Reporting Limit	Analyzed	Method Blank	BS	% Recovery	True Value QC	RPD	Qualifier
GRO C6-C10*	<10.0	10.0	01/22/2025	ND	204	102	200	1.96	
DRO >C10-C28*	<10.0	10.0	01/22/2025	ND	211	106	200	4.38	
EXT DRO >C28-C36	<10.0	10.0	01/22/2025	ND					

Surrogate: 1-Chlorooctane 115 % 48.2-134

Surrogate: 1-Chlorooctadecane 119 % 49.1-148

Cardinal Laboratories

\*=Accredited Analyte

PLEASE NOTE: Liability and Damages. Cardinal's liability and client's exclusive remedy for any claim arising, whether based in contract or tort, shall be limited to the amount paid by client for analyses. All claims, including those for negligence and any other cause whatsoever shall be deemed waived unless made in writing and received by Cardinal within thirty (30) days after completion of the applicable service. In no event shall Cardinal be liable for incidental or consequential damages, including, without limitation, business interruptions, loss of use, or loss of profits incurred by client, its subsidiaries, affiliates or successors arising out of or related to the performance of the services hereunder by Cardinal, regardless of whether such claim is based upon any of the above stated reasons or otherwise. Results relate only to the samples identified above. This report shall not be reproduced except in full with written approval of Cardinal Laboratories.

Celey D. Keene, Lab Director/Quality Manager



PHONE (575) 393-2326 ° 101 E. MARLAND ° HOBBS, NM 88240

**Analytical Results For:**

TETRA TECH  
 SAM ABBOTT  
 901 WEST WALL STREET , STE 100  
 MIDLAND TX, 79701  
 Fax To: (432) 682-3946

Received:	01/21/2025	Sampling Date:	01/21/2025
Reported:	01/22/2025	Sampling Type:	Soil
Project Name:	CICADA UNIT 022H FLOWLINE RELEASE	Sampling Condition:	Cool & Intact
Project Number:	NONE GIVEN	Sample Received By:	Shalyn Rodriguez
Project Location:	EDDY CO., NM		

**Sample ID: FS - 9 (H250367-09)**

BTEX 8021B		mg/kg		Analyzed By: JH						
Analyte	Result	Reporting Limit	Analyzed	Method Blank	BS	% Recovery	True Value QC	RPD	Qualifier	
Benzene*	<0.050	0.050	01/21/2025	ND	2.13	107	2.00	0.0838		
Toluene*	<0.050	0.050	01/21/2025	ND	2.11	106	2.00	2.60		
Ethylbenzene*	<0.050	0.050	01/21/2025	ND	2.16	108	2.00	3.61		
Total Xylenes*	<0.150	0.150	01/21/2025	ND	6.53	109	6.00	3.68		
Total BTEX	<0.300	0.300	01/21/2025	ND						

Surrogate: 4-Bromofluorobenzene (PID) 117 % 71.5-134

Chloride, SM4500Cl-B		mg/kg		Analyzed By: HM						
Analyte	Result	Reporting Limit	Analyzed	Method Blank	BS	% Recovery	True Value QC	RPD	Qualifier	
Chloride	32.0	16.0	01/22/2025	ND	432	108	400	0.00		

TPH 8015M		mg/kg		Analyzed By: MS					
Analyte	Result	Reporting Limit	Analyzed	Method Blank	BS	% Recovery	True Value QC	RPD	Qualifier
GRO C6-C10*	<10.0	10.0	01/22/2025	ND	204	102	200	1.96	
DRO >C10-C28*	<10.0	10.0	01/22/2025	ND	211	106	200	4.38	
EXT DRO >C28-C36	<10.0	10.0	01/22/2025	ND					

Surrogate: 1-Chlorooctane 110 % 48.2-134

Surrogate: 1-Chlorooctadecane 114 % 49.1-148

Cardinal Laboratories

\*=Accredited Analyte

PLEASE NOTE: Liability and Damages. Cardinal's liability and client's exclusive remedy for any claim arising, whether based in contract or tort, shall be limited to the amount paid by client for analyses. All claims, including those for negligence and any other cause whatsoever shall be deemed waived unless made in writing and received by Cardinal within thirty (30) days after completion of the applicable service. In no event shall Cardinal be liable for incidental or consequential damages, including, without limitation, business interruptions, loss of use, or loss of profits incurred by client, its subsidiaries, affiliates or successors arising out of or related to the performance of the services hereunder by Cardinal, regardless of whether such claim is based upon any of the above stated reasons or otherwise. Results relate only to the samples identified above. This report shall not be reproduced except in full with written approval of Cardinal Laboratories.

Celey D. Keene, Lab Director/Quality Manager



PHONE (575) 393-2326 ° 101 E. MARLAND ° HOBBS, NM 88240

**Analytical Results For:**

TETRA TECH  
 SAM ABBOTT  
 901 WEST WALL STREET , STE 100  
 MIDLAND TX, 79701  
 Fax To: (432) 682-3946

Received:	01/21/2025	Sampling Date:	01/21/2025
Reported:	01/22/2025	Sampling Type:	Soil
Project Name:	CICADA UNIT 022H FLOWLINE RELEASE	Sampling Condition:	Cool & Intact
Project Number:	NONE GIVEN	Sample Received By:	Shalyn Rodriguez
Project Location:	EDDY CO., NM		

**Sample ID: FS - 10 (H250367-10)**

BTEX 8021B		mg/kg		Analyzed By: JH						
Analyte	Result	Reporting Limit	Analyzed	Method Blank	BS	% Recovery	True Value QC	RPD	Qualifier	
Benzene*	<0.050	0.050	01/21/2025	ND	2.13	107	2.00	0.0838		
Toluene*	<0.050	0.050	01/21/2025	ND	2.11	106	2.00	2.60		
Ethylbenzene*	<0.050	0.050	01/21/2025	ND	2.16	108	2.00	3.61		
Total Xylenes*	<0.150	0.150	01/21/2025	ND	6.53	109	6.00	3.68		
Total BTEX	<0.300	0.300	01/21/2025	ND						

Surrogate: 4-Bromofluorobenzene (PID) 122 % 71.5-134

Chloride, SM4500CI-B		mg/kg		Analyzed By: HM						
Analyte	Result	Reporting Limit	Analyzed	Method Blank	BS	% Recovery	True Value QC	RPD	Qualifier	
Chloride	32.0	16.0	01/22/2025	ND	432	108	400	0.00		

TPH 8015M		mg/kg		Analyzed By: MS					
Analyte	Result	Reporting Limit	Analyzed	Method Blank	BS	% Recovery	True Value QC	RPD	Qualifier
GRO C6-C10*	<10.0	10.0	01/22/2025	ND	204	102	200	1.96	
DRO >C10-C28*	<10.0	10.0	01/22/2025	ND	211	106	200	4.38	
EXT DRO >C28-C36	<10.0	10.0	01/22/2025	ND					

Surrogate: 1-Chlorooctane 107 % 48.2-134

Surrogate: 1-Chlorooctadecane 110 % 49.1-148

Cardinal Laboratories

\*=Accredited Analyte

PLEASE NOTE: Liability and Damages. Cardinal's liability and client's exclusive remedy for any claim arising, whether based in contract or tort, shall be limited to the amount paid by client for analyses. All claims, including those for negligence and any other cause whatsoever shall be deemed waived unless made in writing and received by Cardinal within thirty (30) days after completion of the applicable service. In no event shall Cardinal be liable for incidental or consequential damages, including, without limitation, business interruptions, loss of use, or loss of profits incurred by client, its subsidiaries, affiliates or successors arising out of or related to the performance of the services hereunder by Cardinal, regardless of whether such claim is based upon any of the above stated reasons or otherwise. Results relate only to the samples identified above. This report shall not be reproduced except in full with written approval of Cardinal Laboratories.

Celey D. Keene, Lab Director/Quality Manager





PHONE (575) 393-2326 ° 101 E. MARLAND ° HOBBS, NM 88240

**Analytical Results For:**

TETRA TECH  
 SAM ABBOTT  
 901 WEST WALL STREET , STE 100  
 MIDLAND TX, 79701  
 Fax To: (432) 682-3946

Received:	01/21/2025	Sampling Date:	01/21/2025
Reported:	01/22/2025	Sampling Type:	Soil
Project Name:	CICADA UNIT 022H FLOWLINE RELEASE	Sampling Condition:	Cool & Intact
Project Number:	NONE GIVEN	Sample Received By:	Shalyn Rodriguez
Project Location:	EDDY CO., NM		

**Sample ID: FS - 11 (H250367-11)**

BTEX 8021B		mg/kg		Analyzed By: JH						
Analyte	Result	Reporting Limit	Analyzed	Method Blank	BS	% Recovery	True Value QC	RPD	Qualifier	
Benzene*	<0.050	0.050	01/21/2025	ND	2.13	107	2.00	0.0838		
Toluene*	<0.050	0.050	01/21/2025	ND	2.11	106	2.00	2.60		
Ethylbenzene*	<0.050	0.050	01/21/2025	ND	2.16	108	2.00	3.61		
Total Xylenes*	<0.150	0.150	01/21/2025	ND	6.53	109	6.00	3.68		
Total BTEX	<0.300	0.300	01/21/2025	ND						

Surrogate: 4-Bromofluorobenzene (PID) 122 % 71.5-134

Chloride, SM4500CI-B		mg/kg		Analyzed By: HM						
Analyte	Result	Reporting Limit	Analyzed	Method Blank	BS	% Recovery	True Value QC	RPD	Qualifier	
Chloride	32.0	16.0	01/22/2025	ND	432	108	400	0.00		

TPH 8015M		mg/kg		Analyzed By: MS					
Analyte	Result	Reporting Limit	Analyzed	Method Blank	BS	% Recovery	True Value QC	RPD	Qualifier
GRO C6-C10*	<10.0	10.0	01/22/2025	ND	204	102	200	1.96	
DRO >C10-C28*	<10.0	10.0	01/22/2025	ND	211	106	200	4.38	
EXT DRO >C28-C36	<10.0	10.0	01/22/2025	ND					

Surrogate: 1-Chlorooctane 99.3 % 48.2-134

Surrogate: 1-Chlorooctadecane 101 % 49.1-148

Cardinal Laboratories

\*=Accredited Analyte

PLEASE NOTE: Liability and Damages. Cardinal's liability and client's exclusive remedy for any claim arising, whether based in contract or tort, shall be limited to the amount paid by client for analyses. All claims, including those for negligence and any other cause whatsoever shall be deemed waived unless made in writing and received by Cardinal within thirty (30) days after completion of the applicable service. In no event shall Cardinal be liable for incidental or consequential damages, including, without limitation, business interruptions, loss of use, or loss of profits incurred by client, its subsidiaries, affiliates or successors arising out of or related to the performance of the services hereunder by Cardinal, regardless of whether such claim is based upon any of the above stated reasons or otherwise. Results relate only to the samples identified above. This report shall not be reproduced except in full with written approval of Cardinal Laboratories.

Celey D. Keene, Lab Director/Quality Manager



PHONE (575) 393-2326 ° 101 E. MARLAND ° HOBBS, NM 88240

**Analytical Results For:**

TETRA TECH  
 SAM ABBOTT  
 901 WEST WALL STREET , STE 100  
 MIDLAND TX, 79701  
 Fax To: (432) 682-3946

Received:	01/21/2025	Sampling Date:	01/21/2025
Reported:	01/22/2025	Sampling Type:	Soil
Project Name:	CICADA UNIT 022H FLOWLINE RELEASE	Sampling Condition:	Cool & Intact
Project Number:	NONE GIVEN	Sample Received By:	Shalyn Rodriguez
Project Location:	EDDY CO., NM		

**Sample ID: NSW - 1 (H250367-12)**

BTEX 8021B		mg/kg		Analyzed By: JH						
Analyte	Result	Reporting Limit	Analyzed	Method Blank	BS	% Recovery	True Value QC	RPD	Qualifier	
Benzene*	<0.050	0.050	01/22/2025	ND	2.13	107	2.00	0.0838		
Toluene*	<0.050	0.050	01/22/2025	ND	2.11	106	2.00	2.60		
Ethylbenzene*	<0.050	0.050	01/22/2025	ND	2.16	108	2.00	3.61		
Total Xylenes*	<0.150	0.150	01/22/2025	ND	6.53	109	6.00	3.68		
Total BTEX	<0.300	0.300	01/22/2025	ND						

Surrogate: 4-Bromofluorobenzene (PID) 119 % 71.5-134

Chloride, SM4500CI-B		mg/kg		Analyzed By: HM						
Analyte	Result	Reporting Limit	Analyzed	Method Blank	BS	% Recovery	True Value QC	RPD	Qualifier	
Chloride	256	16.0	01/22/2025	ND	432	108	400	0.00		

TPH 8015M		mg/kg		Analyzed By: MS					
Analyte	Result	Reporting Limit	Analyzed	Method Blank	BS	% Recovery	True Value QC	RPD	Qualifier
GRO C6-C10*	<10.0	10.0	01/22/2025	ND	204	102	200	1.96	
DRO >C10-C28*	<10.0	10.0	01/22/2025	ND	211	106	200	4.38	
EXT DRO >C28-C36	<10.0	10.0	01/22/2025	ND					

Surrogate: 1-Chlorooctane 109 % 48.2-134

Surrogate: 1-Chlorooctadecane 111 % 49.1-148

Cardinal Laboratories

\*=Accredited Analyte

PLEASE NOTE: Liability and Damages. Cardinal's liability and client's exclusive remedy for any claim arising, whether based in contract or tort, shall be limited to the amount paid by client for analyses. All claims, including those for negligence and any other cause whatsoever shall be deemed waived unless made in writing and received by Cardinal within thirty (30) days after completion of the applicable service. In no event shall Cardinal be liable for incidental or consequential damages, including, without limitation, business interruptions, loss of use, or loss of profits incurred by client, its subsidiaries, affiliates or successors arising out of or related to the performance of the services hereunder by Cardinal, regardless of whether such claim is based upon any of the above stated reasons or otherwise. Results relate only to the samples identified above. This report shall not be reproduced except in full with written approval of Cardinal Laboratories.

Celey D. Keene, Lab Director/Quality Manager



PHONE (575) 393-2326 ° 101 E. MARLAND ° HOBBS, NM 88240

**Analytical Results For:**

TETRA TECH  
 SAM ABBOTT  
 901 WEST WALL STREET , STE 100  
 MIDLAND TX, 79701  
 Fax To: (432) 682-3946

Received:	01/21/2025	Sampling Date:	01/21/2025
Reported:	01/22/2025	Sampling Type:	Soil
Project Name:	CICADA UNIT 022H FLOWLINE RELEASE	Sampling Condition:	Cool & Intact
Project Number:	NONE GIVEN	Sample Received By:	Shalyn Rodriguez
Project Location:	EDDY CO., NM		

**Sample ID: ESW - 1 (H250367-13)**

BTEX 8021B		mg/kg		Analyzed By: JH					
Analyte	Result	Reporting Limit	Analyzed	Method Blank	BS	% Recovery	True Value QC	RPD	Qualifier
Benzene*	<0.050	0.050	01/22/2025	ND	2.13	107	2.00	0.0838	
Toluene*	<0.050	0.050	01/22/2025	ND	2.11	106	2.00	2.60	
Ethylbenzene*	<0.050	0.050	01/22/2025	ND	2.16	108	2.00	3.61	
Total Xylenes*	<0.150	0.150	01/22/2025	ND	6.53	109	6.00	3.68	
Total BTEX	<0.300	0.300	01/22/2025	ND					

Surrogate: 4-Bromofluorobenzene (PID) 124 % 71.5-134

Chloride, SM4500Cl-B		mg/kg		Analyzed By: KV						
Analyte	Result	Reporting Limit	Analyzed	Method Blank	BS	% Recovery	True Value QC	RPD	Qualifier	
Chloride	256	16.0	01/22/2025	ND	416	104	400	0.00		

TPH 8015M		mg/kg		Analyzed By: MS					
Analyte	Result	Reporting Limit	Analyzed	Method Blank	BS	% Recovery	True Value QC	RPD	Qualifier
GRO C6-C10*	<10.0	10.0	01/22/2025	ND	204	102	200	1.96	
DRO >C10-C28*	<10.0	10.0	01/22/2025	ND	211	106	200	4.38	
EXT DRO >C28-C36	<10.0	10.0	01/22/2025	ND					

Surrogate: 1-Chlorooctane 103 % 48.2-134

Surrogate: 1-Chlorooctadecane 106 % 49.1-148

Cardinal Laboratories

\*=Accredited Analyte

PLEASE NOTE: Liability and Damages. Cardinal's liability and client's exclusive remedy for any claim arising, whether based in contract or tort, shall be limited to the amount paid by client for analyses. All claims, including those for negligence and any other cause whatsoever shall be deemed waived unless made in writing and received by Cardinal within thirty (30) days after completion of the applicable service. In no event shall Cardinal be liable for incidental or consequential damages, including, without limitation, business interruptions, loss of use, or loss of profits incurred by client, its subsidiaries, affiliates or successors arising out of or related to the performance of the services hereunder by Cardinal, regardless of whether such claim is based upon any of the above stated reasons or otherwise. Results relate only to the samples identified above. This report shall not be reproduced except in full with written approval of Cardinal Laboratories.

Celey D. Keene, Lab Director/Quality Manager





PHONE (575) 393-2326 ° 101 E. MARLAND ° HOBBS, NM 88240

**Analytical Results For:**

TETRA TECH  
 SAM ABBOTT  
 901 WEST WALL STREET , STE 100  
 MIDLAND TX, 79701  
 Fax To: (432) 682-3946

Received:	01/21/2025	Sampling Date:	01/21/2025
Reported:	01/22/2025	Sampling Type:	Soil
Project Name:	CICADA UNIT 022H FLOWLINE RELEASE	Sampling Condition:	Cool & Intact
Project Number:	NONE GIVEN	Sample Received By:	Shalyn Rodriguez
Project Location:	EDDY CO., NM		

**Sample ID: WSW - 1 (H250367-14)**

BTEX 8021B		mg/kg		Analyzed By: JH						
Analyte	Result	Reporting Limit	Analyzed	Method Blank	BS	% Recovery	True Value QC	RPD	Qualifier	
Benzene*	<0.050	0.050	01/22/2025	ND	2.13	107	2.00	0.0838		
Toluene*	<0.050	0.050	01/22/2025	ND	2.11	106	2.00	2.60		
Ethylbenzene*	<0.050	0.050	01/22/2025	ND	2.16	108	2.00	3.61		
Total Xylenes*	<0.150	0.150	01/22/2025	ND	6.53	109	6.00	3.68		
Total BTEX	<0.300	0.300	01/22/2025	ND						

Surrogate: 4-Bromofluorobenzene (PID) 116 % 71.5-134

Chloride, SM4500CI-B		mg/kg		Analyzed By: KV						
Analyte	Result	Reporting Limit	Analyzed	Method Blank	BS	% Recovery	True Value QC	RPD	Qualifier	
Chloride	112	16.0	01/22/2025	ND	416	104	400	0.00		

TPH 8015M		mg/kg		Analyzed By: MS					
Analyte	Result	Reporting Limit	Analyzed	Method Blank	BS	% Recovery	True Value QC	RPD	Qualifier
GRO C6-C10*	<10.0	10.0	01/22/2025	ND	204	102	200	1.96	
DRO >C10-C28*	<10.0	10.0	01/22/2025	ND	211	106	200	4.38	
EXT DRO >C28-C36	<10.0	10.0	01/22/2025	ND					

Surrogate: 1-Chlorooctane 107 % 48.2-134

Surrogate: 1-Chlorooctadecane 110 % 49.1-148

Cardinal Laboratories

\*=Accredited Analyte

PLEASE NOTE: Liability and Damages. Cardinal's liability and client's exclusive remedy for any claim arising, whether based in contract or tort, shall be limited to the amount paid by client for analyses. All claims, including those for negligence and any other cause whatsoever shall be deemed waived unless made in writing and received by Cardinal within thirty (30) days after completion of the applicable service. In no event shall Cardinal be liable for incidental or consequential damages, including, without limitation, business interruptions, loss of use, or loss of profits incurred by client, its subsidiaries, affiliates or successors arising out of or related to the performance of the services hereunder by Cardinal, regardless of whether such claim is based upon any of the above stated reasons or otherwise. Results relate only to the samples identified above. This report shall not be reproduced except in full with written approval of Cardinal Laboratories.

Celey D. Keene, Lab Director/Quality Manager



PHONE (575) 393-2326 ° 101 E. MARLAND ° HOBBS, NM 88240

**Analytical Results For:**

TETRA TECH  
 SAM ABBOTT  
 901 WEST WALL STREET , STE 100  
 MIDLAND TX, 79701  
 Fax To: (432) 682-3946

Received:	01/21/2025	Sampling Date:	01/21/2025
Reported:	01/22/2025	Sampling Type:	Soil
Project Name:	CICADA UNIT 022H FLOWLINE RELEASE	Sampling Condition:	Cool & Intact
Project Number:	NONE GIVEN	Sample Received By:	Shalyn Rodriguez
Project Location:	EDDY CO., NM		

**Sample ID: WSW - 2 (H250367-15)**

BTEX 8021B		mg/kg		Analyzed By: JH						
Analyte	Result	Reporting Limit	Analyzed	Method Blank	BS	% Recovery	True Value QC	RPD	Qualifier	
Benzene*	<0.050	0.050	01/22/2025	ND	2.13	107	2.00	0.0838		
Toluene*	<0.050	0.050	01/22/2025	ND	2.11	106	2.00	2.60		
Ethylbenzene*	<0.050	0.050	01/22/2025	ND	2.16	108	2.00	3.61		
Total Xylenes*	<0.150	0.150	01/22/2025	ND	6.53	109	6.00	3.68		
Total BTEX	<0.300	0.300	01/22/2025	ND						

Surrogate: 4-Bromofluorobenzene (PID) 122 % 71.5-134

Chloride, SM4500CI-B		mg/kg		Analyzed By: KV						
Analyte	Result	Reporting Limit	Analyzed	Method Blank	BS	% Recovery	True Value QC	RPD	Qualifier	
Chloride	32.0	16.0	01/22/2025	ND	416	104	400	0.00		

TPH 8015M		mg/kg		Analyzed By: MS					
Analyte	Result	Reporting Limit	Analyzed	Method Blank	BS	% Recovery	True Value QC	RPD	Qualifier
GRO C6-C10*	<10.0	10.0	01/22/2025	ND	204	102	200	1.96	
DRO >C10-C28*	<10.0	10.0	01/22/2025	ND	211	106	200	4.38	
EXT DRO >C28-C36	<10.0	10.0	01/22/2025	ND					

Surrogate: 1-Chlorooctane 108 % 48.2-134

Surrogate: 1-Chlorooctadecane 109 % 49.1-148

Cardinal Laboratories

\*=Accredited Analyte

PLEASE NOTE: Liability and Damages. Cardinal's liability and client's exclusive remedy for any claim arising, whether based in contract or tort, shall be limited to the amount paid by client for analyses. All claims, including those for negligence and any other cause whatsoever shall be deemed waived unless made in writing and received by Cardinal within thirty (30) days after completion of the applicable service. In no event shall Cardinal be liable for incidental or consequential damages, including, without limitation, business interruptions, loss of use, or loss of profits incurred by client, its subsidiaries, affiliates or successors arising out of or related to the performance of the services hereunder by Cardinal, regardless of whether such claim is based upon any of the above stated reasons or otherwise. Results relate only to the samples identified above. This report shall not be reproduced except in full with written approval of Cardinal Laboratories.

Celey D. Keene, Lab Director/Quality Manager



PHONE (575) 393-2326 ° 101 E. MARLAND ° HOBBS, NM 88240

**Analytical Results For:**

TETRA TECH  
 SAM ABBOTT  
 901 WEST WALL STREET , STE 100  
 MIDLAND TX, 79701  
 Fax To: (432) 682-3946

Received:	01/21/2025	Sampling Date:	01/21/2025
Reported:	01/22/2025	Sampling Type:	Soil
Project Name:	CICADA UNIT 022H FLOWLINE RELEASE	Sampling Condition:	Cool & Intact
Project Number:	NONE GIVEN	Sample Received By:	Shalyn Rodriguez
Project Location:	EDDY CO., NM		

**Sample ID: SSW - 1 (H250367-16)**

BTEX 8021B		mg/kg		Analyzed By: JH						
Analyte	Result	Reporting Limit	Analyzed	Method Blank	BS	% Recovery	True Value QC	RPD	Qualifier	
Benzene*	<0.050	0.050	01/22/2025	ND	2.13	107	2.00	0.0838		
Toluene*	<0.050	0.050	01/22/2025	ND	2.11	106	2.00	2.60		
Ethylbenzene*	<0.050	0.050	01/22/2025	ND	2.16	108	2.00	3.61		
Total Xylenes*	<0.150	0.150	01/22/2025	ND	6.53	109	6.00	3.68		
Total BTEX	<0.300	0.300	01/22/2025	ND						

Surrogate: 4-Bromofluorobenzene (PID) 116 % 71.5-134

Chloride, SM4500CI-B		mg/kg		Analyzed By: KV						
Analyte	Result	Reporting Limit	Analyzed	Method Blank	BS	% Recovery	True Value QC	RPD	Qualifier	
Chloride	32.0	16.0	01/22/2025	ND	416	104	400	0.00		

TPH 8015M		mg/kg		Analyzed By: MS					
Analyte	Result	Reporting Limit	Analyzed	Method Blank	BS	% Recovery	True Value QC	RPD	Qualifier
GRO C6-C10*	<10.0	10.0	01/22/2025	ND	204	102	200	1.96	
DRO >C10-C28*	<10.0	10.0	01/22/2025	ND	211	106	200	4.38	
EXT DRO >C28-C36	<10.0	10.0	01/22/2025	ND					

Surrogate: 1-Chlorooctane 112 % 48.2-134

Surrogate: 1-Chlorooctadecane 114 % 49.1-148

Cardinal Laboratories

\*=Accredited Analyte

PLEASE NOTE: Liability and Damages. Cardinal's liability and client's exclusive remedy for any claim arising, whether based in contract or tort, shall be limited to the amount paid by client for analyses. All claims, including those for negligence and any other cause whatsoever shall be deemed waived unless made in writing and received by Cardinal within thirty (30) days after completion of the applicable service. In no event shall Cardinal be liable for incidental or consequential damages, including, without limitation, business interruptions, loss of use, or loss of profits incurred by client, its subsidiaries, affiliates or successors arising out of or related to the performance of the services hereunder by Cardinal, regardless of whether such claim is based upon any of the above stated reasons or otherwise. Results relate only to the samples identified above. This report shall not be reproduced except in full with written approval of Cardinal Laboratories.

Celey D. Keene, Lab Director/Quality Manager





PHONE (575) 393-2326 ° 101 E. MARLAND ° HOBBS, NM 88240

**Analytical Results For:**

TETRA TECH  
 SAM ABBOTT  
 901 WEST WALL STREET , STE 100  
 MIDLAND TX, 79701  
 Fax To: (432) 682-3946

Received:	01/21/2025	Sampling Date:	01/21/2025
Reported:	01/22/2025	Sampling Type:	Soil
Project Name:	CICADA UNIT 022H FLOWLINE RELEASE	Sampling Condition:	Cool & Intact
Project Number:	NONE GIVEN	Sample Received By:	Shalyn Rodriguez
Project Location:	EDDY CO., NM		

**Sample ID: SSW - 2 (H250367-17)**

BTEX 8021B		mg/kg		Analyzed By: JH						
Analyte	Result	Reporting Limit	Analyzed	Method Blank	BS	% Recovery	True Value QC	RPD	Qualifier	
Benzene*	<0.050	0.050	01/22/2025	ND	2.13	107	2.00	0.0838		
Toluene*	<0.050	0.050	01/22/2025	ND	2.11	106	2.00	2.60		
Ethylbenzene*	<0.050	0.050	01/22/2025	ND	2.16	108	2.00	3.61		
Total Xylenes*	<0.150	0.150	01/22/2025	ND	6.53	109	6.00	3.68		
Total BTEX	<0.300	0.300	01/22/2025	ND						

Surrogate: 4-Bromofluorobenzene (PID) 120 % 71.5-134

Chloride, SM4500Cl-B		mg/kg		Analyzed By: KV					
Analyte	Result	Reporting Limit	Analyzed	Method Blank	BS	% Recovery	True Value QC	RPD	Qualifier
Chloride	128	16.0	01/22/2025	ND	416	104	400	0.00	

TPH 8015M		mg/kg		Analyzed By: MS					
Analyte	Result	Reporting Limit	Analyzed	Method Blank	BS	% Recovery	True Value QC	RPD	Qualifier
GRO C6-C10*	<10.0	10.0	01/21/2025	ND	206	103	200	0.895	
DRO >C10-C28*	<10.0	10.0	01/21/2025	ND	209	105	200	0.864	
EXT DRO >C28-C36	<10.0	10.0	01/21/2025	ND					

Surrogate: 1-Chlorooctane 107 % 48.2-134

Surrogate: 1-Chlorooctadecane 109 % 49.1-148

Cardinal Laboratories

\*=Accredited Analyte

PLEASE NOTE: Liability and Damages. Cardinal's liability and client's exclusive remedy for any claim arising, whether based in contract or tort, shall be limited to the amount paid by client for analyses. All claims, including those for negligence and any other cause whatsoever shall be deemed waived unless made in writing and received by Cardinal within thirty (30) days after completion of the applicable service. In no event shall Cardinal be liable for incidental or consequential damages, including, without limitation, business interruptions, loss of use, or loss of profits incurred by client, its subsidiaries, affiliates or successors arising out of or related to the performance of the services hereunder by Cardinal, regardless of whether such claim is based upon any of the above stated reasons or otherwise. Results relate only to the samples identified above. This report shall not be reproduced except in full with written approval of Cardinal Laboratories.

Celey D. Keene, Lab Director/Quality Manager



---

PHONE (575) 393-2326 • 101 E. MARLAND • HOBBS, NM 88240

---

### Notes and Definitions

QM-07	The spike recovery was outside acceptance limits for the MS and/or MSD. The batch was accepted based on acceptable LCS recovery.
ND	Analyte NOT DETECTED at or above the reporting limit
RPD	Relative Percent Difference
**	Samples not received at proper temperature of 6°C or below.
***	Insufficient time to reach temperature.
-	Chloride by SM4500Cl-B does not require samples be received at or below 6°C Samples reported on an as received basis (wet) unless otherwise noted on report

---

Cardinal Laboratories

\*=Accredited Analyte

PLEASE NOTE: Liability and Damages. Cardinal's liability and client's exclusive remedy for any claim arising, whether based in contract or tort, shall be limited to the amount paid by client for analyses. All claims, including those for negligence and any other cause whatsoever shall be deemed waived unless made in writing and received by Cardinal within thirty (30) days after completion of the applicable service. In no event shall Cardinal be liable for incidental or consequential damages, including, without limitation, business interruptions, loss of use, or loss of profits incurred by client, its subsidiaries, affiliates or successors arising out of or related to the performance of the services hereunder by Cardinal, regardless of whether such claim is based upon any of the above stated reasons or otherwise. Results relate only to the samples identified above. This report shall not be reproduced except in full with written approval of Cardinal Laboratories.

A handwritten signature in black ink, appearing to read "Celey D. Keene".

---

Celey D. Keene, Lab Director/Quality Manager



101 East Marland, Hobbs, NM 88240  
(575) 393-2326 FAX (575) 393-2476

# CHAIN-OF-CUSTODY AND ANALYSIS REQUEST

page 1 of 2

Page 20 of 21

Company Name: <u>Tetra Tech - Chevron</u>				<b>BILL TO</b>				<b>ANALYSIS REQUEST</b>															
Project Manager: <u>Sam Abbott</u>				P.O. #:																			
Address:				Company: <u>Tetra Tech</u>																			
City:		State:		Zip:		Attn: <u>Sam Abbott</u>																	
Phone #:		Fax #:		Address:																			
Project #:		Project Owner:		City:																			
Project Name: <u>Licada Unit #022H Flowline</u>				State:																Zip:			
Project Location: <u>Eddy Co, NM</u>				Phone #:																			
Sampler Name: <u>Andrew Garcia</u>				Fax #:																			
FOR LAB USE ONLY																							
Lab I.D.		Sample I.D.		(GRAB OR (C)OMP.		# CONTAINERS		MATRIX				PRESERV.		SAMPLING									
								GROUNDWATER WASTEWATER SOIL OIL SLUDGE OTHER:				ACID/BASE: ICE / COOL OTHER:		DATE TIME									
<u>H2503607</u>				<u>C</u>		<u>1</u>						<u>X</u>		<u>1/21/24</u> <u>900</u>									
<u>1</u>		<u>FS-1</u>		<u>1</u>		<u>1</u>						<u>X</u>		<u>915</u>									
<u>2</u>		<u>FS-2</u>		<u>1</u>		<u>1</u>						<u>X</u>		<u>930</u>									
<u>3</u>		<u>FS-3</u>		<u>1</u>		<u>1</u>						<u>X</u>		<u>945</u>									
<u>4</u>		<u>FS-4</u>		<u>1</u>		<u>1</u>						<u>X</u>		<u>1000</u>									
<u>5</u>		<u>FS-5</u>		<u>1</u>		<u>1</u>						<u>X</u>		<u>1030</u>									
<u>6</u>		<u>FS-6</u>		<u>1</u>		<u>1</u>						<u>X</u>		<u>1045</u>									
<u>7</u>		<u>FS-7</u>		<u>1</u>		<u>1</u>						<u>X</u>		<u>1100</u>									
<u>8</u>		<u>FS-8</u>		<u>1</u>		<u>1</u>						<u>X</u>		<u>1130</u>									
<u>9</u>		<u>FS-9</u>		<u>1</u>		<u>1</u>						<u>X</u>		<u>1145</u>									
<u>10</u>		<u>FS-10</u>		<u>1</u>		<u>1</u>						<u>X</u>											

PLEASE NOTE: Liability and Damages. Cardinal's liability and client's exclusive remedy for any claim arising whether based in contract or tort, shall be limited to the amount paid by the client for the analyses. All claims including those for negligence and any other cause whatsoever shall be deemed waived unless made in writing and received by Cardinal within 30 days after completion of the applicable service. In no event shall Cardinal be liable for incidental or consequential damages, including without limitation, business interruptions, loss of use, or loss of profits incurred by client, its subsidiaries, affiliates or successors arising out of or related to the performance of services hereunder by Cardinal, regardless of whether such claim is based upon any of the above stated reasons or otherwise.

Relinquished By: <u>Andrew Garcia</u>		Date: <u>21 Jan 24</u>		Received By: <u>Shodkiney</u>		Verbal Result: <input type="checkbox"/> Yes <input type="checkbox"/> No Add'l Phone #:	
Time: <u>1153</u>		Time: <u>1153</u>		Time: <u>1153</u>		All Results are emailed. Please provide Email address: <u>Sam.Abbott@tetratech.com</u>	
Relinquished By:		Date:		Received By:		REMARKS: <u>Andrew.Garcia@tetratech.com</u>	
Time:		Time:		Time:		Time:	
Delivered By: (Circle One)		Observed Temp. °C <u>2-1c</u>		Sample Condition Cool Intact <input checked="" type="checkbox"/> Yes <input type="checkbox"/> No		CHECKED BY: (Initials) <u>SK</u>	
Sampler - UPS - Bus - Other:		Corrected Temp. °C <u>1-5c</u>		Cool Intact <input checked="" type="checkbox"/> Yes <input type="checkbox"/> No		Turnaround Time: <u>Standard</u> <input type="checkbox"/> Rush <input checked="" type="checkbox"/> Bacteria (only) Sample Condition Cool Intact <input checked="" type="checkbox"/> Yes <input type="checkbox"/> No Observed Temp. °C <u>24 HR</u> Corrected Temp. °C	
FORM-006 R 3.3 06/03/24						Thermometer ID #140 Correction Factor -0.6°C	

† Cardinal cannot accept verbal changes. Please email changes to [celey.keene@cardinallabsnm.com](mailto:celey.keene@cardinallabsnm.com)





**CARDINAL**  
Laboratories

**101 East Marland, Hobbs, NM 88240**  
**(575) 393-2326 FAX (575) 393-2476**

### CHAIN-OF-CUSTODY AND ANALYSIS REQUEST

page 2 of 2

Page 21 of 21

BILL TO										ANALYSIS REQUEST															
Company Name: Tetra Tech - Chevron					P.O. #:					<div style="display: flex; justify-content: space-around;"> <div>BTEX</div> <div>TPH</div> <div>Chlorides</div> </div>															
Project Manager: Sam Abbott					Company: Tetra Tech																				
Address:					Attn: Sam Abbott																				
City: State: Zip:					Address:																				
Phone #: Fax #:					City:																				
Project #: Project Owner:					State: Zip:																				
Project Name: Cicada Unit #022H Flowline Release					Phone #:																				
Project Location: Eddy Co, NM					Fax #:																				
Sampler Name: Andrew Garcia																									
FOR LAB USE ONLY																									
Lab I.D.		Sample I.D.		(G)RAB OR (C)OMP.		# CONTAINERS		MATRIX		PRESERV.		SAMPLING													
#250367				C		1		GROUNDWATER		ACID/BASE:		DATE		TIME											
11		FS-11						WASTEWATER		ICE/COOL		1/21/24		1200											
12		NSW-1						SOIL		OTHER:				1215											
13		ESW-1						OIL		OTHER:				1230											
14		WSW-1						SLUDGE		OTHER:				1245											
15		WSW-2						OTHER:		ACID/BASE:				1300											
16		SSW-1						OTHER:		ICE/COOL				1330											
17		SSW-2						OTHER:		OTHER:				1345											

PLEASE NOTE: Liability and Damages. Cardinal's liability and client's exclusive remedy for any claim arising whether based in contract or tort, shall be limited to the amount paid by the client for the analyses. All claims including those for negligence and any other cause whatsoever shall be deemed waived unless made in writing and received by Cardinal within 30 days after completion of the applicable service. In no event shall Cardinal be liable for incidental or consequential damages, including without limitation, business interruptions, loss of use, or loss of profits incurred by client, its subsidiaries, or affiliates. This limitation shall apply regardless of whether such claim is based upon any of the above stated reasons or otherwise.

Relinquished By: Andrew Garcia		Date: 21 Jan 24	Received By: SRookki gnu	Verbal Result: <input type="checkbox"/> Yes <input type="checkbox"/> No Add'l Phone #:	
		Time: 1053		All Results are emailed. Please provide Email address: Sam.Abbott@tetratex.com	
Relinquished By:		Date:	Received By:	REMARKS:	
		Time:		Andrew.Garcia@tetratex.com	
Delivered By: (Circle One)	Observed Temp. °C 2.1	Sample Condition Cool Intact <input type="checkbox"/> Yes <input type="checkbox"/> Yes <input type="checkbox"/> No <input type="checkbox"/> No	CHECKED BY: (Initials) SR	Turnaround Time:	Standard <input type="checkbox"/> Bacteria (only) Sample Condition
Sampler - UPS - Bus - Other:	Corrected Temp. °C 1.5			Rush <input checked="" type="checkbox"/>	Cool Intact Observed Temp. °C
				Thermometer ID #140 Correction Factor -0.6°C	24 HR <input type="checkbox"/> Yes <input type="checkbox"/> Yes <input type="checkbox"/> No <input type="checkbox"/> No Corrected Temp. °C

~~FORM-006 R 3.5 06/05/24~~

† Cardinal cannot accept verbal changes. Please email changes to [celey.keene@cardinallabsnm.com](mailto:celey.keene@cardinallabsnm.com)



Sante Fe Main Office  
Phone: (505) 476-3441

General Information  
Phone: (505) 629-6116

Online Phone Directory  
<https://www.emnrd.nm.gov/ocd/contact-us>

State of New Mexico

Energy, Minerals and Natural Resources

Oil Conservation Division

1220 S. St Francis Dr.

Santa Fe, NM 87505

QUESTIONS

Action 426712

QUESTIONS

Operator: CHEVRON U S A INC 6301 Deauville Blvd Midland, TX 79706	OGRID: 4323
	Action Number: 426712
	Action Type: [C-141] Remediation Closure Request C-141 (C-141-v-Closure)

QUESTIONS

Prerequisites	
Incident ID (n#)	nAPP2414869489
Incident Name	NAPP2414869489 CICADA UNIT #022H @ 30-015-45423
Incident Type	Produced Water Release
Incident Status	Remediation Closure Report Received
Incident Well	[30-015-45423] CICADA UNIT #022H

Location of Release Source	
Please answer all the questions in this group.	
Site Name	CICADA UNIT #022H
Date Release Discovered	05/27/2024
Surface Owner	Federal

Incident Details	
Please answer all the questions in this group.	
Incident Type	Produced Water Release
Did this release result in a fire or is the result of a fire	No
Did this release result in any injuries	No
Has this release reached or does it have a reasonable probability of reaching a watercourse	No
Has this release endangered or does it have a reasonable probability of endangering public health	No
Has this release substantially damaged or will it substantially damage property or the environment	No
Is this release of a volume that is or may with reasonable probability be detrimental to fresh water	No

Nature and Volume of Release	
Material(s) released, please answer all that apply below. Any calculations or specific justifications for the volumes provided should be attached to the follow-up C-141 submission.	
Crude Oil Released (bbls) Details	Cause: Corrosion   Flow Line - Production   Crude Oil   Released: 12 BBL   Recovered: 1 BBL   Lost: 11 BBL.
Produced Water Released (bbls) Details	Cause: Corrosion   Flow Line - Production   Produced Water   Released: 59 BBL   Recovered: 4 BBL   Lost: 55 BBL.
Is the concentration of chloride in the produced water >10,000 mg/l	Yes
Condensate Released (bbls) Details	Not answered.
Natural Gas Vented (Mcf) Details	Not answered.
Natural Gas Flared (Mcf) Details	Not answered.
Other Released Details	Not answered.
Are there additional details for the questions above (i.e. any answer containing Other, Specify, Unknown, and/or Fire, or any negative lost amounts)	Not answered.

Sante Fe Main Office  
Phone: (505) 476-3441

General Information  
Phone: (505) 629-6116

Online Phone Directory  
<https://www.emnrd.nm.gov/ocd/contact-us>

**State of New Mexico**  
**Energy, Minerals and Natural Resources**  
**Oil Conservation Division**  
**1220 S. St Francis Dr.**  
**Santa Fe, NM 87505**

QUESTIONS, Page 2

Action 426712

**QUESTIONS (continued)**

Operator: CHEVRON U S A INC 6301 Deauville Blvd Midland, TX 79706	OGRID: 4323
	Action Number: 426712
	Action Type: [C-141] Remediation Closure Request C-141 (C-141-v-Closure)

**QUESTIONS**

<b>Nature and Volume of Release (continued)</b>	
Is this a gas only submission (i.e. only significant Mcf values reported)	No, according to supplied volumes this does not appear to be a "gas only" report.
Was this a major release as defined by Subsection A of 19.15.29.7 NMAC	Yes
Reasons why this would be considered a submission for a notification of a major release	From paragraph A. "Major release" determine using: (1) an unauthorized release of a volume, excluding gases, of 25 barrels or more.
With the implementation of the 19.15.27 NMAC (05/25/2021), venting and/or flaring of natural gas (i.e. gas only) are to be submitted on the C-129 form.	

**Initial Response**

The responsible party must undertake the following actions immediately unless they could create a safety hazard that would result in injury.

The source of the release has been stopped	True
The impacted area has been secured to protect human health and the environment	True
Released materials have been contained via the use of berms or dikes, absorbent pads, or other containment devices	True
All free liquids and recoverable materials have been removed and managed appropriately	True
If all the actions described above have not been undertaken, explain why	Not answered.

Per Paragraph (4) of Subsection B of 19.15.29.8 NMAC the responsible party may commence remediation immediately after discovery of a release. If remediation has begun, please prepare and attach a narrative of actions to date in the follow-up C-141 submission. If remedial efforts have been successfully completed or if the release occurred within a lined containment area (see Subparagraph (a) of Paragraph (5) of Subsection A of 19.15.29.11 NMAC), please prepare and attach all information needed for closure evaluation in the follow-up C-141 submission.

I hereby certify that the information given above is true and complete to the best of my knowledge and understand that pursuant to OCD rules and regulations all operators are required to report and/or file certain release notifications and perform corrective actions for releases which may endanger public health or the environment. The acceptance of a C-141 report by the OCD does not relieve the operator of liability should their operations have failed to adequately investigate and remediate contamination that pose a threat to groundwater, surface water, human health or the environment. In addition, OCD acceptance of a C-141 report does not relieve the operator of responsibility for compliance with any other federal, state, or local laws and/or regulations.

I hereby agree and sign off to the above statement	Name: Kennedy Lincoln Title: Environmental Specialist Email: kennedy.lincoln@chevron.com Date: 05/30/2024
--	--

Sante Fe Main Office  
Phone: (505) 476-3441

General Information  
Phone: (505) 629-6116

Online Phone Directory  
<https://www.emnrd.nm.gov/ocd/contact-us>

**State of New Mexico**  
**Energy, Minerals and Natural Resources**  
**Oil Conservation Division**  
**1220 S. St Francis Dr.**  
**Santa Fe, NM 87505**

QUESTIONS, Page 3

Action 426712

**QUESTIONS (continued)**

Operator:  CHEVRON U S A INC 6301 Deauville Blvd Midland, TX 79706	OGRID:  4323
	Action Number:  426712
	Action Type:  [C-141] Remediation Closure Request C-141 (C-141-v-Closure)

**QUESTIONS**

<b>Site Characterization</b>	
<i>Please answer all the questions in this group (only required when seeking remediation plan approval and beyond). This information must be provided to the appropriate district office no later than 90 days after the release discovery date.</i>	
What is the shallowest depth to groundwater beneath the area affected by the release in feet below ground surface (ft bgs)	Between 51 and 75 (ft.)
What method was used to determine the depth to ground water	NM OSE iWaters Database Search
Did this release impact groundwater or surface water	No
<b>What is the minimum distance, between the closest lateral extents of the release and the following surface areas:</b>	
A continuously flowing watercourse or any other significant watercourse	Greater than 5 (mi.)
Any lakebed, sinkhole, or playa lake (measured from the ordinary high-water mark)	Greater than 5 (mi.)
An occupied permanent residence, school, hospital, institution, or church	Greater than 5 (mi.)
A spring or a private domestic fresh water well used by less than five households for domestic or stock watering purposes	Between 1 and 5 (mi.)
Any other fresh water well or spring	Between 1 and 5 (mi.)
Incorporated municipal boundaries or a defined municipal fresh water well field	Greater than 5 (mi.)
A wetland	Between ½ and 1 (mi.)
A subsurface mine	Greater than 5 (mi.)
An (non-karst) unstable area	Greater than 5 (mi.)
Categorize the risk of this well / site being in a karst geology	High
A 100-year floodplain	Between ½ and 1 (mi.)
Did the release impact areas not on an exploration, development, production, or storage site	No

<b>Remediation Plan</b>	
<i>Please answer all the questions that apply or are indicated. This information must be provided to the appropriate district office no later than 90 days after the release discovery date.</i>	
Requesting a remediation plan approval with this submission	Yes
<i>Attach a comprehensive report demonstrating the lateral and vertical extents of soil contamination associated with the release have been determined, pursuant to 19.15.29.11 NMAC and 19.15.29.13 NMAC.</i>	
Have the lateral and vertical extents of contamination been fully delineated	Yes
Was this release entirely contained within a lined containment area	No
<b>Soil Contamination Sampling:</b> (Provide the highest observable value for each, in milligrams per kilograms.)	
Chloride (EPA 300.0 or SM4500 Cl B)	1420
TPH (GRO+DRO+MRO) (EPA SW-846 Method 8015M)	511
GRO+DRO (EPA SW-846 Method 8015M)	510
BTEX (EPA SW-846 Method 8021B or 8260B)	0
Benzene (EPA SW-846 Method 8021B or 8260B)	0
<i>Per Subsection B of 19.15.29.11 NMAC unless the site characterization report includes completed efforts at remediation, the report must include a proposed remediation plan in accordance with 19.15.29.12 NMAC, which includes the anticipated timelines for beginning and completing the remediation.</i>	
On what estimated date will the remediation commence	12/02/2024
On what date will (or did) the final sampling or liner inspection occur	12/13/2024
On what date will (or was) the remediation complete(d)	12/20/2024
What is the estimated surface area (in square feet) that will be reclaimed	3510
What is the estimated volume (in cubic yards) that will be reclaimed	155
What is the estimated surface area (in square feet) that will be remediated	3510
What is the estimated volume (in cubic yards) that will be remediated	155
<i>These estimated dates and measurements are recognized to be the best guess or calculation at the time of submission and may (be) change(d) over time as more remediation efforts are completed.</i>	
<i>The OCD recognizes that proposed remediation measures may have to be minimally adjusted in accordance with the physical realities encountered during remediation. If the responsible party has any need to significantly deviate from the remediation plan proposed, then it should consult with the division to determine if another remediation plan submission is required.</i>	



Sante Fe Main Office  
Phone: (505) 476-3441

General Information  
Phone: (505) 629-6116

Online Phone Directory  
<https://www.emnrd.nm.gov/ocd/contact-us>

**State of New Mexico**  
**Energy, Minerals and Natural Resources**  
**Oil Conservation Division**  
**1220 S. St Francis Dr.**  
**Santa Fe, NM 87505**

QUESTIONS, Page 4

Action 426712

**QUESTIONS (continued)**

Operator:  CHEVRON U S A INC 6301 Deauville Blvd Midland, TX 79706	OGRID:
	4323
	Action Number:
	426712
Action Type:	
[C-141] Remediation Closure Request C-141 (C-141-v-Closure)	

**QUESTIONS**

<b>Remediation Plan (continued)</b>	
<i>Please answer all the questions that apply or are indicated. This information must be provided to the appropriate district office no later than 90 days after the release discovery date.</i>	
<b>This remediation will (or is expected to) utilize the following processes to remediate / reduce contaminants:</b>	
<i>(Select all answers below that apply.)</i>	
(Ex Situ) Excavation and <b>off-site</b> disposal (i.e. dig and haul, hydrovac, etc.)	Yes
Which OCD approved facility will be used for <b>off-site</b> disposal	Not answered.
<b>OR</b> which OCD approved well (API) will be used for <b>off-site</b> disposal	Not answered.
<b>OR</b> is the <b>off-site</b> disposal site, to be used, out-of-state	Yes
In which state is the disposal taking place	Texas
What is the name of the out-of-state facility	Red Bluff Facility
<b>OR</b> is the <b>off-site</b> disposal site, to be used, an NMED facility	No
(Ex Situ) Excavation and <b>on-site</b> remediation (i.e. On-Site Land Farms)	No
(In Situ) Soil Vapor Extraction	No
(In Situ) Chemical processing (i.e. Soil Shredding, Potassium Permanganate, etc.)	No
(In Situ) Biological processing (i.e. Microbes / Fertilizer, etc.)	No
(In Situ) Physical processing (i.e. Soil Washing, Gypsum, Disking, etc.)	No
Ground Water Abatement pursuant to 19.15.30 NMAC	No
OTHER (Non-listed remedial process)	No
<i>Per Subsection B of 19.15.29.11 NMAC unless the site characterization report includes completed efforts at remediation, the report must include a proposed remediation plan in accordance with 19.15.29.12 NMAC, which includes the anticipated timelines for beginning and completing the remediation.</i>	
I hereby certify that the information given above is true and complete to the best of my knowledge and understand that pursuant to OCD rules and regulations all operators are required to report and/or file certain release notifications and perform corrective actions for releases which may endanger public health or the environment. The acceptance of a C-141 report by the OCD does not relieve the operator of liability should their operations have failed to adequately investigate and remediate contamination that pose a threat to groundwater, surface water, human health or the environment. In addition, OCD acceptance of a C-141 report does not relieve the operator of responsibility for compliance with any other federal, state, or local laws and/or regulations.	
I hereby agree and sign off to the above statement	Name: Kennedy Lincoln Title: Environmental Specialist Email: kennedy.lincoln@chevron.com Date: 01/30/2025
<i>The OCD recognizes that proposed remediation measures may have to be minimally adjusted in accordance with the physical realities encountered during remediation. If the responsible party has any need to significantly deviate from the remediation plan proposed, then it should consult with the division to determine if another remediation plan submission is required.</i>	

Sante Fe Main Office  
Phone: (505) 476-3441

General Information  
Phone: (505) 629-6116

Online Phone Directory  
<https://www.emnrd.nm.gov/ocd/contact-us>

State of New Mexico  
Energy, Minerals and Natural Resources  
Oil Conservation Division  
1220 S. St Francis Dr.  
Santa Fe, NM 87505

QUESTIONS, Page 5

Action 426712

QUESTIONS (continued)

Operator:  CHEVRON U S A INC 6301 Deauville Blvd Midland, TX 79706	OGRID:  4323
	Action Number:  426712
	Action Type:  [C-141] Remediation Closure Request C-141 (C-141-v-Closure)

QUESTIONS

Deferral Requests Only	
Only answer the questions in this group if seeking a deferral upon approval this submission. Each of the following items must be confirmed as part of any request for deferral of remediation.	
Requesting a deferral of the remediation closure due date with the approval of this submission	No

Sante Fe Main Office  
Phone: (505) 476-3441

General Information  
Phone: (505) 629-6116

Online Phone Directory  
<https://www.emnrd.nm.gov/ocd/contact-us>

**State of New Mexico**  
**Energy, Minerals and Natural Resources**  
**Oil Conservation Division**  
**1220 S. St Francis Dr.**  
**Santa Fe, NM 87505**

QUESTIONS, Page 6

Action 426712

**QUESTIONS (continued)**

Operator: CHEVRON U S A INC 6301 Deauville Blvd Midland, TX 79706	OGRID: 4323
	Action Number: 426712
	Action Type: [C-141] Remediation Closure Request C-141 (C-141-v-Closure)

**QUESTIONS**

Sampling Event Information	
Last sampling notification (C-141N) recorded	420477
Sampling date pursuant to Subparagraph (a) of Paragraph (1) of Subsection D of 19.15.29.12 NMAC	01/21/2025
What was the (estimated) number of samples that were to be gathered	17
What was the sampling surface area in square feet	4090

**Remediation Closure Request**

*Only answer the questions in this group if seeking remediation closure for this release because all remediation steps have been completed.*

Requesting a remediation closure approval with this submission	Yes
Have the lateral and vertical extents of contamination been fully delineated	Yes
Was this release entirely contained within a lined containment area	No
All areas reasonably needed for production or subsequent drilling operations have been stabilized, returned to the sites existing grade, and have a soil cover that prevents ponding of water, minimizing dust and erosion	Yes
What was the total surface area (in square feet) remediated	2990
What was the total volume (cubic yards) remediated	155
All areas not reasonably needed for production or subsequent drilling operations have been reclaimed to contain a minimum of four feet of non-waste contain earthen material with concentrations less than 600 mg/kg chlorides, 100 mg/kg TPH, 50 mg/kg BTEX, and 10 mg/kg Benzene	Yes
What was the total surface area (in square feet) reclaimed	0
What was the total volume (in cubic yards) reclaimed	0
Summarize any additional remediation activities not included by answers (above)	On May 27-29, 2024, Chevron personnel hydroexcavated soils around the release point and the buried lines in order to repair the below grade flowline leak. Approximately 62.5 cubic yards of contaminated soil and water were transported to the R360 Red Bluff facility. On June 5, 2024, a surface (approximately 6- inch) scrape of visibly impacted soils was conducted. Following each phase of the initial response activities, the area was backfilled with clean material to surface grade.
<i>The responsible party must attach information demonstrating they have complied with all applicable closure requirements and any conditions or directives of the OCD. This demonstration should be in the form of a comprehensive report (in .pdf format) including a scaled site map, sampling diagrams, relevant field notes, photographs of any excavation prior to backfilling, laboratory data including chain of custody documents of final sampling, and a narrative of the remedial activities. Refer to 19.15.29.12 NMAC.</i>	
I hereby certify that the information given above is true and complete to the best of my knowledge and understand that pursuant to OCD rules and regulations all operators are required to report and/or file certain release notifications and perform corrective actions for releases which may endanger public health or the environment. The acceptance of a C-141 report by the OCD does not relieve the operator of liability should their operations have failed to adequately investigate and remediate contamination that pose a threat to groundwater, surface water, human health or the environment. In addition, OCD acceptance of a C-141 report does not relieve the operator of responsibility for compliance with any other federal, state, or local laws and/or regulations. The responsible party acknowledges they must substantially restore, reclaim, and re-vegetate the impacted surface area to the conditions that existed prior to the release or their final land use in accordance with 19.15.29.13 NMAC including notification to the OCD when reclamation and re-vegetation are complete.	
I hereby agree and sign off to the above statement	Name: Kennedy Lincoln Title: Environmental Specialist Email: kennedy.lincoln@chevron.com Date: 01/30/2025

Sante Fe Main Office  
Phone: (505) 476-3441

General Information  
Phone: (505) 629-6116

Online Phone Directory  
<https://www.emnrd.nm.gov/ocd/contact-us>

State of New Mexico  
Energy, Minerals and Natural Resources  
Oil Conservation Division  
1220 S. St Francis Dr.  
Santa Fe, NM 87505

QUESTIONS, Page 7

Action 426712

QUESTIONS (continued)

Operator:  CHEVRON U S A INC 6301 Deauville Blvd Midland, TX 79706	OGRID:  4323
	Action Number:  426712
	Action Type:  [C-141] Remediation Closure Request C-141 (C-141-v-Closure)

QUESTIONS

Reclamation Report	
Only answer the questions in this group if all reclamation steps have been completed.	
Requesting a reclamation approval with this submission	No



Sante Fe Main Office  
Phone: (505) 476-3441

General Information  
Phone: (505) 629-6116

Online Phone Directory  
<https://www.emnrd.nm.gov/ocd/contact-us>

State of New Mexico  
Energy, Minerals and Natural Resources  
Oil Conservation Division  
1220 S. St Francis Dr.  
Santa Fe, NM 87505

CONDITIONS

Action 426712

CONDITIONS

Operator: CHEVRON U S A INC 6301 Deauville Blvd Midland, TX 79706	OGRID: 4323
	Action Number: 426712
	Action Type: [C-141] Remediation Closure Request C-141 (C-141-v-Closure)

CONDITIONS

Created By	Condition	Condition Date
nvez	None	5/16/2025