



PREPARED BY:
PIMA ENVIRONMENTAL SERVICES, LLC

PREPARED FOR:
Spur Energy



Grave Digger St Com 3H TB

Incident ID NAPP2506428606

Liner Inspection and Closure Report

April 16, 2025



Pima Environmental Services
5614 N. Lovington Highway
Hobbs, NM 88240
575-964-7740

FACILITY NAME	GRAVE DIGGER ST COM 3H TB
DATE OF RELEASE	3/2/2025
INCIDENT NO.	NAPP2506428606

Site Characterization	
DTGW What is the shallowest DTGW beneath the area affected by the release in ft below ground surface (ft bgs)	Between 100 and 500 ft.
GW Depth Determination What method was used to determine the DTGW?	U.S Geological Survey
Ground or Surface Water Impacted Did this release impact GW or Surface Water?	No
What is the min. distance between the closest lateral extents of the release and the following surace areas?	
Distance to Watercourse A continuously flowing watercourse or any other significant watercourse?	1-5 mi
Distance to Lakebed Any lakebed, sinkhole, or playa lake (measured from the ordinary high-water mark)?	> 5 mi.
Distance to Public An occupied permanent residence, school, hospital, institution, or church?	Between 1 mi. and 5 mi.
Distance to Private A spring or a private domestic FW well used by less than five households for domestic or stock watering purposes?	> 5 mi.
Distance to Fresh Water Any other FW well spring?	Between 1/2 mi. and 1 mi.
Within Municipal Boundaries Incorporated municipal boundaries or a defined municipal FW well field?	> 5 mi.
Distance to Wetland A wetland?	Between 1 mi. and 5 mi.
Overlying Subsurface Mine A subsurface mine?	> 5 mi.
Overlying (Non-Karst) Unstable Area An (non-karst) unstable area?	0 ft, overlying, or within area
Risk of Karst Geology Catergorize the risk of this well/site being in a karst geology?	High
Distance to or Within 100 yr Floodplain A 100-year floodplain?	Between 1/2 mi. and 1 mi.
Areas NOT Other Site Did the release impact areas not on exploration, development, production, or storage site?	Yes
Remediation Plan	
Have the lateral and vertical extents of contamination been fully delineated?	Yes

Lined Containment Area Only Was this release entirely contained within a lined containment area?	No
Soil Containment Sampling	(EPA 300.00 or SM4500 Cl B?)
Chloride Constituent Chloride (mg/kg)	2,440
	(EPA SW-846 Method 8015M)?
TPH (GRO+DRO+MRO) Constituent TPH (mg/kg)	0
	(EPA SW-846 Method 8015M)?
GRO + DRO Constituent GRO-DRO (mg/kg)	0
	(EPA SW-846 Method 8021B or 8260B)?
BTEX Constituent BTEX (mg/kg)	0
	(EPA SW-846 Method 8021B or 8260B)?
Benzene Constituent Benzene (mg/kg)	0
Per Subsection B of 19.15.29.11 NMAC unless the site characterization report includes competed efforts at remediation, the report must include a proposed remediation plan in accordance with 19.15.29 NMAC, which includes the anticipated timelines for beginning and completing the remediation.	
Start of Remediation On what estimated date will remediation commence?	3/20/2025
Start of Sampling or Liner Inspection On what date will (or did) the final sampling or liner inspection occur?	3/26/2025
Finish of Remediation On what date will (or was) the remediation complete(d)?	4/1/2025
Surface Area (sq ft) To Be Reclaimed What is the estimated surface area (in sq ft) that will be reclaimed?	1,000
Surface Area (sq ft) To Be Remediated What is the estimated surface area (in sq ft) that will be remediated?	1,000
Volume (cu yd) To Be Remediated What is the estimated volume (in cubic yds) that will be remediated?	20
Remediation Plan (Cont.) Please answer all that apply	
Ex Situ Excavation Off-Site (Ex Situ) Excavation and off-site disposal (i.e. dig and haul, hydrovac, etc)?	Yes
Ex Situ Excavation On-Site (Ex Situ) Excavation and on-site remediation (i.e. On-Site Land Farms)?	No
In Situ Soil Vapor Extraction (SVE)?	No
In Situ Chemical Processing (in Situ) Chemical processing (i.e. Soil Shredding, Potassium Permanganate, etc.)?	No
In Situ Biological Processing (In Situ) Biological processing (i.e. Microbes/Fertilizer, etc.)?	No
In Situ Physical Processing (In Situ) Physical processing (i.e. Soil Washing, Gypsum, Disking, etc.)?	No
In Situ Ground Water Abatement GW Abatement pursuant to 19.15.30 NMAC?	No
Remediation Other Other (Non-listed remedial process)?	No
Deferral Request Only	
Requesting a deferral of the remediation closure due date with the approval of this submission	No

Remediation Closure Request (Only answer the questions in this group if seeking remediation closure for this release because all remediation steps have been completed)	
Requesting a remediation closure approval with this submission?	Yes
Have the lateral and vertical extents of contamination been fully delineated?	Yes
Was this release entirely contained within a lined containment area?	No
Restored Areas For Production Use All areas reasonably needed for production or subsequent drilling operations have been stabilized, returned to the sites existing grade, and have a soil cover that prevents ponding of water, minimizing dust and erosion?	Yes
Total Surface Area (sq ft) Remediated What was the total surface area (sq ft) remediated?	1,000
Total Volume (cu yd) Remediated What was the total volume (cubic yards) remediated?	20
Reclaimed to Condition Prior Release All areas not reasonably needed for production or subsequent drilling operations have been reclaimed to contain a minimum of four ft of non-waste contain earthen material with concentrations less than 600 mg/kg chlorides, 100 mg/kg TPH, 50 mg/kg BTEX and 10 mg/kg Benzene?	Yes
Total Surface Area (sq ft) Reclaimed What was the total surface area (in sq ft) reclaimed?	1,000
Remediation Summary Summarize any additional remediation activities not included by answers (above).	The lined containment was power-washed, and all standing fluids were recovered using a vacuum truck. Following cleanup, a liner inspection was conducted and confirmed that the containment liner maintained its integrity. The impacted area outside the lined containment was excavated, confirmation samples were collected, and the area was backfilled with clean material.



Pima Environmental Services
5614 N. Lovington Highway
Hobbs, NM 88240
575-964-7740

April 16, 2025

NMOCD District 2
811 S. First St
Artesia, NM, 88210

RE: Liner Inspection and Closure Report
Grave Digger St Com 3H TB
API No. 30-015-39151
GPS: Latitude 32.60878 Longitude -104.45253
UL- B, Section 02, Township 20S, Range 25E
NMOCD Reference No. NAPP2506428606

Spur Energy Partners (Spur) engaged Pima Environmental Services, LLC (Pima) to conduct remediation activities, liner inspection and prepare this closure report addressing the release of produced water at the Grave Digger St Com 3H TB (Grave). An initial C-141 was submitted on March 5, 2025, and the New Mexico Oil Conservation Division (NMOCD) assigned the incident ID NAPP2506428606 to this event.

In the initial Notice of Release (NOR) and C-141, it was incorrectly stated that all fluid remained within the lined containment. However, a fine mist of fluid was released beyond the containment area, impacting the adjacent pasture to the east. Approximately 0.5 barrels of fluid were released outside the lined containment, affecting an area of approximately 1,200 square feet. We respectfully request a variance to amend the original NOR and C-141 to accurately reflect the release that occurred outside the containment area.

Site Information and Site Characterization

The Grave is located approximately 2.0 miles northwest of Seven Rivers, NM. This spill site is in Unit B, Section 02, Township 20S, Range 25E, Latitude 32.60878 Longitude -104.45253, Eddy County, NM. A Location Map can be found in Figure 1.

Based on the well water data from the New Mexico Office of the State Engineer, the depth to the nearest groundwater in this vicinity measures greater than 100 feet below grade surface (BGS), positioned roughly 0.93 miles away from the Grave, with the last meter reading being completed on August 26, 1953. Conversely, as per the United States Geological Survey well water data, the nearest groundwater depth in this region is recorded at 148.28 feet BGS, situated approximately 0.59 miles away from the Grave, with the last gauge conducted on January 23, 2003. For detailed references to water surveys and the precise locations of water wells, please refer to Appendix A, inclusive of the relevant maps. Notably, the Grave is situated within an area with a high potential for karst, as illustrated in Figure 3. Additionally, a comprehensive Topographic Map is available for reference in Figure 2.

Release Information

NAPP2506428606: On March 2, 2025, an equipment failure led to the release of approximately 63 barrels of produced water into the lined containment. A fine mist extended beyond the containment to the east side of the tank battery. Spur personnel responded promptly, stopping the release and successfully recovering all 63 barrels of produced water.

A Site Map can be found in Figure 4.

Site Assessment and Liner Inspection

On March 23, 2025, Spur personnel submitted a notification for a liner inspection, adhering to the necessary 48-hour notice period. The details of the 48-hour notification can be referenced in Appendix C.

On March 26, 2025, Pima Environmental conducted a thorough inspection of the lined containment area. The evaluation process

included cleaning the liner with a power washer and using a vacuum truck to ensure the complete removal of any residual fluids. The inspection confirmed that the system remained intact and successfully retained all fluids. As a result, the liner was deemed functional, preventing any further environmental impact. A detailed report, including photographic evidence, is provided in Appendices C and D.

On March 11, 2025, Pima Environmental deployed a field technician to collect delineation samples from the impacted pasture area. The impact, limited to a fine mist from the release, affected approximately 1,200 square feet outside the lined containment. To achieve vertical delineation, three bottom samples (V1–V3) were collected at depths ranging from the surface to four feet bgs. For horizontal delineation, two soil samples (H1 & H2) were taken at depths of 0.5 feet and 1-foot bgs. The sampling results are summarized in the accompanying data table, with the full laboratory report provided in Appendix E.

3-11-25 Soil Sample Results								
NMOCD Table 1 Closure Criteria 19.15.29 NMAC (Depth to Groundwater is <50')								
Spur Energy Grave Digger St. Com 3H TB								
Date: 3-11-25		NM Approved Laboratory Results						
Sample ID	Depth (BGS)	BTEX mg/kg	Benzene mg/kg	GRO mg/kg	DRO mg/kg	MRO mg/kg	Total TPH mg/kg	Cl mg/kg
V1	Surface	<0.300	<0.050	<10.0	<10.0	<10.0	<30.0	1840
V1	2'	<0.300	<0.050	<10.0	<10.0	<10.0	<30.0	432
V1	4'	<0.300	<0.050	<10.0	<10.0	<10.0	<30.0	32
V2	Surface	<0.300	<0.050	<10.0	<10.0	<10.0	<30.0	2440
V2	2'	<0.300	<0.050	<10.0	<10.0	<10.0	<30.0	496
V2	4'	<0.300	<0.050	<10.0	<10.0	<10.0	<30.0	208
V3	Surface	<0.300	<0.050	<10.0	<10.0	<10.0	<30.0	64
V3	2'	<0.300	<0.050	<10.0	<10.0	<10.0	<30.0	<16.0
V3	4'	<0.300	<0.050	<10.0	<10.0	<10.0	<30.0	<16.0
H1	0.5'	<0.300	<0.050	<10.0	<10.0	<10.0	<30.0	<16.0
H1	1'	<0.300	<0.050	<10.0	<10.0	<10.0	<30.0	<16.0
H2	0.5'	<0.300	<0.050	<10.0	<10.0	<10.0	<30.0	<16.0
H2	1'	<0.300	<0.050	<10.0	<10.0	<10.0	<30.0	16

A total of thirteen (13) samples were collected for laboratory analysis for total chloride using EPA Method 300.0; benzene, toluene, ethylbenzene and total xylenes (BTEX) using EPA Method 8021B; and motor, diesel, and gasoline range organics (MRO, DRO, & GRO) by EPA Method 8015D. All samples were placed into laboratory supplied glassware, labeled, and maintained on ice until delivery to Cardinal Laboratories in Hobbs, New Mexico (Appendix C).

Remediation Activities

Between March 20 and March 26, Pima Environmental deployed a heavy equipment operator and a spotter to remediate the impacted area located on the east side of the lined containment in the pasture. The top six inches of impacted soil were excavated, resulting in the removal of approximately 20 cubic yards of contaminated material. This material was transported to Lea Land, an NMOCD-approved landfill, for proper disposal. The total excavated area measured approximately 1,000 square feet, with a perimeter of about 150 feet.

On March 23, 2025, Spur Energy proactively submitted a 48-hour sampling notification as part of the preliminary preparations leading up to the final confirmation sampling event. This precautionary step was taken with the expectation that all sampling results would fall below the closure criteria established by the New Mexico Oil Conservation Division (NMOCD). Should the results confirm compliance, the plan is to move forward with the closure process. For additional details, the 48-hour notification can be referenced in Appendix C.

On March 26, 2025, a Pima field technician conducted a confirmation sampling event at the Gravedigger site. During this event, five composite bottom samples (CS1–CS5) and five composite sidewall samples (CSW1–CSW5) were collected. In addition, one sample of the backfill material was obtained to verify that clean material was used for backfilling. The excavation area covered approximately 1,000 square feet, with a perimeter of roughly 150 feet. The results of the confirmation sampling are summarized in the data table below.

3-26-25 Confirmation Soil Sample Results

NMOCD Table 1 Closure Criteria 19.15.29 NMAC (Depth to Groundwater is <50')								
Spur Energy GRAVE DIGGER ST. COM 3H TB								
Date: 3-26-25		NM Approved Laboratory Results						
Sample ID	Depth (BGS)	BTEX mg/kg	Benzene mg/kg	GRO mg/kg	DRO mg/kg	MRO mg/kg	Total TPH mg/kg	Cl mg/kg
CS1	0.5'	<0.300	<0.050	<10.0	<10.0	<10.0	<30.0	32
CS2	0.5'	<0.300	<0.050	<10.0	<10.0	<10.0	<30.0	16
CS3	0.5'	<0.300	<0.050	<10.0	<10.0	<10.0	<30.0	16
CS4	0.5'	<0.300	<0.050	<10.0	<10.0	<10.0	<30.0	16
CS5	0.5'	<0.300	<0.050	<10.0	<10.0	<10.0	<30.0	ND
CSW1	0-0.5'	<0.300	<0.050	<10.0	<10.0	<10.0	<30.0	16
CSW2	0-0.5'	<0.300	<0.050	<10.0	<10.0	<10.0	<30.0	ND
CSW3	0-0.5'	<0.300	<0.050	<10.0	<10.0	<10.0	<30.0	32
CSW4	0-0.5'	<0.300	<0.050	<10.0	<10.0	<10.0	<30.0	ND
CSW5	0-0.5'	<0.300	<0.050	<10.0	<10.0	<10.0	<30.0	ND
Backfill	N/A	<0.300	<0.050	<10.0	<10.0	<10.0	<30.0	ND

ND- Analyte Not Detected

Each soil sample was a 5-point composite derived from the excavated area, specifically representing an area not exceeding 200 square feet of the open excavation. A total of eleven (11) samples were collected for laboratory analysis for total chloride using EPA Method 300.0; benzene, toluene, ethylbenzene and total xylenes (BTEX) using EPA Method 8021B; and motor, diesel, and gasoline range organics (MRO, DRO, & GRO) by EPA Method 8015D. All samples were placed into laboratory supplied glassware, labeled, and maintained on ice until delivery to Cardinal Laboratories in Hobbs, New Mexico (Appendix C).

Upon confirmation that all soil samples met the closure standards set by the New Mexico Oil Conservation Division (NMOCD), clean backfill material was brought in and utilized to restore the excavated area, returning it to its original state.

Closure Request

After careful review, Pima requests that this incident nAPP2506428606 be closed. Spur has complied with the applicable closure requirements.

For questions or additional information, please feel free to contact:

Spur Energy – Katherine Purvis at 575-441-8619 or katherine.purvis@spurenergy.com

Pima Environmental Services – Sebastian Orozco at 619-721-4813 or Sebastian@pimaoil.com.

Attachments

Figures:

- 1- Location Map
- 2- Topographic Map
- 3- Karst Map
- 4- Delineation Sample Map
- 5- Confirmation Sample Map

Appendices:

- Appendix A- Referenced Water Surveys
- Appendix B- Soil Survey, Geological Data, FEMA Flood Map, Wetland Map
- Appendix C- 48 Hour Notification and Liner Inspection Form
- Appendix D- Photographic Documentation
- Appendix E – Laboratory Reports

Figures:

Figure 1- Location Map

Figure 2- Topographic Map

Figure 3- Karst Map

Figure 4- Delineation Sample Map

Figure 5- Confirmation Sample Map

GRAVE DIGGER ST COM 3H TB

Spur Energy
Eddy County, NM
NAPP2506428606
Location Map

Page 9 of 82

Legend

- 2.0 Miles
- Grave Digger St Com 3H Battery



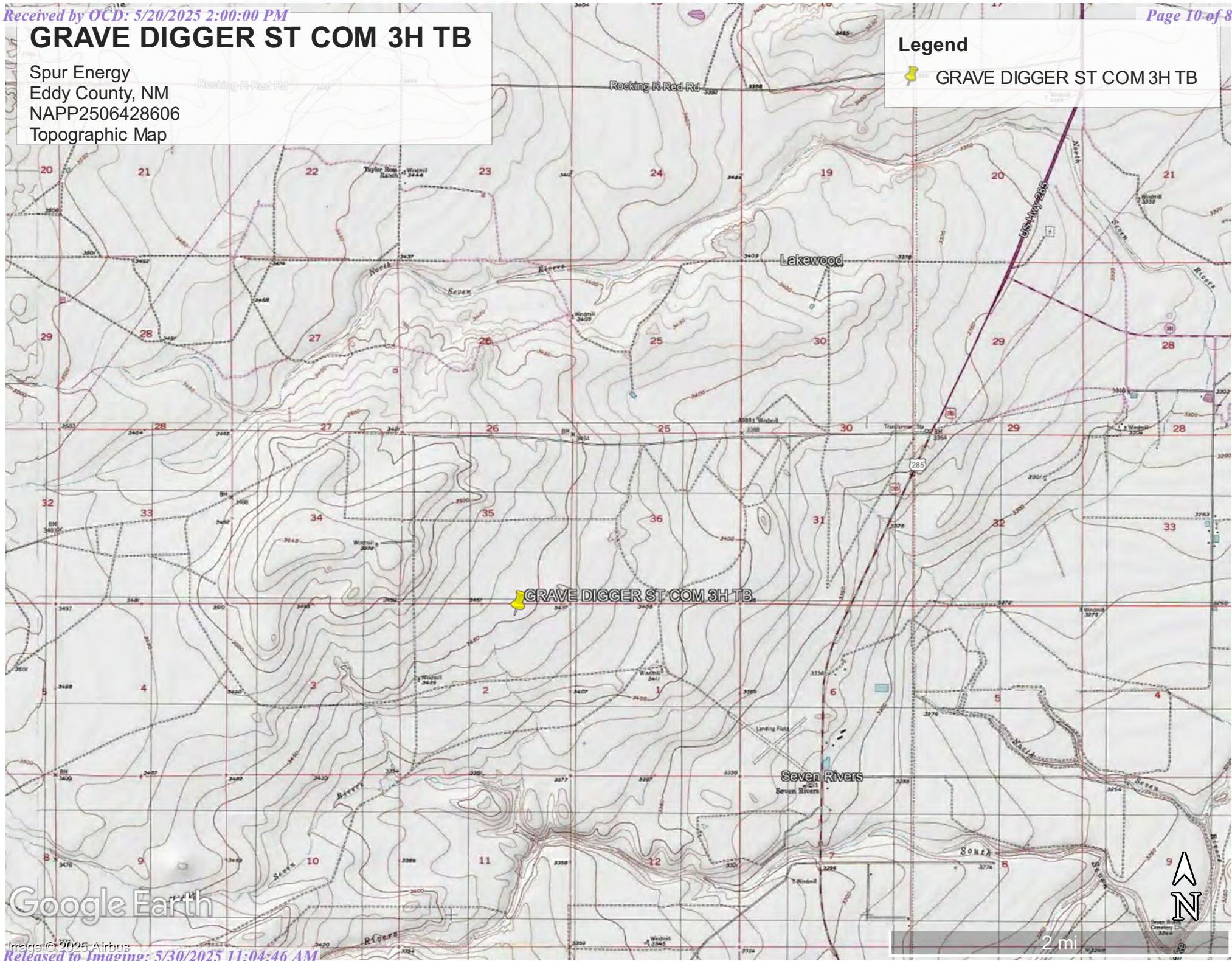
GRAVE DIGGER ST COM 3H TB

Spur Energy
Eddy County, NM
NAPP2506428606
Topographic Map

Legend



GRAVE DIGGER ST COM 3H TB



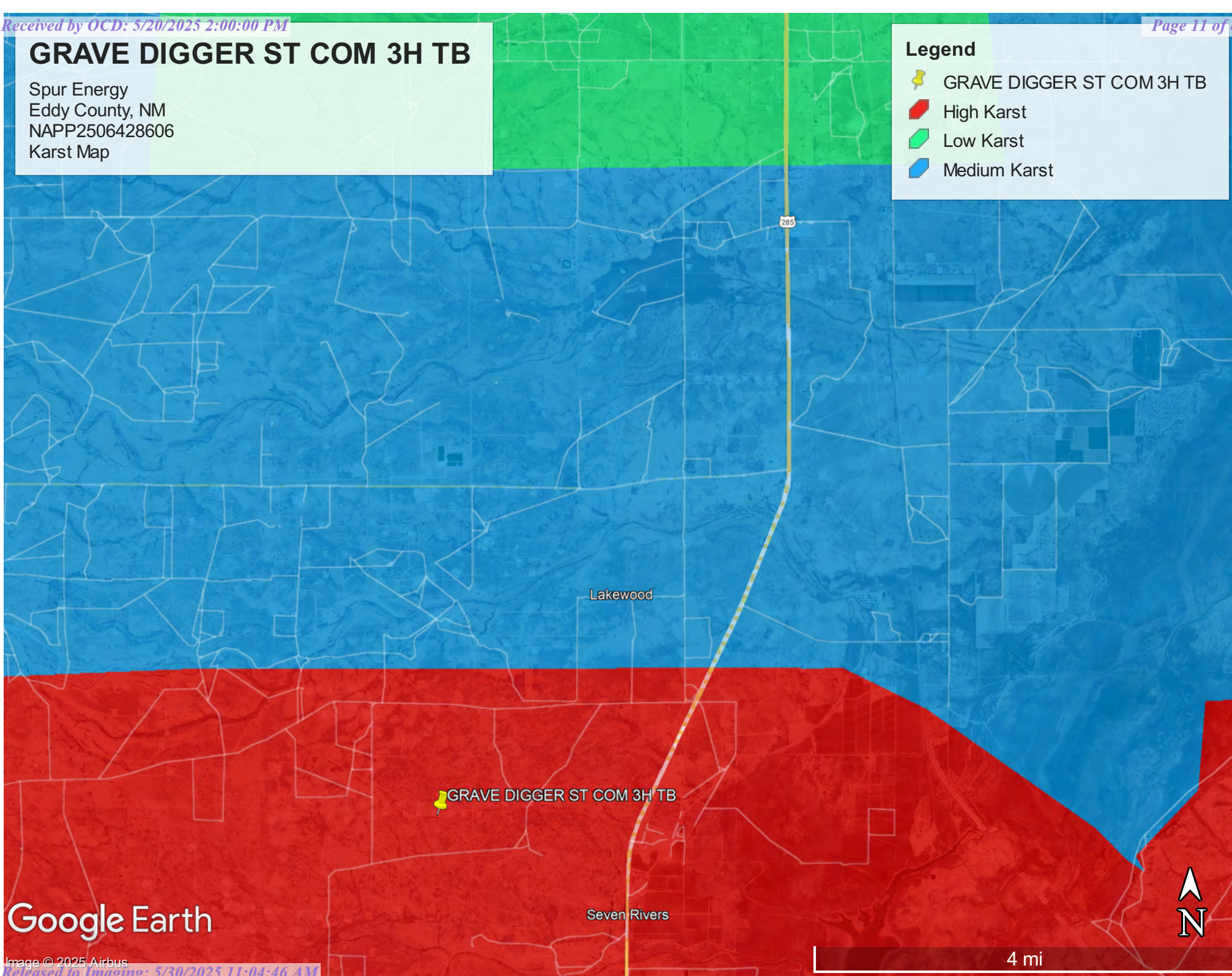
Google Earth

GRAVE DIGGER ST COM 3H TB

Spur Energy
Eddy County, NM
NAPP2506428606
Karst Map

Legend






-  GRAVE DIGGER ST COM 3H TB
-  High Karst
-  Low Karst
-  Medium Karst



GRAVE DIGGER ST COM 3H TB

Spur Energy
Eddy County, NM
NAPP2506428606
Delineation Sample Map

Legend

-  Grave Digger St Com 3H Battery
-  Initial Horizontal Delineation Sample
-  Initial Vertical Delineation Sample
-  Liner Inspection Area
-  Overspray Area

Grave Digger St Com 3H Battery



H1

V1

V2

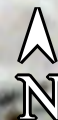
H2

V3

Google Earth

Released to Imaging: 5/30/2025 11:04:46 AM

Image © 2025 Airbus



100 ft

GRAVE DIGGER ST COM 3H TB

Spur Energy
Eddy County, NM
NAPP2506428606
Confirmation Sample Map

Legend

- 0.5' Excavation
- Confirmation Bottom Sample
- Confirmation Side Wall Sample





Appendix A


Water Surveys:

- OSE
- USGS
- Surface Water Map

Point of Diversion Summary

quarters are 1=NW 2=NE 3=SW 4=SE
quarters are smallest to largest

NAD83 UTM in meters

Well Tag	POD Nbr	Q64	Q16	Q4	Sec	Tws	Rng	X	Y	Map
	RA 03018	SW	NE	SE	34	19S	25E	549987.0	3608639.0 *	

* UTM location was derived from PLSS - see Help

Driller License:

46

Driller Company:

ABBOTT BROTHERS COMPANY

Driller Name:

ABBOTT BROS.

Drill Start Date:

Drill Finish Date:

Plug Date:

Log File Date:

1953-08-26

PCW Rcv Date:

Source:

Shallow

Pump Type:

Pipe Discharge Size:

Estimated Yield:

Casing Size:

7.00

Depth Well:

530

Depth Water:

The data is furnished by the NMOSE/ISC and is accepted by the recipient with the expressed understanding that the OSE/ISC make no warranties, expressed or implied, concerning the accuracy, completeness, reliability, usability, or suitability for any particular purpose of the data.

GRAVE DIGGER ST COM 3H TB

Spur Energy
Eddy County, NM
NAPP2506428606
OSE Pod Map

Legend

- 0.93 Miles
- GRAVE DIGGER ST COM 3H TB
- RA 03018

RA 03018

GRAVE DIGGER ST COM 3H TB

Google Earth

Image © 2025 Airbus

Released to Imaging: 5/30/2025 11:04:46 AM

3000 ft





[USGS Home](#)
[Contact USGS](#)
[Search USGS](#)

National Water Information System: Web Interface

USGS Water Resources

Data Category:

Groundwater

Geographic Area:

United States

GO

Click to hide News Bulletins

- Explore the *NEW* [USGS National Water Dashboard](#) interactive map to access real-time water data from over 13,500 stations nationwide.

Groundwater levels for the Nation

 Important: [Next Generation Monitoring Location Page](#)

Search Results -- 1 sites found

site_no list =

- 323611104273601

Minimum number of levels = 1

[Save file of selected sites](#) to local disk for future upload

USGS 323611104273601 20S.25E.02.133244

Available data for this site

Groundwater: Field measurements

GO

Eddy County, New Mexico

Hydrologic Unit Code 13060011

Latitude 32°36'11", Longitude 104°27'36" NAD27

Land-surface elevation 3,438 feet above NAVD88

The depth of the well is 150.0 feet below land surface.

This well is completed in the Roswell Basin aquifer system (S400RSWLBS) national aquifer.

This well is completed in the Rustler Formation (312RSLR) local aquifer.

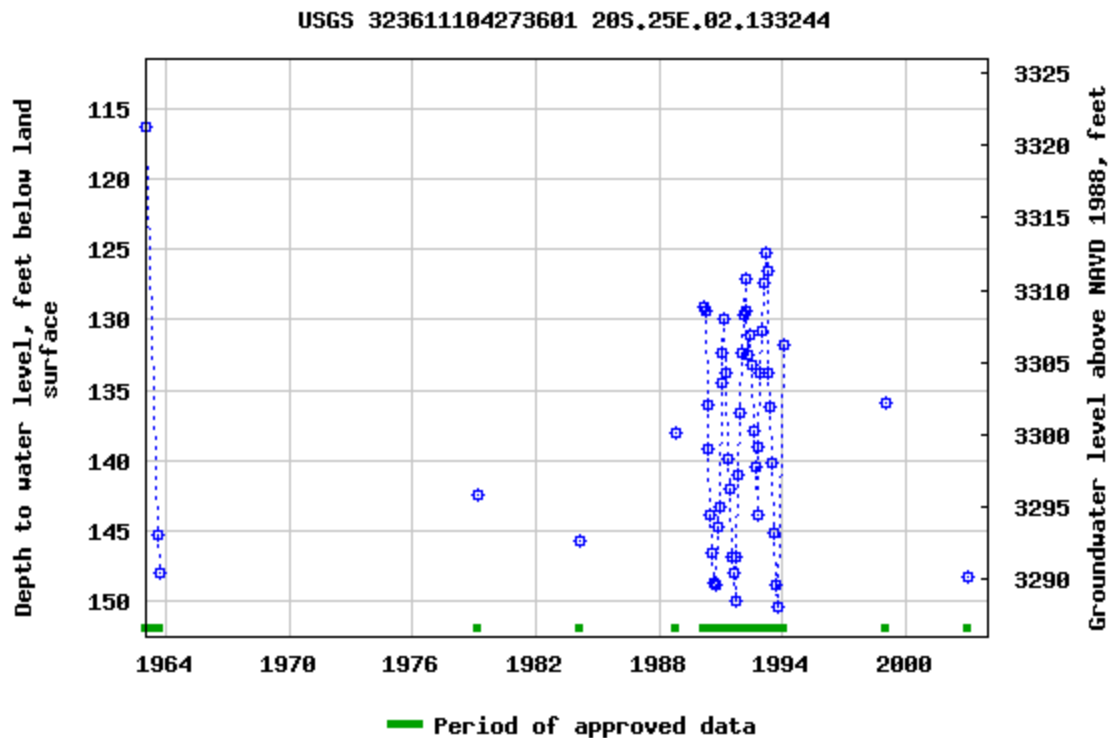
Output formats

[Table of data](#)

[Tab-separated data](#)

[Graph of data](#)

[Reselect period](#)



Breaks in the plot represent a gap of at least one year between field measurements.

[Download a presentation-quality graph](#)

[Questions or Comments](#)

[Help](#)

[Data Tips](#)

[Explanation of terms](#)

[Subscribe for system changes](#)

[Accessibility](#) [FOIA](#) [Privacy](#) [Policies and Notices](#)

[U.S. Department of the Interior](#) | [U.S. Geological Survey](#)

Title: Groundwater for USA: Water Levels

URL: <https://nwis.waterdata.usgs.gov/nwis/gwlevels?>



Page Contact Information: [USGS Water Data Support Team](#)

Page Last Modified: 2025-03-05 11:41:37 EST

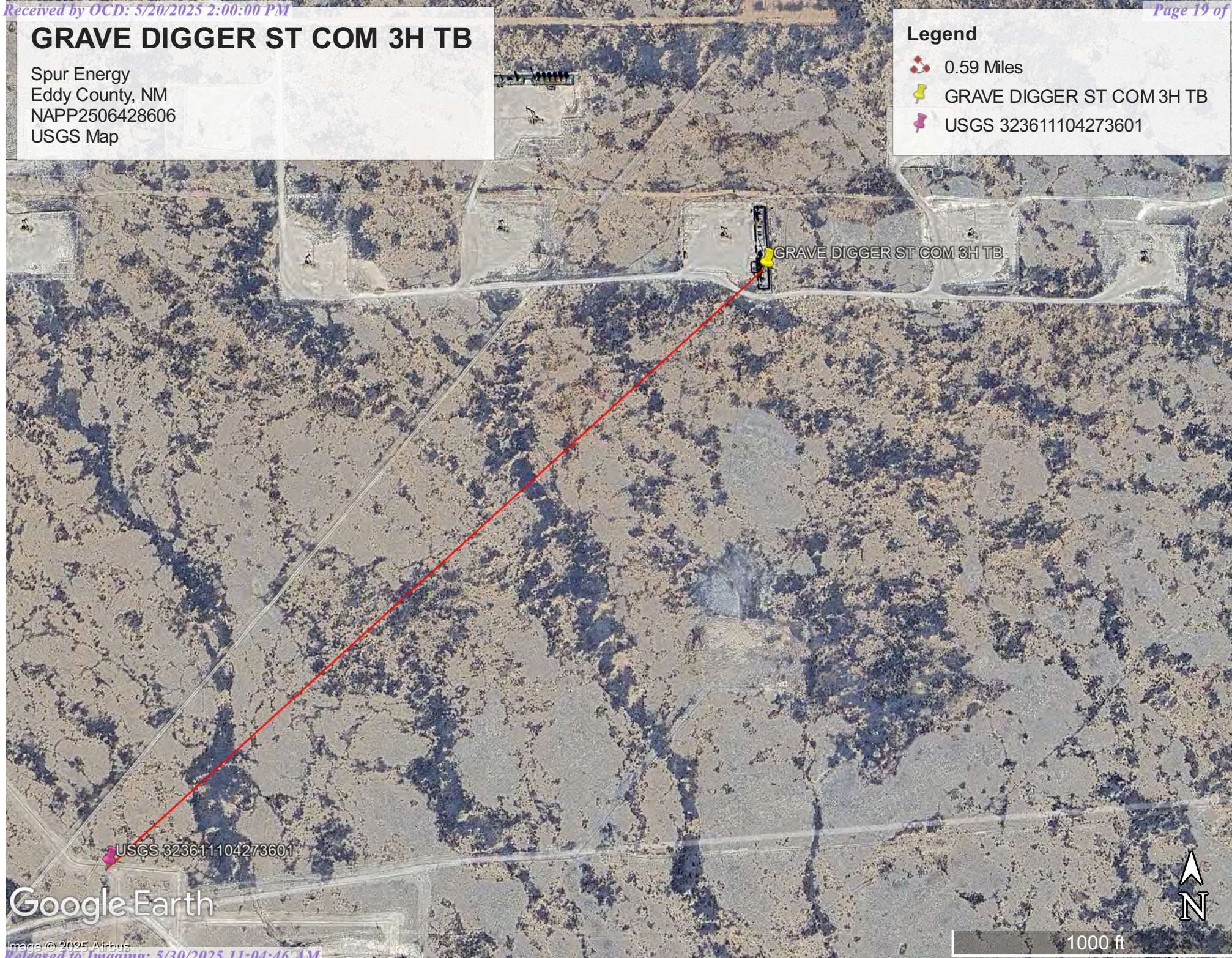
10.83 0.55 nadww02

GRAVE DIGGER ST COM 3H TB

Spur Energy
Eddy County, NM
NAPP2506428606
USGS Map

Legend

- 0.59 Miles
- GRAVE DIGGER ST COM 3H TB
- USGS 323611104273601






Google Earth

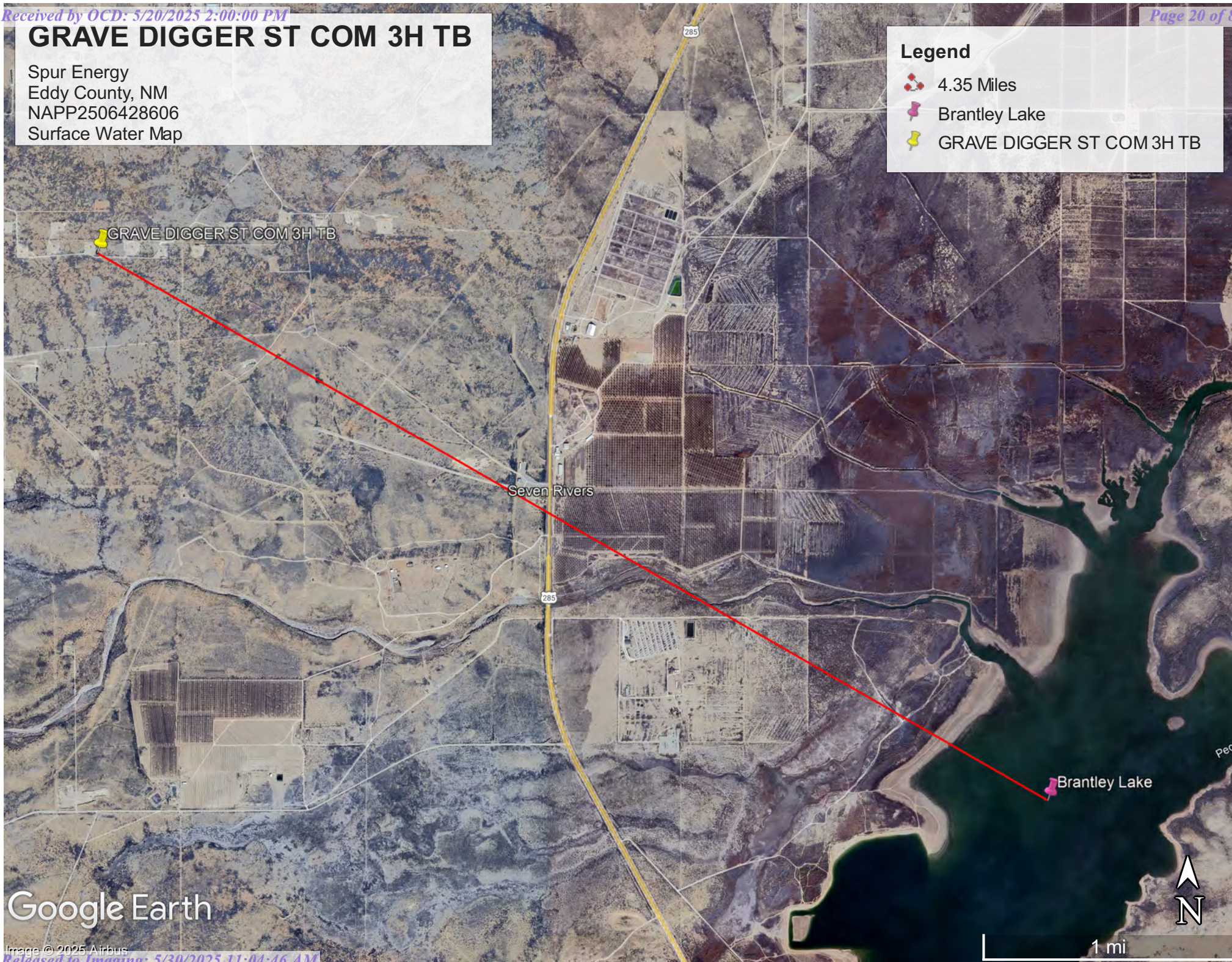
Image © 2025 Airbus

GRAVE DIGGER ST COM 3H TB

Spur Energy
Eddy County, NM
NAPP2506428606
Surface Water Map

Legend

-  4.35 Miles
-  Brantley Lake
-  GRAVE DIGGER ST COM 3H TB



Google Earth

Image © 2025 Airbus

Appendix B

- Soil Survey & Soil Maps
- Geological Data
- FEMA Flood Map
- Wetlands Map

Map Unit Description: Reeves-Gypsum land complex, 0 to 3 percent slopes---Eddy Area, New Mexico

Eddy Area, New Mexico

RG—Reeves-Gypsum land complex, 0 to 3 percent slopes

Map Unit Setting

National map unit symbol: 1w5f

Elevation: 1,250 to 5,000 feet

Mean annual precipitation: 10 to 25 inches

Mean annual air temperature: 57 to 70 degrees F

Frost-free period: 190 to 235 days

Farmland classification: Not prime farmland

Map Unit Composition

Reeves and similar soils: 55 percent

Gypsum land: 30 percent

Minor components: 15 percent

Estimates are based on observations, descriptions, and transects of the mapunit.

Description of Reeves

Setting

Landform: Ridges, plains, hills

Landform position (two-dimensional): Shoulder, backslope, footslope, toeslope

Landform position (three-dimensional): Side slope, head slope, nose slope, crest

Down-slope shape: Convex

Across-slope shape: Linear

Parent material: Residuum weathered from gypsum

Typical profile

H1 - 0 to 8 inches: loam

H2 - 8 to 32 inches: clay loam

H3 - 32 to 60 inches: gypsiferous material

Properties and qualities

Slope: 0 to 1 percent

Depth to restrictive feature: More than 80 inches

Drainage class: Well drained

Runoff class: High

Capacity of the most limiting layer to transmit water (Ksat): Very low to moderately low (0.00 to 0.06 in/hr)

Depth to water table: More than 80 inches

Frequency of flooding: None

Frequency of ponding: None

Calcium carbonate, maximum content: 25 percent

Gypsum, maximum content: 80 percent

Maximum salinity: Very slightly saline to moderately saline (2.0 to 8.0 mmhos/cm)

Sodium adsorption ratio, maximum: 4.0

Available water supply, 0 to 60 inches: Low (about 4.3 inches)

Map Unit Description: Reeves-Gypsum land complex, 0 to 3 percent slopes---Eddy Area, New Mexico

Interpretive groups

Land capability classification (irrigated): 3s

Land capability classification (nonirrigated): 7s

Hydrologic Soil Group: B

Ecological site: R070BC007NM - Loamy

Hydric soil rating: No

Description of Gypsum Land**Setting**

Landform: Ridges, plains, hills

Landform position (two-dimensional): Shoulder, backslope, footslope, toeslope

Landform position (three-dimensional): Side slope, head slope, nose slope, crest

Down-slope shape: Convex

Across-slope shape: Linear

Parent material: Residuum weathered from gypsum

Interpretive groups

Land capability classification (irrigated): None specified

Land capability classification (nonirrigated): 8s

Hydric soil rating: No

Minor Components**Largo**

Percent of map unit: 5 percent

Ecological site: R070BC007NM - Loamy

Hydric soil rating: No

Reagan

Percent of map unit: 5 percent

Ecological site: R070BC007NM - Loamy

Hydric soil rating: No

Cottonwood

Percent of map unit: 5 percent

Ecological site: R070BC033NM - Salty Bottomland

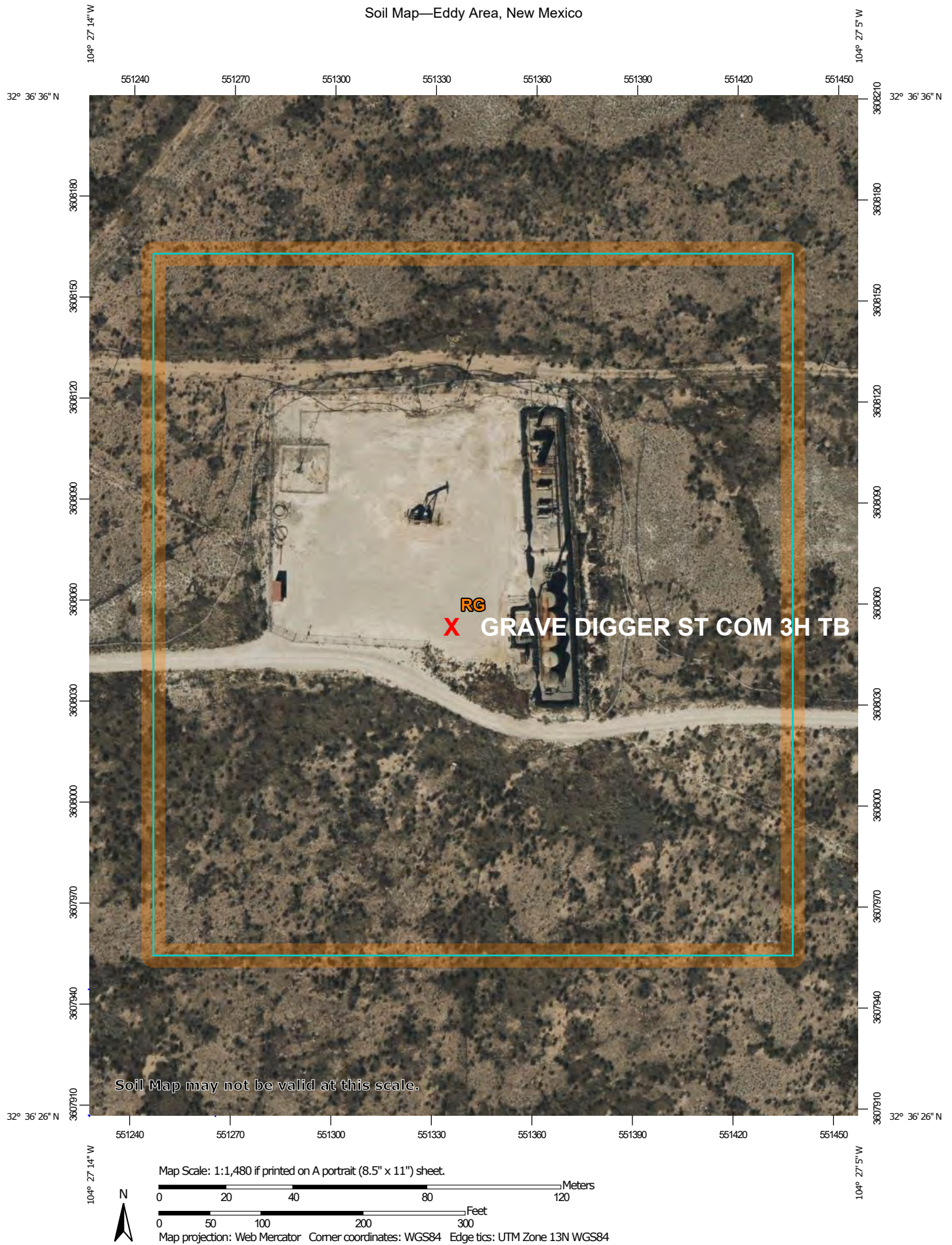
Hydric soil rating: No

Data Source Information

Soil Survey Area: Eddy Area, New Mexico

Survey Area Data: Version 20, Sep 3, 2024

Soil Map—Eddy Area, New Mexico



Natural Resources
Conservation Service

Web Soil Survey
National Cooperative Soil Survey

3/5/2025
Page 1 of 3

Soil Map—Eddy Area, New Mexico

MAP LEGEND

Area of Interest (AOI)

 Area of Interest (AOI)

Soils

 Soil Map Unit Polygons

 Soil Map Unit Lines

 Soil Map Unit Points

Special Point Features



Blowout



Borrow Pit



Clay Spot



Closed Depression



Gravel Pit



Gravelly Spot



Landfill



Lava Flow



Marsh or swamp



Mine or Quarry



Miscellaneous Water



Perennial Water



Rock Outcrop



Saline Spot



Sandy Spot



Severely Eroded Spot



Sinkhole



Slide or Slip



Sodic Spot



Spoil Area



Stony Spot



Very Stony Spot



Wet Spot



Other



Special Line Features

Water Features



Streams and Canals

Transportation



Rails



Interstate Highways



US Routes



Major Roads



Local Roads

Background



Aerial Photography

MAP INFORMATION

The soil surveys that comprise your AOI were mapped at 1:20,000.

Warning: Soil Map may not be valid at this scale.

Enlargement of maps beyond the scale of mapping can cause misunderstanding of the detail of mapping and accuracy of soil line placement. The maps do not show the small areas of contrasting soils that could have been shown at a more detailed scale.

Please rely on the bar scale on each map sheet for map measurements.

Source of Map: Natural Resources Conservation Service

Web Soil Survey URL:

Coordinate System: Web Mercator (EPSG:3857)

Maps from the Web Soil Survey are based on the Web Mercator projection, which preserves direction and shape but distorts distance and area. A projection that preserves area, such as the Albers equal-area conic projection, should be used if more accurate calculations of distance or area are required.

This product is generated from the USDA-NRCS certified data as of the version date(s) listed below.

Soil Survey Area: Eddy Area, New Mexico

Survey Area Data: Version 20, Sep 3, 2024

Soil map units are labeled (as space allows) for map scales 1:50,000 or larger.

Date(s) aerial images were photographed: Nov 12, 2022—Dec 2, 2022

The orthophoto or other base map on which the soil lines were compiled and digitized probably differs from the background imagery displayed on these maps. As a result, some minor shifting of map unit boundaries may be evident.

Map Unit Legend

Map Unit Symbol	Map Unit Name	Acres in AOI	Percent of AOI
RG	Reeves-Gypsum land complex, 0 to 3 percent slopes	9.9	100.0%
Totals for Area of Interest		9.9	100.0%

(<https://www.usgs.gov/>)

Mineral Resources (<https://www.usgs.gov/energy-and-minerals/mineral-resources-program>)

/ Online Spatial Data (/) / Geology (/geology/) / by state (/geology/state/)

/ New Mexico (/geology/state/state.php?state=NM)

Piedmont alluvial deposits

XML (/geology/state/xml/NMQp;0) JSON (/geology/state/json/NMQp;0)

Shapefile (/geology/state/unit-shape.php?unit=NMQp;0)

Includes deposits of higher gradient tributaries bordering major stream valleys, alluvial veneers of the piedmont slope, and alluvial fans. May locally include uppermost Pliocene deposits.

State	New Mexico (/geology/state/state.php?state=NM)
Name	Piedmont alluvial deposits
Geologic age	Holocene to lower Pleistocene
Lithologic constituents	Major Unconsolidated (Alluvial) <i>Includes deposits of higher gradient tributaries bordering major stream valleys, alluvial veneers of the piedmont slope, and alluvial fans</i>
References	Green, G.N., Jones, G.E., and Anderson, O.J., 1997, The Digital Geologic Map of New Mexico in ARC/INFO Format: U.S. Geological Survey Open-File Report 97-0052, 9 p., scale 1:500,000. https://pubs.er.usgs.gov/publication/ofr9752 (https://pubs.er.usgs.gov/publication/ofr9752)
NGMDB product	NGMDB product page for 59219 (https://ngmdb.usgs.gov/Prodesc/proddesc_59219.htm) NGMDB product page for 22974 (https://ngmdb.usgs.gov/Prodesc/proddesc_22974.htm)

Counties

Bernalillo (/geology/state/fips-unit.php?code=f35001) - Catron (/geology/state/fips-unit.php?code=f35003) - Chaves (/geology/state/fips-unit.php?code=f35005) - Colfax (/geology/state/fips-unit.php?code=f35007) - DeBaca (/geology/state/fips-unit.php?code=f35011) - Dona Ana (/geology/state/fips-unit.php?code=f35013) - Eddy (/geology/state/fips-unit.php?code=f35015) - Grant (/geology/state/fips-unit.php?code=f35017) - Guadalupe (/geology/state/fips-unit.php?code=f35019) - Hidalgo (/geology/state/fips-unit.php?code=f35023) - Lea (/geology/state/fips-unit.php?code=f35025) - Lincoln (/geology/state/fips-unit.php?code=f35027) - Los Alamos (/geology/state/fips-unit.php?code=f35028) - Luna (/geology/state/fips-unit.php?code=f35029) - Mora (/geology/state/fips-unit.php?code=f35033) - Otero (/geology/state/fips-unit.php?code=f35035) - Quay (/geology/state/fips-unit.php?code=f35037) - Rio Arriba (/geology/state/fips-unit.php?code=f35039) - Roosevelt (/geology/state/fips-unit.php?code=f35041) - Sandoval (/geology/state/fips-unit.php?code=f35043) - San Miguel (/geology/state/fips-unit.php?code=f35047) - Santa Fe (/geology/state/fips-unit.php?code=f35049) - Sierra (/geology/state/fips-unit.php?code=f35051) - Socorro (/geology/state/fips-unit.php?code=f35053) - Taos (/geology/state/fips-unit.php?code=f35055) - Torrance (/geology/state/fips-unit.php?code=f35057) - Valencia (/geology/state/fips-unit.php?code=f35061)

DOI Privacy Policy (<https://www.doi.gov/privacy>) | Legal (https://www.usgs.gov/laws/policies_notices.html) |

Accessibility (<https://www2.usgs.gov/laws/accessibility.html>) | Site Map (<https://www.usgs.gov/sitemap.html>) |

Contact USGS (<https://answers.usgs.gov/>)

U.S. Department of the Interior (<https://www.doi.gov/>) | DOI Inspector General (<https://www.doi.gov/ig/>) |

White House (<https://www.whitehouse.gov/>) | E-gov (<https://www.whitehouse.gov/omb/management/egov/>) |

No Fear Act (<https://www.doi.gov/pmb/eeo/no-fear-act>) | FOIA (<https://www2.usgs.gov/foia>)

GRAVE DIGGER ST COM 3H TB

Spur Energy
Eddy County, NM
NAPP2506428606
Geological Map

Legend

- Artesia Group
- GRAVE DIGGER ST COM 3H TB
- Piedmont alluvial deposits

Rocking R Red Rd

Rocking R Red Rd

Lakewood

US Hwy 285

285

GRAVE DIGGER ST COM 3H TB

Google Earth

Image © 2025 Airbus



2 mi

National Flood Hazard Layer FIRMette



104°27'28"W 32°36'47"N



0 250 500 1,000 1,500 2,000 Feet

1:6,000

104°26'50"W 32°36'17"N

Released to Imaging: 5/30/2025 11:04:46 AM

Basemap Imagery Source: USGS National Map 2023

Legend

SEE FIS REPORT FOR DETAILED LEGEND AND INDEX MAP FOR FIRM PANEL LAYOUT

SPECIAL FLOOD HAZARD AREAS		Without Base Flood Elevation (BFE) Zone A, V, A99
		With BFE or Depth Zone AE, AO, AH, VE, AR
		Regulatory Floodway
OTHER AREAS OF FLOOD HAZARD		0.2% Annual Chance Flood Hazard, Areas of 1% annual chance flood with average depth less than one foot or with drainage areas of less than one square mile Zone X
		Future Conditions 1% Annual Chance Flood Hazard Zone X
		Area with Reduced Flood Risk due to Levee. See Notes. Zone X
		Area with Flood Risk due to Levee Zone D
OTHER AREAS		NO SCREEN Area of Minimal Flood Hazard Zone X
		Effective LOMRs
		Area of Undetermined Flood Hazard Zone D
GENERAL STRUCTURES		Channel, Culvert, or Storm Sewer
		Levee, Dike, or Floodwall
OTHER FEATURES		20.2 Cross Sections with 1% Annual Chance Water Surface Elevation
		17.5
		Coastal Transect
		Base Flood Elevation Line (BFE)
		Limit of Study
		Jurisdiction Boundary
		Coastal Transect Baseline
		Profile Baseline
MAP PANELS		Digital Data Available
		No Digital Data Available
		Unmapped

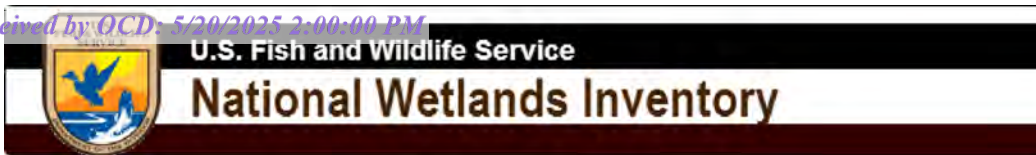


The pin displayed on the map is an approximate point selected by the user and does not represent an authoritative property location.

This map complies with FEMA's standards for the use of digital flood maps if it is not void as described below. The basemap shown complies with FEMA's basemap accuracy standards

The flood hazard information is derived directly from the authoritative NFHL web services provided by FEMA. This map was exported on 3/5/2025 at 4:14 PM and does not reflect changes or amendments subsequent to this date and time. The NFHL and effective information may change or become superseded by new data over time.

This map image is void if the one or more of the following map elements do not appear: basemap imagery, flood zone labels, legend, scale bar, map creation date, community identifiers, FIRM panel number, and FIRM effective date. Map images for unmapped and unmodernized areas cannot be used for regulatory purposes.



Wetlands Map



March 5, 2025

Wetlands

- Estuarine and Marine Deepwater
- Estuarine and Marine Wetland

- Freshwater Emergent Wetland
- Freshwater Forested/Shrub Wetland
- Freshwater Pond

- Lake
- Other
- Riverine

This map is for general reference only. The US Fish and Wildlife Service is not responsible for the accuracy or currentness of the base data shown on this map. All wetlands related data should be used in accordance with the layer metadata found on the Wetlands Mapper web site.



Appendix C

- 48-Hour Notification
- Liner Inspection Form

Sebastian@pimaoil.com

From: OCDOnline@state.nm.us
Sent: Sunday, March 23, 2025 9:04 PM
To: sebastian@pimaoil.com
Subject: The Oil Conservation Division (OCD) has accepted the application, Application ID: 444729

To whom it may concern (c/o Sebastian Orozco for Spur Energy Partners LLC),

The OCD has received the submitted *Notification for Liner Inspection for a Release* (C-141L), for incident ID (n#) nAPP2506428606.

The liner inspection is expected to take place:

When: 03/26/2025 @ 08:00

Where: B-02-20S-25E 0 FNL 0 FEL (32.60878,-104.45253)

Additional Information: Marisa Loya
575-416-0639

Additional Instructions: 32.608907°-104.452921°

An OCD representative may be available onsite at the date and time reported. In the absence or presence of an OCD representative, liner inspection pursuant to 19.15.29.11.A(5)(a) NMAC is required. Should there be a change in the scheduled date and time of the sampling event, then another notification should be resubmitted through OCD permitting as soon as possible.

- **Failure to notify the OCD of liner inspections including any changes in date/time per the requirements of 19.15.29.11.A(5)(a)(ii) NMAC, may result in the inspection not being accepted.**

If you have any questions regarding this application, or don't know why you have received this email, please contact us.

New Mexico Energy, Minerals and Natural Resources Department
1220 South St. Francis Drive
Santa Fe, NM 87505

Sebastian@pimaoil.com

From: OCDOnline@state.nm.us
Sent: Wednesday, March 5, 2025 9:10 PM
To: sebastian@pimaoil.com
Subject: The Oil Conservation Division (OCD) has accepted the application, Application ID: 439533

To whom it may concern (c/o Sebastian Orozco for Spur Energy Partners LLC),

The OCD has received the submitted *Notification for (Final) Sampling of a Release* (C-141N), for incident ID (n#) nAPP2506428606.

The sampling event is expected to take place:

When: 03/11/2025 @ 08:00

Where: B-02-20S-25E 0 FNL 0 FEL (32.60878,-104.45253)

Additional Information: Marisa Loya
575-416-0639

Additional Instructions: 32.608816°-104.452521°

An OCD representative may be available onsite at the date and time reported. In the absence or presence of an OCD representative, sampling pursuant to 19.15.29.12.D NMAC is required. Sampling must be performed following an approved sampling plan or pursuant to 19.15.29.12.D.(1).(c) NMAC. Should there be a change in the scheduled date and time of the sampling event, then another notification should be resubmitted through OCD permitting as soon as possible.

- **Failure to notify the OCD of sampling events including any changes in date/time per the requirements of 19.15.29.12.D.(1).(a) NMAC, may result in the remediation closure samples not being accepted.**

If you have any questions regarding this application, or don't know why you have received this email, please contact us.

New Mexico Energy, Minerals and Natural Resources Department
1220 South St. Francis Drive
Santa Fe, NM 87505



Pima Environmental Services, LLC

Liner Inspection FormCompany Name: Spur EnergySite: GRAVE DIGGER ST COM 3H TBLat/Long: 32.60878,-104.45253

NMOCD Incident ID

& Incident Date: NAPP2506428606 03/2/2025

2-Day Notification

Sent: via OCD portal 03/23/2025Inspection Date: 03/26/2025

Liner Type: Earthen w/liner Earthen no liner Polystar

 Steel w/poly liner Steel w/spray epoxy No Liner

Other: _____

Visualization	Yes	No	Comments
Is there a tear in the liner?		X	
Are there holes in the liner?		X	
Is the liner retaining any fluids?	X		Residual liquid is visible in the photo log from the power washing cleaning event.
Does the liner have integrity to contain a leak?	X		

Comments: _____

Inspector Name: Marisa Loya Inspector Signature: Marisa Loya



Appendix D

○ Photographic Documentation



PHOTOGRAPHIC DOCUMENTATION SITE

NAME: Grave Digger State Com 3H Battery

Gravel Removal :



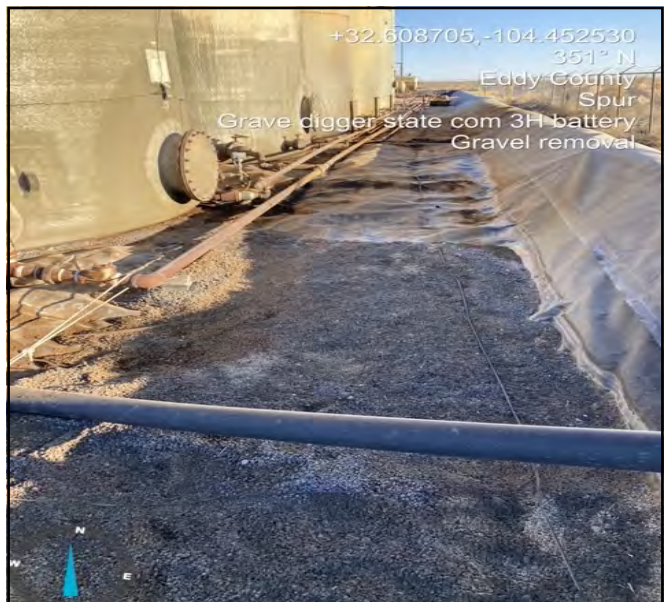
Photograph taken prior to gravel removal, facing west.



Photograph taken prior to gravel removal, facing east.



Photograph taken prior to gravel removal, facing southwest.



Photograph taken prior to gravel removal, facing north.



PHOTOGRAPHIC DOCUMENTATION SITE

NAME: Grave Digger State Com 3H Battery

Pre- Powerwash Photos:

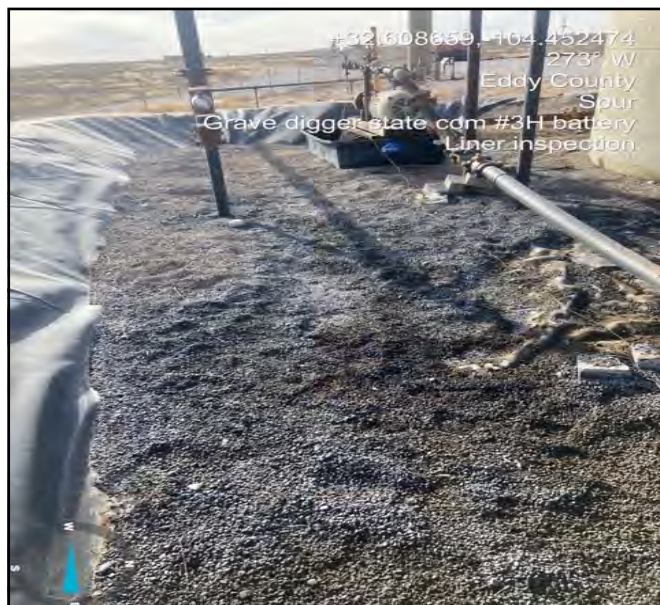


Photo of liner taken prior to power washing.
Facing west.



Photo of liner taken prior to power washing.
Facing north.



Photo of liner taken prior to power washing.
Facing east.



Photo of liner taken prior to power washing.
Facing south.



PHOTOGRAPHIC DOCUMENTATION SITE

NAME: Grave Digger State Com 3H Battery

Liner Inspection :



Photo taken pursuant to power washing. Facing west.



Photo taken pursuant to power washing. Facing northwest.



Photo taken pursuant to power washing. Facing southwest.



Photo taken pursuant to power washing. Facing west.



Photo taken pursuant to power washing.
Facing south.

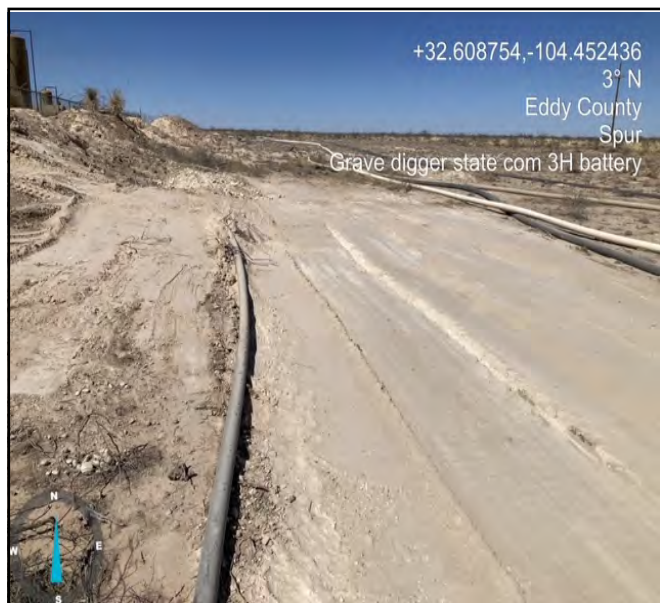


Photo taken pursuant to power washing.
Facing east.

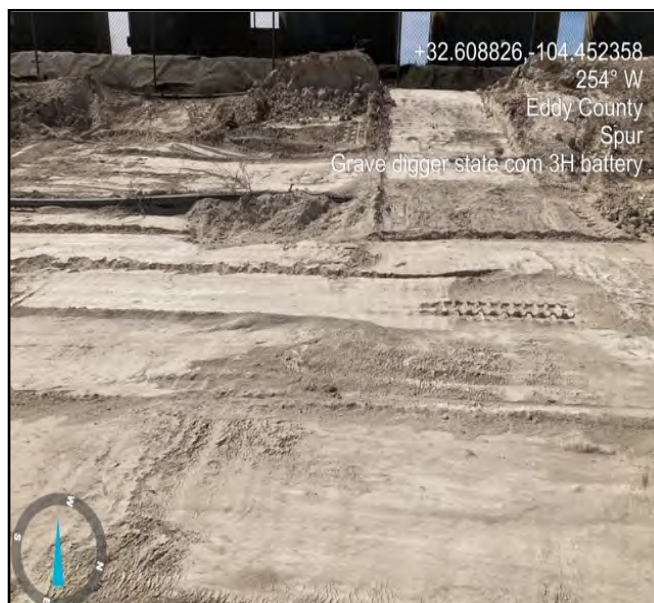
PHOTOGRAPHIC DOCUMENTATION SITE

NAME: Grave Digger State Com 3H Battery

Excavation and Backfill :



Photograph taken during excavation facing north.



Photograph taken post excavation/ backfill, facing west.

Appendix E

○ Laboratory Reports



PHONE (575) 393-2326 ° 101 E. MARLAND ° HOBBS, NM 88240

March 18, 2025

SEBASTIAN OROZCO

PIMA ENVIROMENTAL

1601 N TURNER STE. 500

HOBBS, NM 88240

RE: GRAVE DIGGER ST. COM 3H TB

Enclosed are the results of analyses for samples received by the laboratory on 03/12/25 16:59.

Cardinal Laboratories is accredited through Texas NELAP under certificate number TX-C24-00112. Accreditation applies to drinking water, non-potable water and solid and chemical materials. All accredited analytes are denoted by an asterisk (*). For a complete list of accredited analytes and matrices visit the TCEQ website at www.tceq.texas.gov/field/qa/lab_accred_certif.html.

Cardinal Laboratories is accredited through the State of Colorado Department of Public Health and Environment for:

Method EPA 552.2	Haloacetic Acids (HAA-5)
Method EPA 524.2	Total Trihalomethanes (TTHM)
Method EPA 524.4	Regulated VOCs (V1, V2, V3)

Accreditation applies to public drinking water matrices.

This report meets NELAP requirements and is made up of a cover page, analytical results, and a copy of the original chain-of-custody. If you have any questions concerning this report, please feel free to contact me.

Sincerely,

Celey D. Keene

Lab Director/Quality Manager



PHONE (575) 393-2326 ° 101 E. MARLAND ° HOBBS, NM 88240

Analytical Results For:

PIMA ENVIROMENTAL
 SEBASTIAN OROZCO
 1601 N TURNER STE. 500
 HOBBS NM, 88240
 Fax To:

Received: 03/12/2025
 Reported: 03/18/2025
 Project Name: GRAVE DIGGER ST. COM 3H TB
 Project Number: 6-384
 Project Location: SPUR ENERGY - EDDY CO NM

Sampling Date: 03/11/2025
 Sampling Type: Soil
 Sampling Condition: Cool & Intact
 Sample Received By: Shalyn Rodriguez

Sample ID: V 1 - SURFACE (H251483-01)

BTX 8021B		mg/kg		Analyzed By: JH					
Analyte	Result	Reporting Limit	Analyzed	Method Blank	BS	% Recovery	True Value QC	RPD	Qualifier
Benzene*	<0.050	0.050	03/13/2025	ND	2.22	111	2.00	2.31	
Toluene*	<0.050	0.050	03/13/2025	ND	2.30	115	2.00	4.25	
Ethylbenzene*	<0.050	0.050	03/13/2025	ND	2.44	122	2.00	4.34	
Total Xylenes*	<0.150	0.150	03/13/2025	ND	7.48	125	6.00	4.26	
Total BTX	<0.300	0.300	03/13/2025	ND					

Surrogate: 4-Bromofluorobenzene (PID) 128 % 71.5-134

Chloride, SM4500Cl-B		mg/kg		Analyzed By: AC						
Analyte	Result	Reporting Limit	Analyzed	Method Blank	BS	% Recovery	True Value QC	RPD	Qualifier	
Chloride	1840	16.0	03/13/2025	ND	400	100	400	3.92		

TPH 8015M		mg/kg		Analyzed By: MS					
Analyte	Result	Reporting Limit	Analyzed	Method Blank	BS	% Recovery	True Value QC	RPD	Qualifier
GRO C6-C10*	<10.0	10.0	03/13/2025	ND	205	103	200	0.814	
DRO >C10-C28*	<10.0	10.0	03/13/2025	ND	202	101	200	10.3	
EXT DRO >C28-C36	<10.0	10.0	03/13/2025	ND					

Surrogate: 1-Chlorooctane 96.2 % 44.4-145

Surrogate: 1-Chlorooctadecane 89.8 % 40.6-153

Cardinal Laboratories

*=Accredited Analyte

PLEASE NOTE: Liability and Damages. Cardinal's liability and client's exclusive remedy for any claim arising, whether based in contract or tort, shall be limited to the amount paid by client for analyses. All claims, including those for negligence and any other cause whatsoever shall be deemed waived unless made in writing and received by Cardinal within thirty (30) days after completion of the applicable service. In no event shall Cardinal be liable for incidental or consequential damages, including, without limitation, business interruptions, loss of use, or loss of profits incurred by client, its subsidiaries, affiliates or successors arising out of or related to the performance of the services hereunder by Cardinal, regardless of whether such claim is based upon any of the above stated reasons or otherwise. Results relate only to the samples identified above. This report shall not be reproduced except in full with written approval of Cardinal Laboratories.

Celey D. Keene, Lab Director/Quality Manager



PHONE (575) 393-2326 ° 101 E. MARLAND ° HOBBS, NM 88240

Analytical Results For:

PIMA ENVIROMENTAL
 SEBASTIAN OROZCO
 1601 N TURNER STE. 500
 HOBBS NM, 88240
 Fax To:

Received: 03/12/2025
 Reported: 03/18/2025
 Project Name: GRAVE DIGGER ST. COM 3H TB
 Project Number: 6-384
 Project Location: SPUR ENERGY - EDDY CO NM

Sampling Date: 03/11/2025
 Sampling Type: Soil
 Sampling Condition: Cool & Intact
 Sample Received By: Shalyn Rodriguez

Sample ID: V 1 - 2' (H251483-02)

BTEx 8021B		mg/kg		Analyzed By: JH					
Analyte	Result	Reporting Limit	Analyzed	Method Blank	BS	% Recovery	True Value QC	RPD	Qualifier
Benzene*	<0.050	0.050	03/13/2025	ND	2.22	111	2.00	2.31	
Toluene*	<0.050	0.050	03/13/2025	ND	2.30	115	2.00	4.25	
Ethylbenzene*	<0.050	0.050	03/13/2025	ND	2.44	122	2.00	4.34	
Total Xylenes*	<0.150	0.150	03/13/2025	ND	7.48	125	6.00	4.26	
Total BTEX	<0.300	0.300	03/13/2025	ND					

Surrogate: 4-Bromofluorobenzene (PID) 122 % 71.5-134

Chloride, SM4500Cl-B		mg/kg		Analyzed By: AC					
Analyte	Result	Reporting Limit	Analyzed	Method Blank	BS	% Recovery	True Value QC	RPD	Qualifier
Chloride	432	16.0	03/13/2025	ND	400	100	400	3.92	

TPH 8015M		mg/kg		Analyzed By: MS					
Analyte	Result	Reporting Limit	Analyzed	Method Blank	BS	% Recovery	True Value QC	RPD	Qualifier
GRO C6-C10*	<10.0	10.0	03/13/2025	ND	205	103	200	0.814	
DRO >C10-C28*	<10.0	10.0	03/13/2025	ND	202	101	200	10.3	
EXT DRO >C28-C36	<10.0	10.0	03/13/2025	ND					

Surrogate: 1-Chlorooctane 93.9 % 44.4-145

Surrogate: 1-Chlorooctadecane 86.7 % 40.6-153

Cardinal Laboratories

*=Accredited Analyte

PLEASE NOTE: Liability and Damages. Cardinal's liability and client's exclusive remedy for any claim arising, whether based in contract or tort, shall be limited to the amount paid by client for analyses. All claims, including those for negligence and any other cause whatsoever shall be deemed waived unless made in writing and received by Cardinal within thirty (30) days after completion of the applicable service. In no event shall Cardinal be liable for incidental or consequential damages, including, without limitation, business interruptions, loss of use, or loss of profits incurred by client, its subsidiaries, affiliates or successors arising out of or related to the performance of the services hereunder by Cardinal, regardless of whether such claim is based upon any of the above stated reasons or otherwise. Results relate only to the samples identified above. This report shall not be reproduced except in full with written approval of Cardinal Laboratories.

Celey D. Keene, Lab Director/Quality Manager



PHONE (575) 393-2326 ° 101 E. MARLAND ° HOBBS, NM 88240

Analytical Results For:

PIMA ENVIROMENTAL
SEBASTIAN OROZCO
1601 N TURNER STE. 500
HOBBS NM, 88240
Fax To:

Received: 03/12/2025
Reported: 03/18/2025
Project Name: GRAVE DIGGER ST. COM 3H TB
Project Number: 6-384
Project Location: SPUR ENERGY - EDDY CO NM

Sampling Date: 03/11/2025
Sampling Type: Soil
Sampling Condition: Cool & Intact
Sample Received By: Shalyn Rodriguez

Sample ID: V 1 - 4' (H251483-03)

BTEx 8021B		mg/kg		Analyzed By: JH						
Analyte	Result	Reporting Limit	Analyzed	Method Blank	BS	% Recovery	True Value QC	RPD	Qualifier	
Benzene*	<0.050	0.050	03/13/2025	ND	2.22	111	2.00	2.31		
Toluene*	<0.050	0.050	03/13/2025	ND	2.30	115	2.00	4.25		
Ethylbenzene*	<0.050	0.050	03/13/2025	ND	2.44	122	2.00	4.34		
Total Xylenes*	<0.150	0.150	03/13/2025	ND	7.48	125	6.00	4.26		
Total BTEx	<0.300	0.300	03/13/2025	ND						

Surrogate: 4-Bromofluorobenzene (PID) 129 % 71.5-134

Chloride, SM4500Cl-B		mg/kg		Analyzed By: AC					
Analyte	Result	Reporting Limit	Analyzed	Method Blank	BS	% Recovery	True Value QC	RPD	Qualifier
Chloride	32.0	16.0	03/13/2025	ND	400	100	400	3.92	

TPH 8015M		mg/kg		Analyzed By: MS					
Analyte	Result	Reporting Limit	Analyzed	Method Blank	BS	% Recovery	True Value QC	RPD	Qualifier
GRO C6-C10*	<10.0	10.0	03/13/2025	ND	205	103	200	0.814	
DRO >C10-C28*	<10.0	10.0	03/13/2025	ND	202	101	200	10.3	
EXT DRO >C28-C36	<10.0	10.0	03/13/2025	ND					

Surrogate: 1-Chlorooctane 96.2 % 44.4-145

Surrogate: 1-Chlorooctadecane 88.6 % 40.6-153

Cardinal Laboratories

*=Accredited Analyte

PLEASE NOTE: Liability and Damages. Cardinal's liability and client's exclusive remedy for any claim arising, whether based in contract or tort, shall be limited to the amount paid by client for analyses. All claims, including those for negligence and any other cause whatsoever shall be deemed waived unless made in writing and received by Cardinal within thirty (30) days after completion of the applicable service. In no event shall Cardinal be liable for incidental or consequential damages, including, without limitation, business interruptions, loss of use, or loss of profits incurred by client, its subsidiaries, affiliates or successors arising out of or related to the performance of the services hereunder by Cardinal, regardless of whether such claim is based upon any of the above stated reasons or otherwise. Results relate only to the samples identified above. This report shall not be reproduced except in full with written approval of Cardinal Laboratories.

Celey D. Keene, Lab Director/Quality Manager



PHONE (575) 393-2326 ° 101 E. MARLAND ° HOBBS, NM 88240

Analytical Results For:

PIMA ENVIROMENTAL
 SEBASTIAN OROZCO
 1601 N TURNER STE. 500
 HOBBS NM, 88240
 Fax To:

Received: 03/12/2025
 Reported: 03/18/2025
 Project Name: GRAVE DIGGER ST. COM 3H TB
 Project Number: 6-384
 Project Location: SPUR ENERGY - EDDY CO NM

Sampling Date: 03/11/2025
 Sampling Type: Soil
 Sampling Condition: Cool & Intact
 Sample Received By: Shalyn Rodriguez

Sample ID: V 2 - SURFACE (H251483-04)

BTX 8021B		mg/kg		Analyzed By: JH						
Analyte	Result	Reporting Limit	Analyzed	Method Blank	BS	% Recovery	True Value QC	RPD	Qualifier	
Benzene*	<0.050	0.050	03/13/2025	ND	2.22	111	2.00	2.31		
Toluene*	<0.050	0.050	03/13/2025	ND	2.30	115	2.00	4.25		
Ethylbenzene*	<0.050	0.050	03/13/2025	ND	2.44	122	2.00	4.34		
Total Xylenes*	<0.150	0.150	03/13/2025	ND	7.48	125	6.00	4.26		
Total BTX	<0.300	0.300	03/13/2025	ND						

Surrogate: 4-Bromofluorobenzene (PID) 127 % 71.5-134

Chloride, SM4500CI-B		mg/kg		Analyzed By: AC						
Analyte	Result	Reporting Limit	Analyzed	Method Blank	BS	% Recovery	True Value QC	RPD	Qualifier	
Chloride	2440	16.0	03/13/2025	ND	400	100	400	3.92		

TPH 8015M		mg/kg		Analyzed By: MS					
Analyte	Result	Reporting Limit	Analyzed	Method Blank	BS	% Recovery	True Value QC	RPD	Qualifier
GRO C6-C10*	<10.0	10.0	03/13/2025	ND	205	103	200	0.814	
DRO >C10-C28*	<10.0	10.0	03/13/2025	ND	202	101	200	10.3	
EXT DRO >C28-C36	<10.0	10.0	03/13/2025	ND					

Surrogate: 1-Chlorooctane 97.1 % 44.4-145

Surrogate: 1-Chlorooctadecane 90.1 % 40.6-153

Cardinal Laboratories

*=Accredited Analyte

PLEASE NOTE: Liability and Damages. Cardinal's liability and client's exclusive remedy for any claim arising, whether based in contract or tort, shall be limited to the amount paid by client for analyses. All claims, including those for negligence and any other cause whatsoever shall be deemed waived unless made in writing and received by Cardinal within thirty (30) days after completion of the applicable service. In no event shall Cardinal be liable for incidental or consequential damages, including, without limitation, business interruptions, loss of use, or loss of profits incurred by client, its subsidiaries, affiliates or successors arising out of or related to the performance of the services hereunder by Cardinal, regardless of whether such claim is based upon any of the above stated reasons or otherwise. Results relate only to the samples identified above. This report shall not be reproduced except in full with written approval of Cardinal Laboratories.

Celey D. Keene, Lab Director/Quality Manager



PHONE (575) 393-2326 ° 101 E. MARLAND ° HOBBS, NM 88240

Analytical Results For:

PIMA ENVIROMENTAL
 SEBASTIAN OROZCO
 1601 N TURNER STE. 500
 HOBBS NM, 88240
 Fax To:

Received: 03/12/2025
 Reported: 03/18/2025
 Project Name: GRAVE DIGGER ST. COM 3H TB
 Project Number: 6-384
 Project Location: SPUR ENERGY - EDDY CO NM

Sampling Date: 03/11/2025
 Sampling Type: Soil
 Sampling Condition: Cool & Intact
 Sample Received By: Shalyn Rodriguez

Sample ID: V 2 - 2' (H251483-05)

BTX 8021B		mg/kg		Analyzed By: JH						
Analyte	Result	Reporting Limit	Analyzed	Method Blank	BS	% Recovery	True Value QC	RPD	Qualifier	
Benzene*	<0.050	0.050	03/13/2025	ND	2.22	111	2.00	2.31		
Toluene*	<0.050	0.050	03/13/2025	ND	2.30	115	2.00	4.25		
Ethylbenzene*	<0.050	0.050	03/13/2025	ND	2.44	122	2.00	4.34		
Total Xylenes*	<0.150	0.150	03/13/2025	ND	7.48	125	6.00	4.26		
Total BTX	<0.300	0.300	03/13/2025	ND						

Surrogate: 4-Bromofluorobenzene (PID) 125 % 71.5-134

Chloride, SM4500CI-B		mg/kg		Analyzed By: HM					
Analyte	Result	Reporting Limit	Analyzed	Method Blank	BS	% Recovery	True Value QC	RPD	Qualifier
Chloride	496	16.0	03/13/2025	ND	432	108	400	0.00	

TPH 8015M		mg/kg		Analyzed By: MS					
Analyte	Result	Reporting Limit	Analyzed	Method Blank	BS	% Recovery	True Value QC	RPD	Qualifier
GRO C6-C10*	<10.0	10.0	03/13/2025	ND	205	103	200	0.814	
DRO >C10-C28*	<10.0	10.0	03/13/2025	ND	202	101	200	10.3	
EXT DRO >C28-C36	<10.0	10.0	03/13/2025	ND					

Surrogate: 1-Chlorooctane 94.8 % 44.4-145

Surrogate: 1-Chlorooctadecane 88.2 % 40.6-153

Cardinal Laboratories

*=Accredited Analyte

PLEASE NOTE: Liability and Damages. Cardinal's liability and client's exclusive remedy for any claim arising, whether based in contract or tort, shall be limited to the amount paid by client for analyses. All claims, including those for negligence and any other cause whatsoever shall be deemed waived unless made in writing and received by Cardinal within thirty (30) days after completion of the applicable service. In no event shall Cardinal be liable for incidental or consequential damages, including, without limitation, business interruptions, loss of use, or loss of profits incurred by client, its subsidiaries, affiliates or successors arising out of or related to the performance of the services hereunder by Cardinal, regardless of whether such claim is based upon any of the above stated reasons or otherwise. Results relate only to the samples identified above. This report shall not be reproduced except in full with written approval of Cardinal Laboratories.

Celey D. Keene, Lab Director/Quality Manager



PHONE (575) 393-2326 ° 101 E. MARLAND ° HOBBS, NM 88240

Analytical Results For:

PIMA ENVIROMENTAL
 SEBASTIAN OROZCO
 1601 N TURNER STE. 500
 HOBBS NM, 88240
 Fax To:

Received: 03/12/2025
 Reported: 03/18/2025
 Project Name: GRAVE DIGGER ST. COM 3H TB
 Project Number: 6-384
 Project Location: SPUR ENERGY - EDDY CO NM

Sampling Date: 03/11/2025
 Sampling Type: Soil
 Sampling Condition: Cool & Intact
 Sample Received By: Shalyn Rodriguez

Sample ID: V 2 - 4' (H251483-06)

BTEx 8021B		mg/kg		Analyzed By: JH						
Analyte	Result	Reporting Limit	Analyzed	Method Blank	BS	% Recovery	True Value QC	RPD	Qualifier	
Benzene*	<0.050	0.050	03/13/2025	ND	2.22	111	2.00	2.31		
Toluene*	<0.050	0.050	03/13/2025	ND	2.30	115	2.00	4.25		
Ethylbenzene*	<0.050	0.050	03/13/2025	ND	2.44	122	2.00	4.34		
Total Xylenes*	<0.150	0.150	03/13/2025	ND	7.48	125	6.00	4.26		
Total BTEx	<0.300	0.300	03/13/2025	ND						

Surrogate: 4-Bromofluorobenzene (PID) 130 % 71.5-134

Chloride, SM4500CI-B		mg/kg		Analyzed By: HM						
Analyte	Result	Reporting Limit	Analyzed	Method Blank	BS	% Recovery	True Value QC	RPD	Qualifier	
Chloride	208	16.0	03/13/2025	ND	432	108	400	0.00		

TPH 8015M		mg/kg		Analyzed By: MS					
Analyte	Result	Reporting Limit	Analyzed	Method Blank	BS	% Recovery	True Value QC	RPD	Qualifier
GRO C6-C10*	<10.0	10.0	03/13/2025	ND	203	102	200	1.70	
DRO >C10-C28*	<10.0	10.0	03/13/2025	ND	197	98.4	200	1.50	
EXT DRO >C28-C36	<10.0	10.0	03/13/2025	ND					

Surrogate: 1-Chlorooctane 79.6 % 44.4-145

Surrogate: 1-Chlorooctadecane 77.1 % 40.6-153

Cardinal Laboratories

*=Accredited Analyte

PLEASE NOTE: Liability and Damages. Cardinal's liability and client's exclusive remedy for any claim arising, whether based in contract or tort, shall be limited to the amount paid by client for analyses. All claims, including those for negligence and any other cause whatsoever shall be deemed waived unless made in writing and received by Cardinal within thirty (30) days after completion of the applicable service. In no event shall Cardinal be liable for incidental or consequential damages, including, without limitation, business interruptions, loss of use, or loss of profits incurred by client, its subsidiaries, affiliates or successors arising out of or related to the performance of the services hereunder by Cardinal, regardless of whether such claim is based upon any of the above stated reasons or otherwise. Results relate only to the samples identified above. This report shall not be reproduced except in full with written approval of Cardinal Laboratories.

Celey D. Keene, Lab Director/Quality Manager



PHONE (575) 393-2326 ° 101 E. MARLAND ° HOBBS, NM 88240

Analytical Results For:

PIMA ENVIROMENTAL
 SEBASTIAN OROZCO
 1601 N TURNER STE. 500
 HOBBS NM, 88240
 Fax To:

Received: 03/12/2025
 Reported: 03/18/2025
 Project Name: GRAVE DIGGER ST. COM 3H TB
 Project Number: 6-384
 Project Location: SPUR ENERGY - EDDY CO NM

Sampling Date: 03/11/2025
 Sampling Type: Soil
 Sampling Condition: Cool & Intact
 Sample Received By: Shalyn Rodriguez

Sample ID: V 3 - SURFACE (H251483-07)

BTEx 8021B		mg/kg		Analyzed By: JH						
Analyte	Result	Reporting Limit	Analyzed	Method Blank	BS	% Recovery	True Value QC	RPD	Qualifier	
Benzene*	<0.050	0.050	03/13/2025	ND	2.22	111	2.00	2.31		
Toluene*	<0.050	0.050	03/13/2025	ND	2.30	115	2.00	4.25		
Ethylbenzene*	<0.050	0.050	03/13/2025	ND	2.44	122	2.00	4.34		
Total Xylenes*	<0.150	0.150	03/13/2025	ND	7.48	125	6.00	4.26		
Total BTEx	<0.300	0.300	03/13/2025	ND						

Surrogate: 4-Bromofluorobenzene (PID) 123 % 71.5-134

Chloride, SM4500CI-B		mg/kg		Analyzed By: HM						
Analyte	Result	Reporting Limit	Analyzed	Method Blank	BS	% Recovery	True Value QC	RPD	Qualifier	
Chloride	64.0	16.0	03/13/2025	ND	432	108	400	0.00		

TPH 8015M		mg/kg		Analyzed By: MS					
Analyte	Result	Reporting Limit	Analyzed	Method Blank	BS	% Recovery	True Value QC	RPD	Qualifier
GRO C6-C10*	<10.0	10.0	03/13/2025	ND	203	102	200	1.70	
DRO >C10-C28*	<10.0	10.0	03/13/2025	ND	197	98.4	200	1.50	
EXT DRO >C28-C36	<10.0	10.0	03/13/2025	ND					

Surrogate: 1-Chlorooctane 85.3 % 44.4-145

Surrogate: 1-Chlorooctadecane 80.5 % 40.6-153

Cardinal Laboratories

*=Accredited Analyte

PLEASE NOTE: Liability and Damages. Cardinal's liability and client's exclusive remedy for any claim arising, whether based in contract or tort, shall be limited to the amount paid by client for analyses. All claims, including those for negligence and any other cause whatsoever shall be deemed waived unless made in writing and received by Cardinal within thirty (30) days after completion of the applicable service. In no event shall Cardinal be liable for incidental or consequential damages, including, without limitation, business interruptions, loss of use, or loss of profits incurred by client, its subsidiaries, affiliates or successors arising out of or related to the performance of the services hereunder by Cardinal, regardless of whether such claim is based upon any of the above stated reasons or otherwise. Results relate only to the samples identified above. This report shall not be reproduced except in full with written approval of Cardinal Laboratories.

Celey D. Keene, Lab Director/Quality Manager



PHONE (575) 393-2326 ° 101 E. MARLAND ° HOBBS, NM 88240

Analytical Results For:

PIMA ENVIROMENTAL
 SEBASTIAN OROZCO
 1601 N TURNER STE. 500
 HOBBS NM, 88240
 Fax To:

Received: 03/12/2025
 Reported: 03/18/2025
 Project Name: GRAVE DIGGER ST. COM 3H TB
 Project Number: 6-384
 Project Location: SPUR ENERGY - EDDY CO NM

Sampling Date: 03/11/2025
 Sampling Type: Soil
 Sampling Condition: Cool & Intact
 Sample Received By: Shalyn Rodriguez

Sample ID: V 3 - 2' (H251483-08)

BTEx 8021B		mg/kg		Analyzed By: JH						
Analyte	Result	Reporting Limit	Analyzed	Method Blank	BS	% Recovery	True Value QC	RPD	Qualifier	
Benzene*	<0.050	0.050	03/13/2025	ND	2.22	111	2.00	2.31		
Toluene*	<0.050	0.050	03/13/2025	ND	2.30	115	2.00	4.25		
Ethylbenzene*	<0.050	0.050	03/13/2025	ND	2.44	122	2.00	4.34		
Total Xylenes*	<0.150	0.150	03/13/2025	ND	7.48	125	6.00	4.26		
Total BTEx	<0.300	0.300	03/13/2025	ND						

Surrogate: 4-Bromofluorobenzene (PID) 127 % 71.5-134

Chloride, SM4500CI-B		mg/kg		Analyzed By: HM						
Analyte	Result	Reporting Limit	Analyzed	Method Blank	BS	% Recovery	True Value QC	RPD	Qualifier	
Chloride	<16.0	16.0	03/13/2025	ND	432	108	400	0.00		

TPH 8015M		mg/kg		Analyzed By: MS					
Analyte	Result	Reporting Limit	Analyzed	Method Blank	BS	% Recovery	True Value QC	RPD	Qualifier
GRO C6-C10*	<10.0	10.0	03/13/2025	ND	203	102	200	1.70	
DRO >C10-C28*	<10.0	10.0	03/13/2025	ND	197	98.4	200	1.50	
EXT DRO >C28-C36	<10.0	10.0	03/13/2025	ND					

Surrogate: 1-Chlorooctane 88.5 % 44.4-145

Surrogate: 1-Chlorooctadecane 84.3 % 40.6-153

Cardinal Laboratories

*=Accredited Analyte

PLEASE NOTE: Liability and Damages. Cardinal's liability and client's exclusive remedy for any claim arising, whether based in contract or tort, shall be limited to the amount paid by client for analyses. All claims, including those for negligence and any other cause whatsoever shall be deemed waived unless made in writing and received by Cardinal within thirty (30) days after completion of the applicable service. In no event shall Cardinal be liable for incidental or consequential damages, including, without limitation, business interruptions, loss of use, or loss of profits incurred by client, its subsidiaries, affiliates or successors arising out of or related to the performance of the services hereunder by Cardinal, regardless of whether such claim is based upon any of the above stated reasons or otherwise. Results relate only to the samples identified above. This report shall not be reproduced except in full with written approval of Cardinal Laboratories.

Celey D. Keene, Lab Director/Quality Manager



PHONE (575) 393-2326 ° 101 E. MARLAND ° HOBBS, NM 88240

Analytical Results For:

PIMA ENVIROMENTAL
SEBASTIAN OROZCO
1601 N TURNER STE. 500
HOBBS NM, 88240
Fax To:

Received: 03/12/2025
Reported: 03/18/2025
Project Name: GRAVE DIGGER ST. COM 3H TB
Project Number: 6-384
Project Location: SPUR ENERGY - EDDY CO NM

Sampling Date: 03/11/2025
Sampling Type: Soil
Sampling Condition: Cool & Intact
Sample Received By: Shalyn Rodriguez

Sample ID: V 3 - 4' (H251483-09)

BTEx 8021B		mg/kg		Analyzed By: JH					
Analyte	Result	Reporting Limit	Analyzed	Method Blank	BS	% Recovery	True Value QC	RPD	Qualifier
Benzene*	<0.050	0.050	03/13/2025	ND	2.22	111	2.00	2.31	
Toluene*	<0.050	0.050	03/13/2025	ND	2.30	115	2.00	4.25	
Ethylbenzene*	<0.050	0.050	03/13/2025	ND	2.44	122	2.00	4.34	
Total Xylenes*	<0.150	0.150	03/13/2025	ND	7.48	125	6.00	4.26	
Total BTEX	<0.300	0.300	03/13/2025	ND					

Surrogate: 4-Bromofluorobenzene (PID) 127 % 71.5-134

Chloride, SM4500Cl-B		mg/kg		Analyzed By: HM						
Analyte	Result	Reporting Limit	Analyzed	Method Blank	BS	% Recovery	True Value QC	RPD	Qualifier	
Chloride	<16.0	16.0	03/13/2025	ND	432	108	400	0.00		

TPH 8015M		mg/kg		Analyzed By: MS					
Analyte	Result	Reporting Limit	Analyzed	Method Blank	BS	% Recovery	True Value QC	RPD	Qualifier
GRO C6-C10*	<10.0	10.0	03/13/2025	ND	203	102	200	1.70	
DRO >C10-C28*	<10.0	10.0	03/13/2025	ND	197	98.4	200	1.50	
EXT DRO >C28-C36	<10.0	10.0	03/13/2025	ND					

Surrogate: 1-Chlorooctane 81.6 % 44.4-145

Surrogate: 1-Chlorooctadecane 78.1 % 40.6-153

Cardinal Laboratories

*=Accredited Analyte

PLEASE NOTE: Liability and Damages. Cardinal's liability and client's exclusive remedy for any claim arising, whether based in contract or tort, shall be limited to the amount paid by client for analyses. All claims, including those for negligence and any other cause whatsoever shall be deemed waived unless made in writing and received by Cardinal within thirty (30) days after completion of the applicable service. In no event shall Cardinal be liable for incidental or consequential damages, including, without limitation, business interruptions, loss of use, or loss of profits incurred by client, its subsidiaries, affiliates or successors arising out of or related to the performance of the services hereunder by Cardinal, regardless of whether such claim is based upon any of the above stated reasons or otherwise. Results relate only to the samples identified above. This report shall not be reproduced except in full with written approval of Cardinal Laboratories.

Celey D. Keene, Lab Director/Quality Manager



PHONE (575) 393-2326 ° 101 E. MARLAND ° HOBBS, NM 88240

Analytical Results For:

PIMA ENVIROMENTAL
SEBASTIAN OROZCO
1601 N TURNER STE. 500
HOBBS NM, 88240
Fax To:

Received: 03/12/2025
Reported: 03/18/2025
Project Name: GRAVE DIGGER ST. COM 3H TB
Project Number: 6-384
Project Location: SPUR ENERGY - EDDY CO NM

Sampling Date: 03/11/2025
Sampling Type: Soil
Sampling Condition: Cool & Intact
Sample Received By: Shalyn Rodriguez

Sample ID: H 1 - 1.5' (H251483-10)

BTX 8021B		mg/kg		Analyzed By: JH						
Analyte	Result	Reporting Limit	Analyzed	Method Blank	BS	% Recovery	True Value QC	RPD	Qualifier	
Benzene*	<0.050	0.050	03/13/2025	ND	2.22	111	2.00	2.31		
Toluene*	<0.050	0.050	03/13/2025	ND	2.30	115	2.00	4.25		
Ethylbenzene*	<0.050	0.050	03/13/2025	ND	2.44	122	2.00	4.34		
Total Xylenes*	<0.150	0.150	03/13/2025	ND	7.48	125	6.00	4.26		
Total BTX	<0.300	0.300	03/13/2025	ND						

Surrogate: 4-Bromofluorobenzene (PID) 127 % 71.5-134

Chloride, SM4500CI-B		mg/kg		Analyzed By: HM						
Analyte	Result	Reporting Limit	Analyzed	Method Blank	BS	% Recovery	True Value QC	RPD	Qualifier	
Chloride	<16.0	16.0	03/13/2025	ND	432	108	400	0.00		

TPH 8015M		mg/kg		Analyzed By: MS					
Analyte	Result	Reporting Limit	Analyzed	Method Blank	BS	% Recovery	True Value QC	RPD	Qualifier
GRO C6-C10*	<10.0	10.0	03/13/2025	ND	203	102	200	1.70	
DRO >C10-C28*	<10.0	10.0	03/13/2025	ND	197	98.4	200	1.50	
EXT DRO >C28-C36	<10.0	10.0	03/13/2025	ND					

Surrogate: 1-Chlorooctane 88.9 % 44.4-145

Surrogate: 1-Chlorooctadecane 84.3 % 40.6-153

Cardinal Laboratories

*=Accredited Analyte

PLEASE NOTE: Liability and Damages. Cardinal's liability and client's exclusive remedy for any claim arising, whether based in contract or tort, shall be limited to the amount paid by client for analyses. All claims, including those for negligence and any other cause whatsoever shall be deemed waived unless made in writing and received by Cardinal within thirty (30) days after completion of the applicable service. In no event shall Cardinal be liable for incidental or consequential damages, including, without limitation, business interruptions, loss of use, or loss of profits incurred by client, its subsidiaries, affiliates or successors arising out of or related to the performance of the services hereunder by Cardinal, regardless of whether such claim is based upon any of the above stated reasons or otherwise. Results relate only to the samples identified above. This report shall not be reproduced except in full with written approval of Cardinal Laboratories.

Celey D. Keene, Lab Director/Quality Manager



PHONE (575) 393-2326 ° 101 E. MARLAND ° HOBBS, NM 88240

Analytical Results For:

PIMA ENVIROMENTAL
SEBASTIAN OROZCO
1601 N TURNER STE. 500
HOBBS NM, 88240
Fax To:

Received: 03/12/2025
Reported: 03/18/2025
Project Name: GRAVE DIGGER ST. COM 3H TB
Project Number: 6-384
Project Location: SPUR ENERGY - EDDY CO NM

Sampling Date: 03/11/2025
Sampling Type: Soil
Sampling Condition: Cool & Intact
Sample Received By: Shalyn Rodriguez

Sample ID: H 1 - 1' (H251483-11)

BTEx 8021B		mg/kg		Analyzed By: JH						
Analyte	Result	Reporting Limit	Analyzed	Method Blank	BS	% Recovery	True Value QC	RPD	Qualifier	
Benzene*	<0.050	0.050	03/13/2025	ND	2.22	111	2.00	2.31		
Toluene*	<0.050	0.050	03/13/2025	ND	2.30	115	2.00	4.25		
Ethylbenzene*	<0.050	0.050	03/13/2025	ND	2.44	122	2.00	4.34		
Total Xylenes*	<0.150	0.150	03/13/2025	ND	7.48	125	6.00	4.26		
Total BTEx	<0.300	0.300	03/13/2025	ND						

Surrogate: 4-Bromofluorobenzene (PID) 127 % 71.5-134

Chloride, SM4500CI-B		mg/kg		Analyzed By: HM						
Analyte	Result	Reporting Limit	Analyzed	Method Blank	BS	% Recovery	True Value QC	RPD	Qualifier	
Chloride	<16.0	16.0	03/13/2025	ND	432	108	400	0.00		

TPH 8015M		mg/kg		Analyzed By: MS					
Analyte	Result	Reporting Limit	Analyzed	Method Blank	BS	% Recovery	True Value QC	RPD	Qualifier
GRO C6-C10*	<10.0	10.0	03/13/2025	ND	203	102	200	1.70	
DRO >C10-C28*	<10.0	10.0	03/13/2025	ND	197	98.4	200	1.50	
EXT DRO >C28-C36	<10.0	10.0	03/13/2025	ND					

Surrogate: 1-Chlorooctane 87.3 % 44.4-145

Surrogate: 1-Chlorooctadecane 81.7 % 40.6-153

Cardinal Laboratories

*=Accredited Analyte

PLEASE NOTE: Liability and Damages. Cardinal's liability and client's exclusive remedy for any claim arising, whether based in contract or tort, shall be limited to the amount paid by client for analyses. All claims, including those for negligence and any other cause whatsoever shall be deemed waived unless made in writing and received by Cardinal within thirty (30) days after completion of the applicable service. In no event shall Cardinal be liable for incidental or consequential damages, including, without limitation, business interruptions, loss of use, or loss of profits incurred by client, its subsidiaries, affiliates or successors arising out of or related to the performance of the services hereunder by Cardinal, regardless of whether such claim is based upon any of the above stated reasons or otherwise. Results relate only to the samples identified above. This report shall not be reproduced except in full with written approval of Cardinal Laboratories.

Celey D. Keene, Lab Director/Quality Manager



PHONE (575) 393-2326 ° 101 E. MARLAND ° HOBBS, NM 88240

Analytical Results For:

PIMA ENVIROMENTAL
 SEBASTIAN OROZCO
 1601 N TURNER STE. 500
 HOBBS NM, 88240
 Fax To:

Received: 03/12/2025
 Reported: 03/18/2025
 Project Name: GRAVE DIGGER ST. COM 3H TB
 Project Number: 6-384
 Project Location: SPUR ENERGY - EDDY CO NM

Sampling Date: 03/11/2025
 Sampling Type: Soil
 Sampling Condition: Cool & Intact
 Sample Received By: Shalyn Rodriguez

Sample ID: H 2 - 1.5' (H251483-12)

BTX 8021B		mg/kg		Analyzed By: JH						
Analyte	Result	Reporting Limit	Analyzed	Method Blank	BS	% Recovery	True Value QC	RPD	Qualifier	
Benzene*	<0.050	0.050	03/13/2025	ND	2.22	111	2.00	2.31		
Toluene*	<0.050	0.050	03/13/2025	ND	2.30	115	2.00	4.25		
Ethylbenzene*	<0.050	0.050	03/13/2025	ND	2.44	122	2.00	4.34		
Total Xylenes*	<0.150	0.150	03/13/2025	ND	7.48	125	6.00	4.26		
Total BTX	<0.300	0.300	03/13/2025	ND						

Surrogate: 4-Bromofluorobenzene (PID) 125 % 71.5-134

Chloride, SM4500CI-B		mg/kg		Analyzed By: HM						
Analyte	Result	Reporting Limit	Analyzed	Method Blank	BS	% Recovery	True Value QC	RPD	Qualifier	
Chloride	<16.0	16.0	03/13/2025	ND	432	108	400	0.00		

TPH 8015M		mg/kg		Analyzed By: MS					
Analyte	Result	Reporting Limit	Analyzed	Method Blank	BS	% Recovery	True Value QC	RPD	Qualifier
GRO C6-C10*	<10.0	10.0	03/13/2025	ND	203	102	200	1.70	
DRO >C10-C28*	<10.0	10.0	03/13/2025	ND	197	98.4	200	1.50	
EXT DRO >C28-C36	<10.0	10.0	03/13/2025	ND					

Surrogate: 1-Chlorooctane 84.4 % 44.4-145

Surrogate: 1-Chlorooctadecane 79.8 % 40.6-153

Cardinal Laboratories

*=Accredited Analyte

PLEASE NOTE: Liability and Damages. Cardinal's liability and client's exclusive remedy for any claim arising, whether based in contract or tort, shall be limited to the amount paid by client for analyses. All claims, including those for negligence and any other cause whatsoever shall be deemed waived unless made in writing and received by Cardinal within thirty (30) days after completion of the applicable service. In no event shall Cardinal be liable for incidental or consequential damages, including, without limitation, business interruptions, loss of use, or loss of profits incurred by client, its subsidiaries, affiliates or successors arising out of or related to the performance of the services hereunder by Cardinal, regardless of whether such claim is based upon any of the above stated reasons or otherwise. Results relate only to the samples identified above. This report shall not be reproduced except in full with written approval of Cardinal Laboratories.

Celey D. Keene, Lab Director/Quality Manager



PHONE (575) 393-2326 ° 101 E. MARLAND ° HOBBS, NM 88240

Analytical Results For:

PIMA ENVIROMENTAL
SEBASTIAN OROZCO
1601 N TURNER STE. 500
HOBBS NM, 88240
Fax To:

Received: 03/12/2025
Reported: 03/18/2025
Project Name: GRAVE DIGGER ST. COM 3H TB
Project Number: 6-384
Project Location: SPUR ENERGY - EDDY CO NM

Sampling Date: 03/11/2025
Sampling Type: Soil
Sampling Condition: Cool & Intact
Sample Received By: Shalyn Rodriguez

Sample ID: H 2 - 1' (H251483-13)

BTEx 8021B		mg/kg		Analyzed By: JH						
Analyte	Result	Reporting Limit	Analyzed	Method Blank	BS	% Recovery	True Value QC	RPD	Qualifier	
Benzene*	<0.050	0.050	03/14/2025	ND	2.22	111	2.00	2.31		
Toluene*	<0.050	0.050	03/14/2025	ND	2.30	115	2.00	4.25		
Ethylbenzene*	<0.050	0.050	03/14/2025	ND	2.44	122	2.00	4.34		
Total Xylenes*	<0.150	0.150	03/14/2025	ND	7.48	125	6.00	4.26		
Total BTEX	<0.300	0.300	03/14/2025	ND						

Surrogate: 4-Bromofluorobenzene (PID) 127 % 71.5-134

Chloride, SM4500Cl-B		mg/kg		Analyzed By: HM						
Analyte	Result	Reporting Limit	Analyzed	Method Blank	BS	% Recovery	True Value QC	RPD	Qualifier	
Chloride	16.0	16.0	03/13/2025	ND	432	108	400	0.00		

TPH 8015M		mg/kg		Analyzed By: MS					
Analyte	Result	Reporting Limit	Analyzed	Method Blank	BS	% Recovery	True Value QC	RPD	Qualifier
GRO C6-C10*	<10.0	10.0	03/13/2025	ND	203	102	200	1.70	
DRO >C10-C28*	<10.0	10.0	03/13/2025	ND	197	98.4	200	1.50	
EXT DRO >C28-C36	<10.0	10.0	03/13/2025	ND					

Surrogate: 1-Chlorooctane 84.6 % 44.4-145

Surrogate: 1-Chlorooctadecane 80.1 % 40.6-153

Cardinal Laboratories

*=Accredited Analyte

PLEASE NOTE: Liability and Damages. Cardinal's liability and client's exclusive remedy for any claim arising, whether based in contract or tort, shall be limited to the amount paid by client for analyses. All claims, including those for negligence and any other cause whatsoever shall be deemed waived unless made in writing and received by Cardinal within thirty (30) days after completion of the applicable service. In no event shall Cardinal be liable for incidental or consequential damages, including, without limitation, business interruptions, loss of use, or loss of profits incurred by client, its subsidiaries, affiliates or successors arising out of or related to the performance of the services hereunder by Cardinal, regardless of whether such claim is based upon any of the above stated reasons or otherwise. Results relate only to the samples identified above. This report shall not be reproduced except in full with written approval of Cardinal Laboratories.

Celey D. Keene, Lab Director/Quality Manager



PHONE (575) 393-2326 ° 101 E. MARLAND ° HOBBS, NM 88240

Notes and Definitions

QM-07	The spike recovery was outside acceptance limits for the MS and/or MSD. The batch was accepted based on acceptable LCS recovery.
BS-3	Blank spike recovery outside of lab established statistical limits, but still within method limits. Data is not adversely affected.
BS1	Blank spike recovery above laboratory acceptance criteria. Results for analyte potentially biased high.
ND	Analyte NOT DETECTED at or above the reporting limit
RPD	Relative Percent Difference
**	Samples not received at proper temperature of 6°C or below.
***	Insufficient time to reach temperature.
-	Chloride by SM4500Cl-B does not require samples be received at or below 6°C Samples reported on an as received basis (wet) unless otherwise noted on report

Cardinal Laboratories

*=Accredited Analyte

PLEASE NOTE: Liability and Damages. Cardinal's liability and client's exclusive remedy for any claim arising, whether based in contract or tort, shall be limited to the amount paid by client for analyses. All claims, including those for negligence and any other cause whatsoever shall be deemed waived unless made in writing and received by Cardinal within thirty (30) days after completion of the applicable service. In no event shall Cardinal be liable for incidental or consequential damages, including, without limitation, business interruptions, loss of use, or loss of profits incurred by client, its subsidiaries, affiliates or successors arising out of or related to the performance of the services hereunder by Cardinal, regardless of whether such claim is based upon any of the above stated reasons or otherwise. Results relate only to the samples identified above. This report shall not be reproduced except in full with written approval of Cardinal Laboratories.

A handwritten signature in black ink, appearing to read "Celey D. Keene".

Celey D. Keene, Lab Director/Quality Manager



CHAIN-OF-CUSTODY AND ANALYSIS REQUEST

101 East Marland, Hobbs, NM 88240
(575) 393-2326 FAX (575) 393-2476

Company Name: Pima Environmental Services				BILL TO			
Project Manager: Sebastian Orozco				P.O. #:			
Address: 5614 N. Lovington Hwy				Company:			
City: Hobbs				Attn:			
Phone #: 575-964-7740				State: NM Zip: 88240			
Fax #:				Address:			
Project #: 6-384				City:			
Project Owner: SPUR				State:			
Project Location: Grave Digger St Cor. SH TB				Zip:			
Sample Name: Marisa Loya				Phone #:			
				Fax #:			

FOR LAB USE ONLY

Lab I.D.	Sample I.D.	MATRIX								DATE	TIME	ANALYSIS REQUEST
		(G)RAB OR (C)OMP.	# CONTAINERS	GROUNDWATER	WASTEWATER	SOIL	OIL	SLUDGE	OTHER :			
H251483	V1-Surface	X								8:00		BTX
	V1-2'									8:07	X	TPT
	V1-4'									8:09	X	Chlorides
	V2-Surface									8:11	/	
	V2-2'									8:14	/	
	V2-9'									8:16	/	
	V3-Surface									8:19	/	
	V3-2'									8:24	/	
	V3-4'									8:24	/	
	V1-1.5'									8:30	/	

PLEASE NOTE: Liability and Damages: Cardinal's liability and client's exclusive remedy for any claim arising whether based in contract or tort shall be limited to the amount paid by the client for the analyses. All claims, including those for negligence and any other cause whatsoever shall be deemed waived unless made in writing and received by Cardinal within 30 days after completion of the applicable service. In no event shall Cardinal be liable for incidental or consequential damages, including without limitation business interruption, loss of use, or loss of profits incurred by client, its subsidiaries, affiliates or successors arising out of or related to the performance of services hereunder by Cardinal, regardless of whether such claim is based upon any of the above stated reasons or otherwise.

Relinquished By:	Date: 3/25/03	Received By:	Signature:
Melanie Hildner	Time: 1:45 PM		
Delivered By: (Circle One)	- 2.4 g to 0.3"	SAMPLE CONDITION	CHECKED BY: (Initials)
Sampler - UPS - Bus - Other:	- 2.1" #140	Cool <input checked="" type="checkbox"/> Intact <input checked="" type="checkbox"/>	SR
REMARKS: Billing: 7610-7410, 999180 Standard			



PHONE (575) 393-2326 ° 101 E. MARLAND ° HOBBS, NM 88240

March 27, 2025

SEBASTIAN OROZCO

PIMA ENVIROMENTAL

1601 N TURNER STE. 500

HOBBS, NM 88240

RE: GRAVE DIGGER ST. COM 3H TB

Enclosed are the results of analyses for samples received by the laboratory on 03/26/25 15:32.

Cardinal Laboratories is accredited through Texas NELAP under certificate number TX-C24-00112. Accreditation applies to drinking water, non-potable water and solid and chemical materials. All accredited analytes are denoted by an asterisk (*). For a complete list of accredited analytes and matrices visit the TCEQ website at www.tceq.texas.gov/field/qa/lab_accred_certif.html.

Cardinal Laboratories is accredited through the State of Colorado Department of Public Health and Environment for:

Method EPA 552.2	Haloacetic Acids (HAA-5)
Method EPA 524.2	Total Trihalomethanes (TTHM)
Method EPA 524.4	Regulated VOCs (V1, V2, V3)

Accreditation applies to public drinking water matrices.

This report meets NELAP requirements and is made up of a cover page, analytical results, and a copy of the original chain-of-custody. If you have any questions concerning this report, please feel free to contact me.

Sincerely,

A handwritten signature in black ink that reads "Celey D. Keene". The signature is written in a cursive, flowing style.

Celey D. Keene

Lab Director/Quality Manager



PHONE (575) 393-2326 ° 101 E. MARLAND ° HOBBS, NM 88240

Analytical Results For:

PIMA ENVIROMENTAL
 SEBASTIAN OROZCO
 1601 N TURNER STE. 500
 HOBBS NM, 88240
 Fax To:

Received: 03/26/2025
 Reported: 03/27/2025
 Project Name: GRAVE DIGGER ST. COM 3H TB
 Project Number: 6-384
 Project Location: SPUR ENERGY - EDDY CO NM

Sampling Date: 03/26/2025
 Sampling Type: Soil
 Sampling Condition: Cool & Intact
 Sample Received By: Alyssa Parras

Sample ID: CS 1 (H251787-01)

BTX 8021B		mg/kg		Analyzed By: JH					
Analyte	Result	Reporting Limit	Analyzed	Method Blank	BS	% Recovery	True Value QC	RPD	Qualifier
Benzene*	<0.050	0.050	03/26/2025	ND	1.80	90.2	2.00	0.490	
Toluene*	<0.050	0.050	03/26/2025	ND	1.96	97.8	2.00	0.864	
Ethylbenzene*	<0.050	0.050	03/26/2025	ND	1.92	95.9	2.00	1.57	
Total Xylenes*	<0.150	0.150	03/26/2025	ND	5.74	95.7	6.00	1.23	
Total BTX	<0.300	0.300	03/26/2025	ND					

Surrogate: 4-Bromofluorobenzene (PID) 107 % 71.5-134

Chloride, SM4500Cl-B		mg/kg		Analyzed By: HM						
Analyte	Result	Reporting Limit	Analyzed	Method Blank	BS	% Recovery	True Value QC	RPD	Qualifier	
Chloride	32.0	16.0	03/27/2025	ND	448	112	400	0.00		

TPH 8015M		mg/kg		Analyzed By: MS					
Analyte	Result	Reporting Limit	Analyzed	Method Blank	BS	% Recovery	True Value QC	RPD	Qualifier
GRO C6-C10*	<10.0	10.0	03/26/2025	ND	187	93.7	200	1.28	
DRO >C10-C28*	<10.0	10.0	03/26/2025	ND	188	94.1	200	0.538	
EXT DRO >C28-C36	<10.0	10.0	03/26/2025	ND					

Surrogate: 1-Chlorooctane 85.5 % 44.4-145

Surrogate: 1-Chlorooctadecane 85.6 % 40.6-153

Cardinal Laboratories

*=Accredited Analyte

PLEASE NOTE: Liability and Damages. Cardinal's liability and client's exclusive remedy for any claim arising, whether based in contract or tort, shall be limited to the amount paid by client for analyses. All claims, including those for negligence and any other cause whatsoever shall be deemed waived unless made in writing and received by Cardinal within thirty (30) days after completion of the applicable service. In no event shall Cardinal be liable for incidental or consequential damages, including, without limitation, business interruptions, loss of use, or loss of profits incurred by client, its subsidiaries, affiliates or successors arising out of or related to the performance of the services hereunder by Cardinal, regardless of whether such claim is based upon any of the above stated reasons or otherwise. Results relate only to the samples identified above. This report shall not be reproduced except in full with written approval of Cardinal Laboratories.

Celey D. Keene, Lab Director/Quality Manager



PHONE (575) 393-2326 ° 101 E. MARLAND ° HOBBS, NM 88240

Analytical Results For:

PIMA ENVIROMENTAL
SEBASTIAN OROZCO
1601 N TURNER STE. 500
HOBBS NM, 88240
Fax To:

Received: 03/26/2025
Reported: 03/27/2025
Project Name: GRAVE DIGGER ST. COM 3H TB
Project Number: 6-384
Project Location: SPUR ENERGY - EDDY CO NM

Sampling Date: 03/26/2025
Sampling Type: Soil
Sampling Condition: Cool & Intact
Sample Received By: Alyssa Parras

Sample ID: CS 2 (H251787-02)

BTX 8021B		mg/kg		Analyzed By: JH					
Analyte	Result	Reporting Limit	Analyzed	Method Blank	BS	% Recovery	True Value QC	RPD	Qualifier
Benzene*	<0.050	0.050	03/26/2025	ND	1.80	90.2	2.00	0.490	
Toluene*	<0.050	0.050	03/26/2025	ND	1.96	97.8	2.00	0.864	
Ethylbenzene*	<0.050	0.050	03/26/2025	ND	1.92	95.9	2.00	1.57	
Total Xylenes*	<0.150	0.150	03/26/2025	ND	5.74	95.7	6.00	1.23	
Total BTX	<0.300	0.300	03/26/2025	ND					

Surrogate: 4-Bromofluorobenzene (PID) 110 % 71.5-134

Chloride, SM4500CI-B		mg/kg		Analyzed By: HM						
Analyte	Result	Reporting Limit	Analyzed	Method Blank	BS	% Recovery	True Value QC	RPD	Qualifier	
Chloride	16.0	16.0	03/27/2025	ND	448	112	400	0.00		

TPH 8015M		mg/kg		Analyzed By: MS					
Analyte	Result	Reporting Limit	Analyzed	Method Blank	BS	% Recovery	True Value QC	RPD	Qualifier
GRO C6-C10*	<10.0	10.0	03/26/2025	ND	187	93.7	200	1.28	
DRO >C10-C28*	<10.0	10.0	03/26/2025	ND	188	94.1	200	0.538	
EXT DRO >C28-C36	<10.0	10.0	03/26/2025	ND					

Surrogate: 1-Chlorooctane 83.8 % 44.4-145

Surrogate: 1-Chlorooctadecane 82.2 % 40.6-153

Cardinal Laboratories

*=Accredited Analyte

PLEASE NOTE: Liability and Damages. Cardinal's liability and client's exclusive remedy for any claim arising, whether based in contract or tort, shall be limited to the amount paid by client for analyses. All claims, including those for negligence and any other cause whatsoever shall be deemed waived unless made in writing and received by Cardinal within thirty (30) days after completion of the applicable service. In no event shall Cardinal be liable for incidental or consequential damages, including, without limitation, business interruptions, loss of use, or loss of profits incurred by client, its subsidiaries, affiliates or successors arising out of or related to the performance of the services hereunder by Cardinal, regardless of whether such claim is based upon any of the above stated reasons or otherwise. Results relate only to the samples identified above. This report shall not be reproduced except in full with written approval of Cardinal Laboratories.

Celey D. Keene, Lab Director/Quality Manager



PHONE (575) 393-2326 ° 101 E. MARLAND ° HOBBS, NM 88240

Analytical Results For:

PIMA ENVIROMENTAL
SEBASTIAN OROZCO
1601 N TURNER STE. 500
HOBBS NM, 88240
Fax To:

Received: 03/26/2025
Reported: 03/27/2025
Project Name: GRAVE DIGGER ST. COM 3H TB
Project Number: 6-384
Project Location: SPUR ENERGY - EDDY CO NM

Sampling Date: 03/26/2025
Sampling Type: Soil
Sampling Condition: Cool & Intact
Sample Received By: Alyssa Parras

Sample ID: CS 3 (H251787-03)

BTEx 8021B		mg/kg		Analyzed By: JH						
Analyte	Result	Reporting Limit	Analyzed	Method Blank	BS	% Recovery	True Value QC	RPD	Qualifier	
Benzene*	<0.050	0.050	03/26/2025	ND	1.80	90.2	2.00	0.490		
Toluene*	<0.050	0.050	03/26/2025	ND	1.96	97.8	2.00	0.864		
Ethylbenzene*	<0.050	0.050	03/26/2025	ND	1.92	95.9	2.00	1.57		
Total Xylenes*	<0.150	0.150	03/26/2025	ND	5.74	95.7	6.00	1.23		
Total BTEx	<0.300	0.300	03/26/2025	ND						

Surrogate: 4-Bromofluorobenzene (PID) 106 % 71.5-134

Chloride, SM4500CI-B		mg/kg		Analyzed By: HM						
Analyte	Result	Reporting Limit	Analyzed	Method Blank	BS	% Recovery	True Value QC	RPD	Qualifier	
Chloride	16.0	16.0	03/27/2025	ND	448	112	400	0.00		

TPH 8015M		mg/kg		Analyzed By: MS					
Analyte	Result	Reporting Limit	Analyzed	Method Blank	BS	% Recovery	True Value QC	RPD	Qualifier
GRO C6-C10*	<10.0	10.0	03/26/2025	ND	187	93.7	200	1.28	
DRO >C10-C28*	<10.0	10.0	03/26/2025	ND	188	94.1	200	0.538	
EXT DRO >C28-C36	<10.0	10.0	03/26/2025	ND					

Surrogate: 1-Chlorooctane 90.2 % 44.4-145

Surrogate: 1-Chlorooctadecane 87.9 % 40.6-153

Cardinal Laboratories

*=Accredited Analyte

PLEASE NOTE: Liability and Damages. Cardinal's liability and client's exclusive remedy for any claim arising, whether based in contract or tort, shall be limited to the amount paid by client for analyses. All claims, including those for negligence and any other cause whatsoever shall be deemed waived unless made in writing and received by Cardinal within thirty (30) days after completion of the applicable service. In no event shall Cardinal be liable for incidental or consequential damages, including, without limitation, business interruptions, loss of use, or loss of profits incurred by client, its subsidiaries, affiliates or successors arising out of or related to the performance of the services hereunder by Cardinal, regardless of whether such claim is based upon any of the above stated reasons or otherwise. Results relate only to the samples identified above. This report shall not be reproduced except in full with written approval of Cardinal Laboratories.

Celey D. Keene, Lab Director/Quality Manager



PHONE (575) 393-2326 ° 101 E. MARLAND ° HOBBS, NM 88240

Analytical Results For:

PIMA ENVIROMENTAL
 SEBASTIAN OROZCO
 1601 N TURNER STE. 500
 HOBBS NM, 88240
 Fax To:

Received: 03/26/2025
 Reported: 03/27/2025
 Project Name: GRAVE DIGGER ST. COM 3H TB
 Project Number: 6-384
 Project Location: SPUR ENERGY - EDDY CO NM

Sampling Date: 03/26/2025
 Sampling Type: Soil
 Sampling Condition: Cool & Intact
 Sample Received By: Alyssa Parras

Sample ID: CS 4 (H251787-04)

BTEx 8021B		mg/kg		Analyzed By: JH						
Analyte	Result	Reporting Limit	Analyzed	Method Blank	BS	% Recovery	True Value QC	RPD	Qualifier	
Benzene*	<0.050	0.050	03/26/2025	ND	1.80	90.2	2.00	0.490		
Toluene*	<0.050	0.050	03/26/2025	ND	1.96	97.8	2.00	0.864		
Ethylbenzene*	<0.050	0.050	03/26/2025	ND	1.92	95.9	2.00	1.57		
Total Xylenes*	<0.150	0.150	03/26/2025	ND	5.74	95.7	6.00	1.23		
Total BTEx	<0.300	0.300	03/26/2025	ND						

Surrogate: 4-Bromofluorobenzene (PID) 106 % 71.5-134

Chloride, SM4500CI-B		mg/kg		Analyzed By: HM						
Analyte	Result	Reporting Limit	Analyzed	Method Blank	BS	% Recovery	True Value QC	RPD	Qualifier	
Chloride	16.0	16.0	03/27/2025	ND	448	112	400	0.00		

TPH 8015M		mg/kg		Analyzed By: MS					
Analyte	Result	Reporting Limit	Analyzed	Method Blank	BS	% Recovery	True Value QC	RPD	Qualifier
GRO C6-C10*	<10.0	10.0	03/26/2025	ND	187	93.7	200	1.28	
DRO >C10-C28*	<10.0	10.0	03/26/2025	ND	188	94.1	200	0.538	
EXT DRO >C28-C36	<10.0	10.0	03/26/2025	ND					

Surrogate: 1-Chlorooctane 84.8 % 44.4-145

Surrogate: 1-Chlorooctadecane 82.7 % 40.6-153

Cardinal Laboratories

*=Accredited Analyte

PLEASE NOTE: Liability and Damages. Cardinal's liability and client's exclusive remedy for any claim arising, whether based in contract or tort, shall be limited to the amount paid by client for analyses. All claims, including those for negligence and any other cause whatsoever shall be deemed waived unless made in writing and received by Cardinal within thirty (30) days after completion of the applicable service. In no event shall Cardinal be liable for incidental or consequential damages, including, without limitation, business interruptions, loss of use, or loss of profits incurred by client, its subsidiaries, affiliates or successors arising out of or related to the performance of the services hereunder by Cardinal, regardless of whether such claim is based upon any of the above stated reasons or otherwise. Results relate only to the samples identified above. This report shall not be reproduced except in full with written approval of Cardinal Laboratories.

Celey D. Keene, Lab Director/Quality Manager



PHONE (575) 393-2326 ° 101 E. MARLAND ° HOBBS, NM 88240

Analytical Results For:

PIMA ENVIROMENTAL
 SEBASTIAN OROZCO
 1601 N TURNER STE. 500
 HOBBS NM, 88240
 Fax To:

Received: 03/26/2025
 Reported: 03/27/2025
 Project Name: GRAVE DIGGER ST. COM 3H TB
 Project Number: 6-384
 Project Location: SPUR ENERGY - EDDY CO NM

Sampling Date: 03/26/2025
 Sampling Type: Soil
 Sampling Condition: Cool & Intact
 Sample Received By: Alyssa Parras

Sample ID: CS 5 (H251787-05)

BTEx 8021B		mg/kg		Analyzed By: JH						
Analyte	Result	Reporting Limit	Analyzed	Method Blank	BS	% Recovery	True Value QC	RPD	Qualifier	
Benzene*	<0.050	0.050	03/26/2025	ND	1.80	90.2	2.00	0.490		
Toluene*	<0.050	0.050	03/26/2025	ND	1.96	97.8	2.00	0.864		
Ethylbenzene*	<0.050	0.050	03/26/2025	ND	1.92	95.9	2.00	1.57		
Total Xylenes*	<0.150	0.150	03/26/2025	ND	5.74	95.7	6.00	1.23		
Total BTEx	<0.300	0.300	03/26/2025	ND						

Surrogate: 4-Bromofluorobenzene (PID) 108 % 71.5-134

Chloride, SM4500CI-B		mg/kg		Analyzed By: AC						
Analyte	Result	Reporting Limit	Analyzed	Method Blank	BS	% Recovery	True Value QC	RPD	Qualifier	
Chloride	<16.0	16.0	03/27/2025	ND	416	104	400	0.00		

TPH 8015M		mg/kg		Analyzed By: MS					
Analyte	Result	Reporting Limit	Analyzed	Method Blank	BS	% Recovery	True Value QC	RPD	Qualifier
GRO C6-C10*	<10.0	10.0	03/26/2025	ND	187	93.7	200	1.28	
DRO >C10-C28*	<10.0	10.0	03/26/2025	ND	188	94.1	200	0.538	
EXT DRO >C28-C36	<10.0	10.0	03/26/2025	ND					

Surrogate: 1-Chlorooctane 86.8 % 44.4-145

Surrogate: 1-Chlorooctadecane 85.0 % 40.6-153

Cardinal Laboratories

*=Accredited Analyte

PLEASE NOTE: Liability and Damages. Cardinal's liability and client's exclusive remedy for any claim arising, whether based in contract or tort, shall be limited to the amount paid by client for analyses. All claims, including those for negligence and any other cause whatsoever shall be deemed waived unless made in writing and received by Cardinal within thirty (30) days after completion of the applicable service. In no event shall Cardinal be liable for incidental or consequential damages, including, without limitation, business interruptions, loss of use, or loss of profits incurred by client, its subsidiaries, affiliates or successors arising out of or related to the performance of the services hereunder by Cardinal, regardless of whether such claim is based upon any of the above stated reasons or otherwise. Results relate only to the samples identified above. This report shall not be reproduced except in full with written approval of Cardinal Laboratories.

Celey D. Keene, Lab Director/Quality Manager



PHONE (575) 393-2326 ° 101 E. MARLAND ° HOBBS, NM 88240

Analytical Results For:

PIMA ENVIROMENTAL
 SEBASTIAN OROZCO
 1601 N TURNER STE. 500
 HOBBS NM, 88240
 Fax To:

Received: 03/26/2025
 Reported: 03/27/2025
 Project Name: GRAVE DIGGER ST. COM 3H TB
 Project Number: 6-384
 Project Location: SPUR ENERGY - EDDY CO NM

Sampling Date: 03/26/2025
 Sampling Type: Soil
 Sampling Condition: Cool & Intact
 Sample Received By: Alyssa Parras

Sample ID: CSW 1 (H251787-06)

BTEx 8021B		mg/kg		Analyzed By: JH						
Analyte	Result	Reporting Limit	Analyzed	Method Blank	BS	% Recovery	True Value QC	RPD	Qualifier	
Benzene*	<0.050	0.050	03/26/2025	ND	1.80	90.2	2.00	0.490		
Toluene*	<0.050	0.050	03/26/2025	ND	1.96	97.8	2.00	0.864		
Ethylbenzene*	<0.050	0.050	03/26/2025	ND	1.92	95.9	2.00	1.57		
Total Xylenes*	<0.150	0.150	03/26/2025	ND	5.74	95.7	6.00	1.23		
Total BTEx	<0.300	0.300	03/26/2025	ND						

Surrogate: 4-Bromofluorobenzene (PID) 106 % 71.5-134

Chloride, SM4500CI-B		mg/kg		Analyzed By: AC						
Analyte	Result	Reporting Limit	Analyzed	Method Blank	BS	% Recovery	True Value QC	RPD	Qualifier	
Chloride	16.0	16.0	03/27/2025	ND	416	104	400	0.00		

TPH 8015M		mg/kg		Analyzed By: MS					
Analyte	Result	Reporting Limit	Analyzed	Method Blank	BS	% Recovery	True Value QC	RPD	Qualifier
GRO C6-C10*	<10.0	10.0	03/26/2025	ND	187	93.7	200	1.28	
DRO >C10-C28*	<10.0	10.0	03/26/2025	ND	188	94.1	200	0.538	
EXT DRO >C28-C36	<10.0	10.0	03/26/2025	ND					

Surrogate: 1-Chlorooctane 81.0 % 44.4-145

Surrogate: 1-Chlorooctadecane 81.0 % 40.6-153

Cardinal Laboratories

*=Accredited Analyte

PLEASE NOTE: Liability and Damages. Cardinal's liability and client's exclusive remedy for any claim arising, whether based in contract or tort, shall be limited to the amount paid by client for analyses. All claims, including those for negligence and any other cause whatsoever shall be deemed waived unless made in writing and received by Cardinal within thirty (30) days after completion of the applicable service. In no event shall Cardinal be liable for incidental or consequential damages, including, without limitation, business interruptions, loss of use, or loss of profits incurred by client, its subsidiaries, affiliates or successors arising out of or related to the performance of the services hereunder by Cardinal, regardless of whether such claim is based upon any of the above stated reasons or otherwise. Results relate only to the samples identified above. This report shall not be reproduced except in full with written approval of Cardinal Laboratories.

Celey D. Keene, Lab Director/Quality Manager



PHONE (575) 393-2326 ° 101 E. MARLAND ° HOBBS, NM 88240

Analytical Results For:

PIMA ENVIROMENTAL
 SEBASTIAN OROZCO
 1601 N TURNER STE. 500
 HOBBS NM, 88240
 Fax To:

Received: 03/26/2025
 Reported: 03/27/2025
 Project Name: GRAVE DIGGER ST. COM 3H TB
 Project Number: 6-384
 Project Location: SPUR ENERGY - EDDY CO NM

Sampling Date: 03/26/2025
 Sampling Type: Soil
 Sampling Condition: Cool & Intact
 Sample Received By: Alyssa Parras

Sample ID: CSW 2 (H251787-07)

BTX 8021B		mg/kg		Analyzed By: JH					
Analyte	Result	Reporting Limit	Analyzed	Method Blank	BS	% Recovery	True Value QC	RPD	Qualifier
Benzene*	<0.050	0.050	03/26/2025	ND	1.80	90.2	2.00	0.490	
Toluene*	<0.050	0.050	03/26/2025	ND	1.96	97.8	2.00	0.864	
Ethylbenzene*	<0.050	0.050	03/26/2025	ND	1.92	95.9	2.00	1.57	
Total Xylenes*	<0.150	0.150	03/26/2025	ND	5.74	95.7	6.00	1.23	
Total BTX	<0.300	0.300	03/26/2025	ND					

Surrogate: 4-Bromofluorobenzene (PID) 106 % 71.5-134

Chloride, SM4500CI-B		mg/kg		Analyzed By: AC						
Analyte	Result	Reporting Limit	Analyzed	Method Blank	BS	% Recovery	True Value QC	RPD	Qualifier	
Chloride	<16.0	16.0	03/27/2025	ND	416	104	400	0.00		

TPH 8015M		mg/kg		Analyzed By: MS					
Analyte	Result	Reporting Limit	Analyzed	Method Blank	BS	% Recovery	True Value QC	RPD	Qualifier
GRO C6-C10*	<10.0	10.0	03/26/2025	ND	187	93.7	200	1.28	
DRO >C10-C28*	<10.0	10.0	03/26/2025	ND	188	94.1	200	0.538	
EXT DRO >C28-C36	<10.0	10.0	03/26/2025	ND					

Surrogate: 1-Chlorooctane 84.2 % 44.4-145

Surrogate: 1-Chlorooctadecane 82.5 % 40.6-153

Cardinal Laboratories

*=Accredited Analyte

PLEASE NOTE: Liability and Damages. Cardinal's liability and client's exclusive remedy for any claim arising, whether based in contract or tort, shall be limited to the amount paid by client for analyses. All claims, including those for negligence and any other cause whatsoever shall be deemed waived unless made in writing and received by Cardinal within thirty (30) days after completion of the applicable service. In no event shall Cardinal be liable for incidental or consequential damages, including, without limitation, business interruptions, loss of use, or loss of profits incurred by client, its subsidiaries, affiliates or successors arising out of or related to the performance of the services hereunder by Cardinal, regardless of whether such claim is based upon any of the above stated reasons or otherwise. Results relate only to the samples identified above. This report shall not be reproduced except in full with written approval of Cardinal Laboratories.

Celey D. Keene, Lab Director/Quality Manager



PHONE (575) 393-2326 ° 101 E. MARLAND ° HOBBS, NM 88240

Analytical Results For:

PIMA ENVIROMENTAL
SEBASTIAN OROZCO
1601 N TURNER STE. 500
HOBBS NM, 88240
Fax To:

Received: 03/26/2025
Reported: 03/27/2025
Project Name: GRAVE DIGGER ST. COM 3H TB
Project Number: 6-384
Project Location: SPUR ENERGY - EDDY CO NM

Sampling Date: 03/26/2025
Sampling Type: Soil
Sampling Condition: Cool & Intact
Sample Received By: Alyssa Parras

Sample ID: CSW 3 (H251787-08)

BTX 8021B		mg/kg		Analyzed By: JH					
Analyte	Result	Reporting Limit	Analyzed	Method Blank	BS	% Recovery	True Value QC	RPD	Qualifier
Benzene*	<0.050	0.050	03/26/2025	ND	1.80	90.2	2.00	0.490	
Toluene*	<0.050	0.050	03/26/2025	ND	1.96	97.8	2.00	0.864	
Ethylbenzene*	<0.050	0.050	03/26/2025	ND	1.92	95.9	2.00	1.57	
Total Xylenes*	<0.150	0.150	03/26/2025	ND	5.74	95.7	6.00	1.23	
Total BTX	<0.300	0.300	03/26/2025	ND					

Surrogate: 4-Bromofluorobenzene (PID) 105 % 71.5-134

Chloride, SM4500Cl-B		mg/kg		Analyzed By: AC						
Analyte	Result	Reporting Limit	Analyzed	Method Blank	BS	% Recovery	True Value QC	RPD	Qualifier	
Chloride	32.0	16.0	03/27/2025	ND	416	104	400	0.00		

TPH 8015M		mg/kg		Analyzed By: MS					
Analyte	Result	Reporting Limit	Analyzed	Method Blank	BS	% Recovery	True Value QC	RPD	Qualifier
GRO C6-C10*	<10.0	10.0	03/26/2025	ND	187	93.7	200	1.28	
DRO >C10-C28*	<10.0	10.0	03/26/2025	ND	188	94.1	200	0.538	
EXT DRO >C28-C36	<10.0	10.0	03/26/2025	ND					

Surrogate: 1-Chlorooctane 80.6 % 44.4-145

Surrogate: 1-Chlorooctadecane 79.1 % 40.6-153

Cardinal Laboratories

*=Accredited Analyte

PLEASE NOTE: Liability and Damages. Cardinal's liability and client's exclusive remedy for any claim arising, whether based in contract or tort, shall be limited to the amount paid by client for analyses. All claims, including those for negligence and any other cause whatsoever shall be deemed waived unless made in writing and received by Cardinal within thirty (30) days after completion of the applicable service. In no event shall Cardinal be liable for incidental or consequential damages, including, without limitation, business interruptions, loss of use, or loss of profits incurred by client, its subsidiaries, affiliates or successors arising out of or related to the performance of the services hereunder by Cardinal, regardless of whether such claim is based upon any of the above stated reasons or otherwise. Results relate only to the samples identified above. This report shall not be reproduced except in full with written approval of Cardinal Laboratories.

Celey D. Keene, Lab Director/Quality Manager



PHONE (575) 393-2326 ° 101 E. MARLAND ° HOBBS, NM 88240

Analytical Results For:

PIMA ENVIROMENTAL
SEBASTIAN OROZCO
1601 N TURNER STE. 500
HOBBS NM, 88240
Fax To:

Received: 03/26/2025
Reported: 03/27/2025
Project Name: GRAVE DIGGER ST. COM 3H TB
Project Number: 6-384
Project Location: SPUR ENERGY - EDDY CO NM

Sampling Date: 03/26/2025
Sampling Type: Soil
Sampling Condition: Cool & Intact
Sample Received By: Alyssa Parras

Sample ID: CSW 4 (H251787-09)

BTX 8021B		mg/kg		Analyzed By: JH					
Analyte	Result	Reporting Limit	Analyzed	Method Blank	BS	% Recovery	True Value QC	RPD	Qualifier
Benzene*	<0.050	0.050	03/26/2025	ND	1.80	90.2	2.00	0.490	
Toluene*	<0.050	0.050	03/26/2025	ND	1.96	97.8	2.00	0.864	
Ethylbenzene*	<0.050	0.050	03/26/2025	ND	1.92	95.9	2.00	1.57	
Total Xylenes*	<0.150	0.150	03/26/2025	ND	5.74	95.7	6.00	1.23	
Total BTX	<0.300	0.300	03/26/2025	ND					

Surrogate: 4-Bromofluorobenzene (PID) 106 % 71.5-134

Chloride, SM4500CI-B		mg/kg		Analyzed By: AC						
Analyte	Result	Reporting Limit	Analyzed	Method Blank	BS	% Recovery	True Value QC	RPD	Qualifier	
Chloride	<16.0	16.0	03/27/2025	ND	416	104	400	0.00		

TPH 8015M		mg/kg		Analyzed By: MS					
Analyte	Result	Reporting Limit	Analyzed	Method Blank	BS	% Recovery	True Value QC	RPD	Qualifier
GRO C6-C10*	<10.0	10.0	03/26/2025	ND	200	100	200	0.452	
DRO >C10-C28*	<10.0	10.0	03/26/2025	ND	197	98.6	200	1.29	
EXT DRO >C28-C36	<10.0	10.0	03/26/2025	ND					

Surrogate: 1-Chlorooctane 87.7 % 44.4-145

Surrogate: 1-Chlorooctadecane 81.6 % 40.6-153

Cardinal Laboratories

*=Accredited Analyte

PLEASE NOTE: Liability and Damages. Cardinal's liability and client's exclusive remedy for any claim arising, whether based in contract or tort, shall be limited to the amount paid by client for analyses. All claims, including those for negligence and any other cause whatsoever shall be deemed waived unless made in writing and received by Cardinal within thirty (30) days after completion of the applicable service. In no event shall Cardinal be liable for incidental or consequential damages, including, without limitation, business interruptions, loss of use, or loss of profits incurred by client, its subsidiaries, affiliates or successors arising out of or related to the performance of the services hereunder by Cardinal, regardless of whether such claim is based upon any of the above stated reasons or otherwise. Results relate only to the samples identified above. This report shall not be reproduced except in full with written approval of Cardinal Laboratories.

Celey D. Keene, Lab Director/Quality Manager



PHONE (575) 393-2326 ° 101 E. MARLAND ° HOBBS, NM 88240

Analytical Results For:

PIMA ENVIROMENTAL
 SEBASTIAN OROZCO
 1601 N TURNER STE. 500
 HOBBS NM, 88240
 Fax To:

Received: 03/26/2025
 Reported: 03/27/2025
 Project Name: GRAVE DIGGER ST. COM 3H TB
 Project Number: 6-384
 Project Location: SPUR ENERGY - EDDY CO NM

Sampling Date: 03/26/2025
 Sampling Type: Soil
 Sampling Condition: Cool & Intact
 Sample Received By: Alyssa Parras

Sample ID: CSW 5 (H251787-10)

BTX 8021B		mg/kg		Analyzed By: JH					
Analyte	Result	Reporting Limit	Analyzed	Method Blank	BS	% Recovery	True Value QC	RPD	Qualifier
Benzene*	<0.050	0.050	03/26/2025	ND	1.80	90.2	2.00	0.490	
Toluene*	<0.050	0.050	03/26/2025	ND	1.96	97.8	2.00	0.864	
Ethylbenzene*	<0.050	0.050	03/26/2025	ND	1.92	95.9	2.00	1.57	
Total Xylenes*	<0.150	0.150	03/26/2025	ND	5.74	95.7	6.00	1.23	
Total BTX	<0.300	0.300	03/26/2025	ND					

Surrogate: 4-Bromofluorobenzene (PID) 108 % 71.5-134

Chloride, SM4500CI-B		mg/kg		Analyzed By: AC						
Analyte	Result	Reporting Limit	Analyzed	Method Blank	BS	% Recovery	True Value QC	RPD	Qualifier	
Chloride	<16.0	16.0	03/27/2025	ND	416	104	400	0.00		

TPH 8015M		mg/kg		Analyzed By: MS					
Analyte	Result	Reporting Limit	Analyzed	Method Blank	BS	% Recovery	True Value QC	RPD	Qualifier
GRO C6-C10*	<10.0	10.0	03/26/2025	ND	200	100	200	0.452	
DRO >C10-C28*	<10.0	10.0	03/26/2025	ND	197	98.6	200	1.29	
EXT DRO >C28-C36	<10.0	10.0	03/26/2025	ND					

Surrogate: 1-Chlorooctane 88.4 % 44.4-145

Surrogate: 1-Chlorooctadecane 82.0 % 40.6-153

Cardinal Laboratories

*=Accredited Analyte

PLEASE NOTE: Liability and Damages. Cardinal's liability and client's exclusive remedy for any claim arising, whether based in contract or tort, shall be limited to the amount paid by client for analyses. All claims, including those for negligence and any other cause whatsoever shall be deemed waived unless made in writing and received by Cardinal within thirty (30) days after completion of the applicable service. In no event shall Cardinal be liable for incidental or consequential damages, including, without limitation, business interruptions, loss of use, or loss of profits incurred by client, its subsidiaries, affiliates or successors arising out of or related to the performance of the services hereunder by Cardinal, regardless of whether such claim is based upon any of the above stated reasons or otherwise. Results relate only to the samples identified above. This report shall not be reproduced except in full with written approval of Cardinal Laboratories.

Celey D. Keene, Lab Director/Quality Manager



PHONE (575) 393-2326 ° 101 E. MARLAND ° HOBBS, NM 88240

Analytical Results For:

PIMA ENVIROMENTAL
SEBASTIAN OROZCO
1601 N TURNER STE. 500
HOBBS NM, 88240
Fax To:

Received: 03/26/2025
Reported: 03/27/2025
Project Name: GRAVE DIGGER ST. COM 3H TB
Project Number: 6-384
Project Location: SPUR ENERGY - EDDY CO NM

Sampling Date: 03/26/2025
Sampling Type: Soil
Sampling Condition: Cool & Intact
Sample Received By: Alyssa Parras

Sample ID: BACKFILL (H251787-11)

BTEx 8021B		mg/kg		Analyzed By: JH						
Analyte	Result	Reporting Limit	Analyzed	Method Blank	BS	% Recovery	True Value QC	RPD	Qualifier	
Benzene*	<0.050	0.050	03/26/2025	ND	1.80	90.2	2.00	0.490		
Toluene*	<0.050	0.050	03/26/2025	ND	1.96	97.8	2.00	0.864		
Ethylbenzene*	<0.050	0.050	03/26/2025	ND	1.92	95.9	2.00	1.57		
Total Xylenes*	<0.150	0.150	03/26/2025	ND	5.74	95.7	6.00	1.23		
Total BTEx	<0.300	0.300	03/26/2025	ND						

Surrogate: 4-Bromofluorobenzene (PID) 106 % 71.5-134

Chloride, SM4500CI-B		mg/kg		Analyzed By: AC						
Analyte	Result	Reporting Limit	Analyzed	Method Blank	BS	% Recovery	True Value QC	RPD	Qualifier	
Chloride	<16.0	16.0	03/27/2025	ND	416	104	400	0.00		

TPH 8015M		mg/kg		Analyzed By: MS					
Analyte	Result	Reporting Limit	Analyzed	Method Blank	BS	% Recovery	True Value QC	RPD	Qualifier
GRO C6-C10*	<10.0	10.0	03/26/2025	ND	200	100	200	0.452	
DRO >C10-C28*	<10.0	10.0	03/26/2025	ND	197	98.6	200	1.29	
EXT DRO >C28-C36	<10.0	10.0	03/26/2025	ND					

Surrogate: 1-Chlorooctane 88.6 % 44.4-145

Surrogate: 1-Chlorooctadecane 82.2 % 40.6-153

Cardinal Laboratories

*=Accredited Analyte

PLEASE NOTE: Liability and Damages. Cardinal's liability and client's exclusive remedy for any claim arising, whether based in contract or tort, shall be limited to the amount paid by client for analyses. All claims, including those for negligence and any other cause whatsoever shall be deemed waived unless made in writing and received by Cardinal within thirty (30) days after completion of the applicable service. In no event shall Cardinal be liable for incidental or consequential damages, including, without limitation, business interruptions, loss of use, or loss of profits incurred by client, its subsidiaries, affiliates or successors arising out of or related to the performance of the services hereunder by Cardinal, regardless of whether such claim is based upon any of the above stated reasons or otherwise. Results relate only to the samples identified above. This report shall not be reproduced except in full with written approval of Cardinal Laboratories.

Celey D. Keene, Lab Director/Quality Manager

PHONE (575) 393-2326 • 101 E. MARLAND • HOBBS, NM 88240

Notes and Definitions

S-04	The surrogate recovery for this sample is outside of established control limits due to a sample matrix effect.
QM-07	The spike recovery was outside acceptance limits for the MS and/or MSD. The batch was accepted based on acceptable LCS recovery.
ND	Analyte NOT DETECTED at or above the reporting limit
RPD	Relative Percent Difference
**	Samples not received at proper temperature of 6°C or below.
***	Insufficient time to reach temperature.
-	Chloride by SM4500Cl-B does not require samples be received at or below 6°C Samples reported on an as received basis (wet) unless otherwise noted on report

Cardinal Laboratories

*=Accredited Analyte

PLEASE NOTE: Liability and Damages. Cardinal's liability and client's exclusive remedy for any claim arising, whether based in contract or tort, shall be limited to the amount paid by client for analyses. All claims, including those for negligence and any other cause whatsoever shall be deemed waived unless made in writing and received by Cardinal within thirty (30) days after completion of the applicable service. In no event shall Cardinal be liable for incidental or consequential damages, including, without limitation, business interruptions, loss of use, or loss of profits incurred by client, its subsidiaries, affiliates or successors arising out of or related to the performance of the services hereunder by Cardinal, regardless of whether such claim is based upon any of the above stated reasons or otherwise. Results relate only to the samples identified above. This report shall not be reproduced except in full with written approval of Cardinal Laboratories.

A handwritten signature in black ink, appearing to read "C. D. Keene", is written over a horizontal line.

Celey D. Keene, Lab Director/Quality Manager

Sante Fe Main Office
Phone: (505) 476-3441

General Information
Phone: (505) 629-6116

Online Phone Directory
<https://www.emnrd.nm.gov/ocd/contact-us>

State of New Mexico
Energy, Minerals and Natural Resources
Oil Conservation Division
1220 S. St Francis Dr.
Santa Fe, NM 87505

QUESTIONS

Action 465345

QUESTIONS

Operator: Spur Energy Partners LLC 9655 Katy Freeway Houston, TX 77024	OGRID: 328947
	Action Number: 465345
	Action Type: [C-141] Remediation Closure Request C-141 (C-141-v-Closure)

QUESTIONS

Prerequisites	
Incident ID (n#)	nAPP2506428606
Incident Name	NAPP2506428606 GRAVE DIGGER ST COM 3H TB @ 30-015-39151
Incident Type	Produced Water Release
Incident Status	Remediation Closure Report Received
Incident Well	[30-015-39151] GRAVE DIGGER STATE COM #003H

Location of Release Source	
<i>Please answer all the questions in this group.</i>	
Site Name	GRAVE DIGGER ST COM 3H TB
Date Release Discovered	03/02/2025
Surface Owner	State

Incident Details	
<i>Please answer all the questions in this group.</i>	
Incident Type	Produced Water Release
Did this release result in a fire or is the result of a fire	No
Did this release result in any injuries	No
Has this release reached or does it have a reasonable probability of reaching a watercourse	No
Has this release endangered or does it have a reasonable probability of endangering public health	No
Has this release substantially damaged or will it substantially damage property or the environment	No
Is this release of a volume that is or may with reasonable probability be detrimental to fresh water	No

Nature and Volume of Release	
<i>Material(s) released, please answer all that apply below. Any calculations or specific justifications for the volumes provided should be attached to the follow-up C-141 submission.</i>	
Crude Oil Released (bbls) Details	Not answered.
Produced Water Released (bbls) Details	Cause: Equipment Failure Pump Produced Water Released: 63 BBL Recovered: 63 BBL Lost: 0 BBL.
Is the concentration of chloride in the produced water >10,000 mg/l	Yes
Condensate Released (bbls) Details	Not answered.
Natural Gas Vented (Mcf) Details	Not answered.
Natural Gas Flared (Mcf) Details	Not answered.
Other Released Details	Not answered.
Are there additional details for the questions above (i.e. any answer containing Other, Specify, Unknown, and/or Fire, or any negative lost amounts)	POC FAILED TO TURN ON WTP RESULTING IN A PW RELEASE INTO LINED CONTAINMENT

Sante Fe Main Office
Phone: (505) 476-3441

General Information
Phone: (505) 629-6116

Online Phone Directory
<https://www.emnrd.nm.gov/ocd/contact-us>

State of New Mexico
Energy, Minerals and Natural Resources
Oil Conservation Division
1220 S. St Francis Dr.
Santa Fe, NM 87505

QUESTIONS, Page 2

Action 465345

QUESTIONS (continued)

Operator: Spur Energy Partners LLC 9655 Katy Freeway Houston, TX 77024	OGRID: 328947
	Action Number: 465345
	Action Type: [C-141] Remediation Closure Request C-141 (C-141-v-Closure)

QUESTIONS

Nature and Volume of Release (continued)	
Is this a gas only submission (i.e. only significant Mcf values reported)	No, according to supplied volumes this does not appear to be a "gas only" report.
Was this a major release as defined by Subsection A of 19.15.29.7 NMAC	Yes
Reasons why this would be considered a submission for a notification of a major release	From paragraph A. "Major release" determine using: (1) an unauthorized release of a volume, excluding gases, of 25 barrels or more.
With the implementation of the 19.15.27 NMAC (05/25/2021), venting and/or flaring of natural gas (i.e. gas only) are to be submitted on the C-129 form.	

Initial Response

The responsible party must undertake the following actions immediately unless they could create a safety hazard that would result in injury.

The source of the release has been stopped	True
The impacted area has been secured to protect human health and the environment	True
Released materials have been contained via the use of berms or dikes, absorbent pads, or other containment devices	True
All free liquids and recoverable materials have been removed and managed appropriately	True
If all the actions described above have not been undertaken, explain why	N/A

Per Paragraph (4) of Subsection B of 19.15.29.8 NMAC the responsible party may commence remediation immediately after discovery of a release. If remediation has begun, please prepare and attach a narrative of actions to date in the follow-up C-141 submission. If remedial efforts have been successfully completed or if the release occurred within a lined containment area (see Subparagraph (a) of Paragraph (5) of Subsection A of 19.15.29.11 NMAC), please prepare and attach all information needed for closure evaluation in the follow-up C-141 submission.

I hereby certify that the information given above is true and complete to the best of my knowledge and understand that pursuant to OCD rules and regulations all operators are required to report and/or file certain release notifications and perform corrective actions for releases which may endanger public health or the environment. The acceptance of a C-141 report by the OCD does not relieve the operator of liability should their operations have failed to adequately investigate and remediate contamination that pose a threat to groundwater, surface water, human health or the environment. In addition, OCD acceptance of a C-141 report does not relieve the operator of responsibility for compliance with any other federal, state, or local laws and/or regulations.

I hereby agree and sign off to the above statement	Name: Katherine Purvis Title: EHS Coordinator Email: katherine.purvis@spurenergy.com Date: 03/05/2025
--	--

Sante Fe Main Office
Phone: (505) 476-3441

General Information
Phone: (505) 629-6116

Online Phone Directory
<https://www.emnrd.nm.gov/ocd/contact-us>

State of New Mexico
Energy, Minerals and Natural Resources
Oil Conservation Division
1220 S. St Francis Dr.
Santa Fe, NM 87505

QUESTIONS, Page 3

Action 465345

QUESTIONS (continued)

Operator: Spur Energy Partners LLC 9655 Katy Freeway Houston, TX 77024	OGRID:
	328947
	Action Number:
	465345
Action Type:	
[C-141] Remediation Closure Request C-141 (C-141-v-Closure)	

QUESTIONS

Site Characterization	
<i>Please answer all the questions in this group (only required when seeking remediation plan approval and beyond). This information must be provided to the appropriate district office no later than 90 days after the release discovery date.</i>	
What is the shallowest depth to groundwater beneath the area affected by the release in feet below ground surface (ft bgs)	Between 100 and 500 (ft.)
What method was used to determine the depth to ground water	U.S. Geological Survey
Did this release impact groundwater or surface water	No
What is the minimum distance, between the closest lateral extents of the release and the following surface areas:	
A continuously flowing watercourse or any other significant watercourse	Between 1 and 5 (mi.)
Any lakebed, sinkhole, or playa lake (measured from the ordinary high-water mark)	Greater than 5 (mi.)
An occupied permanent residence, school, hospital, institution, or church	Between 1 and 5 (mi.)
A spring or a private domestic fresh water well used by less than five households for domestic or stock watering purposes	Greater than 5 (mi.)
Any other fresh water well or spring	Between ½ and 1 (mi.)
Incorporated municipal boundaries or a defined municipal fresh water well field	Greater than 5 (mi.)
A wetland	Between 1 and 5 (mi.)
A subsurface mine	Greater than 5 (mi.)
An (non-karst) unstable area	Zero feet, overlying, or within area
Categorize the risk of this well / site being in a karst geology	High
A 100-year floodplain	Between ½ and 1 (mi.)
Did the release impact areas not on an exploration, development, production, or storage site	Yes

Remediation Plan	
<i>Please answer all the questions that apply or are indicated. This information must be provided to the appropriate district office no later than 90 days after the release discovery date.</i>	
Requesting a remediation plan approval with this submission	Yes
<i>Attach a comprehensive report demonstrating the lateral and vertical extents of soil contamination associated with the release have been determined, pursuant to 19.15.29.11 NMAC and 19.15.29.13 NMAC.</i>	
Have the lateral and vertical extents of contamination been fully delineated	Yes
Was this release entirely contained within a lined containment area	No
Soil Contamination Sampling: (Provide the highest observable value for each, in milligrams per kilograms.)	
Chloride (EPA 300.0 or SM4500 Cl B)	2440
TPH (GRO+DRO+MRO) (EPA SW-846 Method 8015M)	0
GRO+DRO (EPA SW-846 Method 8015M)	0
BTEX (EPA SW-846 Method 8021B or 8260B)	0
Benzene (EPA SW-846 Method 8021B or 8260B)	0
<i>Per Subsection B of 19.15.29.11 NMAC unless the site characterization report includes completed efforts at remediation, the report must include a proposed remediation plan in accordance with 19.15.29.12 NMAC, which includes the anticipated timelines for beginning and completing the remediation.</i>	
On what estimated date will the remediation commence	03/20/2025
On what date will (or did) the final sampling or liner inspection occur	03/26/2025
On what date will (or was) the remediation complete(d)	04/01/2025
What is the estimated surface area (in square feet) that will be reclaimed	1000
What is the estimated volume (in cubic yards) that will be reclaimed	20
What is the estimated surface area (in square feet) that will be remediated	1000
What is the estimated volume (in cubic yards) that will be remediated	20
<i>These estimated dates and measurements are recognized to be the best guess or calculation at the time of submission and may (be) change(d) over time as more remediation efforts are completed.</i>	
<i>The OCD recognizes that proposed remediation measures may have to be minimally adjusted in accordance with the physical realities encountered during remediation. If the responsible party has any need to significantly deviate from the remediation plan proposed, then it should consult with the division to determine if another remediation plan submission is required.</i>	

Sante Fe Main Office
Phone: (505) 476-3441

General Information
Phone: (505) 629-6116

Online Phone Directory
<https://www.emnrd.nm.gov/ocd/contact-us>

State of New Mexico
Energy, Minerals and Natural Resources
Oil Conservation Division
1220 S. St Francis Dr.
Santa Fe, NM 87505

QUESTIONS, Page 4

Action 465345

QUESTIONS (continued)

Operator: Spur Energy Partners LLC 9655 Katy Freeway Houston, TX 77024	OGRID: 328947
	Action Number: 465345
	Action Type: [C-141] Remediation Closure Request C-141 (C-141-v-Closure)

QUESTIONS

Remediation Plan (continued)	
<i>Please answer all the questions that apply or are indicated. This information must be provided to the appropriate district office no later than 90 days after the release discovery date.</i>	
This remediation will (or is expected to) utilize the following processes to remediate / reduce contaminants:	
<i>(Select all answers below that apply.)</i>	
(Ex Situ) Excavation and off-site disposal (i.e. dig and haul, hydrovac, etc.)	Yes
Which OCD approved facility will be used for off-site disposal	LEA LAND LANDFILL [fEEM0112342028]
OR which OCD approved well (API) will be used for off-site disposal	Not answered.
OR is the off-site disposal site, to be used, out-of-state	Not answered.
OR is the off-site disposal site, to be used, an NMED facility	Not answered.
(Ex Situ) Excavation and on-site remediation (i.e. On-Site Land Farms)	Not answered.
(In Situ) Soil Vapor Extraction	Not answered.
(In Situ) Chemical processing (i.e. Soil Shredding, Potassium Permanganate, etc.)	Not answered.
(In Situ) Biological processing (i.e. Microbes / Fertilizer, etc.)	Not answered.
(In Situ) Physical processing (i.e. Soil Washing, Gypsum, Disking, etc.)	Not answered.
Ground Water Abatement pursuant to 19.15.30 NMAC	Not answered.
OTHER (Non-listed remedial process)	Not answered.
<i>Per Subsection B of 19.15.29.11 NMAC unless the site characterization report includes completed efforts at remediation, the report must include a proposed remediation plan in accordance with 19.15.29.12 NMAC, which includes the anticipated timelines for beginning and completing the remediation.</i>	
I hereby certify that the information given above is true and complete to the best of my knowledge and understand that pursuant to OCD rules and regulations all operators are required to report and/or file certain release notifications and perform corrective actions for releases which may endanger public health or the environment. The acceptance of a C-141 report by the OCD does not relieve the operator of liability should their operations have failed to adequately investigate and remediate contamination that pose a threat to groundwater, surface water, human health or the environment. In addition, OCD acceptance of a C-141 report does not relieve the operator of responsibility for compliance with any other federal, state, or local laws and/or regulations.	
I hereby agree and sign off to the above statement	Name: Katherine Purvis Title: EHS Coordinator Email: katherine.purvis@spurenergy.com Date: 05/20/2025
<i>The OCD recognizes that proposed remediation measures may have to be minimally adjusted in accordance with the physical realities encountered during remediation. If the responsible party has any need to significantly deviate from the remediation plan proposed, then it should consult with the division to determine if another remediation plan submission is required.</i>	

Sante Fe Main Office
Phone: (505) 476-3441

General Information
Phone: (505) 629-6116

Online Phone Directory
<https://www.emnrd.nm.gov/ocd/contact-us>

State of New Mexico
Energy, Minerals and Natural Resources
Oil Conservation Division
1220 S. St Francis Dr.
Santa Fe, NM 87505

QUESTIONS, Page 5

Action 465345

QUESTIONS (continued)

Operator: Spur Energy Partners LLC 9655 Katy Freeway Houston, TX 77024	OGRID: 328947
	Action Number: 465345
	Action Type: [C-141] Remediation Closure Request C-141 (C-141-v-Closure)

QUESTIONS

Deferral Requests Only	
Only answer the questions in this group if seeking a deferral upon approval this submission. Each of the following items must be confirmed as part of any request for deferral of remediation.	
Requesting a deferral of the remediation closure due date with the approval of this submission	No

Sante Fe Main Office
Phone: (505) 476-3441

General Information
Phone: (505) 629-6116

Online Phone Directory
<https://www.emnrd.nm.gov/ocd/contact-us>

State of New Mexico
Energy, Minerals and Natural Resources
Oil Conservation Division
1220 S. St Francis Dr.
Santa Fe, NM 87505

QUESTIONS, Page 6

Action 465345

QUESTIONS (continued)

Operator: Spur Energy Partners LLC 9655 Katy Freeway Houston, TX 77024	OGRID: 328947
	Action Number: 465345
	Action Type: [C-141] Remediation Closure Request C-141 (C-141-v-Closure)

QUESTIONS

Sampling Event Information	
Last sampling notification (C-141N) recorded	444730
Sampling date pursuant to Subparagraph (a) of Paragraph (1) of Subsection D of 19.15.29.12 NMAC	03/26/2025
What was the (estimated) number of samples that were to be gathered	10
What was the sampling surface area in square feet	1250

Remediation Closure Request	
<i>Only answer the questions in this group if seeking remediation closure for this release because all remediation steps have been completed.</i>	
Requesting a remediation closure approval with this submission	Yes
Have the lateral and vertical extents of contamination been fully delineated	Yes
Was this release entirely contained within a lined containment area	No
All areas reasonably needed for production or subsequent drilling operations have been stabilized, returned to the sites existing grade, and have a soil cover that prevents ponding of water, minimizing dust and erosion	Yes
What was the total surface area (in square feet) remediated	1000
What was the total volume (cubic yards) remediated	20
All areas not reasonably needed for production or subsequent drilling operations have been reclaimed to contain a minimum of four feet of non-waste contain earthen material with concentrations less than 600 mg/kg chlorides, 100 mg/kg TPH, 50 mg/kg BTEX, and 10 mg/kg Benzene	Yes
What was the total surface area (in square feet) reclaimed	1000
What was the total volume (in cubic yards) reclaimed	20
Summarize any additional remediation activities not included by answers (above)	The lined containment was power-washed, and all standing fluids were recovered using a vacuum truck. Following cleanup, a liner inspection was conducted and confirmed that the containment liner maintained its integrity. The impacted area outside the lined containment was excavated, confirmation samples were collected, and the area was backfilled with clean material
<i>The responsible party must attach information demonstrating they have complied with all applicable closure requirements and any conditions or directives of the OCD. This demonstration should be in the form of a comprehensive report (in .pdf format) including a scaled site map, sampling diagrams, relevant field notes, photographs of any excavation prior to backfilling, laboratory data including chain of custody documents of final sampling, and a narrative of the remedial activities. Refer to 19.15.29.12 NMAC.</i>	
I hereby certify that the information given above is true and complete to the best of my knowledge and understand that pursuant to OCD rules and regulations all operators are required to report and/or file certain release notifications and perform corrective actions for releases which may endanger public health or the environment. The acceptance of a C-141 report by the OCD does not relieve the operator of liability should their operations have failed to adequately investigate and remediate contamination that pose a threat to groundwater, surface water, human health or the environment. In addition, OCD acceptance of a C-141 report does not relieve the operator of responsibility for compliance with any other federal, state, or local laws and/or regulations. The responsible party acknowledges they must substantially restore, reclaim, and re-vegetate the impacted surface area to the conditions that existed prior to the release or their final land use in accordance with 19.15.29.13 NMAC including notification to the OCD when reclamation and re-vegetation are complete.	
I hereby agree and sign off to the above statement	Name: Katherine Purvis Title: EHS Coordinator Email: katherine.purvis@spurenergy.com Date: 05/20/2025

Sante Fe Main Office
Phone: (505) 476-3441

General Information
Phone: (505) 629-6116

Online Phone Directory
<https://www.emnrd.nm.gov/ocd/contact-us>

State of New Mexico
Energy, Minerals and Natural Resources
Oil Conservation Division
1220 S. St Francis Dr.
Santa Fe, NM 87505

QUESTIONS, Page 7

Action 465345

QUESTIONS (continued)

Operator: Spur Energy Partners LLC 9655 Katy Freeway Houston, TX 77024	OGRID: 328947
	Action Number: 465345
	Action Type: [C-141] Remediation Closure Request C-141 (C-141-v-Closure)

QUESTIONS

Reclamation Report	
Only answer the questions in this group if all reclamation steps have been completed.	
Requesting a reclamation approval with this submission	No

Sante Fe Main Office
Phone: (505) 476-3441

General Information
Phone: (505) 629-6116

Online Phone Directory
<https://www.emnrd.nm.gov/ocd/contact-us>

State of New Mexico
Energy, Minerals and Natural Resources
Oil Conservation Division
1220 S. St Francis Dr.
Santa Fe, NM 87505

CONDITIONS

Action 465345

CONDITIONS

Operator: Spur Energy Partners LLC 9655 Katy Freeway Houston, TX 77024	OGRID: 328947
	Action Number: 465345
	Action Type: [C-141] Remediation Closure Request C-141 (C-141-v-Closure)

CONDITIONS

Created By	Condition	Condition Date
scott.rodgers	This Remediation Closure Report is approved. Areas reasonably needed for production or subsequent drilling operations will need to be reclaimed and revegetated as soon as they are no longer reasonably needed. A report for reclamation and revegetation will need to be submitted and approved prior to this incident receiving the final status of "Restoration Complete".	5/30/2025
scott.rodgers	The reclamation report will need to include: Executive Summary of the reclamation activities; Scaled Site Map including sampling locations; Analytical results including, but not limited to, results showing that any remaining impacts meet the reclamation standards and results to prove the backfill is non-waste containing; At least one (1) representative 5-point composite sample will need to be collected from the backfill material that will be used for the reclamation of the top four feet of the excavation. The OCD reserves the right to request additional sampling if needed; pictures of the backfilled areas showing that the area is back, as nearly as practical, to the original condition or the final land use and maintain those areas to control dust and minimize erosion to the extent practical; pictures of the top layer, which is either the background thickness of topsoil or one foot of suitable material to establish vegetation at the site, whichever is greater; and a revegetation plan.	5/30/2025