



LEMANS 2419 ST COM 304H

nAPP2506641719

PREPARED BY SAPEC-ECO, LLC.

PREPARED FOR PERMIAN RESOURCES OPERATING,  
LLC.

July 21, 2025

ATTN: NMOCD District 2  
621 First St.  
Artesia, NM 88210

RE: **Remediation Closure Report**  
**Lemans 2419 St Com 304H**  
**API # 30-015-49939**  
**GPS: Latitude 32.55525 Longitude -103.345217 NAD83**  
**ULSTR – E – 24 – 20S – 26E Eddy County, NM**  
**NMOCD Incident ID nAPP2506641719**

This crude oil release was discovered by the operator on February 21, 2025. The initial Notification of Release and C-141 were submitted and approved by NMOCD on March 7, 2025 (OCD Permitting: Action Status – Application IDs 440349 & 440368). This incident was assigned Incident ID nAPP2506641719 by the New Mexico Oil Conservation Division (NMOCD).

### Release Information

**nAPP2506641719:** On February 21, 2025, an unknown equipment failure occurred causing a release of approximately 3.6 barrels (bbls) of crude oil. The fluid was released out of the flare which resulted in a fire. Approximately 0 bbls of fluid were recovered as the fire consumed them and eventually put itself out.

### Site Characterization

The Lemans 2419 St Com 304H (Lemans) is located approximately nine (9) miles northwest of Carlsbad, NM. This spill site is in Unit E, Section 24, Township 20S, Range 26E, Latitude 32.55525 Longitude -103.345217, Eddy County, NM. It can be accessed by a lease road that bears entry from the east. From the intersection of Highway 285 and Capitan Reef Road in Eddy County northwest of Carlsbad, New Mexico, travel north on Capitan Reef Road for approximately 4.5 miles, turn east on an unnamed lease road for approximately 0.45 miles, curve south for approximately 0.58 miles, turn west for approximately 700 feet into location. A Location Map can be found in Figure 5.

Per the New Mexico Bureau of Geology and Mineral Resources, the geology in this area is Yates and Tansill Formations: Sandstone, siltstone, limestone, dolomite, and anhydrite. A Geologic Unit Map can be found in Appendix B.

The soil in this area is made up of Gypsum land-Cottonwood complex, 0 to 3 percent slopes according to the United States Department of Agriculture Natural Resources Conservation Service soil survey (Appendix B). The drainage class in this area is well drained. There is a high potential for karst geology to be present around the Lemans (Figure 3). Reference Figure 4 for a Topographic Map.

A desktop review of the Lemans was performed and found to not be within range of any Special Status Plant or Wildlife Species. A Special Status Plant/Wildlife Map can be found in Figure 6.

According to the New Mexico Office of the State Engineer, depth to the nearest groundwater in this area is 105 feet below grade surface (bgs). This data was recorded from RA-04908, in November of 1963, which is located approximately 0.74 miles away from the Lemans. According to the United States Geological Survey, well water data from USGS 323309104211201 20S.26E.26.21111 records depth to the nearest groundwater at 91 feet bgs, with the last gauge being conducted in 2017. This well is approximately 0.52 miles southwest of the Lemans. See Appendix A for referenced Water Surveys and Water-Related Maps.

The nearest surface water body is the Pecos River located approximately 1.29 miles southwest of this site. The U.S. Fish and Wildlife Service National Wetlands Inventory shows the nearest wetland to be a Riverine approximately 0.33 miles to the west of this area. According to Fema's National Flood Hazard Layer search, the Lemans is situated in Zone X – Area of Minimal Flood Hazard.

The closure criteria for all remediation at the Lemans will be classified under the less than 50-foot depth to groundwater section of Table 1 19.15.29.12 NMAC. The regulatory limits are as follows: Chlorides should be less than 600 mg/kg, TPH (GRO+DRO+ORO) should be less than 100 mg/kg, BTEX should be less than 50 mg/kg, and Benzene should be less than 10 mg/kg.

### **Remediation Activities**

On March 21, 2025, Wild West Services LLC mobilized personnel and equipment to the site to begin excavating the release area. The total area of the excavation measured approximately 1,500 square feet, on and off the pad, and was excavated to a depth of approximately 6" bgs. The total amount of soil removed was approximately 20 cubic yards.

On March 26, 2025, after submitting a 48-hour notification to the NMOCD for a confirmation sampling event, Saptec personnel mobilized to the site to collect the confirmation samples. Forty (40) subsamples were collected from the base of the excavation to form eight (8) 5-point composite samples. Twenty (20) subsamples were collected from the walls of the excavation to form four (4) 5-point composite samples. These samples were collected from a depth 6" bgs. A total of twelve (12) composite samples were immediately placed in a cooler with ice, then prepared and delivered to Envirotech Analytical Laboratories for official analysis of all constituents listed in Table 1 19.15.29.12 NMAC. A Confirmation Sample Map can be referenced in Figure 1. The laboratory results of this sampling event can be seen in the Data Table in Figure 2. A complete Laboratory Report can be found in Appendix E.

On April 4, 2025, the analytical report was received and verified all sample results are under the regulatory limits as per the less than 50-foot depth to groundwater section of Table 1 19.15.29.12 NMAC.

On April 7, 2025, Wild West personnel returned to the site to backfill the excavation with clean, like material from the nearest available caliche pit location.

### **Approval Request**

Based on the laboratory results, the contamination levels represented in all sample points are under regulatory limits according to the closure criteria outlined in the less than 50-foot depth to groundwater section of Table 1 19.15.29.12 NMAC. Permian respectfully requests that this remediation closure report be approved by the NMOCD for incident ID nAPP2506641719. Photographic Documentation can be seen in Appendix D. Permian understands that reclamation of this pad area, once it is no longer needed for production or subsequent drilling operations, will require an approved reclamation plan addressing a minimum of four feet of non-waste containing earthen material, followed by an approved revegetation report after proper vegetation growth has been confirmed. Permian will reclaim the pasture area by preparing and reseeding, following the completion of all remediation activities.

### **Countermeasures Due to Denied Closure Report**

On May 7, 2025, the NMOCD denied the submitted closure report. The reasons for the denial and responses to those reasons are outlined below.

Remediation closure denied for the following:

1) In the remediation summary you write: "Forty (40) subsamples were collected from the base of the excavation then combined to form eight (8) 5-point composite samples." Explain this process.

The environmental technician measures off an area at 200 square feet. Then plots 5 spots within that area to collect the subsamples from. The subsamples are collected, then combined to create the 5-point composite sample for that specific 200 square foot area. This method is repeated for every 200 square foot area. In this particular instance, one of the areas is 100 square feet.

2) On the Chain of Custody all confirmation samples are grab samples. Per 19.15.29.12(D) NMAC the remediated areas must be tested for contamination with representative five-point composite samples from the walls and base. Explain.

This was a mistake, an oversight by the environmental technician and project manager. The correct designation should be (C) for composite samples, to represent what was collected from the excavation.

3) A C-141N was submitted on 3/24/25 to collect samples on 3/26/25. The chain of custody for all confirmation samples says they were collected on 3/27/25 however the date was changed by the laboratory to 3/26/25. Notes from the laboratory say: "04/04/25 - Client changed the sample date on all samples (see COC)." Explain.

As the environmental technician was out on site after hours completing this sampling event, the time window for dropping the samples off at the lab had already closed for the day. The technician finished collecting and jarring the samples then put them on ice. The samples were not able to be delivered to the lab the next day. The technician delivered the samples to the lab on 3/28/25 and mistakenly wrote 3/27 on the COCs instead of 3/26.

4) On pg. 3 you write "Permian will reclaim the pasture area by preparing and reseeding, following the completion of all remediation activities." Was the pasture area addressed?

The pasture area was reclaimed and reseeded. Excess seed left on the surface can be seen in photos.

5) As this release occurred both on and off pad, the remediation photographs provided should include captions describing what areas are being viewed, including the direction, dates taken and sample points shown.

Photo log has been edited. More pictures were found and added. Moving forward, photos will be taken with GPS/Time-Stamp/Compass apps.

6) Under the Site Characterization portion of the C-141 application, update the minimum distances to the following upon resubmittal: any other significant watercourse (1000 ft -1/2 mile to the W). Refer to topographic map on pg. 8.

Completed.

Submit updated remediation closure report to the OCD by 8/5/25.

The Confirmation Sample Map included as Figure 1 has been corrected to reflect the proper release area and confirmation sample points. The previous map needed to be changed after the excavation/scrape was performed but was not. Also included for reference is a Sample Point GPS Sheet which provides specific GPS locations for each subsample that was collected. Unfortunately, photos were not taken of each subsample location.

On July 10, 2025, Wild West personnel returned to the site to collect samples from the backfill used in the excavation. Two (2) 5-point composite soil samples were collected from the surface of the backfilled area. These samples were put on ice, prepared, then delivered to Cardinal Laboratories for official analysis of all constituents listed in Table 1 19.15.29.12 NMAC. The results of this analysis can be found in the Data Tables provided in Figure 2.

On July 17, 2025, the analytical report was received and verified the sample results for the backfill material are under the regulatory limits of the less than 50-foot depth to groundwater section of Table 1.

#### **Preparation and Seeding**

Preparation of the area included adding topsoil and contouring as much as possible to its former status. The prepared areas were seeded with the NMSLO-approved seed mixture for Loamy (L) sites (Appendix B). Within 30 days of completion of reclamation activities, the seed was applied using hand broadcast methods at double seed application quantities as prescribed by NMSLO Mix data sheets. The seed mixture was free of noxious weeds.

Should you have any questions or need additional information, please feel free to contact:

Permian Resources Operating, LLC – Matt Taylor at (575) 408-3638 or [matthew.taylor@permianres.com](mailto:matthew.taylor@permianres.com).

Sapeco-Eco, LLC. – Tom Bynum at (580) 748-1613 or [tombynum@sapeco-eco.com](mailto:tombynum@sapeco-eco.com).

#### **Attachments**

Figures:

- 1- Corrected Confirmation Sample Map
- 2- Data Tables
- 3- Sample Point GPS Sheet
- 4- Karst Map
- 5- Topographic Map
- 6- Location Map
- 7- Special Status Plant/Wildlife Map

Appendices:

Appendix A – Water Surveys & Water-Related Maps

Appendix B – Soil Survey & Geological Data

Appendix C – 48-Hour Notification & NMOCD Correspondence

Appendix D – Photographic Documentation

Appendix E – Laboratory Reports



## ***Figures:***

1 – Corrected Confirmation Sample Map

2 – Data Tables

3 – Sample Point GPS Sheet

4 – Karst Map

5 – Topographic Map

6 – Location Map

7 – Special Status Plant/Wildlife Map

# Lemans 2419 St Com 304H

Permian Resources











API #30-015-49939

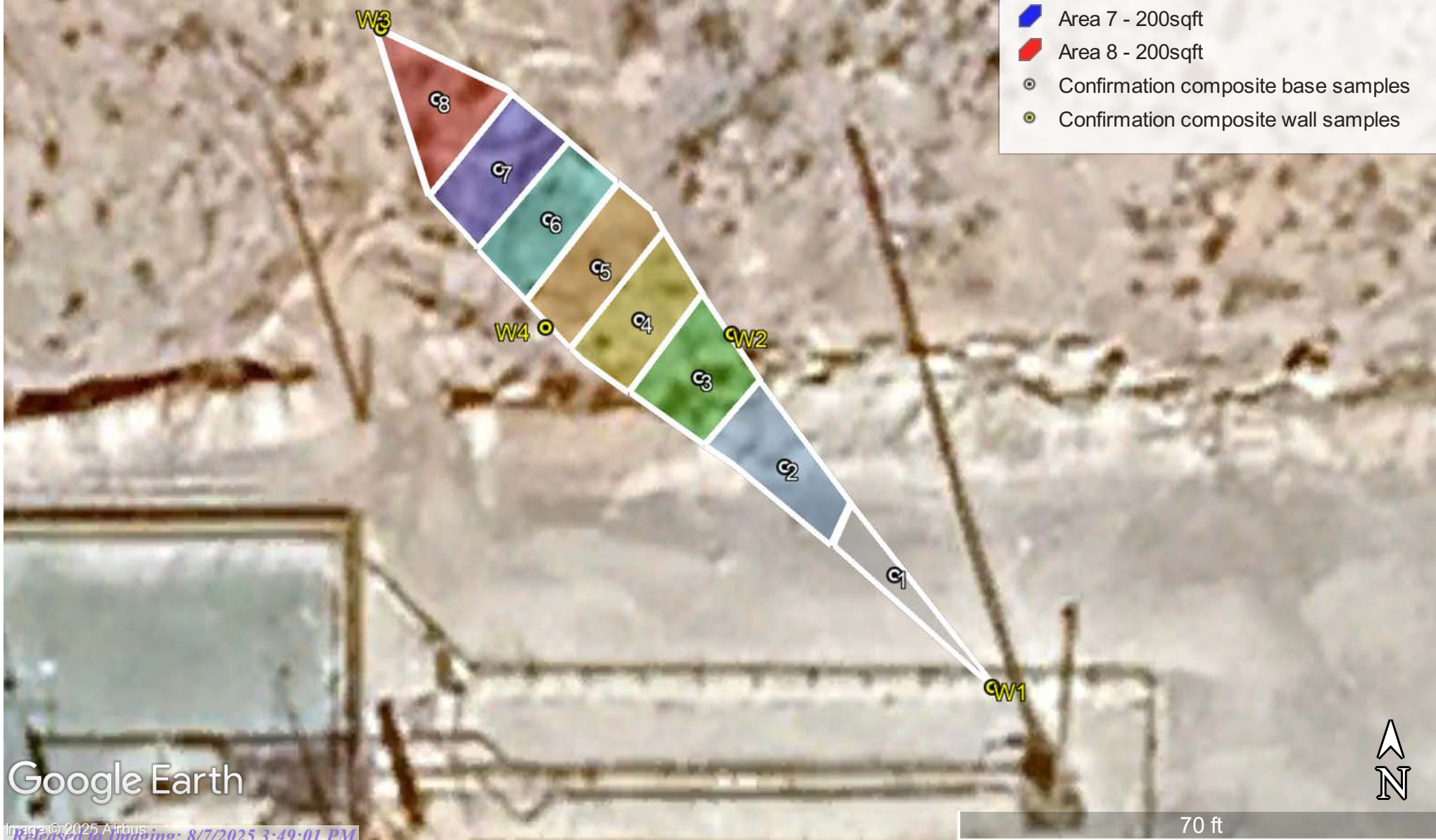
Eddy County, NM

nAPP2506641719

Corrected Confirmation Sample Map

## Legend

-  Area 1 - 100sqft
-  Area 2 - 200sqft
-  Area 3 - 200sqft
-  Area 4 - 200sqft
-  Area 5 - 200sqft
-  Area 6 - 200sqft
-  Area 7 - 200sqft
-  Area 8 - 200sqft
-  Confirmation composite base samples
-  Confirmation composite wall samples



NMOCD Table 1 Closure Criteria 19.15.29 NMAC (Depth to Groundwater is <50')								
Permian Resources - Lemans 2419 St Com 304H - nAPP2506641719								
Date: 3/26/2025		NM Approved Laboratory Results						
Sample ID	Depth (BGS)	BTEX mg/kg	Benzene mg/kg	GRO mg/kg	DRO mg/kg	ORO mg/kg	TPH mg/kg	CI mg/kg
1-6"	6"	ND	ND	ND	ND	ND	ND	16
2-6"	6"	ND	ND	ND	ND	ND	ND	16
3-6"	6"	ND	ND	ND	ND	ND	ND	16
4-6"	6"	ND	ND	ND	ND	ND	ND	16
5-6"	6"	ND	ND	ND	ND	ND	ND	16
6-6"	6"	ND	ND	ND	ND	ND	ND	32
7-6"	6"	ND	ND	ND	ND	ND	ND	16
8-6"	6"	ND	ND	ND	ND	ND	ND	16
W1-6"	6"	ND	ND	ND	ND	ND	ND	16
W2-6"	6"	ND	ND	ND	ND	ND	ND	32
W3-6"	6"	ND	ND	ND	ND	ND	ND	32
W4-6"	6"	ND	ND	ND	ND	ND	ND	16

NMOCD Table 1 Closure Criteria 19.15.29 NMAC (Depth to Groundwater is <50')								
Permian Resources - Lemans 2419 St Com 304H - nAPP2506641719								
Date: 7/10/2025		NM Approved Laboratory Results						
Sample ID	Depth (BGS)	BTEX mg/kg	Benzene mg/kg	GRO mg/kg	DRO mg/kg	ORO mg/kg	TPH mg/kg	CI mg/kg
Backfill 1	0'	ND	ND	ND	ND	ND	ND	ND
Backfill 2	0'	ND	ND	ND	ND	ND	ND	ND




<b>Sample Point 1</b>	Latitude	Longitude	<b>Sample Point 7</b>	Latitude	Longitude
Subsample A	32.555295	-104.345081	Subsample A	32.555504	-104.345281
Subsample B	32.555318	-104.345105	Subsample B	32.555517	-104.345298
Subsample C	32.555339	-104.345128	Subsample C	32.555495	-104.345304
Subsample D	32.555347	-104.345145	Subsample D	32.555484	-104.345331
Subsample E	32.555358	-104.34514	Subsample E	32.555469	-104.345314
<b>Sample Point 2</b>			<b>Sample Point 8</b>		
Subsample A	32.555352	-104.345152	Subsample A	32.555494	-104.345335
Subsample B	32.555363	-104.345145	Subsample B	32.555521	-104.345309
Subsample C	32.555377	-104.345172	Subsample C	32.555515	-104.345327
Subsample D	32.555387	-104.345199	Subsample D	32.555528	-104.345341
Subsample E	32.555402	-104.345183	Subsample E	32.555543	-104.345356
<b>Sample Point 3</b>			<b>Sample Point W1</b>		
Subsample A	32.555393	-104.34521	Subsample A	32.555288	-104.345071
Subsample B	32.555411	-104.345192	Subsample B	32.555332	-104.345112
Subsample C	32.555412	-104.345212	Subsample C	32.555346	-104.34515
Subsample D	32.555408	-104.345233	Subsample D	32.555375	-104.345151
Subsample E	32.555433	-104.345211	Subsample E	32.555385	-104.345209
<b>Sample Point 4</b>			<b>Sample Point W2</b>		
Subsample A	32.555414	-104.345246	Subsample A	32.555422	-104.345193
Subsample B	32.555424	-104.345262	Subsample B	32.555453	-104.345216
Subsample C	32.555435	-104.34524	Subsample C	32.555479	-104.345237
Subsample D	32.555444	-104.345218	Subsample D	32.555496	-104.345261
Subsample E	32.555458	-104.34523	Subsample E	32.555513	-104.345286
<b>Sample Point 5</b>			<b>Sample Point W3</b>		
Subsample A	32.555469	-104.345237	Subsample A	32.555535	-104.345325
Subsample B	32.55548	-104.345249	Subsample B	32.555548	-104.345361
Subsample C	32.555458	-104.345259	Subsample C	32.555508	-104.345346
Subsample D	32.555432	-104.345272	Subsample D	32.555483	-104.345336
Subsample E	32.555442	-104.345283	Subsample E	32.555471	-104.345322
<b>Sample Point 6</b>			<b>Sample Point W4</b>		
Subsample A	32.555451	-104.345293	Subsample A	32.555451	-104.345302
Subsample B	32.555462	-104.345307	Subsample B	32.555432	-104.345281
Subsample C	32.555473	-104.345284	Subsample C	32.555413	-104.345256
Subsample D	32.555487	-104.345257	Subsample D	32.555396	-104.345226
Subsample E	32.555497	-104.345272	Subsample E	32.555372	-104.345186

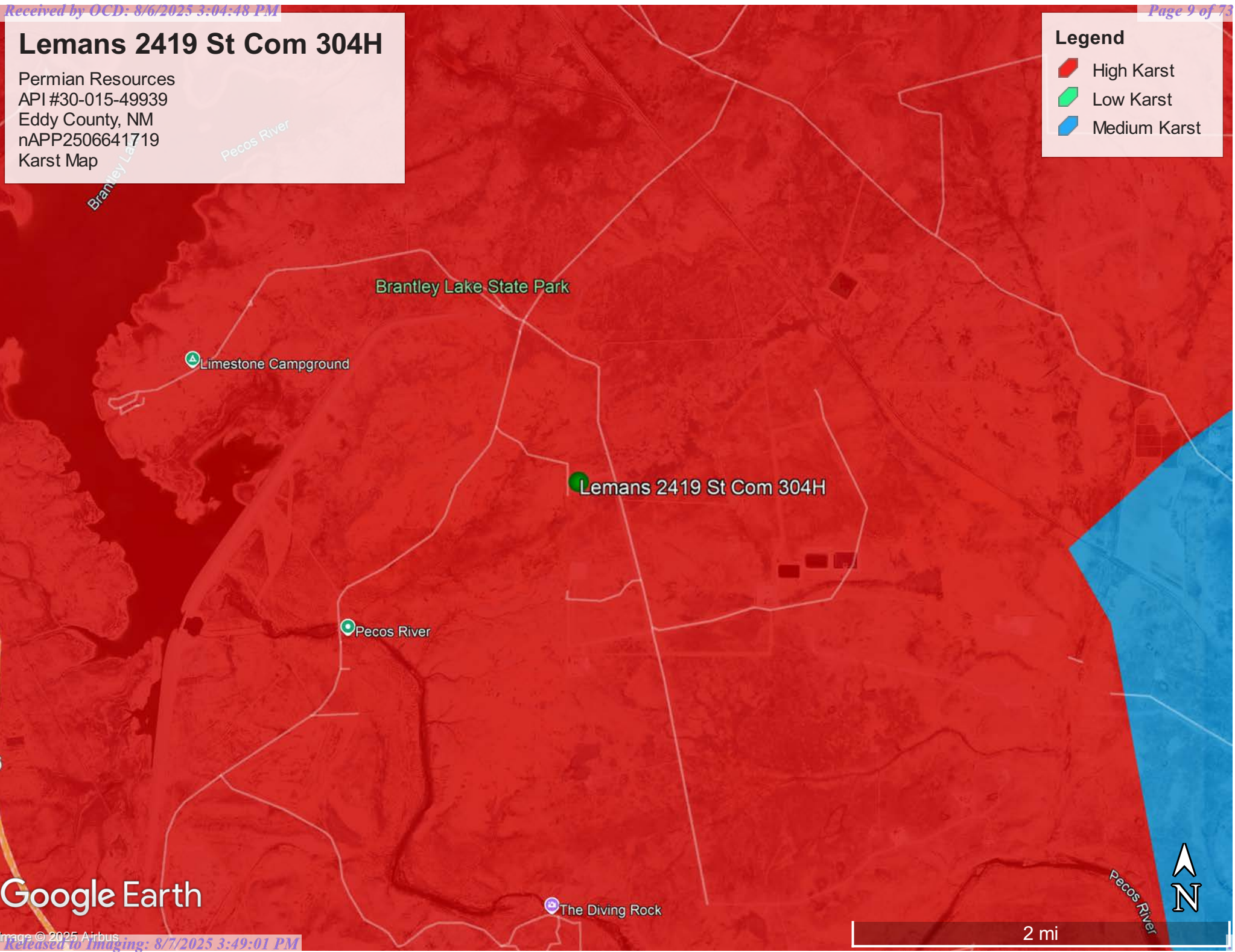


# Lemans 2419 St Com 304H

Permian Resources  
API #30-015-49939  
Eddy County, NM  
nAPP2506641719  
Karst Map

## Legend

-  High Karst
-  Low Karst
-  Medium Karst



Google Earth

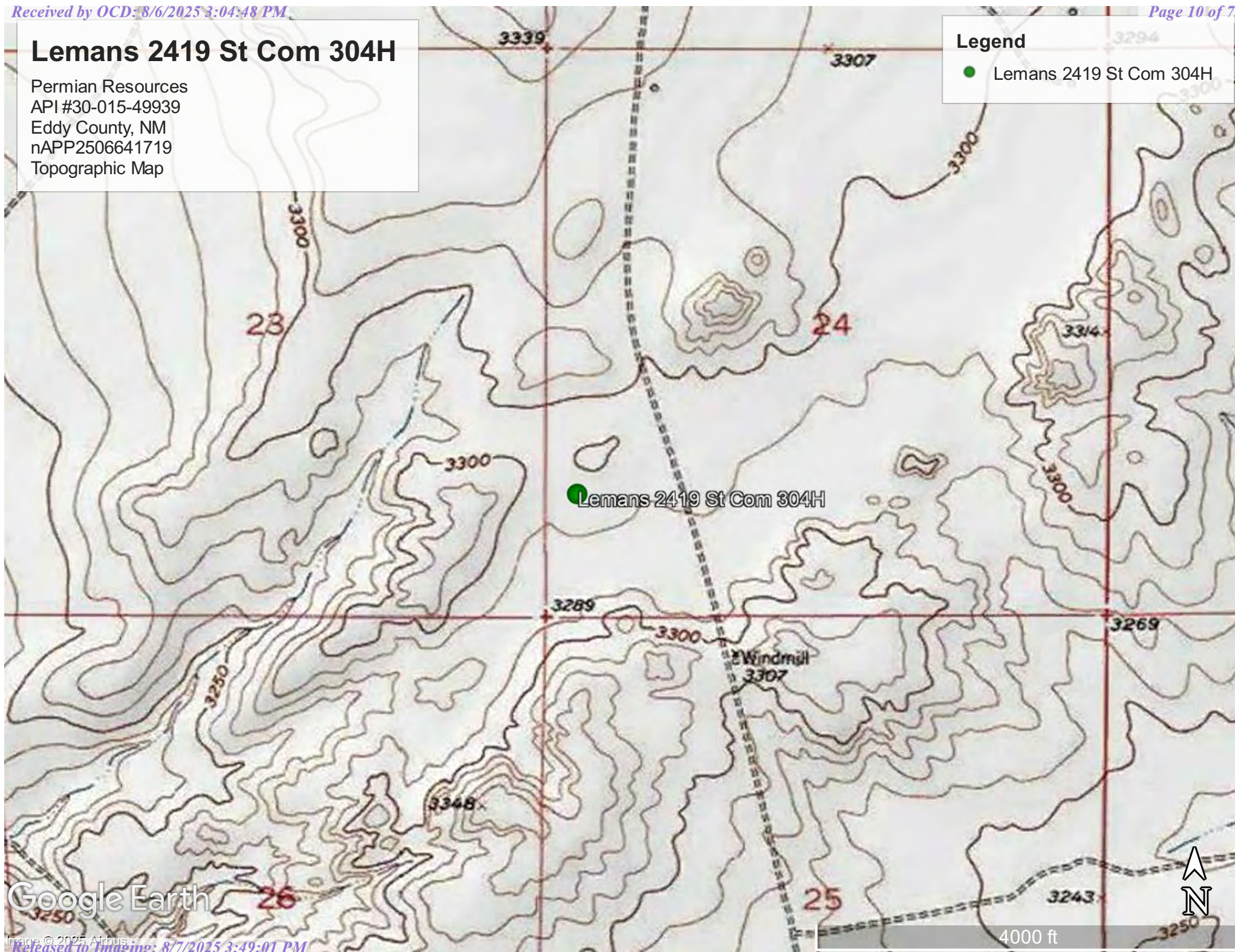


# Lemans 2419 St Com 304H

Permian Resources  
API #30-015-49939  
Eddy County, NM  
nAPP2506641719  
Topographic Map

## Legend

● Lemans 2419 St Com 304H



Google Earth

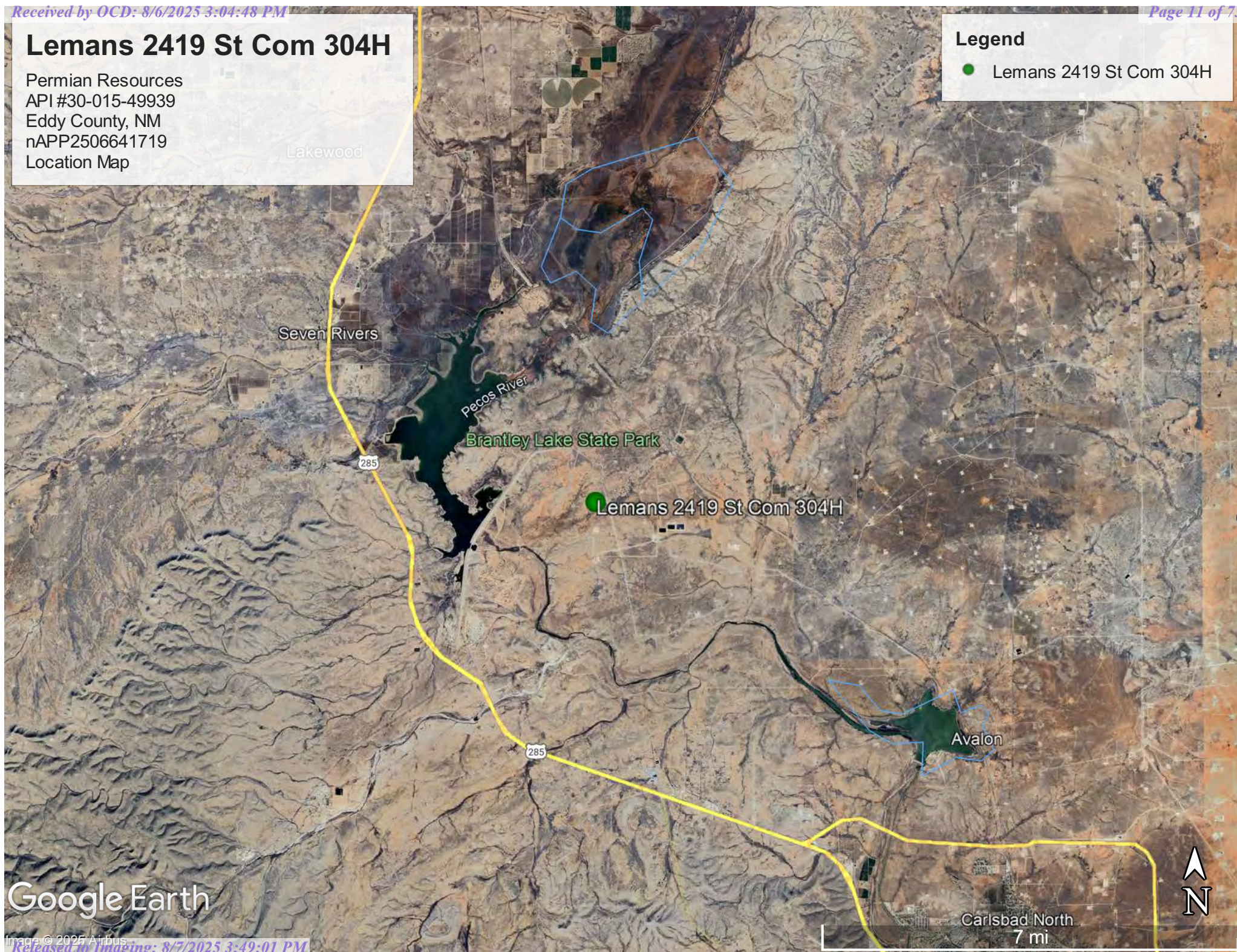


# Lemans 2419 St Com 304H

Permian Resources  
API #30-015-49939  
Eddy County, NM  
nAPP2506641719  
Location Map

## Legend

● Lemans 2419 St Com 304H



Google Earth



## Special Status Plant/Wildlife Map



3/20/2025

Potential Habitat (Planning Area Only)

Gypsum wild buckwheat

Scheer's beehive cactus

Wright's waterwillow

World Imagery

Low Resolution 15m Imagery

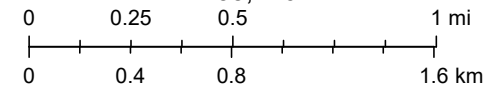
High Resolution 60cm Imagery

High Resolution 30cm Imagery

Citations

9.6m Resolution Metadata

1:35,426



Sources: Esri, TomTom, Garmin, FAO, NOAA, USGS, (c) OpenStreetMap contributors, and the GIS User Community, Bureau of Land Management -

## ***Appendix A***

Water Surveys

Water-Related Maps



New Mexico Office of the State Engineer

Water Column/Average Depth to Water

(A CLW##### in the POD suffix indicates the POD has been replaced & no longer serves a water right file.) (R=POD has been replaced, O=orphaned, C=the file is closed)

(quarters are smallest to largest)

POD Number	Code	Sub basin	County	Q64	Q16	Q4	Sec	Tws	Range	X	Y	Map	(meters)	(In feet)		
													Distance	Well Depth	Depth Water	Water Column
<a href="#">RA 04908</a>	O	RA	ED		SE	NW	23	20S	26E	560461.0	3602785.0 *		1183	210	105	105
<a href="#">RA 04912</a>	O	RA	ED		SW	NW	23	20S	26E	560084.0	3602785.0 *		1518	58	22	36
<a href="#">C 00383</a>	C	CUB	ED		NE	NE	27	20S	26E	559756.0	3601577.0 *		1817	2117		
<a href="#">C 01460</a>		C	ED		SW	SW	26	20S	26E	560172.0	3600370.0 *		2222	300		
<a href="#">C 00419</a>	C	CUB	ED	SW	SW	SE	19	20S	27E	563904.0	3601904.0 *		2445	1813		
<a href="#">C 00998</a>		C	ED	NW	NW	NW	35	20S	26E	560076.0	3600063.0 *		2530	110	52	58
<a href="#">C 00998 POD2</a>		C	ED	NW	NW	NW	35	20S	26E	560076.0	3600063.0 *		2530	110	52	58
<a href="#">C 01585</a>		C	ED	NW	NW	NW	35	20S	26E	560076.0	3600063.0 *		2530	33	31	2
<a href="#">C 01753</a>		C	ED	NW	NW	NW	35	20S	26E	560076.0	3600063.0 *		2530	85	40	45
<a href="#">C 01586</a>		C	ED	SW	NW	NW	35	20S	26E	560076.0	3599863.0 *		2699	85	45	40

Average Depth to Water: 49 feet

Minimum Depth: 22 feet

Maximum Depth: 105 feet

Record Count: 10

Basin/County Search:

County: ED

UTM Filters (in meters):

Easting: 561473.58

Northing: 3602172.10

Radius: 03000

\* UTM location was derived from PLSS - see Help

The data is furnished by the NMOSE/ISC and is accepted by the recipient with the expressed understanding that the OSE/ISC make no warranties, expressed or implied, concerning the accuracy, completeness, reliability, usability, or suitability for any particular purpose of the data.

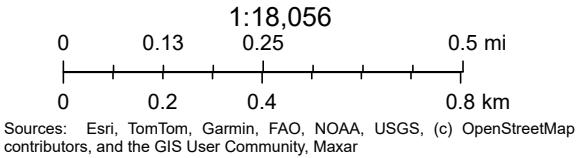


# OSE POD Location Map



3/20/2025, 2:39:23 PM

- GIS WATERS PODs
- |  |         |  |                         |  |                              |
|--|---------|--|-------------------------|--|------------------------------|
|  | Pending |  | OSE District Boundary   |  | Artesian Planning Area       |
|  | Capped  |  | Water Right Regulations |  | New Mexico State Trust Lands |
|  |         |  | Closure Area            |  | Both Estates                 |





[USGS Home](#)  
[Contact USGS](#)  
[Search USGS](#)

## National Water Information System: Web Interface

USGS Water Resources

Data Category:

Groundwater

Geographic Area:

United States

GO

Click to hide News Bulletins

- Explore the *NEW* [USGS National Water Dashboard](#) interactive map to access real-time water data from over 13,500 stations nationwide.

Groundwater levels for the Nation

 Important: [Next Generation Monitoring Location Page](#)

### Search Results -- 1 sites found

site\_no list =

- 323309104211201

Minimum number of levels = 1

[Save file of selected sites](#) to local disk for future upload

### USGS 323309104211201 20S.26E.26.21111

Available data for this site

Groundwater: Field measurements

GO

Eddy County, New Mexico

Hydrologic Unit Code 13060011

Latitude 32°33'09", Longitude 104°21'12" NAD27

Land-surface elevation 3,273 feet above NAVD88

The depth of the well is 200 feet below land surface.

This well is completed in the Roswell Basin aquifer system (S400RSWLBS) national aquifer.

This well is completed in the Rustler Formation (312RSLR) local aquifer.

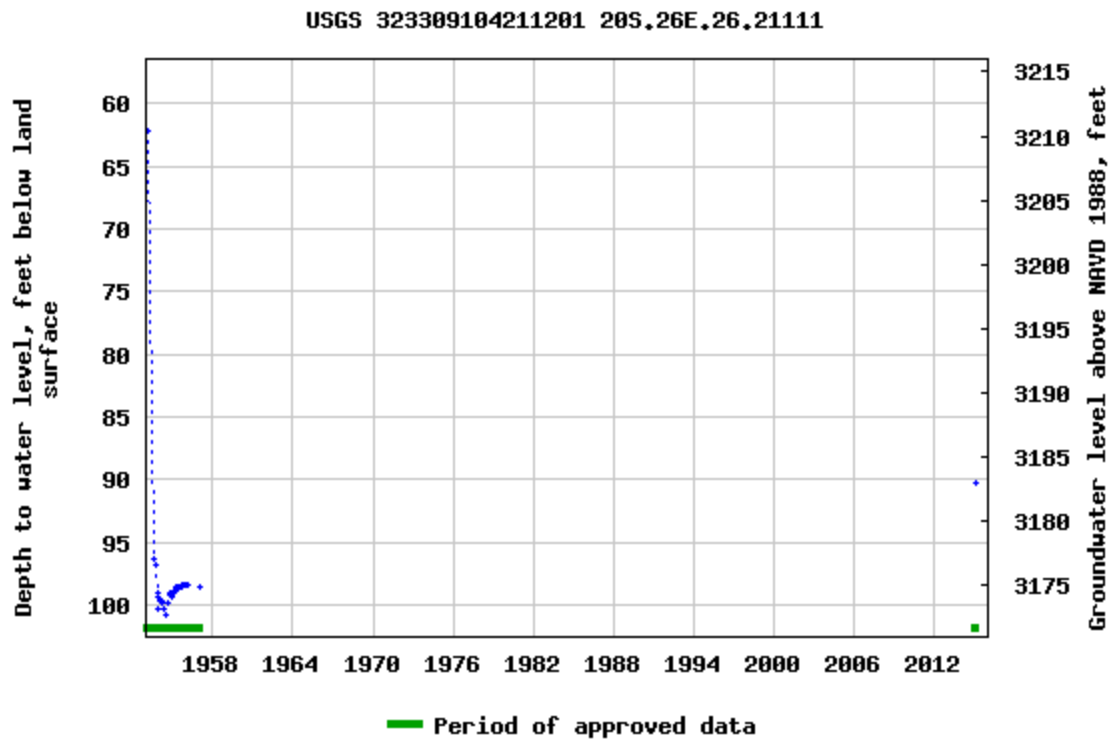
#### Output formats

[Table of data](#)

[Tab-separated data](#)

[Graph of data](#)

[Reselect period](#)



Breaks in the plot represent a gap of at least one year between field measurements.

[Download a presentation-quality graph](#)

[Questions or Comments](#)

[Help](#)

[Data Tips](#)

[Explanation of terms](#)

[Subscribe for system changes](#)

[Accessibility](#) [FOIA](#) [Privacy](#) [Policies and Notices](#)

[U.S. Department of the Interior](#) | [U.S. Geological Survey](#)

**Title: Groundwater for USA: Water Levels**

**URL: <https://nwis.waterdata.usgs.gov/nwis/gwlevels?>**



Page Contact Information: [USGS Water Data Support Team](#)

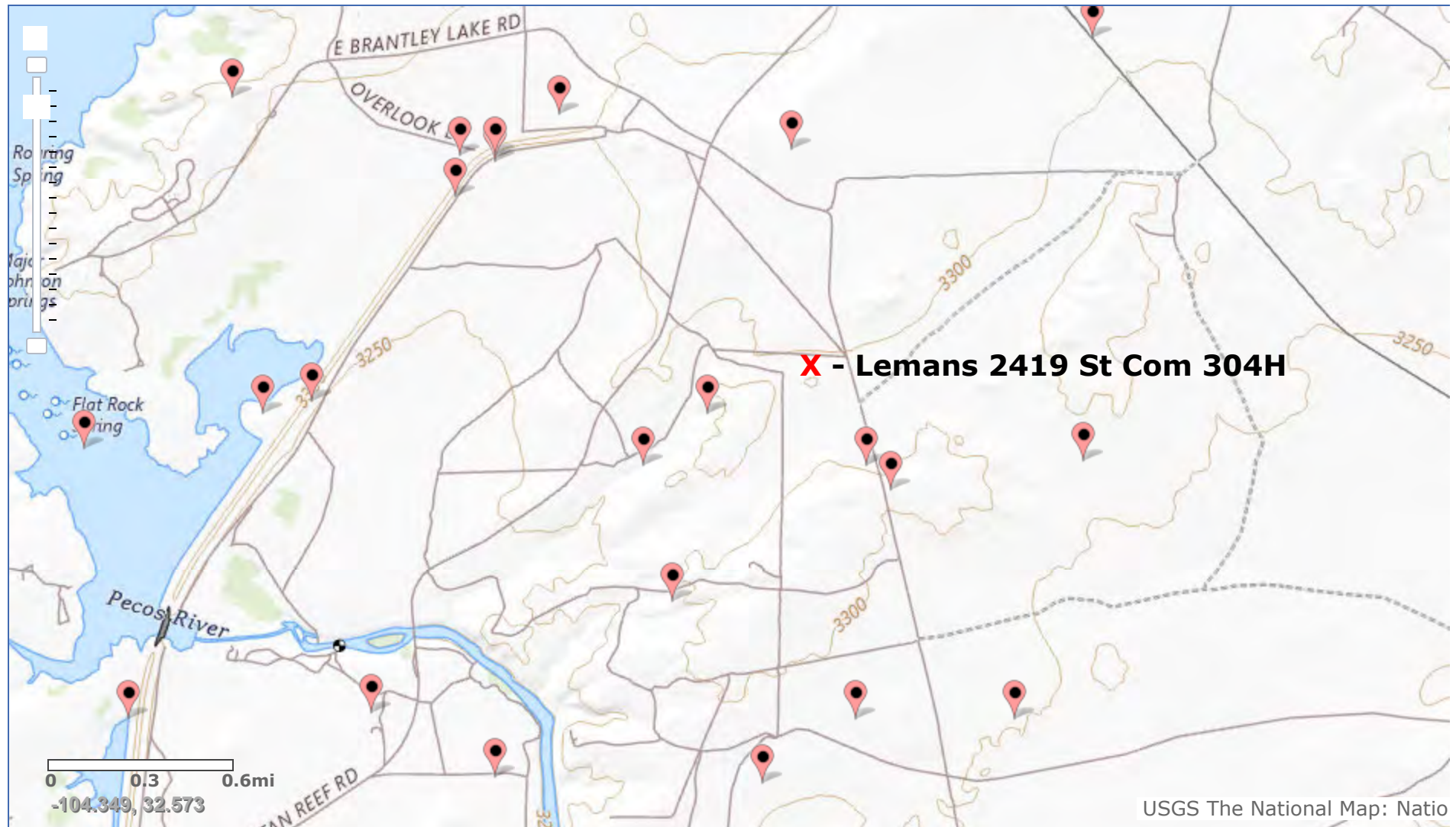
Page Last Modified: 2025-03-20 15:43:50 EDT

0.62 0.47 nadww01





## National Water Information System: Mapper



Site Information

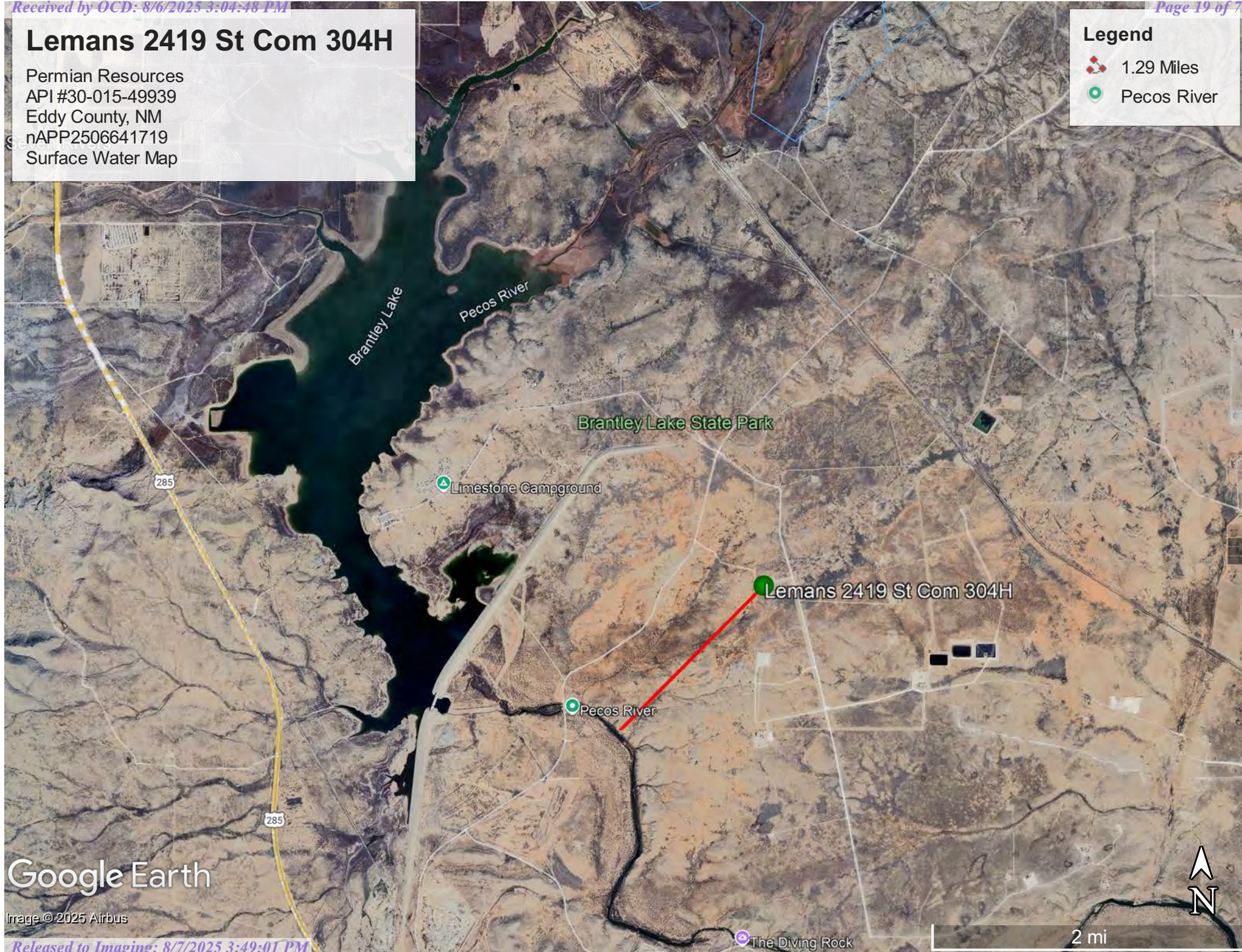


# Lemans 2419 St Com 304H

Permian Resources  
API #30-015-49939  
Eddy County, NM  
nAPP2506641719  
Surface Water Map

## Legend

- 1.29 Miles
- Pecos River



Google Earth

Image © 2025 Airbus





## Wetlands Map



March 20, 2025

**Wetlands**

- Estuarine and Marine Deepwater
- Estuarine and Marine Wetland

- Freshwater Emergent Wetland
- Freshwater Forested/Shrub Wetland
- Freshwater Pond

- Lake
- Other
- Riverine

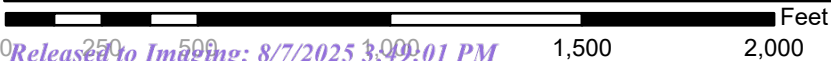
This map is for general reference only. The US Fish and Wildlife Service is not responsible for the accuracy or currentness of the base data shown on this map. All wetlands related data should be used in accordance with the layer metadata found on the Wetlands Mapper web site.



# National Flood Hazard Layer FIRMette



104°21'W 32°33'34"N



1:6,000

104°20'23"W 32°33'4"N

## Legend

SEE FIS REPORT FOR DETAILED LEGEND AND INDEX MAP FOR FIRM PANEL LAYOUT

SPECIAL FLOOD HAZARD AREAS		Without Base Flood Elevation (BFE) Zone A, V, A99
		With BFE or Depth Zone AE, AO, AH, VE, AR
		Regulatory Floodway
OTHER AREAS OF FLOOD HAZARD		0.2% Annual Chance Flood Hazard, Areas of 1% annual chance flood with average depth less than one foot or with drainage areas of less than one square mile Zone X
		Future Conditions 1% Annual Chance Flood Hazard Zone X
		Area with Reduced Flood Risk due to Levee. See Notes. Zone X
		Area with Flood Risk due to Levee Zone D
OTHER AREAS		NO SCREEN Area of Minimal Flood Hazard Zone X
		Effective LOMRs
		Area of Undetermined Flood Hazard Zone D
GENERAL STRUCTURES		Channel, Culvert, or Storm Sewer
		Levee, Dike, or Floodwall
OTHER FEATURES		20.2 Cross Sections with 1% Annual Chance Water Surface Elevation
		17.5 Cross Sections with 1% Annual Chance Water Surface Elevation
		Coastal Transect
		Base Flood Elevation Line (BFE)
		Limit of Study
		Jurisdiction Boundary
		Coastal Transect Baseline
		Profile Baseline
MAP PANELS		Digital Data Available
		No Digital Data Available
		Unmapped



The pin displayed on the map is an approximate point selected by the user and does not represent an authoritative property location.

This map complies with FEMA's standards for the use of digital flood maps if it is not void as described below. The basemap shown complies with FEMA's basemap accuracy standards

The flood hazard information is derived directly from the authoritative NFHL web services provided by FEMA. This map was exported on 3/20/2025 at 7:48 PM and does not reflect changes or amendments subsequent to this date and time. The NFHL and effective information may change or become superseded by new data over time.

This map image is void if the one or more of the following map elements do not appear: basemap imagery, flood zone labels, legend, scale bar, map creation date, community identifiers, FIRM panel number, and FIRM effective date. Map images for unmapped and unmodernized areas cannot be used for regulatory purposes.

## ***Appendix B***

Soil Survey

Soil Map

Geologic Unit Map

Map Unit Description: Gypsum land-Cottonwood complex, 0 to 3 percent slopes---Eddy Area,  
New Mexico

---

## Eddy Area, New Mexico

### GC—Gypsum land-Cottonwood complex, 0 to 3 percent slopes

#### Map Unit Setting

*National map unit symbol:* 1w4g

*Elevation:* 1,250 to 5,000 feet

*Mean annual precipitation:* 10 to 25 inches

*Mean annual air temperature:* 57 to 66 degrees F

*Frost-free period:* 190 to 225 days

*Farmland classification:* Not prime farmland

#### Map Unit Composition

*Gypsum land:* 60 percent

*Cottonwood and similar soils:* 30 percent

*Minor components:* 10 percent

*Estimates are based on observations, descriptions, and transects of the mapunit.*

#### Description of Gypsum Land

##### Setting

*Landform:* Ridges, plains, hills

*Landform position (two-dimensional):* Shoulder, backslope, footslope, toeslope

*Landform position (three-dimensional):* Side slope, head slope, nose slope, crest

*Down-slope shape:* Convex

*Across-slope shape:* Linear

*Parent material:* Residuum weathered from gypsum

##### Interpretive groups

*Land capability classification (irrigated):* None specified

*Land capability classification (nonirrigated):* 8s

*Hydric soil rating:* No

#### Description of Cottonwood

##### Setting

*Landform:* Ridges, hills

*Landform position (two-dimensional):* Shoulder, backslope, footslope, toeslope

*Landform position (three-dimensional):* Side slope, head slope, nose slope, crest

*Down-slope shape:* Convex

*Across-slope shape:* Linear

*Parent material:* Residuum weathered from gypsum

##### Typical profile

*H1 - 0 to 8 inches:* loam

*H2 - 8 to 60 inches:* bedrock

Map Unit Description: Gypsum land-Cottonwood complex, 0 to 3 percent slopes---Eddy Area,  
New Mexico

---

**Properties and qualities**

*Slope:* 0 to 3 percent

*Depth to restrictive feature:* 3 to 12 inches to paralithic bedrock

*Drainage class:* Well drained

*Runoff class:* Low

*Capacity of the most limiting layer to transmit water*

*(Ksat):* Moderately high to high (0.20 to 2.00 in/hr)

*Depth to water table:* More than 80 inches

*Frequency of flooding:* None

*Frequency of ponding:* None

*Calcium carbonate, maximum content:* 15 percent

*Gypsum, maximum content:* 5 percent

*Maximum salinity:* Nonsaline to very slightly saline (0.0 to 2.0 mmhos/cm)

*Sodium adsorption ratio, maximum:* 1.0

*Available water supply, 0 to 60 inches:* Very low (about 1.2 inches)

**Interpretive groups**

*Land capability classification (irrigated):* None specified

*Land capability classification (nonirrigated):* 6s

*Hydrologic Soil Group:* D

*Ecological site:* R070BB006NM - Gyp Upland

*Hydric soil rating:* No

**Minor Components****Rock outcrop**

*Percent of map unit:* 5 percent

*Hydric soil rating:* No

**Cottonwood**

*Percent of map unit:* 5 percent

*Ecological site:* R070BC033NM - Salty Bottomland

*Hydric soil rating:* No

**Data Source Information**

Soil Survey Area: Eddy Area, New Mexico

Survey Area Data: Version 20, Sep 3, 2024



Soil Map—Eddy Area, New Mexico



Natural Resources  
Conservation Service

Web Soil Survey  
National Cooperative Soil Survey

3/20/2025  
Page 1 of 3



## Soil Map—Eddy Area, New Mexico

## MAP LEGEND

## Area of Interest (AOI)

 Area of Interest (AOI)

## Soils

 Soil Map Unit Polygons

 Soil Map Unit Lines

 Soil Map Unit Points

## Special Point Features



Blowout



Borrow Pit



Clay Spot



Closed Depression



Gravel Pit



Gravelly Spot



Landfill



Lava Flow



Marsh or swamp



Mine or Quarry



Miscellaneous Water



Perennial Water



Rock Outcrop



Saline Spot



Sandy Spot



Severely Eroded Spot



Sinkhole



Slide or Slip



Sodic Spot



Spoil Area



Stony Spot



Very Stony Spot



Wet Spot



Other



Special Line Features

## Water Features



Streams and Canals

## Transportation



Rails



Interstate Highways



US Routes



Major Roads



Local Roads

## Background



Aerial Photography

## MAP INFORMATION

The soil surveys that comprise your AOI were mapped at 1:20,000.

Warning: Soil Map may not be valid at this scale.

Enlargement of maps beyond the scale of mapping can cause misunderstanding of the detail of mapping and accuracy of soil line placement. The maps do not show the small areas of contrasting soils that could have been shown at a more detailed scale.

Please rely on the bar scale on each map sheet for map measurements.

Source of Map: Natural Resources Conservation Service

Web Soil Survey URL:

Coordinate System: Web Mercator (EPSG:3857)

Maps from the Web Soil Survey are based on the Web Mercator projection, which preserves direction and shape but distorts distance and area. A projection that preserves area, such as the Albers equal-area conic projection, should be used if more accurate calculations of distance or area are required.

This product is generated from the USDA-NRCS certified data as of the version date(s) listed below.

Soil Survey Area: Eddy Area, New Mexico

Survey Area Data: Version 20, Sep 3, 2024

Soil map units are labeled (as space allows) for map scales 1:50,000 or larger.

Date(s) aerial images were photographed: Nov 12, 2022—Dec 2, 2022

The orthophoto or other base map on which the soil lines were compiled and digitized probably differs from the background imagery displayed on these maps. As a result, some minor shifting of map unit boundaries may be evident.

Map Unit Legend

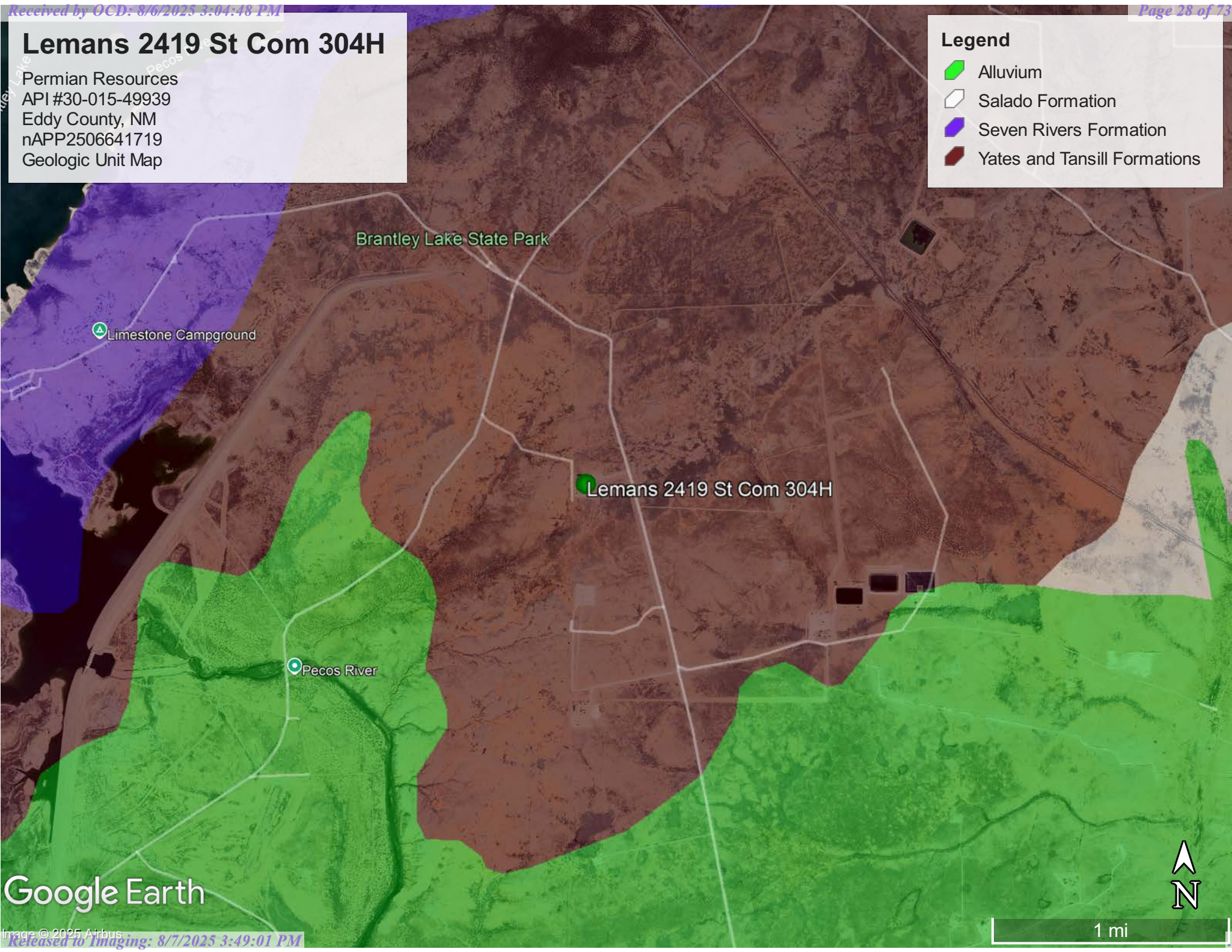
Map Unit Symbol	Map Unit Name	Acres in AOI	Percent of AOI
GC	Gypsum land-Cottonwood complex, 0 to 3 percent slopes	9.4	94.5%
SG	Simona gravelly fine sandy loam, 0 to 3 percent slopes	0.5	5.5%
Totals for Area of Interest		9.9	100.0%

# Lemans 2419 St Com 304H

Permian Resources  
API #30-015-49939  
Eddy County, NM  
nAPP2506641719  
Geologic Unit Map

## Legend

- Alluvium
- Salado Formation
- Seven Rivers Formation
- Yates and Tansill Formations



Google Earth



**NMSLO Seed Mix****Loamy (L)****LOAMY (L) SITES SEED MIXTURE:**

COMMON NAME	VARIETY	APPLICATION RATE (PLS/Acre)	DRILL BOX
<b>Grasses:</b>			
Black grama	VNS, Southern	1.0	D
Blue grama	Lovington	1.0	D
Sideoats grama	Vaughn, El Reno	4.0	F
Sand dropseed	VNS, Southern	2.0	S
Alkali sacaton	VNS, Southern	1.0	
Little bluestem	Cimarron, Pastura	1.5	F
<b>Forbs:</b>			
Firewheel ( <i>Gaillardia</i> )	VNS, Southern	1.0	D
<b>Shrubs:</b>			
Fourwing saltbush	Marana, Santa Rita	1.0	D
Common winterfat	VNS, Southern	0.5	F
<b>Total PLS/acre</b>		<b>18.0</b>	

S = Small seed drill box, D = Standard seed drill box, F = Fluffy seed drill box

VNS = Variety Not Stated, PLS = Pure Live Seed

- Seed mixes should be provided in bags separating seed types into the three categories: small (S), standard (D) and fluffy (F).
- VNS, Southern – Seed should be from a southern latitude collection of this species.
- Double seed application rate for broadcast or hydroseeding.
- If one species is not available, contact the SLO for an approved substitute; alternatively the SLO may require other species proportionately increased.
- Additional information on these seed species can be found on the USDA Plants Database website at <http://plants.usda.gov>.



## ***Appendix C***

48-Hour Notification

Sante Fe Main Office  
Phone: (505) 476-3441

General Information  
Phone: (505) 629-6116

Online Phone Directory  
<https://www.emnrd.nm.gov/ocd/contact-us>

**State of New Mexico**  
**Energy, Minerals and Natural Resources**  
**Oil Conservation Division**  
**1220 S. St Francis Dr.**  
**Santa Fe, NM 87505**

QUESTIONS

Action 444833

**QUESTIONS**

Operator: Permian Resources Operating, LLC 300 N. Marienfeld St Ste 1000 Midland, TX 79701	OGRID: 372165
	Action Number: 444833
	Action Type: [NOTIFY] Notification Of Sampling (C-141N)

**QUESTIONS**

Prerequisites	
Incident ID (n#)	nAPP2506641719
Incident Name	NAPP2506641719 LEMANS 2419 ST COM 304H @ 30-015-49939
Incident Type	Oil Release
Incident Status	Initial C-141 Approved
Incident Well	[30-015-49939] LE MANS 2419 STATE COM #304H

Location of Release Source	
Site Name	LeMans 2419 St Com 304H
Date Release Discovered	02/21/2025
Surface Owner	State

Sampling Event General Information	
Please answer all the questions in this group.	
What is the sampling surface area in square feet	1,500
What is the estimated number of samples that will be gathered	12
Sampling date pursuant to Subparagraph (a) of Paragraph (1) of Subsection D of 19.15.29.12 NMAC	03/26/2025
Time sampling will commence	02:30 PM
Please provide any information necessary for observers to contact samplers	Scott - (575) 703-8880
Please provide any information necessary for navigation to sampling site	32.555271, -104.345047

Sante Fe Main Office  
Phone: (505) 476-3441

General Information  
Phone: (505) 629-6116

Online Phone Directory  
<https://www.emnrd.nm.gov/oed/contact-us>

State of New Mexico  
Energy, Minerals and Natural Resources  
Oil Conservation Division  
1220 S. St Francis Dr.  
Santa Fe, NM 87505

CONDITIONS

Action 444833

CONDITIONS

Operator: Permian Resources Operating, LLC 300 N. Marienfeld St Ste 1000 Midland, TX 79701	OGRID: 372165
	Action Number: 444833
	Action Type: [NOTIFY] Notification Of Sampling (C-141N)

CONDITIONS

Created By	Condition	Condition Date
mtaylorpr	Failure to notify the OCD of sampling events including any changes in date/time per the requirements of 19.15.29.12.D.(1).(a) NMAC, may result in the remediation closure samples not being accepted.	3/24/2025



## ***Appendix D***

Photographic Documentation





Initial Spill picture, NE of flare looking W



Confirmation Sampling pad section looking E



Confirmation Sampling pad section



Confirmation sampling section at berm





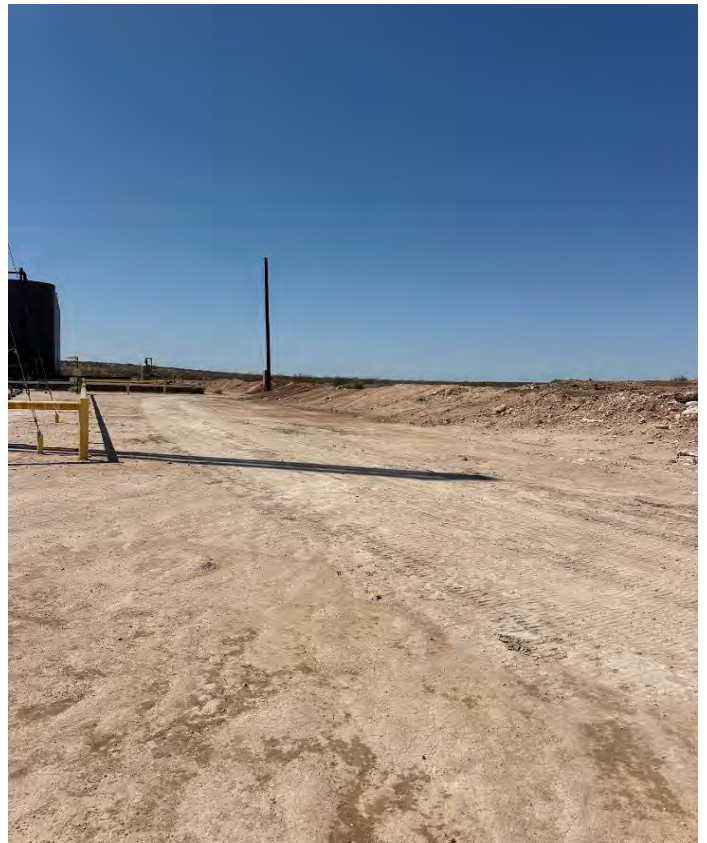
Pasture section with topsoil after seeding



Pasture section after seeding looking N



Pasture section after seeding looking W



Pad section after scraping looking W





Pasture section during reseeding looking NW



Pad section after backfill & repacking looking W



Pasture section during scrape looking W



Pasture section during scrape looking S



Backfill Sample Collection





## ***Appendix E***

Laboratory Report



PHONE (575) 393-2326 ° 101 E. MARLAND ° HOBBS, NM 88240

---

April 04, 2025

TOM BYNUM

SAPEC-ECO,LLC

5846 E 21ST PLACE

TULSA, OK 74114

RE: LEMANS 2419 ST COM 304H

Enclosed are the results of analyses for samples received by the laboratory on 03/28/25 9:23.

Cardinal Laboratories is accredited through Texas NELAP under certificate number TX-C24-00112. Accreditation applies to drinking water, non-potable water and solid and chemical materials. All accredited analytes are denoted by an asterisk (\*). For a complete list of accredited analytes and matrices visit the TCEQ website at

[www.tceq.texas.gov/field/ga/lab\\_accred\\_certif.html](http://www.tceq.texas.gov/field/ga/lab_accred_certif.html).

Cardinal Laboratories is accredited through the State of Colorado Department of Public Health and Environment for:

Method EPA 552.2	Total Haloacetic Acids (HAA-5)
Method EPA 524.2	Total Trihalomethanes (TTHM)
Method EPA 524.4	Regulated VOCs (V1, V2, V3)

Cardinal Laboratories is accredited through the State of New Mexico Environment Department for:

Method SM 9223-B	Total Coliform and E. coli (Colilert MMO-MUG)
Method EPA 524.2	Regulated VOCs and Total Trihalomethanes (TTHM)
Method EPA 552.2	Total Haloacetic Acids (HAA-5)

Accreditation applies to public drinking water matrices for State of Colorado and New Mexico.

This report meets NELAP requirements and is made up of a cover page, analytical results, and a copy of the original chain-of-custody. If you have any questions concerning this report, please feel free to contact me.

Sincerely,

Celey D. Keene

Lab Director/Quality Manager



PHONE (575) 393-2326 ° 101 E. MARLAND ° HOBBS, NM 88240

**Analytical Results For:**

SAPEC-ECO,LLC  
5846 E 21ST PLACE  
TULSA OK, 74114

Project: LEMANS 2419 ST COM 304H  
Project Number: 4-20  
Project Manager: TOM BYNUM  
Fax To:

Reported:  
04-Apr-25 14:44

Sample ID	Laboratory ID	Matrix	Date Sampled	Date Received
1-6"	H251843-01	Soil	26-Mar-25 16:00	28-Mar-25 09:23
2-6"	H251843-02	Soil	26-Mar-25 16:09	28-Mar-25 09:23
3-6"	H251843-03	Soil	26-Mar-25 16:17	28-Mar-25 09:23
4-6"	H251843-04	Soil	26-Mar-25 16:25	28-Mar-25 09:23
5-6"	H251843-05	Soil	26-Mar-25 16:36	28-Mar-25 09:23
6-6"	H251843-06	Soil	26-Mar-25 16:43	28-Mar-25 09:23
7-6"	H251843-07	Soil	26-Mar-25 16:52	28-Mar-25 09:23
8-6"	H251843-08	Soil	26-Mar-25 17:02	28-Mar-25 09:23
W1-6"	H251843-09	Soil	26-Mar-25 17:11	28-Mar-25 09:23
W2-6"	H251843-10	Soil	26-Mar-25 17:20	28-Mar-25 09:23
W3-6"	H251843-11	Soil	26-Mar-25 17:29	28-Mar-25 09:23
W4-6"	H251843-12	Soil	26-Mar-25 17:37	28-Mar-25 09:23

04/04/25 - Client changed the sample date on all samples (see COC). This is the revised report and will replace the one sent on 04/03/25.

Cardinal Laboratories

\*=Accredited Analyte

PLEASE NOTE: Liability and Damages. Cardinal's liability and client's exclusive remedy for any claim arising, whether based in contract or tort, shall be limited to the amount paid by client for analyses. All claims, including those for negligence or any other cause whatsoever shall be deemed waived unless made in writing and received by Cardinal within thirty (30) days after completion of the applicable service. In no event shall Cardinal be liable for incidental or consequential damage including, without limitation, business interruptions, loss of use, or loss of profits incurred by client, its subsidiaries, affiliates or successors arising out of or related to the performance of the services hereunder by Cardinal, regardless of whether such claim is based upon any of the above stated reasons or otherwise. Results relate only to the samples identified above. This report shall not be reproduced except in full with written approval of Cardinal Laboratories.

Celey D. Keene, Lab Director/Quality Manager



PHONE (575) 393-2326 ° 101 E. MARLAND ° HOBBS, NM 88240

**Analytical Results For:**

SAPEC-ECO, LLC  
5846 E 21ST PLACE  
TULSA OK, 74114

Project: LEMANS 2419 ST COM 304H  
Project Number: 4-20  
Project Manager: TOM BYNUM  
Fax To:

Reported:  
04-Apr-25 14:44

**1-6"****H251843-01 (Soil)**

Analyte	Result	MDL	Reporting Limit	Units	Dilution	Batch	Analyst	Analyzed	Method	Notes
---------	--------	-----	-----------------	-------	----------	-------	---------	----------	--------	-------

**Cardinal Laboratories****Inorganic Compounds**

<b>Chloride</b>	<b>16.0</b>		16.0	mg/kg	4	5033111	CT	31-Mar-25	4500-Cl-B	
-----------------	-------------	--	------	-------	---	---------	----	-----------	-----------	--

**Volatile Organic Compounds by EPA Method 8021****S-04**

Benzene*	<0.050		0.050	mg/kg	50	5033108	JH	31-Mar-25	8021B	
Toluene*	<0.050		0.050	mg/kg	50	5033108	JH	31-Mar-25	8021B	
Ethylbenzene*	<0.050		0.050	mg/kg	50	5033108	JH	31-Mar-25	8021B	
Total Xylenes*	<0.150		0.150	mg/kg	50	5033108	JH	31-Mar-25	8021B	
Total BTEX	<0.300		0.300	mg/kg	50	5033108	JH	31-Mar-25	8021B	

Surrogate: 4-Bromofluorobenzene (PID)			140 %	71.5-134		5033108	JH	31-Mar-25	8021B	
---------------------------------------	--	--	-------	----------	--	---------	----	-----------	-------	--

**Petroleum Hydrocarbons by GC FID**

GRO C6-C10*	<10.0		10.0	mg/kg	1	5033001	MS	31-Mar-25	8015B	
DRO >C10-C28*	<10.0		10.0	mg/kg	1	5033001	MS	31-Mar-25	8015B	
EXT DRO >C28-C36	<10.0		10.0	mg/kg	1	5033001	MS	31-Mar-25	8015B	

Surrogate: 1-Chlorooctane			83.9 %	44.4-145		5033001	MS	31-Mar-25	8015B	
---------------------------	--	--	--------	----------	--	---------	----	-----------	-------	--

Surrogate: 1-Chlorooctadecane			79.8 %	40.6-153		5033001	MS	31-Mar-25	8015B	
-------------------------------	--	--	--------	----------	--	---------	----	-----------	-------	--

Cardinal Laboratories

\*=Accredited Analyte

PLEASE NOTE: Liability and Damages. Cardinal's liability and client's exclusive remedy for any claim arising, whether based in contract or tort, shall be limited to the amount paid by client for analyses. All claims, including those for negligence or any other cause whatsoever shall be deemed waived unless made in writing and received by Cardinal within thirty (30) days after completion of the applicable service. In no event shall Cardinal be liable for incidental or consequential damage including, without limitation, business interruptions, loss of use, or loss of profits incurred by client, its subsidiaries, affiliates or successors arising out of or related to the performance of the services hereunder by Cardinal, regardless of whether such claim is based upon any of the above stated reasons or otherwise. Results relate only to the samples identified above. This report shall not be reproduced except in full with written approval of Cardinal Laboratories.

Celey D. Keene, Lab Director/Quality Manager





PHONE (575) 393-2326 ° 101 E. MARLAND ° HOBBS, NM 88240

**Analytical Results For:**

SAPEC-ECO,LLC  
5846 E 21ST PLACE  
TULSA OK, 74114

Project: LEMANS 2419 ST COM 304H  
Project Number: 4-20  
Project Manager: TOM BYNUM  
Fax To:

Reported:  
04-Apr-25 14:44

**2-6"****H251843-02 (Soil)**

Analyte	Result	MDL	Reporting Limit	Units	Dilution	Batch	Analyst	Analyzed	Method	Notes
---------	--------	-----	-----------------	-------	----------	-------	---------	----------	--------	-------

**Cardinal Laboratories****Inorganic Compounds**

<b>Chloride</b>	<b>16.0</b>		16.0	mg/kg	4	5033111	CT	31-Mar-25	4500-Cl-B	
-----------------	-------------	--	------	-------	---	---------	----	-----------	-----------	--

**Volatile Organic Compounds by EPA Method 8021**

Benzene*	<0.050		0.050	mg/kg	50	5033108	JH	31-Mar-25	8021B	
Toluene*	<0.050		0.050	mg/kg	50	5033108	JH	31-Mar-25	8021B	
Ethylbenzene*	<0.050		0.050	mg/kg	50	5033108	JH	31-Mar-25	8021B	
Total Xylenes*	<0.150		0.150	mg/kg	50	5033108	JH	31-Mar-25	8021B	
Total BTEX	<0.300		0.300	mg/kg	50	5033108	JH	31-Mar-25	8021B	

<i>Surrogate: 4-Bromofluorobenzene (PID)</i>			133 %	71.5-134		5033108	JH	31-Mar-25	8021B	
--	--	--	-------	----------	--	---------	----	-----------	-------	--

**Petroleum Hydrocarbons by GC FID**

GRO C6-C10*	<10.0		10.0	mg/kg	1	5033001	MS	31-Mar-25	8015B	
DRO >C10-C28*	<10.0		10.0	mg/kg	1	5033001	MS	31-Mar-25	8015B	
EXT DRO >C28-C36	<10.0		10.0	mg/kg	1	5033001	MS	31-Mar-25	8015B	

<i>Surrogate: 1-Chlorooctane</i>			86.9 %	44.4-145		5033001	MS	31-Mar-25	8015B	
----------------------------------	--	--	--------	----------	--	---------	----	-----------	-------	--

<i>Surrogate: 1-Chlorooctadecane</i>			80.0 %	40.6-153		5033001	MS	31-Mar-25	8015B	
--------------------------------------	--	--	--------	----------	--	---------	----	-----------	-------	--

Cardinal Laboratories

\*=Accredited Analyte

PLEASE NOTE: Liability and Damages. Cardinal's liability and client's exclusive remedy for any claim arising, whether based in contract or tort, shall be limited to the amount paid by client for analyses. All claims, including those for negligence or any other cause whatsoever shall be deemed waived unless made in writing and received by Cardinal within thirty (30) days after completion of the applicable service. In no event shall Cardinal be liable for incidental or consequential damage including, without limitation, business interruptions, loss of use, or loss of profits incurred by client, its subsidiaries, affiliates or successors arising out of or related to the performance of the services hereunder by Cardinal, regardless of whether such claim is based upon any of the above stated reasons or otherwise. Results relate only to the samples identified above. This report shall not be reproduced except in full with written approval of Cardinal Laboratories.

Celey D. Keene, Lab Director/Quality Manager



PHONE (575) 393-2326 ° 101 E. MARLAND ° HOBBS, NM 88240

**Analytical Results For:**

SAPEC-ECO,LLC  
5846 E 21ST PLACE  
TULSA OK, 74114

Project: LEMANS 2419 ST COM 304H  
Project Number: 4-20  
Project Manager: TOM BYNUM  
Fax To:

Reported:  
04-Apr-25 14:44

**3-6"****H251843-03 (Soil)**

Analyte	Result	MDL	Reporting Limit	Units	Dilution	Batch	Analyst	Analyzed	Method	Notes
---------	--------	-----	-----------------	-------	----------	-------	---------	----------	--------	-------

**Cardinal Laboratories****Inorganic Compounds**

<b>Chloride</b>	<b>16.0</b>		16.0	mg/kg	4	5033111	CT	31-Mar-25	4500-Cl-B	
-----------------	-------------	--	------	-------	---	---------	----	-----------	-----------	--

**Volatile Organic Compounds by EPA Method 8021****S-04**

Benzene*	<0.050		0.050	mg/kg	50	5033108	JH	31-Mar-25	8021B	
Toluene*	<0.050		0.050	mg/kg	50	5033108	JH	31-Mar-25	8021B	
Ethylbenzene*	<0.050		0.050	mg/kg	50	5033108	JH	31-Mar-25	8021B	
Total Xylenes*	<0.150		0.150	mg/kg	50	5033108	JH	31-Mar-25	8021B	
Total BTEX	<0.300		0.300	mg/kg	50	5033108	JH	31-Mar-25	8021B	

<i>Surrogate: 4-Bromofluorobenzene (PID)</i>			135 %	71.5-134		5033108	JH	31-Mar-25	8021B	
--	--	--	-------	----------	--	---------	----	-----------	-------	--

**Petroleum Hydrocarbons by GC FID**

GRO C6-C10*	<10.0		10.0	mg/kg	1	5033001	MS	31-Mar-25	8015B	
DRO >C10-C28*	<10.0		10.0	mg/kg	1	5033001	MS	31-Mar-25	8015B	
EXT DRO >C28-C36	<10.0		10.0	mg/kg	1	5033001	MS	31-Mar-25	8015B	

<i>Surrogate: 1-Chlorooctane</i>			82.3 %	44.4-145		5033001	MS	31-Mar-25	8015B	
----------------------------------	--	--	--------	----------	--	---------	----	-----------	-------	--

<i>Surrogate: 1-Chlorooctadecane</i>			75.4 %	40.6-153		5033001	MS	31-Mar-25	8015B	
--------------------------------------	--	--	--------	----------	--	---------	----	-----------	-------	--

Cardinal Laboratories

\*=Accredited Analyte

PLEASE NOTE: Liability and Damages. Cardinal's liability and client's exclusive remedy for any claim arising, whether based in contract or tort, shall be limited to the amount paid by client for analyses. All claims, including those for negligence or any other cause whatsoever shall be deemed waived unless made in writing and received by Cardinal within thirty (30) days after completion of the applicable service. In no event shall Cardinal be liable for incidental or consequential damage including, without limitation, business interruptions, loss of use, or loss of profits incurred by client, its subsidiaries, affiliates or successors arising out of or related to the performance of the services hereunder by Cardinal, regardless of whether such claim is based upon any of the above stated reasons or otherwise. Results relate only to the samples identified above. This report shall not be reproduced except in full with written approval of Cardinal Laboratories.

Celey D. Keene, Lab Director/Quality Manager



PHONE (575) 393-2326 ° 101 E. MARLAND ° HOBBS, NM 88240

**Analytical Results For:**

SAPEC-ECO,LLC  
5846 E 21ST PLACE  
TULSA OK, 74114

Project: LEMANS 2419 ST COM 304H  
Project Number: 4-20  
Project Manager: TOM BYNUM  
Fax To:

Reported:  
04-Apr-25 14:44

4-6"

H251843-04 (Soil)

Analyte	Result	MDL	Reporting Limit	Units	Dilution	Batch	Analyst	Analyzed	Method	Notes
---------	--------	-----	-----------------	-------	----------	-------	---------	----------	--------	-------

**Cardinal Laboratories****Inorganic Compounds**

Chloride	16.0		16.0	mg/kg	4	5033111	CT	31-Mar-25	4500-Cl-B	
----------	------	--	------	-------	---	---------	----	-----------	-----------	--

**Volatile Organic Compounds by EPA Method 8021**

Benzene*	<0.050		0.050	mg/kg	50	5033108	JH	31-Mar-25	8021B	
Toluene*	<0.050		0.050	mg/kg	50	5033108	JH	31-Mar-25	8021B	
Ethylbenzene*	<0.050		0.050	mg/kg	50	5033108	JH	31-Mar-25	8021B	
Total Xylenes*	<0.150		0.150	mg/kg	50	5033108	JH	31-Mar-25	8021B	
Total BTEX	<0.300		0.300	mg/kg	50	5033108	JH	31-Mar-25	8021B	

Surrogate: 4-Bromofluorobenzene (PID)		128 %		71.5-134		5033108	JH	31-Mar-25	8021B	
---------------------------------------	--	-------	--	----------	--	---------	----	-----------	-------	--

**Petroleum Hydrocarbons by GC FID**

GRO C6-C10*	<10.0		10.0	mg/kg	1	5033001	MS	31-Mar-25	8015B	
DRO >C10-C28*	<10.0		10.0	mg/kg	1	5033001	MS	31-Mar-25	8015B	
EXT DRO >C28-C36	<10.0		10.0	mg/kg	1	5033001	MS	31-Mar-25	8015B	

Surrogate: 1-Chlorooctane		88.6 %		44.4-145		5033001	MS	31-Mar-25	8015B	
---------------------------	--	--------	--	----------	--	---------	----	-----------	-------	--

Surrogate: 1-Chlorooctadecane		80.1 %		40.6-153		5033001	MS	31-Mar-25	8015B	
-------------------------------	--	--------	--	----------	--	---------	----	-----------	-------	--

Cardinal Laboratories

\*=Accredited Analyte

PLEASE NOTE: Liability and Damages. Cardinal's liability and client's exclusive remedy for any claim arising, whether based in contract or tort, shall be limited to the amount paid by client for analyses. All claims, including those for negligence or any other cause whatsoever shall be deemed waived unless made in writing and received by Cardinal within thirty (30) days after completion of the applicable service. In no event shall Cardinal be liable for incidental or consequential damage including, without limitation, business interruptions, loss of use, or loss of profits incurred by client, its subsidiaries, affiliates or successors arising out of or related to the performance of the services hereunder by Cardinal, regardless of whether such claim is based upon any of the above stated reasons or otherwise. Results relate only to the samples identified above. This report shall not be reproduced except in full with written approval of Cardinal Laboratories.

Celey D. Keene, Lab Director/Quality Manager





PHONE (575) 393-2326 ° 101 E. MARLAND ° HOBBS, NM 88240

**Analytical Results For:**

SAPEC-ECO,LLC  
5846 E 21ST PLACE  
TULSA OK, 74114

Project: LEMANS 2419 ST COM 304H  
Project Number: 4-20  
Project Manager: TOM BYNUM  
Fax To:

Reported:  
04-Apr-25 14:44

**5-6"****H251843-05 (Soil)**

Analyte	Result	MDL	Reporting Limit	Units	Dilution	Batch	Analyst	Analyzed	Method	Notes
---------	--------	-----	-----------------	-------	----------	-------	---------	----------	--------	-------

**Cardinal Laboratories****Inorganic Compounds**

<b>Chloride</b>	<b>16.0</b>		16.0	mg/kg	4	5033111	CT	31-Mar-25	4500-Cl-B	
-----------------	-------------	--	------	-------	---	---------	----	-----------	-----------	--

**Volatile Organic Compounds by EPA Method 8021**

Benzene*	<0.050		0.050	mg/kg	50	5033108	JH	31-Mar-25	8021B	
Toluene*	<0.050		0.050	mg/kg	50	5033108	JH	31-Mar-25	8021B	
Ethylbenzene*	<0.050		0.050	mg/kg	50	5033108	JH	31-Mar-25	8021B	
Total Xylenes*	<0.150		0.150	mg/kg	50	5033108	JH	31-Mar-25	8021B	
Total BTEX	<0.300		0.300	mg/kg	50	5033108	JH	31-Mar-25	8021B	

<i>Surrogate: 4-Bromofluorobenzene (PID)</i>			132 %	71.5-134		5033108	JH	31-Mar-25	8021B	
--	--	--	-------	----------	--	---------	----	-----------	-------	--

**Petroleum Hydrocarbons by GC FID**

GRO C6-C10*	<10.0		10.0	mg/kg	1	5033001	MS	31-Mar-25	8015B	
DRO >C10-C28*	<10.0		10.0	mg/kg	1	5033001	MS	31-Mar-25	8015B	
EXT DRO >C28-C36	<10.0		10.0	mg/kg	1	5033001	MS	31-Mar-25	8015B	

<i>Surrogate: 1-Chlorooctane</i>			92.7 %	44.4-145		5033001	MS	31-Mar-25	8015B	
----------------------------------	--	--	--------	----------	--	---------	----	-----------	-------	--

<i>Surrogate: 1-Chlorooctadecane</i>			83.8 %	40.6-153		5033001	MS	31-Mar-25	8015B	
--------------------------------------	--	--	--------	----------	--	---------	----	-----------	-------	--

Cardinal Laboratories

\*=Accredited Analyte

PLEASE NOTE: Liability and Damages. Cardinal's liability and client's exclusive remedy for any claim arising, whether based in contract or tort, shall be limited to the amount paid by client for analyses. All claims, including those for negligence or any other cause whatsoever shall be deemed waived unless made in writing and received by Cardinal within thirty (30) days after completion of the applicable service. In no event shall Cardinal be liable for incidental or consequential damage including, without limitation, business interruptions, loss of use, or loss of profits incurred by client, its subsidiaries, affiliates or successors arising out of or related to the performance of the services hereunder by Cardinal, regardless of whether such claim is based upon any of the above stated reasons or otherwise. Results relate only to the samples identified above. This report shall not be reproduced except in full with written approval of Cardinal Laboratories.

Celey D. Keene, Lab Director/Quality Manager



PHONE (575) 393-2326 ° 101 E. MARLAND ° HOBBS, NM 88240

**Analytical Results For:**

SAPEC-ECO,LLC  
5846 E 21ST PLACE  
TULSA OK, 74114

Project: LEMANS 2419 ST COM 304H  
Project Number: 4-20  
Project Manager: TOM BYNUM  
Fax To:

Reported:  
04-Apr-25 14:44

**6-6"****H251843-06 (Soil)**

Analyte	Result	MDL	Reporting Limit	Units	Dilution	Batch	Analyst	Analyzed	Method	Notes
---------	--------	-----	-----------------	-------	----------	-------	---------	----------	--------	-------

**Cardinal Laboratories****Inorganic Compounds**

Chloride	32.0		16.0	mg/kg	4	5033111	CT	31-Mar-25	4500-Cl-B	
----------	------	--	------	-------	---	---------	----	-----------	-----------	--

**Volatile Organic Compounds by EPA Method 8021**

Benzene*	<0.050		0.050	mg/kg	50	5033108	JH	31-Mar-25	8021B	
Toluene*	<0.050		0.050	mg/kg	50	5033108	JH	31-Mar-25	8021B	
Ethylbenzene*	<0.050		0.050	mg/kg	50	5033108	JH	31-Mar-25	8021B	
Total Xylenes*	<0.150		0.150	mg/kg	50	5033108	JH	31-Mar-25	8021B	
Total BTEX	<0.300		0.300	mg/kg	50	5033108	JH	31-Mar-25	8021B	

Surrogate: 4-Bromofluorobenzene (PID)			131 %	71.5-134		5033108	JH	31-Mar-25	8021B	
---------------------------------------	--	--	-------	----------	--	---------	----	-----------	-------	--

**Petroleum Hydrocarbons by GC FID**

GRO C6-C10*	<10.0		10.0	mg/kg	1	5033001	MS	31-Mar-25	8015B	
DRO >C10-C28*	<10.0		10.0	mg/kg	1	5033001	MS	31-Mar-25	8015B	
EXT DRO >C28-C36	<10.0		10.0	mg/kg	1	5033001	MS	31-Mar-25	8015B	

Surrogate: 1-Chlorooctane			96.4 %	44.4-145		5033001	MS	31-Mar-25	8015B	
---------------------------	--	--	--------	----------	--	---------	----	-----------	-------	--

Surrogate: 1-Chlorooctadecane			89.8 %	40.6-153		5033001	MS	31-Mar-25	8015B	
-------------------------------	--	--	--------	----------	--	---------	----	-----------	-------	--

Cardinal Laboratories

\*=Accredited Analyte

PLEASE NOTE: Liability and Damages. Cardinal's liability and client's exclusive remedy for any claim arising, whether based in contract or tort, shall be limited to the amount paid by client for analyses. All claims, including those for negligence or any other cause whatsoever shall be deemed waived unless made in writing and received by Cardinal within thirty (30) days after completion of the applicable service. In no event shall Cardinal be liable for incidental or consequential damage including, without limitation, business interruptions, loss of use, or loss of profits incurred by client, its subsidiaries, affiliates or successors arising out of or related to the performance of the services hereunder by Cardinal, regardless of whether such claim is based upon any of the above stated reasons or otherwise. Results relate only to the samples identified above. This report shall not be reproduced except in full with written approval of Cardinal Laboratories.

Celey D. Keene, Lab Director/Quality Manager



PHONE (575) 393-2326 ° 101 E. MARLAND ° HOBBS, NM 88240

**Analytical Results For:**

SAPEC-ECO,LLC  
5846 E 21ST PLACE  
TULSA OK, 74114

Project: LEMANS 2419 ST COM 304H  
Project Number: 4-20  
Project Manager: TOM BYNUM  
Fax To:

Reported:  
04-Apr-25 14:44

7-6"

H251843-07 (Soil)

Analyte	Result	MDL	Reporting Limit	Units	Dilution	Batch	Analyst	Analyzed	Method	Notes
---------	--------	-----	-----------------	-------	----------	-------	---------	----------	--------	-------

**Cardinal Laboratories****Inorganic Compounds**

Chloride	16.0		16.0	mg/kg	4	5033111	CT	31-Mar-25	4500-Cl-B	
----------	------	--	------	-------	---	---------	----	-----------	-----------	--

**Volatile Organic Compounds by EPA Method 8021**

Benzene*	<0.050		0.050	mg/kg	50	5040102	JH	01-Apr-25	8021B	
Toluene*	<0.050		0.050	mg/kg	50	5040102	JH	01-Apr-25	8021B	
Ethylbenzene*	<0.050		0.050	mg/kg	50	5040102	JH	01-Apr-25	8021B	
Total Xylenes*	<0.150		0.150	mg/kg	50	5040102	JH	01-Apr-25	8021B	
Total BTEX	<0.300		0.300	mg/kg	50	5040102	JH	01-Apr-25	8021B	

Surrogate: 4-Bromofluorobenzene (PID)			101 %	71.5-134		5040102	JH	01-Apr-25	8021B	
---------------------------------------	--	--	-------	----------	--	---------	----	-----------	-------	--

**Petroleum Hydrocarbons by GC FID**

GRO C6-C10*	<10.0		10.0	mg/kg	1	5033001	MS	31-Mar-25	8015B	
DRO >C10-C28*	<10.0		10.0	mg/kg	1	5033001	MS	31-Mar-25	8015B	
EXT DRO >C28-C36	<10.0		10.0	mg/kg	1	5033001	MS	31-Mar-25	8015B	

Surrogate: 1-Chlorooctane			95.0 %	44.4-145		5033001	MS	31-Mar-25	8015B	
---------------------------	--	--	--------	----------	--	---------	----	-----------	-------	--

Surrogate: 1-Chlorooctadecane			85.5 %	40.6-153		5033001	MS	31-Mar-25	8015B	
-------------------------------	--	--	--------	----------	--	---------	----	-----------	-------	--

Cardinal Laboratories

\*=Accredited Analyte

PLEASE NOTE: Liability and Damages. Cardinal's liability and client's exclusive remedy for any claim arising, whether based in contract or tort, shall be limited to the amount paid by client for analyses. All claims, including those for negligence or any other cause whatsoever shall be deemed waived unless made in writing and received by Cardinal within thirty (30) days after completion of the applicable service. In no event shall Cardinal be liable for incidental or consequential damage including, without limitation, business interruptions, loss of use, or loss of profits incurred by client, its subsidiaries, affiliates or successors arising out of or related to the performance of the services hereunder by Cardinal, regardless of whether such claim is based upon any of the above stated reasons or otherwise. Results relate only to the samples identified above. This report shall not be reproduced except in full with written approval of Cardinal Laboratories.

Celey D. Keene, Lab Director/Quality Manager





PHONE (575) 393-2326 ° 101 E. MARLAND ° HOBBS, NM 88240

**Analytical Results For:**

SAPEC-ECO,LLC  
5846 E 21ST PLACE  
TULSA OK, 74114

Project: LEMANS 2419 ST COM 304H  
Project Number: 4-20  
Project Manager: TOM BYNUM  
Fax To:

Reported:  
04-Apr-25 14:44

8-6"

H251843-08 (Soil)

Analyte	Result	MDL	Reporting Limit	Units	Dilution	Batch	Analyst	Analyzed	Method	Notes
---------	--------	-----	-----------------	-------	----------	-------	---------	----------	--------	-------

**Cardinal Laboratories****Inorganic Compounds**

Chloride	16.0		16.0	mg/kg	4	5033111	CT	31-Mar-25	4500-Cl-B	
----------	------	--	------	-------	---	---------	----	-----------	-----------	--

**Volatile Organic Compounds by EPA Method 8021**

Benzene*	<0.050		0.050	mg/kg	50	5040102	JH	01-Apr-25	8021B	
Toluene*	<0.050		0.050	mg/kg	50	5040102	JH	01-Apr-25	8021B	
Ethylbenzene*	<0.050		0.050	mg/kg	50	5040102	JH	01-Apr-25	8021B	
Total Xylenes*	<0.150		0.150	mg/kg	50	5040102	JH	01-Apr-25	8021B	
Total BTEX	<0.300		0.300	mg/kg	50	5040102	JH	01-Apr-25	8021B	

Surrogate: 4-Bromofluorobenzene (PID)			100 %		71.5-134	5040102	JH	01-Apr-25	8021B	
---------------------------------------	--	--	-------	--	----------	---------	----	-----------	-------	--

**Petroleum Hydrocarbons by GC FID**

GRO C6-C10*	<10.0		10.0	mg/kg	1	5033001	MS	31-Mar-25	8015B	
DRO >C10-C28*	<10.0		10.0	mg/kg	1	5033001	MS	31-Mar-25	8015B	
EXT DRO >C28-C36	<10.0		10.0	mg/kg	1	5033001	MS	31-Mar-25	8015B	

Surrogate: 1-Chlorooctane			94.4 %		44.4-145	5033001	MS	31-Mar-25	8015B	
---------------------------	--	--	--------	--	----------	---------	----	-----------	-------	--

Surrogate: 1-Chlorooctadecane			87.9 %		40.6-153	5033001	MS	31-Mar-25	8015B	
-------------------------------	--	--	--------	--	----------	---------	----	-----------	-------	--

Cardinal Laboratories

\*=Accredited Analyte

PLEASE NOTE: Liability and Damages. Cardinal's liability and client's exclusive remedy for any claim arising, whether based in contract or tort, shall be limited to the amount paid by client for analyses. All claims, including those for negligence or any other cause whatsoever shall be deemed waived unless made in writing and received by Cardinal within thirty (30) days after completion of the applicable service. In no event shall Cardinal be liable for incidental or consequential damage including, without limitation, business interruptions, loss of use, or loss of profits incurred by client, its subsidiaries, affiliates or successors arising out of or related to the performance of the services hereunder by Cardinal, regardless of whether such claim is based upon any of the above stated reasons or otherwise. Results relate only to the samples identified above. This report shall not be reproduced except in full with written approval of Cardinal Laboratories.

Celey D. Keene, Lab Director/Quality Manager



PHONE (575) 393-2326 ° 101 E. MARLAND ° HOBBS, NM 88240

**Analytical Results For:**

SAPEC-ECO,LLC  
5846 E 21ST PLACE  
TULSA OK, 74114

Project: LEMANS 2419 ST COM 304H  
Project Number: 4-20  
Project Manager: TOM BYNUM  
Fax To:

Reported:  
04-Apr-25 14:44

**W1-6"****H251843-09 (Soil)**

Analyte	Result	MDL	Reporting Limit	Units	Dilution	Batch	Analyst	Analyzed	Method	Notes
---------	--------	-----	-----------------	-------	----------	-------	---------	----------	--------	-------

**Cardinal Laboratories****Inorganic Compounds**

<b>Chloride</b>	<b>16.0</b>		16.0	mg/kg	4	5033111	CT	31-Mar-25	4500-Cl-B	
-----------------	-------------	--	------	-------	---	---------	----	-----------	-----------	--

**Volatile Organic Compounds by EPA Method 8021**

Benzene*	<0.050		0.050	mg/kg	50	5040102	JH	01-Apr-25	8021B	
Toluene*	<0.050		0.050	mg/kg	50	5040102	JH	01-Apr-25	8021B	
Ethylbenzene*	<0.050		0.050	mg/kg	50	5040102	JH	01-Apr-25	8021B	
Total Xylenes*	<0.150		0.150	mg/kg	50	5040102	JH	01-Apr-25	8021B	
Total BTEX	<0.300		0.300	mg/kg	50	5040102	JH	01-Apr-25	8021B	

<i>Surrogate: 4-Bromofluorobenzene (PID)</i>			101 %		71.5-134	5040102	JH	01-Apr-25	8021B	
--	--	--	-------	--	----------	---------	----	-----------	-------	--

**Petroleum Hydrocarbons by GC FID**

GRO C6-C10*	<10.0		10.0	mg/kg	1	5033001	MS	31-Mar-25	8015B	
DRO >C10-C28*	<10.0		10.0	mg/kg	1	5033001	MS	31-Mar-25	8015B	
EXT DRO >C28-C36	<10.0		10.0	mg/kg	1	5033001	MS	31-Mar-25	8015B	

<i>Surrogate: 1-Chlorooctane</i>			92.4 %		44.4-145	5033001	MS	31-Mar-25	8015B	
----------------------------------	--	--	--------	--	----------	---------	----	-----------	-------	--

<i>Surrogate: 1-Chlorooctadecane</i>			84.1 %		40.6-153	5033001	MS	31-Mar-25	8015B	
--------------------------------------	--	--	--------	--	----------	---------	----	-----------	-------	--

Cardinal Laboratories

\*=Accredited Analyte

PLEASE NOTE: Liability and Damages. Cardinal's liability and client's exclusive remedy for any claim arising, whether based in contract or tort, shall be limited to the amount paid by client for analyses. All claims, including those for negligence or any other cause whatsoever shall be deemed waived unless made in writing and received by Cardinal within thirty (30) days after completion of the applicable service. In no event shall Cardinal be liable for incidental or consequential damage including, without limitation, business interruptions, loss of use, or loss of profits incurred by client, its subsidiaries, affiliates or successors arising out of or related to the performance of the services hereunder by Cardinal, regardless of whether such claim is based upon any of the above stated reasons or otherwise. Results relate only to the samples identified above. This report shall not be reproduced except in full with written approval of Cardinal Laboratories.

Celey D. Keene, Lab Director/Quality Manager



PHONE (575) 393-2326 ° 101 E. MARLAND ° HOBBS, NM 88240

**Analytical Results For:**

SAPEC-ECO,LLC  
5846 E 21ST PLACE  
TULSA OK, 74114

Project: LEMANS 2419 ST COM 304H  
Project Number: 4-20  
Project Manager: TOM BYNUM  
Fax To:

Reported:  
04-Apr-25 14:44

**W2-6"****H251843-10 (Soil)**

Analyte	Result	MDL	Reporting Limit	Units	Dilution	Batch	Analyst	Analyzed	Method	Notes
---------	--------	-----	-----------------	-------	----------	-------	---------	----------	--------	-------

**Cardinal Laboratories****Inorganic Compounds**

<b>Chloride</b>	<b>32.0</b>		16.0	mg/kg	4	5033111	CT	31-Mar-25	4500-Cl-B	
-----------------	-------------	--	------	-------	---	---------	----	-----------	-----------	--

**Volatile Organic Compounds by EPA Method 8021**

Benzene*	<0.050		0.050	mg/kg	50	5040102	JH	01-Apr-25	8021B	
Toluene*	<0.050		0.050	mg/kg	50	5040102	JH	01-Apr-25	8021B	
Ethylbenzene*	<0.050		0.050	mg/kg	50	5040102	JH	01-Apr-25	8021B	
Total Xylenes*	<0.150		0.150	mg/kg	50	5040102	JH	01-Apr-25	8021B	
Total BTEX	<0.300		0.300	mg/kg	50	5040102	JH	01-Apr-25	8021B	

<i>Surrogate: 4-Bromofluorobenzene (PID)</i>			100 %	71.5-134		5040102	JH	01-Apr-25	8021B	
--	--	--	-------	----------	--	---------	----	-----------	-------	--

**Petroleum Hydrocarbons by GC FID**

GRO C6-C10*	<10.0		10.0	mg/kg	1	5033001	MS	31-Mar-25	8015B	
DRO >C10-C28*	<10.0		10.0	mg/kg	1	5033001	MS	31-Mar-25	8015B	
EXT DRO >C28-C36	<10.0		10.0	mg/kg	1	5033001	MS	31-Mar-25	8015B	

<i>Surrogate: 1-Chlorooctane</i>			94.3 %	44.4-145		5033001	MS	31-Mar-25	8015B	
----------------------------------	--	--	--------	----------	--	---------	----	-----------	-------	--

<i>Surrogate: 1-Chlorooctadecane</i>			87.1 %	40.6-153		5033001	MS	31-Mar-25	8015B	
--------------------------------------	--	--	--------	----------	--	---------	----	-----------	-------	--

Cardinal Laboratories

\*=Accredited Analyte

PLEASE NOTE: Liability and Damages. Cardinal's liability and client's exclusive remedy for any claim arising, whether based in contract or tort, shall be limited to the amount paid by client for analyses. All claims, including those for negligence or any other cause whatsoever shall be deemed waived unless made in writing and received by Cardinal within thirty (30) days after completion of the applicable service. In no event shall Cardinal be liable for incidental or consequential damage including, without limitation, business interruptions, loss of use, or loss of profits incurred by client, its subsidiaries, affiliates or successors arising out of or related to the performance of the services hereunder by Cardinal, regardless of whether such claim is based upon any of the above stated reasons or otherwise. Results relate only to the samples identified above. This report shall not be reproduced except in full with written approval of Cardinal Laboratories.

Celey D. Keene, Lab Director/Quality Manager





PHONE (575) 393-2326 ° 101 E. MARLAND ° HOBBS, NM 88240

**Analytical Results For:**

SAPEC-ECO,LLC  
5846 E 21ST PLACE  
TULSA OK, 74114

Project: LEMANS 2419 ST COM 304H  
Project Number: 4-20  
Project Manager: TOM BYNUM  
Fax To:

Reported:  
04-Apr-25 14:44

**W3-6"****H251843-11 (Soil)**

Analyte	Result	MDL	Reporting Limit	Units	Dilution	Batch	Analyst	Analyzed	Method	Notes
---------	--------	-----	-----------------	-------	----------	-------	---------	----------	--------	-------

**Cardinal Laboratories****Inorganic Compounds**

<b>Chloride</b>	<b>32.0</b>		16.0	mg/kg	4	5033111	CT	31-Mar-25	4500-Cl-B	
-----------------	-------------	--	------	-------	---	---------	----	-----------	-----------	--

**Volatile Organic Compounds by EPA Method 8021**

Benzene*	<0.050	0.050	mg/kg	50	5040102	JH	01-Apr-25	8021B	
Toluene*	<0.050	0.050	mg/kg	50	5040102	JH	01-Apr-25	8021B	
Ethylbenzene*	<0.050	0.050	mg/kg	50	5040102	JH	01-Apr-25	8021B	
Total Xylenes*	<0.150	0.150	mg/kg	50	5040102	JH	01-Apr-25	8021B	
Total BTEX	<0.300	0.300	mg/kg	50	5040102	JH	01-Apr-25	8021B	

<i>Surrogate: 4-Bromofluorobenzene (PID)</i>		102 %		71.5-134	5040102	JH	01-Apr-25	8021B	
--	--	-------	--	----------	---------	----	-----------	-------	--

**Petroleum Hydrocarbons by GC FID**

GRO C6-C10*	<10.0	10.0	mg/kg	1	5033001	MS	31-Mar-25	8015B	
DRO >C10-C28*	<10.0	10.0	mg/kg	1	5033001	MS	31-Mar-25	8015B	
EXT DRO >C28-C36	<10.0	10.0	mg/kg	1	5033001	MS	31-Mar-25	8015B	

<i>Surrogate: 1-Chlorooctane</i>		88.5 %		44.4-145	5033001	MS	31-Mar-25	8015B	
----------------------------------	--	--------	--	----------	---------	----	-----------	-------	--

<i>Surrogate: 1-Chlorooctadecane</i>		83.1 %		40.6-153	5033001	MS	31-Mar-25	8015B	
--------------------------------------	--	--------	--	----------	---------	----	-----------	-------	--

Cardinal Laboratories

\*=Accredited Analyte

PLEASE NOTE: Liability and Damages. Cardinal's liability and client's exclusive remedy for any claim arising, whether based in contract or tort, shall be limited to the amount paid by client for analyses. All claims, including those for negligence or any other cause whatsoever shall be deemed waived unless made in writing and received by Cardinal within thirty (30) days after completion of the applicable service. In no event shall Cardinal be liable for incidental or consequential damage including, without limitation, business interruptions, loss of use, or loss of profits incurred by client, its subsidiaries, affiliates or successors arising out of or related to the performance of the services hereunder by Cardinal, regardless of whether such claim is based upon any of the above stated reasons or otherwise. Results relate only to the samples identified above. This report shall not be reproduced except in full with written approval of Cardinal Laboratories.

Celey D. Keene, Lab Director/Quality Manager



PHONE (575) 393-2326 ° 101 E. MARLAND ° HOBBS, NM 88240

**Analytical Results For:**

SAPEC-ECO,LLC  
5846 E 21ST PLACE  
TULSA OK, 74114

Project: LEMANS 2419 ST COM 304H  
Project Number: 4-20  
Project Manager: TOM BYNUM  
Fax To:

Reported:  
04-Apr-25 14:44

**W4-6"****H251843-12 (Soil)**

Analyte	Result	MDL	Reporting Limit	Units	Dilution	Batch	Analyst	Analyzed	Method	Notes
---------	--------	-----	-----------------	-------	----------	-------	---------	----------	--------	-------

**Cardinal Laboratories****Inorganic Compounds**

<b>Chloride</b>	<b>16.0</b>		16.0	mg/kg	4	5033111	CT	31-Mar-25	4500-Cl-B	
-----------------	-------------	--	------	-------	---	---------	----	-----------	-----------	--

**Volatile Organic Compounds by EPA Method 8021**

Benzene*	<0.050		0.050	mg/kg	50	5040102	JH	01-Apr-25	8021B	
Toluene*	<0.050		0.050	mg/kg	50	5040102	JH	01-Apr-25	8021B	
Ethylbenzene*	<0.050		0.050	mg/kg	50	5040102	JH	01-Apr-25	8021B	
Total Xylenes*	<0.150		0.150	mg/kg	50	5040102	JH	01-Apr-25	8021B	
Total BTEX	<0.300		0.300	mg/kg	50	5040102	JH	01-Apr-25	8021B	

Surrogate: 4-Bromofluorobenzene (PID) 101 % 71.5-134 5040102 JH 01-Apr-25 8021B

**Petroleum Hydrocarbons by GC FID**

GRO C6-C10*	<10.0		10.0	mg/kg	1	5033001	MS	31-Mar-25	8015B	
DRO >C10-C28*	<10.0		10.0	mg/kg	1	5033001	MS	31-Mar-25	8015B	
EXT DRO >C28-C36	<10.0		10.0	mg/kg	1	5033001	MS	31-Mar-25	8015B	

Surrogate: 1-Chlorooctane 96.7 % 44.4-145 5033001 MS 31-Mar-25 8015B

Surrogate: 1-Chlorooctadecane 91.8 % 40.6-153 5033001 MS 31-Mar-25 8015B

Cardinal Laboratories

\*=Accredited Analyte

PLEASE NOTE: Liability and Damages. Cardinal's liability and client's exclusive remedy for any claim arising, whether based in contract or tort, shall be limited to the amount paid by client for analyses. All claims, including those for negligence or any other cause whatsoever shall be deemed waived unless made in writing and received by Cardinal within thirty (30) days after completion of the applicable service. In no event shall Cardinal be liable for incidental or consequential damage including, without limitation, business interruptions, loss of use, or loss of profits incurred by client, its subsidiaries, affiliates or successors arising out of or related to the performance of the services hereunder by Cardinal, regardless of whether such claim is based upon any of the above stated reasons or otherwise. Results relate only to the samples identified above. This report shall not be reproduced except in full with written approval of Cardinal Laboratories.

Celey D. Keene, Lab Director/Quality Manager



PHONE (575) 393-2326 ° 101 E. MARLAND ° HOBBS, NM 88240

**Analytical Results For:**

SAPEC-ECO,LLC  
5846 E 21ST PLACE  
TULSA OK, 74114

Project: LEMANS 2419 ST COM 304H  
Project Number: 4-20  
Project Manager: TOM BYNUM  
Fax To:

Reported:  
04-Apr-25 14:44

**Inorganic Compounds - Quality Control****Cardinal Laboratories**

Analyte	Result	Reporting Limit	Units	Spike Level	Source Result	%REC Limits	RPD	RPD Limit	Notes
<b>Batch 5033111 - 1:4 DI Water</b>									
<b>Blank (5033111-BLK1)</b>				Prepared & Analyzed: 31-Mar-25					
Chloride	ND	16.0	mg/kg						
<b>LCS (5033111-BS1)</b>				Prepared & Analyzed: 31-Mar-25					
Chloride	432	16.0	mg/kg	400		108	80-120		
<b>LCS Dup (5033111-BSD1)</b>				Prepared & Analyzed: 31-Mar-25					
Chloride	432	16.0	mg/kg	400		108	80-120	0.00	20

Cardinal Laboratories

\*=Accredited Analyte

PLEASE NOTE: Liability and Damages. Cardinal's liability and client's exclusive remedy for any claim arising, whether based in contract or tort, shall be limited to the amount paid by client for analyses. All claims, including those for negligence or any other cause whatsoever shall be deemed waived unless made in writing and received by Cardinal within thirty (30) days after completion of the applicable service. In no event shall Cardinal be liable for incidental or consequential damage including, without limitation, business interruptions, loss of use, or loss of profits incurred by client, its subsidiaries, affiliates or successors arising out of or related to the performance of the services hereunder by Cardinal, regardless of whether such claim is based upon any of the above stated reasons or otherwise. Results relate only to the samples identified above. This report shall not be reproduced except in full with written approval of Cardinal Laboratories.

Celey D. Keene, Lab Director/Quality Manager





PHONE (575) 393-2326 • 101 E. MARLAND • HOBBS, NM 88240

**Analytical Results For:**

SAPEC-ECO, LLC  
5846 E 21ST PLACE  
TULSA OK, 74114

Project: LEMANS 2419 ST COM 304H  
Project Number: 4-20  
Project Manager: TOM BYNUM  
Fax To:

Reported:  
04-Apr-25 14:44

**Volatile Organic Compounds by EPA Method 8021 - Quality Control****Cardinal Laboratories**

Analyte	Result	Reporting Limit	Units	Spike Level	Source Result	%REC	%REC Limits	RPD	RPD Limit	Notes
---------	--------	-----------------	-------	-------------	---------------	------	-------------	-----	-----------	-------

**Batch 5033108 - Volatiles****Blank (5033108-BLK1)**

Prepared &amp; Analyzed: 31-Mar-25

Benzene	ND	0.050	mg/kg							
Toluene	ND	0.050	mg/kg							
Ethylbenzene	ND	0.050	mg/kg							
Total Xylenes	ND	0.150	mg/kg							
Total BTEX	ND	0.300	mg/kg							
Surrogate: 4-Bromofluorobenzene (PID)	0.0675		mg/kg	0.0500		135	71.5-134			S-04

**LCS (5033108-BS1)**

Prepared &amp; Analyzed: 31-Mar-25

Benzene	2.02	0.050	mg/kg	2.00		101	82.8-130			
Toluene	2.35	0.050	mg/kg	2.00		118	86-128			
Ethylbenzene	2.62	0.050	mg/kg	2.00		131	85.9-128			BS1
m,p-Xylene	5.54	0.100	mg/kg	4.00		138	89-129			BS1
o-Xylene	2.76	0.050	mg/kg	2.00		138	86.1-125			BS1
Total Xylenes	8.30	0.150	mg/kg	6.00		138	88.2-128			BS1
Surrogate: 4-Bromofluorobenzene (PID)	0.0574		mg/kg	0.0500		115	71.5-134			

**LCS Dup (5033108-BS1)**

Prepared &amp; Analyzed: 31-Mar-25

Benzene	1.94	0.050	mg/kg	2.00		96.9	82.8-130	4.31	15.8	
Toluene	2.36	0.050	mg/kg	2.00		118	86-128	0.253	15.9	
Ethylbenzene	2.61	0.050	mg/kg	2.00		131	85.9-128	0.267	16	BS1
m,p-Xylene	5.52	0.100	mg/kg	4.00		138	89-129	0.406	16.2	BS1
o-Xylene	2.79	0.050	mg/kg	2.00		139	86.1-125	1.05	16.7	BS1
Total Xylenes	8.31	0.150	mg/kg	6.00		138	88.2-128	0.0791	16.3	BS1
Surrogate: 4-Bromofluorobenzene (PID)	0.0613		mg/kg	0.0500		123	71.5-134			

**Batch 5040102 - Volatiles****Blank (5040102-BLK1)**

Prepared &amp; Analyzed: 01-Apr-25

Benzene	ND	0.050	mg/kg							
Toluene	ND	0.050	mg/kg							
Ethylbenzene	ND	0.050	mg/kg							
Total Xylenes	ND	0.150	mg/kg							

Cardinal Laboratories

\*=Accredited Analyte

PLEASE NOTE: Liability and Damages. Cardinal's liability and client's exclusive remedy for any claim arising, whether based in contract or tort, shall be limited to the amount paid by client for analyses. All claims, including those for negligence or any other cause whatsoever shall be deemed waived unless made in writing and received by Cardinal within thirty (30) days after completion of the applicable service. In no event shall Cardinal be liable for incidental or consequential damage including, without limitation, business interruptions, loss of use, or loss of profits incurred by client, its subsidiaries, affiliates or successors arising out of or related to the performance of the services hereunder by Cardinal, regardless of whether such claim is based upon any of the above stated reasons or otherwise. Results relate only to the samples identified above. This report shall not be reproduced except in full with written approval of Cardinal Laboratories.

Celey D. Keene, Lab Director/Quality Manager



PHONE (575) 393-2326 • 101 E. MARLAND • HOBBS, NM 88240

**Analytical Results For:**

SAPEC-ECO,LLC  
5846 E 21ST PLACE  
TULSA OK, 74114

Project: LEMANS 2419 ST COM 304H  
Project Number: 4-20  
Project Manager: TOM BYNUM  
Fax To:

Reported:  
04-Apr-25 14:44

**Volatile Organic Compounds by EPA Method 8021 - Quality Control****Cardinal Laboratories**

Analyte	Result	Reporting Limit	Units	Spike Level	Source Result	%REC	%REC Limits	RPD	RPD Limit	Notes
---------	--------	-----------------	-------	-------------	---------------	------	-------------	-----	-----------	-------

**Batch 5040102 - Volatiles****Blank (5040102-BLK1)**

Prepared &amp; Analyzed: 01-Apr-25

Total BTEX	ND	0.300	mg/kg							
Surrogate: 4-Bromofluorobenzene (PID)	ND		mg/kg	0.0500		99.7	71.5-134			

**LCS (5040102-BS1)**

Prepared &amp; Analyzed: 01-Apr-25

Benzene	2.12	0.050	mg/kg	2.00		106	82.8-130			
Toluene	2.15	0.050	mg/kg	2.00		107	86-128			
Ethylbenzene	2.07	0.050	mg/kg	2.00		104	85.9-128			
m,p-Xylene	4.09	0.100	mg/kg	4.00		102	89-129			
o-Xylene	2.02	0.050	mg/kg	2.00		101	86.1-125			
Total Xylenes	6.10	0.150	mg/kg	6.00		102	88.2-128			
Surrogate: 4-Bromofluorobenzene (PID)	0.0487		mg/kg	0.0500		97.4	71.5-134			

**LCS Dup (5040102-BS1)**

Prepared &amp; Analyzed: 01-Apr-25

Benzene	2.09	0.050	mg/kg	2.00		104	82.8-130	1.56	15.8	
Toluene	2.11	0.050	mg/kg	2.00		106	86-128	1.55	15.9	
Ethylbenzene	2.03	0.050	mg/kg	2.00		102	85.9-128	2.14	16	
m,p-Xylene	4.00	0.100	mg/kg	4.00		100	89-129	2.16	16.2	
o-Xylene	1.97	0.050	mg/kg	2.00		98.5	86.1-125	2.30	16.7	
Total Xylenes	5.97	0.150	mg/kg	6.00		99.5	88.2-128	2.21	16.3	
Surrogate: 4-Bromofluorobenzene (PID)	0.0482		mg/kg	0.0500		96.4	71.5-134			

Cardinal Laboratories

\*=Accredited Analyte

PLEASE NOTE: Liability and Damages. Cardinal's liability and client's exclusive remedy for any claim arising, whether based in contract or tort, shall be limited to the amount paid by client for analyses. All claims, including those for negligence or any other cause whatsoever shall be deemed waived unless made in writing and received by Cardinal within thirty (30) days after completion of the applicable service. In no event shall Cardinal be liable for incidental or consequential damage including, without limitation, business interruptions, loss of use, or loss of profits incurred by client, its subsidiaries, affiliates or successors arising out of or related to the performance of the services hereunder by Cardinal, regardless of whether such claim is based upon any of the above stated reasons or otherwise. Results relate only to the samples identified above. This report shall not be reproduced except in full with written approval of Cardinal Laboratories.

Celey D. Keene, Lab Director/Quality Manager



PHONE (575) 393-2326 • 101 E. MARLAND • HOBBS, NM 88240

**Analytical Results For:**

SAPEC-ECO, LLC  
5846 E 21ST PLACE  
TULSA OK, 74114

Project: LEMANS 2419 ST COM 304H  
Project Number: 4-20  
Project Manager: TOM BYNUM  
Fax To:

Reported:  
04-Apr-25 14:44

**Petroleum Hydrocarbons by GC FID - Quality Control****Cardinal Laboratories**

Analyte	Result	Reporting Limit	Units	Spike Level	Source Result	%REC	%REC Limits	RPD	RPD Limit	Notes
---------	--------	--------------------	-------	----------------	------------------	------	----------------	-----	--------------	-------

**Batch 5033001 - General Prep - Organics****Blank (5033001-BLK1)**

Prepared: 30-Mar-25 Analyzed: 31-Mar-25

GRO C6-C10	ND	10.0	mg/kg							
DRO >C10-C28	ND	10.0	mg/kg							
EXT DRO >C28-C36	ND	10.0	mg/kg							
Surrogate: 1-Chlorooctane	48.1		mg/kg	50.0		96.3	44.4-145			
Surrogate: 1-Chlorooctadecane	44.3		mg/kg	50.0		88.7	40.6-153			

**LCS (5033001-BS1)**

Prepared: 30-Mar-25 Analyzed: 31-Mar-25

GRO C6-C10	231	10.0	mg/kg	200		115	81.5-123			
DRO >C10-C28	219	10.0	mg/kg	200		110	77.7-122			
Total TPH C6-C28	450	10.0	mg/kg	400		112	80.9-121			
Surrogate: 1-Chlorooctane	59.9		mg/kg	50.0		120	44.4-145			
Surrogate: 1-Chlorooctadecane	56.2		mg/kg	50.0		112	40.6-153			

**LCS Dup (5033001-BS1)**

Prepared: 30-Mar-25 Analyzed: 31-Mar-25

GRO C6-C10	219	10.0	mg/kg	200		109	81.5-123	5.23	13	
DRO >C10-C28	208	10.0	mg/kg	200		104	77.7-122	5.13	15.6	
Total TPH C6-C28	427	10.0	mg/kg	400		107	80.9-121	5.18	18.5	
Surrogate: 1-Chlorooctane	53.1		mg/kg	50.0		106	44.4-145			
Surrogate: 1-Chlorooctadecane	50.6		mg/kg	50.0		101	40.6-153			

Cardinal Laboratories

\*=Accredited Analyte

PLEASE NOTE: Liability and Damages. Cardinal's liability and client's exclusive remedy for any claim arising, whether based in contract or tort, shall be limited to the amount paid by client for analyses. All claims, including those for negligence or any other cause whatsoever shall be deemed waived unless made in writing and received by Cardinal within thirty (30) days after completion of the applicable service. In no event shall Cardinal be liable for incidental or consequential damage including, without limitation, business interruptions, loss of use, or loss of profits incurred by client, its subsidiaries, affiliates or successors arising out of or related to the performance of the services hereunder by Cardinal, regardless of whether such claim is based upon any of the above stated reasons or otherwise. Results relate only to the samples identified above. This report shall not be reproduced except in full with written approval of Cardinal Laboratories.

Celey D. Keene, Lab Director/Quality Manager





---

PHONE (575) 393-2326 ° 101 E. MARLAND ° HOBBS, NM 88240

---

### Notes and Definitions

S-04	The surrogate recovery for this sample is outside of established control limits due to a sample matrix effect.
BS1	Blank spike recovery above laboratory acceptance criteria. Results for analyte potentially biased high.
ND	Analyte NOT DETECTED at or above the reporting limit
RPD	Relative Percent Difference
**	Samples not received at proper temperature of 6°C or below.
***	Insufficient time to reach temperature.
-	Chloride by SM4500Cl-B does not require samples be received at or below 6°C Samples reported on an as received basis (wet) unless otherwise noted on report

---

Cardinal Laboratories

\*=Accredited Analyte

PLEASE NOTE: Liability and Damages. Cardinal's liability and client's exclusive remedy for any claim arising, whether based in contract or tort, shall be limited to the amount paid by client for analyses. All claims, including those for negligence or any other cause whatsoever shall be deemed waived unless made in writing and received by Cardinal within thirty (30) days after completion of the applicable service. In no event shall Cardinal be liable for incidental or consequential damage including, without limitation, business interruptions, loss of use, or loss of profits incurred by client, its subsidiaries, affiliates or successors arising out of or related to the performance of the services hereunder by Cardinal, regardless of whether such claim is based upon any of the above stated reasons or otherwise. Results relate only to the samples identified above. This report shall not be reproduced except in full with written approval of Cardinal Laboratories.

A handwritten signature in black ink, appearing to read "C. D. Keene".

---

Celey D. Keene, Lab Director/Quality Manager



# CHAIN-OF-CUSTODY AND ANALYSIS REQUEST

101 East Marland, Hobbs, NM 88240  
(575) 393-2326 FAX (575) 393-2476

Company Name: Sapec-Eco, LLC				<b>BILL TO</b>				<b>ANALYSIS REQUEST</b>																							
Project Manager: Tom Bynum - tombynum@sapec-eco.com				P.O. #:				<div style="display: flex; flex-direction: column; align-items: center;"> <div>BTEX (8021B)</div> <div>TPH (8015M)</div> <div>Chlorides (SM4500Cl-B)</div> </div>																							
Address: 5846 E 21st Place				Company: Permian Resources																											
City: Tulsa State: OK Zip: 74114				Attn:																											
Phone #: 641-821-9018 Fax #:				Address:																											
Project #: 4-20 Project Owner: Permian Resources				City:																											
Project Name: Lemans 2419 St Com 304H - nAPP2506641719				State: Zip:																											
Project Location: Eddy County, NM				Phone #:																											
Sampler Name: Scott Henson				Fax #:																											
FOR LAB USE ONLY																															
Lab I.D.		Sample I.D.		(G)RAB OR (C)OMP. # CONTAINERS		MATRIX														PRESERV.		SAMPLING									
						GROUNDWATER																									
						WASTEWATER																									
						SOIL																									
						OIL																									
						SLUDGE																									
						OTHER :																									
						ACID/BASE:																									
						ICE / COOL																									
						OTHER :																									
										DATE		TIME																			
H251843				C 1								3/18/25		4pm																	
1		1-6"				X						X		X																	
2		2-6"												X																	
3		3-6"												X																	
4		4-6"																													
5		5-6"																													
6		6-6"																													
7		7-6"																													
8		8-6"																													
9		W1-6"																													
10		W2-6"																													

PLEASE NOTE: Liability and Damages. Cardinal's liability and client's exclusive remedy for any claim arising whether based in contract or tort, shall be limited to the amount paid by the client for the analyses. All claims including those for negligence and any other cause whatsoever shall be deemed waived unless made in writing and received by Cardinal within 30 days after completion of the applicable service. In no event shall Cardinal be liable for incidental or consequential damages, including without limitation, business interruptions, loss of use, or loss of profits incurred by client, its subsidiaries, affiliates or successors arising out of or related to the performance of services hereunder by Cardinal, regardless of whether such claim is based upon any of the above stated reasons or otherwise.

Relinquished By:		Date: 3-28-25		Received By:		Phone Result: <input type="checkbox"/> Yes <input type="checkbox"/> No Add'l Phone #:	
Time: 9:03						Fax Result: <input type="checkbox"/> Yes <input type="checkbox"/> No Add'l Fax #:	
Relinquished By:		Date:		Received By:		REMARKS:	
Time:						Bill to Permian Resources TAT - Standard	
Delivered By: (Circle One) S.I. / C+0.8-				Sample Condition		CHECKED BY: (Initials)	
Sampler - UPS - Bus - Other: S.I. / #40				Cool Intact <input checked="" type="checkbox"/> Yes <input type="checkbox"/> No		AP	





# CHAIN-OF-CUSTODY AND ANALYSIS REQUEST

101 East Marland, Hobbs, NM 88240  
(575) 393-2326 FAX (575) 393-2476

Company Name: Sapec-Eco, LLC				<b>BILL TO</b>				<b>ANALYSIS REQUEST</b>																					
Project Manager: Tom Bynum - tombynum@sapec-eco.com				P.O. #:				<div style="display: flex; flex-direction: column; align-items: center;"> <div>BTEX (8021B)</div> <div>TPH (8015M)</div> <div>Chlorides (SM4500Cl-B)</div> </div>																					
Address: 5846 E 21st Place				Company: Permian Resources																									
City: Tulsa State: OK Zip: 74114				Attn:																									
Phone #: 641-821-9018 Fax #:				Address:																									
Project #: 4-20 Project Owner: Permian Resources				City:																									
Project Name: Lemans 2419 St Com 304H - nAPP2506641719				State: Zip:																									
Project Location: Eddy County, NM				Phone #:																									
Sampler Name: Scott Henson				Fax #:																									
FOR LAB USE ONLY				MATRIX		PRESERV.		SAMPLING																					
Lab I.D.	Sample I.D.	(G)RAB OR (C)OMP.	# CONTAINERS	GROUNDWATER	WASTEWATER	SOIL	OIL	SLUDGE	OTHER:	ACID/BASE:	ICE / COOL	OTHER:	DATE	TIME															
H85843																													
11	W3-6"	1				X				X			3-27	529p	X	X	X												
12	W4-6"													537p															

PLEASE NOTE: Liability and Damages. Cardinal's liability and client's exclusive remedy for any claim arising whether based in contract or tort, shall be limited to the amount paid by the client for the analyses. All claims including those for negligence and any other cause whatsoever shall be deemed waived unless made in writing and received by Cardinal within 30 days after completion of the applicable service. In no event shall Cardinal be liable for incidental or consequential damages, including without limitation, business interruptions, loss of use, or loss of profits incurred by client, its subsidiaries, affiliates or successors arising out of or related to the performance of services hereunder by Cardinal, regardless of whether such claim is based upon any of the above stated reasons or otherwise.

Relinquished By:	Date: 3-28-25	Received By:	Phone Result: <input type="checkbox"/> Yes <input type="checkbox"/> No	Add'l Phone #:
Relinquished By:	Time: 9:03	Received By:	Fax Result: <input type="checkbox"/> Yes <input type="checkbox"/> No	Add'l Fax #:
Delivered By: (Circle One) S.I. / C.W. B.	Date:	Sample Condition	REMARKS:	
Sampler - UPS - Bus - Other: S.I. / #140	Time:	Cool Intact	Bill to Permian Resources	
		<input checked="" type="checkbox"/> Yes <input type="checkbox"/> No	TAT - Standard	
		<input type="checkbox"/> No <input type="checkbox"/> No		
		CHECKED BY: (Initials)		





PHONE (575) 393-2326 ° 101 E. MARLAND ° HOBBS, NM 88240

July 17, 2025

TOM BYNUM

SAPEC-ECO,LLC

5846 E 21ST PLACE

TULSA, OK 74114

RE: LEMANS 2419 ST COM 304H

Enclosed are the results of analyses for samples received by the laboratory on 07/11/25 8:00.

Cardinal Laboratories is accredited through Texas NELAP under certificate number TX-C25-00101. Accreditation applies to drinking water, non-potable water and solid and chemical materials. All accredited analytes are denoted by an asterisk (\*). For a complete list of accredited analytes and matrices visit the TCEQ website at [www.tceq.texas.gov/field/qa/lab\\_accred\\_certif.html](http://www.tceq.texas.gov/field/qa/lab_accred_certif.html).

Cardinal Laboratories is accredited through the State of Colorado Department of Public Health and Environment for:

Method EPA 552.2	Haloacetic Acids (HAA-5)
Method EPA 524.2	Total Trihalomethanes (TTHM)
Method EPA 524.4	Regulated VOCs (V1, V2, V3)

Accreditation applies to public drinking water matrices.

This report meets NELAP requirements and is made up of a cover page, analytical results, and a copy of the original chain-of-custody. If you have any questions concerning this report, please feel free to contact me.

Sincerely,

A handwritten signature in black ink that reads "Celey D. Keene". The signature is written in a cursive, flowing style.

Celey D. Keene

Lab Director/Quality Manager



PHONE (575) 393-2326 ° 101 E. MARLAND ° HOBBS, NM 88240

**Analytical Results For:**

SAPEC-ECO,LLC  
TOM BYNUM  
5846 E 21ST PLACE  
TULSA OK, 74114  
Fax To:

Received: 07/11/2025  
Reported: 07/17/2025  
Project Name: LEMANS 2419 ST COM 304H  
Project Number: 4-20  
Project Location: PERMIAN-EDDY COUNTY, NM

Sampling Date: 07/10/2025  
Sampling Type: Soil  
Sampling Condition: Cool & Intact  
Sample Received By: Shari Cisneros

**Sample ID: BACKFILL 1 (H254135-01)**

BTX 8021B		mg/kg		Analyzed By: JH					
Analyte	Result	Reporting Limit	Analyzed	Method Blank	BS	% Recovery	True Value QC	RPD	Qualifier
Benzene*	<0.050	0.050	07/12/2025	ND	1.95	97.7	2.00	3.91	
Toluene*	<0.050	0.050	07/12/2025	ND	2.09	104	2.00	3.46	
Ethylbenzene*	<0.050	0.050	07/12/2025	ND	1.92	96.2	2.00	3.60	
Total Xylenes*	<0.150	0.150	07/12/2025	ND	5.81	96.8	6.00	4.33	
Total BTX	<0.300	0.300	07/12/2025	ND					

Surrogate: 4-Bromofluorobenzene (PID) 100 % 71.5-134

Chloride, SM4500Cl-B		mg/kg		Analyzed By: KH						
Analyte	Result	Reporting Limit	Analyzed	Method Blank	BS	% Recovery	True Value QC	RPD	Qualifier	
Chloride	<16.0	16.0	07/14/2025	ND	416	104	400	0.00		

TPH 8015M		mg/kg		Analyzed By: MS					
Analyte	Result	Reporting Limit	Analyzed	Method Blank	BS	% Recovery	True Value QC	RPD	Qualifier
GRO C6-C10*	<10.0	10.0	07/11/2025	ND	224	112	200	1.82	
DRO >C10-C28*	<10.0	10.0	07/11/2025	ND	218	109	200	2.70	
EXT DRO >C28-C36	<10.0	10.0	07/11/2025	ND					

Surrogate: 1-Chlorooctane 87.3 % 44.4-145

Surrogate: 1-Chlorooctadecane 81.0 % 40.6-153

Cardinal Laboratories

\*=Accredited Analyte

PLEASE NOTE: Liability and Damages. Cardinal's liability and client's exclusive remedy for any claim arising, whether based in contract or tort, shall be limited to the amount paid by client for analyses. All claims, including those for negligence and any other cause whatsoever shall be deemed waived unless made in writing and received by Cardinal within thirty (30) days after completion of the applicable service. In no event shall Cardinal be liable for incidental or consequential damages, including, without limitation, business interruptions, loss of use, or loss of profits incurred by client, its subsidiaries, affiliates or successors arising out of or related to the performance of the services hereunder by Cardinal, regardless of whether such claim is based upon any of the above stated reasons or otherwise. Results relate only to the samples identified above. This report shall not be reproduced except in full with written approval of Cardinal Laboratories.

Celey D. Keene, Lab Director/Quality Manager



PHONE (575) 393-2326 ° 101 E. MARLAND ° HOBBS, NM 88240

**Analytical Results For:**

SAPEC-ECO,LLC  
TOM BYNUM  
5846 E 21ST PLACE  
TULSA OK, 74114  
Fax To:

Received: 07/11/2025  
Reported: 07/17/2025  
Project Name: LEMANS 2419 ST COM 304H  
Project Number: 4-20  
Project Location: PERMIAN-EDDY COUNTY, NM

Sampling Date: 07/10/2025  
Sampling Type: Soil  
Sampling Condition: Cool & Intact  
Sample Received By: Shari Cisneros

**Sample ID: BACKFILL 2 (H254135-02)**

BTEx 8021B		mg/kg		Analyzed By: JH						
Analyte	Result	Reporting Limit	Analyzed	Method Blank	BS	% Recovery	True Value QC	RPD	Qualifier	
Benzene*	<0.050	0.050	07/12/2025	ND	1.95	97.7	2.00	3.91		
Toluene*	<0.050	0.050	07/12/2025	ND	2.09	104	2.00	3.46		
Ethylbenzene*	<0.050	0.050	07/12/2025	ND	1.92	96.2	2.00	3.60		
Total Xylenes*	<0.150	0.150	07/12/2025	ND	5.81	96.8	6.00	4.33		
Total BTEx	<0.300	0.300	07/12/2025	ND						

Surrogate: 4-Bromofluorobenzene (PID) 99.9 % 71.5-134

Chloride, SM4500CI-B		mg/kg		Analyzed By: KH						
Analyte	Result	Reporting Limit	Analyzed	Method Blank	BS	% Recovery	True Value QC	RPD	Qualifier	
Chloride	<16.0	16.0	07/14/2025	ND	416	104	400	0.00		

TPH 8015M		mg/kg		Analyzed By: MS					
Analyte	Result	Reporting Limit	Analyzed	Method Blank	BS	% Recovery	True Value QC	RPD	Qualifier
GRO C6-C10*	<10.0	10.0	07/11/2025	ND	224	112	200	1.82	
DRO >C10-C28*	<10.0	10.0	07/11/2025	ND	218	109	200	2.70	
EXT DRO >C28-C36	<10.0	10.0	07/11/2025	ND					

Surrogate: 1-Chlorooctane 91.1 % 44.4-145

Surrogate: 1-Chlorooctadecane 84.6 % 40.6-153

Cardinal Laboratories

\*=Accredited Analyte

PLEASE NOTE: Liability and Damages. Cardinal's liability and client's exclusive remedy for any claim arising, whether based in contract or tort, shall be limited to the amount paid by client for analyses. All claims, including those for negligence and any other cause whatsoever shall be deemed waived unless made in writing and received by Cardinal within thirty (30) days after completion of the applicable service. In no event shall Cardinal be liable for incidental or consequential damages, including, without limitation, business interruptions, loss of use, or loss of profits incurred by client, its subsidiaries, affiliates or successors arising out of or related to the performance of the services hereunder by Cardinal, regardless of whether such claim is based upon any of the above stated reasons or otherwise. Results relate only to the samples identified above. This report shall not be reproduced except in full with written approval of Cardinal Laboratories.

Celey D. Keene, Lab Director/Quality Manager





PHONE (575) 393-2326 ° 101 E. MARLAND ° HOBBS, NM 88240

### Notes and Definitions

ND	Analyte NOT DETECTED at or above the reporting limit
RPD	Relative Percent Difference
**	Samples not received at proper temperature of 6°C or below.
***	Insufficient time to reach temperature.
-	Chloride by SM4500Cl-B does not require samples be received at or below 6°C Samples reported on an as received basis (wet) unless otherwise noted on report

Cardinal Laboratories

\*=Accredited Analyte

PLEASE NOTE: Liability and Damages. Cardinal's liability and client's exclusive remedy for any claim arising, whether based in contract or tort, shall be limited to the amount paid by client for analyses. All claims, including those for negligence and any other cause whatsoever shall be deemed waived unless made in writing and received by Cardinal within thirty (30) days after completion of the applicable service. In no event shall Cardinal be liable for incidental or consequential damages, including, without limitation, business interruptions, loss of use, or loss of profits incurred by client, its subsidiaries, affiliates or successors arising out of or related to the performance of the services hereunder by Cardinal, regardless of whether such claim is based upon any of the above stated reasons or otherwise. Results relate only to the samples identified above. This report shall not be reproduced except in full with written approval of Cardinal Laboratories.

A handwritten signature in black ink, appearing to read "Celey D. Keene".

Celey D. Keene, Lab Director/Quality Manager

101 East Marland, Hobbs, NM 88240  
(575) 393-2326 FAX (575) 393-2476

PLEASE NOTE: Liability and Damages. Cardinal's liability and client's exclusive remedy for any claim arising whether based in contract or tort, shall be limited to the amount paid by the client for the analyses. All claims, including those for negligence and any other cause whatsoever shall be deemed waived unless made in writing and received by Cardinal within 30 days after completion of the applicable service. In no event shall Cardinal be liable for incidental or consequential damages, including without limitation, business interruptions, loss of use, or loss of profits incurred by client, its subsidiaries, affiliates or successors arising out of or related to the performance of services hereunder by Cardinal, regardless of whether such claim is based upon any of the above stated reasons or otherwise.

+ Cardinal cannot accept verbal changes. Please fax written changes to (575) 393-2326

Sante Fe Main Office  
Phone: (505) 476-3441

General Information  
Phone: (505) 629-6116

Online Phone Directory  
<https://www.emnrd.nm.gov/ocd/contact-us>

**State of New Mexico**  
**Energy, Minerals and Natural Resources**  
**Oil Conservation Division**  
**1220 S. St Francis Dr.**  
**Santa Fe, NM 87505**

QUESTIONS

Action 492791

**QUESTIONS**

Operator: Permian Resources Operating, LLC 300 N. Marienfeld St Ste 1000 Midland, TX 79701	OGRID: 372165
	Action Number: 492791
	Action Type: [C-141] Reclamation Report C-141 (C-141-v-Reclamation)

**QUESTIONS**

<b>Prerequisites</b>	
Incident ID (n#)	nAPP2506641719
Incident Name	NAPP2506641719 LEMANS 2419 ST COM 304H @ 30-015-49939
Incident Type	Oil Release
Incident Status	Reclamation Report Received
Incident Well	[30-015-49939] LE MANS 2419 STATE COM #304H

**Location of Release Source***Please answer all the questions in this group.*

Site Name	LEMANS 2419 ST COM 304H
Date Release Discovered	02/21/2025
Surface Owner	State

**Incident Details***Please answer all the questions in this group.*

Incident Type	Oil Release
Did this release result in a fire or is the result of a fire	Yes
Did this release result in any injuries	No
Has this release reached or does it have a reasonable probability of reaching a watercourse	No
Has this release endangered or does it have a reasonable probability of endangering public health	No
Has this release substantially damaged or will it substantially damage property or the environment	No
Is this release of a volume that is or may with reasonable probability be detrimental to fresh water	No

**Nature and Volume of Release***Material(s) released, please answer all that apply below. Any calculations or specific justifications for the volumes provided should be attached to the follow-up C-141 submission.*

Crude Oil Released (bbls) Details	Cause: Equipment Failure   Dump Valve   Crude Oil   Released: 4 BBL   Recovered: 0 BBL   Lost: 4 BBL.
Produced Water Released (bbls) Details	Not answered.
Is the concentration of chloride in the produced water >10,000 mg/l	No
Condensate Released (bbls) Details	Not answered.
Natural Gas Vented (Mcf) Details	Not answered.
Natural Gas Flared (Mcf) Details	Not answered.
Other Released Details	Not answered.
Are there additional details for the questions above (i.e. any answer containing Other, Specify, Unknown, and/or Fire, or any negative lost amounts)	Not answered.



Sante Fe Main Office  
Phone: (505) 476-3441

General Information  
Phone: (505) 629-6116

Online Phone Directory  
<https://www.emnrd.nm.gov/ocd/contact-us>

**State of New Mexico**  
**Energy, Minerals and Natural Resources**  
**Oil Conservation Division**  
**1220 S. St Francis Dr.**  
**Santa Fe, NM 87505**

QUESTIONS, Page 2

Action 492791

**QUESTIONS (continued)**

Operator: Permian Resources Operating, LLC 300 N. Marienfeld St Ste 1000 Midland, TX 79701	OGRID: 372165
	Action Number: 492791
	Action Type: [C-141] Reclamation Report C-141 (C-141-v-Reclamation)

**QUESTIONS**

<b>Nature and Volume of Release (continued)</b>	
Is this a gas only submission (i.e. only significant Mcf values reported)	<b>More info needed to determine if this will be treated as a "gas only" report.</b>
Was this a major release as defined by Subsection A of 19.15.29.7 NMAC	<b>Yes</b>
Reasons why this would be considered a submission for a notification of a major release	<b>From paragraph A. "Major release" determine using: (2) an unauthorized release of a volume that: (a) results in a fire or is the result of a fire.</b>
<i>With the implementation of the 19.15.27 NMAC (05/25/2021), venting and/or flaring of natural gas (i.e. gas only) are to be submitted on the C-129 form.</i>	

**Initial Response**

*The responsible party must undertake the following actions immediately unless they could create a safety hazard that would result in injury.*

The source of the release has been stopped	<b>True</b>
The impacted area has been secured to protect human health and the environment	<b>True</b>
Released materials have been contained via the use of berms or dikes, absorbent pads, or other containment devices	<b>True</b>
All free liquids and recoverable materials have been removed and managed appropriately	<b>True</b>
If all the actions described above have not been undertaken, explain why	<b>Not answered.</b>

*Per Paragraph (4) of Subsection B of 19.15.29.8 NMAC the responsible party may commence remediation immediately after discovery of a release. If remediation has begun, please prepare and attach a narrative of actions to date in the follow-up C-141 submission. If remedial efforts have been successfully completed or if the release occurred within a lined containment area (see Subparagraph (a) of Paragraph (5) of Subsection A of 19.15.29.11 NMAC), please prepare and attach all information needed for closure evaluation in the follow-up C-141 submission.*

I hereby certify that the information given above is true and complete to the best of my knowledge and understand that pursuant to OCD rules and regulations all operators are required to report and/or file certain release notifications and perform corrective actions for releases which may endanger public health or the environment. The acceptance of a C-141 report by the OCD does not relieve the operator of liability should their operations have failed to adequately investigate and remediate contamination that pose a threat to groundwater, surface water, human health or the environment. In addition, OCD acceptance of a C-141 report does not relieve the operator of responsibility for compliance with any other federal, state, or local laws and/or regulations.

I hereby agree and sign off to the above statement	<b>Name: Matthew Taylor</b> <b>Title: Environmental Coordinator</b> <b>Email: matthew.taylor@permianres.com</b> <b>Date: 08/06/2025</b>
--	--

Sante Fe Main Office  
Phone: (505) 476-3441

General Information  
Phone: (505) 629-6116

Online Phone Directory  
<https://www.emnrd.nm.gov/ocd/contact-us>

**State of New Mexico**  
**Energy, Minerals and Natural Resources**  
**Oil Conservation Division**  
**1220 S. St Francis Dr.**  
**Santa Fe, NM 87505**

QUESTIONS, Page 3

Action 492791

**QUESTIONS (continued)**

Operator: Permian Resources Operating, LLC 300 N. Marienfeld St Ste 1000 Midland, TX 79701	OGRID: 372165
	Action Number: 492791
	Action Type: [C-141] Reclamation Report C-141 (C-141-v-Reclamation)

**QUESTIONS**

<b>Site Characterization</b>	
<i>Please answer all the questions in this group (only required when seeking remediation plan approval and beyond). This information must be provided to the appropriate district office no later than 90 days after the release discovery date.</i>	
What is the shallowest depth to groundwater beneath the area affected by the release in feet below ground surface (ft bgs)	Between 100 and 500 (ft.)
What method was used to determine the depth to ground water	NM OSE iWaters Database Search
Did this release impact groundwater or surface water	No
<b>What is the minimum distance, between the closest lateral extents of the release and the following surface areas:</b>	
A continuously flowing watercourse or any other significant watercourse	Between 1000 (ft.) and ½ (mi.)
Any lakebed, sinkhole, or playa lake (measured from the ordinary high-water mark)	Between 1 and 5 (mi.)
An occupied permanent residence, school, hospital, institution, or church	Between 1 and 5 (mi.)
A spring or a private domestic fresh water well used by less than five households for domestic or stock watering purposes	Between 1 and 5 (mi.)
Any other fresh water well or spring	Between 1 and 5 (mi.)
Incorporated municipal boundaries or a defined municipal fresh water well field	Greater than 5 (mi.)
A wetland	Between ½ and 1 (mi.)
A subsurface mine	Greater than 5 (mi.)
An (non-karst) unstable area	Between 1 and 5 (mi.)
Categorize the risk of this well / site being in a karst geology	High
A 100-year floodplain	Between ½ and 1 (mi.)
Did the release impact areas not on an exploration, development, production, or storage site	Yes

<b>Remediation Plan</b>	
<i>Please answer all the questions that apply or are indicated. This information must be provided to the appropriate district office no later than 90 days after the release discovery date.</i>	
Requesting a remediation plan approval with this submission	Yes
<i>Attach a comprehensive report demonstrating the lateral and vertical extents of soil contamination associated with the release have been determined, pursuant to 19.15.29.11 NMAC and 19.15.29.13 NMAC.</i>	
Have the lateral and vertical extents of contamination been fully delineated	Yes
Was this release entirely contained within a lined containment area	No
<b>Soil Contamination Sampling:</b> (Provide the highest observable value for each, in milligrams per kilograms.)	
Chloride (EPA 300.0 or SM4500 Cl B)	32
TPH (GRO+DRO+MRO) (EPA SW-846 Method 8015M)	0
GRO+DRO (EPA SW-846 Method 8015M)	0
BTEX (EPA SW-846 Method 8021B or 8260B)	0
Benzene (EPA SW-846 Method 8021B or 8260B)	0
<i>Per Subsection B of 19.15.29.11 NMAC unless the site characterization report includes completed efforts at remediation, the report must include a proposed remediation plan in accordance with 19.15.29.12 NMAC, which includes the anticipated timelines for beginning and completing the remediation.</i>	
On what estimated date will the remediation commence	03/21/2025
On what date will (or did) the final sampling or liner inspection occur	03/26/2025
On what date will (or was) the remediation complete(d)	04/07/2025
What is the estimated surface area (in square feet) that will be reclaimed	1500
What is the estimated volume (in cubic yards) that will be reclaimed	20
What is the estimated surface area (in square feet) that will be remediated	1500
What is the estimated volume (in cubic yards) that will be remediated	20
<i>These estimated dates and measurements are recognized to be the best guess or calculation at the time of submission and may (be) change(d) over time as more remediation efforts are completed.</i>	
<i>The OCD recognizes that proposed remediation measures may have to be minimally adjusted in accordance with the physical realities encountered during remediation. If the responsible party has any need to significantly deviate from the remediation plan proposed, then it should consult with the division to determine if another remediation plan submission is required.</i>	

Sante Fe Main Office  
Phone: (505) 476-3441

General Information  
Phone: (505) 629-6116

Online Phone Directory  
<https://www.emnrd.nm.gov/ocd/contact-us>

**State of New Mexico**  
**Energy, Minerals and Natural Resources**  
**Oil Conservation Division**  
**1220 S. St Francis Dr.**  
**Santa Fe, NM 87505**

QUESTIONS, Page 4

Action 492791

**QUESTIONS (continued)**

Operator: Permian Resources Operating, LLC 300 N. Marienfeld St Ste 1000 Midland, TX 79701	OGRID: 372165
	Action Number: 492791
	Action Type: [C-141] Reclamation Report C-141 (C-141-v-Reclamation)

**QUESTIONS**

<b>Remediation Plan (continued)</b>	
<i>Please answer all the questions that apply or are indicated. This information must be provided to the appropriate district office no later than 90 days after the release discovery date.</i>	
<b>This remediation will (or is expected to) utilize the following processes to remediate / reduce contaminants:</b>	
<i>(Select all answers below that apply.)</i>	
(Ex Situ) Excavation and <b>off-site</b> disposal (i.e. dig and haul, hydrovac, etc.)	Yes
Which OCD approved facility will be used for <b>off-site</b> disposal	LEA LAND LANDFILL [fEEM0112342028]
<b>OR</b> which OCD approved well (API) will be used for <b>off-site</b> disposal	Not answered.
<b>OR</b> is the <b>off-site</b> disposal site, to be used, out-of-state	Not answered.
<b>OR</b> is the <b>off-site</b> disposal site, to be used, an NMED facility	Not answered.
(Ex Situ) Excavation and <b>on-site</b> remediation (i.e. On-Site Land Farms)	Not answered.
(In Situ) Soil Vapor Extraction	Not answered.
(In Situ) Chemical processing (i.e. Soil Shredding, Potassium Permanganate, etc.)	Not answered.
(In Situ) Biological processing (i.e. Microbes / Fertilizer, etc.)	Not answered.
(In Situ) Physical processing (i.e. Soil Washing, Gypsum, Disking, etc.)	Not answered.
Ground Water Abatement pursuant to 19.15.30 NMAC	Not answered.
OTHER (Non-listed remedial process)	Not answered.
<i>Per Subsection B of 19.15.29.11 NMAC unless the site characterization report includes completed efforts at remediation, the report must include a proposed remediation plan in accordance with 19.15.29.12 NMAC, which includes the anticipated timelines for beginning and completing the remediation.</i>	
I hereby certify that the information given above is true and complete to the best of my knowledge and understand that pursuant to OCD rules and regulations all operators are required to report and/or file certain release notifications and perform corrective actions for releases which may endanger public health or the environment. The acceptance of a C-141 report by the OCD does not relieve the operator of liability should their operations have failed to adequately investigate and remediate contamination that pose a threat to groundwater, surface water, human health or the environment. In addition, OCD acceptance of a C-141 report does not relieve the operator of responsibility for compliance with any other federal, state, or local laws and/or regulations.	
I hereby agree and sign off to the above statement	Name: Matthew Taylor Title: Environmental Coordinator Email: <a href="mailto:matthew.taylor@permianres.com">matthew.taylor@permianres.com</a> Date: 08/06/2025
<i>The OCD recognizes that proposed remediation measures may have to be minimally adjusted in accordance with the physical realities encountered during remediation. If the responsible party has any need to significantly deviate from the remediation plan proposed, then it should consult with the division to determine if another remediation plan submission is required.</i>	



Sante Fe Main Office  
Phone: (505) 476-3441

General Information  
Phone: (505) 629-6116

Online Phone Directory  
<https://www.emnrd.nm.gov/ocd/contact-us>

**State of New Mexico**  
**Energy, Minerals and Natural Resources**  
**Oil Conservation Division**  
**1220 S. St Francis Dr.**  
**Santa Fe, NM 87505**

QUESTIONS, Page 5

Action 492791

**QUESTIONS (continued)**

Operator: Permian Resources Operating, LLC 300 N. Marienfeld St Ste 1000 Midland, TX 79701	OGRID: 372165
	Action Number: 492791
	Action Type: [C-141] Reclamation Report C-141 (C-141-v-Reclamation)

**QUESTIONS**

<b>Deferral Requests Only</b>	
<i>Only answer the questions in this group if seeking a deferral upon approval this submission. Each of the following items must be confirmed as part of any request for deferral of remediation.</i>	
Requesting a deferral of the remediation closure due date with the approval of this submission	No

Sante Fe Main Office  
Phone: (505) 476-3441

General Information  
Phone: (505) 629-6116

Online Phone Directory  
<https://www.emnrd.nm.gov/ocd/contact-us>

**State of New Mexico**  
**Energy, Minerals and Natural Resources**  
**Oil Conservation Division**  
**1220 S. St Francis Dr.**  
**Santa Fe, NM 87505**

QUESTIONS, Page 6

Action 492791

**QUESTIONS (continued)**

Operator: Permian Resources Operating, LLC 300 N. Marienfeld St Ste 1000 Midland, TX 79701	OGRID: 372165
	Action Number: 492791
	Action Type: [C-141] Reclamation Report C-141 (C-141-v-Reclamation)

**QUESTIONS**

Sampling Event Information	
Last sampling notification (C-141N) recorded	444833
Sampling date pursuant to Subparagraph (a) of Paragraph (1) of Subsection D of 19.15.29.12 NMAC	03/26/2025
What was the (estimated) number of samples that were to be gathered	12
What was the sampling surface area in square feet	1500

**Remediation Closure Request**

*Only answer the questions in this group if seeking remediation closure for this release because all remediation steps have been completed.*

Requesting a remediation closure approval with this submission	Yes
Have the lateral and vertical extents of contamination been fully delineated	Yes
Was this release entirely contained within a lined containment area	No
All areas reasonably needed for production or subsequent drilling operations have been stabilized, returned to the sites existing grade, and have a soil cover that prevents ponding of water, minimizing dust and erosion	Yes
What was the total surface area (in square feet) remediated	1500
What was the total volume (cubic yards) remediated	20
All areas not reasonably needed for production or subsequent drilling operations have been reclaimed to contain a minimum of four feet of non-waste contain earthen material with concentrations less than 600 mg/kg chlorides, 100 mg/kg TPH, 50 mg/kg BTEX, and 10 mg/kg Benzene	Yes
What was the total surface area (in square feet) reclaimed	1500
What was the total volume (in cubic yards) reclaimed	20
Summarize any additional remediation activities not included by answers (above)	Remediation activities have been completed at site.

*The responsible party must attach information demonstrating they have complied with all applicable closure requirements and any conditions or directives of the OCD. This demonstration should be in the form of a comprehensive report (in .pdf format) including a scaled site map, sampling diagrams, relevant field notes, photographs of any excavation prior to backfilling, laboratory data including chain of custody documents of final sampling, and a narrative of the remedial activities. Refer to 19.15.29.12 NMAC.*

I hereby certify that the information given above is true and complete to the best of my knowledge and understand that pursuant to OCD rules and regulations all operators are required to report and/or file certain release notifications and perform corrective actions for releases which may endanger public health or the environment. The acceptance of a C-141 report by the OCD does not relieve the operator of liability should their operations have failed to adequately investigate and remediate contamination that pose a threat to groundwater, surface water, human health or the environment. In addition, OCD acceptance of a C-141 report does not relieve the operator of responsibility for compliance with any other federal, state, or local laws and/or regulations. The responsible party acknowledges they must substantially restore, reclaim, and re-vegetate the impacted surface area to the conditions that existed prior to the release or their final land use in accordance with 19.15.29.13 NMAC including notification to the OCD when reclamation and re-vegetation are complete.

I hereby agree and sign off to the above statement	Name: Matthew Taylor Title: Environmental Coordinator Email: matthew.taylor@permianres.com Date: 08/06/2025
--	--

Sante Fe Main Office  
Phone: (505) 476-3441

General Information  
Phone: (505) 629-6116

Online Phone Directory  
<https://www.emnrd.nm.gov/ocd/contact-us>

**State of New Mexico**  
**Energy, Minerals and Natural Resources**  
**Oil Conservation Division**  
**1220 S. St Francis Dr.**  
**Santa Fe, NM 87505**

QUESTIONS, Page 7

Action 492791

**QUESTIONS (continued)**

Operator: Permian Resources Operating, LLC 300 N. Marienfeld St Ste 1000 Midland, TX 79701	OGRID: 372165
	Action Number: 492791
	Action Type: [C-141] Reclamation Report C-141 (C-141-v-Reclamation)

**QUESTIONS**

<b>Reclamation Report</b>	
<i>Only answer the questions in this group if all reclamation steps have been completed.</i>	
Requesting a reclamation approval with this submission	Yes
What was the total reclamation surface area (in square feet) for this site	1500
What was the total volume of replacement material (in cubic yards) for this site	20
<i>Per Paragraph (1) of Subsection D of 19.15.29.13 NMAC the reclamation must contain a minimum of four feet of non-waste containing, uncontaminated, earthen material with chloride concentrations less than 600 mg/kg as analyzed by EPA Method 300.0, or other test methods approved by the division. The soil cover must include a top layer, which is either the background thickness of topsoil or one foot of suitable material to establish vegetation at the site, whichever is greater.</i>	
Is the soil top layer complete and is it suitable material to establish vegetation	Yes
On what (estimated) date will (or was) the reseeded commence(d)	04/09/2025
Summarize any additional reclamation activities not included by answers (above)	Reclamation activities have been completed at the site.
<i>The responsible party must attach information demonstrating they have complied with all applicable reclamation requirements and any conditions or directives of the OCD. This demonstration should be in the form of attachments (in .pdf format) including a scaled site map, any proposed reseeded plans or relevant field notes, photographs of reclaimed area, and a narrative of the reclamation activities. Refer to 19.15.29.13 NMAC.</i>	
I hereby certify that the information given above is true and complete to the best of my knowledge and understand that pursuant to OCD rules and regulations all operators are required to report and/or file certain release notifications and perform corrective actions for releases which may endanger public health or the environment. The acceptance of a C-141 report by the OCD does not relieve the operator of liability should their operations have failed to adequately investigate and remediate contamination that pose a threat to groundwater, surface water, human health or the environment. In addition, OCD acceptance of a C-141 report does not relieve the operator of responsibility for compliance with any other federal, state, or local laws and/or regulations. The responsible party acknowledges they must substantially restore, reclaim, and re-vegetate the impacted surface area to the conditions that existed prior to the release or their final land use in accordance with 19.15.29.13 NMAC including notification to the OCD when reclamation and re-vegetation are complete.	
I hereby agree and sign off to the above statement	Name: Matthew Taylor Title: Environmental Coordinator Email: <a href="mailto:matthew.taylor@permianres.com">matthew.taylor@permianres.com</a> Date: 08/06/2025



Sante Fe Main Office  
Phone: (505) 476-3441

General Information  
Phone: (505) 629-6116

Online Phone Directory  
<https://www.emnrd.nm.gov/ocd/contact-us>

State of New Mexico  
Energy, Minerals and Natural Resources  
Oil Conservation Division  
1220 S. St Francis Dr.  
Santa Fe, NM 87505

QUESTIONS, Page 8

Action 492791

QUESTIONS (continued)

Operator: Permian Resources Operating, LLC 300 N. Marienfeld St Ste 1000 Midland, TX 79701	OGRID: 372165
	Action Number: 492791
	Action Type: [C-141] Reclamation Report C-141 (C-141-v-Reclamation)

QUESTIONS

<b>Revegetation Report</b>	
<i>Only answer the questions in this group if all surface restoration, reclamation and re-vegetation obligations have been satisfied.</i>	
Requesting a restoration complete approval with this submission	No
<i>Per Paragraph (4) of Subsection (D) of 19.15.29.13 NMAC for any major or minor release containing liquids, the responsible party must notify the division when reclamation and re-vegetation are complete.</i>	

Sante Fe Main Office  
Phone: (505) 476-3441

General Information  
Phone: (505) 629-6116

Online Phone Directory  
<https://www.emnrd.nm.gov/ocd/contact-us>

State of New Mexico  
Energy, Minerals and Natural Resources  
Oil Conservation Division  
1220 S. St Francis Dr.  
Santa Fe, NM 87505

CONDITIONS

Action 492791

CONDITIONS

Operator: Permian Resources Operating, LLC 300 N. Marienfeld St Ste 1000 Midland, TX 79701	OGRID: 372165
	Action Number: 492791
	Action Type: [C-141] Reclamation Report C-141 (C-141-v-Reclamation)

CONDITIONS

Created By	Condition	Condition Date
scwells	None	8/7/2025