



SITE INFORMATION

Closure Report
Cutbow West CTB 1 (06.06.2025)
Incident ID: NAPP2516177828
Lea County, New Mexico
Unit N, Sec 25, T19S, R32E
32.626464, -103.721778

Crude Oil Release
Point of Release: Flare Fire
Release Date: 06.06.2025
Volume Released: 0.4 Barrels of Crude Oil
Volume Recovered: 0.0 Barrels of Crude Oil

CARMONA RESOURCES



Prepared for:
Coterra Energy Operating Co.
6001 Deauville Blvd.
Suite 300N
Midland, Texas 79706

Prepared by:
Carmona Resources, LLC
310 West Wall Street
Suite 500
Midland, Texas 79701

310 West Wall Street, Suite 500
Midland TX, 79701
432.813.1992



TABLE OF CONTENTS

1.0 SITE INFORMATION AND BACKGROUND

2.0 SITE CHARACTERIZATION AND GROUNDWATER

3.0 NMAC REGULATORY CRITERIA

4.0 REMEDIATION ACTIVITIES

5.0 CONCLUSIONS

FIGURES

FIGURE 1 OVERVIEW FIGURE 2 TOPOGRAPHIC

FIGURE 3 EXCAVATION DEPTH

APPENDICES

APPENDIX A TABLES

APPENDIX B PHOTOS

APPENDIX C NMOCD CORRESPONDENCE

APPENDIX D SITE CHARACTERIZATION AND GROUNDWATER

APPENDIX E LABORATORY REPORTS



July 22, 2025

New Mexico Oil Conservation District
1220 South St, France Drive
Santa Fe, NM 87505

Re: **Closure Report**
Cutbow West CTB 1 (06.06.2025)
Incident ID: NAPP2516177828
Coterra Energy Operating Co.
Site Location: Unit N, S25, T19S, R32E
32.626464, -103.721778
Lea County, New Mexico

To whom it may concern:

At the request of Coterra Energy Operating Co. (Coterra, formerly known as Avant Operating, LLC) Carmona Resources LLC, has prepared this letter to document the site remediation conducted at the Cutbow West CTB 1, located at 32.626464, -104.721778 within Unit N, S25, T19S, R32E, in Lea County, New Mexico (Figures 1 and 2).

1.0 Site Information and Background

Based on the initial C-141 obtained from the New Mexico Oil Conservation Division (NMOCD), the release was discovered on June 6, 2025, due to a loss of air supply at the facility, allowing fluids from the separator to carry over to the flare, resulting in a fire. The incident resulted in the release of approximately zero point four (0.4) barrels of crude oil, with zero (0) barrels recovered. The release area is approximately 1,369 square feet. The spill boundaries are shown in Figure 3. The initial C-141 form is attached in Appendix C.

2.0 Site Characterization and Groundwater

The site is located within a low karst area. Based on a review of the New Mexico Office of State Engineers and USGS databases, there are no known water sources within a 0.50-mile radius of the location. The nearest Groundwater Determination Bore (GWDB) is located approximately 0.48 miles East of the site in S25, T19S, 32E (32.625917°, -103.713639°) and was drilled in 2024. The GWDB was drilled to 55 feet below ground surface (ft bgs) and did not have evidence of groundwater. A copy of the associated well log is attached in Appendix D.

3.0 NMAC Regulatory Criteria

Per the NMOCD regulatory criteria established in 19.15.29.12 NMAC, the following criteria were utilized in assessing and remediating the site.

- Benzene: 10 milligrams per kilogram (mg/kg).
- Benzene, toluene, ethylbenzene, and total xylenes (BTEX): 50 mg/kg.
- TPH: 1,000 mg/kg (GRO + DRO).
- TPH: 2,500 mg/kg (GRO + DRO + MRO).
- Chloride: 10,000 mg/kg.



4.0 Remediation Activities

On July 8, 2025, Carmona Resources personnel were onsite to supervise the remediation activities, collect confirmation samples, and document backfill activities. Before collecting composite confirmation samples, the NMOCD division office was notified via NMOCD portal on July 6, 2025, per Subsection D of 19.15.29.12 NMAC, see Appendix C. The area was excavated to a depth of 0.5 ft bgs. A total of four (4) horizontal samples (H-1 through H-4) were collected for horizontal delineation, and nine (9) confirmation floor samples (CS-1 through CS-9) were collected every 200 square feet to ensure the proper removal of contaminated soil. Composite confirmation sidewall samples were not collected due to the excavation depth not exceeding 0.5' ft bgs. For chemical analysis, the soil samples were collected and placed into laboratory-provided sample containers, stored on ice, and transported under the proper chain-of-custody protocol to Cardinal Laboratories in Hobbs, New Mexico in accordance with established chain-of-custody protocols. All collected samples were analyzed for TPH analysis by EPA method 8015 modified, BTEX by EPA method 8021B, and Chloride by EPA method 4500. Copies of laboratory analysis and chain-of-custody documentation are included in Appendix E.

All final confirmation samples were below the regulatory requirements for TPH, BTEX, and Chlorides. Refer to Table 1. The excavation depths and confirmation sample locations are shown in Figure 3.

Once the remediation activities were completed, the excavated areas were backfilled with clean material to surface grade. A composite sample of the backfill material was collected for laboratory analysis on July 14, 2025 before being utilized. The backfill material was sourced from the local landowner at GPS 32.628917 -103.612389. Refer to Table 2. Approximately 1,369 square feet of contamination was remediated, resulting in 30 cubic yards of material being excavated and transported offsite for proper disposal.

5.0 Conclusions

Based on the assessment results and the analytical data from the remediation, no further actions are required at the site. Coterra formally requests the closure of the spill. Coterra is requesting that this incident be closed for all aspects of 19.15.29.12 & 13. The entire area will be reclaimed and revegetated during normal P/A activities per NMAC 19.15.29.13. If you have any questions regarding this report or need additional information, please contact us at 432-813-8988.

Sincerely,
Carmona Resources, LLC

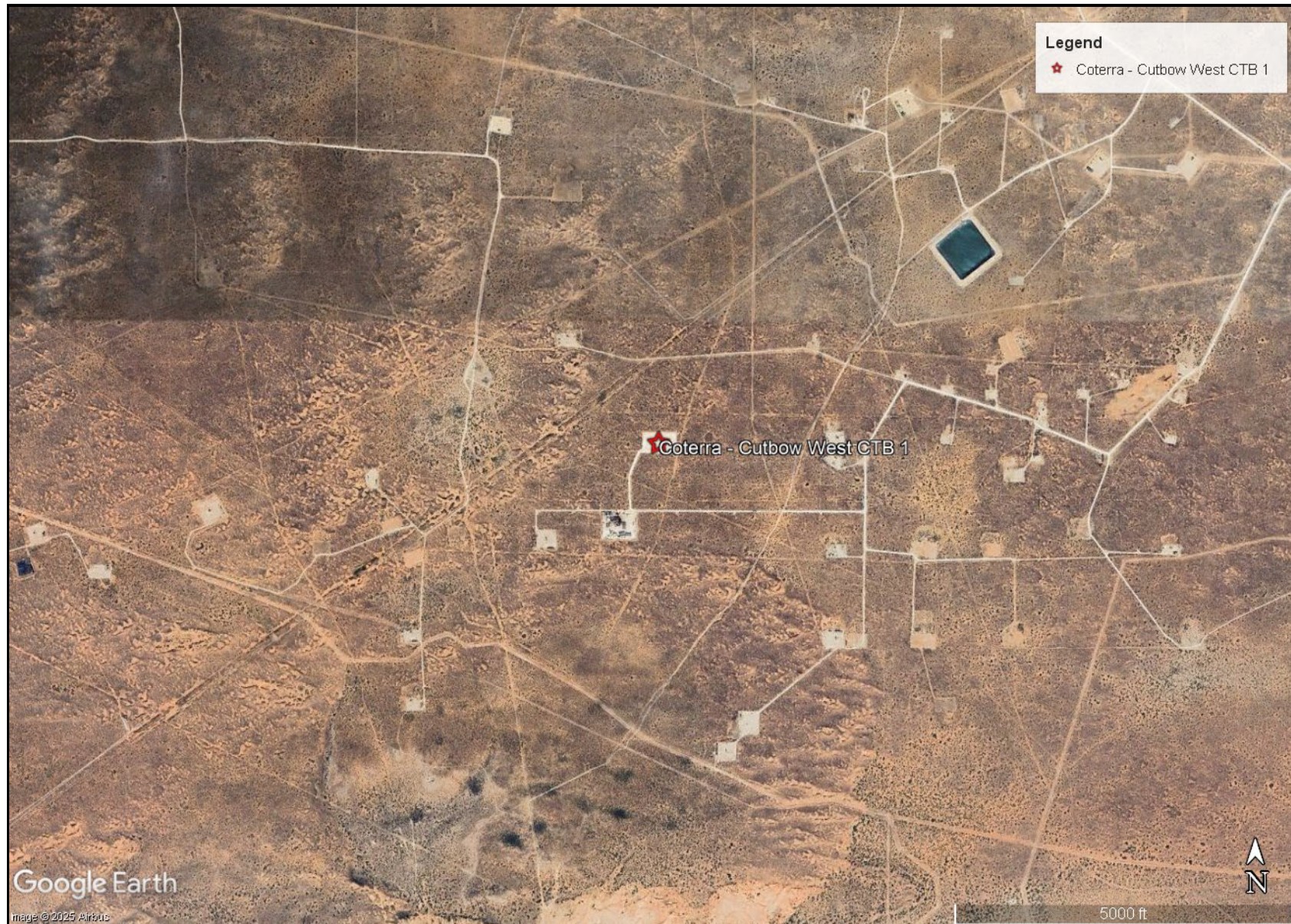
Ashton Thielke
Environmental Manager


Gilbert Priego
Project Manager

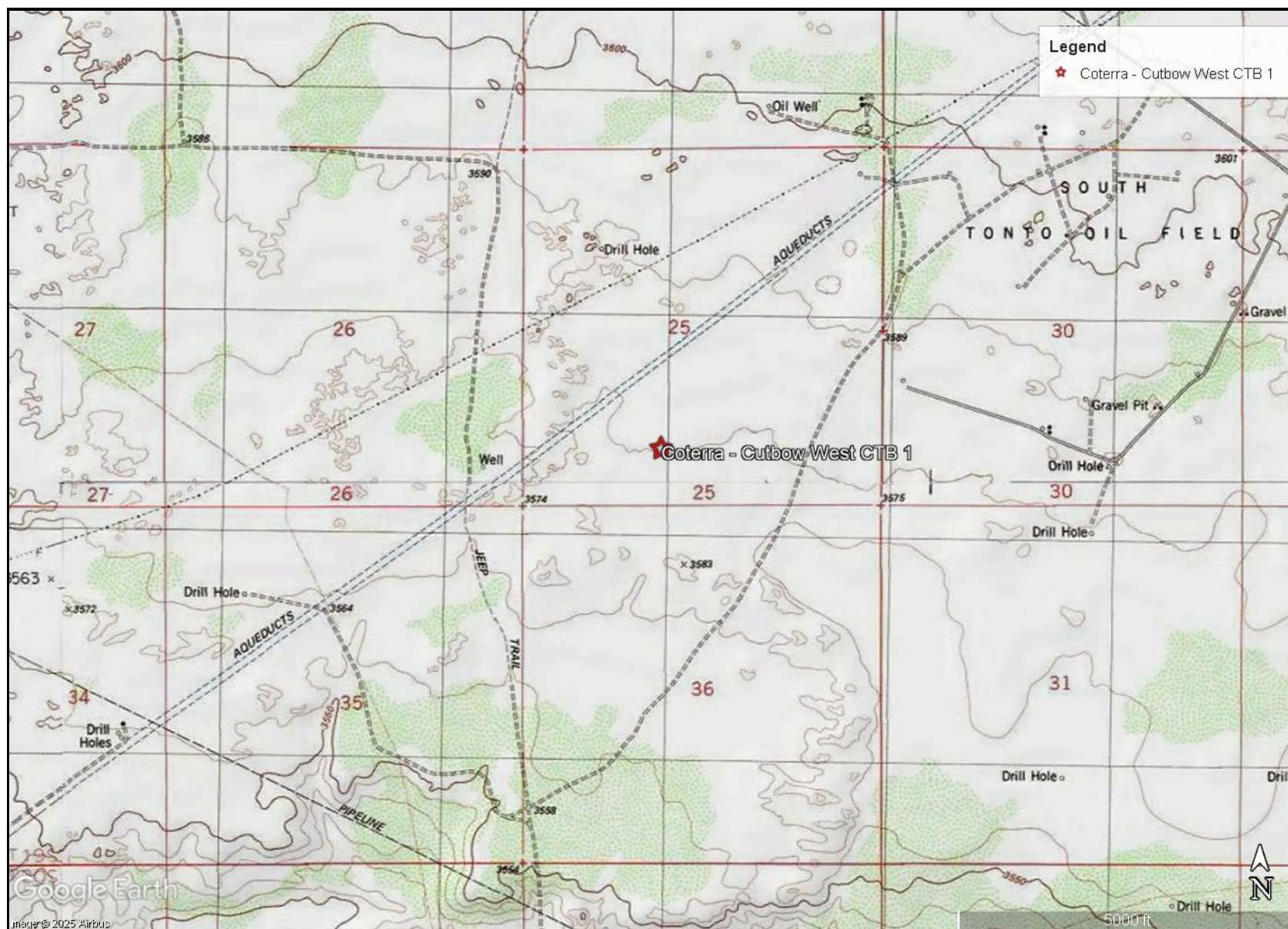
FIGURES

CARMONA RESOURCES





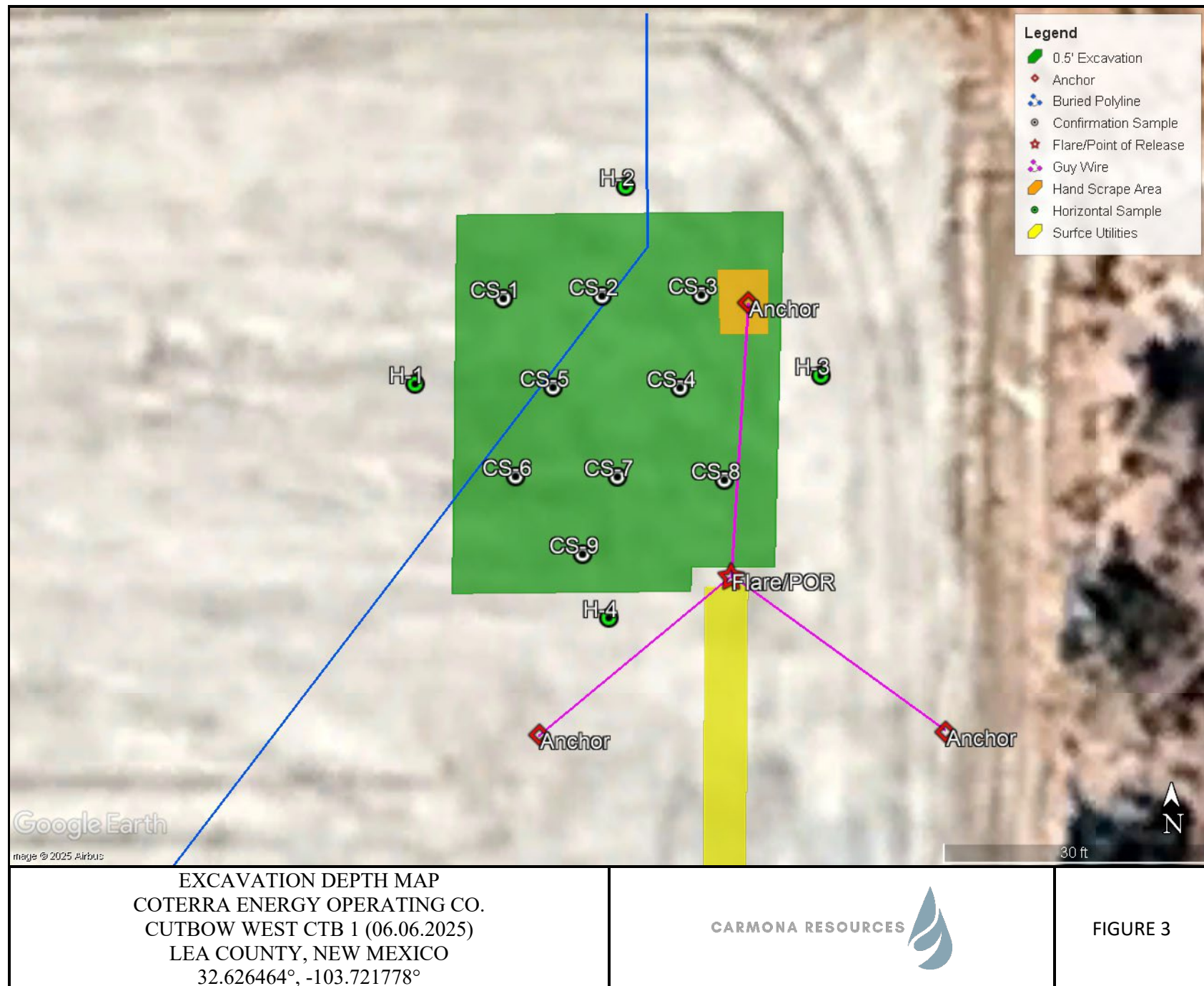
<p>OVERVIEW MAP COTERRA ENERGY OPERATING CO. CUTBOW WEST CTB 1 (06.06.2025) LEA COUNTY, NEW MEXICO 32.626464°, -103.721778°</p>	<p>CARMONA RESOURCES </p>	<p>FIGURE 1</p>
---	--	-----------------



TOPOGRAPHIC MAP
COTERRA ENERGY OPERATING CO.
CUTBOW WEST CTB 1 (06.06.2025)
LEA COUNTY, NEW MEXICO
32.626464°, -103.721778°



FIGURE 2



APPENDIX A

CARMONA RESOURCES



Table 1
Coterra Energy Operating Co.
Cutbow West CTB 1 (6.6.2025)
Lea County, New Mexico

Sample ID	Date	Depth (ft)	TPH (mg/kg)				Benzene (mg/kg)	Toluene (mg/kg)	Ethlybenzene (mg/kg)	Xylene (mg/kg)	Total BTEX (mg/kg)	Chloride (mg/kg)
			GRO	DRO	MRO	Total						
CS-1	7/8/2025	0.5'	<10.0	<10.0	<10.0	<10.0	<0.050	<0.050	<0.050	<0.150	<0.300	128
CS-2	7/8/2025	0.5'	<10.0	<10.0	<10.0	<10.0	<0.050	<0.050	<0.050	<0.150	<0.300	32.0
CS-3	7/8/2025	0.5'	<10.0	<10.0	<10.0	<10.0	<0.050	<0.050	<0.050	<0.150	<0.300	16.0
CS-4	7/8/2025	0.5'	<10.0	<10.0	<10.0	<10.0	<0.050	<0.050	<0.050	<0.150	<0.300	<16.0
CS-5	7/8/2025	0.5'	<10.0	<10.0	<10.0	<10.0	<0.050	<0.050	<0.050	<0.150	<0.300	48.0
CS-6	7/8/2025	0.5'	<10.0	<10.0	<10.0	<10.0	<0.050	<0.050	<0.050	<0.150	<0.300	48.0
CS-7	7/8/2025	0.5'	<10.0	<10.0	<10.0	<10.0	<0.050	<0.050	<0.050	<0.150	<0.300	64.0
CS-8	7/8/2025	0.5'	<10.0	<10.0	<10.0	<10.0	<0.050	<0.050	<0.050	<0.150	<0.300	48.0
CS-9	7/8/2005	0.5'	<10.0	<10.0	<10.0	<10.0	<0.050	<0.050	<0.050	<0.150	<0.300	48.0
Regulatory Criteria^A			1,000 mg/kg			2,500 mg/kg	10 mg/kg				50 mg/kg	10,000 mg/kg

^A – Table 1 - 19.15.29 NMAC

mg/kg - milligram per kilogram

TPH - Total Petroleum Hydrocarbons

ft - feet

(CS) - Confirmation Sample

Table 1
Coterra Energy Operating Co.
Cutbow West CTB 1 (6.6.2025)
Lea County, New Mexico

Sample ID	Date	Depth (ft)	TPH (mg/kg)				Benzene (mg/kg)	Toluene (mg/kg)	Ethlybenzene (mg/kg)	Xylene (mg/kg)	Total BTEX (mg/kg)	Chloride (mg/kg)
			GRO	DRO	MRO	Total						
H-1	7/8/2025	0-0.5'	<10.0	13.9	<10.0	13.9	<0.050	<0.050	<0.050	<0.150	<0.300	288
H-2	7/8/2025	0-0.5'	<10.0	<10.0	<10.0	<10.0	<0.050	<0.050	<0.050	<0.150	<0.300	160
H-3	7/8/2025	0-0.5'	<10.0	<10.0	<10.0	<10.0	<0.050	<0.050	<0.050	<0.150	<0.300	160
H-4	7/8/2025	0-0.5'	<10.0	26.8	14.9	41.7	<0.050	<0.050	<0.050	<0.150	<0.300	256
Backfill	7/14/2025	-	<10.0	30.1	<10.0	30.1	<0.050	<0.050	<0.050	<0.150	<0.300	32.0
Regulatory Criteria^A							100 mg/kg	10 mg/kg			50 mg/kg	600 mg/kg

^A – Table 1 - 19.15.29 NMAC

mg/kg - milligram per kilogram

TPH - Total Petroleum Hydrocarbons

ft - feet

(H) - Horizontal Sample

APPENDIX B

CARMONA RESOURCES



PHOTOGRAPHIC LOG

Coterra Energy Operating Co.

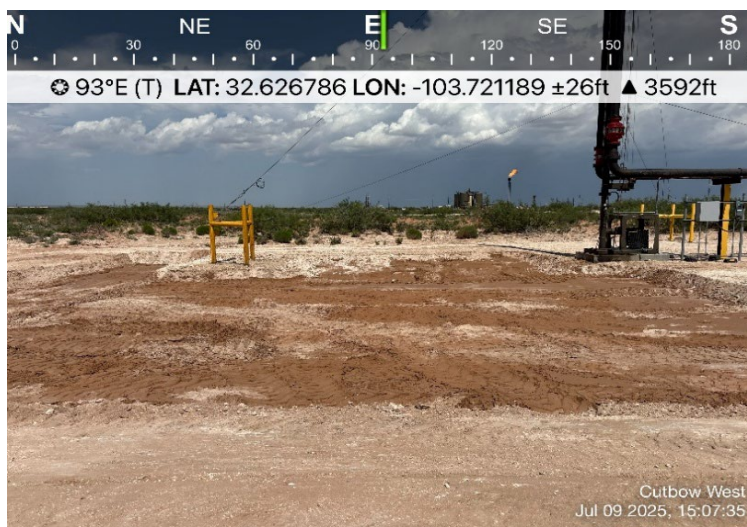
Photograph No. 1

Facility: Cutbow West CTB 1 (6.6.2025)

County: Lea County, New Mexico

Description:

View East, area of CS-1 through CS-9.



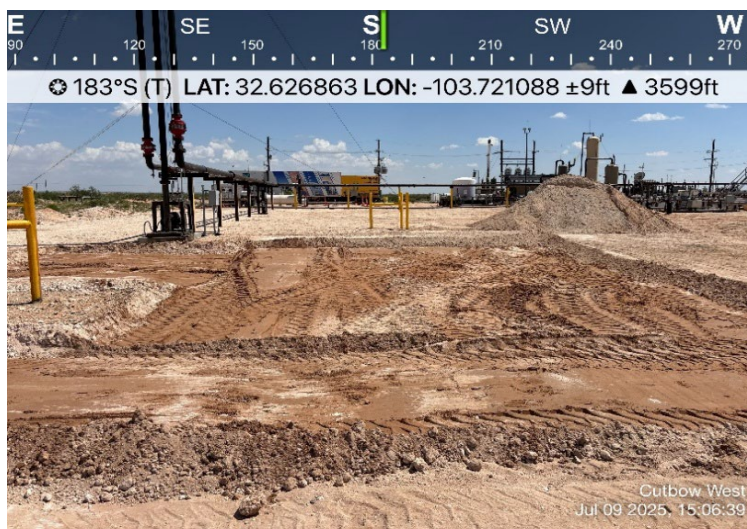
Photograph No. 2

Facility: Cutbow West CTB 1 (6.6.2025)

County: Lea County, New Mexico

Description:

View South, Area of CS-1 through CS-9



Photograph No. 3

Facility: Cutbow West CTB 1 (6.6.2025)

County: Lea County, New Mexico

Description:

View NorthWest, Area of CS-1 through CS-9



APPENDIX C

CARMONA RESOURCES



Sante Fe Main Office
Phone: (505) 476-3441

General Information
Phone: (505) 629-6116

Online Phone Directory
<https://www.emnrd.nm.gov/ocd/contact-us>

State of New Mexico
Energy, Minerals and Natural Resources
Oil Conservation Division
1220 S. St Francis Dr.
Santa Fe, NM 87505

QUESTIONS

Action 472961

QUESTIONS

Operator: Avant Operating, LLC 6001 Deauville Blvd Midland, TX 79706	OGRID: 330396
	Action Number: 472961
	Action Type: [NOTIFY] Notification Of Release (NOR)

QUESTIONS

Location of Release Source <i>Please answer all the questions in this group.</i>	
Site Name	Cutbow West CTB 1
Date Release Discovered	06/06/2025
Surface Owner	Federal

Incident Details <i>Please answer all the questions in this group.</i>	
Incident Type	Oil Release
Did this release result in a fire or is the result of a fire	Yes
Did this release result in any injuries	No
Has this release reached or does it have a reasonable probability of reaching a watercourse	No
Has this release endangered or does it have a reasonable probability of endangering public health	No
Has this release substantially damaged or will it substantially damage property or the environment	No
Is this release of a volume that is or may with reasonable probability be detrimental to fresh water	No

Nature and Volume of Release <i>Material(s) released, please answer all that apply below. Any calculations or specific justifications for the volumes provided should be attached to the follow-up C-141 submission.</i>	
Crude Oil Released (bbls) Details	Cause: Equipment Failure Other (Specify) Crude Oil Released: 0 BBL Recovered: 0 BBL Lost: 0 BBL
Produced Water Released (bbls) Details	Not answered.
Is the concentration of chloride in the produced water >10,000 mg/l	Not answered.
Condensate Released (bbls) Details	Not answered.
Natural Gas Vented (Mcf) Details	Not answered.
Natural Gas Flared (Mcf) Details	Not answered.
Other Released Details	Not answered.
Are there additional details for the questions above (i.e. any answer containing Other, Specify, Unknown, and/or Fire, or any negative lost amounts)	We had a reportable release at the Cutbow West CTB on June 6, 2025 due to loss of air supply at the facility, allowing fluid from the separator to carry over to the flare. This incident resulted in a small fire and total release of 0.4 barrels of oil onto the well pad. No injuries or damage resulted from the fire. In the coming weeks, we will evaluate the affected soils and implement the necessary remediation measures.

Sante Fe Main Office
Phone: (505) 476-3441

General Information
Phone: (505) 629-6116

Online Phone Directory
<https://www.emnrd.nm.gov/ocd/contact-us>

State of New Mexico
Energy, Minerals and Natural Resources
Oil Conservation Division
1220 S. St Francis Dr.
Santa Fe, NM 87505

QUESTIONS, Page 2

Action 472961

QUESTIONS (continued)

Operator: Avant Operating, LLC 6001 Deauville Blvd Midland, TX 79706	OGRID: 330396
	Action Number: 472961
	Action Type: [NOTIFY] Notification Of Release (NOR)

QUESTIONS

Nature and Volume of Release (continued)	
Is this a gas only submission (i.e. only significant Mcf values reported)	More volume information must be supplied to determine if this will be treated as a "gas only" report.
Was this a major release as defined by Subsection A of 19.15.29.7 NMAC	Yes
Reasons why this would be considered a submission for a notification of a major release	From paragraph A. "Major release" determine using: (2) an unauthorized release of a volume that: (a) results in a fire or is the result of a fire.
With the implementation of the 19.15.27 NMAC (05/25/2021), venting and/or flaring of natural gas (i.e. gas only) are to be submitted on the C-129 form.	

Initial Response

The responsible party must undertake the following actions immediately unless they could create a safety hazard that would result in injury.

The source of the release has been stopped	True
The impacted area has been secured to protect human health and the environment	True
Released materials have been contained via the use of berms or dikes, absorbent pads, or other containment devices	True
All free liquids and recoverable materials have been removed and managed appropriately	True
If all the actions described above have not been undertaken, explain why	Not answered.

Per Paragraph 4 of Subsection B of 19.15.29.8 NMAC the responsible party may commence remediation immediately after discovery of a release. If remediation has begun, please prepare and attach a narrative of actions to date in the follow-up C-141 submission. If remedial efforts have been successfully completed or if the release occurred within a lined containment area (see 19.15.29.11(A)(5)(a) NMAC), please prepare and attach all information needed for closure evaluation in the follow-up C-141 submission.

Sante Fe Main Office
Phone: (505) 476-3441

General Information
Phone: (505) 629-6116

Online Phone Directory
<https://www.emnrd.nm.gov/ocd/contact-us>

State of New Mexico
Energy, Minerals and Natural Resources
Oil Conservation Division
1220 S. St Francis Dr.
Santa Fe, NM 87505

ACKNOWLEDGMENTS

Action 472961

ACKNOWLEDGMENTS

Operator: Avant Operating, LLC 6001 Deauville Blvd Midland, TX 79706	OGRID: 330396
	Action Number: 472961
	Action Type: [NOTIFY] Notification Of Release (NOR)

ACKNOWLEDGMENTS

<input checked="" type="checkbox"/>	I acknowledge that I am authorized to submit notification of a release on behalf of my operator.
<input checked="" type="checkbox"/>	I acknowledge that upon submitting this application, I will be creating a new incident file (assigned to my operator) to track the notification(s) and corrective action(s) for a release, pursuant to NMAC 19.15.29.
<input checked="" type="checkbox"/>	I acknowledge that creating a new incident file will require my operator to file subsequent submission(s) of form "C-141, Application for administrative approval of a release notification and corrective action", pursuant to NMAC 19.15.29.
<input checked="" type="checkbox"/>	I hereby certify that the information given above is true and complete to the best of my knowledge and understand that pursuant to OCD rules and regulations all operators are required to report and/or file certain release notifications and perform corrective actions for releases which may endanger public health or the environment.
<input checked="" type="checkbox"/>	I acknowledge the fact that the acceptance of a C-141 report by the OCD does not relieve the operator of liability should their operations have failed to adequately investigate and remediate contamination that pose a threat to groundwater, surface water, human health or the environment.
<input checked="" type="checkbox"/>	I acknowledge the fact that, in addition, OCD acceptance of a C-141 report does not relieve the operator of responsibility for compliance with any other federal, state, or local laws and/or regulations.

Sante Fe Main Office
Phone: (505) 476-3441

General Information
Phone: (505) 629-6116

Online Phone Directory
<https://www.emnrd.nm.gov/ocd/contact-us>

State of New Mexico
Energy, Minerals and Natural Resources
Oil Conservation Division
1220 S. St Francis Dr.
Santa Fe, NM 87505

CONDITIONS

Action 472961

CONDITIONS

Operator: Avant Operating, LLC 6001 Deauville Blvd Midland, TX 79706	OGRID: 330396
	Action Number: 472961
	Action Type: [NOTIFY] Notification Of Release (NOR)

CONDITIONS

Created By	Condition	Condition Date
lluig	When submitting future reports regarding this release, please submit the calculations used or specific justification for the volumes reported on the initial C-141.	6/10/2025

AVANT OPERATING
CUTBOW WEST CTB
LEA, NM

9:58



< Home

Saturated Soil Calculation

Cutbow West CTB

L(Ft)

W(Ft)

D(In)

Oil %

1956

1

.1

100



Soil Definitions



SOIL TYPE FACTOR

0.08

0.14

0.16

0.25

0.15

H₂O Spill Total: 0.00 Bbls

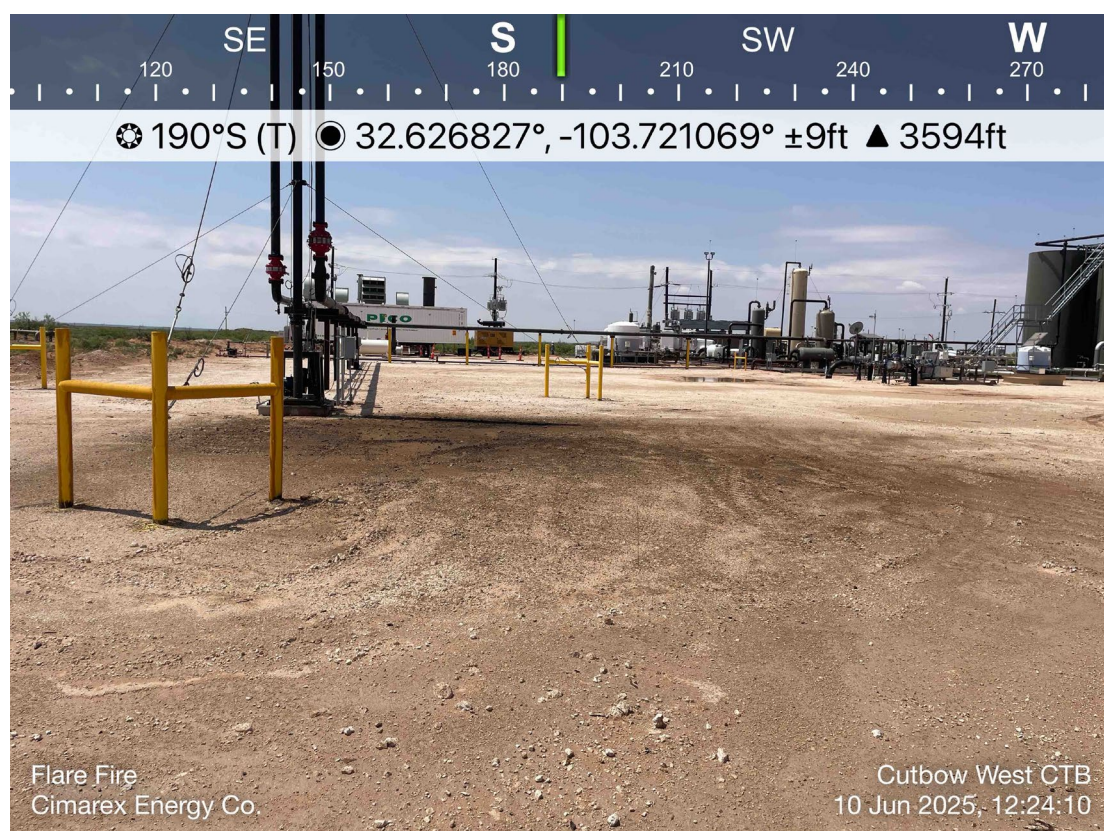
Oil Spill Total: 0.41 Bbls

Total Spilled: 0.41 Bbls

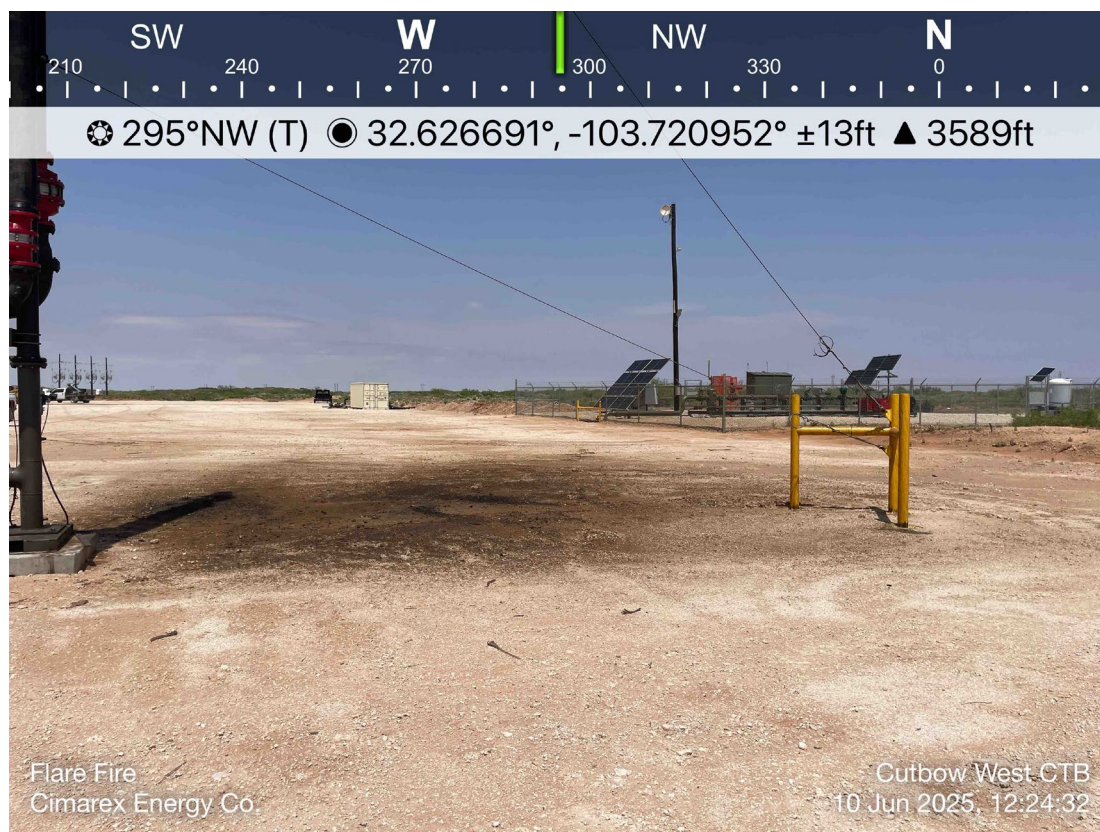
Total Spilled: 17.07 Gals

Add Section to Spill

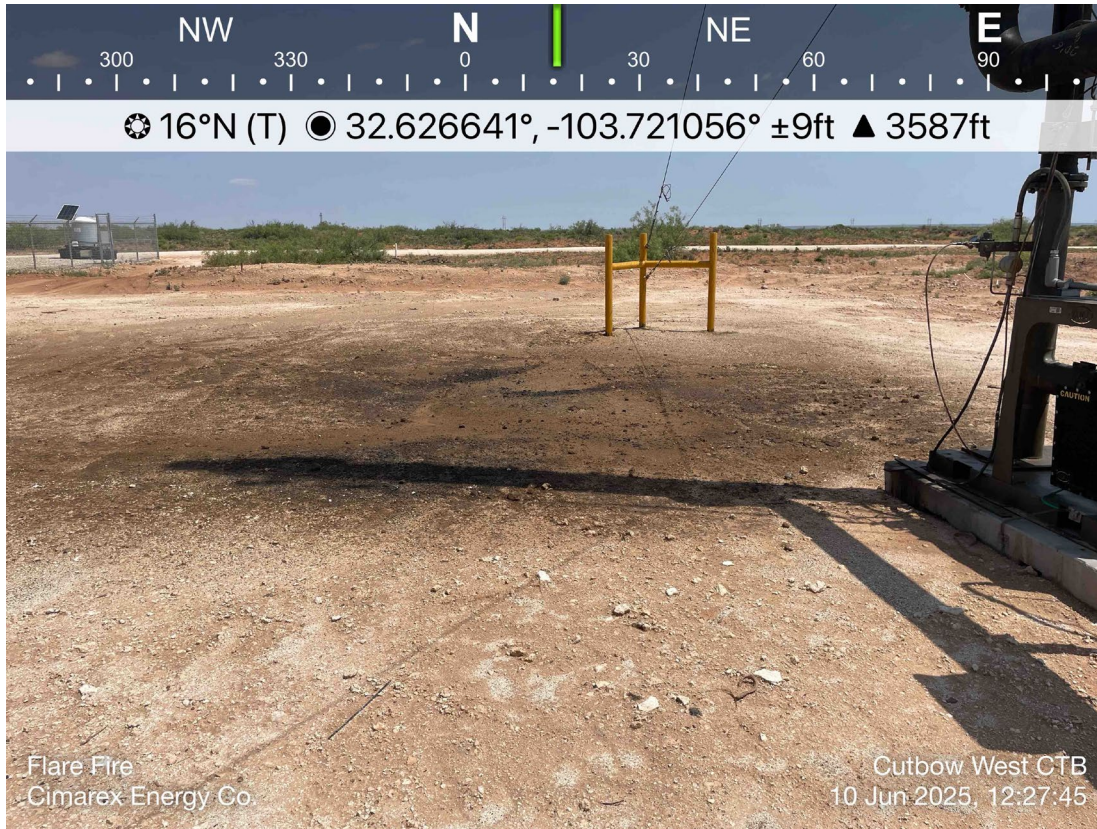
AVANT OPERATING
CUTBOW WEST CTB
LEA, NM



AVANT OPERATING
CUTBOW WEST CTB
LEA, NM



AVANT OPERATING
CUTBOW WEST CTB
LEA, NM



Sante Fe Main Office
Phone: (505) 476-3441

General Information
Phone: (505) 629-6116

Online Phone Directory
<https://www.emnrd.nm.gov/ocd/contact-us>

State of New Mexico
Energy, Minerals and Natural Resources
Oil Conservation Division
1220 S. St Francis Dr.
Santa Fe, NM 87505

QUESTIONS

Action 477752

QUESTIONS

Operator: Avant Operating, LLC 6001 Deauville Blvd Midland, TX 79706	OGRID: 330396
	Action Number: 477752
	Action Type: [C-141] Initial C-141 (C-141-v-Initial)

QUESTIONS

Prerequisites	
Incident ID (n#)	nAPP2516177828
Incident Name	NAPP2516177828 CUTBOW WEST CTB 1 @ 0
Incident Type	Oil Release
Incident Status	Initial C-141 Received
Incident Facility	[fAPP2318749411] Cutbow West CTB 1

Location of Release Source	
Please answer all the questions in this group.	
Site Name	Cutbow West CTB 1
Date Release Discovered	06/06/2025
Surface Owner	Federal

Incident Details	
Please answer all the questions in this group.	
Incident Type	Oil Release
Did this release result in a fire or is the result of a fire	Yes
Did this release result in any injuries	No
Has this release reached or does it have a reasonable probability of reaching a watercourse	No
Has this release endangered or does it have a reasonable probability of endangering public health	No
Has this release substantially damaged or will it substantially damage property or the environment	No
Is this release of a volume that is or may with reasonable probability be detrimental to fresh water	No

Nature and Volume of Release	
Material(s) released, please answer all that apply below. Any calculations or specific justifications for the volumes provided should be attached to the follow-up C-141 submission.	
Crude Oil Released (bbls) Details	Cause: Equipment Failure Other (Specify) Crude Oil Released: 0 BBL Recovered: 0 BBL Lost: 0 BBL.
Produced Water Released (bbls) Details	Not answered.
Is the concentration of chloride in the produced water >10,000 mg/l	No
Condensate Released (bbls) Details	Not answered.
Natural Gas Vented (Mcf) Details	Not answered.
Natural Gas Flared (Mcf) Details	Not answered.
Other Released Details	Not answered.
Are there additional details for the questions above (i.e. any answer containing Other, Specify, Unknown, and/or Fire, or any negative lost amounts)	We had a reportable release at the Cutbow West CTB on June 6, 2025 due to loss of air supply at the facility, allowing fluid from the separator to carry over to the flare. This incident resulted in a small fire and total release of 0.4 barrels of oil onto the well pad. No injuries or damage resulted from the fire. In the coming weeks, we will evaluate the affected soils and implement the necessary remediation measures.

Sante Fe Main Office
Phone: (505) 476-3441

General Information
Phone: (505) 629-6116

Online Phone Directory
<https://www.emnrd.nm.gov/ocd/contact-us>

State of New Mexico
Energy, Minerals and Natural Resources
Oil Conservation Division
1220 S. St Francis Dr.
Santa Fe, NM 87505

QUESTIONS, Page 2

Action 477752

QUESTIONS (continued)

Operator: Avant Operating, LLC 6001 Deauville Blvd Midland, TX 79706	OGRID: 330396
	Action Number: 477752
	Action Type: [C-141] Initial C-141 (C-141-v-Initial)

QUESTIONS

Nature and Volume of Release (continued)	
Is this a gas only submission (i.e. only significant Mcf values reported)	More info needed to determine if this will be treated as a "gas only" report.
Was this a major release as defined by Subsection A of 19.15.29.7 NMAC	Yes
Reasons why this would be considered a submission for a notification of a major release	From paragraph A. "Major release" determine using: (2) an unauthorized release of a volume that: (a) results in a fire or is the result of a fire.
With the implementation of the 19.15.27 NMAC (05/25/2021), venting and/or flaring of natural gas (i.e. gas only) are to be submitted on the C-129 form.	

Initial Response

The responsible party must undertake the following actions immediately unless they could create a safety hazard that would result in injury.

The source of the release has been stopped	True
The impacted area has been secured to protect human health and the environment	True
Released materials have been contained via the use of berms or dikes, absorbent pads, or other containment devices	True
All free liquids and recoverable materials have been removed and managed appropriately	True
If all the actions described above have not been undertaken, explain why	Not answered.

Per Paragraph (4) of Subsection B of 19.15.29.8 NMAC the responsible party may commence remediation immediately after discovery of a release. If remediation has begun, please prepare and attach a narrative of actions to date in the follow-up C-141 submission. If remedial efforts have been successfully completed or if the release occurred within a lined containment area (see Subparagraph (a) of Paragraph (5) of Subsection A of 19.15.29.11 NMAC), please prepare and attach all information needed for closure evaluation in the follow-up C-141 submission.

I hereby certify that the information given above is true and complete to the best of my knowledge and understand that pursuant to OCD rules and regulations all operators are required to report and/or file certain release notifications and perform corrective actions for releases which may endanger public health or the environment. The acceptance of a C-141 report by the OCD does not relieve the operator of liability should their operations have failed to adequately investigate and remediate contamination that pose a threat to groundwater, surface water, human health or the environment. In addition, OCD acceptance of a C-141 report does not relieve the operator of responsibility for compliance with any other federal, state, or local laws and/or regulations.

I hereby agree and sign off to the above statement	Name: Laci Luig Title: ES&H Specialist Email: DL_PermianEnvironmental@coterra.com Date: 06/23/2025
--	---

Sante Fe Main Office
Phone: (505) 476-3441

General Information
Phone: (505) 629-6116

Online Phone Directory
<https://www.emnrd.nm.gov/ocd/contact-us>

State of New Mexico
Energy, Minerals and Natural Resources
Oil Conservation Division
1220 S. St Francis Dr.
Santa Fe, NM 87505

QUESTIONS, Page 3

Action 477752

QUESTIONS (continued)

Operator: Avant Operating, LLC 6001 Deauville Blvd Midland, TX 79706	OGRID: 330396
	Action Number: 477752
	Action Type: [C-141] Initial C-141 (C-141-v-Initial)

QUESTIONS

Site Characterization	
<i>Please answer all the questions in this group (only required when seeking remediation plan approval and beyond). This information must be provided to the appropriate district office no later than 90 days after the release discovery date.</i>	
What is the shallowest depth to groundwater beneath the area affected by the release in feet below ground surface (ft bgs)	Not answered.
What method was used to determine the depth to ground water	Not answered.
Did this release impact groundwater or surface water	Not answered.
What is the minimum distance, between the closest lateral extents of the release and the following surface areas:	
A continuously flowing watercourse or any other significant watercourse	Not answered.
Any lakebed, sinkhole, or playa lake (measured from the ordinary high-water mark)	Not answered.
An occupied permanent residence, school, hospital, institution, or church	Not answered.
A spring or a private domestic fresh water well used by less than five households for domestic or stock watering purposes	Not answered.
Any other fresh water well or spring	Not answered.
Incorporated municipal boundaries or a defined municipal fresh water well field	Not answered.
A wetland	Not answered.
A subsurface mine	Not answered.
An (non-karst) unstable area	Not answered.
Categorize the risk of this well / site being in a karst geology	Not answered.
A 100-year floodplain	Not answered.
Did the release impact areas not on an exploration, development, production, or storage site	Not answered.

Remediation Plan	
<i>Please answer all the questions that apply or are indicated. This information must be provided to the appropriate district office no later than 90 days after the release discovery date.</i>	
Requesting a remediation plan approval with this submission	No
<i>The OCD recognizes that proposed remediation measures may have to be minimally adjusted in accordance with the physical realities encountered during remediation. If the responsible party has any need to significantly deviate from the remediation plan proposed, then it should consult with the division to determine if another remediation plan submission is required.</i>	

Sante Fe Main Office
Phone: (505) 476-3441

General Information
Phone: (505) 629-6116

Online Phone Directory
<https://www.emnrd.nm.gov/ocd/contact-us>

State of New Mexico
Energy, Minerals and Natural Resources
Oil Conservation Division
1220 S. St Francis Dr.
Santa Fe, NM 87505

CONDITIONS

Action 477752

CONDITIONS

Operator: Avant Operating, LLC 6001 Deauville Blvd Midland, TX 79706	OGRID: 330396
	Action Number: 477752
	Action Type: [C-141] Initial C-141 (C-141-v-Initial)

CONDITIONS

Created By	Condition	Condition Date
scott.rodgers	None	6/23/2025

Sante Fe Main Office
Phone: (505) 476-3441

General Information
Phone: (505) 629-6116

Online Phone Directory
<https://www.emnrd.nm.gov/ocd/contact-us>

State of New Mexico
Energy, Minerals and Natural Resources
Oil Conservation Division
1220 S. St Francis Dr.
Santa Fe, NM 87505

QUESTIONS

Action 481926

QUESTIONS

Operator: Avant Operating, LLC 6001 Deauville Blvd Midland, TX 79706	OGRID: 330396
	Action Number: 481926
	Action Type: [NOTIFY] Notification Of Sampling (C-141N)

QUESTIONS

Prerequisites	
Incident ID (n#)	nAPP2516177828
Incident Name	NAPP2516177828 CUTBOW WEST CTB 1 @ 0
Incident Type	Oil Release
Incident Status	Initial C-141 Approved
Incident Facility	[fAPP2318749411] Cutbow West CTB 1

Location of Release Source	
Site Name	Cutbow West CTB 1
Date Release Discovered	06/06/2025
Surface Owner	Federal

Sampling Event General Information	
<i>Please answer all the questions in this group.</i>	
What is the sampling surface area in square feet	1,956
What is the estimated number of samples that will be gathered	14
Sampling date pursuant to Subparagraph (a) of Paragraph (1) of Subsection D of 19.15.29.12 NMAC	07/08/2025
Time sampling will commence	08:00 AM
 Warning: Notification can not be less than two business days prior to conducting final sampling. 	
Please provide any information necessary for observers to contact samplers	Carmona Resources – 432-813-8988
Please provide any information necessary for navigation to sampling site	(32.626694, -103.721079) Carmona Resources will be onsite on 07.08.2025 to collect confirmation samples.

Sante Fe Main Office
Phone: (505) 476-3441

General Information
Phone: (505) 629-6116

Online Phone Directory
<https://www.emnrd.nm.gov/oecd/contact-us>

State of New Mexico
Energy, Minerals and Natural Resources
Oil Conservation Division
1220 S. St Francis Dr.
Santa Fe, NM 87505

CONDITIONS

Action 481926

CONDITIONS

Operator: Avant Operating, LLC 6001 Deauville Blvd Midland, TX 79706	OGRID: 330396
	Action Number: 481926
	Action Type: [NOTIFY] Notification Of Sampling (C-141N)

CONDITIONS

Created By	Condition	Condition Date
athielke	Failure to notify the OCD of sampling events including any changes in date/time per the requirements of 19.15.29.12.D.(1).(a) NMAC, may result in the remediation closure samples not being accepted.	7/6/2025
athielke	If confirmation sampling is going to take place over multiple days, individual C-141N applications must be submitted for each sampling date. Date ranges are not currently accepted on the C-141N application.	7/6/2025

APPENDIX D

CARMONA RESOURCES



Nearest water well

COTERRA ENERGY

Legend

- 0.48 Miles
- 0.50 Mile Radius
- Cutbow West CTB 1 (06.06.2025)
- Groundwater Determination Bore



Cutbow West CTB 1 (06.06.2025)



55' GWDB - Drilled 2025



Low Karst

COTERRA ENERGY

Legend

-  Cutbow West CTB 1 (06.06.2025)
-  Low

Cutbow West CTB 1 (06.06.2025)





New Mexico Office of the State Engineer

Water Column/Average Depth to Water

(A CLW##### in the POD suffix indicates the POD has been replaced & no longer serves a water right file.)

(R=POD has been replaced, O=orphaned, C=the file is closed)

(quarters are smallest to largest)

POD Number	Code	Sub basin	County	Q64	Q16	Q4	Sec	Tws	Range	X	Y	Map	Distance (meters)	Well Depth (In feet)	Depth Water	Water Column
CP 00075	O	CP	LE		NE	SE	34	19S	32E	617502.0	3609301.0		2736	575		
CP 01967 POD1		CP	LE	NE	NE	NE	24	19S	32E	620719.8	3613546.4		3056	110		
L 07023		L	LE	NE	SW	SW	32	19S	33E	622840.0	3609047.0 *		3314	262	185	77

Average Depth to Water: 185 feet

Minimum Depth: 185 feet

Maximum Depth: 185 feet

Record Count: 3

UTM Filters (in meters):

Easting: 619910.98
Northing: 3610599.18
Radius: 4000

* UTM location was derived from PLSS - see Help

The data is furnished by the NMOSE/ISC and is accepted by the recipient with the expressed understanding that the OSE/ISC make no warranties, expressed or implied, concerning the accuracy, completeness, reliability, usability, or suitability for any particular purpose of the data.



2904 W 2nd St.
Roswell, NM 88201
voice: 575.624.2420
fax: 575.624.2421
www.atkinseng.com

March 5, 2025

DII-NMOSE
1900 W 2nd Street
Roswell, NM 88201

Hand Delivered to the DII Office of the State Engineer

Re: Well Record CP-2048 Pod-1

To whom it may concern:

Attached please find a well log & record and a plugging record, in duplicate, for a one (1) soil borings, CP-2048 Pod-1.

If you have any questions, please contact me at 575.499.9244 or lucas@atkinseng.com.

Sincerely,

A handwritten signature in black ink, appearing to read "Lucas Middleton".

Lucas Middleton

Enclosures: as noted above



WELL RECORD & LOG

OFFICE OF THE STATE ENGINEER


www.ose.state.nm.us

1. GENERAL AND WELL LOCATION	OSE POD NO. (WELL NO.) POD 1 (TW-1)		WELL TAG ID NO. N/A		OSE FILE NO(S). CP-2048			
	WELL OWNER NAME(S) Walsh & Watts, INC.				PHONE (OPTIONAL)			
	WELL OWNER MAILING ADDRESS 155 Walsh Drive				CITY Aledo	STATE TX	ZIP 76008	
	WELL LOCATION (FROM GPS)	DEGREES LATITUDE 32	MINUTES 37	SECONDS 33.3 N	* ACCURACY REQUIRED: ONE TENTH OF A SECOND			
		LONGITUDE 103	42	49.1 W	* DATUM REQUIRED: WGS 84			
DESCRIPTION RELATING WELL LOCATION TO STREET ADDRESS AND COMMON LANDMARKS – PLSS (SECTION, TOWNSHIP, RANGE) WHERE AVAILABLE Andaway NW SE SE Sec. 25 T19S R32E, NMPM								
2. DRILLING & CASING INFORMATION	LICENSE NO. 1249		NAME OF LICENSED DRILLER Jackie D. Atkins			NAME OF WELL DRILLING COMPANY Atkins Engineering Associates, Inc.		
	DRILLING STARTED 2/12/25	DRILLING ENDED 2/12/25	DEPTH OF COMPLETED WELL (FT) Temporary Well Material		BORE HOLE DEPTH (FT) ±55	DEPTH WATER FIRST ENCOUNTERED (FT) N/A		
	COMPLETED WELL IS: <input type="checkbox"/> ARTESIAN *add Centralizer info below <input checked="" type="checkbox"/> DRY HOLE <input type="checkbox"/> SHALLOW (UNCONFINED)				STATIC WATER LEVEL IN COMPLETED WELL (FT) N/A	DATE STATIC MEASURED 03/04/2024		
	DRILLING FLUID: <input type="checkbox"/> AIR <input type="checkbox"/> MUD ADDITIVES – SPECIFY:							
	DRILLING METHOD: <input type="checkbox"/> ROTARY <input type="checkbox"/> HAMMER <input type="checkbox"/> CABLE TOOL <input checked="" type="checkbox"/> OTHER – SPECIFY: Hollow Stem Auger					CHECK HERE IF PITLESS ADAPTER IS INSTALLED <input type="checkbox"/>		
	DEPTH (feet bgl)		BORE HOLE DIAM. (inches)	CASING MATERIAL AND/OR GRADE (include each casing string, and note sections of screen)	CASING CONNECTION TYPE (add coupling diameter)	CASING INSIDE DIAM. (inches)	CASING WALL THICKNESS (inches)	SLOT SIZE (inches)
	FROM	TO						
	0	55	±6.25	Soil Boring	--	--	--	--
3. ANNULAR MATERIAL	DEPTH (feet bgl)		BORE HOLE DIAM. (inches)	LIST ANNULAR SEAL MATERIAL AND GRAVEL PACK SIZE- RANGE BY INTERVAL <i>*(if using Centralizers for Artesian wells- indicate the spacing below)</i>	AMOUNT (cubic feet)	METHOD OF PLACEMENT		
	FROM	TO						
				N/A				

FOR OSE INTERNAL USE

WR-20 WELL RECORD & LOG (Version 09/22/2022)

FILE NO.	POD NO.	TRN NO.
LOCATION	WELL TAG ID NO.	PAGE 1 OF 2

	DEPTH (feet bgl)		THICKNESS (feet)	COLOR AND TYPE OF MATERIAL ENCOUNTERED - INCLUDE WATER-BEARING CAVITIES OR FRACTURE ZONES (attach supplemental sheets to fully describe all units)	WATER BEARING? (YES / NO)	ESTIMATED YIELD FOR WATER- BEARING ZONES (gpm)
	FROM	TO				
4. HYDROGEOLOGIC LOG OF WELL	0	9	9	Backfill, sand and caliche	Y ✓ N	
	8	14	5	Sand and caliche	Y ✓ N	
	14	24	10	Sand, caliche and increasing clay	Y ✓ N	
	24	55	31	Clay, tight	Y ✓ N	
					Y N	
					Y N	
					Y N	
					Y N	
					Y N	
					Y N	
					Y N	
					Y N	
					Y N	
					Y N	
					Y N	
					Y N	
					Y N	
					Y N	
					Y N	
	METHOD USED TO ESTIMATE YIELD OF WATER-BEARING STRATA: <input type="checkbox"/> PUMP <input type="checkbox"/> AIR LIFT <input type="checkbox"/> BAILER <input type="checkbox"/> OTHER – SPECIFY:					TOTAL ESTIMATED WELL YIELD (gpm):
5. TEST; RIG SUPERVISION	WELL TEST	TEST RESULTS - ATTACH A COPY OF DATA COLLECTED DURING WELL TESTING, INCLUDING DISCHARGE METHOD, START TIME, END TIME, AND A TABLE SHOWING DISCHARGE AND DRAWDOWN OVER THE TESTING PERIOD.				
	MISCELLANEOUS INFORMATION: Temporary well material removed and soil boring backfilled using drill cuttings from total depth to ten feet below ground surface(bgs), then hydrated bentonite chips ten feet bgs to surface. . See attach plugging record. Logs adapted from onsite Terracon Personal					
	PRINT NAME(S) OF DRILL RIG SUPERVISOR(S) THAT PROVIDED ONSITE SUPERVISION OF WELL CONSTRUCTION OTHER THAN LICENSEE: Shane Eldridge, Cameron Pruitt					
6. SIGNATURE	THE UNDERSIGNED HEREBY CERTIFIES THAT, TO THE BEST OF HIS OR HER KNOWLEDGE AND BELIEF, THE FOREGOING IS A TRUE AND CORRECT RECORD OF THE ABOVE DESCRIBED HOLE AND THAT HE OR SHE WILL FILE THIS WELL RECORD WITH THE STATE ENGINEER AND THE PERMIT HOLDER WITHIN 30 DAYS AFTER COMPLETION OF WELL DRILLING:					
	 Jackie D. Atkins (Mar 4, 2025 12:40 MST)		Jackie D. Atkins		03/04/2025	
	SIGNATURE OF DRILLER / PRINT SIGNEE NAME				DATE	

FOR OSE INTERNAL USE		WR-20 WELL RECORD & LOG (Version 09/22/2022)	
FILE NO.	POD NO.	TRN NO.	
LOCATION	WELL TAG ID NO	PAGE 2 OF 2	



PLUGGING RECORD



NOTE: A Well Plugging Plan of Operations shall be approved by the State Engineer prior to plugging - 19.27.4 NMAC

I. GENERAL / WELL OWNERSHIP:

State Engineer Well Number: CP-2048 POD-1
 Well owner: Walsh & Watts, INC. Phone No.: _____
 Mailing address: 155 Walsh Drive
 City: Aledo State: TX Zip code: 76008

II. WELL PLUGGING INFORMATION:

- 1) Name of well drilling company that plugged well: Jackie D. Atkins (Atkins Engineering Associates Inc.)
- 2) New Mexico Well Driller License No.: 1249 Expiration Date: 04/30/25
- 3) Well plugging activities were supervised by the following well driller(s)/rig supervisor(s):
Cameron Pruitt
- 4) Date well plugging began: 03/04/2025 Date well plugging concluded: 03/04/2025
- 5) GPS Well Location: Latitude: 32 deg, 37 min, 33.3 sec
 Longitude: 103 deg, 42 min, 49.1 sec, WGS 84
- 6) Depth of well confirmed at initiation of plugging as: 55 ft below ground level (bgl),
 by the following manner: water level probe
- 7) Static water level measured at initiation of plugging: n/a ft bgl
- 8) Date well plugging plan of operations was approved by the State Engineer: 02/04/2025
- 9) Were all plugging activities consistent with an approved plugging plan? Yes If not, please describe differences between the approved plugging plan and the well as it was plugged (attach additional pages as needed):

- For each interval plugged, describe within the following columns:**

USE OF ROSS-CELL NO
5 APR '25 AM 11:47

III. SIGNATURE:

Jack Atkins (Mar 4, 2025 12:40 MST)

03/04/2025

Date _____






WR-20 Well Record and Log-packet-forsign

Final Audit Report

2025-03-04

Created:	2025-03-04
By:	Lucas Middleton (lucas@atkinseng.com)
Status:	Signed
Transaction ID:	CBJCHBCAABAA8CQwZeAgszwpNQWtCpTlhp04DS79yKAn

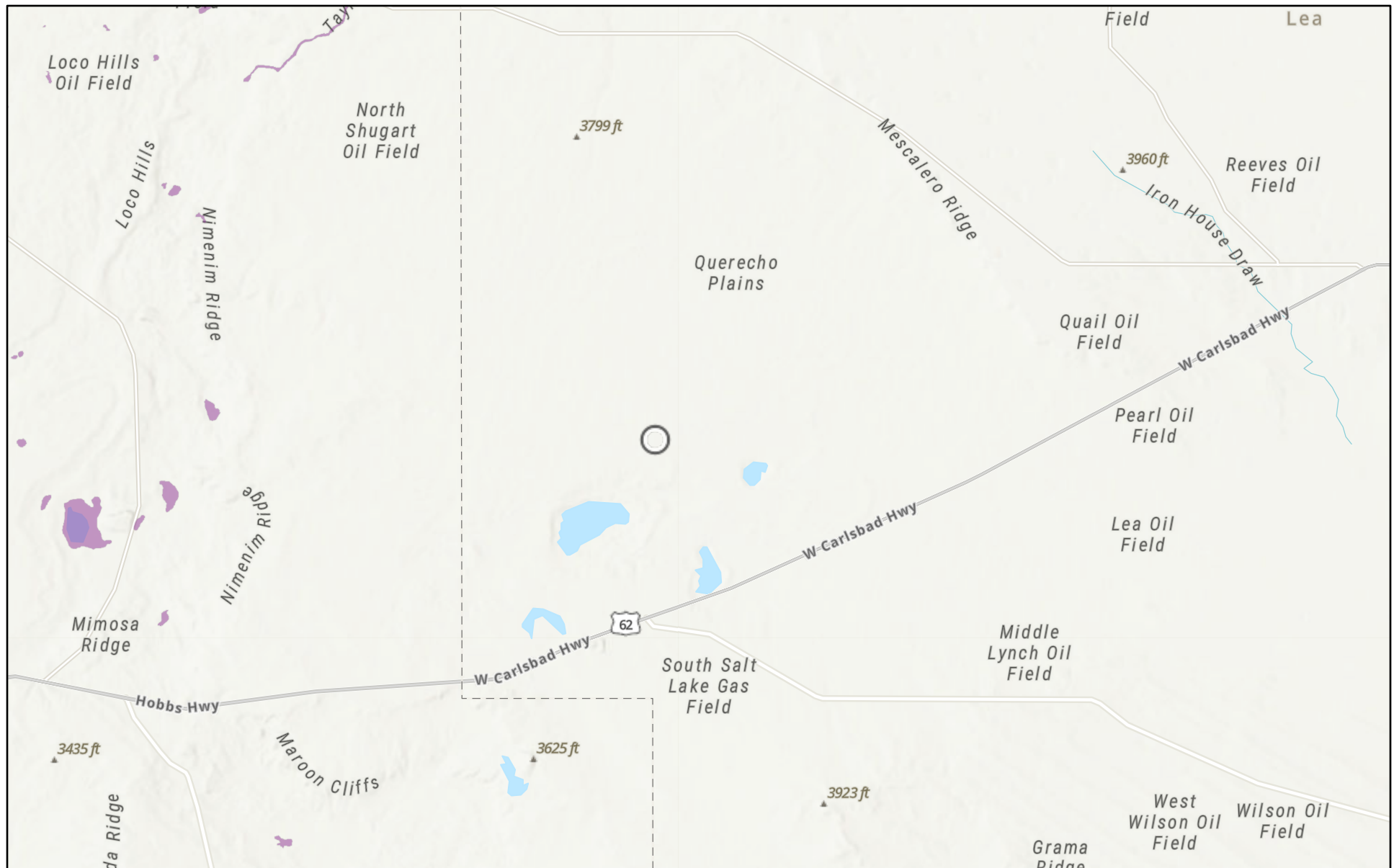
"WR-20 Well Record and Log-packet-forsign" History

-  Document created by Lucas Middleton (lucas@atkinseng.com)
2025-03-04 - 6:53:43 PM GMT
-  Document emailed to Jack Atkins (jack@atkinseng.com) for signature
2025-03-04 - 6:54:09 PM GMT
-  Email viewed by Jack Atkins (jack@atkinseng.com)
2025-03-04 - 7:37:00 PM GMT
-  Document e-signed by Jack Atkins (jack@atkinseng.com)
Signature Date: 2025-03-04 - 7:40:09 PM GMT - Time Source: server
-  Agreement completed.
2025-03-04 - 7:40:09 PM GMT

OSE DISTRICTS WELL NH
5 MAR '25 4:11:47

**Adobe Acrobat Sign**

Cutbow West CTB 1 (6.6.2025)



6/23/2025

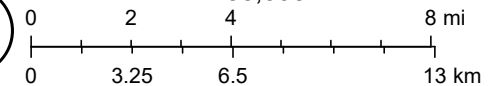
USA Flood Hazard Areas

 1% Annual Chance Flood Hazard

World_Hillshade

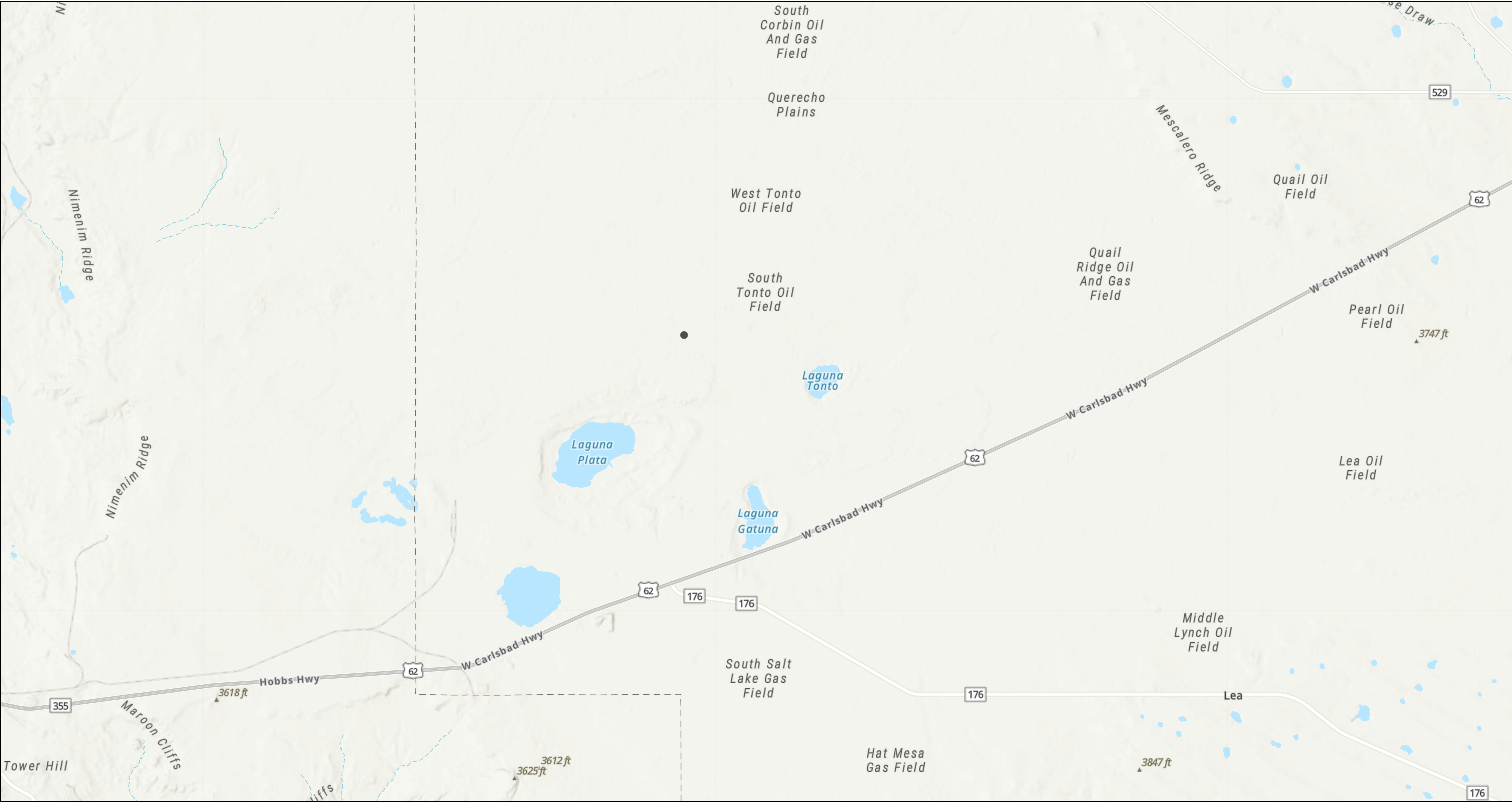


1:288,895



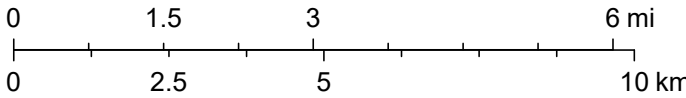
Esri, NASA, NGA, USGS, Sources: Esri, TomTom, Garmin, FAO, NOAA, USGS, (c) OpenStreetMap contributors, and the GIS User Community

Cutbow West CTB 1 (06.06.2025)



6/23/2025, 8:48:02 AM

1:144,448



Esri, NASA, NGA, USGS, Sources: Esri, TomTom, Garmin, FAO, NOAA, USGS, © OpenStreetMap contributors, and the GIS User Community

APPENDIX E

CARMONA RESOURCES





PHONE (575) 393-2326 ° 101 E. MARLAND ° HOBBS, NM 88240

July 14, 2025

ASHTON THIELKE

CARMONA RESOURCES

310 W WALL ST, SUITE 500

MIDLAND, TX 79701

RE: CUTBOW WEST CTB 1

Enclosed are the results of analyses for samples received by the laboratory on 07/10/25 14:20.

Cardinal Laboratories is accredited through Texas NELAP under certificate number TX-C25-00101. Accreditation applies to drinking water, non-potable water and solid and chemical materials. All accredited analytes are denoted by an asterisk (*). For a complete list of accredited analytes and matrices visit the TCEQ website at www.tceq.texas.gov/field/qa/lab_accred_certif.html.

Cardinal Laboratories is accredited through the State of Colorado Department of Public Health and Environment for:

Method EPA 552.2	Haloacetic Acids (HAA-5)
Method EPA 524.2	Total Trihalomethanes (TTHM)
Method EPA 524.4	Regulated VOCs (V1, V2, V3)

Accreditation applies to public drinking water matrices.

This report meets NELAP requirements and is made up of a cover page, analytical results, and a copy of the original chain-of-custody. If you have any questions concerning this report, please feel free to contact me.

Sincerely,

A handwritten signature in black ink that reads "Celey D. Keene". The signature is written in a cursive style with a large, stylized 'C' and 'K'.

Celey D. Keene

Lab Director/Quality Manager



PHONE (575) 393-2326 ° 101 E. MARLAND ° HOBBS, NM 88240

Analytical Results For:

CARMONA RESOURCES
 ASHTON THIELKE
 310 W WALL ST, SUITE 500
 MIDLAND TX, 79701
 Fax To:

Received: 07/10/2025
 Reported: 07/14/2025
 Project Name: CUTBOW WEST CTB 1
 Project Number: 2765
 Project Location: CIMAREX - LEA CO, NEW MEXICO

Sampling Date: 07/08/2025
 Sampling Type: Soil
 Sampling Condition: Cool & Intact
 Sample Received By: Shalyn Rodriguez

Sample ID: H - 1 (0-0.5') (H254121-01)

BTEx 8021B		mg/kg		Analyzed By: JH					
Analyte	Result	Reporting Limit	Analyzed	Method Blank	BS	% Recovery	True Value QC	RPD	Qualifier
Benzene*	<0.050	0.050	07/12/2025	ND	1.98	99.2	2.00	6.31	
Toluene*	<0.050	0.050	07/12/2025	ND	2.10	105	2.00	5.00	
Ethylbenzene*	<0.050	0.050	07/12/2025	ND	1.93	96.6	2.00	5.45	
Total Xylenes*	<0.150	0.150	07/12/2025	ND	5.77	96.2	6.00	4.64	
Total BTEX	<0.300	0.300	07/12/2025	ND					

Surrogate: 4-Bromofluorobenzene (PID) 99.9 % 71.5-134

Chloride, SM4500Cl-B		mg/kg		Analyzed By: AC						
Analyte	Result	Reporting Limit	Analyzed	Method Blank	BS	% Recovery	True Value QC	RPD	Qualifier	
Chloride	288	16.0	07/14/2025	ND	416	104	400	0.00		

TPH 8015M		mg/kg		Analyzed By: MS					
Analyte	Result	Reporting Limit	Analyzed	Method Blank	BS	% Recovery	True Value QC	RPD	Qualifier
GRO C6-C10*	<10.0	10.0	07/11/2025	ND	226	113	200	0.277	
DRO >C10-C28*	13.9	10.0	07/11/2025	ND	218	109	200	0.785	
EXT DRO >C28-C36	<10.0	10.0	07/11/2025	ND					

Surrogate: 1-Chlorooctane 74.7 % 44.4-145

Surrogate: 1-Chlorooctadecane 66.0 % 40.6-153

Cardinal Laboratories

*=Accredited Analyte

PLEASE NOTE: Liability and Damages. Cardinal's liability and client's exclusive remedy for any claim arising, whether based in contract or tort, shall be limited to the amount paid by client for analyses. All claims, including those for negligence and any other cause whatsoever shall be deemed waived unless made in writing and received by Cardinal within thirty (30) days after completion of the applicable service. In no event shall Cardinal be liable for incidental or consequential damages, including, without limitation, business interruptions, loss of use, or loss of profits incurred by client, its subsidiaries, affiliates or successors arising out of or related to the performance of the services hereunder by Cardinal, regardless of whether such claim is based upon any of the above stated reasons or otherwise. Results relate only to the samples identified above. This report shall not be reproduced except in full with written approval of Cardinal Laboratories.

Celey D. Keene, Lab Director/Quality Manager



PHONE (575) 393-2326 ° 101 E. MARLAND ° HOBBS, NM 88240

Analytical Results For:

CARMONA RESOURCES
 ASHTON THIELKE
 310 W WALL ST, SUITE 500
 MIDLAND TX, 79701
 Fax To:

Received: 07/10/2025
 Reported: 07/14/2025
 Project Name: CUTBOW WEST CTB 1
 Project Number: 2765
 Project Location: CIMAREX - LEA CO, NEW MEXICO

Sampling Date: 07/08/2025
 Sampling Type: Soil
 Sampling Condition: Cool & Intact
 Sample Received By: Shalyn Rodriguez

Sample ID: H - 2 (0-0.5') (H254121-02)

BTEx 8021B		mg/kg		Analyzed By: JH						
Analyte	Result	Reporting Limit	Analyzed	Method Blank	BS	% Recovery	True Value QC	RPD	Qualifier	
Benzene*	<0.050	0.050	07/12/2025	ND	1.98	99.2	2.00	6.31		
Toluene*	<0.050	0.050	07/12/2025	ND	2.10	105	2.00	5.00		
Ethylbenzene*	<0.050	0.050	07/12/2025	ND	1.93	96.6	2.00	5.45		
Total Xylenes*	<0.150	0.150	07/12/2025	ND	5.77	96.2	6.00	4.64		
Total BTEX	<0.300	0.300	07/12/2025	ND						

Surrogate: 4-Bromofluorobenzene (PID) 100 % 71.5-134

Chloride, SM4500Cl-B		mg/kg		Analyzed By: AC						
Analyte	Result	Reporting Limit	Analyzed	Method Blank	BS	% Recovery	True Value QC	RPD	Qualifier	
Chloride	160	16.0	07/14/2025	ND	416	104	400	0.00		

TPH 8015M		mg/kg		Analyzed By: MS					
Analyte	Result	Reporting Limit	Analyzed	Method Blank	BS	% Recovery	True Value QC	RPD	Qualifier
GRO C6-C10*	<10.0	10.0	07/11/2025	ND	226	113	200	0.277	
DRO >C10-C28*	<10.0	10.0	07/11/2025	ND	218	109	200	0.785	
EXT DRO >C28-C36	<10.0	10.0	07/11/2025	ND					

Surrogate: 1-Chlorooctane 88.9 % 44.4-145

Surrogate: 1-Chlorooctadecane 79.1 % 40.6-153

Cardinal Laboratories

*=Accredited Analyte

PLEASE NOTE: Liability and Damages. Cardinal's liability and client's exclusive remedy for any claim arising, whether based in contract or tort, shall be limited to the amount paid by client for analyses. All claims, including those for negligence and any other cause whatsoever shall be deemed waived unless made in writing and received by Cardinal within thirty (30) days after completion of the applicable service. In no event shall Cardinal be liable for incidental or consequential damages, including, without limitation, business interruptions, loss of use, or loss of profits incurred by client, its subsidiaries, affiliates or successors arising out of or related to the performance of the services hereunder by Cardinal, regardless of whether such claim is based upon any of the above stated reasons or otherwise. Results relate only to the samples identified above. This report shall not be reproduced except in full with written approval of Cardinal Laboratories.

Celey D. Keene, Lab Director/Quality Manager



PHONE (575) 393-2326 ° 101 E. MARLAND ° HOBBS, NM 88240

Analytical Results For:

CARMONA RESOURCES
 ASHTON THIELKE
 310 W WALL ST, SUITE 500
 MIDLAND TX, 79701
 Fax To:

Received: 07/10/2025
 Reported: 07/14/2025
 Project Name: CUTBOW WEST CTB 1
 Project Number: 2765
 Project Location: CIMAREX - LEA CO, NEW MEXICO

Sampling Date: 07/08/2025
 Sampling Type: Soil
 Sampling Condition: Cool & Intact
 Sample Received By: Shalyn Rodriguez

Sample ID: H - 3 (0-0.5') (H254121-03)

BTEx 8021B		mg/kg		Analyzed By: JH					
Analyte	Result	Reporting Limit	Analyzed	Method Blank	BS	% Recovery	True Value QC	RPD	Qualifier
Benzene*	<0.050	0.050	07/12/2025	ND	1.98	99.2	2.00	6.31	
Toluene*	<0.050	0.050	07/12/2025	ND	2.10	105	2.00	5.00	
Ethylbenzene*	<0.050	0.050	07/12/2025	ND	1.93	96.6	2.00	5.45	
Total Xylenes*	<0.150	0.150	07/12/2025	ND	5.77	96.2	6.00	4.64	
Total BTEX	<0.300	0.300	07/12/2025	ND					

Surrogate: 4-Bromofluorobenzene (PID) 100 % 71.5-134

Chloride, SM4500Cl-B		mg/kg		Analyzed By: AC					
Analyte	Result	Reporting Limit	Analyzed	Method Blank	BS	% Recovery	True Value QC	RPD	Qualifier
Chloride	160	16.0	07/14/2025	ND	416	104	400	0.00	

TPH 8015M		mg/kg		Analyzed By: MS					
Analyte	Result	Reporting Limit	Analyzed	Method Blank	BS	% Recovery	True Value QC	RPD	Qualifier
GRO C6-C10*	<10.0	10.0	07/11/2025	ND	226	113	200	0.277	
DRO >C10-C28*	<10.0	10.0	07/11/2025	ND	218	109	200	0.785	
EXT DRO >C28-C36	<10.0	10.0	07/11/2025	ND					

Surrogate: 1-Chlorooctane 84.4 % 44.4-145

Surrogate: 1-Chlorooctadecane 77.3 % 40.6-153

Cardinal Laboratories

*=Accredited Analyte

PLEASE NOTE: Liability and Damages. Cardinal's liability and client's exclusive remedy for any claim arising, whether based in contract or tort, shall be limited to the amount paid by client for analyses. All claims, including those for negligence and any other cause whatsoever shall be deemed waived unless made in writing and received by Cardinal within thirty (30) days after completion of the applicable service. In no event shall Cardinal be liable for incidental or consequential damages, including, without limitation, business interruptions, loss of use, or loss of profits incurred by client, its subsidiaries, affiliates or successors arising out of or related to the performance of the services hereunder by Cardinal, regardless of whether such claim is based upon any of the above stated reasons or otherwise. Results relate only to the samples identified above. This report shall not be reproduced except in full with written approval of Cardinal Laboratories.

Celey D. Keene, Lab Director/Quality Manager



PHONE (575) 393-2326 ° 101 E. MARLAND ° HOBBS, NM 88240

Analytical Results For:

CARMONA RESOURCES
 ASHTON THIELKE
 310 W WALL ST, SUITE 500
 MIDLAND TX, 79701
 Fax To:

Received: 07/10/2025
 Reported: 07/14/2025
 Project Name: CUTBOW WEST CTB 1
 Project Number: 2765
 Project Location: CIMAREX - LEA CO, NEW MEXICO

Sampling Date: 07/08/2025
 Sampling Type: Soil
 Sampling Condition: Cool & Intact
 Sample Received By: Shalyn Rodriguez

Sample ID: H - 4 (0-0.5') (H254121-04)

BTEx 8021B		mg/ kg		Analyzed By: JH						
Analyte	Result	Reporting Limit	Analyzed	Method Blank	BS	% Recovery	True Value QC	RPD	Qualifier	
Benzene*	<0.050	0.050	07/11/2025	ND	1.70	84.8	2.00	11.3		
Toluene*	<0.050	0.050	07/11/2025	ND	1.76	87.9	2.00	10.6		
Ethylbenzene*	<0.050	0.050	07/11/2025	ND	1.77	88.6	2.00	11.2		
Total Xylenes*	<0.150	0.150	07/11/2025	ND	5.33	88.8	6.00	10.8		
Total BTEX	<0.300	0.300	07/11/2025	ND						

Surrogate: 4-Bromofluorobenzene (PID) 115 % 71.5-134

Chloride, SM4500Cl-B		mg/kg		Analyzed By: AC						
Analyte	Result	Reporting Limit	Analyzed	Method Blank	BS	% Recovery	True Value QC	RPD	Qualifier	
Chloride	256	16.0	07/14/2025	ND	416	104	400	0.00		

TPH 8015M		mg/kg		Analyzed By: MS					
Analyte	Result	Reporting Limit	Analyzed	Method Blank	BS	% Recovery	True Value QC	RPD	Qualifier
GRO C6-C10*	<10.0	10.0	07/11/2025	ND	226	113	200	0.277	
DRO >C10-C28*	26.8	10.0	07/11/2025	ND	218	109	200	0.785	
EXT DRO >C28-C36	14.9	10.0	07/11/2025	ND					

Surrogate: 1-Chlorooctane 94.5 % 44.4-145

Surrogate: 1-Chlorooctadecane 87.4 % 40.6-153

Cardinal Laboratories

*=Accredited Analyte

PLEASE NOTE: Liability and Damages. Cardinal's liability and client's exclusive remedy for any claim arising, whether based in contract or tort, shall be limited to the amount paid by client for analyses. All claims, including those for negligence and any other cause whatsoever shall be deemed waived unless made in writing and received by Cardinal within thirty (30) days after completion of the applicable service. In no event shall Cardinal be liable for incidental or consequential damages, including, without limitation, business interruptions, loss of use, or loss of profits incurred by client, its subsidiaries, affiliates or successors arising out of or related to the performance of the services hereunder by Cardinal, regardless of whether such claim is based upon any of the above stated reasons or otherwise. Results relate only to the samples identified above. This report shall not be reproduced except in full with written approval of Cardinal Laboratories.

Celey D. Keene, Lab Director/Quality Manager

PHONE (575) 393-2326 ° 101 E. MARLAND ° HOBBS, NM 88240

Notes and Definitions

ND	Analyte NOT DETECTED at or above the reporting limit
RPD	Relative Percent Difference
**	Samples not received at proper temperature of 6°C or below.
***	Insufficient time to reach temperature.
-	Chloride by SM4500Cl-B does not require samples be received at or below 6°C Samples reported on an as received basis (wet) unless otherwise noted on report

Cardinal Laboratories

*=Accredited Analyte

PLEASE NOTE: Liability and Damages. Cardinal's liability and client's exclusive remedy for any claim arising, whether based in contract or tort, shall be limited to the amount paid by client for analyses. All claims, including those for negligence and any other cause whatsoever shall be deemed waived unless made in writing and received by Cardinal within thirty (30) days after completion of the applicable service. In no event shall Cardinal be liable for incidental or consequential damages, including, without limitation, business interruptions, loss of use, or loss of profits incurred by client, its subsidiaries, affiliates or successors arising out of or related to the performance of the services hereunder by Cardinal, regardless of whether such claim is based upon any of the above stated reasons or otherwise. Results relate only to the samples identified above. This report shall not be reproduced except in full with written approval of Cardinal Laboratories.

A handwritten signature in black ink, appearing to read "Celey D. Keene".

Celey D. Keene, Lab Director/Quality Manager

Chain of Custody

Work Order No: H254121

Project Manager:	Ashton Thielke	Bill to: (if different)	Laci Luig
Company Name:	Carmona Resources	Company Name:	Cimarex Energy
Address:	310 W Wall St Ste 500	Address:	600 N Marientfield St, Suite 600
City, State ZIP:	Midland, TX 79701	City, State ZIP:	Midland, TX 79701
Phone:	432-813-8988	Email:	laci.luig@coterra.com & ashton.thielke@coterra.com

Work Order Comments	
Program: UST/PST <input type="checkbox"/> PRP <input type="checkbox"/> Brownfields <input type="checkbox"/> RC <input type="checkbox"/> Pertund <input type="checkbox"/>	State of Project:
Reporting Level II <input type="checkbox"/> Level III <input type="checkbox"/> ST/UST <input type="checkbox"/> RRP <input type="checkbox"/> Level IV <input type="checkbox"/>	Deliverables: EDD <input type="checkbox"/> ADAPT <input type="checkbox"/> Other:

Project Name:	Cutbow West CTB 1	Turn Around	<input type="checkbox"/> Routine <input checked="" type="checkbox"/> Rush	Due Date:	48 hr.	Pres. Code	
Project Number:	2765						
Project Location:	Lea County, New Mexico						
Samplers Name:	JDC						
PO #:							
SAMPLE RECEIPT		Temp Blank:	Yes <input checked="" type="checkbox"/> No <input type="checkbox"/>	Wet Ice:	Yes <input checked="" type="checkbox"/> No <input type="checkbox"/>	Parameters	
Received Intact:	Yes <input checked="" type="checkbox"/> No <input type="checkbox"/>	Thermometer ID:				BTEX 8021B	
Cooler Custody Seals:	Yes <input checked="" type="checkbox"/> No <input type="checkbox"/> N/A	Correction Factor:				TPH 8015M (GRO + DRO + MRO)	
Sample Custody Seals:	Yes <input checked="" type="checkbox"/> No <input type="checkbox"/> N/A	Temperature Reading:				Chloride 4500	
Total Containers:		Corrected Temperature:				Hold	

Sample Identification	Date	Time	Soil	Water	Grab/Comp	# of Cont	ANALYSIS REQUEST										Preservative Codes		Sample Comments
H-1 (0-0.5)	7/8/2025		X		G	1	X	X	X										
H-2 (0-0.5)	7/8/2025		X		G	1	X	X	X										
H-3 (0-0.5)	7/8/2025		X		G	1	X	X	X										
H-4 (0-0.5)	7/8/2025		X		G	1	X	X	X										

Comments:

Relinquished by: (Signature)	Date/Time	Received by: (Signature)	Date/Time
<i>[Signature]</i>	7/025 1420	<i>[Signature]</i>	



PHONE (575) 393-2326 ° 101 E. MARLAND ° HOBBS, NM 88240

July 14, 2025

ASHTON THIELKE

CARMONA RESOURCES

310 W WALL ST, SUITE 500

MIDLAND, TX 79701

RE: CUTBOW WEST CTB 1

Enclosed are the results of analyses for samples received by the laboratory on 07/10/25 14:20.

Cardinal Laboratories is accredited through Texas NELAP under certificate number TX-C25-00101. Accreditation applies to drinking water, non-potable water and solid and chemical materials. All accredited analytes are denoted by an asterisk (*). For a complete list of accredited analytes and matrices visit the TCEQ website at www.tceq.texas.gov/field/qa/lab_accred_certif.html.

Cardinal Laboratories is accredited through the State of Colorado Department of Public Health and Environment for:

Method EPA 552.2	Haloacetic Acids (HAA-5)
Method EPA 524.2	Total Trihalomethanes (TTHM)
Method EPA 524.4	Regulated VOCs (V1, V2, V3)

Accreditation applies to public drinking water matrices.

This report meets NELAP requirements and is made up of a cover page, analytical results, and a copy of the original chain-of-custody. If you have any questions concerning this report, please feel free to contact me.

Sincerely,

A handwritten signature in black ink that reads "Celey D. Keene". The signature is written in a cursive style with a large, stylized 'C' and 'K'.

Celey D. Keene

Lab Director/Quality Manager



PHONE (575) 393-2326 ° 101 E. MARLAND ° HOBBS, NM 88240

Analytical Results For:

CARMONA RESOURCES
 ASHTON THIELKE
 310 W WALL ST, SUITE 500
 MIDLAND TX, 79701
 Fax To:

Received: 07/10/2025
 Reported: 07/14/2025
 Project Name: CUTBOW WEST CTB 1
 Project Number: 2765
 Project Location: CIMAREX - LEA CO, NEW MEXICO

Sampling Date: 07/08/2025
 Sampling Type: Soil
 Sampling Condition: Cool & Intact
 Sample Received By: Shalyn Rodriguez

Sample ID: CS - 1 (0.5') (H254122-01)

BTEx 8021B			mg/kg		Analyzed By: JH				
Analyte	Result	Reporting Limit	Analyzed	Method Blank	BS	% Recovery	True Value QC	RPD	Qualifier
Benzene*	<0.050	0.050	07/11/2025	ND	1.70	84.8	2.00	11.3	
Toluene*	<0.050	0.050	07/11/2025	ND	1.76	87.9	2.00	10.6	
Ethylbenzene*	<0.050	0.050	07/11/2025	ND	1.77	88.6	2.00	11.2	
Total Xylenes*	<0.150	0.150	07/11/2025	ND	5.33	88.8	6.00	10.8	
Total BTEX	<0.300	0.300	07/11/2025	ND					

Surrogate: 4-Bromofluorobenzene (PID) 113 % 71.5-134

Chloride, SM4500Cl-B			mg/kg		Analyzed By: AC				
Analyte	Result	Reporting Limit	Analyzed	Method Blank	BS	% Recovery	True Value QC	RPD	Qualifier
Chloride	128	16.0	07/14/2025	ND	416	104	400	0.00	

TPH 8015M			mg/kg		Analyzed By: MS				
Analyte	Result	Reporting Limit	Analyzed	Method Blank	BS	% Recovery	True Value QC	RPD	Qualifier
GRO C6-C10*	<10.0	10.0	07/11/2025	ND	226	113	200	0.277	
DRO >C10-C28*	<10.0	10.0	07/11/2025	ND	218	109	200	0.785	
EXT DRO >C28-C36	<10.0	10.0	07/11/2025	ND					

Surrogate: 1-Chlorooctane 101 % 44.4-145

Surrogate: 1-Chlorooctadecane 91.2 % 40.6-153

Cardinal Laboratories

*=Accredited Analyte

PLEASE NOTE: Liability and Damages. Cardinal's liability and client's exclusive remedy for any claim arising, whether based in contract or tort, shall be limited to the amount paid by client for analyses. All claims, including those for negligence and any other cause whatsoever shall be deemed waived unless made in writing and received by Cardinal within thirty (30) days after completion of the applicable service. In no event shall Cardinal be liable for incidental or consequential damages, including, without limitation, business interruptions, loss of use, or loss of profits incurred by client, its subsidiaries, affiliates or successors arising out of or related to the performance of the services hereunder by Cardinal, regardless of whether such claim is based upon any of the above stated reasons or otherwise. Results relate only to the samples identified above. This report shall not be reproduced except in full with written approval of Cardinal Laboratories.

Celey D. Keene, Lab Director/Quality Manager



PHONE (575) 393-2326 ° 101 E. MARLAND ° HOBBS, NM 88240

Analytical Results For:

CARMONA RESOURCES
 ASHTON THIELKE
 310 W WALL ST, SUITE 500
 MIDLAND TX, 79701
 Fax To:

Received: 07/10/2025
 Reported: 07/14/2025
 Project Name: CUTBOW WEST CTB 1
 Project Number: 2765
 Project Location: CIMAREX - LEA CO, NEW MEXICO

Sampling Date: 07/08/2025
 Sampling Type: Soil
 Sampling Condition: Cool & Intact
 Sample Received By: Shalyn Rodriguez

Sample ID: CS - 2 (0.5') (H254122-02)

BTEx 8021B		mg/kg		Analyzed By: JH						
Analyte	Result	Reporting Limit	Analyzed	Method Blank	BS	% Recovery	True Value QC	RPD	Qualifier	
Benzene*	<0.050	0.050	07/11/2025	ND	1.70	84.8	2.00	11.3		
Toluene*	<0.050	0.050	07/11/2025	ND	1.76	87.9	2.00	10.6		
Ethylbenzene*	<0.050	0.050	07/11/2025	ND	1.77	88.6	2.00	11.2		
Total Xylenes*	<0.150	0.150	07/11/2025	ND	5.33	88.8	6.00	10.8		
Total BTEX	<0.300	0.300	07/11/2025	ND						

Surrogate: 4-Bromofluorobenzene (PID) 115 % 71.5-134

Chloride, SM4500Cl-B		mg/kg		Analyzed By: AC						
Analyte	Result	Reporting Limit	Analyzed	Method Blank	BS	% Recovery	True Value QC	RPD	Qualifier	
Chloride	32.0	16.0	07/14/2025	ND	416	104	400	0.00		

TPH 8015M		mg/kg		Analyzed By: MS					
Analyte	Result	Reporting Limit	Analyzed	Method Blank	BS	% Recovery	True Value QC	RPD	Qualifier
GRO C6-C10*	<10.0	10.0	07/11/2025	ND	226	113	200	0.277	
DRO >C10-C28*	<10.0	10.0	07/11/2025	ND	218	109	200	0.785	
EXT DRO >C28-C36	<10.0	10.0	07/11/2025	ND					

Surrogate: 1-Chlorooctane 91.0 % 44.4-145

Surrogate: 1-Chlorooctadecane 82.6 % 40.6-153

Cardinal Laboratories

*=Accredited Analyte

PLEASE NOTE: Liability and Damages. Cardinal's liability and client's exclusive remedy for any claim arising, whether based in contract or tort, shall be limited to the amount paid by client for analyses. All claims, including those for negligence and any other cause whatsoever shall be deemed waived unless made in writing and received by Cardinal within thirty (30) days after completion of the applicable service. In no event shall Cardinal be liable for incidental or consequential damages, including, without limitation, business interruptions, loss of use, or loss of profits incurred by client, its subsidiaries, affiliates or successors arising out of or related to the performance of the services hereunder by Cardinal, regardless of whether such claim is based upon any of the above stated reasons or otherwise. Results relate only to the samples identified above. This report shall not be reproduced except in full with written approval of Cardinal Laboratories.

Celey D. Keene, Lab Director/Quality Manager



PHONE (575) 393-2326 ° 101 E. MARLAND ° HOBBS, NM 88240

Analytical Results For:

CARMONA RESOURCES
 ASHTON THIELKE
 310 W WALL ST, SUITE 500
 MIDLAND TX, 79701
 Fax To:

Received: 07/10/2025
 Reported: 07/14/2025
 Project Name: CUTBOW WEST CTB 1
 Project Number: 2765
 Project Location: CIMAREX - LEA CO, NEW MEXICO

Sampling Date: 07/08/2025
 Sampling Type: Soil
 Sampling Condition: Cool & Intact
 Sample Received By: Shalyn Rodriguez

Sample ID: CS - 3 (0.5') (H254122-03)

BTEx 8021B		mg/kg		Analyzed By: JH						
Analyte	Result	Reporting Limit	Analyzed	Method Blank	BS	% Recovery	True Value QC	RPD	Qualifier	
Benzene*	<0.050	0.050	07/11/2025	ND	1.70	84.8	2.00	11.3		
Toluene*	<0.050	0.050	07/11/2025	ND	1.76	87.9	2.00	10.6		
Ethylbenzene*	<0.050	0.050	07/11/2025	ND	1.77	88.6	2.00	11.2		
Total Xylenes*	<0.150	0.150	07/11/2025	ND	5.33	88.8	6.00	10.8		
Total BTEX	<0.300	0.300	07/11/2025	ND						

Surrogate: 4-Bromofluorobenzene (PID) 113 % 71.5-134

Chloride, SM4500Cl-B		mg/kg		Analyzed By: AC					
Analyte	Result	Reporting Limit	Analyzed	Method Blank	BS	% Recovery	True Value QC	RPD	Qualifier
Chloride	16.0	16.0	07/14/2025	ND	416	104	400	0.00	

TPH 8015M		mg/kg		Analyzed By: MS					
Analyte	Result	Reporting Limit	Analyzed	Method Blank	BS	% Recovery	True Value QC	RPD	Qualifier
GRO C6-C10*	<10.0	10.0	07/11/2025	ND	226	113	200	0.277	
DRO >C10-C28*	<10.0	10.0	07/11/2025	ND	218	109	200	0.785	
EXT DRO >C28-C36	<10.0	10.0	07/11/2025	ND					

Surrogate: 1-Chlorooctane 94.2 % 44.4-145

Surrogate: 1-Chlorooctadecane 84.2 % 40.6-153

Cardinal Laboratories

*=Accredited Analyte

PLEASE NOTE: Liability and Damages. Cardinal's liability and client's exclusive remedy for any claim arising, whether based in contract or tort, shall be limited to the amount paid by client for analyses. All claims, including those for negligence and any other cause whatsoever shall be deemed waived unless made in writing and received by Cardinal within thirty (30) days after completion of the applicable service. In no event shall Cardinal be liable for incidental or consequential damages, including, without limitation, business interruptions, loss of use, or loss of profits incurred by client, its subsidiaries, affiliates or successors arising out of or related to the performance of the services hereunder by Cardinal, regardless of whether such claim is based upon any of the above stated reasons or otherwise. Results relate only to the samples identified above. This report shall not be reproduced except in full with written approval of Cardinal Laboratories.

Celey D. Keene, Lab Director/Quality Manager



PHONE (575) 393-2326 ° 101 E. MARLAND ° HOBBS, NM 88240

Analytical Results For:

CARMONA RESOURCES
 ASHTON THIELKE
 310 W WALL ST, SUITE 500
 MIDLAND TX, 79701
 Fax To:

Received: 07/10/2025
 Reported: 07/14/2025
 Project Name: CUTBOW WEST CTB 1
 Project Number: 2765
 Project Location: CIMAREX - LEA CO, NEW MEXICO

Sampling Date: 07/08/2025
 Sampling Type: Soil
 Sampling Condition: Cool & Intact
 Sample Received By: Shalyn Rodriguez

Sample ID: CS - 4 (0.5') (H254122-04)

BTEx 8021B		mg/kg		Analyzed By: JH						
Analyte	Result	Reporting Limit	Analyzed	Method Blank	BS	% Recovery	True Value QC	RPD	Qualifier	
Benzene*	<0.050	0.050	07/11/2025	ND	1.70	84.8	2.00	11.3		
Toluene*	<0.050	0.050	07/11/2025	ND	1.76	87.9	2.00	10.6		
Ethylbenzene*	<0.050	0.050	07/11/2025	ND	1.77	88.6	2.00	11.2		
Total Xylenes*	<0.150	0.150	07/11/2025	ND	5.33	88.8	6.00	10.8		
Total BTEX	<0.300	0.300	07/11/2025	ND						

Surrogate: 4-Bromofluorobenzene (PID) 112 % 71.5-134

Chloride, SM4500Cl-B		mg/kg		Analyzed By: AC						
Analyte	Result	Reporting Limit	Analyzed	Method Blank	BS	% Recovery	True Value QC	RPD	Qualifier	
Chloride	<16.0	16.0	07/14/2025	ND	416	104	400	0.00		

TPH 8015M		mg/kg		Analyzed By: MS					
Analyte	Result	Reporting Limit	Analyzed	Method Blank	BS	% Recovery	True Value QC	RPD	Qualifier
GRO C6-C10*	<10.0	10.0	07/11/2025	ND	226	113	200	0.277	
DRO >C10-C28*	<10.0	10.0	07/11/2025	ND	218	109	200	0.785	
EXT DRO >C28-C36	<10.0	10.0	07/11/2025	ND					

Surrogate: 1-Chlorooctane 96.3 % 44.4-145

Surrogate: 1-Chlorooctadecane 86.4 % 40.6-153

Cardinal Laboratories

*=Accredited Analyte

PLEASE NOTE: Liability and Damages. Cardinal's liability and client's exclusive remedy for any claim arising, whether based in contract or tort, shall be limited to the amount paid by client for analyses. All claims, including those for negligence and any other cause whatsoever shall be deemed waived unless made in writing and received by Cardinal within thirty (30) days after completion of the applicable service. In no event shall Cardinal be liable for incidental or consequential damages, including, without limitation, business interruptions, loss of use, or loss of profits incurred by client, its subsidiaries, affiliates or successors arising out of or related to the performance of the services hereunder by Cardinal, regardless of whether such claim is based upon any of the above stated reasons or otherwise. Results relate only to the samples identified above. This report shall not be reproduced except in full with written approval of Cardinal Laboratories.

Celey D. Keene, Lab Director/Quality Manager



PHONE (575) 393-2326 ° 101 E. MARLAND ° HOBBS, NM 88240

Analytical Results For:

CARMONA RESOURCES
 ASHTON THIELKE
 310 W WALL ST, SUITE 500
 MIDLAND TX, 79701
 Fax To:

Received: 07/10/2025
 Reported: 07/14/2025
 Project Name: CUTBOW WEST CTB 1
 Project Number: 2765
 Project Location: CIMAREX - LEA CO, NEW MEXICO

Sampling Date: 07/08/2025
 Sampling Type: Soil
 Sampling Condition: Cool & Intact
 Sample Received By: Shalyn Rodriguez

Sample ID: CS - 5 (0.5') (H254122-05)

BTEx 8021B		mg/kg		Analyzed By: JH						
Analyte	Result	Reporting Limit	Analyzed	Method Blank	BS	% Recovery	True Value QC	RPD	Qualifier	
Benzene*	<0.050	0.050	07/11/2025	ND	1.70	84.8	2.00	11.3		
Toluene*	<0.050	0.050	07/11/2025	ND	1.76	87.9	2.00	10.6		
Ethylbenzene*	<0.050	0.050	07/11/2025	ND	1.77	88.6	2.00	11.2		
Total Xylenes*	<0.150	0.150	07/11/2025	ND	5.33	88.8	6.00	10.8		
Total BTEX	<0.300	0.300	07/11/2025	ND						

Surrogate: 4-Bromofluorobenzene (PID) 115 % 71.5-134

Chloride, SM4500Cl-B		mg/kg		Analyzed By: AC					
Analyte	Result	Reporting Limit	Analyzed	Method Blank	BS	% Recovery	True Value QC	RPD	Qualifier
Chloride	48.0	16.0	07/14/2025	ND	416	104	400	0.00	

TPH 8015M		mg/kg		Analyzed By: MS					
Analyte	Result	Reporting Limit	Analyzed	Method Blank	BS	% Recovery	True Value QC	RPD	Qualifier
GRO C6-C10*	<10.0	10.0	07/11/2025	ND	208	104	200	3.73	
DRO >C10-C28*	<10.0	10.0	07/11/2025	ND	227	114	200	3.81	
EXT DRO >C28-C36	<10.0	10.0	07/11/2025	ND					

Surrogate: 1-Chlorooctane 83.1 % 44.4-145

Surrogate: 1-Chlorooctadecane 82.7 % 40.6-153

Cardinal Laboratories

*=Accredited Analyte

PLEASE NOTE: Liability and Damages. Cardinal's liability and client's exclusive remedy for any claim arising, whether based in contract or tort, shall be limited to the amount paid by client for analyses. All claims, including those for negligence and any other cause whatsoever shall be deemed waived unless made in writing and received by Cardinal within thirty (30) days after completion of the applicable service. In no event shall Cardinal be liable for incidental or consequential damages, including, without limitation, business interruptions, loss of use, or loss of profits incurred by client, its subsidiaries, affiliates or successors arising out of or related to the performance of the services hereunder by Cardinal, regardless of whether such claim is based upon any of the above stated reasons or otherwise. Results relate only to the samples identified above. This report shall not be reproduced except in full with written approval of Cardinal Laboratories.

Celey D. Keene, Lab Director/Quality Manager



PHONE (575) 393-2326 ° 101 E. MARLAND ° HOBBS, NM 88240

Analytical Results For:

CARMONA RESOURCES
 ASHTON THIELKE
 310 W WALL ST, SUITE 500
 MIDLAND TX, 79701
 Fax To:

Received: 07/10/2025
 Reported: 07/14/2025
 Project Name: CUTBOW WEST CTB 1
 Project Number: 2765
 Project Location: CIMAREX - LEA CO, NEW MEXICO

Sampling Date: 07/08/2025
 Sampling Type: Soil
 Sampling Condition: Cool & Intact
 Sample Received By: Shalyn Rodriguez

Sample ID: CS - 6 (0.5') (H254122-06)

BTEx 8021B		mg/kg		Analyzed By: JH						
Analyte	Result	Reporting Limit	Analyzed	Method Blank	BS	% Recovery	True Value QC	RPD	Qualifier	
Benzene*	<0.050	0.050	07/11/2025	ND	1.70	84.8	2.00	11.3		
Toluene*	<0.050	0.050	07/11/2025	ND	1.76	87.9	2.00	10.6		
Ethylbenzene*	<0.050	0.050	07/11/2025	ND	1.77	88.6	2.00	11.2		
Total Xylenes*	<0.150	0.150	07/11/2025	ND	5.33	88.8	6.00	10.8		
Total BTEX	<0.300	0.300	07/11/2025	ND						

Surrogate: 4-Bromofluorobenzene (PID) 114 % 71.5-134

Chloride, SM4500Cl-B		mg/kg		Analyzed By: AC					
Analyte	Result	Reporting Limit	Analyzed	Method Blank	BS	% Recovery	True Value QC	RPD	Qualifier
Chloride	48.0	16.0	07/14/2025	ND	416	104	400	0.00	

TPH 8015M		mg/kg		Analyzed By: MS					
Analyte	Result	Reporting Limit	Analyzed	Method Blank	BS	% Recovery	True Value QC	RPD	Qualifier
GRO C6-C10*	<10.0	10.0	07/11/2025	ND	208	104	200	3.73	
DRO >C10-C28*	<10.0	10.0	07/11/2025	ND	227	114	200	3.81	
EXT DRO >C28-C36	<10.0	10.0	07/11/2025	ND					

Surrogate: 1-Chlorooctane 82.3 % 44.4-145

Surrogate: 1-Chlorooctadecane 82.5 % 40.6-153

Cardinal Laboratories

*=Accredited Analyte

PLEASE NOTE: Liability and Damages. Cardinal's liability and client's exclusive remedy for any claim arising, whether based in contract or tort, shall be limited to the amount paid by client for analyses. All claims, including those for negligence and any other cause whatsoever shall be deemed waived unless made in writing and received by Cardinal within thirty (30) days after completion of the applicable service. In no event shall Cardinal be liable for incidental or consequential damages, including, without limitation, business interruptions, loss of use, or loss of profits incurred by client, its subsidiaries, affiliates or successors arising out of or related to the performance of the services hereunder by Cardinal, regardless of whether such claim is based upon any of the above stated reasons or otherwise. Results relate only to the samples identified above. This report shall not be reproduced except in full with written approval of Cardinal Laboratories.

Celey D. Keene, Lab Director/Quality Manager



PHONE (575) 393-2326 ° 101 E. MARLAND ° HOBBS, NM 88240

Analytical Results For:

CARMONA RESOURCES
 ASHTON THIELKE
 310 W WALL ST, SUITE 500
 MIDLAND TX, 79701
 Fax To:

Received: 07/10/2025
 Reported: 07/14/2025
 Project Name: CUTBOW WEST CTB 1
 Project Number: 2765
 Project Location: CIMAREX - LEA CO, NEW MEXICO

Sampling Date: 07/08/2025
 Sampling Type: Soil
 Sampling Condition: Cool & Intact
 Sample Received By: Shalyn Rodriguez

Sample ID: CS - 7 (0.5') (H254122-07)

BTEx 8021B		mg/kg		Analyzed By: JH					
Analyte	Result	Reporting Limit	Analyzed	Method Blank	BS	% Recovery	True Value QC	RPD	Qualifier
Benzene*	<0.050	0.050	07/11/2025	ND	1.70	84.8	2.00	11.3	
Toluene*	<0.050	0.050	07/11/2025	ND	1.76	87.9	2.00	10.6	
Ethylbenzene*	<0.050	0.050	07/11/2025	ND	1.77	88.6	2.00	11.2	
Total Xylenes*	<0.150	0.150	07/11/2025	ND	5.33	88.8	6.00	10.8	
Total BTEX	<0.300	0.300	07/11/2025	ND					

Surrogate: 4-Bromofluorobenzene (PID) 115 % 71.5-134

Chloride, SM4500Cl-B		mg/kg		Analyzed By: AC					
Analyte	Result	Reporting Limit	Analyzed	Method Blank	BS	% Recovery	True Value QC	RPD	Qualifier
Chloride	64.0	16.0	07/14/2025	ND	416	104	400	0.00	

TPH 8015M		mg/kg		Analyzed By: MS					
Analyte	Result	Reporting Limit	Analyzed	Method Blank	BS	% Recovery	True Value QC	RPD	Qualifier
GRO C6-C10*	<10.0	10.0	07/11/2025	ND	208	104	200	3.73	
DRO >C10-C28*	<10.0	10.0	07/11/2025	ND	227	114	200	3.81	
EXT DRO >C28-C36	<10.0	10.0	07/11/2025	ND					

Surrogate: 1-Chlorooctane 83.7 % 44.4-145

Surrogate: 1-Chlorooctadecane 84.3 % 40.6-153

Cardinal Laboratories

*=Accredited Analyte

PLEASE NOTE: Liability and Damages. Cardinal's liability and client's exclusive remedy for any claim arising, whether based in contract or tort, shall be limited to the amount paid by client for analyses. All claims, including those for negligence and any other cause whatsoever shall be deemed waived unless made in writing and received by Cardinal within thirty (30) days after completion of the applicable service. In no event shall Cardinal be liable for incidental or consequential damages, including, without limitation, business interruptions, loss of use, or loss of profits incurred by client, its subsidiaries, affiliates or successors arising out of or related to the performance of the services hereunder by Cardinal, regardless of whether such claim is based upon any of the above stated reasons or otherwise. Results relate only to the samples identified above. This report shall not be reproduced except in full with written approval of Cardinal Laboratories.

Celey D. Keene, Lab Director/Quality Manager



PHONE (575) 393-2326 ° 101 E. MARLAND ° HOBBS, NM 88240

Analytical Results For:

CARMONA RESOURCES
 ASHTON THIELKE
 310 W WALL ST, SUITE 500
 MIDLAND TX, 79701
 Fax To:

Received: 07/10/2025
 Reported: 07/14/2025
 Project Name: CUTBOW WEST CTB 1
 Project Number: 2765
 Project Location: CIMAREX - LEA CO, NEW MEXICO

Sampling Date: 07/08/2025
 Sampling Type: Soil
 Sampling Condition: Cool & Intact
 Sample Received By: Shalyn Rodriguez

Sample ID: CS - 8 (0.5') (H254122-08)

BTEx 8021B		mg/kg		Analyzed By: JH						
Analyte	Result	Reporting Limit	Analyzed	Method Blank	BS	% Recovery	True Value QC	RPD	Qualifier	
Benzene*	<0.050	0.050	07/11/2025	ND	1.70	84.8	2.00	11.3		
Toluene*	<0.050	0.050	07/11/2025	ND	1.76	87.9	2.00	10.6		
Ethylbenzene*	<0.050	0.050	07/11/2025	ND	1.77	88.6	2.00	11.2		
Total Xylenes*	<0.150	0.150	07/11/2025	ND	5.33	88.8	6.00	10.8		
Total BTEX	<0.300	0.300	07/11/2025	ND						

Surrogate: 4-Bromofluorobenzene (PID) 114 % 71.5-134

Chloride, SM4500Cl-B		mg/kg		Analyzed By: AC						
Analyte	Result	Reporting Limit	Analyzed	Method Blank	BS	% Recovery	True Value QC	RPD	Qualifier	
Chloride	48.0	16.0	07/14/2025	ND	416	104	400	0.00		

TPH 8015M		mg/kg		Analyzed By: MS					
Analyte	Result	Reporting Limit	Analyzed	Method Blank	BS	% Recovery	True Value QC	RPD	Qualifier
GRO C6-C10*	<10.0	10.0	07/11/2025	ND	208	104	200	3.73	
DRO >C10-C28*	<10.0	10.0	07/11/2025	ND	227	114	200	3.81	
EXT DRO >C28-C36	<10.0	10.0	07/11/2025	ND					

Surrogate: 1-Chlorooctane 82.2 % 44.4-145

Surrogate: 1-Chlorooctadecane 82.6 % 40.6-153

Cardinal Laboratories

*=Accredited Analyte

PLEASE NOTE: Liability and Damages. Cardinal's liability and client's exclusive remedy for any claim arising, whether based in contract or tort, shall be limited to the amount paid by client for analyses. All claims, including those for negligence and any other cause whatsoever shall be deemed waived unless made in writing and received by Cardinal within thirty (30) days after completion of the applicable service. In no event shall Cardinal be liable for incidental or consequential damages, including, without limitation, business interruptions, loss of use, or loss of profits incurred by client, its subsidiaries, affiliates or successors arising out of or related to the performance of the services hereunder by Cardinal, regardless of whether such claim is based upon any of the above stated reasons or otherwise. Results relate only to the samples identified above. This report shall not be reproduced except in full with written approval of Cardinal Laboratories.

Celey D. Keene, Lab Director/Quality Manager



PHONE (575) 393-2326 ° 101 E. MARLAND ° HOBBS, NM 88240

Analytical Results For:

CARMONA RESOURCES
 ASHTON THIELKE
 310 W WALL ST, SUITE 500
 MIDLAND TX, 79701
 Fax To:

Received: 07/10/2025
 Reported: 07/14/2025
 Project Name: CUTBOW WEST CTB 1
 Project Number: 2765
 Project Location: CIMAREX - LEA CO, NEW MEXICO

Sampling Date: 07/08/2025
 Sampling Type: Soil
 Sampling Condition: Cool & Intact
 Sample Received By: Shalyn Rodriguez

Sample ID: CS - 9 (0.5') (H254122-09)

BTEx 8021B		mg/kg		Analyzed By: JH					
Analyte	Result	Reporting Limit	Analyzed	Method Blank	BS	% Recovery	True Value QC	RPD	Qualifier
Benzene*	<0.050	0.050	07/11/2025	ND	1.70	84.8	2.00	11.3	
Toluene*	<0.050	0.050	07/11/2025	ND	1.76	87.9	2.00	10.6	
Ethylbenzene*	<0.050	0.050	07/11/2025	ND	1.77	88.6	2.00	11.2	
Total Xylenes*	<0.150	0.150	07/11/2025	ND	5.33	88.8	6.00	10.8	
Total BTEX	<0.300	0.300	07/11/2025	ND					

Surrogate: 4-Bromofluorobenzene (PID) 116 % 71.5-134

Chloride, SM4500Cl-B		mg/kg		Analyzed By: KH					
Analyte	Result	Reporting Limit	Analyzed	Method Blank	BS	% Recovery	True Value QC	RPD	Qualifier
Chloride	48.0	16.0	07/14/2025	ND	400	100	400	3.92	

TPH 8015M		mg/kg		Analyzed By: MS					
Analyte	Result	Reporting Limit	Analyzed	Method Blank	BS	% Recovery	True Value QC	RPD	Qualifier
GRO C6-C10*	<10.0	10.0	07/11/2025	ND	208	104	200	3.73	
DRO >C10-C28*	<10.0	10.0	07/11/2025	ND	227	114	200	3.81	
EXT DRO >C28-C36	<10.0	10.0	07/11/2025	ND					

Surrogate: 1-Chlorooctane 78.5 % 44.4-145

Surrogate: 1-Chlorooctadecane 76.6 % 40.6-153

Cardinal Laboratories

*=Accredited Analyte

PLEASE NOTE: Liability and Damages. Cardinal's liability and client's exclusive remedy for any claim arising, whether based in contract or tort, shall be limited to the amount paid by client for analyses. All claims, including those for negligence and any other cause whatsoever shall be deemed waived unless made in writing and received by Cardinal within thirty (30) days after completion of the applicable service. In no event shall Cardinal be liable for incidental or consequential damages, including, without limitation, business interruptions, loss of use, or loss of profits incurred by client, its subsidiaries, affiliates or successors arising out of or related to the performance of the services hereunder by Cardinal, regardless of whether such claim is based upon any of the above stated reasons or otherwise. Results relate only to the samples identified above. This report shall not be reproduced except in full with written approval of Cardinal Laboratories.

Celey D. Keene, Lab Director/Quality Manager



PHONE (575) 393-2326 ° 101 E. MARLAND ° HOBBS, NM 88240

Notes and Definitions

ND	Analyte NOT DETECTED at or above the reporting limit
RPD	Relative Percent Difference
**	Samples not received at proper temperature of 6°C or below.
***	Insufficient time to reach temperature.
-	Chloride by SM4500Cl-B does not require samples be received at or below 6°C Samples reported on an as received basis (wet) unless otherwise noted on report

Cardinal Laboratories

*=Accredited Analyte

PLEASE NOTE: Liability and Damages. Cardinal's liability and client's exclusive remedy for any claim arising, whether based in contract or tort, shall be limited to the amount paid by client for analyses. All claims, including those for negligence and any other cause whatsoever shall be deemed waived unless made in writing and received by Cardinal within thirty (30) days after completion of the applicable service. In no event shall Cardinal be liable for incidental or consequential damages, including, without limitation, business interruptions, loss of use, or loss of profits incurred by client, its subsidiaries, affiliates or successors arising out of or related to the performance of the services hereunder by Cardinal, regardless of whether such claim is based upon any of the above stated reasons or otherwise. Results relate only to the samples identified above. This report shall not be reproduced except in full with written approval of Cardinal Laboratories.

A handwritten signature in cursive script, appearing to read "Celey D. Keene".

Celey D. Keene, Lab Director/Quality Manager

Chain of Custody

Work Order No: 4254122

Project Manager: Ashton Thielke		Bill to: (if different) Company Name: Cimarex Energy	
Company Name: Camrona Resources		Address: 600 N Mainfield St, Suite 600	
Address: 310 W Wall St Ste 500		City, State ZIP: Midland, TX 79701	
City, State ZIP: Midland, TX 79701		Email: laeli.lug@coterra.com & ashton.thielke@coterra.com	
Phone: 432-813-8988			
Project Name: Cutbow West CTB 1			
Project Number: 2765		<input type="checkbox"/> Routine <input checked="" type="checkbox"/> Rush	
Project Location: Lea County, New Mexico		Due Date: 48 hr.	
Sampler's Name: JDC			
PO #:			
SAMPLE RECEIPT			
Received Intact: Yes	Temp Blank: No	Yes	No
Cooler Custody Seals: Yes	Thermometer ID: 140	Yes	No
Sample Custody Seals: Yes	Correction Factor: 4.3	Yes	No
Total Containers: Yes	Temperature Reading: 4.9	Yes	No
Corrected Temperature: 5.2			
Parameters			
BTEX 8021B			
TPH 8015M (GRO + DRO + MRO)			
Chloride 4500			
ANALYSIS REQUEST			
Work Order Comments			
Program: UST/PST <input type="checkbox"/> PRP <input type="checkbox"/> Brownfields <input type="checkbox"/> RC <input type="checkbox"/> Deepfund			
State of Project: <input type="checkbox"/> Level II <input type="checkbox"/> Level III <input type="checkbox"/> ST/UST <input type="checkbox"/> RRP <input type="checkbox"/> Level IV			
Reporting Level: <input type="checkbox"/> EDD <input type="checkbox"/> ADAPT <input type="checkbox"/> Other:			
Preservative Codes			
None: NO			
Cool: Cool			
HCL: HC			
H2SO4: H2			
H3PO4: HP			
NaHSO4: NABIS			
Na2S2O5: NaSO3			
Zn Acetate+NaOH: Zn			
NaOH+Ascorbic Acid: SACP			
Sample Identification			
CS-1 (0.5)	7/8/2025	X	X
CS-2 (0.5)	7/8/2025	X	X
CS-3 (0.5)	7/8/2025	X	X
CS-4 (0.5)	7/8/2025	X	X
CS-5 (0.5)	7/8/2025	X	X
CS-6 (0.5)	7/8/2025	X	X
CS-7 (0.5)	7/8/2025	X	X
CS-8 (0.5)	7/8/2025	X	X
CS-9 (0.5)	7/8/2025	X	X

Comments:

Relinquished by: (Signature)

[Signature]

Date/Time

7:10:25 1430

Received by: (Signature)

[Signature]

Date/Time



PHONE (575) 393-2326 ° 101 E. MARLAND ° HOBBS, NM 88240

July 16, 2025

ASHTON THIELKE

CARMONA RESOURCES

310 W WALL ST, SUITE 500

MIDLAND, TX 79701

RE: CUTBOW WEST CTB 1

Enclosed are the results of analyses for samples received by the laboratory on 07/14/25 13:50.

Cardinal Laboratories is accredited through Texas NELAP under certificate number TX-C25-00101. Accreditation applies to drinking water, non-potable water and solid and chemical materials. All accredited analytes are denoted by an asterisk (*). For a complete list of accredited analytes and matrices visit the TCEQ website at www.tceq.texas.gov/field/qa/lab_accred_certif.html.

Cardinal Laboratories is accredited through the State of Colorado Department of Public Health and Environment for:

Method EPA 552.2	Haloacetic Acids (HAA-5)
Method EPA 524.2	Total Trihalomethanes (TTHM)
Method EPA 524.4	Regulated VOCs (V1, V2, V3)

Accreditation applies to public drinking water matrices.

This report meets NELAP requirements and is made up of a cover page, analytical results, and a copy of the original chain-of-custody. If you have any questions concerning this report, please feel free to contact me.

Sincerely,

A handwritten signature in black ink that reads "Celey D. Keene". The signature is fluid and cursive, with the first name "Celey" and last name "Keene" clearly distinguishable.

Celey D. Keene

Lab Director/Quality Manager



PHONE (575) 393-2326 ° 101 E. MARLAND ° HOBBS, NM 88240

Analytical Results For:

CARMONA RESOURCES
 ASHTON THIELKE
 310 W WALL ST, SUITE 500
 MIDLAND TX, 79701
 Fax To:

Received: 07/14/2025
 Reported: 07/16/2025
 Project Name: CUTBOW WEST CTB 1
 Project Number: 2765 (06-06-2025)
 Project Location: CIMAREX - LEA CO, NEW MEXICO

Sampling Date: 07/14/2025
 Sampling Type: Soil
 Sampling Condition: Cool & Intact
 Sample Received By: Tamara Oldaker

Sample ID: BACKFILL SAMPLE (H254172-01)

BTX 8021B		mg/kg		Analyzed By: JH					
Analyte	Result	Reporting Limit	Analyzed	Method Blank	BS	% Recovery	True Value QC	RPD	Qualifier
Benzene*	<0.050	0.050	07/15/2025	ND	1.79	89.5	2.00	4.85	
Toluene*	<0.050	0.050	07/15/2025	ND	2.07	104	2.00	3.94	
Ethylbenzene*	<0.050	0.050	07/15/2025	ND	2.09	105	2.00	1.91	
Total Xylenes*	<0.150	0.150	07/15/2025	ND	6.53	109	6.00	3.13	
Total BTX	<0.300	0.300	07/15/2025	ND					

Surrogate: 4-Bromofluorobenzene (PID) 106 % 71.5-134

Chloride, SM4500Cl-B		mg/kg		Analyzed By: KH						
Analyte	Result	Reporting Limit	Analyzed	Method Blank	BS	% Recovery	True Value QC	RPD	Qualifier	
Chloride	32.0	16.0	07/15/2025	ND	416	104	400	0.00		

TPH 8015M		mg/kg		Analyzed By: MS					
Analyte	Result	Reporting Limit	Analyzed	Method Blank	BS	% Recovery	True Value QC	RPD	Qualifier
GRO C6-C10*	<10.0	10.0	07/15/2025	ND	210	105	200	1.63	
DRO >C10-C28*	30.1	10.0	07/15/2025	ND	190	94.9	200	0.0332	
EXT DRO >C28-C36	<10.0	10.0	07/15/2025	ND					

Surrogate: 1-Chlorooctane 110 % 44.4-145

Surrogate: 1-Chlorooctadecane 111 % 40.6-153

Cardinal Laboratories

*=Accredited Analyte

PLEASE NOTE: Liability and Damages. Cardinal's liability and client's exclusive remedy for any claim arising, whether based in contract or tort, shall be limited to the amount paid by client for analyses. All claims, including those for negligence and any other cause whatsoever shall be deemed waived unless made in writing and received by Cardinal within thirty (30) days after completion of the applicable service. In no event shall Cardinal be liable for incidental or consequential damages, including, without limitation, business interruptions, loss of use, or loss of profits incurred by client, its subsidiaries, affiliates or successors arising out of or related to the performance of the services hereunder by Cardinal, regardless of whether such claim is based upon any of the above stated reasons or otherwise. Results relate only to the samples identified above. This report shall not be reproduced except in full with written approval of Cardinal Laboratories.

Celey D. Keene, Lab Director/Quality Manager



PHONE (575) 393-2326 ° 101 E. MARLAND ° HOBBS, NM 88240

Notes and Definitions

ND	Analyte NOT DETECTED at or above the reporting limit
RPD	Relative Percent Difference
**	Samples not received at proper temperature of 6°C or below.
***	Insufficient time to reach temperature.
-	Chloride by SM4500Cl-B does not require samples be received at or below 6°C Samples reported on an as received basis (wet) unless otherwise noted on report

Cardinal Laboratories

*=Accredited Analyte

PLEASE NOTE: Liability and Damages. Cardinal's liability and client's exclusive remedy for any claim arising, whether based in contract or tort, shall be limited to the amount paid by client for analyses. All claims, including those for negligence and any other cause whatsoever shall be deemed waived unless made in writing and received by Cardinal within thirty (30) days after completion of the applicable service. In no event shall Cardinal be liable for incidental or consequential damages, including, without limitation, business interruptions, loss of use, or loss of profits incurred by client, its subsidiaries, affiliates or successors arising out of or related to the performance of the services hereunder by Cardinal, regardless of whether such claim is based upon any of the above stated reasons or otherwise. Results relate only to the samples identified above. This report shall not be reproduced except in full with written approval of Cardinal Laboratories.

A handwritten signature in black ink, appearing to read "Celey D. Keene".

Celey D. Keene, Lab Director/Quality Manager

Chain of Custody

Work Order No.:

A25417

Page 4 of 4

Project Manager:	Ashton Thielke	Bill to: (if different)	Laci Luig
Company Name:	Carmona Resources	Company Name:	Cimarex Energy
Address:	310 W Wall St Ste 500	Address:	600 N Mariefield St, Suite 600
City, State ZIP:	Midland, TX 79701	City, State ZIP:	Midland, TX 79701
Phone:	432-813-8988	Email:	laci.luig@coterra.com & ashton.thielke@coterra.com

Work Order Comments

Program: UST/PST ☐ PRP ☐ Brownfields ☐ RC ☐ Superfund ☐

State of Project:

Reporting Level II ☐ Level III ☐ ST/UST ☐ RRP • ☐ Level IV ☐

Deliverables: EDD ☐ ADAPT ☐ Other: _____

[illegible]

Comments:

Relinquished by: (Signature)	Date/Time	Received by: (Signature)	Date/Time
<i>[Signature]</i>	7-14-25 1:30	<i>[Signature]</i>	

Sante Fe Main Office
Phone: (505) 476-3441

General Information
Phone: (505) 629-6116

Online Phone Directory
<https://www.emnrd.nm.gov/ocd/contact-us>

State of New Mexico
Energy, Minerals and Natural Resources
Oil Conservation Division
1220 S. St Francis Dr.
Santa Fe, NM 87505

QUESTIONS

Action 487559

QUESTIONS

Operator: Avant Operating, LLC 6001 Deauville Blvd Midland, TX 79706	OGRID: 330396
	Action Number: 487559
	Action Type: [C-141] Remediation Closure Request C-141 (C-141-v-Closure)

QUESTIONS

Prerequisites	
Incident ID (n#)	nAPP2516177828
Incident Name	NAPP2516177828 CUTBOW WEST CTB 1 @ 0
Incident Type	Oil Release
Incident Status	Remediation Closure Report Received
Incident Facility	[fAPP2318749411] Cutbow West CTB 1

Location of Release Source	
Please answer all the questions in this group.	
Site Name	Cutbow West CTB 1
Date Release Discovered	06/06/2025
Surface Owner	Federal

Incident Details	
Please answer all the questions in this group.	
Incident Type	Oil Release
Did this release result in a fire or is the result of a fire	Yes
Did this release result in any injuries	No
Has this release reached or does it have a reasonable probability of reaching a watercourse	No
Has this release endangered or does it have a reasonable probability of endangering public health	No
Has this release substantially damaged or will it substantially damage property or the environment	No
Is this release of a volume that is or may with reasonable probability be detrimental to fresh water	No

Nature and Volume of Release	
Material(s) released, please answer all that apply below. Any calculations or specific justifications for the volumes provided should be attached to the follow-up C-141 submission.	
Crude Oil Released (bbls) Details	Cause: Equipment Failure Other (Specify) Crude Oil Released: 0 BBL Recovered: 0 BBL Lost: 0 BBL.
Produced Water Released (bbls) Details	Not answered.
Is the concentration of chloride in the produced water >10,000 mg/l	No
Condensate Released (bbls) Details	Not answered.
Natural Gas Vented (Mcf) Details	Not answered.
Natural Gas Flared (Mcf) Details	Not answered.
Other Released Details	Not answered.
Are there additional details for the questions above (i.e. any answer containing Other, Specify, Unknown, and/or Fire, or any negative lost amounts)	We had a reportable release at the Cutbow West CTB on June 6, 2025 due to loss of air supply at the facility, allowing fluid from the separator to carry over to the flare. This incident resulted in a small fire and total release of 0.4 barrels of oil onto the well pad. No injuries or damage resulted from the fire. In the coming weeks, we will evaluate the affected soils and implement the necessary remediation measures.

Sante Fe Main Office
Phone: (505) 476-3441

General Information
Phone: (505) 629-6116

Online Phone Directory
<https://www.emnrd.nm.gov/ocd/contact-us>

State of New Mexico
Energy, Minerals and Natural Resources
Oil Conservation Division
1220 S. St Francis Dr.
Santa Fe, NM 87505

QUESTIONS, Page 2

Action 487559

QUESTIONS (continued)

Operator: Avant Operating, LLC 6001 Deauville Blvd Midland, TX 79706	OGRID: 330396
	Action Number: 487559
	Action Type: [C-141] Remediation Closure Request C-141 (C-141-v-Closure)

QUESTIONS

Nature and Volume of Release (continued)	
Is this a gas only submission (i.e. only significant Mcf values reported)	More info needed to determine if this will be treated as a "gas only" report.
Was this a major release as defined by Subsection A of 19.15.29.7 NMAC	Yes
Reasons why this would be considered a submission for a notification of a major release	From paragraph A. "Major release" determine using: (2) an unauthorized release of a volume that: (a) results in a fire or is the result of a fire.
With the implementation of the 19.15.27 NMAC (05/25/2021), venting and/or flaring of natural gas (i.e. gas only) are to be submitted on the C-129 form.	

Initial Response

The responsible party must undertake the following actions immediately unless they could create a safety hazard that would result in injury.

The source of the release has been stopped	True
The impacted area has been secured to protect human health and the environment	True
Released materials have been contained via the use of berms or dikes, absorbent pads, or other containment devices	True
All free liquids and recoverable materials have been removed and managed appropriately	True
If all the actions described above have not been undertaken, explain why	Not answered.

Per Paragraph (4) of Subsection B of 19.15.29.8 NMAC the responsible party may commence remediation immediately after discovery of a release. If remediation has begun, please prepare and attach a narrative of actions to date in the follow-up C-141 submission. If remedial efforts have been successfully completed or if the release occurred within a lined containment area (see Subparagraph (a) of Paragraph (5) of Subsection A of 19.15.29.11 NMAC), please prepare and attach all information needed for closure evaluation in the follow-up C-141 submission.

I hereby certify that the information given above is true and complete to the best of my knowledge and understand that pursuant to OCD rules and regulations all operators are required to report and/or file certain release notifications and perform corrective actions for releases which may endanger public health or the environment. The acceptance of a C-141 report by the OCD does not relieve the operator of liability should their operations have failed to adequately investigate and remediate contamination that pose a threat to groundwater, surface water, human health or the environment. In addition, OCD acceptance of a C-141 report does not relieve the operator of responsibility for compliance with any other federal, state, or local laws and/or regulations.

I hereby agree and sign off to the above statement	Name: Ashton Thielke Title: EHS Specialist Email: Ashton.Thielke@coterra.com Date: 07/22/2025
--	--

Sante Fe Main Office
Phone: (505) 476-3441

General Information
Phone: (505) 629-6116

Online Phone Directory
<https://www.emnrd.nm.gov/ocd/contact-us>

State of New Mexico
Energy, Minerals and Natural Resources
Oil Conservation Division
1220 S. St Francis Dr.
Santa Fe, NM 87505

QUESTIONS, Page 3

Action 487559

QUESTIONS (continued)

Operator: Avant Operating, LLC 6001 Deauville Blvd Midland, TX 79706	OGRID:
	330396
	Action Number:
	487559
Action Type:	
[C-141] Remediation Closure Request C-141 (C-141-v-Closure)	

QUESTIONS

Site Characterization	
<i>Please answer all the questions in this group (only required when seeking remediation plan approval and beyond). This information must be provided to the appropriate district office no later than 90 days after the release discovery date.</i>	
What is the shallowest depth to groundwater beneath the area affected by the release in feet below ground surface (ft bgs)	Between 51 and 75 (ft.)
What method was used to determine the depth to ground water	NM OSE iWaters Database Search
Did this release impact groundwater or surface water	No
What is the minimum distance, between the closest lateral extents of the release and the following surface areas:	
A continuously flowing watercourse or any other significant watercourse	Between 1 and 5 (mi.)
Any lakebed, sinkhole, or playa lake (measured from the ordinary high-water mark)	Between 1 and 5 (mi.)
An occupied permanent residence, school, hospital, institution, or church	Greater than 5 (mi.)
A spring or a private domestic fresh water well used by less than five households for domestic or stock watering purposes	Greater than 5 (mi.)
Any other fresh water well or spring	Between 1 and 5 (mi.)
Incorporated municipal boundaries or a defined municipal fresh water well field	Greater than 5 (mi.)
A wetland	Between 1 and 5 (mi.)
A subsurface mine	Greater than 5 (mi.)
An (non-karst) unstable area	Greater than 5 (mi.)
Categorize the risk of this well / site being in a karst geology	Low
A 100-year floodplain	Greater than 5 (mi.)
Did the release impact areas not on an exploration, development, production, or storage site	No

Remediation Plan	
<i>Please answer all the questions that apply or are indicated. This information must be provided to the appropriate district office no later than 90 days after the release discovery date.</i>	
Requesting a remediation plan approval with this submission	Yes
<i>Attach a comprehensive report demonstrating the lateral and vertical extents of soil contamination associated with the release have been determined, pursuant to 19.15.29.11 NMAC and 19.15.29.13 NMAC.</i>	
Have the lateral and vertical extents of contamination been fully delineated	Yes
Was this release entirely contained within a lined containment area	No
Soil Contamination Sampling: (Provide the highest observable value for each, in milligrams per kilograms.)	
Chloride (EPA 300.0 or SM4500 Cl B)	288
TPH (GRO+DRO+MRO) (EPA SW-846 Method 8015M)	41.7
GRO+DRO (EPA SW-846 Method 8015M)	41.7
BTEX (EPA SW-846 Method 8021B or 8260B)	0
Benzene (EPA SW-846 Method 8021B or 8260B)	0
<i>Per Subsection B of 19.15.29.11 NMAC unless the site characterization report includes completed efforts at remediation, the report must include a proposed remediation plan in accordance with 19.15.29.12 NMAC, which includes the anticipated timelines for beginning and completing the remediation.</i>	
On what estimated date will the remediation commence	07/08/2025
On what date will (or did) the final sampling or liner inspection occur	07/08/2025
On what date will (or was) the remediation complete(d)	07/08/2025
What is the estimated surface area (in square feet) that will be reclaimed	0
What is the estimated volume (in cubic yards) that will be reclaimed	0
What is the estimated surface area (in square feet) that will be remediated	1369
What is the estimated volume (in cubic yards) that will be remediated	30
<i>These estimated dates and measurements are recognized to be the best guess or calculation at the time of submission and may (be) change(d) over time as more remediation efforts are completed.</i>	
<i>The OCD recognizes that proposed remediation measures may have to be minimally adjusted in accordance with the physical realities encountered during remediation. If the responsible party has any need to significantly deviate from the remediation plan proposed, then it should consult with the division to determine if another remediation plan submission is required.</i>	

Sante Fe Main Office
Phone: (505) 476-3441

General Information
Phone: (505) 629-6116

Online Phone Directory
<https://www.emnrd.nm.gov/ocd/contact-us>

State of New Mexico
Energy, Minerals and Natural Resources
Oil Conservation Division
1220 S. St Francis Dr.
Santa Fe, NM 87505

QUESTIONS, Page 4

Action 487559

QUESTIONS (continued)

Operator: Avant Operating, LLC 6001 Deauville Blvd Midland, TX 79706	OGRID: 330396
	Action Number: 487559
	Action Type: [C-141] Remediation Closure Request C-141 (C-141-v-Closure)

QUESTIONS

Remediation Plan (continued)	
<i>Please answer all the questions that apply or are indicated. This information must be provided to the appropriate district office no later than 90 days after the release discovery date.</i>	
This remediation will (or is expected to) utilize the following processes to remediate / reduce contaminants:	
<i>(Select all answers below that apply.)</i>	
(Ex Situ) Excavation and off-site disposal (i.e. dig and haul, hydrovac, etc.)	Yes
Which OCD approved facility will be used for off-site disposal	LEA LAND LANDFILL [fEEM0112342028]
OR which OCD approved well (API) will be used for off-site disposal	Not answered.
OR is the off-site disposal site, to be used, out-of-state	Not answered.
OR is the off-site disposal site, to be used, an NMED facility	Not answered.
(Ex Situ) Excavation and on-site remediation (i.e. On-Site Land Farms)	Not answered.
(In Situ) Soil Vapor Extraction	Not answered.
(In Situ) Chemical processing (i.e. Soil Shredding, Potassium Permanganate, etc.)	Not answered.
(In Situ) Biological processing (i.e. Microbes / Fertilizer, etc.)	Not answered.
(In Situ) Physical processing (i.e. Soil Washing, Gypsum, Disking, etc.)	Not answered.
Ground Water Abatement pursuant to 19.15.30 NMAC	Not answered.
OTHER (Non-listed remedial process)	Not answered.
<i>Per Subsection B of 19.15.29.11 NMAC unless the site characterization report includes completed efforts at remediation, the report must include a proposed remediation plan in accordance with 19.15.29.12 NMAC, which includes the anticipated timelines for beginning and completing the remediation.</i>	
I hereby certify that the information given above is true and complete to the best of my knowledge and understand that pursuant to OCD rules and regulations all operators are required to report and/or file certain release notifications and perform corrective actions for releases which may endanger public health or the environment. The acceptance of a C-141 report by the OCD does not relieve the operator of liability should their operations have failed to adequately investigate and remediate contamination that pose a threat to groundwater, surface water, human health or the environment. In addition, OCD acceptance of a C-141 report does not relieve the operator of responsibility for compliance with any other federal, state, or local laws and/or regulations.	
I hereby agree and sign off to the above statement	Name: Ashton Thielke Title: EHS Specialist Email: Ashton.Thielke@coterra.com Date: 07/22/2025
<i>The OCD recognizes that proposed remediation measures may have to be minimally adjusted in accordance with the physical realities encountered during remediation. If the responsible party has any need to significantly deviate from the remediation plan proposed, then it should consult with the division to determine if another remediation plan submission is required.</i>	

Sante Fe Main Office
Phone: (505) 476-3441

General Information
Phone: (505) 629-6116

Online Phone Directory
<https://www.emnrd.nm.gov/ocd/contact-us>

State of New Mexico
Energy, Minerals and Natural Resources
Oil Conservation Division
1220 S. St Francis Dr.
Santa Fe, NM 87505

QUESTIONS, Page 5

Action 487559

QUESTIONS (continued)

Operator: Avant Operating, LLC 6001 Deauville Blvd Midland, TX 79706	OGRID: 330396
	Action Number: 487559
	Action Type: [C-141] Remediation Closure Request C-141 (C-141-v-Closure)

QUESTIONS

Deferral Requests Only	
<i>Only answer the questions in this group if seeking a deferral upon approval this submission. Each of the following items must be confirmed as part of any request for deferral of remediation.</i>	
Requesting a deferral of the remediation closure due date with the approval of this submission	No

Sante Fe Main Office
Phone: (505) 476-3441

General Information
Phone: (505) 629-6116

Online Phone Directory
<https://www.emnrd.nm.gov/ocd/contact-us>

State of New Mexico
Energy, Minerals and Natural Resources
Oil Conservation Division
1220 S. St Francis Dr.
Santa Fe, NM 87505

QUESTIONS, Page 6

Action 487559

QUESTIONS (continued)

Operator: Avant Operating, LLC 6001 Deauville Blvd Midland, TX 79706	OGRID: 330396
	Action Number: 487559
	Action Type: [C-141] Remediation Closure Request C-141 (C-141-v-Closure)

QUESTIONS

Sampling Event Information	
Last sampling notification (C-141N) recorded	481926
Sampling date pursuant to Subparagraph (a) of Paragraph (1) of Subsection D of 19.15.29.12 NMAC	07/08/2025
What was the (estimated) number of samples that were to be gathered	14
What was the sampling surface area in square feet	1956

Remediation Closure Request	
<i>Only answer the questions in this group if seeking remediation closure for this release because all remediation steps have been completed.</i>	
Requesting a remediation closure approval with this submission	Yes
Have the lateral and vertical extents of contamination been fully delineated	Yes
Was this release entirely contained within a lined containment area	No
All areas reasonably needed for production or subsequent drilling operations have been stabilized, returned to the sites existing grade, and have a soil cover that prevents ponding of water, minimizing dust and erosion	Yes
What was the total surface area (in square feet) remediated	1369
What was the total volume (cubic yards) remediated	30
All areas not reasonably needed for production or subsequent drilling operations have been reclaimed to contain a minimum of four feet of non-waste contain earthen material with concentrations less than 600 mg/kg chlorides, 100 mg/kg TPH, 50 mg/kg BTEX, and 10 mg/kg Benzene	Yes
What was the total surface area (in square feet) reclaimed	0
What was the total volume (in cubic yards) reclaimed	0
Summarize any additional remediation activities not included by answers (above)	Area was excavated (scraped) to a depth of 0.5' to remove all discolored soil. Following the surface scrape composite confirmation floor samples and horizontal delineation samples were collected to ensure all impact was removed. The area was backfilled with clean material.
<i>The responsible party must attach information demonstrating they have complied with all applicable closure requirements and any conditions or directives of the OCD. This demonstration should be in the form of a comprehensive report (in .pdf format) including a scaled site map, sampling diagrams, relevant field notes, photographs of any excavation prior to backfilling, laboratory data including chain of custody documents of final sampling, and a narrative of the remedial activities. Refer to 19.15.29.12 NMAC.</i>	
I hereby certify that the information given above is true and complete to the best of my knowledge and understand that pursuant to OCD rules and regulations all operators are required to report and/or file certain release notifications and perform corrective actions for releases which may endanger public health or the environment. The acceptance of a C-141 report by the OCD does not relieve the operator of liability should their operations have failed to adequately investigate and remediate contamination that pose a threat to groundwater, surface water, human health or the environment. In addition, OCD acceptance of a C-141 report does not relieve the operator of responsibility for compliance with any other federal, state, or local laws and/or regulations. The responsible party acknowledges they must substantially restore, reclaim, and re-vegetate the impacted surface area to the conditions that existed prior to the release or their final land use in accordance with 19.15.29.13 NMAC including notification to the OCD when reclamation and re-vegetation are complete.	
I hereby agree and sign off to the above statement	Name: Ashton Thielke Title: EHS Specialist Email: Ashton.Thielke@coterra.com Date: 07/22/2025

Sante Fe Main Office
Phone: (505) 476-3441

General Information
Phone: (505) 629-6116

Online Phone Directory
<https://www.emnrd.nm.gov/ocd/contact-us>

State of New Mexico
Energy, Minerals and Natural Resources
Oil Conservation Division
1220 S. St Francis Dr.
Santa Fe, NM 87505

QUESTIONS, Page 7

Action 487559

QUESTIONS (continued)

Operator: Avant Operating, LLC 6001 Deauville Blvd Midland, TX 79706	OGRID: 330396
	Action Number: 487559
	Action Type: [C-141] Remediation Closure Request C-141 (C-141-v-Closure)

QUESTIONS

Reclamation Report	
Only answer the questions in this group if all reclamation steps have been completed.	
Requesting a reclamation approval with this submission	No

Sante Fe Main Office
Phone: (505) 476-3441

General Information
Phone: (505) 629-6116

Online Phone Directory
<https://www.emnrd.nm.gov/ocd/contact-us>

State of New Mexico
Energy, Minerals and Natural Resources
Oil Conservation Division
1220 S. St Francis Dr.
Santa Fe, NM 87505

CONDITIONS

Action 487559

CONDITIONS

Operator: Avant Operating, LLC 6001 Deauville Blvd Midland, TX 79706	OGRID: 330396
	Action Number: 487559
	Action Type: [C-141] Remediation Closure Request C-141 (C-141-v-Closure)

CONDITIONS

Created By	Condition	Condition Date
scott.rodgers	This Remediation Closure Report is approved. Areas reasonably needed for production or subsequent drilling operations will need to be reclaimed and revegetated as soon as they are no longer reasonably needed. A report for reclamation and revegetation will need to be submitted and approved prior to this incident receiving the final status of "Restoration Complete".	8/26/2025