



13212 N MacArthur Blvd
Oklahoma City, Oklahoma 73142
Tel. 832.374.0004
ntgenvironmental.com

August 13, 2025

Mike Bratcher
District Supervisor
Oil Conservation District
811 S. First Street
Artesia, New Mexico 88210

**Re: Incident Closure Report
BTA Oil Producers, LLC
Mesa B 4H 5H
Unit N, Section 07, Township 26S, Range 33E
Site Coordinates: 32.051480388, -103.613957053
Lea County, New Mexico
Incident ID: nAPP2521733185**

Introduction

NTG Environmental, LLC (NTGE), on behalf of BTA Oil Producers, LLC (BTA), submits this Incident Closure Report to the New Mexico Oil Conservation Division (NMOCD). This report provides documentation of liner inspection activities conducted to date in the affected areas at the Mesa B 4H 5H (Site). The Site is in Unit Letter N, Section 07, of Township 26 South and Range 33 East in Lea County, New Mexico. The GPS coordinates for the release site are 32.051480388° N Latitude and -103.613957053° W Longitude. The Site location with respect to the nearest town is shown on Figure 1 and the topography of the area is shown on Figure 2.

Background

Based on the initial C-141 submitted by BTA and obtained by the New Mexico Oil Conservation District (NMOCD), the release was discovered on August 1, 2025. The release was the result of an equipment failure (transfer pump), resulting in the release of thirteen (13) barrels (bbls) of produced water and two (2) bbls of crude oil into lined containment, of which all fifteen (15) bbls were recovered. Upon discovery the well was shut-in, and the area was secure. The liner area is shown on Figure 3.

Groundwater and Site Characterization

Based on a review of the New Mexico Office of State Engineers and USGS databases, there are no known water source within a ½-mile radius of the Site. No other receptors (playas, wetlands, waterways, lakebeds, or ordinance boundaries) are located within each specific boundary or

**Creating a Better Environment
For Oil & Gas Operations**

distance from the Site. According to the Karst Potential Map, the Site is located within a Medium Karst area. The Site characterization documentation (Points of Diversion, Karst Potential, Significant Watercourse Map, Wetlands Map, and FEMA Map) is attached to the report.

NTGE characterized the Site according to Table I, Closure Criteria for Soils Impacted by a Release, from the New Mexico Administrative Code (NMCA) Title 19, Chapter 15, Part 29, Section 12 (NMAC 19.15.29.12).

General Site Characterization and Groundwater:

Table 3.1 Closure Criteria for Soils Impacted by a Release (NMAC 19.15.29.12 & 19.15.29.13)

Regulatory Standard	Chloride	TPH (GRO+DRO+MRO)	TPH (GRO+MRO)	BTEX	Benzene
19.15.23.12 Remediation and Closure Criteria for Soils Impacted by a Release (>4 Feet)	600 mg/kg	100 mg/kg	---	50 mg/kg	10 mg/kg
Notes: --- = not defined					

Liner Inspection Activities

On August 13, 2025, NTGE conducted a liner inspection to assess the integrity and state of the tank battery's secondary containment liner. Upon inspection it was noted that the liner was intact with no visible holes or breaches, and free of any standing fluids. A photographic log documenting the condition of the liner at the time of the inspection is attached.

Closure Request

Based on the liner inspection, the Site is compliant with NMOCD's regulatory requirements, and no further actions are required at the Site. BTA formally requests closure for the Site (**nAPP2521733185**). If you have any questions regarding this report or need additional information, please contact us on (832) 374-0004.

Sincerely,

NTG Environmental



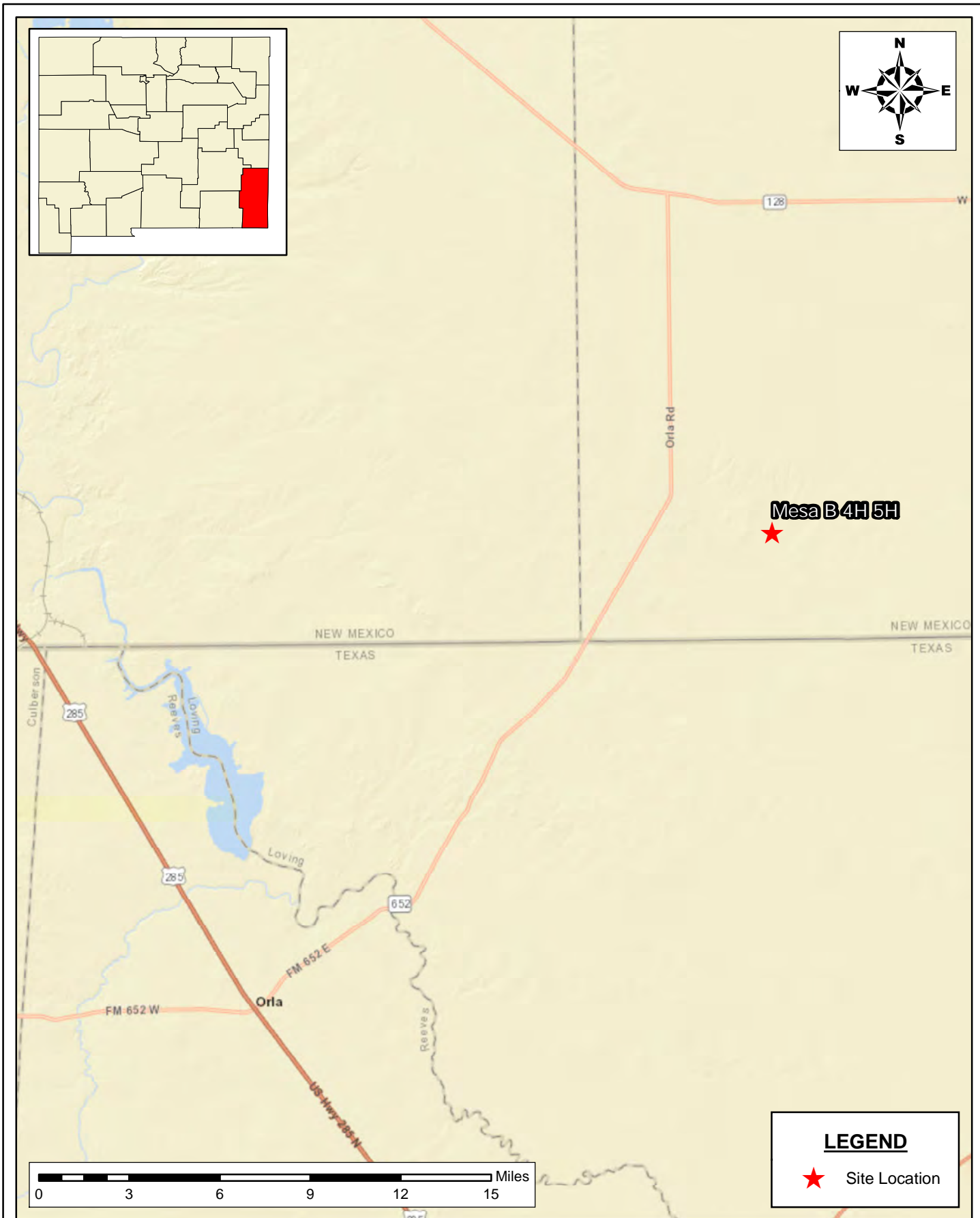
Kellan Smith
Project Manager

Attachments:

Figures
Site Characterization
Photographic Log

Figures

Document Path: C:\Users\ntg\gis\New Tech Global\NTGE - Documents\NTGE - Projects\2025 PROJECTS\BTA\RSC\2510369 - Mesa B 4H 5H\7 - Figures\GIS\Figure_1_TK.mxd



SITE LOCATION MAP
BTA OIL PRODUCERS, LLC
 MESA B 4H 5H
 LEA COUNTY, NEW MEXICO
 32.051480388, -103.613957053

SCALE: As Shown

Date: 8/13/2025

PROJECT #: 2510369



New Tech Global Environmental, LLC
 911 Regional Park Drive
 Houston, Texas 77060
 T - 281.872.9300
 F - 281.872.4521
 Web: www.ntgenviroinmental.com

NOTES:

1. Base Image: ESRI Maps & Data 2013
2. Map Projection: NAD 1983

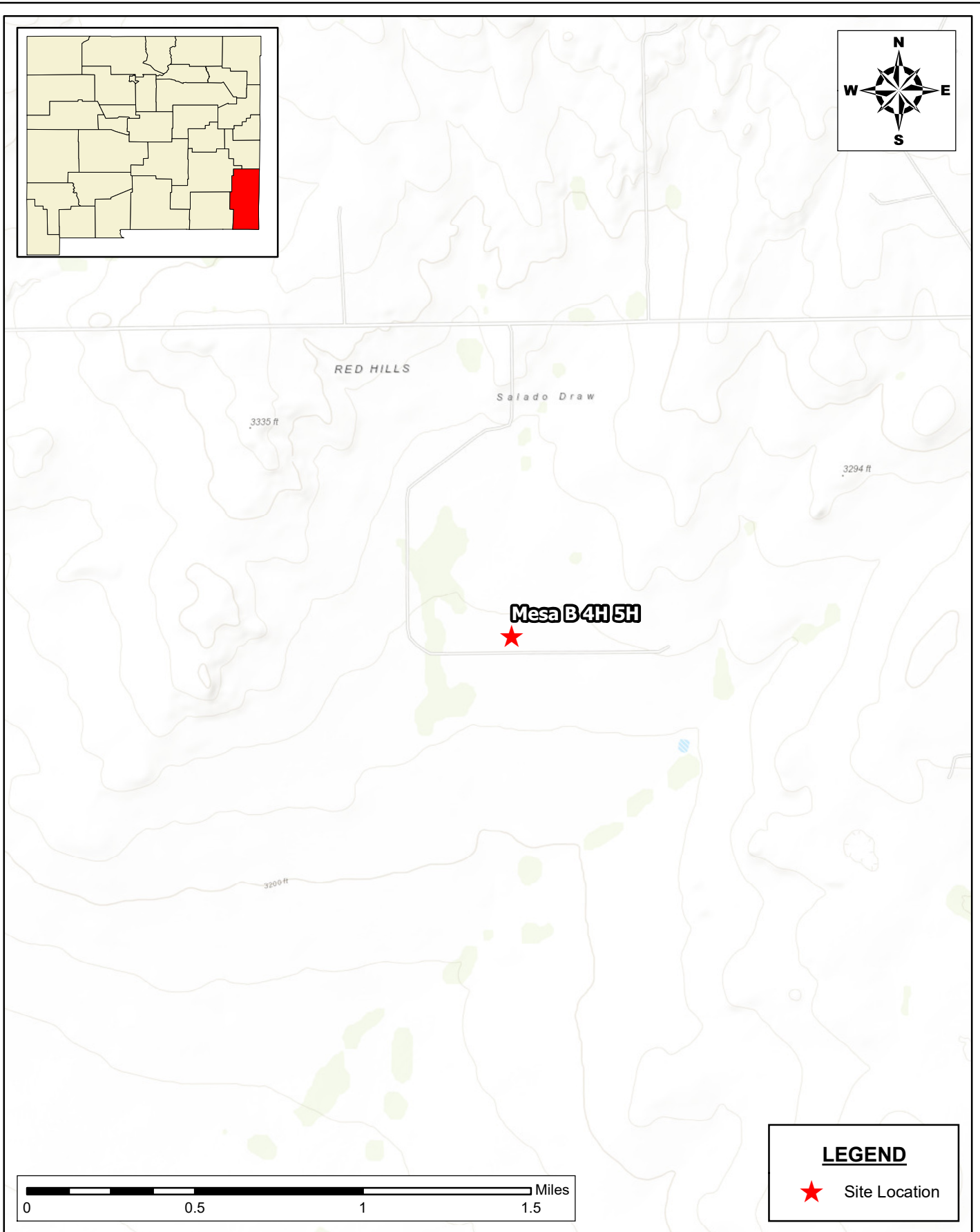
DRAWING NUMBER:

FIGURE 1

SHEET NUMBER:

1 of 1

Document Path: C:\Users\ntg\gis\New Tech Global\NTGE - Documents\NTGE - Projects\2025 PROJECTS\BTA\BTA\RSC\2510369 - Mesa B 4H 5H7 - Figures\GIS\Figure_2_TK.mxd



TOPOGRAPHIC MAP
BTA OIL PRODUCERS, LLC
MESA B 4H 5H
LEA COUNTY, NEW MEXICO
32.051480388,-103.613957053

SCALE: As Shown Date: 8/13/2025 PROJECT #: 2510369


New Tech Global Environmental, LLC
911 Regional Park Drive
Houston, Texas 77060
T - 281.872.9300
F - 281.872.4521
Web: www.ntgenviroinmental.com

NOTES:
1. Base Image: ESRI Maps & Data 2013
2. Map Projection: NAD 1983

DRAWING NUMBER:
FIGURE 2
SHEET NUMBER:
1 of 1

Document Path: C:\Users\ntg\gis\New Tech Global\NTGE - Documents\NTGE - Projects\2025 PROJECTS\BTA\RSC\2510369 - Mesa B 4H 5H7 - Figures\GIS\Figure 3 TK.mxd



VIEW OF LINER
BTA OIL PRODUCERS, LLC
MESA B 4H 5H
LEA COUNTY, NEW MEXICO
32.051480388, -103.613957053

SCALE: As Shown

Date: 8/13/2025

PROJECT #: 2510369



New Tech Global Environmental, LLC
911 Regional Park Drive
Houston, Texas 77060
T - 281.872.9300
F - 281.872.4521
Web: www.ntglobal.com

NOTES:

1. Base Image: ESRI Maps & Data 2013
2. Map Projection: NAD 1983 UTM Zone 13N

DRAWING NUMBER:

FIGURE 3

SHEET NUMBER:


1 of 1


Site Characterization


OSE POD Location Map



8/13/2025, 3:51:05 PM

 Site


 0.5 Radius


 Active

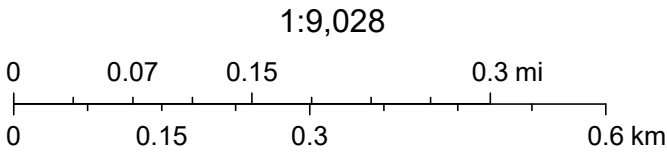
 Closure Area

GIS WATERS PODs

Water Right Regulations

 OSE District Boundary

 Lea County Parcels





Sources: Esri, TomTom, Garmin, FAO, NOAA, USGS, (c) OpenStreetMap contributors, and the GIS User Community, Maxar


OCD Well Locations & Karst Potential




8/13/2025, 3:56:54 PM

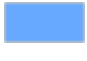
 Site


 Oil, New

 PLSS Second Division

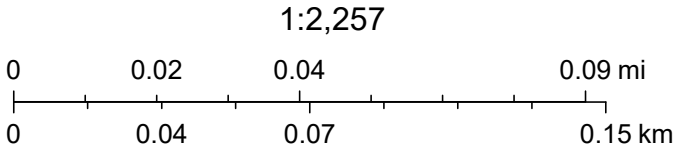
Wells - Large Scale

 Oil, Active

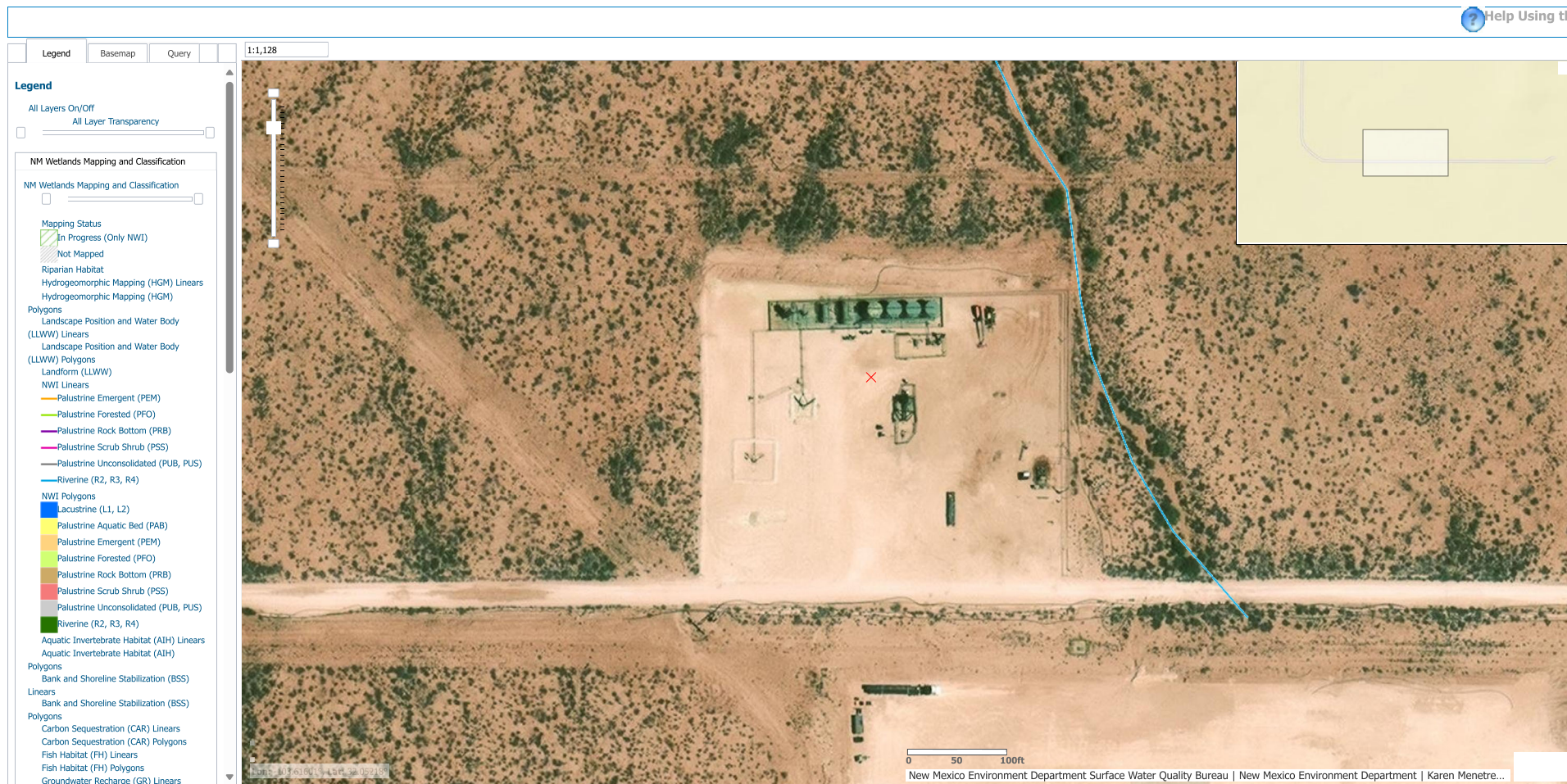
 Karst Occurrence Potential

 PLSS First Division

Medium



BLM, OCD, New Mexico Tech, Maxar, Microsoft, OCD, BLM





U.S. Fish and Wildlife Service

National Wetlands Inventory

Wetlands Map



August 13, 2025

Wetlands

- Estuarine and Marine Deepwater
- Estuarine and Marine Wetland

- Freshwater Emergent Wetland
- Freshwater Forested/Shrub Wetland
- Freshwater Pond

- Lake
- Other
- Riverine

This map is for general reference only. The US Fish and Wildlife Service is not responsible for the accuracy or currentness of the base data shown on this map. All wetlands related data should be used in accordance with the layer metadata found on the Wetlands Mapper web site.

National Flood Hazard Layer FIRMette



103°37'9"W 32°3'21"N



1:6,000

103°36'32"W 32°2'50"N

Released to Imaging: 8/26/2025 2:22:37 PM

Basemap Imagery Source: USGS National Map 2023

Legend

SEE FIS REPORT FOR DETAILED LEGEND AND INDEX MAP FOR FIRM PANEL LAYOUT

SPECIAL FLOOD HAZARD AREAS		Without Base Flood Elevation (BFE) Zone A, V, A99
		With BFE or Depth Zone AE, AO, AH, VE, AR
		Regulatory Floodway
OTHER AREAS OF FLOOD HAZARD		0.2% Annual Chance Flood Hazard, Areas of 1% annual chance flood with average depth less than one foot or with drainage areas of less than one square mile Zone X
		Future Conditions 1% Annual Chance Flood Hazard Zone X
		Area with Reduced Flood Risk due to Levee. See Notes. Zone X
		Area with Flood Risk due to Levee Zone D
OTHER AREAS		NO SCREEN Area of Minimal Flood Hazard Zone X
		Effective LOMRs
		Area of Undetermined Flood Hazard Zone D
GENERAL STRUCTURES		Channel, Culvert, or Storm Sewer
		Levee, Dike, or Floodwall
OTHER FEATURES		20.2 Cross Sections with 1% Annual Chance Water Surface Elevation
		17.5 Coastal Transect
		Base Flood Elevation Line (BFE)
		Limit of Study
		Jurisdiction Boundary
		Coastal Transect Baseline
		Profile Baseline
MAP PANELS		Digital Data Available
		No Digital Data Available
		Unmapped



The pin displayed on the map is an approximate point selected by the user and does not represent an authoritative property location.

This map complies with FEMA's standards for the use of digital flood maps if it is not void as described below. The basemap shown complies with FEMA's basemap accuracy standards

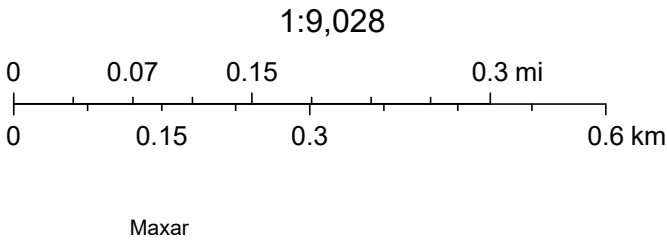
The flood hazard information is derived directly from the authoritative NFHL web services provided by FEMA. This map was exported on 8/13/2025 at 8:39 PM and does not reflect changes or amendments subsequent to this date and time. The NFHL and effective information may change or become superseded by new data over time.

This map image is void if the one or more of the following map elements do not appear: basemap imagery, flood zone labels, legend, scale bar, map creation date, community identifiers, FIRM panel number, and FIRM effective date. Map images for unmapped and unmodernized areas cannot be used for regulatory purposes.

Active Mines in New Mexico



8/13/2025, 4:08:27 PM



Photographic Log

PHOTOGRAPHIC LOG

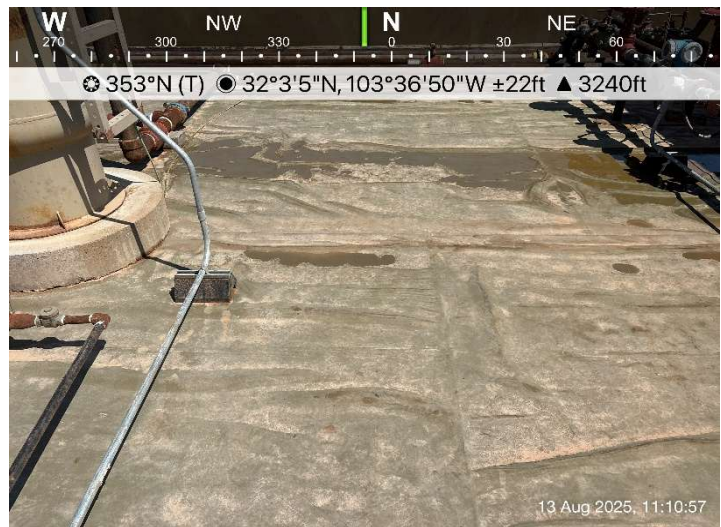
BTA Oil Producers

Photograph No. 1

Facility: Mesa B 4H 5H

County: Lea County, New Mexico

Description:
View of Liner.



Photograph No. 2

Facility: Mesa B 4H 5H

County: Lea County, New Mexico

Description:
View of Liner.

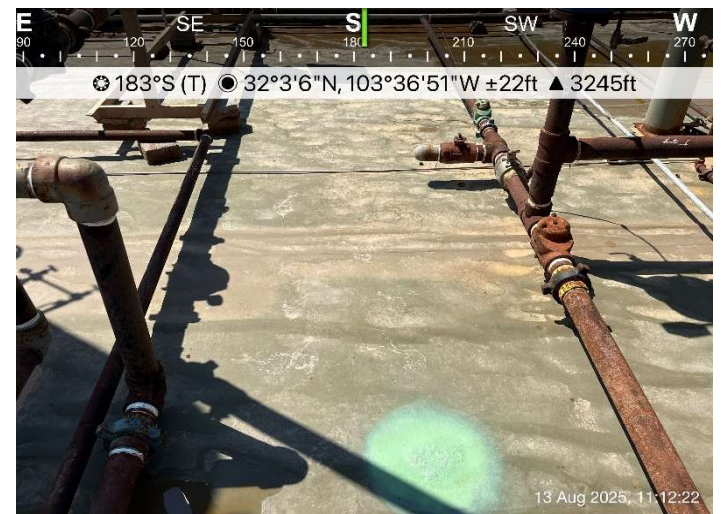


Photograph No. 3

Facility: Mesa B 4H 5H

County: Lea County, New Mexico

Description:
View of Liner.



PHOTOGRAPHIC LOG

BTA Oil Producers

Photograph No. 4

Facility: Mesa B 4H 5H

County: Lea County, New Mexico

Description:
View of Liner.



Photograph No. 5

Facility: Mesa B 4H 5H

County: Lea County, New Mexico

Description:
View of Liner.

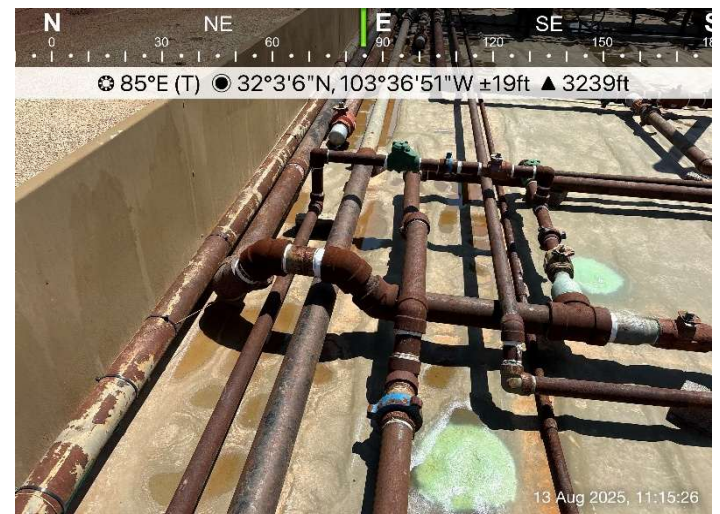


Photograph No. 6

Facility: Mesa B 4H 5H

County: Lea County, New Mexico

Description:
View of Liner.



Sante Fe Main Office
Phone: (505) 476-3441

General Information
Phone: (505) 629-6116

Online Phone Directory
<https://www.emnrd.nm.gov/ocd/contact-us>

State of New Mexico
Energy, Minerals and Natural Resources
Oil Conservation Division
1220 S. St Francis Dr.
Santa Fe, NM 87505

QUESTIONS

Action 496093

QUESTIONS

Operator: BTA OIL PRODUCERS, LLC 104 S Pecos Midland, TX 79701	OGRID: 260297
	Action Number: 496093
	Action Type: [C-141] Remediation Closure Request C-141 (C-141-v-Closure)

QUESTIONS

Prerequisites	
Incident ID (n#)	nAPP2521733185
Incident Name	NAPP2521733185 MESA B 4,5 CTB @ 0
Incident Type	Produced Water Release
Incident Status	Remediation Closure Report Received
Incident Facility	[fAPP2135650124] Mesa B 4H 5H

Location of Release Source

Please answer all the questions in this group.

Site Name	Mesa B 4,5 CTB
Date Release Discovered	08/01/2025
Surface Owner	Federal

Incident Details

Please answer all the questions in this group.

Incident Type	Produced Water Release
Did this release result in a fire or is the result of a fire	No
Did this release result in any injuries	No
Has this release reached or does it have a reasonable probability of reaching a watercourse	No
Has this release endangered or does it have a reasonable probability of endangering public health	No
Has this release substantially damaged or will it substantially damage property or the environment	No
Is this release of a volume that is or may with reasonable probability be detrimental to fresh water	No

Nature and Volume of Release

Material(s) released, please answer all that apply below. Any calculations or specific justifications for the volumes provided should be attached to the follow-up C-141 submission.

Crude Oil Released (bbls) Details	Cause: Overflow - Tank, Pit, Etc. Water Tank Crude Oil Released: 2 BBL Recovered: 2 BBL Lost: 0 BBL.
Produced Water Released (bbls) Details	Cause: Overflow - Tank, Pit, Etc. Water Tank Produced Water Released: 13 BBL Recovered: 13 BBL Lost: 0 BBL.
Is the concentration of chloride in the produced water >10,000 mg/l	Yes
Condensate Released (bbls) Details	Not answered.
Natural Gas Vented (Mcf) Details	Not answered.
Natural Gas Flared (Mcf) Details	Not answered.
Other Released Details	Not answered.
Are there additional details for the questions above (i.e. any answer containing Other, Specify, Unknown, and/or Fire, or any negative lost amounts)	Water tank #2 - transfer pump issue - 15bbls PW and O overflowed in lined containment. 15PW and O recovered.

Sante Fe Main Office
Phone: (505) 476-3441

General Information
Phone: (505) 629-6116

Online Phone Directory
<https://www.emnrd.nm.gov/ocd/contact-us>

State of New Mexico
Energy, Minerals and Natural Resources
Oil Conservation Division
1220 S. St Francis Dr.
Santa Fe, NM 87505

QUESTIONS, Page 2

Action 496093

QUESTIONS (continued)

Operator: BTA OIL PRODUCERS, LLC 104 S Pecos Midland, TX 79701	OGRID: 260297
	Action Number: 496093
	Action Type: [C-141] Remediation Closure Request C-141 (C-141-v-Closure)

QUESTIONS

Nature and Volume of Release (continued)	
Is this a gas only submission (i.e. only significant Mcf values reported)	No, according to supplied volumes this does not appear to be a "gas only" report.
Was this a major release as defined by Subsection A of 19.15.29.7 NMAC	No
Reasons why this would be considered a submission for a notification of a major release	<i>Unavailable.</i>
<i>With the implementation of the 19.15.27 NMAC (05/25/2021), venting and/or flaring of natural gas (i.e. gas only) are to be submitted on the C-129 form.</i>	

Initial Response

The responsible party must undertake the following actions immediately unless they could create a safety hazard that would result in injury.

The source of the release has been stopped	True
The impacted area has been secured to protect human health and the environment	True
Released materials have been contained via the use of berms or dikes, absorbent pads, or other containment devices	True
All free liquids and recoverable materials have been removed and managed appropriately	True
If all the actions described above have not been undertaken, explain why	<i>Not answered.</i>

Per Paragraph (4) of Subsection B of 19.15.29.8 NMAC the responsible party may commence remediation immediately after discovery of a release. If remediation has begun, please prepare and attach a narrative of actions to date in the follow-up C-141 submission. If remedial efforts have been successfully completed or if the release occurred within a lined containment area (see Subparagraph (a) of Paragraph (5) of Subsection A of 19.15.29.11 NMAC), please prepare and attach all information needed for closure evaluation in the follow-up C-141 submission.

I hereby certify that the information given above is true and complete to the best of my knowledge and understand that pursuant to OCD rules and regulations all operators are required to report and/or file certain release notifications and perform corrective actions for releases which may endanger public health or the environment. The acceptance of a C-141 report by the OCD does not relieve the operator of liability should their operations have failed to adequately investigate and remediate contamination that pose a threat to groundwater, surface water, human health or the environment. In addition, OCD acceptance of a C-141 report does not relieve the operator of responsibility for compliance with any other federal, state, or local laws and/or regulations.

I hereby agree and sign off to the above statement	Name: Susan Miller Title: Production Analyst Email: Smiller@btaoil.com Date: 08/05/2025
--	--

Sante Fe Main Office
Phone: (505) 476-3441

General Information
Phone: (505) 629-6116

Online Phone Directory
<https://www.emnrd.nm.gov/ocd/contact-us>

State of New Mexico
Energy, Minerals and Natural Resources
Oil Conservation Division
1220 S. St Francis Dr.
Santa Fe, NM 87505

QUESTIONS, Page 3

Action 496093

QUESTIONS (continued)

Operator: BTA OIL PRODUCERS, LLC 104 S Pecos Midland, TX 79701	OGRID:
	260297
	Action Number:
	496093
Action Type:	
[C-141] Remediation Closure Request C-141 (C-141-v-Closure)	

QUESTIONS

Site Characterization	
<i>Please answer all the questions in this group (only required when seeking remediation plan approval and beyond). This information must be provided to the appropriate district office no later than 90 days after the release discovery date.</i>	
What is the shallowest depth to groundwater beneath the area affected by the release in feet below ground surface (ft bgs)	Between 100 and 500 (ft.)
What method was used to determine the depth to ground water	NM OSE iWaters Database Search
Did this release impact groundwater or surface water	No
What is the minimum distance, between the closest lateral extents of the release and the following surface areas:	
A continuously flowing watercourse or any other significant watercourse	Between 100 and 200 (ft.)
Any lakebed, sinkhole, or playa lake (measured from the ordinary high-water mark)	Greater than 5 (mi.)
An occupied permanent residence, school, hospital, institution, or church	Greater than 5 (mi.)
A spring or a private domestic fresh water well used by less than five households for domestic or stock watering purposes	Greater than 5 (mi.)
Any other fresh water well or spring	Between 1 and 5 (mi.)
Incorporated municipal boundaries or a defined municipal fresh water well field	Greater than 5 (mi.)
A wetland	Between 500 and 1000 (ft.)
A subsurface mine	Greater than 5 (mi.)
An (non-karst) unstable area	Greater than 5 (mi.)
Categorize the risk of this well / site being in a karst geology	Medium
A 100-year floodplain	Greater than 5 (mi.)
Did the release impact areas not on an exploration, development, production, or storage site	No

Remediation Plan	
<i>Please answer all the questions that apply or are indicated. This information must be provided to the appropriate district office no later than 90 days after the release discovery date.</i>	
Requesting a remediation plan approval with this submission	Yes
<i>Attach a comprehensive report demonstrating the lateral and vertical extents of soil contamination associated with the release have been determined, pursuant to 19.15.29.11 NMAC and 19.15.29.13 NMAC.</i>	
Have the lateral and vertical extents of contamination been fully delineated	Yes
Was this release entirely contained within a lined containment area	Yes
<i>Per Subsection B of 19.15.29.11 NMAC unless the site characterization report includes completed efforts at remediation, the report must include a proposed remediation plan in accordance with 19.15.29.12 NMAC, which includes the anticipated timelines for beginning and completing the remediation.</i>	
On what estimated date will the remediation commence	08/08/2025
On what date will (or did) the final sampling or liner inspection occur	08/13/2025
On what date will (or was) the remediation complete(d)	08/08/2025
What is the estimated surface area (in square feet) that will be remediated	5100
What is the estimated volume (in cubic yards) that will be remediated	0
<i>These estimated dates and measurements are recognized to be the best guess or calculation at the time of submission and may (be) change(d) over time as more remediation efforts are completed.</i>	
<i>The OCD recognizes that proposed remediation measures may have to be minimally adjusted in accordance with the physical realities encountered during remediation. If the responsible party has any need to significantly deviate from the remediation plan proposed, then it should consult with the division to determine if another remediation plan submission is required.</i>	

Sante Fe Main Office
Phone: (505) 476-3441

General Information
Phone: (505) 629-6116

Online Phone Directory
<https://www.emnrd.nm.gov/ocd/contact-us>

State of New Mexico
Energy, Minerals and Natural Resources
Oil Conservation Division
1220 S. St Francis Dr.
Santa Fe, NM 87505

QUESTIONS, Page 4

Action 496093

QUESTIONS (continued)

Operator: BTA OIL PRODUCERS, LLC 104 S Pecos Midland, TX 79701	OGRID: 260297
	Action Number: 496093
	Action Type: [C-141] Remediation Closure Request C-141 (C-141-v-Closure)

QUESTIONS

Remediation Plan (continued)	
<i>Please answer all the questions that apply or are indicated. This information must be provided to the appropriate district office no later than 90 days after the release discovery date.</i>	
This remediation will (or is expected to) utilize the following processes to remediate / reduce contaminants:	
<i>(Select all answers below that apply.)</i>	
Is (or was) there affected material present needing to be removed	Yes
Is (or was) there a power wash of the lined containment area (to be) performed	Yes
OTHER (Non-listed remedial process)	Not answered.
<i>Per Subsection B of 19.15.29.11 NMAC unless the site characterization report includes completed efforts at remediation, the report must include a proposed remediation plan in accordance with 19.15.29.12 NMAC, which includes the anticipated timelines for beginning and completing the remediation.</i>	
I hereby certify that the information given above is true and complete to the best of my knowledge and understand that pursuant to OCD rules and regulations all operators are required to report and/or file certain release notifications and perform corrective actions for releases which may endanger public health or the environment. The acceptance of a C-141 report by the OCD does not relieve the operator of liability should their operations have failed to adequately investigate and remediate contamination that pose a threat to groundwater, surface water, human health or the environment. In addition, OCD acceptance of a C-141 report does not relieve the operator of responsibility for compliance with any other federal, state, or local laws and/or regulations.	
I hereby agree and sign off to the above statement	Name: Susan Miller Title: Production Analyst Email: Smiller@btaoil.com Date: 08/14/2025
<i>The OCD recognizes that proposed remediation measures may have to be minimally adjusted in accordance with the physical realities encountered during remediation. If the responsible party has any need to significantly deviate from the remediation plan proposed, then it should consult with the division to determine if another remediation plan submission is required.</i>	

Sante Fe Main Office
Phone: (505) 476-3441

General Information
Phone: (505) 629-6116

Online Phone Directory
<https://www.emnrd.nm.gov/ocd/contact-us>

State of New Mexico
Energy, Minerals and Natural Resources
Oil Conservation Division
1220 S. St Francis Dr.
Santa Fe, NM 87505

QUESTIONS, Page 6

Action 496093

QUESTIONS (continued)

Operator: BTA OIL PRODUCERS, LLC 104 S Pecos Midland, TX 79701	OGRID: 260297
	Action Number: 496093
	Action Type: [C-141] Remediation Closure Request C-141 (C-141-v-Closure)

QUESTIONS

Liner Inspection Information	
Last liner inspection notification (C-141L) recorded	494083
Liner inspection date pursuant to Subparagraph (a) of Paragraph (5) of Subsection A of 19.15.29.11 NMAC	08/13/2025
Was all the impacted materials removed from the liner	Yes
What was the liner inspection surface area in square feet	5000

Remediation Closure Request

Only answer the questions in this group if seeking remediation closure for this release because all remediation steps have been completed.

Requesting a remediation closure approval with this submission	Yes
Have the lateral and vertical extents of contamination been fully delineated	Yes
Was this release entirely contained within a lined containment area	Yes
What was the total surface area (in square feet) remediated	5100
What was the total volume (cubic yards) remediated	0
Summarize any additional remediation activities not included by answers (above)	Contaminants were removed by vac truck and liner was power washed.

The responsible party must attach information demonstrating they have complied with all applicable closure requirements and any conditions or directives of the OCD. This demonstration should be in the form of a comprehensive report (in .pdf format) including a scaled site map, sampling diagrams, relevant field notes, photographs of any excavation prior to backfilling, laboratory data including chain of custody documents of final sampling, and a narrative of the remedial activities. Refer to 19.15.29.12 NMAC.

I hereby certify that the information given above is true and complete to the best of my knowledge and understand that pursuant to OCD rules and regulations all operators are required to report and/or file certain release notifications and perform corrective actions for releases which may endanger public health or the environment. The acceptance of a C-141 report by the OCD does not relieve the operator of liability should their operations have failed to adequately investigate and remediate contamination that pose a threat to groundwater, surface water, human health or the environment. In addition, OCD acceptance of a C-141 report does not relieve the operator of responsibility for compliance with any other federal, state, or local laws and/or regulations. The responsible party acknowledges they must substantially restore, reclaim, and re-vegetate the impacted surface area to the conditions that existed prior to the release or their final land use in accordance with 19.15.29.13 NMAC including notification to the OCD when reclamation and re-vegetation are complete.

I hereby agree and sign off to the above statement	Name: Susan Miller Title: Production Analyst Email: Smiller@btaoil.com Date: 08/14/2025
--	--

Sante Fe Main Office
Phone: (505) 476-3441

General Information
Phone: (505) 629-6116

Online Phone Directory
<https://www.emnrd.nm.gov/ocd/contact-us>

State of New Mexico
Energy, Minerals and Natural Resources
Oil Conservation Division
1220 S. St Francis Dr.
Santa Fe, NM 87505

CONDITIONS

Action 496093

CONDITIONS

Operator: BTA OIL PRODUCERS, LLC 104 S Pecos Midland, TX 79701	OGRID: 260297
	Action Number: 496093
	Action Type: [C-141] Remediation Closure Request C-141 (C-141-v-Closure)

CONDITIONS

Created By	Condition	Condition Date
nvelez	Liner inspection approved, release resolved. Restoration complete.	8/26/2025