

<b>Spill Volume(Bbls) Calculator</b>		
<i>Inputs in blue, Outputs in red</i>		
Length(Ft)	Width(Ft)	Depth(In)
<u>97.000</u>	<u>50.000</u>	<u>2.000</u>
Cubic Feet Impacted		<u>808.333</u>
Barrels		<u>143.96</u>
Soil Type		Lined Containment
Bbls Assuming 100% Saturation		<u>143.96</u>
Saturation	Fluid present with shovel/backhoe	
Estimated Barrels Released		144.00000

<b>Instructions</b>
1. Input spill measurements below. Length and width need to be input in feet and depth in inches.
2. Select a soil type from the drop down menu.
3. Select a saturation level from the drop down menu.
(For data gathering instructions see appendix tab)

<b>Measurements</b>	
Length (ft)	97
Width (ft)	50
Depth (in)	2.000











WAUKEE 36 ST COM CTB

Incident ID nAPP2526128734

PREPARED BY:  
PIMA ENVIRONMENTAL SERVICES, LLC

PREPARED FOR:  
Spur Energy

## Liner Inspection and Closure Report

October 14, 2025

FACILITY NAME	WAUKEE 36 ST COM CTB
DATE OF RELEASE	9/5/2025
INCIDENT NO.	nAPP2526128734



Pima Environmental Services  
5614 N. Lovington Highway  
Hobbs, NM 88240  
575-964-7740

<b>Site Characterization</b>	
DTGW What is the shallowest DTGW beneath the area affected by the release in ft below ground surface (ft bgs)	Between 100 and 500 ft.
GW Depth Determination What method was used to determine the DTGW?	NM OSE iWaters Database Search
Ground or Surface Water Impacted Did this release impact GW or Surface Water?	No
<b>What is the min. distance between the closest lateral extents of the release and the following surace areas?</b>	
Distance to Watercourse A continuously flowing watercourse or any other significant watercourse?	> 5 mi.
Distance to Lakebed Any lakebed, sinkhole, or playa lake (measured from the ordinary high-water mark)?	> 5 mi.
Distance to Public An occupied permanent residence, school, hospital, institution, or church?	Between 1 mi. and 5 mi.
Distance to Private A spring or a private domestic FW well used by less than five households for domestic or stock watering purposes?	Between 1 mi. and 5 mi.
Distance to Fresh Water Any other FW well spring?	Between 1 mi. and 5 mi.
Within Municipal Boundaries Incorporated municipal boundaries or a defined municipal FW well field?	Between 1 mi. and 5 mi.
Distance to Wetland A wetland?	Between 500 ft and 1/2 mi.
Overlying Subsurface Mine A subsurface mine?	> 5 mi.
Overlying (Non-Karst) Unstable Area An (non-karst) unstable area?	> 5 mi.
Risk of Karst Geology Categorize the risk of this well/site being in a karst geology?	Medium
Distance to or Within 100 yr Floodplain A 100-year floodplain?	Between 1 mi. and 5 mi.
Areas NOT Other Site Did the release impact areas not on exploration, development, production, or storage site?	No
<b>Remediation Plan</b>	
Have the lateral and vertical extents of contamination been fully delineated?	Yes
Lined Containment Area Only Was this release entirely contained within a lined containment area?	Yes
<b>Soil Containment Sampling</b>	(EPA 300.00 or SM4500 Cl B?)
Chloride Constituent Chloride (mg/kg)	0
	(EPA SW-846 Method 8015M)?
TPH (GRO+DRO+MRO) Constituent TPH (mg/kg)	0
	(EPA SW-846 Method 8015M)?
GRO + DRO Constituent GRO-DRO (mg/kg)	0
	(EPA SW-846 Method 8021B or 8260B)?
BTEX Constituent BTEX (mg/kg)	0
	(EPA SW-846 Method 8021B or 8260B)?
Benzene Constituent Benzene (mg/kg)	0
Per Subsection B of 19.15.29.11 NMAC unless the site characterization report includes competed efforts at remediation, the report must include a proposed remediation plan in accordance with 19.15.29 NMAC, which includes the anticipated timelines for beginning and completing the remediation.	
Start of Remediation On what estimated date will remediation commence?	10/3/2025
Start of Sampling or Liner Inspection On what date will (or did) the final sampling or liner inspection occur?	10/3/2025
Finish of Remediation On what date will (or was) the remediation complete(d)?	10/3/2025
Surface Area (sq ft) To Be Reclaimed What is the estmated surface area (in sq ft) that will be reclaimed?	0
Surface Area (sq ft) To Be Remediated What is the estimated surface are (in sq ft) that will be remediated?	0
Volume (cu yd) To Be Remediated What is the estimated volume (in cubic yds) that will be remediated?	0
<b>Remediation Plan (Cont.) Please answer all that apply</b>	
Ex Situ Excavation Off-Site (Ex Situ) Excavation and off-site disposal (i.e. dig and haul, hydrovac, etc)?	Yes
Ex Situ Excavation On-Site (Ex Situ) Excavation and on-site remediation (i.e. On-Site Land Farms)?	No
In Situ Soil Vapor Extraction (SVE)?	No
In Situ Chemical Processing (In Situ) Chemical processing (i.e. Soil Shredding, Potassium Permanganate, etc.)?	No
In Situ Biological Processing (In Situ) Biological processing (i.e. Microbes/Fertilizer, etc.)?	No
In Situ Physical Processing (In Situ) Physical processing (i.e. Soil Washing, Gypsum, Disking, etc.)?	No
In Situ Ground Water Abatement GW Abatement pursuant to 19.15.30 NMAC?	No
Remediation Other Other (Non-listed remedial process)?	No
<b>Deferral Request Only</b>	
Requesting a deferral of the remediation closure due date with the approval of this submission	No

FACILITY NAME	WAUKEE 36 ST COM CTB
DATE OF RELEASE	9/5/2025
INCIDENT NO.	nAPP2526128734



Pima Environmental Services  
5614 N. Lovington Highway  
Hobbs, NM 88240  
575-964-7740

Requesting a remediation closure approval with this submission?	Yes
Have the lateral and vertical extents of contamination been fully delineated?	Yes
Was this release entirely contained within a lined containment area?	Yes
<b>Restored Areas For Production Use</b> All areas reasonably needed for production or subsequent drilling operations have been stabilized, returned to the sites existing grade, and have a soil cover that prevents ponding of water, minimizing dust and erosion?	Yes
<b>Total Surface Area (sq ft) Remediated</b> What was the total surface area (sq ft) remediated?	3,750
<b>Total Volume (cu yd) Remediated</b> What was the total volume (cubic yards) remediated?	0
<b>Reclaimed to Condition Prior Release</b> All areas not reasonably needed for production or subsequent drilling operations have been reclaimed to contain a minimum of four ft of non-waste contain earthen material with concentrations less than 600 mg/kg chlorides, 100 mg/kg TPH, 50 mg/kg BTEX and 10 mg/kg Benzene?	Yes
<b>Total Surface Area (sq ft) Reclaimed</b> What was the total surface area (in sq ft) reclaimed?	0
<b>Remediation Summary</b> Summarize any additional remedial activities not included by answers (above).	The lined containment was power-washed, and all standing fluids were recovered using a vacuum truck. Following remediation, a liner inspection was conducted, confirming that the containment liner maintained its integrity.



**Pima Environmental Services**  
**5614 N. Lovington Highway**  
**Hobbs, NM 88240**  
**575-964-7740**

October 14, 2025

NMOCD District 2  
811 S. First St  
Artesia, NM, 88210

**RE: Liner Inspection and Closure Report**  
**Waukee 36 St Com CTB**  
**API No. N/A**  
**GPS: Latitude 32.78908 Longitude -104.22127**  
**UL- L, Section 31, Township 17S, Range 28E**  
**NMOCD Reference No. nAPP2526128734**

Spur Energy Partners (Spur) has contracted Pima Environmental Services, LLC (Pima) to perform a liner inspection and prepare this closure report for the release of produced water and crude oil that occurred at the Waukee 36 St Com CTB (Waukee). An initial C-141 was submitted on September 18, 2025. This incident was assigned Incident ID nAPP2526128734, by the New Mexico Oil Conservation Division (NMOCD).

#### **Site Information and Site Characterization**

Waukee is located approximately 4.60 miles southeast of Riverside, NM. This spill site is in Unit L, Section 31, Township 17S, Range 28E, Latitude 32.78908 Longitude -104.22127, Eddy County, NM. A Location Map can be found in Figure 1.

According to well water records from the New Mexico Office of the State Engineer (OSE), the nearest groundwater in this vicinity is encountered at a depth of approximately 160 feet below ground surface (BGS), located 2.02 miles from the Waukee. In comparison, United States Geological Survey (USGS) data indicate a groundwater depth of about 99 feet BGS at a location roughly 2.56 miles from the site, based on measurements last recorded in 2015. Detailed references to these surveys, along with precise well locations, are provided in Appendix A, which includes supporting maps. The Waukee site is situated within an area classified as having medium karst potential, as shown in Figure 3. Additionally, a topographic overview of the area is provided in Figure 2.

#### **Release Information**

**nAPP2526128734:** On September 5, 2025, a PLC failure caused a tank overflow, releasing approximately 4 barrels of crude oil and 140 barrels of produced water into the lined secondary containment. Spur personnel promptly responded and deployed a vacuum truck, successfully recovering the entire released volume. All fluids were fully contained within the engineered secondary containment, with no impacts beyond the lined area. A site map is provided in Figure 4 for reference.

#### **Site Assessment and Liner Inspection**

On September 30, 2025, Spur personnel submitted a notification for a liner inspection, adhering to the necessary 48-hour notice period. The details of the 48-hour notification can be referenced in Appendix C.

On October 3, 2025, Pima Environmental conducted a thorough inspection of the lined containment area. The evaluation process included cleaning the liner with a power washer and using a vacuum truck to ensure the complete removal of any residual fluids. The inspection confirmed that the system remained intact and successfully retained all fluids. As a result, the liner was deemed functional, preventing any further environmental impact. A detailed report, including photographic evidence, is provided in Appendices C and D.

**Closure Request**

After careful review, Pima requests that this incident nAPP2526128734 be closed. Spur has complied with the applicable closure requirements.

For questions or additional information, please feel free to contact:

Spur Energy – Katherine Purvis at 575-441-8619 or [katherine.purvis@spurenergy.com](mailto:katherine.purvis@spurenergy.com)

Pima Environmental Services – Sebastian Orozco at 619-721-4813 or [Sebastian@pimaoil.com](mailto:Sebastian@pimaoil.com).

**Attachments**

Figures:

- 1- Location Map
- 2- Topographic Map
- 3- Karst Map
- 4- Site Map

Appendices:

Appendix A- Referenced Water Surveys

Appendix B- Soil Survey, Geological Data, FEMA Flood Map, Wetland Map

Appendix C-48 Hour Notification and Liner Inspection Form

Appendix D- Photographic Documentation

## Figures:

Figure 1- Location Map

Figure 2- Topographic Map

Figure 3- Karst Map



Figure 4- Site Map

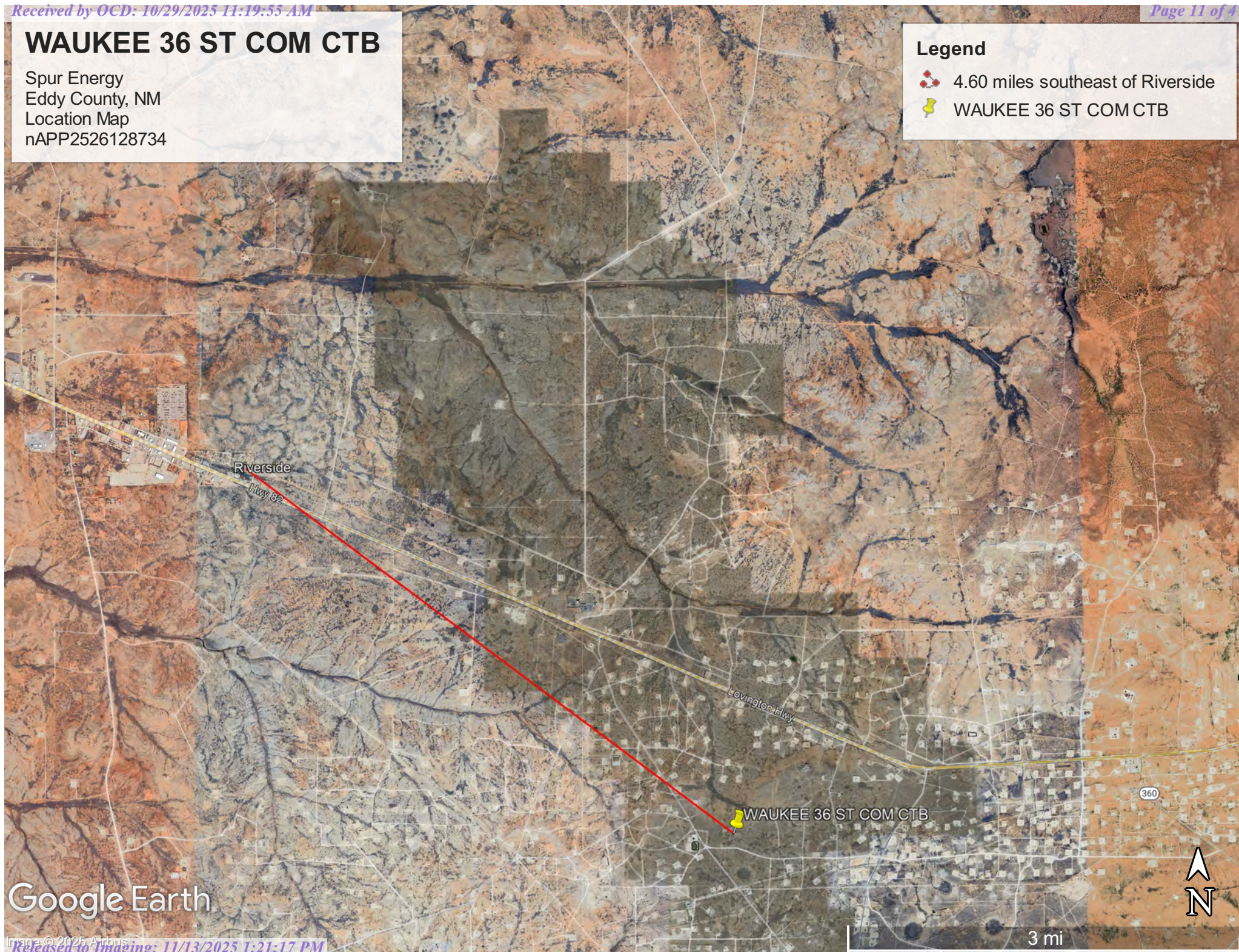


# WAUKEE 36 ST COM CTB

Spur Energy  
Eddy County, NM  
Location Map  
nAPP2526128734

## Legend

-  4.60 miles southeast of Riverside
-  WAUKEE 36 ST COM CTB




Google Earth

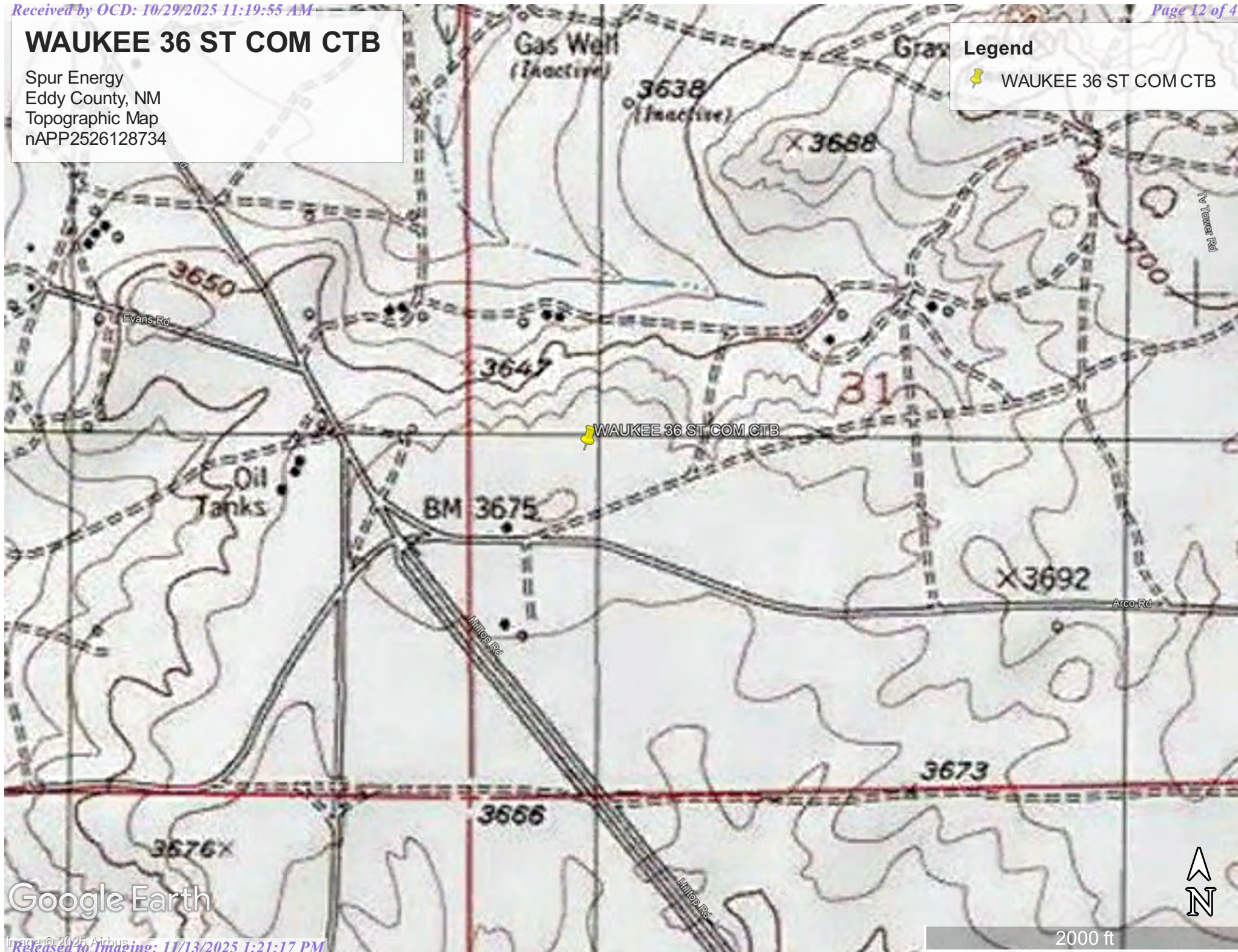


# WAUKEE 36 ST COM CTB

Spur Energy  
Eddy County, NM  
Topographic Map  
nAPP2526128734

## Legend

 WAUKEE 36 ST COM CTB



Google Earth

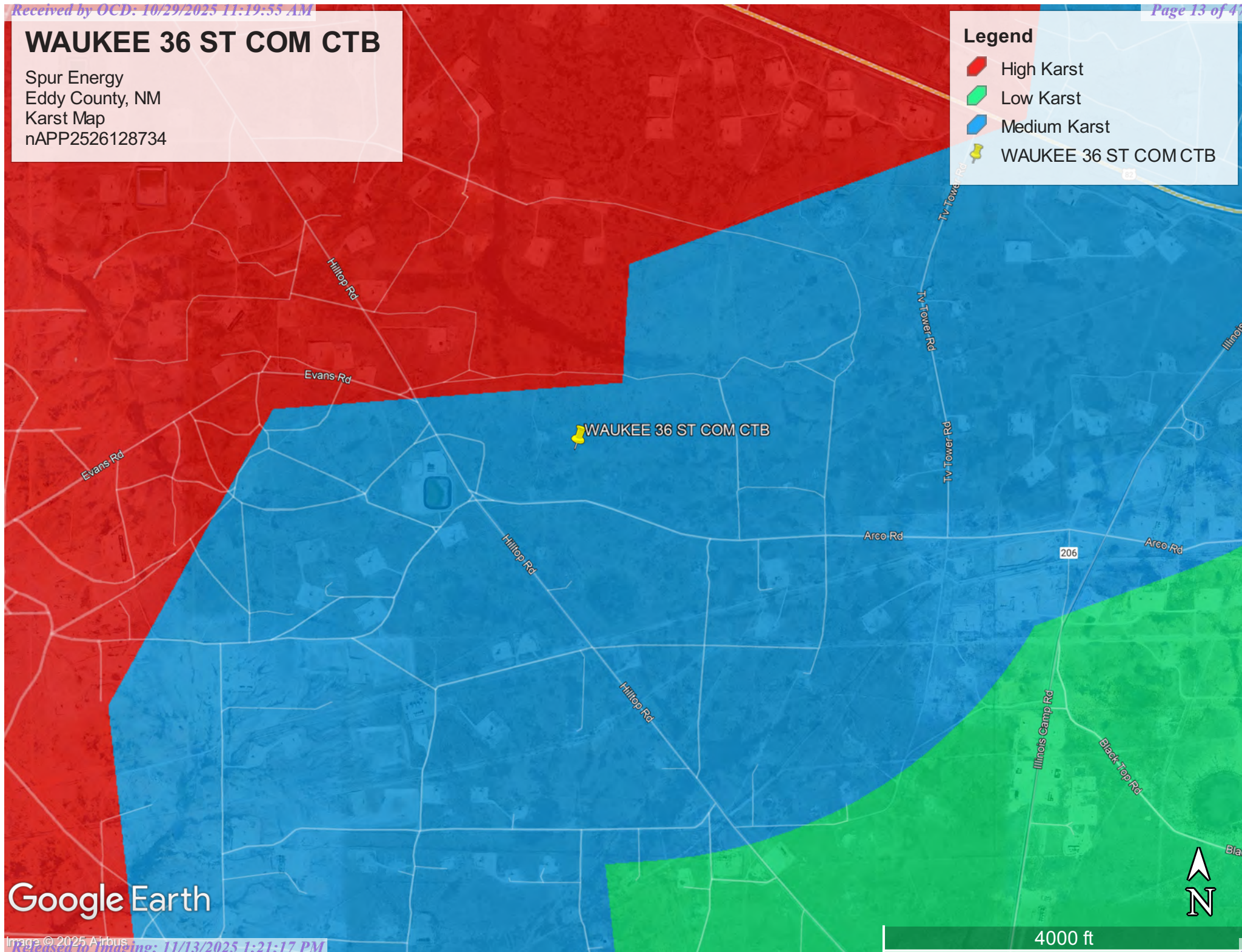


# WAUKEE 36 ST COM CTB

Spur Energy  
Eddy County, NM  
Karst Map  
nAPP2526128734

## Legend

- High Karst
- Low Karst
- Medium Karst
- WAUKEE 36 ST COM CTB







# WAUKEE 36 ST COM CTB

Spur Energy  
Eddy County, NM  
Site Map  
nAPP2526128734

## Legend

-  Liner Inspection Area
-  Waukee 36 St Com CTB



Waukee 36 St Com CTB





## Appendix A


### Water Surveys:

- OSE
- USGS
- Surface Water Map

# Point of Diversion Summary

quarters are 1=NW 2=NE 3=SW 4=SE  
quarters are smallest to largest

NAD83 UTM in meters

Well Tag	POD Nbr	Q64	Q16	Q4	Sec	Tws	Rng	X	Y	Map
NA	RA 13331 POD1	SW	SW	NW	12	18S	27E	571316.0	3625337.2	

\* UTM location was derived from PLSS - see Help

Driller License:	1664	Driller Company:	CASCADE DRILLING, LP
Driller Name:	SHAWN CAIN		
Drill Start Date:	2023-10-08	Drill Finish Date:	2023-10-10
Log File Date:	2024-08-05	PCW Rcv Date:	
Pump Type:		Pipe Discharge Size:	
Casing Size:		Depth Well:	160
		Depth Water:	




The data is furnished by the NMOSE/ISC and is accepted by the recipient with the expressed understanding that the OSE/ISC make no warranties, expressed or implied, concerning the accuracy, completeness, reliability, usability, or suitability for any particular purpose of the data.

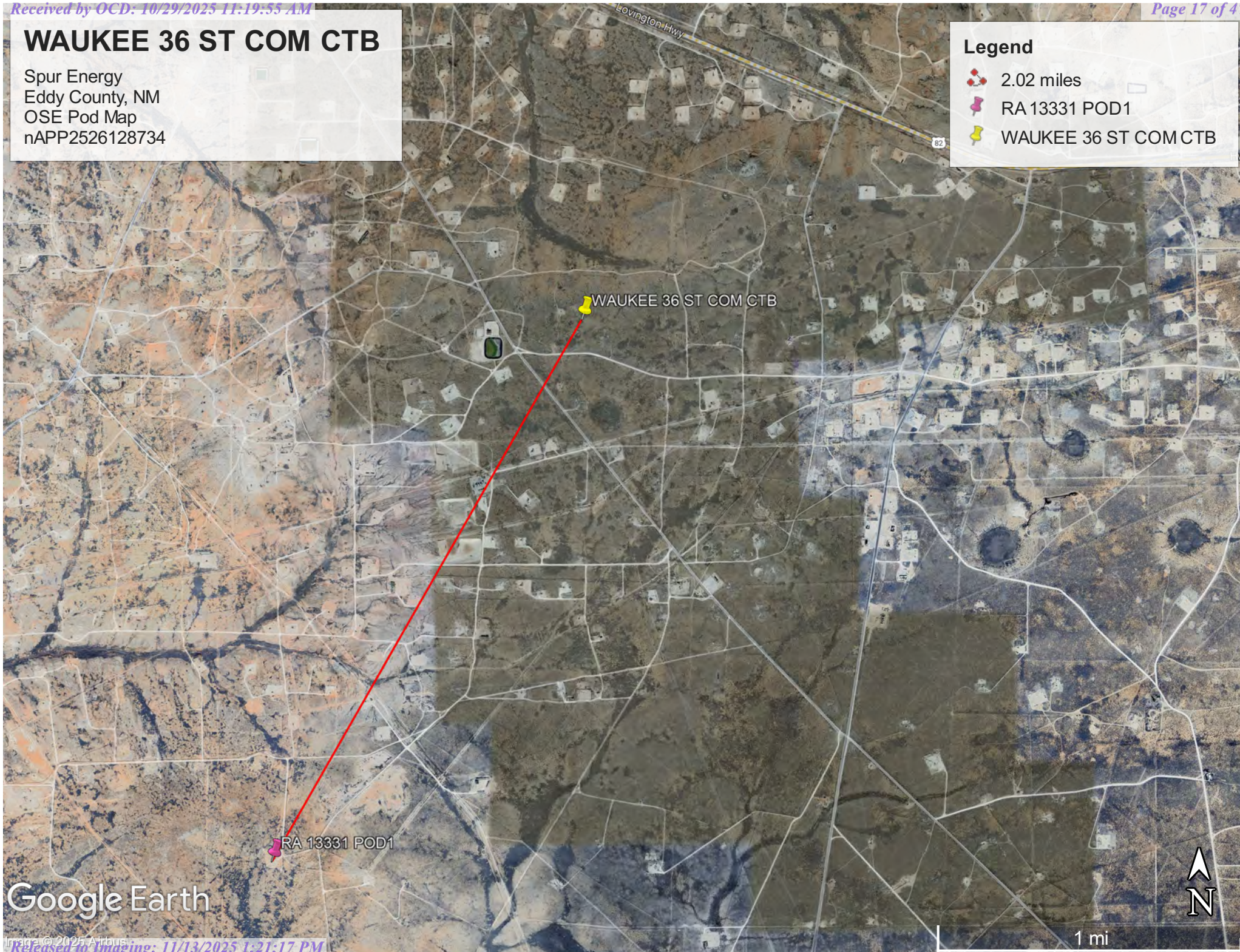


# WAUKEE 36 ST COM CTB

Spur Energy  
Eddy County, NM  
OSE Pod Map  
nAPP2526128734

## Legend

-  2.02 miles
-  RA 13331 POD1
-  WAUKEE 36 ST COM CTB



Google Earth





[USGS Home](#)  
[Contact USGS](#)  
[Search USGS](#)

## National Water Information System: Web Interface

USGS Water Resources

Data Category:

Groundwater

Geographic Area:

United States

GO

Click to hide News Bulletins

- Explore the *NEW* [USGS National Water Dashboard](#) interactive map to access real-time water data from over 13,500 stations nationwide.

Groundwater levels for the Nation



Important: [Next Generation Monitoring Location Page](#)

### Search Results -- 1 sites found

site\_no list =

- 324523104121701

Minimum number of levels = 1

[Save file of selected sites](#) to local disk for future upload

### USGS 324523104121701 18S.28E.17.111211

Available data for this site

Groundwater: Field measurements

GO

Eddy County, New Mexico

Hydrologic Unit Code 13060011

Latitude 32°45'16.4", Longitude 104°12'17.7" NAD83

Land-surface elevation 3,601 feet above NAVD88

This well is completed in the Other aquifers (N9999OTHER) national aquifer.

This well is completed in the Artesia Group (313ARTS) local aquifer.

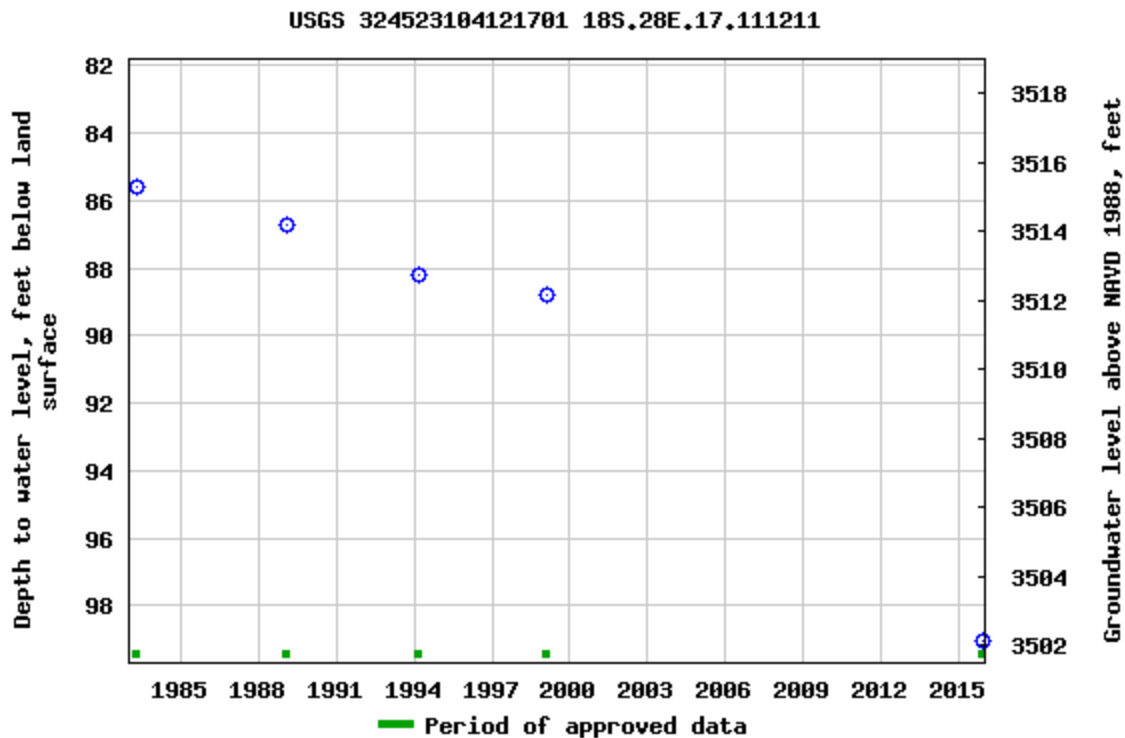
#### Output formats

[Table of data](#)

[Tab-separated data](#)

[Graph of data](#)

[Reselect period](#)



Breaks in the plot represent a gap of at least one year between field measurements.

[Download a presentation-quality graph](#)

[Questions or Comments](#)

[Help](#)

[Data Tips](#)

[Explanation of terms](#)

[Subscribe for system changes](#)

[Accessibility](#) [FOIA](#) [Privacy](#) [Policies and Notices](#)

[U.S. Department of the Interior](#) | [U.S. Geological Survey](#)

**Title: Groundwater for USA: Water Levels**

**URL: <https://nwis.waterdata.usgs.gov/nwis/gwlevels?>**



Page Contact Information: [USGS Water Data Support Team](#)

Page Last Modified: 2025-09-19 10:21:21 EDT




0.7 0.54 nadww01

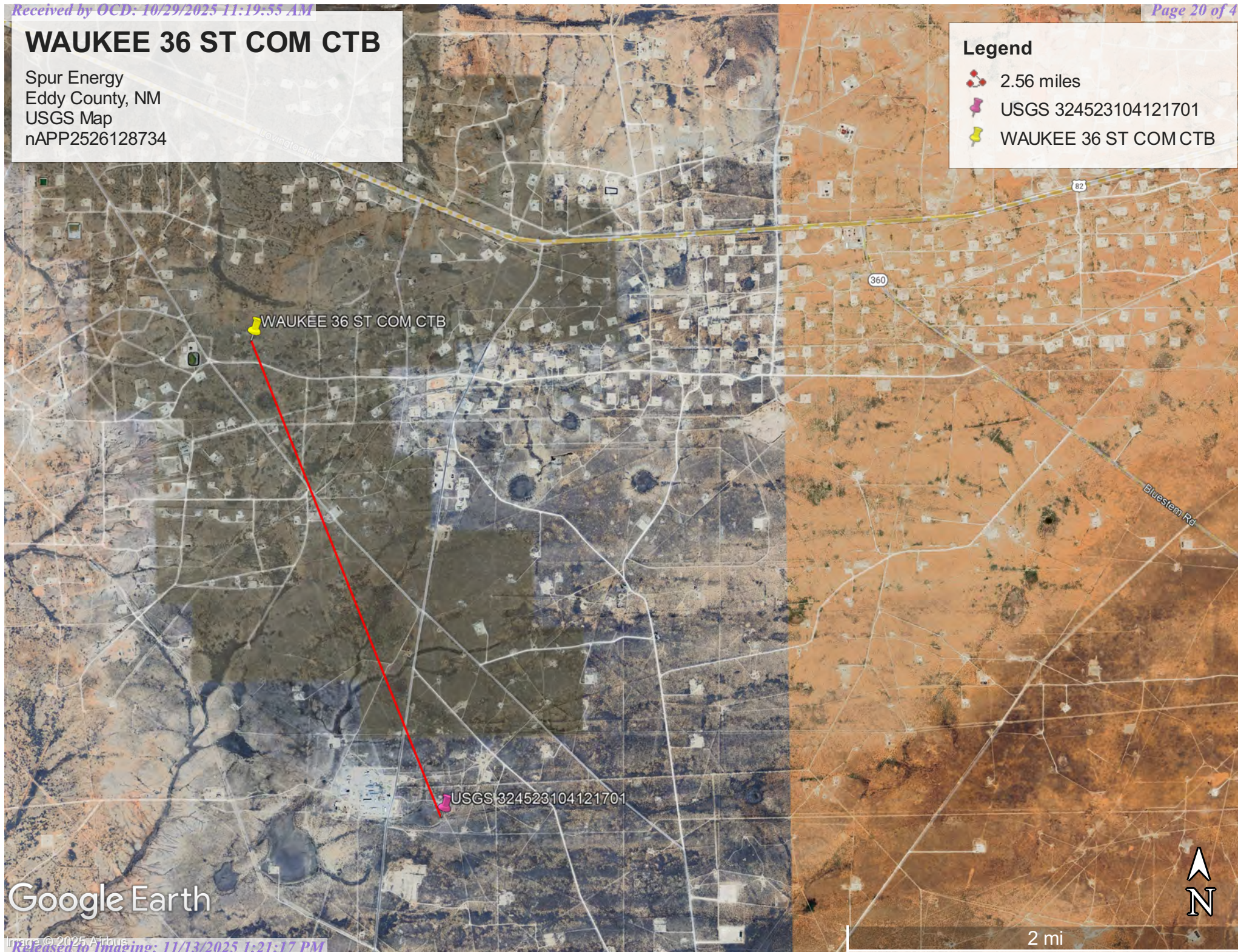


# WAUKEE 36 ST COM CTB

Spur Energy  
Eddy County, NM  
USGS Map  
nAPP2526128734

## Legend

-  2.56 miles
-  USGS 324523104121701
-  WAUKEE 36 ST COM CTB




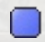

Google Earth

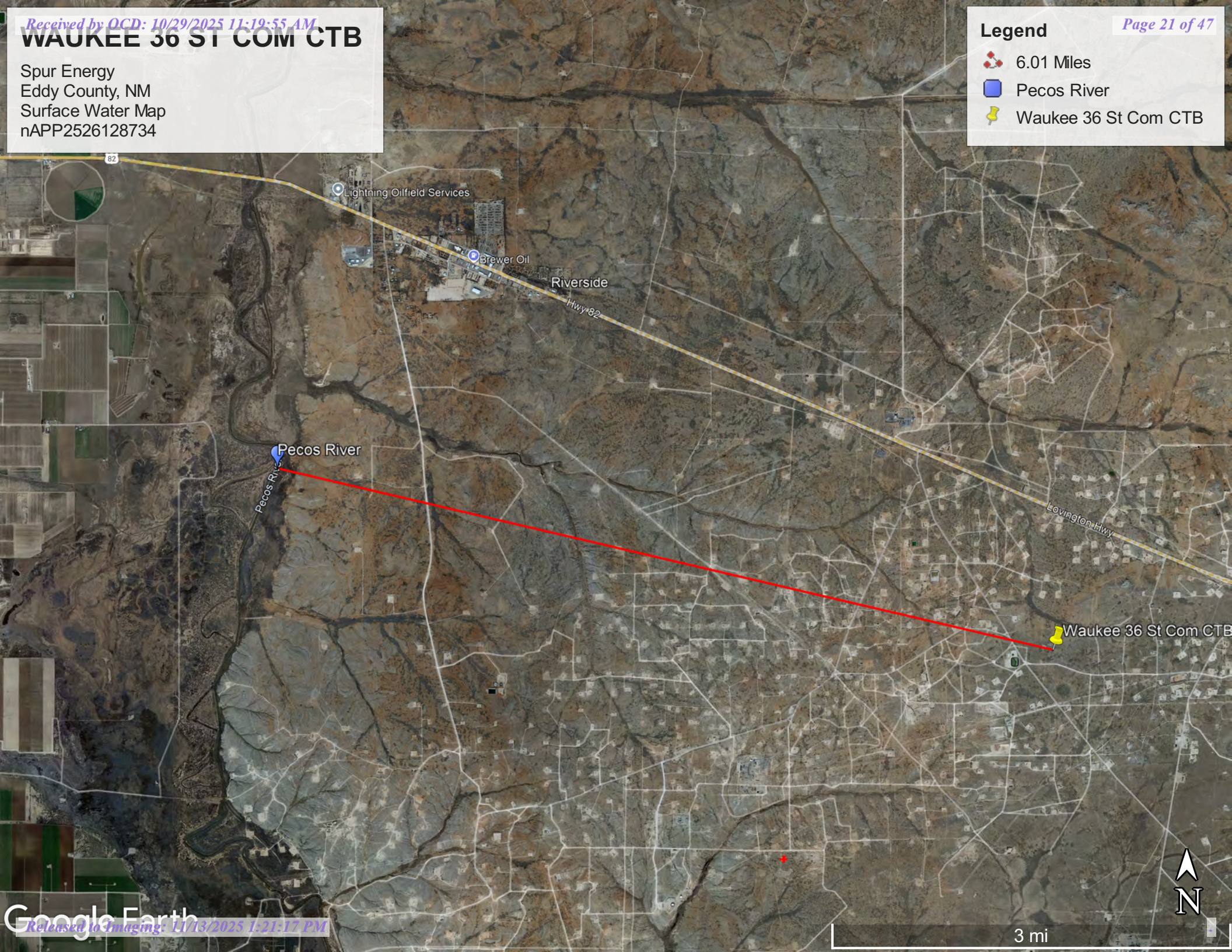


# WAUKEE 36 ST COM CTB

Spur Energy  
Eddy County, NM  
Surface Water Map  
nAPP2526128734

## Legend

-  6.01 Miles
-  Pecos River
-  Waukee 36 St Com CTB





## Appendix B

- Soil Survey & Soil Maps
- Geological Data
- FEMA Flood Map
- Wetlands Map

Map Unit Description: Kimbrough-Stegall loams, 0 to 3 percent slopes---Eddy Area, New Mexico

---

## Eddy Area, New Mexico

### KT—Kimbrough-Stegall loams, 0 to 3 percent slopes

#### Map Unit Setting

*National map unit symbol:* 1w4t

*Elevation:* 2,750 to 5,000 feet

*Mean annual precipitation:* 8 to 16 inches

*Mean annual air temperature:* 57 to 70 degrees F

*Frost-free period:* 180 to 230 days

*Farmland classification:* Not prime farmland

#### Map Unit Composition

*Kimbrough and similar soils:* 70 percent

*Stegall and similar soils:* 25 percent

*Minor components:* 5 percent

*Estimates are based on observations, descriptions, and transects of the mapunit.*

#### Description of Kimbrough

##### Setting

*Landform:* Alluvial fans, plains

*Landform position (three-dimensional):* Rise, tal

*Down-slope shape:* Linear, convex

*Across-slope shape:* Linear

*Parent material:* Mixed alluvium and/or eolian sands

##### Typical profile

*H1 - 0 to 3 inches:* loam

*H2 - 3 to 9 inches:* loam

*H3 - 9 to 60 inches:* indurated

##### Properties and qualities

*Slope:* 0 to 3 percent

*Depth to restrictive feature:* 8 to 20 inches to petrocalcic

*Drainage class:* Well drained

*Runoff class:* Very high

*Capacity of the most limiting layer to transmit water (Ksat):* Very low to moderately low (0.00 to 0.06 in/hr)

*Depth to water table:* More than 80 inches

*Frequency of flooding:* None

*Frequency of ponding:* None

*Calcium carbonate, maximum content:* 15 percent

*Maximum salinity:* Nonsaline to very slightly saline (0.0 to 2.0 mmhos/cm)

*Sodium adsorption ratio, maximum:* 1.0

*Available water supply, 0 to 60 inches:* Very low (about 1.3 inches)

##### Interpretive groups

*Land capability classification (irrigated):* None specified

*Land capability classification (nonirrigated):* 7s

Map Unit Description: Kimbrough-Stegall loams, 0 to 3 percent slopes---Eddy Area, New Mexico

---

*Hydrologic Soil Group:* D  
*Ecological site:* R070BC025NM - Shallow  
*Hydric soil rating:* No

### Description of Stegall

#### Setting

*Landform:* Plains, alluvial fans  
*Landform position (three-dimensional):* Rise  
*Down-slope shape:* Convex, linear  
*Across-slope shape:* Linear  
*Parent material:* Mixed alluvium and/or eolian sands

#### Typical profile

*H1 - 0 to 5 inches:* loam  
*H2 - 5 to 28 inches:* clay loam  
*H3 - 28 to 32 inches:* indurated  
*H4 - 32 to 60 inches:* variable

#### Properties and qualities

*Slope:* 0 to 3 percent  
*Depth to restrictive feature:* 20 to 40 inches to petrocalcic  
*Drainage class:* Well drained  
*Runoff class:* Medium  
*Capacity of the most limiting layer to transmit water (Ksat):* Low to moderately high (0.01 to 0.60 in/hr)  
*Depth to water table:* More than 80 inches  
*Frequency of flooding:* None  
*Frequency of ponding:* None  
*Calcium carbonate, maximum content:* 90 percent  
*Maximum salinity:* Nonsaline to slightly saline (0.0 to 4.0 mmhos/cm)  
*Sodium adsorption ratio, maximum:* 1.0  
*Available water supply, 0 to 60 inches:* Low (about 4.8 inches)

#### Interpretive groups

*Land capability classification (irrigated):* 3e  
*Land capability classification (nonirrigated):* 3e  
*Hydrologic Soil Group:* C  
*Ecological site:* R070BC007NM - Loamy  
*Hydric soil rating:* No

### Minor Components

#### Simona

*Percent of map unit:* 5 percent  
*Ecological site:* R070BD002NM - Shallow Sandy  
*Hydric soil rating:* No

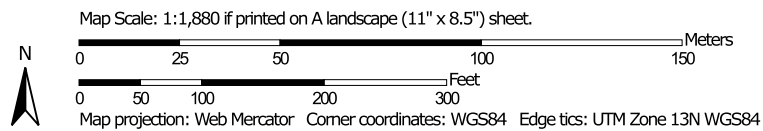
## Data Source Information

Soil Survey Area: Eddy Area, New Mexico  
Survey Area Data: Version 20, Sep 3, 2024

Soil Map—Eddy Area, New Mexico



Soil Map may not be valid at this scale.



Natural Resources  
Conservation Service


Web Soil Survey  
National Cooperative Soil Survey

9/19/2025  
Page 1 of 3



MAP LEGEND

Area of Interest (AOI)

 Area of Interest (AOI)

Soils

 Soil Map Unit Polygons

 Soil Map Unit Lines

 Soil Map Unit Points

Special Point Features



Blowout



Borrow Pit



Clay Spot



Closed Depression



Gravel Pit



Gravelly Spot



Landfill



Lava Flow



Marsh or swamp



Mine or Quarry



Miscellaneous Water



Perennial Water



Rock Outcrop



Saline Spot



Sandy Spot



Severely Eroded Spot



Sinkhole



Slide or Slip



Sodic Spot



Spoil Area



Stony Spot



Very Stony Spot



Wet Spot



Other



Special Line Features

Water Features



Streams and Canals

Transportation



Rails



Interstate Highways



US Routes



Major Roads



Local Roads

Background



Aerial Photography

MAP INFORMATION

The soil surveys that comprise your AOI were mapped at 1:20,000.

Warning: Soil Map may not be valid at this scale.

Enlargement of maps beyond the scale of mapping can cause misunderstanding of the detail of mapping and accuracy of soil line placement. The maps do not show the small areas of contrasting soils that could have been shown at a more detailed scale.

Please rely on the bar scale on each map sheet for map measurements.

Source of Map: Natural Resources Conservation Service  
Web Soil Survey URL:  
Coordinate System: Web Mercator (EPSG:3857)

Maps from the Web Soil Survey are based on the Web Mercator projection, which preserves direction and shape but distorts distance and area. A projection that preserves area, such as the Albers equal-area conic projection, should be used if more accurate calculations of distance or area are required.

This product is generated from the USDA-NRCS certified data as of the version date(s) listed below.

Soil Survey Area: Eddy Area, New Mexico  
Survey Area Data: Version 20, Sep 3, 2024

Soil map units are labeled (as space allows) for map scales 1:50,000 or larger.

Date(s) aerial images were photographed: Nov 12, 2022—Dec 2, 2022

The orthophoto or other base map on which the soil lines were compiled and digitized probably differs from the background imagery displayed on these maps. As a result, some minor shifting of map unit boundaries may be evident.

Map Unit Legend

Map Unit Symbol	Map Unit Name	Acres in AOI	Percent of AOI
KT	Kimbrough-Stegall loams, 0 to 3 percent slopes	12.7	80.2%
LN	Largo-Stony land complex, 0 to 25 percent slopes	3.1	19.8%
Totals for Area of Interest		15.9	100.0%

(<https://www.usgs.gov/>)

Mineral Resources (<https://www.usgs.gov/energy-and-minerals/mineral-resources-program>)

/ Online Spatial Data (/) / Geology (/geology/) / by state (/geology/state/)

/ New Mexico (/geology/state/state.php?state=NM)

## Salado Formation

XML (/geology/state/xml/NMPsl;0)

JSON (/geology/state/json/NMPsl;0)

Shapefile (/geology/state/unit-shape.php?unit=NMPsl;0)

*Evaporite sequence, dominantly halite.*

<b>State</b>	New Mexico (/geology/state/state.php?state=NM)
<b>Name</b>	Salado Formation
<b>Geologic age</b>	Upper Permian
<b>Lithologic constituents</b>	<div>Major<div>Sedimentary &gt; Chemical &gt; Evaporite &gt; Salt (Bed) dominantly halite</div>Minor<div>Sedimentary &gt; Chemical &gt; Evaporite &gt; Anhydrite (Bed) no lith description on map - description from GEOLEX</div><div>Sedimentary &gt; Clastic &gt; Mixed-clastic (Bed) no lith description on map - description from GEOLEX - redbeds, shaly sandstone</div></div>
<b>References</b>	<div>Green, G.N., Jones, G.E., and Anderson, O.J., 1997, The Digital Geologic Map of New Mexico in ARC/INFO Format: U.S. Geological Survey Open-File Report 97-0052, 9 p., scale 1:500,000. <a href="https://pubs.er.usgs.gov/publication/ofr9752">https://pubs.er.usgs.gov/publication/ofr9752</a> (<a href="https://pubs.er.usgs.gov/publication/ofr9752">https://pubs.er.usgs.gov/publication/ofr9752</a>)</div> <div>USGS Geologic Names lexicon found at: <a href="http://ngmdb.usgs.gov/Geolex/">http://ngmdb.usgs.gov/Geolex/</a> <a href="https://ngmdb.usgs.gov/Geolex/search">https://ngmdb.usgs.gov/Geolex/search</a> (<a href="https://ngmdb.usgs.gov/Geolex/search">https://ngmdb.usgs.gov/Geolex/search</a>)</div>
<b>NGMDB product</b>	NGMDB product page for 22974 ( <a href="https://ngmdb.usgs.gov/Prodesc/proddesc_22974.htm">https://ngmdb.usgs.gov/Prodesc/proddesc_22974.htm</a> )
<b>Counties</b>	Chaves (/geology/state/fips-unit.php?code=f35005) - Eddy (/geology/state/fips-unit.php?code=f35015)



---

DOI Privacy Policy (<https://www.doi.gov/privacy>) | Legal ([https://www.usgs.gov/laws/policies\\_notices.html](https://www.usgs.gov/laws/policies_notices.html)) |  
Accessibility (<https://www2.usgs.gov/laws/accessibility.html>) | Site Map (<https://www.usgs.gov/sitemap.html>) |  
Contact USGS (<https://answers.usgs.gov/>)




---


U.S. Department of the Interior (<https://www.doi.gov/>) | DOI Inspector General (<https://www.doioig.gov/>) |  
White House (<https://www.whitehouse.gov/>) | E-gov (<https://www.whitehouse.gov/omb/management/egov/>) |  
No Fear Act (<https://www.doi.gov/pmb/eeo/no-fear-act>) | FOIA (<https://www2.usgs.gov/foia>)

# WAUKEE 36 ST COM CTB

Spur Energy  
Eddy County, NM  
Geological Map  
nAPP2526128734

## Legend

-  Older alluvial deposits of upland plains, piedmont areas, calcic soils, eolian cover sediments of High Plains region
-  Salado Formation
-  WAUKEE 36 ST COM CTB

 WAUKEE 36 ST COM CTB

Google Earth

2000 ft





# National Flood Hazard Layer FIRMette



104°13'35"W 32°47'36"N



0 250 500 1,000 1,500 2,000 Feet

1:6,000

104°12'58"W 32°47'6"N

Basemap Imagery Source: USGS National Map 2023

### Legend

SEE FIS REPORT FOR DETAILED LEGEND AND INDEX MAP FOR FIRM PANEL LAYOUT

SPECIAL FLOOD HAZARD AREAS		Without Base Flood Elevation (BFE) Zone A, V, A99
		With BFE or Depth Zone AE, AO, AH, VE, AR
		Regulatory Floodway
OTHER AREAS OF FLOOD HAZARD		0.2% Annual Chance Flood Hazard, Areas of 1% annual chance flood with average depth less than one foot or with drainage areas of less than one square mile Zone X
		Future Conditions 1% Annual Chance Flood Hazard Zone X
		Area with Reduced Flood Risk due to Levee. See Notes. Zone X
		Area with Flood Risk due to Levee Zone X
OTHER AREAS		NO SCREEN Area of Minimal Flood Hazard Zone X
		Effective LOMRs
GENERAL STRUCTURES		Area of Undetermined Flood Hazard Zone D
		Channel, Culvert, or Storm Sewer
OTHER FEATURES		Levee, Dike, or Floodwall
		20.2 Cross Sections with 1% Annual Chance Water Surface Elevation
		17.5 Coastal Transect
		Base Flood Elevation Line (BFE)
		Limit of Study
		Jurisdiction Boundary
		Coastal Transect Baseline
		Profile Baseline
		Hydrographic Feature
	MAP PANELS	
		No Digital Data Available
		Unmapped

The pin displayed on the map is an approximate point selected by the user and does not represent an authoritative property location.

This map complies with FEMA's standards for the use of digital flood maps if it is not void as described below. The basemap shown complies with FEMA's basemap accuracy standards

The flood hazard information is derived directly from the authoritative NFHL web services provided by FEMA. This map was exported on 9/23/2025 at 2:26 PM and does not reflect changes or amendments subsequent to this date and time. The NFHL and effective information may change or become superseded by new data over time.

This map image is void if the one or more of the following map elements do not appear: basemap imagery, flood zone labels, legend, scale bar, map creation date, community identifiers, FIRM panel number, and FIRM effective date. Map images for unmapped and unmodernized areas cannot be used for regulatory purposes.

Released to Imaging: 11/13/2025 1:21:17 PM

Received by OCD: 10/20/2025 11:19:55 AM



# Wetlands



September 19, 2025

## Wetlands

- Estuarine and Marine Deepwater
  Freshwater Forested/Shrub Wetland
  Other
- Estuarine and Marine Wetland
  Freshwater Pond
  Riverine

This map is for general reference only. The US Fish and Wildlife Service is not responsible for the accuracy or currentness of the base data shown on this map. All wetlands related data should be used in accordance with the layer metadata found on the Wetlands Mapper web site.

## Appendix C

- 48-Hour Notification
- Liner Inspection Form

**Sebastian@pimaoil.com**

---

**From:** OCDOnline@state.nm.us  
**Sent:** Tuesday, September 30, 2025 8:45 PM  
**To:** sebastian@pimaoil.com  
**Subject:** The Oil Conservation Division (OCD) has accepted the application, Application ID: 510956

To whom it may concern (c/o Sebastian Orozco for Spur Energy Partners LLC),

The OCD has received the submitted *Notification for Liner Inspection for a Release* (C-141L), for incident ID (n#) nAPP2526128734.

The liner inspection is expected to take place:

**When:** 10/03/2025 @ 08:00

**Where:** L-31-17S-28E 0 FNL 0 FEL (32.78908,-104.22127)

**Additional Information:** Pima Environmental  
619-721-4813

**Additional Instructions:** 32.78908,-104.22127

An OCD representative may be available onsite at the date and time reported. In the absence or presence of an OCD representative, liner inspection pursuant to 19.15.29.11.A(5)(a) NMAC is required. Should there be a change in the scheduled date and time of the sampling event, then another notification should be resubmitted through OCD permitting as soon as possible.

- **Failure to notify the OCD of liner inspections including any changes in date/time per the requirements of 19.15.29.11.A(5)(a)(ii) NMAC, may result in the inspection not being accepted.**

If you have any questions regarding this application, or don't know why you have received this email, please contact us.

**New Mexico Energy, Minerals and Natural Resources Department**  
1220 South St. Francis Drive  
Santa Fe, NM 87505



## Pima Environmental Services, LLC

**Liner Inspection Form**Company Name: Spur EnergySite: WAUKEE 36 ST COM CTBLat/Long: 32.78908,-104.22127NMOCD Incident ID  
& Incident Date: nAPP2526128734 09/05/20252-Day Notification  
Sent: via OCD portal 09/30/2025Inspection Date: 10/03/2025

Liner Type:	Earthen w/liner	Earthen no liner	Polystar
	<b>Steel w/poly liner</b>	Steel w/spray epoxy	No Liner

Other: \_\_\_\_\_

Visualization	Yes	No	Comments
Is there a tear in the liner?		X	
Are there holes in the liner?		X	
Is the liner retaining any fluids?	X		Standing fluid is visible inside the lined containment due to power washing efforts.
Does the liner have integrity to contain a leak?	X		

Comments: \_\_\_\_\_

Inspector Name: Andrew Franco Inspector Signature: Andrew Franco



## Appendix D

### ○ Photographic Documentation



## PHOTOGRAPHIC DOCUMENTATION

SITE NAME: Waukee 36 ST Com CTB

### Initial Liner Photos:



Site Information Sign.



Photo of liner taken during initial liner inspection facing west.



Photo of liner taken during initial liner inspection facing west.

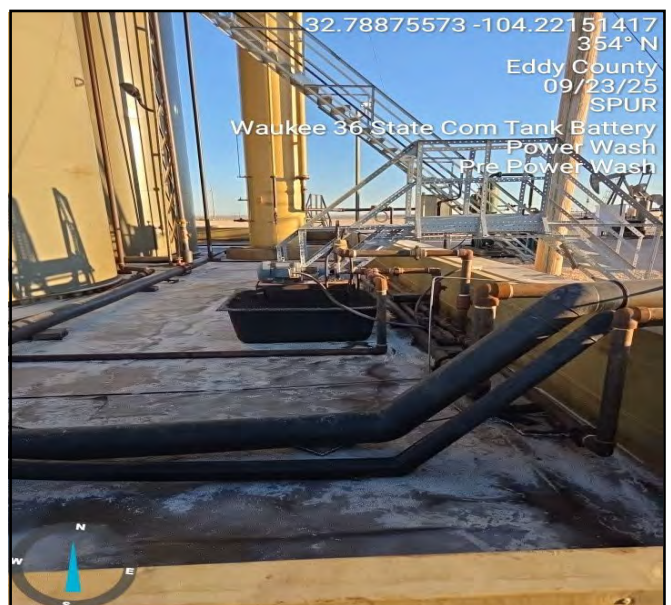


Photo of liner taken during initial liner inspection facing north.



Photo of liner taken during initial liner inspection facing northwest.



Photo of liner taken during initial liner inspection facing south.





## PHOTOGRAPHIC DOCUMENTATION

SITE NAME: Waukee 36 ST Com CTB

### Post Power Wash/ Liner Inspection :



Photo of location taken post power wash facing north.



Photo of location taken post power wash facing north.



Photo of location taken post power wash facing east.



Photo of location taken post power wash facing south.





Photo of location taken post power wash  
facing west.



Photo of location taken post power wash  
facing west.

## PHOTOGRAPHIC DOCUMENTATION

SITE NAME: Waukee 36 ST Com CTB

### Aerial Photos :



Aerial Photograph



Aerial Photograph



Aerial Photograph

Sante Fe Main Office  
Phone: (505) 476-3441

General Information  
Phone: (505) 629-6116

Online Phone Directory  
<https://www.emnrd.nm.gov/ocd/contact-us>

**State of New Mexico**  
**Energy, Minerals and Natural Resources**  
**Oil Conservation Division**  
**1220 S. St Francis Dr.**  
**Santa Fe, NM 87505**

QUESTIONS

Action 521094

**QUESTIONS**

Operator: Spur Energy Partners LLC 9655 Katy Freeway Houston, TX 77024	OGRID: 328947
	Action Number: 521094
	Action Type: [C-141] Remediation Closure Request C-141 (C-141-v-Closure)

**QUESTIONS**

Prerequisites	
Incident ID (n#)	nAPP2526128734
Incident Name	NAPP2526128734 WAUKEE 36 ST COM CTB @ L-31-17S-28E
Incident Type	Release Other
Incident Status	Remediation Closure Report Received

**Location of Release Source**

Please answer all the questions in this group.

Site Name	WAUKEE 36 ST COM CTB
Date Release Discovered	09/05/2025
Surface Owner	State

**Incident Details**

Please answer all the questions in this group.

Incident Type	Release Other
Did this release result in a fire or is the result of a fire	No
Did this release result in any injuries	No
Has this release reached or does it have a reasonable probability of reaching a watercourse	No
Has this release endangered or does it have a reasonable probability of endangering public health	No
Has this release substantially damaged or will it substantially damage property or the environment	No
Is this release of a volume that is or may with reasonable probability be detrimental to fresh water	No

**Nature and Volume of Release**

Material(s) released, please answer all that apply below. Any calculations or specific justifications for the volumes provided should be attached to the follow-up C-141 submission.

Crude Oil Released (bbls) Details	Cause: Equipment Failure   Tank (Any)   Crude Oil   Released: 4 BBL   Recovered: 4 BBL   Lost: 0 BBL.
Produced Water Released (bbls) Details	Cause: Equipment Failure   Tank (Any)   Produced Water   Released: 140 BBL   Recovered: 140 BBL   Lost: 0 BBL.
Is the concentration of chloride in the produced water >10,000 mg/l	Yes
Condensate Released (bbls) Details	Not answered.
Natural Gas Vented (Mcf) Details	Not answered.
Natural Gas Flared (Mcf) Details	Not answered.
Other Released Details	Not answered.
Are there additional details for the questions above (i.e. any answer containing Other, Specify, Unknown, and/or Fire, or any negative lost amounts)	PLC FAILURE CAUSED TANK TO OVERFLOW INTO LINED CONTAINMENT



Sante Fe Main Office  
Phone: (505) 476-3441

General Information  
Phone: (505) 629-6116

Online Phone Directory  
<https://www.emnrd.nm.gov/ocd/contact-us>

**State of New Mexico**  
**Energy, Minerals and Natural Resources**  
**Oil Conservation Division**  
**1220 S. St Francis Dr.**  
**Santa Fe, NM 87505**

QUESTIONS, Page 2

Action 521094

**QUESTIONS (continued)**

Operator: Spur Energy Partners LLC 9655 Katy Freeway Houston, TX 77024	OGRID: 328947
	Action Number: 521094
	Action Type: [C-141] Remediation Closure Request C-141 (C-141-v-Closure)

**QUESTIONS**

<b>Nature and Volume of Release (continued)</b>	
Is this a gas only submission (i.e. only significant Mcf values reported)	<b>No, according to supplied volumes this does not appear to be a "gas only" report.</b>
Was this a major release as defined by Subsection A of 19.15.29.7 NMAC	<b>Yes</b>
Reasons why this would be considered a submission for a notification of a major release	<b>From paragraph A. "Major release" determine using: (1) an unauthorized release of a volume, excluding gases, of 25 barrels or more.</b>
<i>With the implementation of the 19.15.27 NMAC (05/25/2021), venting and/or flaring of natural gas (i.e. gas only) are to be submitted on the C-129 form.</i>	

**Initial Response**

*The responsible party must undertake the following actions immediately unless they could create a safety hazard that would result in injury.*

The source of the release has been stopped	<b>True</b>
The impacted area has been secured to protect human health and the environment	<b>True</b>
Released materials have been contained via the use of berms or dikes, absorbent pads, or other containment devices	<b>True</b>
All free liquids and recoverable materials have been removed and managed appropriately	<b>True</b>
If all the actions described above have not been undertaken, explain why	<b>N/A</b>

*Per Paragraph (4) of Subsection B of 19.15.29.8 NMAC the responsible party may commence remediation immediately after discovery of a release. If remediation has begun, please prepare and attach a narrative of actions to date in the follow-up C-141 submission. If remedial efforts have been successfully completed or if the release occurred within a lined containment area (see Subparagraph (a) of Paragraph (5) of Subsection A of 19.15.29.11 NMAC), please prepare and attach all information needed for closure evaluation in the follow-up C-141 submission.*

I hereby certify that the information given above is true and complete to the best of my knowledge and understand that pursuant to OCD rules and regulations all operators are required to report and/or file certain release notifications and perform corrective actions for releases which may endanger public health or the environment. The acceptance of a C-141 report by the OCD does not relieve the operator of liability should their operations have failed to adequately investigate and remediate contamination that pose a threat to groundwater, surface water, human health or the environment. In addition, OCD acceptance of a C-141 report does not relieve the operator of responsibility for compliance with any other federal, state, or local laws and/or regulations.

I hereby agree and sign off to the above statement	Name: Katherine Purvis Title: EHS Coordinator Email: <a href="mailto:katherine.purvis@spurenergy.com">katherine.purvis@spurenergy.com</a> Date: 10/29/2025
--	---

Sante Fe Main Office  
Phone: (505) 476-3441

General Information  
Phone: (505) 629-6116

Online Phone Directory  
<https://www.emnrd.nm.gov/ocd/contact-us>

**State of New Mexico**  
**Energy, Minerals and Natural Resources**  
**Oil Conservation Division**  
**1220 S. St Francis Dr.**  
**Santa Fe, NM 87505**

QUESTIONS, Page 3

Action 521094

**QUESTIONS (continued)**

Operator: Spur Energy Partners LLC 9655 Katy Freeway Houston, TX 77024	OGRID: 328947
	Action Number: 521094
	Action Type: [C-141] Remediation Closure Request C-141 (C-141-v-Closure)

**QUESTIONS**

<b>Site Characterization</b>	
<i>Please answer all the questions in this group (only required when seeking remediation plan approval and beyond). This information must be provided to the appropriate district office no later than 90 days after the release discovery date.</i>	
What is the shallowest depth to groundwater beneath the area affected by the release in feet below ground surface (ft bgs)	Between 100 and 500 (ft.)
What method was used to determine the depth to ground water	NM OSE iWaters Database Search
Did this release impact groundwater or surface water	No
<b>What is the minimum distance, between the closest lateral extents of the release and the following surface areas:</b>	
A continuously flowing watercourse or any other significant watercourse	Greater than 5 (mi.)
Any lakebed, sinkhole, or playa lake (measured from the ordinary high-water mark)	Greater than 5 (mi.)
An occupied permanent residence, school, hospital, institution, or church	Between 1 and 5 (mi.)
A spring or a private domestic fresh water well used by less than five households for domestic or stock watering purposes	Between 1 and 5 (mi.)
Any other fresh water well or spring	Between 1 and 5 (mi.)
Incorporated municipal boundaries or a defined municipal fresh water well field	Between 1 and 5 (mi.)
A wetland	Between 500 and 1000 (ft.)
A subsurface mine	Greater than 5 (mi.)
An (non-karst) unstable area	Greater than 5 (mi.)
Categorize the risk of this well / site being in a karst geology	Medium
A 100-year floodplain	Between 1 and 5 (mi.)
Did the release impact areas not on an exploration, development, production, or storage site	No

<b>Remediation Plan</b>	
<i>Please answer all the questions that apply or are indicated. This information must be provided to the appropriate district office no later than 90 days after the release discovery date.</i>	
Requesting a remediation plan approval with this submission	Yes
<i>Attach a comprehensive report demonstrating the lateral and vertical extents of soil contamination associated with the release have been determined, pursuant to 19.15.29.11 NMAC and 19.15.29.13 NMAC.</i>	
Have the lateral and vertical extents of contamination been fully delineated	Yes
Was this release entirely contained within a lined containment area	Yes
<i>Per Subsection B of 19.15.29.11 NMAC unless the site characterization report includes completed efforts at remediation, the report must include a proposed remediation plan in accordance with 19.15.29.12 NMAC, which includes the anticipated timelines for beginning and completing the remediation.</i>	
On what estimated date will the remediation commence	10/03/2025
On what date will (or did) the final sampling or liner inspection occur	10/03/2025
On what date will (or was) the remediation complete(d)	10/03/2025
What is the estimated surface area (in square feet) that will be remediated	3750
What is the estimated volume (in cubic yards) that will be remediated	0
<i>These estimated dates and measurements are recognized to be the best guess or calculation at the time of submission and may (be) change(d) over time as more remediation efforts are completed.</i>	
<i>The OCD recognizes that proposed remediation measures may have to be minimally adjusted in accordance with the physical realities encountered during remediation. If the responsible party has any need to significantly deviate from the remediation plan proposed, then it should consult with the division to determine if another remediation plan submission is required.</i>	

Sante Fe Main Office  
Phone: (505) 476-3441

General Information  
Phone: (505) 629-6116

Online Phone Directory  
<https://www.emnrd.nm.gov/ocd/contact-us>

**State of New Mexico**  
**Energy, Minerals and Natural Resources**  
**Oil Conservation Division**  
**1220 S. St Francis Dr.**  
**Santa Fe, NM 87505**

QUESTIONS, Page 4

Action 521094

**QUESTIONS (continued)**

Operator: Spur Energy Partners LLC 9655 Katy Freeway Houston, TX 77024	OGRID: 328947
	Action Number: 521094
	Action Type: [C-141] Remediation Closure Request C-141 (C-141-v-Closure)

**QUESTIONS**

<b>Remediation Plan (continued)</b>	
<i>Please answer all the questions that apply or are indicated. This information must be provided to the appropriate district office no later than 90 days after the release discovery date.</i>	
<b>This remediation will (or is expected to) utilize the following processes to remediate / reduce contaminants:</b>	
<i>(Select all answers below that apply.)</i>	
Is (or was) there affected material present needing to be removed	No
Is (or was) there a power wash of the lined containment area (to be) performed	Yes
OTHER (Non-listed remedial process)	Not answered.
<i>Per Subsection B of 19.15.29.11 NMAC unless the site characterization report includes completed efforts at remediation, the report must include a proposed remediation plan in accordance with 19.15.29.12 NMAC, which includes the anticipated timelines for beginning and completing the remediation.</i>	
I hereby certify that the information given above is true and complete to the best of my knowledge and understand that pursuant to OCD rules and regulations all operators are required to report and/or file certain release notifications and perform corrective actions for releases which may endanger public health or the environment. The acceptance of a C-141 report by the OCD does not relieve the operator of liability should their operations have failed to adequately investigate and remediate contamination that pose a threat to groundwater, surface water, human health or the environment. In addition, OCD acceptance of a C-141 report does not relieve the operator of responsibility for compliance with any other federal, state, or local laws and/or regulations.	
I hereby agree and sign off to the above statement	Name: Katherine Purvis Title: EHS Coordinator Email: <a href="mailto:katherine.purvis@spurenergy.com">katherine.purvis@spurenergy.com</a> Date: 10/29/2025
<i>The OCD recognizes that proposed remediation measures may have to be minimally adjusted in accordance with the physical realities encountered during remediation. If the responsible party has any need to significantly deviate from the remediation plan proposed, then it should consult with the division to determine if another remediation plan submission is required.</i>	



Sante Fe Main Office  
Phone: (505) 476-3441

General Information  
Phone: (505) 629-6116

Online Phone Directory  
<https://www.emnrd.nm.gov/oecd/contact-us>

**State of New Mexico**  
**Energy, Minerals and Natural Resources**  
**Oil Conservation Division**  
**1220 S. St Francis Dr.**  
**Santa Fe, NM 87505**

QUESTIONS, Page 6

Action 521094

**QUESTIONS (continued)**

Operator: Spur Energy Partners LLC 9655 Katy Freeway Houston, TX 77024	OGRID:
	328947
	Action Number:
	521094
Action Type: [C-141] Remediation Closure Request C-141 (C-141-v-Closure)	

**QUESTIONS**

Liner Inspection Information	
Last liner inspection notification (C-141L) recorded	510956
Liner inspection date pursuant to Subparagraph (a) of Paragraph (5) of Subsection A of 19.15.29.11 NMAC	10/03/2025
Was all the impacted materials removed from the liner	Yes
What was the liner inspection surface area in square feet	3750

**Remediation Closure Request**

*Only answer the questions in this group if seeking remediation closure for this release because all remediation steps have been completed.*

Requesting a remediation closure approval with this submission	Yes
Have the lateral and vertical extents of contamination been fully delineated	Yes
Was this release entirely contained within a lined containment area	Yes
What was the total surface area (in square feet) remediated	3750
What was the total volume (cubic yards) remediated	0
Summarize any additional remediation activities not included by answers (above)	The lined containment was power-washed, and all standing fluids were recovered using a vacuum truck. Following remediation, a liner inspection was conducted, confirming that the containment liner maintained its integrity.

*The responsible party must attach information demonstrating they have complied with all applicable closure requirements and any conditions or directives of the OCD. This demonstration should be in the form of a comprehensive report (in .pdf format) including a scaled site map, sampling diagrams, relevant field notes, photographs of any excavation prior to backfilling, laboratory data including chain of custody documents of final sampling, and a narrative of the remedial activities. Refer to 19.15.29.12 NMAC.*

I hereby certify that the information given above is true and complete to the best of my knowledge and understand that pursuant to OCD rules and regulations all operators are required to report and/or file certain release notifications and perform corrective actions for releases which may endanger public health or the environment. The acceptance of a C-141 report by the OCD does not relieve the operator of liability should their operations have failed to adequately investigate and remediate contamination that pose a threat to groundwater, surface water, human health or the environment. In addition, OCD acceptance of a C-141 report does not relieve the operator of responsibility for compliance with any other federal, state, or local laws and/or regulations. The responsible party acknowledges they must substantially restore, reclaim, and re-vegetate the impacted surface area to the conditions that existed prior to the release or their final land use in accordance with 19.15.29.13 NMAC including notification to the OCD when reclamation and re-vegetation are complete.

I hereby agree and sign off to the above statement	Name: Katherine Purvis Title: EHS Coordinator Email: <a href="mailto:katherine.purvis@spurenergy.com">katherine.purvis@spurenergy.com</a> Date: 10/29/2025
--	---

Sante Fe Main Office  
Phone: (505) 476-3441

General Information  
Phone: (505) 629-6116

Online Phone Directory  
<https://www.emnrd.nm.gov/ocd/contact-us>

State of New Mexico  
Energy, Minerals and Natural Resources  
Oil Conservation Division  
1220 S. St Francis Dr.  
Santa Fe, NM 87505

CONDITIONS

Action 521094

CONDITIONS

Operator: Spur Energy Partners LLC 9655 Katy Freeway Houston, TX 77024	OGRID: 328947
	Action Number: 521094
	Action Type: [C-141] Remediation Closure Request C-141 (C-141-v-Closure)

CONDITIONS

Created By	Condition	Condition Date
nvelez	Liner inspection approved, release resolved. Restoration complete.	11/13/2025