



RECLAMATION REQUEST REPORT

Prepared For:

WPX Energy Permian, LLC

5315 Buena Vista Dr.

Carlsbad, NM 88220

Site Information:

Ross Draw Unit #011

Incident Number nAB1712951426

Unit O, Section 22, Township 26 South, Range 30 East

Eddy County, New Mexico

(32.0224991 °, -103.8669281 °)

Carlsbad • Houston • Midland • San Antonio • Lubbock • Hobbs • Lafayette



SYNOPSIS

Etech Environmental & Safety Solutions, Inc. (Etech), on behalf of WPX Energy Permian, LLC (WPX), presents the following Reclamation Request Report (RRR) to document restoration activities associated with Incident Number nAB1712951426 at the Ross Draw Unit #011 (Site) (**Figure 1** in **Appendix A**), following the completion of remediation activities to address an inadvertent release of crude oil and/or produced water. Based on the recently approved, completed remedial actions and recent Site restoration activities, WPX is requesting no further restorative actions until vegetative growth at the Site may be evaluated the next favorable growing season following re-seeding activities.

SITE BACKGROUND

On April 20, 2017, over-pressurization of an aboveground poly line caused the release of approximately 50 barrels (bbls) of crude oil into the northwestern pasture adjacent to the Site well pad. Vacuum trucks were dispatched and recovered approximately 40 bbls of crude oil. WPX immediately notified the New Mexico Conservation Oil Division (NMOCD) and Bureau of Land Management (BLM) via email on April 21, 2017, and reported the inadvertent release on a Corrective Action Form C-141 (Form C-141) on May 2, 2017, and was assigned Incident Number nAB1712951426.

The CRR, which can be found via application ID [305088](#), was received on January 18, 2024 and approved by the NMOCD on February 8, 2025 with the following conditions

- *"Remediation Closure approved. All areas not reasonably needed for production or subsequent drilling operations will need to be reclaimed and revegetated as soon as practical. Areas reasonably needed for production or subsequent drilling operations will need to be reclaimed and revegetated as soon as they are no longer reasonably needed. Sample locations included in the approved workplan (BH01, BH06, and BH12) will need to meet the reclamation requirements per 19.15.29.13 NMAC at time of reclamation. A report for reclamation and revegetation will need to be submitted and approved prior to this incident receiving the final status of "Restoration Complete"."*

It should be noted that the release occurred prior to the updated New Mexico Oil Conservation Division (NMOCD) implementation of the digital Release Notification and Corrective Action Form C-141 (Form C-141) and revised incident statuses, therefore in order to fulfill the redevelopment of 19.15.29 NMAC requirements, WPX has prepared this RRR for review and to update the incident portal 'Pending submission of Reclamation Report from the operator' status associated with the release.

RECLAMATION ACTIVITIES

Upon receipt of final laboratory analytical results for confirmation excavation soil samples, the excavation measured approximately 38,500 square feet (sqft) and was backfilled with approximately 4,380 cubic yards (CY) of clean, locally sourced soil to restore the Site to "as close to its original state" as possible (**Figure 2** in **Appendix A**). The final soil cover was contoured to match the Site's pre-existing grade to prevent ponding of water and erosion. During the next favorable growing season, the Site will be re-seeded with the Bureau of Land Management (BLM) Seed Mixture 4 (Gypsum Sites) via hand-broadcasting over the entire disturbed area following BLM guidelines (**Appendix B**), which will provide the maximum results of vegetation regrowth and ground surface coverage to match pre-existing conditions at the Site.

On May 29, 2025, Etech assessed the backfill material for its capacity to host vegetative growth. Six representative 5-point composite soil samples, comprised of five equivalent aliquots homogenized in a 1-gallon, resealable plastic bag, were collected from the soil cover within the excavation area (SC01, SC02 and SC03) at 0.25-foot bgs via hand shovel. For comparison, one discrete soil sample was collected from undisturbed, native soils currently supporting vegetative growth located outside of the excavation area



(BG01) at 0.25-foot bgs via hand shovel. The composite soil samples were field screened for volatile organic compounds (VOCs) utilizing a calibrated photoionization detector (PID) and chloride using Hach® chloride QuanTab® test strips, and qualitatively evaluated for nutrient density of pH, Nitrogen (N), Phosphorus (P), and Potassium (K) utilizing a HoldAll® Soil Test Kit according to the operating manual, which is included in **Appendix C**.

The composite soil cover samples were immediately placed on ice and transported under strict chain-of-custody procedures to Envirotech, Inc. in Farmington, New Mexico to be tested for the following analyses:

- Benzene, Toluene, Ethylbenzene, Total Xylenes (BTEX) by method of Environmental Protection Agency (EPA) 8260B,
- Total Petroleum Hydrocarbon (TPH) by method of EPA 8015D, and
- Chloride by method of EPA 300.0.

Collectively, BTEX, TPH, and chloride will henceforth be referred to as Constituents of Concern (COCs).

LABORATORY ANALYTICAL RESULTS

Laboratory analytical results indicated that concentrations of COCs for all soil cover samples were below the applicable Site Closure Criteria and/or reclamation standard. Laboratory analytical results are summarized in **Table 1** included in **Appendix D**. The executed chain-of-custody forms and laboratory analytical results are provided in **Appendix E**.

Field screening results indicated the backfill material appears to correlate with surrounding soil conditions currently supporting native vegetative growth, as summarized in **Table 2** included in **Appendix D**. The location of the restoration areas and field screened soil sample locations are shown in **Figure 2** in **Appendix A**. Photographic documentation of restoration activities is included in **Appendix F**.

RECLAMATION APPROVAL REQUEST

Based on the field assessment of the backfill activities and laboratory analytical results, WPX believes the soil cover of the excavation area has been restored "as close to its original state" as possible in order to promote vegetative regrowth. Completed restoration activities meet requirements set forth in NMAC 19.15.29.13 regulations and WPX respectfully requests approval of this RRR associated with Incident Number nAB1712951426. As such, the next restorative action will be an assessment of the vegetative regrowth during the next favorable growing season following reseeding activities.

If you have any questions or comments, please do not hesitate to contact Joseph Hernandez at (432) 305-6413 or joseph@etechenv.com or Abraham Valladares (432) 967-9624 or abevalladares@etechenv.com. **Appendix G** provides correspondence email notification receipts associated with the subject release.

Sincerely,
Etech Environmental and Safety Solutions, Inc.

Abraham Valladares
GIS Analyst/Reporting

Joseph S. Hernandez
Senior Managing Geologist



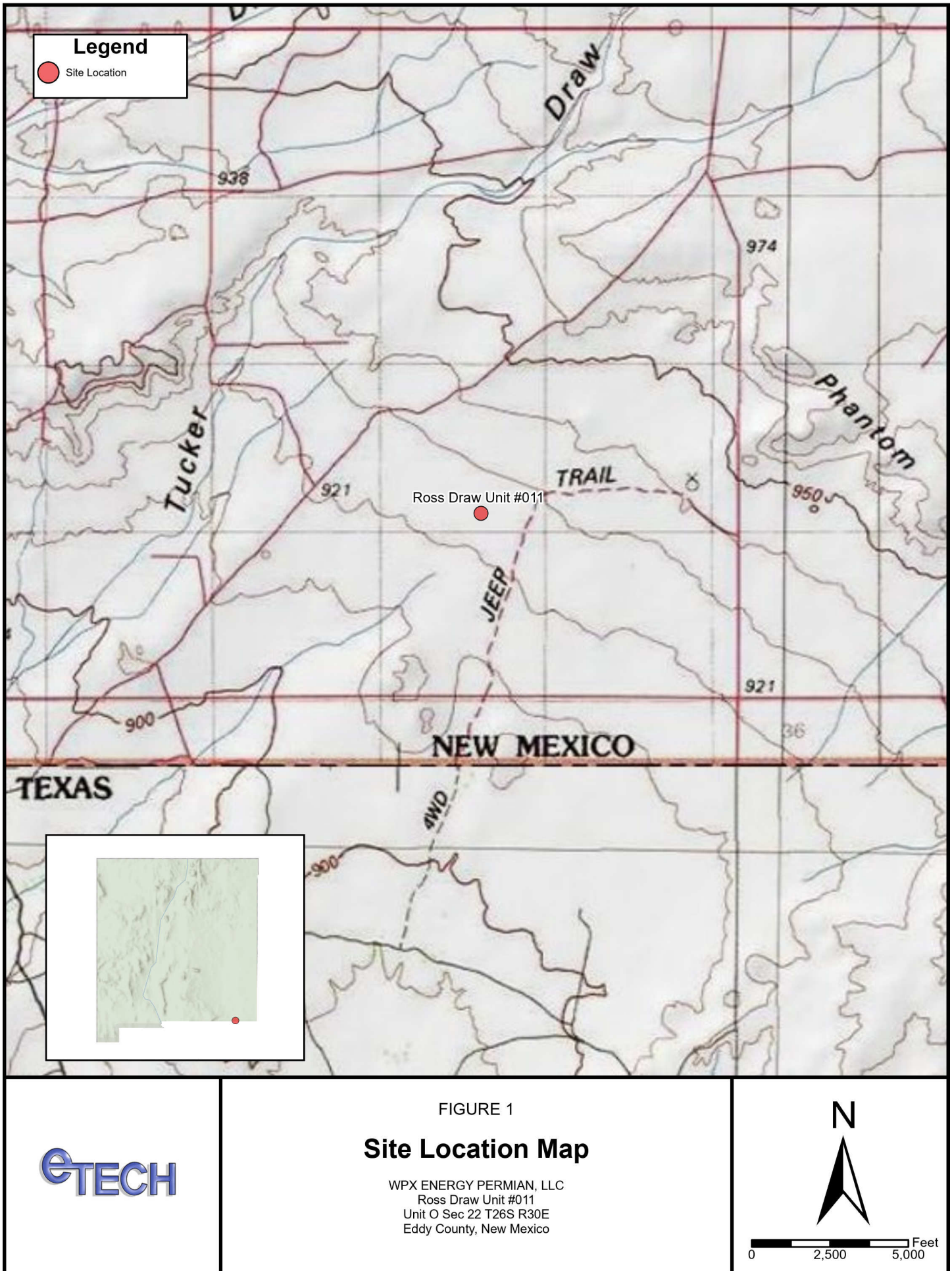
cc: Jim Raley, WPX
New Mexico Oil Conservation Division
Bureau of Land Management

Appendices:

- Appendix A:** Figure 1: Site Map
Figure 2: Restoration Area
- Appendix B:** BLM Seed Mixture 4, for Gypsum Sites
- Appendix C:** HoldAll© Operating Manual
- Appendix D:** Tables
- Appendix E:** Laboratory Analytical Reports & Chain-of-Custody Documentation
- Appendix F:** Photographic Logs
- Appendix G:** Correspondence & Notifications

APPENDIX A

Figures



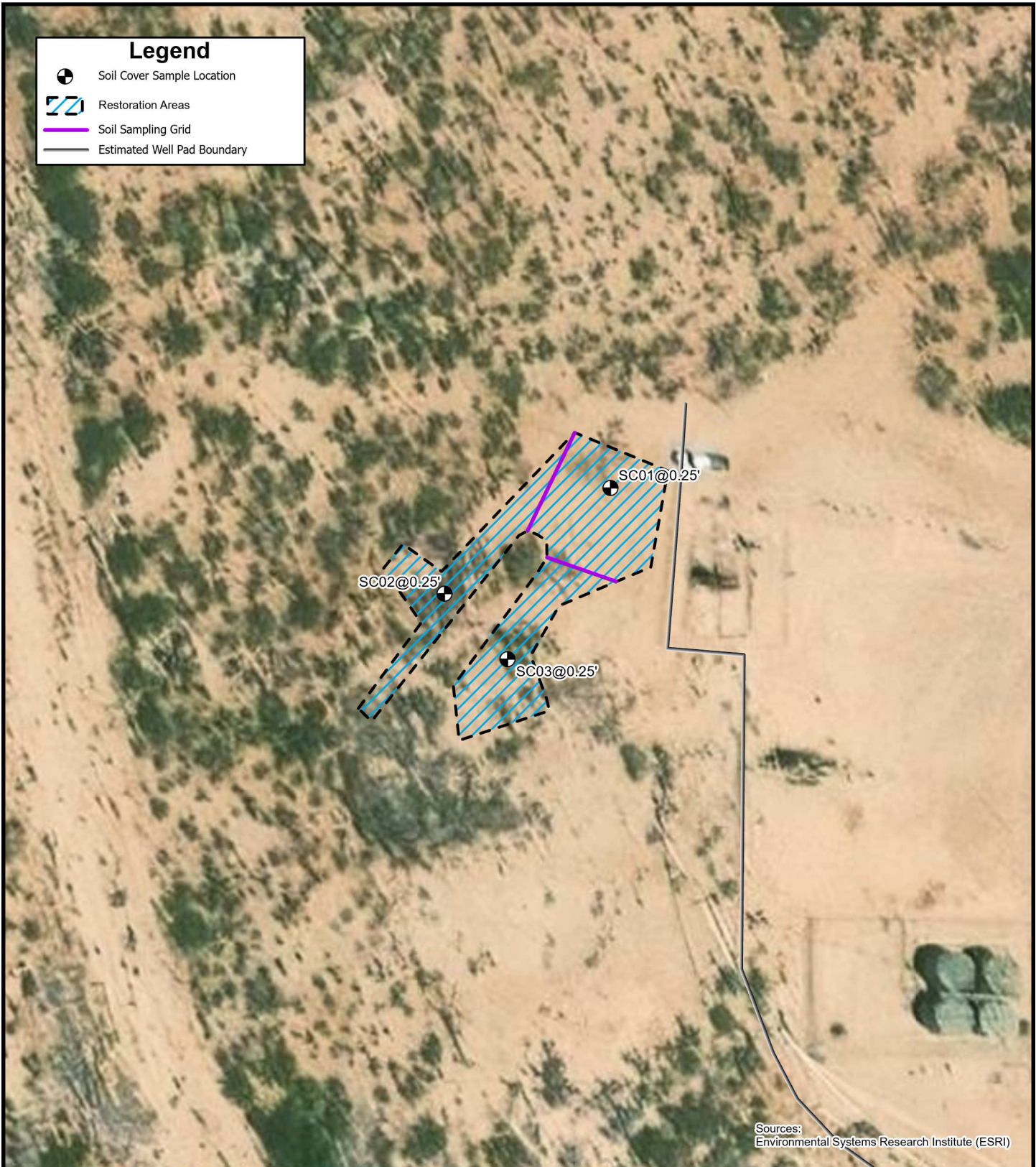


FIGURE 2

Restoration Area

WPX ENERGY PERMIAN, LLC
Ross Draw Unit #011
Unit O Sec 22 T26S R30E
Eddy County, New Mexico



0 37.5 75 Feet

APPENDIX B

BLM Seed Mixture 4, For Gypsum Sites

EXHIBIT
 Date
 BLM Serial No.:
 Company Reference:

Mixture 4, for Gypsum Sites

The holder shall seed all the disturbed areas with the seed mixture listed below. The seed mixture shall be planted in the amounts specified in pounds of pure live seed (PLS)* per acre. There shall be no primary or secondary noxious weeds in the seed mixture. Seed will be tested and the viability testing of seed will be done in accordance with State law(s) and within nine (9) months prior to purchase. Commercial seed will be either certified or registered seed. The seed container will be tagged in accordance with State law(s) and available for inspection by the authorized officer.

Seed will be planted using a drill equipped with a depth regulator to ensure proper depth of planting where drilling is possible. The seed mixture will be evenly and uniformly planted over the disturbed area (smaller/heavier seeds have a tendency to drop the bottom of the drill and are planted first). The holder shall take appropriate measures to ensure this does not occur. Where drilling is not possible, seed will be broadcast and the area shall be raked or chained to cover the seed. When broadcasting the seed, the pounds per acre are to be doubled. The seeding will be repeated until a satisfactory stand is established as determined by the authorized officer. Evaluation of growth will not be made before completion of at least one full growing season after seeding.

Species to be planted in pounds of pure live seed* per acre:

<u>Species</u>	<u>lb/acre</u>
Alkali Sacaton (<i>Sporobolus airoides</i>)	1.5
DWS~ Four-wing saltbush (<i>Atriplex canescens</i>)	8.0

~DWS: DeWinged Seed

*Pounds of pure live seed:

Pounds of seed x percent purity x percent germination = pounds pure live seed

APPENDIX C

HoldAll© Operating Manual

P.O. Box 62228 Midland • TX • 79711 • Tel: 432-563-2200 • Fax: 432-563-2213



HoldAll®
Decorative Plant Accessories

40 TESTS
DIRECTIONS INSIDE

SOIL TEST KIT



Plants & Flowers



Grasses & Lawns



Fruits & Veggies



Trees & Shrubs

757860

HoldAll®
Decorative Plant Accessories**757860**

SOIL TEST KIT

Tests Your Soil for a Healthy Garden

• pH • Nitrogen(N) • Phosphorus(P) • Potassium(K) •

PREPARING YOUR SOIL SAMPLES

For lawns, annuals or house plants, take the soil sample from about 2-3" below the surface. For perennials especially shrubs, vegetables and fruit, the sample should be from 4" deep.

Avoid touching the soil with your hands. Test different areas of your soil, as it may differ according to past cultivation, underlying soil differences or a localized condition. It is preferable to make individual tests on several samples from different areas, than to mix the samples together.

Place your soil sample into a clean container. Break the sample up with the trowel or spoon and allow it to dry out naturally. This is not essential, however it makes working with the sample easier. Remove any small stones, organic material such as grass, weeds or roots and hard particles of lime. Then crumble the sample finely and mix it thoroughly.

HOW TO TEST YOUR SOIL:

Tube caps and capsules are color-coded for simplicity:

Green = pH Purple = Nitrogen
Blue = Phosphorus Orange = Potash

pH TEST:

- 1. Remove cap from the green capped tube.
 - 2. Fill tube with soil to the first line.
 - 3. Carefully open a green capsule and pour powder into the tube.
 - 4. Add water (preferably distilled) to the fourth line.
 - 5. Cap tube and shake thoroughly.
 - 6. Allow soil to settle and color to develop for about a minute.
 - 7. Compare color of solution to the pH color chart.
- Repeat for remaining capsules.



pH 7.5 - Alkaline

pH 7.0 - Neutral

pH 6.5 - Slight A

pH 6.0 - Acid

pH 5.5 - Acid

pH 5.0 - Very Acid

pH 4.5 - Very Acid

NITROGEN, PHOSPHORUS & POTASH TESTS:

Fill a clean jar or can with 1 part soil and 5 parts water. Thoroughly shake or stir the soil and water together for at least one minute and then allow the mixture to stand undisturbed until it settles (30 minutes to 24 hours, dependent on soil). A fine clay soil will take much longer to settle out than a coarse sandy soil. The clarity of the solution will also vary, the clearer the better, however cloudiness will not affect the accuracy of the test.

PLANT FOOD CHART		
Nitrogen	Phosphorous	Potash
High	High	High
Medium	Medium	Medium
Low	Low	Low
Very Low	Very Low	Very Low

- 1. Remove the cap from the tube. (Please note that the color of the capsules should match the color of the tube cap.) Using dropper provided, fill the tube to the fourth line with liquid from your soil mixture. Avoid disturbing the sediment
- 2. Carefully separate the two halves of one of the capsules. Pour the powder into the tube.
- 3. Cap the tube and shake thoroughly. Allow color to develop for 10 minutes.
- 4. Compare color of solution to the appropriate portion of the plant food color chart. For best results allow daylight, not direct sunlight, to illuminate the solution. Note your results. Repeat for remaining capsules.

TO RAISE OR LOWER pH OF YOUR SOIL

Raising and lowering pH is not an exact science & most plants have a reasonably wide tolerance, certainly to within 1 pH point. Consult the pH Preference List and you will see that the majority can manage well on a pH around 6.5 but some need an alkaline soil

and some a particularly acid soil. Altering pH takes time so do not expect rapid changes; rather, work steadily towards giving a plant its ideal conditions.

ADJUSTING pH

pH can be adjusted to provide more suitable growing conditions for the different plants you wish to grow. Or, you can leave the pH of the soil as it is and select plants that like the level revealed by your test. Once you have your pH reading, check the pH Preference List for the pH levels of over 450 popular plants, trees, shrubs, vegetables and fruits. If your pH reading differs significantly from the list's recommended levels, follow instructions below for adjusting soil pH. You can correct pH at any time of the year but it

is best to start in the Fall and check progress in the Spring. After working to adjust your soil, retest for pH level in 40-60 days. If results are still significantly off, retreat your soil, not exceeding recommended application levels. Allow one month to pass between adding lime and adding fertilizers.

SOIL TYPES

Sandy Soils: A light, coarse soil comprised of crumbling and alluvial debris.
Loam Soils: A medium friable soil, consisting of a blend of coarse (sand) alluvium and fine (clay) particles mixed within fairly broad limits with a little lime and humus.
Clay Soils: A heavy, clinging, impermeable

soil, comprised of very fine particles with little lime and humus and tending to be waterlogged in winter and very dry in summer.

ADJUSTING SOIL pH - HOW MUCH TO APPLY

Material	phChange	Sandy	Loamy	Clay
Dolomitic or Calcic Limestone	+0.5 unit (0.5 pH)	2.5	2.5	2.5
	+1.0 unit (1.0 pH)	5.0	5.0	5.0
Hydrated Lime	+0.5 unit (0.5 pH)	1.25 - 2.0	1.25 - 2.0	1.25 - 2.0
	+1.0 unit (1.0 pH)	3.5 - 4.0	3.5 - 4.0	3.5 - 4.0
Iron Sulfate	-0.5 unit (0.5 pH)	0.75	0.75	0.75
	-1.0 unit (1.0 pH)	1.5	1.5	1.5
Aluminum Sulfate	-0.5 unit (0.5 pH)	0.5 - 0.75	0.5 - 0.75	0.5 - 0.75
	-1.0 unit (1.0 pH)	1 - 1.25	1 - 1.25	1 - 1.25

Amounts listed are pounds per 100 square feet. Do not add more than 5lbs. of lime or sulfur in one application.

FERTILIZER RECOMMENDATIONS

FEEDING PRIOR TO PLANTING

Adequate reserves of plant food should be available in the soil before planting vegetables, preparing a seed or flower bed, sodding or seeding a lawn, or planting shrubs and trees. To make up any deficiencies, apply fertilizers from the following chart according to your soil test result.

TEST RESULTS	Very Low	Low	Medium	High
Nitrogen Fertilizers (%N)				
Dried Blood (11%)	36	19	6	N/A
Nitrate of Soda (16%)	27	14	3	N/A
Phosphate Fertilizers (%P)				
Bone Meal (19%)	27	14	6	N/A
Triple Superphosphate (46%)	10.25	5.25-5.5	2.25	N/A
Potash Fertilizers (%K)				
Muriate of Potash (60%)	8.75-9	4.75-5	2.25-2.5	N/A

Amounts listed are ounces per 100 square feet. (Ounces referred to are by weight)

FEEDING ESTABLISHED PLANTS AND BEDS

Based on your test results, apply the appropriate fertilizer(s) in the amounts recommended in the following chart.

RECOMMENDATIONS FOR N, P AND K RESULTS

	Very Low			Low			Medium		
	N	P	K	N	P	K	N	P	K
Lawn	22.0-22.5	0.75-1.0	4.75-5.0	14.0-14.5	1.0-1.5	2.25-2.5	3.75-4.0	0	0
Fruit	14.0-14.5	6.5	13.5-14.0	7.75-8.0	4.0-4.25	8.75-9.0	3.75-4.0	2.25	4.75-5.0
Flower	14.0-14.25	6.5	13.5-14.0	7.75-8.0	4.0-4.25	8.75-9.0	3.75-4.0	2.25	4.75-5.0
Shrubs (flowering)	14.0-14.25	8.25-8.5	13.5-14.0	7.75-8.0	4.0-4.25	8.75-9.0	3.75-4.0	1.0-1.25	4.75-5.0
Shrubs (foliage)	22.0-22.5	10.5-10.75	8.75-9.0	14.0-14.5	5.25-5.5	4.75-5.0	3.75-4.0	2.25	2.25-2.5
Veggies (root)	14.0-14.25	12.0-12.25	8.75-9.0	14.0-14.5	5.25-5.5	4.75-5.0	3.75-4.0	3.0	2.25-2.5
Veggies (leafy)	28.25-29.0	10.25	8.75-9.0	14.0-14.5	5.25-5.5	4.75-5.0	7.75-8.0	2.25	2.25-2.5
Tree	14.0-14.5	10.25	8.75-9.0	7.75-8.0	5.25-5.5	4.75-5.0	3.75-4.0	2.25	2.25-2.5
General Feed	22.0-22.5	8.25-8.5	8.75-9.0	10.5-11.0	4.0-4.25	4.75-5.0	3.75-4.0	1.0-1.25	2.25-2.5

	High		
	N	P	K
Lawn	N/A	N/A	N/A
Fruit	N/A	N/A	N/A
Flower	N/A	N/A	N/A
Shrubs (flowering)	N/A	N/A	N/A
Shrubs (foliage)	N/A	N/A	N/A
Veggies (root)	N/A	N/A	N/A
Veggies (leafy)	N/A	N/A	N/A
Tree	N/A	N/A	N/A
General Feed	N/A	N/A	N/A

The recommendations are based on the following fertilizers sources: Nitrate of Soda (16% N), Triple Superphosphate (46% P₂O₅) and Muriate of Potassium (60% K₂O). The amounts listed are in oz. /100 sq. ft. (Ounces referred to are by weight, not volume.) If you wish to use other fertilizer, simply check the package for the percentage of nutrients for N, P, & K and adjust the application level accordingly.

SPECIAL RECOMMENDATIONS FOR LAWNS

For a new lawn, pay special attention to soil preparation before planting. Proper soil preparation for any size lawn will have a significant impact on the amount of water and care it demands in the future. Till the soil to a depth of at least 12" and incorporate plenty of organic material (9" or more). Test your soil for pH and adjust to the levels recommended on pH Preference List for your type of grass. Refer to the Adjusting Soil pH chart for recommended lime or sulfate applications.

For established lawns, Nitrogen is the most essential nutrient to promote lush growth and deep, green color. Phosphorus and Potassium, in lesser quantities, are also important for strong root formation and growth. Compound fertilizers will supply all 3 nutrients, or you can select an individual fertilizer, such as Nitrate of Soda. The following chart gives recommended application levels specifically for lawns, based on your Nitrogen soil test results.

RECOMMENDATIONS FOR LAWNS

Fertilizer Type	Very Low	Low
24-4-4	4.0 lbs.	2.0 lbs.
24-3-4	3.1 lbs.	1.55 lbs.
30-4-4	3.0 lbs.	1.5 lbs.

	Medium	High
24-4-4	1.0 lbs.	N/A
24-3-4	.77 lbs.	N/A
30-4-4	.75 lbs.	N/A

Amounts listed are pounds per 1000 square feet.

SAFETY & HYGIENE

Dispose of test solutions by rinsing down the sink. Empty gelatin capsules should be disposed of immediately with household waste. Wash the test tubes and caps in warm, soapy water immediately after each use. Make sure any sediment or color staining is removed. Rinse well and dry. Each bag of capsules should be stored inside the blister. Fit the caps on each test tube. Place all components back into the package. The blister pack has been specially designed to be reused as a storage container.

Store your kit in clean, dry conditions, indoors. The powders are safe in normal domestic terms but like all chemicals and pharmaceuticals, they should be put away and kept out of reach of children. Try to avoid touching the powders. Always wash your hands thoroughly after making your tests. Do not eat, drink or smoke while using the soil test kit. Keep powders away from food, drink and animal feed. If taken internally, drink copious amounts of water and seek medical advice.

CAUTIONS

Where a lot of fertilizer is needed to correct one plant food, divide the applications over several weeks. Do not add lime and fertilizer together; lime first. Allow at least one month to pass before applying fertilizer. Retest 30 days after applying fertilizer.

HoldAll®

Decorative Plant Accessories

Plant pH Preference List

NAME	pH	NAME	pH	NAME	pH	NAME	pH	NAME	pH
FRUIT		VEGETABLES AND HERBS		HOUSE and GREENHOUSE PLANTS		FLOWERS, TREES AND SHRUBS		FLOWERS, TREES AND SHRUBS	
APPLE	5.0 - 6.5	SAGE	5.5 - 6.5	GENISTA	6.5 - 7.5	ASPERULA	6.0 - 8.0	LAUREL	6.5 - 7.5
APRICOT	6.0 - 7.0	SHALLOT	5.5 - 7.0	GERANIUM	6.0 - 8.0	ASPHODOLINE	6.0 - 8.0	LAVENDER	6.5 - 7.5
AVOCADO	6.0 - 7.5	SORGHUM	5.5 - 7.5	GLOXINIA	5.5 - 6.5	ASTER	5.5 - 7.5	LIATRIS	5.5 - 7.5
BANANA	5.0 - 7.0	SOYBEAN	5.5 - 6.5	GRAPE IVY	5.0 - 6.5	AUBRITA	6.0 - 7.5	LIGUSTRUM	5.0 - 7.5
BLACKBERRY	5.0 - 6.0	SPEARMINT	5.5 - 7.5	GRAPE HYACINTH	6.0 - 7.5	AZALEA	4.5 - 6.0	LILAC	6.0 - 7.5
BLUEBERRY	4.0 - 6.0	SPINACH	6.0 - 7.5	GREVILLEA	5.5 - 6.5	BALLOON FLOWER	6.0 - 6.5	LILY OF THE VALLEY	4.5 - 6.0
CANTALOUPE	6.5 - 7.5	SWEDE	5.0 - 7.0	GYNURA	5.5 - 6.5	BAYBERRY	4.0 - 6.0	LITHOSPERMUM	5.0 - 6.5
CHERRY	6.0 - 7.5	THYME	5.5 - 7.0	HEDERA (IVY)	6.0 - 8.0	BERGENIA	6.0 - 7.5	LOBELIA	6.5 - 7.5
CRANBERRY	5.5 - 6.5	TOMATO	5.5 - 7.5	HELIOTROPIUM	5.0 - 6.0	BLEEDING HEART	6.0 - 7.5	LUPINUS	5.5 - 7.0
CURRENT: Black	6.0 - 8.0	TURNIP	5.5 - 7.0	HENS AND CHICKENS	6.0 - 7.0	BLUEBELL	6.0 - 7.6	MAGNOLIA	5.0 - 6.0
Red	5.5 - 7.0	WATER CRESS	6.0 - 8.0	HERRINGBONE PLANT	6.0 - 6.0	BROOM	5.0 - 6.0	MAHONIA	6.0 - 7.0
White	6.0 - 8.0	HOUSE and GREENHOUSE PLANTS		HIBISCUS PLANT	6.0 - 8.0	BUDDLEIA	6.0 - 7.0	MARGOLD	5.5 - 7.0
DAMSON	6.0 - 7.5	ABUTILON	5.5 - 6.5	HOYA	5.0 - 6.5	BUPHTHALUM	6.0 - 8.0	MOLINIA	4.0 - 5.0
GOOSEBERRY	5.0 - 6.5	ACORUS	5.0 - 6.5	IMPATIENS	5.5 - 6.5	BUTTERFLY BUSH	4.0 - 6.0	MORAEA	5.5 - 6.5
GRAPEVINE	6.0 - 7.0	AECHMEA	5.0 - 5.5	IVY TREE	6.0 - 7.0	CALENDULA	5.5 - 7.0	MORNING GLORY	6.0 - 7.5
GRAPEFRUIT	6.0 - 7.5	AFRICAN VIOLET	6.0 - 7.0	JACARANDA	6.0 - 7.5	CAMASSIA	6.0 - 8.0	MOSS	6.0 - 8.0
HAZELNUT	6.0 - 7.0	AGLAONEMA	5.0 - 6.0	JAPANESE SEDGE	6.0 - 8.0	CANDYTUFT	6.0 - 7.5	MOSS, SPHAGNUM	3.5 - 5.0
HOP	6.0 - 7.5	AMARYLLIS	5.5 - 6.5	JASMINUM	5.5 - 7.0	CANNA	6.0 - 8.0	MYOSOTIS	6.0 - 7.0
HUCKLEBERRY	4.0 - 6.0	ANTHURIUM	5.0 - 6.0	JERUSALEM CHERRY	5.5 - 6.5	CANTERBURY BELLS	7.0 - 7.5	NARCISSUS	6.0 - 8.5
LEMON	6.0 - 7.0	APHELANDRA	5.0 - 6.0	JESSAMONE	5.0 - 6.0	CARDINAL FLOWER	4.0 - 6.0	NASTURTIUM	5.5 - 7.5
LYCHEE	6.0 - 7.0	ARAUCARIA	5.0 - 6.0	KALANCHOE	6.0 - 7.5	CARNATION	6.0 - 7.5	NICOTIANA	5.5 - 6.5
MANGO	5.0 - 6.0	ASPARAGUS FERN	6.0 - 8.0	KANGAROO THORN	6.0 - 8.0	CATALPA	6.0 - 8.0	PACHYSANDRA	5.0 - 8.0
MELON	5.5 - 6.5	ASPIDISTRA	4.0 - 5.5	KANGAROO VINE	5.0 - 6.5	CELOSIA	6.0 - 7.0	PAEONIA	6.0 - 7.5
MULBERRY	6.0 - 7.5	AZALEA	4.5 - 6.0	LANTANA	5.5 - 7.0	CENTAUREA	5.0 - 6.5	PANSY	5.5 - 7.0
NECTARINE	6.0 - 7.5	BABY'S BREATH	6.0 - 7.5	LAURUS (BAY TREE)	5.0 - 6.0	CERASTIUM	6.0 - 7.0	PASSION FLOWER	6.0 - 8.0
PEACH	6.0 - 7.5	BABY'S TEARS	5.0 - 6.0	LEMON PLANT	6.0 - 7.5	CHRYSANTHEMUM	6.0 - 7.0	PASQUE FLOWER	5.0 - 6.0
PEAR	6.0 - 7.5	BEGONIA	5.5 - 7.0	MIMOSA	5.0 - 7.0	CISSUS	6.0 - 7.5	PAULOWNIA	6.0 - 8.0
PINEAPPLE	5.0 - 6.0	BIRD OF PARADISE	6.0 - 6.5	MIND YOUR OWN BUSINESS	5.0 - 5.5	CISTUS	6.0 - 7.5	PENSTEMON	5.5 - 7.0
PLUM	6.0 - 7.5	BISHOP'S CAP	5.0 - 6.0	MONSTERA	5.0 - 6.0	CLARKIA	6.0 - 6.5	PERIWINKLE	6.0 - 7.5
POMEGRANATE	5.5 - 6.5	BLACK-EYED SUSAN	5.5 - 7.5	MYRTLE	6.0 - 8.0	CLIANTHUS	6.0 - 7.5	PETUNIA	6.0 - 7.5
QUINCE	6.0 - 7.5	BLOOD LEAF	5.5 - 6.5	NEVER NEVER PLANT	5.0 - 6.0	CLEMATIS	5.5 - 7.0	PINKS	6.0 - 7.5
RASPBERRY	5.0 - 7.5	BOTTLEBRUSH	6.0 - 7.5	NICODEMIA (INDOOR OAK)	6.0 - 8.0	COLCHICUM	5.5 - 6.5	POLYGONUM	6.0 - 7.5
RHUBARB	5.5 - 7.0	BOUGAINVILLEA	5.5 - 7.5	NORFOLK ISLAND PINE	5.0 - 6.0	COLUMBINE	6.0 - 7.0	POLYANTHUS	6.0 - 7.5
STRAWBERRY	5.0 - 7.5	BOXWOOD	6.0 - 7.5	OLEANDER	6.0 - 7.5	CONVOLVULUS	6.0 - 8.0	POPPY	6.0 - 7.5
WATERMELON	5.5 - 6.5	BROMELIADS	5.0 - 7.5	OPLISMENUS	5.0 - 6.0	COREOPSIS	5.0 - 6.0	PORTULACA	5.5 - 7.5
VEGETABLES AND HERBS		BUTTERFLY FLOWER	6.0 - 7.5	ORCHID	4.5 - 5.5	CORONILLA	6.5 - 7.5	PRIMROSE	5.5 - 6.5
ARTICHOKE	6.5 - 7.5	CACTI	4.5 - 6.0	OXALIS	6.0 - 8.0	CORYDALIS	6.0 - 8.0	PRIMULA	6.0 - 7.5
ASPARAGUS	6.0 - 8.0	CALCAOLARIA	6.0 - 7.0	PALMS	6.0 - 7.5	COSMOS	5.0 - 8.0	PRIVET	5.0 - 7.5
BASIL	5.5 - 6.5	CALADIUM	5.0 - 6.0	PANDANUS	5.0 - 6.0	COTTONEASTER	6.0 - 8.0	PRUNELLA	6.0 - 7.5
BEAN	6.0 - 7.5	CALLA LILY	6.0 - 7.0	PEACOCK PLANT	5.0 - 6.0	CRAB APPLE	6.0 - 7.5	PRUNUS	6.5 - 7.5
(Runner, Broad, French)		CAMELIA	4.5 - 5.5	PELLIONIA	5.0 - 6.0	CROCUS	6.0 - 8.0	PYRETHRUM	6.0 - 7.5
BEETROOT	6.0 - 7.5	CAMPANULA	5.5 - 6.5	PEPEROMIA	5.0 - 6.0	CYNOGLOSSUM	6.0 - 7.5	RED HOT POKER	6.0 - 7.5
BROCCOLI	6.0 - 7.0	CAPSICUM	5.0 - 6.5	PHILODENDRON	5.0 - 6.0	DAFFODIL	6.0 - 6.5	RHODODENDRON	4.5 - 6.0
BRUSSELS SPROUTS	6.0 - 7.5	CARDINAL FLOWER	5.0 - 6.0	PILEA	6.0 - 8.0	DAHLIA	6.0 - 7.5	ROSES:	
CABBAGE	6.0 - 7.5	CASTOR OIL PLANT	5.5 - 6.5	PLUMBAGO	5.5 - 6.5	DAY LILY	6.0 - 8.0	HYBRID TEA	5.5 - 7.0
CALABRESE	6.5 - 7.5	CANTURY PLANT	5.0 - 6.5	PODACARPUS	5.0 - 6.5	DELPHINIUM	6.0 - 7.5	CLIMBING	6.0 - 7.0
CARROT	5.5 - 7.0	CHINESE EVERGREEN	5.0 - 6.0	POINTSETTIA	6.0 - 7.5	DEUTZIA	6.0 - 7.5	RAMBLING	5.5 - 7.0
CAULIFLOWER	5.5 - 7.5	CHINESE PRIMROSE	6.0 - 7.5	POLYSCIAS	6.0 - 7.5	DIANTHUS	6.0 - 7.5	SALVIA	6.0 - 7.5
CELERY	6.0 - 7.0	CHRISTMAS CACTUS	5.0 - 6.5	POTHOS	5.0 - 6.0	DOGWOOD	5.0 - 7.0	SCABIOSA	5.0 - 7.5
CHICORY	5.0 - 6.5	CINERARIA	5.5 - 7.0	PRAYER PLANT	5.0 - 6.0	EDELWEISS	6.5 - 7.5	SEDUM	6.0 - 7.5
CHINESE CABBAGE	6.0 - 7.5	CLERODENDRUM	5.0 - 6.0	PUNICA	5.5 - 6.5	ELAEAGNUS	5.0 - 7.5	SNAPDRAGON	5.5 - 7.0
CHIVES	6.0 - 7.0	CLIVIA	5.5 - 6.5	SANSERIERIA	4.5 - 7.0	ENKANTHUS	5.0 - 6.0	SNOWDROP	6.0 - 8.0
CORN - SWEET	5.5 - 7.0	COCKSCOMB	6.0 - 7.0	SAXIFRAGA	6.0 - 8.0	ERICA	4.5 - 6.0	SOAPWORT	6.0 - 7.5
CRESS	6.0 - 7.0	COFFEE PLANT	5.0 - 6.0	SCINDAPSUS	5.0 - 6.0	EUPHORBIA	6.0 - 7.0	SPEEDWELL	5.5 - 6.5
COURGETTES	5.5 - 7.0	COLEUS	6.0 - 7.0	SHRIMP PLANT	6.0 - 7.0	EVERLASTINGS	5.0 - 6.0	SPIRAEA	6.0 - 7.5
CUCUMBER	5.5 - 7.5	COLUMNIA	4.5 - 5.5	SPANISH BAYONET	6.0 - 7.5	FIRETHORN	6.0 - 8.0	SPRUCE	4.0 - 5.0
FENNEL	5.0 - 6.0	CORAL BERRY	5.5 - 7.5	SPIDER PLANT	6.0 - 7.5	FORGET-ME-NOTS	6.0 - 7.0	STOCK	6.0 - 7.5
GARLIC	5.5 - 7.5	CRASSULA	5.0 - 6.0	SUCCULENTS	5.0 - 6.5	FORSYTHIA	6.0 - 8.0	STONECROP	6.5 - 7.5
GINGER	6.0 - 8.0	CREEPING FIG	5.0 - 6.0	SYNOGONIUM	5.0 - 6.0	FOXGLOVE	6.0 - 7.5	SUMACK	5.0 - 6.5
HORSERADISH	6.0 - 7.0	CROTON	5.0 - 6.0	TOLMIEA	5.0 - 6.0	FRITILLARIA	6.0 - 7.5	SUNFLOWER	5.0 - 7.0
KALE	6.0 - 7.5	CROWN OF THORNS	6.0 - 7.5	TRADESCANTIA	5.0 - 6.0	FUCHSIA	5.5 - 7.5	SWEET PEA	6.0 - 7.5
KOHLRABI	6.0 - 7.5	CUPHEA	6.0 - 7.5	UMBRELLA TREE	5.0 - 7.5	GAILLARDIA	6.0 - 7.5	SWEET WILLIAM	6.0 - 7.5
LEEK	6.0 - 8.0	CYCLAMEN	6.0 - 7.0	VENUS FLYTRAP	4.0 - 5.0	GAZANIA	5.5 - 7.0	TAMARIX	6.5 - 8.0
LENTIL	5.5 - 7.0	CYPERUS	5.0 - 7.5	WEeping FIG	5.0 - 6.0	GENTIANA	5.0 - 7.5	TRILLIUM	5.0 - 6.5
LETTUCE	6.0 - 7.0	DIEFFENBACHIA	5.0 - 6.0	YUCCA	6.0 - 7.5	GEUM	6.0 - 7.5	TULIP	6.0 - 7.0
MARJORAM	6.0 - 8.0	DIPLADENIA	6.0 - 7.5	ZEBRINA	5.0 - 6.0	GLADIOILI	6.0 - 7.0	VIBERNUM	5.0 - 7.5
MARROW	6.0 - 7.5	DIZGOTHECA	6.0 - 7.5	FLOWERS, TREES AND SHRUBS		GLOBULARIA	5.5 - 7.0	VIOLA	5.5 - 6.5
MILLET	6.0 - 6.5	DRACAENA	5.0 - 6.0	ABELIA	6.0 - 8.0	GODETIA	6.0 - 7.5	VIRGINIA CREEPER	5.0 - 7.5
MINT	7.0 - 8.0	EASTER LILY	6.0 - 7.0	ACACIA	6.0 - 8.0	GOLDEN ROD	5.0 - 7.0	WALLFLOWER	5.5 - 7.5
MUSHROOM	6.5 - 7.5	ELEPHANT'S EAR	5.0 - 6.0	ACANTHUS	6.0 - 7.0	GYPSOPHILIA	6.0 - 7.5	WATER LILY	5.5 - 6.5
MUSTARD	6.0 - 7.5	EPISCIA	6.0 - 7.0	ACONITUM	5.0 - 6.0	HAWTHORN	6.0 - 7.0	WEIGELIA	6.0 - 7.5
OLIVE	5.5 - 6.5	EUONYMUS	6.0 - 8.0	ADONIS	6.0 - 8.0	HEATHER	4.0 - 6.0	WISTARIA	6.0 - 8.0
ONION	6.0 - 7.0	FERNs:		AGERATUM	6.0 - 7.5	HELIANTHUS	5.0 - 7.0	ZINNIA	5.5 - 7.5
PAPRIKA	7.0 - 8.5	BIRD'S NEST	5.0 - 5.5	AILANTHUS	6.0 - 7.5	HELLEBORUS	6.0 - 7.5	TURF AND ORNAMENTAL GRASSES	
PARSLEY	5.0 - 7.0	BOSTON	5.5 - 6.5	AJUGA	4.0 - 6.0	HOLLY	5.0 - 6.5	BAHAI	6.5 - 7.5
PARSNIP	5.5 - 7.5	BUTTON	6.0 - 8.0	ALTHEA	6.0 - 7.5	HOLLYHOCK	6.0 - 7.5	BENT	5.5 - 6.5
PEA	6.0 - 7.5	CHRISTMAS	6.0 - 7.5	ALYSSUM	6.0 - 7.5	HONEYSUCKLE	6.0 - 7.5	BERMUDA	6.0 - 7.0
PEANUT	5.0 - 6.5	CLOAK	6.0 - 7.5	AMARANTHUS	6.0 - 6.5	HYACINTH	6.5 - 7.5	CANADA BLUE	4.5 - 6.4
PECAN	4.0 - 6.0	FEATHER	5.5 - 6.5	ANCHUSA	6.0 - 7.5	HYDRANGEA (Blue)	4.0 - 5.0	CLOVER	6.0 - 7.0
PEPPER	5.5 - 7.0	HART'S TONGUE	7.0 - 8.0	ANDROSACE	5.0 - 6.0	HYDRANGEA (Pink)	6.0 - 7.0	KENTUCKY BLUE	6.0 - 7.5
PEPPERMINT	6.0 - 7.5	HOLLY	4.5 - 6.0	ANEMONE	6.0 - 7.5	HYDRANGEA (White)	6.5 - 8.0	MEADOW	6.0 - 7.5
PISTACHIO	5.0 - 6.0	MAIDENHAIR	6.0 - 8.0	ANTHYLLIS	5.0 - 6.0	HYPERICUM	5.5 - 7.0	PAMPAS	6.0 - 8.0
POTATO	4.5 - 6.0	RABBITS FOOT	6.0 - 7.5	ARBUSUS	4.0 - 6.0	IRIS	5.0 - 6.5	RED TOP	6.0 - 6.5
POTATO - SWEET	5.5 - 6.0	SPLEENWORT	6.0 - 7.5	ARENARIA	6.0 - 8.0	IVY	6.0 - 7.5	RYE	6.0 - 7.0
PUMPKIN	5.5 - 7.5	FIG	5.0 - 6.0	ARISTEA	6.0 - 7.5	JUNIPER	5.0 - 6.5	ST. AUGUSTINE	6.5 - 7.5
RADISH	6.0 - 7.0	FITTONIA	5.5 - 6.5	ARMERIA	6.0 - 7.5	KALMIA	4.5 - 5.0	TALL FESCUE	6.0 - 7.0
RICE	5.0 - 6.5	FREESIA	6.0 - 7.5	ARNICA	5.0 - 6.5	KERRIA	6.0 - 7.0	VELVET BENT	5.0 - 6.0
ROSEMARY	5.0 - 6.0	GARDENIA	5.0 - 6.0			LABURNUM	6.5 - 7.0	ZOYSIA	6.0 - 7.0

Soil Test Kit Questions and Answers

Question: I tested my soil, the pH test worked, but the rest of the results are clear. What's wrong?

1. An error has been made in the testing process.
2. Nutrient levels are too low for the test to indicate.
3. The capsules have absorbed too much moisture prior to being used. The reaction has already occurred within the capsule itself.

Question: My pH test result came out dark blue, there is no blue on the pH color chart.

1. The water being used to perform the test is alkaline. Recommend distilled water for the testing process.
2. The soil pH is higher than 7.5. The color results change from greens to blues to purples as the pH rises.

Question: I got results on all but the Nitrogen portion of the kit.

1. Nitrogen leaches out of the soil very quickly, especially in sandy soil.
2. The form of Nitrogen the kit tests for is Nitrate, the form used by plants. Nitrate is formed through the natural Nitrogen cycle within the soil. It is possible to have Nitrogen present in the soil in a non-testable form.

Question: I tested fertilizer with the kit and still got no reaction!

The kit detects only the form of the nutrient used by the plant. These nutrients must break down to the form tested for, through the natural bacterial action and decay processes in the soil. In most cases fertilizers will not test correctly.

Question: I fertilized my soil as recommended in your instructions and then re-tested. My readings didn't change.

Because the nutrients need to break down, we recommend two to four weeks between fertilizing and re-testing.

Question: My soil will not settle to the bottom in the soil/water solution I've mixed.

Although the directions read the soil and water should settle for at least 10 minutes before proceeding, there is no harm in letting the soil settle much longer. Suggest the consumer mix the soil and water the evening or even the day before testing. Some very fine clay soil will not settle. For these few homeowners, the kit will not work.

Question: The testing capsule didn't dissolve.

The capsules must be opened and the testing powder poured into the test tube. There isn't enough water present to dissolve the capsule.

Question: The color result I got doesn't match any on the color chart.

1. If the result is the same "color" but a different "shade" it's a matter of a judgment decision between the different nutrient levels.
2. The consumer may have inadvertently used the wrong capsule for the test in question.

In most cases we offer to send the consumer additional reagent capsules for re-testing. If an error was made in the first testing process, it's generally corrected the second time through.

HoldAll®
Decorative Plant Accessories

40 TESTS
DIRECTIONS INSIDE

SOIL TEST KIT

Tests Your Soil for a Healthy Garden

• pH • Nitrogen(N) • Phosphorus(P) • Potassium(K) •

WHY TEST YOUR SOIL?

Plants need food (nutrients) for healthy growth. Nitrogen, Phosphorus and Potash (N, P and K for short), play a vital role in plant growth just as vitamins, minerals, carbohydrates and protein do in our health.

HOW TO TEST YOUR SOIL

For the new and experienced soil testers alike, you will appreciate this easy, fast and fun way to achieve better growing results from your gardening efforts!

Everything is color-coded, including the tubes and capsules. All you do is take a sample of soil, mix with water, add powder from capsule, shake and watch the color develop. Then, note your test results. Fast, easy and it only takes a few minutes!

WHEN TO TEST YOUR SOIL

Soil should be tested periodically throughout the growing season, but it is especially recommended to test before planting in Spring and when preparing beds in Fall. And, if you feel your plants are not growing well, a soil test may help.

Included in the kit are:

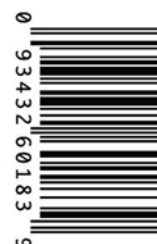
40 test capsules, 10 each for pH, N, P and K, Four (4) Color-coded Test Tubes, Test Tube Storage Dock, complete instructions for adjusting soil pH, fertilization guidelines and pH preference list for over 450 plants for the home, yard and garden.

Soil Test Kit Components
Complete Instruction
booklet Inside.



60183L

©2015 Panacea Products Corp.
2711 International St., Columbus, OH 43228
www.PanaceaProducts.com
Assembled in USA from
Foreign and Domestic parts



0 93432 60183 9

757860

APPENDIX D

Tables



Table 1
SOIL SAMPLE ANALYTICAL RESULTS
WPX Energy Permian, LLC
Ross Draw Unit #011
Eddy County, New Mexico

Sample I.D.	Sample Date	Sample Depth (feet bgs)	Benzene (mg/kg)	Total BTEX (mg/kg)	TPH GRO (mg/kg)	TPH DRO (mg/kg)	TPH ORO (mg/kg)	DRO+GRO (mg/kg)	Total TPH (mg/kg)	Chloride (mg/kg)
NMOCD Table I Closure Criteria for Soils Impacted by a Release (NMAC 19.15.29)			10	50	NE	NE	NE	1,000	2,500	20,000
Soil Cover Samples - Incident Number nAB1712951426										
SC01*	05/29/2025	0.25	<0.0250	<0.0500	<20.0	<25.0	<50.0	<25.0	<50.0	<100
SC02*	05/29/2025	0.25	<0.0250	<0.0500	<20.0	35.6	<50.0	35.6	35.6	<100
SC03*	05/29/2025	0.25	<0.0250	<0.0500	<20.0	<25.0	<50.0	<25.0	<50.0	121

Notes:

bgs: below ground surface

mg/kg: milligrams per kilogram

BTEX: Benzene, Toluene, Ethylbenzene, and Xylenes

GRO: Gasoline Range Organics

DRO: Diesel Range Organics

ORO: Oil Range Organics

TPH: Total Petroleum Hydrocarbon

NMOCD: New Mexico Oil Conservation Division

NMAC: New Mexico Administrative Code

Text in "grey" represents excavated soil samples

Concentrations in **bold** exceed the NMOCD Table I Closure Criteria and/or Reclamation Standard* for Soils Impacted by a Release

** *Soil sample was collected in the top 4 feet of areas to be immediately reclaimed following remediation pursuant to NMAC 19.15.17.13, if exceeding the reclamation concentration requirements of 600 mg/kg chloride and 100 mg/kg TPH.



Table 2
FIELD SCREENING RESULTS
WPX Energy Permian, LLC
Ross Draw Unit #011
Eddy County, New Mexico

Sample I.D.	Sample Date	Sample Depth (feet bgs)	Nitrogen	Potash	Phosphorous	PH (ppm)	Chloride (ppm)
Incident Number nAB1712951426							
SC01	05/29/2025	0.25	Very Low	Low	Low	7.50	<100
SC02	05/29/2025	0.25	Very Low	Low	Low	7.50	<100
SC03	05/29/2025	0.25	Very Low	Low	Low	7.50	121

Notes:

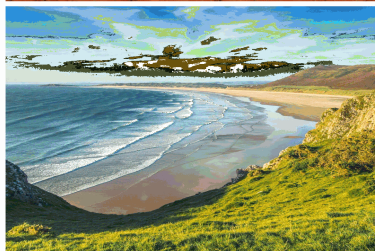
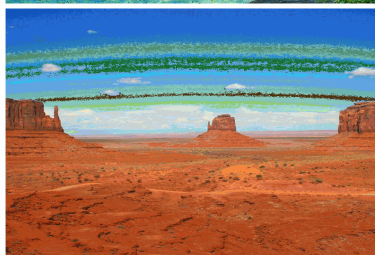
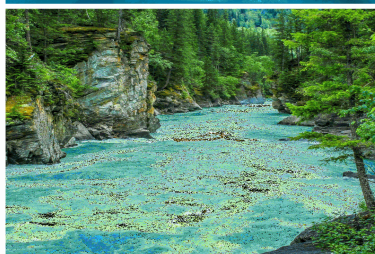
bgs: below ground surface

ppm: parts per million

APPENDIX E

Laboratory Analytical Reports & Chain-of-Custody Documentation

Report to:
Erick Herrera



envirotech

Practical Solutions for a Better Tomorrow

Analytical Report

Devon Energy - Carlsbad

Project Name: ROSS DRAW UNIT #011

Work Order: E505322

Job Number: 01058-0007

Received: 5/31/2025

Revision: 2

Report Reviewed By:

Walter Hinchman
Laboratory Director
6/4/25

5796 U.S. Hwy 64
Farmington, NM 87401

Phone: (505) 632-1881
Envirotech-inc.com



Envirotech Inc. certifies the test results meet all requirements of TNI unless noted otherwise.
Statement of Data Authenticity: Envirotech Inc. attests the data reported has not been altered in any way.
Partial or incomplete reproduction of this report is prohibited, unless approved by Envirotech Inc.
Envirotech Inc. holds the Utah TNI certification NM00979 for data reported.
Envirotech Inc. holds the Texas TNI certification T104704557 for data reported.

Date Reported: 6/4/25



Erick Herrera
6488 7 Rivers Hwy
Artesia, NM 88210

Project Name: ROSS DRAW UNIT #011
Workorder: E505322
Date Received: 5/31/2025 6:15:09AM

Erick Herrera,

Thank you for choosing Envirotech, Inc. as your analytical testing laboratory for the sample(s) received on, 5/31/2025 6:15:09AM, under the Project Name: ROSS DRAW UNIT #011.

The analytical test results summarized in this report with the Project Name: ROSS DRAW UNIT #011 apply to the individual samples collected, identified and submitted bearing the project name on the enclosed chain-of-custody. Subcontracted sample analyses not conducted by Envirotech, Inc., are attached in full as issued by the subcontract laboratory.

Please review the Chain-of-Custody (COC) and Sample Receipt Checklist (SRC) for any issues regarding sample receipt temperature, containers, preservation etc. To best understand your test results, review the entire report summarizing your sample data and the associated quality control batch data.

All reported data in this analytical report were analyzed according to the referenced method(s) and are in compliance with the latest NELAC/TNI standards, unless otherwise noted. Samples or analytical quality control parameters not meeting specific QC criteria are qualified with a data flag. Data flag definitions are located in the Notes and Definitions section of this analytical report.

If you have any questions concerning this report, please feel free to contact Envirotech, Inc.

Respectfully,

Walter Hinchman
Laboratory Director
Office: 505-632-1881
Cell: 775-287-1762
whinchman@envirotech-inc.com

Raina Schwanz
Laboratory Administrator
Office: 505-632-1881
rainaschwanz@envirotech-inc.com

Field Offices:

Southern New Mexico Area

Lynn Jarboe
Laboratory Technical Representative
Office: 505-421-LABS(5227)
Cell: 505-320-4759
ljjarboe@envirotech-inc.com

Michelle Gonzales
Client Representative
Office: 505-421-LABS(5227)
Cell: 505-947-8222
mgonzales@envirotech-inc.com

Envirotech Web Address: www.envirotech-inc.com

Table of Contents

Title Page	1
Cover Page	2
Table of Contents	3
Sample Summary	4
Sample Data	5
SC01 0.25'	5
SC02 0.25'	6
SC03 0.25'	7
SC04 0.25'	8
SC05 0.25'	9
SC06 0.25'	10
QC Summary Data	11
QC - Volatile Organics by EPA 8021B	11
QC - Nonhalogenated Organics by EPA 8015D - GRO	12
QC - Nonhalogenated Organics by EPA 8015D - DRO/ORO	13
QC - Anions by EPA 300.0/9056A	14
Definitions and Notes	15
Chain of Custody etc.	16

Sample Summary

Devon Energy - Carlsbad	Project Name:	ROSS DRAW UNIT #011	Reported:
6488 7 Rivers Hwy	Project Number:	01058-0007	
Artesia NM, 88210	Project Manager:	Erick Herrera	06/04/25 15:50

Client Sample ID	Lab Sample ID	Matrix	Sampled	Received	Container
SC01 0.25'	E505322-01A	Soil	05/29/25	05/31/25	Glass Jar, 2 oz.
SC02 0.25'	E505322-02A	Soil	05/29/25	05/31/25	Glass Jar, 2 oz.
SC03 0.25'	E505322-03A	Soil	05/29/25	05/31/25	Glass Jar, 2 oz.
SC04 0.25'	E505322-04A	Soil	05/29/25	05/31/25	Glass Jar, 2 oz.
SC05 0.25'	E505322-05A	Soil	05/29/25	05/31/25	Glass Jar, 2 oz.
SC06 0.25'	E505322-06A	Soil	05/29/25	05/31/25	Glass Jar, 2 oz.



Sample Data

Devon Energy - Carlsbad	Project Name:	ROSS DRAW UNIT #011	Reported: 6/4/2025 3:50:47PM
6488 7 Rivers Hwy	Project Number:	01058-0007	
Artesia NM, 88210	Project Manager:	Erick Herrera	

SC01 0.25'

E505322-01

Analyte	Result	Reporting Limit	Dilution	Prepared	Analyzed	Notes
Volatile Organics by EPA 8021B	mg/kg	mg/kg	Analyst: IY		Batch: 2522094	
Benzene	ND	0.0250	1	06/01/25	06/01/25	
Ethylbenzene	ND	0.0250	1	06/01/25	06/01/25	
Toluene	ND	0.0250	1	06/01/25	06/01/25	
o-Xylene	ND	0.0250	1	06/01/25	06/01/25	
p,m-Xylene	ND	0.0500	1	06/01/25	06/01/25	
Total Xylenes	ND	0.0250	1	06/01/25	06/01/25	
<i>Surrogate: 4-Bromochlorobenzene-PID</i>		104 %	70-130	06/01/25	06/01/25	
Nonhalogenated Organics by EPA 8015D - GRO	mg/kg	mg/kg	Analyst: IY		Batch: 2522094	
Gasoline Range Organics (C6-C10)	ND	20.0	1	06/01/25	06/01/25	
<i>Surrogate: 1-Chloro-4-fluorobenzene-FID</i>		96.1 %	70-130	06/01/25	06/01/25	
Nonhalogenated Organics by EPA 8015D - DRO/ORO	mg/kg	mg/kg	Analyst: KH		Batch: 2523058	
Diesel Range Organics (C10-C28)	ND	25.0	1	06/03/25	06/03/25	
Oil Range Organics (C28-C36)	ND	50.0	1	06/03/25	06/03/25	
<i>Surrogate: n-Nonane</i>		101 %	61-141	06/03/25	06/03/25	
Anions by EPA 300.0/9056A	mg/kg	mg/kg	Analyst: IY		Batch: 2523032	
Chloride	ND	100	5	06/02/25	06/03/25	



Sample Data

Devon Energy - Carlsbad
6488 7 Rivers Hwy
Artesia NM, 88210

Project Name: ROSS DRAW UNIT #011
Project Number: 01058-0007
Project Manager: Erick Herrera

Reported:
6/4/2025 3:50:47PM

SC02 0.25'

E505322-02

Analyte	Result	Reporting Limit	Dilution	Prepared	Analyzed	Notes
Volatile Organics by EPA 8021B						
	mg/kg	mg/kg		Analyst: IY		Batch: 2522094
Benzene	ND	0.0250	1	06/01/25	06/01/25	
Ethylbenzene	ND	0.0250	1	06/01/25	06/01/25	
Toluene	ND	0.0250	1	06/01/25	06/01/25	
o-Xylene	ND	0.0250	1	06/01/25	06/01/25	
p,m-Xylene	ND	0.0500	1	06/01/25	06/01/25	
Total Xylenes	ND	0.0250	1	06/01/25	06/01/25	
<i>Surrogate: 4-Bromochlorobenzene-PID</i>						
		104 %	70-130	06/01/25	06/01/25	
Nonhalogenated Organics by EPA 8015D - GRO						
	mg/kg	mg/kg		Analyst: IY		Batch: 2522094
Gasoline Range Organics (C6-C10)	ND	20.0	1	06/01/25	06/01/25	
<i>Surrogate: 1-Chloro-4-fluorobenzene-FID</i>						
		95.8 %	70-130	06/01/25	06/01/25	
Nonhalogenated Organics by EPA 8015D - DRO/ORO						
	mg/kg	mg/kg		Analyst: KH		Batch: 2523058
Diesel Range Organics (C10-C28)	35.6	25.0	1	06/03/25	06/03/25	
Oil Range Organics (C28-C36)	ND	50.0	1	06/03/25	06/03/25	
<i>Surrogate: n-Nonane</i>						
		102 %	61-141	06/03/25	06/03/25	
Anions by EPA 300.0/9056A						
	mg/kg	mg/kg		Analyst: IY		Batch: 2523032
Chloride	ND	100	5	06/02/25	06/03/25	



Sample Data

Devon Energy - Carlsbad
6488 7 Rivers Hwy
Artesia NM, 88210

Project Name: ROSS DRAW UNIT #011
Project Number: 01058-0007
Project Manager: Erick Herrera

Reported:
6/4/2025 3:50:47PM

SC03 0.25'

E505322-03

Analyte	Result	Reporting Limit	Dilution	Prepared	Analyzed	Notes
Volatile Organics by EPA 8021B						
	mg/kg	mg/kg		Analyst: IY		Batch: 2522094
Benzene	ND	0.0250	1	06/01/25	06/01/25	
Ethylbenzene	ND	0.0250	1	06/01/25	06/01/25	
Toluene	ND	0.0250	1	06/01/25	06/01/25	
o-Xylene	ND	0.0250	1	06/01/25	06/01/25	
p,m-Xylene	ND	0.0500	1	06/01/25	06/01/25	
Total Xylenes	ND	0.0250	1	06/01/25	06/01/25	
<i>Surrogate: 4-Bromochlorobenzene-PID</i>						
		104 %	70-130	06/01/25	06/01/25	
Nonhalogenated Organics by EPA 8015D - GRO						
	mg/kg	mg/kg		Analyst: IY		Batch: 2522094
Gasoline Range Organics (C6-C10)	ND	20.0	1	06/01/25	06/01/25	
<i>Surrogate: 1-Chloro-4-fluorobenzene-FID</i>						
		96.9 %	70-130	06/01/25	06/01/25	
Nonhalogenated Organics by EPA 8015D - DRO/ORO						
	mg/kg	mg/kg		Analyst: KH		Batch: 2523058
Diesel Range Organics (C10-C28)	ND	25.0	1	06/03/25	06/03/25	
Oil Range Organics (C28-C36)	ND	50.0	1	06/03/25	06/03/25	
<i>Surrogate: n-Nonane</i>						
		96.7 %	61-141	06/03/25	06/03/25	
Anions by EPA 300.0/9056A						
	mg/kg	mg/kg		Analyst: IY		Batch: 2523032
Chloride	121	100	5	06/02/25	06/03/25	



Sample Data

Devon Energy - Carlsbad
6488 7 Rivers Hwy
Artesia NM, 88210

Project Name: ROSS DRAW UNIT #011
Project Number: 01058-0007
Project Manager: Erick Herrera

Reported:
6/4/2025 3:50:47PM

SC04 0.25'

E505322-04

Analyte	Result	Reporting Limit	Dilution	Prepared	Analyzed	Notes
Volatile Organics by EPA 8021B						
	mg/kg	mg/kg		Analyst: IY		Batch: 2522094
Benzene	ND	0.0250	1	06/01/25	06/01/25	
Ethylbenzene	ND	0.0250	1	06/01/25	06/01/25	
Toluene	ND	0.0250	1	06/01/25	06/01/25	
o-Xylene	ND	0.0250	1	06/01/25	06/01/25	
p,m-Xylene	ND	0.0500	1	06/01/25	06/01/25	
Total Xylenes	ND	0.0250	1	06/01/25	06/01/25	
<i>Surrogate: 4-Bromochlorobenzene-PID</i>						
		104 %	70-130	06/01/25	06/01/25	
Nonhalogenated Organics by EPA 8015D - GRO						
	mg/kg	mg/kg		Analyst: IY		Batch: 2522094
Gasoline Range Organics (C6-C10)	ND	20.0	1	06/01/25	06/01/25	
<i>Surrogate: 1-Chloro-4-fluorobenzene-FID</i>						
		96.2 %	70-130	06/01/25	06/01/25	
Nonhalogenated Organics by EPA 8015D - DRO/ORO						
	mg/kg	mg/kg		Analyst: KH		Batch: 2523058
Diesel Range Organics (C10-C28)	27.0	25.0	1	06/03/25	06/03/25	
Oil Range Organics (C28-C36)	ND	50.0	1	06/03/25	06/03/25	
<i>Surrogate: n-Nonane</i>						
		99.1 %	61-141	06/03/25	06/03/25	
Anions by EPA 300.0/9056A						
	mg/kg	mg/kg		Analyst: IY		Batch: 2523032
Chloride	ND	100	5	06/02/25	06/03/25	



Sample Data

Devon Energy - Carlsbad
6488 7 Rivers Hwy
Artesia NM, 88210

Project Name: ROSS DRAW UNIT #011
Project Number: 01058-0007
Project Manager: Erick Herrera

Reported:
6/4/2025 3:50:47PM

SC05 0.25'

E505322-05

Analyte	Result	Reporting Limit	Dilution	Prepared	Analyzed	Notes
Volatile Organics by EPA 8021B						
	mg/kg	mg/kg		Analyst: IY		Batch: 2522094
Benzene	ND	0.0250	1	06/01/25	06/01/25	
Ethylbenzene	ND	0.0250	1	06/01/25	06/01/25	
Toluene	ND	0.0250	1	06/01/25	06/01/25	
o-Xylene	ND	0.0250	1	06/01/25	06/01/25	
p,m-Xylene	ND	0.0500	1	06/01/25	06/01/25	
Total Xylenes	ND	0.0250	1	06/01/25	06/01/25	
<i>Surrogate: 4-Bromochlorobenzene-PID</i>						
		104 %	70-130	06/01/25	06/01/25	
Nonhalogenated Organics by EPA 8015D - GRO						
	mg/kg	mg/kg		Analyst: IY		Batch: 2522094
Gasoline Range Organics (C6-C10)	ND	20.0	1	06/01/25	06/01/25	
<i>Surrogate: 1-Chloro-4-fluorobenzene-FID</i>						
		96.5 %	70-130	06/01/25	06/01/25	
Nonhalogenated Organics by EPA 8015D - DRO/ORO						
	mg/kg	mg/kg		Analyst: KH		Batch: 2523058
Diesel Range Organics (C10-C28)	44.0	25.0	1	06/03/25	06/03/25	
Oil Range Organics (C28-C36)	ND	50.0	1	06/03/25	06/03/25	
<i>Surrogate: n-Nonane</i>						
		100 %	61-141	06/03/25	06/03/25	
Anions by EPA 300.0/9056A						
	mg/kg	mg/kg		Analyst: IY		Batch: 2523032
Chloride	ND	100	5	06/02/25	06/03/25	



Sample Data

Devon Energy - Carlsbad
6488 7 Rivers Hwy
Artesia NM, 88210

Project Name: ROSS DRAW UNIT #011
Project Number: 01058-0007
Project Manager: Erick Herrera

Reported:
6/4/2025 3:50:47PM

SC06 0.25'

E505322-06

Analyte	Result	Reporting Limit	Dilution	Prepared	Analyzed	Notes
Volatile Organics by EPA 8021B	mg/kg	mg/kg	Analyst: IY		Batch: 2522094	
Benzene	ND	0.0250	1	06/01/25	06/01/25	
Ethylbenzene	ND	0.0250	1	06/01/25	06/01/25	
Toluene	ND	0.0250	1	06/01/25	06/01/25	
o-Xylene	ND	0.0250	1	06/01/25	06/01/25	
p,m-Xylene	ND	0.0500	1	06/01/25	06/01/25	
Total Xylenes	ND	0.0250	1	06/01/25	06/01/25	
<i>Surrogate: 4-Bromochlorobenzene-PID</i>		104 %	70-130	06/01/25	06/01/25	
Nonhalogenated Organics by EPA 8015D - GRO	mg/kg	mg/kg	Analyst: IY		Batch: 2522094	
Gasoline Range Organics (C6-C10)	ND	20.0	1	06/01/25	06/01/25	
<i>Surrogate: 1-Chloro-4-fluorobenzene-FID</i>		95.5 %	70-130	06/01/25	06/01/25	
Nonhalogenated Organics by EPA 8015D - DRO/ORO	mg/kg	mg/kg	Analyst: KH		Batch: 2523058	
Diesel Range Organics (C10-C28)	ND	25.0	1	06/03/25	06/03/25	
Oil Range Organics (C28-C36)	ND	50.0	1	06/03/25	06/03/25	
<i>Surrogate: n-Nonane</i>		100 %	61-141	06/03/25	06/03/25	
Anions by EPA 300.0/9056A	mg/kg	mg/kg	Analyst: IY		Batch: 2523032	
Chloride	ND	100	5	06/02/25	06/03/25	



QC Summary Data

Devon Energy - Carlsbad	Project Name:	ROSS DRAW UNIT #011	Reported:
6488 7 Rivers Hwy	Project Number:	01058-0007	
Artesia NM, 88210	Project Manager:	Erick Herrera	6/4/2025 3:50:47PM

Volatile Organics by EPA 8021B

Analyst: IY

Analyte	Result mg/kg	Reporting Limit mg/kg	Spike Level mg/kg	Source Result mg/kg	Rec %	Rec Limits %	RPD %	RPD Limit %	Notes
---------	-----------------	-----------------------------	-------------------------	---------------------------	----------	--------------------	----------	-------------------	-------

Blank (2522094-BLK1)

Prepared: 06/01/25 Analyzed: 06/01/25

Benzene	ND	0.0250							
Ethylbenzene	ND	0.0250							
Toluene	ND	0.0250							
o-Xylene	ND	0.0250							
p,m-Xylene	ND	0.0500							
Total Xylenes	ND	0.0250							
Surrogate: 4-Bromochlorobenzene-PID	8.38		8.00		105	70-130			

LCS (2522094-BS1)

Prepared: 06/01/25 Analyzed: 06/01/25

Benzene	5.52	0.0250	5.00		110	70-130			
Ethylbenzene	5.41	0.0250	5.00		108	70-130			
Toluene	5.48	0.0250	5.00		110	70-130			
o-Xylene	5.32	0.0250	5.00		106	70-130			
p,m-Xylene	10.9	0.0500	10.0		109	70-130			
Total Xylenes	16.2	0.0250	15.0		108	70-130			
Surrogate: 4-Bromochlorobenzene-PID	8.21		8.00		103	70-130			

Matrix Spike (2522094-MS1)

Source: E505323-03

Prepared: 06/01/25 Analyzed: 06/01/25

Benzene	5.56	0.0250	5.00	ND	111	70-130			
Ethylbenzene	5.43	0.0250	5.00	ND	109	70-130			
Toluene	5.51	0.0250	5.00	ND	110	70-130			
o-Xylene	5.35	0.0250	5.00	ND	107	70-130			
p,m-Xylene	10.9	0.0500	10.0	ND	109	70-130			
Total Xylenes	16.3	0.0250	15.0	ND	109	70-130			
Surrogate: 4-Bromochlorobenzene-PID	8.35		8.00		104	70-130			

Matrix Spike Dup (2522094-MSD1)

Source: E505323-03

Prepared: 06/01/25 Analyzed: 06/01/25

Benzene	5.49	0.0250	5.00	ND	110	70-130	1.25	27	
Ethylbenzene	5.37	0.0250	5.00	ND	107	70-130	1.04	26	
Toluene	5.44	0.0250	5.00	ND	109	70-130	1.26	20	
o-Xylene	5.30	0.0250	5.00	ND	106	70-130	0.940	25	
p,m-Xylene	10.8	0.0500	10.0	ND	108	70-130	1.17	23	
Total Xylenes	16.1	0.0250	15.0	ND	107	70-130	1.09	26	
Surrogate: 4-Bromochlorobenzene-PID	8.42		8.00		105	70-130			



QC Summary Data

Devon Energy - Carlsbad	Project Name:	ROSS DRAW UNIT #011	Reported:
6488 7 Rivers Hwy	Project Number:	01058-0007	
Artesia NM, 88210	Project Manager:	Erick Herrera	6/4/2025 3:50:47PM

Nonhalogenated Organics by EPA 8015D - GRO

Analyst: IY

Analyte	Result mg/kg	Reporting Limit mg/kg	Spike Level mg/kg	Source Result mg/kg	Rec %	Rec Limits %	RPD %	RPD Limit %	Notes
---------	-----------------	-----------------------------	-------------------------	---------------------------	----------	--------------------	----------	-------------------	-------

Blank (2522094-BLK1) Prepared: 06/01/25 Analyzed: 06/01/25

Gasoline Range Organics (C6-C10)	ND	20.0							
Surrogate: 1-Chloro-4-fluorobenzene-FID	7.70		8.00		96.2	70-130			

LCS (2522094-BS2) Prepared: 06/01/25 Analyzed: 06/01/25

Gasoline Range Organics (C6-C10)	48.6	20.0	50.0		97.2	70-130			
Surrogate: 1-Chloro-4-fluorobenzene-FID	7.91		8.00		98.8	70-130			

Matrix Spike (2522094-MS2) Source: E505323-03 Prepared: 06/01/25 Analyzed: 06/01/25

Gasoline Range Organics (C6-C10)	48.4	20.0	50.0	ND	96.9	70-130			
Surrogate: 1-Chloro-4-fluorobenzene-FID	7.80		8.00		97.5	70-130			

Matrix Spike Dup (2522094-MSD2) Source: E505323-03 Prepared: 06/01/25 Analyzed: 06/01/25

Gasoline Range Organics (C6-C10)	48.3	20.0	50.0	ND	96.6	70-130	0.225	20	
Surrogate: 1-Chloro-4-fluorobenzene-FID	7.85		8.00		98.2	70-130			



QC Summary Data

Devon Energy - Carlsbad	Project Name:	ROSS DRAW UNIT #011	Reported:
6488 7 Rivers Hwy	Project Number:	01058-0007	
Artesia NM, 88210	Project Manager:	Erick Herrera	6/4/2025 3:50:47PM

Nonhalogenated Organics by EPA 8015D - DRO/ORO

Analyst: NV

Analyte	Result mg/kg	Reporting Limit mg/kg	Spike Level mg/kg	Source Result mg/kg	Rec %	Rec Limits %	RPD %	RPD Limit %	Notes
---------	-----------------	-----------------------------	-------------------------	---------------------------	----------	--------------------	----------	-------------------	-------

Blank (2523058-BLK1)

Prepared: 06/03/25 Analyzed: 06/03/25

Diesel Range Organics (C10-C28)	ND	25.0							
Oil Range Organics (C28-C36)	ND	50.0							
Surrogate: <i>n</i> -Nonane	51.6		50.0		103	61-141			

LCS (2523058-BS1)

Prepared: 06/03/25 Analyzed: 06/03/25

Diesel Range Organics (C10-C28)	266	25.0	250		106	66-144			
Surrogate: <i>n</i> -Nonane	52.0		50.0		104	61-141			

Matrix Spike (2523058-MS1)

Source: E506005-02

Prepared: 06/03/25 Analyzed: 06/03/25

Diesel Range Organics (C10-C28)	270	25.0	250	ND	108	56-156			
Surrogate: <i>n</i> -Nonane	52.5		50.0		105	61-141			

Matrix Spike Dup (2523058-MSD1)

Source: E506005-02

Prepared: 06/03/25 Analyzed: 06/03/25

Diesel Range Organics (C10-C28)	265	25.0	250	ND	106	56-156	1.87	20	
Surrogate: <i>n</i> -Nonane	51.0		50.0		102	61-141			



QC Summary Data

Devon Energy - Carlsbad	Project Name:	ROSS DRAW UNIT #011	Reported:
6488 7 Rivers Hwy	Project Number:	01058-0007	
Artesia NM, 88210	Project Manager:	Erick Herrera	6/4/2025 3:50:47PM

Anions by EPA 300.0/9056A

Analyst: IY

Analyte	Result	Reporting Limit	Spike Level	Source Result	Rec	Rec Limits	RPD	RPD Limit	Notes
	mg/kg	mg/kg	mg/kg	mg/kg	%	%	%	%	

Blank (2523032-BLK1)					Prepared: 06/02/25 Analyzed: 06/03/25				
Chloride	ND	20.0							
LCS (2523032-BS1)					Prepared: 06/02/25 Analyzed: 06/03/25				
Chloride	257	20.0	250		103	90-110			
Matrix Spike (2523032-MS1)					Source: E505319-06		Prepared: 06/02/25 Analyzed: 06/03/25		
Chloride	256	20.0	250	ND	102	80-120			
Matrix Spike Dup (2523032-MSD1)					Source: E505319-06		Prepared: 06/02/25 Analyzed: 06/03/25		
Chloride	256	20.0	250	ND	103	80-120	0.267	20	

QC Summary Report Comment:
Calculations are based off of the raw (non-rounded) data. However, for reporting purposes all QC data is rounded to three significant figures.
Therefore, hand calculated values may differ slightly.



Definitions and Notes

Devon Energy - Carlsbad	Project Name:	ROSS DRAW UNIT #011	
6488 7 Rivers Hwy	Project Number:	01058-0007	Reported:
Artesia NM, 88210	Project Manager:	Erick Herrera	06/04/25 15:50

- ND Analyte NOT DETECTED at or above the reporting limit
- NR Not Reported
- RPD Relative Percent Difference
- DNI Did Not Ignite
- DNR Did not react with the addition of acid or base.

Note (1): Methods marked with ** are non-accredited methods.

Note (2): Soil data is reported on an "as received" weight basis, unless reported otherwise.





Chain of Custody

Page 1 of 1

Client Information				Invoice Information		Lab Use Only		TAT		State										
Client: Devon Energy Production Company, LP				Company: Devon Energy Production Co.		Lab WO#	Job Number	1D	2D	3D	Std	NM	CO	UT	TX					
Project: ROSS DRAW UNIT #011				Address: 5315 Buena Vista Dr.		E505322	010570007				x									
Project Manager: Erick Herrera				City, State, Zip: Carlsbad, NM, 88220																
Address: 13000 W County Rd 100				Phone: 575-885-7502																
City, State, Zip: Odessa, TX, 79765				Email: jim.raley@devn.com																
Phone: 432-305-6415				Misc: WO: 44-155117-AL RNM; PN: 18134;																
Email: NMTXGeoGroup@etechnv.com				IN: nAB1712951426-nAB1728553778-NS																
Sample Information						Analysis and Method								EPA Program						
Time Sampled	Date Sampled	Matrix	No. of Containers	Sample ID	Depth	Lab Number	DRO/GRO by 8015	GRO/DRO by 8015	BTEX by 8021	VOC by 8260	Chloride 300.0	ICED 1005 - TX	RCRA 8 Metals	BGDOC - NM	BGDOC - TX	SDWA	CWA	RCRA		
																	Compliance	Y	or	N
																	PWSID #			
																	Sample Temp			Remarks
10:20	5/29/2025	S	1	SC01	0.25'	1								X			3.6			changed
10:25	5/29/2025	S	1	SC02	0.25'	2								X			4.0			PO 3IN
10:30	5/29/2025	S	1	SC03	0.25'	3								X			3.8			per client HB.
13:30	5/29/2025	S	1	SC04	0.25'	4								X			3.4			NS 6-2-25
13:35	5/29/2025	S	1	SC05	0.25'	5								X			3.5			
13:40	5/29/2025	S	1	SC06	0.25'	6								X			4.1			
Additional Instructions: PO: Z1153713 IN: AHMP 141224 1998																				
I, (field sampler), attest to the validity and authenticity of this sample. I am aware that tampering with or intentionally mislabeling the sample location, date or time of collection is considered fraud and may be grounds for legal action.																				
Sampled by: Haleigh Blume																				
Relinquished by: (Signature)		Date		Time		Received by: (Signature)		Date		Time		Samples requiring thermal preservation must be received on ice the day they are sampled or received packed on ice at a temp above 0 but less than 5°C on subsequent days. Lab Use Only Received on ice: (Y) N								
Relinquished by: (Signature)		Date		Time		Received by: (Signature)		Date		Time										
Relinquished by: (Signature)		Date		Time		Received by: (Signature)		Date		Time										
Relinquished by: (Signature)		Date		Time		Received by: (Signature)		Date		Time										
Relinquished by: (Signature)		Date		Time		Received by: (Signature)		Date		Time										
Sample Matrix: S - Soil, Sd - Solid, Sg - Sludge, A - Aqueous, O - Other																				
Container Type: g - glass, p - poly/plastic, ag - amber glass, v - VOA																				
Note: Samples are discarded 14 days after results are reported unless other arrangements are made. Hazardous samples will be returned to client or disposed of at the client expense. The report for the analysis of the above samples is applicable only to those samples received by the laboratory with this COC. The liability of the laboratory is limited to the amount paid for on the report.																				

Page 17 of 18

Envirotech Analytical Laboratory

Printed: 6/2/2025 10:52:58AM

Sample Receipt Checklist (SRC)

Instructions: Please take note of any NO checkmarks.

If we receive no response concerning these items within 24 hours of the date of this notice, all the samples will be analyzed as requested.

Client:	Devon Energy - Carlsbad	Date Received:	05/31/25 06:15	Work Order ID:	E505322
Phone:	(575) 748-0176	Date Logged In:	05/30/25 15:50	Logged In By:	Caitlin Mars
Email:		Due Date:	06/06/25 17:00 (4 day TAT)		

Chain of Custody (COC)

1. Does the sample ID match the COC? Yes
2. Does the number of samples per sampling site location match the COC? Yes
3. Were samples dropped off by client or carrier? Yes
4. Was the COC complete, i.e., signatures, dates/times, requested analyses? Yes
5. Were all samples received within holding time? Yes

Note: Analysis, such as pH which should be conducted in the field, i.e., 15 minute hold time, are not included in this discussion.

Carrier: CourierComments/ResolutionSample Turn Around Time (TAT)

6. Did the COC indicate standard TAT, or Expedited TAT? Yes

Sample Cooler

7. Was a sample cooler received? Yes
8. If yes, was cooler received in good condition? Yes
9. Was the sample(s) received intact, i.e., not broken? Yes
10. Were custody/security seals present? No
11. If yes, were custody/security seals intact? NA
12. Was the sample received on ice? Yes

Note: Thermal preservation is not required, if samples are received within 15 minutes of sampling

13. See COC for individual sample temps. Samples outside of 0°C-6°C will be recorded in comments.

Sample Container

14. Are aqueous VOC samples present? No
15. Are VOC samples collected in VOA Vials? NA
16. Is the head space less than 6-8 mm (pea sized or less)? NA
17. Was a trip blank (TB) included for VOC analyses? NA
18. Are non-VOC samples collected in the correct containers? Yes
19. Is the appropriate volume/weight or number of sample containers collected? Yes

Field Label

20. Were field sample labels filled out with the minimum information:
 - Sample ID? Yes
 - Date/Time Collected? Yes
 - Collectors name? No

Sample Preservation

21. Does the COC or field labels indicate the samples were preserved? No
22. Are sample(s) correctly preserved? NA
24. Is lab filtration required and/or requested for dissolved metals? No

Multiphase Sample Matrix

26. Does the sample have more than one phase, i.e., multiphase? No
27. If yes, does the COC specify which phase(s) is to be analyzed? NA

Subcontract Laboratory

28. Are samples required to get sent to a subcontract laboratory? No
29. Was a subcontract laboratory specified by the client and if so who? NA Subcontract Lab: NA

Client Instruction

Signature of client authorizing changes to the COC or sample disposition.

Date



envirotech Inc.

APPENDIX F

Photographic Logs



PHOTOGRAPHIC LOG
WPX Energy Permian, LLC
 Ross Draw Unit #011
 Incident Number: nAB1712951426

2.022885° / -103.867249° (±14.4ft)
 8ft (±13.1ft)
 -84
 Bearing: 224° S44W 3982mils True (±11°)
 Angle: -23.8°
 Elevation: +01.1°



Photograph 1 **Date: 05/29/2025**
 Description: Southwestern view of soil cover sampling activities.

2.022617° / -103.867409° (±9.2ft)
 8ft (±9.8ft)
 -84
 Bearing: 269° S89W 4782mils True (±11°)
 Angle: -24.5°
 Elevation: -03.2°



Photograph 2 **Date: 05/29/2025**
 Description: Southwestern view of soil cover sampling activities.

2.022537° / -103.866743° (±11.6ft)
 8ft (±9.8ft)
 -84
 Bearing: 267° S87W 4747mils True (±11°)
 Angle: -56.0°
 Elevation: +17.0°



Photograph 3 **Date: 05/29/2025**
 Description: View of nutrient sample testing of SC01.

2.022524° / -103.866748° (±27.1ft)
 8ft (±12.7ft)
 -84
 Bearing: 254° S74W 4516mils True (±11°)
 Angle: -55.1°
 Elevation: +03.9°



Photograph 4 **Date: 05/29/2025**
 Description: View of nutrient sample testing of SC03.

APPENDIX G

Correspondence & Notifications

Sante Fe Main Office
Phone: (505) 476-3441

General Information
Phone: (505) 629-6116

Online Phone Directory
<https://www.emnrd.nm.gov/ocd/contact-us>

State of New Mexico
Energy, Minerals and Natural Resources
Oil Conservation Division
1220 S. St Francis Dr.
Santa Fe, NM 87505

QUESTIONS

Action 466797

QUESTIONS

Operator: WPX Energy Permian, LLC Devon Energy - Regulatory Oklahoma City, OK 73102	OGRID: 246289
	Action Number: 466797
	Action Type: [NOTIFY] Notification Of Sampling (C-141N)

QUESTIONS

Prerequisites	
Incident ID (n#)	nAB1712951426
Incident Name	NAB1712951426 ROSS DRAW UNIT #011 @ 30-015-24307
Incident Type	Oil Release
Incident Status	Remediation Closure Report Approved
Incident Well	[30-015-24307] ROSS DRAW UNIT #011

Location of Release Source	
Site Name	ROSS DRAW UNIT #011
Date Release Discovered	04/20/2017
Surface Owner	Federal

Sampling Event General Information	
<i>Please answer all the questions in this group.</i>	
What is the sampling surface area in square feet	6,427
What is the estimated number of samples that will be gathered	10
Sampling date pursuant to Subparagraph (a) of Paragraph (1) of Subsection D of 19.15.29.12 NMAC	05/29/2025
Time sampling will commence	07:00 AM
Please provide any information necessary for observers to contact samplers	Please contact Erick Herrera at 432-305-6416 with any questions.
Please provide any information necessary for navigation to sampling site	From the intersection State Line Rd and Whitehorn Rd, head east on State Line Rd for approximately 2.6 mi, continue straight for 0.6 mi, turn right for 0.8mi to arrive at the provided GPS coordinates (32.0224991,-103.8669281)

Sante Fe Main Office
Phone: (505) 476-3441

General Information
Phone: (505) 629-6116

Online Phone Directory
<https://www.emnrd.nm.gov/ocd/contact-us>

State of New Mexico
Energy, Minerals and Natural Resources
Oil Conservation Division
1220 S. St Francis Dr.
Santa Fe, NM 87505

CONDITIONS

Action 466797

CONDITIONS

Operator: WPX Energy Permian, LLC Devon Energy - Regulatory Oklahoma City, OK 73102	OGRID: 246289
	Action Number: 466797
	Action Type: [NOTIFY] Notification Of Sampling (C-141N)

CONDITIONS

Created By	Condition	Condition Date
jralej	Failure to notify the OCD of sampling events including any changes in date/time per the requirements of 19.15.29.12.D.(1).(a) NMAC, may result in the remediation closure samples not being accepted.	5/23/2025

Sante Fe Main Office
Phone: (505) 476-3441

General Information
Phone: (505) 629-6116

Online Phone Directory
<https://www.emnrd.nm.gov/ocd/contact-us>

State of New Mexico
Energy, Minerals and Natural Resources
Oil Conservation Division
1220 S. St Francis Dr.
Santa Fe, NM 87505

QUESTIONS

Action 527658

QUESTIONS

Operator: WPX Energy Permian, LLC Devon Energy - Regulatory Oklahoma City, OK 73102	OGRID: 246289
	Action Number: 527658
	Action Type: [C-141] Reclamation Report C-141 (C-141-v-Reclamation)

QUESTIONS

Prerequisites	
Incident ID (n#)	nAB1712951426
Incident Name	NAB1712951426 ROSS DRAW UNIT #011 @ 30-015-24307
Incident Type	Oil Release
Incident Status	Reclamation Report Received
Incident Well	[30-015-24307] ROSS DRAW UNIT #011

Location of Release Source	
<i>Please answer all the questions in this group.</i>	
Site Name	ROSS DRAW UNIT #011
Date Release Discovered	04/20/2017
Surface Owner	Federal

Incident Details	
<i>Please answer all the questions in this group.</i>	
Incident Type	Oil Release
Did this release result in a fire or is the result of a fire	No
Did this release result in any injuries	No
Has this release reached or does it have a reasonable probability of reaching a watercourse	No
Has this release endangered or does it have a reasonable probability of endangering public health	No
Has this release substantially damaged or will it substantially damage property or the environment	No
Is this release of a volume that is or may with reasonable probability be detrimental to fresh water	No

Nature and Volume of Release	
<i>Material(s) released, please answer all that apply below. Any calculations or specific justifications for the volumes provided should be attached to the follow-up C-141 submission.</i>	
Crude Oil Released (bbls) Details	Cause: Human Error Other (Specify) Crude Oil Released: 50 BBL Recovered: 40 BBL Lost: 10 BBL.
Produced Water Released (bbls) Details	Not answered.
Is the concentration of chloride in the produced water >10,000 mg/l	No
Condensate Released (bbls) Details	Not answered.
Natural Gas Vented (Mcf) Details	Not answered.
Natural Gas Flared (Mcf) Details	Not answered.
Other Released Details	Not answered.
Are there additional details for the questions above (i.e. any answer containing Other, Specify, Unknown, and/or Fire, or any negative lost amounts)	Not answered.

Sante Fe Main Office
Phone: (505) 476-3441

General Information
Phone: (505) 629-6116

Online Phone Directory
<https://www.emnrd.nm.gov/ocd/contact-us>

State of New Mexico
Energy, Minerals and Natural Resources
Oil Conservation Division
1220 S. St Francis Dr.
Santa Fe, NM 87505

QUESTIONS, Page 2

Action 527658

QUESTIONS (continued)

Operator: WPX Energy Permian, LLC Devon Energy - Regulatory Oklahoma City, OK 73102	OGRID: 246289
	Action Number: 527658
	Action Type: [C-141] Reclamation Report C-141 (C-141-v-Reclamation)

QUESTIONS

Nature and Volume of Release (continued)	
Is this a gas only submission (i.e. only significant Mcf values reported)	No, according to supplied volumes this does not appear to be a "gas only" report.
Was this a major release as defined by Subsection A of 19.15.29.7 NMAC	Yes
Reasons why this would be considered a submission for a notification of a major release	From paragraph A. "Major release" determine using: (1) an unauthorized release of a volume, excluding gases, of 25 barrels or more.
With the implementation of the 19.15.27 NMAC (05/25/2021), venting and/or flaring of natural gas (i.e. gas only) are to be submitted on the C-129 form.	

Initial Response

The responsible party must undertake the following actions immediately unless they could create a safety hazard that would result in injury.

The source of the release has been stopped	True
The impacted area has been secured to protect human health and the environment	True
Released materials have been contained via the use of berms or dikes, absorbent pads, or other containment devices	True
All free liquids and recoverable materials have been removed and managed appropriately	True
If all the actions described above have not been undertaken, explain why	Not answered.

Per Paragraph (4) of Subsection B of 19.15.29.8 NMAC the responsible party may commence remediation immediately after discovery of a release. If remediation has begun, please prepare and attach a narrative of actions to date in the follow-up C-141 submission. If remedial efforts have been successfully completed or if the release occurred within a lined containment area (see Subparagraph (a) of Paragraph (5) of Subsection A of 19.15.29.11 NMAC), please prepare and attach all information needed for closure evaluation in the follow-up C-141 submission.

I hereby certify that the information given above is true and complete to the best of my knowledge and understand that pursuant to OCD rules and regulations all operators are required to report and/or file certain release notifications and perform corrective actions for releases which may endanger public health or the environment. The acceptance of a C-141 report by the OCD does not relieve the operator of liability should their operations have failed to adequately investigate and remediate contamination that pose a threat to groundwater, surface water, human health or the environment. In addition, OCD acceptance of a C-141 report does not relieve the operator of responsibility for compliance with any other federal, state, or local laws and/or regulations.

I hereby agree and sign off to the above statement	Name: James Raley Title: EHS Professional Email: jim.raley@dv.com Date: 11/20/2025
--	---

Sante Fe Main Office
Phone: (505) 476-3441

General Information
Phone: (505) 629-6116

Online Phone Directory
<https://www.emnrd.nm.gov/ocd/contact-us>

State of New Mexico
Energy, Minerals and Natural Resources
Oil Conservation Division
1220 S. St Francis Dr.
Santa Fe, NM 87505

QUESTIONS, Page 3

Action 527658

QUESTIONS (continued)

Operator: WPX Energy Permian, LLC Devon Energy - Regulatory Oklahoma City, OK 73102	OGRID: 246289
	Action Number: 527658
	Action Type: [C-141] Reclamation Report C-141 (C-141-v-Reclamation)

QUESTIONS**Site Characterization**

Please answer all the questions in this group (only required when seeking remediation plan approval and beyond). This information must be provided to the appropriate district office no later than 90 days after the release discovery date.

What is the shallowest depth to groundwater beneath the area affected by the release in feet below ground surface (ft bgs)	Between 100 and 500 (ft.)
What method was used to determine the depth to ground water	NM OSE iWaters Database Search
Did this release impact groundwater or surface water	No
What is the minimum distance, between the closest lateral extents of the release and the following surface areas:	
A continuously flowing watercourse or any other significant watercourse	Between 1000 (ft.) and ½ (mi.)
Any lakebed, sinkhole, or playa lake (measured from the ordinary high-water mark)	Greater than 5 (mi.)
An occupied permanent residence, school, hospital, institution, or church	Greater than 5 (mi.)
A spring or a private domestic fresh water well used by less than five households for domestic or stock watering purposes	Between 1000 (ft.) and ½ (mi.)
Any other fresh water well or spring	Between 1 and 5 (mi.)
Incorporated municipal boundaries or a defined municipal fresh water well field	Greater than 5 (mi.)
A wetland	Between 1000 (ft.) and ½ (mi.)
A subsurface mine	Greater than 5 (mi.)
An (non-karst) unstable area	Between 1 and 5 (mi.)
Categorize the risk of this well / site being in a karst geology	Medium
A 100-year floodplain	Between 1 and 5 (mi.)
Did the release impact areas not on an exploration, development, production, or storage site	Yes

Remediation Plan

Please answer all the questions that apply or are indicated. This information must be provided to the appropriate district office no later than 90 days after the release discovery date.

Requesting a remediation plan approval with this submission	Yes
<i>Attach a comprehensive report demonstrating the lateral and vertical extents of soil contamination associated with the release have been determined, pursuant to 19.15.29.11 NMAC and 19.15.29.13 NMAC.</i>	
Have the lateral and vertical extents of contamination been fully delineated	Yes
Was this release entirely contained within a lined containment area	No

Soil Contamination Sampling: (Provide the highest observable value for each, in milligrams per kilograms.)

Chloride (EPA 300.0 or SM4500 Cl B)	5220
TPH (GRO+DRO+MRO) (EPA SW-846 Method 8015M)	58.3
GRO+DRO (EPA SW-846 Method 8015M)	58.3
BTEX (EPA SW-846 Method 8021B or 8260B)	0
Benzene (EPA SW-846 Method 8021B or 8260B)	0

Per Subsection B of 19.15.29.11 NMAC unless the site characterization report includes completed efforts at remediation, the report must include a proposed remediation plan in accordance with 19.15.29.12 NMAC, which includes the anticipated timelines for beginning and completing the remediation.

On what estimated date will the remediation commence	10/30/2023
On what date will (or did) the final sampling or liner inspection occur	10/30/2023
On what date will (or was) the remediation complete(d)	10/30/2023
What is the estimated surface area (in square feet) that will be reclaimed	0
What is the estimated volume (in cubic yards) that will be reclaimed	0
What is the estimated surface area (in square feet) that will be remediated	0
What is the estimated volume (in cubic yards) that will be remediated	0

These estimated dates and measurements are recognized to be the best guess or calculation at the time of submission and may (be) change(d) over time as more remediation efforts are completed.

The OCD recognizes that proposed remediation measures may have to be minimally adjusted in accordance with the physical realities encountered during remediation. If the responsible party has any need to significantly deviate from the remediation plan proposed, then it should consult with the division to determine if another remediation plan submission is required.

Sante Fe Main Office
Phone: (505) 476-3441

General Information
Phone: (505) 629-6116

Online Phone Directory
<https://www.emnrd.nm.gov/ocd/contact-us>

State of New Mexico
Energy, Minerals and Natural Resources
Oil Conservation Division
1220 S. St Francis Dr.
Santa Fe, NM 87505

QUESTIONS, Page 4

Action 527658

QUESTIONS (continued)

Operator: WPX Energy Permian, LLC Devon Energy - Regulatory Oklahoma City, OK 73102	OGRID: 246289
	Action Number: 527658
	Action Type: [C-141] Reclamation Report C-141 (C-141-v-Reclamation)

QUESTIONS

Remediation Plan (continued)	
<i>Please answer all the questions that apply or are indicated. This information must be provided to the appropriate district office no later than 90 days after the release discovery date.</i>	
This remediation will (or is expected to) utilize the following processes to remediate / reduce contaminants:	
<i>(Select all answers below that apply.)</i>	
(Ex Situ) Excavation and off-site disposal (i.e. dig and haul, hydrovac, etc.)	Yes
Which OCD approved facility will be used for off-site disposal	<i>Not answered.</i>
OR which OCD approved well (API) will be used for off-site disposal	<i>Not answered.</i>
OR is the off-site disposal site, to be used, out-of-state	Yes
In which state is the disposal taking place	Texas
What is the name of the out-of-state facility	R360
OR is the off-site disposal site, to be used, an NMED facility	No
(Ex Situ) Excavation and on-site remediation (i.e. On-Site Land Farms)	No
(In Situ) Soil Vapor Extraction	No
(In Situ) Chemical processing (i.e. Soil Shredding, Potassium Permanganate, etc.)	No
(In Situ) Biological processing (i.e. Microbes / Fertilizer, etc.)	No
(In Situ) Physical processing (i.e. Soil Washing, Gypsum, Disking, etc.)	No
Ground Water Abatement pursuant to 19.15.30 NMAC	No
OTHER (Non-listed remedial process)	No
<i>Per Subsection B of 19.15.29.11 NMAC unless the site characterization report includes completed efforts at remediation, the report must include a proposed remediation plan in accordance with 19.15.29.12 NMAC, which includes the anticipated timelines for beginning and completing the remediation.</i>	
I hereby certify that the information given above is true and complete to the best of my knowledge and understand that pursuant to OCD rules and regulations all operators are required to report and/or file certain release notifications and perform corrective actions for releases which may endanger public health or the environment. The acceptance of a C-141 report by the OCD does not relieve the operator of liability should their operations have failed to adequately investigate and remediate contamination that pose a threat to groundwater, surface water, human health or the environment. In addition, OCD acceptance of a C-141 report does not relieve the operator of responsibility for compliance with any other federal, state, or local laws and/or regulations.	
I hereby agree and sign off to the above statement	Name: James Raley Title: EHS Professional Email: jim.raley@dmv.com Date: 11/20/2025
<i>The OCD recognizes that proposed remediation measures may have to be minimally adjusted in accordance with the physical realities encountered during remediation. If the responsible party has any need to significantly deviate from the remediation plan proposed, then it should consult with the division to determine if another remediation plan submission is required.</i>	

Sante Fe Main Office
Phone: (505) 476-3441

General Information
Phone: (505) 629-6116

Online Phone Directory
<https://www.emnrd.nm.gov/ocd/contact-us>

State of New Mexico
Energy, Minerals and Natural Resources
Oil Conservation Division
1220 S. St Francis Dr.
Santa Fe, NM 87505

QUESTIONS, Page 5

Action 527658

QUESTIONS (continued)

Operator: WPX Energy Permian, LLC Devon Energy - Regulatory Oklahoma City, OK 73102	OGRID: 246289
	Action Number: 527658
	Action Type: [C-141] Reclamation Report C-141 (C-141-v-Reclamation)

QUESTIONS

Deferral Requests Only	
Only answer the questions in this group if seeking a deferral upon approval this submission. Each of the following items must be confirmed as part of any request for deferral of remediation.	
Requesting a deferral of the remediation closure due date with the approval of this submission	No

Sante Fe Main Office
Phone: (505) 476-3441

General Information
Phone: (505) 629-6116

Online Phone Directory
<https://www.emnrd.nm.gov/ocd/contact-us>

State of New Mexico
Energy, Minerals and Natural Resources
Oil Conservation Division
1220 S. St Francis Dr.
Santa Fe, NM 87505

QUESTIONS, Page 6

Action 527658

QUESTIONS (continued)

Operator: WPX Energy Permian, LLC Devon Energy - Regulatory Oklahoma City, OK 73102	OGRID: 246289
	Action Number: 527658
	Action Type: [C-141] Reclamation Report C-141 (C-141-v-Reclamation)

QUESTIONS

Sampling Event Information	
Last sampling notification (C-141N) recorded	466797
Sampling date pursuant to Subparagraph (a) of Paragraph (1) of Subsection D of 19.15.29.12 NMAC	05/29/2025
What was the (estimated) number of samples that were to be gathered	10
What was the sampling surface area in square feet	6427

Remediation Closure Request

Only answer the questions in this group if seeking remediation closure for this release because all remediation steps have been completed.

Requesting a remediation closure approval with this submission	Yes
Have the lateral and vertical extents of contamination been fully delineated	Yes
Was this release entirely contained within a lined containment area	No
All areas reasonably needed for production or subsequent drilling operations have been stabilized, returned to the sites existing grade, and have a soil cover that prevents ponding of water, minimizing dust and erosion	Yes
What was the total surface area (in square feet) remediated	38500
What was the total volume (cubic yards) remediated	4380
All areas not reasonably needed for production or subsequent drilling operations have been reclaimed to contain a minimum of four feet of non-waste contain earthen material with concentrations less than 600 mg/kg chlorides, 100 mg/kg TPH, 50 mg/kg BTEX, and 10 mg/kg Benzene	Yes
What was the total surface area (in square feet) reclaimed	38500
What was the total volume (in cubic yards) reclaimed	4380
Summarize any additional remediation activities not included by answers (above)	Remediation area has been restored with clean backfill material and will be re-seeded with BLM Seed Mixture #4, for Gypsum Sites following the appropriate BLM re-seeding guidelines for seed to sqft area ratio.

The responsible party must attach information demonstrating they have complied with all applicable closure requirements and any conditions or directives of the OCD. This demonstration should be in the form of a comprehensive report (in .pdf format) including a scaled site map, sampling diagrams, relevant field notes, photographs of any excavation prior to backfilling, laboratory data including chain of custody documents of final sampling, and a narrative of the remedial activities. Refer to 19.15.29.12 NMAC.

I hereby certify that the information given above is true and complete to the best of my knowledge and understand that pursuant to OCD rules and regulations all operators are required to report and/or file certain release notifications and perform corrective actions for releases which may endanger public health or the environment. The acceptance of a C-141 report by the OCD does not relieve the operator of liability should their operations have failed to adequately investigate and remediate contamination that pose a threat to groundwater, surface water, human health or the environment. In addition, OCD acceptance of a C-141 report does not relieve the operator of responsibility for compliance with any other federal, state, or local laws and/or regulations. The responsible party acknowledges they must substantially restore, reclaim, and re-vegetate the impacted surface area to the conditions that existed prior to the release or their final land use in accordance with 19.15.29.13 NMAC including notification to the OCD when reclamation and re-vegetation are complete.

I hereby agree and sign off to the above statement	Name: James Raley Title: EHS Professional Email: jim.raley@dmv.com Date: 11/20/2025
--	--

Sante Fe Main Office
Phone: (505) 476-3441

General Information
Phone: (505) 629-6116

Online Phone Directory
<https://www.emnrd.nm.gov/ocd/contact-us>

State of New Mexico
Energy, Minerals and Natural Resources
Oil Conservation Division
1220 S. St Francis Dr.
Santa Fe, NM 87505

QUESTIONS, Page 7

Action 527658

QUESTIONS (continued)

Operator: WPX Energy Permian, LLC Devon Energy - Regulatory Oklahoma City, OK 73102	OGRID: 246289
	Action Number: 527658
	Action Type: [C-141] Reclamation Report C-141 (C-141-v-Reclamation)

QUESTIONS

Reclamation Report	
<i>Only answer the questions in this group if all reclamation steps have been completed.</i>	
Requesting a reclamation approval with this submission	Yes
What was the total reclamation surface area (in square feet) for this site	38500
What was the total volume of replacement material (in cubic yards) for this site	4380
<i>Per Paragraph (1) of Subsection D of 19.15.29.13 NMAC the reclamation must contain a minimum of four feet of non-waste containing, uncontaminated, earthen material with chloride concentrations less than 600 mg/kg as analyzed by EPA Method 300.0, or other test methods approved by the division. The soil cover must include a top layer, which is either the background thickness of topsoil or one foot of suitable material to establish vegetation at the site, whichever is greater.</i>	
Is the soil top layer complete and is it suitable material to establish vegetation	Yes
On what (estimated) date will (or was) the reseeded commence(d)	03/02/2026
Summarize any additional reclamation activities not included by answers (above)	Remediation area has been restored with clean backfill material and will be re-seeded with BLM Seed Mixture #4, for Gypsum Sites following the appropriate BLM re-seeding guidelines for seed to sqft area ratio.
<i>The responsible party must attach information demonstrating they have complied with all applicable reclamation requirements and any conditions or directives of the OCD. This demonstration should be in the form of attachments (in .pdf format) including a scaled site map, any proposed reseeding plans or relevant field notes, photographs of reclaimed area, and a narrative of the reclamation activities. Refer to 19.15.29.13 NMAC.</i>	
I hereby certify that the information given above is true and complete to the best of my knowledge and understand that pursuant to OCD rules and regulations all operators are required to report and/or file certain release notifications and perform corrective actions for releases which may endanger public health or the environment. The acceptance of a C-141 report by the OCD does not relieve the operator of liability should their operations have failed to adequately investigate and remediate contamination that pose a threat to groundwater, surface water, human health or the environment. In addition, OCD acceptance of a C-141 report does not relieve the operator of responsibility for compliance with any other federal, state, or local laws and/or regulations. The responsible party acknowledges they must substantially restore, reclaim, and re-vegetate the impacted surface area to the conditions that existed prior to the release or their final land use in accordance with 19.15.29.13 NMAC including notification to the OCD when reclamation and re-vegetation are complete.	
I hereby agree and sign off to the above statement	Name: James Raley Title: EHS Professional Email: jim.raley@dmv.com Date: 11/20/2025

Sante Fe Main Office
Phone: (505) 476-3441

General Information
Phone: (505) 629-6116

Online Phone Directory
<https://www.emnrd.nm.gov/ocd/contact-us>

State of New Mexico
Energy, Minerals and Natural Resources
Oil Conservation Division
1220 S. St Francis Dr.
Santa Fe, NM 87505

QUESTIONS, Page 8

Action 527658

QUESTIONS (continued)

Operator: WPX Energy Permian, LLC Devon Energy - Regulatory Oklahoma City, OK 73102	OGRID: 246289
	Action Number: 527658
	Action Type: [C-141] Reclamation Report C-141 (C-141-v-Reclamation)

QUESTIONS

Revegetation Report	
<i>Only answer the questions in this group if all surface restoration, reclamation and re-vegetation obligations have been satisfied.</i>	
Requesting a restoration complete approval with this submission	No
<i>Per Paragraph (4) of Subsection (D) of 19.15.29.13 NMAC for any major or minor release containing liquids, the responsible party must notify the division when reclamation and re-vegetation are complete.</i>	

Sante Fe Main Office
Phone: (505) 476-3441

General Information
Phone: (505) 629-6116

Online Phone Directory
<https://www.emnrd.nm.gov/ocd/contact-us>

State of New Mexico
Energy, Minerals and Natural Resources
Oil Conservation Division
1220 S. St Francis Dr.
Santa Fe, NM 87505

CONDITIONS

Action 527658

CONDITIONS

Operator: WPX Energy Permian, LLC Devon Energy - Regulatory Oklahoma City, OK 73102	OGRID: 246289
	Action Number: 527658
	Action Type: [C-141] Reclamation Report C-141 (C-141-v-Reclamation)

CONDITIONS

Created By	Condition	Condition Date
michael.buchanan	The reclamation report has been approved pursuant to 19.15.29.13 E. NMAC. The acceptance of this report by the OCD does not relieve the operator of liability should their operations have failed to adequately investigate and remediate contamination that pose a threat to groundwater, surface water, human health or the environment; or if the location fails to revegetate properly. In addition, the OCD approval does not relieve the responsible party of compliance with any other federal, state, or local laws and/or regulations.	11/21/2025