



LINER INSPECTION AND CLOSURE REPORT

PREPARED FOR:
DEVON ENERGY PRODUCTION, LP.

PREPARED BY:
PIMA ENVIRONMENTAL SERVICES, LLC.

October 29, 2025
PIMA ENVIRONMENTAL SERVICES, LLC.
5614 N LOVINGTON HWY, HOBBS, NM 88240



October 29, 2025

NMOCD District 2
811 S First Street
Artesia, NM 88210

RE: Liner Inspection and Closure Report

LOCATION: Boundary Raider 6 CTB 3

FACILITY ID: fAPP2129928099

GPS: 32.33829329, -103.712399

INCIDENT LOCATION: L-06-T23S-R32E

COUNTY: Lea

NMOCD REF. NO. NAPP2520944309

Pima Environmental Services, LLC. (Pima) has been contracted by Devon Energy Production Company, LP (Devon) to perform a liner inspection and prepare this closure report for a produced water release that occurred at the Boundary Raider 6 CTB 3 (Boundary Raider). This incident was assigned Incident ID: NAPP2520944309, by the New Mexico Oil Conservation Division (NMOCD).

RELEASE INFORMATION

NAPP2520944309: On July 26, 2025, vict clamp failed on dump line allowing approximately 14 bbls of produced water to be released to lined secondary containment. A vacuum truck was able to recover 14 bbls of standing fluid.

A Site Map can be found in Figure 4.

SITE CHARACTERIZATION

The Boundary Raider is located approximately twenty-two (22) miles northeast of Malaga, NM. This spill site is in Unit L, Section 06, Township 23S, Range 32E, Latitude 32.33829329 Longitude -103.712399, Lea County, NM. Figure 1 references a Location Map.

Based on the well water data from the New Mexico Office of the State Engineer water well (C-04951-POD 1), the depth to the nearest groundwater in this vicinity measures 110 feet below grade surface (BGS), positioned 0.06 of a mile away from the Boundary Raider, drilled on April 04, 2025. Conversely, as per the United States Geological Survey well water data (USGS321809103481801 23S.31E.17.31141), the nearest groundwater depth in this region is recorded at 129 feet BGS, situated approximately 5.99 miles away from the Boundary Raider, with the last gauge conducted in 2012. For detailed references to water surveys and the precise locations of water wells, please refer to Appendix A, inclusive of the relevant maps.

SITE ASSESSMENT, AND LINER INSPECTION

On August 29, 2025, Devon personnel mobilized equipment to the site to perform pressure washing of the liner and containment. A vacuum truck accompanied the crew to recover the power washing fluids.



Pima Environmental Services, LLC
5614 N Lovington Hwy, Hobbs, NM 88240
575-964-7740 | www.pimaoil.com

Boundary Raider 6 CTB 3 | NAPP2520944309

Page 1 | 2

On September 5, 2025, after submitting the 48-hour liner inspection notification application ID: 502273 to the OCD, Pima Environmental conducted a liner inspection at the Boundary Raider. Pima concluded that the liner and containment maintained their integrity and successfully retained the fluids. The 48-hour notification and liner inspection form can be found in Appendix C. Photographic documentation can be found in Appendix D.

After careful review, Pima requests that this incident ID: NAPP2520944309, be closed. Devon has complied with the applicable closure requirements.

Should you have any questions or need additional information, please feel free to contact:

Devon Energy Production – Jim Raley at 575-689-7597 or jim.raley@devon.com.

Pima Environmental – DelRae Geller at 806-724-5391 or delrae@pimaoil.com.

ATTACHMENTS

FIGURES:

- 1- Location Map
- 2- Topographic Map
- 3- Karst Map
- 4- Site Map

APPENDICES:

Appendix A – Water Surveys and Water Related Maps

Appendix B – Soil Survey, Geological Data

Appendix C – 48-Hour Sampling Notification, Liner Inspection Form

Appendix D – Photographic Documentation



Pima Environmental Services, LLC
5614 N Lovington Hwy, Hobbs, NM 88240
575-964-7740 | www.pimaoil.com

Boundary Raider 6 CTB 3 | NAPP2520944309

Page 2 | 2

FIGURES

- 1- Location Map
- 2- Topographic Map
- 3- Karst Map
- 4- Site Map





Pima Environmental Services, LLC
5614 N Lovington Hwy, Hobbs, NM 88240
575-964-7740 | www.pimaoil.com

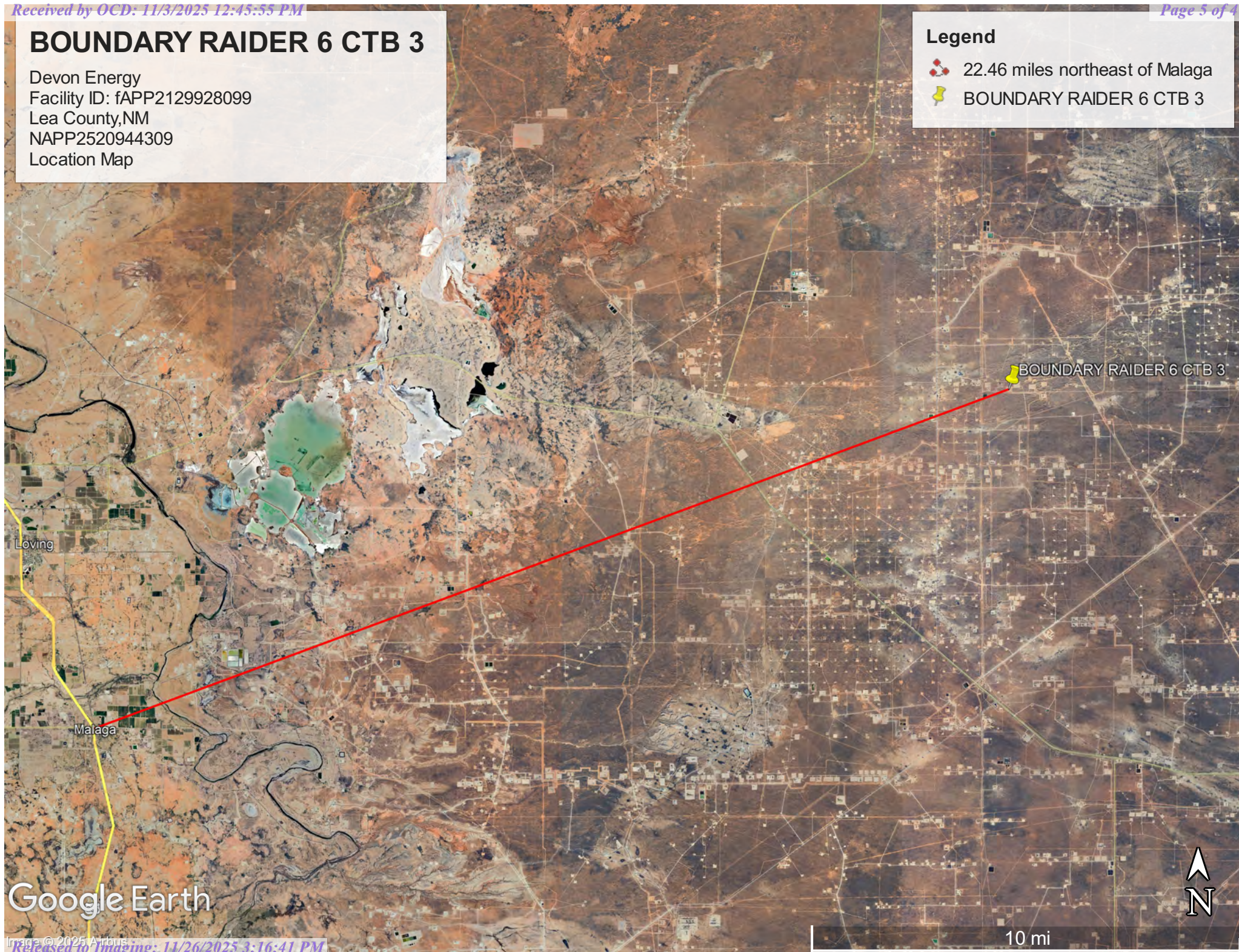
DEVON ENERGY PRODUCTION, LP.

BOUNDARY RAIDER 6 CTB 3

Devon Energy
Facility ID: fAPP2129928099
Lea County, NM
NAPP2520944309
Location Map

Legend

-  22.46 miles northeast of Malaga
-  BOUNDARY RAIDER 6 CTB 3



Google Earth

10 mi

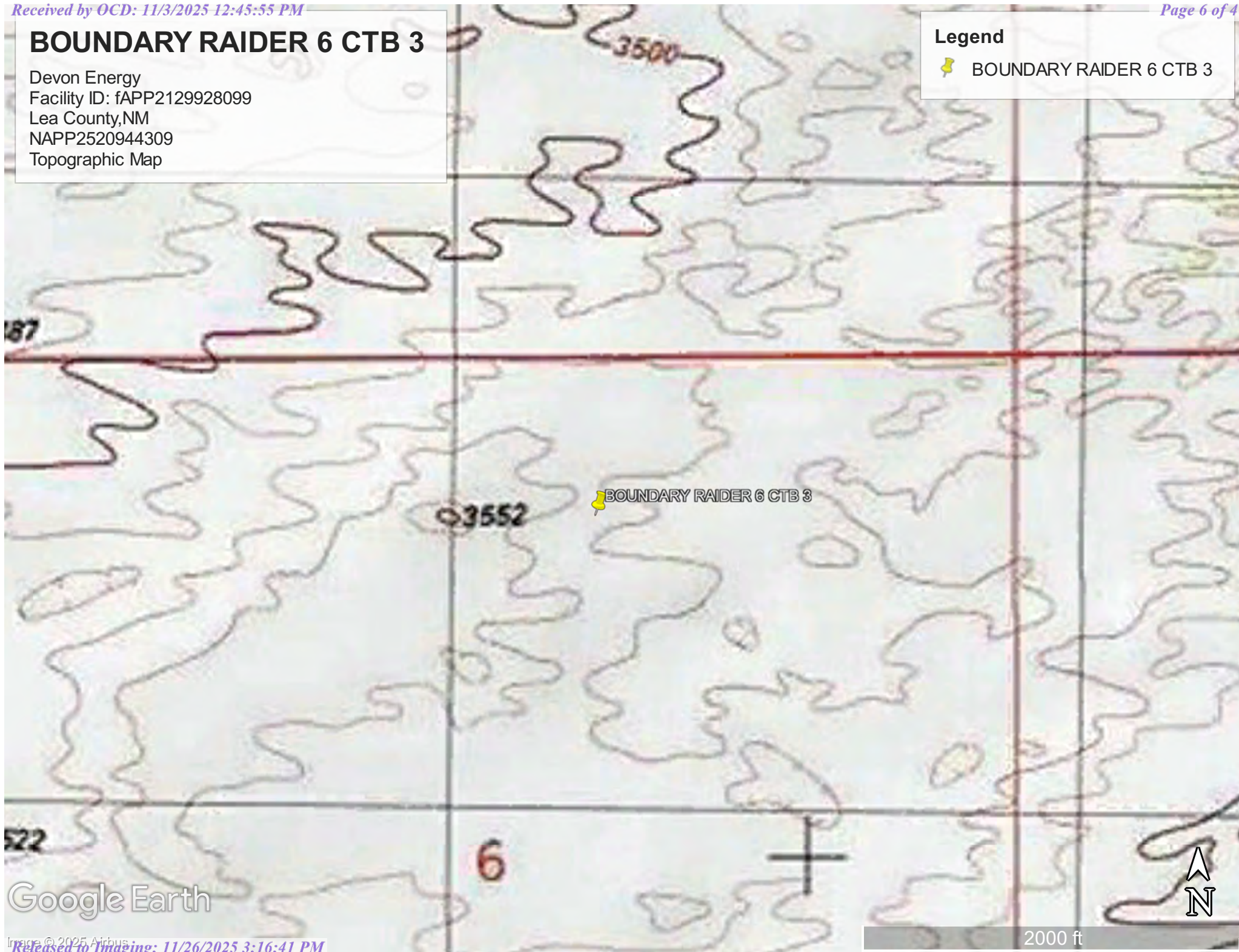


BOUNDARY RAIDER 6 CTB 3

Devon Energy
Facility ID: fAPP2129928099
Lea County, NM
NAPP2520944309
Topographic Map

Legend


 BOUNDARY RAIDER 6 CTB 3




BOUNDARY RAIDER 6 CTB 3

Devon Energy
Facility ID: fAPP2129928099
Lea County, NM
NAPP2520944309
Karst Map

Legend

 BOUNDARY RAIDER 6 CTB 3

 BOUNDARY RAIDER 6 CTB 3

Google Earth






7 mi

BOUNDARY RAIDER 6 CTB 3

Devon Energy
Facility ID: fAPP2129928099
Lea County, NM
NAPP2520944309
Site Map

Legend

-  Boundary Raider 6 CTB 3
-  Liner Inspection Area

 Boundary Raider 6 CTB 3



APPENDIX A

Water Surveys & Water Related Maps




Pima Environmental Services, LLC
5614 N Lovington Hwy, Hobbs, NM 88240
575-964-7740 | www.pimaoil.com

DEVON ENERGY PRODUCTION, LP.

Point of Diversion Summary

quarters are 1=NW 2=NE 3=SW 4=SE
quarters are smallest to largest

NAD83 UTM in meters

Well Tag	POD Nbr	Q64	Q16	Q4	Sec	Tws	Rng	X	Y	Map
NA	C 04951 POD1	SW	NW	NE	06	23S	32E	621111.1	3578594.6	

* UTM location was derived from PLSS - see Help

Driller License:	1188	Driller Company:	SCARBOROUGH DRILLING INC.	
Driller Name:	JOHN SCARBOROUGH			
Drill Start Date:	2025-04-24	Drill Finish Date:	2025-04-24	Plug Date:
Log File Date:	2025-06-02	PCW Rcv Date:		Source:
Pump Type:		Pipe Discharge Size:		Estimated Yield:
Casing Size:	5.75	Depth Well:	110	Depth Water:

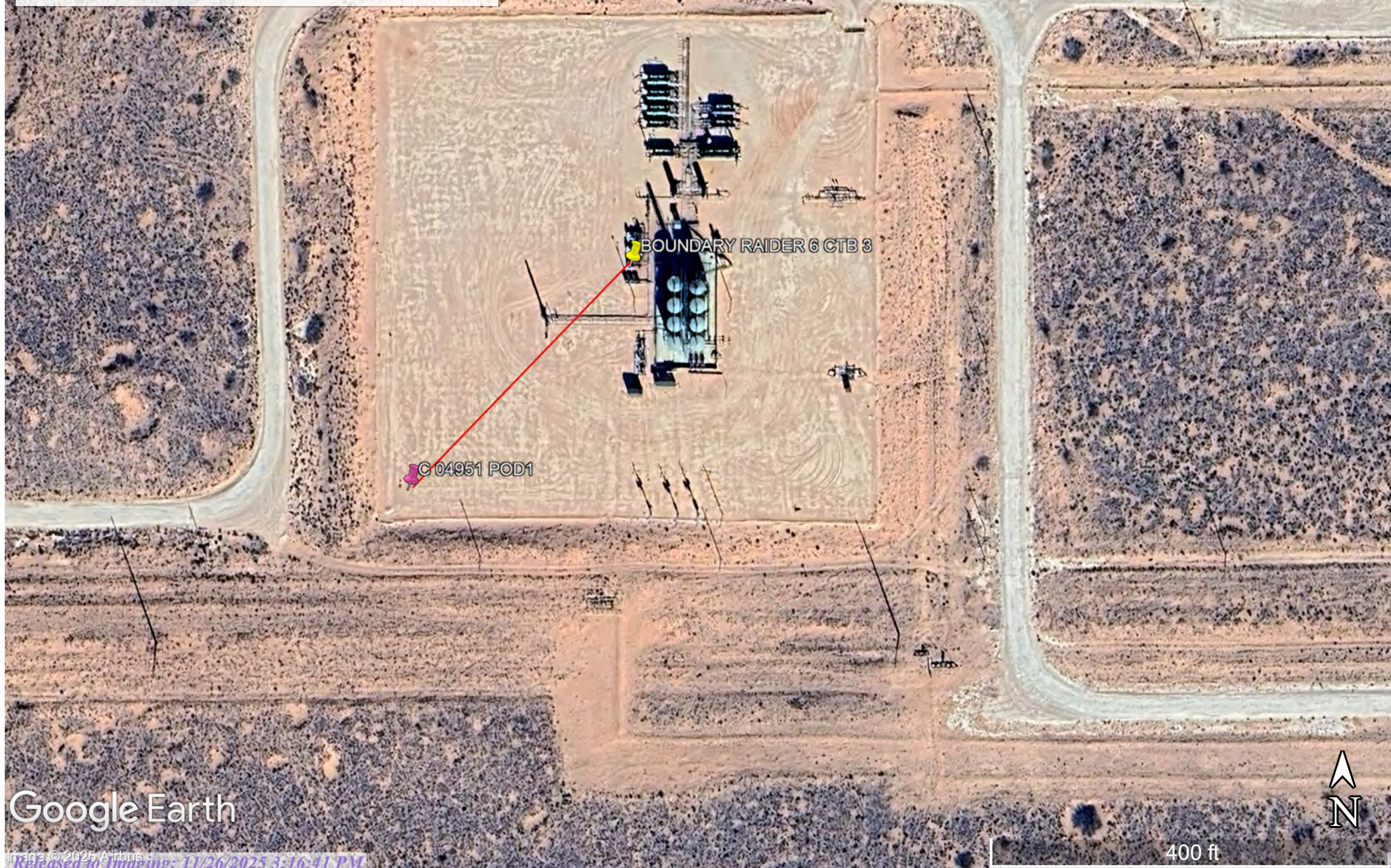
The data is furnished by the NMOSE/ISC and is accepted by the recipient with the expressed understanding that the OSE/ISC make no warranties, expressed or implied, concerning the accuracy, completeness, reliability, usability, or suitability for any particular purpose of the data.

BOUNDARY RAIDER 6 CTB 3

Devon Energy
Facility ID: fAPP2129928099
Lea County, NM
NAPP2520944309
OSE Pod Map

Legend

- 0.06 miles
- BOUNDARY RAIDER 6 CTB 3
- C 04951 POD1



Google Earth



[USGS Home](#)
[Contact USGS](#)
[Search USGS](#)

National Water Information System: Web Interface

USGS Water Resources

Data Category:

Groundwater ▼

Geographic Area:

United States ▼

GO

Click to hide News Bulletins

- Explore the *NEW* [USGS National Water Dashboard](#) interactive map to access real-time water data from over 13,500 stations nationwide.

Groundwater levels for the Nation



Important: [Next Generation Monitoring Location Page](#)

Search Results -- 1 sites found

site_no list =

- 321809103481801

Minimum number of levels = 1

[Save file of selected sites](#) to local disk for future upload

USGS 321809103481801 23S.31E.17.31141

Available data for this site

Groundwater: Field measurements ▼

GO

Eddy County, New Mexico

Hydrologic Unit Code 13060011

Latitude 32°18'11.3", Longitude 103°48'23.4" NAD83

Land-surface elevation 3,326.00 feet above NGVD29

The depth of the well is 354 feet below land surface.

This well is completed in the Other aquifers (N9999OTHER) national aquifer.

This well is completed in the Rustler Formation (312RSLR) local aquifer.

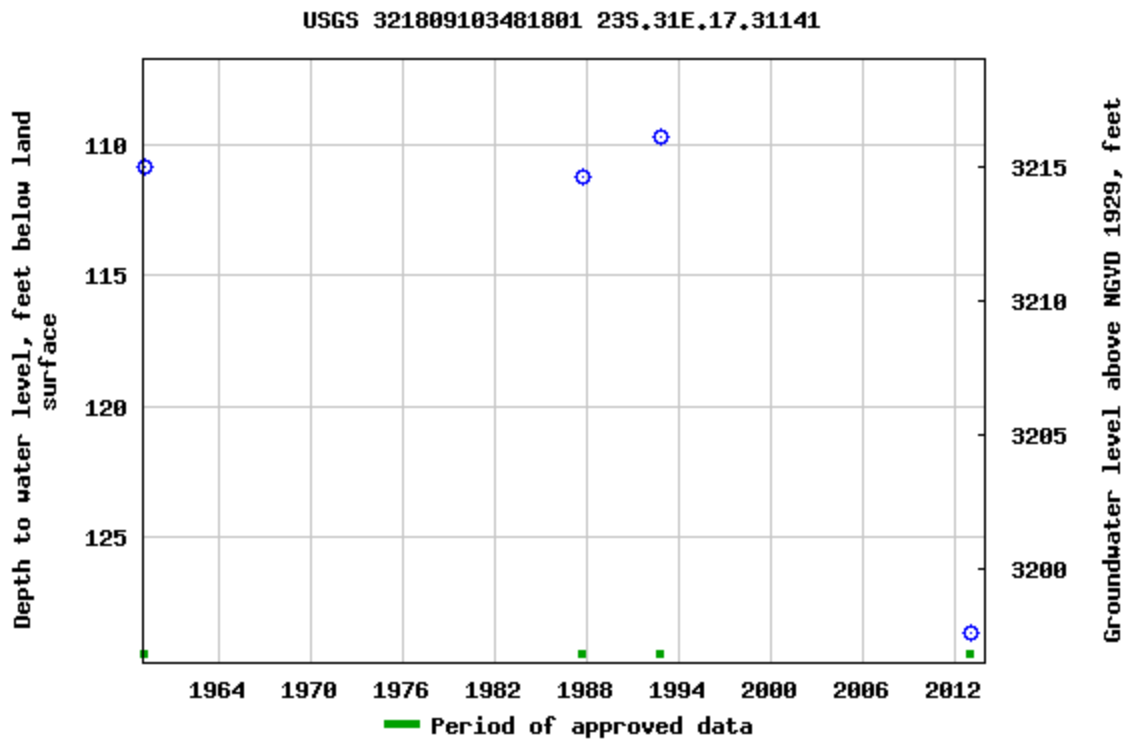
Output formats

[Table of data](#)

[Tab-separated data](#)

[Graph of data](#)

[Reselect period](#)



Breaks in the plot represent a gap of at least one year between field measurements.

[Download a presentation-quality graph](#)

[Questions or Comments](#)

[Help](#)

[Data Tips](#)

[Explanation of terms](#)

[Subscribe for system changes](#)

[Accessibility](#) [FOIA](#) [Privacy](#) [Policies and Notices](#)

[U.S. Department of the Interior](#) | [U.S. Geological Survey](#)

Title: Groundwater for USA: Water Levels

URL: <https://nwis.waterdata.usgs.gov/nwis/gwlevels?>



Page Contact Information: [USGS Water Data Support Team](#)

Page Last Modified: 2025-07-30 14:26:03 EDT

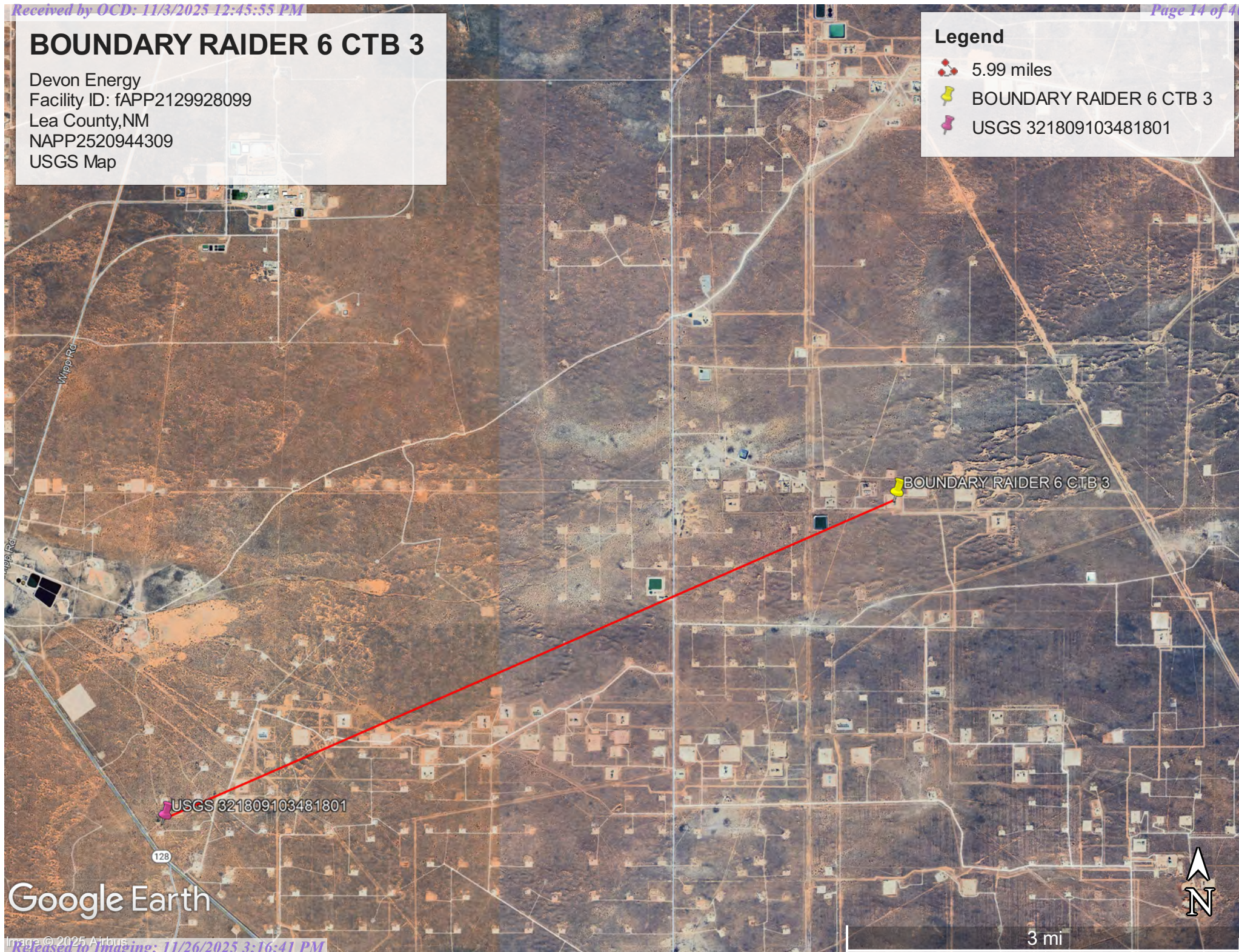
0.72 0.54 nadww02

BOUNDARY RAIDER 6 CTB 3

Devon Energy
Facility ID: fAPP2129928099
Lea County, NM
NAPP2520944309
USGS Map

Legend

- 5.99 miles
- BOUNDARY RAIDER 6 CTB 3
- USGS 321809103481801



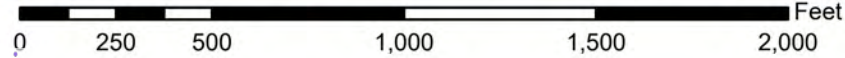
Google Earth

Image © 2025 Airbus
Released to Imaging: 11/26/2025 3:16:41 PM

National Flood Hazard Layer FIRMette



103°43'3"W 32°20'33"N



1:6,000

103°42'26"W 32°20'3"N

Basemap Imagery Source: USGS National Map 2023

Legend

SEE FIS REPORT FOR DETAILED LEGEND AND INDEX MAP FOR FIRM PANEL LAYOUT

SPECIAL FLOOD HAZARD AREAS		Without Base Flood Elevation (BFE) <i>Zone A, V, A99</i>
		With BFE or Depth <i>Zone AE, AO, AH, VE, AR</i>
		Regulatory Floodway
OTHER AREAS OF FLOOD HAZARD		0.2% Annual Chance Flood Hazard, Areas of 1% annual chance flood with average depth less than one foot or with drainage areas of less than one square mile <i>Zone Z</i>
		Future Conditions 1% Annual Chance Flood Hazard <i>Zone X</i>
		Area with Reduced Flood Risk due to Levee. See Notes. <i>Zone X</i>
		Area with Flood Risk due to Levee <i>Zone X</i>
OTHER AREAS		NO SCREEN Area of Minimal Flood Hazard <i>Zone X</i>
		Effective LOMRs
GENERAL STRUCTURES		Area of Undetermined Flood Hazard <i>Zone D</i>
		Channel, Culvert, or Storm Sewer
OTHER FEATURES		Levee, Dike, or Floodwall
		20.2 Cross Sections with 1% Annual Chance
		17.5 Water Surface Elevation
		Coastal Transect
		Base Flood Elevation Line (BFE)
		Limit of Study
		Jurisdiction Boundary
		Coastal Transect Baseline
		Profile Baseline
		Hydrographic Feature
MAP PANELS		Digital Data Available
		No Digital Data Available
		Unmapped

The pin displayed on the map is an approximate point selected by the user and does not represent an authoritative property location.

This map complies with FEMA's standards for the use of digital flood maps if it is not void as described below. The basemap shown complies with FEMA's basemap accuracy standards

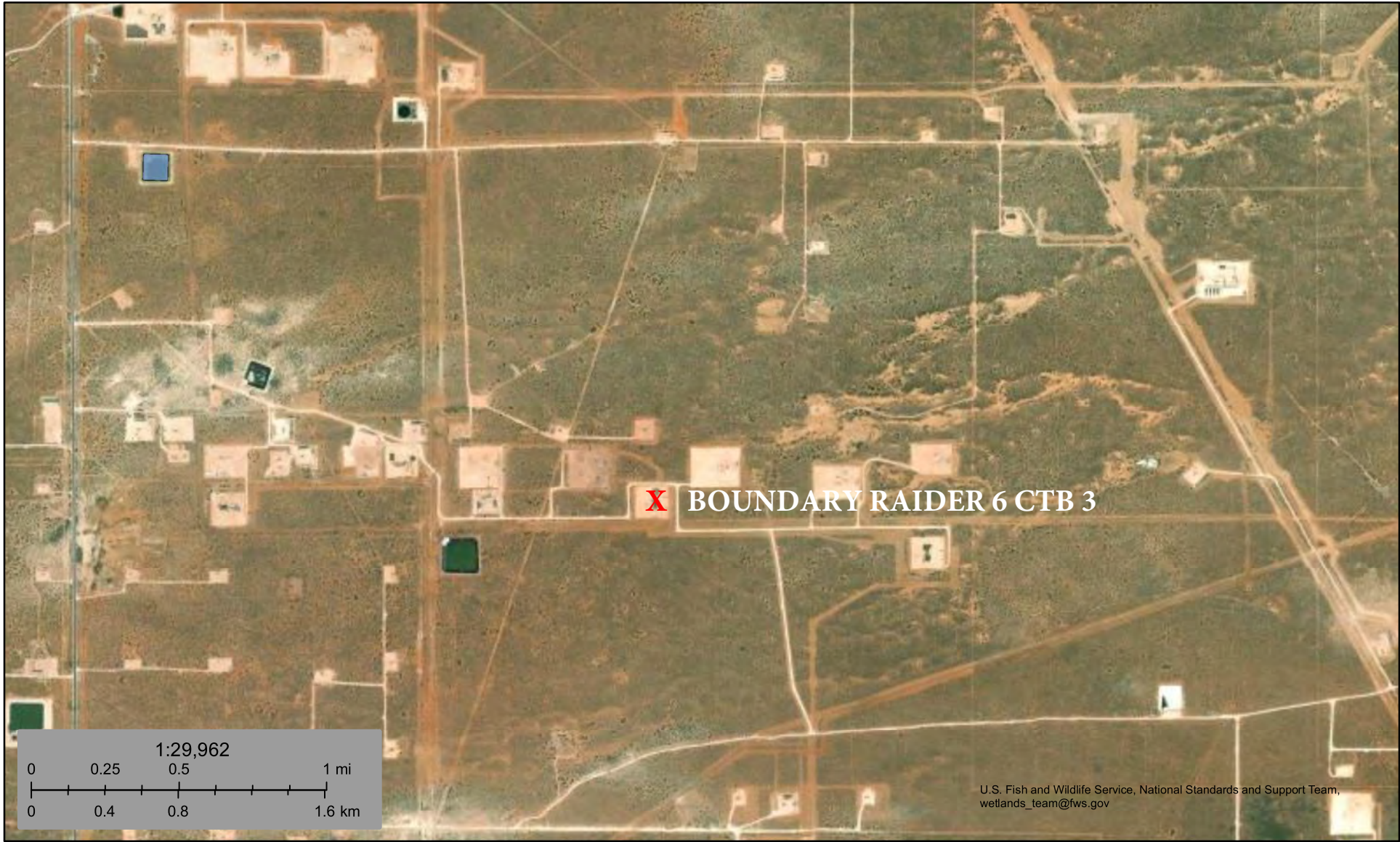
The flood hazard information is derived directly from the authoritative NFHL web services provided by FEMA. This map was exported on 7/30/2025 at 6:37 PM and does not reflect changes or amendments subsequent to this date and time. The NFHL and effective information may change or become superseded by new data over time.

This map image is void if the one or more of the following map elements do not appear: basemap imagery, flood zone labels, legend, scale bar, map creation date, community identifiers, FIRM panel number, and FIRM effective date. Map images for unmapped and unmodernized areas cannot be used for regulatory purposes.

Released to Imaging: 11/26/2025 3:16:41 PM

Received by OCD: 11/26/2025 12:45:55 PM

Page 15 of 40



July 30, 2025

Wetlands




- | | | | | | |
|---|--------------------------------|---|-----------------------------------|---|----------|
|  | Estuarine and Marine Deepwater |  | Freshwater Emergent Wetland |  | Lake |
|  | Estuarine and Marine Wetland |  | Freshwater Forested/Shrub Wetland |  | Other |
|  | |  | Freshwater Pond |  | Riverine |

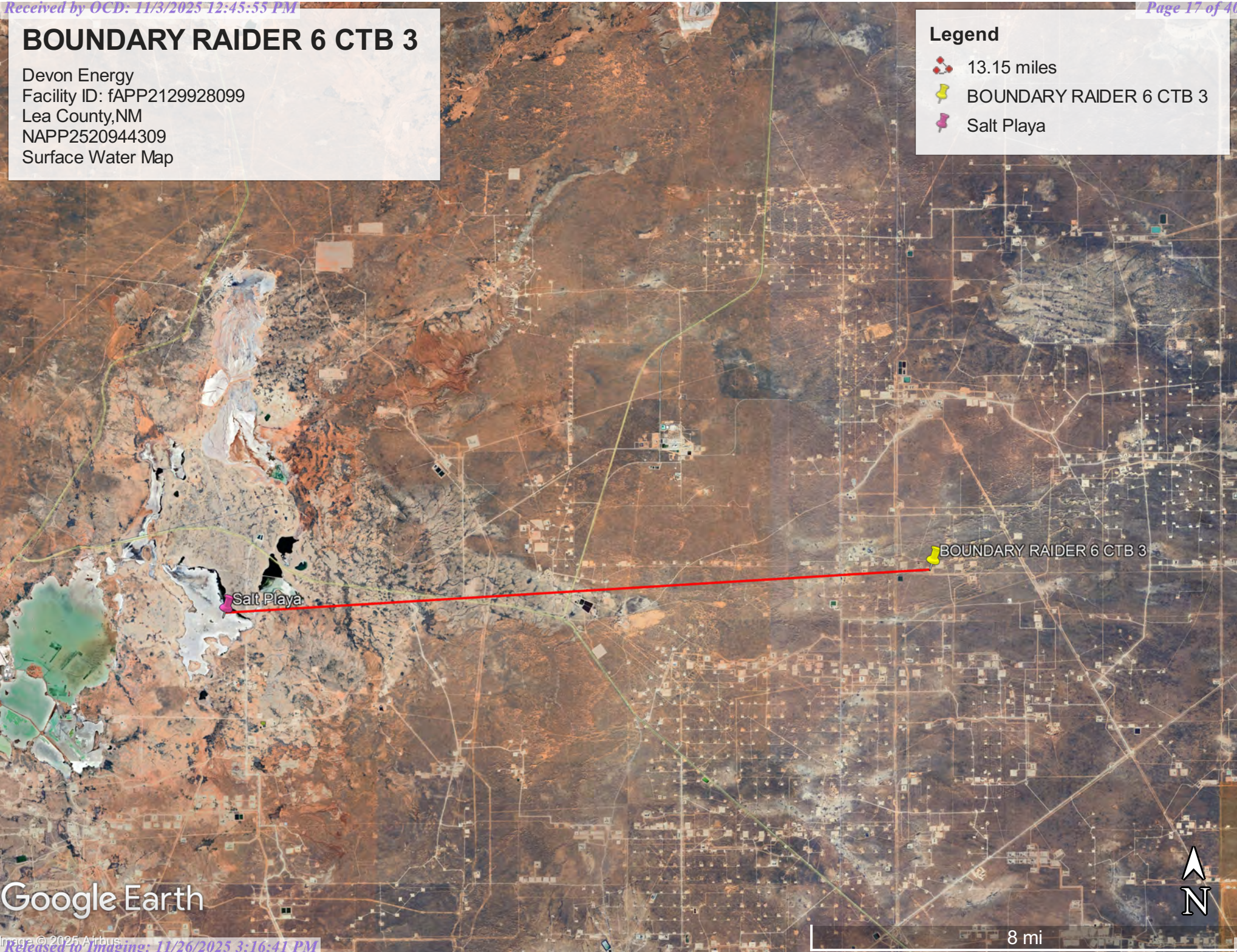
This map is for general reference only. The US Fish and Wildlife Service is not responsible for the accuracy or currentness of the base data shown on this map. All wetlands related data should be used in accordance with the layer metadata found on the Wetlands Mapper web site.

BOUNDARY RAIDER 6 CTB 3

Devon Energy
Facility ID: fAPP2129928099
Lea County, NM
NAPP2520944309
Surface Water Map

Legend

-  13.15 miles
-  BOUNDARY RAIDER 6 CTB 3
-  Salt Playa



Google Earth

APPENDIX B

Soil Survey & Geological Data



Pima Environmental Services, LLC
5614 N Lovington Hwy, Hobbs, NM 88240
575-964-7740 | www.pimaoil.com

DEVON ENERGY PRODUCTION, LP.

Map Unit Description: Maljamar and Palomas fine sands, 0 to 3 percent slopes---Lea County,
New Mexico

Lea County, New Mexico

MF—Maljamar and Palomas fine sands, 0 to 3 percent slopes

Map Unit Setting

National map unit symbol: dmqb

Elevation: 3,000 to 3,900 feet

Mean annual precipitation: 10 to 15 inches

Mean annual air temperature: 60 to 62 degrees F

Frost-free period: 190 to 205 days

Farmland classification: Farmland of statewide importance

Map Unit Composition

Maljamar and similar soils: 46 percent

Palomas and similar soils: 44 percent

Minor components: 10 percent

Estimates are based on observations, descriptions, and transects of the mapunit.

Description of Maljamar

Setting

Landform: Plains

Landform position (three-dimensional): Rise

Down-slope shape: Linear

Across-slope shape: Linear

Parent material: Sandy eolian deposits derived from sedimentary rock

Typical profile

A - 0 to 24 inches: fine sand

Bt - 24 to 50 inches: sandy clay loam

Bkm - 50 to 60 inches: cemented material

Properties and qualities

Slope: 0 to 3 percent

Depth to restrictive feature: 40 to 60 inches to petrocalcic

Drainage class: Well drained

Runoff class: Very low

Capacity of the most limiting layer to transmit water (Ksat): Very low to moderately low (0.00 to 0.06 in/hr)

Depth to water table: More than 80 inches

Frequency of flooding: None

Frequency of ponding: None

Calcium carbonate, maximum content: 5 percent

Maximum salinity: Nonsaline to very slightly saline (0.0 to 2.0 mmhos/cm)

Sodium adsorption ratio, maximum: 2.0

Available water supply, 0 to 60 inches: Low (about 5.6 inches)

Interpretive groups

Land capability classification (irrigated): 7e

Map Unit Description: Maljamar and Palomas fine sands, 0 to 3 percent slopes---Lea County,
New Mexico

Land capability classification (nonirrigated): 7e
Hydrologic Soil Group: B
Ecological site: R070BD003NM - Loamy Sand
Hydric soil rating: No

Description of Palomas

Setting

Landform: Plains
Landform position (three-dimensional): Rise
Down-slope shape: Linear
Across-slope shape: Linear
Parent material: Alluvium derived from sandstone

Typical profile

A - 0 to 16 inches: fine sand
Bt - 16 to 60 inches: sandy clay loam
Bk - 60 to 66 inches: sandy loam

Properties and qualities

Slope: 0 to 3 percent
Depth to restrictive feature: More than 80 inches
Drainage class: Well drained
Runoff class: Low
Capacity of the most limiting layer to transmit water
(Ksat): Moderately high to high (0.60 to 2.00 in/hr)
Depth to water table: More than 80 inches
Frequency of flooding: None
Frequency of ponding: None
Calcium carbonate, maximum content: 45 percent
Gypsum, maximum content: 1 percent
Maximum salinity: Nonsaline to very slightly saline (0.0 to 2.0
mmhos/cm)
Sodium adsorption ratio, maximum: 2.0
Available water supply, 0 to 60 inches: Moderate (about 7.5
inches)

Interpretive groups

Land capability classification (irrigated): None specified
Land capability classification (nonirrigated): 7e
Hydrologic Soil Group: B
Ecological site: R070BD003NM - Loamy Sand
Hydric soil rating: No

Minor Components

Kermit

Percent of map unit: 5 percent
Ecological site: R070BC022NM - Sandhills
Hydric soil rating: No

Wink

Percent of map unit: 5 percent
Ecological site: R070BD003NM - Loamy Sand

Map Unit Description: Maljamar and Palomas fine sands, 0 to 3 percent slopes---Lea County,
New Mexico

Hydric soil rating: No




Data Source Information

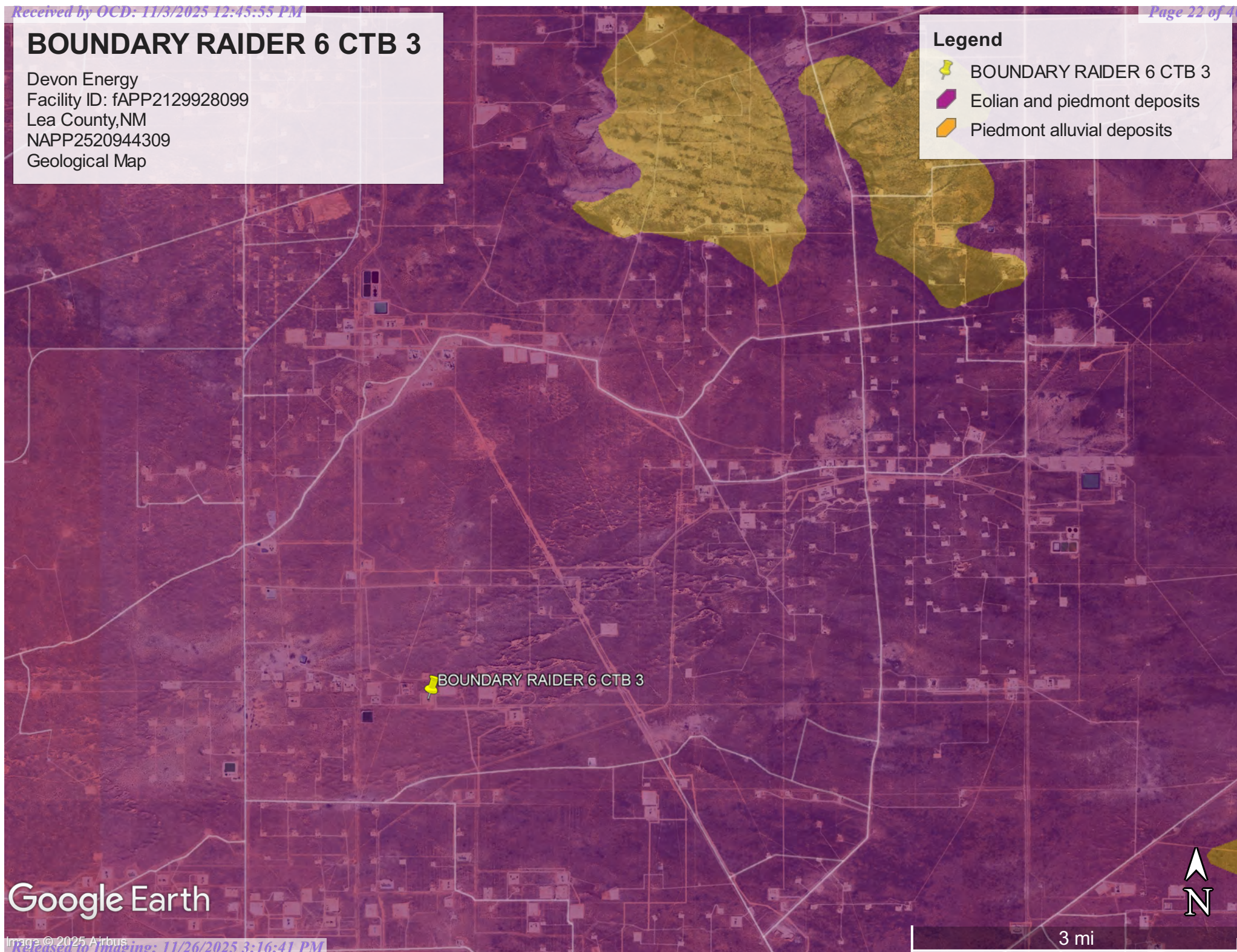
Soil Survey Area: Lea County, New Mexico
Survey Area Data: Version 21, Sep 3, 2024

BOUNDARY RAIDER 6 CTB 3

Devon Energy
Facility ID: fAPP2129928099
Lea County, NM
NAPP2520944309
Geological Map

Legend

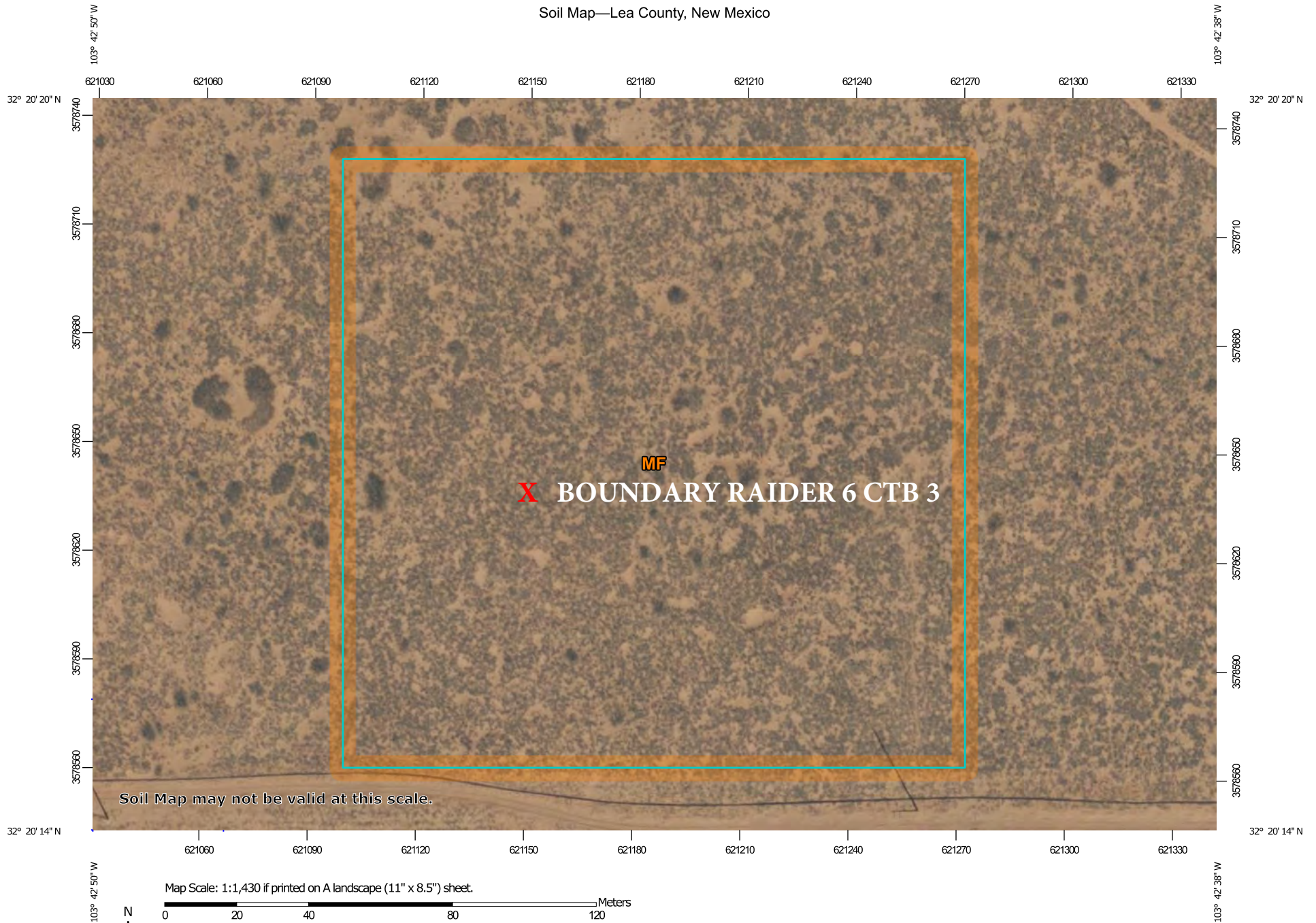
-  BOUNDARY RAIDER 6 CTB 3
-  Eolian and piedmont deposits
-  Piedmont alluvial deposits



Google Earth

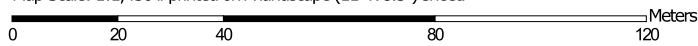
3 mi

Soil Map—Lea County, New Mexico



Soil Map may not be valid at this scale.

Map Scale: 1:1,430 if printed on A landscape (11" x 8.5") sheet.



Map projection: Web Mercator Corner coordinates: WGS84 Edge tics: UTM Zone 13N WGS84




Natural Resources
Conservation Service

Web Soil Survey
National Cooperative Soil Survey

7/30/2025
Page 1 of 3

MAP LEGEND

Area of Interest (AOI)

 Area of Interest (AOI)

Soils

 Soil Map Unit Polygons

 Soil Map Unit Lines

 Soil Map Unit Points

Special Point Features



Blowout



Borrow Pit



Clay Spot



Closed Depression



Gravel Pit



Gravelly Spot



Landfill



Lava Flow



Marsh or swamp



Mine or Quarry



Miscellaneous Water



Perennial Water



Rock Outcrop



Saline Spot



Sandy Spot



Severely Eroded Spot



Sinkhole



Slide or Slip



Sodic Spot



Spoil Area



Stony Spot



Very Stony Spot



Wet Spot



Other



Special Line Features

Water Features



Streams and Canals

Transportation



Rails



Interstate Highways



US Routes



Major Roads



Local Roads

Background



Aerial Photography

MAP INFORMATION

The soil surveys that comprise your AOI were mapped at 1:20,000.

Warning: Soil Map may not be valid at this scale.

Enlargement of maps beyond the scale of mapping can cause misunderstanding of the detail of mapping and accuracy of soil line placement. The maps do not show the small areas of contrasting soils that could have been shown at a more detailed scale.

Please rely on the bar scale on each map sheet for map measurements.

Source of Map: Natural Resources Conservation Service
Web Soil Survey URL:
Coordinate System: Web Mercator (EPSG:3857)

Maps from the Web Soil Survey are based on the Web Mercator projection, which preserves direction and shape but distorts distance and area. A projection that preserves area, such as the Albers equal-area conic projection, should be used if more accurate calculations of distance or area are required.

This product is generated from the USDA-NRCS certified data as of the version date(s) listed below.

Soil Survey Area: Lea County, New Mexico
Survey Area Data: Version 21, Sep 3, 2024

Soil map units are labeled (as space allows) for map scales 1:50,000 or larger.

Date(s) aerial images were photographed: Feb 7, 2020—May 12, 2020

The orthophoto or other base map on which the soil lines were compiled and digitized probably differs from the background imagery displayed on these maps. As a result, some minor shifting of map unit boundaries may be evident.

Map Unit Legend

Map Unit Symbol	Map Unit Name	Acres in AOI	Percent of AOI
MF	Maljamar and Palomas fine sands, 0 to 3 percent slopes	7.2	100.0%
Totals for Area of Interest		7.2	100.0%

APPENDIX C

48-Hour Sampling Notification

Liner Inspection Form



Pima Environmental Services, LLC
5614 N Lovington Hwy, Hobbs, NM 88240
575-964-7740 | www.pimaoil.com

DEVON ENERGY PRODUCTION, LP.

Sante Fe Main Office
Phone: (505) 476-3441

General Information
Phone: (505) 629-6116

Online Phone Directory
<https://www.emnrd.nm.gov/ocd/contact-us>

State of New Mexico
Energy, Minerals and Natural Resources
Oil Conservation Division
1220 S. St Francis Dr.
Santa Fe, NM 87505

QUESTIONS

Action 502273

QUESTIONS

Operator: DEVON ENERGY PRODUCTION COMPANY, LP 333 West Sheridan Ave. Oklahoma City, OK 73102	OGRID: 6137
	Action Number: 502273
	Action Type: [NOTIFY] Notification Of Liner Inspection (C-141L)

QUESTIONS

Prerequisites	
Incident ID (n#)	nAPP2520944309
Incident Name	NAPP2520944309 BOUNDARY RAIDER 6 CTB 3 @ 0
Incident Type	Produced Water Release
Incident Status	Initial C-141 Approved
Incident Facility	[fAPP2129928099] BOUNDARY RAIDER 6 CTB 3

Location of Release Source	
Site Name	BOUNDARY RAIDER 6 CTB 3
Date Release Discovered	07/26/2025
Surface Owner	Federal

Liner Inspection Event Information	
<i>Please answer all the questions in this group.</i>	
What is the liner inspection surface area in square feet	5,349
Have all the impacted materials been removed from the liner	Yes
Liner inspection date pursuant to Subparagraph (a) of Paragraph (5) of Subsection A of 19.15.29.11 NMAC	09/05/2025
Time liner inspection will commence	01:00 PM
Please provide any information necessary for observers to liner inspection	Marlon Garcia (575) 416-0639
Please provide any information necessary for navigation to liner inspection site	32.33829329, -103.712399

Sante Fe Main Office
Phone: (505) 476-3441

General Information
Phone: (505) 629-6116

Online Phone Directory
<https://www.emnrd.nm.gov/ocd/contact-us>

State of New Mexico
Energy, Minerals and Natural Resources
Oil Conservation Division
1220 S. St Francis Dr.
Santa Fe, NM 87505

CONDITIONS

Action 502273

CONDITIONS

Operator: DEVON ENERGY PRODUCTION COMPANY, LP 333 West Sheridan Ave. Oklahoma City, OK 73102	OGRID: 6137
	Action Number: 502273
	Action Type: [NOTIFY] Notification Of Liner Inspection (C-141L)

CONDITIONS

Created By	Condition	Condition Date
jralej	Failure to notify the OCD of liner inspections including any changes in date/time per the requirements of 19.15.29.11.A(5)(a)(ii) NMAC, may result in the inspection not being accepted.	9/3/2025



Pima Environmental Services, LLC

Liner Inspection FormCompany Name: Devon EnergySite: Boundary Raider 6 CTB 3Lat/Long: 32.33829329, -103.712399

NMOCD Incident ID

& Incident Date: NAPP2520944309 07/26/2025

2-Day Notification

Sent: via email by Jim Raley on OCD portal 9/3/2025 (Application ID: 502273)Inspection Date: 9/5/2025

Liner Type: Earthen w/liner Earthen no liner Polystar

Steel w/poly liner Steel w/spray epoxy No Liner

Other: _____

Visualization	Yes	No	Comments
Is there a tear in the liner?		X	
Are there holes in the liner?		X	
Is the liner retaining any fluids?	X		Fluids from power washing.
Does the liner have integrity to contain a leak?	X		

Comments: _____

Inspector Name: Andrew Franco Inspector Signature: Andrew Franco

APPENDIX D

Photographic Documentation



Pima Environmental Services, LLC
5614 N Lovington Hwy, Hobbs, NM 88240
575-964-7740 | www.pimaoil.com

DEVON ENERGY PRODUCTION, LP.



PHOTOGRAPHIC DOCUMENTATION

SITE NAME: Boundary Raider 6 CTB 3

Initial Liner Inspection :



Site Information Sign.



Photo of liner taken during initial liner inspection facing west.



Photo of liner taken during initial liner inspection facing northwest.



Photo of liner taken during initial liner inspection facing south.



Photo of liner taken during initial liner inspection facing southeast.



Photo of liner taken during initial liner inspection facing east.

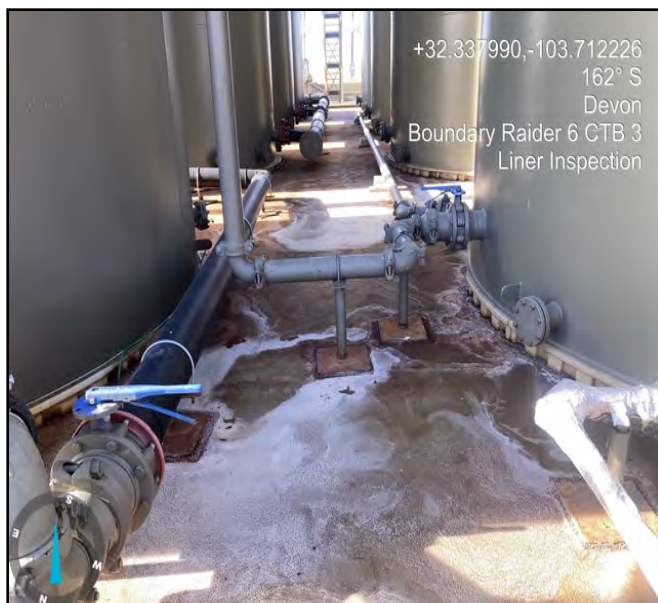


Photo of liner taken during initial liner inspection facing south.



Photo of liner taken during initial liner inspection facing west.

PHOTOGRAPHIC DOCUMENTATION

SITE NAME: Boundary Raider 6 CTB 3

Liner Inspection :



Photo of location taken during Liner Inspection facing north.



Photo of location taken during Liner Inspection facing southeast.



Photo of location taken during Liner Inspection facing northwest.

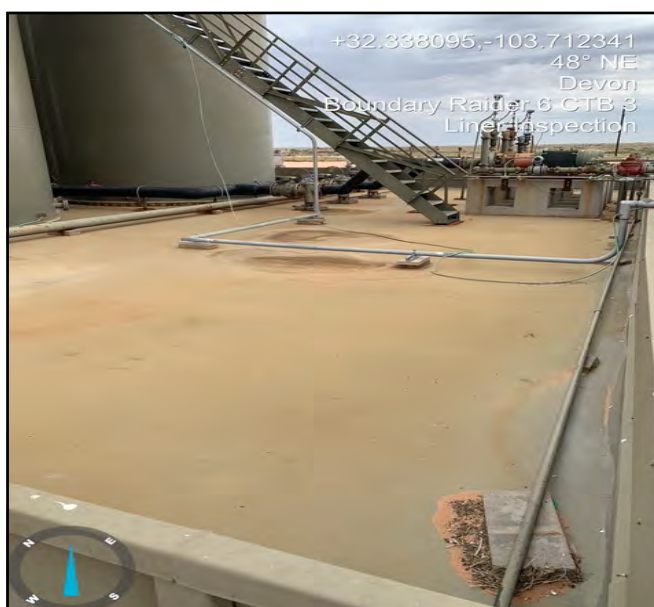


Photo of location taken during Liner Inspection facing northeast.



Photo of location taken during Liner Inspection facing northwest.



Photo of location taken during Liner Inspection.



Photo of location taken during Liner Inspection.

Sante Fe Main Office
Phone: (505) 476-3441

General Information
Phone: (505) 629-6116

Online Phone Directory
<https://www.emnrd.nm.gov/ocd/contact-us>

State of New Mexico
Energy, Minerals and Natural Resources
Oil Conservation Division
1220 S. St Francis Dr.
Santa Fe, NM 87505

QUESTIONS

Action 522397

QUESTIONS

Operator: DEVON ENERGY PRODUCTION COMPANY, LP 333 West Sheridan Ave. Oklahoma City, OK 73102	OGRID: 6137
	Action Number: 522397
	Action Type: [C-141] Remediation Closure Request C-141 (C-141-v-Closure)

QUESTIONS

Prerequisites	
Incident ID (n#)	nAPP2520944309
Incident Name	NAPP2520944309 BOUNDARY RAIDER 6 CTB 3 @ FAPP2129928099
Incident Type	Produced Water Release
Incident Status	Remediation Closure Report Received
Incident Facility	[fAPP2129928099] BOUNDARY RAIDER 6 CTB 3

Location of Release Source

Please answer all the questions in this group.

Site Name	BOUNDARY RAIDER 6 CTB 3
Date Release Discovered	07/26/2025
Surface Owner	Federal

Incident Details

Please answer all the questions in this group.

Incident Type	Produced Water Release
Did this release result in a fire or is the result of a fire	No
Did this release result in any injuries	No
Has this release reached or does it have a reasonable probability of reaching a watercourse	No
Has this release endangered or does it have a reasonable probability of endangering public health	No
Has this release substantially damaged or will it substantially damage property or the environment	No
Is this release of a volume that is or may with reasonable probability be detrimental to fresh water	No

Nature and Volume of Release

Material(s) released, please answer all that apply below. Any calculations or specific justifications for the volumes provided should be attached to the follow-up C-141 submission.

Crude Oil Released (bbls) Details	Not answered.
Produced Water Released (bbls) Details	Cause: Equipment Failure Dump Line Produced Water Released: 14 BBL Recovered: 14 BBL Lost: 0 BBL.
Is the concentration of chloride in the produced water >10,000 mg/l	Yes
Condensate Released (bbls) Details	Not answered.
Natural Gas Vented (Mcf) Details	Not answered.
Natural Gas Flared (Mcf) Details	Not answered.
Other Released Details	Not answered.
Are there additional details for the questions above (i.e. any answer containing Other, Specify, Unknown, and/or Fire, or any negative lost amounts)	Vict clamp failed on dump line. This allowed fluids to be released to lined secondary containment.

Sante Fe Main Office
Phone: (505) 476-3441

General Information
Phone: (505) 629-6116

Online Phone Directory
<https://www.emnrd.nm.gov/ocd/contact-us>

State of New Mexico
Energy, Minerals and Natural Resources
Oil Conservation Division
1220 S. St Francis Dr.
Santa Fe, NM 87505

QUESTIONS, Page 2

Action 522397

QUESTIONS (continued)

Operator: DEVON ENERGY PRODUCTION COMPANY, LP 333 West Sheridan Ave. Oklahoma City, OK 73102	OGRID: 6137
	Action Number: 522397
	Action Type: [C-141] Remediation Closure Request C-141 (C-141-v-Closure)

QUESTIONS

Nature and Volume of Release (continued)	
Is this a gas only submission (i.e. only significant Mcf values reported)	No, according to supplied volumes this does not appear to be a "gas only" report.
Was this a major release as defined by Subsection A of 19.15.29.7 NMAC	No
Reasons why this would be considered a submission for a notification of a major release	Unavailable.
With the implementation of the 19.15.27 NMAC (05/25/2021), venting and/or flaring of natural gas (i.e. gas only) are to be submitted on the C-129 form.	

Initial Response

The responsible party must undertake the following actions immediately unless they could create a safety hazard that would result in injury.

The source of the release has been stopped	True
The impacted area has been secured to protect human health and the environment	True
Released materials have been contained via the use of berms or dikes, absorbent pads, or other containment devices	True
All free liquids and recoverable materials have been removed and managed appropriately	True
If all the actions described above have not been undertaken, explain why	Not answered.

Per Paragraph (4) of Subsection B of 19.15.29.8 NMAC the responsible party may commence remediation immediately after discovery of a release. If remediation has begun, please prepare and attach a narrative of actions to date in the follow-up C-141 submission. If remedial efforts have been successfully completed or if the release occurred within a lined containment area (see Subparagraph (a) of Paragraph (5) of Subsection A of 19.15.29.11 NMAC), please prepare and attach all information needed for closure evaluation in the follow-up C-141 submission.

I hereby certify that the information given above is true and complete to the best of my knowledge and understand that pursuant to OCD rules and regulations all operators are required to report and/or file certain release notifications and perform corrective actions for releases which may endanger public health or the environment. The acceptance of a C-141 report by the OCD does not relieve the operator of liability should their operations have failed to adequately investigate and remediate contamination that pose a threat to groundwater, surface water, human health or the environment. In addition, OCD acceptance of a C-141 report does not relieve the operator of responsibility for compliance with any other federal, state, or local laws and/or regulations.

I hereby agree and sign off to the above statement	Name: James Raley Title: EHS Professional Email: jim.raley@dvsn.com Date: 11/03/2025
--	---

Sante Fe Main Office
Phone: (505) 476-3441

General Information
Phone: (505) 629-6116

Online Phone Directory
<https://www.emnrd.nm.gov/ocd/contact-us>

State of New Mexico
Energy, Minerals and Natural Resources
Oil Conservation Division
1220 S. St Francis Dr.
Santa Fe, NM 87505

QUESTIONS, Page 3

Action 522397

QUESTIONS (continued)

Operator: DEVON ENERGY PRODUCTION COMPANY, LP 333 West Sheridan Ave. Oklahoma City, OK 73102	OGRID: 6137
	Action Number: 522397
	Action Type: [C-141] Remediation Closure Request C-141 (C-141-v-Closure)

QUESTIONS

Site Characterization	
<i>Please answer all the questions in this group (only required when seeking remediation plan approval and beyond). This information must be provided to the appropriate district office no later than 90 days after the release discovery date.</i>	
What is the shallowest depth to groundwater beneath the area affected by the release in feet below ground surface (ft bgs)	Between 100 and 500 (ft.)
What method was used to determine the depth to ground water	NM OSE iWaters Database Search
Did this release impact groundwater or surface water	No
What is the minimum distance, between the closest lateral extents of the release and the following surface areas:	
A continuously flowing watercourse or any other significant watercourse	Greater than 5 (mi.)
Any lakebed, sinkhole, or playa lake (measured from the ordinary high-water mark)	Greater than 5 (mi.)
An occupied permanent residence, school, hospital, institution, or church	Greater than 5 (mi.)
A spring or a private domestic fresh water well used by less than five households for domestic or stock watering purposes	Between 1 and 5 (mi.)
Any other fresh water well or spring	Between 1 and 5 (mi.)
Incorporated municipal boundaries or a defined municipal fresh water well field	Greater than 5 (mi.)
A wetland	Greater than 5 (mi.)
A subsurface mine	Greater than 5 (mi.)
An (non-karst) unstable area	Greater than 5 (mi.)
Categorize the risk of this well / site being in a karst geology	Low
A 100-year floodplain	Greater than 5 (mi.)
Did the release impact areas not on an exploration, development, production, or storage site	No

Remediation Plan	
<i>Please answer all the questions that apply or are indicated. This information must be provided to the appropriate district office no later than 90 days after the release discovery date.</i>	
Requesting a remediation plan approval with this submission	Yes
<i>Attach a comprehensive report demonstrating the lateral and vertical extents of soil contamination associated with the release have been determined, pursuant to 19.15.29.11 NMAC and 19.15.29.13 NMAC.</i>	
Have the lateral and vertical extents of contamination been fully delineated	Yes
Was this release entirely contained within a lined containment area	Yes
<i>Per Subsection B of 19.15.29.11 NMAC unless the site characterization report includes completed efforts at remediation, the report must include a proposed remediation plan in accordance with 19.15.29.12 NMAC, which includes the anticipated timelines for beginning and completing the remediation.</i>	
On what estimated date will the remediation commence	08/29/2025
On what date will (or did) the final sampling or liner inspection occur	09/05/2025
On what date will (or was) the remediation complete(d)	08/29/2025
What is the estimated surface area (in square feet) that will be remediated	5349
What is the estimated volume (in cubic yards) that will be remediated	0
<i>These estimated dates and measurements are recognized to be the best guess or calculation at the time of submission and may (be) change(d) over time as more remediation efforts are completed.</i>	
<i>The OCD recognizes that proposed remediation measures may have to be minimally adjusted in accordance with the physical realities encountered during remediation. If the responsible party has any need to significantly deviate from the remediation plan proposed, then it should consult with the division to determine if another remediation plan submission is required.</i>	

Sante Fe Main Office
Phone: (505) 476-3441

General Information
Phone: (505) 629-6116

Online Phone Directory
<https://www.emnrd.nm.gov/ocd/contact-us>

State of New Mexico
Energy, Minerals and Natural Resources
Oil Conservation Division
1220 S. St Francis Dr.
Santa Fe, NM 87505

QUESTIONS, Page 4

Action 522397

QUESTIONS (continued)

Operator: DEVON ENERGY PRODUCTION COMPANY, LP 333 West Sheridan Ave. Oklahoma City, OK 73102	OGRID: 6137
	Action Number: 522397
	Action Type: [C-141] Remediation Closure Request C-141 (C-141-v-Closure)

QUESTIONS

Remediation Plan (continued)	
<i>Please answer all the questions that apply or are indicated. This information must be provided to the appropriate district office no later than 90 days after the release discovery date.</i>	
This remediation will (or is expected to) utilize the following processes to remediate / reduce contaminants:	
<i>(Select all answers below that apply.)</i>	
Is (or was) there affected material present needing to be removed	No
Is (or was) there a power wash of the lined containment area (to be) performed	Yes
OTHER (Non-listed remedial process)	Not answered.
<i>Per Subsection B of 19.15.29.11 NMAC unless the site characterization report includes completed efforts at remediation, the report must include a proposed remediation plan in accordance with 19.15.29.12 NMAC, which includes the anticipated timelines for beginning and completing the remediation.</i>	
I hereby certify that the information given above is true and complete to the best of my knowledge and understand that pursuant to OCD rules and regulations all operators are required to report and/or file certain release notifications and perform corrective actions for releases which may endanger public health or the environment. The acceptance of a C-141 report by the OCD does not relieve the operator of liability should their operations have failed to adequately investigate and remediate contamination that pose a threat to groundwater, surface water, human health or the environment. In addition, OCD acceptance of a C-141 report does not relieve the operator of responsibility for compliance with any other federal, state, or local laws and/or regulations.	
I hereby agree and sign off to the above statement	Name: James Raley Title: EHS Professional Email: jim.raley@dv.com Date: 11/03/2025
<i>The OCD recognizes that proposed remediation measures may have to be minimally adjusted in accordance with the physical realities encountered during remediation. If the responsible party has any need to significantly deviate from the remediation plan proposed, then it should consult with the division to determine if another remediation plan submission is required.</i>	

Sante Fe Main Office
Phone: (505) 476-3441

General Information
Phone: (505) 629-6116

Online Phone Directory
<https://www.emnrd.nm.gov/ocd/contact-us>

State of New Mexico
Energy, Minerals and Natural Resources
Oil Conservation Division
1220 S. St Francis Dr.
Santa Fe, NM 87505

QUESTIONS, Page 6

Action 522397

QUESTIONS (continued)

Operator: DEVON ENERGY PRODUCTION COMPANY, LP 333 West Sheridan Ave. Oklahoma City, OK 73102	OGRID: 6137
	Action Number: 522397
	Action Type: [C-141] Remediation Closure Request C-141 (C-141-v-Closure)

QUESTIONS

Liner Inspection Information	
Last liner inspection notification (C-141L) recorded	502273
Liner inspection date pursuant to Subparagraph (a) of Paragraph (5) of Subsection A of 19.15.29.11 NMAC	09/05/2025
Was all the impacted materials removed from the liner	Yes
What was the liner inspection surface area in square feet	5349

Remediation Closure Request

Only answer the questions in this group if seeking remediation closure for this release because all remediation steps have been completed.

Requesting a remediation closure approval with this submission	Yes
Have the lateral and vertical extents of contamination been fully delineated	Yes
Was this release entirely contained within a lined containment area	Yes
What was the total surface area (in square feet) remediated	5349
What was the total volume (cubic yards) remediated	0
Summarize any additional remediation activities not included by answers (above)	Liner Inspected

The responsible party must attach information demonstrating they have complied with all applicable closure requirements and any conditions or directives of the OCD. This demonstration should be in the form of a comprehensive report (in .pdf format) including a scaled site map, sampling diagrams, relevant field notes, photographs of any excavation prior to backfilling, laboratory data including chain of custody documents of final sampling, and a narrative of the remedial activities. Refer to 19.15.29.12 NMAC.

I hereby certify that the information given above is true and complete to the best of my knowledge and understand that pursuant to OCD rules and regulations all operators are required to report and/or file certain release notifications and perform corrective actions for releases which may endanger public health or the environment. The acceptance of a C-141 report by the OCD does not relieve the operator of liability should their operations have failed to adequately investigate and remediate contamination that pose a threat to groundwater, surface water, human health or the environment. In addition, OCD acceptance of a C-141 report does not relieve the operator of responsibility for compliance with any other federal, state, or local laws and/or regulations. The responsible party acknowledges they must substantially restore, reclaim, and re-vegetate the impacted surface area to the conditions that existed prior to the release or their final land use in accordance with 19.15.29.13 NMAC including notification to the OCD when reclamation and re-vegetation are complete.

I hereby agree and sign off to the above statement	Name: James Raley Title: EHS Professional Email: jim.raley@dmv.com Date: 11/03/2025
--	--

Sante Fe Main Office
Phone: (505) 476-3441

General Information
Phone: (505) 629-6116

Online Phone Directory
<https://www.emnrd.nm.gov/ocd/contact-us>

State of New Mexico
Energy, Minerals and Natural Resources
Oil Conservation Division
1220 S. St Francis Dr.
Santa Fe, NM 87505

CONDITIONS

Action 522397

CONDITIONS

Operator: DEVON ENERGY PRODUCTION COMPANY, LP 333 West Sheridan Ave. Oklahoma City, OK 73102	OGRID: 6137
	Action Number: 522397
	Action Type: [C-141] Remediation Closure Request C-141 (C-141-v-Closure)

CONDITIONS

Created By	Condition	Condition Date
rhamlet	We have received your Remediation Closure Report for Incident #NAPP2520944309 BOUNDARY RAIDER 6 CTB 3, thank you. This Remediation Closure Report is approved.	11/26/2025