

**From:** [Wells, Shelly, EMNRD](#)  
**To:** ["Ashton Thielke"](#)  
**Cc:** [Ashton Thielke](#); [Laci Luig](#); [Bratcher, Michael, EMNRD](#)  
**Subject:** RE: [EXTERNAL] Cimarex - nAPP2521358117 RED HILLS UNIT 81H - Alternative 400sqft Sampling Plan  
**Date:** Thursday, December 18, 2025 9:28:00 AM  
**Attachments:** [image001.png](#)

---

Good morning Ashton,

As the extension was requested after the 90-day due date for either a remediation plan or a remediation closure report to be submitted pursuant to 19.15.29.12.B.(1) NMAC, an extension can not be granted. Extensions must be requested prior to the due date. Therefore, remediation should still occur and a report needs to be submitted to OCD Permitting as soon as possible.

Your request to use an alternative sampling plan is approved. Please include a copy of this and all notifications in the report to ensure the notifications are documented in the project file.

Kind regards,

Shelly

**Shelly Wells** \* Senior Environmental Scientist  
Environmental Bureau  
EMNRD-Oil Conservation Division  
1220 S. St. Francis Drive|Santa Fe, NM 87505  
(505)469-7520 [Shelly.Wells@emnrd.nm.gov](mailto:Shelly.Wells@emnrd.nm.gov)  
<http://www.emnrd.state.nm.us/OCD/>

---

**From:** Ashton Thielke <ThielkeA@carmonaresources.com>  
**Sent:** Thursday, December 18, 2025 7:25 AM  
**To:** Wells, Shelly, EMNRD <Shelly.Wells@emnrd.nm.gov>  
**Cc:** Ashton Thielke <ashton.thielke@coterra.com>; Laci Luig <Laci.Luig@coterra.com>  
**Subject:** [EXTERNAL] Cimarex - nAPP2521358117 RED HILLS UNIT 81H - Alternative 400sqft Sampling Plan

CAUTION: This email originated outside of our organization. Exercise caution prior to clicking on links or opening attachments.

Good morning Shelly,

The above mentioned release has now been made available as fracking operations have ceased and the well pad location is safe for remediation and sampling operations to begin. We are planning on going onsite to revisit the release area, conducting a surface scrape to a depth between 4-6 inches and begin composite confirmation sampling. Due to this excavation being less than 1 foot in depth, we will be collecting horizontal "grab" samples immediately outside of the scrapped area to horizontally define the release area.

On behalf of Cimarex Energy Co. of Colorado, Carmona Resources is requesting an increase in the composite floor sampling frequency from the standard 200 square feet to 400 square feet. The release occurred on pad and was contained to the well pad location.

The site is located within a low-karst area (page 3).

Recently (2023) a 106' Groundwater Determination Bore (GWDB) was drilled nearby (0.47 miles Southeast).

Based on groundwater depth, karst conditions, the absence of supply wells in the surrounding area, and no nearby watercourses, Cimarex Energy Co. of Colorado believe this alternative sampling plan will provide equal or greater protection of fresh water, public health, and the environment.

If approved, we plan on being onsite between December 23, 2025 & December 24, 2025 to collect composite confirmation surface samples from inside the release area to represent no more than 400 square foot as well as horizontal "grab" delineation samples surrounding the previous release area.

A C-141N has been placed for December 23, 2025 & December 24, 2025 due to the large amount to samples that will be collected.

Additionally, a 60 extension is requested. We will have a closure report summarizing all remediation activities turned into the OCD by February 16, 2026.

Please let me know if you have any questions.

Thanks!!

Ashton Thielke  
Environmental Manager  
310 West Wall Street, Suite 500  
Midland TX, 79701  
M: 432-813-8988 C: 281-753-5659  
[ThielkeA@carmonaresources.com](mailto:ThielkeA@carmonaresources.com)  
[Environmental Consulting Firm - Carmona Resources](#)

CARMONA RESOURCES









# Proposed Excavation Depth Map


Cimarex Energy Co. of Colorado  
nAPP2521358117  
Red Hills Unit #081H (08.01.2025)  
32.093211°, -103.572077°  
Lea County, New Mexico


0-0.5' Surface Scrape area measures approximately 37,875 sq ft  
Install hydrovac windows to confirm location and depth of lines.

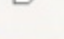
Legend

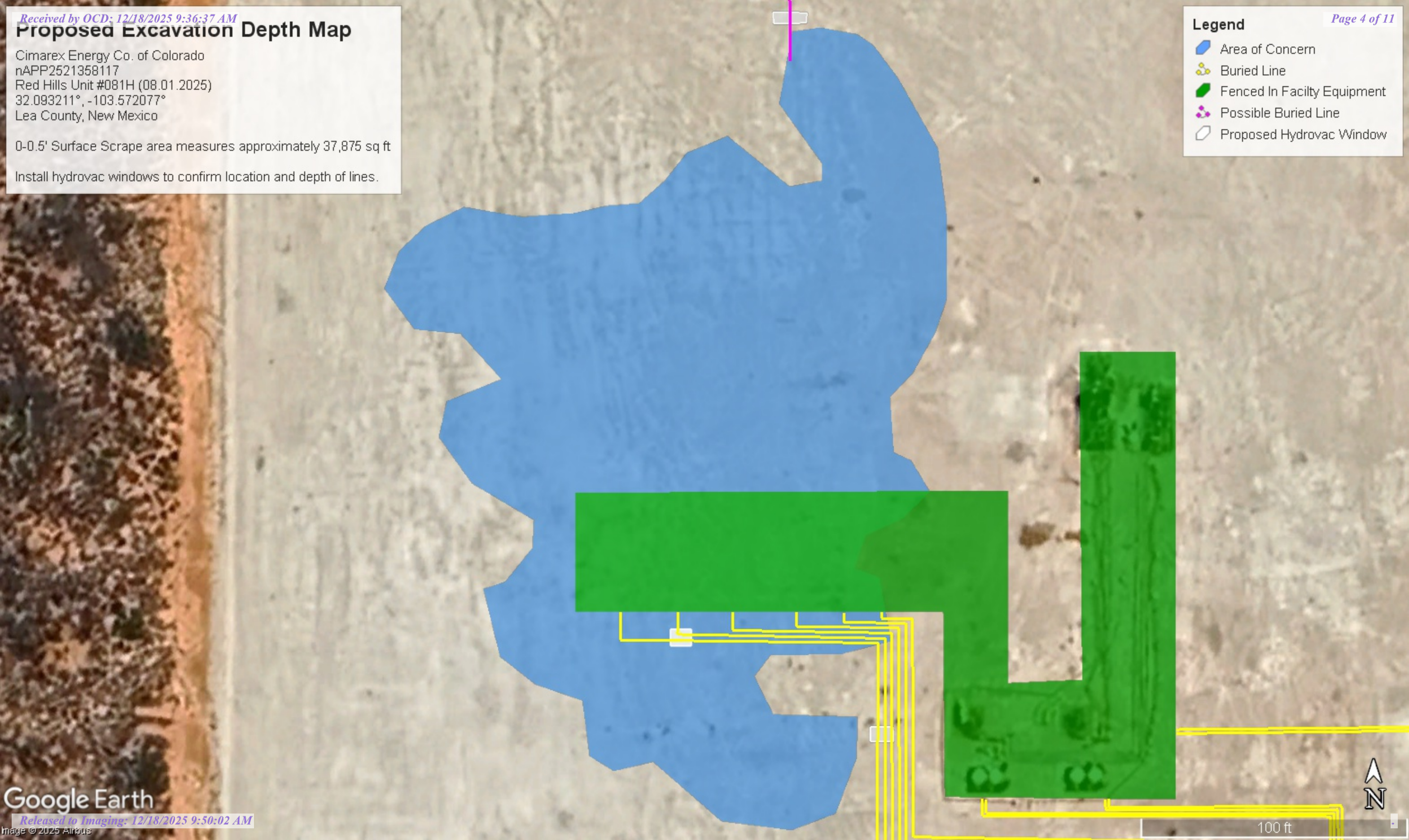
 Area of Concern

 Buried Line

 Fenced In Facility Equipment

 Possible Buried Line

 Proposed Hydrovac Window





**Legend**

- 0.47 Miles
- 0.50 Mile Radius
- Groundwater Determination Bore
- RED HILLS UNIT 81H (08.01.2025)





Low Karst

CIMAREX ENERGY CO. OF COLORADO

Legend



Low



Medium



RED HILLS UNIT 81H (08.01.2025)

RED HILLS UNIT 81H (08.01.2025)





New Mexico Office of the State Engineer

Water Column/Average Depth to Water

(A CLW##### in the POD suffix indicates the POD has been replaced & no longer serves a water right file.)

(R=POD has been replaced, O=orphaned, C=the file is closed)

(quarters are smallest to largest)

POD Number	Code	Sub basin	County	Q64	Q16	Q4	Sec	Tws	Range	X	Y	Map	(meters)	(In feet)		
													Distance	Well Depth	Depth Water	Water Column
<a href="#">C 04698 POD1</a>		CUB	LE	NE	NW	SE	27	25S	33E	635651.9	3553287.5		1807	80		
<a href="#">C 02313</a>		CUB	LE	NE	SW	SW	26	25S	33E	636971.0	3552098.0 *		2270	150	110	40
<a href="#">C 04537 POD1</a>		C	LE	SE	SE	SE	31	25S	33E	631846.7	3550243.2		3245	500	280	220
<a href="#">C 04699 POD1</a>		CUB	LE	NE	NW	SE	22	25S	33E	635709.0	3554978.3		3389	80		
<a href="#">C 02285 POD1</a>		CUB	LE	NW	SE	SE	03	26S	33E	636612.9	3548855.0		3439	220	220	0
<a href="#">C 02287</a>		C	LE	SW	SE	SE	03	26S	33E	636427.4	3548708.1		3468	220		
<a href="#">C 02290</a>		CUB	LE	SE	SE	SE	03	26S	33E	636538.0	3548770.9		3470	200	160	40
<a href="#">C 02286</a>		CUB	LE	SW	SE	SE	03	26S	33E	636469.5	3548714.8		3483	220	175	45
<a href="#">C 02288</a>		CUB	LE	SE	SE	SE	03	26S	33E	636645.9	3548758.5		3538	220	180	40
<a href="#">C 02289</a>		CUB	LE	SE	SE	SE	03	26S	33E	636612.0	3548675.0 *		3590	200	160	40

Average Depth to Water: 183 feet

Minimum Depth: 110 feet

Maximum Depth: 280 feet

Record Count: 10

UTM Filters (in meters):

Easting: 634730.00


Northing: 3551733.00

Radius: 4000

\* UTM location was derived from PLSS - see Help

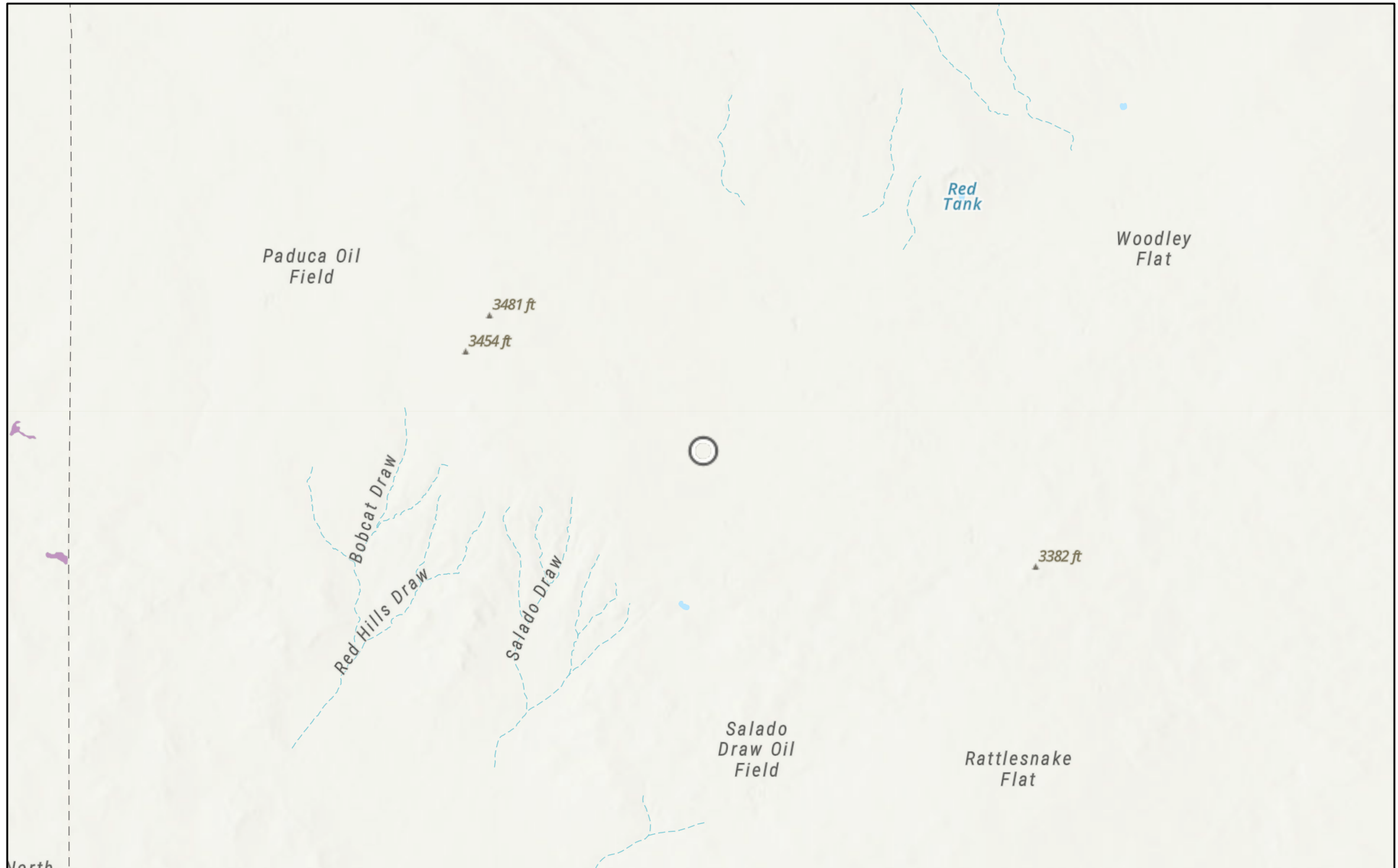
The data is furnished by the NMOSE/ISC and is accepted by the recipient with the expressed understanding that the OSE/ISC make no warranties, expressed or implied, concerning the accuracy, completeness, reliability, usability, or suitability for any particular purpose of the data.



								Sample Name: C-04732		Date: 04/19/2023	
								Site Name: Rojo 18 ELL			
								Incident Number: nAPP2222753156			
								Job Number: 03C2012007			
<b>LITHOLOGIC / SOIL SAMPLING LOG</b>								Logged By: J.falcomata		Method: Air Rotary	
Coordinates: 32.089035, -103.566486								Hole Diameter: 5"		Total Depth: 106'	
Comments: Soil boring was advanced to a total depth of 106' bgs. No water was observed within the soil boring after at least 72 hours. On 04/24/2023 the soil boring was plugged and abandoned using hydrated bentonite chips.											
Moisture Content	Chloride (ppm)	Vapor (ppm)	Staining	Sample ID	Sample Depth (ft bgs)	Depth (ft bgs)	USCS/Rock Symbol	Lithologic Descriptions			
Dry	-	-	N	-	-	10	SP-SM	Note: Driller injected well with a water and soap mixture @ 55' to help stabilize well and prevent cave in. Due to collapse, well cased @ 102' with 2" polypipe casing. (10') SAND: fine grained - medium grained, trace amounts small gravel, poorly graded, tan, no odor, non plastic non cohesive (20') SAND: fine grained, silty, poorly graded, medium brown, no odor, non plastic, non cohesive. (30') SAND: fine - medium grained, silty, trace amount small gravel, poorly graded, light brown, no odor, non plastic, non cohesive (40') SAND: fine grained, silty, poorly graded, light to orangish brown, no odor, non plastic, non cohesive (50') SAND: fine grained, silty, poorly graded, light to orangish brown, no odor, non plastic, non cohesive (60') SAND: fine grained, silty, poorly graded, orangish brown, wet from injection, no odor, non plastic, non cohesive (70') SAND: fine grained, silty, poorly graded, medium brown, wet from injection, no odor, non plastic, non cohesive (80') SAND: fine grained, silty, poorly graded, medium brown, wet from injection, no odor, non plastic, non cohesive (90') SAND: fine grained, silty, poorly graded, orangish brown, wet from injection, no odor, non plastic, non cohesive (100') SAND: fine grained, silty, poorly graded, tan, wet from injection, no odor, non plastic, non cohesive AA			
Dry	-	-	N	-	-	20	SP-SM				
Dry	-	-	N	-	-	30	SP-SM				
Dry	-	-	N	-	-	40	SP-SM				
Dry	-	-	N	-	-	50	SP-SM				
Wet	-	-	N	-	-	60	SP-SM				
Wet	-	-	N	-	-	70	SP-SM				
Wet	-	-	N	-	-	80	SP-SM				
Wet	-	-	N	-	-	90	SP-SM				
Wet	-	-	N	-	-	100	SP-SM				
Wet	-	-	N	-	-	106	SP-SM				
Total Depth @ 106 feet bgs											



# RED HILLS UNIT 81H (08.01.2025)

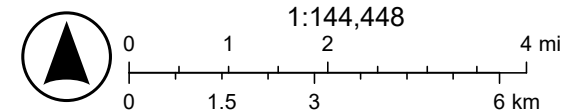


8/4/2025

USA Flood Hazard Areas

 1% Annual Chance Flood Hazard

World\_Hillshade



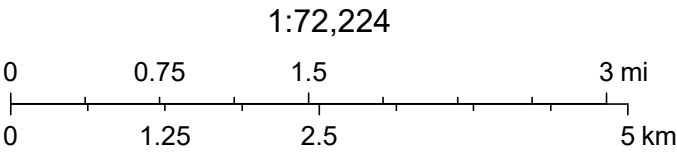
Esri, NASA, NGA, USGS, Sources: Esri, TomTom, Garmin, FAO, NOAA, USGS, (c) OpenStreetMap contributors, and the GIS User Community

# RED HILLS UNIT 81H (08.01.2025)



8/4/2025, 2:06:45 PM

- OSW Water Bodys
- OSE Streams



Esri, NASA, NGA, USGS, FEMA, Sources: Esri, TomTom, Garmin, FAO, NOAA, USGS, © OpenStreetMap contributors, and the GIS User Community, NM OSE



Sante Fe Main Office  
Phone: (505) 476-3441

General Information  
Phone: (505) 629-6116

Online Phone Directory  
<https://www.emnrd.nm.gov/ocd/contact-us>

**State of New Mexico**  
**Energy, Minerals and Natural Resources**  
**Oil Conservation Division**  
**1220 S. St Francis Dr.**  
**Santa Fe, NM 87505**

CONDITIONS

Action 536146

**CONDITIONS**

Operator: CIMAREX ENERGY CO. OF COLORADO 6001 Deauville Blvd Midland, TX 79706	OGRID: 162683
	Action Number: 536146
	Action Type: [IM-SD] Incident File Support Doc (ENV) (IM-BNF)

**CONDITIONS**

Created By	Condition	Condition Date
scwells	As the extension was requested after the 90-day due date for either a remediation plan or a remediation closure report to be submitted pursuant to 19.15.29.12.B.(1) NMAC, an extension can not be granted. Extensions must be requested prior to the due date. Therefore, remediation should still occur and a report needs to be submitted to OCD Permitting as soon as possible. Your request to use an alternative sampling plan is approved. Please include a copy of this and all notifications in the report to ensure the notifications are documented in the project file.	12/18/2025