

CARMONA RESOURCES



SITE INFORMATION

Closure Report
Bedrock Compressor Station
Incident ID: NAPP2527332663
Eddy County, New Mexico
Unit F, Sec 04, T22S, R27E
32.42313°, -104.197227°

Condensate Release
Point of Release: Flare Fire
Release Date: 09.26.2025
Volume Released: 0.40 Barrels of Condensate
Volume Recovered: 0 Barrels of Condensate

CARMONA RESOURCES



Prepared for:
Kinetik Holdings Inc
47 Conoco Rd.
Maljamar, New Mexico 88264

Prepared by:
Carmona Resources, LLC
310 West Wall Street
Suite 500
Midland, Texas 79701

310 West Wall Street, Suite 500
Midland TX, 79701
432.813.1992



TABLE OF CONTENTS

1.0 SITE INFORMATION AND BACKGROUND

2.0 SITE CHARACTERIZATION AND GROUNDWATER

3.0 NMAC REGULATORY CRITERIA

4.0 REMEDIATION ACTIVITIES

5.0 CONCLUSION & VARIANCE

FIGURES

FIGURE 1	OVERVIEW	FIGURE 2	TOPOGRAPHIC
FIGURE 3	EXCAVATION DEPTH		

APPENDICES

APPENDIX A	TABLES
APPENDIX B	PHOTOS
APPENDIX C	INITIAL C-141/NMOCD CORRESPONDENCE
APPENDIX D	SITE CHARACTERIZATION AND GROUNDWATER
APPENDIX E	LABORATORY REPORTS



November 25, 2025

Mike Bratcher
District Supervisor
Oil Conservation Division, District 2
811 S. First Street
Artesia, New Mexico 88210

Re: Closure Report
Bedrock Compressor Station (09.26.2025)
Kinetik Holdings Inc
Incident ID: NAPP2527332663
Site Location: Unit F, S04, T22S, R27E
32.42313°, -104.197227°
Eddy County, New Mexico

Mr. Bratcher:

On behalf of Kinetik Holdings Inc. (Kinetik, formerly known as Frontier Field Services, LLC) Carmona Resources, LLC has prepared this letter to document remediation activities for the Bedrock Compressor Station (09.26.2025) flare fire. The site is located at 32.42313, -104.197227 within Unit F, S04, T22S, R27E, in Eddy County, New Mexico (Figure 1 and Figure 2).

1.0 Site Information and Background

Based on the initial C-141 obtained from the New Mexico Oil Conservation Division (NMOCD), the release was discovered on September 26, 2025, due to a flare fire. It resulted in approximately zero point forty (0.40) barrels of condensate being released and zero (0) barrels of condensate being recovered. The impacted area occurred on the pad, shown in Figure 3. The initial C-141 form is attached in Appendix C.

2.0 Site Characterization and Groundwater

The site is located within a medium karst area. Based on a review of the New Mexico Office of State Engineers and USGS databases, there is no known water sources within a 0.50-mile radius of the location. The nearest well is located approximately 0.48 miles Northeast of the site in S04, T22S, R27E and was drilled in 1998. The depth of groundwater was 30.63' feet below ground surface (bgs). A copy of the associated well log is attached in Appendix D.

3.0 NMAC Regulatory Criteria

Per the NMOCD regulatory criteria established in 19.15.29.12 NMAC, the following criteria were utilized in assessing the site.

- Benzene: 10 milligrams per kilogram (mg/kg).
- Benzene, toluene, ethylbenzene, and total xylenes (BTEX): 50 mg/kg.
- TPH: 100 mg/kg (GRO + DRO + MRO).
- Chloride: 600 mg/kg.



4.0 Remediation Activities

On October 14, 2025, Carmona Resources personnel were onsite to supervise the remediation activities and to collect confirmation samples. Before collecting composite confirmation samples, the NMOCD division office was notified via NMOCD portal on October 9, 2025, per Subsection D of 19.15.29.12 NMAC. See Appendix C. The entire impacted area was scraped to a maximum depth of 0.5'. A total of three (3) confirmation floor samples (CS-1, CS-2 & CS-3) and four (4) horizontal delineation samples (H-1 through H-4) were collected every 200 square feet to ensure the proper removal of the contaminated soils. For chemical analysis, the soil samples were collected and placed directly into laboratory provided sample containers, stored on ice, and transported under the proper chain-of-custody protocol to Cardinal Laboratories in Hobbs, New Mexico. All collected samples were analyzed for TPH analysis by EPA method 8015 modified, BTEX by EPA Method 8021B, and Chloride by EPA method 4500. Copies of laboratory analysis and chain-of-custody documentation are included in Appendix E. The excavation depths and confirmation sample locations are shown in Figure 3.

All final confirmation samples were below the regulatory requirements for TPH, BTEX, and Chloride. Refer to Table 1. The excavation depth and confirmation sample locations are shown in Figure 3.

Approximately 250 square feet of area was remediated resulting in 5 cubic yards of excavated and transported offsite for proper disposal.

5.0 Conclusion & Variance

Due to the excavation not exceeding 0.5' in depth, horizontal delineation samples were collected in place of composite confirmation sidewall samples. Additionally, due to the extremely shallow nature of the surface scrape of the remediation caused by a flare fire, a variance to NMAC 19.15.29.12.D.2 is requested in relation to backfilling the excavated (scraped) area. Excess material from the western edge of the site was used to backfill the excavated area. A five-point composite sample was collected from the backfill area and submitted to the laboratory for analysis. Please see Figure 3 & Table 1 for sample locations and analytical results, respectively.

Based on the remediation results and the analytical data, no further actions are required at the site. Kinetik formally requests the closure of the spill. Kinetik will reclaim and reseed the previously remediated per NMAC 19.15.29.13 when the location is deconstructed. If you have any questions regarding this report or need additional information, please contact us at 432-813-1992.

Sincerely,
Carmona Resources, LLC

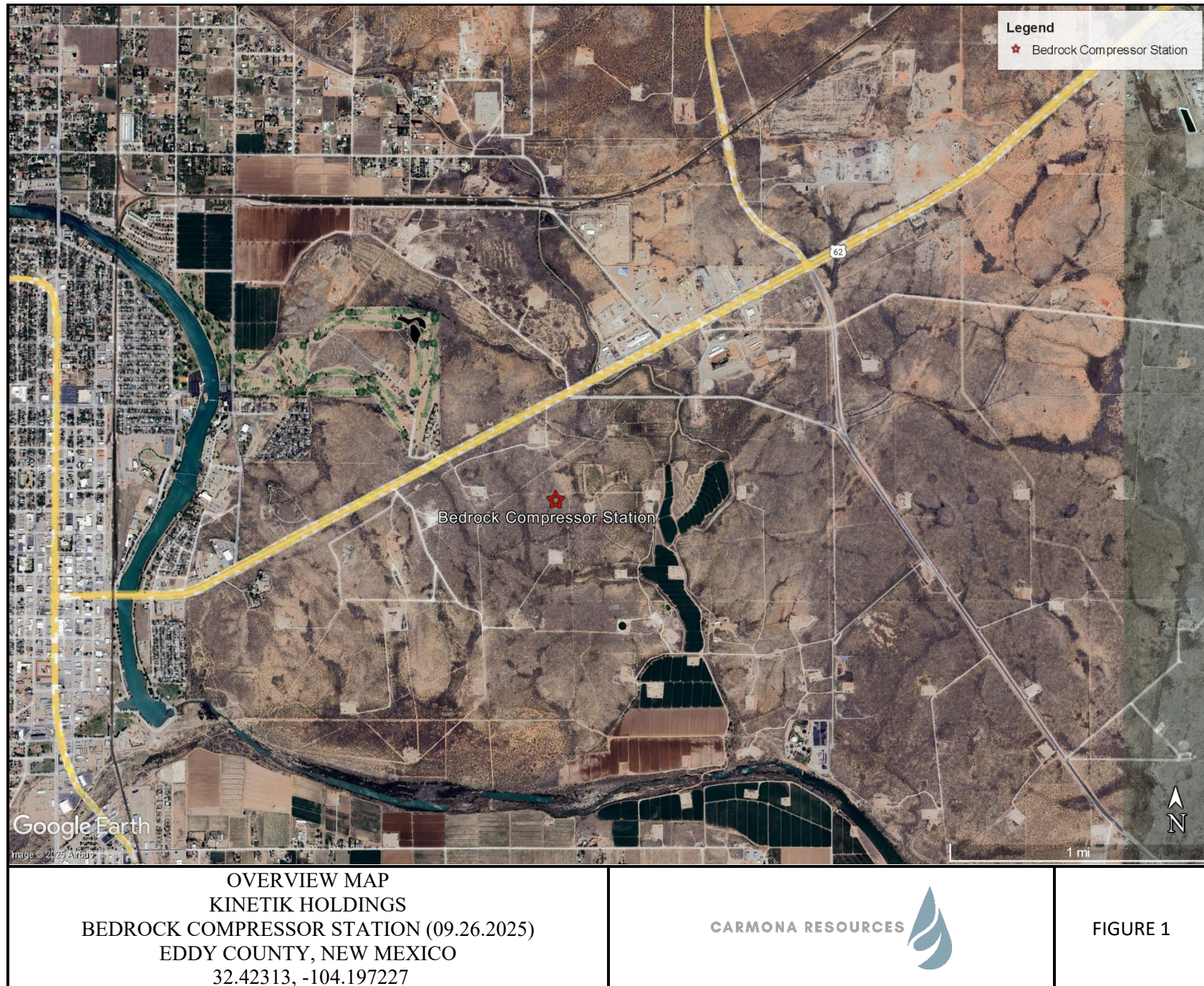
Ashton Thielke
Environmental Manager

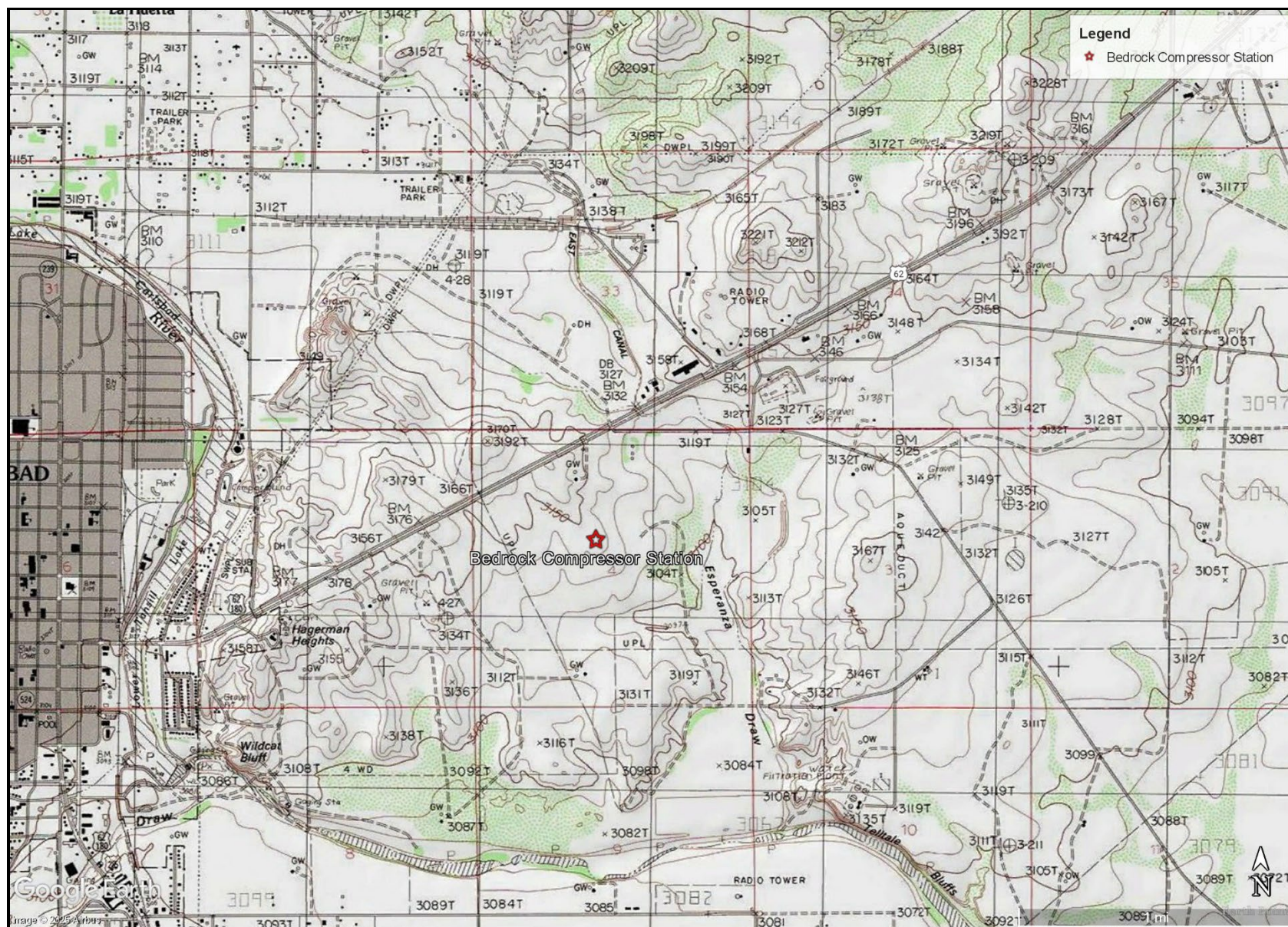
Riley Plogger
Project Manager

FIGURES

CARMONA RESOURCES







OVERVIEW MAP
 KINETIK HOLDINGS
 BEDROCK COMPRESSOR STATION (09.26.2025)
 EDDY COUNTY, NEW MEXICO
 32.42313, -104.197227

CARMONA RESOURCES



FIGURE 2



APPENDIX A

CARMONA RESOURCES



Table 1
Kinetik Holdings
Bedrock Compressor Station
Eddy County, New Mexico

Sample ID	Date	Depth (ft)	TPH (mg/kg)				Benzene (mg/kg)	Toluene (mg/kg)	Ethlybenzene (mg/kg)	Xylene (mg/kg)	Total BTEX (mg/kg)	Chloride (mg/kg)
			GRO	DRO	MRO	Total						
CS-1	10/14/2025	0.5'	<10.0	<10.0	<10.0	<10.0	<0.050	<0.050	<0.050	<0.150	<0.300	112.0
CS-2	10/14/2025	0.5'	<10.0	<10.0	<10.0	<10.0	<0.050	<0.050	<0.050	<0.150	<0.300	128.0
CS-3	10/14/2025	0.5'	<10.0	<10.0	<10.0	<10.0	<0.050	<0.050	<0.050	<0.150	<0.300	64.0
H-1	10/14/2025	0-0.5'	<10.0	<10.0	<10.0	<10.0	<0.050	<0.050	<0.050	<0.150	<0.300	64.0
H-2	10/14/2025	0-0.5'	<10.0	<10.0	<10.0	<10.0	<0.050	<0.050	<0.050	<0.150	<0.300	80.0
H-3	10/14/2025	0-0.5'	<10.0	<10.0	<10.0	<10.0	<0.050	<0.050	<0.050	<0.150	<0.300	80.0
H-4	10/14/2025	0-0.5'	<10.0	<10.0	<10.0	<10.0	<0.050	<0.050	<0.050	<0.150	<0.300	80.0
Backfill Sample	10/14/2025	*	<10.0	<10.0	<10.0	<10.0	<0.050	<0.050	<0.050	<0.150	<0.300	48.0
Regulatory Criteria ^A						100 mg/kg	10 mg/kg				50 mg/kg	600 mg/kg

^A – Table 1 - 19.15.29 NMAC
mg/kg - milligram per kilogram
TPH - Total Petroleum Hydrocarbons
ft - feet
(CS)-Confirmation Sample
(H) Horizontal Sample

APPENDIX B

CARMONA RESOURCES



PHOTOGRAPHIC LOG

Kinetik Holdings Inc.

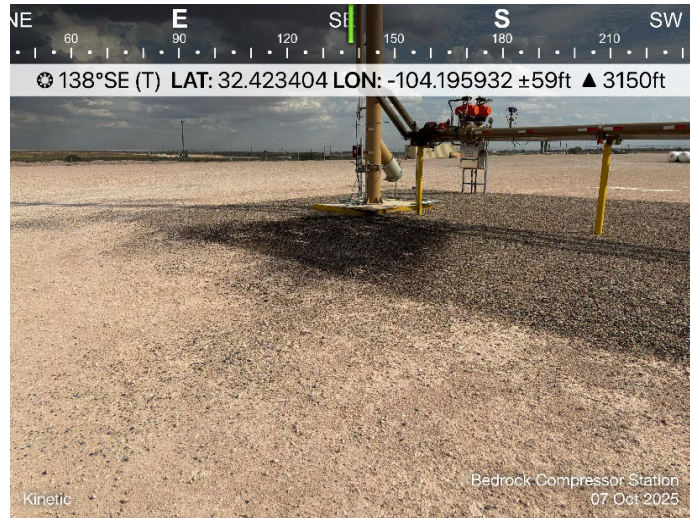
Photograph No. 1

Facility: Bedrock Compressor Station
(09.26.2025)

County: Eddy County, New Mexico

Description:

View Southwest, Area of concern.



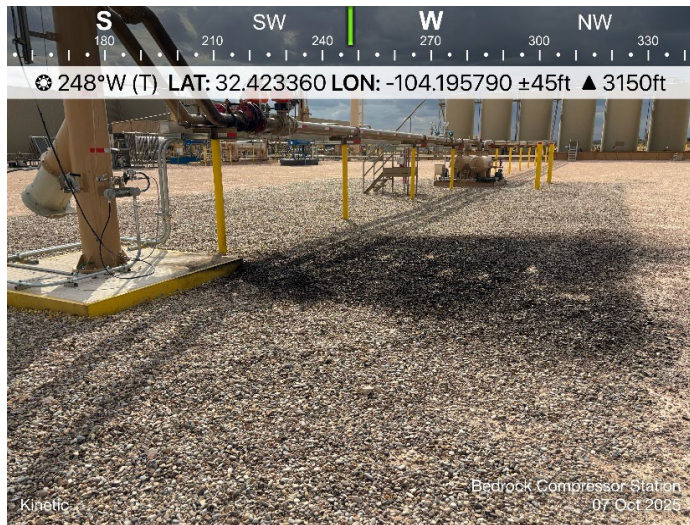
Photograph No. 2

Facility: Bedrock Compressor Station
(09.26.2025)

County: Eddy County, New Mexico

Description:

View West, Area of concern.



Photograph No. 3

Facility: Bedrock Compressor Station
(09.26.2025)

County: Eddy County, New Mexico

Description:

View Northwest, 0.5' Scraped area of CS-1 through CS-3



PHOTOGRAPHIC LOG

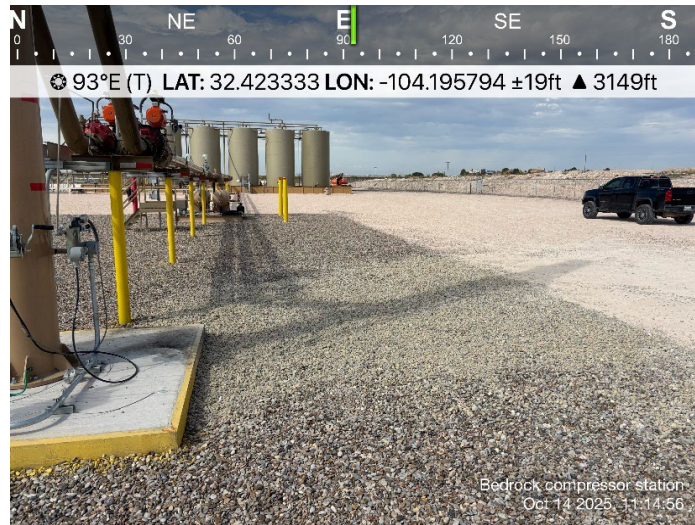
Kinetik Holdings Inc.

Photograph No. 4

Facility: Bedrock Compressor Station
(09.26.2025)

County: Eddy County, New Mexico

Description:
View East, 0.5' Scraped area of CS-1 through CS-3



Photograph No. 5

Facility: Bedrock Compressor Station
(09.26.2025)

County: Eddy County, New Mexico

Description:
View West, 0.5' Scraped area of CS-1 through CS-3



APPENDIX C

CARMONA RESOURCES



Sante Fe Main Office
Phone: (505) 476-3441

General Information
Phone: (505) 629-6116

Online Phone Directory
<https://www.emnrd.nm.gov/ocd/contact-us>

State of New Mexico
Energy, Minerals and Natural Resources
Oil Conservation Division
1220 S. St Francis Dr.
Santa Fe, NM 87505

QUESTIONS

Action 510552

QUESTIONS

Operator: FRONTIER FIELD SERVICES, LLC 303 Veterans Airpark Lane Midland, TX 79705	OGRID: 221115
	Action Number: 510552
	Action Type: [NOTIFY] Notification Of Release (NOR)

QUESTIONS

Location of Release Source <i>Please answer all the questions in this group.</i>	
Site Name	Bedrock Compressor Station
Date Release Discovered	09/26/2025
Surface Owner	Private

Incident Details <i>Please answer all the questions in this group.</i>	
Incident Type	Fire
Did this release result in a fire or is the result of a fire	Yes
Did this release result in any injuries	No
Has this release reached or does it have a reasonable probability of reaching a watercourse	No
Has this release endangered or does it have a reasonable probability of endangering public health	No
Has this release substantially damaged or will it substantially damage property or the environment	No
Is this release of a volume that is or may with reasonable probability be detrimental to fresh water	No

Nature and Volume of Release <i>Material(s) released, please answer all that apply below. Any calculations or specific justifications for the volumes provided should be attached to the follow-up C-141 submission.</i>	
Crude Oil Released (bbls) Details	Not answered.
Produced Water Released (bbls) Details	Not answered.
Is the concentration of chloride in the produced water >10,000 mg/l	Not answered.
Condensate Released (bbls) Details	Cause: Fire Other (Specify) Condensate Released: 0 BBL Recovered: 0 BBL Lost: 0 BBL.
Natural Gas Vented (Mcf) Details	Not answered.
Natural Gas Flared (Mcf) Details	Not answered.
Other Released Details	Not answered.
Are there additional details for the questions above (i.e. any answer containing Other, Specify, Unknown, and/or Fire, or any negative lost amounts)	Not answered.

Sante Fe Main Office
Phone: (505) 476-3441

General Information
Phone: (505) 629-6116

Online Phone Directory
<https://www.emnrd.nm.gov/ocd/contact-us>

State of New Mexico
Energy, Minerals and Natural Resources
Oil Conservation Division
1220 S. St Francis Dr.
Santa Fe, NM 87505

QUESTIONS, Page 2

Action 510552

QUESTIONS (continued)

Operator: FRONTIER FIELD SERVICES, LLC 303 Veterans Airpark Lane Midland, TX 79705	OGRID: 221115
	Action Number: 510552
	Action Type: [NOTIFY] Notification Of Release (NOR)

QUESTIONS

Nature and Volume of Release (continued)	
Is this a gas only submission (i.e. only significant Mcf values reported)	More volume information must be supplied to determine if this will be treated as a "gas only" report.
Was this a major release as defined by Subsection A of 19.15.29.7 NMAC	Yes
Reasons why this would be considered a submission for a notification of a major release	From paragraph A. "Major release" determine using: (2) an unauthorized release of a volume that: (a) results in a fire or is the result of a fire.
With the implementation of the 19.15.27 NMAC (05/25/2021), venting and/or flaring of natural gas (i.e. gas only) are to be submitted on the C-129 form.	

Initial Response

The responsible party must undertake the following actions immediately unless they could create a safety hazard that would result in injury.

The source of the release has been stopped	True
The impacted area has been secured to protect human health and the environment	True
Released materials have been contained via the use of berms or dikes, absorbent pads, or other containment devices	True
All free liquids and recoverable materials have been removed and managed appropriately	True
If all the actions described above have not been undertaken, explain why	Not answered.

Per Paragraph 4 of Subsection B of 19.15.29.8 NMAC the responsible party may commence remediation immediately after discovery of a release. If remediation has begun, please prepare and attach a narrative of actions to date in the follow-up C-141 submission. If remedial efforts have been successfully completed or if the release occurred within a lined containment area (see 19.15.29.11(A)(5)(a) NMAC), please prepare and attach all information needed for closure evaluation in the follow-up C-141 submission.

Sante Fe Main Office
Phone: (505) 476-3441

General Information
Phone: (505) 629-6116

Online Phone Directory
<https://www.emnrd.nm.gov/ocd/contact-us>

State of New Mexico
Energy, Minerals and Natural Resources
Oil Conservation Division
1220 S. St Francis Dr.
Santa Fe, NM 87505

ACKNOWLEDGMENTS

Action 510552

ACKNOWLEDGMENTS

Operator: FRONTIER FIELD SERVICES, LLC 303 Veterans Airpark Lane Midland, TX 79705	OGRID: 221115
	Action Number: 510552
	Action Type: [NOTIFY] Notification Of Release (NOR)

ACKNOWLEDGMENTS

<input checked="" type="checkbox"/>	I acknowledge that I am authorized to submit notification of a release on behalf of my operator.
<input checked="" type="checkbox"/>	I acknowledge that upon submitting this application, I will be creating a new incident file (assigned to my operator) to track the notification(s) and corrective action(s) for a release, pursuant to NMAC 19.15.29.
<input checked="" type="checkbox"/>	I acknowledge that creating a new incident file will require my operator to file subsequent submission(s) of form "C-141, Application for administrative approval of a release notification and corrective action", pursuant to NMAC 19.15.29.
<input checked="" type="checkbox"/>	I hereby certify that the information given above is true and complete to the best of my knowledge and understand that pursuant to OCD rules and regulations all operators are required to report and/or file certain release notifications and perform corrective actions for releases which may endanger public health or the environment.
<input checked="" type="checkbox"/>	I acknowledge the fact that the acceptance of a C-141 report by the OCD does not relieve the operator of liability should their operations have failed to adequately investigate and remediate contamination that pose a threat to groundwater, surface water, human health or the environment.
<input checked="" type="checkbox"/>	I acknowledge the fact that, in addition, OCD acceptance of a C-141 report does not relieve the operator of responsibility for compliance with any other federal, state, or local laws and/or regulations.

Sante Fe Main Office
Phone: (505) 476-3441

General Information
Phone: (505) 629-6116

Online Phone Directory
<https://www.emnrd.nm.gov/ocd/contact-us>

State of New Mexico
Energy, Minerals and Natural Resources
Oil Conservation Division
1220 S. St Francis Dr.
Santa Fe, NM 87505

CONDITIONS

Action 510552

CONDITIONS

Operator: FRONTIER FIELD SERVICES, LLC 303 Veterans Airpark Lane Midland, TX 79705	OGRID: 221115
	Action Number: 510552
	Action Type: [NOTIFY] Notification Of Release (NOR)

CONDITIONS

Created By	Condition	Condition Date
sorozco	When submitting future reports regarding this release, please submit the calculations used or specific justification for the volumes reported on the initial C-141.	9/30/2025

Liquid Volume Release Report

Liquid Release Volume Calculator							
Date:	9/26/2025						
Site or Line Name:	Bedrock Compressor Station						
Soil Type	Porosity	Length	Width	Depth (.083 per inch)	Cubic Feet	Estimated Barrels	Soil Type
Clay	0.15				0	0.00	Clay
Sandy Clay	0.12				0	0.00	Sandy Clay
Silt	0.16				0	0.00	Silt
Fine Sand	0.16				0	0.00	Fine Sand
Medium Sand	0.25				0	0.00	Medium Sand
Coarse Sand	0.26				0	0.00	Coarse Sand
Gravely Sand	0.26				0	0.00	Gravely Sand
Fine Gravel	0.26				0	0.00	Fine Gravel
Medium Gravel	0.20				0	0.00	Medium Gravel
Coarse Gravel	0.18	15	20	0.0415	12.45	0.40	Coarse Gravel
Sandstone	0.25				0	0.00	Sandstone
Siltstone	0.18				0	0.00	Siltstone
Limestone	0.13				0	0.00	Limestone
Basalt	0.19				0	0.00	Basalt
Standing Liquids	X	0	0	0	0	0.00	Standing Liquids

Choose the one prevailing ground type for estimating spill volumes at a single location. Standing liquids are figured separately using the green cell.

Note that the depth should be measured in feet and tenths of feet (1 inch = .083)

Cubic Feet = L x W x D

Estimated Barrels = ((Cubic Feet x Porosity) / 5.61)

Sante Fe Main Office
Phone: (505) 476-3441

General Information
Phone: (505) 629-6116

Online Phone Directory
<https://www.emnrd.nm.gov/ocd/contact-us>

State of New Mexico
Energy, Minerals and Natural Resources
Oil Conservation Division
1220 S. St Francis Dr.
Santa Fe, NM 87505

QUESTIONS

Action 510562

QUESTIONS

Operator: FRONTIER FIELD SERVICES, LLC 303 Veterans Airpark Lane Midland, TX 79705	OGRID: 221115
	Action Number: 510562
	Action Type: [C-141] Initial C-141 (C-141-v-Initial)

QUESTIONS

Prerequisites	
Incident ID (n#)	nAPP2527332663
Incident Name	NAPP2527332663 BEDROCK COMPRESSOR STATION @ FAPP2504532419
Incident Type	Fire
Incident Status	Initial C-141 Received
Incident Facility	[fAPP2504532419] Kinetik NM Gas Gathering

Location of Release Source

Please answer all the questions in this group.

Site Name	BEDROCK COMPRESSOR STATION
Date Release Discovered	09/26/2025
Surface Owner	Private

Incident Details

Please answer all the questions in this group.

Incident Type	Fire
Did this release result in a fire or is the result of a fire	Yes
Did this release result in any injuries	No
Has this release reached or does it have a reasonable probability of reaching a watercourse	No
Has this release endangered or does it have a reasonable probability of endangering public health	No
Has this release substantially damaged or will it substantially damage property or the environment	No
Is this release of a volume that is or may with reasonable probability be detrimental to fresh water	No

Nature and Volume of Release

Material(s) released, please answer all that apply below. Any calculations or specific justifications for the volumes provided should be attached to the follow-up C-141 submission.

Crude Oil Released (bbls) Details	Not answered.
Produced Water Released (bbls) Details	Not answered.
Is the concentration of chloride in the produced water >10,000 mg/l	No
Condensate Released (bbls) Details	Cause: Fire Other (Specify) Condensate Released: 0 BBL Recovered: 0 BBL Lost: 0 BBL.
Natural Gas Vented (Mcf) Details	Not answered.
Natural Gas Flared (Mcf) Details	Not answered.
Other Released Details	Not answered.
Are there additional details for the questions above (i.e. any answer containing Other, Specify, Unknown, and/or Fire, or any negative lost amounts)	Not answered.

Sante Fe Main Office
Phone: (505) 476-3441

General Information
Phone: (505) 629-6116

Online Phone Directory
<https://www.emnrd.nm.gov/ocd/contact-us>

State of New Mexico
Energy, Minerals and Natural Resources
Oil Conservation Division
1220 S. St Francis Dr.
Santa Fe, NM 87505

QUESTIONS, Page 2

Action 510562

QUESTIONS (continued)

Operator: FRONTIER FIELD SERVICES, LLC 303 Veterans Airpark Lane Midland, TX 79705	OGRID: 221115
	Action Number: 510562
	Action Type: [C-141] Initial C-141 (C-141-v-Initial)

QUESTIONS

Nature and Volume of Release (continued)	
Is this a gas only submission (i.e. only significant Mcf values reported)	More info needed to determine if this will be treated as a "gas only" report.
Was this a major release as defined by Subsection A of 19.15.29.7 NMAC	Yes
Reasons why this would be considered a submission for a notification of a major release	From paragraph A. "Major release" determine using: (2) an unauthorized release of a volume that: (a) results in a fire or is the result of a fire.
<i>With the implementation of the 19.15.27 NMAC (05/25/2021), venting and/or flaring of natural gas (i.e. gas only) are to be submitted on the C-129 form.</i>	

Initial Response

The responsible party must undertake the following actions immediately unless they could create a safety hazard that would result in injury.

The source of the release has been stopped	True
The impacted area has been secured to protect human health and the environment	True
Released materials have been contained via the use of berms or dikes, absorbent pads, or other containment devices	True
All free liquids and recoverable materials have been removed and managed appropriately	True
If all the actions described above have not been undertaken, explain why	Not answered.

Per Paragraph (4) of Subsection B of 19.15.29.8 NMAC the responsible party may commence remediation immediately after discovery of a release. If remediation has begun, please prepare and attach a narrative of actions to date in the follow-up C-141 submission. If remedial efforts have been successfully completed or if the release occurred within a lined containment area (see Subparagraph (a) of Paragraph (5) of Subsection A of 19.15.29.11 NMAC), please prepare and attach all information needed for closure evaluation in the follow-up C-141 submission.

I hereby certify that the information given above is true and complete to the best of my knowledge and understand that pursuant to OCD rules and regulations all operators are required to report and/or file certain release notifications and perform corrective actions for releases which may endanger public health or the environment. The acceptance of a C-141 report by the OCD does not relieve the operator of liability should their operations have failed to adequately investigate and remediate contamination that pose a threat to groundwater, surface water, human health or the environment. In addition, OCD acceptance of a C-141 report does not relieve the operator of responsibility for compliance with any other federal, state, or local laws and/or regulations.

I hereby agree and sign off to the above statement	Name: Sebastian Orozco Title: Sr. Environmental Specialist Email: sorozco@kinetik.com Date: 09/30/2025
--	---

Sante Fe Main Office
Phone: (505) 476-3441

General Information
Phone: (505) 629-6116

Online Phone Directory
<https://www.emnrd.nm.gov/ocd/contact-us>

State of New Mexico
Energy, Minerals and Natural Resources
Oil Conservation Division
1220 S. St Francis Dr.
Santa Fe, NM 87505

QUESTIONS, Page 3

Action 510562

QUESTIONS (continued)

Operator: FRONTIER FIELD SERVICES, LLC 303 Veterans Airpark Lane Midland, TX 79705	OGRID: 221115
	Action Number: 510562
	Action Type: [C-141] Initial C-141 (C-141-v-Initial)

QUESTIONS

Site Characterization	
<i>Please answer all the questions in this group (only required when seeking remediation plan approval and beyond). This information must be provided to the appropriate district office no later than 90 days after the release discovery date.</i>	
What is the shallowest depth to groundwater beneath the area affected by the release in feet below ground surface (ft bgs)	Not answered.
What method was used to determine the depth to ground water	Not answered.
Did this release impact groundwater or surface water	Not answered.
What is the minimum distance, between the closest lateral extents of the release and the following surface areas:	
A continuously flowing watercourse or any other significant watercourse	Not answered.
Any lakebed, sinkhole, or playa lake (measured from the ordinary high-water mark)	Not answered.
An occupied permanent residence, school, hospital, institution, or church	Not answered.
A spring or a private domestic fresh water well used by less than five households for domestic or stock watering purposes	Not answered.
Any other fresh water well or spring	Not answered.
Incorporated municipal boundaries or a defined municipal fresh water well field	Not answered.
A wetland	Not answered.
A subsurface mine	Not answered.
An (non-karst) unstable area	Not answered.
Categorize the risk of this well / site being in a karst geology	Not answered.
A 100-year floodplain	Not answered.
Did the release impact areas not on an exploration, development, production, or storage site	Not answered.

Remediation Plan	
<i>Please answer all the questions that apply or are indicated. This information must be provided to the appropriate district office no later than 90 days after the release discovery date.</i>	
Requesting a remediation plan approval with this submission	No
<i>The OCD recognizes that proposed remediation measures may have to be minimally adjusted in accordance with the physical realities encountered during remediation. If the responsible party has any need to significantly deviate from the remediation plan proposed, then it should consult with the division to determine if another remediation plan submission is required.</i>	

Sante Fe Main Office
Phone: (505) 476-3441

General Information
Phone: (505) 629-6116

Online Phone Directory
<https://www.emnrd.nm.gov/ocd/contact-us>

State of New Mexico
Energy, Minerals and Natural Resources
Oil Conservation Division
1220 S. St Francis Dr.
Santa Fe, NM 87505

CONDITIONS

Action 510562

CONDITIONS

Operator: FRONTIER FIELD SERVICES, LLC 303 Veterans Airpark Lane Midland, TX 79705	OGRID: 221115
	Action Number: 510562
	Action Type: [C-141] Initial C-141 (C-141-v-Initial)

CONDITIONS

Created By	Condition	Condition Date
rhamlet	None	9/30/2025

Sante Fe Main Office
Phone: (505) 476-3441

General Information
Phone: (505) 629-6116

Online Phone Directory
<https://www.emnrd.nm.gov/ocd/contact-us>

State of New Mexico
Energy, Minerals and Natural Resources
Oil Conservation Division
1220 S. St Francis Dr.
Santa Fe, NM 87505

QUESTIONS

Action 513514

QUESTIONS

Operator: FRONTIER FIELD SERVICES, LLC 303 Veterans Airpark Lane Midland, TX 79705	OGRID: 221115
	Action Number: 513514
	Action Type: [NOTIFY] Notification Of Sampling (C-141N)

QUESTIONS

Prerequisites	
Incident ID (n#)	nAPP2527332663
Incident Name	NAPP2527332663 BEDROCK COMPRESSOR STATION @ FAPP2504532419
Incident Type	Fire
Incident Status	Initial C-141 Approved
Incident Facility	[fAPP2504532419] Kinetik NM Gas Gathering

Location of Release Source	
Site Name	BEDROCK COMPRESSOR STATION
Date Release Discovered	09/26/2025
Surface Owner	Private

Sampling Event General Information	
<i>Please answer all the questions in this group.</i>	
What is the sampling surface area in square feet	246
What is the estimated number of samples that will be gathered	10
Sampling date pursuant to Subparagraph (a) of Paragraph (1) of Subsection D of 19.15.29.12 NMAC	10/14/2025
Time sampling will commence	08:00 AM
Please provide any information necessary for observers to contact samplers	Carmona Resources – 432-701-5475
Please provide any information necessary for navigation to sampling site	“(32.42313,-104.197227”) Carmona Resources will be onsite to collect confirmation floor samples from the recently scraped release area. The contaminated area was scraped to a depth of 0.5' and all material was disposed of properly. Due to the excavation being less than 6 inches in depth, horizontal delineation samples will be collected in place of composite confirmation sidewall samples. Additionally, due to the extremely shallow nature of the surface scrape of the remediation caused by a flare fire, a variance to NMAC 19.15.29.12.D.2 will be requested in relation to backfilling the “excavated” (scraped) area. The well pad will still be covered with caliche until P/A activities or downsizing, at which point 19.15.29.13 will be enacted.”

Sante Fe Main Office
Phone: (505) 476-3441

General Information
Phone: (505) 629-6116

Online Phone Directory
<https://www.emnrd.nm.gov/oed/contact-us>

State of New Mexico
Energy, Minerals and Natural Resources
Oil Conservation Division
1220 S. St Francis Dr.
Santa Fe, NM 87505

CONDITIONS

Action 513514

CONDITIONS

Operator: FRONTIER FIELD SERVICES, LLC 303 Veterans Airpark Lane Midland, TX 79705	OGRID: 221115
	Action Number: 513514
	Action Type: [NOTIFY] Notification Of Sampling (C-141N)

CONDITIONS

Created By	Condition	Condition Date
sorozco	Failure to notify the OCD of sampling events including any changes in date/time per the requirements of 19.15.29.12.D.(1).(a) NMAC, may result in the remediation closure samples not being accepted.	10/9/2025
sorozco	If confirmation sampling is going to take place over multiple days, individual C-141N applications must be submitted for each sampling date. Date ranges are not currently accepted on the C-141N application.	10/9/2025

APPENDIX D

CARMONA RESOURCES

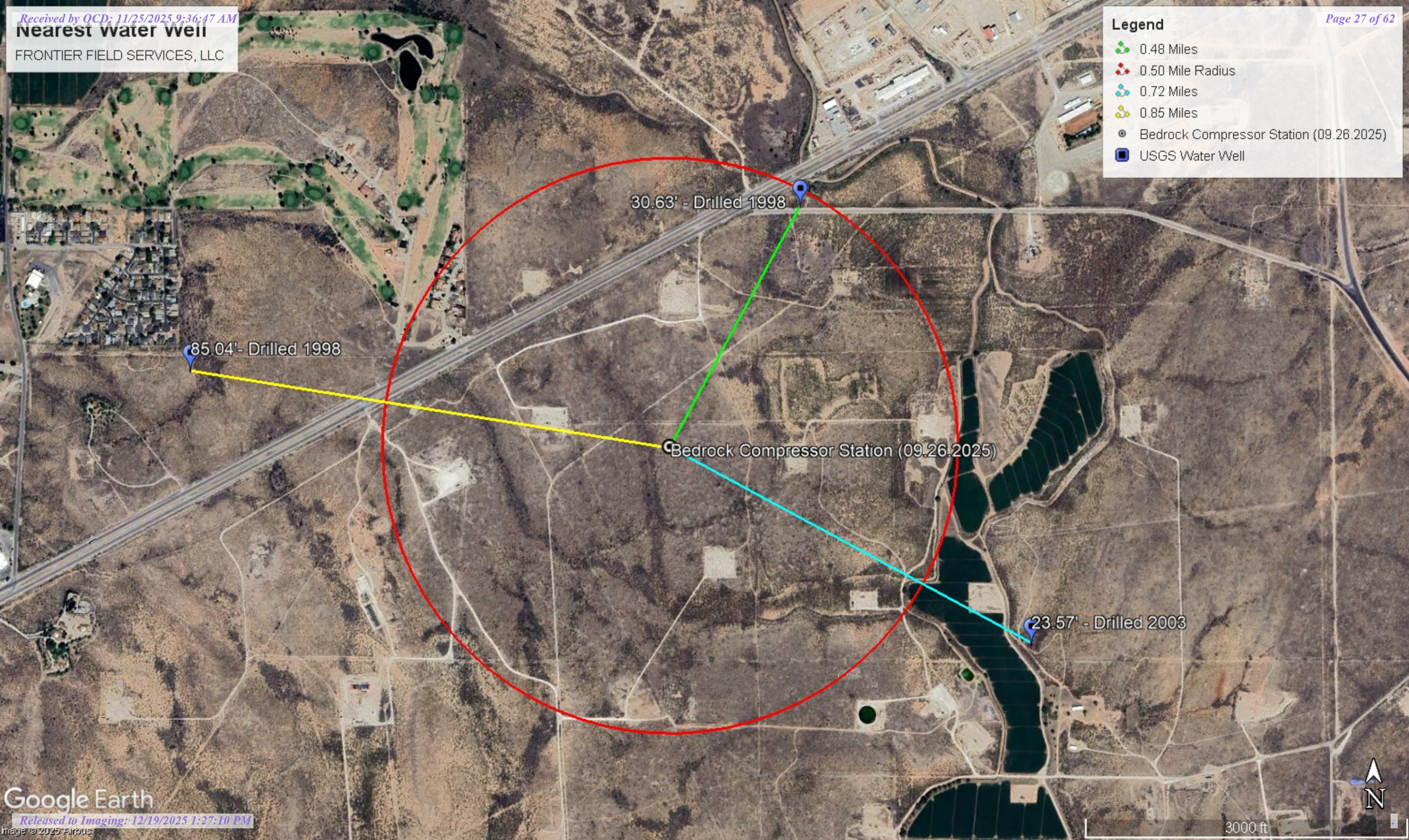


Nearest water well

FRONTIER FIELD SERVICES, LLC

Legend

- 0.48 Miles
- 0.50 Mile Radius
- 0.72 Miles
- 0.85 Miles
- Bedrock Compressor Station (09.26.2025)
- USGS Water Well



30.63' - Drilled 1998

85.04' - Drilled 1998

Bedrock Compressor Station (09.26.2025)

23.57' - Drilled 2003



Medium Karst

FRONTIER FIELD SERVICES, LLC

Legend

- Bedrock Compressor Station (09.26.2025)
- Medium

● Bedrock Compressor Station (09.26.2025)





New Mexico Office of the State Engineer

Water Column/Average Depth to Water

(A CLW##### in the POD suffix indicates the POD has been replaced & no longer serves a water right file.)

(R=POD has been replaced, O=orphaned, C=the file is closed)

(quarters are smallest to largest)

POD Number	Code	Sub basin	County	Q64	Q16	Q4	Sec	Tws	Range	X	Y	Map	(meters)	(In feet)		
													Distance	Well Depth	Depth Water	Water Column
C 00589		CUB	ED	NE	SE	SE	04	22S	27E	576412.0	3586974.0 *	●	1137			
C 02193		C	ED			SE	32	21S	27E	574476.0	3588675.0 *	●	1452	55	15	40
C 00479		C	ED			SW	03	22S	27E	576919.0	3587082.0 *	●	1540	200		
C 04457 POD4		CUB	ED	NW	SW	NW	33	21S	27E	574935.8	3589466.8	●	1923	20	15	5
C 00197		C	ED				32	21S	27E	574067.0	3589068.0 *	●	2019	300		
C 00751		C	ED				32	21S	27E	574067.0	3589068.0 *	●	2019	325	15	310
C 00717		C	ED	SW	SW	NW	05	22S	27E	573369.0	3587548.0 *	●	2108	60	32	28
C 00783		C	ED	SW	NW	SW	05	22S	27E	573372.0	3587136.0 *	●	2159	135	73	62
C 00344		C	ED		SW	SW	32	21S	27E	573464.0	3588465.0 *	●	2181	180	17	163
C 02009		C	ED		SW	SW	32	21S	27E	573464.0	3588465.0 *	●	2181	50	32	18
C 02063		C	ED				08	22S	27E	574089.0	3585825.0 *	●	2269	45	25	20
C 00566		C	ED	NE	NE	NE	32	21S	27E	574773.0	3589785.0 *	●	2275	323	18	305
C 00632		CUB	ED	NE	NE	NE	32	21S	27E	574773.0	3589785.0 *	●	2275	270	30	240
C 01493		C	ED	NE	SW	SW	09	22S	27E	575205.0	3585337.0 *	●	2300	60	18	42
C 00092 A	O	CUB	ED	NW	SW	SE	09	22S	27E	575815.0	3585346.0 *	●	2300	200		
C 02899		C	ED	NW	SW	SE	09	22S	27E	575815.0	3585346.0 *	●	2300	33	22	11
C 03038		C	ED	NW	SW	SE	09	22S	27E	575815.0	3585346.0 *	●	2300	43	15	28
C 03335		C	ED	SE	NW	SW	29	21S	27E	573636.5	3589020.8	●	2311	225	31	194
C 04312 POD4		CUB	ED	SE	NE	NE	06	22S	27E	573132.8	3587937.8	●	2364	25	6	19
C 02206		C	ED	NE	SE	SE	08	22S	27E	574800.0	3585333.0 *	●	2385	60	18	42
C 02374		C	ED		SW	SE	09	22S	27E	575916.0	3585247.0 *	●	2414	54	15	39
C 02379		C	ED		SW	SE	09	22S	27E	575916.0	3585247.0 *	●	2414	55	20	35
C 03029		C	ED		SW	SE	09	22S	27E	575916.0	3585247.0 *	●	2414	45	18	27
C 00660		C	ED	NE	NW	NE	32	21S	27E	574368.0	3589780.0 *	●	2426	325	14	311
C 04312 POD3		CUB	CH	SW	NE	NE	06	22S	27E	573070.7	3587968.1	●	2430	25	6	19
C 04954 POD1		C	ED	SW	SE	NE	34	21S	27E	577530.5	3588953.1	●	2448	100	60	40
C 03084		C	ED	SW	NW	SE	08	22S	27E	574192.0	3585532.0 *	●	2452	112	14	98
C 04145 POD1		C	ED	SE	NE	SW	08	22S	27E	574047.9	3585604.1	●	2471	119	81	38
C 00092		CUB	ED	SE	SW	SW	09	22S	27E	575205.0	3585137.0 *	●	2498	70	40	30
C 00092 CLW193601	O	CUB	ED	SE	SW	SW	09	22S	27E	575205.0	3585137.0 *	●	2498	90	40	50
C 00092 CLW193956	O	CUB	ED	SE	SW	SW	09	22S	27E	575205.0	3585137.0 *	●	2498	90	40	50
C 00092 CLW193966	O	CUB	ED	SE	SW	SW	09	22S	27E	575205.0	3585137.0 *	●	2498	90	40	50

Average Depth to Water: **27 feet**

Minimum Depth: **6 feet**

Maximum Depth: **81 feet**

Record Count: 32

UTM Filters (in meters):

October 7, 2025 03:35 PM MST

Page 1 of 2

Water Column/Average Depth to Water

Easting: 575476.00

Northing: 3587621.00

Radius: 2500

* UTM location was derived from PLSS - see Help

The data is furnished by the NMOSE/ISC and is accepted by the recipient with the expressed understanding that the OSE/ISC make no warranties, expressed or implied, concerning the accuracy, completeness, reliability, usability, or suitability for any particular purpose of the data.



USGS Home
Contact USGS
Search USGS

National Water Information System: Web Interface

USGS Water Resources

Data Category:
Groundwater

Geographic Area:
New Mexico

GO

Click to hideNews Bulletins

- Due to a lapse in government funding, the majority of USGS websites will not be updated except to provide important public safety information. Websites displaying real-time water data will be updated with limited support. For more information please see www.doi.gov/shutdown.
- Explore the [NEW USGS National Water Dashboard](#) interactive map to access real-time water data from over 13,500 stations nationwide.

Groundwater levels for New Mexico

Click to hide state-specific text

i Important: [Next Generation Monitoring Location Page](#)

Search Results -- 1 sites found

Agency code = usgs
site_no list =

- 322545104113601

Minimum number of levels = 1
[Save file of selected sites](#) to local disk for future upload

USGS 322545104113601 22S.27E.04.21123

Eddy County, New Mexico
Latitude 32°25'45", Longitude 104°11'36" NAD27
Land-surface elevation 3,125.0 feet above NGVD29
The depth of the well is 49.0 feet below land surface.
This well is completed in the Other aquifers (N9999OTHER) national aquifer.

Output formats

Table of data
Tab-separated data
Graph of data
Reselect period

Date	Time	? Water-level date-time accuracy	? Parameter code	Water level, feet below land surface	Water level, feet above specific vertical datum	Referenced vertical datum	? Status	? Method of measurement	? Measuring agency	? Source of measurement	? Water-level approval status
1993-01-05			D	62610	3100.01	NGVD29	1	S			A
1993-01-05			D	62611	3101.57	NAVD88	1	S			A
1993-01-05			D	72019	24.99		1	S			A
1998-01-27			D	62610	3094.37	NGVD29	1	S			A
1998-01-27			D	62611	3095.93	NAVD88	1	S			A
1998-01-27			D	72019	30.63		1	S			A

Explanation

Section	Code	Description
Water-level date-time accuracy	D	Date is accurate to the Day
Parameter code	62610	Groundwater level above NGVD 1929, feet
Parameter code	62611	Groundwater level above NAVD 1988, feet
Parameter code	72019	Depth to water level, feet below land surface
Referenced vertical datum	NAVD88	North American Vertical Datum of 1988
Referenced vertical datum	NGVD29	National Geodetic Vertical Datum of 1929
Status	1	Static
Method of measurement	S	Steel-tape measurement.
Measuring agency		Not determined
Source of measurement		Not determined
Water-level approval status	A	Approved for publication -- Processing and review completed.

[Questions or Comments](#)
[Help](#)
[Data Tips](#)
[Explanation of terms](#)
[Subscribe for system changes](#)

[Accessibility](#) [FOIA](#) [Privacy](#) [Policies and Notices](#)
[U.S. Department of the Interior](#) | [U.S. Geological Survey](#)
Title: Groundwater for New Mexico: Water Levels
URL: <https://nwis.waterdata.usgs.gov/nm/nwis/gwlevels?>

Page Contact Information: [New Mexico Water Data Maintainer](#)
Page Last Modified: 2025-10-07 17:44:50 EDT
0.37 0.31 nadww01





USGS Home
Contact USGS
Search USGS

National Water Information System: Web Interface

USGS Water Resources

Data Category:
Groundwater

Geographic Area:
New Mexico

GO

Click to hideNews Bulletins

- Due to a lapse in government funding, the majority of USGS websites will not be updated except to provide important public safety information. Websites displaying real-time water data will be updated with limited support. For more information please see www.doi.gov/shutdown.
- Explore the *NEW* [USGS National Water Dashboard](#) interactive map to access real-time water data from over 13,500 stations nationwide.

Groundwater levels for New Mexico

Click to hide state-specific text

i Important: [Next Generation Monitoring Location Page](#)

Search Results -- 1 sites found

Agency code = usgs
site_no list =

- 322505104111101

Minimum number of levels = 1
[Save file of selected sites](#) to local disk for future upload

USGS 322505104111101 22S.27E.04.44231

Eddy County, New Mexico
Latitude 32°25'05", Longitude 104°11'11" NAD27
Land-surface elevation 3,089 feet above NAVD88
This well is completed in the Other aquifers (N9999OTHER) national aquifer.
This well is completed in the Alluvium, Bolson Deposits and Other Surface Deposits (110AVMB) local aquifer.

Output formats											
Table of data											
Tab-separated data											
Graph of data											
Reselect period											
Date	Time	? Water-level date-time accuracy	? Parameter code	Water level, feet below land surface	Water level, feet above specific vertical datum	Referenced vertical datum	? Status	? Method of measurement	? Measuring agency	? Source of measurement	? Water-level approval status
1983-01-17			D 62610		3065.24	NGVD29	1	Z			A
1983-01-17			D 62611		3066.80	NAVD88	1	Z			A
1983-01-17			D 72019	22.20			1	Z			A
1988-02-18			D 62610		3066.09	NGVD29	1	Z			A
1988-02-18			D 62611		3067.65	NAVD88	1	Z			A
1988-02-18			D 72019	21.35			1	Z			A
1993-01-05			D 62610		3068.98	NGVD29	1	S			A
1993-01-05			D 62611		3070.54	NAVD88	1	S			A
1993-01-05			D 72019	18.46			1	S			A
1995-07-11			D 62610		3069.95	NGVD29	1	S			A
1995-07-11			D 62611		3071.51	NAVD88	1	S			A
1995-07-11			D 72019	17.49			1	S			A
1996-01-22			D 62610		3068.97	NGVD29	1	S			A
1996-01-22			D 62611		3070.53	NAVD88	1	S			A
1996-01-22			D 72019	18.47			1	S			A
1998-01-27			D 62610		3068.85	NGVD29	1	S			A
1998-01-27			D 62611		3070.41	NAVD88	1	S			A
1998-01-27			D 72019	18.59			1	S			A
2003-02-11			D 62610		3063.87	NGVD29	1	S	USGS	S	A
2003-02-11			D 62611		3065.43	NAVD88	1	S	USGS	S	A
2003-02-11			D 72019	23.57			1	S	USGS	S	A

Explanation		
Section	Code	Description
Water-level date-time accuracy	D	Date is accurate to the Day
Parameter code	62610	Groundwater level above NGVD 1929, feet
Parameter code	62611	Groundwater level above NAVD 1988, feet
Parameter code	72019	Depth to water level, feet below land surface
Referenced vertical datum	NAVD88	North American Vertical Datum of 1988
Referenced vertical datum	NGVD29	National Geodetic Vertical Datum of 1929
Status	1	Static
Method of measurement	S	Steel-tape measurement.
Method of measurement	Z	Other.
Measuring agency		Not determined
Measuring agency	USGS	U.S. Geological Survey
Source of measurement		Not determined
Source of measurement	S	Measured by personnel of reporting agency.
Water-level approval status	A	Approved for publication -- Processing and review completed.

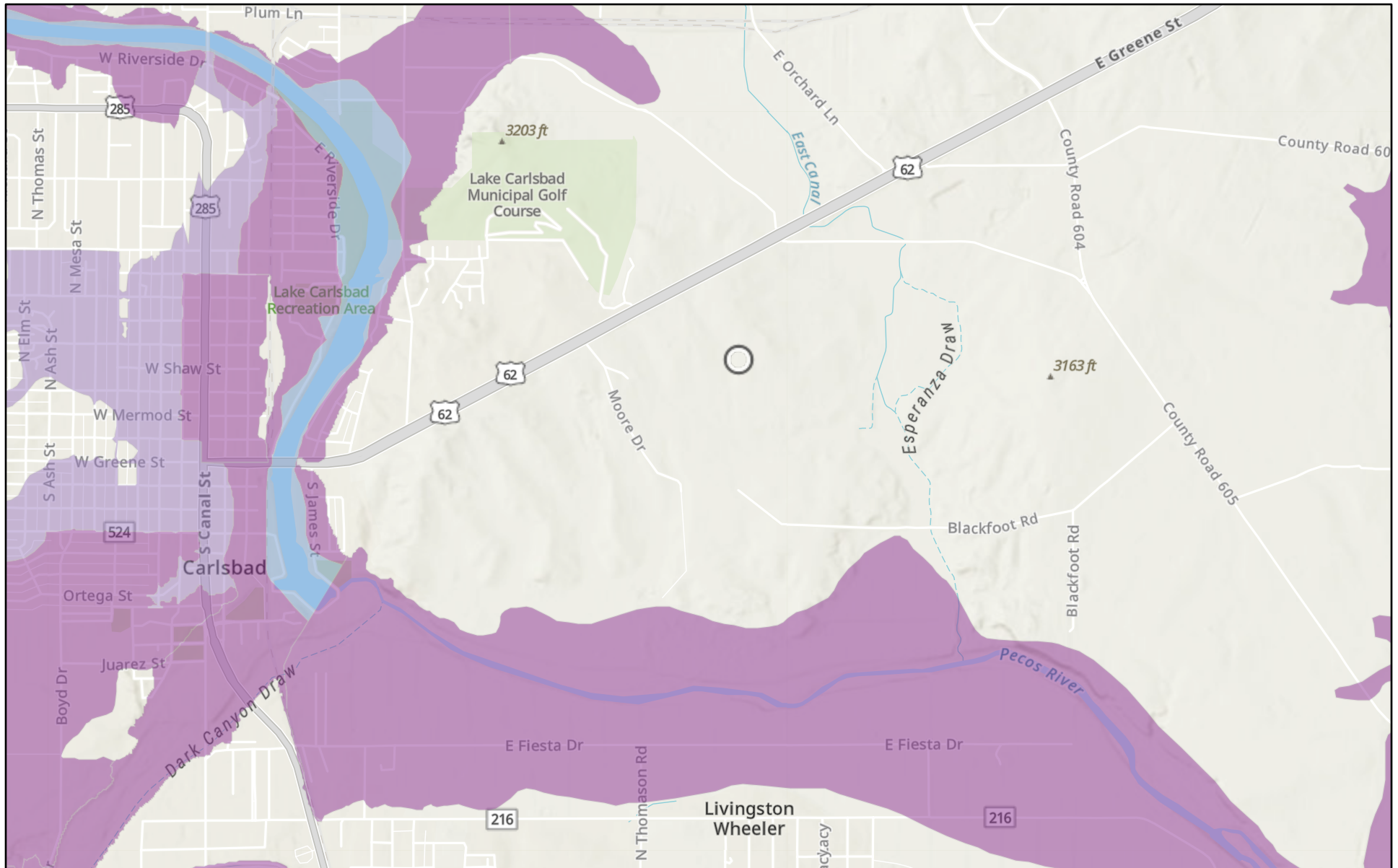
[Questions or Comments](#)
[Help](#)
[Data Tips](#)
[Explanation of terms](#)
[Subscribe for system changes](#)

[Accessibility](#) [FOIA](#) [Privacy](#) [Policies and Notices](#)
[U.S. Department of the Interior](#) | [U.S. Geological Survey](#)
Title: Groundwater for New Mexico: Water Levels
URL: <https://nwis.waterdata.usgs.gov/nm/nwis/gwlevels?>



Page Contact Information: [New Mexico Water Data Maintainer](#)
Page Last Modified: 2025-10-07 17:46:50 EDT
0.38 0.32 nadww02

Bedrock Compressor Station (09.26.2025)



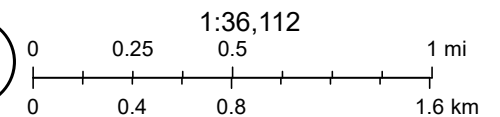
10/7/2025

USA Flood Hazard Areas

- 0.2% Annual Chance Flood Hazard
- 1% Annual Chance Flood Hazard

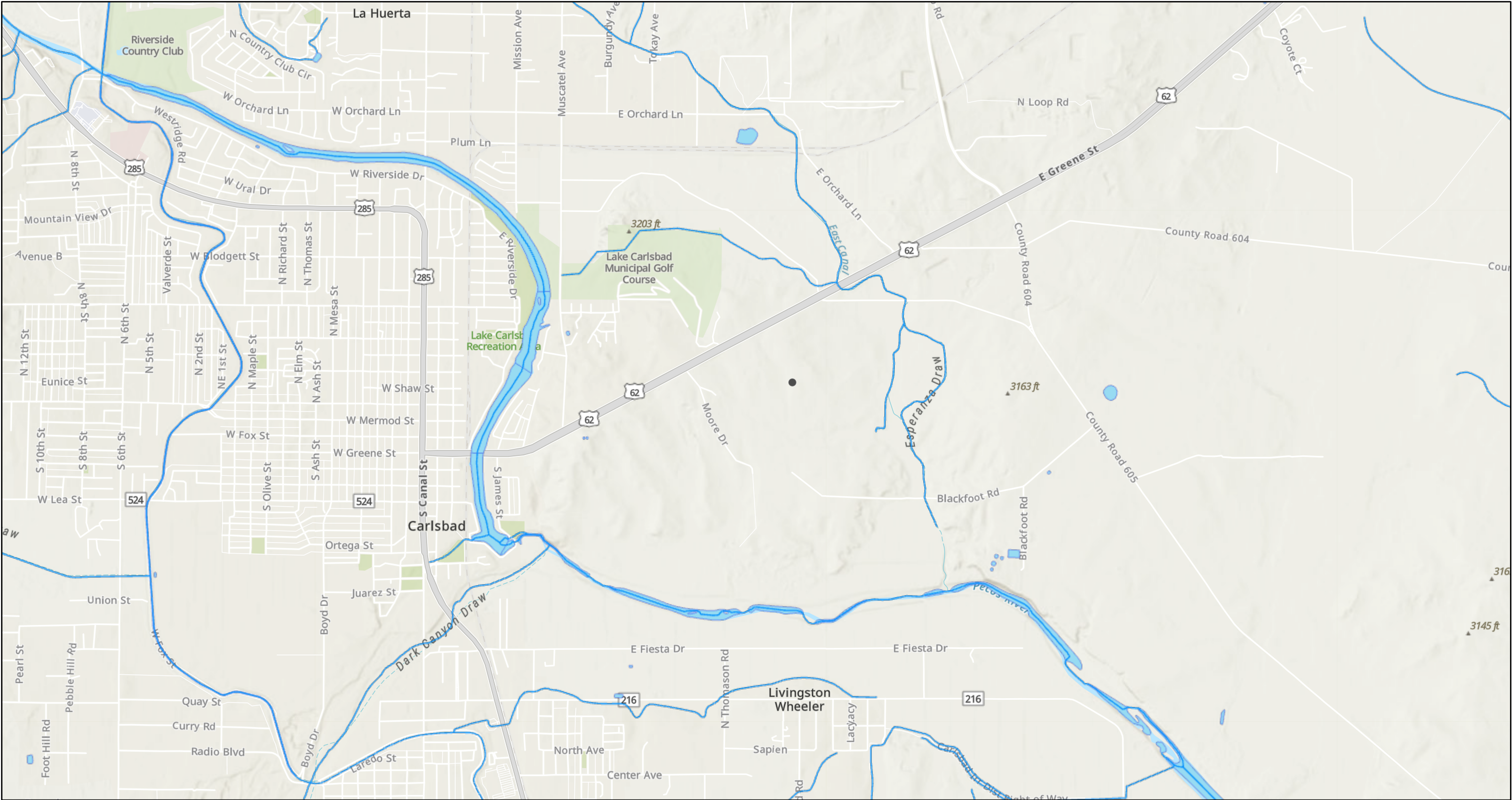
Regulatory Floodway

World_Hillshade



Esri, NASA, NGA, USGS, FEMA, Sources: Esri, TomTom, Garmin, FAO, NOAA, USGS, (c) OpenStreetMap contributors, and the GIS User

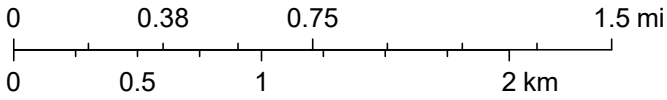
Bedrock Compressor Station (09.26.2025)



10/7/2025, 4:22:25 PM

1:36,112

- OSW Water Bodys
- OSE Streams



Esri, NASA, NGA, USGS, FEMA, Sources: Esri, TomTom, Garmin, FAO, NOAA, USGS, © OpenStreetMap contributors, and the GIS User Community, NM OSE

APPENDIX E

CARMONA RESOURCES





PHONE (575) 393-2326 ° 101 E. MARLAND ° HOBBS, NM 88240

October 17, 2025

RILEY PLOGGER

CARMONA RESOURCES

310 W WALL ST, SUITE 500

MIDLAND, TX 79701

RE: BEDROCK COMPRESSOR STATION

Enclosed are the results of analyses for samples received by the laboratory on 10/14/25 13:49.

Cardinal Laboratories is accredited through Texas NELAP under certificate number TX-C25-00101. Accreditation applies to drinking water, non-potable water and solid and chemical materials. All accredited analytes are denoted by an asterisk (*). For a complete list of accredited analytes and matrices visit the TCEQ website at www.tceq.texas.gov/field/qa/lab_accred_certif.html.

Cardinal Laboratories is accredited through the State of Colorado Department of Public Health and Environment for:

Method EPA 552.2	Haloacetic Acids (HAA-5)
Method EPA 524.2	Total Trihalomethanes (TTHM)
Method EPA 524.4	Regulated VOCs (V1, V2, V3)

Accreditation applies to public drinking water matrices.

This report meets NELAP requirements and is made up of a cover page, analytical results, and a copy of the original chain-of-custody. If you have any questions concerning this report, please feel free to contact me.

Sincerely,

A handwritten signature in black ink that reads "Celey D. Keene". The signature is written in a cursive style with a large, stylized 'C' and 'K'.

Celey D. Keene

Lab Director/Quality Manager



PHONE (575) 393-2326 ° 101 E. MARLAND ° HOBBS, NM 88240

Analytical Results For:

CARMONA RESOURCES
 RILEY PLOGGER
 310 W WALL ST, SUITE 500
 MIDLAND TX, 79701
 Fax To:

Received:	10/14/2025	Sampling Date:	10/14/2025
Reported:	10/17/2025	Sampling Type:	Soil
Project Name:	BEDROCK COMPRESSOR STATION	Sampling Condition:	Cool & Intact
Project Number:	3035	Sample Received By:	Shalyn Rodriguez
Project Location:	EDDY CO NM		

Sample ID: BACKFILL SAMPLE (H256454-01)

BTEX 8021B		mg/kg		Analyzed By: JH					
Analyte	Result	Reporting Limit	Analyzed	Method Blank	BS	% Recovery	True Value QC	RPD	Qualifier
Benzene*	<0.050	0.050	10/15/2025	ND	1.83	91.4	2.00	3.77	
Toluene*	<0.050	0.050	10/15/2025	ND	1.91	95.6	2.00	1.22	
Ethylbenzene*	<0.050	0.050	10/15/2025	ND	1.91	95.4	2.00	0.357	
Total Xylenes*	<0.150	0.150	10/15/2025	ND	5.94	99.0	6.00	0.253	
Total BTEX	<0.300	0.300	10/15/2025	ND					

Surrogate: 4-Bromofluorobenzene (PID) 113 % 70.4-141

Chloride, SM4500Cl-B		mg/kg		Analyzed By: KH						
Analyte	Result	Reporting Limit	Analyzed	Method Blank	BS	% Recovery	True Value QC	RPD	Qualifier	
Chloride	48.0	16.0	10/15/2025	ND	384	96.0	400	8.00		

TPH 8015M		mg/kg		Analyzed By: MS					
Analyte	Result	Reporting Limit	Analyzed	Method Blank	BS	% Recovery	True Value QC	RPD	Qualifier
GRO C6-C10*	<10.0	10.0	10/15/2025	ND	189	94.3	200	3.48	
DRO >C10-C28*	<10.0	10.0	10/15/2025	ND	193	96.6	200	2.62	
EXT DRO >C28-C36	<10.0	10.0	10/15/2025	ND					

Surrogate: 1-Chlorooctane 77.6 % 52.4-130

Surrogate: 1-Chlorooctadecane 77.8 % 39.9-141

Cardinal Laboratories

*=Accredited Analyte

PLEASE NOTE: Liability and Damages. Cardinal's liability and client's exclusive remedy for any claim arising, whether based in contract or tort, shall be limited to the amount paid by client for analyses. All claims, including those for negligence and any other cause whatsoever shall be deemed waived unless made in writing and received by Cardinal within thirty (30) days after completion of the applicable service. In no event shall Cardinal be liable for incidental or consequential damages, including, without limitation, business interruptions, loss of use, or loss of profits incurred by client, its subsidiaries, affiliates or successors arising out of or related to the performance of the services hereunder by Cardinal, regardless of whether such claim is based upon any of the above stated reasons or otherwise. Results relate only to the samples identified above. This report shall not be reproduced except in full with written approval of Cardinal Laboratories.

Celey D. Keene, Lab Director/Quality Manager



PHONE (575) 393-2326 ° 101 E. MARLAND ° HOBBS, NM 88240

Notes and Definitions

ND	Analyte NOT DETECTED at or above the reporting limit
RPD	Relative Percent Difference
**	Samples not received at proper temperature of 6°C or below.
***	Insufficient time to reach temperature.
-	Chloride by SM4500Cl-B does not require samples be received at or below 6°C Samples reported on an as received basis (wet) unless otherwise noted on report

Cardinal Laboratories

*=Accredited Analyte

PLEASE NOTE: Liability and Damages. Cardinal's liability and client's exclusive remedy for any claim arising, whether based in contract or tort, shall be limited to the amount paid by client for analyses. All claims, including those for negligence and any other cause whatsoever shall be deemed waived unless made in writing and received by Cardinal within thirty (30) days after completion of the applicable service. In no event shall Cardinal be liable for incidental or consequential damages, including, without limitation, business interruptions, loss of use, or loss of profits incurred by client, its subsidiaries, affiliates or successors arising out of or related to the performance of the services hereunder by Cardinal, regardless of whether such claim is based upon any of the above stated reasons or otherwise. Results relate only to the samples identified above. This report shall not be reproduced except in full with written approval of Cardinal Laboratories.

A handwritten signature in black ink, appearing to read "Celey D. Keene".

Celey D. Keene, Lab Director/Quality Manager

Work Order No.:

Hasleghs

Page 4 of 4

[illegible]

Comments: Email to Mike Carmona / Mcarmona@carmonaresources.com, Conner Moehring / Cmoehring@carmonaresources.com, and rplogger@carmonaresources.com

04024015

Relinquished by: (Signature)

Date/Time

Received by: (Signature)

Date/Time



PHONE (575) 393-2326 ° 101 E. MARLAND ° HOBBS, NM 88240

October 17, 2025

RILEY PLOGGER

CARMONA RESOURCES

310 W WALL ST, SUITE 500

MIDLAND, TX 79701

RE: BEDROCK COMPRESSOR STATION

Enclosed are the results of analyses for samples received by the laboratory on 10/14/25 13:49.

Cardinal Laboratories is accredited through Texas NELAP under certificate number TX-C25-00101. Accreditation applies to drinking water, non-potable water and solid and chemical materials. All accredited analytes are denoted by an asterisk (*). For a complete list of accredited analytes and matrices visit the TCEQ website at www.tceq.texas.gov/field/qa/lab_accred_certif.html.

Cardinal Laboratories is accredited through the State of Colorado Department of Public Health and Environment for:

Method EPA 552.2	Haloacetic Acids (HAA-5)
Method EPA 524.2	Total Trihalomethanes (TTHM)
Method EPA 524.4	Regulated VOCs (V1, V2, V3)

Accreditation applies to public drinking water matrices.

This report meets NELAP requirements and is made up of a cover page, analytical results, and a copy of the original chain-of-custody. If you have any questions concerning this report, please feel free to contact me.

Sincerely,

A handwritten signature in black ink that reads "Celey D. Keene". The signature is written in a cursive style with a large, stylized 'C' and 'K'.

Celey D. Keene

Lab Director/Quality Manager



PHONE (575) 393-2326 ° 101 E. MARLAND ° HOBBS, NM 88240

Analytical Results For:

CARMONA RESOURCES
 RILEY PLOGGER
 310 W WALL ST, SUITE 500
 MIDLAND TX, 79701
 Fax To:

Received:	10/14/2025	Sampling Date:	10/14/2025
Reported:	10/17/2025	Sampling Type:	Soil
Project Name:	BEDROCK COMPRESSOR STATION	Sampling Condition:	Cool & Intact
Project Number:	3035	Sample Received By:	Shalyn Rodriguez
Project Location:	EDDY CO NM		

Sample ID: CS - 1 (0.5') (H256455-01)

BTX 8021B		mg/kg		Analyzed By: JH					
Analyte	Result	Reporting Limit	Analyzed	Method Blank	BS	% Recovery	True Value QC	RPD	Qualifier
Benzene*	<0.050	0.050	10/15/2025	ND	1.83	91.4	2.00	3.77	
Toluene*	<0.050	0.050	10/15/2025	ND	1.91	95.6	2.00	1.22	
Ethylbenzene*	<0.050	0.050	10/15/2025	ND	1.91	95.4	2.00	0.357	
Total Xylenes*	<0.150	0.150	10/15/2025	ND	5.94	99.0	6.00	0.253	
Total BTX	<0.300	0.300	10/15/2025	ND					

Surrogate: 4-Bromofluorobenzene (PID) 111 % 70.4-141

Chloride, SM4500Cl-B		mg/kg		Analyzed By: KH						
Analyte	Result	Reporting Limit	Analyzed	Method Blank	BS	% Recovery	True Value QC	RPD	Qualifier	
Chloride	112	16.0	10/15/2025	ND	384	96.0	400	8.00		

TPH 8015M		mg/kg		Analyzed By: MS					
Analyte	Result	Reporting Limit	Analyzed	Method Blank	BS	% Recovery	True Value QC	RPD	Qualifier
GRO C6-C10*	<10.0	10.0	10/15/2025	ND	189	94.3	200	3.48	
DRO >C10-C28*	<10.0	10.0	10/15/2025	ND	193	96.6	200	2.62	
EXT DRO >C28-C36	<10.0	10.0	10/15/2025	ND					

Surrogate: 1-Chlorooctane 67.8 % 52.4-130

Surrogate: 1-Chlorooctadecane 83.2 % 39.9-141

Cardinal Laboratories

*=Accredited Analyte

PLEASE NOTE: Liability and Damages. Cardinal's liability and client's exclusive remedy for any claim arising, whether based in contract or tort, shall be limited to the amount paid by client for analyses. All claims, including those for negligence and any other cause whatsoever shall be deemed waived unless made in writing and received by Cardinal within thirty (30) days after completion of the applicable service. In no event shall Cardinal be liable for incidental or consequential damages, including, without limitation, business interruptions, loss of use, or loss of profits incurred by client, its subsidiaries, affiliates or successors arising out of or related to the performance of the services hereunder by Cardinal, regardless of whether such claim is based upon any of the above stated reasons or otherwise. Results relate only to the samples identified above. This report shall not be reproduced except in full with written approval of Cardinal Laboratories.

Celey D. Keene, Lab Director/Quality Manager



PHONE (575) 393-2326 ° 101 E. MARLAND ° HOBBS, NM 88240

Analytical Results For:

CARMONA RESOURCES
 RILEY PLOGGER
 310 W WALL ST, SUITE 500
 MIDLAND TX, 79701
 Fax To:

Received:	10/14/2025	Sampling Date:	10/14/2025
Reported:	10/17/2025	Sampling Type:	Soil
Project Name:	BEDROCK COMPRESSOR STATION	Sampling Condition:	Cool & Intact
Project Number:	3035	Sample Received By:	Shalyn Rodriguez
Project Location:	EDDY CO NM		

Sample ID: CS - 2 (0.5') (H256455-02)

BTX 8021B		mg/kg		Analyzed By: JH						
Analyte	Result	Reporting Limit	Analyzed	Method Blank	BS	% Recovery	True Value QC	RPD	Qualifier	
Benzene*	<0.050	0.050	10/15/2025	ND	1.83	91.4	2.00	3.77		
Toluene*	<0.050	0.050	10/15/2025	ND	1.91	95.6	2.00	1.22		
Ethylbenzene*	<0.050	0.050	10/15/2025	ND	1.91	95.4	2.00	0.357		
Total Xylenes*	<0.150	0.150	10/15/2025	ND	5.94	99.0	6.00	0.253		
Total BTX	<0.300	0.300	10/15/2025	ND						

Surrogate: 4-Bromofluorobenzene (PID) 112 % 70.4-141

Chloride, SM4500CI-B		mg/kg		Analyzed By: KH						
Analyte	Result	Reporting Limit	Analyzed	Method Blank	BS	% Recovery	True Value QC	RPD	Qualifier	
Chloride	128	16.0	10/15/2025	ND	400	100	400	3.92		

TPH 8015M		mg/kg		Analyzed By: MS					
Analyte	Result	Reporting Limit	Analyzed	Method Blank	BS	% Recovery	True Value QC	RPD	Qualifier
GRO C6-C10*	<10.0	10.0	10/15/2025	ND	189	94.3	200	3.48	
DRO >C10-C28*	<10.0	10.0	10/15/2025	ND	193	96.6	200	2.62	
EXT DRO >C28-C36	<10.0	10.0	10/15/2025	ND					

Surrogate: 1-Chlorooctane 67.3 % 52.4-130

Surrogate: 1-Chlorooctadecane 64.5 % 39.9-141

Cardinal Laboratories

*=Accredited Analyte

PLEASE NOTE: Liability and Damages. Cardinal's liability and client's exclusive remedy for any claim arising, whether based in contract or tort, shall be limited to the amount paid by client for analyses. All claims, including those for negligence and any other cause whatsoever shall be deemed waived unless made in writing and received by Cardinal within thirty (30) days after completion of the applicable service. In no event shall Cardinal be liable for incidental or consequential damages, including, without limitation, business interruptions, loss of use, or loss of profits incurred by client, its subsidiaries, affiliates or successors arising out of or related to the performance of the services hereunder by Cardinal, regardless of whether such claim is based upon any of the above stated reasons or otherwise. Results relate only to the samples identified above. This report shall not be reproduced except in full with written approval of Cardinal Laboratories.

Celey D. Keene, Lab Director/Quality Manager



PHONE (575) 393-2326 ° 101 E. MARLAND ° HOBBS, NM 88240

Analytical Results For:

CARMONA RESOURCES
 RILEY PLOGGER
 310 W WALL ST, SUITE 500
 MIDLAND TX, 79701
 Fax To:

Received:	10/14/2025	Sampling Date:	10/14/2025
Reported:	10/17/2025	Sampling Type:	Soil
Project Name:	BEDROCK COMPRESSOR STATION	Sampling Condition:	Cool & Intact
Project Number:	3035	Sample Received By:	Shalyn Rodriguez
Project Location:	EDDY CO NM		

Sample ID: CS - 3 (0.5') (H256455-03)

BTX 8021B		mg/kg		Analyzed By: JH						
Analyte	Result	Reporting Limit	Analyzed	Method Blank	BS	% Recovery	True Value QC	RPD	Qualifier	
Benzene*	<0.050	0.050	10/15/2025	ND	1.83	91.4	2.00	3.77		
Toluene*	<0.050	0.050	10/15/2025	ND	1.91	95.6	2.00	1.22		
Ethylbenzene*	<0.050	0.050	10/15/2025	ND	1.91	95.4	2.00	0.357		
Total Xylenes*	<0.150	0.150	10/15/2025	ND	5.94	99.0	6.00	0.253		
Total BTX	<0.300	0.300	10/15/2025	ND						

Surrogate: 4-Bromofluorobenzene (PID) 110 % 70.4-141

Chloride, SM4500CI-B		mg/kg		Analyzed By: KH					
Analyte	Result	Reporting Limit	Analyzed	Method Blank	BS	% Recovery	True Value QC	RPD	Qualifier
Chloride	64.0	16.0	10/15/2025	ND	400	100	400	3.92	

TPH 8015M		mg/kg		Analyzed By: MS					
Analyte	Result	Reporting Limit	Analyzed	Method Blank	BS	% Recovery	True Value QC	RPD	Qualifier
GRO C6-C10*	<10.0	10.0	10/15/2025	ND	189	94.3	200	3.48	
DRO >C10-C28*	<10.0	10.0	10/15/2025	ND	193	96.6	200	2.62	
EXT DRO >C28-C36	<10.0	10.0	10/15/2025	ND					

Surrogate: 1-Chlorooctane 85.2 % 52.4-130

Surrogate: 1-Chlorooctadecane 85.5 % 39.9-141

Cardinal Laboratories

*=Accredited Analyte

PLEASE NOTE: Liability and Damages. Cardinal's liability and client's exclusive remedy for any claim arising, whether based in contract or tort, shall be limited to the amount paid by client for analyses. All claims, including those for negligence and any other cause whatsoever shall be deemed waived unless made in writing and received by Cardinal within thirty (30) days after completion of the applicable service. In no event shall Cardinal be liable for incidental or consequential damages, including, without limitation, business interruptions, loss of use, or loss of profits incurred by client, its subsidiaries, affiliates or successors arising out of or related to the performance of the services hereunder by Cardinal, regardless of whether such claim is based upon any of the above stated reasons or otherwise. Results relate only to the samples identified above. This report shall not be reproduced except in full with written approval of Cardinal Laboratories.

Celey D. Keene, Lab Director/Quality Manager

PHONE (575) 393-2326 ° 101 E. MARLAND ° HOBBS, NM 88240

Notes and Definitions

ND	Analyte NOT DETECTED at or above the reporting limit
RPD	Relative Percent Difference
**	Samples not received at proper temperature of 6°C or below.
***	Insufficient time to reach temperature.
-	Chloride by SM4500Cl-B does not require samples be received at or below 6°C Samples reported on an as received basis (wet) unless otherwise noted on report

Cardinal Laboratories

*=Accredited Analyte

PLEASE NOTE: Liability and Damages. Cardinal's liability and client's exclusive remedy for any claim arising, whether based in contract or tort, shall be limited to the amount paid by client for analyses. All claims, including those for negligence and any other cause whatsoever shall be deemed waived unless made in writing and received by Cardinal within thirty (30) days after completion of the applicable service. In no event shall Cardinal be liable for incidental or consequential damages, including, without limitation, business interruptions, loss of use, or loss of profits incurred by client, its subsidiaries, affiliates or successors arising out of or related to the performance of the services hereunder by Cardinal, regardless of whether such claim is based upon any of the above stated reasons or otherwise. Results relate only to the samples identified above. This report shall not be reproduced except in full with written approval of Cardinal Laboratories.

A handwritten signature in black ink, appearing to read "Celey D. Keene".

Celey D. Keene, Lab Director/Quality Manager

Chain of Custody

Work Order No: 7856455

Page 6 of 6

[illegible]



PHONE (575) 393-2326 ° 101 E. MARLAND ° HOBBS, NM 88240

October 17, 2025

RILEY PLOGGER

CARMONA RESOURCES

310 W WALL ST, SUITE 500

MIDLAND, TX 79701

RE: BEDROCK COMPRESSOR STATION

Enclosed are the results of analyses for samples received by the laboratory on 10/14/25 13:49.

Cardinal Laboratories is accredited through Texas NELAP under certificate number TX-C25-00101. Accreditation applies to drinking water, non-potable water and solid and chemical materials. All accredited analytes are denoted by an asterisk (*). For a complete list of accredited analytes and matrices visit the TCEQ website at www.tceq.texas.gov/field/qa/lab_accred_certif.html.

Cardinal Laboratories is accredited through the State of Colorado Department of Public Health and Environment for:

Method EPA 552.2	Haloacetic Acids (HAA-5)
Method EPA 524.2	Total Trihalomethanes (TTHM)
Method EPA 524.4	Regulated VOCs (V1, V2, V3)

Accreditation applies to public drinking water matrices.

This report meets NELAP requirements and is made up of a cover page, analytical results, and a copy of the original chain-of-custody. If you have any questions concerning this report, please feel free to contact me.

Sincerely,

A handwritten signature in black ink that reads "Celey D. Keene". The signature is written in a cursive, flowing style.

Celey D. Keene

Lab Director/Quality Manager



PHONE (575) 393-2326 ° 101 E. MARLAND ° HOBBS, NM 88240

Analytical Results For:

CARMONA RESOURCES
 RILEY PLOGGER
 310 W WALL ST, SUITE 500
 MIDLAND TX, 79701
 Fax To:

Received:	10/14/2025	Sampling Date:	10/14/2025
Reported:	10/17/2025	Sampling Type:	Soil
Project Name:	BEDROCK COMPRESSOR STATION	Sampling Condition:	Cool & Intact
Project Number:	3035	Sample Received By:	Shalyn Rodriguez
Project Location:	EDDY CO NM		

Sample ID: H - 1 (0-0.5') (H256456-01)

BTX 8021B		mg/kg		Analyzed By: JH					
Analyte	Result	Reporting Limit	Analyzed	Method Blank	BS	% Recovery	True Value QC	RPD	Qualifier
Benzene*	<0.050	0.050	10/15/2025	ND	1.83	91.4	2.00	3.77	
Toluene*	<0.050	0.050	10/15/2025	ND	1.91	95.6	2.00	1.22	
Ethylbenzene*	<0.050	0.050	10/15/2025	ND	1.91	95.4	2.00	0.357	
Total Xylenes*	<0.150	0.150	10/15/2025	ND	5.94	99.0	6.00	0.253	
Total BTX	<0.300	0.300	10/15/2025	ND					

Surrogate: 4-Bromofluorobenzene (PID) 111 % 70.4-141

Chloride, SM4500Cl-B		mg/kg		Analyzed By: KH						
Analyte	Result	Reporting Limit	Analyzed	Method Blank	BS	% Recovery	True Value QC	RPD	Qualifier	
Chloride	64.0	16.0	10/15/2025	ND	400	100	400	3.92		

TPH 8015M		mg/kg		Analyzed By: MS					
Analyte	Result	Reporting Limit	Analyzed	Method Blank	BS	% Recovery	True Value QC	RPD	Qualifier
GRO C6-C10*	<10.0	10.0	10/15/2025	ND	189	94.3	200	3.48	
DRO >C10-C28*	<10.0	10.0	10/15/2025	ND	193	96.6	200	2.62	
EXT DRO >C28-C36	<10.0	10.0	10/15/2025	ND					

Surrogate: 1-Chlorooctane 75.6 % 52.4-130

Surrogate: 1-Chlorooctadecane 74.5 % 39.9-141

Cardinal Laboratories

*=Accredited Analyte

PLEASE NOTE: Liability and Damages. Cardinal's liability and client's exclusive remedy for any claim arising, whether based in contract or tort, shall be limited to the amount paid by client for analyses. All claims, including those for negligence and any other cause whatsoever shall be deemed waived unless made in writing and received by Cardinal within thirty (30) days after completion of the applicable service. In no event shall Cardinal be liable for incidental or consequential damages, including, without limitation, business interruptions, loss of use, or loss of profits incurred by client, its subsidiaries, affiliates or successors arising out of or related to the performance of the services hereunder by Cardinal, regardless of whether such claim is based upon any of the above stated reasons or otherwise. Results relate only to the samples identified above. This report shall not be reproduced except in full with written approval of Cardinal Laboratories.

Celey D. Keene, Lab Director/Quality Manager



PHONE (575) 393-2326 ° 101 E. MARLAND ° HOBBS, NM 88240

Analytical Results For:

CARMONA RESOURCES
 RILEY PLOGGER
 310 W WALL ST, SUITE 500
 MIDLAND TX, 79701
 Fax To:

Received:	10/14/2025	Sampling Date:	10/14/2025
Reported:	10/17/2025	Sampling Type:	Soil
Project Name:	BEDROCK COMPRESSOR STATION	Sampling Condition:	Cool & Intact
Project Number:	3035	Sample Received By:	Shalyn Rodriguez
Project Location:	EDDY CO NM		

Sample ID: H - 2 (0-0.5') (H256456-02)

BTEx 8021B		mg/kg		Analyzed By: JH						
Analyte	Result	Reporting Limit	Analyzed	Method Blank	BS	% Recovery	True Value QC	RPD	Qualifier	
Benzene*	<0.050	0.050	10/15/2025	ND	1.83	91.4	2.00	3.77		
Toluene*	<0.050	0.050	10/15/2025	ND	1.91	95.6	2.00	1.22		
Ethylbenzene*	<0.050	0.050	10/15/2025	ND	1.91	95.4	2.00	0.357		
Total Xylenes*	<0.150	0.150	10/15/2025	ND	5.94	99.0	6.00	0.253		
Total BTEx	<0.300	0.300	10/15/2025	ND						

Surrogate: 4-Bromofluorobenzene (PID) 113 % 70.4-141

Chloride, SM4500Cl-B		mg/kg		Analyzed By: KH						
Analyte	Result	Reporting Limit	Analyzed	Method Blank	BS	% Recovery	True Value QC	RPD	Qualifier	
Chloride	80.0	16.0	10/15/2025	ND	400	100	400	3.92		

TPH 8015M		mg/kg		Analyzed By: MS					
Analyte	Result	Reporting Limit	Analyzed	Method Blank	BS	% Recovery	True Value QC	RPD	Qualifier
GRO C6-C10*	<10.0	10.0	10/15/2025	ND	189	94.3	200	3.48	
DRO >C10-C28*	<10.0	10.0	10/15/2025	ND	193	96.6	200	2.62	
EXT DRO >C28-C36	<10.0	10.0	10/15/2025	ND					

Surrogate: 1-Chlorooctane 104 % 52.4-130

Surrogate: 1-Chlorooctadecane 109 % 39.9-141

Cardinal Laboratories

*=Accredited Analyte

PLEASE NOTE: Liability and Damages. Cardinal's liability and client's exclusive remedy for any claim arising, whether based in contract or tort, shall be limited to the amount paid by client for analyses. All claims, including those for negligence and any other cause whatsoever shall be deemed waived unless made in writing and received by Cardinal within thirty (30) days after completion of the applicable service. In no event shall Cardinal be liable for incidental or consequential damages, including, without limitation, business interruptions, loss of use, or loss of profits incurred by client, its subsidiaries, affiliates or successors arising out of or related to the performance of the services hereunder by Cardinal, regardless of whether such claim is based upon any of the above stated reasons or otherwise. Results relate only to the samples identified above. This report shall not be reproduced except in full with written approval of Cardinal Laboratories.

Celey D. Keene, Lab Director/Quality Manager



PHONE (575) 393-2326 ° 101 E. MARLAND ° HOBBS, NM 88240

Analytical Results For:

CARMONA RESOURCES
 RILEY PLOGGER
 310 W WALL ST, SUITE 500
 MIDLAND TX, 79701
 Fax To:

Received:	10/14/2025	Sampling Date:	10/14/2025
Reported:	10/17/2025	Sampling Type:	Soil
Project Name:	BEDROCK COMPRESSOR STATION	Sampling Condition:	Cool & Intact
Project Number:	3035	Sample Received By:	Shalyn Rodriguez
Project Location:	EDDY CO NM		

Sample ID: H - 3 (0-0.5') (H256456-03)

BTEx 8021B		mg/kg		Analyzed By: JH						
Analyte	Result	Reporting Limit	Analyzed	Method Blank	BS	% Recovery	True Value QC	RPD	Qualifier	
Benzene*	<0.050	0.050	10/15/2025	ND	1.83	91.4	2.00	3.77		
Toluene*	<0.050	0.050	10/15/2025	ND	1.91	95.6	2.00	1.22		
Ethylbenzene*	<0.050	0.050	10/15/2025	ND	1.91	95.4	2.00	0.357		
Total Xylenes*	<0.150	0.150	10/15/2025	ND	5.94	99.0	6.00	0.253		
Total BTEX	<0.300	0.300	10/15/2025	ND						

Surrogate: 4-Bromofluorobenzene (PID) 112 % 70.4-141

Chloride, SM4500Cl-B		mg/kg		Analyzed By: KH						
Analyte	Result	Reporting Limit	Analyzed	Method Blank	BS	% Recovery	True Value QC	RPD	Qualifier	
Chloride	80.0	16.0	10/15/2025	ND	400	100	400	3.92		

TPH 8015M		mg/kg		Analyzed By: MS					
Analyte	Result	Reporting Limit	Analyzed	Method Blank	BS	% Recovery	True Value QC	RPD	Qualifier
GRO C6-C10*	<10.0	10.0	10/15/2025	ND	189	94.3	200	3.48	
DRO >C10-C28*	<10.0	10.0	10/15/2025	ND	193	96.6	200	2.62	
EXT DRO >C28-C36	<10.0	10.0	10/15/2025	ND					

Surrogate: 1-Chlorooctane 79.3 % 52.4-130

Surrogate: 1-Chlorooctadecane 78.1 % 39.9-141

Cardinal Laboratories

*=Accredited Analyte

PLEASE NOTE: Liability and Damages. Cardinal's liability and client's exclusive remedy for any claim arising, whether based in contract or tort, shall be limited to the amount paid by client for analyses. All claims, including those for negligence and any other cause whatsoever shall be deemed waived unless made in writing and received by Cardinal within thirty (30) days after completion of the applicable service. In no event shall Cardinal be liable for incidental or consequential damages, including, without limitation, business interruptions, loss of use, or loss of profits incurred by client, its subsidiaries, affiliates or successors arising out of or related to the performance of the services hereunder by Cardinal, regardless of whether such claim is based upon any of the above stated reasons or otherwise. Results relate only to the samples identified above. This report shall not be reproduced except in full with written approval of Cardinal Laboratories.

Celey D. Keene, Lab Director/Quality Manager



PHONE (575) 393-2326 ° 101 E. MARLAND ° HOBBS, NM 88240

Analytical Results For:

CARMONA RESOURCES
 RILEY PLOGGER
 310 W WALL ST, SUITE 500
 MIDLAND TX, 79701
 Fax To:

Received:	10/14/2025	Sampling Date:	10/14/2025
Reported:	10/17/2025	Sampling Type:	Soil
Project Name:	BEDROCK COMPRESSOR STATION	Sampling Condition:	Cool & Intact
Project Number:	3035	Sample Received By:	Shalyn Rodriguez
Project Location:	EDDY CO NM		

Sample ID: H - 4 (0-0.5') (H256456-04)

BTX 8021B		mg/kg		Analyzed By: JH						
Analyte	Result	Reporting Limit	Analyzed	Method Blank	BS	% Recovery	True Value QC	RPD	Qualifier	
Benzene*	<0.050	0.050	10/15/2025	ND	1.83	91.4	2.00	3.77		
Toluene*	<0.050	0.050	10/15/2025	ND	1.91	95.6	2.00	1.22		
Ethylbenzene*	<0.050	0.050	10/15/2025	ND	1.91	95.4	2.00	0.357		
Total Xylenes*	<0.150	0.150	10/15/2025	ND	5.94	99.0	6.00	0.253		
Total BTX	<0.300	0.300	10/15/2025	ND						

Surrogate: 4-Bromofluorobenzene (PID) 112 % 70.4-141

Chloride, SM4500Cl-B		mg/kg		Analyzed By: KH						
Analyte	Result	Reporting Limit	Analyzed	Method Blank	BS	% Recovery	True Value QC	RPD	Qualifier	
Chloride	80.0	16.0	10/15/2025	ND	400	100	400	3.92		

TPH 8015M		mg/kg		Analyzed By: MS					
Analyte	Result	Reporting Limit	Analyzed	Method Blank	BS	% Recovery	True Value QC	RPD	Qualifier
GRO C6-C10*	<10.0	10.0	10/15/2025	ND	189	94.3	200	3.48	
DRO >C10-C28*	<10.0	10.0	10/15/2025	ND	193	96.6	200	2.62	
EXT DRO >C28-C36	<10.0	10.0	10/15/2025	ND					

Surrogate: 1-Chlorooctane 76.4 % 52.4-130

Surrogate: 1-Chlorooctadecane 74.6 % 39.9-141

Cardinal Laboratories

*=Accredited Analyte

PLEASE NOTE: Liability and Damages. Cardinal's liability and client's exclusive remedy for any claim arising, whether based in contract or tort, shall be limited to the amount paid by client for analyses. All claims, including those for negligence and any other cause whatsoever shall be deemed waived unless made in writing and received by Cardinal within thirty (30) days after completion of the applicable service. In no event shall Cardinal be liable for incidental or consequential damages, including, without limitation, business interruptions, loss of use, or loss of profits incurred by client, its subsidiaries, affiliates or successors arising out of or related to the performance of the services hereunder by Cardinal, regardless of whether such claim is based upon any of the above stated reasons or otherwise. Results relate only to the samples identified above. This report shall not be reproduced except in full with written approval of Cardinal Laboratories.

Celey D. Keene, Lab Director/Quality Manager



PHONE (575) 393-2326 ° 101 E. MARLAND ° HOBBS, NM 88240

Notes and Definitions

ND	Analyte NOT DETECTED at or above the reporting limit
RPD	Relative Percent Difference
**	Samples not received at proper temperature of 6°C or below.
***	Insufficient time to reach temperature.
-	Chloride by SM4500Cl-B does not require samples be received at or below 6°C Samples reported on an as received basis (wet) unless otherwise noted on report

Cardinal Laboratories

*=Accredited Analyte

PLEASE NOTE: Liability and Damages. Cardinal's liability and client's exclusive remedy for any claim arising, whether based in contract or tort, shall be limited to the amount paid by client for analyses. All claims, including those for negligence and any other cause whatsoever shall be deemed waived unless made in writing and received by Cardinal within thirty (30) days after completion of the applicable service. In no event shall Cardinal be liable for incidental or consequential damages, including, without limitation, business interruptions, loss of use, or loss of profits incurred by client, its subsidiaries, affiliates or successors arising out of or related to the performance of the services hereunder by Cardinal, regardless of whether such claim is based upon any of the above stated reasons or otherwise. Results relate only to the samples identified above. This report shall not be reproduced except in full with written approval of Cardinal Laboratories.

A handwritten signature in black ink, appearing to read "Celey D. Keene".

Celey D. Keene, Lab Director/Quality Manager

Work Order No.:

Hasle454

Page 1 of 1[illegible]

Sante Fe Main Office
Phone: (505) 476-3441

General Information
Phone: (505) 629-6116

Online Phone Directory
<https://www.emnrd.nm.gov/ocd/contact-us>

State of New Mexico
Energy, Minerals and Natural Resources
Oil Conservation Division
1220 S. St Francis Dr.
Santa Fe, NM 87505

QUESTIONS

Action 529741

QUESTIONS

Operator: FRONTIER FIELD SERVICES, LLC 303 Veterans Airpark Lane Midland, TX 79705	OGRID: 221115
	Action Number: 529741
	Action Type: [C-141] Remediation Closure Request C-141 (C-141-v-Closure)

QUESTIONS

Prerequisites	
Incident ID (n#)	nAPP2527332663
Incident Name	NAPP2527332663 BEDROCK COMPRESSOR STATION @ FAPP2504532419
Incident Type	Fire
Incident Status	Remediation Closure Report Received
Incident Facility	[fAPP2504532419] Kinetik NM Gas Gathering

Location of Release Source

Please answer all the questions in this group.

Site Name	BEDROCK COMPRESSOR STATION
Date Release Discovered	09/26/2025
Surface Owner	Private

Incident Details

Please answer all the questions in this group.

Incident Type	Fire
Did this release result in a fire or is the result of a fire	Yes
Did this release result in any injuries	No
Has this release reached or does it have a reasonable probability of reaching a watercourse	No
Has this release endangered or does it have a reasonable probability of endangering public health	No
Has this release substantially damaged or will it substantially damage property or the environment	No
Is this release of a volume that is or may with reasonable probability be detrimental to fresh water	No

Nature and Volume of Release

Material(s) released, please answer all that apply below. Any calculations or specific justifications for the volumes provided should be attached to the follow-up C-141 submission.

Crude Oil Released (bbls) Details	Not answered.
Produced Water Released (bbls) Details	Not answered.
Is the concentration of chloride in the produced water >10,000 mg/l	No
Condensate Released (bbls) Details	Cause: Fire Other (Specify) Condensate Released: 0 BBL Recovered: 0 BBL Lost: 0 BBL.
Natural Gas Vented (Mcf) Details	Not answered.
Natural Gas Flared (Mcf) Details	Not answered.
Other Released Details	Not answered.
Are there additional details for the questions above (i.e. any answer containing Other, Specify, Unknown, and/or Fire, or any negative lost amounts)	Not answered.

Sante Fe Main Office
Phone: (505) 476-3441

General Information
Phone: (505) 629-6116

Online Phone Directory
<https://www.emnrd.nm.gov/ocd/contact-us>

State of New Mexico
Energy, Minerals and Natural Resources
Oil Conservation Division
1220 S. St Francis Dr.
Santa Fe, NM 87505

QUESTIONS, Page 2

Action 529741

QUESTIONS (continued)

Operator: FRONTIER FIELD SERVICES, LLC 303 Veterans Airpark Lane Midland, TX 79705	OGRID: 221115
	Action Number: 529741
	Action Type: [C-141] Remediation Closure Request C-141 (C-141-v-Closure)

QUESTIONS

Nature and Volume of Release (continued)	
Is this a gas only submission (i.e. only significant Mcf values reported)	More info needed to determine if this will be treated as a "gas only" report.
Was this a major release as defined by Subsection A of 19.15.29.7 NMAC	Yes
Reasons why this would be considered a submission for a notification of a major release	From paragraph A. "Major release" determine using: (2) an unauthorized release of a volume that: (a) results in a fire or is the result of a fire.
<i>With the implementation of the 19.15.27 NMAC (05/25/2021), venting and/or flaring of natural gas (i.e. gas only) are to be submitted on the C-129 form.</i>	

Initial Response

The responsible party must undertake the following actions immediately unless they could create a safety hazard that would result in injury.

The source of the release has been stopped	True
The impacted area has been secured to protect human health and the environment	True
Released materials have been contained via the use of berms or dikes, absorbent pads, or other containment devices	True
All free liquids and recoverable materials have been removed and managed appropriately	True
If all the actions described above have not been undertaken, explain why	Not answered.

Per Paragraph (4) of Subsection B of 19.15.29.8 NMAC the responsible party may commence remediation immediately after discovery of a release. If remediation has begun, please prepare and attach a narrative of actions to date in the follow-up C-141 submission. If remedial efforts have been successfully completed or if the release occurred within a lined containment area (see Subparagraph (a) of Paragraph (5) of Subsection A of 19.15.29.11 NMAC), please prepare and attach all information needed for closure evaluation in the follow-up C-141 submission.

I hereby certify that the information given above is true and complete to the best of my knowledge and understand that pursuant to OCD rules and regulations all operators are required to report and/or file certain release notifications and perform corrective actions for releases which may endanger public health or the environment. The acceptance of a C-141 report by the OCD does not relieve the operator of liability should their operations have failed to adequately investigate and remediate contamination that pose a threat to groundwater, surface water, human health or the environment. In addition, OCD acceptance of a C-141 report does not relieve the operator of responsibility for compliance with any other federal, state, or local laws and/or regulations.

I hereby agree and sign off to the above statement	Name: Ivan Jimenez Title: Environmental Tech Email: ijimenez@kinetik.com Date: 11/25/2025
--	--

Sante Fe Main Office
Phone: (505) 476-3441

General Information
Phone: (505) 629-6116

Online Phone Directory
<https://www.emnrd.nm.gov/ocd/contact-us>

State of New Mexico
Energy, Minerals and Natural Resources
Oil Conservation Division
1220 S. St Francis Dr.
Santa Fe, NM 87505

QUESTIONS, Page 3

Action 529741

QUESTIONS (continued)

Operator: FRONTIER FIELD SERVICES, LLC 303 Veterans Airport Lane Midland, TX 79705	OGRID:
	221115
	Action Number:
	529741
Action Type:	
[C-141] Remediation Closure Request C-141 (C-141-v-Closure)	

QUESTIONS

Site Characterization	
<i>Please answer all the questions in this group (only required when seeking remediation plan approval and beyond). This information must be provided to the appropriate district office no later than 90 days after the release discovery date.</i>	
What is the shallowest depth to groundwater beneath the area affected by the release in feet below ground surface (ft bgs)	Between 26 and 50 (ft.)
What method was used to determine the depth to ground water	U.S. Geological Survey
Did this release impact groundwater or surface water	No
What is the minimum distance, between the closest lateral extents of the release and the following surface areas:	
A continuously flowing watercourse or any other significant watercourse	Between 1 and 5 (mi.)
Any lakebed, sinkhole, or playa lake (measured from the ordinary high-water mark)	Between ½ and 1 (mi.)
An occupied permanent residence, school, hospital, institution, or church	Between 1000 (ft.) and ½ (mi.)
A spring or a private domestic fresh water well used by less than five households for domestic or stock watering purposes	Between 1000 (ft.) and ½ (mi.)
Any other fresh water well or spring	Between ½ and 1 (mi.)
Incorporated municipal boundaries or a defined municipal fresh water well field	Between ½ and 1 (mi.)
A wetland	Between ½ and 1 (mi.)
A subsurface mine	Greater than 5 (mi.)
An (non-karst) unstable area	Zero feet, overlying, or within area
Categorize the risk of this well / site being in a karst geology	Medium
A 100-year floodplain	Between ½ and 1 (mi.)
Did the release impact areas not on an exploration, development, production, or storage site	No

Remediation Plan	
<i>Please answer all the questions that apply or are indicated. This information must be provided to the appropriate district office no later than 90 days after the release discovery date.</i>	
Requesting a remediation plan approval with this submission	Yes
<i>Attach a comprehensive report demonstrating the lateral and vertical extents of soil contamination associated with the release have been determined, pursuant to 19.15.29.11 NMAC and 19.15.29.13 NMAC.</i>	
Have the lateral and vertical extents of contamination been fully delineated	Yes
Was this release entirely contained within a lined containment area	No
Soil Contamination Sampling: (Provide the highest observable value for each, in milligrams per kilograms.)	
Chloride (EPA 300.0 or SM4500 Cl B)	128
TPH (GRO+DRO+MRO) (EPA SW-846 Method 8015M)	0
GRO+DRO (EPA SW-846 Method 8015M)	0
BTEX (EPA SW-846 Method 8021B or 8260B)	0
Benzene (EPA SW-846 Method 8021B or 8260B)	0
<i>Per Subsection B of 19.15.29.11 NMAC unless the site characterization report includes completed efforts at remediation, the report must include a proposed remediation plan in accordance with 19.15.29.12 NMAC, which includes the anticipated timelines for beginning and completing the remediation.</i>	
On what estimated date will the remediation commence	10/14/2025
On what date will (or did) the final sampling or liner inspection occur	10/14/2025
On what date will (or was) the remediation complete(d)	10/14/2025
What is the estimated surface area (in square feet) that will be reclaimed	0
What is the estimated volume (in cubic yards) that will be reclaimed	0
What is the estimated surface area (in square feet) that will be remediated	250
What is the estimated volume (in cubic yards) that will be remediated	5
<i>These estimated dates and measurements are recognized to be the best guess or calculation at the time of submission and may (be) change(d) over time as more remediation efforts are completed.</i>	
<i>The OCD recognizes that proposed remediation measures may have to be minimally adjusted in accordance with the physical realities encountered during remediation. If the responsible party has any need to significantly deviate from the remediation plan proposed, then it should consult with the division to determine if another remediation plan submission is required.</i>	

Sante Fe Main Office
Phone: (505) 476-3441

General Information
Phone: (505) 629-6116

Online Phone Directory
<https://www.emnrd.nm.gov/ocd/contact-us>

State of New Mexico
Energy, Minerals and Natural Resources
Oil Conservation Division
1220 S. St Francis Dr.
Santa Fe, NM 87505

QUESTIONS, Page 4

Action 529741

QUESTIONS (continued)

Operator: FRONTIER FIELD SERVICES, LLC 303 Veterans Airpark Lane Midland, TX 79705	OGRID: 221115
	Action Number: 529741
	Action Type: [C-141] Remediation Closure Request C-141 (C-141-v-Closure)

QUESTIONS

Remediation Plan (continued)	
<i>Please answer all the questions that apply or are indicated. This information must be provided to the appropriate district office no later than 90 days after the release discovery date.</i>	
This remediation will (or is expected to) utilize the following processes to remediate / reduce contaminants:	
<i>(Select all answers below that apply.)</i>	
(Ex Situ) Excavation and off-site disposal (i.e. dig and haul, hydrovac, etc.)	Yes
Which OCD approved facility will be used for off-site disposal	fEEM0112342028 LEA LAND LANDFILL
OR which OCD approved well (API) will be used for off-site disposal	Not answered.
OR is the off-site disposal site, to be used, out-of-state	Not answered.
OR is the off-site disposal site, to be used, an NMED facility	Not answered.
(Ex Situ) Excavation and on-site remediation (i.e. On-Site Land Farms)	Not answered.
(In Situ) Soil Vapor Extraction	Not answered.
(In Situ) Chemical processing (i.e. Soil Shredding, Potassium Permanganate, etc.)	Not answered.
(In Situ) Biological processing (i.e. Microbes / Fertilizer, etc.)	Not answered.
(In Situ) Physical processing (i.e. Soil Washing, Gypsum, Disking, etc.)	Not answered.
Ground Water Abatement pursuant to 19.15.30 NMAC	Not answered.
OTHER (Non-listed remedial process)	Not answered.
<i>Per Subsection B of 19.15.29.11 NMAC unless the site characterization report includes completed efforts at remediation, the report must include a proposed remediation plan in accordance with 19.15.29.12 NMAC, which includes the anticipated timelines for beginning and completing the remediation.</i>	
I hereby certify that the information given above is true and complete to the best of my knowledge and understand that pursuant to OCD rules and regulations all operators are required to report and/or file certain release notifications and perform corrective actions for releases which may endanger public health or the environment. The acceptance of a C-141 report by the OCD does not relieve the operator of liability should their operations have failed to adequately investigate and remediate contamination that pose a threat to groundwater, surface water, human health or the environment. In addition, OCD acceptance of a C-141 report does not relieve the operator of responsibility for compliance with any other federal, state, or local laws and/or regulations.	
I hereby agree and sign off to the above statement	Name: Ivan Jimenez Title: Environmental Tech Email: ijimenez@kinetik.com Date: 11/25/2025
<i>The OCD recognizes that proposed remediation measures may have to be minimally adjusted in accordance with the physical realities encountered during remediation. If the responsible party has any need to significantly deviate from the remediation plan proposed, then it should consult with the division to determine if another remediation plan submission is required.</i>	

Sante Fe Main Office
Phone: (505) 476-3441

General Information
Phone: (505) 629-6116

Online Phone Directory
<https://www.emnrd.nm.gov/ocd/contact-us>

State of New Mexico
Energy, Minerals and Natural Resources
Oil Conservation Division
1220 S. St Francis Dr.
Santa Fe, NM 87505

QUESTIONS, Page 5

Action 529741

QUESTIONS (continued)

Operator: FRONTIER FIELD SERVICES, LLC 303 Veterans Airpark Lane Midland, TX 79705	OGRID: 221115
	Action Number: 529741
	Action Type: [C-141] Remediation Closure Request C-141 (C-141-v-Closure)

QUESTIONS

Deferral Requests Only	
Only answer the questions in this group if seeking a deferral upon approval this submission. Each of the following items must be confirmed as part of any request for deferral of remediation.	
Requesting a deferral of the remediation closure due date with the approval of this submission	No

Sante Fe Main Office
Phone: (505) 476-3441

General Information
Phone: (505) 629-6116

Online Phone Directory
<https://www.emnrd.nm.gov/ocd/contact-us>

State of New Mexico
Energy, Minerals and Natural Resources
Oil Conservation Division
1220 S. St Francis Dr.
Santa Fe, NM 87505

QUESTIONS, Page 6

Action 529741

QUESTIONS (continued)

Operator: FRONTIER FIELD SERVICES, LLC 303 Veterans Airpark Lane Midland, TX 79705	OGRID: 221115
	Action Number: 529741
	Action Type: [C-141] Remediation Closure Request C-141 (C-141-v-Closure)

QUESTIONS

Sampling Event Information	
Last sampling notification (C-141N) recorded	513514
Sampling date pursuant to Subparagraph (a) of Paragraph (1) of Subsection D of 19.15.29.12 NMAC	10/14/2025
What was the (estimated) number of samples that were to be gathered	10
What was the sampling surface area in square feet	246

Remediation Closure Request

Only answer the questions in this group if seeking remediation closure for this release because all remediation steps have been completed.

Requesting a remediation closure approval with this submission	Yes
Have the lateral and vertical extents of contamination been fully delineated	Yes
Was this release entirely contained within a lined containment area	No
All areas reasonably needed for production or subsequent drilling operations have been stabilized, returned to the sites existing grade, and have a soil cover that prevents ponding of water, minimizing dust and erosion	Yes
What was the total surface area (in square feet) remediated	250
What was the total volume (cubic yards) remediated	5
All areas not reasonably needed for production or subsequent drilling operations have been reclaimed to contain a minimum of four feet of non-waste contain earthen material with concentrations less than 600 mg/kg chlorides, 100 mg/kg TPH, 50 mg/kg BTEX, and 10 mg/kg Benzene	Yes
What was the total surface area (in square feet) reclaimed	0
What was the total volume (in cubic yards) reclaimed	0
Summarize any additional remediation activities not included by answers (above)	All remediation activities are complete. Refer to Table 1 and Figures 3 for sample result data and sample point location. Surface scrape around flare fire area to a depth of 0.5'

The responsible party must attach information demonstrating they have complied with all applicable closure requirements and any conditions or directives of the OCD. This demonstration should be in the form of a comprehensive report (in .pdf format) including a scaled site map, sampling diagrams, relevant field notes, photographs of any excavation prior to backfilling, laboratory data including chain of custody documents of final sampling, and a narrative of the remedial activities. Refer to 19.15.29.12 NMAC.

I hereby certify that the information given above is true and complete to the best of my knowledge and understand that pursuant to OCD rules and regulations all operators are required to report and/or file certain release notifications and perform corrective actions for releases which may endanger public health or the environment. The acceptance of a C-141 report by the OCD does not relieve the operator of liability should their operations have failed to adequately investigate and remediate contamination that pose a threat to groundwater, surface water, human health or the environment. In addition, OCD acceptance of a C-141 report does not relieve the operator of responsibility for compliance with any other federal, state, or local laws and/or regulations. The responsible party acknowledges they must substantially restore, reclaim, and re-vegetate the impacted surface area to the conditions that existed prior to the release or their final land use in accordance with 19.15.29.13 NMAC including notification to the OCD when reclamation and re-vegetation are complete.

I hereby agree and sign off to the above statement	Name: Ivan Jimenez Title: Environmental Tech Email: ijimenez@kinetik.com Date: 11/25/2025
--	--

Sante Fe Main Office
Phone: (505) 476-3441

General Information
Phone: (505) 629-6116

Online Phone Directory
<https://www.emnrd.nm.gov/ocd/contact-us>

State of New Mexico
Energy, Minerals and Natural Resources
Oil Conservation Division
1220 S. St Francis Dr.
Santa Fe, NM 87505

QUESTIONS, Page 7

Action 529741

QUESTIONS (continued)

Operator: FRONTIER FIELD SERVICES, LLC 303 Veterans Airpark Lane Midland, TX 79705	OGRID: 221115
	Action Number: 529741
	Action Type: [C-141] Remediation Closure Request C-141 (C-141-v-Closure)

QUESTIONS

Reclamation Report	
Only answer the questions in this group if all reclamation steps have been completed.	
Requesting a reclamation approval with this submission	No

Sante Fe Main Office
Phone: (505) 476-3441

General Information
Phone: (505) 629-6116

Online Phone Directory
<https://www.emnrd.nm.gov/ocd/contact-us>

State of New Mexico
Energy, Minerals and Natural Resources
Oil Conservation Division
1220 S. St Francis Dr.
Santa Fe, NM 87505

CONDITIONS

Action 529741

CONDITIONS

Operator: FRONTIER FIELD SERVICES, LLC 303 Veterans Airpark Lane Midland, TX 79705	OGRID: 221115
	Action Number: 529741
	Action Type: [C-141] Remediation Closure Request C-141 (C-141-v-Closure)

CONDITIONS

Created By	Condition	Condition Date
rhamlet	On future projects, do not push excess material from the edge of the excavation into the excavated area without contacting the OCD for methods of approval and testing of backfill material or the report will be denied. We have received your Remediation Closure Report for Incident #NAPP2527332663 BEDROCK COMPRESSOR STATION. This Remediation Closure Report is approved.	12/19/2025