



November 12, 2025

**New Mexico Oil Conservation Division**

New Mexico Energy, Minerals, and Natural Resources Department  
1220 South St. Francis Drive  
Santa Fe, New Mexico 87505

**Re: Closure Request**  
**Bobwhite 12 State Com 3H CTB**  
**Incident Number NAPP2530931862**  
**Lea County, New Mexico**

To Whom It May Concern:

COG Operating, LLC, (COG), has prepared this *Closure Request* to document the findings of a liner integrity inspection conducted at the Bobwhite 12 State Com 3H CTB (Site) following the release of produced water within a lined containment. Based on the liner integrity inspection activities, COG is submitting this Closure Request, describing assessment activities that have occurred and requesting no further action and closure for Incident Number NAPP2530931862.

**SITE DESCRIPTION AND RELEASE SUMMARY**

The site is located in Unit A, Section 23, Township 21 South, Range 33 East, in Lea County, New Mexico (32.49998056, -103.51886389) and is associated with oil and gas exploration and production operations on surface lands managed by the New Mexico State Land Office (SLO).

On October 28, 2025, field personnel discovered a leak on a water dump causing five point three five one one (5.3511) barrels of produced water to be released into a lined containment. A vacuum truck was dispatched to the site to recover free-standing fluids and approximately five (5) barrels of fluid were recovered. The water dump was isolated to prevent fluid being further released. COG reported the release to the New Mexico Oil Conservation Division (NMOCD) and State Land Office on a *Release Notification Form C-141* (Form C-141) on November 5, 2025. The release was assigned Incident Number NAPP2530931862.

## SITE CHARACTERIZATION AND CLOSURE CRITERIA

The site is located within a low karst area. Based on a review of the New Mexico Office of State Engineers databases, there is no known water source within a 0.50-mile radius of the location. The closest well is located approximately 0.83 miles Northwest of the Site in Unit Letter P, S01, T21S, R33E and was drilled in 2023. The well has a reported depth of 58' feet below ground surface and no groundwater was encountered. Per the NMOCD regulatory criteria established in 19.15.29.12 NMAC, the following criteria were utilized in assessing the site.

- Benzene: 10 milligrams per kilogram (mg/kg).
- Benzene, toluene, ethylbenzene, and total xylenes (BTEX): 50 mg/kg.
- TPH: 100 mg/kg (GRO + DRO + MRO).
- Chloride: 600 mg/kg.

## LINER INTEGRITY INSPECTION ACTIVITIES

A 48-hour advance notice of the liner inspection was submitted to the NMOCD on November 5, 2025. Prior to conducting the liner integrity inspection, COG operations power washed the liner to remove dirt and debris and recover any residual produced water. A liner integrity inspection was conducted by Jacob Laird on November 10, 2025. Upon inspection, no rips, tears, holes, or damage was observed. The liner was determined to be sufficient, and all released fluids have been removed. Refer to photolog for details.

## CLOSURE REQUEST

Based on the liner inspection throughout the facility, the liner was determined to be sufficient. The release was contained laterally by the lined containment and the liner was performing as designed. No further actions are required at the site. COG, LLC respectfully requests that the New Mexico Oil Conservation Division grant closure approval for Incident Number NAPP2530931862.

Should you have any questions or concerns please do not hesitate to contact me.

Sincerely,

*Jacob Laird*

Jacob Laird  
Environmental Engineer  
jacob.laird@conocophillips.com

Appendices:

Figures- Site Map Overview, Topography Map, Secondary Containment Map

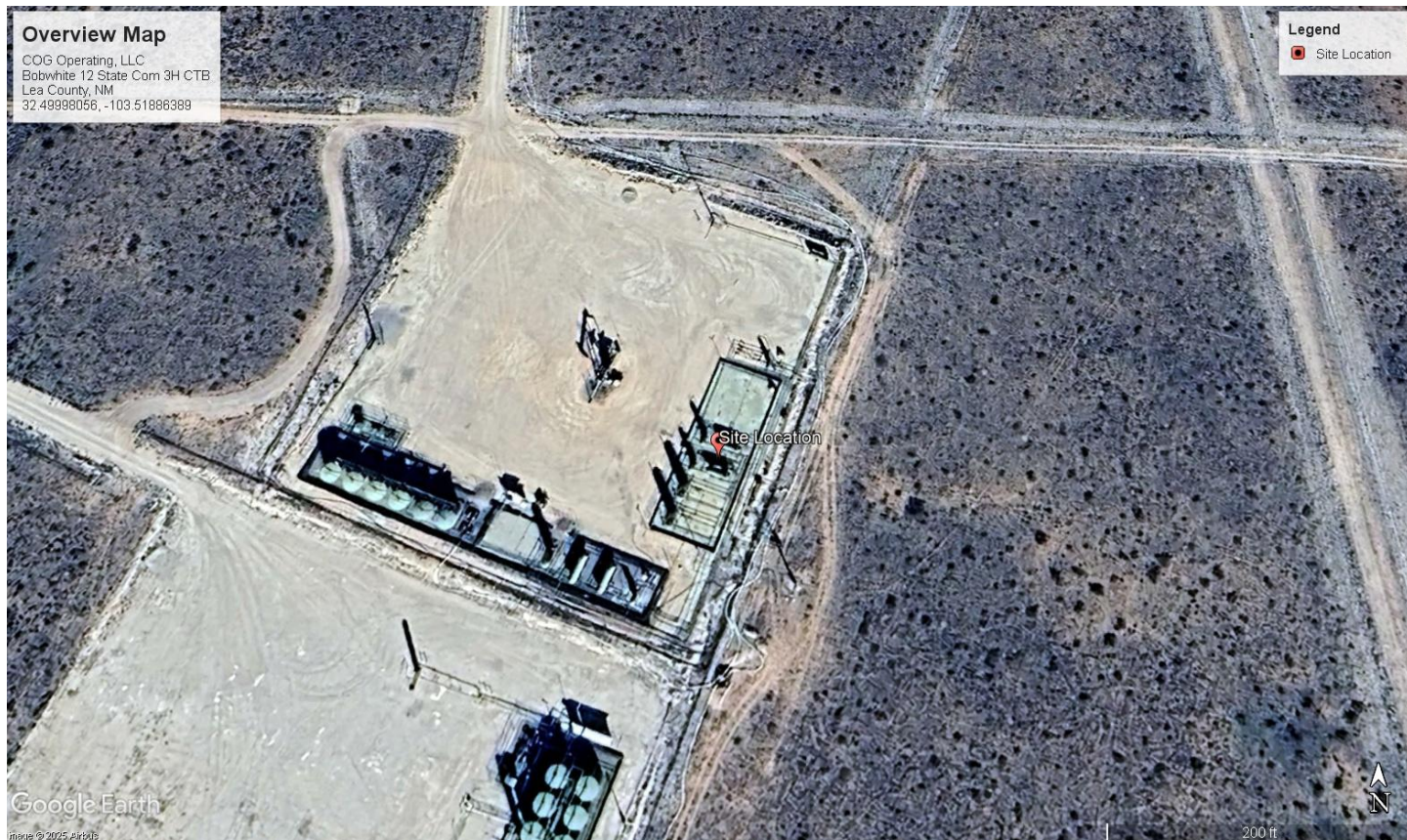
Appendix A: NMOCD Correspondence

Appendix B: Photolog

Appendix C: Site Characterization and Ground Water

Figures: Site Maps





## Overview Map

COG Operating, LLC  
Bobwhite 12 State Com 3H CTB  
Lea County, New Mexico  
32.49998056, -103.51886389



5





## Secondary Containment Map

COG Operating, LLC  
Bobwhite 12 State Com 3H CTB  
Lea County, New Mexico  
32.49998056, -103.51886389

Appendix A: NMOCD Correspondence





Sante Fe Main Office  
Phone: (505) 476-3441

General Information  
Phone: (505) 629-6116

Online Phone Directory  
<https://www.emnrd.nm.gov/ocd/contact-us>

**State of New Mexico**  
**Energy, Minerals and Natural Resources**  
**Oil Conservation Division**  
**1220 S. St Francis Dr.**  
**Santa Fe, NM 87505**

QUESTIONS

Action 523285

**QUESTIONS**

Operator: COG OPERATING LLC 600 W Illinois Ave Midland, TX 79701	OGRID: 229137
	Action Number: 523285
	Action Type: [C-141] Initial C-141 (C-141-v-Initial)

**QUESTIONS**

Prerequisites	
Incident ID (n#)	nAPP2530931862
Incident Name	NAPP2530931862 BOBWHITE 12 STATE COM 003H @ FAPP2203234647
Incident Type	Produced Water Release
Incident Status	Initial C-141 Received
Incident Facility	[fAPP2203234647] Bobwhite 12 St Com 3H Battery

Location of Release Source	
<i>Please answer all the questions in this group.</i>	
Site Name	Bobwhite 12 State Com 003H
Date Release Discovered	10/28/2025
Surface Owner	State

Incident Details	
<i>Please answer all the questions in this group.</i>	
Incident Type	Produced Water Release
Did this release result in a fire or is the result of a fire	No
Did this release result in any injuries	No
Has this release reached or does it have a reasonable probability of reaching a watercourse	No
Has this release endangered or does it have a reasonable probability of endangering public health	No
Has this release substantially damaged or will it substantially damage property or the environment	No
Is this release of a volume that is or may with reasonable probability be detrimental to fresh water	No

Nature and Volume of Release	
<i>Material(s) released, please answer all that apply below. Any calculations or specific justifications for the volumes provided should be attached to the follow-up C-141 submission.</i>	
Crude Oil Released (bbls) Details	Not answered.
Produced Water Released (bbls) Details	Cause: Equipment Failure   Dump Line   Produced Water   Released: 5 BBL   Recovered: 5 BBL   Lost: 0 BBL.
Is the concentration of chloride in the produced water >10,000 mg/l	Yes
Condensate Released (bbls) Details	Not answered.
Natural Gas Vented (Mcf) Details	Not answered.
Natural Gas Flared (Mcf) Details	Not answered.
Other Released Details	Not answered.
Are there additional details for the questions above (i.e. any answer containing Other, Specify, Unknown, and/or Fire, or any negative lost amounts)	Not answered.

Sante Fe Main Office  
Phone: (505) 476-3441

General Information  
Phone: (505) 629-6116

Online Phone Directory  
<https://www.emnrd.nm.gov/ocd/contact-us>

**State of New Mexico**  
**Energy, Minerals and Natural Resources**  
**Oil Conservation Division**  
**1220 S. St Francis Dr.**  
**Santa Fe, NM 87505**

QUESTIONS, Page 2

Action 523285

**QUESTIONS (continued)**

Operator: COG OPERATING LLC 600 W Illinois Ave Midland, TX 79701	OGRID: 229137
	Action Number: 523285
	Action Type: [C-141] Initial C-141 (C-141-v-Initial)

**QUESTIONS**

<b>Nature and Volume of Release (continued)</b>	
Is this a gas only submission (i.e. only significant Mcf values reported)	More info needed to determine if this will be treated as a "gas only" report.
Was this a major release as defined by Subsection A of 19.15.29.7 NMAC	No
Reasons why this would be considered a submission for a notification of a major release	Unavailable.
With the implementation of the 19.15.27 NMAC (05/25/2021), venting and/or flaring of natural gas (i.e. gas only) are to be submitted on the C-129 form.	

**Initial Response**

The responsible party must undertake the following actions immediately unless they could create a safety hazard that would result in injury.

The source of the release has been stopped	True
The impacted area has been secured to protect human health and the environment	True
Released materials have been contained via the use of berms or dikes, absorbent pads, or other containment devices	True
All free liquids and recoverable materials have been removed and managed appropriately	True
If all the actions described above have not been undertaken, explain why	Not answered.

Per Paragraph (4) of Subsection B of 19.15.29.8 NMAC the responsible party may commence remediation immediately after discovery of a release. If remediation has begun, please prepare and attach a narrative of actions to date in the follow-up C-141 submission. If remedial efforts have been successfully completed or if the release occurred within a lined containment area (see Subparagraph (a) of Paragraph (5) of Subsection A of 19.15.29.11 NMAC), please prepare and attach all information needed for closure evaluation in the follow-up C-141 submission.

I hereby certify that the information given above is true and complete to the best of my knowledge and understand that pursuant to OCD rules and regulations all operators are required to report and/or file certain release notifications and perform corrective actions for releases which may endanger public health or the environment. The acceptance of a C-141 report by the OCD does not relieve the operator of liability should their operations have failed to adequately investigate and remediate contamination that pose a threat to groundwater, surface water, human health or the environment. In addition, OCD acceptance of a C-141 report does not relieve the operator of responsibility for compliance with any other federal, state, or local laws and/or regulations.

I hereby agree and sign off to the above statement	Name: Brittany Esparza Title: Environmental Technician Email: brittany.Esparza@ConocoPhillips.com Date: 11/05/2025
--	---

Sante Fe Main Office  
Phone: (505) 476-3441

General Information  
Phone: (505) 629-6116

Online Phone Directory  
<https://www.emnrd.nm.gov/ocd/contact-us>

**State of New Mexico**  
**Energy, Minerals and Natural Resources**  
**Oil Conservation Division**  
**1220 S. St Francis Dr.**  
**Santa Fe, NM 87505**

QUESTIONS, Page 3

Action 523285

**QUESTIONS (continued)**

Operator: COG OPERATING LLC 600 W Illinois Ave Midland, TX 79701	OGRID: 229137
	Action Number: 523285
	Action Type: [C-141] Initial C-141 (C-141-v-Initial)

**QUESTIONS**

<b>Site Characterization</b>	
<i>Please answer all the questions in this group (only required when seeking remediation plan approval and beyond). This information must be provided to the appropriate district office no later than 90 days after the release discovery date.</i>	
What is the shallowest depth to groundwater beneath the area affected by the release in feet below ground surface (ft bgs)	Not answered.
What method was used to determine the depth to ground water	Not answered.
Did this release impact groundwater or surface water	Not answered.
<b>What is the minimum distance, between the closest lateral extents of the release and the following surface areas:</b>	
A continuously flowing watercourse or any other significant watercourse	Not answered.
Any lakebed, sinkhole, or playa lake (measured from the ordinary high-water mark)	Not answered.
An occupied permanent residence, school, hospital, institution, or church	Not answered.
A spring or a private domestic fresh water well used by less than five households for domestic or stock watering purposes	Not answered.
Any other fresh water well or spring	Not answered.
Incorporated municipal boundaries or a defined municipal fresh water well field	Not answered.
A wetland	Not answered.
A subsurface mine	Not answered.
An (non-karst) unstable area	Not answered.
Categorize the risk of this well / site being in a karst geology	Not answered.
A 100-year floodplain	Not answered.
Did the release impact areas not on an exploration, development, production, or storage site	Not answered.

<b>Remediation Plan</b>	
<i>Please answer all the questions that apply or are indicated. This information must be provided to the appropriate district office no later than 90 days after the release discovery date.</i>	
Requesting a remediation plan approval with this submission	No
<i>The OCD recognizes that proposed remediation measures may have to be minimally adjusted in accordance with the physical realities encountered during remediation. If the responsible party has any need to significantly deviate from the remediation plan proposed, then it should consult with the division to determine if another remediation plan submission is required.</i>	



Sante Fe Main Office  
Phone: (505) 476-3441

General Information  
Phone: (505) 629-6116

Online Phone Directory  
<https://www.emnrd.nm.gov/ocd/contact-us>

State of New Mexico  
Energy, Minerals and Natural Resources  
Oil Conservation Division  
1220 S. St Francis Dr.  
Santa Fe, NM 87505

CONDITIONS

Action 523285

CONDITIONS

Operator: COG OPERATING LLC 600 W Illinois Ave Midland, TX 79701	OGRID: 229137
	Action Number: 523285
	Action Type: [C-141] Initial C-141 (C-141-v-Initial)

CONDITIONS

Created By	Condition	Condition Date
scott.rodgers	None	11/5/2025

Sante Fe Main Office  
Phone: (505) 476-3441

General Information  
Phone: (505) 629-6116

Online Phone Directory  
<https://www.emnrd.nm.gov/ocd/contact-us>

**State of New Mexico**  
**Energy, Minerals and Natural Resources**  
**Oil Conservation Division**  
**1220 S. St Francis Dr.**  
**Santa Fe, NM 87505**

QUESTIONS

Action 523468

**QUESTIONS**

Operator: COG OPERATING LLC 600 W Illinois Ave Midland, TX 79701	OGRID: 229137
	Action Number: 523468
	Action Type: [NOTIFY] Notification Of Liner Inspection (C-141L)

**QUESTIONS**

Prerequisites	
Incident ID (n#)	nAPP2530931862
Incident Name	NAPP2530931862 BOBWHITE 12 STATE COM 003H @ FAPP2203234647
Incident Type	Produced Water Release
Incident Status	Initial C-141 Approved
Incident Facility	[fAPP2203234647] Bobwhite 12 St Com 3H Battery

Location of Release Source	
Site Name	Bobwhite 12 State Com 003H
Date Release Discovered	10/28/2025
Surface Owner	State

Liner Inspection Event Information	
<i>Please answer all the questions in this group.</i>	
What is the liner inspection surface area in square feet	7,173
Have all the impacted materials been removed from the liner	Yes
Liner inspection date pursuant to Subparagraph (a) of Paragraph (5) of Subsection A of 19.15.29.11 NMAC	11/10/2025
Time liner inspection will commence	12:00 PM
Please provide any information necessary for observers to liner inspection	Jacob Laird 575-703-5482
Please provide any information necessary for navigation to liner inspection site	32.49998, -103.51866

Sante Fe Main Office  
Phone: (505) 476-3441

General Information  
Phone: (505) 629-6116

Online Phone Directory  
<https://www.emnrd.nm.gov/oed/contact-us>

State of New Mexico  
Energy, Minerals and Natural Resources  
Oil Conservation Division  
1220 S. St Francis Dr.  
Santa Fe, NM 87505

CONDITIONS

Action 523468

CONDITIONS

Operator: COG OPERATING LLC 600 W Illinois Ave Midland, TX 79701	OGRID: 229137
	Action Number: 523468
	Action Type: [NOTIFY] Notification Of Liner Inspection (C-141L)

CONDITIONS

Created By	Condition	Condition Date
jlaire	Failure to notify the OCD of liner inspections including any changes in date/time per the requirements of 19.15.29.11.A(5)(a)(ii) NMAC, may result in the inspection not being accepted.	11/5/2025

## Appendix B: Photolog

## Photographic Log

**Facility:** Bobwhite 12 State Com 3H CTB

**County:** Lea County, New Mexico

**Description:** Facility Sign



**Facility:** Bobwhite 12 State Com 3H CTB

**County:** Lea County, New Mexico

**Description:** Original release photo from 10/28/2025



**Facility:** Bobwhite 12 State Com 3H CTB

**County:** Lea County, New Mexico

**Description:** Original release photo from 10/28/2025





**Facility:** Bobwhite 12 State Com 3H CTB

**County:** Lea County, New Mexico

**Description:** View facing South/Southwest.  
Lined area to the North of production equipment and piping.



**Facility:** Bobwhite 12 State Com 3H CTB

**County:** Lea County, New Mexico

**Description:** View facing South/Southwest.  
Lined area to the North of production equipment and piping.



**Facility:** Bobwhite 12 State Com 3H CTB

**County:** Lea County, New Mexico

**Description:** View facing South/Southwest.  
Lined area to the North of production equipment and piping.



**Facility:** Bobwhite 12 State Com 3H CTB

**County:** Lea County, New Mexico

**Description:** View facing South/Southwest. Lined area to the North of production equipment and piping.



**Facility:** Bobwhite 12 State Com 3H CTB

**County:** Lea County, New Mexico

**Description:** View facing South/Southwest. Lined area to the North of production equipment and piping.



**Facility:** Bobwhite 12 State Com 3H CTB

**County:** Lea County, New Mexico

**Description:** View facing South/Southwest. Lined area to the North of production equipment and piping.





**Facility:** Bobwhite 12 State Com 3H CTB

**County:** Lea County, New Mexico

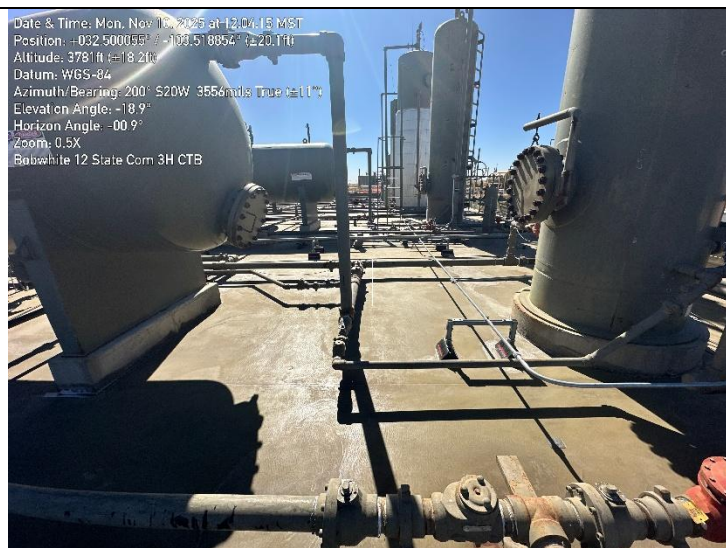
**Description:** View facing South/Southwest. Lined area near production equipment and piping.



**Facility:** Bobwhite 12 State Com 3H CTB

**County:** Lea County, New Mexico

**Description:** View facing South/Southwest. Lined area near production equipment and piping.



**Facility:** Bobwhite 12 State Com 3H CTB

**County:** Lea County, New Mexico

**Description:** View facing South/Southwest. Lined area near production equipment and piping.





**Facility:** Bobwhite 12 State Com 3H CTB

**County:** Lea County, New Mexico

**Description:** View facing South/Southwest. Lined area near production equipment and piping.



**Facility:** Bobwhite 12 State Com 3H CTB

**County:** Lea County, New Mexico

**Description:** View facing South/Southwest. Lined area near production equipment and piping.



**Facility:** Bobwhite 12 State Com 3H CTB

**County:** Lea County, New Mexico

**Description:** View facing East/Southeast. Lined area near production equipment and piping.





**Facility:** Bobwhite 12 State Com 3H CTB

**County:** Lea County, New Mexico

**Description:** View facing South/Southwest. Lined area near production equipment and piping.

Date & Time: Mon, Nov 10, 2025 at 12:05:27 MST  
Position: +032.499989° E -100.918767° W ±21.4ft  
Altitude: 3780ft ±18.4ft  
Datum: WGS-84  
Azimuth Bearing: 199° 51'0" W 3688mils True ±111°  
Elevation Angle: -15.4°  
Horizon Angle: +00.2°  
Zoom: 0.5X  
Bobwhite 12 State Com 3H CTB



**Facility:** Bobwhite 12 State Com 3H CTB

**County:** Lea County, New Mexico

**Description:** View facing South/Southwest. Lined area near production equipment and piping.

Date & Time: Mon, Nov 10, 2025 at 12:06:49 MST  
Position: +032.499977° E -100.918921° W ±16.4ft  
Altitude: 3778ft ±14.5ft  
Datum: WGS-84  
Azimuth Bearing: 211° 50'1" W 3751mils True ±111°  
Elevation Angle: -15.8°  
Horizon Angle: +00.4°  
Zoom: 0.5X  
Bobwhite 12 State Com 3H CTB



**Facility:** Bobwhite 12 State Com 3H CTB

**County:** Lea County, New Mexico

**Description:** View facing South/Southwest. Lined area near production equipment and piping.

Date & Time: Mon, Nov 10, 2025 at 12:06:09 MST  
Position: +032.499972° E -100.918882° W ±17.0ft  
Altitude: 3781ft ±14.1ft  
Datum: WGS-84  
Azimuth Bearing: 213° 53'5" W 3822mils True ±111°  
Elevation Angle: -20.1°  
Horizon Angle: +00.8°  
Zoom: 0.5X  
Bobwhite 12 State Com 3H CTB





**Facility:** Bobwhite 12 State Com 3H CTB

**County:** Lea County, New Mexico

**Description:** View facing East/Southeast. Lined area near production equipment and piping.

Date & Time: Mon, Nov 10, 2025 at 12:06:54 MST  
Position: -032.499929° / -103.518907° ±15.6ft  
Altitude: 3784ft ±13.1ft  
Datum: WGS-84  
Azimuth/Bearing: 09° S83E 1724mils True ±11°  
Elevation Angle: -07.2°  
Horizon Angle: -00.2°  
Zoom: 0.5X  
Bobwhite 12 State Com 3H CTB



**Facility:** Bobwhite 12 State Com 3H CTB

**County:** Lea County, New Mexico

**Description:** View facing South/Southwest. Lined area near production equipment and piping.

Date & Time: Mon, Nov 10, 2025 at 12:09:06 MST  
Position: -032.499902° / -103.518869° ±15.6ft  
Altitude: 3782ft ±24.2ft  
Datum: WGS-84  
Azimuth/Bearing: 194° S14W 3449mils True ±11°  
Elevation Angle: -16.9°  
Horizon Angle: -00.7°  
Zoom: 0.5X  
Bobwhite 12 State Com 3H CTB



**Facility:** Bobwhite 12 State Com 3H CTB

**County:** Lea County, New Mexico

**Description:** View facing South/Southwest. Lined area near production equipment and piping.

Date & Time: Mon, Nov 10, 2025 at 12:07:44 MST  
Position: -032.499922° / -103.518949° ±15.7ft  
Altitude: 3763ft ±9.8ft  
Datum: WGS-84  
Azimuth/Bearing: 22° S42W 3947mils True ±11°  
Elevation Angle: -13.5°  
Horizon Angle: -00.9°  
Zoom: 0.5X  
Bobwhite 12 State Com 3H CTB





**Facility:** Bobwhite 12 State Com 3H CTB

**County:** Lea County, New Mexico

**Description:** View facing South/Southwest. Lined area near production equipment and piping.

Date & Time: Mon, Nov 10, 2025 at 1:08:02 MST  
Position: +032.4999027° E -103.518836° W ±16.4ft  
Altitude: 3782ft ±9.6ft  
Datum: WGS-84  
Azimuth/Bearing: 194° S16W 348mils True (±11°)  
Elevation Angle: -16.9°  
Horizon Angle: -00.2°  
Zoom: 0.5X  
Bobwhite 12 State Com 3H CTB



**Facility:** Bobwhite 12 State Com 3H CTB

**County:** Lea County, New Mexico

**Description:** View facing South/Southwest. Lined area near production equipment and piping.

Date & Time: Mon, Nov 10, 2025 at 12:06:14 MST  
Position: +032.4999027° E -103.518836° W ±17.3ft  
Altitude: 3782ft ±10.4ft  
Datum: WGS-84  
Azimuth/Bearing: 193° S17W 3502mils True (±11°)  
Elevation Angle: -17.1°  
Horizon Angle: -00.3°  
Zoom: 0.5X  
Bobwhite 12 State Com 3H CTB

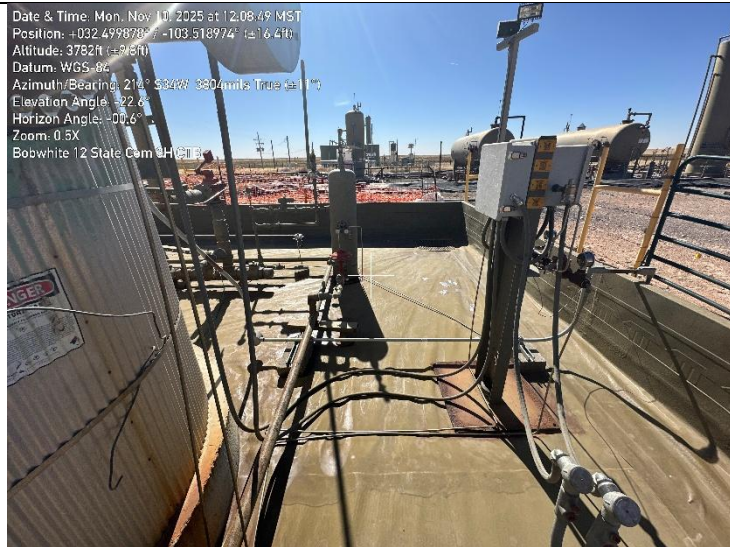


**Facility:** Bobwhite 12 State Com 3H CTB

**County:** Lea County, New Mexico

**Description:** View facing South/Southwest. Lined area near production equipment and piping.

Date & Time: Mon, Nov 10, 2025 at 12:08:49 MST  
Position: +032.499878° E -103.518974° W ±16.4ft  
Altitude: 3782ft ±9.6ft  
Datum: WGS-84  
Azimuth/Bearing: 214° S24W 3804mils True (±11°)  
Elevation Angle: -22.6°  
Horizon Angle: -00.6°  
Zoom: 0.5X  
Bobwhite 12 State Com 3H CTB





**Facility:** Bobwhite 12 State Com 3H CTB

**County:** Lea County, New Mexico

**Description:** View facing South/Southwest. Lined area near production equipment and piping.

Date & Time: Mon, Nov 10, 2025 at 12:09:05 MST  
Position: -103.499855° / -103.518911° (±17.9ft)  
Altitude: 3762ft (±9.8ft)  
Datum: WGS-84  
Azimuth/Bearing: 194° S14W 3446mils True (±11°)  
Elevation Angle: -17.2°  
Horizon Angle: -00.1°  
Zoom: 0.5X  
Bobwhite 12 State Com 3H CTB



**Facility:** Bobwhite 12 State Com 3H CTB

**County:** Lea County, New Mexico

**Description:** View facing South/Southwest. Lined area near production equipment and piping.

Date & Time: Mon, Nov 10, 2025 at 12:09:14 MST  
Position: -103.499847° / -103.518861° (±20.1ft)  
Altitude: 3762ft (±12.4ft)  
Datum: WGS-84  
Azimuth/Bearing: 201° S21W 3573mils True (±11°)  
Elevation Angle: -17.4°  
Horizon Angle: -01.2°  
Zoom: 0.5X  
Bobwhite 12 State Com 3H CTB



**Facility:** Bobwhite 12 State Com 3H CTB

**County:** Lea County, New Mexico

**Description:** View facing East/Southeast. Lined area near production equipment and piping.

Date & Time: Mon, Nov 10, 2025 at 12:09:35 MST  
Position: -103.499837° / -103.518984° (±18.8ft)  
Altitude: 3760ft (±13.5ft)  
Datum: WGS-84  
Azimuth/Bearing: 119° S61E 2116mils True (±11°)  
Elevation Angle: -16.5°  
Horizon Angle: -00.8°  
Zoom: 0.5X  
Bobwhite 12 State Com 3H CTB



**Facility:** Bobwhite 12 State Com 3H CTB

**County:** Lea County, New Mexico

**Description:** View facing East/Southeast. Lined area near production equipment and piping.



## Appendix C: Site Characterization and Ground Water



New Mexico Office of the State Engineer

Water Column/Average Depth to Water

(A CLW##### in the POD suffix indicates the POD has been replaced & no longer serves a water right file.)

(R=POD has been replaced, O=orphaned, C=the file is closed)

(quarters are smallest to largest)

POD Number	Code	Sub basin	County	Q64	Q16	Q4	Sec	Tws	Range	X	Y	Map	Distance (meters)	Well Depth (In feet)	Depth Water	Water Column
<a href="#">CP 01981 POD1</a>		CP	LE	NE	NE	SW	01	21S	33E	638346.3	3597890.1		1331	58		

Average Depth to Water: 0 feet

Minimum Depth: 0 feet

Maximum Depth: 0 feet

Record Count: 1

Basin/County Search:

County: LE

UTM Filters (in meters):

Easting: 639143.32

Northing: 3596823.46

Radius: 1500

\* UTM location was derived from PLSS - see Help

The data is furnished by the NMOSE/ISC and is accepted by the recipient with the expressed understanding that the OSE/ISC make no warranties, expressed or implied, concerning the accuracy, completeness, reliability, usability, or suitability for any particular purpose of the data.





## WELL RECORD &amp; LOG

OFFICE OF THE STATE ENGINEER

www.ose.state.nm.us

OSED DEC 14 2023 PM 1:46

1. GENERAL AND WELL LOCATION	OSE POD NO. (WELL NO.) CP-01981 POD1		WELL TAG ID NO.		OSE FILE NO(S). CP-1981			
	WELL OWNER NAME(S) Solaris Water Midstream				PHONE (OPTIONAL)			
	WELL OWNER MAILING ADDRESS 3305 Boyd Drive				CITY Carlsbad		STATE NM	
					ZIP 88220			
	WELL LOCATION (FROM GPS)	DEGREES 32	MINUTES 30	SECONDS 34.92	N	* ACCURACY REQUIRED: ONE TENTH OF A SECOND		
	LONGITUDE -103	31	37.884"	W	* DATUM REQUIRED: WGS 84			
DESCRIPTION RELATING WELL LOCATION TO STREET ADDRESS AND COMMON LANDMARKS - PLSS (SECTION, TOWNSHIP, RANGE) WHERE AVAILABLE								
2. DRILLING & CASING INFORMATION	LICENSE NO. WD 1680		NAME OF LICENSED DRILLER Jason Maley			NAME OF WELL DRILLING COMPANY Vision Resources, Inc		
	DRILLING STARTED 12/13/2023		DRILLING ENDED 12/13/2023		DEPTH OF COMPLETED WELL (FT) 58 ft	BORE HOLE DEPTH (FT) 58	DEPTH WATER FIRST ENCOUNTERED (FT) dry	
	COMPLETED WELL IS: <input type="checkbox"/> ARTESIAN *add Centralizer info below <input checked="" type="checkbox"/> DRY HOLE <input type="checkbox"/> SHALLOW (UNCONFINED)				STATIC WATER LEVEL IN COMPLETED WELL (FT) 0		DATE STATIC MEASURED 12/13/23	
	DRILLING FLUID: <input checked="" type="checkbox"/> AIR <input type="checkbox"/> MUD				ADDITIVES - SPECIFY:			
	DRILLING METHOD: <input checked="" type="checkbox"/> ROTARY <input type="checkbox"/> HAMMER <input type="checkbox"/> CABLE TOOL <input type="checkbox"/> OTHER - SPECIFY:				CHECK HERE IF PITLESS ADAPTER IS INSTALLED <input type="checkbox"/>			
	DEPTH (feet bgl) FROM TO		BORE HOLE DIAM (inches)	CASING MATERIAL AND/OR GRADE (include each casing string, and note sections of screen)	CASING CONNECTION TYPE (add coupling diameter)	CASING INSIDE DIAM. (inches)	CASING WALL THICKNESS (inches)	SLOT SIZE (inches)
	+2 48		6	PVC schl 40	thread	2	schl 40	
	48 58		6	PVC schl 40	thread	2	schl 40	.015
3. ANNULAR MATERIAL	DEPTH (feet bgl) FROM TO		BORE HOLE DIAM. (inches)	LIST ANNULAR SEAL MATERIAL AND GRAVEL PACK SIZE- RANGE BY INTERVAL *(if using Centralizers for Artesian wells- indicate the spacing below)		AMOUNT (cubic feet)	METHOD OF PLACEMENT	
				Left open going to plug in 72 hrs				

FOR OSE INTERNAL USE

WR-20 WELL RECORD &amp; LOG (Version 09/22/2022)

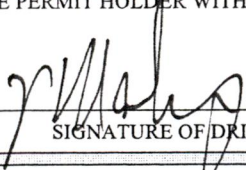
FILE NO. CP-1981-POD1	POD NO. 1	TRN NO. 752074
LOCATION 21.33.01.223	WELL TAG ID NO.	PAGE 1 OF 2

4. HYDROGEOLOGIC LOG OF WELL	DEPTH (feet bgl)		THICKNESS (feet)	COLOR AND TYPE OF MATERIAL ENCOUNTERED - INCLUDE WATER-BEARING CAVITIES OR FRACTURE ZONES (attach supplemental sheets to fully describe all units)	WATER BEARING? (YES / NO)	ESTIMATED YIELD FOR WATER- BEARING ZONES (gpm)
	FROM	TO				
	0	18	18	off white Caliche hard	Y <del>N</del>	
	18	58	40	red sand with caliche stringers mostly fine sand	Y <del>N</del>	
					Y N	
					Y N	
					Y N	
					Y N	
					Y N	
					Y N	
					Y N	
					Y N	
					Y N	
					Y N	
					Y N	
					Y N	
					Y N	
					Y N	
					Y N	
					Y N	
					Y N	
					Y N	
					Y N	
					Y N	
METHOD USED TO ESTIMATE YIELD OF WATER-BEARING STRATA: <input type="checkbox"/> PUMP <input type="checkbox"/> AIR LIFT <input checked="" type="checkbox"/> BAILER <input type="checkbox"/> OTHER - SPECIFY:					TOTAL ESTIMATED WELL YIELD (gpm):	

5. TEST; RIG SUPERVISION	WELL TEST	TEST RESULTS - ATTACH A COPY OF DATA COLLECTED DURING WELL TESTING, INCLUDING DISCHARGE METHOD, START TIME, END TIME, AND A TABLE SHOWING DISCHARGE AND DRAWDOWN OVER THE TESTING PERIOD.
	MISCELLANEOUS INFORMATION:  <div style="text-align: right; color: blue;">OSE DII DEC 14 2023 PM 1:46</div>	
PRINT NAME(S) OF DRILL RIG SUPERVISOR(S) THAT PROVIDED ONSITE SUPERVISION OF WELL CONSTRUCTION OTHER THAN LICENSEE:		

6. SIGNATURE	THE UNDERSIGNED HEREBY CERTIFIES THAT, TO THE BEST OF HIS OR HER KNOWLEDGE AND BELIEF, THE FOREGOING IS A TRUE AND CORRECT RECORD OF THE ABOVE DESCRIBED HOLE AND THAT HE OR SHE WILL FILE THIS WELL RECORD WITH THE STATE ENGINEER AND THE PERMIT HOLDER WITHIN 30 DAYS AFTER COMPLETION OF WELL DRILLING:	
	 Jason Maley	12/13/2023
	SIGNATURE OF DRILLER / PRINT SIGNEE NAME	DATE

FOR OSE INTERNAL USE		WR-20 WELL RECORD & LOG (Version 09/22/2022)	
FILE NO. CP-1981-POD 1	POD NO. 1	TRN NO. 752074	
LOCATION 21.33.01.223	WELL TAG ID NO.	PAGE 2 OF 2	



Mike A. Hamman, P.E.  
State Engineer



Well Office  
1900 WEST SECOND STREET  
ROSWELL, NM 88201

**STATE OF NEW MEXICO  
OFFICE OF THE STATE ENGINEER**

Trn Nbr: 752074  
File Nbr: CP 01981  
Well File Nbr: CP 01981 POD1

Dec. 14, 2023

ROB KIRK  
SOLARIS WATER MIDSTREAM  
3305 BOYD DRIVE  
CARLSBAD, NM 88220

Greetings:

The above numbered permit was issued in your name on 10/16/2023.

The Well Record was received in this office on 12/14/2023, stating that it had been completed on 12/13/2023, and was a dry well. The well is to be plugged according to 19.27.4.30 NMAC.

Please note that another well can be drilled under this permit if the well is completed and the well log filed on or before 10/15/2024.

If you have any questions, please feel free to contact us.

Sincerely,

A handwritten signature in cursive script, appearing to read "Maret Thompson".

Maret Thompson  
(575) 622-6521

drywell



## Neatest Water Well Map

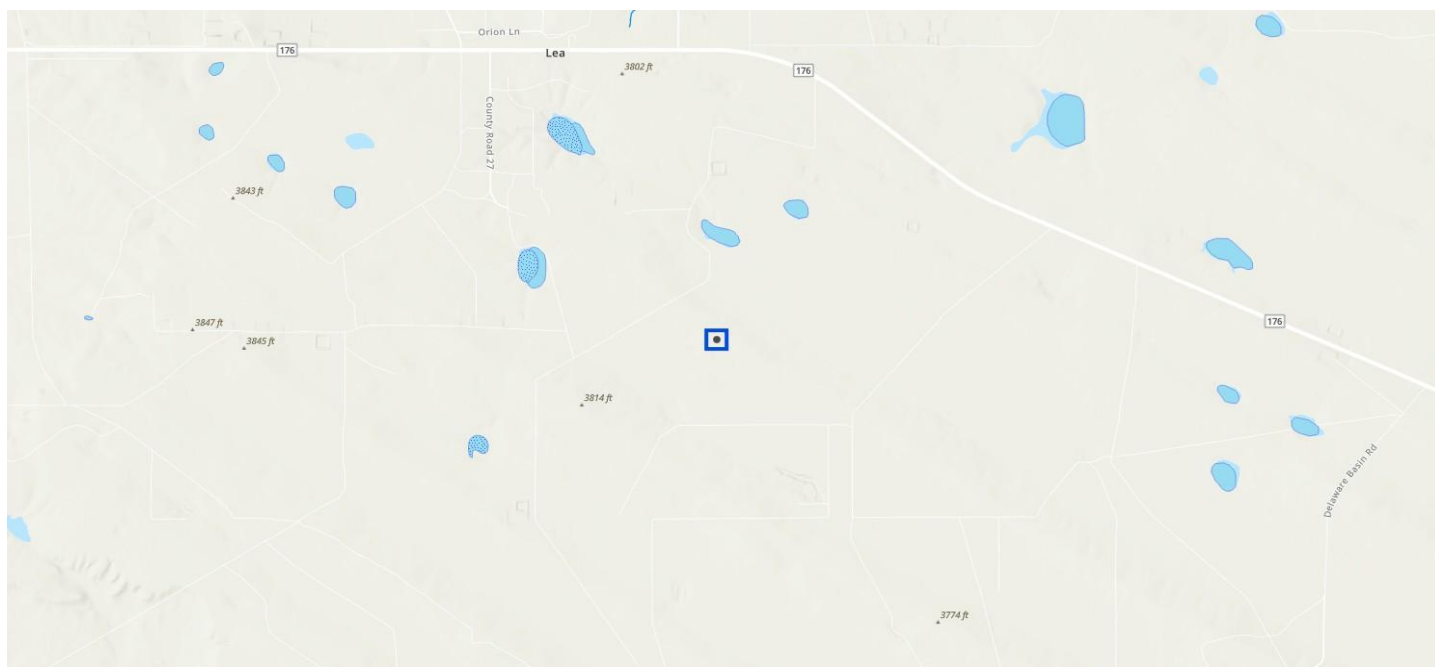
COG Operating, LLC  
Bobwhite 12 State Com 3H CTB  
Lea County, New Mexico  
32.49998056, -103.51886389





## Karst Map

COG Operating, LLC  
Bobwhite 12 State Com 3H CTB  
Lea County, New Mexico  
32.49998056, -103.51886389



# Hydrology Map

COG Operating, LLC  
Bobwhite 12 State Com 3H CTB  
Lea County, New Mexico  
32.49998056, -103.51886389

Sante Fe Main Office  
Phone: (505) 476-3441

General Information  
Phone: (505) 629-6116

Online Phone Directory  
<https://www.emnrd.nm.gov/ocd/contact-us>

**State of New Mexico**  
**Energy, Minerals and Natural Resources**  
**Oil Conservation Division**  
**1220 S. St Francis Dr.**  
**Santa Fe, NM 87505**

QUESTIONS

Action 528519

**QUESTIONS**

Operator: COG OPERATING LLC 600 W Illinois Ave Midland, TX 79701	OGRID: 229137
	Action Number: 528519
	Action Type: [C-141] Remediation Closure Request C-141 (C-141-v-Closure)

**QUESTIONS**

<b>Prerequisites</b>	
Incident ID (n#)	nAPP2530931862
Incident Name	NAPP2530931862 BOBWHITE 12 STATE COM 003H @ FAPP2203234647
Incident Type	Produced Water Release
Incident Status	Remediation Closure Report Received
Incident Facility	[fAPP2203234647] Bobwhite 12 St Com 3H Battery

**Location of Release Source**

Please answer all the questions in this group.

Site Name	Bobwhite 12 State Com 003H
Date Release Discovered	10/28/2025
Surface Owner	State

**Incident Details**

Please answer all the questions in this group.

Incident Type	Produced Water Release
Did this release result in a fire or is the result of a fire	No
Did this release result in any injuries	No
Has this release reached or does it have a reasonable probability of reaching a watercourse	No
Has this release endangered or does it have a reasonable probability of endangering public health	No
Has this release substantially damaged or will it substantially damage property or the environment	No
Is this release of a volume that is or may with reasonable probability be detrimental to fresh water	No

**Nature and Volume of Release**

Material(s) released, please answer all that apply below. Any calculations or specific justifications for the volumes provided should be attached to the follow-up C-141 submission.

Crude Oil Released (bbls) Details	Not answered.
Produced Water Released (bbls) Details	Cause: Equipment Failure   Dump Line   Produced Water   Released: 5 BBL   Recovered: 5 BBL   Lost: 0 BBL.
Is the concentration of chloride in the produced water >10,000 mg/l	Yes
Condensate Released (bbls) Details	Not answered.
Natural Gas Vented (Mcf) Details	Not answered.
Natural Gas Flared (Mcf) Details	Not answered.
Other Released Details	Not answered.
Are there additional details for the questions above (i.e. any answer containing Other, Specify, Unknown, and/or Fire, or any negative lost amounts)	Not answered.

Sante Fe Main Office  
Phone: (505) 476-3441

General Information  
Phone: (505) 629-6116

Online Phone Directory  
<https://www.emnrd.nm.gov/ocd/contact-us>

**State of New Mexico**  
**Energy, Minerals and Natural Resources**  
**Oil Conservation Division**  
**1220 S. St Francis Dr.**  
**Santa Fe, NM 87505**

QUESTIONS, Page 2

Action 528519

**QUESTIONS (continued)**

Operator: COG OPERATING LLC 600 W Illinois Ave Midland, TX 79701	OGRID: 229137
	Action Number: 528519
	Action Type: [C-141] Remediation Closure Request C-141 (C-141-v-Closure)

**QUESTIONS**

<b>Nature and Volume of Release (continued)</b>	
Is this a gas only submission (i.e. only significant Mcf values reported)	<b>More info needed to determine if this will be treated as a "gas only" report.</b>
Was this a major release as defined by Subsection A of 19.15.29.7 NMAC	<b>No</b>
Reasons why this would be considered a submission for a notification of a major release	<i>Unavailable.</i>
<i>With the implementation of the 19.15.27 NMAC (05/25/2021), venting and/or flaring of natural gas (i.e. gas only) are to be submitted on the C-129 form.</i>	

**Initial Response**

*The responsible party must undertake the following actions immediately unless they could create a safety hazard that would result in injury.*

The source of the release has been stopped	<b>True</b>
The impacted area has been secured to protect human health and the environment	<b>True</b>
Released materials have been contained via the use of berms or dikes, absorbent pads, or other containment devices	<b>True</b>
All free liquids and recoverable materials have been removed and managed appropriately	<b>True</b>
If all the actions described above have not been undertaken, explain why	<i>Not answered.</i>

*Per Paragraph (4) of Subsection B of 19.15.29.8 NMAC the responsible party may commence remediation immediately after discovery of a release. If remediation has begun, please prepare and attach a narrative of actions to date in the follow-up C-141 submission. If remedial efforts have been successfully completed or if the release occurred within a lined containment area (see Subparagraph (a) of Paragraph (5) of Subsection A of 19.15.29.11 NMAC), please prepare and attach all information needed for closure evaluation in the follow-up C-141 submission.*

I hereby certify that the information given above is true and complete to the best of my knowledge and understand that pursuant to OCD rules and regulations all operators are required to report and/or file certain release notifications and perform corrective actions for releases which may endanger public health or the environment. The acceptance of a C-141 report by the OCD does not relieve the operator of liability should their operations have failed to adequately investigate and remediate contamination that pose a threat to groundwater, surface water, human health or the environment. In addition, OCD acceptance of a C-141 report does not relieve the operator of responsibility for compliance with any other federal, state, or local laws and/or regulations.

I hereby agree and sign off to the above statement	Name: Jacob Laird Title: Environmental Engineer Email: <a href="mailto:jacob.laird@conocophillips.com">jacob.laird@conocophillips.com</a> Date: 11/20/2025
--	---



Sante Fe Main Office  
Phone: (505) 476-3441

General Information  
Phone: (505) 629-6116

Online Phone Directory  
<https://www.emnrd.nm.gov/ocd/contact-us>

**State of New Mexico**  
**Energy, Minerals and Natural Resources**  
**Oil Conservation Division**  
**1220 S. St Francis Dr.**  
**Santa Fe, NM 87505**

QUESTIONS, Page 3

Action 528519

**QUESTIONS (continued)**

Operator: COG OPERATING LLC 600 W Illinois Ave Midland, TX 79701	OGRID:
	229137
	Action Number:
	528519
Action Type:	
[C-141] Remediation Closure Request C-141 (C-141-v-Closure)	

**QUESTIONS**

<b>Site Characterization</b>	
<i>Please answer all the questions in this group (only required when seeking remediation plan approval and beyond). This information must be provided to the appropriate district office no later than 90 days after the release discovery date.</i>	
What is the shallowest depth to groundwater beneath the area affected by the release in feet below ground surface (ft bgs)	Between 51 and 75 (ft.)
What method was used to determine the depth to ground water	NM OSE iWaters Database Search
Did this release impact groundwater or surface water	No
<b>What is the minimum distance, between the closest lateral extents of the release and the following surface areas:</b>	
A continuously flowing watercourse or any other significant watercourse	Between 500 and 1000 (ft.)
Any lakebed, sinkhole, or playa lake (measured from the ordinary high-water mark)	Greater than 5 (mi.)
An occupied permanent residence, school, hospital, institution, or church	Greater than 5 (mi.)
A spring or a private domestic fresh water well used by less than five households for domestic or stock watering purposes	Greater than 5 (mi.)
Any other fresh water well or spring	Greater than 5 (mi.)
Incorporated municipal boundaries or a defined municipal fresh water well field	Greater than 5 (mi.)
A wetland	Between ½ and 1 (mi.)
A subsurface mine	Greater than 5 (mi.)
An (non-karst) unstable area	Greater than 5 (mi.)
Categorize the risk of this well / site being in a karst geology	Low
A 100-year floodplain	Greater than 5 (mi.)
Did the release impact areas not on an exploration, development, production, or storage site	No

<b>Remediation Plan</b>	
<i>Please answer all the questions that apply or are indicated. This information must be provided to the appropriate district office no later than 90 days after the release discovery date.</i>	
Requesting a remediation plan approval with this submission	Yes
<i>Attach a comprehensive report demonstrating the lateral and vertical extents of soil contamination associated with the release have been determined, pursuant to 19.15.29.11 NMAC and 19.15.29.13 NMAC.</i>	
Have the lateral and vertical extents of contamination been fully delineated	Yes
Was this release entirely contained within a lined containment area	Yes
<i>Per Subsection B of 19.15.29.11 NMAC unless the site characterization report includes completed efforts at remediation, the report must include a proposed remediation plan in accordance with 19.15.29.12 NMAC, which includes the anticipated timelines for beginning and completing the remediation.</i>	
On what estimated date will the remediation commence	11/10/2025
On what date will (or did) the final sampling or liner inspection occur	11/10/2025
On what date will (or was) the remediation complete(d)	11/10/2025
What is the estimated surface area (in square feet) that will be remediated	7173
What is the estimated volume (in cubic yards) that will be remediated	0
<i>These estimated dates and measurements are recognized to be the best guess or calculation at the time of submission and may (be) change(d) over time as more remediation efforts are completed.</i>	
<i>The OCD recognizes that proposed remediation measures may have to be minimally adjusted in accordance with the physical realities encountered during remediation. If the responsible party has any need to significantly deviate from the remediation plan proposed, then it should consult with the division to determine if another remediation plan submission is required.</i>	

Sante Fe Main Office  
Phone: (505) 476-3441

General Information  
Phone: (505) 629-6116

Online Phone Directory  
<https://www.emnrd.nm.gov/ocd/contact-us>

**State of New Mexico**  
**Energy, Minerals and Natural Resources**  
**Oil Conservation Division**  
**1220 S. St Francis Dr.**  
**Santa Fe, NM 87505**

QUESTIONS, Page 4

Action 528519

**QUESTIONS (continued)**

Operator: COG OPERATING LLC 600 W Illinois Ave Midland, TX 79701	OGRID: 229137
	Action Number: 528519
	Action Type: [C-141] Remediation Closure Request C-141 (C-141-v-Closure)

**QUESTIONS**

<b>Remediation Plan (continued)</b>	
<i>Please answer all the questions that apply or are indicated. This information must be provided to the appropriate district office no later than 90 days after the release discovery date.</i>	
<b>This remediation will (or is expected to) utilize the following processes to remediate / reduce contaminants:</b>	
<i>(Select all answers below that apply.)</i>	
Is (or was) there affected material present needing to be removed	Yes
Is (or was) there a power wash of the lined containment area (to be) performed	Yes
OTHER (Non-listed remedial process)	No
<i>Per Subsection B of 19.15.29.11 NMAC unless the site characterization report includes completed efforts at remediation, the report must include a proposed remediation plan in accordance with 19.15.29.12 NMAC, which includes the anticipated timelines for beginning and completing the remediation.</i>	
I hereby certify that the information given above is true and complete to the best of my knowledge and understand that pursuant to OCD rules and regulations all operators are required to report and/or file certain release notifications and perform corrective actions for releases which may endanger public health or the environment. The acceptance of a C-141 report by the OCD does not relieve the operator of liability should their operations have failed to adequately investigate and remediate contamination that pose a threat to groundwater, surface water, human health or the environment. In addition, OCD acceptance of a C-141 report does not relieve the operator of responsibility for compliance with any other federal, state, or local laws and/or regulations.	
I hereby agree and sign off to the above statement	Name: Jacob Laird Title: Environmental Engineer Email: <a href="mailto:jacob.laird@conocophillips.com">jacob.laird@conocophillips.com</a> Date: 11/20/2025
<i>The OCD recognizes that proposed remediation measures may have to be minimally adjusted in accordance with the physical realities encountered during remediation. If the responsible party has any need to significantly deviate from the remediation plan proposed, then it should consult with the division to determine if another remediation plan submission is required.</i>	

Sante Fe Main Office  
Phone: (505) 476-3441

General Information  
Phone: (505) 629-6116

Online Phone Directory  
<https://www.emnrd.nm.gov/ocd/contact-us>

**State of New Mexico**  
**Energy, Minerals and Natural Resources**  
**Oil Conservation Division**  
**1220 S. St Francis Dr.**  
**Santa Fe, NM 87505**

QUESTIONS, Page 6

Action 528519

**QUESTIONS (continued)**

Operator: COG OPERATING LLC 600 W Illinois Ave Midland, TX 79701	OGRID: 229137
	Action Number: 528519
	Action Type: [C-141] Remediation Closure Request C-141 (C-141-v-Closure)

**QUESTIONS**

<b>Liner Inspection Information</b>	
Last liner inspection notification (C-141L) recorded	523468
Liner inspection date pursuant to Subparagraph (a) of Paragraph (5) of Subsection A of 19.15.29.11 NMAC	11/10/2025
Was all the impacted materials removed from the liner	Yes
What was the liner inspection surface area in square feet	7173

<b>Remediation Closure Request</b>	
<i>Only answer the questions in this group if seeking remediation closure for this release because all remediation steps have been completed.</i>	
Requesting a remediation closure approval with this submission	Yes
Have the lateral and vertical extents of contamination been fully delineated	Yes
Was this release entirely contained within a lined containment area	Yes
What was the total surface area (in square feet) remediated	7173
What was the total volume (cubic yards) remediated	0
Summarize any additional remediation activities not included by answers (above)	NA
<i>The responsible party must attach information demonstrating they have complied with all applicable closure requirements and any conditions or directives of the OCD. This demonstration should be in the form of a comprehensive report (in .pdf format) including a scaled site map, sampling diagrams, relevant field notes, photographs of any excavation prior to backfilling, laboratory data including chain of custody documents of final sampling, and a narrative of the remedial activities. Refer to 19.15.29.12 NMAC.</i>	
I hereby certify that the information given above is true and complete to the best of my knowledge and understand that pursuant to OCD rules and regulations all operators are required to report and/or file certain release notifications and perform corrective actions for releases which may endanger public health or the environment. The acceptance of a C-141 report by the OCD does not relieve the operator of liability should their operations have failed to adequately investigate and remediate contamination that pose a threat to groundwater, surface water, human health or the environment. In addition, OCD acceptance of a C-141 report does not relieve the operator of responsibility for compliance with any other federal, state, or local laws and/or regulations. The responsible party acknowledges they must substantially restore, reclaim, and re-vegetate the impacted surface area to the conditions that existed prior to the release or their final land use in accordance with 19.15.29.13 NMAC including notification to the OCD when reclamation and re-vegetation are complete.	
I hereby agree and sign off to the above statement	Name: Jacob Laird Title: Environmental Engineer Email: jacob.laird@conocophillips.com Date: 11/20/2025



Sante Fe Main Office  
Phone: (505) 476-3441

General Information  
Phone: (505) 629-6116

Online Phone Directory  
<https://www.emnrd.nm.gov/ocd/contact-us>

State of New Mexico  
Energy, Minerals and Natural Resources  
Oil Conservation Division  
1220 S. St Francis Dr.  
Santa Fe, NM 87505

CONDITIONS

Action 528519

CONDITIONS

Operator: COG OPERATING LLC 600 W Illinois Ave Midland, TX 79701	OGRID: 229137
	Action Number: 528519
	Action Type: [C-141] Remediation Closure Request C-141 (C-141-v-Closure)

CONDITIONS

Created By	Condition	Condition Date
scott.rodgers	App ID 528519 Liner Inspection approved	1/9/2026