



November 10, 2025

District Supervisor
Oil Conservation Division, District 1
1625 North French Drive
Hobbs, New Mexico 88240

**Re: Release Characterization and Closure Request
Chevron Asset Retirement
State 4 27 #009 Flowline Release
Unit Letter J, Section 27, Township 17 South, Range 35 East
Lea County, New Mexico
Incident ID# nDEV4210**

Sir or Madam:

Tetra Tech, Inc. (Tetra Tech) was contacted by Chevron Asset Retirement (AR) to assess a historical production flowline release associated with a well identified as the "State 4 27". The release presumably occurred in Public Land Survey System (PLSS) Unit Letter J, Section 27, Township 17 South, and Range 35 East, in Lea County, New Mexico (Site) based on the minimal detail found in Incident Events.

The former (now plugged) State 4 27 #009 injection well (API No. 30-025-20879) was identified as the most likely release location based on the available incident details and the section, township, and range provided in the incident description. The reclaimed well pad site is located at coordinates 32.8031311°, -103.4422302°, as shown on Figures 1 and 2.

BACKGROUND

According to the OCD permitting website, the release was discovered on October 11, 1988. The incident report states that 10 barrels (bbls) of produced water were released from a production flowline as a result of equipment failure, with no fluids recovered. The incident is labeled with a severity of "Minor". The incident status is currently listed as "*Closure Not Approved, Pending submission of C-141 from the operator*". The only incident event details available were "STATE 4 -27 27 17 35". A copy of the OCD incident details is included as Appendix A.

DESKTOP INCIDENT SUMMARY

Minimal information was obtained from the OCD permitting website as there was no C-141 and no incident location except for the PLSS section, township, and range in the incident event notes. There was no information regarding the release besides the source being a production flowline release. The incident details indicate that the release was associated with a State 4 - 27 well in Section 27, Township 17 South, and Range 35 East. A copy of the OCD incident details is included in Appendix A.

Tetra Tech was able to identify the former State 4 27 #009 well (API # 30-025-20879) by conducting a thorough search with the provided ULSTR location and the name listed in the event details. From aerial imagery Tetra Tech was able to corroborate the location of the State 4 27 #009 well at approximate coordinates 32.8031311°, -103.4422302°. The well records report that this injection well was active from 1964 until 1999, which corroborates with the release date. The listed operator was Chevron USA, Inc. The

Tetra Tech

901 West Wall St., Suite 100, Midland, TX 79701

Tel 432.682.4559 Fax 432.682.3946 www.tetrattech.com

well was plugged on December 5, 1999, and the current well status is “*Plugged, Site Released*”. A copy of the OCD well details is included in Appendix A.

LAND OWNERSHIP

According to the NMOCD Oil and Gas Map, the Site is located on state lands managed by the New Mexico State Land Office (SLO). The Site is located in an active oil and gas lease B018400003.

SITE CHARACTERIZATION

A site characterization was performed and no sinkholes, playa lakes, residences, schools, hospitals, institutions, churches, springs, private domestic water wells, stream bodies, wetlands, incorporated municipal boundaries, subsurface mines, or floodplains are located within the distances specified in 19.15.29 NMAC. The Site is in an area of low karst potential.

According to the New Mexico Office of the State Engineers (NMOSE) reporting system, there are seven (7) water wells within an 800-meter (approximately 1/2-mile) radius of the Site, including three (3) wells with water level data that is less than 25 years old. According to the available data, the average depth to water at the Site is 70 feet below ground surface (bgs). The site characterization is included in Appendix B.

REGULATORY FRAMEWORK

Based on the site characterization and in accordance with Table I of 19.15.29.12 NMAC, the RRALs for the Site are as follows:

Constituent	Site RRALs
Chloride	10,000 mg/kg
TPH (GRO+DRO+ORO)	2,500 mg/kg
TPH (GRO+DRO)	1,000 mg/kg
BTEX	50 mg/kg
Benzene	10 mg/kg

In accordance with the NMOCD guidance Procedures for Implementation of the Spill Rule (19.15.29 NMAC) (September 6, 2019), the following reclamation requirements for surface soils (0-4 ft bgs) outside of active oil and gas operations are as follows:

Constituent	Reclamation Requirements
Chloride	600 mg/kg
TPH	100 mg/kg
BTEX	50 mg/kg
Benzene	10 mg/kg

SITE VISIT SUMMARY

At the request of Chevron, Tetra Tech personnel conducted a visual Site field inspection on March 19, 2025, at the release area to evaluate current conditions at the Site. Photographic documentation from the visual assessment is included as Appendix C. Figure 3 presents the identified release location and Site features.

A list of observations made during the records review and visual Site inspection follow:

- No release footprint was identified.
- No staining was noted in the former approximate pad area.

- The previous pad and associated lease road areas were observed to contain uniform vegetative cover that reflects a life-form ratio of plus or minus fifty percent of pre-disturbance levels.
- A decommissioned subsurface steel flowline was observed immediately adjacent to the reclaimed pad area.
- Site features include the well marker and a buried pipeline.

SITE ASSESSMENT AND SAMPLING RESULTS

Tetra Tech conducted sampling at the Site on behalf of Chevron in order to evaluate the current conditions in surface soils. On March 27, 2025, Tetra Tech installed four (4) hand auger borings (SS-1 through SS-4) to 0.5-foot bgs in areas within the former pad area, as shown on Figure 3. No visible evidence of a release was observed during the 2025 sampling event. Photographic documentation of the Site is presented in Appendix C.

A total of four (4) soil samples were collected from the four hand-auger borings and submitted to Cardinal Laboratories in Hobbs, New Mexico to be analyzed for chloride via Method SM4500, TPH via EPA Method 8015M, and BTEX via EPA Method 8261B. A copy of the laboratory analytical report and chain-of-custody documentation are included in Appendix D.

Analytical results from the 2025 sampling activities are summarized in Table 1. All analytical results were below the most stringent closure criteria for soils as defined by 19.15.29 NMAC.

REVEGETATION

Based on 19.15.29.13 NMAC, revegetation is complete, and no further restoration is required. All disturbed areas have uniform vegetative cover native to the area. Based on sampling results, non-waste containing, uncontaminated, earthen material with chloride concentrations less than 600 mg/kg as analyzed by EPA Method 300.0 is located in the former release area. Photographic documentation of the former release area is presented in Appendix C.

CONCLUSION

All analytical results associated with 2025 sampling results were below Site RRALs; therefore, no remediation of the former pad footprint is necessary. Based on the above, Chevron respectfully requests closure for this release. Final reclamation and revegetation have been completed in accordance with 19.15.29.13 NMAC. If you have any questions concerning the soil assessment activities for the Site, please call me at (512) 596-8201.

Sincerely,
Tetra Tech, Inc.



Samantha Abbott, P.G.
Senior Project Manager



Lisbeth Chavira
Project Manager

cc:
Mr. Joe Tyler – Chevron MCBU

LIST OF ATTACHMENTS

Figures:

- Figure 1 – Overview Map
- Figure 2 – Topographic Map
- Figure 3 – Historical Incident Area and Site Assessment

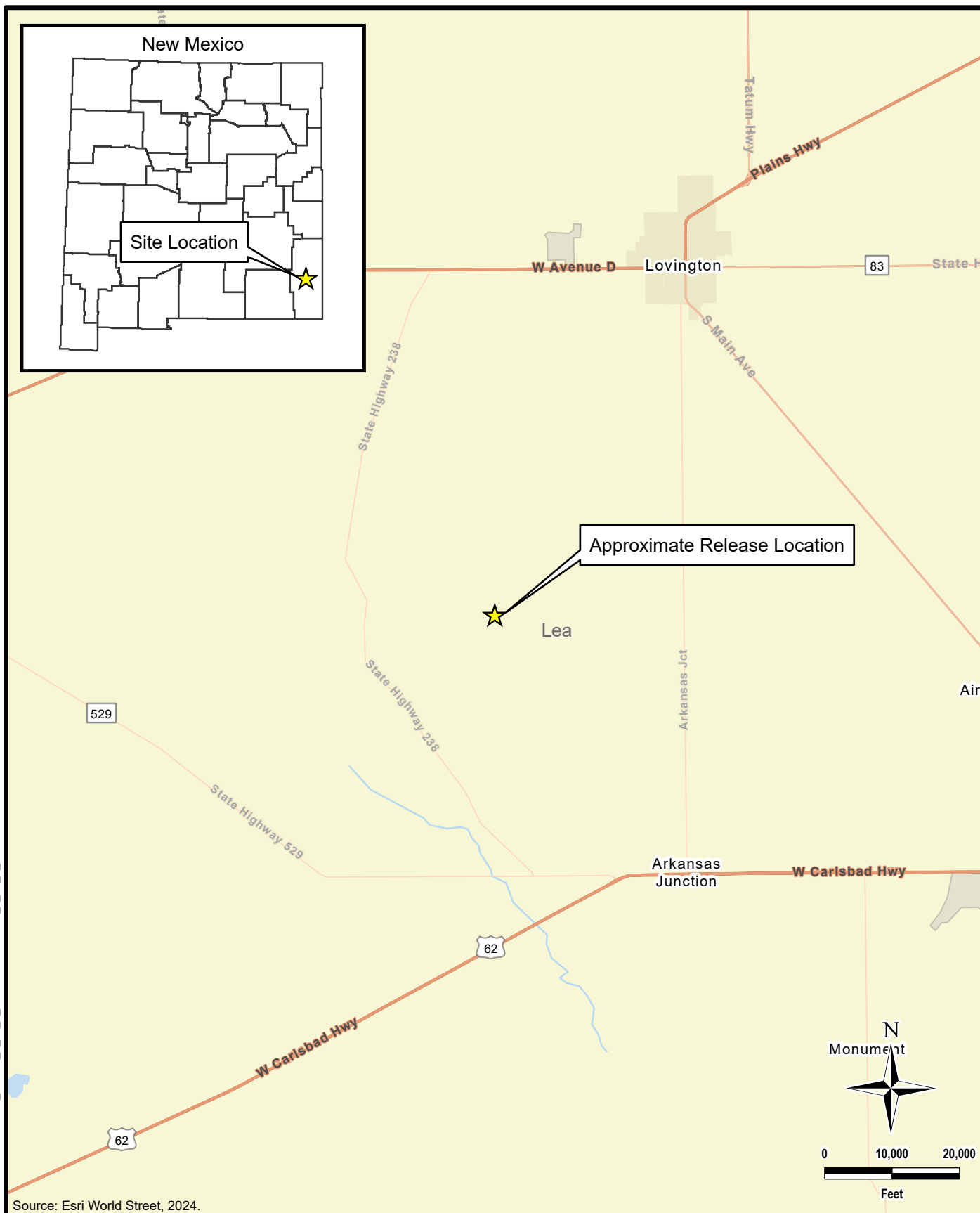
Tables:

- Table 1 – Summary of Analytical Results – 2025 Soil Assessment

Appendices:


- Appendix A – OCD Incident and Well Files
- Appendix B – Site Characterization Data
- Appendix C – Photographic Documentation
- Appendix D – Laboratory Analytical Data

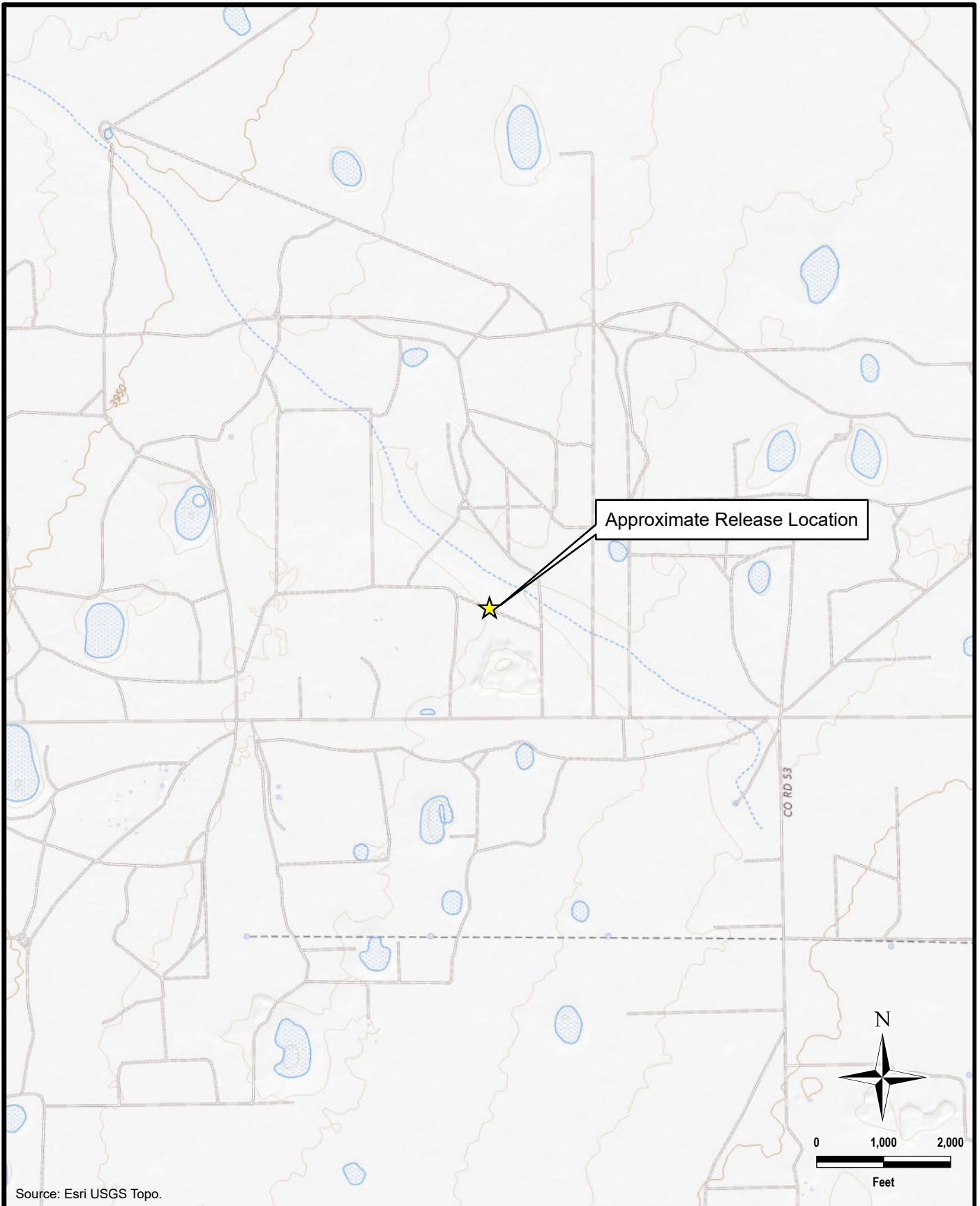
FIGURES



Source: Esri World Street, 2024.

DOCUMENT PATH: Y:\CHEVRON\212C-MD-03824_STATE_4_27_9_FLOWLINE\STATE_4_27_9_FLOWLINE.APRX

 TETRA TECH www.tetrattech.com 901 West Wall Street, Suite 100 Midland, Texas 79701 Phone: (432) 682-4559 Fax: (432) 682-3946	CHEVRON MID CONTINENT BUSINESS UNIT NDEV4210 (32.8031311°, -103.4422302°) LEA COUNTY, NEW MEXICO		PROJECT NO.: 212C-MD-03824
	STATE 4 27 #009 FLOWLINE RELEASE OVERVIEW MAP		DATE: JUNE 23, 2025
			DESIGNED BY: LMV
			Figure No. 1



Source: Esri USGS Topo.

DOCUMENT PATH: Y:\CHEVRON\212C-MD-03824_STATE_4_27_9_FLOWLINE\STATE_4_27_9_FLOWLINE.APRX



www.tetrattech.com
 901 West Wall Street, Suite 100
 Midland, Texas 79701
 Phone: (432) 682-4559
 Fax: (432) 682-3946

CHEVRON MID CONTINENT BUSINESS UNIT

NDEV4210
 (32.8031311°, -103.4422302°)
 LEA COUNTY, NEW MEXICO

**STATE 4 27 #009 FLOWLINE RELEASE
 TOPOGRAPHIC MAP**

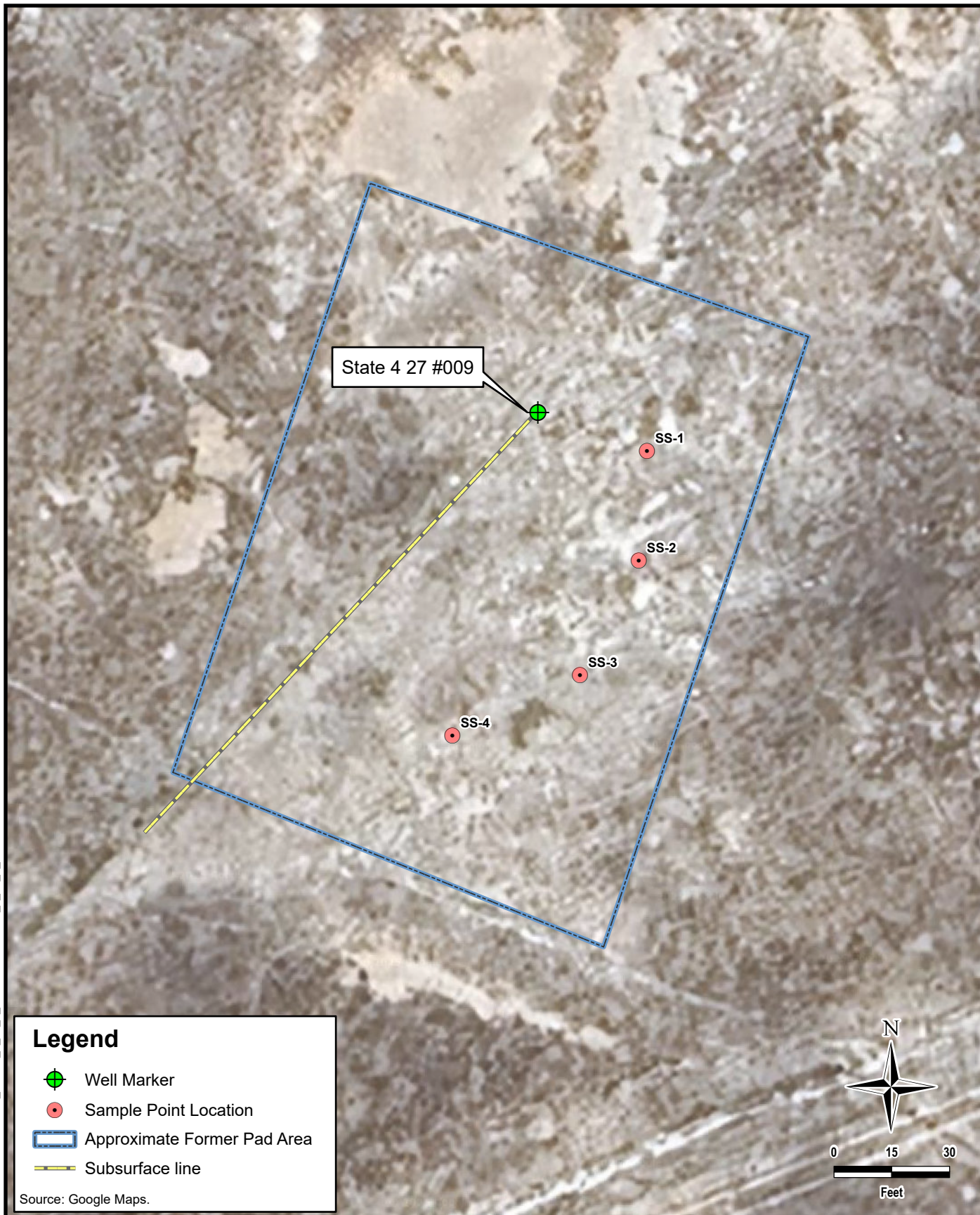
PROJECT NO.: 212C-MD-03824

DATE: JUNE 23, 2025

DESIGNED BY: LMV

Figure No.

2



DOCUMENT PATH: Y:\CHEVRON\212C-MD-03824_STATE_4_27_9_FLOWLINE\STATE_4_27_9_FLOWLINE.APRX

Legend

- Well Marker
- Sample Point Location
- Approximate Former Pad Area
- Subsurface line

Source: Google Maps.

<p>TETRA TECH</p> <p>www.tetrattech.com</p> <p>901 West Wall Street, Suite 100 Midland, Texas 79701 Phone: (432) 682-4559 Fax: (432) 682-3946</p>	<p>CHEVRON MID CONTINENT BUSINESS UNIT</p> <p>NDEV4210 (32.8031311°, -103.4422302°) LEA COUNTY, NEW MEXICO</p>	<p>PROJECT NO.: 212C-MD-03824</p> <p>DATE: JULY 31, 2025</p> <p>DESIGNED BY: LMV</p>
	<p>STATE 4 27 #009 FLOWLINE RELEASE HISTORICAL INCIDENT AREA AND ASSESSMENT</p>	
		<p>Figure No. 3</p>

TABLES

TABLE 1
 SUMMARY OF ANALYTICAL RESULTS
 SOIL ASSESSMENT- nDEV4210
 CHEVRON MCBU
 STATE 4 27 #009 FLOWLINE RELEASE
 LEA COUNTY, NM

Sample ID	Sample Date	Sample Depth	Chloride ¹		BTEX ²								TPH ³								
					Benzene		Toluene		Ethylbenzene		Total Xylenes		Total BTEX		GRO		DRO		EXT DRO		Total TPH (GRO+DRO+EXT DRO)
					mg/kg	Q	mg/kg	Q	mg/kg	Q	mg/kg	Q	mg/kg	Q	mg/kg	Q	mg/kg	Q	mg/kg	Q	
SS-1	3/27/2025	0-1	240		<0.050		<0.050		<0.050		<0.150		<0.300		<10.0		14.4		<10.0		14.4
SS-2	3/27/2025	0-1	80.0		<0.050		<0.050		<0.050		<0.150		<0.300		<10.0		<10.0		<10.0		-
SS-3	3/27/2025	0-1	48.0		<0.050		<0.050		<0.050		<0.150		<0.300		<10.0		<10.0		<10.0		-
SS-4	3/27/2025	0-1	96.0		<0.050		<0.050		<0.050		<0.150		<0.300		<10.0		<10.0		<10.0		-

NOTES:

- ft. Feet
- bgs Below ground surface
- mg/kg Milligrams per kilogram
- TPH Total Petroleum Hydrocarbons
- GRO Gasoline range organics
- DRO Diesel range organics
- 1 Method SM4500Cl-B
- 2 Method 8021B
- 3 Method 8015M

APPENDIX A

OCD Incident and Well Files

OCD Permitting

Home Searches Incidents Incident Details

NDEV4210 1988 MINOR A INIT @ 0

General Incident Information

Site Name:
 Well:
 Facility:
 Operator: [\[4323\]](#) CHEVRON U S A INC
 Status: Closure Not Approved, Pending submission of C-141 from the operator
 Type: **Severity:** Minor
Surface Owner:
 District: Hobbs **County:** Lea (25)
 Incident Location: -27-17S-35E 0 FL 0 FL
 Lat/Long:
 Directions:

- Quic
- [Gene](#)
- [Mater](#)
- [Event](#)
- [Order](#)
- [Actio](#)
- Assoc
- Incide
- New
- [New I](#)
- [New I](#)
- [New \(](#)
- [New !](#)
- [New](#)
- [New](#)
- [New \](#)

Notes

Source of Referral: Industry Rep **Action / Escalation:** Referred to Environmental Inspector

Resulted In Fire: **Resulted In Injury:**

Endangered Public Health: **Will or Has Reached Watercourse:**

Fresh Water Contamination: **Property Or Environmental Damage:**

Contact Details

Contact Name: Contact Title:

Event Dates

Date of Discovery: 10/11/1988 **Initial C-141 Report Due:** 10/26/1988

Remediation Closure Report Due: 11/13/2018

Incident Dates

Type	Action	Received	Denied	Approved
Remediation Closure Report Extension		08/15/2018		08/15/2018

Compositional Analysis of Vented and/or Flared Natural Gas

No Compositional Analysis Found

Incident Materials

Searches

Operator Data

Hearing Fee Application

Equipment Failure	Flow Line - Production	Produced Water	<input type="checkbox"/>	2	0	2	BBL
The concentration of dissolved chloride in the produced water >10,000 mg/l: <input type="checkbox"/> Yes <input checked="" type="checkbox"/> No							

Incident Events

Date	Detail
	STATE 4 -27 27 17 35

Incident Severity

Major release as defined by 19.15.29.7(A) NMAC?

Yes No

Incident Corrective Actions

- No initial response data was found for this incident.
- No site characterization data was found for this incident.
- No remediation plan data was found for this incident.
- No active remediation deferral request was found for this incident.
- No remediation closure report data was found for this incident.
- No reclamation report data was found for this incident.
- No re-vegetation report data was found for this incident.

Orders

No Orders Found

OCD Permitting

Home Searches Wells Well Details

30-025-20879 STATE 4 27 #009 [2727]

General Well Information

Operator:	[4323] CHEVRON U S A INC	Direction:	Vertical
Status:	Plugged, Site Released	Multi-Lateral:	No
Well Type:	Injection	Mineral Owner:	State
Work Type:	Plugback	Surface Owner:	State
Surface Location:	J-27-17S-35E 1650 FSL 1650 FEL	Sing/Mult Compl:	Single
Lat/Long:	32.8031311,-103.4422302 NAD83	Potash Waiver:	False
GL Elevation:	3927		
KB Elevation:			
DF Elevation:			

Proposed Formation and/or Notes

PLUGGED & ABANDONED

Depths

Proposed:	9060	True Vertical Depth:	9060
Measured Vertical Depth:	9060	Plugback Measured:	0

Formation Tops

Formation	Top	Producing	Method Obtained
-----------	-----	-----------	-----------------

Event Dates

Initial APD Approval:	01/01/1900	Current APD Expiration:	03/16/1997
Most Recent APD Approval:	12/05/1999	Gas Capture Plan Received:	
APD Cancellation:		TA Expiration:	
APD Extension Approval:		PNR Expiration:	
Spud:	01/29/1964	Last MIT/BHT:	12/05/1995
Approved Temporary Abandonment:			
Shut In:			
Plug and Abandoned Intent Received:			
Well Plugged:	12/05/1999		
Site Release:			
Last Inspection:	02/17/2005		

History

Effective Date	Property	Well Number	Operator	C-101 Work Type	Well Type	Well Status	Apd Cancelled	Plug Date
12/05/1999	[2727] STATE 4 27	#009	[4323] CHEVRON U S A INC	Plugback	Injection	Plugged, Site Released		12/05/1999
03/16/1995	[2727] STATE 4 27	#009	[4323] CHEVRON U S A INC	Plugback	Injection	Zones Permanently Plugged		

- Quic
- [Gene](#)
- [Histor](#)
- [Comr](#)
- [Oper](#)
- [Pits](#)
- [Casin](#)
- [Well \(](#)
- [Finan](#)
- [Comr](#)
- [Order](#)
- [Prod](#)
- [Trans](#)
- [Point](#)
- [Actior](#)
- Assoc
- [Well f](#)
- [Well l](#)
- [Well /](#)
- New
- [New f](#)
- [New l](#)
- [New \(](#)
- [New \(](#)
- [New \(](#)
- [New \(](#)
- [New \(](#)

Searches Operator Data Hearing Fee Application

01/01/1900	[9152] VACUUM ABO UNIT	#009	[17643] PHILLIPS PETROLEUM CO	New	Injection	Active		
------------	------------------------	------	-------------------------------	-----	-----------	--------	--	--

Comments

PLUGGING WORK PERFORMED ON 08/03/1999 SITE RELEASED BY JOHNNY ROBINSON--OIL & GAS INSPECTOR 12/05/1999 CT
 Added on 01/11/2000 by ogoclt

PLUGGING WORK PERFORMED 08/03/99. SITE RELEASED BY JOHNNY ROBINSON- OIL & GAS INSPECTOR ON 12/05/1999. CT
 Added on 01/11/2000 by ogoclt

Pits

No Pits Found

Casing

String/Hole Type	Taper	Date Set	Boreholes, Strings and Equipment Specifications			Specifications for Strings and Tubing			Strings Cemented and Intervals			Cement and Plug Description		
			Diameter	Top	Bottom (Depth)	Grade	Length	Weight	Bot of Cem	Top of Cem	Meth	Class of Cement	Sacks	Pressure Test (Y/N)
Hole 1	1		13.375	0	355		0	0.0	0	0			0	No
Surface Casing	1		13.375	0	355		355	48.0	355	0		Class C Cement	400	No
Hole 2	1		9.625	0	3314		0	0.0	0	0			0	No
Intermediate 1 Casing	1		9.625	0	3314		3314	36.0	3314	0		Class C Cement	600	No
Hole 4	1		7.000	0	9058		0	0.0	0	0			0	No
Production Casing	1		7.000	0	9058		9058	26.0	9058	0		Class C Cement	500	No

Well Completions

[61780] VACUUM; ABO REEF

Status: Zone Permanently Plugged Last Produced: 03/01/1995
 Bottomhole Location: J-27-17S-35E 1650 FSL 1650 FEL
 Lat/Long:
 Acreage:
 DHC: No Consolidation Code:
 Production Method: Pumping

Well Test Data

Production Test: Test Length: 0 hours
 Flowing Tubing Pressure: 0 psi Flowing Casing Pressure: 0 psi
 Choke Size: 0.000 inches Testing Method:

Searches Operator Data Hearing Fee Application

Date	Top Measured Depth (Where Completion Enters Formation)	Bottom Measured Depth (End of Lateral)	Top Vertical Depth	Bottom Vertical Depth
Notes				
Event Dates				
Initial Effective/Approval:	01/01/1900			
Most Recent Approval:	02/18/1999			
Confidential Requested On:			TA Expiration:	
Test Allowable Approval:			Confidential Until:	
TD Reached:			Test Allowable End:	
Deviation Report Received:	No		DHC:	
Directional Survey Run:	No		Rig Released:	
Directional Survey Received:	No		Logs Received:	No
First Oil Production:	01/01/1900		Closure Pit Plat Received:	
First Injection:			First Gas Production:	01/01/1900
Ready to Produce:			Completion Report Received:	
C-104 Approval:			New Well C-104 Approval:	
Plug Back:			Revoked Until:	
Authorization Revoked Start:				

Well Completion History

Effective Date	Property	Well Number	Operator	Completion Status	TA Expiration Date
02/18/1999	[2727] STATE 4 27	#009	[4323] CHEVRON U S A INC	Zone Permanently Plugged	
03/16/1995	[2727] STATE 4 27	#009	[4323] CHEVRON U S A INC	Zone Permanently Plugged	
01/25/1995	[2727] STATE 4 27	#009	[4323] CHEVRON U S A INC		
01/01/1900	[9152] VACUUM ABO UNIT	#009	[17643] PHILLIPS PETROLEUM CO	Active	

[96035] WILDCAT; GROUP 4

Status:	Zone Permanently Plugged	Last Produced:	05/01/1995
Bottomhole Location:	J-27-17S-35E 1650 FSL 1650 FEL		
Lat/Long:			
Acreage:			
DHC:	No	Consolidation Code:	
		Production Method:	Pumping

Well Test Data

Production Test:	03/24/1995	Test Length:	0 hours
Flowing Tubing Pressure:	40 psi	Flowing Casing Pressure:	0 psi
Choke Size:	0.000 inches	Testing Method:	
Gas Volume:	1.0 MCF	Oil Volume:	3.0 bbls
Gas-Oil Ratio:	0 Kcf / bbl	Oil Gravity:	0.0 Corr. API
Disposition of Gas:		Water Volume:	10.0 bbls

Perforations

Date	Top Measured Depth (Where Completion Enters Formation)	Bottom Measured Depth (End of Lateral)	Top Vertical Depth	Bottom Vertical Depth
	7440	7502	0	0

Searches Operator Data Hearing Fee Application

Confidential Requested On:

Test Allowable Approval:
 TD Reached:
 Deviation Report Received: No
 Directional Survey Run: No
 Directional Survey Received: No
 First Oil Production: 03/16/1995
 First Injection:
 Ready to Produce: 03/16/1995
 C-104 Approval: 05/22/1995
 Plug Back:
 Authorization Revoked Start:

Confidential Until:

Test Allowable End:
 DHC:
 Rig Released:
 Logs Received: No
 Closure Pit Plat Received:
 First Gas Production:
 Completion Report Received:
 New Well C-104 Approval:
 Revoked Until:

Well Completion History

Effective Date	Property	Well Number	Operator	Completion Status	TA Expiration Date
03/16/1995	[2727] STATE 4 27	#009	[4323] CHEVRON U S A INC	Zone Permanently Plugged	

[96246] VACUUM; DRINKARD, EAST

Status: Zone Permanently Plugged
 Bottomhole Location: J-27-17S-35E 1650 FSL 1650 FEL
 Lat/Long:
 Acreage:
 DHC: No

Last Produced:
 Consolidation Code:
 Production Method: Flowing

Well Test Data

Production Test:
 Flowing Tubing Pressure: 0 psi
 Choke Size: 0.000 inches
 Gas Volume: 0.0 MCF
 Gas-Oil Ratio: 0 Kcf / bbl
 Disposition of Gas:

Test Length: 0 hours
 Flowing Casing Pressure: 0 psi
 Testing Method:
 Oil Volume: 0.0 bbls
 Oil Gravity: 0.0 Corr. API
 Water Volume: 0.0 bbls

Perforations

Date	Top Measured Depth (Where Completion Enters Formation)	Bottom Measured Depth (End of Lateral)	Top Vertical Depth	Bottom Vertical Depth
------	--	---	--------------------	-----------------------

Notes

Event Dates

Initial Effective/Approval: 08/23/1995
 Most Recent Approval: 12/05/1999
 Confidential Requested On:
 Test Allowable Approval:
 TD Reached:
 Deviation Report Received: No
 Directional Survey Run: No
 Directional Survey Received: No
 First Oil Production:
 First Injection:
 Ready to Produce:
 C-104 Approval: 08/23/1995
 Plug Back:

TA Expiration:
 Confidential Until:
 Test Allowable End:
 DHC:
 Rig Released:
 Logs Received: No
 Closure Pit Plat Received:
 First Gas Production:
 Completion Report Received:
 New Well C-104 Approval:
 Revoked Until:

Searches Operator Data Hearing Fee Application

					Date
12/05/1999	[2727] STATE 4 27	#009	[4323] CHEVRON U S A INC	Zone Permanently Plugged	
08/23/1995	[2727] STATE 4 27	#009	[4323] CHEVRON U S A INC	Temporary Abandonment	

Financial Assurance

Please login to review the financial assurance associated with this well.

Compliance

Note that Financial Assurance and Inactive Well Compliance are documented in separate reports ([Inactive Well Report](#), [Financial Assurance Report](#)).

Also note that some compliance issues are addressed at the operator level so not listed under each well.

Orders

Please login to review the orders associated with this well.

Production / Injection

The production & injection volumes are sourced from monthly production reports (C-115) submissions.

Earliest Production in OCD Records: 12/1992 Last 5/1995 [Show All Production](#) [Export to Excel](#)

Time Frame	Production				Injection				Pressure
	Oil (BBLs)	Gas (MCF)	Water (BBLs)	Days P/I	Water (BBLs)	Co2 (MCF)	Gas (MCF)	Other	
1992 Cumulative	0	0	0	0	142,311	0	0	0	N/A
1993	0	0	0	0	13,813	0	0	0	N/A
1994	0	0	0	0	56,651	0	0	0	N/A
1995	293	6	4,246	96	18,332	0	0	0	N/A
1996	0	0	0	0	0	0	0	0	N/A
Grand Total:	293	6	4,246	96	231,107	0	0	0	N/A

Transporters

Transporter	Product	Most Recent for Property

Points of Disposition

ID	Type	Description	Pool(s)
9999998	Water	BOGUS LOCATION FOR WCMP REQUIRED POD'S	[61780] VACUUM;ABO REEF

[SIGN-IN](#) [HELP](#)

[Searches](#)

[Operator Data](#)

[Hearing Fee Application](#)

2814910	Oil	STATE 4-27 #9	[96035] WILDCAT;GROUP 4
---------	-----	---------------	-------------------------

New Mexico Energy, Minerals and Natural Resources Department | Copyright 2012
1220 South St. Francis Drive | Santa Fe, NM 87505 | P: (505) 476-3200 | F: (505) 476-3220

[EMNRD Home](#) [OCD Main Page](#) [OCD Rules](#) [Help](#)

APPENDIX B Site Characterization Data



New Mexico Office of the State Engineer

Water Column/Average Depth to Water

(A CLW##### in the POD suffix indicates the POD has been replaced & no longer serves a water right file.)

(R=POD has been replaced, O=orphaned, C=the file is closed)

(quarters are smallest to largest)

(meters)

(In feet)

POD Number	Code	Sub basin	County	Q64	Q16	Q4	Sec	Tws	Range	X	Y	Map	Distance	Well Depth	Depth Water	Water Column
L 05207		L	LE				27	17S	35E	645552.0	3630825.0 *	●	414	140	60	80
L 04859		L	LE	SE	SE	SE	27	17S	35E	646258.0	3630135.0 *	●	572	145	85	60
L 04829 S2		L	LE		SE	SW	27	17S	35E	645352.0	3630227.0 *	●	586	220	90	130
L 13479 POD3		L	LE	SE	SE	SW	27	17S	35E	645447.6	3630066.2	●	619	76	70	6
L 13479 POD1		L	LE	NE	NE	NW	34	17S	35E	645495.4	3630015.7	●	630	80	70	10
L 13479 POD2		L	LE	NE	NE	NW	34	17S	35E	645479.6	3629941.3	●	701	80	70	10
L 04881		L	LE		NW	SW	26	17S	35E	646556.0	3630644.0 *	●	713	137	50	87

Average Depth to Water: **70 feet**

Minimum Depth: **50 feet**

Maximum Depth: **90 feet**

Record Count: 7

Basin/County Search:

County: LE

UTM Filters (in meters):

Easting: 645850.18

Northing: 3630536.67

Radius: 800

* UTM location was derived from PLSS - see Help

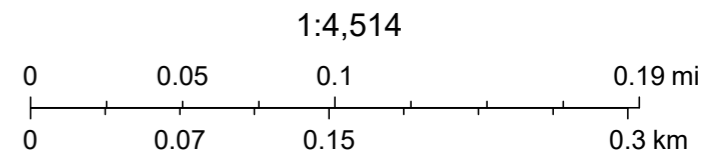
The data is furnished by the NMOSE/ISC and is accepted by the recipient with the expressed understanding that the OSE/ISC make no warranties, expressed or implied, concerning the accuracy, completeness, reliability, usability, or suitability for any particular purpose of the data.

USGS Wells



3/31/2025, 3:15:16 PM

▲ USGS Historical GW Wells



1:4,514

USGS, Esri, HERE, Garmin, IPC, Maxar

National Flood Hazard Layer FIRMette



103°26'51"W 32°48'26"N



Legend

SEE FIS REPORT FOR DETAILED LEGEND AND INDEX MAP FOR FIRM PANEL LAYOUT

SPECIAL FLOOD HAZARD AREAS		Without Base Flood Elevation (BFE) <i>Zone A, V, A99</i>
		With BFE or Depth <i>Zone AE, AO, AH, VE, AR</i>
		Regulatory Floodway

OTHER AREAS OF FLOOD HAZARD		0.2% Annual Chance Flood Hazard, Areas of 1% annual chance flood with average depth less than one foot or with drainage areas of less than one square mile <i>Zone X</i>
		Future Conditions 1% Annual Chance Flood Hazard <i>Zone X</i>
		Area with Reduced Flood Risk due to Levee. See Notes. <i>Zone X</i>
		Area with Flood Risk due to Levee <i>Zone D</i>

OTHER AREAS		NO SCREEN Area of Minimal Flood Hazard <i>Zone X</i>
		Effective LOMRs
		Area of Undetermined Flood Hazard <i>Zone D</i>

GENERAL STRUCTURES		Channel, Culvert, or Storm Sewer
		Levee, Dike, or Floodwall

OTHER FEATURES		Cross Sections with 1% Annual Chance Water Surface Elevation
		Coastal Transect
		Base Flood Elevation Line (BFE)
		Limit of Study
		Jurisdiction Boundary
		Coastal Transect Baseline

MAP PANELS		Digital Data Available
		No Digital Data Available
		Unmapped



The pin displayed on the map is an approximate point selected by the user and does not represent an authoritative property location.

This map complies with FEMA's standards for the use of digital flood maps if it is not void as described below. The basemap shown complies with FEMA's basemap accuracy standards

The flood hazard information is derived directly from the authoritative NFHL web services provided by FEMA. This map was exported on 3/31/2025 at 8:34 PM and does not reflect changes or amendments subsequent to this date and time. The NFHL and effective information may change or become superseded by new data over time.

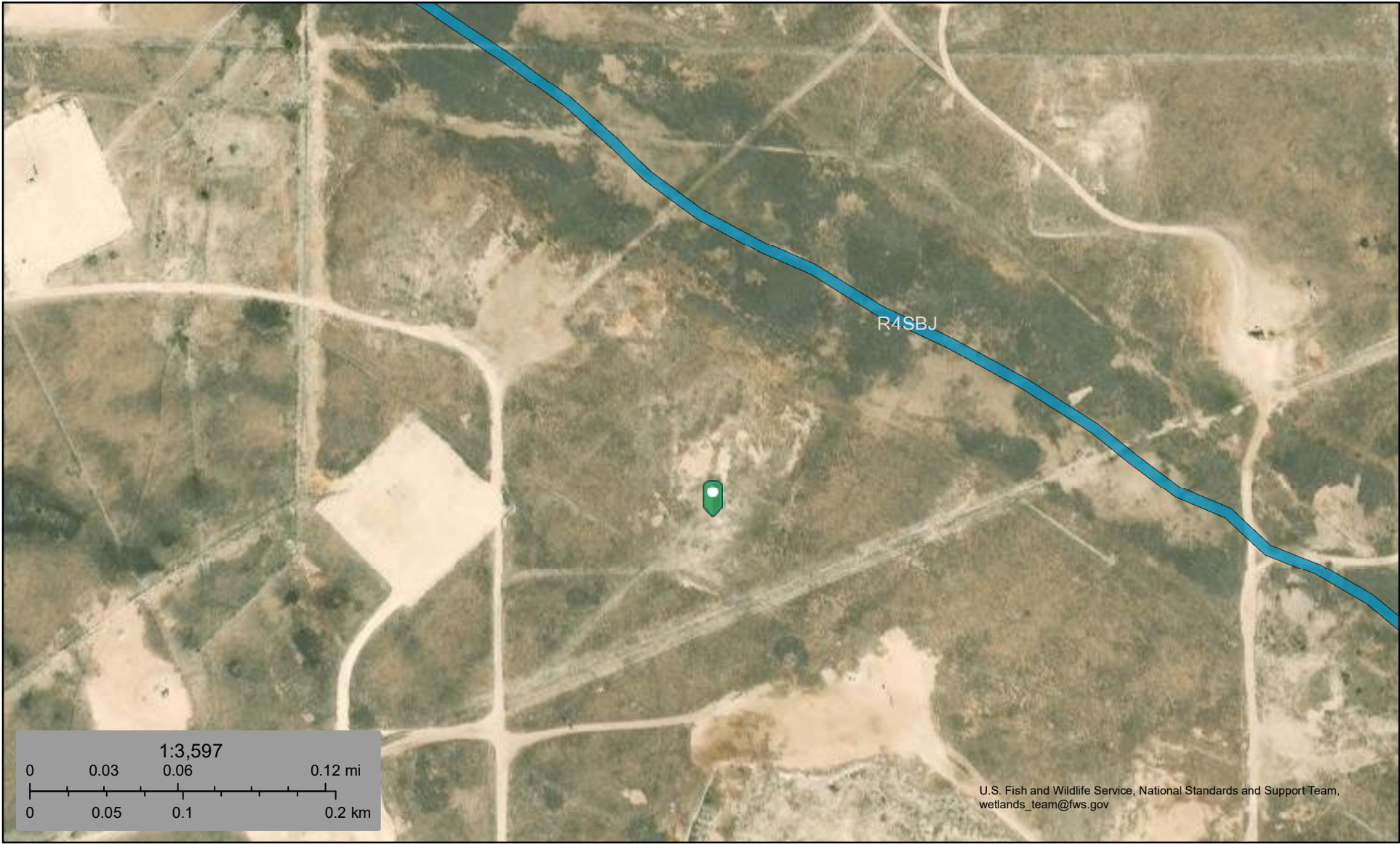
This map image is void if the one or more of the following map elements do not appear: basemap imagery, flood zone labels, legend, scale bar, map creation date, community identifiers, FIRM panel number, and FIRM effective date. Map images for unmapped and unmodernized areas cannot be used for regulatory purposes.

Released to Imaging: 4/14/2026 10:01:01 AM

1:6,000 Basemap Imagery Source: USGS National Map 2023



National Wetlands Inventory



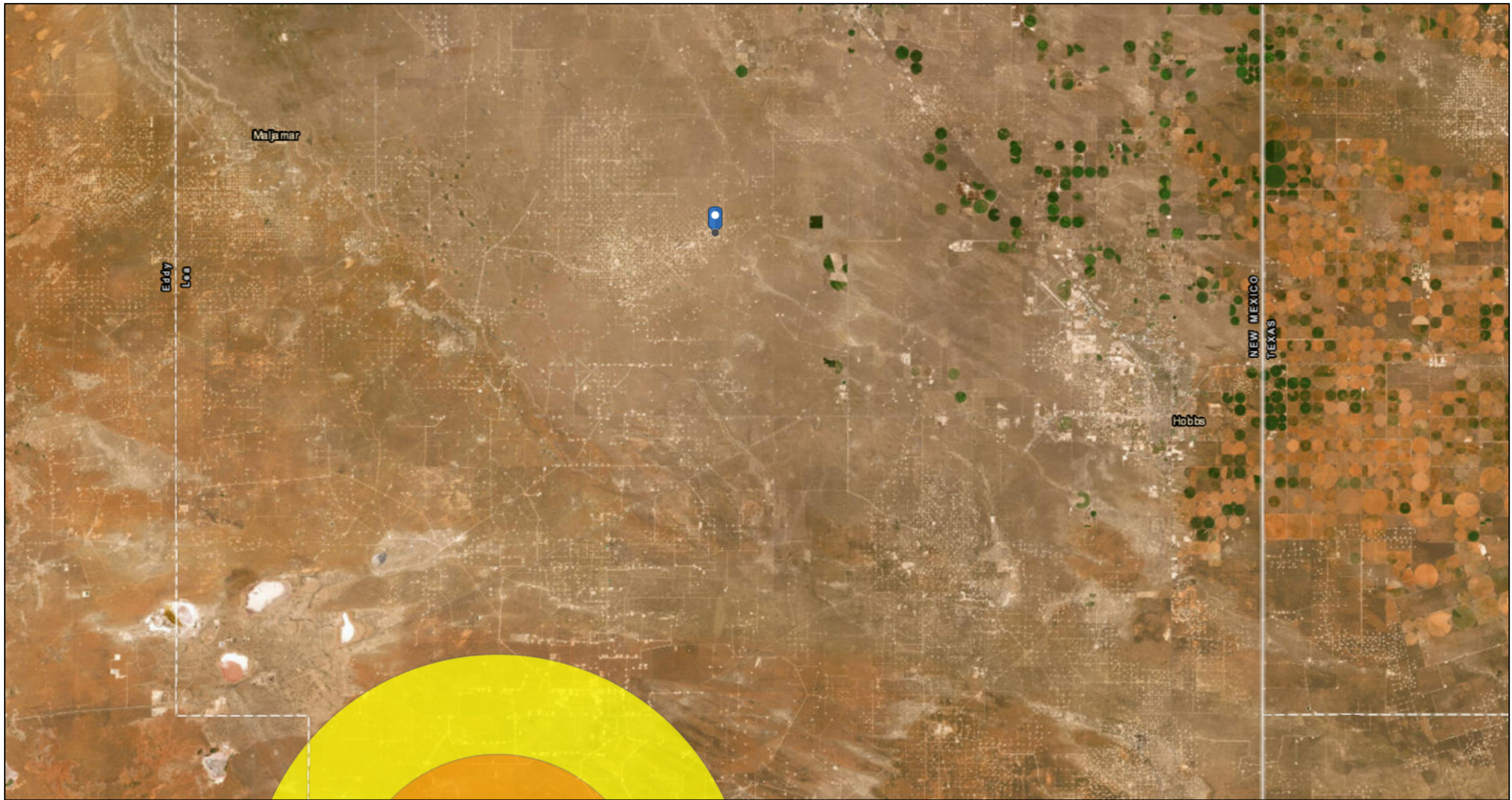
March 31, 2025

Wetlands

- Estuarine and Marine Deepwater
- Freshwater Emergent Wetland
- Lake
- Estuarine and Marine Wetland
- Freshwater Forested/Shrub Wetland
- Other
- Freshwater Pond
- Riverine

This map is for general reference only. The US Fish and Wildlife Service is not responsible for the accuracy or currentness of the base data shown on this map. All wetlands related data should be used in accordance with the layer metadata found on the Wetlands Mapper web site.

OCD Induced Seismicity



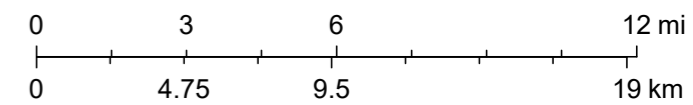
3/31/2025, 3:21:48 PM

Seismic Response 3.0 to 3.4

6 mi.

10 mi.

1:288,895



Oil Conservation Division (OCD), Energy, Minerals and Natural Resources Department (EMNRD), Esri, HERE, Garmin, Earthstar Geographics

OCD Karst Potential

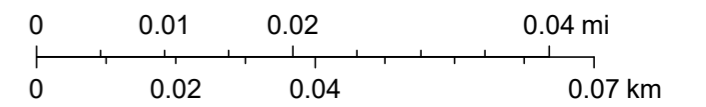


3/31/2025, 3:13:55 PM

Karst Occurrence Potential

 Low

1:1,128



BLM, OCD, New Mexico Tech, Maxar, Microsoft, Esri, HERE, Garmin, iPC

OCD Land Ownership



3/31/2025, 3:12:22 PM

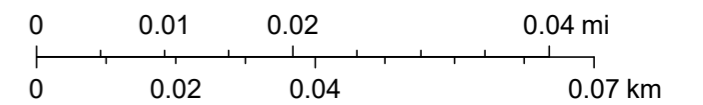
Land Ownership

S

Mineral Ownership

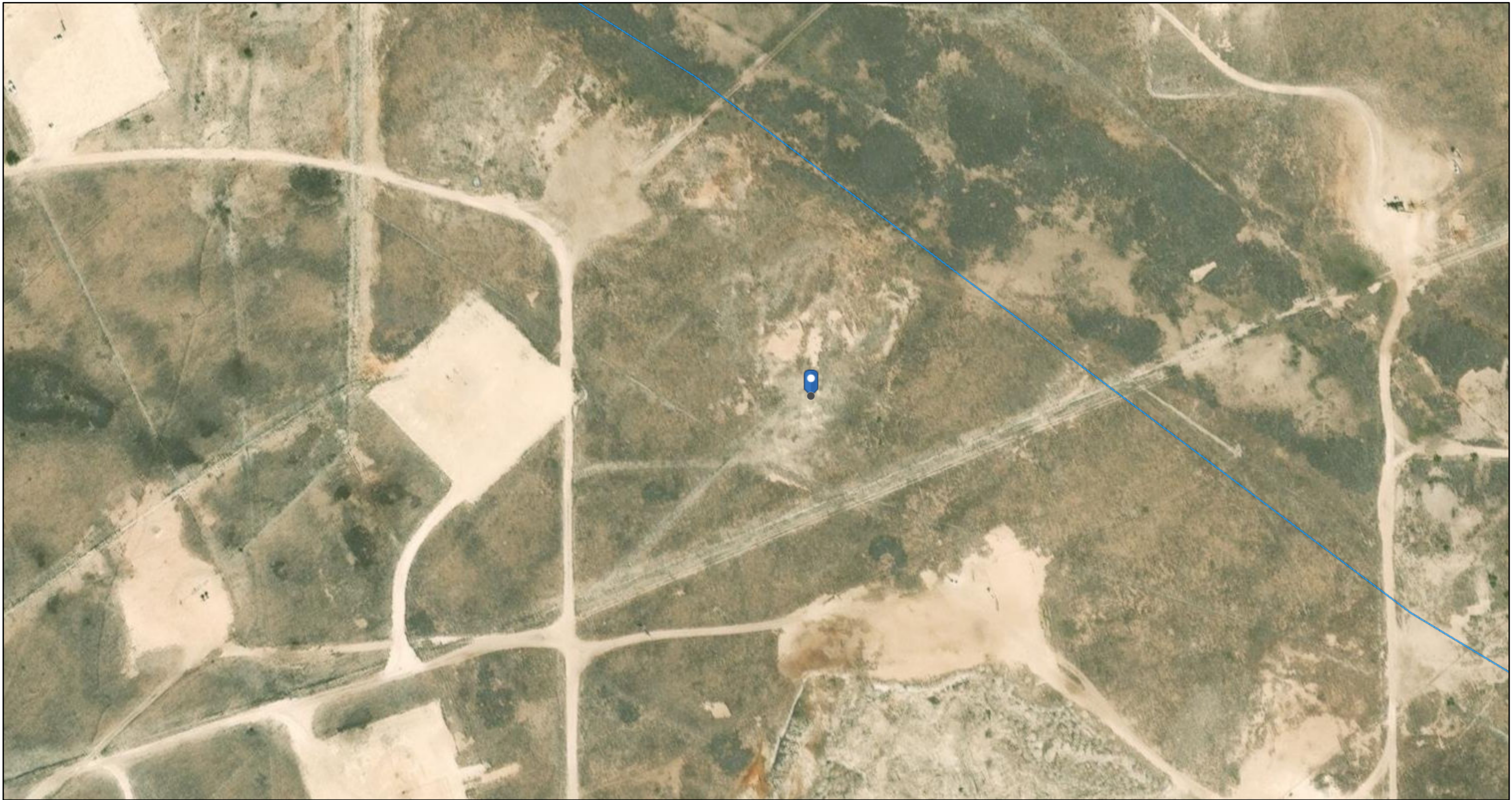
N-No minerals are owned by the U.S.

1:1,128



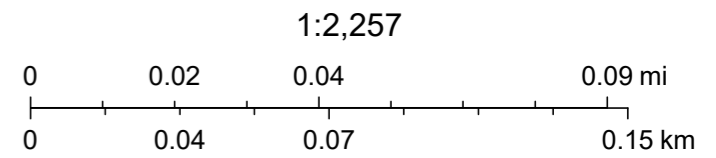
U.S. BLM, Maxar, Microsoft, Esri, HERE, Garmin, iPC

OCD Water Bodies



3/31/2025, 3:18:13 PM

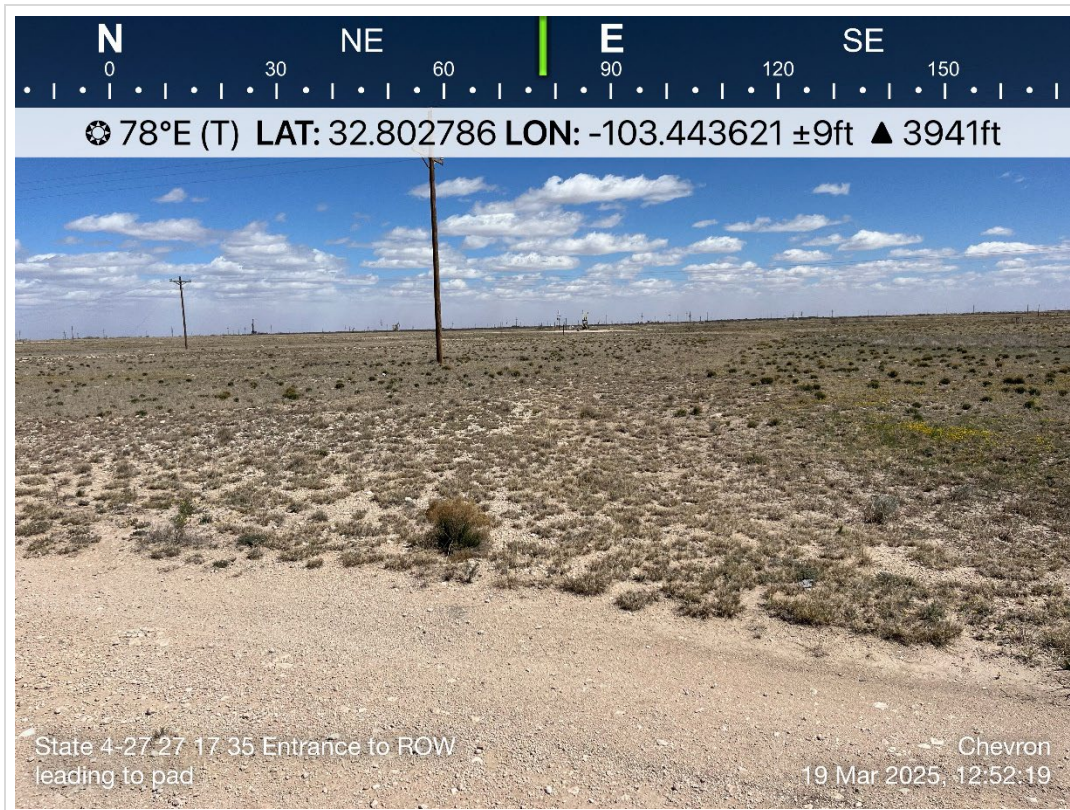
— OSE Streams



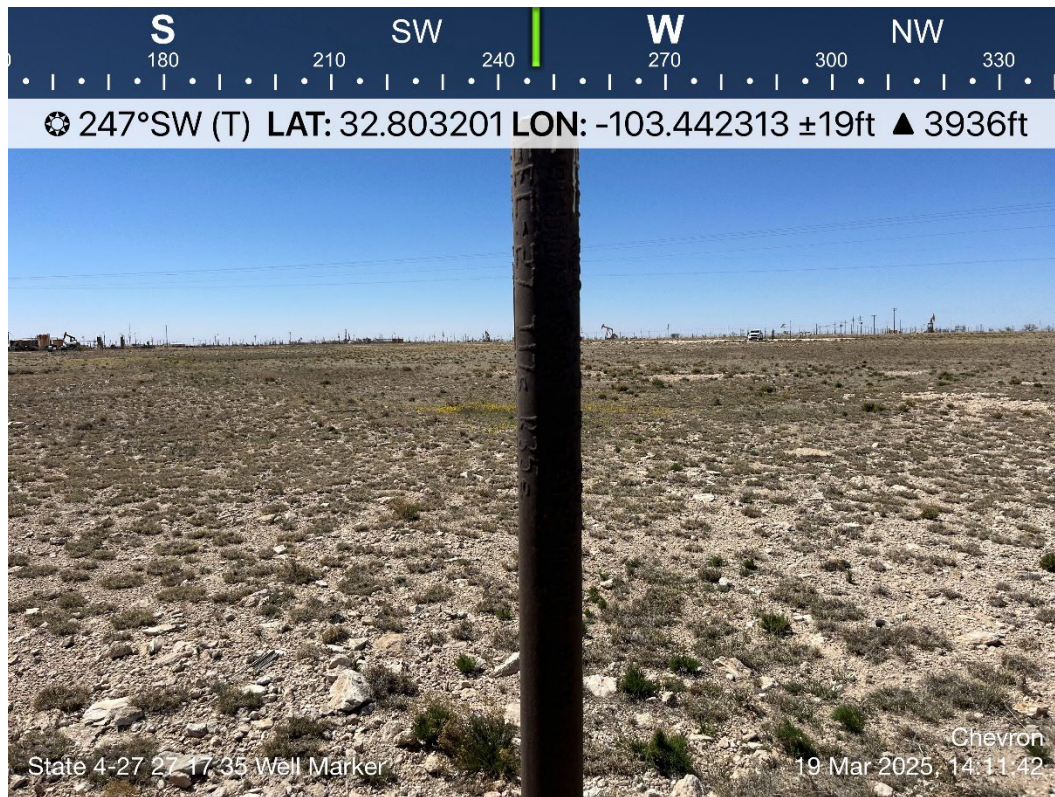
Maxar, Microsoft, Esri, HERE, Garmin, IPC, NM OSE

APPENDIX C

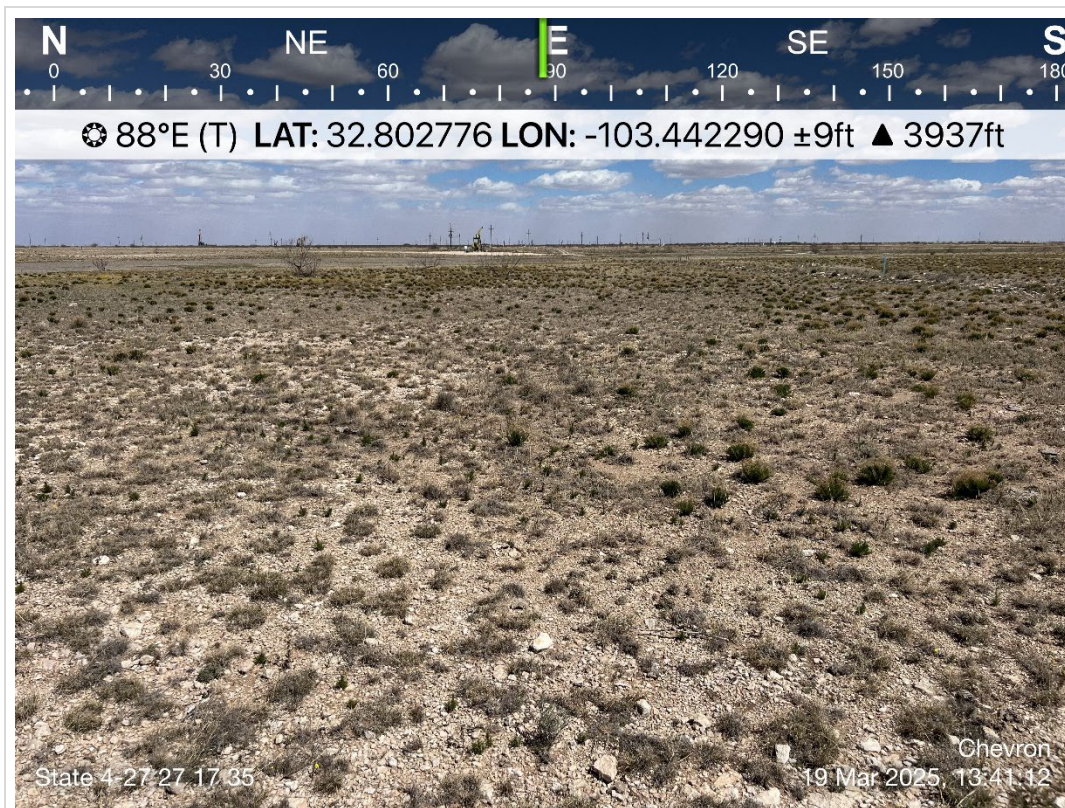
Photographic Documentation



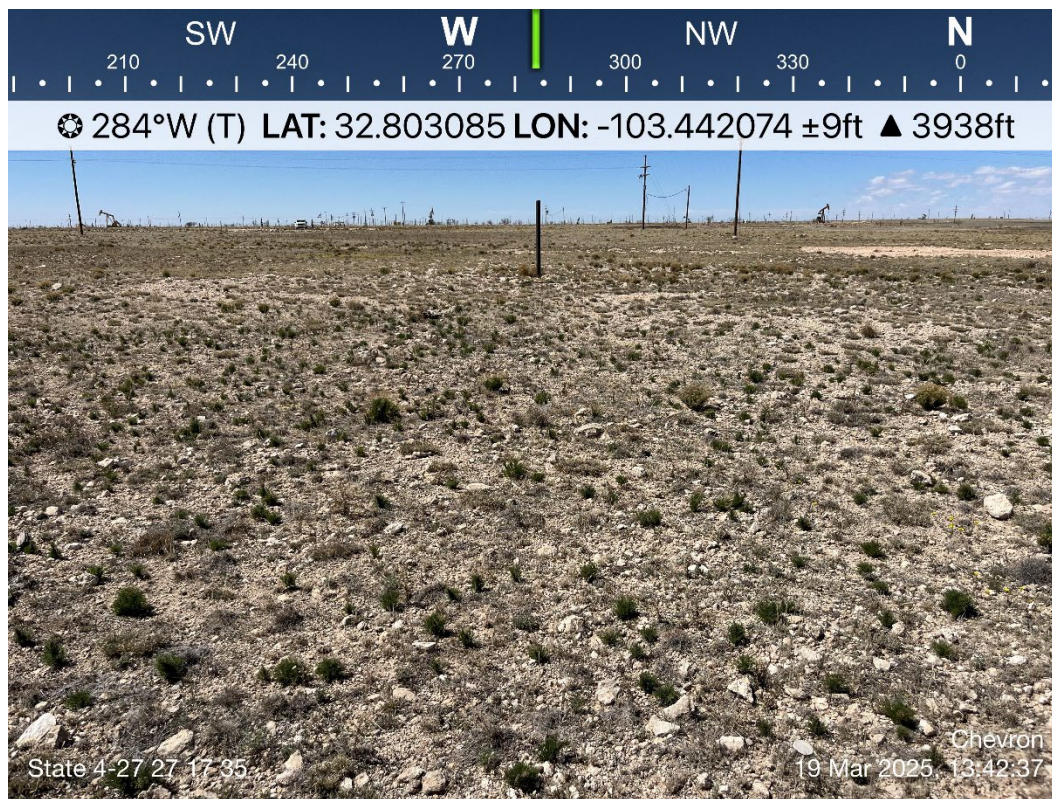
TETRA TECH, INC. PROJECT NO. 212C-MD-03824	DESCRIPTION	View east. Reclaimed lease road leading to former pad. Overhead powerlines transecting lease road.	1
	SITE NAME	State 4 27 #009	03/19/2025



TETRA TECH, INC. PROJECT NO. 212C-MD-03824	DESCRIPTION	View southwest. Well marker on reclaimed pad.	2
	SITE NAME	State 4 27 #009	03/19/2025



TETRA TECH, INC. PROJECT NO. 212C-MD-03824	DESCRIPTION	View east. Vegetative growth on reclaimed pad.	3
	SITE NAME	State 4 27 #009	03/19/2025



TETRA TECH, INC. PROJECT NO. 212C-MD-03824	DESCRIPTION	View west. Vegetative growth on reclaimed pad.	4
	SITE NAME	State 4 27 #009	03/19/2025



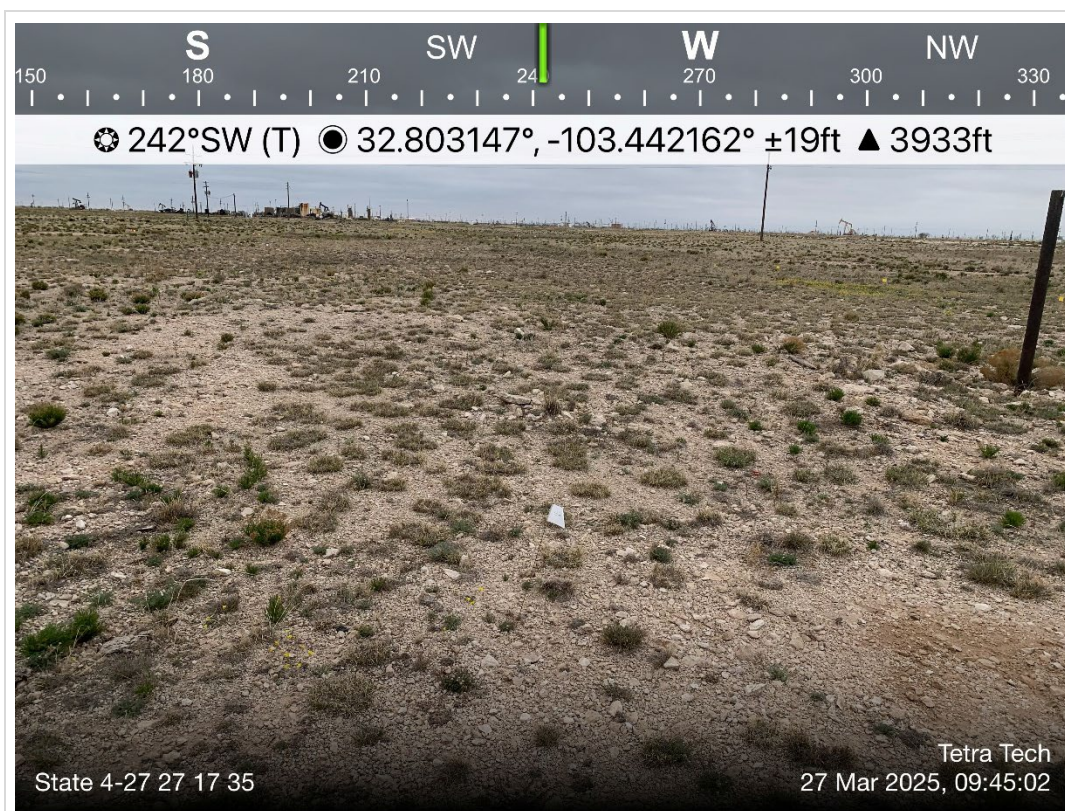
TETRA TECH, INC. PROJECT NO. 212C-MD-03824	DESCRIPTION	View south. Vegetative growth on reclaimed pad.	5
	SITE NAME	State 4 27 #009	03/19/2025



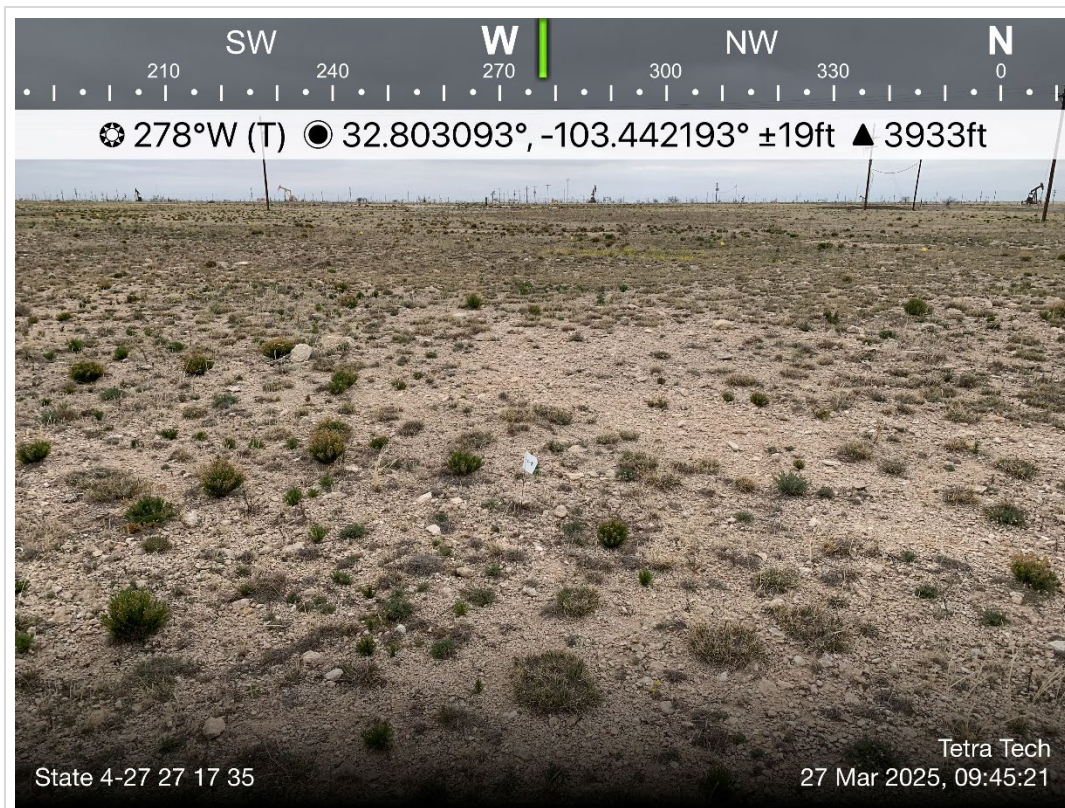
TETRA TECH, INC. PROJECT NO. 212C-MD-03824	DESCRIPTION	View north. Well marker on reclaimed pad.	6
	SITE NAME	State 4 27 #009	03/19/2025



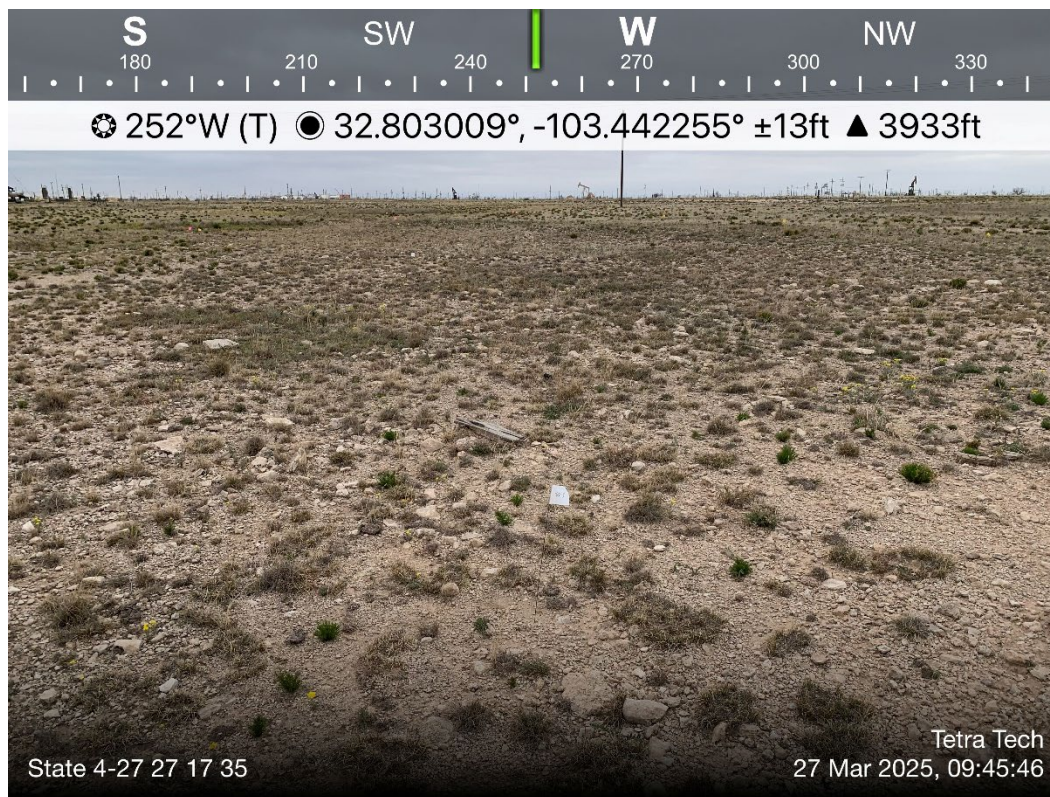
TETRA TECH, INC. PROJECT NO. 212C-MD-03824	DESCRIPTION	View southeast. Disconnected steel line adjacent to former pad.	7
	SITE NAME	State 4 27 #009	03/19/2025



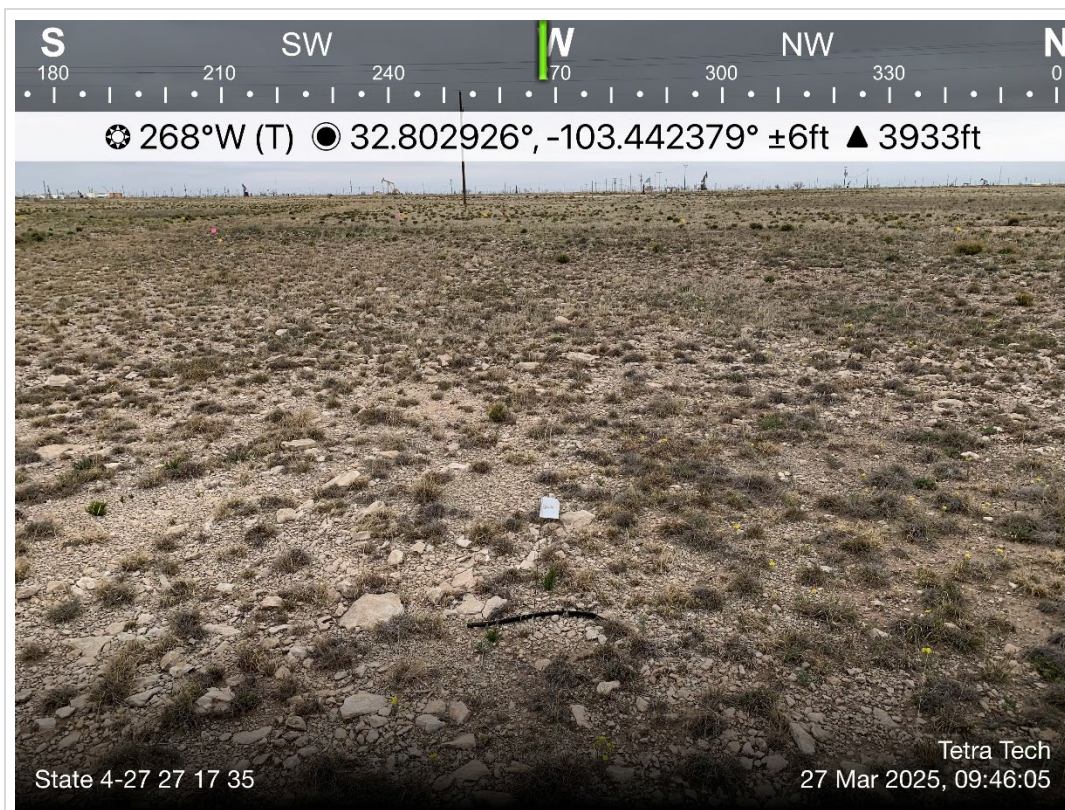
TETRA TECH, INC. PROJECT NO. 212C-MD-03824	DESCRIPTION	View southwest. Soil sample SS-1 location.	8
	SITE NAME	State 4 27 #009	03/27/2025



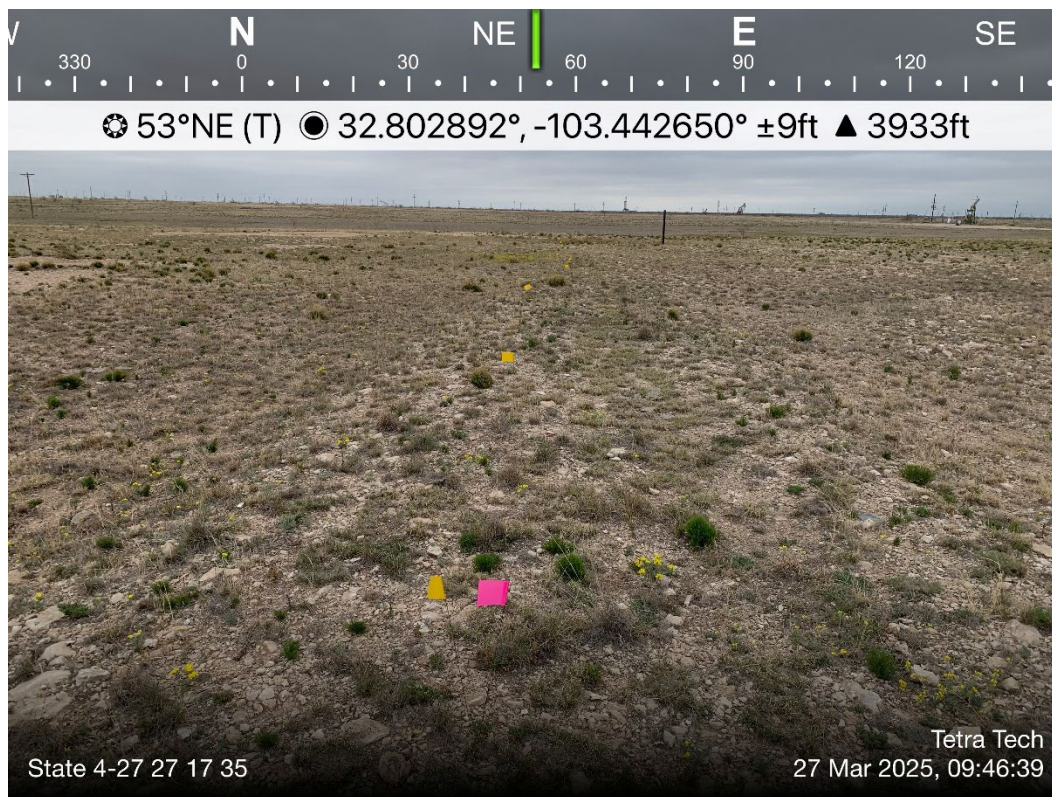
TETRA TECH, INC. PROJECT NO. 212C-MD-03824	DESCRIPTION	View west. Soil sample SS-2 location.	9
	SITE NAME	State 4 27 #009	03/27/2025



TETRA TECH, INC. PROJECT NO. 212C-MD-03824	DESCRIPTION	View southwest. Soil sample SS-3 location.	10
	SITE NAME	State 4 27 #009	03/27/2025



TETRA TECH, INC. PROJECT NO. 212C-MD-03824	DESCRIPTION	View west. Soil sample SS-4 location.	11
	SITE NAME	State 4 27 #009	03/27/2025



TETRA TECH, INC. PROJECT NO. 212C-MD-03824	DESCRIPTION	View northeast. Marked pipeline in reclaimed pad area.	12
	SITE NAME	State 4 27 #009	03/27/2025

APPENDIX D

Laboratory Analytical Data



PHONE (575) 393-2326 ° 101 E. MARLAND ° HOBBS, NM 88240

April 02, 2025

CHRISTIAN LLULL

TETRA TECH

901 WEST WALL STREET , STE 100

MIDLAND, TX 79701

RE: STATE 4-27 27 17 35, TASK 107

Enclosed are the results of analyses for samples received by the laboratory on 03/27/25 11:20.

Cardinal Laboratories is accredited through Texas NELAP under certificate number TX-C24-00112. Accreditation applies to drinking water, non-potable water and solid and chemical materials. All accredited analytes are denoted by an asterisk (*). For a complete list of accredited analytes and matrices visit the TCEQ website at www.tceq.texas.gov/field/qa/lab_accred_certif.html.

Cardinal Laboratories is accredited through the State of Colorado Department of Public Health and Environment for:

Method EPA 552.2	Haloacetic Acids (HAA-5)
Method EPA 524.2	Total Trihalomethanes (TTHM)
Method EPA 524.4	Regulated VOCs (V1, V2, V3)

Accreditation applies to public drinking water matrices.

This report meets NELAP requirements and is made up of a cover page, analytical results, and a copy of the original chain-of-custody. If you have any questions concerning this report, please feel free to contact me.

Sincerely,

A handwritten signature in black ink that reads "Celey D. Keene".

Celey D. Keene

Lab Director/Quality Manager



PHONE (575) 393-2326 ° 101 E. MARLAND ° HOBBS, NM 88240

Analytical Results For:

TETRA TECH
 CHRISTIAN LLULL
 901 WEST WALL STREET , STE 100
 MIDLAND TX, 79701
 Fax To: (432) 682-3946

Received:	03/27/2025	Sampling Date:	03/27/2025
Reported:	04/02/2025	Sampling Type:	Soil
Project Name:	STATE 4-27 27 17 35, TASK 107	Sampling Condition:	Cool & Intact
Project Number:	212C-MD-03824	Sample Received By:	Tamara Oldaker
Project Location:	CHEVRON - LEA CO NM		

Sample ID: SS - 1 (H251814-01)

BTEX 8021B		mg/kg		Analyzed By: JH					
Analyte	Result	Reporting Limit	Analyzed	Method Blank	BS	% Recovery	True Value QC	RPD	Qualifier
Benzene*	<0.050	0.050	03/31/2025	ND	1.80	89.9	2.00	0.147	
Toluene*	<0.050	0.050	03/31/2025	ND	1.87	93.3	2.00	0.802	
Ethylbenzene*	<0.050	0.050	03/31/2025	ND	1.88	93.8	2.00	1.12	
Total Xylenes*	<0.150	0.150	03/31/2025	ND	5.81	96.9	6.00	0.864	
Total BTEX	<0.300	0.300	03/31/2025	ND					

Surrogate: 4-Bromofluorobenzene (PID) 103 % 71.5-134

Chloride, SM4500Cl-B		mg/kg		Analyzed By: AC					
Analyte	Result	Reporting Limit	Analyzed	Method Blank	BS	% Recovery	True Value QC	RPD	Qualifier
Chloride	240	16.0	03/29/2025	ND	432	108	400	0.00	

TPH 8015M		mg/kg		Analyzed By: MS					
Analyte	Result	Reporting Limit	Analyzed	Method Blank	BS	% Recovery	True Value QC	RPD	Qualifier
GRO C6-C10*	<10.0	10.0	03/28/2025	ND	208	104	200	0.540	
DRO >C10-C28*	14.4	10.0	03/28/2025	ND	203	101	200	0.665	
EXT DRO >C28-C36	<10.0	10.0	03/28/2025	ND					

Surrogate: 1-Chlorooctane 77.2 % 44.4-145

Surrogate: 1-Chlorooctadecane 72.9 % 40.6-153

Cardinal Laboratories

*=Accredited Analyte

PLEASE NOTE: Liability and Damages. Cardinal's liability and client's exclusive remedy for any claim arising, whether based in contract or tort, shall be limited to the amount paid by client for analyses. All claims, including those for negligence and any other cause whatsoever shall be deemed waived unless made in writing and received by Cardinal within thirty (30) days after completion of the applicable service. In no event shall Cardinal be liable for incidental or consequential damages, including, without limitation, business interruptions, loss of use, or loss of profits incurred by client, its subsidiaries, affiliates or successors arising out of or related to the performance of the services hereunder by Cardinal, regardless of whether such claim is based upon any of the above stated reasons or otherwise. Results relate only to the samples identified above. This report shall not be reproduced except in full with written approval of Cardinal Laboratories.

Celey D. Keene, Lab Director/Quality Manager



PHONE (575) 393-2326 ° 101 E. MARLAND ° HOBBS, NM 88240

Analytical Results For:

TETRA TECH
 CHRISTIAN LLULL
 901 WEST WALL STREET , STE 100
 MIDLAND TX, 79701
 Fax To: (432) 682-3946

Received:	03/27/2025	Sampling Date:	03/27/2025
Reported:	04/02/2025	Sampling Type:	Soil
Project Name:	STATE 4-27 27 17 35, TASK 107	Sampling Condition:	Cool & Intact
Project Number:	212C-MD-03824	Sample Received By:	Tamara Oldaker
Project Location:	CHEVRON - LEA CO NM		

Sample ID: SS - 2 (H251814-02)

BTEX 8021B		mg/kg		Analyzed By: JH						
Analyte	Result	Reporting Limit	Analyzed	Method Blank	BS	% Recovery	True Value QC	RPD	Qualifier	
Benzene*	<0.050	0.050	03/31/2025	ND	1.80	89.9	2.00	0.147		
Toluene*	<0.050	0.050	03/31/2025	ND	1.87	93.3	2.00	0.802		
Ethylbenzene*	<0.050	0.050	03/31/2025	ND	1.88	93.8	2.00	1.12		
Total Xylenes*	<0.150	0.150	03/31/2025	ND	5.81	96.9	6.00	0.864		
Total BTEX	<0.300	0.300	03/31/2025	ND						

Surrogate: 4-Bromofluorobenzene (PID) 103 % 71.5-134

Chloride, SM4500CI-B		mg/kg		Analyzed By: AC						
Analyte	Result	Reporting Limit	Analyzed	Method Blank	BS	% Recovery	True Value QC	RPD	Qualifier	
Chloride	80.0	16.0	03/29/2025	ND	432	108	400	0.00		

TPH 8015M		mg/kg		Analyzed By: MS						
Analyte	Result	Reporting Limit	Analyzed	Method Blank	BS	% Recovery	True Value QC	RPD	Qualifier	
GRO C6-C10*	<10.0	10.0	03/28/2025	ND	208	104	200	0.540		
DRO >C10-C28*	<10.0	10.0	03/28/2025	ND	203	101	200	0.665		
EXT DRO >C28-C36	<10.0	10.0	03/28/2025	ND						

Surrogate: 1-Chlorooctane 81.2 % 44.4-145

Surrogate: 1-Chlorooctadecane 80.2 % 40.6-153

Cardinal Laboratories

*=Accredited Analyte

PLEASE NOTE: Liability and Damages. Cardinal's liability and client's exclusive remedy for any claim arising, whether based in contract or tort, shall be limited to the amount paid by client for analyses. All claims, including those for negligence and any other cause whatsoever shall be deemed waived unless made in writing and received by Cardinal within thirty (30) days after completion of the applicable service. In no event shall Cardinal be liable for incidental or consequential damages, including, without limitation, business interruptions, loss of use, or loss of profits incurred by client, its subsidiaries, affiliates or successors arising out of or related to the performance of the services hereunder by Cardinal, regardless of whether such claim is based upon any of the above stated reasons or otherwise. Results relate only to the samples identified above. This report shall not be reproduced except in full with written approval of Cardinal Laboratories.

Celey D. Keene, Lab Director/Quality Manager



PHONE (575) 393-2326 ° 101 E. MARLAND ° HOBBS, NM 88240

Analytical Results For:

TETRA TECH
 CHRISTIAN LLULL
 901 WEST WALL STREET , STE 100
 MIDLAND TX, 79701
 Fax To: (432) 682-3946

Received:	03/27/2025	Sampling Date:	03/27/2025
Reported:	04/02/2025	Sampling Type:	Soil
Project Name:	STATE 4-27 27 17 35, TASK 107	Sampling Condition:	Cool & Intact
Project Number:	212C-MD-03824	Sample Received By:	Tamara Oldaker
Project Location:	CHEVRON - LEA CO NM		

Sample ID: SS - 3 (H251814-03)

BTEX 8021B		mg/kg		Analyzed By: JH					
Analyte	Result	Reporting Limit	Analyzed	Method Blank	BS	% Recovery	True Value QC	RPD	Qualifier
Benzene*	<0.050	0.050	03/31/2025	ND	1.80	89.9	2.00	0.147	
Toluene*	<0.050	0.050	03/31/2025	ND	1.87	93.3	2.00	0.802	
Ethylbenzene*	<0.050	0.050	03/31/2025	ND	1.88	93.8	2.00	1.12	
Total Xylenes*	<0.150	0.150	03/31/2025	ND	5.81	96.9	6.00	0.864	
Total BTEX	<0.300	0.300	03/31/2025	ND					

Surrogate: 4-Bromofluorobenzene (PID) 103 % 71.5-134

Chloride, SM4500CI-B		mg/kg		Analyzed By: AC					
Analyte	Result	Reporting Limit	Analyzed	Method Blank	BS	% Recovery	True Value QC	RPD	Qualifier
Chloride	48.0	16.0	03/29/2025	ND	432	108	400	0.00	

TPH 8015M		mg/kg		Analyzed By: MS					
Analyte	Result	Reporting Limit	Analyzed	Method Blank	BS	% Recovery	True Value QC	RPD	Qualifier
GRO C6-C10*	<10.0	10.0	03/28/2025	ND	208	104	200	0.540	
DRO >C10-C28*	<10.0	10.0	03/28/2025	ND	203	101	200	0.665	
EXT DRO >C28-C36	<10.0	10.0	03/28/2025	ND					

Surrogate: 1-Chlorooctane 81.1 % 44.4-145

Surrogate: 1-Chlorooctadecane 77.2 % 40.6-153

Cardinal Laboratories

*=Accredited Analyte

PLEASE NOTE: Liability and Damages. Cardinal's liability and client's exclusive remedy for any claim arising, whether based in contract or tort, shall be limited to the amount paid by client for analyses. All claims, including those for negligence and any other cause whatsoever shall be deemed waived unless made in writing and received by Cardinal within thirty (30) days after completion of the applicable service. In no event shall Cardinal be liable for incidental or consequential damages, including, without limitation, business interruptions, loss of use, or loss of profits incurred by client, its subsidiaries, affiliates or successors arising out of or related to the performance of the services hereunder by Cardinal, regardless of whether such claim is based upon any of the above stated reasons or otherwise. Results relate only to the samples identified above. This report shall not be reproduced except in full with written approval of Cardinal Laboratories.

Celey D. Keene, Lab Director/Quality Manager



PHONE (575) 393-2326 ° 101 E. MARLAND ° HOBBS, NM 88240

Analytical Results For:

TETRA TECH
 CHRISTIAN LLULL
 901 WEST WALL STREET , STE 100
 MIDLAND TX, 79701
 Fax To: (432) 682-3946

Received:	03/27/2025	Sampling Date:	03/27/2025
Reported:	04/02/2025	Sampling Type:	Soil
Project Name:	STATE 4-27 27 17 35, TASK 107	Sampling Condition:	Cool & Intact
Project Number:	212C-MD-03824	Sample Received By:	Tamara Oldaker
Project Location:	CHEVRON - LEA CO NM		

Sample ID: SS - 4 (H251814-04)

BTEX 8021B		mg/kg		Analyzed By: JH					
Analyte	Result	Reporting Limit	Analyzed	Method Blank	BS	% Recovery	True Value QC	RPD	Qualifier
Benzene*	<0.050	0.050	03/31/2025	ND	1.80	89.9	2.00	0.147	
Toluene*	<0.050	0.050	03/31/2025	ND	1.87	93.3	2.00	0.802	
Ethylbenzene*	<0.050	0.050	03/31/2025	ND	1.88	93.8	2.00	1.12	
Total Xylenes*	<0.150	0.150	03/31/2025	ND	5.81	96.9	6.00	0.864	
Total BTEX	<0.300	0.300	03/31/2025	ND					

Surrogate: 4-Bromofluorobenzene (PID) 104 % 71.5-134

Chloride, SM4500CI-B		mg/kg		Analyzed By: AC					
Analyte	Result	Reporting Limit	Analyzed	Method Blank	BS	% Recovery	True Value QC	RPD	Qualifier
Chloride	96.0	16.0	03/29/2025	ND	432	108	400	0.00	

TPH 8015M		mg/kg		Analyzed By: MS					
Analyte	Result	Reporting Limit	Analyzed	Method Blank	BS	% Recovery	True Value QC	RPD	Qualifier
GRO C6-C10*	<10.0	10.0	03/28/2025	ND	208	104	200	0.540	
DRO >C10-C28*	<10.0	10.0	03/28/2025	ND	203	101	200	0.665	
EXT DRO >C28-C36	<10.0	10.0	03/28/2025	ND					

Surrogate: 1-Chlorooctane 81.5 % 44.4-145

Surrogate: 1-Chlorooctadecane 77.9 % 40.6-153

Cardinal Laboratories

*=Accredited Analyte

PLEASE NOTE: Liability and Damages. Cardinal's liability and client's exclusive remedy for any claim arising, whether based in contract or tort, shall be limited to the amount paid by client for analyses. All claims, including those for negligence and any other cause whatsoever shall be deemed waived unless made in writing and received by Cardinal within thirty (30) days after completion of the applicable service. In no event shall Cardinal be liable for incidental or consequential damages, including, without limitation, business interruptions, loss of use, or loss of profits incurred by client, its subsidiaries, affiliates or successors arising out of or related to the performance of the services hereunder by Cardinal, regardless of whether such claim is based upon any of the above stated reasons or otherwise. Results relate only to the samples identified above. This report shall not be reproduced except in full with written approval of Cardinal Laboratories.

Celey D. Keene, Lab Director/Quality Manager



PHONE (575) 393-2326 ° 101 E. MARLAND ° HOBBS, NM 88240

Notes and Definitions

- ND Analyte NOT DETECTED at or above the reporting limit
- RPD Relative Percent Difference
- ** Samples not received at proper temperature of 6°C or below.
- *** Insufficient time to reach temperature.
- Chloride by SM4500Cl-B does not require samples be received at or below 6°C
Samples reported on an as received basis (wet) unless otherwise noted on report

Cardinal Laboratories

*=Accredited Analyte

PLEASE NOTE: Liability and Damages. Cardinal's liability and client's exclusive remedy for any claim arising, whether based in contract or tort, shall be limited to the amount paid by client for analyses. All claims, including those for negligence and any other cause whatsoever shall be deemed waived unless made in writing and received by Cardinal within thirty (30) days after completion of the applicable service. In no event shall Cardinal be liable for incidental or consequential damages, including, without limitation, business interruptions, loss of use, or loss of profits incurred by client, its subsidiaries, affiliates or successors arising out of or related to the performance of the services hereunder by Cardinal, regardless of whether such claim is based upon any of the above stated reasons or otherwise. Results relate only to the samples identified above. This report shall not be reproduced except in full with written approval of Cardinal Laboratories.

Celey D. Keene, Lab Director/Quality Manager



CHAIN-OF-CUSTODY AND ANALYSIS REQUEST

101 East Marland, Hobbs, NM 88240
 (575) 393-2326 FAX (575) 393-2476

Company Name: Tetra Tech **BILL TO** ANALYSIS REQUEST

Project Manager: Christian Lull P.O. #: _____ Company: Tetra Tech
 Address: 8911 Capital of Texas Hwy, Suite 2310 Attn: Christian Lull
 City: Austin State: TX Zip: 78750 Address: EMAIL
 Phone #: (512)565-0190 Fax #: _____
 Project #: 212C-MD-03824 Project Owner: CHEVRON City: _____
 Project Name: State 4-27 27 17 35, Task 107 State: _____ Zip: _____
 Project Location: Lea County, New Mexico Phone #: _____
 Sampler Name: Carlos Tomlinson Fax #: _____

FOR LABOR ONLY
 Lab I.D. _____

Sample I.D.	(G)RAB OR (C)OMP.	# CONTAINERS	MATRIX						PRESERV.	SAMPLING	DATE	TIME	TPH 8015M	BTEX 8021B	Chloride SM4500Cl-B
			GROUNDWATER	WASTEWATER	SOIL	OIL	SLUDGE	OTHER :							
1	SS-1	G 1	X						X	3/27/25	9:57	X	X	X	
2	SS-2	G 1	X						X	3/27/25	10:00	X	X	X	
3	SS-3	G 1	X						X	3/27/25	10:01	X	X	X	
4	SS-4	G 1	X						X	3/27/25	10:05	X	X	X	

RELEASE NOTE: Liability and Damages: Cardinal's liability and client's exclusive remedy for any claim arising under this contract is limited to the amount paid by the client for the analysis. All claims, including those for negligence and any other cause whatsoever shall be deemed waived unless made in writing and received by Cardinal within 30 days after completion of the applicable service. In no event shall Cardinal be liable for incidental or consequential damages, including without limitation, business interruptions, loss of use, or loss of profits incurred by client, its subsidiaries, affiliates or successors arising out of or related to the performance of services hereunder by Cardinal, regardless of whether such claim is based upon any of the above stated reasons or otherwise.

Relinquished By: Carlos Tomlinson Date: 3/27/25 Received By: [Signature] Verbal Result: Yes No Add'l Phone #: _____
 Relinquished By: [Signature] Date: 3/27/25 Received By: [Signature] All Results are emailed. Please provide Email address: Christian.Lull@tetratech.com
 Delivered By: (Circle One) Sample Temp. - C: 8.4 Observed Temp. - C: 8.7 Sample Condition: Cool Heat In Out Checked By: [Signature] (Initials) [Signature]
 Sampler - UPS - Bus - Other: No No No Thermometer ID: #140 Correction Factor: +0.3°C Standard: Bacteria (only) Sample Condition: Yes No Yes No Corrected Temp. - C: _____

FORM-006 F.3.2.100/0721

† Cardinal cannot accept verbal changes. Please email changes to celey.keene@cardinallabnm.com

Sante Fe Main Office
Phone: (505) 476-3441

General Information
Phone: (505) 629-6116

Online Phone Directory
<https://www.emnrd.nm.gov/ocd/contact-us>

State of New Mexico
Energy, Minerals and Natural Resources
Oil Conservation Division
1220 S. St Francis Dr.
Santa Fe, NM 87505

QUESTIONS

Action 566925

QUESTIONS

Operator: CHEVRON U S A INC 6301 Deauville Blvd Midland, TX 79706	OGRID: 4323
	Action Number: 566925
	Action Type: [C-141] Revegetation Report C-141 (C-141-v-Revegetation)

QUESTIONS

Prerequisites	
Incident ID (n#)	nDEV4210
Incident Name	NDEV4210 STATE 4 -27 27 17 35 @ -27-17S-35E
Incident Type	Spill - Initial Data Load
Incident Status	Re-vegetation Report Received

Location of Release Source	
<i>Please answer all the questions in this group.</i>	
Site Name	STATE 4 -27 27 17 35
Date Release Discovered	10/11/1988
Surface Owner	State

Incident Details	
<i>Please answer all the questions in this group.</i>	
Incident Type	INIT
Did this release result in a fire or is the result of a fire	No
Did this release result in any injuries	No
Has this release reached or does it have a reasonable probability of reaching a watercourse	No
Has this release endangered or does it have a reasonable probability of endangering public health	No
Has this release substantially damaged or will it substantially damage property or the environment	No
Is this release of a volume that is or may with reasonable probability be detrimental to fresh water	No

Nature and Volume of Release	
<i>Material(s) released, please answer all that apply below. Any calculations or specific justifications for the volumes provided should be attached to the follow-up C-141 submission.</i>	
Crude Oil Released (bbls) Details	Not answered.
Produced Water Released (bbls) Details	Cause: Equipment Failure Flow Line - Production Produced Water Released: 8 BBL Recovered: 0 BBL Lost: 8 BBL.
Is the concentration of chloride in the produced water >10,000 mg/l	Yes
Condensate Released (bbls) Details	Not answered.
Natural Gas Vented (Mcf) Details	Not answered.
Natural Gas Flared (Mcf) Details	Not answered.
Other Released Details	Cause: Equipment Failure Flow Line - Production Produced Water Released: 2 BBL Recovered: 0 BBL Lost: 2 BBL.
Are there additional details for the questions above (i.e. any answer containing Other, Specify, Unknown, and/or Fire, or any negative lost amounts)	Not answered.

Sante Fe Main Office
Phone: (505) 476-3441

General Information
Phone: (505) 629-6116

Online Phone Directory
<https://www.emnrd.nm.gov/ocd/contact-us>

State of New Mexico
Energy, Minerals and Natural Resources
Oil Conservation Division
1220 S. St Francis Dr.
Santa Fe, NM 87505

QUESTIONS, Page 2

Action 566925

QUESTIONS (continued)

Operator: CHEVRON U S A INC 6301 Deauville Blvd Midland, TX 79706	OGRID: 4323
	Action Number: 566925
	Action Type: [C-141] Revegetation Report C-141 (C-141-v-Revegetation)

QUESTIONS

Nature and Volume of Release (continued)	
Is this a gas only submission (i.e. only significant Mcf values reported)	No, according to supplied volumes this does not appear to be a "gas only" report.
Was this a major release as defined by Subsection A of 19.15.29.7 NMAC	No
Reasons why this would be considered a submission for a notification of a major release	<i>Unavailable.</i>

With the implementation of the 19.15.27 NMAC (05/25/2021), venting and/or flaring of natural gas (i.e. gas only) are to be submitted on the C-129 form.

Initial Response

The responsible party must undertake the following actions immediately unless they could create a safety hazard that would result in injury.

The source of the release has been stopped	True
The impacted area has been secured to protect human health and the environment	True
Released materials have been contained via the use of berms or dikes, absorbent pads, or other containment devices	True
All free liquids and recoverable materials have been removed and managed appropriately	True
If all the actions described above have not been undertaken, explain why	<i>Not answered.</i>

Per Paragraph (4) of Subsection B of 19.15.29.8 NMAC the responsible party may commence remediation immediately after discovery of a release. If remediation has begun, please prepare and attach a narrative of actions to date in the follow-up C-141 submission. If remedial efforts have been successfully completed or if the release occurred within a lined containment area (see Subparagraph (a) of Paragraph (5) of Subsection A of 19.15.29.11 NMAC), please prepare and attach all information needed for closure evaluation in the follow-up C-141 submission.

I hereby certify that the information given above is true and complete to the best of my knowledge and understand that pursuant to OCD rules and regulations all operators are required to report and/or file certain release notifications and perform corrective actions for releases which may endanger public health or the environment. The acceptance of a C-141 report by the OCD does not relieve the operator of liability should their operations have failed to adequately investigate and remediate contamination that pose a threat to groundwater, surface water, human health or the environment. In addition, OCD acceptance of a C-141 report does not relieve the operator of responsibility for compliance with any other federal, state, or local laws and/or regulations.

I hereby agree and sign off to the above statement	Name: loyd Tyler Title: Environmental Specialist Email: loyd.tyler@chevron.com Date: 03/26/2026
--	--

Sante Fe Main Office
Phone: (505) 476-3441

General Information
Phone: (505) 629-6116

Online Phone Directory
<https://www.emnrd.nm.gov/ocd/contact-us>

State of New Mexico
Energy, Minerals and Natural Resources
Oil Conservation Division
1220 S. St Francis Dr.
Santa Fe, NM 87505

QUESTIONS, Page 3

Action 566925

QUESTIONS (continued)

Operator: CHEVRON U S A INC 6301 Deauville Blvd Midland, TX 79706	OGRID: 4323
	Action Number: 566925
	Action Type: [C-141] Revegetation Report C-141 (C-141-v-Revegetation)

QUESTIONS

Site Characterization

Please answer all the questions in this group (only required when seeking remediation plan approval and beyond). This information must be provided to the appropriate district office no later than 90 days after the release discovery date.

What is the shallowest depth to groundwater beneath the area affected by the release in feet below ground surface (ft bgs)	Between 51 and 75 (ft.)
What method was used to determine the depth to ground water	NM OSE iWaters Database Search
Did this release impact groundwater or surface water	No
What is the minimum distance, between the closest lateral extents of the release and the following surface areas:	
A continuously flowing watercourse or any other significant watercourse	Between 100 and 200 (ft.)
Any lakebed, sinkhole, or playa lake (measured from the ordinary high-water mark)	Between 1/2 and 1 (mi.)
An occupied permanent residence, school, hospital, institution, or church	Greater than 5 (mi.)
A spring or a private domestic fresh water well used by less than five households for domestic or stock watering purposes	Greater than 5 (mi.)
Any other fresh water well or spring	Greater than 5 (mi.)
Incorporated municipal boundaries or a defined municipal fresh water well field	Greater than 5 (mi.)
A wetland	Between 300 and 500 (ft.)
A subsurface mine	Greater than 5 (mi.)
An (non-karst) unstable area	Greater than 5 (mi.)
Categorize the risk of this well / site being in a karst geology	Low
A 100-year floodplain	Greater than 5 (mi.)
Did the release impact areas not on an exploration, development, production, or storage site	No

Remediation Plan

Please answer all the questions that apply or are indicated. This information must be provided to the appropriate district office no later than 90 days after the release discovery date.

Requesting a remediation plan approval with this submission	Yes
<i>Attach a comprehensive report demonstrating the lateral and vertical extents of soil contamination associated with the release have been determined, pursuant to 19.15.29.11 NMAC and 19.15.29.13 NMAC.</i>	
Have the lateral and vertical extents of contamination been fully delineated	Yes
Was this release entirely contained within a lined containment area	No

Soil Contamination Sampling: (Provide the highest observable value for each, in milligrams per kilograms.)

Chloride (EPA 300.0 or SM4500 Cl B)	96
TPH (GRO+DRO+MRO) (EPA SW-846 Method 8015M)	14.4
GRO+DRO (EPA SW-846 Method 8015M)	0
BTEX (EPA SW-846 Method 8021B or 8260B)	0
Benzene (EPA SW-846 Method 8021B or 8260B)	0

Per Subsection B of 19.15.29.11 NMAC unless the site characterization report includes completed efforts at remediation, the report must include a proposed remediation plan in accordance with 19.15.29.12 NMAC, which includes the anticipated timelines for beginning and completing the remediation.

On what estimated date will the remediation commence	03/27/2025
On what date will (or did) the final sampling or liner inspection occur	03/27/2025
On what date will (or was) the remediation complete(d)	03/27/2025
What is the estimated surface area (in square feet) that will be reclaimed	0
What is the estimated volume (in cubic yards) that will be reclaimed	0
What is the estimated surface area (in square feet) that will be remediated	0
What is the estimated volume (in cubic yards) that will be remediated	0

These estimated dates and measurements are recognized to be the best guess or calculation at the time of submission and may (be) change(d) over time as more remediation efforts are completed.
The OCD recognizes that proposed remediation measures may have to be minimally adjusted in accordance with the physical realities encountered during remediation. If the responsible party has any need to significantly deviate from the remediation plan proposed, then it should consult with the division to determine if another remediation plan submission is required.

Sante Fe Main Office
Phone: (505) 476-3441

General Information
Phone: (505) 629-6116

Online Phone Directory
<https://www.emnrd.nm.gov/ocd/contact-us>

State of New Mexico
Energy, Minerals and Natural Resources
Oil Conservation Division
1220 S. St Francis Dr.
Santa Fe, NM 87505

QUESTIONS, Page 4

Action 566925

QUESTIONS (continued)

Operator: CHEVRON U S A INC 6301 Deauville Blvd Midland, TX 79706	OGRID: 4323
	Action Number: 566925
	Action Type: [C-141] Revegetation Report C-141 (C-141-v-Revegetation)

QUESTIONS

Remediation Plan (continued)

Please answer all the questions that apply or are indicated. This information must be provided to the appropriate district office no later than 90 days after the release discovery date.

This remediation will (or is expected to) utilize the following processes to remediate / reduce contaminants:

(Select all answers below that apply.)

(Ex Situ) Excavation and off-site disposal (i.e. dig and haul, hydrovac, etc.)	No
(Ex Situ) Excavation and on-site remediation (i.e. On-Site Land Farms)	No
(In Situ) Soil Vapor Extraction	No
(In Situ) Chemical processing (i.e. Soil Shredding, Potassium Permanganate, etc.)	No
(In Situ) Biological processing (i.e. Microbes / Fertilizer, etc.)	No
(In Situ) Physical processing (i.e. Soil Washing, Gypsum, Disking, etc.)	No
Ground Water Abatement pursuant to 19.15.30 NMAC	No
OTHER (Non-listed remedial process)	Yes
Other Non-listed Remedial Process. Please specify	Unknown method used at time of this report

Per Subsection B of 19.15.29.11 NMAC unless the site characterization report includes completed efforts at remediation, the report must include a proposed remediation plan in accordance with 19.15.29.12 NMAC, which includes the anticipated timelines for beginning and completing the remediation.

I hereby certify that the information given above is true and complete to the best of my knowledge and understand that pursuant to OCD rules and regulations all operators are required to report and/or file certain release notifications and perform corrective actions for releases which may endanger public health or the environment. The acceptance of a C-141 report by the OCD does not relieve the operator of liability should their operations have failed to adequately investigate and remediate contamination that pose a threat to groundwater, surface water, human health or the environment. In addition, OCD acceptance of a C-141 report does not relieve the operator of responsibility for compliance with any other federal, state, or local laws and/or regulations.

I hereby agree and sign off to the above statement	Name: loyd Tyler Title: Environmental Specialist Email: loyd.tyler@chevron.com Date: 03/26/2026
--	--

The OCD recognizes that proposed remediation measures may have to be minimally adjusted in accordance with the physical realities encountered during remediation. If the responsible party has any need to significantly deviate from the remediation plan proposed, then it should consult with the division to determine if another remediation plan submission is required.

Sante Fe Main Office
Phone: (505) 476-3441

General Information
Phone: (505) 629-6116

Online Phone Directory
<https://www.emnrd.nm.gov/ocd/contact-us>

State of New Mexico
Energy, Minerals and Natural Resources
Oil Conservation Division
1220 S. St Francis Dr.
Santa Fe, NM 87505

QUESTIONS, Page 5

Action 566925

QUESTIONS (continued)

Operator: CHEVRON U S A INC 6301 Deauville Blvd Midland, TX 79706	OGRID: 4323
	Action Number: 566925
	Action Type: [C-141] Revegetation Report C-141 (C-141-v-Revegetation)

QUESTIONS

Deferral Requests Only	
<i>Only answer the questions in this group if seeking a deferral upon approval this submission. Each of the following items must be confirmed as part of any request for deferral of remediation.</i>	
Requesting a deferral of the remediation closure due date with the approval of this submission	No

Sante Fe Main Office
Phone: (505) 476-3441

General Information
Phone: (505) 629-6116

Online Phone Directory
<https://www.emnrd.nm.gov/ocd/contact-us>

State of New Mexico
Energy, Minerals and Natural Resources
Oil Conservation Division
1220 S. St Francis Dr.
Santa Fe, NM 87505

QUESTIONS, Page 6

Action 566925

QUESTIONS (continued)

Operator: CHEVRON U S A INC 6301 Deauville Blvd Midland, TX 79706	OGRID: 4323
	Action Number: 566925
	Action Type: [C-141] Revegetation Report C-141 (C-141-v-Revegetation)

QUESTIONS

Sampling Event Information	
Last sampling notification (C-141N) recorded	520735
Sampling date pursuant to Subparagraph (a) of Paragraph (1) of Subsection D of 19.15.29.12 NMAC	03/27/2025
What was the (estimated) number of samples that were to be gathered	4
What was the sampling surface area in square feet	5304

Remediation Closure Request

Only answer the questions in this group if seeking remediation closure for this release because all remediation steps have been completed.

Requesting a remediation closure approval with this submission	Yes
Have the lateral and vertical extents of contamination been fully delineated	Yes
Was this release entirely contained within a lined containment area	No
All areas reasonably needed for production or subsequent drilling operations have been stabilized, returned to the sites existing grade, and have a soil cover that prevents ponding of water, minimizing dust and erosion	Yes
What was the total surface area (in square feet) remediated	0
What was the total volume (cubic yards) remediated	0
All areas not reasonably needed for production or subsequent drilling operations have been reclaimed to contain a minimum of four feet of non-waste contain earthen material with concentrations less than 600 mg/kg chlorides, 100 mg/kg TPH, 50 mg/kg BTEX, and 10 mg/kg Benzene	Yes
What was the total surface area (in square feet) reclaimed	0
What was the total volume (in cubic yards) reclaimed	0
Summarize any additional remediation activities not included by answers (above)	n/a

The responsible party must attach information demonstrating they have complied with all applicable closure requirements and any conditions or directives of the OCD. This demonstration should be in the form of a comprehensive report (in .pdf format) including a scaled site map, sampling diagrams, relevant field notes, photographs of any excavation prior to backfilling, laboratory data including chain of custody documents of final sampling, and a narrative of the remedial activities. Refer to 19.15.29.12 NMAC.

I hereby certify that the information given above is true and complete to the best of my knowledge and understand that pursuant to OCD rules and regulations all operators are required to report and/or file certain release notifications and perform corrective actions for releases which may endanger public health or the environment. The acceptance of a C-141 report by the OCD does not relieve the operator of liability should their operations have failed to adequately investigate and remediate contamination that pose a threat to groundwater, surface water, human health or the environment. In addition, OCD acceptance of a C-141 report does not relieve the operator of responsibility for compliance with any other federal, state, or local laws and/or regulations. The responsible party acknowledges they must substantially restore, reclaim, and re-vegetate the impacted surface area to the conditions that existed prior to the release or their final land use in accordance with 19.15.29.13 NMAC including notification to the OCD when reclamation and re-vegetation are complete.

I hereby agree and sign off to the above statement	Name: loyd Tyler Title: Environmental Specialist Email: loyd.tyler@chevron.com Date: 03/26/2026
--	--

Sante Fe Main Office
Phone: (505) 476-3441

General Information
Phone: (505) 629-6116

Online Phone Directory
<https://www.emnrd.nm.gov/ocd/contact-us>

State of New Mexico
Energy, Minerals and Natural Resources
Oil Conservation Division
1220 S. St Francis Dr.
Santa Fe, NM 87505

QUESTIONS, Page 7

Action 566925

QUESTIONS (continued)

Operator: CHEVRON U S A INC 6301 Deauville Blvd Midland, TX 79706	OGRID: 4323
	Action Number: 566925
	Action Type: [C-141] Revegetation Report C-141 (C-141-v-Revegetation)

QUESTIONS

Reclamation Report	
<i>Only answer the questions in this group if all reclamation steps have been completed.</i>	
Requesting a reclamation approval with this submission	Yes
What was the total reclamation surface area (in square feet) for this site	43877
What was the total volume of replacement material (in cubic yards) for this site	0
<i>Per Paragraph (1) of Subsection D of 19.15.29.13 NMAC the reclamation must contain a minimum of four feet of non-waste containing, uncontaminated, earthen material with chloride concentrations less than 600 mg/kg as analyzed by EPA Method 300.0, or other test methods approved by the division. The soil cover must include a top layer, which is either the background thickness of topsoil or one foot of suitable material to establish vegetation at the site, whichever is greater.</i>	
Is the soil top layer complete and is it suitable material to establish vegetation	Yes
On what (estimated) date will (or was) the reseeded commence(d)	03/27/2025
Summarize any additional reclamation activities not included by answers (above)	n/a
<i>The responsible party must attach information demonstrating they have complied with all applicable reclamation requirements and any conditions or directives of the OCD. This demonstration should be in the form of attachments (in .pdf format) including a scaled site map, any proposed reseeded plans or relevant field notes, photographs of reclaimed area, and a narrative of the reclamation activities. Refer to 19.15.29.13 NMAC.</i>	
I hereby certify that the information given above is true and complete to the best of my knowledge and understand that pursuant to OCD rules and regulations all operators are required to report and/or file certain release notifications and perform corrective actions for releases which may endanger public health or the environment. The acceptance of a C-141 report by the OCD does not relieve the operator of liability should their operations have failed to adequately investigate and remediate contamination that pose a threat to groundwater, surface water, human health or the environment. In addition, OCD acceptance of a C-141 report does not relieve the operator of responsibility for compliance with any other federal, state, or local laws and/or regulations. The responsible party acknowledges they must substantially restore, reclaim, and re-vegetate the impacted surface area to the conditions that existed prior to the release or their final land use in accordance with 19.15.29.13 NMAC including notification to the OCD when reclamation and re-vegetation are complete.	
I hereby agree and sign off to the above statement	Name: loyd Tyler Title: Environmental Specialist Email: loyd.tyler@chevron.com Date: 03/26/2026

Sante Fe Main Office
Phone: (505) 476-3441

General Information
Phone: (505) 629-6116

Online Phone Directory
<https://www.emnrd.nm.gov/ocd/contact-us>

State of New Mexico
Energy, Minerals and Natural Resources
Oil Conservation Division
1220 S. St Francis Dr.
Santa Fe, NM 87505

QUESTIONS, Page 8

Action 566925

QUESTIONS (continued)

Operator: CHEVRON U S A INC 6301 Deauville Blvd Midland, TX 79706	OGRID: 4323
	Action Number: 566925
	Action Type: [C-141] Revegetation Report C-141 (C-141-v-Revegetation)

QUESTIONS

Revegetation Report

Only answer the questions in this group if all surface restoration, reclamation and re-vegetation obligations have been satisfied.

Requesting a restoration complete approval with this submission	Yes
What was the total revegetation surface area (in square feet) for this site	43877

Per Paragraph (2) of Subsection D of 19.15.29.13 NMAC the responsible party must reseed disturbed area in the first favorable growing season following closure of the site.

On what date did the reseeded commence	03/27/2025
On what date was the vegetative cover inspected	03/27/2025
What was the life form ratio compared to pre-disturbance levels	50
What was the total percent plant cover compared to pre-disturbance levels	70

Summarize any additional revegetation activities not included by answers (above)	n/a
--	-----

The responsible party must attach information demonstrating they have complied with all applicable re-vegetation requirements and any conditions or directives of the OCD. This demonstration should be in the form of attachments (in .pdf format) including a scaled site map, any life form ratio and percent plant cover sampling diagrams or other relevant field notes, photographs of re-vegetated areas, and a narrative of the re-vegetation activities. Refer to 19.15.29.13 NMAC.

I hereby certify that the information given above is true and complete to the best of my knowledge and understand that pursuant to OCD rules and regulations all operators are required to report and/or file certain release notifications and perform corrective actions for releases which may endanger public health or the environment. The acceptance of a C-141 report by the OCD does not relieve the operator of liability should their operations have failed to adequately investigate and remediate contamination that pose a threat to groundwater, surface water, human health or the environment. In addition, OCD acceptance of a C-141 report does not relieve the operator of responsibility for compliance with any other federal, state, or local laws and/or regulations. The responsible party acknowledges they must substantially restore, reclaim, and re-vegetate the impacted surface area to the conditions that existed prior to the release or their final land use in accordance with 19.15.29.13 NMAC including notification to the OCD when reclamation and re-vegetation are complete.

I hereby agree and sign off to the above statement	Name: loyd Tyler Title: Environmental Specialist Email: loyd.tyler@chevron.com Date: 03/26/2026
--	--

Per Paragraph (4) of Subsection (D) of 19.15.29.13 NMAC for any major or minor release containing liquids, the responsible party must notify the division when reclamation and re-vegetation are complete.

Sante Fe Main Office
Phone: (505) 476-3441

General Information
Phone: (505) 629-6116

Online Phone Directory
<https://www.emnrd.nm.gov/ocd/contact-us>

State of New Mexico
Energy, Minerals and Natural Resources
Oil Conservation Division
1220 S. St Francis Dr.
Santa Fe, NM 87505

CONDITIONS

Action 566925

CONDITIONS

Operator: CHEVRON U S A INC 6301 Deauville Blvd Midland, TX 79706	OGRID: 4323
	Action Number: 566925
	Action Type: [C-141] Revegetation Report C-141 (C-141-v-Revegetation)

CONDITIONS

Created By	Condition	Condition Date
rhamlet	We have received your Reclamation Revegetation Report for Incident #NDEV4210 1988 MINOR ARVRR INIT - State 4 27 #009 Flowline Release, thank you. The Reclamation Revegetation Report is approved.	4/14/2026