



ENSOLUM

CLOSURE REPORT

Property:

Trunk K #3
Unit Letter B, S 08, T 26 N R 7 W
Rio Arriba County, New Mexico

New Mexico EMNRD OCD Incident ID No. NAPP2601353677

April 7, 2026

Ensolum Project No. 05A1226399

Prepared for:

Enterprise Field Services, LLC
614 Reilly Avenue
Farmington, NM 87401
Attn: Mr. Thomas Long

Prepared by:

Chad D'Aponti
Project Scientist

Kyle Summers
Senior Managing Geologist

TABLE OF CONTENTS

1.0	INTRODUCTION	1
1.1	Site Description & Background	1
1.2	Project Objective	1
2.0	CLOSURE CRITERIA	1
3.0	SOIL REMEDIATION ACTIVITIES	3
4.0	SOIL SAMPLING PROGRAM	3
5.0	SOIL LABORATORY ANALYTICAL METHODS	4
6.0	SOIL DATA EVALUATION	4
7.0	RECLAMATION	5
8.0	REVEGETATION	5
9.0	FINDINGS AND RECOMMENDATION	5
10.0	STANDARDS OF CARE, LIMITATIONS, AND RELIANCE	5
10.1	Standard of Care	5
10.2	Limitations	5
10.3	Reliance.....	6

LIST OF APPENDICES

Appendix A – Figures

- Figure 1: Topographic Map
- Figure 2: Site Vicinity Map
- Figure 3: Site Map

Appendix B – Siting Figures and Documentation

- Figure A: 1.0 Mile Radius Water Well/POD Location Map
- Figure B: Cathodic Protection Well Recorded Depth to Water
- Figure C: 300 Foot Radius Watercourse and Drainage Identification
- Figure D: 300 Foot Radius Occupied Structure Identification
- Figure E: Water Well and Natural Spring Location
- Figure F: Wetlands
- Figure G: Mines, Mills, and Quarries
- Figure H: 100-Year Flood Plain Map

Appendix C – Executed C-138 Solid Waste Acceptance Form

Appendix D – Photographic Documentation

Appendix E – Regulatory Correspondence

Appendix F – Table 1 - Soil Analytical Summary

Appendix G – Laboratory Data Sheets & Chain of Custody Documentation

1.0 INTRODUCTION

1.1 Site Description & Background

Operator:	Enterprise Field Services, LLC / Enterprise Products Operating LLC (Enterprise)
Site Name:	Trunk K #3 (Site)
NM EMNRD OCD Incident ID No.	NAPP2601353677
Location:	36.508013° North, 107.597427° West Unit Letter B, Section 8, Township 26 North, Range 7 West Rio Arriba County, New Mexico
Property:	Bureau of Land Management (BLM)
Regulatory:	New Mexico (NM) Energy, Minerals and Natural Resources Department (EMNRD) Oil Conservation Division (OCD)

On December 30, 2025, a potential release of natural gas was identified from the Trunk K #3 pipeline. Enterprise subsequently isolated and locked the pipeline out of service. On January 13, 2026, Enterprise initiated activities to repair the pipeline and remediate potential petroleum hydrocarbon impact. On January 15, 2026, Enterprise determined the release was “reportable” due to the potential volume of impacted soil. The NM EMNRD OCD was subsequently notified.

A **Topographic Map** depicting the location of the Site is included as **Figure 1**, and a **Site Vicinity Map** is included as **Figure 2** in **Appendix A**.

1.2 Project Objective

The primary objective of the closure activities was to reduce constituent of concern (COC) concentrations in the on-site soils to below the applicable NM EMNRD OCD closure criteria.

2.0 CLOSURE CRITERIA

The Site is subject to regulatory oversight by the NM EMNRD OCD. During the evaluation and remediation of the Site, Ensolum, LLC (Ensolum) referenced New Mexico Administrative Code (NMAC) 19.15.29 *Releases*, which establishes investigation and abatement action requirements for oil and gas release sites that are subject to reporting and/or corrective action. The appropriate closure criteria for sites are determined using the siting requirements outlined in Paragraph (4) of Subsection C of 19.15.29.12 NMAC. Ensolum utilized the general site characteristics and information available from NM state agency databases and federal agency geospatial databases to determine the appropriate closure criteria for the Site. Supporting figures and documentation associated with the following Siting bullets are provided in **Appendix B**.

- The NM Office of the State Engineer (OSE) tracks the usage and assignment of water rights and water well installations and records this information in the Water Rights Reporting System (WRRS) database. Water wells and other points of diversion (PODs) are each assigned POD numbers in the database (which is searchable and includes an interactive map). One POD water well and one United States Geological Survey (USGS) test well with recorded depths to water (DTW) were identified within one mile of the in an adjacent Public Land Survey System (PLSS) section (**Figure A, Appendix B**). The nearest POD, POD SJ-02402 is located approximately 2,428 feet northwest of the Site and is approximately three feet lower in elevation than the Site. The recorded DTW for this well is 18 feet below grade surface (bgs).

- No cathodic protection wells (CPWs) with recorded depths to water were identified in the NM EMNRD OCD imaging database within one mile of the Site (**Figure B, Appendix B**).
- The Site is not located within 300 feet of a NM EMNRD OCD-defined significant watercourse (**Figure C, Appendix B**). A “blue line” ephemeral wash is located approximately 610 feet north of the Site.
- The Site is located within 200 feet of a lakebed, sinkhole, or playa lake. An apparently dry stock pond is located approximately 136 feet northwest of the Site.
- The Site is not located within 300 feet of a permanent residence, school, hospital, institution, or church (**Figure D, Appendix B**).
- No springs or private domestic freshwater wells used by less than five households for domestic or stock watering purposes were identified within 500 feet of the Site, but an apparently dry stock pond is located approximately 136 feet northwest of the Site (**Figure E, Appendix B**).
- The Site is not located within 1,000 feet of a spring (**Figure E, Appendix B**).
- The Site is not located within incorporated municipal boundaries or within a defined municipal fresh water well field covered under a municipal ordinance adopted pursuant to New Mexico Statutes Annotated (NMSA) 1978, Section 3-27-3.
- Based on information identified in the U.S. Fish & Wildlife Service National Wetlands Inventory Wetlands Mapper, the Site is within 300 feet of a wetland (**Figure F, Appendix B**). A freshwater emergent wetland in the form of an apparently dry stock pond is located approximately 136 feet northwest of the Site.
- Based on information identified in the NM Mining and Minerals Division’s Geographic Information System (GIS) Maps and Mine Data database, the Site is not within an area overlying a subsurface mine (**Figure G, Appendix B**).
- The Site is not located within an unstable area per Paragraph (6) of Subsection U of 19.15.2.7 NMAC.
- Based on information provided by the Federal Emergency Management Agency (FEMA) National Flood Hazard Layer (NFHL) geospatial database, the Site is not within a 100-year floodplain (**Figure H, Appendix B**).

Based on available information, Enterprise estimates the depth to water at the Site to potentially be less than 50 feet bgs based on historical data from a nearby well, resulting in a Tier I ranking. The NM EMNRD OCD Tier I closure criteria include the following:

Tier I Closure Criteria for Soils Impacted by a Release		
Constituent ¹	Method	Limit
Chloride	EPA 300.0 or SM4500 Cl B	600 mg/kg
TPH (GRO+DRO+MRO) ²	EPA SW-846 Method 8015	100 mg/kg
BTEX ³	EPA SW-846 Method 8021 or 8260	50 mg/kg
Benzene	EPA SW-846 Method 8021 or 8260	10 mg/kg

¹ – Constituent concentrations are in milligrams per kilogram (mg/kg).

² – Total Petroleum Hydrocarbons (TPH). Gasoline Range Organics (GRO). Diesel Range Organics (DRO). Motor Oil/Lube Oil Range Organics (MRO).

³ – Benzene, Toluene, Ethylbenzene, and Total Xylenes (BTEX).

3.0 SOIL REMEDIATION ACTIVITIES

On January 13, 2026, Enterprise initiated activities to remediate potential petroleum hydrocarbon impact resulting from the release. During the remediation and corrective action activities, Sunland Construction, Inc. provided heavy equipment and labor support, while Ensolum provided environmental consulting support.

The excavation measured approximately 30 feet long and 18 feet wide at the maximum extents. The calculated surface footprint is approximately 540 ft². The maximum depth of the excavation measured approximately six feet bgs. The lithology encountered during the completion of remediation activities consisted primarily of silty clay and silty sand.

Land farm records indicate approximately 104 cubic yards (yd³) of petroleum hydrocarbon-affected soils were transported to the Envirotech, Inc., (Envirotech) landfarm in San Juan County, NM for disposal/remediation. The executed C-138 solid waste acceptance form is provided in **Appendix C**. The excavation was backfilled with imported fill and then contoured to the surrounding grade.

Figure 3 is a map that identifies approximate soil sample locations and depicts the approximate dimensions of the excavation with respect to the pipeline (**Appendix A**). Photographic documentation of the field activities is included in **Appendix D**.

4.0 SOIL SAMPLING PROGRAM

Ensolum field screened the soil samples from the excavation utilizing a calibrated Dexsil PetroFLAG[®] hydrocarbon analyzer system and a photoionization detector (PID) fitted with a 10.6 eV lamp to guide excavation extents.

Ensolum's soil sampling program included the collection of nine composite soil samples (S-1 through S-9) from the excavation and one composite sample (SP-#3) from the backfill for laboratory analysis. The composite soil samples were comprised of five aliquots each and represent an estimated 200 square foot (ft²) or less sample area per guidelines outlined in Section D of 19.15.29.12 NMAC. The excavator bucket and/or hand tools were utilized to obtain fresh aliquots from each area of the excavation and backfill. Regulatory correspondence is provided in **Appendix E**.

First Sampling Event

On January 16, 2026, sampling was performed at the Site. The NM EMNRD OCD was notified of the sampling event although no representative was present during sampling activities. Composite soil samples S-1 (6'), S-2 (6'), and S-3 (6') were collected from the floor of the excavation.

Composite soil samples S-4 (0'-6') through S-9 (0'-6') were collected from the walls of the excavation.

Second Sampling Event

On January 22, 2026, sampling was performed at the Site. The NM EMNRD OCD was notified of the sampling event although no representative was present during sampling activities. Composite soil sample SP-#3 was collected from imported stockpiled soil.

All soil samples were collected and placed in laboratory-prepared glassware. The containers were labeled and sealed using the laboratory-supplied labels and custody seals and were stored on ice in a cooler. The samples were relinquished to the courier for Eurofins Environment Testing South Central, LLC (Eurofins) of Albuquerque, NM, under proper chain-of-custody procedures.

5.0 SOIL LABORATORY ANALYTICAL METHODS

The composite soil samples were analyzed for BTEX using Environmental Protection Agency (EPA) SW-846 Method 8021; TPH GRO/DRO/MRO using EPA SW-846 Method 8015; and chlorides using EPA Method 300.0.

The laboratory analytical results are summarized in **Table 1 (Appendix F)**. The laboratory data sheets and executed chain-of-custody forms are provided in **Appendix G**.

6.0 SOIL DATA EVALUATION

Ensolum compared the benzene, BTEX, TPH, and chloride laboratory analytical results or laboratory practical quantitation limits (PQLs) / reporting limits (RLs) associated with the composite soil samples (S-1 through S-9, and SP-#3) to the applicable NM EMNRD OCD closure criteria. Due to the high PQLs/RLs associated with the TPH MRO results when using EPA SW-846 Method 8015, Ensolum only compared the quantified TPH results to the NM EMNRD OCD closure criteria. The laboratory analytical results are summarized in **Table 1 (Appendix F)**.

- The laboratory analytical results for the composite soil samples collected from soils remaining at the Site indicate benzene is not present at concentrations greater than the laboratory PQLs/RLs, which are less than the NM EMNRD OCD closure criteria of 10 mg/kg.
- The laboratory analytical results for the composite soil samples collected from soils remaining at the Site indicate that total BTEX is not present at concentrations greater than the laboratory PQLs/RLs, which are less than the NM EMNRD OCD closure criteria of 50 mg/kg.
- The laboratory analytical results for the composite soil samples collected from soils remaining at the Site indicate total combined TPH GRO/DRO/MRO is not present at concentrations greater than the laboratory PQLs/RLs, which are less than the NM EMNRD OCD closure criteria of 100 mg/kg.
- The laboratory analytical results for the composite soil samples collected from soils remaining at the Site indicate chloride is not present at concentrations greater than the laboratory PQLs/RLs, which is less than the NM EMNRD OCD closure criteria of 600 mg/kg.

7.0 RECLAMATION

The excavation was backfilled with imported fill and then contoured to the surrounding grade. The backfill and the upper four feet of the excavation have been analytically verified to be below the Tier I soil standards of 50 mg/kg BTEX, 10 mg/kg benzene, 100 mg/kg total combined TPH, and 600 mg/kg Chloride. See **Appendix D** and **Appendix F** for further documentation.

8.0 REVEGETATION

Revegetation will be addressed in accordance with 19.15.29.13 NMAC utilizing the recommended seed mix as described in the Vegetation Community Descriptions and Seed Mixes provided by the BLM Farmington Field Office. In this case the surrounding vegetation is predominantly of the Sagebrush Vegetation Community. Enterprise will reseed the area with the appropriate seed mix during the next favorable growing season. Enterprise will provide revegetation documentation under separate cover.

9.0 FINDINGS AND RECOMMENDATION

- Nine composite soil samples were collected from the excavation, and one composite soil sample was collected from the backfill prior to placement in the excavation. Based on laboratory analytical results, COCs were not identified in soils remaining at the Site at concentrations exceeding the NM EMNRD OCD closure criteria.
- Land farm records indicate approximately 104 cubic yards (yd³) of petroleum hydrocarbon-affected soils were transported to the Envirotech landfarm in San Juan County, NM for disposal/remediation.

Based on field observations and laboratory analytical results, no additional investigation or corrective action appears warranted at this time.

10.0 STANDARDS OF CARE, LIMITATIONS, AND RELIANCE

10.1 Standard of Care

Ensolum's services were performed in accordance with standards customarily provided by a firm rendering the same or similar services in the area during the same time period. Ensolum makes no warranties, express or implied, as to the services performed hereunder. Additionally, Ensolum does not warrant the work of third parties supplying information used in the report (e.g., laboratories, regulatory agencies, or other third parties).

10.2 Limitations

Findings, conclusions, and recommendations resulting from these services are based upon information derived from the on-Site activities and other services performed under this scope of work, and it should be noted that this information is subject to change over time. Certain indicators of the presence of hazardous substances, petroleum products, or other constituents may have been latent, inaccessible, unobservable, or not present during these services, and Ensolum cannot represent that the Site contains no hazardous substances, toxic materials, petroleum products, or other latent conditions beyond those identified during the investigation.

Environmental conditions at other areas or portions of the Site may vary from those encountered at actual sample locations. Ensolum's findings and recommendation are based solely upon data available to Ensolum at the time of these services.

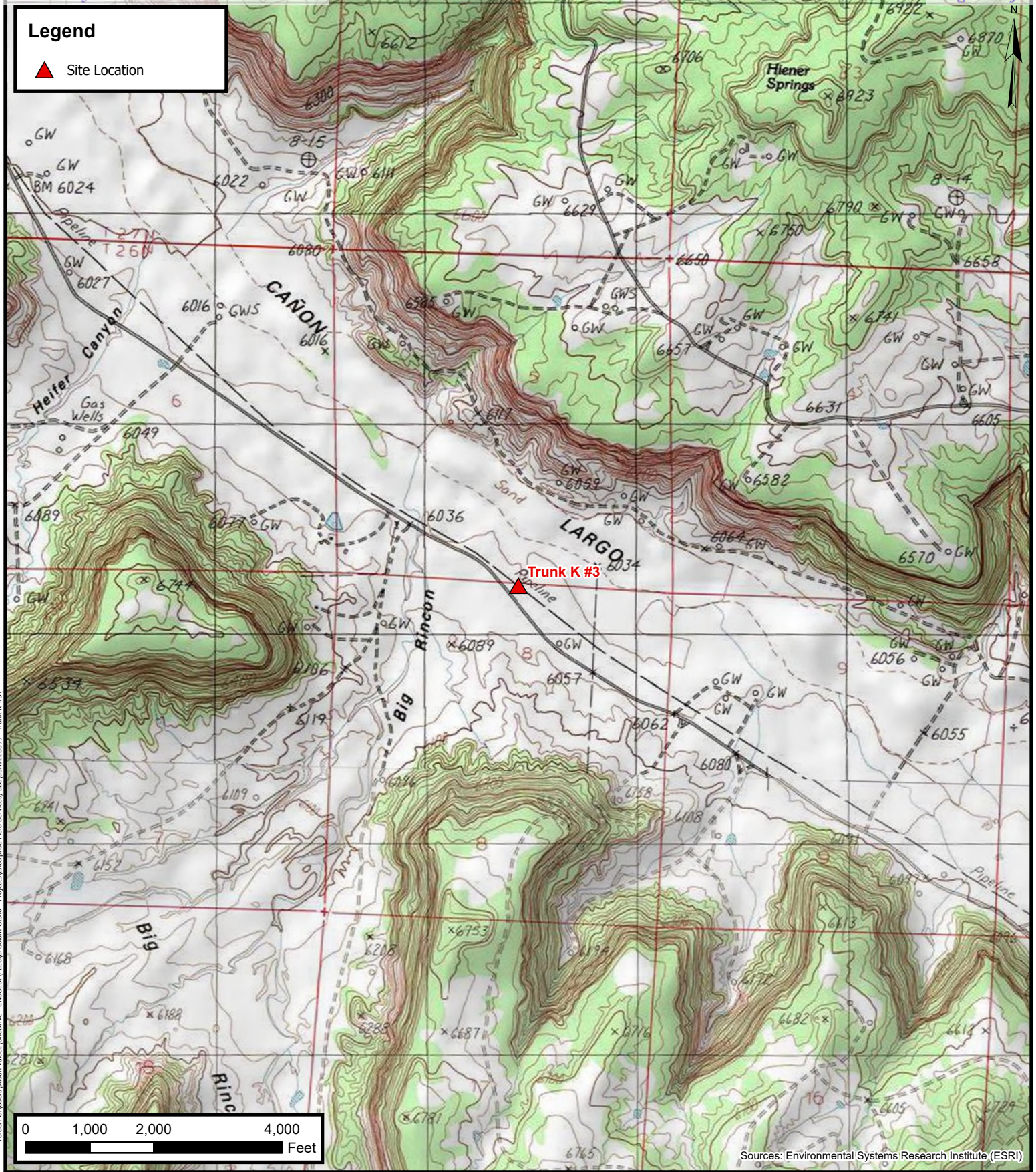
10.3 Reliance

This report has been prepared for the exclusive use of Enterprise, and any authorization for use or reliance by any other party (except a governmental entity having jurisdiction over the Site) is prohibited without the express written authorization of Enterprise and Ensolum. Any unauthorized distribution or reuse is at the client's sole risk. Notwithstanding the foregoing, reliance by authorized parties will be subject to the terms, conditions, and limitations stated in this report and Ensolum's Master Services Agreement. The limitation of liability defined in the agreement is the aggregate limit of Ensolum's liability to the client.



APPENDIX A

Figures



Legend

▲ Site Location

0 1,000 2,000 4,000 Feet

Sources: Environmental Systems Research Institute (ESRI)



Topographic Map

Enterprise Field Services, LLC

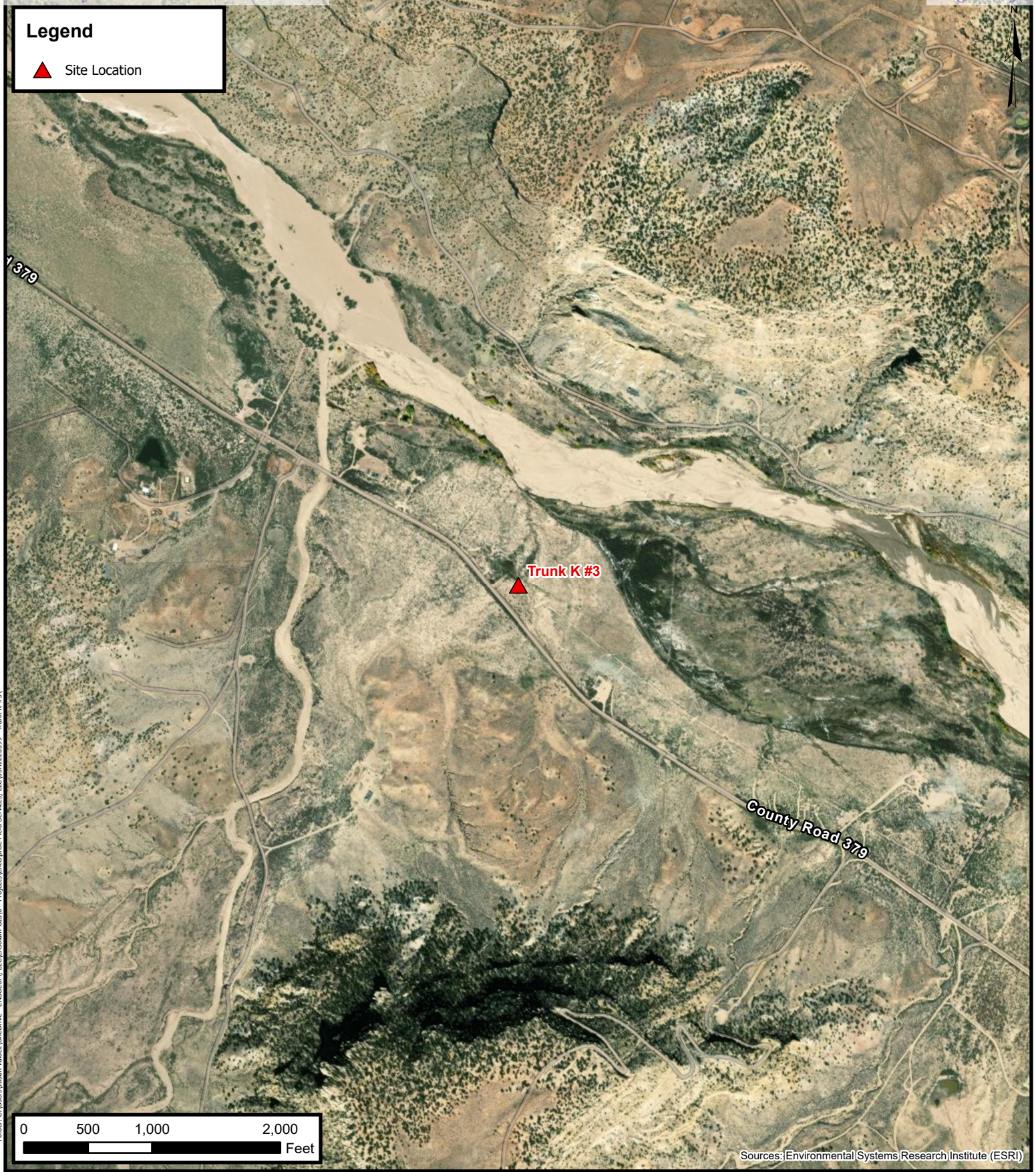
Trunk K #3

Project Number: 05A1226399

Unit B, Section 08, T 26W, R 07N, Rio Arriba County, New Mexico
36.508013, -107.597427

FIGURE

1



Folder: C:\Users\Justin Velazquez\OneDrive - ENSOLUM, LLC\Ensolum GIS\0 - Projects\Enterprise Field Services, LLC\05A1226399 - Trunk K #3



Site Vicinity Map





Enterprise Field Services, LLC
Trunk K #3

Project Number: 05A1226399
Unit B, Section 08, T 26W, R 07N, Rio Arriba County, New Mexico
36.508013, -107.597427

FIGURE

2

Legend

-  Point of Release (POR)
-  Sample Location
-  Pipeline
-  Excavation Extent



S-1
Date: 2026-01-16
Sample Type: C
Location: F
Depth: 6'
Benzene (mg/kg): <0.017
Ethylbenzene (mg/kg): <0.033
Toluene (mg/kg): <0.033
Xylenes (mg/kg): <0.066
Total BTEX (mg/kg): ND
TPH GRO (mg/kg): <3.3
TPH DRO (mg/kg): <9.5
TPH MRO (mg/kg): <47
Combined (mg/kg): ND
Chloride (mg/kg): <50

S-7
Date: 2026-01-16
Sample Type: C
Location: W
Depth: 0-6'
Benzene (mg/kg): <0.017
Ethylbenzene (mg/kg): <0.033
Toluene (mg/kg): <0.033
Xylenes (mg/kg): <0.066
Total BTEX (mg/kg): ND
TPH GRO (mg/kg): <3.3
TPH DRO (mg/kg): <9.8
TPH MRO (mg/kg): <49
Combined (mg/kg): ND
Chloride (mg/kg): <51

S-8
Date: 2026-01-16
Sample Type: C
Location: W
Depth: 0-6'
Benzene (mg/kg): <0.018
Ethylbenzene (mg/kg): <0.036
Toluene (mg/kg): <0.036
Xylenes (mg/kg): <0.071
Total BTEX (mg/kg): ND
TPH GRO (mg/kg): <3.6
TPH DRO (mg/kg): <9.9
TPH MRO (mg/kg): <50
Combined (mg/kg): ND
Chloride (mg/kg): <50

S-9
Date: 2026-01-16
Sample Type: C
Location: W
Depth: 0-6'
Benzene (mg/kg): <0.018
Ethylbenzene (mg/kg): <0.037
Toluene (mg/kg): <0.037
Xylenes (mg/kg): <0.073
Total BTEX (mg/kg): ND
TPH GRO (mg/kg): <3.7
TPH DRO (mg/kg): <9.3
TPH MRO (mg/kg): <46
Combined (mg/kg): ND
Chloride (mg/kg): <49

S-4
Date: 2026-01-16
Sample Type: C
Location: W
Depth: 0-6'
Benzene (mg/kg): <0.026
Ethylbenzene (mg/kg): <0.052
Toluene (mg/kg): <0.052
Xylenes (mg/kg): <0.10
Total BTEX (mg/kg): ND
TPH GRO (mg/kg): <5.2
TPH DRO (mg/kg): <10
TPH MRO (mg/kg): <50
Combined (mg/kg): ND
Chloride (mg/kg): <50

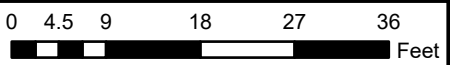
S-6
Date: 2026-01-16
Sample Type: C
Location: W
Depth: 0-6'
Benzene (mg/kg): <0.020
Ethylbenzene (mg/kg): <0.040
Toluene (mg/kg): <0.040
Xylenes (mg/kg): <0.079
Total BTEX (mg/kg): ND
TPH GRO (mg/kg): <4.0
TPH DRO (mg/kg): <9.9
TPH MRO (mg/kg): <49
Combined (mg/kg): ND
Chloride (mg/kg): <50

S-2
Date: 2026-01-16
Sample Type: C
Location: F
Depth: 6'
Benzene (mg/kg): <0.018
Ethylbenzene (mg/kg): <0.036
Toluene (mg/kg): <0.036
Xylenes (mg/kg): <0.071
Total BTEX (mg/kg): ND
TPH GRO (mg/kg): <3.6
TPH DRO (mg/kg): <9.2
TPH MRO (mg/kg): <46
Combined (mg/kg): ND
Chloride (mg/kg): <50

S-5
Date: 2026-01-16
Sample Type: C
Location: W
Depth: 0-6'
Benzene (mg/kg): <0.017
Ethylbenzene (mg/kg): <0.034
Toluene (mg/kg): <0.034
Xylenes (mg/kg): <0.067
Total BTEX (mg/kg): ND
TPH GRO (mg/kg): <3.4
TPH DRO (mg/kg): <9.8
TPH MRO (mg/kg): <49
Combined (mg/kg): ND
Chloride (mg/kg): <50

S-3
Date: 2026-01-16
Sample Type: C
Location: F
Depth: 6'
Benzene (mg/kg): <0.020
Ethylbenzene (mg/kg): <0.040
Toluene (mg/kg): <0.040
Xylenes (mg/kg): <0.080
Total BTEX (mg/kg): ND
TPH GRO (mg/kg): <4.0
TPH DRO (mg/kg): <9.3
TPH MRO (mg/kg): <46
Combined (mg/kg): ND
Chloride (mg/kg): <50

Notes:
Sample ID @ Depth Below Ground Surface.
Samples in bold indicate sample exceeded applicable closure criteria.
Grey text indicate soil sample was removed during excavation activities.



Sources: Environmental Systems Research Institute (ESRI)



Site Map

Enterprise Field Services, LLC
Trunk K #3
Project Number: 05A1226399
Unit B, Section 08, T 26N, R 07W, Rio Arriba County, New Mexico
36.508013, -107.597427

FIGURE

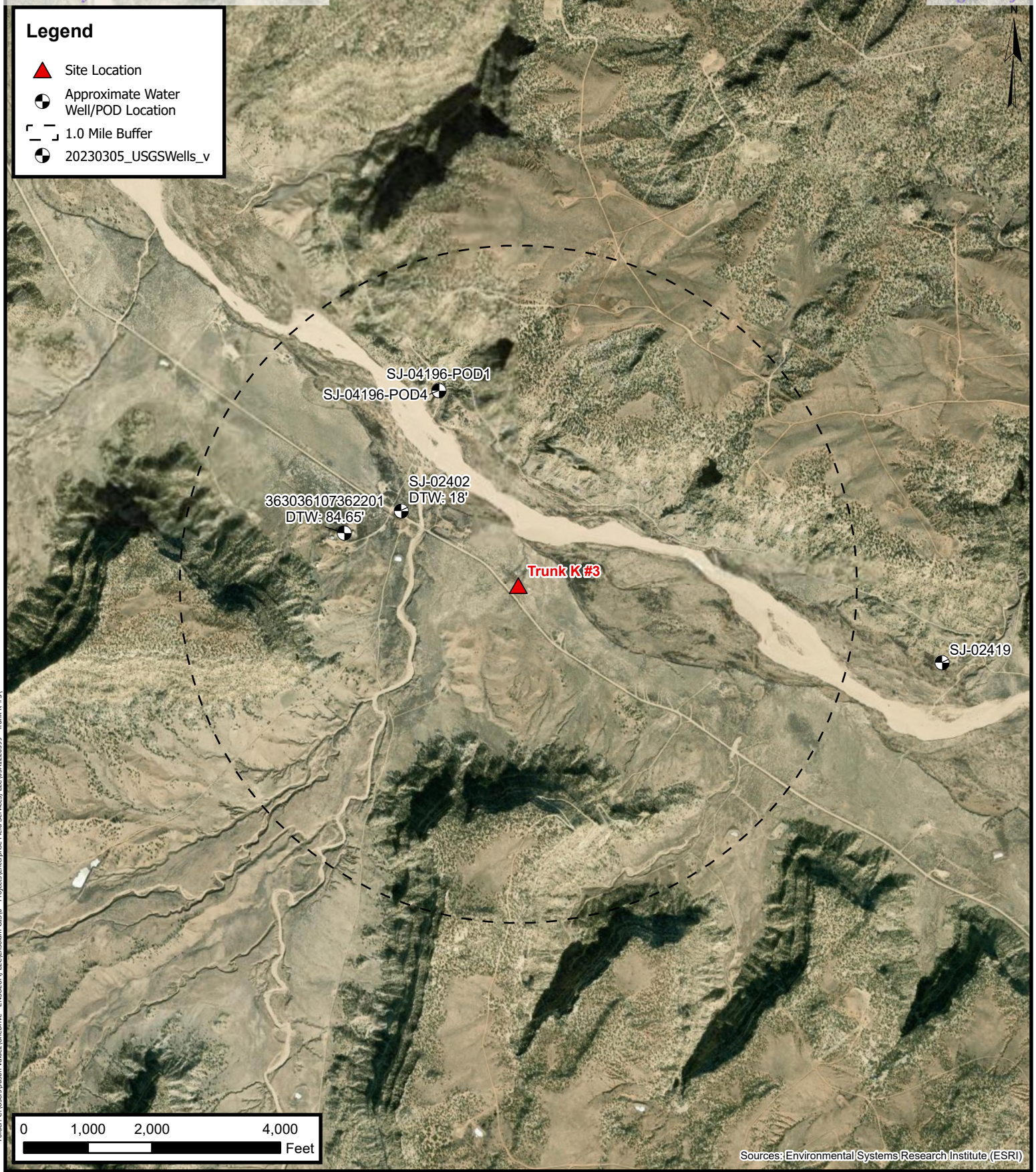
3



APPENDIX B

Siting Figures and Documentation





Legend

- ▲ Site Location
- Approximate Water Well/POD Location
- 1.0 Mile Buffer
- 20230305_USGSWells_v

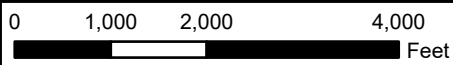
SJ-04196-POD1
SJ-04196-POD4

363036107362201
DTW: 84.65'

SJ-02402
DTW: 18'

▲ Trunk K#3

SJ-02419



Sources: Environmental Systems Research Institute (ESRI)

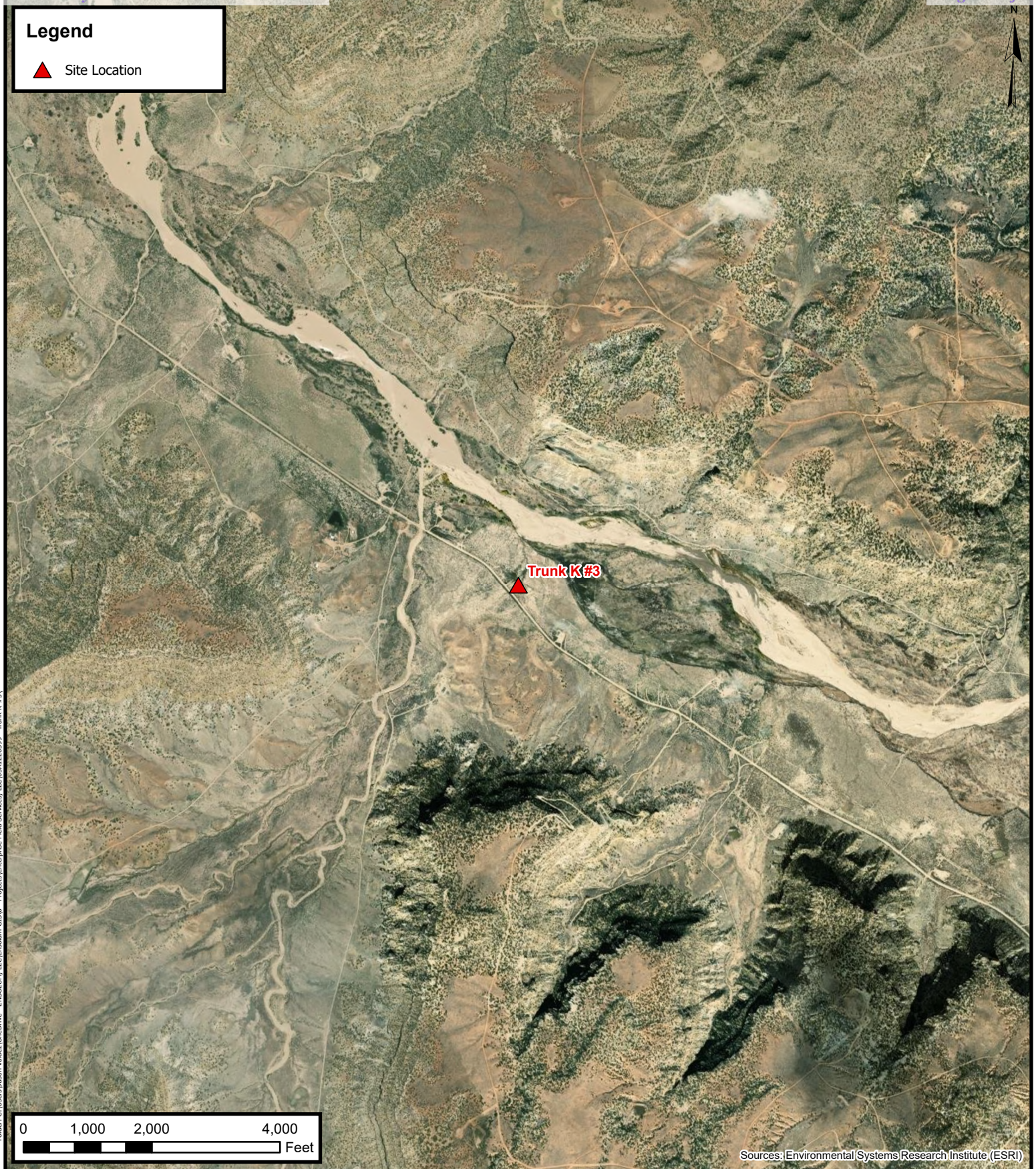


1.0 Mile Radius Water Well/POD Location Map

Enterprise Field Services, LLC
Trunk K #3

Project Number: 05A1226399
Unit B, Section 08, T 26W, R 07N, Rio Arriba County, New Mexico
36.508013, -107.597427

**FIGURE
A**



Folder: C:\Users\Justin Velazquez\OneDrive - ENSOLUM, LLC\Documents\Enterprise Field Services, LLC\05A1226399 - Trunk K #3



Cathodic Protection Well Recorded Depth to Water

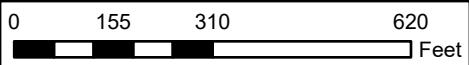
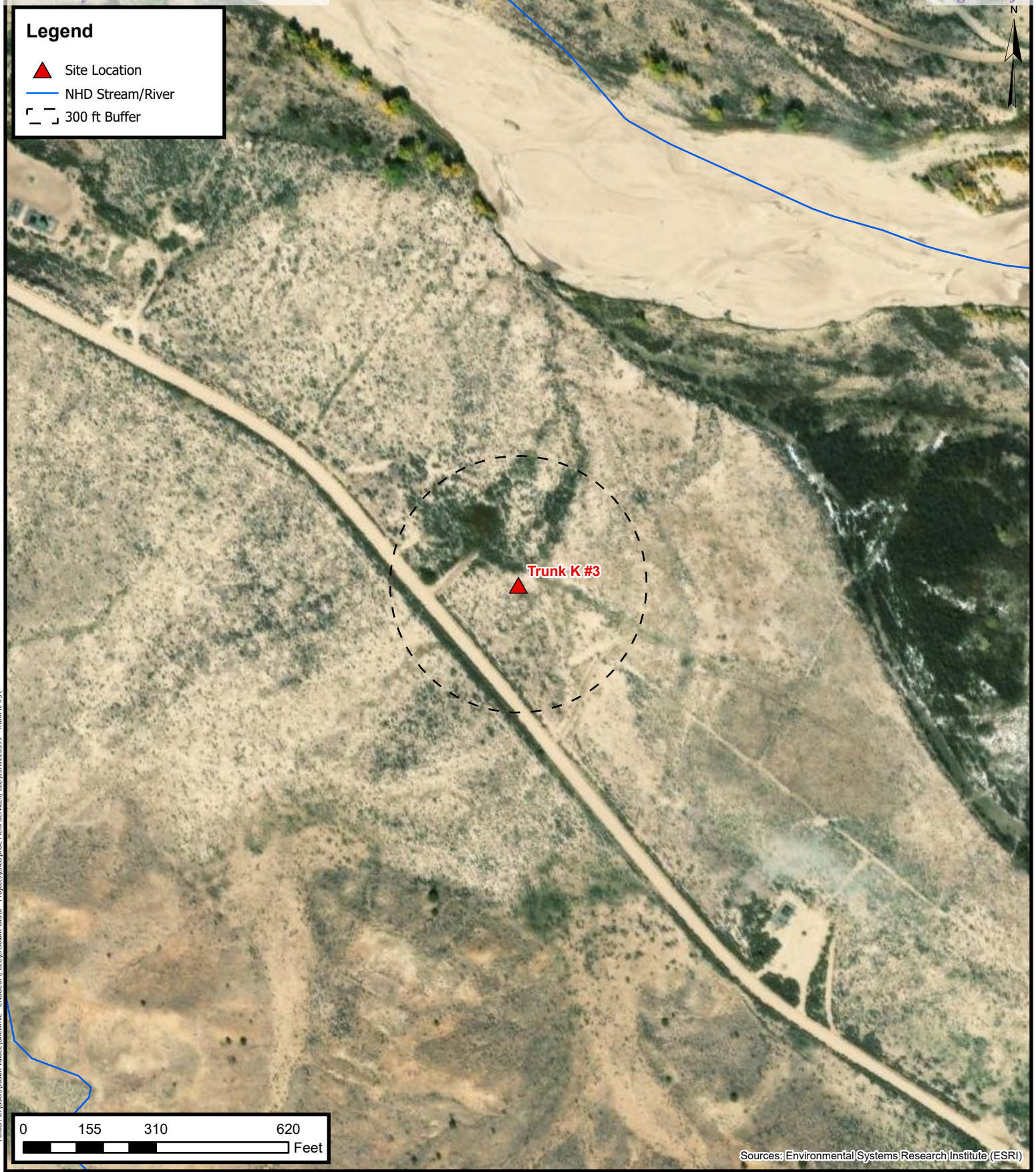
Enterprise Field Services, LLC
Trunk K #3

Project Number: 05A1226399
Unit B, Section 08, T 26W, R 07N, Rio Arriba County, New Mexico
36.508013, -107.597427

**FIGURE
B**

Legend

- ▲ Site Location
- NHD Stream/River
- 300 ft Buffer



Sources: Environmental Systems Research Institute (ESRI)


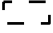


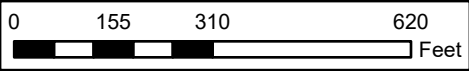
**300 Foot Radius Watercourse
and Drainage Identification**
Enterprise Field Services, LLC
Trunk K #3

Project Number: 05A1226399
Unit B, Section 08, T 26W, R 07N, Rio Arriba County, New Mexico
36.508013, -107.597427

**FIGURE
C**

Legend

-  Site Location
-  300 ft Buffer



Sources: Environmental Systems Research Institute (ESRI)



**300 Foot Radius Occupied
Structure Identification**
Enterprise Field Services, LLC
Trunk K #3

Project Number: 05A1226399
Unit B, Section 08, T 26W, R 07N, Rio Arriba County, New Mexico
36.508013, -107.597427

**FIGURE
D**

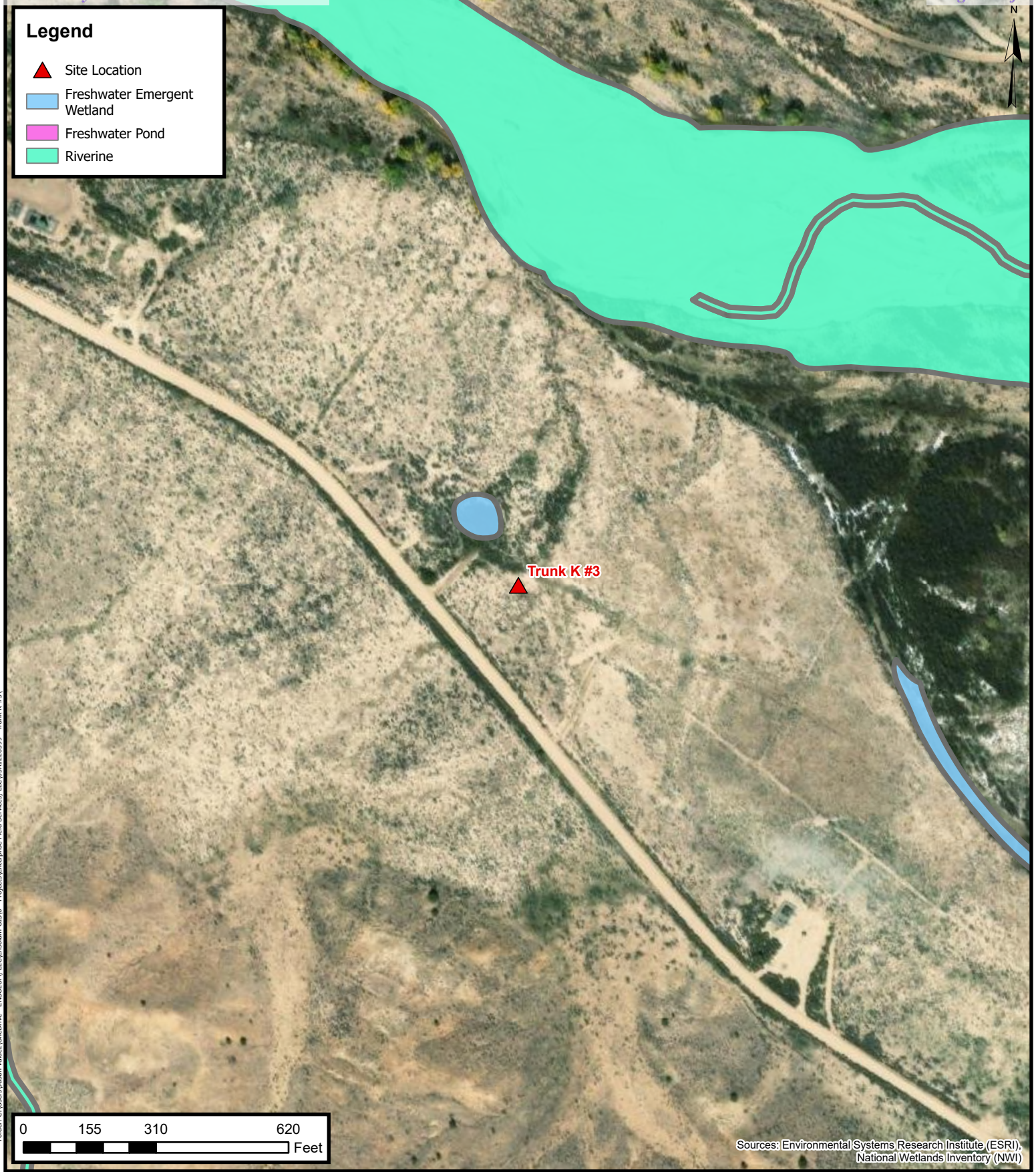


Water Well and Natural Spring Location
 Enterprise Field Services, LLC
 Trunk K #3
 Project Number: 05A1226399
 Unit B, Section 08, T 26W, R 07N, Rio Arriba County, New Mexico
 36.508013, -107.597427

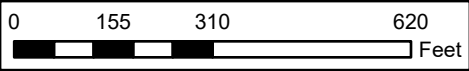
FIGURE E

Legend

-  Site Location
-  Freshwater Emergent Wetland
-  Freshwater Pond
-  Riverine



Trunk K #3



Sources: Environmental Systems Research Institute (ESRI), National Wetlands Inventory (NWI)



Wetlands

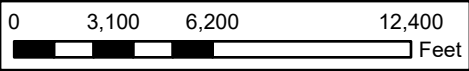
Enterprise Field Services, LLC
Trunk K #3

Project Number: 05A1226399
Unit B, Section 08, T 26W, R 07N, Rio Arriba County, New Mexico
36.508013, -107.597427

FIGURE F

Legend

▲ Site Location



Sources: Environmental Systems Research Institute (ESRI)



Mines, Mills, and Quarries

Enterprise Field Services, LLC

Trunk K #3

Project Number: 05A1226399

Unit B, Section 08, T 26W, R 07N, Rio Arriba County, New Mexico
36.508013, -107.597427

FIGURE G



Folder: C:\Users\Justin Velazquez\OneDrive - ENSOLUM, LLC\Documents\Projects\Enterprise Field Services, LLC\05A1226399 - Trunk K #3

Sources: Environmental Systems Research Institute (ESRI)

ENSOLUM
Environmental, Engineering and
Hydrogeologic Consultants

100-Year Flood Plain Map
Enterprise Field Services, LLC
Trunk K #3
Project Number: 05A1226399
Unit B, Section 08, T 26W, R 07N, Rio Arriba County, New Mexico
36.508013, -107.597427

**FIGURE
H**



New Mexico Office of the State Engineer

Water Column/Average Depth to Water

(A CLW##### in the POD suffix indicates the POD has been replaced & no longer serves a water right file.)

(R=POD has been replaced, O=orphaned, C=the file is closed)

(quarters are smallest to largest)

(In feet)

POD Number	Code	Sub basin	County	Q64	Q16	Q4	Sec	Tws	Range	X	Y	Map	Well Depth	Depth Water	Water Column
SJ 00070		SJ	RA	SW	NE	SE	15	26N	07W	270886.0	4040617.0 *	●	335	22	313
SJ 00071		SJ	RA	NE	NW	SE	15	26N	07W	270686.0	4040839.0 *	●	365	26	339
SJ 02402		SJ	RA	NE	SW	SW	05	26N	07W	266831.0	4043786.0 *	●	36	18	18
SJ 04249 POD1		SJ	RA	NE	NE	SE	15	26N	07W	271102.9	4040887.0	●	14	10	4
SJ 04249 POD10		SJ	RA		SE	NE	15	26N	07W	270891.8	4041001.5	●	21	21	0
SJ 04249 POD11		SJ	RA		SE	NE	15	26N	07W	270901.3	4040993.2	●	21	21	0
SJ 04249 POD12		SJ	RA		SE	NE	15	26N	07W	275378.4	4040885.6	●	21	21	0
SJ 04249 POD13		SJ	RA		SE	NE	15	26N	07W	270891.6	4041012.6	●	21	21	0
SJ 04249 POD14		SJ	RA		SE	NE	15	26N	07W	270883.6	4041022.4	●	21	21	0
SJ 04249 POD15		SJ	RA		SE	NE	15	26N	07W	270873.3	4041017.4	●	21	21	0
SJ 04249 POD2		SJ	RA			SE	15	26N	07W	271101.3	4040890.1	●	14	10	4
SJ 04249 POD3		SJ	RA		SE	NE	15	26N	07W	270877.9	4041013.3	●	27	21	6
SJ 04249 POD4		SJ	RA		SE	NE	15	26N	07W	270887.4	4041005.3	●	27	21	6
SJ 04249 POD5		SJ	RA		SE	NE	15	26N	07W	270896.7	4040998.0	●	27	21	6
SJ 04249 POD53		SJ	RA				15	26N	07W	271068.6	4040867.9	●	20		
SJ 04249 POD54		SJ	RA				15	26N	07W	271099.4	4040894.5	●	20		
SJ 04249 POD6		SJ	RA		SE	NE	15	26N	07W	270894.2	4041007.3	●	27	21	6
SJ 04249 POD7		SJ	RA		SE	NE	15	26N	07W	270887.0	4041016.4	●	27	21	6
SJ 04249 POD8		SJ	RA		SE	NE	15	26N	07W	270878.6	4041020.7	●	27	21	6
SJ 04249 POD9		SJ	RA		SE	NE	15	26N	07W	270882.8	4041009.4	●	21	21	0

Average Depth to Water: **19 feet**

Minimum Depth: **10 feet**

Maximum Depth: **26 feet**

Record Count: 20

Basin/County Search:

Basin: SJ

County: RA

PLSS Search:

Range: 07W

Township: 26N

Section: 3,4,5,8,9,10,15,16,17

* UTM location was derived from PLSS - see Help

The data is furnished by the NMOSE/ISC and is accepted by the recipient with the expressed understanding that the OSE/ISC make no warranties, expressed or implied, concerning the accuracy, completeness, reliability, usability, or suitability for any particular purpose of the data.



APPENDIX C

Executed C-138 Solid Waste Acceptance Form

District I
1625 N. French Dr., Hobbs, NM 88240
District II
1301 W. Grand Avenue, Artesia, NM 88210
District III
1000 Rio Brazos Road, Aztec, NM 87410
District IV
1220 S. St. Francis Dr., Santa Fe, NM 87505

State of New Mexico
Energy Minerals and Natural Resources
Oil Conservation Division
1220 South St. Francis Dr.
Santa Fe, NM 87505

Form C-138
Revised 08/01/11

*Surface Waste Management Facility Operator and Generator shall maintain and make this documentation available for Division inspection.

REQUEST FOR APPROVAL TO ACCEPT SOLID WASTE

1. **Generator Name and Address:**
Enterprise Field Services, LLC, 614 Reilly Ave, Farmington NM 87401

PayKey: AM14058
PM: Johan Huggins
AFE: N85353

2. **Originating Site:**
Trunk K #3

3. **Location of Material (Street Address, City, State or ULSTR):**
UL B Section 8 T26N R7W; 36.508013, -107.597427

4. **Source and Description of Waste:**
Source: Remediation activities associated with a natural gas pipeline leak.
Description: Hydrocarbon/Condensate impacted soil associated natural gas pipeline release.
 Estimated Volume 50 yd³ / bbls Known Volume (to be entered by the operator at the end of the haul) 104 (yd³) bbls

5. GENERATOR CERTIFICATION STATEMENT OF WASTE STATUS

I, Thomas Long *Thomas Long*, representative or authorized agent for Enterprise Products Operating do hereby
Generator Signature
 certify that according to the Resource Conservation and Recovery Act (RCRA) and the US Environmental Protection Agency's July 1988 regulatory determination, the above described waste is: (Check the appropriate classification)

- RCRA Exempt: Oil field wastes generated from oil and gas exploration and production operations and are not mixed with non-exempt waste. **Operator Use Only: Waste Acceptance Frequency** Monthly Weekly Per Load
- RCRA Non-Exempt: Oil field waste which is non-hazardous that does not exceed the minimum standards for waste hazardous by characteristics established in RCRA regulations, 40 CFR 261.21-261.24, or listed hazardous waste as defined in 40 CFR, part 261, subpart D, as amended. The following documentation is attached to demonstrate the above-described waste is non-hazardous. (Check the appropriate items)

- MSDS Information RCRA Hazardous Waste Analysis Process Knowledge Other (Provide description in Box 4)

GENERATOR 19.15.36.15 WASTE TESTING CERTIFICATION STATEMENT FOR LANDFARMS

I, Thomas Long *Thomas Long* 1-8-2026, representative for Enterprise Products Operating authorizes Envirotech, Inc. to complete
Generator Signature
 the required testing/sign the Generator Waste Testing Certification.

I, Greg Crabtree, representative for Envirotech, Inc. do hereby certify that representative samples of the oil field waste have been subjected to the paint filter test and tested for chloride content and that the samples have been found to conform to the specific requirements applicable to landfarms pursuant to Section 15 of 19.15.36 NMAC. The results of the representative samples are attached to demonstrate the above-described waste conform to the requirements of Section 15 of 19.15.36 NMAC.

5. Transporter: Sunland Construction

OCD Permitted Surface Waste Management Facility

Name and Facility Permit #: **Envirotech Inc. Soil Remediation Facility * Permit #: NM 01-0011**
 Address of Facility: **Hilltop, NM**
 Method of Treatment and/or Disposal:
 Evaporation Injection Treating Plant Landfarm Landfill Other

Waste Acceptance Status:
 APPROVED DENIED (Must Be Maintained As Permanent Record)

PRINT NAME: Greg Crabtree TITLE: Enviro Manager DATE: 1/14/26
 SIGNATURE: Greg Crabtree TELEPHONE NO.: 505-632-0615
 Surface Waste Management Facility Authorized Agent



APPENDIX D

Photographic Documentation



SITE PHOTOGRAPHS

Enterprise Field Services, LLC
Closure Report
Trunk K #3 Pipeline Release
Ensolum Project No. 05A1226399



Photograph 1

Photograph Description: View of the final excavation.



Photograph 2

Photograph Description: View of the final excavation after initial restoration.





APPENDIX E

Regulatory Correspondence

From: Buchanan, Michael, EMNRD <Michael.Buchanan@emnrd.nm.gov>
Sent: Thursday, January 22, 2026 3:45 PM
To: Long, Thomas <tjlong@eprod.com>; Velez, Nelson, EMNRD <Nelson.Velez@emnrd.nm.gov>
Cc: Stone, Brian <bmstone@eprod.com>
Subject: RE: [EXTERNAL] NMCOD Incident #nAPP2601447138 (Trunk K #2) and NMOCD Incident # nAPP2601353677 (Trunk K #3)

[Use caution with links/attachments]

Good afternoon, Mr. Long

Resampling both excavation sites will not be necessary. This notification suffices and is documented for the sampling events at both sites. Please be sure and include this email correspondence for the record for incident(s) nAPP2601447138 (Trunk K #2) and NMOCD Incident # nAPP2601353677 (Trunk K #3).

Kind regards,

From: Long, Thomas <tjlong@eprod.com>
Sent: Thursday, January 22, 2026 11:01 AM

To: Velez, Nelson, EMNRD <Nelson.Velez@emnrd.nm.gov>; Buchanan, Michael, EMNRD <Michael.Buchanan@emnrd.nm.gov>
Cc: Stone, Brian <bmstone@eprod.com>
Subject: [EXTERNAL] NMCOD Incident #nAPP2601447138 (Trunk K #2) and NMOCD Incident #nAPP2601353677 (Trunk K #3)

CAUTION: This email originated outside of our organization. Exercise caution prior to clicking on links or opening attachments.

Nelson/Michael,

I want to inquire to see if this is acceptable. Enterprise's third-party consultant, Ensolum, LLC, sampled the following sites, NMCOD Incident #nAPP2601447138 (Trunk K #2) and NMOCD Incident # nAPP2601353677 (Trunk K #3) in reverse.

The sample notifications were the following:

Trunk K #2 (NMOCD Incident # nAPP2601447138) sample notification for 1/16/2026 at 13:15.
Trunk K #3 (NMOCD Incident # nAPP2601353677) sample notification for 1/16/2026 at 10:00 a.m.

In reality, Ensolum sampled Trunk K #2 at 10:00 a.m. and the Trunk K #3 at 13:15, the times in reverse for the notification sent by Enterprise. The two release sites are approximately 375 feet apart. I have attached the lab reports, sample notifications and a map for reference.

Will the NMOCD accept these sample results, or do I need to resample both excavations?

Sincerely,

Thomas J. Long
Senior Environmental Scientist
Enterprise Products Company
614 Reilly Ave.
Farmington, New Mexico 87401
505-599-2286 (office)
505-215-4727 (Cell)
tjlong@eprod.com



This message (including any attachments) is confidential and intended for a specific individual and

purpose. If you are not the intended recipient, please notify the sender immediately and delete this message.

From: Stone, Brian <bmstone@eprod.com>
Sent: Wednesday, January 14, 2026 7:30 AM
To: Long, Thomas <tjlong@eprod.com>
Subject: FW: [EXTERNAL] The Oil Conservation Division (OCD) has accepted the application, Application ID: 542924

From: OCDOnline@emnrd.nm.gov <OCDOnline@emnrd.nm.gov>
Sent: Wednesday, January 14, 2026 7:29 AM
To: Stone, Brian <bmstone@eprod.com>
Subject: [EXTERNAL] The Oil Conservation Division (OCD) has accepted the application, Application ID: 542924

[Use caution with links/attachments]

To whom it may concern (c/o Brian Stone for Enterprise Field Services, LLC),

The OCD has received the submitted *Notification for (Final) Sampling of a Release* (C-141N), for incident ID (n#) nAPP2601353677.

The sampling event is expected to take place:

When: 01/16/2026 @ 10:00

Where: B-08-26N-07W 0 FNL 0 FEL (36.508013,-107.597427)

Additional Information: Ensolum LLC

Additional Instructions: GPS 36.508013,-107.597427

An OCD representative may be available onsite at the date and time reported. In the absence or presence of an OCD representative, sampling pursuant to 19.15.29.12.D NMAC is required. Sampling must be performed following an approved sampling plan or pursuant to 19.15.29.12.D.(1).(c) NMAC. Should there be a change in the scheduled date and time of the sampling event, then another notification should be resubmitted through OCD permitting as soon as possible.

- **Failure to notify the OCD of sampling events including any changes in date/time per the requirements of 19.15.29.12.D.(1).(a) NMAC, may result in the remediation closure samples not being accepted.**
- **If confirmation sampling is going to take place over multiple days, individual C-141N applications must be submitted for each sampling date. Date ranges are not currently accepted on the C-141N application.**

If you have any questions regarding this application, or don't know why you have received this email, please contact us.

New Mexico Energy, Minerals and Natural Resources Department
1220 South St. Francis Drive
Santa Fe, NM 87505

This message (including any attachments) is confidential and intended for a specific individual and purpose. If you are not the intended recipient, please notify the sender immediately and delete this message.

From: OCDOnline@emnrd.nm.gov <OCDOnline@emnrd.nm.gov>
Sent: Tuesday, January 20, 2026 8:24 AM
To: Long, Thomas <tjlong@eprod.com>
Subject: [EXTERNAL] The Oil Conservation Division (OCD) has accepted the application, Application ID: 544460

[Use caution with links/attachments]

To whom it may concern (c/o Thomas Long for Enterprise Field Services, LLC),

The OCD has received the submitted *Notification for (Final) Sampling of a Release (C-141N)*, for incident ID (n#) nAPP2601353677.

The sampling event is expected to take place:

When: 01/22/2026 @ 11:00

Where: B-08-26N-07W 0 FNL 0 FEL (36.508013,-107.597427)

Additional Information: Ensolum LLC

Additional Instructions: 36.508013,-107.597427

An OCD representative may be available onsite at the date and time reported. In the absence or presence of an OCD representative, sampling pursuant to 19.15.29.12.D NMAC is required. Sampling must be performed following an approved sampling plan or pursuant to

19.15.29.12.D.(1).(c) NMAC. Should there be a change in the scheduled date and time of the sampling event, then another notification should be resubmitted through OCD permitting as soon as possible.

- **Failure to notify the OCD of sampling events including any changes in date/time per the requirements of 19.15.29.12.D.(1).(a) NMAC, may result in the remediation closure samples not being accepted.**
- **If confirmation sampling is going to take place over multiple days, individual C-141N applications must be submitted for each sampling date. Date ranges are not currently accepted on the C-141N application.**

If you have any questions regarding this application, or don't know why you have received this email, please contact us.

New Mexico Energy, Minerals and Natural Resources Department
1220 South St. Francis Drive
Santa Fe, NM 87505

This message (including any attachments) is confidential and intended for a specific individual and purpose. If you are not the intended recipient, please notify the sender immediately and delete this message.



APPENDIX F

Table 1 – Soil Analytical Summary



TABLE 1
Trunk K #3
SOIL ANALYTICAL SUMMARY

Sample I.D.	Date	Sample Type	Sample Depth	Benzene	Ethylbenzene	Toluene	Xylenes	Total BTEX ¹	TPH GRO	TPH DRO	TPH MRO	Total Combined TPH (GRO/DRO/MRO) ¹	Chloride
		C- Composite G - Grab	(feet)	(mg/kg)	(mg/kg)	(mg/kg)	(mg/kg)	(mg/kg)	(mg/kg)	(mg/kg)	(mg/kg)	(mg/kg)	(mg/kg)
New Mexico Energy, Mineral & Natural Resources Department Oil Conservation Division Closure Criteria (Tier I)				10	NE	NE	NE	50	NE	NE	NE	100	600
Excavation Composite Soil Samples													
S-1	1.16.26	C	6	<0.017	<0.033	<0.033	<0.066	ND	<3.3	<9.5	<47	ND	<50
S-2	1.16.26	C	6	<0.018	<0.036	<0.036	<0.071	ND	<3.6	<9.2	<46	ND	<50
S-3	1.16.26	C	6	<0.020	<0.040	<0.040	<0.080	ND	<4.0	<9.3	<46	ND	<50
S-4	1.16.26	C	0 to 6	<0.026	<0.052	<0.052	<0.10	ND	<5.2	<10	<50	ND	<50
S-5	1.16.26	C	0 to 6	<0.017	<0.034	<0.034	<0.067	ND	<3.4	<9.8	<49	ND	<50
S-6	1.16.26	C	0 to 6	<0.020	<0.040	<0.040	<0.079	ND	<4.0	<9.9	<49	ND	<50
S-7	1.16.26	C	0 to 6	<0.017	<0.033	<0.033	<0.066	ND	<3.3	<9.8	<49	ND	<51
S-8	1.16.26	C	0 to 6	<0.018	<0.036	<0.036	<0.071	ND	<3.6	<9.9	<50	ND	<50
S-9	1.16.26	C	0 to 6	<0.018	<0.037	<0.037	<0.073	ND	<3.7	<9.3	<46	ND	<49
Stockpile Composite Soil Sample													
SP-#3	1.22.26	C	Stockpille	<0.020	<0.041	<0.041	<0.081	ND	<4.1	<9.7	<49	ND	<51

Note: Concentrations in **bold** and yellow exceed the applicable NM EMNRD Closure Criteria

¹ = Total combined concentrations are rounded to two (2) or three (3) significant figures (depending on which laboratory was used) to match the laboratory resolution of the individual constituents.

ND = Not Detected above the Practical Quantitation Limits (PQLs) or Reporting Limits (RLs)

NE = Not established

mg/kg = milligrams per kilogram

BTEX = Benzene, Toluene, Ethylbenzene, and Xylenes

TPH = Total Petroleum Hydrocarbons

GRO = Gasoline Range Organics

DRO = Diesel Range Organics

MRO = Motor Oil/Lube Oil Range Organics

BF = Backfill sample



APPENDIX G

Laboratory Data Sheets & Chain of Custody Documentation



Environment Testing

- 1
- 2
- 3
- 4
- 5
- 6
- 7
- 8
- 9
- 10
- 11

ANALYTICAL REPORT

PREPARED FOR

Attn: Kyle Summers
 Ensolum
 606 S Rio Grande
 Suite A
 Aztec, New Mexico 87410
 Generated 1/22/2026 9:48:00 AM

JOB DESCRIPTION

Trunk K #3

JOB NUMBER

885-41555-1

Eurofins Albuquerque
 4901 Hawkins NE
 Albuquerque NM 87109



Eurofins Albuquerque

Job Notes

The test results in this report relate only to the samples as received by the laboratory and will meet all requirements of the methodology, with any exceptions noted. This report shall not be reproduced except in full, without the express written approval of the laboratory. All questions should be directed to the Eurofins Environment Testing South Central, LLC Project Manager.

Authorization



Generated
1/22/2026 9:48:00 AM

Authorized for release by
John Caldwell, Project Manager
john.caldwell@et.eurofinsus.com
(505)345-3975

- 1
- 2
- 3
- 4
- 5
- 6
- 7
- 8
- 9
- 10
- 11

Client: Ensolum
Project/Site: Trunk K #3

Laboratory Job ID: 885-41555-1



Table of Contents

Cover Page	1
Table of Contents	3
Definitions/Glossary	4
Case Narrative	5
Client Sample Results	6
QC Sample Results	15
QC Association Summary	18
Lab Chronicle	21
Certification Summary	24
Chain of Custody	25
Receipt Checklists	26

Definitions/Glossary

Client: Ensolum
Project/Site: Trunk K #3

Job ID: 885-41555-1

Glossary

Abbreviation	These commonly used abbreviations may or may not be present in this report.
☼	Listed under the "D" column to designate that the result is reported on a dry weight basis
%R	Percent Recovery
CFL	Contains Free Liquid
CFU	Colony Forming Unit
CNF	Contains No Free Liquid
DER	Duplicate Error Ratio (normalized absolute difference)
Dil Fac	Dilution Factor
DL	Detection Limit (DoD/DOE)
DL, RA, RE, IN	Indicates a Dilution, Re-analysis, Re-extraction, or additional Initial metals/anion analysis of the sample
DLC	Decision Level Concentration (Radiochemistry)
EDL	Estimated Detection Limit (Dioxin)
LOD	Limit of Detection (DoD/DOE)
LOQ	Limit of Quantitation (DoD/DOE)
MCL	EPA recommended "Maximum Contaminant Level"
MDA	Minimum Detectable Activity (Radiochemistry)
MDC	Minimum Detectable Concentration (Radiochemistry)
MDL	Method Detection Limit
ML	Minimum Level (Dioxin)
MPN	Most Probable Number
MQL	Method Quantitation Limit
NC	Not Calculated
ND	Not Detected at the reporting limit (or MDL or EDL if shown)
NEG	Negative / Absent
POS	Positive / Present
PQL	Practical Quantitation Limit
PRES	Presumptive
QC	Quality Control
RER	Relative Error Ratio (Radiochemistry)
RL	Reporting Limit or Requested Limit (Radiochemistry)
RPD	Relative Percent Difference, a measure of the relative difference between two points
TEF	Toxicity Equivalent Factor (Dioxin)
TEQ	Toxicity Equivalent Quotient (Dioxin)
TNTC	Too Numerous To Count

Case Narrative

Client: Ensolum
Project: Trunk K #3

Job ID: 885-41555-1

Job ID: 885-41555-1

Eurofins Albuquerque

Job Narrative 885-41555-1

The analytical test results presented in this report meet all requirements of the associated regulatory program listed on the Accreditation/Certification Summary Page, unless otherwise noted. Data qualifiers and/or narrative comments are included to explain any exceptions, if applicable. Regulated compliance samples (e.g. SDWA, NPDES) must comply with associated agency requirements/permits.

- Matrix-specific batch QC (e.g., MS, MSD, SD) may not be reported when insufficient sample volume is available or when site-specific QC samples are not submitted. In such cases, a Laboratory Control Sample Duplicate (LCSD) may be analyzed to provide precision data for the batch.
- For samples analyzed using surrogate and/or isotope dilution analytes, any recoveries falling outside of established acceptance criteria are re-prepared and/or re-analyzed to confirm results, unless the deviation is due to sample dilution or otherwise explained in the case narrative.

Receipt

The samples were received on 1/17/2026 7:50 AM. Unless otherwise noted below, the samples arrived in good condition, and, where required, properly preserved and on ice. The temperature of the cooler at receipt time was 0.7°C.

Gasoline Range Organics

No additional analytical or quality issues were noted, other than those described above or in the Definitions/ Glossary page.

GC VOA

No additional analytical or quality issues were noted, other than those described above or in the Definitions/ Glossary page.

Diesel Range Organics

No additional analytical or quality issues were noted, other than those described above or in the Definitions/ Glossary page.

HPLC/IC

No additional analytical or quality issues were noted, other than those described above or in the Definitions/ Glossary page.

Eurofins Albuquerque



Client Sample Results

Client: Ensolum
 Project/Site: Trunk K #3

Job ID: 885-41555-1

Client Sample ID: S-1

Lab Sample ID: 885-41555-1

Date Collected: 01/16/26 13:00

Matrix: Solid

Date Received: 01/17/26 07:50

Method: SW846 8015M/D - Gasoline Range Organics (GRO) (GC)

Analyte	Result	Qualifier	RL	Unit	D	Prepared	Analyzed	Dil Fac
Gasoline Range Organics [C6 - C10]	ND		3.3	mg/Kg		01/19/26 07:53	01/19/26 11:33	1
Surrogate	%Recovery	Qualifier	Limits			Prepared	Analyzed	Dil Fac
4-Bromofluorobenzene (Surr)	105		15 - 150			01/19/26 07:53	01/19/26 11:33	1

Method: SW846 8021B - Volatile Organic Compounds (GC)

Analyte	Result	Qualifier	RL	Unit	D	Prepared	Analyzed	Dil Fac
Benzene	ND		0.017	mg/Kg		01/19/26 07:53	01/19/26 11:33	1
Ethylbenzene	ND		0.033	mg/Kg		01/19/26 07:53	01/19/26 11:33	1
Toluene	ND		0.033	mg/Kg		01/19/26 07:53	01/19/26 11:33	1
Xylenes, Total	ND		0.066	mg/Kg		01/19/26 07:53	01/19/26 11:33	1
Surrogate	%Recovery	Qualifier	Limits			Prepared	Analyzed	Dil Fac
4-Bromofluorobenzene (Surr)	87		15 - 150			01/19/26 07:53	01/19/26 11:33	1

Method: SW846 8015M/D - Diesel Range Organics (DRO) (GC)

Analyte	Result	Qualifier	RL	Unit	D	Prepared	Analyzed	Dil Fac
Diesel Range Organics [C10-C28]	ND		9.5	mg/Kg		01/19/26 08:44	01/19/26 12:35	1
Motor Oil Range Organics [C28-C40]	ND		47	mg/Kg		01/19/26 08:44	01/19/26 12:35	1
Surrogate	%Recovery	Qualifier	Limits			Prepared	Analyzed	Dil Fac
Di-n-octyl phthalate (Surr)	89		62 - 134			01/19/26 08:44	01/19/26 12:35	1

Method: EPA 300.0 - Anions, Ion Chromatography

Analyte	Result	Qualifier	RL	Unit	D	Prepared	Analyzed	Dil Fac
Chloride	ND		50	mg/Kg		01/19/26 07:51	01/19/26 10:06	10

Client Sample Results

Client: Ensolum
 Project/Site: Trunk K #3

Job ID: 885-41555-1

Client Sample ID: S-2

Lab Sample ID: 885-41555-2

Date Collected: 01/16/26 13:05

Matrix: Solid

Date Received: 01/17/26 07:50

Method: SW846 8015M/D - Gasoline Range Organics (GRO) (GC)

Analyte	Result	Qualifier	RL	Unit	D	Prepared	Analyzed	Dil Fac
Gasoline Range Organics [C6 - C10]	ND		3.6	mg/Kg		01/19/26 07:53	01/19/26 11:54	1
Surrogate	%Recovery	Qualifier	Limits			Prepared	Analyzed	Dil Fac
4-Bromofluorobenzene (Surr)	105		15 - 150			01/19/26 07:53	01/19/26 11:54	1

Method: SW846 8021B - Volatile Organic Compounds (GC)

Analyte	Result	Qualifier	RL	Unit	D	Prepared	Analyzed	Dil Fac
Benzene	ND		0.018	mg/Kg		01/19/26 07:53	01/19/26 11:54	1
Ethylbenzene	ND		0.036	mg/Kg		01/19/26 07:53	01/19/26 11:54	1
Toluene	ND		0.036	mg/Kg		01/19/26 07:53	01/19/26 11:54	1
Xylenes, Total	ND		0.071	mg/Kg		01/19/26 07:53	01/19/26 11:54	1
Surrogate	%Recovery	Qualifier	Limits			Prepared	Analyzed	Dil Fac
4-Bromofluorobenzene (Surr)	87		15 - 150			01/19/26 07:53	01/19/26 11:54	1

Method: SW846 8015M/D - Diesel Range Organics (DRO) (GC)

Analyte	Result	Qualifier	RL	Unit	D	Prepared	Analyzed	Dil Fac
Diesel Range Organics [C10-C28]	ND		9.2	mg/Kg		01/19/26 08:44	01/19/26 11:01	1
Motor Oil Range Organics [C28-C40]	ND		46	mg/Kg		01/19/26 08:44	01/19/26 11:01	1
Surrogate	%Recovery	Qualifier	Limits			Prepared	Analyzed	Dil Fac
Di-n-octyl phthalate (Surr)	100		62 - 134			01/19/26 08:44	01/19/26 11:01	1

Method: EPA 300.0 - Anions, Ion Chromatography

Analyte	Result	Qualifier	RL	Unit	D	Prepared	Analyzed	Dil Fac
Chloride	ND		50	mg/Kg		01/19/26 07:51	01/19/26 10:17	10

Client Sample Results

Client: Ensolum
Project/Site: Trunk K #3

Job ID: 885-41555-1

Client Sample ID: S-3

Lab Sample ID: 885-41555-3

Date Collected: 01/16/26 13:10

Matrix: Solid

Date Received: 01/17/26 07:50

Method: SW846 8015M/D - Gasoline Range Organics (GRO) (GC)

Analyte	Result	Qualifier	RL	Unit	D	Prepared	Analyzed	Dil Fac
Gasoline Range Organics [C6 - C10]	ND		4.0	mg/Kg		01/19/26 07:53	01/19/26 12:16	1
Surrogate	%Recovery	Qualifier	Limits			Prepared	Analyzed	Dil Fac
4-Bromofluorobenzene (Surr)	104		15 - 150			01/19/26 07:53	01/19/26 12:16	1

Method: SW846 8021B - Volatile Organic Compounds (GC)

Analyte	Result	Qualifier	RL	Unit	D	Prepared	Analyzed	Dil Fac
Benzene	ND		0.020	mg/Kg		01/19/26 07:53	01/19/26 12:16	1
Ethylbenzene	ND		0.040	mg/Kg		01/19/26 07:53	01/19/26 12:16	1
Toluene	ND		0.040	mg/Kg		01/19/26 07:53	01/19/26 12:16	1
Xylenes, Total	ND		0.080	mg/Kg		01/19/26 07:53	01/19/26 12:16	1
Surrogate	%Recovery	Qualifier	Limits			Prepared	Analyzed	Dil Fac
4-Bromofluorobenzene (Surr)	88		15 - 150			01/19/26 07:53	01/19/26 12:16	1

Method: SW846 8015M/D - Diesel Range Organics (DRO) (GC)

Analyte	Result	Qualifier	RL	Unit	D	Prepared	Analyzed	Dil Fac
Diesel Range Organics [C10-C28]	ND		9.3	mg/Kg		01/19/26 08:44	01/19/26 11:12	1
Motor Oil Range Organics [C28-C40]	ND		46	mg/Kg		01/19/26 08:44	01/19/26 11:12	1
Surrogate	%Recovery	Qualifier	Limits			Prepared	Analyzed	Dil Fac
Di-n-octyl phthalate (Surr)	98		62 - 134			01/19/26 08:44	01/19/26 11:12	1

Method: EPA 300.0 - Anions, Ion Chromatography

Analyte	Result	Qualifier	RL	Unit	D	Prepared	Analyzed	Dil Fac
Chloride	ND		50	mg/Kg		01/19/26 07:51	01/19/26 10:27	10

Client Sample Results

Client: Ensolum
Project/Site: Trunk K #3

Job ID: 885-41555-1

Client Sample ID: S-4

Lab Sample ID: 885-41555-4

Date Collected: 01/16/26 13:15

Matrix: Solid

Date Received: 01/17/26 07:50

Method: SW846 8015M/D - Gasoline Range Organics (GRO) (GC)

Analyte	Result	Qualifier	RL	Unit	D	Prepared	Analyzed	Dil Fac
Gasoline Range Organics [C6 - C10]	ND		5.2	mg/Kg		01/19/26 07:53	01/19/26 12:38	1
Surrogate	%Recovery	Qualifier	Limits			Prepared	Analyzed	Dil Fac
4-Bromofluorobenzene (Surr)	105		15 - 150			01/19/26 07:53	01/19/26 12:38	1

Method: SW846 8021B - Volatile Organic Compounds (GC)

Analyte	Result	Qualifier	RL	Unit	D	Prepared	Analyzed	Dil Fac
Benzene	ND		0.026	mg/Kg		01/19/26 07:53	01/19/26 12:38	1
Ethylbenzene	ND		0.052	mg/Kg		01/19/26 07:53	01/19/26 12:38	1
Toluene	ND		0.052	mg/Kg		01/19/26 07:53	01/19/26 12:38	1
Xylenes, Total	ND		0.10	mg/Kg		01/19/26 07:53	01/19/26 12:38	1
Surrogate	%Recovery	Qualifier	Limits			Prepared	Analyzed	Dil Fac
4-Bromofluorobenzene (Surr)	88		15 - 150			01/19/26 07:53	01/19/26 12:38	1

Method: SW846 8015M/D - Diesel Range Organics (DRO) (GC)

Analyte	Result	Qualifier	RL	Unit	D	Prepared	Analyzed	Dil Fac
Diesel Range Organics [C10-C28]	ND		10	mg/Kg		01/19/26 08:44	01/19/26 11:24	1
Motor Oil Range Organics [C28-C40]	ND		50	mg/Kg		01/19/26 08:44	01/19/26 11:24	1
Surrogate	%Recovery	Qualifier	Limits			Prepared	Analyzed	Dil Fac
Di-n-octyl phthalate (Surr)	100		62 - 134			01/19/26 08:44	01/19/26 11:24	1

Method: EPA 300.0 - Anions, Ion Chromatography

Analyte	Result	Qualifier	RL	Unit	D	Prepared	Analyzed	Dil Fac
Chloride	ND		50	mg/Kg		01/19/26 07:51	01/19/26 10:37	10

Client Sample Results

Client: Ensolum
 Project/Site: Trunk K #3

Job ID: 885-41555-1

Client Sample ID: S-5

Lab Sample ID: 885-41555-5

Date Collected: 01/16/26 13:20

Matrix: Solid

Date Received: 01/17/26 07:50

Method: SW846 8015M/D - Gasoline Range Organics (GRO) (GC)

Analyte	Result	Qualifier	RL	Unit	D	Prepared	Analyzed	Dil Fac
Gasoline Range Organics [C6 - C10]	ND		3.4	mg/Kg		01/19/26 07:53	01/19/26 13:00	1
Surrogate	%Recovery	Qualifier	Limits			Prepared	Analyzed	Dil Fac
4-Bromofluorobenzene (Surr)	107		15 - 150			01/19/26 07:53	01/19/26 13:00	1

Method: SW846 8021B - Volatile Organic Compounds (GC)

Analyte	Result	Qualifier	RL	Unit	D	Prepared	Analyzed	Dil Fac
Benzene	ND		0.017	mg/Kg		01/19/26 07:53	01/19/26 13:00	1
Ethylbenzene	ND		0.034	mg/Kg		01/19/26 07:53	01/19/26 13:00	1
Toluene	ND		0.034	mg/Kg		01/19/26 07:53	01/19/26 13:00	1
Xylenes, Total	ND		0.067	mg/Kg		01/19/26 07:53	01/19/26 13:00	1
Surrogate	%Recovery	Qualifier	Limits			Prepared	Analyzed	Dil Fac
4-Bromofluorobenzene (Surr)	89		15 - 150			01/19/26 07:53	01/19/26 13:00	1

Method: SW846 8015M/D - Diesel Range Organics (DRO) (GC)

Analyte	Result	Qualifier	RL	Unit	D	Prepared	Analyzed	Dil Fac
Diesel Range Organics [C10-C28]	ND		9.8	mg/Kg		01/19/26 08:44	01/19/26 11:36	1
Motor Oil Range Organics [C28-C40]	ND		49	mg/Kg		01/19/26 08:44	01/19/26 11:36	1
Surrogate	%Recovery	Qualifier	Limits			Prepared	Analyzed	Dil Fac
Di-n-octyl phthalate (Surr)	93		62 - 134			01/19/26 08:44	01/19/26 11:36	1

Method: EPA 300.0 - Anions, Ion Chromatography

Analyte	Result	Qualifier	RL	Unit	D	Prepared	Analyzed	Dil Fac
Chloride	ND		50	mg/Kg		01/19/26 07:51	01/19/26 10:48	10

Client Sample Results

Client: Ensolum
Project/Site: Trunk K #3

Job ID: 885-41555-1

Client Sample ID: S-6

Lab Sample ID: 885-41555-6

Date Collected: 01/16/26 13:25

Matrix: Solid

Date Received: 01/17/26 07:50

Method: SW846 8015M/D - Gasoline Range Organics (GRO) (GC)

Analyte	Result	Qualifier	RL	Unit	D	Prepared	Analyzed	Dil Fac
Gasoline Range Organics [C6 - C10]	ND		4.0	mg/Kg		01/19/26 07:53	01/19/26 13:21	1
Surrogate	%Recovery	Qualifier	Limits			Prepared	Analyzed	Dil Fac
4-Bromofluorobenzene (Surr)	108		15 - 150			01/19/26 07:53	01/19/26 13:21	1

Method: SW846 8021B - Volatile Organic Compounds (GC)

Analyte	Result	Qualifier	RL	Unit	D	Prepared	Analyzed	Dil Fac
Benzene	ND		0.020	mg/Kg		01/19/26 07:53	01/19/26 13:21	1
Ethylbenzene	ND		0.040	mg/Kg		01/19/26 07:53	01/19/26 13:21	1
Toluene	ND		0.040	mg/Kg		01/19/26 07:53	01/19/26 13:21	1
Xylenes, Total	ND		0.079	mg/Kg		01/19/26 07:53	01/19/26 13:21	1
Surrogate	%Recovery	Qualifier	Limits			Prepared	Analyzed	Dil Fac
4-Bromofluorobenzene (Surr)	90		15 - 150			01/19/26 07:53	01/19/26 13:21	1

Method: SW846 8015M/D - Diesel Range Organics (DRO) (GC)

Analyte	Result	Qualifier	RL	Unit	D	Prepared	Analyzed	Dil Fac
Diesel Range Organics [C10-C28]	ND		9.9	mg/Kg		01/19/26 08:44	01/19/26 11:47	1
Motor Oil Range Organics [C28-C40]	ND		49	mg/Kg		01/19/26 08:44	01/19/26 11:47	1
Surrogate	%Recovery	Qualifier	Limits			Prepared	Analyzed	Dil Fac
Di-n-octyl phthalate (Surr)	98		62 - 134			01/19/26 08:44	01/19/26 11:47	1

Method: EPA 300.0 - Anions, Ion Chromatography

Analyte	Result	Qualifier	RL	Unit	D	Prepared	Analyzed	Dil Fac
Chloride	ND		50	mg/Kg		01/19/26 07:51	01/19/26 10:58	10

Client Sample Results

Client: Ensolum
 Project/Site: Trunk K #3

Job ID: 885-41555-1

Client Sample ID: S-7

Lab Sample ID: 885-41555-7

Date Collected: 01/16/26 13:30

Matrix: Solid

Date Received: 01/17/26 07:50

Method: SW846 8015M/D - Gasoline Range Organics (GRO) (GC)

Analyte	Result	Qualifier	RL	Unit	D	Prepared	Analyzed	Dil Fac
Gasoline Range Organics [C6 - C10]	ND		3.3	mg/Kg		01/19/26 07:53	01/19/26 13:43	1
Surrogate	%Recovery	Qualifier	Limits			Prepared	Analyzed	Dil Fac
4-Bromofluorobenzene (Surr)	106		15 - 150			01/19/26 07:53	01/19/26 13:43	1

Method: SW846 8021B - Volatile Organic Compounds (GC)

Analyte	Result	Qualifier	RL	Unit	D	Prepared	Analyzed	Dil Fac
Benzene	ND		0.017	mg/Kg		01/19/26 07:53	01/19/26 13:43	1
Ethylbenzene	ND		0.033	mg/Kg		01/19/26 07:53	01/19/26 13:43	1
Toluene	ND		0.033	mg/Kg		01/19/26 07:53	01/19/26 13:43	1
Xylenes, Total	ND		0.066	mg/Kg		01/19/26 07:53	01/19/26 13:43	1
Surrogate	%Recovery	Qualifier	Limits			Prepared	Analyzed	Dil Fac
4-Bromofluorobenzene (Surr)	90		15 - 150			01/19/26 07:53	01/19/26 13:43	1

Method: SW846 8015M/D - Diesel Range Organics (DRO) (GC)

Analyte	Result	Qualifier	RL	Unit	D	Prepared	Analyzed	Dil Fac
Diesel Range Organics [C10-C28]	ND		9.8	mg/Kg		01/19/26 08:44	01/19/26 11:59	1
Motor Oil Range Organics [C28-C40]	ND		49	mg/Kg		01/19/26 08:44	01/19/26 11:59	1
Surrogate	%Recovery	Qualifier	Limits			Prepared	Analyzed	Dil Fac
Di-n-octyl phthalate (Surr)	103		62 - 134			01/19/26 08:44	01/19/26 11:59	1

Method: EPA 300.0 - Anions, Ion Chromatography

Analyte	Result	Qualifier	RL	Unit	D	Prepared	Analyzed	Dil Fac
Chloride	ND		51	mg/Kg		01/19/26 07:51	01/19/26 11:29	10

Client Sample Results

Client: Ensolum
 Project/Site: Trunk K #3

Job ID: 885-41555-1

Client Sample ID: S-8

Lab Sample ID: 885-41555-8

Date Collected: 01/16/26 13:35

Matrix: Solid

Date Received: 01/17/26 07:50

Method: SW846 8015M/D - Gasoline Range Organics (GRO) (GC)

Analyte	Result	Qualifier	RL	Unit	D	Prepared	Analyzed	Dil Fac
Gasoline Range Organics [C6 - C10]	ND		3.6	mg/Kg		01/19/26 07:53	01/19/26 14:05	1
Surrogate	%Recovery	Qualifier	Limits			Prepared	Analyzed	Dil Fac
4-Bromofluorobenzene (Surr)	110		15 - 150			01/19/26 07:53	01/19/26 14:05	1

Method: SW846 8021B - Volatile Organic Compounds (GC)

Analyte	Result	Qualifier	RL	Unit	D	Prepared	Analyzed	Dil Fac
Benzene	ND		0.018	mg/Kg		01/19/26 07:53	01/19/26 14:05	1
Ethylbenzene	ND		0.036	mg/Kg		01/19/26 07:53	01/19/26 14:05	1
Toluene	ND		0.036	mg/Kg		01/19/26 07:53	01/19/26 14:05	1
Xylenes, Total	ND		0.071	mg/Kg		01/19/26 07:53	01/19/26 14:05	1
Surrogate	%Recovery	Qualifier	Limits			Prepared	Analyzed	Dil Fac
4-Bromofluorobenzene (Surr)	90		15 - 150			01/19/26 07:53	01/19/26 14:05	1

Method: SW846 8015M/D - Diesel Range Organics (DRO) (GC)

Analyte	Result	Qualifier	RL	Unit	D	Prepared	Analyzed	Dil Fac
Diesel Range Organics [C10-C28]	ND		9.9	mg/Kg		01/19/26 08:44	01/19/26 12:10	1
Motor Oil Range Organics [C28-C40]	ND		50	mg/Kg		01/19/26 08:44	01/19/26 12:10	1
Surrogate	%Recovery	Qualifier	Limits			Prepared	Analyzed	Dil Fac
Di-n-octyl phthalate (Surr)	94		62 - 134			01/19/26 08:44	01/19/26 12:10	1

Method: EPA 300.0 - Anions, Ion Chromatography

Analyte	Result	Qualifier	RL	Unit	D	Prepared	Analyzed	Dil Fac
Chloride	ND		50	mg/Kg		01/19/26 07:51	01/19/26 11:39	10

Client Sample Results

Client: Ensolum
 Project/Site: Trunk K #3

Job ID: 885-41555-1

Client Sample ID: S-9

Lab Sample ID: 885-41555-9

Date Collected: 01/16/26 13:15

Matrix: Solid

Date Received: 01/17/26 07:50

Method: SW846 8015M/D - Gasoline Range Organics (GRO) (GC)

Analyte	Result	Qualifier	RL	Unit	D	Prepared	Analyzed	Dil Fac
Gasoline Range Organics [C6 - C10]	ND		3.7	mg/Kg		01/19/26 07:53	01/19/26 14:27	1
Surrogate	%Recovery	Qualifier	Limits			Prepared	Analyzed	Dil Fac
4-Bromofluorobenzene (Surr)	109		15 - 150			01/19/26 07:53	01/19/26 14:27	1

Method: SW846 8021B - Volatile Organic Compounds (GC)

Analyte	Result	Qualifier	RL	Unit	D	Prepared	Analyzed	Dil Fac
Benzene	ND		0.018	mg/Kg		01/19/26 07:53	01/19/26 14:27	1
Ethylbenzene	ND		0.037	mg/Kg		01/19/26 07:53	01/19/26 14:27	1
Toluene	ND		0.037	mg/Kg		01/19/26 07:53	01/19/26 14:27	1
Xylenes, Total	ND		0.073	mg/Kg		01/19/26 07:53	01/19/26 14:27	1
Surrogate	%Recovery	Qualifier	Limits			Prepared	Analyzed	Dil Fac
4-Bromofluorobenzene (Surr)	91		15 - 150			01/19/26 07:53	01/19/26 14:27	1

Method: SW846 8015M/D - Diesel Range Organics (DRO) (GC)

Analyte	Result	Qualifier	RL	Unit	D	Prepared	Analyzed	Dil Fac
Diesel Range Organics [C10-C28]	ND		9.3	mg/Kg		01/19/26 08:44	01/19/26 11:02	1
Motor Oil Range Organics [C28-C40]	ND		46	mg/Kg		01/19/26 08:44	01/19/26 11:02	1
Surrogate	%Recovery	Qualifier	Limits			Prepared	Analyzed	Dil Fac
Di-n-octyl phthalate (Surr)	88		62 - 134			01/19/26 08:44	01/19/26 11:02	1

Method: EPA 300.0 - Anions, Ion Chromatography

Analyte	Result	Qualifier	RL	Unit	D	Prepared	Analyzed	Dil Fac
Chloride	ND		49	mg/Kg		01/19/26 07:51	01/19/26 11:50	10

QC Sample Results

Client: Ensolum
Project/Site: Trunk K #3

Job ID: 885-41555-1

Method: 8015M/D - Gasoline Range Organics (GRO) (GC)

Lab Sample ID: MB 885-41514/1-A
Matrix: Solid
Analysis Batch: 41526

Client Sample ID: Method Blank
Prep Type: Total/NA
Prep Batch: 41514

Analyte	MB Result	MB Qualifier	RL	Unit	D	Prepared	Analyzed	Dil Fac
Gasoline Range Organics [C6 - C10]	ND		5.0	mg/Kg		01/19/26 07:53	01/19/26 11:11	1
Surrogate	%Recovery	MB Qualifier	Limits			Prepared	Analyzed	Dil Fac
4-Bromofluorobenzene (Surr)	107		15 - 150			01/19/26 07:53	01/19/26 11:11	1

Lab Sample ID: LCS 885-41514/2-A
Matrix: Solid
Analysis Batch: 41526

Client Sample ID: Lab Control Sample
Prep Type: Total/NA
Prep Batch: 41514

Analyte	Spike Added	LCS Result	LCS Qualifier	Unit	D	%Rec	%Rec Limits
Gasoline Range Organics [C6 - C10]	25.0	23.6		mg/Kg		94	70 - 130
Surrogate	LCS %Recovery	LCS Qualifier	Limits				
4-Bromofluorobenzene (Surr)	204		15 - 150				

Method: 8021B - Volatile Organic Compounds (GC)

Lab Sample ID: MB 885-41514/1-A
Matrix: Solid
Analysis Batch: 41527

Client Sample ID: Method Blank
Prep Type: Total/NA
Prep Batch: 41514

Analyte	MB Result	MB Qualifier	RL	Unit	D	Prepared	Analyzed	Dil Fac
Benzene	ND		0.025	mg/Kg		01/19/26 07:53	01/19/26 11:11	1
Ethylbenzene	ND		0.050	mg/Kg		01/19/26 07:53	01/19/26 11:11	1
Toluene	ND		0.050	mg/Kg		01/19/26 07:53	01/19/26 11:11	1
Xylenes, Total	ND		0.10	mg/Kg		01/19/26 07:53	01/19/26 11:11	1
Surrogate	%Recovery	MB Qualifier	Limits			Prepared	Analyzed	Dil Fac
4-Bromofluorobenzene (Surr)	91		15 - 150			01/19/26 07:53	01/19/26 11:11	1

Lab Sample ID: LCS 885-41514/3-A
Matrix: Solid
Analysis Batch: 41527

Client Sample ID: Lab Control Sample
Prep Type: Total/NA
Prep Batch: 41514

Analyte	Spike Added	LCS Result	LCS Qualifier	Unit	D	%Rec	%Rec Limits
Benzene	1.00	0.884		mg/Kg		88	70 - 130
Ethylbenzene	1.00	0.878		mg/Kg		88	70 - 130
Toluene	1.00	0.883		mg/Kg		88	70 - 130
Xylenes, Total	3.00	2.68		mg/Kg		89	70 - 130
Surrogate	LCS %Recovery	LCS Qualifier	Limits				
4-Bromofluorobenzene (Surr)	92		15 - 150				

Eurofins Albuquerque

QC Sample Results

Client: Ensolum
Project/Site: Trunk K #3

Job ID: 885-41555-1

Method: 8015M/D - Diesel Range Organics (DRO) (GC)

Lab Sample ID: MB 885-41522/1-A
Matrix: Solid
Analysis Batch: 41519

Client Sample ID: Method Blank
Prep Type: Total/NA
Prep Batch: 41522

Analyte	MB Result	MB Qualifier	RL	Unit	D	Prepared	Analyzed	Dil Fac
Diesel Range Organics [C10-C28]	ND		10	mg/Kg		01/19/26 08:44	01/19/26 11:01	1
Motor Oil Range Organics [C28-C40]	ND		50	mg/Kg		01/19/26 08:44	01/19/26 11:01	1
Surrogate	MB %Recovery	MB Qualifier	Limits			Prepared	Analyzed	Dil Fac
Di-n-octyl phthalate (Surr)	93		62 - 134			01/19/26 08:44	01/19/26 11:01	1

Lab Sample ID: LCS 885-41522/2-A
Matrix: Solid
Analysis Batch: 41519

Client Sample ID: Lab Control Sample
Prep Type: Total/NA
Prep Batch: 41522

Analyte	Spike Added	LCS Result	LCS Qualifier	Unit	D	%Rec	%Rec Limits
Diesel Range Organics [C10-C28]	50.0	55.8		mg/Kg		112	51 - 148
Surrogate	LCS %Recovery	LCS Qualifier	Limits				
Di-n-octyl phthalate (Surr)	101		62 - 134				

Lab Sample ID: 885-41555-9 MS
Matrix: Solid
Analysis Batch: 41521

Client Sample ID: S-9
Prep Type: Total/NA
Prep Batch: 41522

Analyte	Sample Result	Sample Qualifier	Spike Added	MS Result	MS Qualifier	Unit	D	%Rec	%Rec Limits
Diesel Range Organics [C10-C28]	ND		47.7	47.5		mg/Kg		100	44 - 136
Surrogate	MS %Recovery	MS Qualifier	Limits						
Di-n-octyl phthalate (Surr)	84		62 - 134						

Lab Sample ID: 885-41555-9 MSD
Matrix: Solid
Analysis Batch: 41521

Client Sample ID: S-9
Prep Type: Total/NA
Prep Batch: 41522

Analyte	Sample Result	Sample Qualifier	Spike Added	MSD Result	MSD Qualifier	Unit	D	%Rec	%Rec Limits	RPD	Limit
Diesel Range Organics [C10-C28]	ND		47.3	48.1		mg/Kg		102	44 - 136	1	32
Surrogate	MSD %Recovery	MSD Qualifier	Limits								
Di-n-octyl phthalate (Surr)	87		62 - 134								

Method: 300.0 - Anions, Ion Chromatography

Lab Sample ID: MB 885-41513/1-A
Matrix: Solid
Analysis Batch: 41530

Client Sample ID: Method Blank
Prep Type: Total/NA
Prep Batch: 41513

Analyte	MB Result	MB Qualifier	RL	Unit	D	Prepared	Analyzed	Dil Fac
Chloride	ND		5.0	mg/Kg		01/19/26 07:51	01/19/26 08:45	1

Eurofins Albuquerque

QC Sample Results

Client: Ensolum
Project/Site: Trunk K #3

Job ID: 885-41555-1

Method: 300.0 - Anions, Ion Chromatography (Continued)

Lab Sample ID: LCS 885-41513/2-A
Matrix: Solid
Analysis Batch: 41530

Client Sample ID: Lab Control Sample
Prep Type: Total/NA
Prep Batch: 41513

Analyte	Spike Added	LCS Result	LCS Qualifier	Unit	D	%Rec	%Rec Limits
Chloride	49.8	49.5		mg/Kg		99	90 - 110

- 1
- 2
- 3
- 4
- 5
- 6
- 7
- 8
- 9
- 10
- 11

QC Association Summary

Client: Ensolum
 Project/Site: Trunk K #3

Job ID: 885-41555-1

GC VOA

Prep Batch: 41514

Lab Sample ID	Client Sample ID	Prep Type	Matrix	Method	Prep Batch
885-41555-1	S-1	Total/NA	Solid	5035	
885-41555-2	S-2	Total/NA	Solid	5035	
885-41555-3	S-3	Total/NA	Solid	5035	
885-41555-4	S-4	Total/NA	Solid	5035	
885-41555-5	S-5	Total/NA	Solid	5035	
885-41555-6	S-6	Total/NA	Solid	5035	
885-41555-7	S-7	Total/NA	Solid	5035	
885-41555-8	S-8	Total/NA	Solid	5035	
885-41555-9	S-9	Total/NA	Solid	5035	
MB 885-41514/1-A	Method Blank	Total/NA	Solid	5035	
LCS 885-41514/2-A	Lab Control Sample	Total/NA	Solid	5035	
LCS 885-41514/3-A	Lab Control Sample	Total/NA	Solid	5035	

Analysis Batch: 41526

Lab Sample ID	Client Sample ID	Prep Type	Matrix	Method	Prep Batch
885-41555-1	S-1	Total/NA	Solid	8015M/D	41514
885-41555-2	S-2	Total/NA	Solid	8015M/D	41514
885-41555-3	S-3	Total/NA	Solid	8015M/D	41514
885-41555-4	S-4	Total/NA	Solid	8015M/D	41514
885-41555-5	S-5	Total/NA	Solid	8015M/D	41514
885-41555-6	S-6	Total/NA	Solid	8015M/D	41514
885-41555-7	S-7	Total/NA	Solid	8015M/D	41514
885-41555-8	S-8	Total/NA	Solid	8015M/D	41514
885-41555-9	S-9	Total/NA	Solid	8015M/D	41514
MB 885-41514/1-A	Method Blank	Total/NA	Solid	8015M/D	41514
LCS 885-41514/2-A	Lab Control Sample	Total/NA	Solid	8015M/D	41514

Analysis Batch: 41527

Lab Sample ID	Client Sample ID	Prep Type	Matrix	Method	Prep Batch
885-41555-1	S-1	Total/NA	Solid	8021B	41514
885-41555-2	S-2	Total/NA	Solid	8021B	41514
885-41555-3	S-3	Total/NA	Solid	8021B	41514
885-41555-4	S-4	Total/NA	Solid	8021B	41514
885-41555-5	S-5	Total/NA	Solid	8021B	41514
885-41555-6	S-6	Total/NA	Solid	8021B	41514
885-41555-7	S-7	Total/NA	Solid	8021B	41514
885-41555-8	S-8	Total/NA	Solid	8021B	41514
885-41555-9	S-9	Total/NA	Solid	8021B	41514
MB 885-41514/1-A	Method Blank	Total/NA	Solid	8021B	41514
LCS 885-41514/3-A	Lab Control Sample	Total/NA	Solid	8021B	41514

GC Semi VOA

Analysis Batch: 41519

Lab Sample ID	Client Sample ID	Prep Type	Matrix	Method	Prep Batch
885-41555-1	S-1	Total/NA	Solid	8015M/D	41522
MB 885-41522/1-A	Method Blank	Total/NA	Solid	8015M/D	41522
LCS 885-41522/2-A	Lab Control Sample	Total/NA	Solid	8015M/D	41522

Eurofins Albuquerque

QC Association Summary

Client: Ensolium
Project/Site: Trunk K #3

Job ID: 885-41555-1

GC Semi VOA

Analysis Batch: 41520

Lab Sample ID	Client Sample ID	Prep Type	Matrix	Method	Prep Batch
885-41555-2	S-2	Total/NA	Solid	8015M/D	41522
885-41555-3	S-3	Total/NA	Solid	8015M/D	41522
885-41555-4	S-4	Total/NA	Solid	8015M/D	41522
885-41555-5	S-5	Total/NA	Solid	8015M/D	41522
885-41555-6	S-6	Total/NA	Solid	8015M/D	41522
885-41555-7	S-7	Total/NA	Solid	8015M/D	41522
885-41555-8	S-8	Total/NA	Solid	8015M/D	41522

Analysis Batch: 41521

Lab Sample ID	Client Sample ID	Prep Type	Matrix	Method	Prep Batch
885-41555-9	S-9	Total/NA	Solid	8015M/D	41522
885-41555-9 MS	S-9	Total/NA	Solid	8015M/D	41522
885-41555-9 MSD	S-9	Total/NA	Solid	8015M/D	41522

Prep Batch: 41522

Lab Sample ID	Client Sample ID	Prep Type	Matrix	Method	Prep Batch
885-41555-1	S-1	Total/NA	Solid	SHAKE	
885-41555-2	S-2	Total/NA	Solid	SHAKE	
885-41555-3	S-3	Total/NA	Solid	SHAKE	
885-41555-4	S-4	Total/NA	Solid	SHAKE	
885-41555-5	S-5	Total/NA	Solid	SHAKE	
885-41555-6	S-6	Total/NA	Solid	SHAKE	
885-41555-7	S-7	Total/NA	Solid	SHAKE	
885-41555-8	S-8	Total/NA	Solid	SHAKE	
885-41555-9	S-9	Total/NA	Solid	SHAKE	
MB 885-41522/1-A	Method Blank	Total/NA	Solid	SHAKE	
LCS 885-41522/2-A	Lab Control Sample	Total/NA	Solid	SHAKE	
885-41555-9 MS	S-9	Total/NA	Solid	SHAKE	
885-41555-9 MSD	S-9	Total/NA	Solid	SHAKE	

HPLC/IC

Prep Batch: 41513

Lab Sample ID	Client Sample ID	Prep Type	Matrix	Method	Prep Batch
885-41555-1	S-1	Total/NA	Solid	300_Prep	
885-41555-2	S-2	Total/NA	Solid	300_Prep	
885-41555-3	S-3	Total/NA	Solid	300_Prep	
885-41555-4	S-4	Total/NA	Solid	300_Prep	
885-41555-5	S-5	Total/NA	Solid	300_Prep	
885-41555-6	S-6	Total/NA	Solid	300_Prep	
885-41555-7	S-7	Total/NA	Solid	300_Prep	
885-41555-8	S-8	Total/NA	Solid	300_Prep	
885-41555-9	S-9	Total/NA	Solid	300_Prep	
MB 885-41513/1-A	Method Blank	Total/NA	Solid	300_Prep	
LCS 885-41513/2-A	Lab Control Sample	Total/NA	Solid	300_Prep	

Analysis Batch: 41530

Lab Sample ID	Client Sample ID	Prep Type	Matrix	Method	Prep Batch
885-41555-1	S-1	Total/NA	Solid	300.0	41513
885-41555-2	S-2	Total/NA	Solid	300.0	41513
885-41555-3	S-3	Total/NA	Solid	300.0	41513

Eurofins Albuquerque

QC Association Summary

Client: Ensolum
Project/Site: Trunk K #3

Job ID: 885-41555-1

HPLC/IC (Continued)

Analysis Batch: 41530 (Continued)

Lab Sample ID	Client Sample ID	Prep Type	Matrix	Method	Prep Batch
885-41555-4	S-4	Total/NA	Solid	300.0	41513
885-41555-5	S-5	Total/NA	Solid	300.0	41513
885-41555-6	S-6	Total/NA	Solid	300.0	41513
885-41555-7	S-7	Total/NA	Solid	300.0	41513
885-41555-8	S-8	Total/NA	Solid	300.0	41513
885-41555-9	S-9	Total/NA	Solid	300.0	41513
MB 885-41513/1-A	Method Blank	Total/NA	Solid	300.0	41513
LCS 885-41513/2-A	Lab Control Sample	Total/NA	Solid	300.0	41513



Lab Chronicle

Client: Ensolum
Project/Site: Trunk K #3

Job ID: 885-41555-1

Client Sample ID: S-1

Lab Sample ID: 885-41555-1

Date Collected: 01/16/26 13:00

Matrix: Solid

Date Received: 01/17/26 07:50

Prep Type	Batch Type	Batch Method	Run	Dilution Factor	Batch Number	Batch Analyst	Lab	Prepared or Analyzed
Total/NA	Prep	5035			41514	VP	EET ALB	01/19/26 07:53
Total/NA	Analysis	8015M/D		1	41526	AT	EET ALB	01/19/26 11:33
Total/NA	Prep	5035			41514	VP	EET ALB	01/19/26 07:53
Total/NA	Analysis	8021B		1	41527	AT	EET ALB	01/19/26 11:33
Total/NA	Prep	SHAKE			41522	DR	EET ALB	01/19/26 08:44
Total/NA	Analysis	8015M/D		1	41519	EM	EET ALB	01/19/26 12:35
Total/NA	Prep	300_Prep			41513	JT	EET ALB	01/19/26 07:51
Total/NA	Analysis	300.0		10	41530	KB	EET ALB	01/19/26 10:06

Client Sample ID: S-2

Lab Sample ID: 885-41555-2

Date Collected: 01/16/26 13:05

Matrix: Solid

Date Received: 01/17/26 07:50

Prep Type	Batch Type	Batch Method	Run	Dilution Factor	Batch Number	Batch Analyst	Lab	Prepared or Analyzed
Total/NA	Prep	5035			41514	VP	EET ALB	01/19/26 07:53
Total/NA	Analysis	8015M/D		1	41526	AT	EET ALB	01/19/26 11:54
Total/NA	Prep	5035			41514	VP	EET ALB	01/19/26 07:53
Total/NA	Analysis	8021B		1	41527	AT	EET ALB	01/19/26 11:54
Total/NA	Prep	SHAKE			41522	DR	EET ALB	01/19/26 08:44
Total/NA	Analysis	8015M/D		1	41520	EM	EET ALB	01/19/26 11:01
Total/NA	Prep	300_Prep			41513	JT	EET ALB	01/19/26 07:51
Total/NA	Analysis	300.0		10	41530	KB	EET ALB	01/19/26 10:17

Client Sample ID: S-3

Lab Sample ID: 885-41555-3

Date Collected: 01/16/26 13:10

Matrix: Solid

Date Received: 01/17/26 07:50

Prep Type	Batch Type	Batch Method	Run	Dilution Factor	Batch Number	Batch Analyst	Lab	Prepared or Analyzed
Total/NA	Prep	5035			41514	VP	EET ALB	01/19/26 07:53
Total/NA	Analysis	8015M/D		1	41526	AT	EET ALB	01/19/26 12:16
Total/NA	Prep	5035			41514	VP	EET ALB	01/19/26 07:53
Total/NA	Analysis	8021B		1	41527	AT	EET ALB	01/19/26 12:16
Total/NA	Prep	SHAKE			41522	DR	EET ALB	01/19/26 08:44
Total/NA	Analysis	8015M/D		1	41520	EM	EET ALB	01/19/26 11:12
Total/NA	Prep	300_Prep			41513	JT	EET ALB	01/19/26 07:51
Total/NA	Analysis	300.0		10	41530	KB	EET ALB	01/19/26 10:27

Client Sample ID: S-4

Lab Sample ID: 885-41555-4

Date Collected: 01/16/26 13:15

Matrix: Solid

Date Received: 01/17/26 07:50

Prep Type	Batch Type	Batch Method	Run	Dilution Factor	Batch Number	Batch Analyst	Lab	Prepared or Analyzed
Total/NA	Prep	5035			41514	VP	EET ALB	01/19/26 07:53
Total/NA	Analysis	8015M/D		1	41526	AT	EET ALB	01/19/26 12:38

Eurofins Albuquerque

Lab Chronicle

Client: Ensolum
Project/Site: Trunk K #3

Job ID: 885-41555-1

Client Sample ID: S-4

Lab Sample ID: 885-41555-4

Date Collected: 01/16/26 13:15

Matrix: Solid

Date Received: 01/17/26 07:50

Prep Type	Batch Type	Batch Method	Run	Dilution Factor	Batch Number	Batch Analyst	Lab	Prepared or Analyzed
Total/NA	Prep	5035			41514	VP	EET ALB	01/19/26 07:53
Total/NA	Analysis	8021B		1	41527	AT	EET ALB	01/19/26 12:38
Total/NA	Prep	SHAKE			41522	DR	EET ALB	01/19/26 08:44
Total/NA	Analysis	8015M/D		1	41520	EM	EET ALB	01/19/26 11:24
Total/NA	Prep	300_Prep			41513	JT	EET ALB	01/19/26 07:51
Total/NA	Analysis	300.0		10	41530	KB	EET ALB	01/19/26 10:37

Client Sample ID: S-5

Lab Sample ID: 885-41555-5

Date Collected: 01/16/26 13:20

Matrix: Solid

Date Received: 01/17/26 07:50

Prep Type	Batch Type	Batch Method	Run	Dilution Factor	Batch Number	Batch Analyst	Lab	Prepared or Analyzed
Total/NA	Prep	5035			41514	VP	EET ALB	01/19/26 07:53
Total/NA	Analysis	8015M/D		1	41526	AT	EET ALB	01/19/26 13:00
Total/NA	Prep	5035			41514	VP	EET ALB	01/19/26 07:53
Total/NA	Analysis	8021B		1	41527	AT	EET ALB	01/19/26 13:00
Total/NA	Prep	SHAKE			41522	DR	EET ALB	01/19/26 08:44
Total/NA	Analysis	8015M/D		1	41520	EM	EET ALB	01/19/26 11:36
Total/NA	Prep	300_Prep			41513	JT	EET ALB	01/19/26 07:51
Total/NA	Analysis	300.0		10	41530	KB	EET ALB	01/19/26 10:48

Client Sample ID: S-6

Lab Sample ID: 885-41555-6

Date Collected: 01/16/26 13:25

Matrix: Solid

Date Received: 01/17/26 07:50

Prep Type	Batch Type	Batch Method	Run	Dilution Factor	Batch Number	Batch Analyst	Lab	Prepared or Analyzed
Total/NA	Prep	5035			41514	VP	EET ALB	01/19/26 07:53
Total/NA	Analysis	8015M/D		1	41526	AT	EET ALB	01/19/26 13:21
Total/NA	Prep	5035			41514	VP	EET ALB	01/19/26 07:53
Total/NA	Analysis	8021B		1	41527	AT	EET ALB	01/19/26 13:21
Total/NA	Prep	SHAKE			41522	DR	EET ALB	01/19/26 08:44
Total/NA	Analysis	8015M/D		1	41520	EM	EET ALB	01/19/26 11:47
Total/NA	Prep	300_Prep			41513	JT	EET ALB	01/19/26 07:51
Total/NA	Analysis	300.0		10	41530	KB	EET ALB	01/19/26 10:58

Client Sample ID: S-7

Lab Sample ID: 885-41555-7

Date Collected: 01/16/26 13:30

Matrix: Solid

Date Received: 01/17/26 07:50

Prep Type	Batch Type	Batch Method	Run	Dilution Factor	Batch Number	Batch Analyst	Lab	Prepared or Analyzed
Total/NA	Prep	5035			41514	VP	EET ALB	01/19/26 07:53
Total/NA	Analysis	8015M/D		1	41526	AT	EET ALB	01/19/26 13:43
Total/NA	Prep	5035			41514	VP	EET ALB	01/19/26 07:53
Total/NA	Analysis	8021B		1	41527	AT	EET ALB	01/19/26 13:43

Eurofins Albuquerque

Lab Chronicle

Client: Ensolum
 Project/Site: Trunk K #3

Job ID: 885-41555-1

Client Sample ID: S-7

Lab Sample ID: 885-41555-7

Date Collected: 01/16/26 13:30

Matrix: Solid

Date Received: 01/17/26 07:50

Prep Type	Batch Type	Batch Method	Run	Dilution Factor	Batch Number	Batch Analyst	Lab	Prepared or Analyzed
Total/NA	Prep	SHAKE			41522	DR	EET ALB	01/19/26 08:44
Total/NA	Analysis	8015M/D		1	41520	EM	EET ALB	01/19/26 11:59
Total/NA	Prep	300_Prep			41513	JT	EET ALB	01/19/26 07:51
Total/NA	Analysis	300.0		10	41530	KB	EET ALB	01/19/26 11:29

Client Sample ID: S-8

Lab Sample ID: 885-41555-8

Date Collected: 01/16/26 13:35

Matrix: Solid

Date Received: 01/17/26 07:50

Prep Type	Batch Type	Batch Method	Run	Dilution Factor	Batch Number	Batch Analyst	Lab	Prepared or Analyzed
Total/NA	Prep	5035			41514	VP	EET ALB	01/19/26 07:53
Total/NA	Analysis	8015M/D		1	41526	AT	EET ALB	01/19/26 14:05
Total/NA	Prep	5035			41514	VP	EET ALB	01/19/26 07:53
Total/NA	Analysis	8021B		1	41527	AT	EET ALB	01/19/26 14:05
Total/NA	Prep	SHAKE			41522	DR	EET ALB	01/19/26 08:44
Total/NA	Analysis	8015M/D		1	41520	EM	EET ALB	01/19/26 12:10
Total/NA	Prep	300_Prep			41513	JT	EET ALB	01/19/26 07:51
Total/NA	Analysis	300.0		10	41530	KB	EET ALB	01/19/26 11:39

Client Sample ID: S-9

Lab Sample ID: 885-41555-9

Date Collected: 01/16/26 13:15

Matrix: Solid

Date Received: 01/17/26 07:50

Prep Type	Batch Type	Batch Method	Run	Dilution Factor	Batch Number	Batch Analyst	Lab	Prepared or Analyzed
Total/NA	Prep	5035			41514	VP	EET ALB	01/19/26 07:53
Total/NA	Analysis	8015M/D		1	41526	AT	EET ALB	01/19/26 14:27
Total/NA	Prep	5035			41514	VP	EET ALB	01/19/26 07:53
Total/NA	Analysis	8021B		1	41527	AT	EET ALB	01/19/26 14:27
Total/NA	Prep	SHAKE			41522	DR	EET ALB	01/19/26 08:44
Total/NA	Analysis	8015M/D		1	41521	EM	EET ALB	01/19/26 11:02
Total/NA	Prep	300_Prep			41513	JT	EET ALB	01/19/26 07:51
Total/NA	Analysis	300.0		10	41530	KB	EET ALB	01/19/26 11:50

Laboratory References:

EET ALB = Eurofins Albuquerque, 4901 Hawkins NE, Albuquerque, NM 87109, TEL (505)345-3975

Accreditation/Certification Summary

Client: Ensolum
Project/Site: Trunk K #3

Job ID: 885-41555-1

Laboratory: Eurofins Albuquerque

The accreditations/certifications listed below are applicable to this report.

Authority	Program	Identification Number	Expiration Date
Oregon	NELAP	NM100001	02-25-26

- 1
- 2
- 3
- 4
- 5
- 6
- 7
- 8
- 9
- 10
- 11

Chain-of-Custody Record

Client: Ensolon Turn-Around Time: 1 day
 Standard Rush 5-19-26
 Project Name: Turns R & S
 Project #: Turns R & S
 Project Manager: K Summers
 Sampler: C Dagonis
 On Ice: Yes No
 # of Coolers: 1
 Cooler Temp (including CF): 0.4 + 0.3 = 0.7°C
 Container Type and # 4oz Jar Preservative Type Lead HEAL No. -1
 Date 5/16 Time 13:00 Matrix S Sample Name S-1

QA/QC Package: Level 4 (Full Validation)
 Accreditation: Az Compliance
 NELAC Other
 EDD (Type)

Date 5/16/26 Time 15:00 Relinquished by [Signature]
 Date 5/17/26 Time 17:30 Relinquished by [Signature]
 Received by Tom Long Date 5/17/26 Time 15:00
 Received by Corey Date 5/17/26 Time 7:50



HALL ENVIRONMENTAL ANALYSIS LABORATORY
 www.hallenvironmental.com

4901 Hawkins NE - Albuquerque, NM 8710 895-41555 COC
 Tel. 505-345-3975 Fax 505-345-4107

Analysis Request	
BTEX / MIBK / TMBs (8021)	<input checked="" type="checkbox"/>
TPH:8015D(GRO / DRO / MRO)	<input checked="" type="checkbox"/>
8081 Pesticides/8082 PCB's	<input checked="" type="checkbox"/>
EDB (Method 504.1)	<input checked="" type="checkbox"/>
PAHs by 8310 or 8270SIMS	<input checked="" type="checkbox"/>
RCRA 8 Metals	<input checked="" type="checkbox"/>
8260 (VOA)	<input checked="" type="checkbox"/>
8270 (Semi-VOA)	<input checked="" type="checkbox"/>
Total Coliform (Present/Absent)	<input checked="" type="checkbox"/>

Remarks: Tom Long
RP 21200
Sant

If necessary, samples submitted to Hall Environmental may be subcontracted to other accredited laboratories. This serves as notice of this possibility. Any sub-contracted data will be clearly notated on the analytical report.

Login Sample Receipt Checklist

Client: Ensolum

Job Number: 885-41555-1

Login Number: 41555

List Source: Eurofins Albuquerque

List Number: 1

Creator: Proctor, Nancy

Question	Answer	Comment
The cooler's custody seal, if present, is intact.	True	
Sample custody seals, if present, are intact.	True	
The cooler or samples do not appear to have been compromised or tampered with.	True	
Samples were received on ice.	True	
Cooler Temperature is acceptable.	True	
Cooler Temperature is recorded.	True	
COC is present.	True	
COC is filled out in ink and legible.	True	
COC is filled out with all pertinent information.	True	
Is the Field Sampler's name present on COC?	True	
There are no discrepancies between the containers received and the COC.	True	
Samples are received within Holding Time (excluding tests with immediate HTs)	True	
Sample containers have legible labels.	True	
Containers are not broken or leaking.	True	
Sample collection date/times are provided.	True	
Appropriate sample containers are used.	True	
Sample bottles are completely filled.	True	
Sample Preservation Verified.	N/A	
There is sufficient vol. for all requested analyses, incl. any requested MS/MSDs	True	
Containers requiring zero headspace have no headspace or bubble is <6mm (1/4").	True	





Environment Testing

- 1
- 2
- 3
- 4
- 5
- 6
- 7
- 8
- 9
- 10
- 11

ANALYTICAL REPORT

PREPARED FOR

Attn: Kyle Summers
 Ensolum
 606 S Rio Grande
 Suite A
 Aztec, New Mexico 87410
 Generated 1/28/2026 3:59:29 PM

JOB DESCRIPTION

Trunk K #3

JOB NUMBER

885-41880-1



Eurofins Albuquerque

Job Notes

The test results in this report relate only to the samples as received by the laboratory and will meet all requirements of the methodology, with any exceptions noted. This report shall not be reproduced except in full, without the express written approval of the laboratory. All questions should be directed to the Eurofins Environment Testing South Central, LLC Project Manager.

Authorization



Generated
1/28/2026 3:59:29 PM

Authorized for release by
John Caldwell, Project Manager
john.caldwell@et.eurofinsus.com
(505)345-3975

Client: Ensolum
Project/Site: Trunk K #3

Laboratory Job ID: 885-41880-1



Table of Contents

Cover Page	1
Table of Contents	3
Definitions/Glossary	4
Case Narrative	5
Client Sample Results	6
QC Sample Results	7
QC Association Summary	10
Lab Chronicle	11
Certification Summary	12
Chain of Custody	13
Receipt Checklists	14

Definitions/Glossary

Client: Ensolum
Project/Site: Trunk K #3

Job ID: 885-41880-1

Glossary

Abbreviation	These commonly used abbreviations may or may not be present in this report.
☼	Listed under the "D" column to designate that the result is reported on a dry weight basis
%R	Percent Recovery
CFL	Contains Free Liquid
CFU	Colony Forming Unit
CNF	Contains No Free Liquid
DER	Duplicate Error Ratio (normalized absolute difference)
Dil Fac	Dilution Factor
DL	Detection Limit (DoD/DOE)
DL, RA, RE, IN	Indicates a Dilution, Re-analysis, Re-extraction, or additional Initial metals/anion analysis of the sample
DLC	Decision Level Concentration (Radiochemistry)
EDL	Estimated Detection Limit (Dioxin)
LOD	Limit of Detection (DoD/DOE)
LOQ	Limit of Quantitation (DoD/DOE)
MCL	EPA recommended "Maximum Contaminant Level"
MDA	Minimum Detectable Activity (Radiochemistry)
MDC	Minimum Detectable Concentration (Radiochemistry)
MDL	Method Detection Limit
ML	Minimum Level (Dioxin)
MPN	Most Probable Number
MQL	Method Quantitation Limit
NC	Not Calculated
ND	Not Detected at the reporting limit (or MDL or EDL if shown)
NEG	Negative / Absent
POS	Positive / Present
PQL	Practical Quantitation Limit
PRES	Presumptive
QC	Quality Control
RER	Relative Error Ratio (Radiochemistry)
RL	Reporting Limit or Requested Limit (Radiochemistry)
RPD	Relative Percent Difference, a measure of the relative difference between two points
TEF	Toxicity Equivalent Factor (Dioxin)
TEQ	Toxicity Equivalent Quotient (Dioxin)
TNTC	Too Numerous To Count

Case Narrative

Client: Ensolum
Project: Trunk K #3

Job ID: 885-41880-1

Job ID: 885-41880-1

Eurofins Albuquerque

Job Narrative 885-41880-1

The analytical test results presented in this report meet all requirements of the associated regulatory program listed on the Accreditation/Certification Summary Page, unless otherwise noted. Data qualifiers and/or narrative comments are included to explain any exceptions, if applicable. Regulated compliance samples (e.g. SDWA, NPDES) must comply with associated agency requirements/permits.

- Matrix-specific batch QC (e.g., MS, MSD, SD) may not be reported when insufficient sample volume is available or when site-specific QC samples are not submitted. In such cases, a Laboratory Control Sample Duplicate (LCSD) may be analyzed to provide precision data for the batch.
- For samples analyzed using surrogate and/or isotope dilution analytes, any recoveries falling outside of established acceptance criteria are re-prepared and/or re-analyzed to confirm results, unless the deviation is due to sample dilution or otherwise explained in the case narrative.

Receipt

The sample was received on 1/23/2026 7:05 AM. Unless otherwise noted below, the sample arrived in good condition, and, where required, properly preserved and on ice. The temperature of the cooler at receipt time was 0.7°C.

Gasoline Range Organics

No additional analytical or quality issues were noted, other than those described above or in the Definitions/ Glossary page.

GC VOA

No additional analytical or quality issues were noted, other than those described above or in the Definitions/ Glossary page.

Diesel Range Organics

No additional analytical or quality issues were noted, other than those described above or in the Definitions/ Glossary page.

HPLC/IC

No additional analytical or quality issues were noted, other than those described above or in the Definitions/ Glossary page.

Eurofins Albuquerque



Client Sample Results

Client: Ensolum
Project/Site: Trunk K #3

Job ID: 885-41880-1

Client Sample ID: SP-#3

Lab Sample ID: 885-41880-1

Date Collected: 01/22/26 11:00

Matrix: Solid

Date Received: 01/23/26 07:05

Method: SW846 8015M/D - Gasoline Range Organics (GRO) (GC)

Analyte	Result	Qualifier	RL	Unit	D	Prepared	Analyzed	Dil Fac
Gasoline Range Organics [C6 - C10]	ND		4.1	mg/Kg		01/23/26 07:55	01/23/26 11:49	1
Surrogate	%Recovery	Qualifier	Limits			Prepared	Analyzed	Dil Fac
4-Bromofluorobenzene (Surr)	97		15 - 150			01/23/26 07:55	01/23/26 11:49	1

Method: SW846 8021B - Volatile Organic Compounds (GC)

Analyte	Result	Qualifier	RL	Unit	D	Prepared	Analyzed	Dil Fac
Benzene	ND		0.020	mg/Kg		01/23/26 07:55	01/23/26 11:49	1
Ethylbenzene	ND		0.041	mg/Kg		01/23/26 07:55	01/23/26 11:49	1
Toluene	ND		0.041	mg/Kg		01/23/26 07:55	01/23/26 11:49	1
Xylenes, Total	ND		0.081	mg/Kg		01/23/26 07:55	01/23/26 11:49	1
Surrogate	%Recovery	Qualifier	Limits			Prepared	Analyzed	Dil Fac
4-Bromofluorobenzene (Surr)	90		15 - 150			01/23/26 07:55	01/23/26 11:49	1

Method: SW846 8015M/D - Diesel Range Organics (DRO) (GC)

Analyte	Result	Qualifier	RL	Unit	D	Prepared	Analyzed	Dil Fac
Diesel Range Organics [C10-C28]	ND		9.7	mg/Kg		01/23/26 08:11	01/23/26 10:26	1
Motor Oil Range Organics [C28-C40]	ND		49	mg/Kg		01/23/26 08:11	01/23/26 10:26	1
Surrogate	%Recovery	Qualifier	Limits			Prepared	Analyzed	Dil Fac
Di-n-octyl phthalate (Surr)	83		62 - 134			01/23/26 08:11	01/23/26 10:26	1

Method: EPA 300.0 - Anions, Ion Chromatography

Analyte	Result	Qualifier	RL	Unit	D	Prepared	Analyzed	Dil Fac
Chloride	ND		51	mg/Kg		01/23/26 10:08	01/23/26 12:56	10

QC Sample Results

Client: Ensolum
Project/Site: Trunk K #3

Job ID: 885-41880-1

Method: 8015M/D - Gasoline Range Organics (GRO) (GC)

Lab Sample ID: MB 885-41849/1-A
Matrix: Solid
Analysis Batch: 41854

Client Sample ID: Method Blank
Prep Type: Total/NA
Prep Batch: 41849

Analyte	MB Result	MB Qualifier	RL	Unit	D	Prepared	Analyzed	Dil Fac
Gasoline Range Organics [C6 - C10]	ND		5.0	mg/Kg		01/23/26 07:55	01/23/26 09:27	1
Surrogate	%Recovery	MB Qualifier	Limits			Prepared	Analyzed	Dil Fac
4-Bromofluorobenzene (Surr)	98		15 - 150			01/23/26 07:55	01/23/26 09:27	1

Lab Sample ID: LCS 885-41849/2-A
Matrix: Solid
Analysis Batch: 41854

Client Sample ID: Lab Control Sample
Prep Type: Total/NA
Prep Batch: 41849

Analyte	Spike Added	LCS Result	LCS Qualifier	Unit	D	%Rec	%Rec Limits	
Gasoline Range Organics [C6 - C10]	25.0	26.5		mg/Kg		106	70 - 130	
Surrogate	LCS %Recovery	LCS Qualifier	Limits					
4-Bromofluorobenzene (Surr)	198		15 - 150					

Method: 8021B - Volatile Organic Compounds (GC)

Lab Sample ID: MB 885-41849/1-A
Matrix: Solid
Analysis Batch: 41855

Client Sample ID: Method Blank
Prep Type: Total/NA
Prep Batch: 41849

Analyte	MB Result	MB Qualifier	RL	Unit	D	Prepared	Analyzed	Dil Fac
Benzene	ND		0.025	mg/Kg		01/23/26 07:55	01/23/26 09:27	1
Ethylbenzene	ND		0.050	mg/Kg		01/23/26 07:55	01/23/26 09:27	1
Toluene	ND		0.050	mg/Kg		01/23/26 07:55	01/23/26 09:27	1
Xylenes, Total	ND		0.10	mg/Kg		01/23/26 07:55	01/23/26 09:27	1
Surrogate	%Recovery	MB Qualifier	Limits			Prepared	Analyzed	Dil Fac
4-Bromofluorobenzene (Surr)	90		15 - 150			01/23/26 07:55	01/23/26 09:27	1

Lab Sample ID: LCS 885-41849/3-A
Matrix: Solid
Analysis Batch: 41855

Client Sample ID: Lab Control Sample
Prep Type: Total/NA
Prep Batch: 41849

Analyte	Spike Added	LCS Result	LCS Qualifier	Unit	D	%Rec	%Rec Limits	
Benzene	1.00	1.01		mg/Kg		101	70 - 130	
Ethylbenzene	1.00	1.02		mg/Kg		102	70 - 130	
Toluene	1.00	1.03		mg/Kg		103	70 - 130	
Xylenes, Total	3.00	3.11		mg/Kg		104	70 - 130	
Surrogate	LCS %Recovery	LCS Qualifier	Limits					
4-Bromofluorobenzene (Surr)	96		15 - 150					

Eurofins Albuquerque

QC Sample Results

Client: Ensolum
Project/Site: Trunk K #3

Job ID: 885-41880-1

Method: 8015M/D - Diesel Range Organics (DRO) (GC)

Lab Sample ID: MB 885-41852/1-A
Matrix: Solid
Analysis Batch: 41857

Client Sample ID: Method Blank
Prep Type: Total/NA
Prep Batch: 41852

Analyte	MB Result	MB Qualifier	RL	Unit	D	Prepared	Analyzed	Dil Fac
Diesel Range Organics [C10-C28]	ND		10	mg/Kg		01/23/26 08:11	01/23/26 09:50	1
Motor Oil Range Organics [C28-C40]	ND		50	mg/Kg		01/23/26 08:11	01/23/26 09:50	1
Surrogate	MB %Recovery	MB Qualifier	Limits			Prepared	Analyzed	Dil Fac
Di-n-octyl phthalate (Surr)	110		62 - 134			01/23/26 08:11	01/23/26 09:50	1

Lab Sample ID: LCS 885-41852/2-A
Matrix: Solid
Analysis Batch: 41857

Client Sample ID: Lab Control Sample
Prep Type: Total/NA
Prep Batch: 41852

Analyte	Spike Added	LCS Result	LCS Qualifier	Unit	D	%Rec	%Rec Limits
Diesel Range Organics [C10-C28]	50.0	41.0		mg/Kg		82	51 - 148
Surrogate	LCS %Recovery	LCS Qualifier	Limits				
Di-n-octyl phthalate (Surr)	103		62 - 134				

Lab Sample ID: 885-41880-1 MS
Matrix: Solid
Analysis Batch: 41860

Client Sample ID: SP-#3
Prep Type: Total/NA
Prep Batch: 41852

Analyte	Sample Result	Sample Qualifier	Spike Added	MS Result	MS Qualifier	Unit	D	%Rec	%Rec Limits
Diesel Range Organics [C10-C28]	ND		48.9	37.9		mg/Kg		59	44 - 136
Surrogate	MS %Recovery	MS Qualifier	Limits						
Di-n-octyl phthalate (Surr)	77		62 - 134						

Lab Sample ID: 885-41880-1 MSD
Matrix: Solid
Analysis Batch: 41860

Client Sample ID: SP-#3
Prep Type: Total/NA
Prep Batch: 41852

Analyte	Sample Result	Sample Qualifier	Spike Added	MSD Result	MSD Qualifier	Unit	D	%Rec	%Rec Limits	RPD	Limit
Diesel Range Organics [C10-C28]	ND		47.9	37.3		mg/Kg		59	44 - 136	2	32
Surrogate	MSD %Recovery	MSD Qualifier	Limits								
Di-n-octyl phthalate (Surr)	85		62 - 134								

Method: 300.0 - Anions, Ion Chromatography

Lab Sample ID: MB 885-41870/1-A
Matrix: Solid
Analysis Batch: 41875

Client Sample ID: Method Blank
Prep Type: Total/NA
Prep Batch: 41870

Analyte	MB Result	MB Qualifier	RL	Unit	D	Prepared	Analyzed	Dil Fac
Chloride	ND		5.1	mg/Kg		01/23/26 10:08	01/23/26 11:17	1

Eurofins Albuquerque

QC Sample Results

Client: Ensolum
Project/Site: Trunk K #3

Job ID: 885-41880-1

Method: 300.0 - Anions, Ion Chromatography (Continued)

Lab Sample ID: LCS 885-41870/2-A
Matrix: Solid
Analysis Batch: 41875

Client Sample ID: Lab Control Sample
Prep Type: Total/NA
Prep Batch: 41870

Analyte	Spike Added	LCS Result	LCS Qualifier	Unit	D	%Rec	%Rec Limits
Chloride	50.0	49.6		mg/Kg		99	90 - 110

- 1
- 2
- 3
- 4
- 5
- 6
- 7
- 8
- 9
- 10
- 11

QC Association Summary

Client: Ensolium
Project/Site: Trunk K #3

Job ID: 885-41880-1

GC VOA

Prep Batch: 41849

Lab Sample ID	Client Sample ID	Prep Type	Matrix	Method	Prep Batch
885-41880-1	SP-#3	Total/NA	Solid	5035	
MB 885-41849/1-A	Method Blank	Total/NA	Solid	5035	
LCS 885-41849/2-A	Lab Control Sample	Total/NA	Solid	5035	
LCS 885-41849/3-A	Lab Control Sample	Total/NA	Solid	5035	

Analysis Batch: 41854

Lab Sample ID	Client Sample ID	Prep Type	Matrix	Method	Prep Batch
885-41880-1	SP-#3	Total/NA	Solid	8015M/D	41849
MB 885-41849/1-A	Method Blank	Total/NA	Solid	8015M/D	41849
LCS 885-41849/2-A	Lab Control Sample	Total/NA	Solid	8015M/D	41849

Analysis Batch: 41855

Lab Sample ID	Client Sample ID	Prep Type	Matrix	Method	Prep Batch
885-41880-1	SP-#3	Total/NA	Solid	8021B	41849
MB 885-41849/1-A	Method Blank	Total/NA	Solid	8021B	41849
LCS 885-41849/3-A	Lab Control Sample	Total/NA	Solid	8021B	41849

GC Semi VOA

Prep Batch: 41852

Lab Sample ID	Client Sample ID	Prep Type	Matrix	Method	Prep Batch
885-41880-1	SP-#3	Total/NA	Solid	SHAKE	
MB 885-41852/1-A	Method Blank	Total/NA	Solid	SHAKE	
LCS 885-41852/2-A	Lab Control Sample	Total/NA	Solid	SHAKE	
885-41880-1 MS	SP-#3	Total/NA	Solid	SHAKE	
885-41880-1 MSD	SP-#3	Total/NA	Solid	SHAKE	

Analysis Batch: 41857

Lab Sample ID	Client Sample ID	Prep Type	Matrix	Method	Prep Batch
MB 885-41852/1-A	Method Blank	Total/NA	Solid	8015M/D	41852
LCS 885-41852/2-A	Lab Control Sample	Total/NA	Solid	8015M/D	41852

Analysis Batch: 41860

Lab Sample ID	Client Sample ID	Prep Type	Matrix	Method	Prep Batch
885-41880-1	SP-#3	Total/NA	Solid	8015M/D	41852
885-41880-1 MS	SP-#3	Total/NA	Solid	8015M/D	41852
885-41880-1 MSD	SP-#3	Total/NA	Solid	8015M/D	41852

HPLC/IC

Prep Batch: 41870

Lab Sample ID	Client Sample ID	Prep Type	Matrix	Method	Prep Batch
885-41880-1	SP-#3	Total/NA	Solid	300_Prep	
MB 885-41870/1-A	Method Blank	Total/NA	Solid	300_Prep	
LCS 885-41870/2-A	Lab Control Sample	Total/NA	Solid	300_Prep	

Analysis Batch: 41875

Lab Sample ID	Client Sample ID	Prep Type	Matrix	Method	Prep Batch
885-41880-1	SP-#3	Total/NA	Solid	300.0	41870
MB 885-41870/1-A	Method Blank	Total/NA	Solid	300.0	41870
LCS 885-41870/2-A	Lab Control Sample	Total/NA	Solid	300.0	41870

Eurofins Albuquerque

Lab Chronicle

Client: Ensolum
 Project/Site: Trunk K #3

Job ID: 885-41880-1

Client Sample ID: SP-#3

Lab Sample ID: 885-41880-1

Date Collected: 01/22/26 11:00

Matrix: Solid

Date Received: 01/23/26 07:05

Prep Type	Batch Type	Batch Method	Run	Dilution Factor	Batch Number	Batch Analyst	Lab	Prepared or Analyzed
Total/NA	Prep	5035			41849	VP	EET ALB	01/23/26 07:55
Total/NA	Analysis	8015M/D		1	41854	VP	EET ALB	01/23/26 11:49
Total/NA	Prep	5035			41849	VP	EET ALB	01/23/26 07:55
Total/NA	Analysis	8021B		1	41855	VP	EET ALB	01/23/26 11:49
Total/NA	Prep	SHAKE			41852	EM	EET ALB	01/23/26 08:11
Total/NA	Analysis	8015M/D		1	41860	EM	EET ALB	01/23/26 10:26
Total/NA	Prep	300_Prep			41870	EH	EET ALB	01/23/26 10:08
Total/NA	Analysis	300.0		10	41875	EH	EET ALB	01/23/26 12:56

Laboratory References:

EET ALB = Eurofins Albuquerque, 4901 Hawkins NE, Albuquerque, NM 87109, TEL (505)345-3975



Accreditation/Certification Summary

Client: Ensolum
Project/Site: Trunk K #3

Job ID: 885-41880-1

Laboratory: Eurofins Albuquerque

The accreditations/certifications listed below are applicable to this report.

Authority	Program	Identification Number	Expiration Date
Oregon	NELAP	NM100001	02-25-26

- 1
- 2
- 3
- 4
- 5
- 6
- 7
- 8
- 9
- 10
- 11

Chain-of-Custody Record

Client: Ensolem Turn-Around Time: 100%
 Standard Rush 1-23-26
 Project Name: TRUNK #3
 Project #: _____

Project Manager: K Summers
 Sampler: P. Saporiti
 On Ice: Yes No
 # of Coolers: 1
 Cooler Temp (including CF): 0.5 to 2.0 F (°C)

Container Type and #: 4oz Jar Cool Preservative Type: _____ HEAL No.: _____
 Date: 1/22 Time: 1100 Matrix: S Sample Name: SP-#3

Date	Time	Relinquished by	Via	Date	Time
1/22/26	1525	<i>[Signature]</i>		1/22/26	1525
1/22/26	1745	<i>[Signature]</i>		1/22/26	1745

Received by: Chris Date: 1/22/26 Time: 1525
 Received by: [Signature] Date: 1/22/26 Time: 1745

Analysis Request

<input checked="" type="checkbox"/> BTEX / MDE / HBS (8021)	<input checked="" type="checkbox"/>
TPH:8015D(GRO / DRO / MRO)	<input checked="" type="checkbox"/>
8081 Pesticides/8082 PCBs	<input type="checkbox"/>
EDB (Method 504.1)	<input type="checkbox"/>
PAHs by 8310 or 8270SIMS	<input type="checkbox"/>
RCRA 8 Metals	<input checked="" type="checkbox"/>
CI, PI, NI, SO ₄ , NO ₃ , NH ₄ ⁺	<input checked="" type="checkbox"/>
8260 (VOA)	<input type="checkbox"/>
8270 (Semi-VOA)	<input type="checkbox"/>
Total Coliform (Present/Absent)	<input type="checkbox"/>

Remarks: Tom Long
RB 21200
[Signature]

1
2
3
4
5
6
7
8
9
10
11

If necessary, samples submitted to Hall Environmental may be subcontracted to other accredited laboratories. This serves as notice of this possibility. Any sub-contracted data will be clearly notated on the analytical report.

Login Sample Receipt Checklist

Client: Ensolum

Job Number: 885-41880-1

Login Number: 41880

List Source: Eurofins Albuquerque

List Number: 1

Creator: Casarrubias, Tracy

Question	Answer	Comment
The cooler's custody seal, if present, is intact.	True	
Sample custody seals, if present, are intact.	True	
The cooler or samples do not appear to have been compromised or tampered with.	True	
Samples were received on ice.	True	
Cooler Temperature is acceptable.	True	
Cooler Temperature is recorded.	True	
COC is present.	True	
COC is filled out in ink and legible.	True	
COC is filled out with all pertinent information.	True	
Is the Field Sampler's name present on COC?	True	
There are no discrepancies between the containers received and the COC.	True	
Samples are received within Holding Time (excluding tests with immediate HTs)	True	
Sample containers have legible labels.	True	
Containers are not broken or leaking.	True	
Sample collection date/times are provided.	True	
Appropriate sample containers are used.	True	
Sample bottles are completely filled.	True	
Sample Preservation Verified.	N/A	
There is sufficient vol. for all requested analyses, incl. any requested MS/MSDs	True	
Containers requiring zero headspace have no headspace or bubble is <6mm (1/4").	True	



Sante Fe Main Office
Phone: (505) 476-3441

General Information
Phone: (505) 629-6116

Online Phone Directory
<https://www.emnrd.nm.gov/ocd/contact-us>

State of New Mexico
Energy, Minerals and Natural Resources
Oil Conservation Division
1220 S. St Francis Dr.
Santa Fe, NM 87505

QUESTIONS

Action 573992

QUESTIONS

Operator: Enterprise Field Services, LLC PO Box 4324 Houston, TX 77210	OGRID: 241602
	Action Number: 573992
	Action Type: [C-141] Reclamation Report C-141 (C-141-v-Reclamation)

QUESTIONS

Prerequisites	
Incident ID (n#)	nAPP2601353677
Incident Name	NAPP2601353677 TRUNK K #3 @ B-08-26N-07W
Incident Type	Natural Gas Release
Incident Status	Reclamation Report Received

Location of Release Source	
<i>Please answer all the questions in this group.</i>	
Site Name	TRUNK K #3
Date Release Discovered	01/13/2026
Surface Owner	Federal

Incident Details	
<i>Please answer all the questions in this group.</i>	
Incident Type	Natural Gas Release
Did this release result in a fire or is the result of a fire	No
Did this release result in any injuries	No
Has this release reached or does it have a reasonable probability of reaching a watercourse	No
Has this release endangered or does it have a reasonable probability of endangering public health	No
Has this release substantially damaged or will it substantially damage property or the environment	No
Is this release of a volume that is or may with reasonable probability be detrimental to fresh water	No

Nature and Volume of Release	
<i>Material(s) released, please answer all that apply below. Any calculations or specific justifications for the volumes provided should be attached to the follow-up C-141 submission.</i>	
Crude Oil Released (bbls) Details	Not answered.
Produced Water Released (bbls) Details	Not answered.
Is the concentration of chloride in the produced water >10,000 mg/l	No
Condensate Released (bbls) Details	Cause: Corrosion Pipeline (Any) Condensate Released: 5 BBL Recovered: 0 BBL Lost: 5 BBL.
Natural Gas Vented (Mcf) Details	Cause: Corrosion Pipeline (Any) Natural Gas Vented Released: 8 MCF Recovered: 0 MCF Lost: 8 MCF.
Natural Gas Flared (Mcf) Details	Not answered.
Other Released Details	Not answered.
Are there additional details for the questions above (i.e. any answer containing Other, Specify, Unknown, and/or Fire, or any negative lost amounts)	Not answered.

Sante Fe Main Office
Phone: (505) 476-3441

General Information
Phone: (505) 629-6116

Online Phone Directory
<https://www.emnrd.nm.gov/ocd/contact-us>

State of New Mexico
Energy, Minerals and Natural Resources
Oil Conservation Division
1220 S. St Francis Dr.
Santa Fe, NM 87505

QUESTIONS, Page 2

Action 573992

QUESTIONS (continued)

Operator: Enterprise Field Services, LLC PO Box 4324 Houston, TX 77210	OGRID: 241602
	Action Number: 573992
	Action Type: [C-141] Reclamation Report C-141 (C-141-v-Reclamation)

QUESTIONS

Nature and Volume of Release (continued)	
Is this a gas only submission (i.e. only significant Mcf values reported)	Yes, according to supplied volumes this will be treated as a "gas only" report.
Was this a major release as defined by Subsection A of 19.15.29.7 NMAC	No
Reasons why this would be considered a submission for a notification of a major release	<i>Unavailable.</i>
<i>With the implementation of the 19.15.27 NMAC (05/25/2021), venting and/or flaring of natural gas (i.e. gas only) are to be submitted on the C-129 form.</i>	

Initial Response

The responsible party must undertake the following actions immediately unless they could create a safety hazard that would result in injury.

The source of the release has been stopped	True
The impacted area has been secured to protect human health and the environment	True
Released materials have been contained via the use of berms or dikes, absorbent pads, or other containment devices	True
All free liquids and recoverable materials have been removed and managed appropriately	True
If all the actions described above have not been undertaken, explain why	<i>Not answered.</i>

Per Paragraph (4) of Subsection B of 19.15.29.8 NMAC the responsible party may commence remediation immediately after discovery of a release. If remediation has begun, please prepare and attach a narrative of actions to date in the follow-up C-141 submission. If remedial efforts have been successfully completed or if the release occurred within a lined containment area (see Subparagraph (a) of Paragraph (5) of Subsection A of 19.15.29.11 NMAC), please prepare and attach all information needed for closure evaluation in the follow-up C-141 submission.

I hereby certify that the information given above is true and complete to the best of my knowledge and understand that pursuant to OCD rules and regulations all operators are required to report and/or file certain release notifications and perform corrective actions for releases which may endanger public health or the environment. The acceptance of a C-141 report by the OCD does not relieve the operator of liability should their operations have failed to adequately investigate and remediate contamination that pose a threat to groundwater, surface water, human health or the environment. In addition, OCD acceptance of a C-141 report does not relieve the operator of responsibility for compliance with any other federal, state, or local laws and/or regulations.

I hereby agree and sign off to the above statement	Name: Thomas Long Title: Sr Field Environmental Scientist Email: tjlong@eprod.com Date: 04/10/2026
--	---

Sante Fe Main Office
Phone: (505) 476-3441

General Information
Phone: (505) 629-6116

Online Phone Directory
<https://www.emnrd.nm.gov/ocd/contact-us>

State of New Mexico
Energy, Minerals and Natural Resources
Oil Conservation Division
1220 S. St Francis Dr.
Santa Fe, NM 87505

QUESTIONS, Page 3

Action 573992

QUESTIONS (continued)

Operator: Enterprise Field Services, LLC PO Box 4324 Houston, TX 77210	OGRID: 241602
	Action Number: 573992
	Action Type: [C-141] Reclamation Report C-141 (C-141-v-Reclamation)

QUESTIONS

Site Characterization	
<i>Please answer all the questions in this group (only required when seeking remediation plan approval and beyond). This information must be provided to the appropriate district office no later than 90 days after the release discovery date.</i>	
What is the shallowest depth to groundwater beneath the area affected by the release in feet below ground surface (ft bgs)	Between 26 and 50 (ft.)
What method was used to determine the depth to ground water	NM OSE iWaters Database Search
Did this release impact groundwater or surface water	No
What is the minimum distance, between the closest lateral extents of the release and the following surface areas:	
A continuously flowing watercourse or any other significant watercourse	Between 500 and 1000 (ft.)
Any lakebed, sinkhole, or playa lake (measured from the ordinary high-water mark)	Between 100 and 200 (ft.)
An occupied permanent residence, school, hospital, institution, or church	Between 1000 (ft.) and ½ (mi.)
A spring or a private domestic fresh water well used by less than five households for domestic or stock watering purposes	Between 1000 (ft.) and ½ (mi.)
Any other fresh water well or spring	Between 1000 (ft.) and ½ (mi.)
Incorporated municipal boundaries or a defined municipal fresh water well field	Greater than 5 (mi.)
A wetland	Between 100 and 200 (ft.)
A subsurface mine	Greater than 5 (mi.)
An (non-karst) unstable area	Greater than 5 (mi.)
Categorize the risk of this well / site being in a karst geology	Low
A 100-year floodplain	Between 500 and 1000 (ft.)
Did the release impact areas not on an exploration, development, production, or storage site	No

Remediation Plan	
<i>Please answer all the questions that apply or are indicated. This information must be provided to the appropriate district office no later than 90 days after the release discovery date.</i>	
Requesting a remediation plan approval with this submission	Yes
<i>Attach a comprehensive report demonstrating the lateral and vertical extents of soil contamination associated with the release have been determined, pursuant to 19.15.29.11 NMAC and 19.15.29.13 NMAC.</i>	
Have the lateral and vertical extents of contamination been fully delineated	Yes
Was this release entirely contained within a lined containment area	No
Soil Contamination Sampling: (Provide the highest observable value for each, in milligrams per kilograms.)	
Chloride (EPA 300.0 or SM4500 Cl B)	0.1
TPH (GRO+DRO+MRO) (EPA SW-846 Method 8015M)	0.1
GRO+DRO (EPA SW-846 Method 8015M)	0.1
BTEX (EPA SW-846 Method 8021B or 8260B)	0.1
Benzene (EPA SW-846 Method 8021B or 8260B)	0.1
<i>Per Subsection B of 19.15.29.11 NMAC unless the site characterization report includes completed efforts at remediation, the report must include a proposed remediation plan in accordance with 19.15.29.12 NMAC, which includes the anticipated timelines for beginning and completing the remediation.</i>	
On what estimated date will the remediation commence	01/13/2026
On what date will (or did) the final sampling or liner inspection occur	01/16/2026
On what date will (or was) the remediation complete(d)	01/16/2026
What is the estimated surface area (in square feet) that will be reclaimed	540
What is the estimated volume (in cubic yards) that will be reclaimed	104
What is the estimated surface area (in square feet) that will be remediated	540
What is the estimated volume (in cubic yards) that will be remediated	104
<i>These estimated dates and measurements are recognized to be the best guess or calculation at the time of submission and may (be) change(d) over time as more remediation efforts are completed.</i>	
<i>The OCD recognizes that proposed remediation measures may have to be minimally adjusted in accordance with the physical realities encountered during remediation. If the responsible party has any need to significantly deviate from the remediation plan proposed, then it should consult with the division to determine if another remediation plan submission is required.</i>	

Sante Fe Main Office
Phone: (505) 476-3441

General Information
Phone: (505) 629-6116

Online Phone Directory
<https://www.emnrd.nm.gov/ocd/contact-us>

**State of New Mexico
Energy, Minerals and Natural Resources
Oil Conservation Division
1220 S. St Francis Dr.
Santa Fe, NM 87505**

QUESTIONS, Page 4

Action 573992

QUESTIONS (continued)

Operator: Enterprise Field Services, LLC PO Box 4324 Houston, TX 77210	OGRID: 241602
	Action Number: 573992
	Action Type: [C-141] Reclamation Report C-141 (C-141-v-Reclamation)

QUESTIONS

Remediation Plan (continued)

Please answer all the questions that apply or are indicated. This information must be provided to the appropriate district office no later than 90 days after the release discovery date.

This remediation will (or is expected to) utilize the following processes to remediate / reduce contaminants:

(Select all answers below that apply.)

(Ex Situ) Excavation and off-site disposal (i.e. dig and haul, hydrovac, etc.)	Yes
Which OCD approved facility will be used for off-site disposal	fEEM0112334691 ENVIROTECH LANDFARM #1
OR which OCD approved well (API) will be used for off-site disposal	Not answered.
OR is the off-site disposal site, to be used, out-of-state	Not answered.
OR is the off-site disposal site, to be used, an NMED facility	Not answered.
(Ex Situ) Excavation and on-site remediation (i.e. On-Site Land Farms)	Not answered.
(In Situ) Soil Vapor Extraction	Not answered.
(In Situ) Chemical processing (i.e. Soil Shredding, Potassium Permanganate, etc.)	Not answered.
(In Situ) Biological processing (i.e. Microbes / Fertilizer, etc.)	Not answered.
(In Situ) Physical processing (i.e. Soil Washing, Gypsum, Disking, etc.)	Not answered.
Ground Water Abatement pursuant to 19.15.30 NMAC	Not answered.
OTHER (Non-listed remedial process)	Not answered.

Per Subsection B of 19.15.29.11 NMAC unless the site characterization report includes completed efforts at remediation, the report must include a proposed remediation plan in accordance with 19.15.29.12 NMAC, which includes the anticipated timelines for beginning and completing the remediation.

I hereby certify that the information given above is true and complete to the best of my knowledge and understand that pursuant to OCD rules and regulations all operators are required to report and/or file certain release notifications and perform corrective actions for releases which may endanger public health or the environment. The acceptance of a C-141 report by the OCD does not relieve the operator of liability should their operations have failed to adequately investigate and remediate contamination that pose a threat to groundwater, surface water, human health or the environment. In addition, OCD acceptance of a C-141 report does not relieve the operator of responsibility for compliance with any other federal, state, or local laws and/or regulations.

I hereby agree and sign off to the above statement	Name: Thomas Long Title: Sr Field Environmental Scientist Email: tjlong@eprod.com Date: 04/10/2026
--	---

The OCD recognizes that proposed remediation measures may have to be minimally adjusted in accordance with the physical realities encountered during remediation. If the responsible party has any need to significantly deviate from the remediation plan proposed, then it should consult with the division to determine if another remediation plan submission is required.

Sante Fe Main Office
Phone: (505) 476-3441

General Information
Phone: (505) 629-6116

Online Phone Directory
<https://www.emnrd.nm.gov/ocd/contact-us>

State of New Mexico
Energy, Minerals and Natural Resources
Oil Conservation Division
1220 S. St Francis Dr.
Santa Fe, NM 87505

QUESTIONS, Page 5

Action 573992

QUESTIONS (continued)

Operator: Enterprise Field Services, LLC PO Box 4324 Houston, TX 77210	OGRID: 241602
	Action Number: 573992
	Action Type: [C-141] Reclamation Report C-141 (C-141-v-Reclamation)

QUESTIONS

Deferral Requests Only	
<i>Only answer the questions in this group if seeking a deferral upon approval this submission. Each of the following items must be confirmed as part of any request for deferral of remediation.</i>	
Requesting a deferral of the remediation closure due date with the approval of this submission	No

Sante Fe Main Office
Phone: (505) 476-3441

General Information
Phone: (505) 629-6116

Online Phone Directory
<https://www.emnrd.nm.gov/ocd/contact-us>

State of New Mexico
Energy, Minerals and Natural Resources
Oil Conservation Division
1220 S. St Francis Dr.
Santa Fe, NM 87505

QUESTIONS, Page 6

Action 573992

QUESTIONS (continued)

Operator: Enterprise Field Services, LLC PO Box 4324 Houston, TX 77210	OGRID: 241602
	Action Number: 573992
	Action Type: [C-141] Reclamation Report C-141 (C-141-v-Reclamation)

QUESTIONS

Sampling Event Information	
Last sampling notification (C-141N) recorded	544460
Sampling date pursuant to Subparagraph (a) of Paragraph (1) of Subsection D of 19.15.29.12 NMAC	01/22/2026
What was the (estimated) number of samples that were to be gathered	1
What was the sampling surface area in square feet	200

Remediation Closure Request	
<i>Only answer the questions in this group if seeking remediation closure for this release because all remediation steps have been completed.</i>	
Requesting a remediation closure approval with this submission	Yes
Have the lateral and vertical extents of contamination been fully delineated	Yes
Was this release entirely contained within a lined containment area	No
All areas reasonably needed for production or subsequent drilling operations have been stabilized, returned to the sites existing grade, and have a soil cover that prevents ponding of water, minimizing dust and erosion	Yes
What was the total surface area (in square feet) remediated	540
What was the total volume (cubic yards) remediated	104
All areas not reasonably needed for production or subsequent drilling operations have been reclaimed to contain a minimum of four feet of non-waste contain earthen material with concentrations less than 600 mg/kg chlorides, 100 mg/kg TPH, 50 mg/kg BTEX, and 10 mg/kg Benzene	Yes
What was the total surface area (in square feet) reclaimed	540
What was the total volume (in cubic yards) reclaimed	104
Summarize any additional remediation activities not included by answers (above)	None

The responsible party must attach information demonstrating they have complied with all applicable closure requirements and any conditions or directives of the OCD. This demonstration should be in the form of a comprehensive report (in .pdf format) including a scaled site map, sampling diagrams, relevant field notes, photographs of any excavation prior to backfilling, laboratory data including chain of custody documents of final sampling, and a narrative of the remedial activities. Refer to 19.15.29.12 NMAC.

I hereby certify that the information given above is true and complete to the best of my knowledge and understand that pursuant to OCD rules and regulations all operators are required to report and/or file certain release notifications and perform corrective actions for releases which may endanger public health or the environment. The acceptance of a C-141 report by the OCD does not relieve the operator of liability should their operations have failed to adequately investigate and remediate contamination that pose a threat to groundwater, surface water, human health or the environment. In addition, OCD acceptance of a C-141 report does not relieve the operator of responsibility for compliance with any other federal, state, or local laws and/or regulations. The responsible party acknowledges they must substantially restore, reclaim, and re-vegetate the impacted surface area to the conditions that existed prior to the release or their final land use in accordance with 19.15.29.13 NMAC including notification to the OCD when reclamation and re-vegetation are complete.

I hereby agree and sign off to the above statement	Name: Thomas Long Title: Sr Field Environmental Scientist Email: tjlong@eprod.com Date: 04/10/2026
--	---

Sante Fe Main Office
Phone: (505) 476-3441

General Information
Phone: (505) 629-6116

Online Phone Directory
<https://www.emnrd.nm.gov/ocd/contact-us>

State of New Mexico
Energy, Minerals and Natural Resources
Oil Conservation Division
1220 S. St Francis Dr.
Santa Fe, NM 87505

QUESTIONS, Page 7

Action 573992

QUESTIONS (continued)

Operator: Enterprise Field Services, LLC PO Box 4324 Houston, TX 77210	OGRID: 241602
	Action Number: 573992
	Action Type: [C-141] Reclamation Report C-141 (C-141-v-Reclamation)

QUESTIONS

Reclamation Report	
<i>Only answer the questions in this group if all reclamation steps have been completed.</i>	
Requesting a reclamation approval with this submission	Yes
What was the total reclamation surface area (in square feet) for this site	540
What was the total volume of replacement material (in cubic yards) for this site	104
<i>Per Paragraph (1) of Subsection D of 19.15.29.13 NMAC the reclamation must contain a minimum of four feet of non-waste containing, uncontaminated, earthen material with chloride concentrations less than 600 mg/kg as analyzed by EPA Method 300.0, or other test methods approved by the division. The soil cover must include a top layer, which is either the background thickness of topsoil or one foot of suitable material to establish vegetation at the site, whichever is greater.</i>	
Is the soil top layer complete and is it suitable material to establish vegetation	Yes
On what (estimated) date will (or was) the reseeded commence(d)	09/01/2026
Summarize any additional reclamation activities not included by answers (above)	None
<i>The responsible party must attach information demonstrating they have complied with all applicable reclamation requirements and any conditions or directives of the OCD. This demonstration should be in the form of attachments (in .pdf format) including a scaled site map, any proposed reseeded plans or relevant field notes, photographs of reclaimed area, and a narrative of the reclamation activities. Refer to 19.15.29.13 NMAC.</i>	
I hereby certify that the information given above is true and complete to the best of my knowledge and understand that pursuant to OCD rules and regulations all operators are required to report and/or file certain release notifications and perform corrective actions for releases which may endanger public health or the environment. The acceptance of a C-141 report by the OCD does not relieve the operator of liability should their operations have failed to adequately investigate and remediate contamination that pose a threat to groundwater, surface water, human health or the environment. In addition, OCD acceptance of a C-141 report does not relieve the operator of responsibility for compliance with any other federal, state, or local laws and/or regulations. The responsible party acknowledges they must substantially restore, reclaim, and re-vegetate the impacted surface area to the conditions that existed prior to the release or their final land use in accordance with 19.15.29.13 NMAC including notification to the OCD when reclamation and re-vegetation are complete.	
I hereby agree and sign off to the above statement	Name: Thomas Long Title: Sr Field Environmental Scientist Email: tjlong@eprod.com Date: 04/10/2026

Sante Fe Main Office
Phone: (505) 476-3441

General Information
Phone: (505) 629-6116

Online Phone Directory
<https://www.emnrd.nm.gov/ocd/contact-us>

State of New Mexico
Energy, Minerals and Natural Resources
Oil Conservation Division
1220 S. St Francis Dr.
Santa Fe, NM 87505

QUESTIONS, Page 8

Action 573992

QUESTIONS (continued)

Operator: Enterprise Field Services, LLC PO Box 4324 Houston, TX 77210	OGRID: 241602
	Action Number: 573992
	Action Type: [C-141] Reclamation Report C-141 (C-141-v-Reclamation)

QUESTIONS

Revegetation Report	
<i>Only answer the questions in this group if all surface restoration, reclamation and re-vegetation obligations have been satisfied.</i>	
Requesting a restoration complete approval with this submission	No
<i>Per Paragraph (4) of Subsection (D) of 19.15.29.13 NMAC for any major or minor release containing liquids, the responsible party must notify the division when reclamation and re-vegetation are complete.</i>	

Sante Fe Main Office
Phone: (505) 476-3441

General Information
Phone: (505) 629-6116

Online Phone Directory
<https://www.emnrd.nm.gov/ocd/contact-us>

State of New Mexico
Energy, Minerals and Natural Resources
Oil Conservation Division
1220 S. St Francis Dr.
Santa Fe, NM 87505

CONDITIONS

Action 573992

CONDITIONS

Operator: Enterprise Field Services, LLC PO Box 4324 Houston, TX 77210	OGRID: 241602
	Action Number: 573992
	Action Type: [C-141] Reclamation Report C-141 (C-141-v-Reclamation)

CONDITIONS

Created By	Condition	Condition Date
michael.buchanan	The reclamation report has been approved pursuant to 19.15.29.13 E. NMAC. The acceptance of this report by the OCD does not relieve the operator of liability should their operations have failed to adequately investigate and remediate contamination that pose a threat to groundwater, surface water, human health or the environment; or if the location fails to revegetate properly. In addition, the OCD approval does not relieve the responsible party of compliance with any other federal, state, or local laws and/or regulations.	4/20/2026
michael.buchanan	A revegetation report will not be accepted until revegetation of the release area, including areas reasonably needed for production or drilling activities, is complete and meet the requirements of 19.15.29.13 NMAC. Areas not reasonably needed for production or drilling activities will still need to be reclaimed and revegetated as early as practicable.	4/20/2026
michael.buchanan	All revegetation activities will need to be documented and included in the revegetation report. The revegetation report will need to include: An executive summary of the revegetation activities including: Seed mix, Method of seeding, dates of when the release area was reseeded, information pertinent to inspections, information about any amendments added to the soil, information on how the vegetative cover established meets the life-form ratio of plus or minus fifty percent of pre-disturbance levels and a total percent plant cover of at least seventy percent of pre-disturbance levels, excluding noxious weeds per 19.15.29.13 D.(3) NMAC, and any additional information; a scaled Site Map including area that was revegetated in square feet; and pictures of the revegetated areas during reseeded activities, inspections, and final pictures when revegetation is achieved.	4/20/2026
michael.buchanan	Per 19.15.29.13 E. NMAC, if a reclamation and revegetation report has been submitted to the surface owner, it may be used if the requirements of the surface owner provide equal or better protection of freshwater, human health, and the environment. A copy of the approval of the reclamation and revegetation report from the surface owner and a copy of the approved reclamation and revegetation report will need to be submitted to the OCD via the Permitting website.	4/20/2026