



ENTERPRISE PRODUCTS PARTNERS L.P.
ENTERPRISE PRODUCTS HOLDINGS LLC
(General Partner)

ENTERPRISE PRODUCTS OPERATING LLC

April 22, 2026

Submitted online via OCD E-Permitting:
<https://wwwapps.emnrd.nm.gov/OCD/OCDPermitting/default.aspx>

New Mexico Energy, Minerals & Natural Resources
1220 South St. Francis Drive
Santa Fe, NM 87505

RE: Summary of Events
Enterprise Field Services, LLC
Chaco Plant – B Plant Fire
UL M Section 16 T26N R26W; 36.482090, -108.121991
NMOCD Incident #nAPP2602936959

To whom it may concern:

Enterprise Field Services, LLC (Enterprise) is submitting this Summary of Events to the New Mexico Oil Conversation Division (NMOCD) documenting the fire that occurred at Chaco Plant on January 28, 2026. This submittal is a closure request for NMOCD Incident Number nAPP26029369598, which was reported on January 28, 2026.

On January 28, 2026, at approximately 15:15 MT, a fire occurred at the Chaco Plant – B Plant. There were no injuries nor fatalities. No emergency services responded. No liquids were released. The fire self-extinguished. The fire was a result of a cracked bonnet on a cylinder head in which the fire eye caught the flame and caused emergency shutdown.

Per 19.15.29.7 New Mexico Administrative Code (NMAC), this event is defined as a “Major Release,” and soil sampling would ordinarily be required. Enterprise is requesting a variance to the soil sampling requirement per 19.15.29.12.D (1) NMAC, since the fire occurred inside the B Plant building, which has a concrete floor and no liquids were released.

In addition, Enterprise requests a variance to the soil reclamation and revegetation requirement per 19.15.29.13 NMAC. As previously demonstrated, since the fire occurred inside the B Plant building, which has a concrete floor and no liquids were released. Final soil reclamation and revegetation is not applicable.

The NMOCD requires Site Characterization/Siting Criteria documentation per 19.15.29.11 NMAC and photographic documentation per 19.15.29.12 E (1) NMAC for closure of incidents that are “Major Releases.” Site Characterization/Siting criteria of are included in Appendix A. Photographs are included in Appendix B.

Based on the documentation provided in this Summary of Events, Enterprise has determined that no further action is required and requests closure of NMOCD Incident Number nAPP2602936959.

If you have questions or require additional information, please contact our Field Representative, Thomas Long at (505) 599-2286 or Brian Stone, Field Environmental Manager at (970) 263-3020.

Thank you,

A handwritten signature in blue ink, appearing to read "Jon E. Fields". The signature is stylized with a large initial "J" and a long, sweeping underline.

Jon E. Fields
Director, Field Environmental

Appendix A: Site Characterization/Siting Criteria



Folder: C:\Users\Justin Velazquez\OneDrive - ENSOLUM, LLC\Enterprise Field Services, LLC\05A1226409 - Chaco Plant B

Legend
▲ Site Location

Road 7100

Chaco Plant - B Plant Fire

0 500 1,000 2,000
Feet

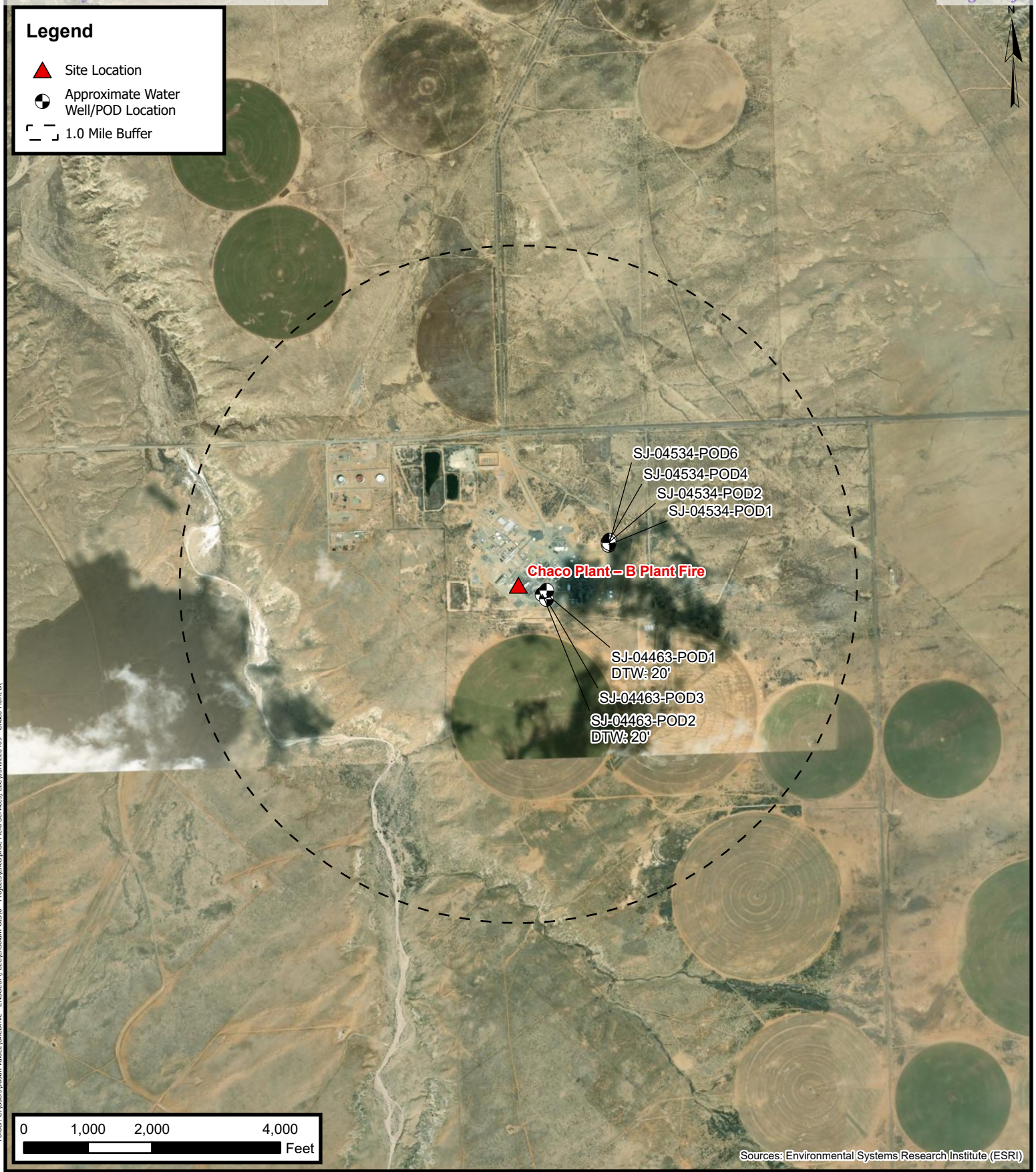
Sources: Environmental Systems Research Institute (ESRI)






Site Vicinity Map

Enterprise Field Services, LLC
Chaco Plant - B Plant Fire
Project Number: 05A1226409
Unit M, Section 16, T 26N, R 12W, San Juan County, New Mexico
36.482090, -108.121991

FIGURE
2



Legend

-  Site Location
-  Approximate Water Well/POD Location
-  1.0 Mile Buffer

Chaco Plant - B Plant Fire

SJ-04534-POD6
 SJ-04534-POD4
 SJ-04534-POD2
 SJ-04534-POD1

SJ-04463-POD1
 DTW: 20'
 SJ-04463-POD3
 SJ-04463-POD2
 DTW: 20'

0 1,000 2,000 4,000
 Feet

Sources: Environmental Systems Research Institute (ESRI)

1.0 Mile Radius Water Well/POD Location Map

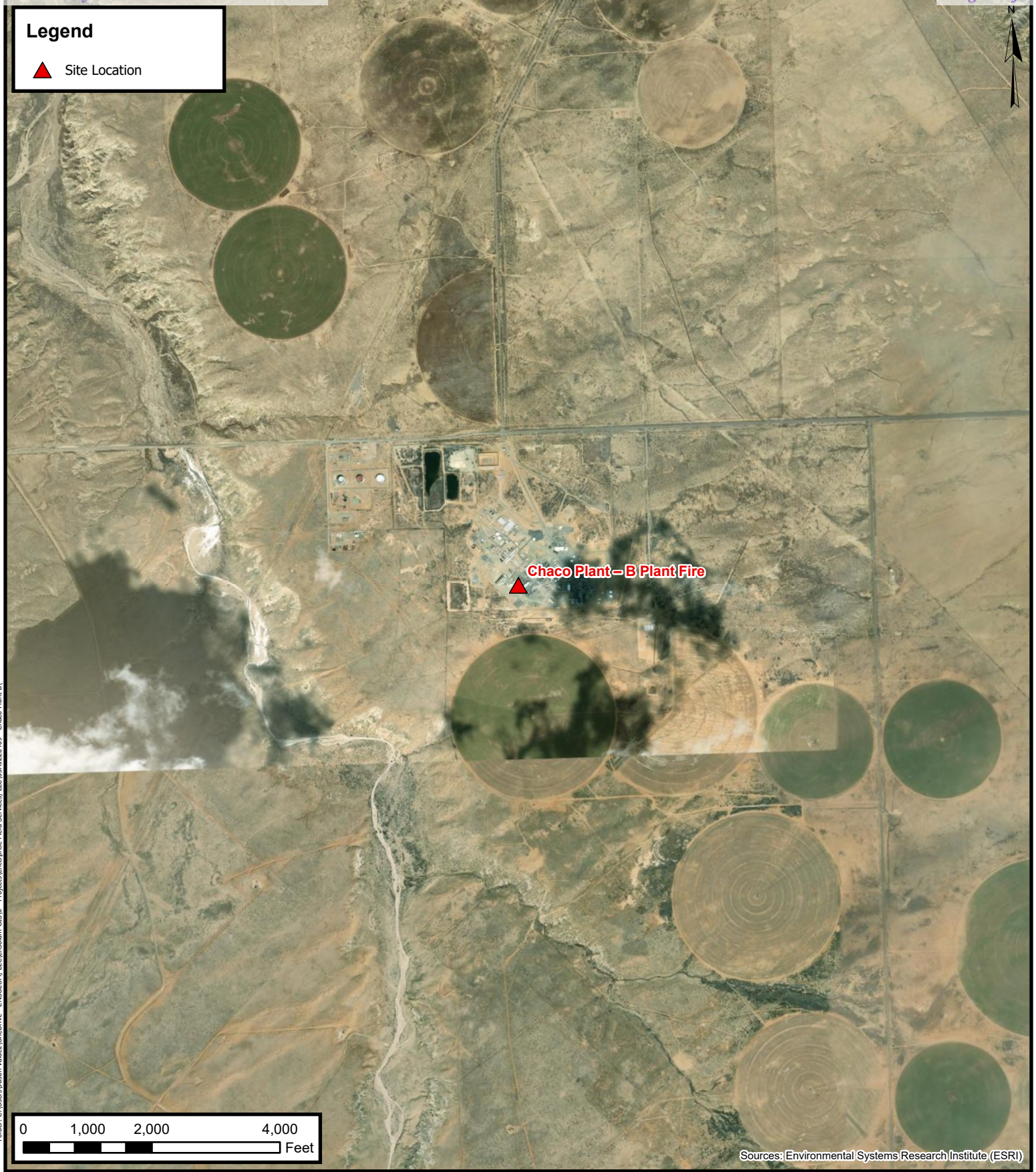
Enterprise Field Services, LLC
 Chaco Plant - B Plant Fire
 Project Number: 05A1226409
 Unit M, Section 16, T 26N, R 12W, San Juan County, New Mexico
 36.482090, -108.121991

**FIGURE
A**



Legend

▲ Site Location



Sources: Environmental Systems Research Institute (ESRI)

Folder: C:\Users\Justin Velazquez\OneDrive - ENSOLUM, LLC\OneDrive - ENSOLUM, LLC\Projects\Enterprise Field Services, LLC\05A1226409 - Chaco Plant B

Cathodic Protection Well Recorded Depth to Water



Enterprise Field Services, LLC
Chaco Plant – B Plant Fire
Project Number: 05A1226409
Unit M, Section 16, T 26N, R 12W, San Juan County, New Mexico
36.482090, -108.121991

**FIGURE
B**




Folder: C:\Users\Justin Velazquez\OneDrive - ENSOLUM, LLC\Ensolium GIS\0 - Projects\Enterprise Field Services, LLC\05A1226409 - Chaco Plant B

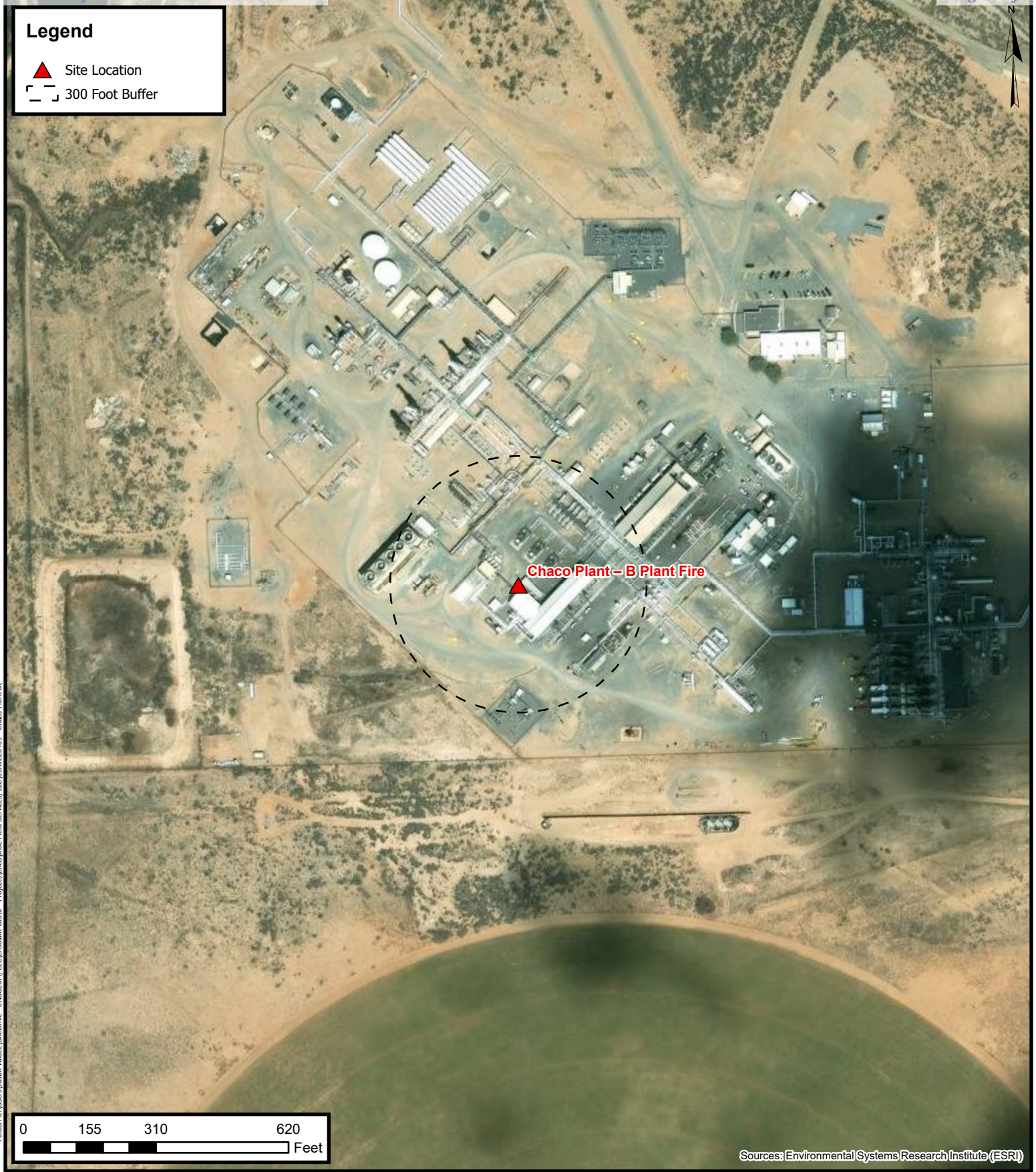


**300 Foot Radius Watercourse
and Drainage Identification**
Enterprise Field Services, LLC
Chaco Plant - B Plant Fire
Project Number: 05A1226409
Unit M, Section 16, T 26N, R 12W, San Juan County, New Mexico
36.482090, -108.121991

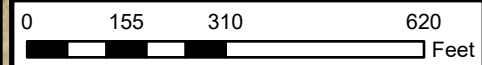
**FIGURE
C**

Legend

-  Site Location
-  300 Foot Buffer



Folder: C:\Users\Justin Velez\OneDrive - ENSOLUM, LLC\Ensolium GIS\0 - Projects\Enterprise Field Services, LLC\05A1226409 - Chaco Plant B

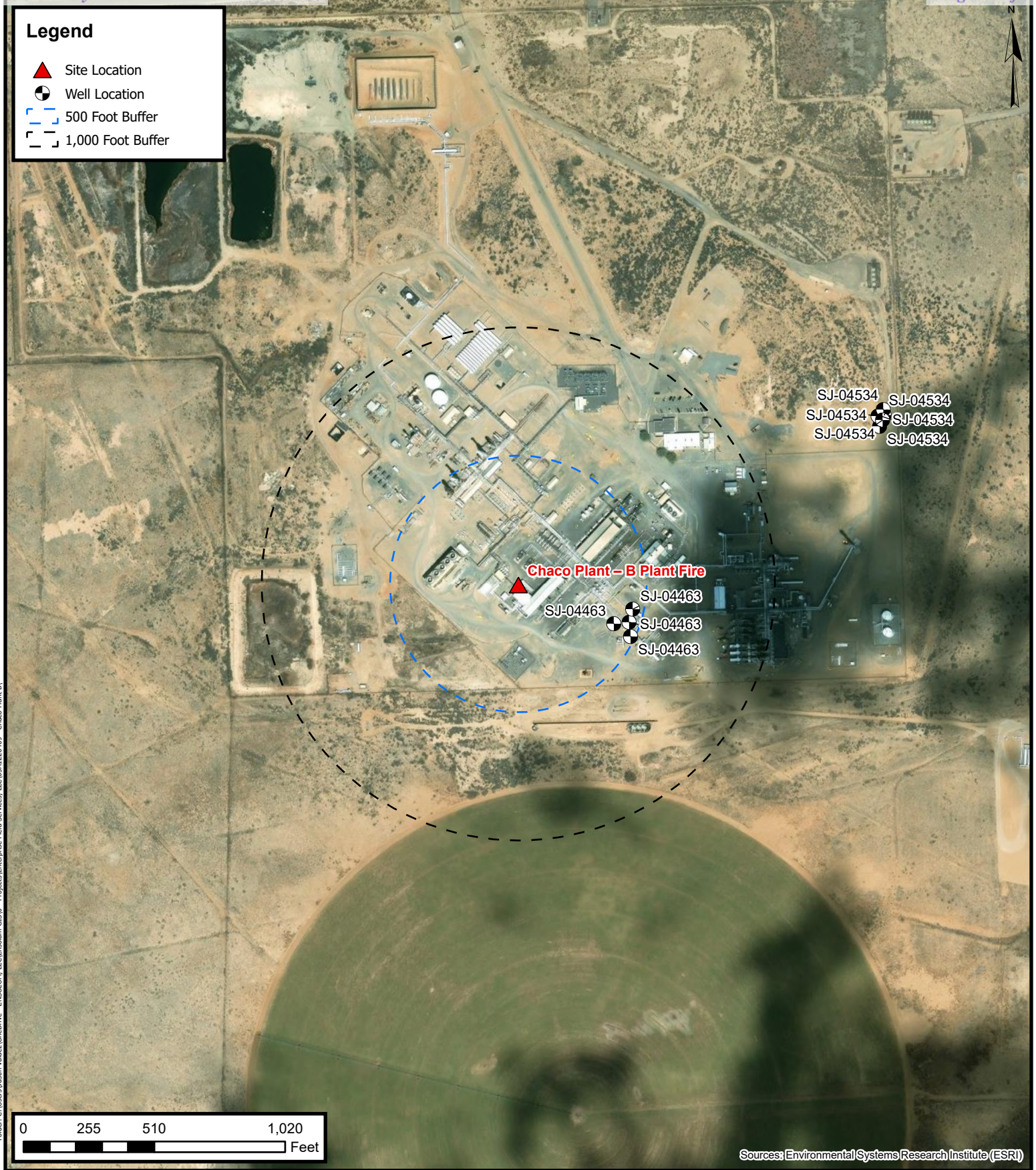


Sources: Environmental Systems Research Institute (ESRI)



300 Foot Radius Occupied Structure Identification
 Enterprise Field Services, LLC
 Chaco Plant – B Plant Fire
 Project Number: 05A1226409
 Unit M, Section 16, T 26N, R 12W, San Juan County, New Mexico
 36.482090, -108.121991

FIGURE D



Folder: C:\Users\Justin Velez\OneDrive - ENSOLUM, LLC\Ensolium GIS\0 - Projects\Enterprise Field Services, LLC\05A1226409 - Chaco Plant B



Water Well and Natural Spring Location

Enterprise Field Services, LLC

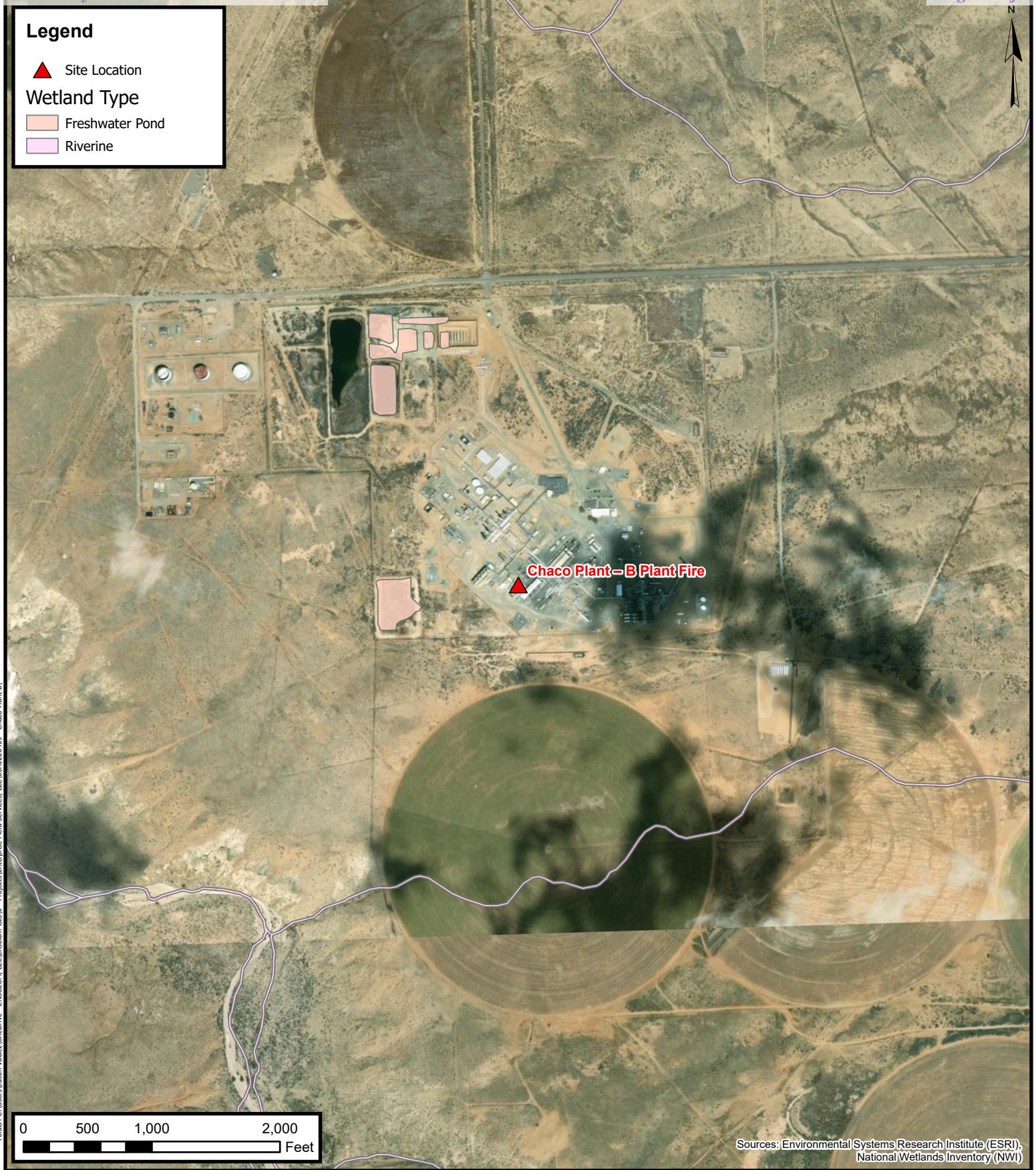
Chaco Plant - B Plant Fire

Project Number: 05A1226409

Unit M, Section 16, T 26N, R 12W, San Juan County, New Mexico

36.482090, -108.121991

**FIGURE
E**



Legend

▲ Site Location

Wetland Type

■ Freshwater Pond

■ Riverine

0 500 1,000 2,000 Feet

Sources: Environmental Systems Research Institute (ESRI), National Wetlands Inventory (NWI)



Wetlands

Enterprise Field Services, LLC

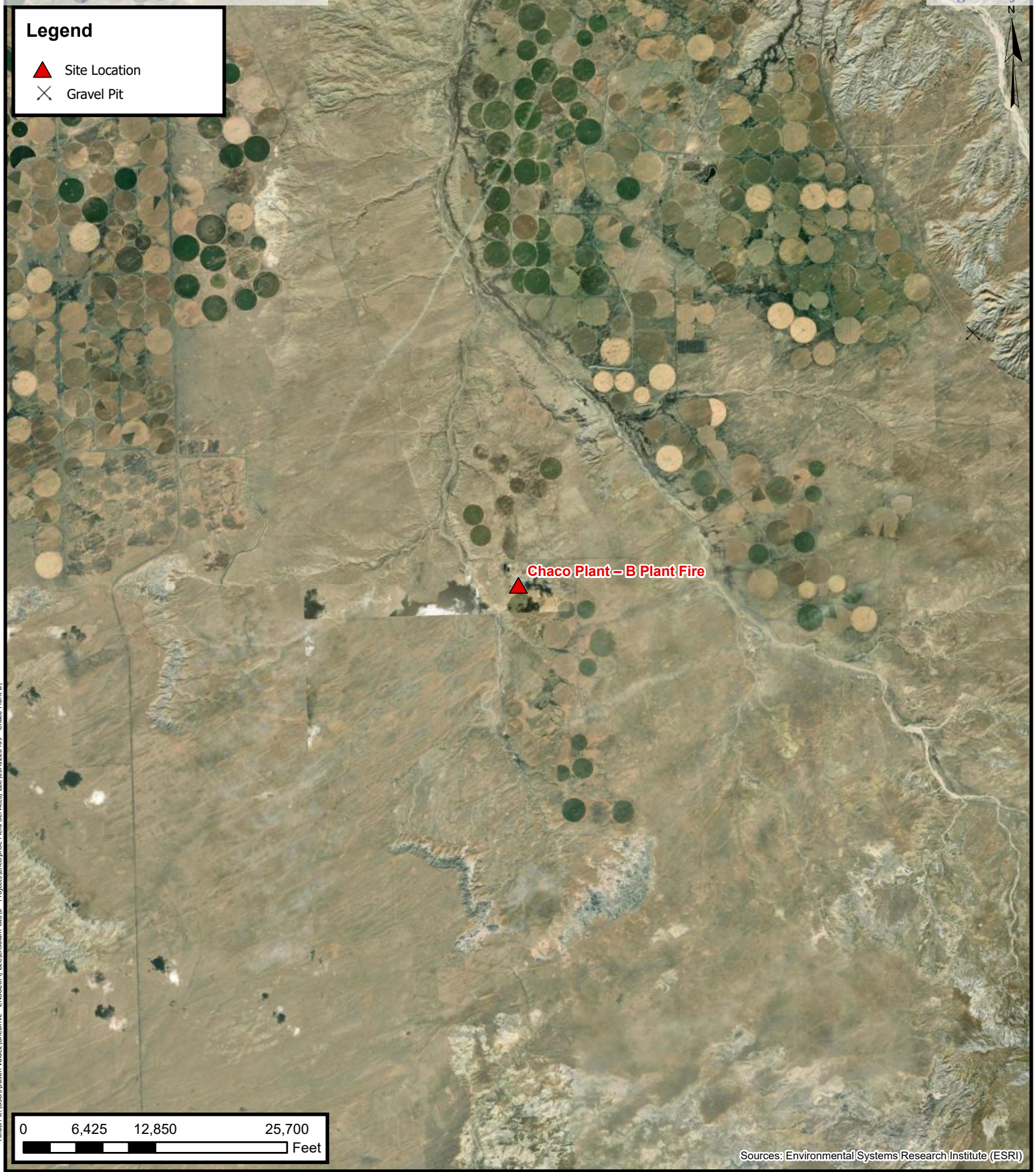
Chaco Plant – B Plant Fire

Project Number: 05A1226409

Unit M, Section 16, T 26N, R 12W, San Juan County, New Mexico
36.482090, -108.121991

FIGURE

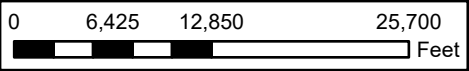
F



Legend

- ▲ Site Location
- ✕ Gravel Pit

Chaco Plant - B Plant Fire

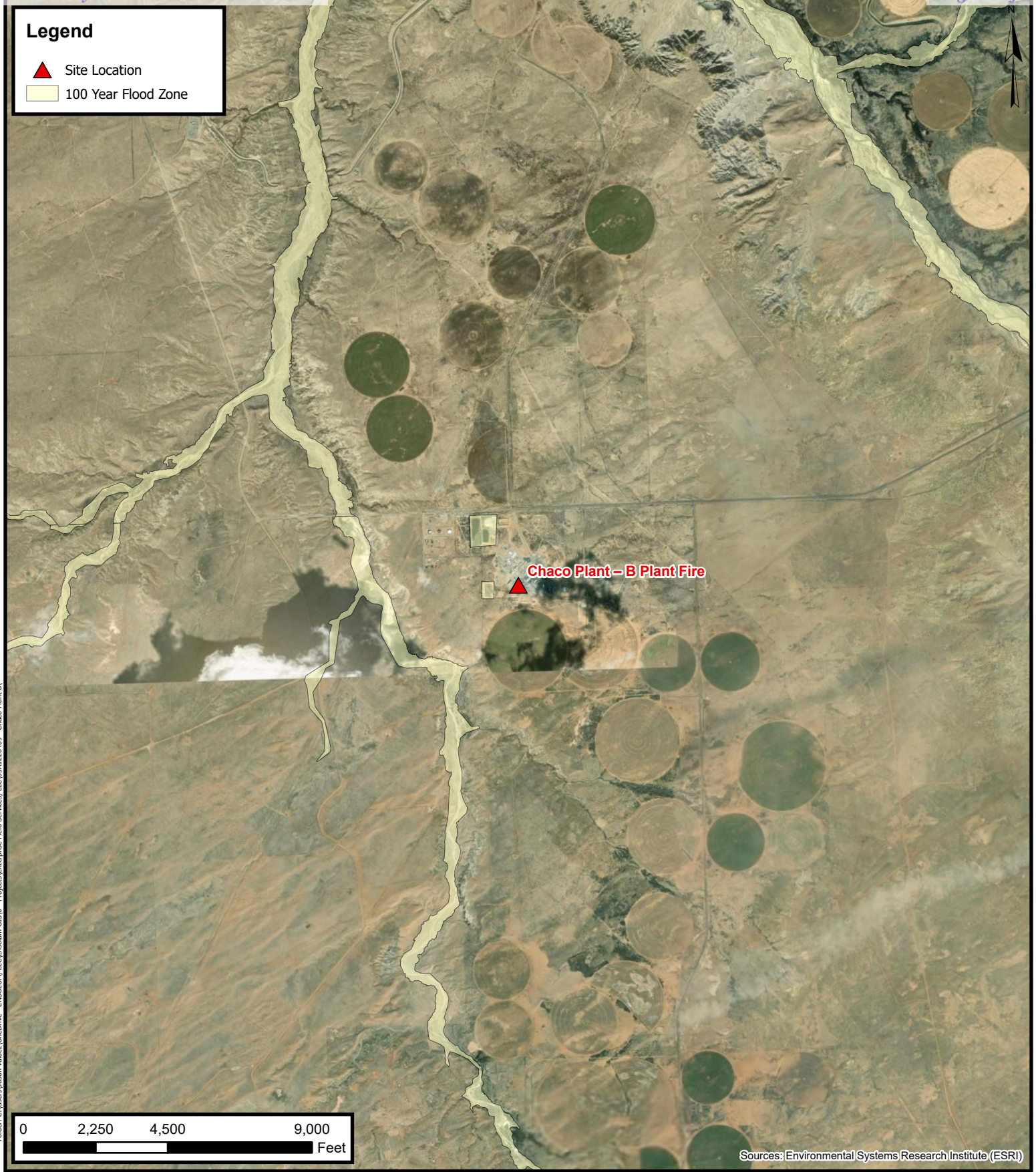


Sources: Environmental Systems Research Institute (ESRI)



Mines, Mills, and Quarries
 Enterprise Field Services, LLC
 Chaco Plant – B Plant Fire
 Project Number: 05A1226409
 Unit M, Section 16, T 26N, R 12W, San Juan County, New Mexico
 36.482090, -108.121991

FIGURE G



Folder: C:\Users\Justin Velez\OneDrive - ENSOLUM, LLC\Ensolium GIS\0 - Projects\Enterprise Field Services, LLC\05A1226409 - Chaco Plant B



100-Year Flood Plain Map

Enterprise Field Services, LLC

Chaco Plant – B Plant Fire

Project Number: 05A1226409

Unit M, Section 16, T 26N, R 12W, San Juan County, New Mexico
36.482090, -108.121991

FIGURE H



New Mexico Office of the State Engineer

Water Column/Average Depth to Water

(A CLW##### in the POD suffix indicates the POD has been replaced & no longer serves a water right file.) (R=POD has been replaced, O=orphaned, C=the file is closed) (quarters are smallest to largest)

(In feet)

POD Number	Code	Sub basin	County	Q64	Q16	Q4	Sec	Tws	Range	X	Y	Map	Well Depth	Depth Water	Water Column
SJ 04463 POD1		SJ	SJ		SE	SW	16	26N	12W	220433.4	4041900.8	●	20	20	0
SJ 04463 POD2		SJ	SJ		SE	SW	16	26N	12W	220415.1	4041900.1	●	20	20	0
SJ 04463 POD3		SJ	SJ		SE	SW	16	26N	12W	220433.7	4041873.7	●	20		
SJ 04463 POD4		SJ	SJ		SE	SW	16	26N	12W	220437.8	4041916.4	●	20	20	0

Average Depth to Water: **20 feet**

Minimum Depth: **20 feet**

Maximum Depth: **20 feet**

Record Count: 4

Basin/County Search:

Basin: SJ

PLSS Search:

Range: 12W

Township: 26N

Section: 8, 9,10,15,16,17,20,21,22

* UTM location was derived from PLSS - see Help

The data is furnished by the NMOSE/ISC and is accepted by the recipient with the expressed understanding that the OSE/ISC make no warranties, expressed or implied, concerning the accuracy, completeness, reliability, usability, or suitability for any particular purpose of the data.

Appendix B: Photographs

Photographs
Chaco Plant – B Plant Fire
UL M Section 16 T26N R26W; 36.482090, -108.121991
NMOCD Incident #nAPP2602936959

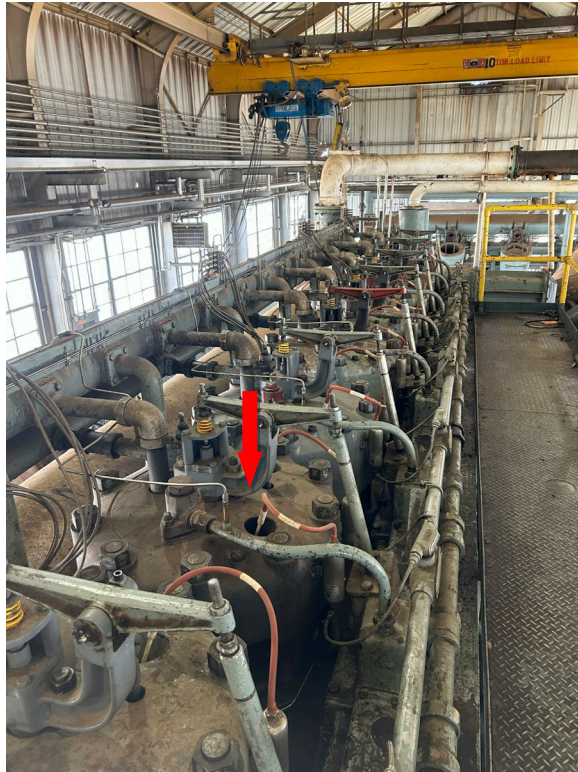


Photo 1: View of where the flash fire occurred.



Photo 2: View of where the flash fire occurred.

Photographs
Chaco Plant – B Plant Fire
UL M Section 16 T26N R26W; 36.482090, -108.121991
NMOCD Incident #nAPP2602936959



Photo 3: View of concrete floor below the compressor.



Photo 4: View of concrete floor below the compressor.

Sante Fe Main Office
Phone: (505) 476-3441

General Information
Phone: (505) 629-6116

Online Phone Directory
<https://www.emnrd.nm.gov/ocd/contact-us>

State of New Mexico
Energy, Minerals and Natural Resources
Oil Conservation Division
1220 S. St Francis Dr.
Santa Fe, NM 87505

QUESTIONS

Action 578564

QUESTIONS

Operator: Enterprise Field Services, LLC PO Box 4324 Houston, TX 77210	OGRID: 241602
	Action Number: 578564
	Action Type: [C-141] Initial C-141 (C-141-v-Initial)

QUESTIONS

Prerequisites	
Incident ID (n#)	nAPP2602936959
Incident Name	NAPP2602936959 CHACO PLANT - B PLANT @ N-16-26N-12W
Incident Type	Fire
Incident Status	Liner Report Approved

Location of Release Source

Please answer all the questions in this group.

Site Name	CHACO PLANT - B PLANT
Date Release Discovered	01/28/2026
Surface Owner	Private

Incident Details

Please answer all the questions in this group.

Incident Type	Fire
Did this release result in a fire or is the result of a fire	Yes
Did this release result in any injuries	No
Has this release reached or does it have a reasonable probability of reaching a watercourse	No
Has this release endangered or does it have a reasonable probability of endangering public health	No
Has this release substantially damaged or will it substantially damage property or the environment	No
Is this release of a volume that is or may with reasonable probability be detrimental to fresh water	No

Nature and Volume of Release

Material(s) released, please answer all that apply below. Any calculations or specific justifications for the volumes provided should be attached to the follow-up C-141 submission.

Crude Oil Released (bbls) Details	Not answered.
Produced Water Released (bbls) Details	Not answered.
Is the concentration of chloride in the produced water >10,000 mg/l	No
Condensate Released (bbls) Details	Not answered.
Natural Gas Vented (Mcf) Details	Cause: Equipment Failure Gasket Natural Gas Vented Released: 1 MCF Recovered: 0 MCF Lost: 1 MCF.
Natural Gas Flared (Mcf) Details	Not answered.
Other Released Details	Not answered.
Are there additional details for the questions above (i.e. any answer containing Other, Specify, Unknown, and/or Fire, or any negative lost amounts)	Not answered.

Sante Fe Main Office
Phone: (505) 476-3441

General Information
Phone: (505) 629-6116

Online Phone Directory
<https://www.emnrd.nm.gov/ocd/contact-us>

State of New Mexico
Energy, Minerals and Natural Resources
Oil Conservation Division
1220 S. St Francis Dr.
Santa Fe, NM 87505

QUESTIONS, Page 2

Action 578564

QUESTIONS (continued)

Operator: Enterprise Field Services, LLC PO Box 4324 Houston, TX 77210	OGRID: 241602
	Action Number: 578564
	Action Type: [C-141] Initial C-141 (C-141-v-Initial)

QUESTIONS

Nature and Volume of Release (continued)	
Is this a gas only submission (i.e. only significant Mcf values reported)	Yes, according to supplied volumes this appears to be a "gas only" report.
Was this a major release as defined by Subsection A of 19.15.29.7 NMAC	Yes
Reasons why this would be considered a submission for a notification of a major release	From paragraph A. "Major release" determine using: (2) an unauthorized release of a volume that: (a) results in a fire or is the result of a fire.
<i>With the implementation of the 19.15.27 NMAC (05/25/2021), venting and/or flaring of natural gas (i.e. gas only) are to be submitted on the C-129 form.</i>	

Initial Response

The responsible party must undertake the following actions immediately unless they could create a safety hazard that would result in injury.

The source of the release has been stopped	True
The impacted area has been secured to protect human health and the environment	True
Released materials have been contained via the use of berms or dikes, absorbent pads, or other containment devices	True
All free liquids and recoverable materials have been removed and managed appropriately	True
If all the actions described above have not been undertaken, explain why	Chaco B plant ESD at approximately 3:15 pm. Upon investigation it was determined that the fire eye on #1 TLA had caused ESD. Techs checked for source and found bonnet for #5-cylinder head had a small crack near gas valve. The fire eye detected a small flame that extinguished itself. No injuries, no liquids released, no emergency services responded, and no impact to the public.

Per Paragraph (4) of Subsection B of 19.15.29.8 NMAC the responsible party may commence remediation immediately after discovery of a release. If remediation has begun, please prepare and attach a narrative of actions to date in the follow-up C-141 submission. If remedial efforts have been successfully completed or if the release occurred within a lined containment area (see Subparagraph (a) of Paragraph (5) of Subsection A of 19.15.29.11 NMAC), please prepare and attach all information needed for closure evaluation in the follow-up C-141 submission.

I hereby certify that the information given above is true and complete to the best of my knowledge and understand that pursuant to OCD rules and regulations all operators are required to report and/or file certain release notifications and perform corrective actions for releases which may endanger public health or the environment. The acceptance of a C-141 report by the OCD does not relieve the operator of liability should their operations have failed to adequately investigate and remediate contamination that pose a threat to groundwater, surface water, human health or the environment. In addition, OCD acceptance of a C-141 report does not relieve the operator of responsibility for compliance with any other federal, state, or local laws and/or regulations.

I hereby agree and sign off to the above statement	Name: Thomas Long Title: Sr Field Environmental Scientist Email: tjlong@eprod.com Date: 04/23/2026
--	---

Sante Fe Main Office
Phone: (505) 476-3441

General Information
Phone: (505) 629-6116

Online Phone Directory
<https://www.emnrd.nm.gov/ocd/contact-us>

State of New Mexico
Energy, Minerals and Natural Resources
Oil Conservation Division
1220 S. St Francis Dr.
Santa Fe, NM 87505

QUESTIONS, Page 3

Action 578564

QUESTIONS (continued)

Operator: Enterprise Field Services, LLC PO Box 4324 Houston, TX 77210	OGRID: 241602
	Action Number: 578564
	Action Type: [C-141] Initial C-141 (C-141-v-Initial)

QUESTIONS

Site Characterization
Please answer all the questions in this group (only required when seeking remediation plan approval and beyond). This information must be provided to the appropriate district office no later than 90 days after the release discovery date.

What is the shallowest depth to groundwater beneath the area affected by the release in feet below ground surface (ft bgs)	Less than or equal 25 (ft.)
What method was used to determine the depth to ground water	Direct Measurement
Did this release impact groundwater or surface water	No
What is the minimum distance, between the closest lateral extents of the release and the following surface areas:	
A continuously flowing watercourse or any other significant watercourse	Between 1000 (ft.) and ½ (mi.)
Any lakebed, sinkhole, or playa lake (measured from the ordinary high-water mark)	Greater than 5 (mi.)
An occupied permanent residence, school, hospital, institution, or church	Between 1 and 5 (mi.)
A spring or a private domestic fresh water well used by less than five households for domestic or stock watering purposes	Greater than 5 (mi.)
Any other fresh water well or spring	Greater than 5 (mi.)
Incorporated municipal boundaries or a defined municipal fresh water well field	Greater than 5 (mi.)
A wetland	Between 1000 (ft.) and ½ (mi.)
A subsurface mine	Greater than 5 (mi.)
An (non-karst) unstable area	Greater than 5 (mi.)
Categorize the risk of this well / site being in a karst geology	Low
A 100-year floodplain	Between 1 and 5 (mi.)
Did the release impact areas not on an exploration, development, production, or storage site	No

Remediation Plan
Please answer all the questions that apply or are indicated. This information must be provided to the appropriate district office no later than 90 days after the release discovery date.

Requesting a remediation plan approval with this submission	No
---	----

The OCD recognizes that proposed remediation measures may have to be minimally adjusted in accordance with the physical realities encountered during remediation. If the responsible party has any need to significantly deviate from the remediation plan proposed, then it should consult with the division to determine if another remediation plan submission is required.

Sante Fe Main Office
Phone: (505) 476-3441

General Information
Phone: (505) 629-6116

Online Phone Directory
<https://www.emnrd.nm.gov/ocd/contact-us>

State of New Mexico
Energy, Minerals and Natural Resources
Oil Conservation Division
1220 S. St Francis Dr.
Santa Fe, NM 87505

CONDITIONS

Action 578564

CONDITIONS

Operator: Enterprise Field Services, LLC PO Box 4324 Houston, TX 77210	OGRID: 241602
	Action Number: 578564
	Action Type: [C-141] Initial C-141 (C-141-v-Initial)

CONDITIONS

Created By	Condition	Condition Date
michael.buchanan	Initial C-141 has been accepted for record. Enterprise has been notified in an email from the OCD sent on 04/24/2026 that the closure must be submitted AS a re-vegetation closure report to completely close the incident, as there were no liquids released and no soil beneath the fire was at risk.	5/4/2026