

<b>Spill Volume(Bbls) Calculator</b>		
<i>Inputs in blue, Outputs in red</i>		
Length(Ft)	Width(Ft)	Depth(In)
55.000	29.000	1.000
Cubic Feet Impacted		132.917
Barrels		23.67
Soil Type		Lined Containment
Bbls Assuming 100% Saturation		23.67
Saturation	Fluid present with shovel/backhoe	
Estimated Barrels Released		23.70000

<b>Instructions</b>
1. Input spill measurements below. Length and width need to be input in feet and depth in inches.
2. Select a soil type from the drop down menu.
3. Select a saturation level from the drop down menu.
(For data gathering instructions see appendix tab)

<b>Measurements</b>	
Length (ft)	55
Width (ft)	29
Depth (in)	1.000









CONTINENTAL STATE 15A TB

Incident ID nAPP2604831384

PREPARED BY:  
PIMA ENVIRONMENTAL SERVICES, LLC

PREPARED FOR:  
Spur Energy

Liner Inspection and Closure Report

April 27, 2026

FACILITY NAME	CONTINENTAL STATE 15A TB
DATE OF RELEASE	2/15/2026
INCIDENT NO.	nAPP2604831384



Pima Environmental Services  
 5614 N. Lovington Highway  
 Hobbs, NM 88240  
 575-964-7740

<b>Site Characterization</b>	
DTGW What is the shallowest DTGW beneath the area affected by the release in ft below ground surface (ft bgs)	Between 100 and 500 ft.
GW Depth Determination What method was used to determine the DTGW?	NM OSE iWaters Database Search
Ground or Surface Water Impacted Did this release impact GW or Surface Water?	No
<b>What is the min. distance between the closest lateral extents of the release and the following surace areas?</b>	
Distance to Watercourse A continuously flowing watercourse or any other significant watercourse?	> 5 mi.
Distance to Lakebed Any lakebed, sinkhole, or playa lake (measured from the ordinary high-water mark)?	> 5 mi.
Distance to Public An occupied permanent residence, school, hospital, institution, or church?	> 5 mi.
Distance to Private A spring or a private domestic FW well used by less than five households for domestic or stock watering purposes?	Between 1000 ft and 1/2 mi.
Distance to Fresh Water Any other FW well spring?	Between 1000 ft and 1/2 mi.
Within Municipal Boundaries Incorporated municipal boundaries or a defined municipal FW well field?	> 5 mi.
Distance to Wetland A wetland?	Between 500' and 1000'
Overlying Subsurface Mine A subsurface mine?	> 5 mi.
Overlying (Non-Karst) Unstable Area An (non-karst) unstable area?	> 5 mi.
Risk of Karst Geology Categorize the risk of this well/site being in a karst geology?	High
Distance to or Within 100 yr Floodplain A 100-year floodplain?	Between 1000 ft and 1/2 mi.
Areas NOT Other Site Did the release impact areas not on exploration, development, production, or storage site?	No
<b>Remediation Plan</b>	
Have the lateral and vertical extents of contamination been fully delineated?	Yes
Lined Containment Area Only Was this release entirely contained within a lined containment area?	Yes
<b>Soil Containment Sampling</b>	
Chloride Constituent Chloride (mg/kg)	(EPA 300.00 or SW4500 Cl B?) 0
(EPA SW-846 Method 8015M)?	
TPH (GRO+DRO+MRO) Constituent TPH (mg/kg)	0
(EPA SW-846 Method 8015M)?	
GRO + DRO Constituent GRO-DRO (mg/kg)	0
(EPA SW-846 Method 8021B or 8260B)?	
BTEX Constituent BTEX (mg/kg)	0
(EPA SW-846 Method 8021B or 8260B)?	
Benzene Constituent Benzene (mg/kg)	0
<b>Per Subsection B of 19.15.29.11 NMAC unless the site characterization report includes competed efforts at remediation, the report must include a proposed remediation plan in accordance with 19.15.29 NMAC, which includes the anticipated timelines for beginning and completing the remediation.</b>	
Start of Remediation On what estimated date will remediation commence?	3/15/2026
Start of Sampling or Liner Inspection On what date will (or did) the final sampling or liner inspection occur?	3/18/2026
Finish of Remediation On what date will (or was) the remediation complete(d)?	3/18/2026
Surface Area (sq ft) To Be Reclaimed What is the estimated surface area (in sq ft) that will be reclaimed?	0
Surface Area (sq ft) To Be Remediated What is the estimated surface are (in sq ft) that will be remediated?	5,000
Volume (cu yd) To Be Remediated What is the estimated volume (in cubic yds) that will be remediated?	20
<b>Remediation Plan (Cont.) Please answer all that apply</b>	
Ex Situ Excavation Off-Site (Ex Situ) Excavation and off-site disposal (i.e. dig and haul, hydrovac, etc)?	No
Ex Situ Excavation On-Site (Ex Situ) Excavation and on-site remediation (i.e. On-Site Land Farms)?	No
In Situ Soil Vapor Extraction (SVE)?	No
In Situ Chemical Processing (In Situ) Chemical processing (i.e. Soil Shredding, Potassium Permanganate, etc.)?	No
In Situ Biological Processing (In Situ) Biological processing (i.e. Microbes/Fertilizer, etc.)?	No
In Situ Physical Processing (In Situ) Physical processing (i.e. Soil Washing, Gypsum, Dinking, etc.)?	No
In Situ Ground Water Abatement GW Abatement pursuant to 19.15.30 NMAC?	No
Remediation Other Other (Non-listed remedial process)?	No
<b>Deferral Request Only</b>	
Requesting a deferral of the remediation closure due date with the approval of this submission	No

FACILITY NAME	CONTINENTAL STATE 15A TB
DATE OF RELEASE	2/15/2026
INCIDENT NO.	nAPP2604831384



Pima Environmental Services  
 5614 N. Lovington Highway  
 Hobbs, NM 88240  
 575-964-7740

Requesting a remediation closure approval with this submission?	Yes
Have the lateral and vertical extents of contamination been fully delineated?	Yes
Was this release entirely contained within a lined containment area?	Yes
<b>Restored Areas For Production Use</b> All areas reasonably needed for production or subsequent drilling operations have been stabilized, returned to the sites existing grade, and have a soil cover that prevents ponding of water, minimizing dust and erosion?	Yes
<b>Total Surface Area (sq ft) Remediated</b> What was the total surface area (sq ft) remediated?	5,000
<b>Total Volume (cu yd) Remediated</b> What was the total volume (cubic yards) remediated?	20
<b>Reclaimed to Condition Prior Release</b> All areas not reasonably needed for production or subsequent drilling operations have been reclaimed to contain a minimum of four ft of non-waste contain earthen material with concentrations less than 600 mg/kg chlorides, 100 mg/kg TPH, 50 mg/kg BTEX and 10 mg/kg Benzene?	Yes
<b>Total Surface Area (sq ft) Reclaimed</b> What was the total surface area (in sq ft) reclaimed?	0
<b>Remediation Summary</b> Summarize any additional remediaton activities not included by answers (above).	The impacted gravel was removed by a hand-shoveling crew. The lined containment was then power-washed, and all standing fluids were recovered using a vacuum truck. Following remediation, a liner inspection was conducted, confirming that the containment liner remained intact and maintained its integrity.



**Pima Environmental Services**  
**5614 N. Lovington Highway**  
**Hobbs, NM 88240**  
**575-964-7740**

April 27, 2026

NMOCD District 2  
811 S. First St  
Artesia, NM, 88210

**RE: Liner Inspection and Closure Report**  
**Continental State 15A TB**  
**Well API: N/A**  
**GPS: Latitude 32.836 Longitude -104.0657**  
**UL- F, Section 15, Township 17S, Range 29E**  
**NMOCD Reference No. nAPP2604831384**

Spur Energy Partners (Spur) has contracted Pima Environmental Services, LLC (Pima) to perform a liner inspection and prepare this closure report for the release of produced water that happened on the Continental State 15A TB (Site). An initial release was discovered on February 15, 2026. This incident was assigned Incident ID nAPP2604831384, by the New Mexico Oil Conservation Division (NMOCD).

#### **Site Information and Site Characterization**

The Site is located approximately 5.06 miles northwest of Loco Hills, NM. This spill site is in Unit F, Section 15, Township 17S, Range 29E, Latitude 32.836 Longitude -104.0657, Eddy County, NM. A Location Map can be found in Figure 1.

A review of well water data from the New Mexico Office of the State Engineer indicates that no registered water wells are located within a 0.5-mile radius of the site. This finding is corroborated by data from the United States Geological Survey, which similarly shows no water wells within the same distance of the site boundary. Detailed references to the surveys and mapped well locations are provided in Appendix A, including the associated figures. The site is situated within an area identified as having a high potential for karst development, as shown in Figure 3. A topographic map of the site and surrounding area is provided in Figure 2 to further illustrate the local terrain and geologic context.

#### **Release Information**

**nAPP2604831384:** On February 15, 2026, a 4-inch steel pipe body corroded, releasing produced water into the lined containment. Approximately 24 barrels of produced water were released. Spur personnel immediately initiated response actions and successfully recovered all fluids using a vacuum truck. No impacts occurred outside of the lined containment. A site map is provided in Figure 4.

#### **Site Assessment and Liner Inspection**

On March 15, 2026, Spur personnel submitted a notification for a liner inspection, adhering to the necessary 48-hour notice period. The details of the 48-hour notification can be referenced in Appendix C.

From March 15 to March 18, Pima Environmental mobilized a hand crew to the site and removed approximately 20 cubic yards of contaminated gravel from within the lined containment. The impacted material was loaded into a dump truck and transported to an NMOCD-approved landfill for disposal. Following removal of the impacted material, the liner was cleaned using a power washer, and residual fluids were recovered with a vacuum truck to ensure complete removal.

A thorough inspection of the lined containment was conducted after remediation activities, confirming that the system remained intact and effectively contained all fluids. As a result, the liner was deemed functional, with no further environmental impact observed. A detailed report, including photographic documentation, is provided in Appendices C and D.

**Closure Request**

After careful review, Pima requests that this incident nAPP2604831384 be closed. Spur has complied with the applicable closure requirements.

For questions or additional information, please feel free to contact:  
Spur Energy – Katherine Purvis at 575-441-8619 or [katherine.purvis@spurenergy.com](mailto:katherine.purvis@spurenergy.com)  
Pima Environmental Services – Sebastian Orozco at 619-721-4813 or [Sebastian@pimaoil.com](mailto:Sebastian@pimaoil.com).

**Attachments**

Figures:

- 1- Location Map
- 2- Topographic Map
- 3- Karst Map
- 4- Site Map

Appendices:

- Appendix A- Referenced Water Surveys
- Appendix B- Soil Survey, Geological Data, FEMA Flood Map, Wetland Map
- Appendix C-48 Hour Notification and Liner Inspection Form
- Appendix D- Photographic Documentation



## Figures:

Figure 1- Location Map

Figure 2- Topographic Map



Figure 3- Karst Map

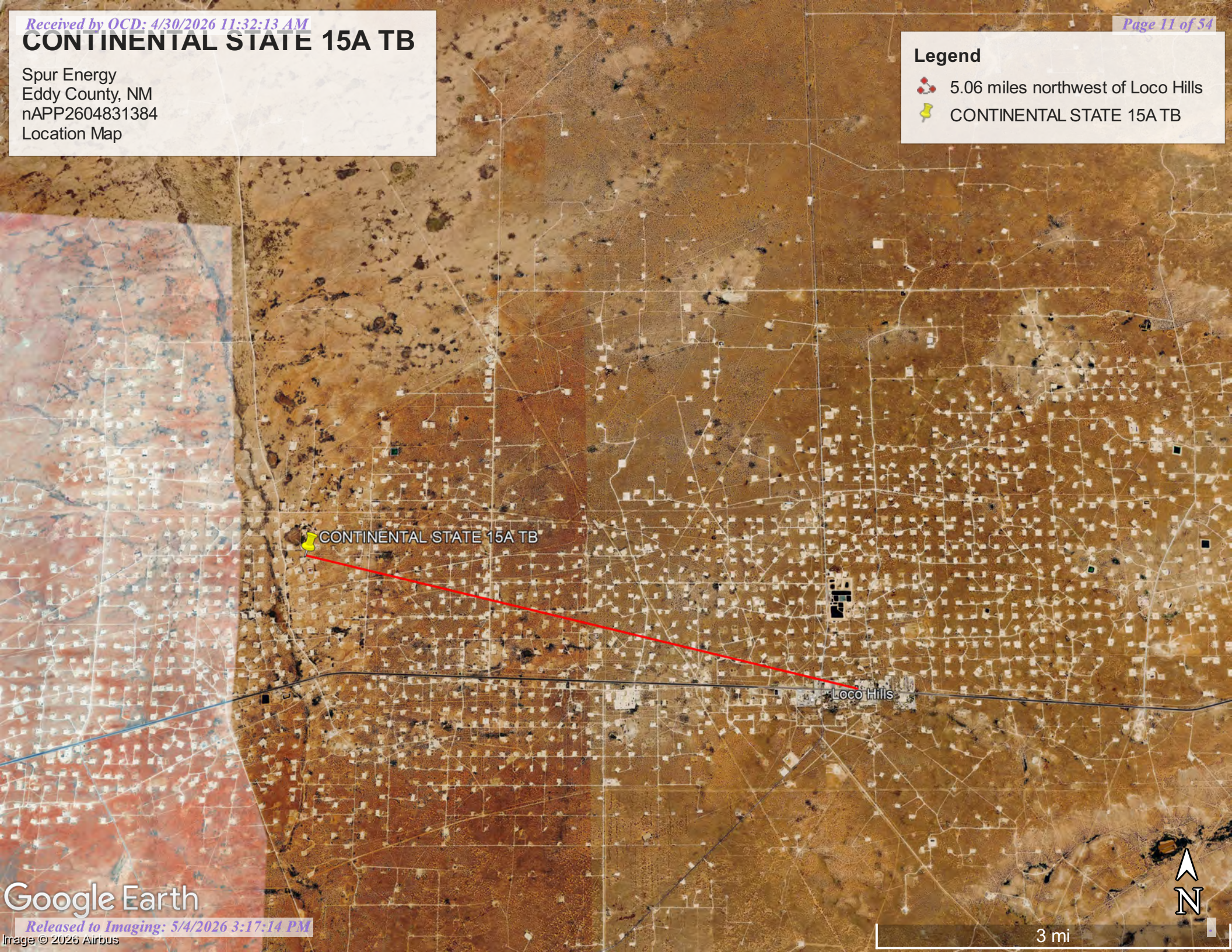
Figure 4- Site Map

# CONTINENTAL STATE 15A TB

Spur Energy  
Eddy County, NM  
nAPP2604831384  
Location Map

## Legend

-  5.06 miles northwest of Loco Hills
-  CONTINENTAL STATE 15A TB



CONTINENTAL STATE 15A TB


Loco Hills

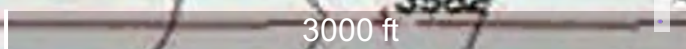
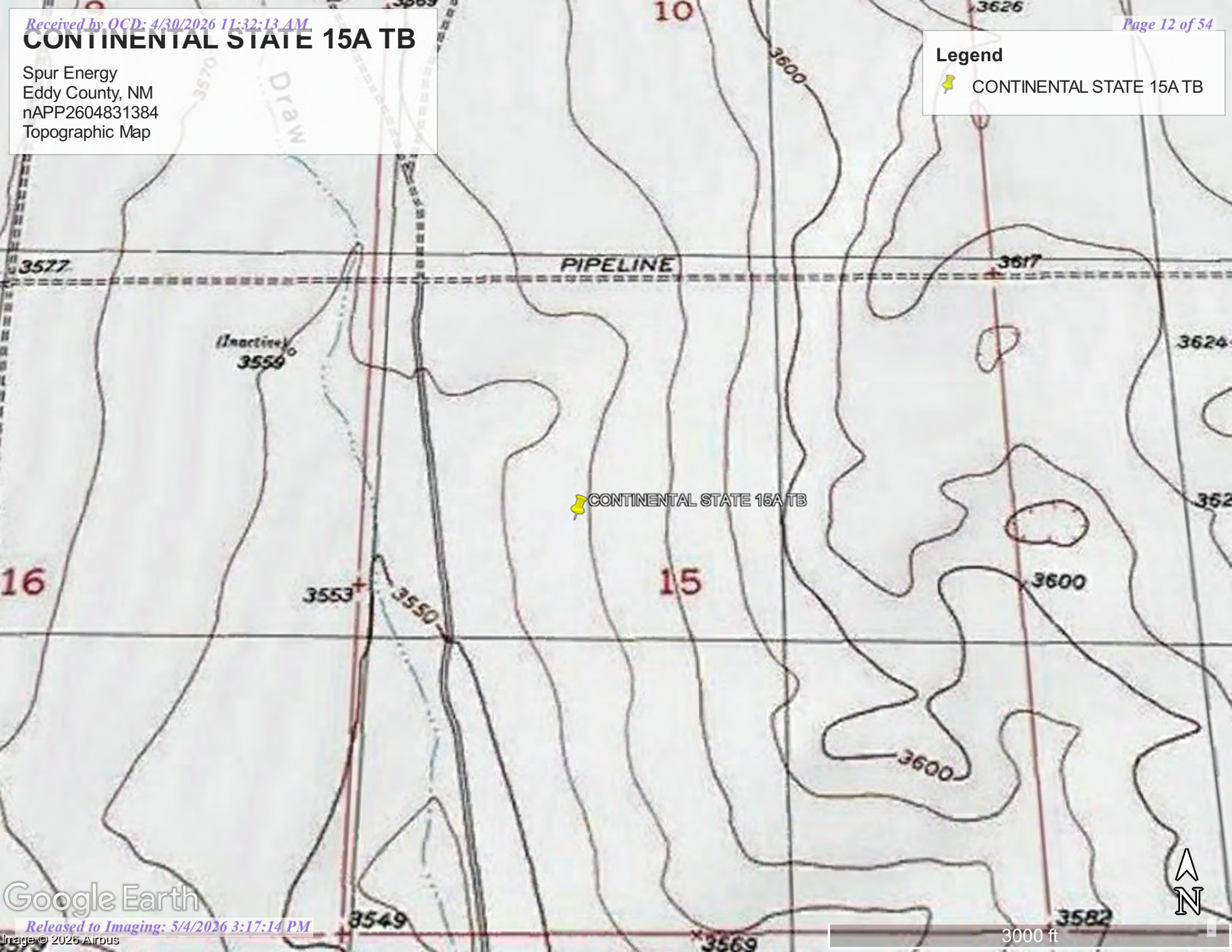


# CONTINENTAL STATE 15A TB

Spur Energy  
Eddy County, NM  
nAPP2604831384  
Topographic Map

**Legend**





-  CONTINENTAL STATE 15A TB

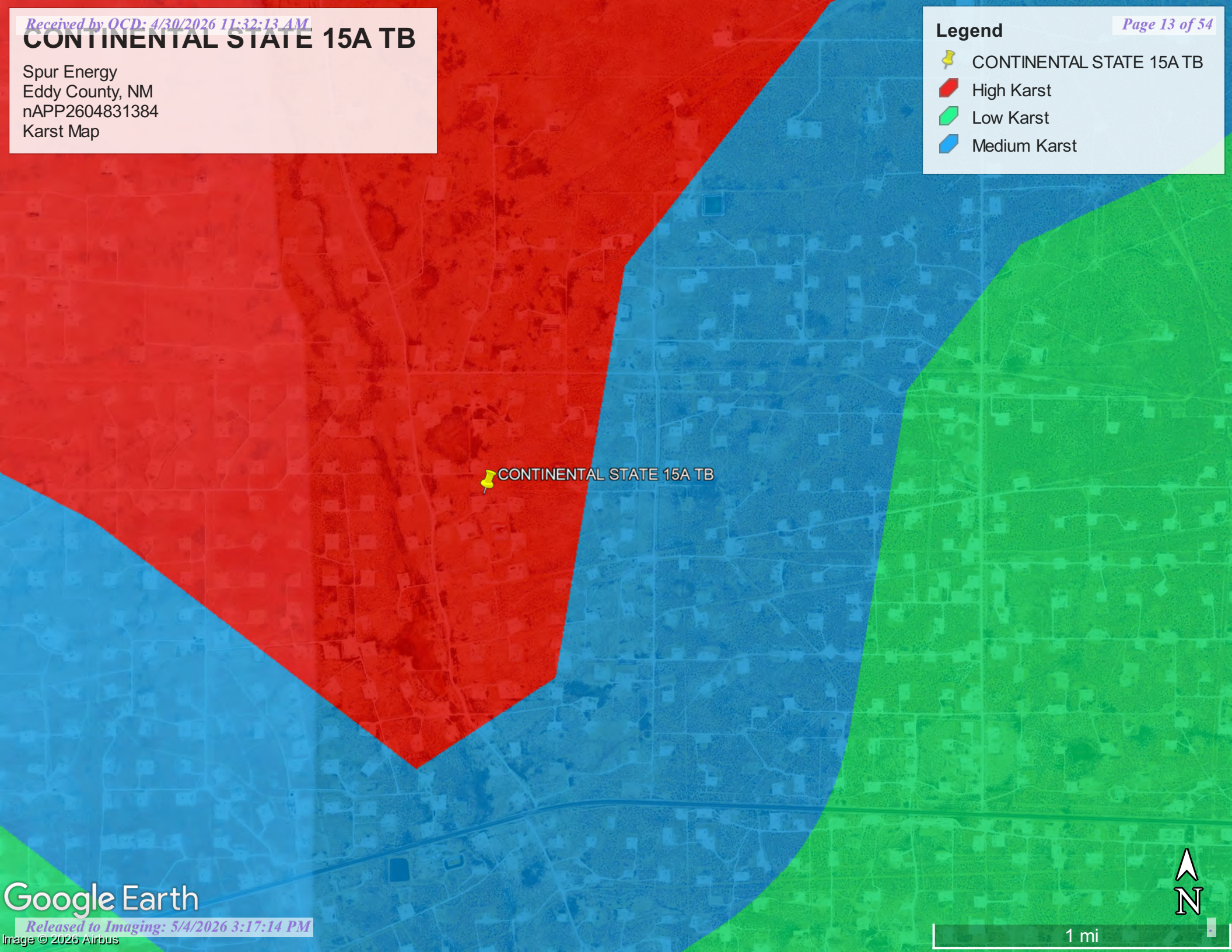


# CONTINENTAL STATE 15A TB

Spur Energy  
Eddy County, NM  
nAPP2604831384  
Karst Map

**Legend**


-  CONTINENTAL STATE 15A TB
-  High Karst
-  Low Karst
-  Medium Karst

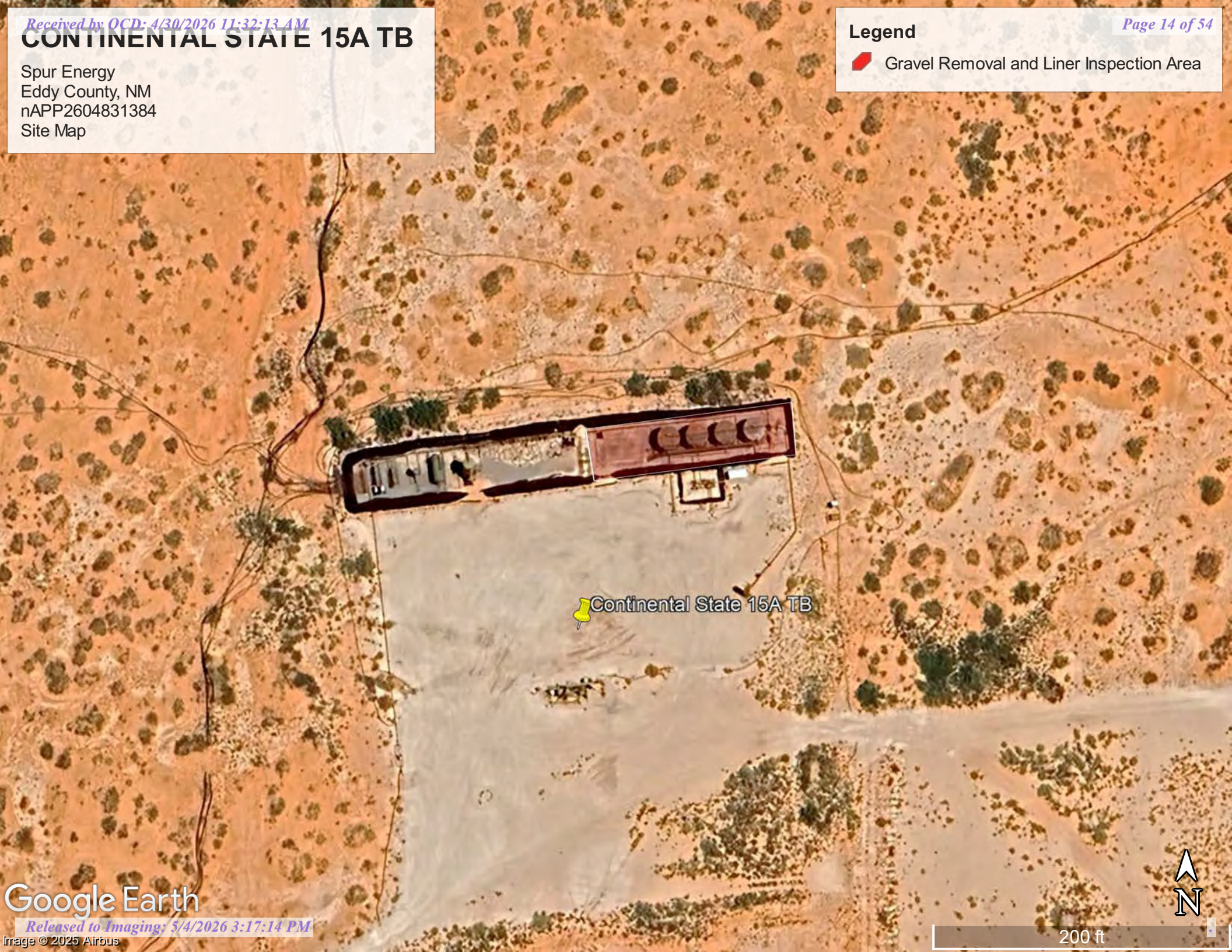



# CONTINENTAL STATE 15A TB

Spur Energy  
Eddy County, NM  
nAPP2604831384  
Site Map

## Legend

 Gravel Removal and Liner Inspection Area



 Continental State 15A TB





## Appendix A

### Water Surveys:

- OSE
- USGS
- Surface Water Map

## Point of Diversion Summary

quarters are 1=NW 2=NE 3=SW 4=SE  
quarters are smallest to largest

NAD83 UTM in meters

Well Tag	POD Nbr	Q64	Q16	Q4	Sec	Tws	Rng	X	Y	Map
NA	RA 13421 POD1	SW	SE	SW	16	17S	29E	585858.5	3632659.6	

\* UTM location was derived from PLSS - see Help

<b>Driller License:</b>	1249	<b>Driller Company:</b>	ATKINS ENGINEERING ASSOC. INC.
<b>Driller Name:</b>	JACKIE D ATKINS		
<b>Drill Start Date:</b>	2024-04-05	<b>Drill Finish Date:</b>	2024-04-05
<b>Plug Date:</b>	2024-04-05		
<b>Log File Date:</b>	2024-04-05	<b>PCW Rcv Date:</b>	
<b>Source:</b>			
<b>Pump Type:</b>		<b>Pipe Discharge Size:</b>	
<b>Estimated Yield:</b>			
<b>Casing Size:</b>		<b>Depth Well:</b>	105
<b>Depth Water:</b>			

The data is furnished by the NMOSE/ISC and is accepted by the recipient with the expressed understanding that the OSE/ISC make no warranties, expressed or implied, concerning the accuracy, completeness, reliability, usability, or suitability for any particular purpose of the data.

2/19/26 2:51 PM MST




Point of Diversion Summary

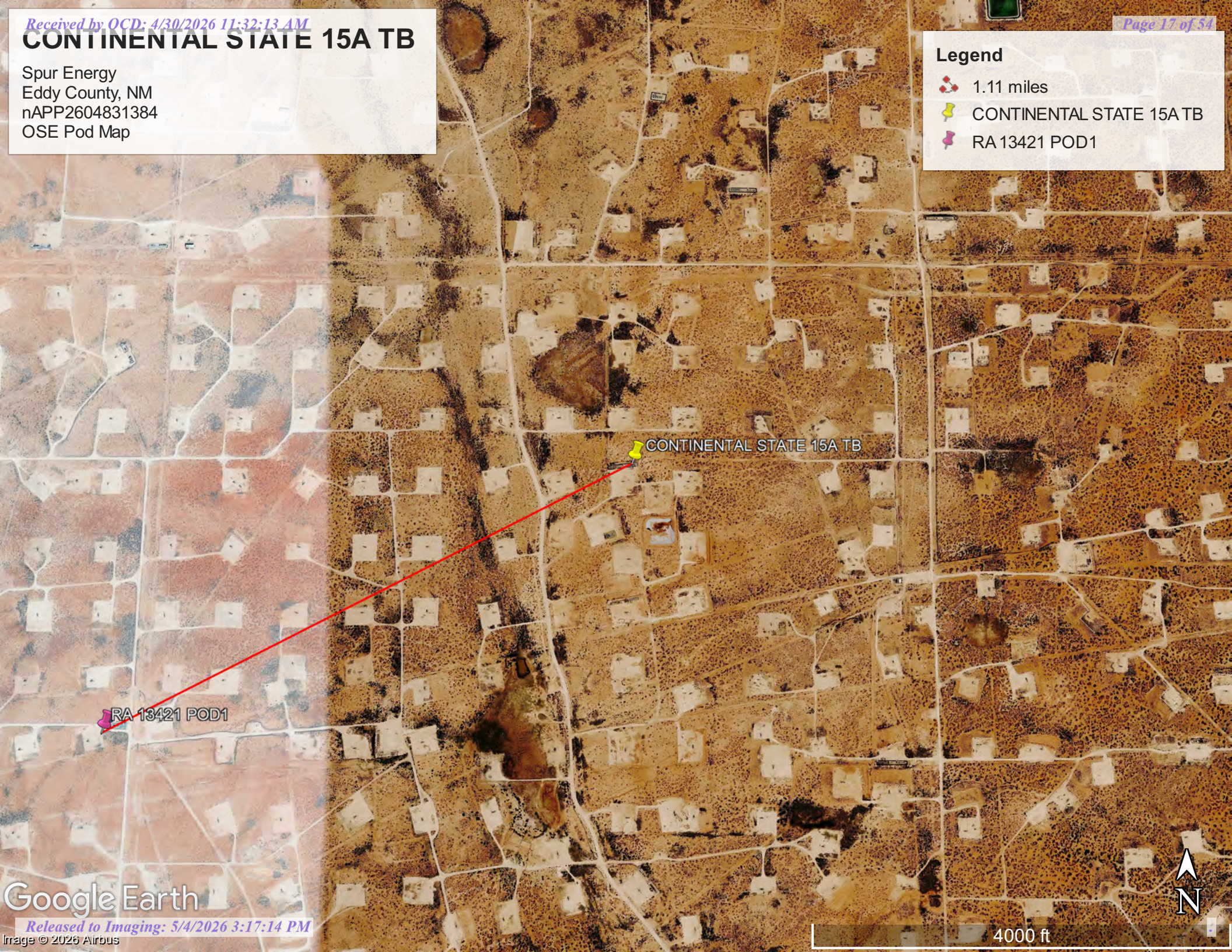
©2024 New Mexico Office of the State Engineer, All Rights Reserved. | [Disclaimer](#) | [Contact Us](#) | [Help](#) | [Home](#) |

# CONTINENTAL STATE 15A TB

Spur Energy  
Eddy County, NM  
nAPP2604831384  
OSE Pod Map

**Legend**

-  1.11 miles
-  CONTINENTAL STATE 15A TB
-  RA 13421 POD1



CONTINENTAL STATE 15A TB

RA 13421 POD1



## Monitoring location

17S.28E.35.42233 - USGS-324724104082301

**DID YOU KNOW** You can see all water data collected at this monitoring location in the *Available data* section of the page. ×  
Learn more about [centralized water data delivery](#) in WDFN.

1 year  10 years  Period of record

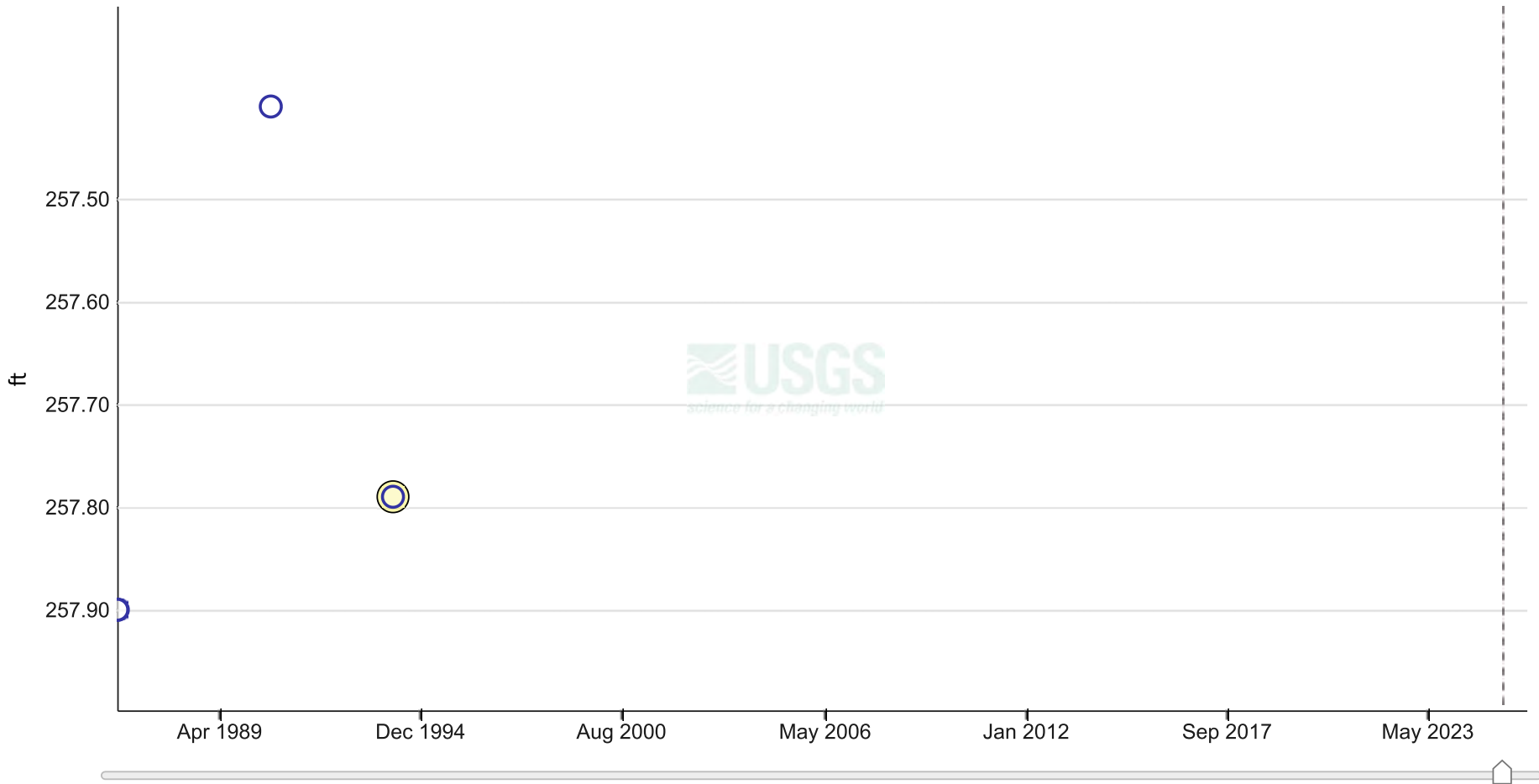
### Field measurements

**17S.28E.35.42233 - USGS-324724104082301**

May 21, 1986 - February 19, 2026

**Depth to water level, feet below land surface**

257.79 ft - Mar 01, 1994 05:00:00 AM MST



IMPORTANT Data may be [provisional](#)

[Show legend](#) ▾

Questions or Comments

[Hide graph details](#) ▲

	Value	Status	
Selected field measurement	257.79	Approved	Mar 01, 1994 05:00:00 AM MST

[Hide graph details](#) ▲

Change  
time span

Download  
data

View  
data records

## Available data

Show all data types

Select data types to graph from categories based on the way the data were collected.  
Learn about the data collection categories

### Continuous data

0 data types available

### Daily data

0 data types available

### Field measurements

3 data types available - data from 1986-05-21 to 1994-03-01

Hide these data types

Field measurements are physically measured values collected during a visit to the monitoring location.

[Learn about Field measurements](#)

	Data type	Data date range
Graphed	Depth to water level, feet below land surface	1986-05-21 1994-03-01
<a href="#">Graph it</a>	Groundwater level above NAVD 1988, feet	1986-05-21 1994-03-01
<a href="#">Graph it</a>	Groundwater level above NGVD 1929, feet	1986-05-21 1994-03-01

Hide these data types

### Discrete sample data

0 observed properties (data types) available

## Statistical tables for select daily data types

0 data types available

### Location details and information

Hide location details

Metadata Element	Location Metadata	Metadata Code
Agency ⓘ	U.S. Geological Survey	USGS
Location identification number ⓘ	324724104082301	n/a
Location name ⓘ	17S.28E.35.42233	n/a
Site type ⓘ	Well ⓘ	GW
Decimal latitude	32.7901155272589	n/a
Decimal longitude	-104.140233170416	n/a
Latitude-longitude method ⓘ	Interpolated from MAP.	M
Latitude-longitude accuracy ⓘ	Unknown or unspecified.	U
Latitude-longitude datum ⓘ	North American Datum of 1927	NAD27
District ⓘ	New Mexico	35
State ⓘ	New Mexico	35
County ⓘ	Eddy County	015

Metadata Element	Location Metadata	Metadata Code
Country	United States of America	n/a
Altitude of gage/land surface	3659 feet	n/a
Method altitude determined	Interpolated from topographic map.	M
Altitude accuracy	5 feet	n/a
Altitude datum ⓘ	National Geodetic Vertical Datum of 1929	NGVD29
Subbasin hydrologic unit ⓘ	Upper Pecos-Black	13060011
Drainage basin ⓘ		n/a
Date of first construction ⓘ		n/a
Drainage area ⓘ		n/a
Contributing drainage area		n/a
Time zone abbreviation	MST	n/a
Site honors Daylight Saving Time ⓘ	Y	n/a
National aquifer	Other aquifers	N9999OTHER
Local aquifer	Rustler Formation	312RSLR
Local aquifer type	Confined single aquifer	C
Well depth	280 feet	n/a

Metadata Element	Location Metadata	Metadata Code
Hole depth ⓘ		n/a
Source of depth data	A	n/a

## Monitoring locations with continuous data in last 120 days

3 locations found

[View these locations in My Favorites](#)

[Use Explore USGS Water Data to discover additional data near this location](#)






Interested in understanding how to access the upstream/downstream data? [Learn about the Network-Linked Data Index \(NLDI\)](#).

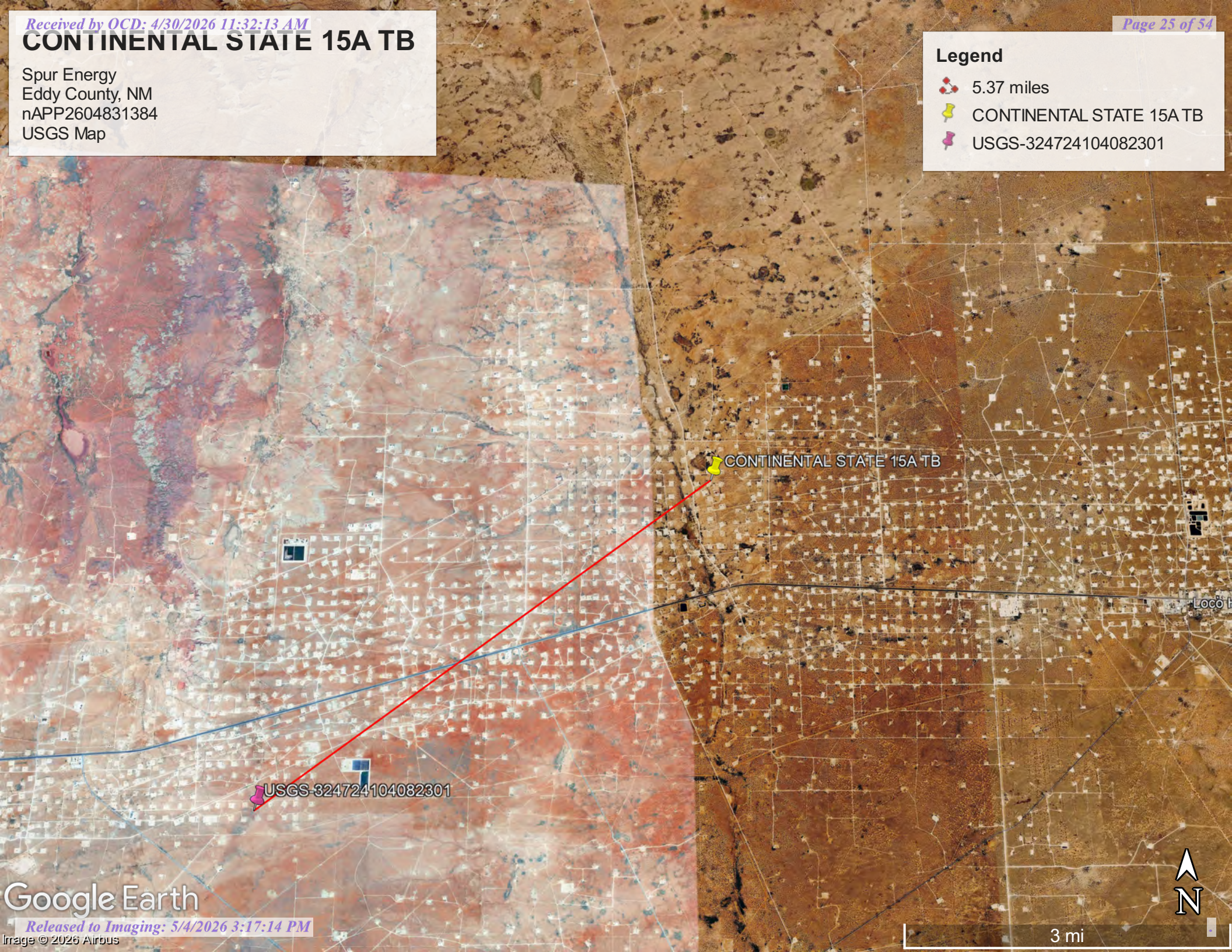
U.S. Department of the Interior | DOI Inspector General | White House | No Fear Act | FOIA

# CONTINENTAL STATE 15A TB

Spur Energy  
Eddy County, NM  
nAPP2604831384  
USGS Map

**Legend**

-  5.37 miles
-  CONTINENTAL STATE 15A TB
-  USGS-324724104082301



CONTINENTAL STATE 15A TB

USGS-324724104082301




Loco H



# CONTINENTAL STATE 15A TB

Spur Energy  
Eddy County, NM  
nAPP2604831384  
Surface Water Map

**Legend**

-  0.43 miles
-  CONTINENTAL STATE 15A TB
-  Riverine



CONTINENTAL STATE 15A TB

Riverine

Google Earth



900 ft



## Appendix B

- Soil Survey & Soil Maps
- Geological Data
- FEMA Flood Map
- Wetlands Map

Map Unit Description: Reeves-Gypsum land complex, 0 to 3 percent slopes---Eddy Area, New Mexico

---

## Eddy Area, New Mexico

### RG—Reeves-Gypsum land complex, 0 to 3 percent slopes

#### Map Unit Setting

*National map unit symbol:* 1w5f  
*Landscape:* Uplands  
*Elevation:* 1,250 to 5,000 feet  
*Mean annual precipitation:* 10 to 25 inches  
*Mean annual air temperature:* 57 to 70 degrees F  
*Frost-free period:* 190 to 235 days  
*Farmland classification:* Not prime farmland

#### Map Unit Composition

*Reeves and similar soils:* 55 percent  
*Gypsum land:* 30 percent  
*Minor components:* 15 percent  
*Estimates are based on observations, descriptions, and transects of the mapunit.*

#### Description of Reeves

##### Setting

*Landscape:* Uplands  
*Landform:* Gypsum hills, Gypsum plains, Gypsum ridges  
*Landform position (two-dimensional):* Shoulder, backslope, footslope, toeslope  
*Landform position (three-dimensional):* Side slope, head slope, nose slope, crest  
*Down-slope shape:* Convex  
*Across-slope shape:* Linear  
*Parent material:* Residuum weathered from gypsum

##### Typical profile

*H1 - 0 to 8 inches:* loam  
*H2 - 8 to 32 inches:* clay loam  
*H3 - 32 to 60 inches:* gypsiferous material

##### Properties and qualities

*Slope:* 0 to 1 percent  
*Depth to restrictive feature:* More than 80 inches  
*Drainage class:* Well drained  
*Runoff class:* High  
*Capacity of the most limiting layer to transmit water (Ksat):* Very low to moderately low (0.00 to 0.06 in/hr)  
*Depth to water table:* More than 80 inches  
*Frequency of flooding:* None  
*Frequency of ponding:* None  
*Calcium carbonate, maximum content:* 25 percent  
*Gypsum, maximum content:* 80 percent  
*Maximum salinity:* Very slightly saline to moderately saline (2.0 to 8.0 mmhos/cm)

Map Unit Description: Reeves-Gypsum land complex, 0 to 3 percent slopes---Eddy Area, New Mexico

---

*Sodium adsorption ratio, maximum:* 4.0  
*Available water supply, 0 to 60 inches:* Low (about 4.3 inches)

#### **Interpretive groups**

*Land capability classification (irrigated):* 3s  
*Land capability classification (nonirrigated):* 7s  
*Hydrologic Soil Group:* B  
*Ecological site:* R070BC007NM - Loamy  
*Hydric soil rating:* No

#### **Description of Gypsum Land**

##### **Setting**

*Landscape:* Uplands  
*Landform:* Low gypsum hills, Gypsum plains, Gypsum ridges  
*Landform position (two-dimensional):* Shoulder, backslope, footslope, toeslope  
*Landform position (three-dimensional):* Side slope, head slope, nose slope, crest  
*Down-slope shape:* Convex  
*Across-slope shape:* Linear  
*Parent material:* Residuum weathered from gypsum

##### **Interpretive groups**

*Land capability classification (irrigated):* None specified  
*Land capability classification (nonirrigated):* 8s  
*Hydric soil rating:* No

#### **Minor Components**

##### **Largo**

*Percent of map unit:* 5 percent  
*Ecological site:* R070BC007NM - Loamy  
*Hydric soil rating:* No

##### **Reagan**

*Percent of map unit:* 5 percent  
*Ecological site:* R070BC007NM - Loamy  
*Hydric soil rating:* No

##### **Cottonwood**

*Percent of map unit:* 5 percent  
*Ecological site:* R070BC033NM - Salty Bottomland  
*Hydric soil rating:* No

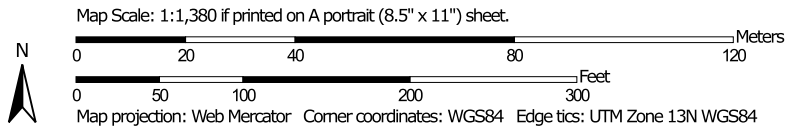
## **Data Source Information**

Soil Survey Area: Eddy Area, New Mexico  
Survey Area Data: Version 21, Sep 9, 2025

Soil Map—Eddy Area, New Mexico




Soil Map may not be valid at this scale.




### MAP LEGEND

**Area of Interest (AOI)**

 Area of Interest (AOI)




















**Soils**



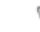


 Soil Map Unit Polygons

 Soil Map Unit Lines


 Soil Map Unit Points

**Special Point Features**






-  Blowout
-  Borrow Pit
-  Clay Spot
-  Closed Depression
-  Gravel Pit
-  Gravelly Spot
-  Landfill
-  Lava Flow
-  Marsh or swamp
-  Mine or Quarry
-  Miscellaneous Water
-  Perennial Water
-  Rock Outcrop
-  Saline Spot
-  Sandy Spot
-  Severely Eroded Spot
-  Sinkhole
-  Slide or Slip
-  Sodic Spot

-  Spoil Area
-  Stony Spot
-  Very Stony Spot
-  Wet Spot
-  Other
-  Special Line Features

**Water Features**

 Streams and Canals

**Transportation**

-  Rails
-  Interstate Highways
-  US Routes
-  Major Roads
-  Local Roads

**Background**

 Aerial Photography

### MAP INFORMATION

The soil surveys that comprise your AOI were mapped at 1:20,000.

Warning: Soil Map may not be valid at this scale.  
 Enlargement of maps beyond the scale of mapping can cause misunderstanding of the detail of mapping and accuracy of soil line placement. The maps do not show the small areas of contrasting soils that could have been shown at a more detailed scale.

Please rely on the bar scale on each map sheet for map measurements.

Source of Map: Natural Resources Conservation Service  
 Web Soil Survey URL:  
 Coordinate System: Web Mercator (EPSG:3857)

Maps from the Web Soil Survey are based on the Web Mercator projection, which preserves direction and shape but distorts distance and area. A projection that preserves area, such as the Albers equal-area conic projection, should be used if more accurate calculations of distance or area are required.

This product is generated from the USDA-NRCS certified data as of the version date(s) listed below.

Soil Survey Area: Eddy Area, New Mexico  
 Survey Area Data: Version 21, Sep 9, 2025

Soil map units are labeled (as space allows) for map scales 1:50,000 or larger.

Date(s) aerial images were photographed: Nov 12, 2022—Dec 2, 2022

The orthophoto or other base map on which the soil lines were compiled and digitized probably differs from the background imagery displayed on these maps. As a result, some minor shifting of map unit boundaries may be evident.

## Map Unit Legend

Map Unit Symbol	Map Unit Name	Acres in AOI	Percent of AOI
RG	Reeves-Gypsum land complex, 0 to 3 percent slopes	8.0	100.0%
<b>Totals for Area of Interest</b>		<b>8.0</b>	<b>100.0%</b>

(<https://www.usgs.gov/>)

Mineral Resources (<https://www.usgs.gov/energy-and-minerals/mineral-resources-program>)  
/ Online Spatial Data (/) / Geology (/geology/) / by state (/geology/state/)  
/ New Mexico (/geology/state/state.php?state=NM)

## Alluvium

[XML \(/geology/state/xml/NMQa;0\)](/geology/state/xml/NMQa;0)

[JSON \(/geology/state/json/NMQa;0\)](/geology/state/json/NMQa;0)

[Shapefile \(/geology/state/unit-shape.php?unit=NMQa;0\)](/geology/state/unit-shape.php?unit=NMQa;0)

*Alluvium*

<b>State</b>	New Mexico ( <a href="/geology/state/state.php?state=NM">/geology/state/state.php?state=NM</a> )
<b>Name</b>	Alluvium
<b>Geologic age</b>	Holocene to upper Pleistocene
<b>Lithologic constituents</b>	Major Unconsolidated ( <i>Alluvial</i> )
<b>References</b>	<p>Green, G.N., Jones, G.E., and Anderson, O.J., 1997, The Digital Geologic Map of New Mexico in ARC/INFO Format: U.S. Geological Survey Open-File Report 97-0052, 9 p., scale 1:500,000.</p> <p><a href="https://pubs.er.usgs.gov/publication/ofr9752">https://pubs.er.usgs.gov/publication/ofr9752</a> (<a href="https://pubs.er.usgs.gov/publication/ofr9752">https://pubs.er.usgs.gov/publication/ofr9752</a>)</p>

<b>NGMDB product</b>	<p>NGMDB product page for 59219  <a href="https://ngmdb.usgs.gov/Prodesc/proddesc_59219.htm">https://ngmdb.usgs.gov/Prodesc/proddesc_59219.htm</a>)</p> <p>NGMDB product page for 22974  <a href="https://ngmdb.usgs.gov/Prodesc/proddesc_22974.htm">https://ngmdb.usgs.gov/Prodesc/proddesc_22974.htm</a>)</p>
<b>Counties</b>	<p>Bernalillo (/geology/state/fips-unit.php?code=f35001) - Catron (/geology/state/fips-unit.php?code=f35003) - Chaves (/geology/state/fips-unit.php?code=f35005) - Cibola (/geology/state/fips-unit.php?code=f35006) - Colfax (/geology/state/fips-unit.php?code=f35007) - Curry (/geology/state/fips-unit.php?code=f35009) - DeBaca (/geology/state/fips-unit.php?code=f35011) - Dona Ana (/geology/state/fips-unit.php?code=f35013) - Eddy (/geology/state/fips-unit.php?code=f35015) - Grant (/geology/state/fips-unit.php?code=f35017) - Guadalupe (/geology/state/fips-unit.php?code=f35019) - Harding (/geology/state/fips-unit.php?code=f35021) - Hidalgo (/geology/state/fips-unit.php?code=f35023) - Lea (/geology/state/fips-unit.php?code=f35025) - Lincoln (/geology/state/fips-unit.php?code=f35027) - Luna (/geology/state/fips-unit.php?code=f35029) - McKinley (/geology/state/fips-unit.php?code=f35031) - Mora (/geology/state/fips-unit.php?code=f35033) - Otero (/geology/state/fips-unit.php?code=f35035) - Quay (/geology/state/fips-unit.php?code=f35037) - Rio Arriba (/geology/state/fips-unit.php?code=f35039) - Roosevelt (/geology/state/fips-unit.php?code=f35041) - Sandoval (/geology/state/fips-unit.php?code=f35043) - San Juan (/geology/state/fips-unit.php?code=f35045) - San Miguel (/geology/state/fips-unit.php?code=f35047) - Santa Fe (/geology/state/fips-unit.php?code=f35049) - Sierra (/geology/state/fips-unit.php?code=f35051) - Socorro (/geology/state/fips-unit.php?code=f35053) - Taos (/geology/state/fips-unit.php?code=f35055) - Torrance (/geology/state/fips-unit.php?code=f35057) - Union (/geology/state/fips-unit.php?code=f35059) - Valencia (/geology/state/fips-unit.php?code=f35061)</p>

U.S. Department of the Interior (<https://www.doi.gov/>) | DOI Inspector General (<https://www.doi.ig.gov/>) | White House (<https://www.whitehouse.gov/>) |  
E-gov (<https://www.whitehouse.gov/omb/management/egov/>) | No Fear Act (<https://www.doi.gov/pmb/eeo/no-fear-act>) | FOIA (<https://www2.usgs.gov/foia>)




# CONTINENTAL STATE 15A TB

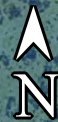
Spur Energy  
Eddy County, NM  
nAPP2604831384  
Geological Map



CONTINENTAL STATE 15A TB

### Legend

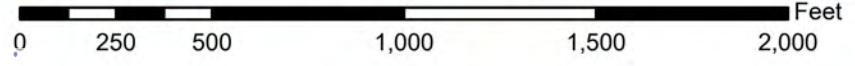
-  Alluvium
-  CONTINENTAL STATE 15A TB
-  Older alluvial deposits of upland plains, piedmont areas, calcic soils, eolian cover sediments of High Plains region



# National Flood Hazard Layer FIRMette



104°4'15"W 32°50'25"N



1:6,000

104°3'38"W 32°49'54"N

Basemap Imagery Source: USGS National Map 2023

### Legend

SEE FIS REPORT FOR DETAILED LEGEND AND INDEX MAP FOR FIRM PANEL LAYOUT

SPECIAL FLOOD HAZARD AREAS		Without Base Flood Elevation (BFE) Zone A, V, A99
		With BFE or Depth Zone AE, AO, AH, VE, AR
		Regulatory Floodway
OTHER AREAS OF FLOOD HAZARD		0.2% Annual Chance Flood Hazard, Areas of 1% annual chance flood with average depth less than one foot or with drainage areas of less than one square mile
		Future Conditions 1% Annual Chance Flood Hazard Zone X
		Area with Reduced Flood Risk due to Levee. See Notes. Zone X
		Area with Flood Risk due to Levee
OTHER AREAS		NO SCREEN Area of Minimal Flood Hazard Zone X
		Effective LOMRs
GENERAL STRUCTURES		Area of Undetermined Flood Hazard Zone D
		Channel, Culvert, or Storm Sewer
OTHER FEATURES		Levee, Dike, or Floodwall
		20.2 Cross Sections with 1% Annual Chance Water Surface Elevation
MAP PANELS		17.5 Coastal Transect
		Base Flood Elevation Line (BFE)
OTHER FEATURES		Limit of Study
		Jurisdiction Boundary
OTHER FEATURES		Coastal Transect Baseline
		Profile Baseline
OTHER FEATURES		Hydrographic Feature
		Digital Data Available
MAP PANELS		No Digital Data Available
		Unmapped

The pin displayed on the map is an approximate point selected by the user and does not represent an authoritative property location.

This map complies with FEMA's standards for the use of digital flood maps if it is not void as described below. The basemap shown complies with FEMA's basemap accuracy standards

The flood hazard information is derived directly from the authoritative NFHL web services provided by FEMA. This map was exported on 2/19/2026 at 9:31 PM and does not reflect changes or amendments subsequent to this date and time. The NFHL and effective information may change or become superseded by new data over time.

This map image is void if the one or more of the following map elements do not appear: basemap imagery, flood zone labels, legend, scale bar, map creation date, community identifiers, FIRM panel number, and FIRM effective date. Map images for unmapped and unmodernized areas cannot be used for regulatory purposes.

Released to Imaging: 5/11/2026 3:17:14 PM

Received by OCD: 4/20/2026 11:32:13 AM

Page 37 of 54



February 19, 2026

**Wetlands**

- |  |                                |  |                                   |  |       |
|--|--------------------------------|--|-----------------------------------|--|-------|
|  | Estuarine and Marine Deepwater |  | Freshwater Emergent Wetland       |  | Lake  |
|  | Estuarine and Marine Wetland   |  | Freshwater Forested/Shrub Wetland |  | Other |
|  | Freshwater Pond                |  | Riverine                          |  |       |

This map is for general reference only. The US Fish and Wildlife Service is not responsible for the accuracy or currentness of the base data shown on this map. All wetlands related data should be used in accordance with the layer metadata found on the Wetlands Mapper web site.



## Appendix C

- 48-Hour Notification
- Liner Inspection Form

**Sebastian@pimaoil.com**

---

**From:** OCDOnline@emnrd.nm.gov  
**Sent:** Sunday, March 15, 2026 5:23 PM  
**To:** sebastian@pimaoil.com  
**Subject:** The Oil Conservation Division (OCD) has accepted the application, Application ID: 562993

To whom it may concern (c/o Sebastian Orozco for Spur Energy Partners LLC),

The OCD has received the submitted *Notification for Liner Inspection for a Release (C-141L)*, for incident ID (n#) nAPP2604831384.

The liner inspection is expected to take place:

**When:** 03/18/2026 @ 14:00

**Where:** F-15-17S-29E 0 FNL 0 FEL (32.836,-104.0657)

**Additional Information:** Pima Environmental Services  
619-721-4813

**Additional Instructions:** 32.835633,-104.065980

An OCD representative may be available onsite at the date and time reported. In the absence or presence of an OCD representative, liner inspection pursuant to 19.15.29.11.A(5)(a) NMAC is required. Should there be a change in the scheduled date and time of the sampling event, then another notification should be resubmitted through OCD permitting as soon as possible.

- **Failure to notify the OCD of liner inspections including any changes in date/time per the requirements of 19.15.29.11.A(5)(a)(ii) NMAC, may result in the inspection not being accepted.**

If you have any questions regarding this application, or don't know why you have received this email, please contact us.

**New Mexico Energy, Minerals and Natural Resources Department**  
1220 South St. Francis Drive  
Santa Fe, NM 87505



Pima Environmental Services, LLC

**Liner Inspection Form**

Company Name: Spur Energy

Site: CONTINENTAL STATE 15A TB

Lat/Long: 32.836,-104.0657

NMOCD Incident ID & Incident Date: nAPP2604831384 02/15/2026

2-Day Notification Sent: via OCD portal 03/15/2026

Inspection Date: 03/18/2026

Liner Type:  Earthen w/liner       Earthen no liner       Polystar  
 Steel w/poly liner       Steel w/spray epoxy       No Liner

Other: \_\_\_\_\_

Visualization	Yes	No	Comments
Is there a tear in the liner?		X	
Are there holes in the liner?		X	
Is the liner retaining any fluids?	X		Standing fluid is visible inside the lined containment due to power washing efforts.
Does the liner have integrity to contain a leak?	X		

Comments: \_\_\_\_\_

Inspector Name: Andrew Franco      Inspector Signature: Andrew Franco



## Appendix D

- Photographic Documentation



### PHOTOGRAPHIC DOCUMENTATION

**SITE NAME: Continetal State 15A TB**

**Initial Assessment :**



Photograph taken during the initial site assessment facing southeast.



Photograph taken during the initial site assessment facing southwest.



Photograph taken during the initial site assessment facing north.



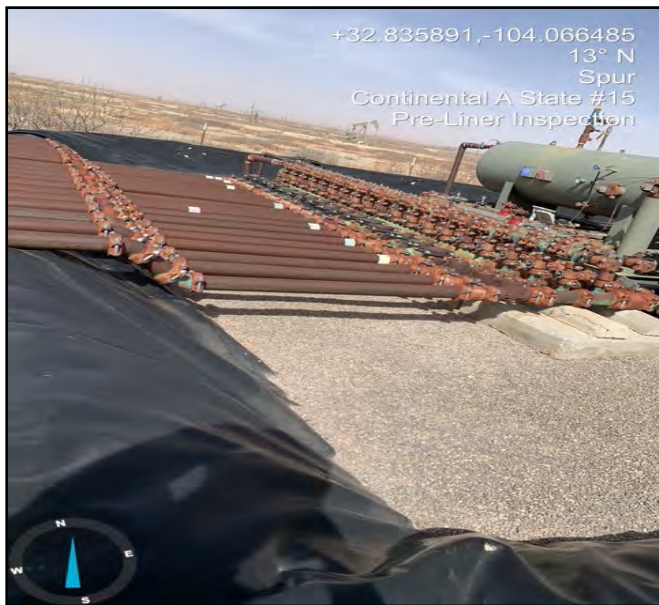
Photograph taken during the initial site assessment facing northwest.



Photograph taken during the initial site assessment facing southwest.



Photograph taken during the initial site assessment facing west.



Photograph taken during the initial site assessment facing north.

### PHOTOGRAPHIC DOCUMENTATION

**SITE NAME: Continetal State 15A TB**

**Gravel Removal :**



Photograph taken during the gravel removal process facing northwest.



Photograph taken during the gravel removal process facing north.



Photograph taken during the gravel removal process facing southwest.

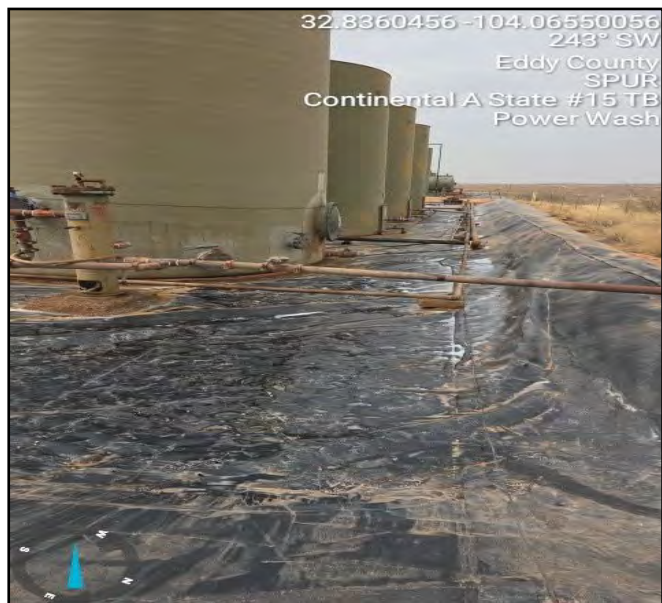


Photograph taken during the gravel removal process facing southeast.

### PHOTOGRAPHIC DOCUMENTATION

**SITE NAME: Continetal State 15A TB**

**Powerwash :**



Photograph taken post powerwash facing southwest.



Photograph taken post powerwash facing northeast.



Photograph taken post powerwash facing southeast.



Photograph taken post powerwash facing northwest.

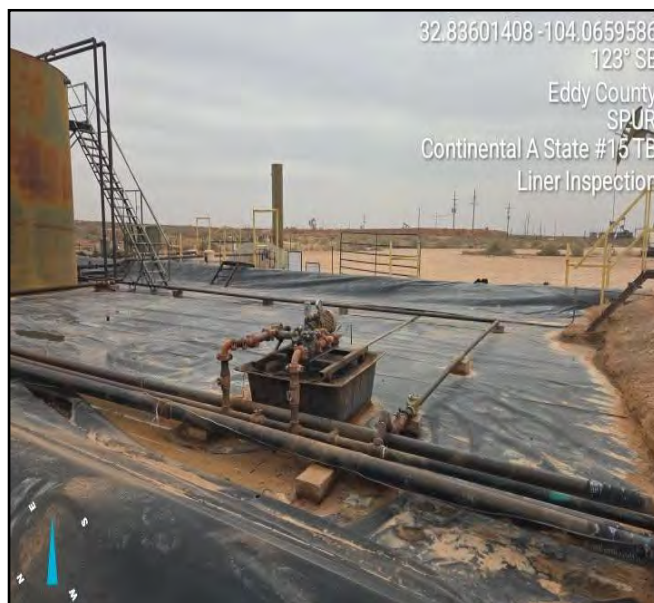
### PHOTOGRAPHIC DOCUMENTATION

**SITE NAME: Continetal State 15A TB**

**Liner Inspection :**



Photograph taken during liner inspection facing southwest.



Photograph taken during liner inspection facing southeast.



Photograph taken during liner inspection facing northeast.



Photograph taken during liner inspection facing north.

### PHOTOGRAPHIC DOCUMENTATION

**SITE NAME: Continetal State 15A TB**

**Windrows :**

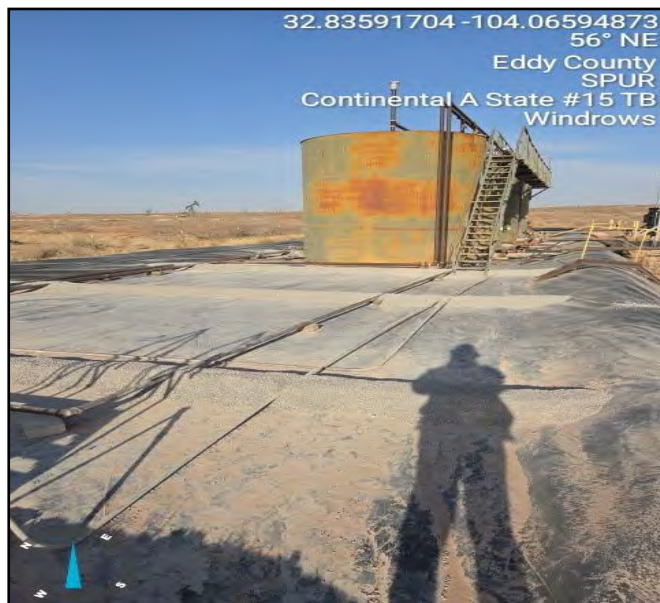


Photo taken after windrows were laid facing northeast.

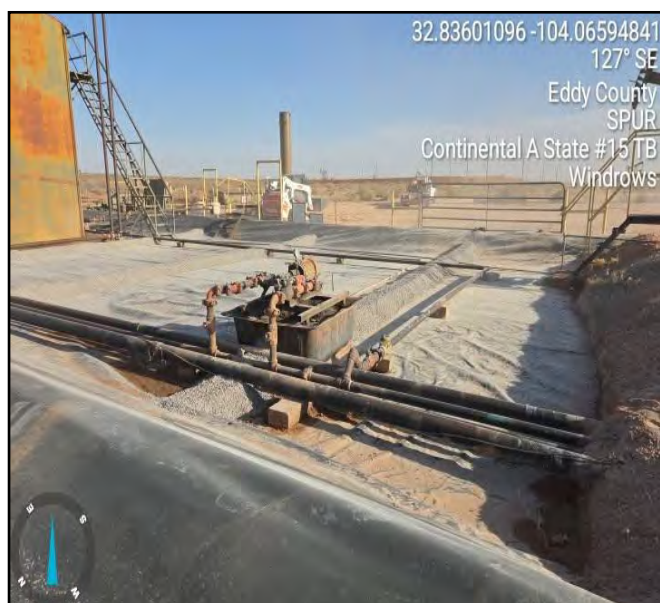


Photo taken after windrows were laid facing southeast.



Photo taken after windrows were laid facing north.



Photo taken after windrows were laid facing northwest.

Sante Fe Main Office  
Phone: (505) 476-3441

General Information  
Phone: (505) 629-6116

Online Phone Directory  
<https://www.emnrd.nm.gov/ocd/contact-us>

**State of New Mexico**  
**Energy, Minerals and Natural Resources**  
**Oil Conservation Division**  
**1220 S. St Francis Dr.**  
**Santa Fe, NM 87505**

QUESTIONS

Action 580770

**QUESTIONS**

Operator: Spur Energy Partners LLC 9655 Katy Freeway Houston, TX 77024	OGRID: 328947
	Action Number: 580770
	Action Type: [C-141] Remediation Closure Request C-141 (C-141-v-Closure)

**QUESTIONS**

<b>Prerequisites</b>	
Incident ID (n#)	nAPP2604831384
Incident Name	NAPP2604831384 CONTINENTAL STATE 15A TB @ F-15-17S-29E
Incident Type	Produced Water Release
Incident Status	Remediation Closure Report Received

<b>Location of Release Source</b>	
<i>Please answer all the questions in this group.</i>	
Site Name	CONTINENTAL STATE 15A TB
Date Release Discovered	02/15/2026
Surface Owner	State

<b>Incident Details</b>	
<i>Please answer all the questions in this group.</i>	
Incident Type	Produced Water Release
Did this release result in a fire or is the result of a fire	No
Did this release result in any injuries	No
Has this release reached or does it have a reasonable probability of reaching a watercourse	No
Has this release endangered or does it have a reasonable probability of endangering public health	No
Has this release substantially damaged or will it substantially damage property or the environment	No
Is this release of a volume that is or may with reasonable probability be detrimental to fresh water	No

<b>Nature and Volume of Release</b>	
<i>Material(s) released, please answer all that apply below. Any calculations or specific justifications for the volumes provided should be attached to the follow-up C-141 submission.</i>	
Crude Oil Released (bbls) Details	Not answered.
Produced Water Released (bbls) Details	Cause: Corrosion   Pipeline (Any)   Produced Water   Released: 24 BBL   Recovered: 24 BBL   Lost: 0 BBL.
Is the concentration of chloride in the produced water >10,000 mg/l	Yes
Condensate Released (bbls) Details	Not answered.
Natural Gas Vented (Mcf) Details	Not answered.
Natural Gas Flared (Mcf) Details	Not answered.
Other Released Details	Not answered.
Are there additional details for the questions above (i.e. any answer containing Other, Specify, Unknown, and/or Fire, or any negative lost amounts)	4" STEEL PIPE BODY CORRODED RELEASIN PW INTO LINED CONTAINMENT

Sante Fe Main Office  
Phone: (505) 476-3441

General Information  
Phone: (505) 629-6116

Online Phone Directory  
<https://www.emnrd.nm.gov/ocd/contact-us>

**State of New Mexico**  
**Energy, Minerals and Natural Resources**  
**Oil Conservation Division**  
**1220 S. St Francis Dr.**  
**Santa Fe, NM 87505**

QUESTIONS, Page 2

Action 580770

**QUESTIONS (continued)**

Operator: Spur Energy Partners LLC 9655 Katy Freeway Houston, TX 77024	OGRID: 328947
	Action Number: 580770
	Action Type: [C-141] Remediation Closure Request C-141 (C-141-v-Closure)

**QUESTIONS**

<b>Nature and Volume of Release (continued)</b>	
Is this a gas only submission (i.e. only significant Mcf values reported)	<b>No, according to supplied volumes this does not appear to be a "gas only" report.</b>
Was this a major release as defined by Subsection A of 19.15.29.7 NMAC	<b>No</b>
Reasons why this would be considered a submission for a notification of a major release	<i>Unavailable.</i>
<i>With the implementation of the 19.15.27 NMAC (05/25/2021), venting and/or flaring of natural gas (i.e. gas only) are to be submitted on the C-129 form.</i>	

**Initial Response**

*The responsible party must undertake the following actions immediately unless they could create a safety hazard that would result in injury.*

The source of the release has been stopped	<b>True</b>
The impacted area has been secured to protect human health and the environment	<b>True</b>
Released materials have been contained via the use of berms or dikes, absorbent pads, or other containment devices	<b>True</b>
All free liquids and recoverable materials have been removed and managed appropriately	<b>True</b>
If all the actions described above have not been undertaken, explain why	<b>N/A</b>

*Per Paragraph (4) of Subsection B of 19.15.29.8 NMAC the responsible party may commence remediation immediately after discovery of a release. If remediation has begun, please prepare and attach a narrative of actions to date in the follow-up C-141 submission. If remedial efforts have been successfully completed or if the release occurred within a lined containment area (see Subparagraph (a) of Paragraph (5) of Subsection A of 19.15.29.11 NMAC), please prepare and attach all information needed for closure evaluation in the follow-up C-141 submission.*

I hereby certify that the information given above is true and complete to the best of my knowledge and understand that pursuant to OCD rules and regulations all operators are required to report and/or file certain release notifications and perform corrective actions for releases which may endanger public health or the environment. The acceptance of a C-141 report by the OCD does not relieve the operator of liability should their operations have failed to adequately investigate and remediate contamination that pose a threat to groundwater, surface water, human health or the environment. In addition, OCD acceptance of a C-141 report does not relieve the operator of responsibility for compliance with any other federal, state, or local laws and/or regulations.

I hereby agree and sign off to the above statement	Name: Katherine Purvis Title: EHS Coordinator Email: <a href="mailto:katherine.purvis@spurenergy.com">katherine.purvis@spurenergy.com</a> Date: 04/30/2026
--	---

Sante Fe Main Office  
Phone: (505) 476-3441

General Information  
Phone: (505) 629-6116

Online Phone Directory  
<https://www.emnrd.nm.gov/ocd/contact-us>

**State of New Mexico**  
**Energy, Minerals and Natural Resources**  
**Oil Conservation Division**  
**1220 S. St Francis Dr.**  
**Santa Fe, NM 87505**

QUESTIONS, Page 3

Action 580770

**QUESTIONS (continued)**

Operator: Spur Energy Partners LLC 9655 Katy Freeway Houston, TX 77024	OGRID: 328947
	Action Number: 580770
	Action Type: [C-141] Remediation Closure Request C-141 (C-141-v-Closure)

**QUESTIONS**

**Site Characterization**

Please answer all the questions in this group (only required when seeking remediation plan approval and beyond). This information must be provided to the appropriate district office no later than 90 days after the release discovery date.

What is the shallowest depth to groundwater beneath the area affected by the release in feet below ground surface (ft bgs)	Between 100 and 500 (ft.)
What method was used to determine the depth to ground water	NM OSE iWaters Database Search
Did this release impact groundwater or surface water	No
<b>What is the minimum distance, between the closest lateral extents of the release and the following surface areas:</b>	
A continuously flowing watercourse or any other significant watercourse	Greater than 5 (mi.)
Any lakebed, sinkhole, or playa lake (measured from the ordinary high-water mark)	Greater than 5 (mi.)
An occupied permanent residence, school, hospital, institution, or church	Greater than 5 (mi.)
A spring or a private domestic fresh water well used by less than five households for domestic or stock watering purposes	Between 1000 (ft.) and ½ (mi.)
Any other fresh water well or spring	Between 1000 (ft.) and ½ (mi.)
Incorporated municipal boundaries or a defined municipal fresh water well field	Greater than 5 (mi.)
A wetland	Between 500 and 1000 (ft.)
A subsurface mine	Greater than 5 (mi.)
An (non-karst) unstable area	Greater than 5 (mi.)
Categorize the risk of this well / site being in a karst geology	High
A 100-year floodplain	Between 1000 (ft.) and ½ (mi.)
Did the release impact areas not on an exploration, development, production, or storage site	No

**Remediation Plan**

Please answer all the questions that apply or are indicated. This information must be provided to the appropriate district office no later than 90 days after the release discovery date.

Requesting a remediation plan approval with this submission	Yes
<i>Attach a comprehensive report demonstrating the lateral and vertical extents of soil contamination associated with the release have been determined, pursuant to 19.15.29.11 NMAC and 19.15.29.13 NMAC.</i>	
Have the lateral and vertical extents of contamination been fully delineated	Yes
Was this release entirely contained within a lined containment area	Yes
<i>Per Subsection B of 19.15.29.11 NMAC unless the site characterization report includes completed efforts at remediation, the report must include a proposed remediation plan in accordance with 19.15.29.12 NMAC, which includes the anticipated timelines for beginning and completing the remediation.</i>	
On what estimated date will the remediation commence	03/15/2026
On what date will (or did) the final sampling or liner inspection occur	03/18/2026
On what date will (or was) the remediation complete(d)	03/18/2026
What is the estimated surface area (in square feet) that will be remediated	5000
What is the estimated volume (in cubic yards) that will be remediated	20

*These estimated dates and measurements are recognized to be the best guess or calculation at the time of submission and may (be) change(d) over time as more remediation efforts are completed.*

*The OCD recognizes that proposed remediation measures may have to be minimally adjusted in accordance with the physical realities encountered during remediation. If the responsible party has any need to significantly deviate from the remediation plan proposed, then it should consult with the division to determine if another remediation plan submission is required.*

Sante Fe Main Office  
Phone: (505) 476-3441

General Information  
Phone: (505) 629-6116

Online Phone Directory  
<https://www.emnrd.nm.gov/ocd/contact-us>

**State of New Mexico**  
**Energy, Minerals and Natural Resources**  
**Oil Conservation Division**  
**1220 S. St Francis Dr.**  
**Santa Fe, NM 87505**

QUESTIONS, Page 4

Action 580770

**QUESTIONS (continued)**

Operator: Spur Energy Partners LLC 9655 Katy Freeway Houston, TX 77024	OGRID: 328947
	Action Number: 580770
	Action Type: [C-141] Remediation Closure Request C-141 (C-141-v-Closure)

**QUESTIONS**

<b>Remediation Plan (continued)</b>	
<i>Please answer all the questions that apply or are indicated. This information must be provided to the appropriate district office no later than 90 days after the release discovery date.</i>	
<b>This remediation will (or is expected to) utilize the following processes to remediate / reduce contaminants:</b>	
<i>(Select all answers below that apply.)</i>	
Is (or was) there affected material present needing to be removed	Yes
Is (or was) there a power wash of the lined containment area (to be) performed	Yes
OTHER (Non-listed remedial process)	Not answered.
<i>Per Subsection B of 19.15.29.11 NMAC unless the site characterization report includes completed efforts at remediation, the report must include a proposed remediation plan in accordance with 19.15.29.12 NMAC, which includes the anticipated timelines for beginning and completing the remediation.</i>	
I hereby certify that the information given above is true and complete to the best of my knowledge and understand that pursuant to OCD rules and regulations all operators are required to report and/or file certain release notifications and perform corrective actions for releases which may endanger public health or the environment. The acceptance of a C-141 report by the OCD does not relieve the operator of liability should their operations have failed to adequately investigate and remediate contamination that pose a threat to groundwater, surface water, human health or the environment. In addition, OCD acceptance of a C-141 report does not relieve the operator of responsibility for compliance with any other federal, state, or local laws and/or regulations.	
I hereby agree and sign off to the above statement	Name: Katherine Purvis Title: EHS Coordinator Email: <a href="mailto:katherine.purvis@spurenergy.com">katherine.purvis@spurenergy.com</a> Date: 04/30/2026
<i>The OCD recognizes that proposed remediation measures may have to be minimally adjusted in accordance with the physical realities encountered during remediation. If the responsible party has any need to significantly deviate from the remediation plan proposed, then it should consult with the division to determine if another remediation plan submission is required.</i>	

Sante Fe Main Office  
Phone: (505) 476-3441

General Information  
Phone: (505) 629-6116

Online Phone Directory  
<https://www.emnrd.nm.gov/ocd/contact-us>

**State of New Mexico**  
**Energy, Minerals and Natural Resources**  
**Oil Conservation Division**  
**1220 S. St Francis Dr.**  
**Santa Fe, NM 87505**

QUESTIONS, Page 6

Action 580770

**QUESTIONS (continued)**

Operator: Spur Energy Partners LLC 9655 Katy Freeway Houston, TX 77024	OGRID: 328947
	Action Number: 580770
	Action Type: [C-141] Remediation Closure Request C-141 (C-141-v-Closure)

**QUESTIONS**

<b>Liner Inspection Information</b>	
Last liner inspection notification (C-141L) recorded	562993
Liner inspection date pursuant to Subparagraph (a) of Paragraph (5) of Subsection A of 19.15.29.11 NMAC	03/18/2026
Was all the impacted materials removed from the liner	Yes
What was the liner inspection surface area in square feet	5000

<b>Remediation Closure Request</b>	
<i>Only answer the questions in this group if seeking remediation closure for this release because all remediation steps have been completed.</i>	
Requesting a remediation closure approval with this submission	Yes
Have the lateral and vertical extents of contamination been fully delineated	Yes
Was this release entirely contained within a lined containment area	Yes
What was the total surface area (in square feet) remediated	5000
What was the total volume (cubic yards) remediated	20
Summarize any additional remediation activities not included by answers (above)	The impacted gravel was removed by a hand-shoveling crew. The lined containment was then power-washed, and all standing fluids were recovered using a vacuum truck. Following remediation, a liner inspection was conducted, confirming that the containment liner remained intact and maintained its integrity.

*The responsible party must attach information demonstrating they have complied with all applicable closure requirements and any conditions or directives of the OCD. This demonstration should be in the form of a comprehensive report (in .pdf format) including a scaled site map, sampling diagrams, relevant field notes, photographs of any excavation prior to backfilling, laboratory data including chain of custody documents of final sampling, and a narrative of the remedial activities. Refer to 19.15.29.12 NMAC.*

I hereby certify that the information given above is true and complete to the best of my knowledge and understand that pursuant to OCD rules and regulations all operators are required to report and/or file certain release notifications and perform corrective actions for releases which may endanger public health or the environment. The acceptance of a C-141 report by the OCD does not relieve the operator of liability should their operations have failed to adequately investigate and remediate contamination that pose a threat to groundwater, surface water, human health or the environment. In addition, OCD acceptance of a C-141 report does not relieve the operator of responsibility for compliance with any other federal, state, or local laws and/or regulations. The responsible party acknowledges they must substantially restore, reclaim, and re-vegetate the impacted surface area to the conditions that existed prior to the release or their final land use in accordance with 19.15.29.13 NMAC including notification to the OCD when reclamation and re-vegetation are complete.

I hereby agree and sign off to the above statement	Name: Katherine Purvis Title: EHS Coordinator Email: katherine.purvis@spurenergy.com Date: 04/30/2026
--	--

Sante Fe Main Office  
Phone: (505) 476-3441

General Information  
Phone: (505) 629-6116

Online Phone Directory  
<https://www.emnrd.nm.gov/ocd/contact-us>

**State of New Mexico**  
**Energy, Minerals and Natural Resources**  
**Oil Conservation Division**  
**1220 S. St Francis Dr.**  
**Santa Fe, NM 87505**

CONDITIONS

Action 580770

**CONDITIONS**

Operator: Spur Energy Partners LLC 9655 Katy Freeway Houston, TX 77024	OGRID: 328947
	Action Number: 580770
	Action Type: [C-141] Remediation Closure Request C-141 (C-141-v-Closure)

**CONDITIONS**

Created By	Condition	Condition Date
nvelez	Liner inspection approved, release resolved. Restoration complete.	5/4/2026