



SITE INFORMATION

**Closure Report
Cotton Draw 25 CTB 4
Eddy County, New Mexico
Unit D, S25, T24S, R31E
32.1932658°, -103.7362312°**

Incident ID: nAPP2611028656

Produced Water Release

Point of Release: Leak on Water Transfer Pump Piping Allowed Fluids to Lined Secondary Containment.

Release Date: 04.16.2026

Volume Released: 6 Barrels of Produced Water

Volume Recovered: 6 Barrels of Produced Water

CARMONA RESOURCES



**Prepared for:
Devon Energy
5315 Buena Vista Dr.
Carlsbad, New Mexico 88220**

**Prepared by:
Carmona Resources, LLC
310 West Wall Street
Suite 500
Midland, Texas 79701**

310 West Wall Street, Suite 500
Midland TX, 79701
432.813.1992



TABLE OF CONTENTS

1.0 SITE INFORMATION AND BACKGROUND

2.0 SITE CHARACTERIZATION AND GROUNDWATER

3.0 NMAC REGULATORY CRITERIA

4.0 LINER INSPECTION ACTIVITIES

5.0 CONCLUSIONS

FIGURES

FIGURE 1 OVERVIEW FIGURE 2 TOPOGRAPHIC

FIGURE 3 LINED CONTAINMENT

APPENDICES

APPENDIX A PHOTOS

APPENDIX B NMOCD CORRESPONDENCE

APPENDIX C SITE CHARACTERIZATION AND GROUNDWATER



June 11, 2026

Mike Bratcher
District Supervisor
Oil Conservation Division, District 1
811 S. First Street
Artesia, New Mexico 88210

Re: **Closure Report**
Cotton Draw 25 CTB 4 (04.16.2026)
Incident ID: nAPP2611028656
Devon Energy Production Company
Site Location: Unit D, S25, T24S, R31E
32.1932658°, -103.7362312
Eddy County, New Mexico

Mr. Bratcher:

At the request of Devon Energy Production Company (Devon) Carmona Resources LLC, has prepared this letter to document the liner inspection activities conducted at the Cotton Draw 25 CTB 4 (Site) located at 32.1932658°, -103.7362312° in Eddy County, New Mexico (Figures 1 and 2).

1.0 Site Information and Background

Based on the Notification of Release (NOR) obtained from the New Mexico Oil Conservation Division (NMOCD), the release was discovered on April 16, 2026, due to a leak stemming from the water transfer pump piping. It allowed fluids to be released inside the lined containment and resulted in approximately six (6) barrels of produced water being released inside the lined secondary containment. Approximately six (6) barrels of produced water were immediately recovered. The containment area is approximately 11,414 sq ft. The containment boundaries are shown in Figure 3. The Notification of Release form is attached in Appendix B.

2.0 Site Characterization and Groundwater

The site is located within a low karst area. Based on a review of the New Mexico Office of State Engineers and USGS databases, there are no known water sources within a 0.50-mile radius of the location. The nearest groundwater determination bore is approximately 0.59 miles West of the site in S26, T24S, R31E and was drilled in 2024. The bore was drilled to a depth of 59' (ft bgs). A copy of the associated Summary Report is attached in Appendix C.

3.0 NMAC Regulatory Criteria

Per the NMOCD regulatory criteria established in 19.15.29.12 NMAC, the following criteria were utilized in assessing and remediating the site.

- Benzene: 10 milligrams per kilogram (mg/kg).
- Benzene, toluene, ethylbenzene, and total xylenes (BTEX): 50 mg/kg.
- TPH: 100 mg/kg (GRO + DRO + MRO).
- Chloride: 600 mg/kg.



4.0 Liner Inspection Activities

Prior to Carmona Resources conducting a Liner Inspection, Devon contractors removed all produced fluids and thoroughly washed the containment on June 10, 2026. The NMOCD division office was notified via NMOCD portal on June 9, 2026, per Subsection D of 19.15.29.12 NMAC. See Appendix B for the NMOCD correspondence prior to performing the liner inspection. On June 11, 2026, Carmona Resources, LLC conducted liner inspection activities to assess the lined facility containment integrity and determined there were no integrity issues. Refer to the Photolog in Appendix A.

A Liner Integrity Certification was issued confirming that the structural integrity of the liner was intact. It can be found in Appendix B. See Figure 3 which illustrates the area that was inspected by outlining the entire lined facility containment.

5.0 Conclusions

Based on the liner integrity inspection taken place onsite, no further actions are required at this time. Devon formally requests the closure of the spill. If you have any questions regarding this report or need additional information, please contact us at 432-813-8988.

Sincerely,

Carmona Resources, LLC

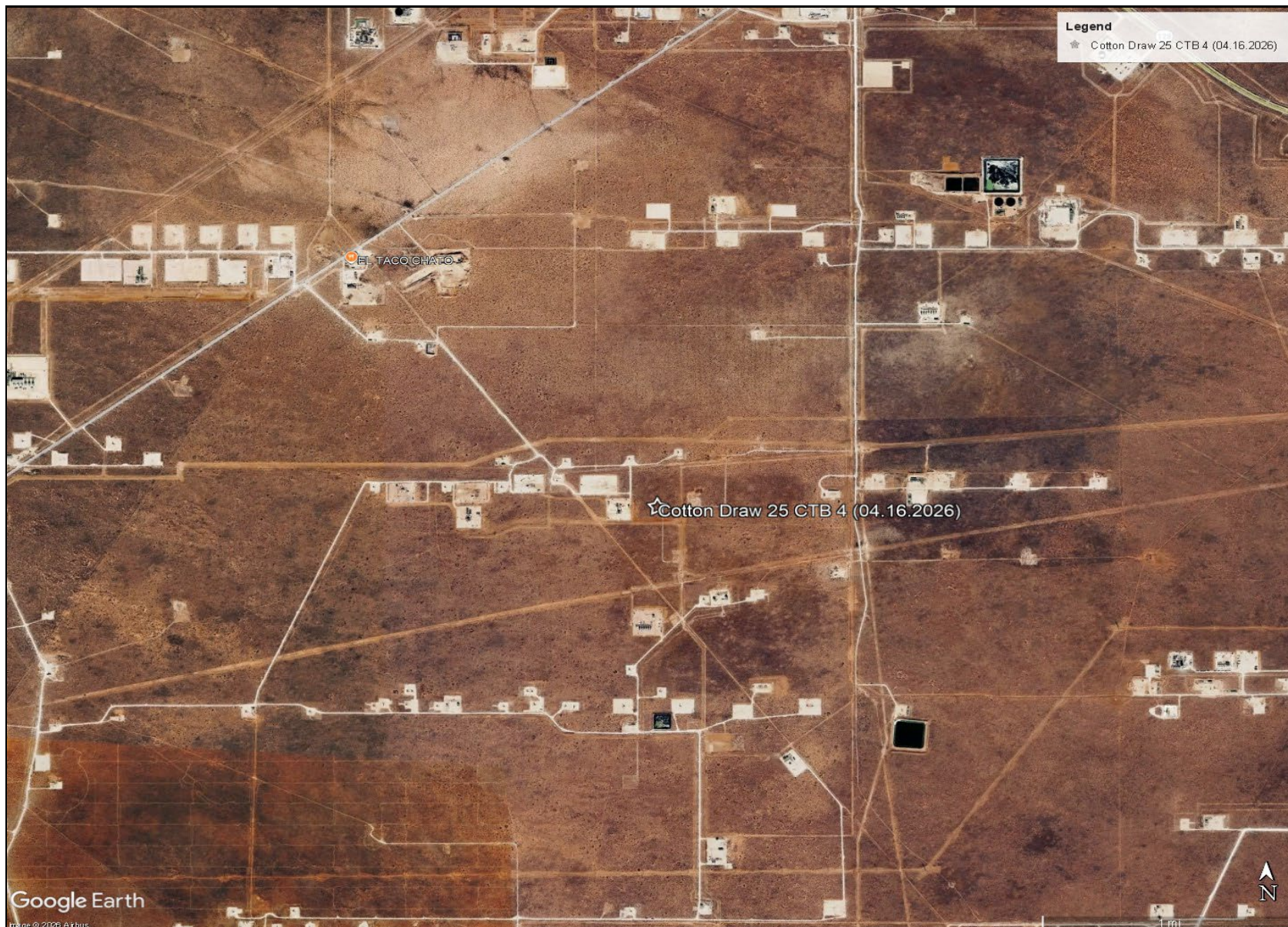
Ashton Thielke
Director of Operations

Riley Plogger
Project Manager

FIGURES

CARMONA RESOURCES



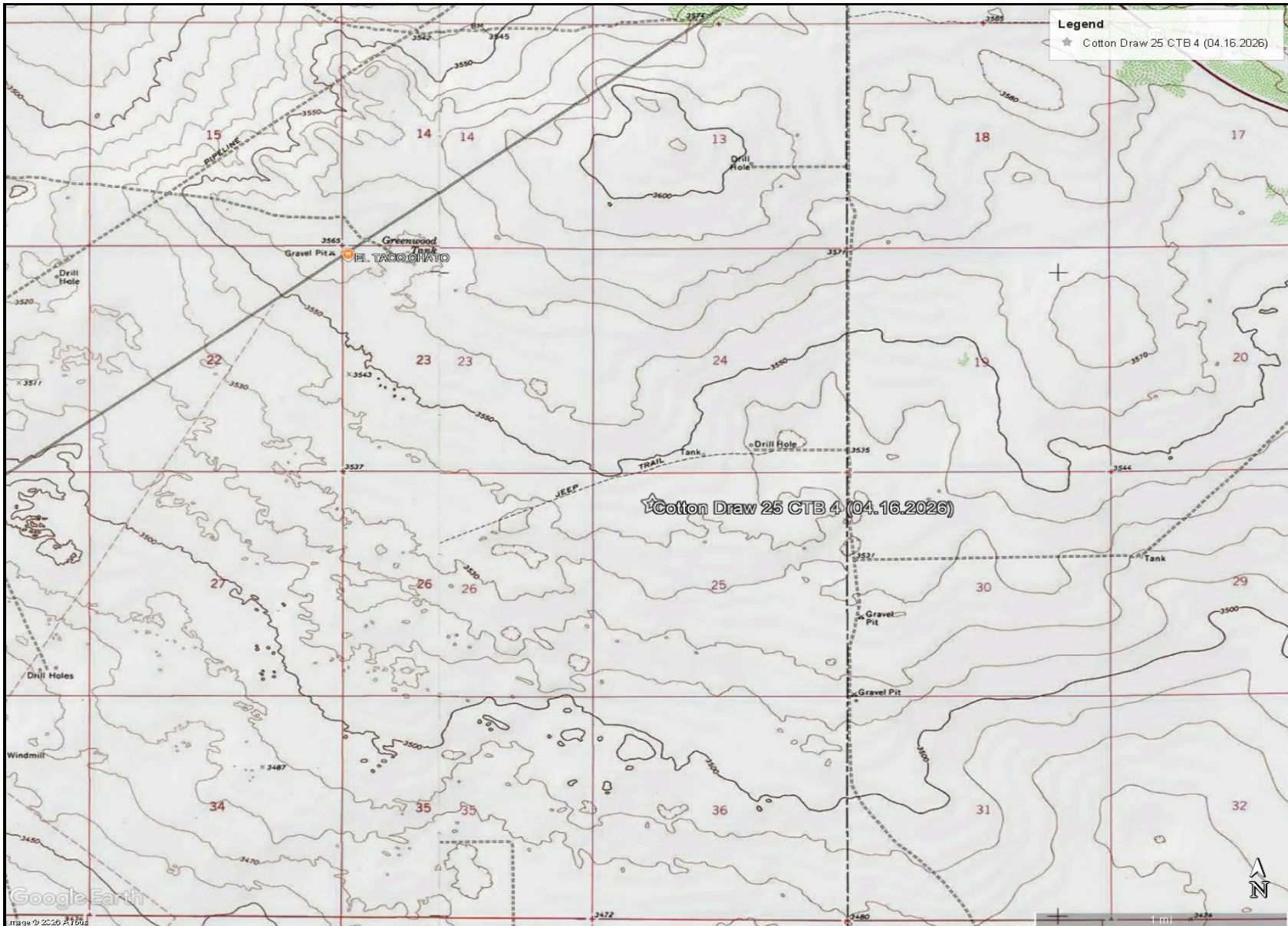


Google Earth
Image © 2025 Airbus

OVERVIEW MAP
DEVON ENERGY PRODUCTION
COTTON DRAW 25 CTB 4 (04.16.2026)
EDDY COUNTY, NEW MEXICO
32.1932658, -103.7362312



FIGURE 1



TOPOGRAPHIC MAP
DEVON ENERGY PRODUCTION
COTTON DRAW 25 CTB 4 (04.16.2026)
EDDY COUNTY, NEW MEXICO
32.1932658, -103.7362312



FIGURE 2



Google Earth

Image © 2025 Airbus

LINED SECONDARY CONTAINMENT MAP
DEVON ENERGY PRODUCTION
COTTON DRAW 25 CTB 4 (04.16.2026)
EDDY COUNTY, NEW MEXICO
32.1932658, -103.7362312



FIGURE 3

APPENDIX A

CARMONA RESOURCES



PHOTOGRAPHIC LOG

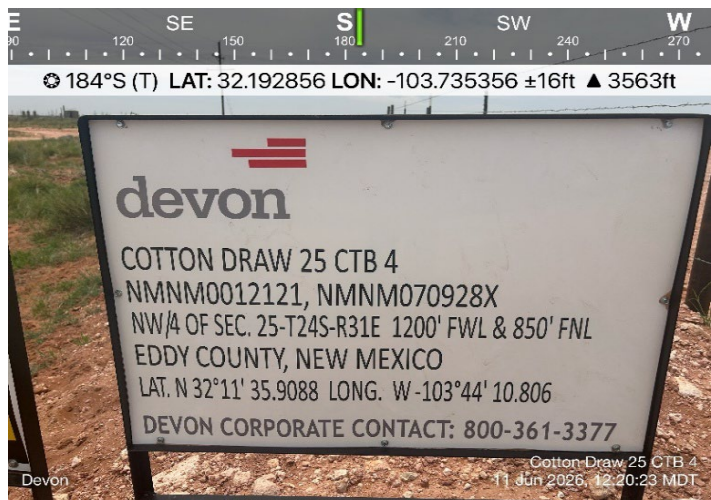
Devon Energy Production

Photograph No. 1

Facility: Cotton Draw 25 CTB 4
(04.16.2026)

County: Eddy County, New Mexico

Description:
View South of the facility sign.

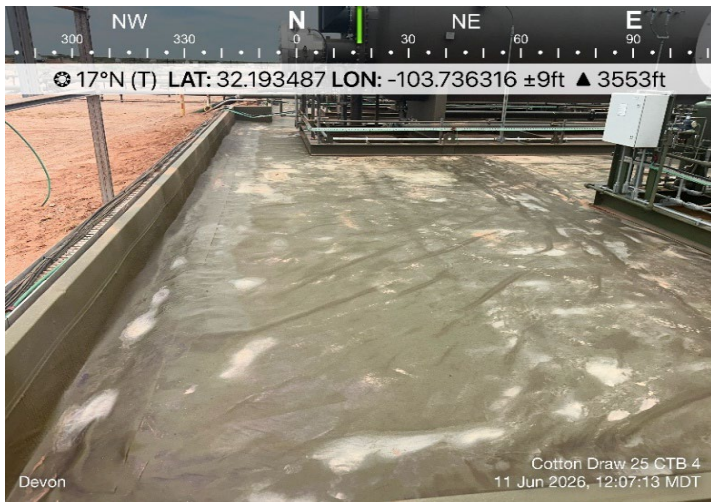


Photograph No. 2

Facility: Cotton Draw 25 CTB 4
(04.16.2026)

County: Eddy County, New Mexico

Description:
View North of the exposed secondary liner.



Photograph No. 3

Facility: Cotton Draw 25 CTB 4
(04.16.2026)

County: Eddy County, New Mexico

Description:
View South of the exposed secondary liner.



PHOTOGRAPHIC LOG

Devon Energy Production

Photograph No. 4

Facility: Cotton Draw 25 CTB 4
(04.16.2026)

County: Eddy County, New Mexico

Description:
View West of the exposed secondary liner.



Photograph No. 5

Facility: Cotton Draw 25 CTB 4
(04.16.2026)

County: Eddy County, New Mexico

Description:
View East of the exposed secondary liner.



Photograph No. 6

Facility: Cotton Draw 25 CTB 4
(04.16.2026)

County: Eddy County, New Mexico

Description:
View Southeast of the exposed secondary liner.



PHOTOGRAPHIC LOG

Devon Energy Production

Photograph No. 7

Facility: Cotton Draw 25 CTB 4
(04.16.2026)

County: Eddy County, New Mexico

Description:
View West of the exposed secondary liner.



Photograph No. 8

Facility: Cotton Draw 25 CTB 4
(04.16.2026)

County: Eddy County, New Mexico

Description:
View West of the exposed secondary liner.

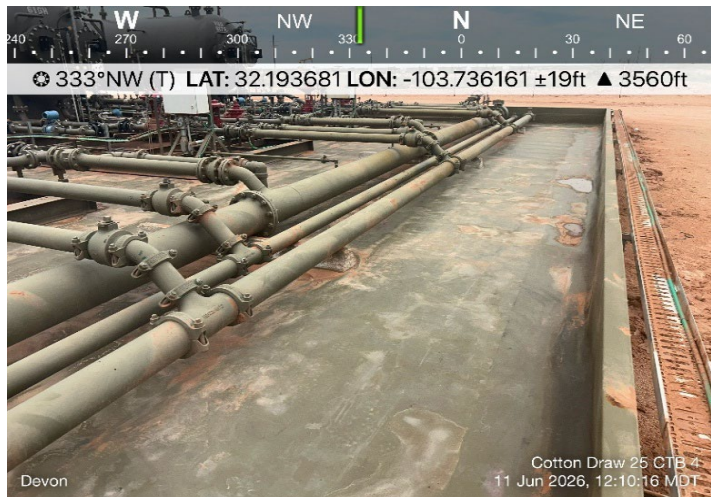


Photograph No. 9

Facility: Cotton Draw 25 CTB 4
(04.16.2026)

County: Eddy County, New Mexico

Description:
View Northwest of the exposed secondary liner.



PHOTOGRAPHIC LOG

Devon Energy Production

Photograph No. 10

Facility: Cotton Draw 25 CTB 4
(04.16.2026)

County: Eddy County, New Mexico

Description:
View Southwest of the exposed secondary liner.

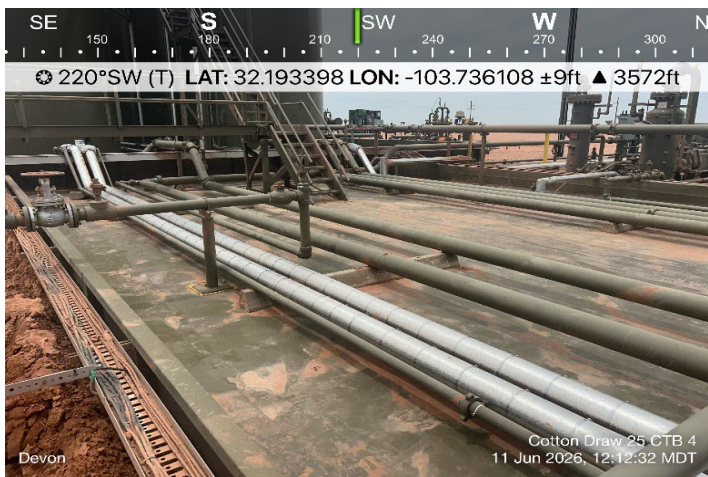


Photograph No. 11

Facility: Cotton Draw 25 CTB 4
(04.16.2026)

County: Eddy County, New Mexico

Description:
View Southwest of the exposed secondary liner.



Photograph No. 12

Facility: Cotton Draw 25 CTB 4
(04.16.2026)

County: Eddy County, New Mexico

Description:
View South of the exposed secondary liner.



APPENDIX B

CARMONA RESOURCES



Sante Fe Main Office
Phone: (505) 476-3441

General Information
Phone: (505) 629-6116

Online Phone Directory
<https://www.emnrd.nm.gov/ocd/contact-us>

**State of New Mexico
Energy, Minerals and Natural Resources
Oil Conservation Division
1220 S. St Francis Dr.
Santa Fe, NM 87505**

QUESTIONS

Action 576878

QUESTIONS

Operator: DEVON ENERGY PRODUCTION COMPANY, LP 333 West Sheridan Ave. Oklahoma City, OK 73102	OGRID: 6137
	Action Number: 576878
	Action Type: [NOTIFY] Notification Of Release (NOR)

QUESTIONS

Location of Release Source	
<i>Please answer all the questions in this group.</i>	
Site Name	COTTON DRAW 25 CTB 4
Date Release Discovered	04/16/2026
Surface Owner	Federal

Incident Details	
<i>Please answer all the questions in this group.</i>	
Incident Type	Produced Water Release
Did this release result in a fire or is the result of a fire	No
Did this release result in any injuries	No
Has this release reached or does it have a reasonable probability of reaching a watercourse	No
Has this release endangered or does it have a reasonable probability of endangering public health	No
Has this release substantially damaged or will it substantially damage property or the environment	No
Is this release of a volume that is or may with reasonable probability be detrimental to fresh water	No

Nature and Volume of Release	
<i>Material(s) released, please answer all that apply below. Any calculations or specific justifications for the volumes provided should be attached to the follow-up C-141 submission.</i>	
Crude Oil Released (bbls) Details	Not answered.
Produced Water Released (bbls) Details	Cause: Equipment Failure Pump Produced Water Released: 6 BBL Recovered: 6 BBL Lost: 0 BBL.
Is the concentration of chloride in the produced water >10,000 mg/l	Yes
Condensate Released (bbls) Details	Not answered.
Natural Gas Vented (Mcf) Details	Not answered.
Natural Gas Flared (Mcf) Details	Not answered.
Other Released Details	Not answered.
Are there additional details for the questions above (i.e. any answer containing Other, Specify, Unknown, and/or Fire, or any negative lost amounts)	Leak on water transfer pump piping allowed fluids to lined secondary containment.

Sante Fe Main Office
Phone: (505) 476-3441

General Information
Phone: (505) 629-6116

Online Phone Directory
<https://www.emnrd.nm.gov/ocd/contact-us>

State of New Mexico
Energy, Minerals and Natural Resources
Oil Conservation Division
1220 S. St Francis Dr.
Santa Fe, NM 87505

QUESTIONS, Page 2

Action 576878

QUESTIONS (continued)

Operator: DEVON ENERGY PRODUCTION COMPANY, LP 333 West Sheridan Ave. Oklahoma City, OK 73102	OGRID: 6137
	Action Number: 576878
	Action Type: [NOTIFY] Notification Of Release (NOR)

QUESTIONS

Nature and Volume of Release (continued)	
Is this a gas only submission (i.e. only significant Mcf values reported)	No, according to supplied volumes this does not appear to be a "gas only" report.
Was this a major release as defined by Subsection A of 19.15.29.7 NMAC	No
Reasons why this would be considered a submission for a notification of a major release	<i>Unavailable.</i>
<i>With the implementation of the 19.15.27 NMAC (05/25/2021), venting and/or flaring of natural gas (i.e. gas only) are to be submitted on the C-129 form.</i>	

Initial Response

The responsible party must undertake the following actions immediately unless they could create a safety hazard that would result in injury.

The source of the release has been stopped	True
The impacted area has been secured to protect human health and the environment	True
Released materials have been contained via the use of berms or dikes, absorbent pads, or other containment devices	True
All free liquids and recoverable materials have been removed and managed appropriately	True
If all the actions described above have not been undertaken, explain why	<i>Not answered.</i>

Per Paragraph 4 of Subsection B of 19.15.29.8 NMAC the responsible party may commence remediation immediately after discovery of a release. If remediation has begun, please prepare and attach a narrative of actions to date in the follow-up C-141 submission. If remedial efforts have been successfully completed or if the release occurred within a lined containment area (see 19.15.29.11(A)(5)(a) NMAC), please prepare and attach all information needed for closure evaluation in the follow-up C-141 submission.

Sante Fe Main Office
Phone: (505) 476-3441

General Information
Phone: (505) 629-6116

Online Phone Directory
<https://www.emnrd.nm.gov/ocd/contact-us>

State of New Mexico
Energy, Minerals and Natural Resources
Oil Conservation Division
1220 S. St Francis Dr.
Santa Fe, NM 87505

ACKNOWLEDGMENTS

Action 576878

ACKNOWLEDGMENTS

Operator: DEVON ENERGY PRODUCTION COMPANY, LP 333 West Sheridan Ave. Oklahoma City, OK 73102	OGRID: 6137
	Action Number: 576878
	Action Type: [NOTIFY] Notification Of Release (NOR)

ACKNOWLEDGMENTS

<input checked="" type="checkbox"/>	I acknowledge that I am authorized to submit notification of a release on behalf of my operator.
<input checked="" type="checkbox"/>	I acknowledge that upon submitting this application, I will be creating a new incident file (assigned to my operator) to track the notification(s) and corrective action(s) for a release, pursuant to NMAC 19.15.29.
<input checked="" type="checkbox"/>	I acknowledge that creating a new incident file will require my operator to file subsequent submission(s) of form "C-141, Application for administrative approval of a release notification and corrective action", pursuant to NMAC 19.15.29.
<input checked="" type="checkbox"/>	I hereby certify that the information given above is true and complete to the best of my knowledge and understand that pursuant to OCD rules and regulations all operators are required to report and/or file certain release notifications and perform corrective actions for releases which may endanger public health or the environment.
<input checked="" type="checkbox"/>	I acknowledge the fact that the acceptance of a C-141 report by the OCD does not relieve the operator of liability should their operations have failed to adequately investigate and remediate contamination that pose a threat to groundwater, surface water, human health or the environment.
<input checked="" type="checkbox"/>	I acknowledge the fact that, in addition, OCD acceptance of a C-141 report does not relieve the operator of responsibility for compliance with any other federal, state, or local laws and/or regulations.

Sante Fe Main Office
Phone: (505) 476-3441

General Information
Phone: (505) 629-6116

Online Phone Directory
<https://www.emnrd.nm.gov/ocd/contact-us>

State of New Mexico
Energy, Minerals and Natural Resources
Oil Conservation Division
1220 S. St Francis Dr.
Santa Fe, NM 87505

CONDITIONS

Action 576878

CONDITIONS

Operator: DEVON ENERGY PRODUCTION COMPANY, LP 333 West Sheridan Ave. Oklahoma City, OK 73102	OGRID: 6137
	Action Number: 576878
	Action Type: [NOTIFY] Notification Of Release (NOR)

CONDITIONS

Created By	Condition	Condition Date
jralej	When submitting future reports regarding this release, please submit the calculations used or specific justification for the volumes reported on the initial C-141.	4/20/2026

Spill Volume Calculations

Free Standing Fluid in Lined Secondary Containment Volume

How do you want to enter area? Total area from app

Area from app (ft²) 2899.09

Depth of fluid 0.25 in

Number of Tanks in Fluid Affected Area (if any): 6

Tank Diameter (if needed): 16.0 ft

Volume of Standing Fluid 6.28 bbl

Contaminated Soil Calculations

How do you want to enter area? Total area from app

Area from app (ft²)

Depth of impacted soil in

Soil Type Caliche

Spilled Material Produced Water

Soil Saturation Wet - hand is wet/muddy after handling

Volume of Spill In Soil 0.00 bbls

Total Spill Volume 6.28 bbls

Sante Fe Main Office
Phone: (505) 476-3441

General Information
Phone: (505) 629-6116

Online Phone Directory
<https://www.emnrd.nm.gov/ocd/contact-us>

State of New Mexico
Energy, Minerals and Natural Resources
Oil Conservation Division
1220 S. St Francis Dr.
Santa Fe, NM 87505

QUESTIONS

Action 577744

QUESTIONS

Operator: DEVON ENERGY PRODUCTION COMPANY, LP 333 West Sheridan Ave. Oklahoma City, OK 73102	OGRID: 6137
	Action Number: 577744
	Action Type: [C-141] Initial C-141 (C-141-v-Initial)

QUESTIONS

Prerequisites	
Incident ID (n#)	nAPP2611028656
Incident Name	NAPP2611028656 COTTON DRAW 25 CTB 4 @ FAPP2504229945
Incident Type	Produced Water Release
Incident Status	Initial C-141 Received
Incident Facility	[fAPP2504229945] COTTON DRAW 25 CTB 4

Location of Release Source

Please answer all the questions in this group.

Site Name	COTTON DRAW 25 CTB 4
Date Release Discovered	04/16/2026
Surface Owner	Federal

Incident Details

Please answer all the questions in this group.

Incident Type	Produced Water Release
Did this release result in a fire or is the result of a fire	No
Did this release result in any injuries	No
Has this release reached or does it have a reasonable probability of reaching a watercourse	No
Has this release endangered or does it have a reasonable probability of endangering public health	No
Has this release substantially damaged or will it substantially damage property or the environment	No
Is this release of a volume that is or may with reasonable probability be detrimental to fresh water	No

Nature and Volume of Release

Material(s) released, please answer all that apply below. Any calculations or specific justifications for the volumes provided should be attached to the follow-up C-141 submission.

Crude Oil Released (bbls) Details	Not answered.
Produced Water Released (bbls) Details	Cause: Equipment Failure Pump Produced Water Released: 6 BBL Recovered: 6 BBL Lost: 0 BBL.
Is the concentration of chloride in the produced water >10,000 mg/l	Yes
Condensate Released (bbls) Details	Not answered.
Natural Gas Vented (Mcf) Details	Not answered.
Natural Gas Flared (Mcf) Details	Not answered.
Other Released Details	Not answered.
Are there additional details for the questions above (i.e. any answer containing Other, Specify, Unknown, and/or Fire, or any negative lost amounts)	Leak on water transfer pump piping allowed fluids to lined secondary containment.

Sante Fe Main Office
Phone: (505) 476-3441

General Information
Phone: (505) 629-6116

Online Phone Directory
<https://www.emnrd.nm.gov/ocd/contact-us>

State of New Mexico
Energy, Minerals and Natural Resources
Oil Conservation Division
1220 S. St Francis Dr.
Santa Fe, NM 87505

QUESTIONS, Page 2

Action 577744

QUESTIONS (continued)

Operator: DEVON ENERGY PRODUCTION COMPANY, LP 333 West Sheridan Ave. Oklahoma City, OK 73102	OGRID: 6137
	Action Number: 577744
	Action Type: [C-141] Initial C-141 (C-141-v-Initial)

QUESTIONS

Nature and Volume of Release (continued)	
Is this a gas only submission (i.e. only significant Mcf values reported)	No, according to supplied volumes this does not appear to be a "gas only" report.
Was this a major release as defined by Subsection A of 19.15.29.7 NMAC	No
Reasons why this would be considered a submission for a notification of a major release	<i>Unavailable.</i>
<i>With the implementation of the 19.15.27 NMAC (05/25/2021), venting and/or flaring of natural gas (i.e. gas only) are to be submitted on the C-129 form.</i>	

Initial Response

The responsible party must undertake the following actions immediately unless they could create a safety hazard that would result in injury.

The source of the release has been stopped	True
The impacted area has been secured to protect human health and the environment	True
Released materials have been contained via the use of berms or dikes, absorbent pads, or other containment devices	True
All free liquids and recoverable materials have been removed and managed appropriately	True
If all the actions described above have not been undertaken, explain why	<i>Not answered.</i>

Per Paragraph (4) of Subsection B of 19.15.29.8 NMAC the responsible party may commence remediation immediately after discovery of a release. If remediation has begun, please prepare and attach a narrative of actions to date in the follow-up C-141 submission. If remedial efforts have been successfully completed or if the release occurred within a lined containment area (see Subparagraph (a) of Paragraph (5) of Subsection A of 19.15.29.11 NMAC), please prepare and attach all information needed for closure evaluation in the follow-up C-141 submission.

I hereby certify that the information given above is true and complete to the best of my knowledge and understand that pursuant to OCD rules and regulations all operators are required to report and/or file certain release notifications and perform corrective actions for releases which may endanger public health or the environment. The acceptance of a C-141 report by the OCD does not relieve the operator of liability should their operations have failed to adequately investigate and remediate contamination that pose a threat to groundwater, surface water, human health or the environment. In addition, OCD acceptance of a C-141 report does not relieve the operator of responsibility for compliance with any other federal, state, or local laws and/or regulations.

I hereby agree and sign off to the above statement	Name: James Raley Title: EHS Professional Email: jim.ralej@dvn.com Date: 04/21/2026
--	--

Sante Fe Main Office
Phone: (505) 476-3441

General Information
Phone: (505) 629-6116

Online Phone Directory
<https://www.emnrd.nm.gov/ocd/contact-us>

State of New Mexico
Energy, Minerals and Natural Resources
Oil Conservation Division
1220 S. St Francis Dr.
Santa Fe, NM 87505

QUESTIONS, Page 3

Action 577744

QUESTIONS (continued)

Operator: DEVON ENERGY PRODUCTION COMPANY, LP 333 West Sheridan Ave. Oklahoma City, OK 73102	OGRID: 6137
	Action Number: 577744
	Action Type: [C-141] Initial C-141 (C-141-v-Initial)

QUESTIONS

Site Characterization
Please answer all the questions in this group (only required when seeking remediation plan approval and beyond). This information must be provided to the appropriate district office no later than 90 days after the release discovery date.

What is the shallowest depth to groundwater beneath the area affected by the release in feet below ground surface (ft bgs)	Not answered.
What method was used to determine the depth to ground water	Not answered.
Did this release impact groundwater or surface water	Not answered.
What is the minimum distance, between the closest lateral extents of the release and the following surface areas:	
A continuously flowing watercourse or any other significant watercourse	Not answered.
Any lakebed, sinkhole, or playa lake (measured from the ordinary high-water mark)	Not answered.
An occupied permanent residence, school, hospital, institution, or church	Not answered.
A spring or a private domestic fresh water well used by less than five households for domestic or stock watering purposes	Not answered.
Any other fresh water well or spring	Not answered.
Incorporated municipal boundaries or a defined municipal fresh water well field	Not answered.
A wetland	Not answered.
A subsurface mine	Not answered.
An (non-karst) unstable area	Not answered.
Categorize the risk of this well / site being in a karst geology	Not answered.
A 100-year floodplain	Not answered.
Did the release impact areas not on an exploration, development, production, or storage site	Not answered.

Remediation Plan

Please answer all the questions that apply or are indicated. This information must be provided to the appropriate district office no later than 90 days after the release discovery date.

Requesting a remediation plan approval with this submission	No
<i>The OCD recognizes that proposed remediation measures may have to be minimally adjusted in accordance with the physical realities encountered during remediation. If the responsible party has any need to significantly deviate from the remediation plan proposed, then it should consult with the division to determine if another remediation plan submission is required.</i>	

Sante Fe Main Office
Phone: (505) 476-3441

General Information
Phone: (505) 629-6116

Online Phone Directory
<https://www.emnrd.nm.gov/ocd/contact-us>

State of New Mexico
Energy, Minerals and Natural Resources
Oil Conservation Division
1220 S. St Francis Dr.
Santa Fe, NM 87505

CONDITIONS

Action 577744

CONDITIONS

Operator: DEVON ENERGY PRODUCTION COMPANY, LP 333 West Sheridan Ave. Oklahoma City, OK 73102	OGRID: 6137
	Action Number: 577744
	Action Type: [C-141] Initial C-141 (C-141-v-Initial)

CONDITIONS

Created By	Condition	Condition Date
rhamlet	None	4/21/2026

Sante Fe Main Office
Phone: (505) 476-3441

General Information
Phone: (505) 629-6116

Online Phone Directory
<https://www.emnrd.nm.gov/ocd/contact-us>

State of New Mexico
Energy, Minerals and Natural Resources
Oil Conservation Division
1220 S. St Francis Dr.
Santa Fe, NM 87505

QUESTIONS

Action 593485

QUESTIONS

Operator: DEVON ENERGY PRODUCTION COMPANY, LP 333 West Sheridan Ave. Oklahoma City, OK 73102	OGRID: 6137
	Action Number: 593485
	Action Type: [NOTIFY] Notification Of Liner Inspection (C-141L)

QUESTIONS

Prerequisites	
Incident ID (n#)	nAPP2611028656
Incident Name	NAPP2611028656 COTTON DRAW 25 CTB 4 @ FAPP2504229945
Incident Type	Produced Water Release
Incident Status	Initial C-141 Approved
Incident Facility	[fAPP2504229945] COTTON DRAW 25 CTB 4

Location of Release Source	
Site Name	COTTON DRAW 25 CTB 4
Date Release Discovered	04/16/2026
Surface Owner	Federal

Liner Inspection Event Information	
<i>Please answer all the questions in this group.</i>	
What is the liner inspection surface area in square feet	11,415
Have all the impacted materials been removed from the liner	Yes
Liner inspection date pursuant to Subparagraph (a) of Paragraph (5) of Subsection A of 19.15.29.11 NMAC	06/11/2026
Time liner inspection will commence	12:00 PM
Please provide any information necessary for observers to liner inspection	4327015475
Please provide any information necessary for navigation to liner inspection site	32.1932658,-103.7362312

Sante Fe Main Office
Phone: (505) 476-3441

General Information
Phone: (505) 629-6116

Online Phone Directory
<https://www.emnrd.nm.gov/ocd/contact-us>

State of New Mexico
Energy, Minerals and Natural Resources
Oil Conservation Division
1220 S. St Francis Dr.
Santa Fe, NM 87505

CONDITIONS

Action 593485

CONDITIONS

Operator: DEVON ENERGY PRODUCTION COMPANY, LP 333 West Sheridan Ave. Oklahoma City, OK 73102	OGRID: 6137
	Action Number: 593485
	Action Type: [NOTIFY] Notification Of Liner Inspection (C-141L)

CONDITIONS

Created By	Condition	Condition Date
jraley	Failure to notify the OCD of liner inspections including any changes in date/time per the requirements of 19.15.29.11.A(5)(a)(ii) NMAC, may result in the inspection not being accepted.	6/9/2026



Liner Integrity Certification

The following serves to verify that the affected liner has been inspected and found to be in serviceable condition in accordance with 19.15.29.11 A.(5)(a)(i-ii) of the New Mexico Administrative Code.

Facility ID: fAPP2504229945

Date: 06.11.2026

Incident ID(s): nAPP2611028656

- Responsible Party has visually inspected the liner.
- Liner remains intact and was able to contain the leak in question.
- At least two business days' notice was given to the appropriate division district office before conducting the liner inspection.
- Photographs illustrating liner integrity are included.

APPENDIX C






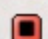

CARMONA RESOURCES

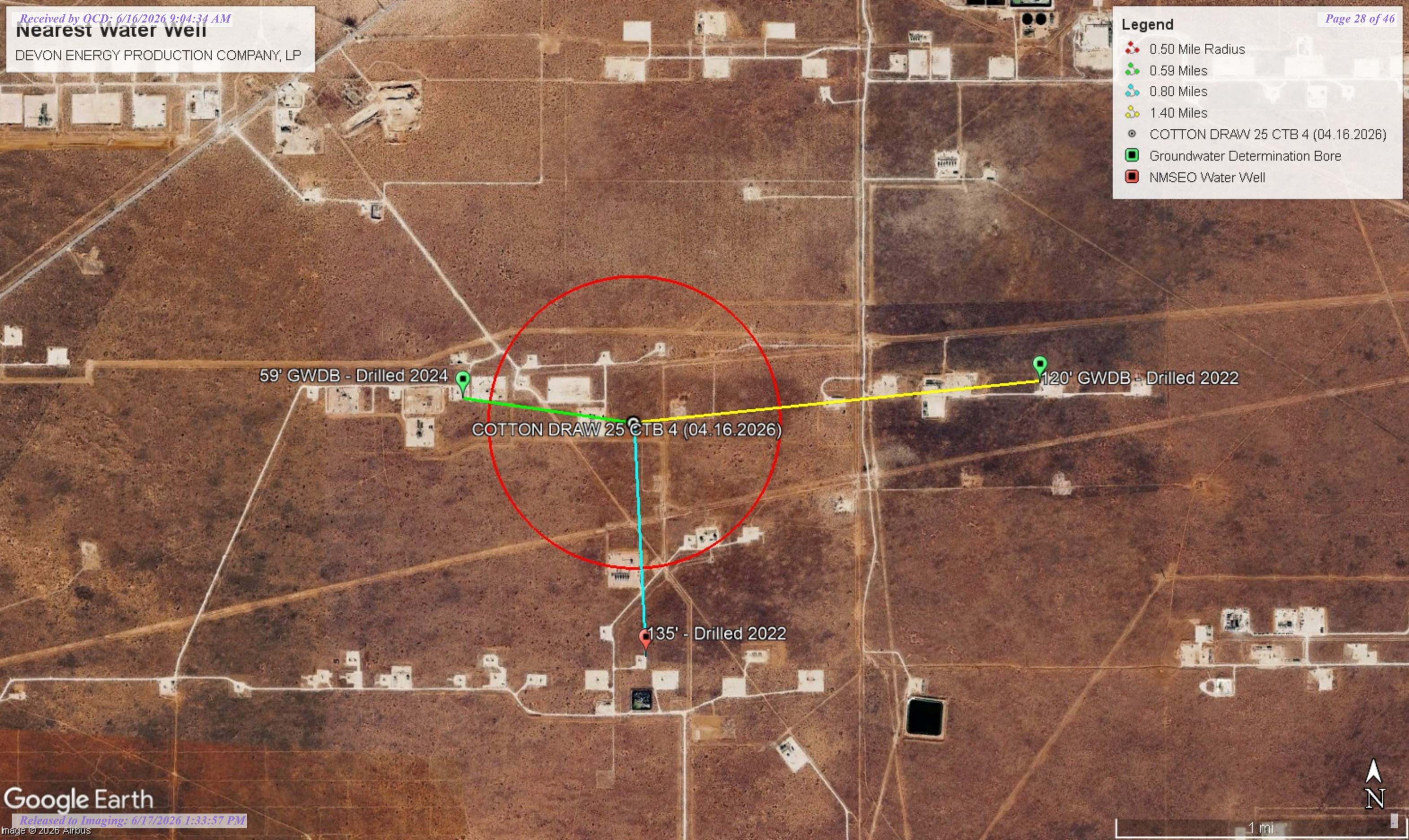


Nearest water well

DEVON ENERGY PRODUCTION COMPANY, LP

Legend

-  0.50 Mile Radius
-  0.59 Miles
-  0.80 Miles
-  1.40 Miles
-  COTTON DRAW 25 CTB 4 (04.16.2026)
-  Groundwater Determination Bore
-  NMSEO Water Well

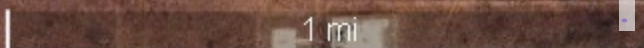


59' GWDB - Drilled 2024

COTTON DRAW 25 CTB 4 (04.16.2026)

120' GWDB - Drilled 2022



135' - Drilled 2022




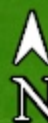
Low Karst

DEVON ENERGY PRODUCTION COMPANY, LP

Legend

-  COTTON DRAW 25 CTB 4 (04.16.2026)
-  Low

 COTTON DRAW 25 CTB 4 (04.16.2026)





New Mexico Office of the State Engineer

Water Column/Average Depth to Water

(A CLW##### in the POD suffix indicates the POD has been replaced & no longer serves a water right file.) (R=POD has been replaced, O=orphaned, C=the file is closed)

(quarters are smallest to largest)

(meters)

(In feet)

POD Number	Code	Sub basin	County	Q64	Q16	Q4	Sec	Tws	Range	X	Y	Map	Distance	Well Depth	Depth Water	Water Column
C 04636 POD1		CUB	ED	SW	SE	SW	25	24S	31E	619200.0	3561279.4	●	1281			
C 04643 POD1		C	ED	SE	NE	NE	05	23S	27E	619200.0	3561279.4	●	1281	305	135	170
C 04654 POD1		CUB	ED	SW	SW	SE	25	24S	31E	619764.3	3561226.9	●	1477	55		
C 04388 POD1		C	ED	SW	NE	NW	23	24S	31E	617546.3	3564006.4	●	2140	910	868	42
C 04633 POD1		CUB	ED	NE	NW	NW	35	24S	31E	617394.3	3561170.0	●	2216			
C 04665		CUB	LE	NW	NW	NE	30	24S	32E	621349.8	3562798.6	●	2239	120		
C 04576 POD1		CUB	ED	NW	NE	NW	23	24S	31E	617699.5	3564324.7	●	2268	910	850	60
C 02574		CUB	ED	NW	NW	NE	02	25S	31E	618092.0	3559494.0 *	●	3232			
C 02572		CUB	ED	SE	NE	NE	02	25S	31E	618695.0	3559294.0 *	●	3292	852		
C 05011 POD1		CUB	LE	SW	SE	SE	18	24S	32E	621739.2	3564585.3	●	3309	105		
C 02571		CUB	ED	SE	NW	NE	02	25S	31E	618292.0	3559294.0 *	●	3368	860		
C 04508 POD1		CUB	ED	SE	SE	SW	15	24S	31E	616298.3	3564493.0	●	3423	110		
C 04722 POD2		CUB	LE	NE	NW	NW	06	25S	32E	620808.2	3559499.5	●	3492	55		
C 02573		CUB	ED	NW	SE	NE	02	25S	31E	618499.0	3559091.0 *	●	3522			
C 04593 POD1		CUB	ED	SW	SE	SE	34	24S	31E	616902.6	3559674.6	●	3639	55		
C 02568		CUB	ED	SE	SW	NW	01	25S	31E	619103.0	3558892.0 *	●	3666	1025		
C 02569		CUB	ED	SE	SE	NE	02	25S	31E	618699.0	3558891.0 *	●	3691	1016		
C 04687 POD1		CUB	ED	SE	NE	SW	12	24S	31E	619481.4	3566450.0	●	3908	110		

Average Depth to Water: **617 feet**

Minimum Depth: **135 feet**

Maximum Depth: **868 feet**

Record Count: 18

UTM Filters (in meters):

Easting: 619122.86

Northing: 3562558.08

Radius: 4000

* UTM location was derived from PLSS - see Help

The data is furnished by the NMOSE/ISC and is accepted by the recipient with the expressed understanding that the OSE/ISC make no warranties, expressed or implied, concerning the accuracy, completeness, reliability, usability, or suitability for any particular purpose of the data.

Figure 8 - SOIL BORING LOG							Page 1 of 1	
PROJECT: Cotton Draw Unit 604			DRILLING COMPANY: Hungry Horse LLC					
PROJECT NUMBER: 1264			DRILLER: Dean					
CLIENT: Devon Energy			DRILLING METHOD: Air Rotary					
SOIL BORING 1			BORE HOLE DIAMETER: 2.375 in.					
TOTAL DEPTH: 59 ft.			DATE DRILLED: 2/14/2024					
FIELD PERSONNEL: Kyle Kincaid								
DEPTH (FT)	SOIL SYMBOL	WELL CONSTRUCTION	PID	SAMPLES	SAMPLE INTERVAL	DESCRIPTION INTERVAL	Material Description	DEPTH (FT)
0							Sand, Dark Reddish Brown, No Odor, Dry	0
5							Sand, Dark Reddish Brown, No Odor, Dry	5
10							Sand, Dark Reddish Brown, No Odor, Dry	10
15							Sand, Very Pale Brown, No Odor, Dry	15
20							Sand, Very Pale Brown, No Odor, Dry	20
25							Sand, Very Pale Brown, No Odor, Dry	25
30							Sand, Very Pale Brown, No Odor, Dry	30
35							Sand, Dark Reddish Brown, No Odor, Dry	35
40							Sand with Limestone Cobbles, Dark Reddish Brown, No Odor, Dry	40
45							Sand with Limestone Pebbles, Light Reddish Brown, No Odor, Dry	45
50							Sand with Limestone Pebbles, Light Reddish Brown, No Odor, Dry	50
55							Sand with Limestone Pebbles, Dark Reddish Brown, No Odor, Dry	55
59							Sand with Limestone Pebbles, Dark Reddish Brown, No Odor, Dry	59
60							Terminus of Boring 59 ft. - No Groundwater Present	60



Figure 7 – Soil Boring and Site Location Map



Cotton Draw Unit 604
GPS: 32.1945389°, -103.753072°
Eddy County, New Mexico



WELL RECORD & LOG

OFFICE OF THE STATE ENGINEER

www.ose.state.nm.us

OSE DIT AUG 19 2022 #02140

1. GENERAL AND WELL LOCATION	OSE POD NO. (WELL NO.) Pod 1		WELL TAG ID NO. 21068		OSE FILE NO(S). C4643	
	WELL OWNER NAME(S) Fulton Valenzuela				PHONE (OPTIONAL)	
	WELL OWNER MAILING ADDRESS 6021 S Thomason Road				CITY Carlsbad	STATE NM
					ZIP 88220	
	WELL LOCATION (FROM GPS)	DEGREES 32	MINUTES 20	SECONDS 18.54	N * ACCURACY REQUIRED: ONE TENTH OF A SECOND	
	LONGITUDE - 104	12	16.04	W * DATUM REQUIRED: WGS 84		
DESCRIPTION RELATING WELL LOCATION TO STREET ADDRESS AND COMMON LANDMARKS - PLSS (SECTION, TOWNSHIP, RANGE) WHERE AVAILABLE SE NE NE Sec 5 T23S R27E						

2. DRILLING & CASING INFORMATION	LICENSE NO. 1755		NAME OF LICENSED DRILLER John Norris			NAME OF WELL DRILLING COMPANY Hungry Horse, LLC		
	DRILLING STARTED 6 Jun 22		DRILLING ENDED 20 Jun 22		DEPTH OF COMPLETED WELL (FT) 305	BORE HOLE DEPTH (FT)	DEPTH WATER FIRST ENCOUNTERED (FT) 175	
	COMPLETED WELL IS: <input type="checkbox"/> ARTESIAN <input type="checkbox"/> DRY HOLE <input checked="" type="checkbox"/> SHALLOW (UNCONFINED)					STATIC WATER LEVEL IN COMPLETED WELL (FT) 135	DATE STATIC MEASURED	
	DRILLING FLUID: <input type="checkbox"/> AIR <input checked="" type="checkbox"/> MUD ADDITIVES - SPECIFY:							
	DRILLING METHOD: <input checked="" type="checkbox"/> ROTARY <input type="checkbox"/> HAMMER <input type="checkbox"/> CABLE TOOL <input type="checkbox"/> OTHER - SPECIFY:						CHECK HERE IF PITLESS ADAPTER IS INSTALLED <input type="checkbox"/>	
	DEPTH (feet bgl)		BORE HOLE DIAM (inches)	CASING MATERIAL AND/OR GRADE (include each casing string, and note sections of screen)	CASING CONNECTION TYPE (add coupling diameter)	CASING INSIDE DIAM. (inches)	CASING WALL THICKNESS (inches)	SLOT SIZE (inches)
	FROM	TO						
	0'	225'	10"	PVC	Glued	6"	.5	
	225'	305'	10"	DVC	Glued	6"	.5	.125

3. ANNULAR MATERIAL	DEPTH (feet bgl)		BORE HOLE DIAM. (inches)	LIST ANNULAR SEAL MATERIAL AND GRAVEL PACK SIZE-RANGE BY INTERVAL	AMOUNT (cubic feet)	METHOD OF PLACEMENT
	FROM	TO				
	0	20'	10"	Cement Grout	20	TOP
20'	305'	10"	1/4" Washed Gravel	3yds	TOP	

FOR OSE INTERNAL USE		WR-20 WELL RECORD & LOG (Version 01/28/2022)			
FILE NO.	C-4643-POD1	POD NO.	1	TRN NO.	727306
LOCATION	23S. 27E. 05. 4. 2. 2.	WELL TAG ID NO.	21068	PAGE 1 OF 2	



WELL RECORD & LOG

OFFICE OF THE STATE ENGINEER

www.ose.state.nm.us

1. GENERAL AND WELL LOCATION	OSE POD NO. (WELL NO.) C-04665 POD 1		WELL TAG ID NO.		OSE FILE NO(S). C-04665		
	WELL OWNER NAME(S) COG OPERATING LLC				PHONE (OPTIONAL) 575-988-2043		
	WELL OWNER MAILING ADDRESS 2208 W MAIN ST				CITY ARTESIA	STATE NM	ZIP 88210
	WELL LOCATION (FROM GPS)	DEGREES LATITUDE	MINUTES 32	SECONDS 11	42.72	* ACCURACY REQUIRED: ONE TENTH OF A SECOND	
		LONGITUDE	-103	42	45.30	* DATUM REQUIRED: WGS 84	
DESCRIPTION RELATING WELL LOCATION TO STREET ADDRESS AND COMMON LANDMARKS - PLSS (SECTION, TOWNSHIP, RANGE) WHERE AVAILABLE KING TUT FEDERAL 001H							

2. DRILLING & CASING INFORMATION	LICENSE NO. WD-1184	NAME OF LICENSED DRILLER RUSSELL SOUTHERLAND			NAME OF WELL DRILLING COMPANY WEST TEXAS WATER WELL SERVICE			
	DRILLING STARTED 9/15/2022	DRILLING ENDED 09/15/2022	DEPTH OF COMPLETED WELL (FT) 120	BORE HOLE DEPTH (FT)	DEPTH WATER FIRST ENCOUNTERED (FT)			
	COMPLETED WELL IS: <input type="checkbox"/> ARTESIAN <input checked="" type="checkbox"/> DRY HOLE <input type="checkbox"/> SHALLOW (UNCONFINED)				STATIC WATER LEVEL IN COMPLETED WELL (FT) N/A			
	DRILLING FLUID: <input checked="" type="checkbox"/> AIR <input type="checkbox"/> MUD ADDITIVES - SPECIFY:							
	DRILLING METHOD: <input checked="" type="checkbox"/> ROTARY <input type="checkbox"/> HAMMER <input type="checkbox"/> CABLE TOOL <input type="checkbox"/> OTHER - SPECIFY:							
	DEPTH (feet bgl)		BORE HOLE DIAM (inches)	CASING MATERIAL AND/OR GRADE (include each casing string, and note sections of screen)	CASING CONNECTION TYPE (add coupling diameter)	CASING INSIDE DIAM. (inches)	CASING WALL THICKNESS (inches)	SLOT SIZE (inches)
	FROM	TO						
				NO CASING IN HOLE				

USE DIT SEP 26 2022 PG 3:28

3. ANNULAR MATERIAL	DEPTH (feet bgl)		BORE HOLE DIAM. (inches)	LIST ANNULAR SEAL MATERIAL AND GRAVEL PACK SIZE-RANGE BY INTERVAL	AMOUNT (cubic feet)	METHOD OF PLACEMENT
	FROM	TO				
				N/A		

FOR OSE INTERNAL USE			WR-20 WELL RECORD & LOG (Version 04/30/19)		
FILE NO.	C-04665	POD NO.	1	TRN NO.	732879
LOCATION	24S. 32E. 30	112	WELL TAG ID NO.	PAGE 1 OF 2	

Mike A. Hamman, P.E.
State Engineer



Roswell Office
1900 WEST SECOND STREET
ROSWELL, NM 88201

STATE OF NEW MEXICO
OFFICE OF THE STATE ENGINEER

Trn Nbr: 732879
File Nbr: C 04665
Well File Nbr: C 04665

Oct. 04, 2022

KALEI JENNINGS
ENSOLUM
601 N MARIENFIELD ST SUITE 400
MIDLAND, TX 79701

Greetings:

The above numbered permit was issued in your name on 08/26/2022.

The Well Record was received in this office on 09/26/2022, stating that it had been completed on 09/15/2022, and was a dry well. The well is to be plugged according to 19.27.4.30 NMAC.

Please note that another well can be drilled under this permit if the well is completed and the well log filed on or before 08/26/2023.

If you have any questions, please feel free to contact us.

Sincerely,

A handwritten signature in cursive script that reads "Vanessa Clements".

Vanessa Clements
(575) 622-6521

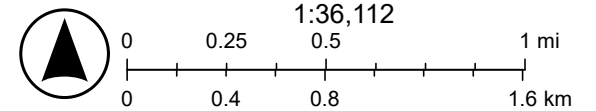
drywell

COTTON DRAW 25 CTB 4 (04.16.2026)



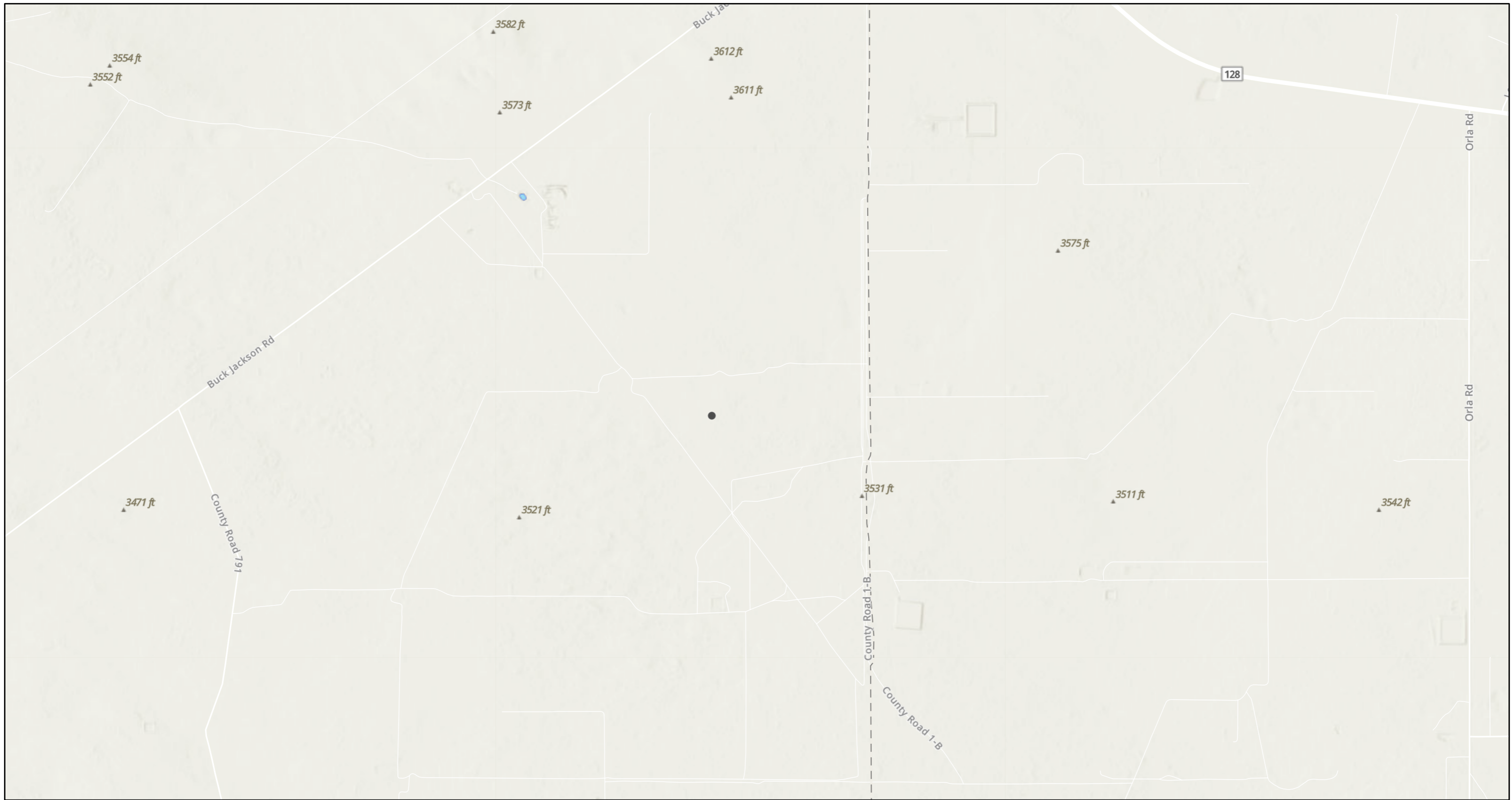
4/21/2026

World_Hillshade



Source: FEMA, Esri, Sources: Esri, TomTom, Garmin, FAO, NOAA, USGS, (c) OpenStreetMap contributors, and the GIS User Community, Esri, NASA,

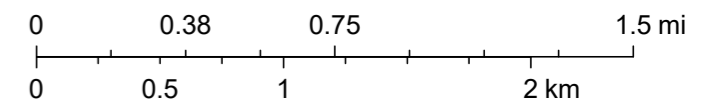
COTTON DRAW 25 CTB 4 (04.16.2026)



4/21/2026, 1:14:47 PM

■ OSW Water Bodys

1:36,112



NM OSE, Sources: Esri, TomTom, Garmin, FAO, NOAA, USGS, © OpenStreetMap contributors, and the GIS User Community, Esri, NASA, NGA, USGS, FEMA






U.S. Fish and Wildlife Service
National Wetlands Inventory

COTTON DRAW 25 CTB 4 (04.16.2026)



April 21, 2026

Wetlands

- | | | | | | |
|---|--------------------------------|---|-----------------------------------|---|----------|
|  | Estuarine and Marine Deepwater |  | Freshwater Emergent Wetland |  | Lake |
|  | Estuarine and Marine Wetland |  | Freshwater Forested/Shrub Wetland |  | Other |
| | |  | Freshwater Pond |  | Riverine |

This map is for general reference only. The US Fish and Wildlife Service is not responsible for the accuracy or currentness of the base data shown on this map. All wetlands related data should be used in accordance with the layer metadata found on the Wetlands Mapper web site.

Sante Fe Main Office
Phone: (505) 476-3441

General Information
Phone: (505) 629-6116

Online Phone Directory
<https://www.emnrd.nm.gov/ocd/contact-us>

State of New Mexico
Energy, Minerals and Natural Resources
Oil Conservation Division
1220 S. St Francis Dr.
Santa Fe, NM 87505

QUESTIONS

Action 595744

QUESTIONS

Operator: DEVON ENERGY PRODUCTION COMPANY, LP 333 West Sheridan Ave. Oklahoma City, OK 73102	OGRID: 6137
	Action Number: 595744
	Action Type: [C-141] Remediation Closure Request C-141 (C-141-v-Closure)

QUESTIONS

Prerequisites	
Incident ID (n#)	nAPP2611028656
Incident Name	NAPP2611028656 COTTON DRAW 25 CTB 4 @ FAPP2504229945
Incident Type	Produced Water Release
Incident Status	Remediation Closure Report Received
Incident Facility	[fAPP2504229945] COTTON DRAW 25 CTB 4

Location of Release Source	
<i>Please answer all the questions in this group.</i>	
Site Name	COTTON DRAW 25 CTB 4
Date Release Discovered	04/16/2026
Surface Owner	Federal

Incident Details	
<i>Please answer all the questions in this group.</i>	
Incident Type	Produced Water Release
Did this release result in a fire or is the result of a fire	No
Did this release result in any injuries	No
Has this release reached or does it have a reasonable probability of reaching a watercourse	No
Has this release endangered or does it have a reasonable probability of endangering public health	No
Has this release substantially damaged or will it substantially damage property or the environment	No
Is this release of a volume that is or may with reasonable probability be detrimental to fresh water	No

Nature and Volume of Release	
<i>Material(s) released, please answer all that apply below. Any calculations or specific justifications for the volumes provided should be attached to the follow-up C-141 submission.</i>	
Crude Oil Released (bbls) Details	Not answered.
Produced Water Released (bbls) Details	Cause: Equipment Failure Pump Produced Water Released: 6 BBL Recovered: 6 BBL Lost: 0 BBL.
Is the concentration of chloride in the produced water >10,000 mg/l	Yes
Condensate Released (bbls) Details	Not answered.
Natural Gas Vented (Mcf) Details	Not answered.
Natural Gas Flared (Mcf) Details	Not answered.
Other Released Details	Not answered.
Are there additional details for the questions above (i.e. any answer containing Other, Specify, Unknown, and/or Fire, or any negative lost amounts)	Leak on water transfer pump piping allowed fluids to lined secondary containment.

Sante Fe Main Office
Phone: (505) 476-3441

General Information
Phone: (505) 629-6116

Online Phone Directory
<https://www.emnrd.nm.gov/ocd/contact-us>

State of New Mexico
Energy, Minerals and Natural Resources
Oil Conservation Division
1220 S. St Francis Dr.
Santa Fe, NM 87505

QUESTIONS, Page 2

Action 595744

QUESTIONS (continued)

Operator: DEVON ENERGY PRODUCTION COMPANY, LP 333 West Sheridan Ave. Oklahoma City, OK 73102	OGRID: 6137
	Action Number: 595744
	Action Type: [C-141] Remediation Closure Request C-141 (C-141-v-Closure)

QUESTIONS

Nature and Volume of Release (continued)	
Is this a gas only submission (i.e. only significant Mcf values reported)	No, according to supplied volumes this does not appear to be a "gas only" report.
Was this a major release as defined by Subsection A of 19.15.29.7 NMAC	No
Reasons why this would be considered a submission for a notification of a major release	<i>Unavailable.</i>
<i>With the implementation of the 19.15.27 NMAC (05/25/2021), venting and/or flaring of natural gas (i.e. gas only) are to be submitted on the C-129 form.</i>	

Initial Response

The responsible party must undertake the following actions immediately unless they could create a safety hazard that would result in injury.

The source of the release has been stopped	True
The impacted area has been secured to protect human health and the environment	True
Released materials have been contained via the use of berms or dikes, absorbent pads, or other containment devices	True
All free liquids and recoverable materials have been removed and managed appropriately	True
If all the actions described above have not been undertaken, explain why	<i>Not answered.</i>

Per Paragraph (4) of Subsection B of 19.15.29.8 NMAC the responsible party may commence remediation immediately after discovery of a release. If remediation has begun, please prepare and attach a narrative of actions to date in the follow-up C-141 submission. If remedial efforts have been successfully completed or if the release occurred within a lined containment area (see Subparagraph (a) of Paragraph (5) of Subsection A of 19.15.29.11 NMAC), please prepare and attach all information needed for closure evaluation in the follow-up C-141 submission.

I hereby certify that the information given above is true and complete to the best of my knowledge and understand that pursuant to OCD rules and regulations all operators are required to report and/or file certain release notifications and perform corrective actions for releases which may endanger public health or the environment. The acceptance of a C-141 report by the OCD does not relieve the operator of liability should their operations have failed to adequately investigate and remediate contamination that pose a threat to groundwater, surface water, human health or the environment. In addition, OCD acceptance of a C-141 report does not relieve the operator of responsibility for compliance with any other federal, state, or local laws and/or regulations.

I hereby agree and sign off to the above statement	Name: James Raley Title: EHS Professional Email: jim.raley@dvn.com Date: 06/16/2026
--	--

Sante Fe Main Office
Phone: (505) 476-3441

General Information
Phone: (505) 629-6116

Online Phone Directory
<https://www.emnrd.nm.gov/ocd/contact-us>

State of New Mexico
Energy, Minerals and Natural Resources
Oil Conservation Division
1220 S. St Francis Dr.
Santa Fe, NM 87505

QUESTIONS, Page 3

Action 595744

QUESTIONS (continued)

Operator: DEVON ENERGY PRODUCTION COMPANY, LP 333 West Sheridan Ave. Oklahoma City, OK 73102	OGRID: 6137
	Action Number: 595744
	Action Type: [C-141] Remediation Closure Request C-141 (C-141-v-Closure)

QUESTIONS

Site Characterization

Please answer all the questions in this group (only required when seeking remediation plan approval and beyond). This information must be provided to the appropriate district office no later than 90 days after the release discovery date.

What is the shallowest depth to groundwater beneath the area affected by the release in feet below ground surface (ft bgs)	Between 51 and 75 (ft.)
What method was used to determine the depth to ground water	NM OSE iWaters Database Search
Did this release impact groundwater or surface water	No
What is the minimum distance, between the closest lateral extents of the release and the following surface areas:	
A continuously flowing watercourse or any other significant watercourse	Greater than 5 (mi.)
Any lakebed, sinkhole, or playa lake (measured from the ordinary high-water mark)	Greater than 5 (mi.)
An occupied permanent residence, school, hospital, institution, or church	Greater than 5 (mi.)
A spring or a private domestic fresh water well used by less than five households for domestic or stock watering purposes	Greater than 5 (mi.)
Any other fresh water well or spring	Greater than 5 (mi.)
Incorporated municipal boundaries or a defined municipal fresh water well field	Greater than 5 (mi.)
A wetland	Greater than 5 (mi.)
A subsurface mine	Greater than 5 (mi.)
An (non-karst) unstable area	Greater than 5 (mi.)
Categorize the risk of this well / site being in a karst geology	Low
A 100-year floodplain	Greater than 5 (mi.)
Did the release impact areas not on an exploration, development, production, or storage site	No

Remediation Plan

Please answer all the questions that apply or are indicated. This information must be provided to the appropriate district office no later than 90 days after the release discovery date.

Requesting a remediation plan approval with this submission	Yes
<i>Attach a comprehensive report demonstrating the lateral and vertical extents of soil contamination associated with the release have been determined, pursuant to 19.15.29.11 NMAC and 19.15.29.13 NMAC.</i>	
Have the lateral and vertical extents of contamination been fully delineated	Yes
Was this release entirely contained within a lined containment area	Yes
<i>Per Subsection B of 19.15.29.11 NMAC unless the site characterization report includes completed efforts at remediation, the report must include a proposed remediation plan in accordance with 19.15.29.12 NMAC, which includes the anticipated timelines for beginning and completing the remediation.</i>	
On what estimated date will the remediation commence	06/11/2026
On what date will (or did) the final sampling or liner inspection occur	06/11/2026
On what date will (or was) the remediation complete(d)	06/11/2026
What is the estimated surface area (in square feet) that will be remediated	11414
What is the estimated volume (in cubic yards) that will be remediated	0

These estimated dates and measurements are recognized to be the best guess or calculation at the time of submission and may (be) change(d) over time as more remediation efforts are completed. The OCD recognizes that proposed remediation measures may have to be minimally adjusted in accordance with the physical realities encountered during remediation. If the responsible party has any need to significantly deviate from the remediation plan proposed, then it should consult with the division to determine if another remediation plan submission is required.

Sante Fe Main Office
Phone: (505) 476-3441

General Information
Phone: (505) 629-6116

Online Phone Directory
<https://www.emnrd.nm.gov/ocd/contact-us>

State of New Mexico
Energy, Minerals and Natural Resources
Oil Conservation Division
1220 S. St Francis Dr.
Santa Fe, NM 87505

QUESTIONS, Page 4

Action 595744

QUESTIONS (continued)

Operator: DEVON ENERGY PRODUCTION COMPANY, LP 333 West Sheridan Ave. Oklahoma City, OK 73102	OGRID: 6137
	Action Number: 595744
	Action Type: [C-141] Remediation Closure Request C-141 (C-141-v-Closure)

QUESTIONS

Remediation Plan (continued)	
<i>Please answer all the questions that apply or are indicated. This information must be provided to the appropriate district office no later than 90 days after the release discovery date.</i>	
This remediation will (or is expected to) utilize the following processes to remediate / reduce contaminants:	
<i>(Select all answers below that apply.)</i>	
Is (or was) there affected material present needing to be removed	Yes
Is (or was) there a power wash of the lined containment area (to be) performed	Yes
OTHER (Non-listed remedial process)	Not answered.
<i>Per Subsection B of 19.15.29.11 NMAC unless the site characterization report includes completed efforts at remediation, the report must include a proposed remediation plan in accordance with 19.15.29.12 NMAC, which includes the anticipated timelines for beginning and completing the remediation.</i>	
I hereby certify that the information given above is true and complete to the best of my knowledge and understand that pursuant to OCD rules and regulations all operators are required to report and/or file certain release notifications and perform corrective actions for releases which may endanger public health or the environment. The acceptance of a C-141 report by the OCD does not relieve the operator of liability should their operations have failed to adequately investigate and remediate contamination that pose a threat to groundwater, surface water, human health or the environment. In addition, OCD acceptance of a C-141 report does not relieve the operator of responsibility for compliance with any other federal, state, or local laws and/or regulations.	
I hereby agree and sign off to the above statement	Name: James Raley Title: EHS Professional Email: jim.raley@dvsn.com Date: 06/16/2026
<i>The OCD recognizes that proposed remediation measures may have to be minimally adjusted in accordance with the physical realities encountered during remediation. If the responsible party has any need to significantly deviate from the remediation plan proposed, then it should consult with the division to determine if another remediation plan submission is required.</i>	

Sante Fe Main Office
Phone: (505) 476-3441

General Information
Phone: (505) 629-6116

Online Phone Directory
<https://www.emnrd.nm.gov/ocd/contact-us>

State of New Mexico
Energy, Minerals and Natural Resources
Oil Conservation Division
1220 S. St Francis Dr.
Santa Fe, NM 87505

QUESTIONS, Page 6

Action 595744

QUESTIONS (continued)

Operator: DEVON ENERGY PRODUCTION COMPANY, LP 333 West Sheridan Ave. Oklahoma City, OK 73102	OGRID: 6137
	Action Number: 595744
	Action Type: [C-141] Remediation Closure Request C-141 (C-141-v-Closure)

QUESTIONS

Liner Inspection Information	
Last liner inspection notification (C-141L) recorded	593485
Liner inspection date pursuant to Subparagraph (a) of Paragraph (5) of Subsection A of 19.15.29.11 NMAC	06/11/2026
Was all the impacted materials removed from the liner	Yes
What was the liner inspection surface area in square feet	11415

Remediation Closure Request	
<i>Only answer the questions in this group if seeking remediation closure for this release because all remediation steps have been completed.</i>	
Requesting a remediation closure approval with this submission	Yes
Have the lateral and vertical extents of contamination been fully delineated	Yes
Was this release entirely contained within a lined containment area	Yes
What was the total surface area (in square feet) remediated	11414
What was the total volume (cubic yards) remediated	0
Summarize any additional remediation activities not included by answers (above)	Liner Inspected

The responsible party must attach information demonstrating they have complied with all applicable closure requirements and any conditions or directives of the OCD. This demonstration should be in the form of a comprehensive report (in .pdf format) including a scaled site map, sampling diagrams, relevant field notes, photographs of any excavation prior to backfilling, laboratory data including chain of custody documents of final sampling, and a narrative of the remedial activities. Refer to 19.15.29.12 NMAC.

I hereby certify that the information given above is true and complete to the best of my knowledge and understand that pursuant to OCD rules and regulations all operators are required to report and/or file certain release notifications and perform corrective actions for releases which may endanger public health or the environment. The acceptance of a C-141 report by the OCD does not relieve the operator of liability should their operations have failed to adequately investigate and remediate contamination that pose a threat to groundwater, surface water, human health or the environment. In addition, OCD acceptance of a C-141 report does not relieve the operator of responsibility for compliance with any other federal, state, or local laws and/or regulations. The responsible party acknowledges they must substantially restore, reclaim, and re-vegetate the impacted surface area to the conditions that existed prior to the release or their final land use in accordance with 19.15.29.13 NMAC including notification to the OCD when reclamation and re-vegetation are complete.

I hereby agree and sign off to the above statement	Name: James Raley Title: EHS Professional Email: jim.raley@dmv.com Date: 06/16/2026
--	--

Sante Fe Main Office
Phone: (505) 476-3441

General Information
Phone: (505) 629-6116

Online Phone Directory
<https://www.emnrd.nm.gov/ocd/contact-us>

State of New Mexico
Energy, Minerals and Natural Resources
Oil Conservation Division
1220 S. St Francis Dr.
Santa Fe, NM 87505

CONDITIONS

Action 595744

CONDITIONS

Operator: DEVON ENERGY PRODUCTION COMPANY, LP 333 West Sheridan Ave. Oklahoma City, OK 73102	OGRID: 6137
	Action Number: 595744
	Action Type: [C-141] Remediation Closure Request C-141 (C-141-v-Closure)

CONDITIONS

Created By	Condition	Condition Date
rhamlet	We have received your Remediation Closure Report for Incident #nAPP2611028656 COTTON DRAW 25 CTB 4, thank you. This Remediation Closure Report is approved.	6/17/2026