



P.O. Box 1653
Durango, Colorado 81302
(970) 764-7356
www.cottonwoodconsulting.com

February 2, 2026

Jerrid Brann
Simcoe LLC
1199 Main Ave Suite 101
Durango, CO 81301

**RE: Gallegos Canyon Unit #170
2025 Annual Monitoring Report**

Dear Mr. Brann,

Cottonwood Consulting LLC (Cottonwood) is pleased to provide Simcoe LLC (Simcoe) with the results of the groundwater monitoring conducted at the Gallegos Canyon Unit #170 well site (API 30-045-07658). Details regarding the methodology and associated results are summarized below.

Background

In 1995, remedial excavation of a historic pit was performed at the Gallegos Canyon Unit #170. Some of those impacts remained on site and four groundwater monitoring wells were installed as part of the remediation plan for that project. In 2016, a tank of condensate overflowed on site. Removal of the 2016 impacts was conducted, during which three of the original groundwater monitoring wells were removed, then reinstalled. Four additional groundwater monitoring wells were also installed. See Figure 1 for the locations of all monitoring wells.

In 2017, monitoring demonstrated that benzene, toluene, ethylbenzene, and total xylenes had been remediated and no further sampling of these constituents was required.

Methodology

Groundwater sampling was conducted on June 17 and December 9, 2025. Prior to groundwater sample collection, depth-to-water measurements were collected from all eight groundwater monitoring wells.

Prior to sample collection, approximately three wellbore volumes were purged from each well with new disposable bailers. The groundwater samples were collected following US EPA SW-846 protocol. The groundwater samples were transferred into laboratory-provided containers with the appropriate preservative, stored in a cooler on ice, and submitted with a complete chain-of-custody to Green Analytical Laboratories (GAL) for analysis of metals, pH, TDS (total dissolved solids), conductivity, alkalinity, anions, and cations. Cottonwood also collected field measurements of pH, conductivity, and temperature.

Cottonwood Consulting LLC

Brann, J.
Page 2 of 2

Monitoring Results

Sulfate and TDS were elevated above the New Mexico Water Quality Control Commission (NMWQCC) standard in MW #2A, MW #3A, MW #4A, MW #5, MW #7, MW #8, and MW #9 during one or both of the biannual sampling events conducted in 2025. A groundwater sampling results table is included as Attachment 1 and the groundwater sampling laboratory reports from the 2025 groundwater sampling are included as Attachment 2.

Conclusion

Sulfate and TDS remain above the NMWQCC standard in some groundwater monitoring wells. In the future, Simcoe may advance subsurface soil borings to verify closure standards are met. Simcoe will continue to conduct groundwater monitoring and sampling as required.

Should you have any questions, please do not hesitate to contact me at 970-764-7356. Cottonwood appreciates the opportunity to provide services to Simcoe.

Sincerely,



Kyle Siesser, P.G.
Cottonwood Consulting LLC

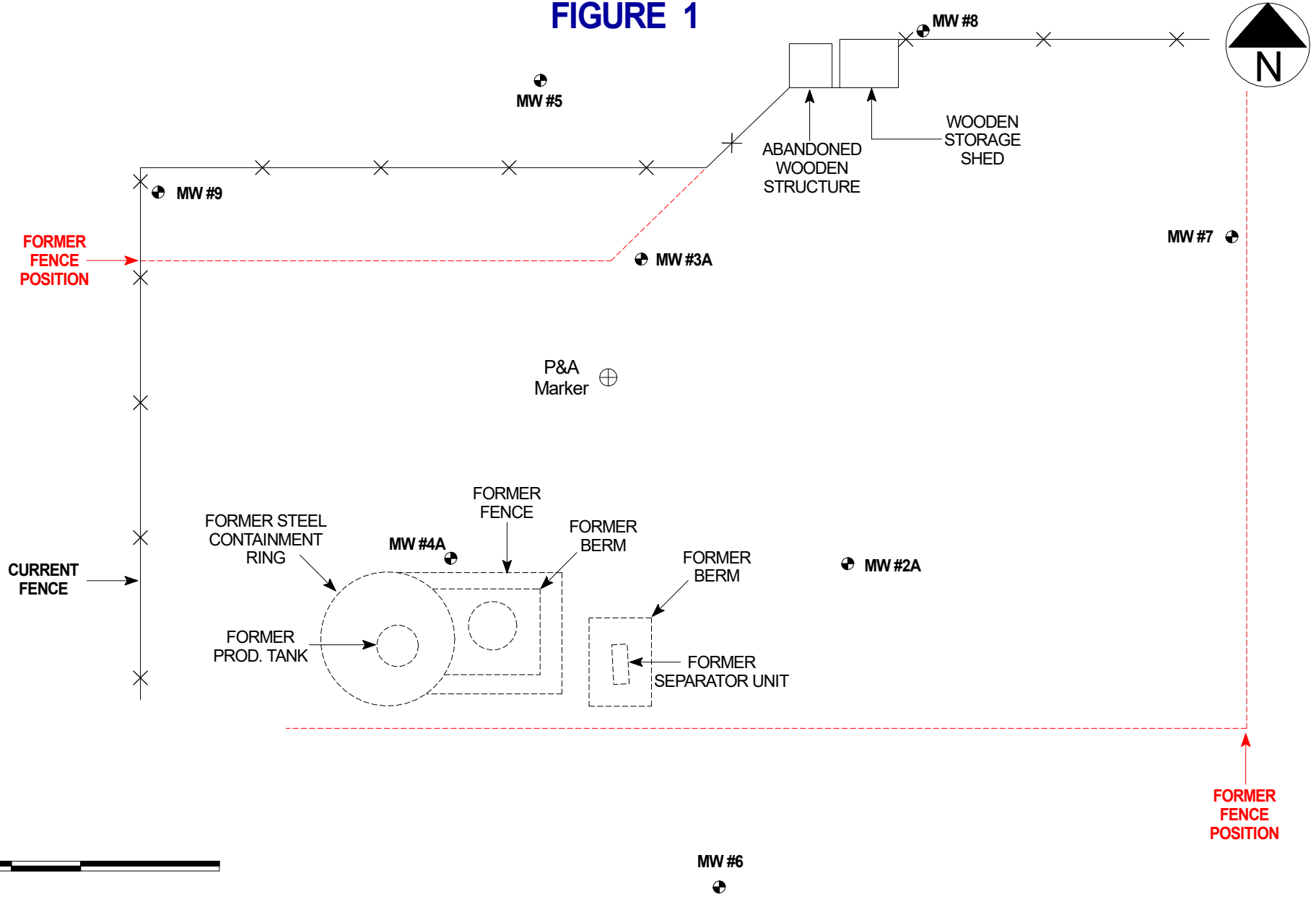
Attachments: Figure 1 – Site Map
Attachment 1 – Groundwater Sampling Results
Attachment 2 – Groundwater Sampling Laboratory Reports

Cottonwood Consulting LLC



FIGURE 1

FIGURE 1



SIMCOE LLC

GCU # 170

NE/4 SW/4 SEC. 35, T29N, R12W

SAN JUAN COUNTY, NEW MEXICO



PROJECT: GROUNDWATER MONITORING

DRAWN BY: NJV

DRAFTED: 04/21/2017

SITE
MAP

May 2017



ATTACHMENT 1



**Gallegos Canyon Unit #170
Groundwater Sampling Results
Simcoe LLC**

Sample ID	Sample Date	Depth to Water (ft)	Well Depth (ft)	Conductivity Lab (umhos)	Conductivity Field (umhos)	Temp. (°C)	pH	Chloride (mg/L)	Sulfate (mg/L)	TDS (mg/L)	Benzene (ppb)	Toluene (ppb)	Ethylbenzene (ppb)	Total Xylenes (ppb)
MW # 2A	04/17/17	8.71	14.80	1,400	1,680	13.2	7.63	8.8	440	1,010	<1.0	<1.0	<1.0	<1.5
MW # 2A	08/10/17	7.43	"	1,100	1,070	16.0	7.63	8.1	220	780	<1.0	<1.0	<1.0	<1.5
MW # 2A	10/19/17	7.02	"	1,200	1,570	15.7	7.45	5.3	210	795	<1.0	<1.0	<1.0	<1.5
MW # 2A	04/10/18	7.21	"	1,400	1,440	14.5	7.49	6.6	340	1,000	-	-	-	-
MW # 2A	09/19/18	6.99	"	1,000	1,310	18.1	7.62	6.0	140	706	-	-	-	-
MW # 2A	06/25/19	6.70	"	1,300	2,000	15.2	7.27	8.6	350	940	-	-	-	-
MW # 2A	12/11/19	8.01	"	1,500	1,490	13.2	7.70	11.0	420	1,090	-	-	-	-
MW # 2A	03/25/20	8.87	"	1,600	1,660	11.4	7.58	17.0	490	1,240	-	-	-	-
MW # 2A	08/12/20	6.47	"	3,700	1,410	16.3	7.36	140.0	1,600	3,060	-	-	-	-
MW # 2A	03/31/21	-	"	2,400	-	-	7.38	100.0	880	1,770	-	-	-	-
MW # 2A	08/17/21	6.81	"	1,600	1,704	19.9	7.33	35.0	480	870	-	-	-	-
MW # 2A	06/08/22	8.16	"	1,600	1,530	15.8	6.99	30.4	366	1,170	-	-	-	-
MW # 2A	12/14/22	7.98	"	2,010	2,220	8.6	7.09	59.4	675	1,470	-	-	-	-
MW # 2A	06/20/23	8.51	"	1,720	1,796	20.3	7.19	33.1	666	1,320	-	-	-	-
MW # 2A	12/14/23	8.13	"	2,210	2,190	11.3	7.24	73.6	804	1,680	-	-	-	-
MW # 2A	06/12/24	8.13	"	3,730	4,000	16.3	6.97	150.0	1,580	3,090	-	-	-	-
MW # 2A	12/10/24	7.64	"	2,920	3,380	9.6	6.93	76.5	1,150	2,300	-	-	-	-
MW # 2A	06/17/25	9.52	"	2,270	2,400	18.7	7.01	63.4	796	1,740	-	-	-	-
MW # 2A	12/09/25	8.50	"	2,290	1,083	21.2	7.04	28.1	851	1,790	-	-	-	-
MW # 3A	04/17/17	7.92	15.88	1,500	1,790	13.1	7.49	13.0	520	1,160	<1.0	<1.0	<1.0	<1.5
MW # 3A	08/10/17	6.74	"	2,100	1,850	16.5	7.59	6.5	980	1,940	<1.0	<1.0	<1.0	<1.5
MW # 3A	10/19/17	6.43	"	2,000	1,250	15.7	7.47	6.1	820	1,670	<1.0	<1.0	<1.0	<1.5
MW # 3A	04/10/18	6.60	"	2,000	1,520	14.4	7.60	9.6	810	1,680	-	-	-	-
MW # 3A	09/19/18	6.39	"	1,700	1,280	18.2	7.62	6.4	710	1,310	-	-	-	-
MW # 3A	06/25/19	7.80	"	1,800	1,410	16.5	7.30	8.0	790	1,550	-	-	-	-
MW # 3A	12/11/19	7.22	"	1,600	1,430	13.1	7.81	8.5	680	1,400	-	-	-	-
MW # 3A	03/25/20	7.98	"	1,800	1,670	10.9	7.96	11.0	820	1,570	-	-	-	-
MW # 3A	08/12/20	6.02	"	1,800	1,790	16.2	7.48	45.0	630	1,290	-	-	-	-
MW # 3A	03/31/21	-	"	1,900	-	-	7.38	12.0	850	1,570	-	-	-	-
MW # 3A	08/17/21	6.25	"	1,800	1,685	20.2	7.41	13.0	810	1,250	-	-	-	-
MW # 3A	06/08/22	7.38	"	1,860	1,740	16.1	7.09	14.3	779	1,530	-	-	-	-
MW # 3A	12/14/22	7.28	"	1,980	2,240	9.1	7.19	37.4	857	1,580	-	-	-	-
MW # 3A	06/20/23	7.70	"	1,850	2,160	17.9	7.23	26.4	843	1,490	-	-	-	-
MW # 3A	12/14/23	7.39	"	2,000	2,170	11.4	7.27	55.2	896	1,550	-	-	-	-
MW # 3A	06/12/24	8.40	"	1,890	2,110	18.2	7.16	34.5	791	1,610	-	-	-	-
MW # 3A	12/10/24	7.10	"	2,320	2,650	10.9	7.05	51.2	984	1,870	-	-	-	-
MW # 3A	06/17/25	9.37	"	2,380	2,500	18.2	7.10	70.5	1,010	2,150	-	-	-	-
MW #3A	12/09/25	7.64	"	2,910	3,300	20.7	7.30	53.3	1,140	2,680	-	-	-	-
MW # 4A	04/17/17	8.86	15.98	1,100	1,450	12.1	7.70	7.7	270	770	<1.0	<1.0	<1.0	<1.5
MW # 4A	08/10/17	7.51	"	950	1,110	16.1	7.73	6.0	140	650	<1.0	<1.0	<1.0	<1.5
MW # 4A	10/19/17	7.10	"	990	1,090	16.3	7.52	7.4	140	596	<1.0	<1.0	<1.0	<1.5
MW # 4A	04/10/18	7.31	"	1,100	1,100	14.8	7.67	10.0	140	740	-	-	-	-
MW # 4A	09/19/18	7.12	"	1,000	1,110	17.8	7.69	8.2	140	690	-	-	-	-
MW # 4A	06/25/19	8.78	"	1,100	1,100	14.9	7.41	10.0	140	185	-	-	-	-
MW # 4A	12/11/19	8.09	"	1,400	1,460	13.6	7.82	79.0	230	955	-	-	-	-
MW # 4A	03/25/20	8.98	"	1,100	1,310	11.0	7.80	27.0	190	820	-	-	-	-
MW # 4A	08/12/20	6.67	"	4,000	5,700	16.8	7.53	340.0	1,500	3,140	-	-	-	-
MW # 4A	03/31/21	-	"	1,200	-	-	7.43	22.0	200	670	-	-	-	-
MW # 4A	08/17/21	6.60	"	1,300	1,353	21.4	7.44	48.0	260	780	-	-	-	-
MW # 4A	06/08/22	8.23	"	1,080	1,040	16.1	7.17	13.1	151	735	-	-	-	-
MW # 4A	12/14/22	8.05	"	959	1,053	9.1	7.17	11.4	153	615	-	-	-	-
MW # 4A	06/20/23	8.59	"	1,630	1,745	20.7	7.19	52.0	457	1,210	-	-	-	-
MW # 4A	12/14/23	8.28	"	1,190	1,321	11.8	7.27	23.0	238	795	-	-	-	-
MW # 4A	06/12/24	8.32	"	1,640	1,695	19.4	7.12	36.0	1,180	2,200	-	-	-	-
MW # 4A	12/10/24	7.79	"	4,550	4,970	9.6	7.13	213.0	1,620	3,270	-	-	-	-
MW # 4A	06/17/25	9.22	"	1,850	1,910	18.7	7.09	113.0	573	1,520	-	-	-	-
MW # 4A	12/09/25	8.20	"	6,860	5,890	20.4	7.02	403.0	2,820	5,410	-	-	-	-
NM/QCC Groundwater Standard							6 - 9	250	600	1,000	5	1000	700	620



**Gallegos Canyon Unit #170
Groundwater Sampling Results
Simcoe LLC**

Sample ID	Sample Date	Depth to Water (ft)	Well Depth (ft)	Conductivity- Lab (umhos)	Conductivity- Field (umhos)	Temp. (°C)	pH	Chloride (mg/L)	Sulfate (mg/L)	TDS (mg/L)	Benzene (ppb)	Toluene (ppb)	Ethylbenzene (ppb)	Total Xylenes (ppb)
MW # 5	04/17/17	7.47	19.24	1,900	1,710	13.3	7.58	12.0	840	1,490	<1.0	<1.0	<1.0	<1.5
MW # 5	08/10/17	6.42	"	4,200	2,200	16.4	7.74	8.4	2,500	3,460	<1.0	<1.0	<1.0	<1.5
MW # 5	10/19/17	6.15	"	3,500	1,620	15.9	7.44	6.1	1,800	3,060	<1.0	<1.0	<1.0	<1.5
MW # 5	04/10/18	6.26	"	2,400	1,830	14.7	7.60	8.7	1,100	2,140	-	-	-	-
MW # 5	09/19/18	6.10	"	2,100	1,360	16.3	7.95	7.3	910	1,610	-	-	-	-
MW # 5	06/25/19	7.29	"	2,200	1,800	15.7	7.37	8.3	1,100	1,610	-	-	-	-
MW # 5	12/11/19	6.82	"	2,000	2,000	13.3	7.87	7.6	980	1,660	-	-	-	-
MW # 5	03/25/20	7.50	"	2,100	2,100	11.8	7.79	11.0	1,100	1,880	-	-	-	-
MW # 5	08/12/20	5.73	"	1,800	1,560	17.1	7.51	12.0	700	1,400	-	-	-	-
MW # 5	03/31/21	-	"	2,200	-	-	7.45	7.5	1,100	1,840	-	-	-	-
MW # 5	08/17/21	5.96	"	2,300	2,220	21.9	7.41	21.0	1,000	1,780	-	-	-	-
MW # 5	06/08/22	6.92	"	1,940	1,680	16.9	7.18	22.5	718	1,540	-	-	-	-
MW # 5	12/14/22	6.87	"	2,370	2,630	6.4	7.24	24.9	1,120	2,040	-	-	-	-
MW # 5	06/20/23	7.30	"	2,180	2,350	18.0	7.28	16.0	1,170	1,880	-	-	-	-
MW # 5	12/14/23	7.03	"	2,100	2,530	9.2	7.16	27.0	967	1,870	-	-	-	-
MW # 5	06/12/24	7.03	"	1,760	1,889	21.7	7.21	17.3	822	1,540	-	-	-	-
MW # 5	12/10/24	7.69	"	2,230	2,550	10.4	6.94	19.1	1,070	2,070	-	-	-	-
MW # 5	06/17/25	7.99	"	2,850	2,780	21.7	7.12	23.0	1,480	2,450	-	-	-	-
MW # 5	12/09/25	7.34	"	3,400	2,910	19.8	7.08	54.3	1,630	2,900	-	-	-	-
MW # 6	04/17/17	9.98	15.98	830	800	12.6	7.61	5.6	85	450	<1.0	<1.0	<1.0	<1.5
MW # 6	08/10/17	8.47	"	820	820	15.8	7.69	7.6	76	560	<1.0	<1.0	<1.0	<1.5
MW # 6	10/19/17	7.98	"	1,000	920	15.6	7.40	5.7	77	540	<1.0	<1.0	<1.0	<1.5
MW # 6	04/10/18	8.27	"	930	900	14.1	7.67	6.8	75	580	-	-	-	-
MW # 6	09/19/18	7.98	"	1,200	1,210	17.9	7.67	16.0	130	780	-	-	-	-
MW # 6	06/25/19	9.99	"	880	850	14.6	7.42	<5.0	72	395	-	-	-	-
MW # 6	12/11/19	9.20	"	830	850	13.6	7.63	4.0	75	610	-	-	-	-
MW # 6	03/25/20	10.21	"	800	800	11.6	7.97	4.3	77	585	-	-	-	-
MW # 6	08/12/20	7.36	"	850	810	17.9	7.60	<2.5	53	516	-	-	-	-
MW # 6	03/31/21	-	"	840	-	-	7.27	4.3	76	535	-	-	-	-
MW # 6	08/17/21	7.56	"	1,000	1,026	23.3	7.32	4.0	72	580	-	-	-	-
MW # 6	06/08/22	9.35	"	918	900	15.4	7.07	5.79	79.9	600	-	-	-	-
MW # 6	12/14/22	9.12	"	849	852	9.2	7.17	4.85	84.1	495	-	-	-	-
MW # 6	06/20/23	9.69	"	796	896	17.5	7.35	4.0	83.1	540	-	-	-	-
MW # 6	12/14/23	9.25	"	868	1,002	11.6	7.19	6.0	87.3	560	-	-	-	-
MW # 6	06/12/24	9.25	"	934	978	20.8	7.11	8.4	121	635	-	-	-	-
MW # 6	12/10/24	8.69	"	1,310	1,650	8.4	6.97	6.1	142	875	-	-	-	-
MW # 6	06/17/25	15.40	"	1,110	1,210	18.0	7.02	4.8	122	700	-	-	-	-
MW # 6	12/09/25	9.26	"	1,170	1,189	20.1	7.08	6.4	96	700	-	-	-	-
MW # 7	04/17/17	9.25	18.78	1,900	1,850	14.1	7.60	7.7	930	1,610	<1.0	<1.0	<1.0	<1.5
MW # 7	08/10/17	8.17	"	1,800	1,960	16.8	7.60	17.0	690	1,570	<1.0	<1.0	<1.0	<1.5
MW # 7	10/19/17	7.81	"	1,900	1,670	16.1	7.40	<5.0	730	1,510	<1.0	<1.0	<1.0	<1.5
MW # 7	04/10/18	7.99	"	1,800	1,710	14.5	7.56	6.6	720	1,480	-	-	-	-
MW # 7	09/19/18	7.72	"	1,500	1,250	17.7	7.66	6.9	500	1,100	-	-	-	-
MW # 7	06/25/19	9.20	"	1,800	1,420	16.6	7.34	9.7	710	1,180	-	-	-	-
MW # 7	12/11/19	8.61	"	1,900	1,770	12.3	7.82	11.0	920	1,670	-	-	-	-
MW # 7	03/25/20	9.36	"	1,900	1,830	10.8	7.95	8.6	940	1,680	-	-	-	-
MW # 7	08/12/20	7.39	"	1,700	1,490	17.1	7.66	15.0	730	1,350	-	-	-	-
MW # 7	03/31/21	-	"	1,900	-	-	7.29	16.0	840	1,580	-	-	-	-
MW # 7	08/17/21	7.65	"	2,000	2,040	20.0	7.46	14.0	1,000	1,440	-	-	-	-
MW # 7	06/08/22	8.79	"	1,850	1,810	15.9	7.02	22.6	794	1,570	-	-	-	-
MW # 7	12/14/22	8.63	"	1,860	2,030	7.0	7.15	15.6	857	1,440	-	-	-	-
MW # 7	06/20/23	9.09	"	1,790	1,940	20.6	7.24	14.0	878	1,500	-	-	-	-
MW # 7	12/14/23	8.78	"	1,750	1,934	11.6	7.31	8.53	882	1,500	-	-	-	-
MW # 7	06/12/24	8.76	"	1,300	1,518	16.4	7.14	18.0	421	1,010	-	-	-	-
MW # 7	12/10/24	8.35	"	2,250	2,580	9.6	7.01	63.8	993	1,850	-	-	-	-
MW # 7	06/17/25	10.83	"	2,310	2,300	17.9	6.97	55.7	1,010	1,970	-	-	-	-
MW # 7	12/09/25	8.94	"	2,070	1,957	22.1	7.24	62.6	1,040	2,010	-	-	-	-
NMQCC Groundwater Standard							6 - 9	250	600	1,000	5	1000	700	620



**Gallegos Canyon Unit #170
Groundwater Sampling Results
Simcoe LLC**

Sample ID	Sample Date	Depth to Water (ft)	Well Depth (ft)	Conductivity Lab (umhos)	Conductivity- Field (umhos)	Temp. (°C)	pH	Chloride (mg/L)	Sulfate (mg/L)	TDS (mg/L)	Benzene (ppb)	Toluene (ppb)	Ethylbenzene (ppb)	Total Xylenes (ppb)
MW # 8	04/17/17	8.63	18.08	2,300	2,300	13.4	7.58	12.0	1,200	1,880	<1.0	<1.0	<1.0	<1.5
MW # 8	08/10/17	7.78	"	2,000	1,900	16.3	7.69	8.7	1,100	1,760	<1.0	<1.0	<1.0	<1.5
MW # 8	10/19/17	7.54	"	2,200	1,780	15.7	7.53	6.3	920	1,760	<1.0	<1.0	<1.0	<1.5
MW # 8	04/10/18	7.64	"	2,000	1,880	14.2	7.63	7.5	680	1,600	-	-	-	-
MW # 8	09/19/18	7.45	"	2,100	1,820	16.0	8.10	15.0	910	1,650	-	-	-	-
MW # 8	06/25/19	8.54	"	2,000	1,190	15.6	7.40	8.2	930	1,660	-	-	-	-
MW # 8	12/11/19	8.12	"	2,200	2,100	12.6	7.84	11.0	990	1,940	-	-	-	-
MW # 8	03/25/20	8.72	"	2,100	2,000	11.0	7.97	8.9	1,200	1,970	-	-	-	-
MW # 8	08/12/20	7.20	"	2,600	2,600	15.9	7.61	33.0	1,100	2,120	-	-	-	-
MW # 8	03/31/21	-	"	2,200	-	-	7.40	8.2	1,100	1,990	-	-	-	-
MW # 8	08/17/21	7.40	"	2,000	1,968	21.1	7.52	12.0	980	1,600	-	-	-	-
MW # 8	06/08/22	8.28	"	1,020	1,950	15.2	7.17	24.7	152	705	-	-	-	-
MW # 8	12/14/22	8.21	"	2,090	2,250	5.8	7.32	8.3	1,080	1,720	-	-	-	-
MW # 8	06/20/23	8.56	"	2,120	2,200	19.6	7.33	9.01	1,150	1,910	-	-	-	-
MW # 8	12/14/23	8.35	"	2,060	2,320	10.0	7.36	10.3	1,060	1,830	-	-	-	-
MW # 8	06/12/24	8.34	"	1,980	2,070	16.5	7.16	8.4	1,030	1,740	-	-	-	-
MW # 8	12/10/24	8.10	"	1,890	2,180	9.6	7.09	9.8	898	1,600	-	-	-	-
MW # 8	06/17/25	14.34	"	2,100	2,180	16.2	7.14	19.9	803	1,520	-	-	-	-
MW # 8	12/09/25	9.89	"	2,020	2,030	20.4	7.17	7.8	995	1,700	-	-	-	-
MW # 9	04/17/17	11.38	18.43	1,200	1,530	13.8	7.75	55.0	220	800	<1.0	<1.0	<1.0	<1.5
MW # 9	08/10/17	10.16	"	1,100	1,210	16.3	7.81	38.0	210	850	<1.0	<1.0	<1.0	<1.5
MW # 9	10/19/17	9.84	"	1,200	1,070	16.3	7.66	21.0	190	710	<1.0	<1.0	<1.0	<1.5
MW # 9	04/10/18	9.98	"	970	1,240	14.5	7.72	24.0	120	615	-	-	-	-
MW # 9	09/19/18	9.85	"	1,100	1,180	16.4	7.91	22.0	150	700	-	-	-	-
MW # 9	06/25/19	11.22	"	1,100	240	14.4	7.56	23.0	220	650	-	-	-	-
MW # 9	12/11/19	10.63	"	1,500	1,450	13.6	7.88	18.0	500	1,180	-	-	-	-
MW # 9	03/25/20	11.44	"	1,500	1,440	11.6	7.91	31.0	460	1,060	-	-	-	-
MW # 9	08/12/20	9.36	"	1,400	2,400	16.5	7.71	93.0	230	932	-	-	-	-
MW # 9	03/31/21	-	"	990	-	-	7.39	18.0	200	630	-	-	-	-
MW # 9	08/17/21	9.58	"	1,100	1,084	20.3	7.60	19.0	240	635	-	-	-	-
MW # 9	06/08/22	10.81	"	2,110	1,010	17.1	7.15	8.81	982	1,840	-	-	-	-
MW # 9	12/14/22	10.63	"	1,170	1,280	3.8	7.32	18.0	281	775	-	-	-	-
MW # 9	06/20/23	11.10	"	1,650	1,796	18.2	7.31	12.3	702	1,420	-	-	-	-
MW # 9	12/14/23	7.90	"	1,370	1,507	11.6	7.28	13.0	468	1,020	-	-	-	-
MW # 9	06/12/24	10.94	"	1,110	1,226	16.3	7.31	16.3	248	785	-	-	-	-
MW # 9	12/10/24	10.53	"	4,750	5,340	10.1	6.91	881.0	982	3,370	-	-	-	-
MW # 9	06/17/25	12.80	"	2,100	1,450	18.7	7.14	19.9	803	1,520	-	-	-	-
MW # 9	12/09/25	11.08	"	1,090	1,083	20.7	7.25	14.5	182	695	-	-	-	-
NMWQCC Groundwater Standard							6 - 9	250	600	1,000	5	1000	700	620

Notes:

TDS - Total Dissolved Solids

ft - feet

mg/L - milligrams per liter

umhos - microhms

ppb - parts per billion

"-" - Indicates no data

NMWQCC - New Mexico Water Quality Control Commission

Depth to water measured from top of well casing

Bold values exceed NMWQCC Standard

°C - degrees Celsius



ATTACHMENT 2



75 Suttle Street
Durango, CO 81303
970.247.4220 Phone
jeremy.allen@greenanalytical.com

01 July 2025

Kyle Siesser
Cottonwood Consulting
PO Box 1653
Durango, CO 81302
RE: GCU #170

Enclosed are the results of analyses for samples received by the laboratory on 06/17/25 16:50. The data to follow was performed, in whole or in part, by Green Analytical Laboratories. Any data that was performed by a subcontract laboratory is included within the GAL report, or with an additional report attached.

If you need any further assistance, please feel free to contact me.

Sincerely,

A handwritten signature in blue ink that reads "Jeremy D. Allen". The signature is written in a cursive style and is enclosed in a light blue rectangular box.

Report Station For Jeremy D Allen
Laboratory Director

All accredited analytes contained in this report are denoted by an asterisk (*). For a complete list of accredited analytes please do not hesitate to contact us via any of the contact information contained in this report. All of our certifications can be viewed at <http://greenanalytical.com/certifications/>

Green Analytical Laboratories is NELAP accredited through the Texas Commission on Environmental Quality. Accreditation applies to drinking water and non-potable water matrices for trace metals and a variety of inorganic parameters. Green Analytical Laboratories is also accredited through the Colorado Department of Public Health and Environment and EPA region 8 for trace metals, Cyanide, Fluoride, Nitrate, and Nitrite in drinking water. TNI Certificate Number: TX-C25-00079

Our affiliate laboratory, Cardinal Laboratories, is also NELAP accredited through the Texas Commission on Environmental Quality for a variety of organic constituents in drinking water, non-potable water and solid matrices. Cardinal is also accredited for regulated VOCs, TTHM, and HAA-5 in drinking water through the Colorado Department of Public Health and Environment and EPA region 8. TNI Certificate Number: TX-C25-00101

Table of Contents

Samples in Report	3
Sample Results	4
2506234-01: MW #2A	4
2506234-02: MW #3A	5
2506234-03: MW #4A	6
2506234-04: MW #5	7
2506234-05: MW #6	8
2506234-06: MW #7	9
2506234-07: MW #8	10
2506234-08: MW #9	11
Quality Assurance Results	12
Notes and Definitions	18
Qualifier Summary	19
Chain of Custody & Attachments	20



Cottonwood Consulting	Project: Anions, ICP Metals, Wet Chem	
PO Box 1653	Project Name / Number: GCU #170	Reported:
Durango CO, 81302	Project Manager: Kyle Siesser	07/01/25 14:49

ANALYTICAL REPORT FOR SAMPLES

Sample ID	Laboratory ID	Matrix	Date Sampled	Date Received	Notes
MW #2A	2506234-01	Water	06/17/25 12:15	06/17/25 16:50	
MW #3A	2506234-02	Water	06/17/25 12:25	06/17/25 16:50	
MW #4A	2506234-03	Water	06/17/25 12:30	06/17/25 16:50	
MW #5	2506234-04	Water	06/17/25 11:40	06/17/25 16:50	
MW #6	2506234-05	Water	06/17/25 12:05	06/17/25 16:50	
MW #7	2506234-06	Water	06/17/25 11:55	06/17/25 16:50	
MW #8	2506234-07	Water	06/17/25 11:45	06/17/25 16:50	
MW #9	2506234-08	Water	06/17/25 12:40	06/17/25 16:50	

Green Analytical Laboratories

Report Station For Jeremy D Allen, Laboratory Director

The results in this report apply to the samples analyzed in accordance with the chain of custody document. This analytical report must be reproduced in its entirety. In no event shall Green Analytical Laboratories be liable for incidental or consequential damages. GALs liability, and clients exclusive remedy for any claim arising, shall be limited to the amount paid by client for analyses. All claims, including those for negligence and any other cause whatsoever, shall be deemed waived unless made in writing and received within thirty days after completion of the applicable service.



Cottonwood Consulting
 PO Box 1653
 Durango CO, 81302

Project: Anions, ICP Metals, Wet Chem
 Project Name / Number: GCU #170
 Project Manager: Kyle Siesser

Reported:
 07/01/25 14:49

MW #2A

2506234-01 (Ground Water)

Sampled Date: 06/17/25 12:15

Sampled By: Dylan Songer & Kelsey O'Brien

Analyte	Result	RL	MDL	Units	Dilution	Analyzed	Method	Notes	Analyst
---------	--------	----	-----	-------	----------	----------	--------	-------	---------

General Chemistry

Alkalinity, Total as CaCO3*	430	10.0	5.55	mg/L	5	06/25/25 14:30	2320 B		AES
Alkalinity, Hydroxide as CaCO3*	<10.0	10.0	5.55	mg/L	5	06/25/25 14:30	2320 B		AES
Alkalinity, Carbonate as CaCO3*	<10.0	10.0	5.55	mg/L	5	06/25/25 14:30	2320 B		AES
Alkalinity, Bicarbonate as CaCO3*	430	10.0	5.55	mg/L	5	06/25/25 14:30	2320 B		AES
Bromide	0.818	0.200	0.0548	mg/L	2	06/26/25 22:41	EPA 300.0		AWG
Chloride*	63.4	2.00	0.994	mg/L	2	06/26/25 22:41	EPA 300.0		AWG
Conductivity*	2270	1.00		umho/cm@25 C	1	06/19/25 09:53	2510 B		HIC
Fluoride*	0.650	0.200	0.0673	mg/L	2	06/26/25 22:41	EPA 300.0		AWG
Nitrate as N*	2.45	0.100	0.029	mg/L	5	06/19/25 08:30	EPA 300.0		AWG
Nitrate+Nitrite as N by IC	2.45	0.120	0.0353	mg/L	5	06/19/25 08:30	EPA 300.0		AWG
Nitrite as N*	<0.020	0.020	0.006	mg/L	1	06/18/25 18:46	EPA 300.0		AWG
Ortho-Phosphate as P*	<0.0500	0.0500	0.0242	mg/L	1	06/18/25 18:46	EPA 300.0		AWG
pH*	7.01			pH Units	1	06/19/25 09:53	EPA 150.1/9040C		HIC
pH Temperature, degrees C	18.7			pH Units	1	06/19/25 09:53	EPA 150.1/9040C		HIC
Sulfate*	796	20.0	11.3	mg/L	20	06/27/25 13:44	EPA 300.0		AWG
Total Dissolved Solids*	1740	10.0		mg/L	1	06/24/25 11:47	EPA 160.1/SM 2540C		AES

Total Recoverable Metals by ICP (E200.7)

Calcium*	345	0.200	0.158	mg/L	1	06/27/25 15:18	EPA 200.7		AWG
Magnesium*	50.0	0.100	0.063	mg/L	1	06/27/25 15:18	EPA 200.7		AWG
Potassium*	3.77	1.00	0.212	mg/L	1	06/27/25 15:18	EPA 200.7		AWG
Sodium*	233	1.00	0.406	mg/L	1	06/27/25 15:18	EPA 200.7		AWG

Green Analytical Laboratories

Report Station For Jeremy D Allen, Laboratory Director

The results in this report apply to the samples analyzed in accordance with the chain of custody document. This analytical report must be reproduced in its entirety. In no event shall Green Analytical Laboratories be liable for incidental or consequential damages. GALs liability, and clients exclusive remedy for any claim arising, shall be limited to the amount paid by client for analyses. All claims, including those for negligence and any other cause whatsoever, shall be deemed waived unless made in writing and received within thirty days after completion of the applicable service.



Cottonwood Consulting
 PO Box 1653
 Durango CO, 81302

Project: Anions, ICP Metals, Wet Chem
 Project Name / Number: GCU #170
 Project Manager: Kyle Siesser

Reported:
 07/01/25 14:49

MW #3A

2506234-02 (Ground Water)

Sampled Date: 06/17/25 12:25

Sampled By: Dylan Songer & Kelsey O'Brien

Analyte	Result	RL	MDL	Units	Dilution	Analyzed	Method	Notes	Analyst
---------	--------	----	-----	-------	----------	----------	--------	-------	---------

General Chemistry

Alkalinity, Total as CaCO3*	370	10.0	5.55	mg/L	5	06/25/25 14:30	2320 B		AES
Alkalinity, Hydroxide as CaCO3*	<10.0	10.0	5.55	mg/L	5	06/25/25 14:30	2320 B		AES
Alkalinity, Carbonate as CaCO3*	<10.0	10.0	5.55	mg/L	5	06/25/25 14:30	2320 B		AES
Alkalinity, Bicarbonate as CaCO3*	370	10.0	5.55	mg/L	5	06/25/25 14:30	2320 B		AES
Bromide	0.966	0.200	0.0548	mg/L	2	06/26/25 23:06	EPA 300.0		AWG
Chloride*	70.5	2.00	0.994	mg/L	2	06/26/25 23:06	EPA 300.0		AWG
Conductivity*	2380	1.00		umho/cm@25 C	1	06/19/25 09:53	2510 B		HIC
Fluoride*	0.924	0.200	0.0673	mg/L	2	06/26/25 23:06	EPA 300.0		AWG
Nitrate as N*	5.04	0.200	0.059	mg/L	10	06/19/25 09:27	EPA 300.0		AWG
Nitrate+Nitrite as N by IC	5.04	0.220	0.0647	mg/L	10	06/19/25 09:27	EPA 300.0		AWG
Nitrite as N*	<0.020	0.020	0.006	mg/L	1	06/18/25 20:21	EPA 300.0		AWG
Ortho-Phosphate as P*	<0.0500	0.0500	0.0242	mg/L	1	06/18/25 20:21	EPA 300.0		AWG
pH*	7.10			pH Units	1	06/19/25 09:53	EPA 150.1/9040C		HIC
pH Temperature, degrees C	18.8			pH Units	1	06/19/25 09:53	EPA 150.1/9040C		HIC
Sulfate*	1010	20.0	11.3	mg/L	20	06/27/25 14:08	EPA 300.0		AWG
Total Dissolved Solids*	2150	10.0		mg/L	1	06/24/25 11:49	EPA 160.1/SM 2540C		AES

Total Recoverable Metals by ICP (E200.7)

Calcium*	388	0.200	0.158	mg/L	1	06/27/25 15:29	EPA 200.7		AWG
Magnesium*	51.4	0.100	0.063	mg/L	1	06/27/25 15:29	EPA 200.7		AWG
Potassium*	3.93	1.00	0.212	mg/L	1	06/27/25 15:29	EPA 200.7		AWG
Sodium*	203	1.00	0.406	mg/L	1	06/27/25 15:29	EPA 200.7		AWG

Green Analytical Laboratories

Report Station For Jeremy D Allen, Laboratory Director

The results in this report apply to the samples analyzed in accordance with the chain of custody document. This analytical report must be reproduced in its entirety. In no event shall Green Analytical Laboratories be liable for incidental or consequential damages. GALs liability, and clients exclusive remedy for any claim arising, shall be limited to the amount paid by client for analyses. All claims, including those for negligence and any other cause whatsoever, shall be deemed waived unless made in writing and received within thirty days after completion of the applicable service.



Cottonwood Consulting
 PO Box 1653
 Durango CO, 81302

Project: Anions, ICP Metals, Wet Chem
 Project Name / Number: GCU #170
 Project Manager: Kyle Siesser

Reported:
 07/01/25 14:49

MW #4A

2506234-03 (Ground Water)

Sampled Date: 06/17/25 12:30

Sampled By: Dylan Songer & Kelsey O'Brien

Analyte	Result	RL	MDL	Units	Dilution	Analyzed	Method	Notes	Analyst
---------	--------	----	-----	-------	----------	----------	--------	-------	---------

General Chemistry

Alkalinity, Total as CaCO3*	555	10.0	5.55	mg/L	5	06/25/25 14:30	2320 B		AES
Alkalinity, Hydroxide as CaCO3*	<10.0	10.0	5.55	mg/L	5	06/25/25 14:30	2320 B		AES
Alkalinity, Carbonate as CaCO3*	<10.0	10.0	5.55	mg/L	5	06/25/25 14:30	2320 B		AES
Alkalinity, Bicarbonate as CaCO3*	555	10.0	5.55	mg/L	5	06/25/25 14:30	2320 B		AES
Bromide	1.37	0.200	0.0548	mg/L	2	06/27/25 00:19	EPA 300.0		AWG
Chloride*	113	2.00	0.994	mg/L	2	06/27/25 00:19	EPA 300.0		AWG
Conductivity*	1850	1.00		umho/cm@25 C	1	06/19/25 09:53	2510 B		HIC
Fluoride*	0.834	0.200	0.0673	mg/L	2	06/27/25 00:19	EPA 300.0		AWG
Nitrate as N*	0.112	0.020	0.006	mg/L	1	06/18/25 20:40	EPA 300.0		AWG
Nitrate+Nitrite as N by IC	0.112	0.0400	0.0119	mg/L	1	06/18/25 20:40	EPA 300.0		AWG
Nitrite as N*	<0.020	0.020	0.006	mg/L	1	06/18/25 20:40	EPA 300.0		AWG
Ortho-Phosphate as P*	<0.0500	0.0500	0.0242	mg/L	1	06/18/25 20:40	EPA 300.0		AWG
pH*	7.09			pH Units	1	06/19/25 09:53	EPA 150.1/9040C		HIC
pH Temperature, degrees C	19.1			pH Units	1	06/19/25 09:53	EPA 150.1/9040C		HIC
Sulfate*	573	20.0	11.3	mg/L	20	06/27/25 15:22	EPA 300.0		AWG
Total Dissolved Solids*	1520	10.0		mg/L	1	06/24/25 11:51	EPA 160.1/SM 2540C		AES

Total Recoverable Metals by ICP (E200.7)

Calcium*	285	0.200	0.158	mg/L	1	06/27/25 15:33	EPA 200.7		AWG
Magnesium*	59.2	0.100	0.063	mg/L	1	06/27/25 15:33	EPA 200.7		AWG
Potassium*	6.60	1.00	0.212	mg/L	1	06/27/25 15:33	EPA 200.7		AWG
Sodium*	180	1.00	0.406	mg/L	1	06/27/25 15:33	EPA 200.7		AWG

Green Analytical Laboratories

Report Station For Jeremy D Allen, Laboratory Director

The results in this report apply to the samples analyzed in accordance with the chain of custody document. This analytical report must be reproduced in its entirety. In no event shall Green Analytical Laboratories be liable for incidental or consequential damages. GALs liability, and clients exclusive remedy for any claim arising, shall be limited to the amount paid by client for analyses. All claims, including those for negligence and any other cause whatsoever, shall be deemed waived unless made in writing and received within thirty days after completion of the applicable service.



Cottonwood Consulting
 PO Box 1653
 Durango CO, 81302

Project: Anions, ICP Metals, Wet Chem
 Project Name / Number: GCU #170
 Project Manager: Kyle Siesser

Reported:
 07/01/25 14:49

MW #5

2506234-04 (Ground Water)

Sampled Date: 06/17/25 11:40

Sampled By: Dylan Songer & Kelsey O'Brien

Analyte	Result	RL	MDL	Units	Dilution	Analyzed	Method	Notes	Analyst
---------	--------	----	-----	-------	----------	----------	--------	-------	---------

General Chemistry

Alkalinity, Total as CaCO3*	300	10.0	5.55	mg/L	5	06/25/25 14:30	2320 B		AES
Alkalinity, Hydroxide as CaCO3*	<10.0	10.0	5.55	mg/L	5	06/25/25 14:30	2320 B		AES
Alkalinity, Carbonate as CaCO3*	<10.0	10.0	5.55	mg/L	5	06/25/25 14:30	2320 B		AES
Alkalinity, Bicarbonate as CaCO3*	300	10.0	5.55	mg/L	5	06/25/25 14:30	2320 B		AES
Bromide	0.290	0.200	0.0548	mg/L	2	06/27/25 02:21	EPA 300.0		AWG
Chloride*	23.0	2.00	0.994	mg/L	2	06/27/25 02:21	EPA 300.0		AWG
Conductivity*	2850	1.00		umho/cm@25 C	1	06/19/25 09:53	2510 B		HIC
Fluoride*	0.690	0.200	0.0673	mg/L	2	06/27/25 02:21	EPA 300.0		AWG
Nitrate as N*	5.43	0.200	0.059	mg/L	10	06/19/25 09:46	EPA 300.0		AWG
Nitrate+Nitrite as N by IC	5.43	0.220	0.0647	mg/L	10	06/19/25 09:46	EPA 300.0		AWG
Nitrite as N*	<0.020	0.020	0.006	mg/L	1	06/18/25 20:59	EPA 300.0		AWG
Ortho-Phosphate as P*	<0.0500	0.0500	0.0242	mg/L	1	06/18/25 20:59	EPA 300.0		AWG
pH*	7.12			pH Units	1	06/19/25 09:53	EPA 150.1/9040C		HIC
pH Temperature, degrees C	19.4			pH Units	1	06/19/25 09:53	EPA 150.1/9040C		HIC
Sulfate*	1480	20.0	11.3	mg/L	20	06/27/25 15:46	EPA 300.0		AWG
Total Dissolved Solids*	2450	10.0		mg/L	1	06/24/25 11:53	EPA 160.1/SM 2540C		AES

Total Recoverable Metals by ICP (E200.7)

Calcium*	405	0.200	0.158	mg/L	1	06/27/25 15:37	EPA 200.7		AWG
Magnesium*	60.5	0.100	0.063	mg/L	1	06/27/25 15:37	EPA 200.7		AWG
Potassium*	9.08	1.00	0.212	mg/L	1	06/27/25 15:37	EPA 200.7		AWG
Sodium*	303	1.00	0.406	mg/L	1	06/27/25 15:37	EPA 200.7		AWG

Green Analytical Laboratories

Report Station For Jeremy D Allen, Laboratory Director

The results in this report apply to the samples analyzed in accordance with the chain of custody document. This analytical report must be reproduced in its entirety. In no event shall Green Analytical Laboratories be liable for incidental or consequential damages. GALs liability, and clients exclusive remedy for any claim arising, shall be limited to the amount paid by client for analyses. All claims, including those for negligence and any other cause whatsoever, shall be deemed waived unless made in writing and received within thirty days after completion of the applicable service.



Cottonwood Consulting
 PO Box 1653
 Durango CO, 81302

Project: Anions, ICP Metals, Wet Chem
 Project Name / Number: GCU #170
 Project Manager: Kyle Siesser

Reported:
 07/01/25 14:49

MW #6

2506234-05 (Ground Water)

Sampled Date: 06/17/25 12:05

Sampled By: Dylan Songer & Kelsey O'Brien

Analyte	Result	RL	MDL	Units	Dilution	Analyzed	Method	Notes	Analyst
---------	--------	----	-----	-------	----------	----------	--------	-------	---------

General Chemistry

Alkalinity, Total as CaCO3*	525	10.0	5.55	mg/L	5	06/25/25 14:30	2320 B		AES
Alkalinity, Hydroxide as CaCO3*	<10.0	10.0	5.55	mg/L	5	06/25/25 14:30	2320 B		AES
Alkalinity, Carbonate as CaCO3*	<10.0	10.0	5.55	mg/L	5	06/25/25 14:30	2320 B		AES
Alkalinity, Bicarbonate as CaCO3*	525	10.0	5.55	mg/L	5	06/25/25 14:30	2320 B		AES
Bromide	<0.100	0.100	0.0274	mg/L	1	06/27/25 02:46	EPA 300.0		AWG
Chloride*	4.78	1.00	0.497	mg/L	1	06/27/25 02:46	EPA 300.0		AWG
Conductivity*	1110	1.00		umho/cm@25 C	1	06/19/25 09:53	2510 B		HIC
Fluoride*	0.502	0.100	0.0336	mg/L	1	06/27/25 02:46	EPA 300.0		AWG
Nitrate as N*	0.128	0.020	0.006	mg/L	1	06/18/25 21:18	EPA 300.0		AWG
Nitrate+Nitrite as N by IC	0.128	0.0400	0.0119	mg/L	1	06/18/25 21:18	EPA 300.0		AWG
Nitrite as N*	<0.020	0.020	0.006	mg/L	1	06/18/25 21:18	EPA 300.0		AWG
Ortho-Phosphate as P*	<0.0500	0.0500	0.0242	mg/L	1	06/18/25 21:18	EPA 300.0		AWG
pH*	7.02			pH Units	1	06/19/25 09:53	EPA 150.1/9040C		HIC
pH Temperature, degrees C	20.4			pH Units	1	06/19/25 09:53	EPA 150.1/9040C		HIC
Sulfate*	122	1.00	0.563	mg/L	1	06/27/25 02:46	EPA 300.0		AWG
Total Dissolved Solids*	700	10.0		mg/L	1	06/24/25 11:55	EPA 160.1/SM 2540C		AES

Total Recoverable Metals by ICP (E200.7)

Calcium*	222	0.200	0.158	mg/L	1	06/27/25 15:41	EPA 200.7		AWG
Magnesium*	27.9	0.100	0.063	mg/L	1	06/27/25 15:41	EPA 200.7		AWG
Potassium*	4.71	1.00	0.212	mg/L	1	06/27/25 15:41	EPA 200.7		AWG
Sodium*	42.2	1.00	0.406	mg/L	1	06/27/25 15:41	EPA 200.7		AWG

Green Analytical Laboratories

Report Station For Jeremy D Allen, Laboratory Director

The results in this report apply to the samples analyzed in accordance with the chain of custody document. This analytical report must be reproduced in its entirety. In no event shall Green Analytical Laboratories be liable for incidental or consequential damages. GALs liability, and clients exclusive remedy for any claim arising, shall be limited to the amount paid by client for analyses. All claims, including those for negligence and any other cause whatsoever, shall be deemed waived unless made in writing and received within thirty days after completion of the applicable service.



Cottonwood Consulting
 PO Box 1653
 Durango CO, 81302

Project: Anions, ICP Metals, Wet Chem
 Project Name / Number: GCU #170
 Project Manager: Kyle Siesser

Reported:
 07/01/25 14:49

MW #7

2506234-06 (Ground Water)

Sampled Date: 06/17/25 11:55

Sampled By: Dylan Songer & Kelsey O'Brien

Analyte	Result	RL	MDL	Units	Dilution	Analyzed	Method	Notes	Analyst
---------	--------	----	-----	-------	----------	----------	--------	-------	---------

General Chemistry

Alkalinity, Total as CaCO3*	320	10.0	5.55	mg/L	5	06/25/25 14:30	2320 B		AES
Alkalinity, Hydroxide as CaCO3*	<10.0	10.0	5.55	mg/L	5	06/25/25 14:30	2320 B		AES
Alkalinity, Carbonate as CaCO3*	<10.0	10.0	5.55	mg/L	5	06/25/25 14:30	2320 B		AES
Alkalinity, Bicarbonate as CaCO3*	320	10.0	5.55	mg/L	5	06/25/25 14:30	2320 B		AES
Bromide	0.890	0.200	0.0548	mg/L	2	06/27/25 03:10	EPA 300.0		AWG
Chloride*	55.7	2.00	0.994	mg/L	2	06/27/25 03:10	EPA 300.0		AWG
Conductivity*	2310	1.00		umho/cm@25 C	1	06/19/25 09:53	2510 B		HIC
Fluoride*	0.748	0.200	0.0673	mg/L	2	06/27/25 03:10	EPA 300.0		AWG
Nitrate as N*	4.43	0.100	0.029	mg/L	5	06/19/25 10:05	EPA 300.0		AWG
Nitrate+Nitrite as N by IC	4.43	0.120	0.0353	mg/L	5	06/19/25 10:05	EPA 300.0		AWG
Nitrite as N*	<0.020	0.020	0.006	mg/L	1	06/18/25 21:37	EPA 300.0		AWG
Ortho-Phosphate as P*	<0.0500	0.0500	0.0242	mg/L	1	06/18/25 21:37	EPA 300.0		AWG
pH*	6.97			pH Units	1	06/19/25 09:53	EPA 150.1/9040C		HIC
pH Temperature, degrees C	21.0			pH Units	1	06/19/25 09:53	EPA 150.1/9040C		HIC
Sulfate*	1010	20.0	11.3	mg/L	20	06/27/25 16:11	EPA 300.0		AWG
Total Dissolved Solids*	1870	10.0		mg/L	1	06/24/25 11:57	EPA 160.1/SM 2540C		AES

Total Recoverable Metals by ICP (E200.7)

Calcium*	407	0.200	0.158	mg/L	1	06/27/25 15:47	EPA 200.7		AWG
Magnesium*	49.1	0.100	0.063	mg/L	1	06/27/25 15:47	EPA 200.7		AWG
Potassium*	3.53	1.00	0.212	mg/L	1	06/27/25 15:47	EPA 200.7		AWG
Sodium*	151	1.00	0.406	mg/L	1	06/27/25 15:47	EPA 200.7		AWG

Green Analytical Laboratories

Report Station For Jeremy D Allen, Laboratory Director

The results in this report apply to the samples analyzed in accordance with the chain of custody document. This analytical report must be reproduced in its entirety. In no event shall Green Analytical Laboratories be liable for incidental or consequential damages. GALs liability, and clients exclusive remedy for any claim arising, shall be limited to the amount paid by client for analyses. All claims, including those for negligence and any other cause whatsoever, shall be deemed waived unless made in writing and received within thirty days after completion of the applicable service.



Cottonwood Consulting
 PO Box 1653
 Durango CO, 81302

Project: Anions, ICP Metals, Wet Chem
 Project Name / Number: GCU #170
 Project Manager: Kyle Siesser

Reported:
 07/01/25 14:49

MW #8

2506234-07 (Ground Water)

Sampled Date: 06/17/25 11:45

Sampled By: Dylan Songer & Kelsey O'Brien

Analyte	Result	RL	MDL	Units	Dilution	Analyzed	Method	Notes	Analyst
---------	--------	----	-----	-------	----------	----------	--------	-------	---------

General Chemistry

Alkalinity, Total as CaCO3*	310	10.0	5.55	mg/L	5	06/25/25 14:30	2320 B		AES
Alkalinity, Hydroxide as CaCO3*	<10.0	10.0	5.55	mg/L	5	06/25/25 14:30	2320 B		AES
Alkalinity, Carbonate as CaCO3*	<10.0	10.0	5.55	mg/L	5	06/25/25 14:30	2320 B		AES
Alkalinity, Bicarbonate as CaCO3*	310	10.0	5.55	mg/L	5	06/25/25 14:30	2320 B		AES
Bromide	0.220	0.200	0.0548	mg/L	2	06/27/25 03:34	EPA 300.0		AWG
Chloride*	19.9	2.00	0.994	mg/L	2	06/27/25 03:34	EPA 300.0		AWG
Conductivity*	2100	1.00		umho/cm@25 C	1	06/19/25 09:53	2510 B		HIC
Fluoride*	0.556	0.200	0.0673	mg/L	2	06/27/25 03:34	EPA 300.0		AWG
Nitrate as N*	16.1	0.200	0.059	mg/L	10	06/19/25 10:24	EPA 300.0		AWG
Nitrate+Nitrite as N by IC	16.0	0.220	0.0647	mg/L	10	06/19/25 10:24	EPA 300.0		AWG
Nitrite as N*	<0.020	0.020	0.006	mg/L	1	06/18/25 21:56	EPA 300.0		AWG
Ortho-Phosphate as P*	<0.0500	0.0500	0.0242	mg/L	1	06/18/25 21:56	EPA 300.0		AWG
pH*	7.14			pH Units	1	06/19/25 09:53	EPA 150.1/9040C		HIC
pH Temperature, degrees C	20.6			pH Units	1	06/19/25 09:53	EPA 150.1/9040C		HIC
Sulfate*	803	20.0	11.3	mg/L	20	06/27/25 16:35	EPA 300.0		AWG
Total Dissolved Solids*	1520	10.0		mg/L	1	06/24/25 11:59	EPA 160.1/SM 2540C		AES

Total Recoverable Metals by ICP (E200.7)

Calcium*	<0.200	0.200	0.158	mg/L	1	06/27/25 15:51	EPA 200.7		AWG
Magnesium*	<0.100	0.100	0.063	mg/L	1	06/27/25 15:51	EPA 200.7		AWG
Potassium*	<1.00	1.00	0.212	mg/L	1	06/27/25 15:51	EPA 200.7		AWG
Sodium*	<1.00	1.00	0.406	mg/L	1	06/27/25 15:51	EPA 200.7		AWG

Green Analytical Laboratories

Report Station For Jeremy D Allen, Laboratory Director

The results in this report apply to the samples analyzed in accordance with the chain of custody document. This analytical report must be reproduced in its entirety. In no event shall Green Analytical Laboratories be liable for incidental or consequential damages. GALs liability, and clients exclusive remedy for any claim arising, shall be limited to the amount paid by client for analyses. All claims, including those for negligence and any other cause whatsoever, shall be deemed waived unless made in writing and received within thirty days after completion of the applicable service.



Cottonwood Consulting
 PO Box 1653
 Durango CO, 81302

Project: Anions, ICP Metals, Wet Chem
 Project Name / Number: GCU #170
 Project Manager: Kyle Siesser

Reported:
 07/01/25 14:49

MW #9

2506234-08 (Ground Water)

Sampled Date: 06/17/25 12:40

Sampled By: Dylan Songer & Kelsey O'Brien

Analyte	Result	RL	MDL	Units	Dilution	Analyzed	Method	Notes	Analyst
---------	--------	----	-----	-------	----------	----------	--------	-------	---------

General Chemistry

Alkalinity, Total as CaCO3*	475	10.0	5.55	mg/L	5	06/25/25 14:30	2320 B		AES
Alkalinity, Hydroxide as CaCO3*	<10.0	10.0	5.55	mg/L	5	06/25/25 14:30	2320 B		AES
Alkalinity, Carbonate as CaCO3*	<10.0	10.0	5.55	mg/L	5	06/25/25 14:30	2320 B		AES
Alkalinity, Bicarbonate as CaCO3*	475	10.0	5.55	mg/L	5	06/25/25 14:30	2320 B		AES
Bromide	0.164	0.100	0.0274	mg/L	1	06/27/25 03:59	EPA 300.0		AWG
Chloride*	56.0	1.00	0.497	mg/L	1	06/27/25 03:59	EPA 300.0		AWG
Conductivity*	1390	1.00		umho/cm@25 C	1	06/19/25 09:53	2510 B		HIC
Fluoride*	0.474	0.100	0.0336	mg/L	1	06/27/25 03:59	EPA 300.0		AWG
Nitrate as N*	0.560	0.020	0.006	mg/L	1	06/18/25 22:15	EPA 300.0		AWG
Nitrate+Nitrite as N by IC	0.560	0.0400	0.0119	mg/L	1	06/18/25 22:15	EPA 300.0		AWG
Nitrite as N*	<0.020	0.020	0.006	mg/L	1	06/18/25 22:15	EPA 300.0		AWG
Ortho-Phosphate as P*	<0.0500	0.0500	0.0242	mg/L	1	06/18/25 22:15	EPA 300.0		AWG
pH*	7.04			pH Units	1	06/19/25 09:53	EPA 150.1/9040C		HIC
pH Temperature, degrees C	21.3			pH Units	1	06/19/25 09:53	EPA 150.1/9040C		HIC
Sulfate*	227	5.00	2.81	mg/L	5	06/27/25 16:59	EPA 300.0		AWG
Total Dissolved Solids*	865	10.0		mg/L	1	06/24/25 12:01	EPA 160.1/SM 2540C		AES

Total Recoverable Metals by ICP (E200.7)

Calcium*	<0.200	0.200	0.158	mg/L	1	06/27/25 15:52	EPA 200.7		AWG
Magnesium*	<0.100	0.100	0.063	mg/L	1	06/27/25 15:52	EPA 200.7		AWG
Potassium*	<1.00	1.00	0.212	mg/L	1	06/27/25 15:52	EPA 200.7		AWG
Sodium*	<1.00	1.00	0.406	mg/L	1	06/27/25 15:52	EPA 200.7		AWG

Green Analytical Laboratories

Report Station For Jeremy D Allen, Laboratory Director

The results in this report apply to the samples analyzed in accordance with the chain of custody document. This analytical report must be reproduced in its entirety. In no event shall Green Analytical Laboratories be liable for incidental or consequential damages. GALs liability, and clients exclusive remedy for any claim arising, shall be limited to the amount paid by client for analyses. All claims, including those for negligence and any other cause whatsoever, shall be deemed waived unless made in writing and received within thirty days after completion of the applicable service.



Cottonwood Consulting
 PO Box 1653
 Durango CO, 81302

Project: Anions, ICP Metals, Wet Chem
 Project Name / Number: GCU #170
 Project Manager: Kyle Siesser

Reported:
 07/01/25 14:49

General Chemistry - Quality Control

Analyte	Result	Reporting Limit	Units	Spike Level	Source Result	%REC	%REC Limits	RPD	RPD Limit	Notes
---------	--------	-----------------	-------	-------------	---------------	------	-------------	-----	-----------	-------

Batch B251727 - IC- Ion Chromatograph

Blank (B251727-BLK1)

Prepared & Analyzed: 06/18/25

Nitrate as N	ND	0.020	mg/L							
Nitrite as N	ND	0.020	mg/L							
Ortho-Phosphate as P	ND	0.0500	mg/L							

LCS (B251727-BS1)

Prepared & Analyzed: 06/18/25

Nitrate as N	0.957	0.020	mg/L	1.00		95.7	90-110			
Nitrite as N	1.01	0.020	mg/L	1.00		101	90-110			
Ortho-Phosphate as P	0.961	0.0500	mg/L	1.00		96.1	90-110			

LCS Dup (B251727-BSD1)

Prepared & Analyzed: 06/18/25

Nitrate as N	0.956	0.020	mg/L	1.00		95.6	90-110	0.0732	20	
Nitrite as N	1.01	0.020	mg/L	1.00		101	90-110	0.366	20	
Ortho-Phosphate as P	0.964	0.0500	mg/L	1.00		96.4	90-110	0.260	20	

Matrix Spike (B251727-MS1)

Source: 2506234-01 Prepared: 06/18/25 Analyzed: 06/19/25

Nitrate as N	3.36	0.100	mg/L	1.00	2.45	90.5	85-115			
Nitrite as N	1.72	0.020	mg/L	1.00	ND	172	85-115			M1
Ortho-Phosphate as P	0.919	0.0500	mg/L	1.00	ND	91.9	85-115			

Matrix Spike (B251727-MS2)

Source: 2506235-01 Prepared & Analyzed: 06/18/25

Nitrate as N	0.906	0.020	mg/L	1.00	ND	90.6	85-115			
Nitrite as N	0.916	0.020	mg/L	1.00	ND	91.6	85-115			
Ortho-Phosphate as P	0.897	0.0500	mg/L	1.00	ND	89.7	85-115			

Matrix Spike Dup (B251727-MSD1)

Source: 2506234-01 Prepared: 06/18/25 Analyzed: 06/19/25

Nitrate as N	3.35	0.100	mg/L	1.00	2.45	89.2	85-115	0.403	20	
Nitrite as N	1.74	0.020	mg/L	1.00	ND	174	85-115	1.20	20	M1
Ortho-Phosphate as P	0.936	0.0500	mg/L	1.00	ND	93.6	85-115	1.85	20	

Matrix Spike Dup (B251727-MSD2)

Source: 2506235-01 Prepared & Analyzed: 06/18/25

Nitrate as N	0.925	0.020	mg/L	1.00	ND	92.5	85-115	2.11	20	
Nitrite as N	0.939	0.020	mg/L	1.00	ND	93.9	85-115	2.51	20	
Ortho-Phosphate as P	0.903	0.0500	mg/L	1.00	ND	90.3	85-115	0.700	20	

Batch B251794 - General Prep - Wet Chem

Blank (B251794-BLK1)

Prepared & Analyzed: 06/24/25

Total Dissolved Solids	ND	10.0	mg/L							
------------------------	----	------	------	--	--	--	--	--	--	--

Duplicate (B251794-DUP1)

Source: 2506221-01 Prepared & Analyzed: 06/24/25

Green Analytical Laboratories

The results in this report apply to the samples analyzed in accordance with the chain of custody document. This analytical report must be reproduced in its entirety. In no event shall Green Analytical Laboratories be liable for incidental or consequential damages. GALs liability, and clients exclusive remedy for any claim arising, shall be limited to the amount paid by client for analyses. All claims, including those for negligence and any other cause whatsoever, shall be deemed waived unless made in writing and received within thirty days after completion of the applicable service.

Report Station For Jeremy D Allen, Laboratory Director



Cottonwood Consulting
 PO Box 1653
 Durango CO, 81302

Project: Anions, ICP Metals, Wet Chem
 Project Name / Number: GCU #170
 Project Manager: Kyle Siesser

Reported:
 07/01/25 14:49

**General Chemistry - Quality Control
 (Continued)**

Analyte	Result	Reporting Limit	Units	Spike Level	Source Result	%REC	%REC Limits	RPD	RPD Limit	Notes
---------	--------	-----------------	-------	-------------	---------------	------	-------------	-----	-----------	-------

Batch B251794 - General Prep - Wet Chem (Continued)

Duplicate (B251794-DUP1) (Continued)

Source: 2506221-01 Prepared & Analyzed: 06/24/25

Total Dissolved Solids	60.0	10.0	mg/L		85.1			34.6	20	R1
------------------------	------	------	------	--	------	--	--	------	----	----

Reference (B251794-SRM1)

Prepared & Analyzed: 06/24/25

Total Dissolved Solids	405	10.0	mg/L	400		101	85-115			
------------------------	-----	------	------	-----	--	-----	--------	--	--	--

Batch B251808 - IC- Ion Chromatograph

Blank (B251808-BLK1)

Prepared: 06/25/25 Analyzed: 06/26/25

Bromide	ND	0.100	mg/L							
Chloride	ND	1.00	mg/L							
Fluoride	ND	0.100	mg/L							
Sulfate	ND	1.00	mg/L							

LCS (B251808-BS1)

Prepared: 06/25/25 Analyzed: 06/26/25

Bromide	2.38	0.100	mg/L	2.50		95.3	90-110			
Chloride	24.1	1.00	mg/L	25.0		96.5	90-110			
Fluoride	2.56	0.100	mg/L	2.50		102	90-110			
Sulfate	24.2	1.00	mg/L	25.0		96.6	90-110			

LCS Dup (B251808-BSD1)

Prepared: 06/25/25 Analyzed: 06/26/25

Bromide	2.41	0.100	mg/L	2.50		96.4	90-110	1.17	20	
Chloride	24.4	1.00	mg/L	25.0		97.7	90-110	1.30	20	
Fluoride	2.59	0.100	mg/L	2.50		104	90-110	1.20	20	
Sulfate	24.5	1.00	mg/L	25.0		97.9	90-110	1.30	20	

Matrix Spike (B251808-MS1)

Source: 2506213-02 Prepared: 06/25/25 Analyzed: 06/26/25

Bromide	2.39	0.100	mg/L	2.50	ND	95.8	85-115			
Chloride	60.8	1.00	mg/L	25.0	36.5	97.5	85-115			
Fluoride	2.55	0.100	mg/L	2.50	ND	102	85-115			
Sulfate	24.4	1.00	mg/L	25.0	ND	97.6	85-115			

Matrix Spike (B251808-MS2)

Source: 2506221-01 Prepared: 06/25/25 Analyzed: 06/26/25

Bromide	2.40	0.100	mg/L	2.50	ND	95.8	85-115			
Chloride	25.0	1.00	mg/L	25.0	ND	100	85-115			
Fluoride	2.61	0.100	mg/L	2.50	0.0850	101	85-115			
Sulfate	41.0	1.00	mg/L	25.0	15.8	101	85-115			

Matrix Spike Dup (B251808-MSD1)

Source: 2506213-02 Prepared: 06/25/25 Analyzed: 06/26/25

Bromide	2.40	0.100	mg/L	2.50	ND	95.9	85-115	0.125	20	
Chloride	61.2	1.00	mg/L	25.0	36.5	98.7	85-115	0.508	20	
Fluoride	2.59	0.100	mg/L	2.50	ND	104	85-115	1.64	20	
Sulfate	24.8	1.00	mg/L	25.0	ND	99.3	85-115	1.71	20	

Green Analytical Laboratories

The results in this report apply to the samples analyzed in accordance with the chain of custody document. This analytical report must be reproduced in its entirety. In no event shall Green Analytical Laboratories be liable for incidental or consequential damages. GALs liability, and clients exclusive remedy for any claim arising, shall be limited to the amount paid by client for analyses. All claims, including those for negligence and any other cause whatsoever, shall be deemed waived unless made in writing and received within thirty days after completion of the applicable service.

Report Station For Jeremy D Allen, Laboratory Director



Cottonwood Consulting
PO Box 1653
Durango CO, 81302

Project: Anions, ICP Metals, Wet Chem
Project Name / Number: GCU #170
Project Manager: Kyle Siesser

Reported:
07/01/25 14:49

**General Chemistry - Quality Control
(Continued)**

Analyte	Result	Reporting Limit	Units	Spike Level	Source Result	%REC	%REC Limits	RPD	RPD Limit	Notes
---------	--------	-----------------	-------	-------------	---------------	------	-------------	-----	-----------	-------

Batch B251808 - IC- Ion Chromatograph (Continued)

Matrix Spike Dup (B251808-MSD2)

Source: 2506221-01 Prepared: 06/25/25 Analyzed: 06/26/25

Bromide	2.46	0.100	mg/L	2.50	ND	98.4	85-115	2.68	20	
Chloride	25.7	1.00	mg/L	25.0	ND	103	85-115	2.75	20	
Fluoride	2.69	0.100	mg/L	2.50	0.0850	104	85-115	3.05	20	
Sulfate	41.7	1.00	mg/L	25.0	15.8	103	85-115	1.68	20	

Batch B251810 - General Prep - Wet Chem

Duplicate (B251810-DUP1)

Source: 2506227-01 Prepared & Analyzed: 06/19/25

pH	7.77		pH Units		7.73			0.516	20	
pH Temperature, degrees C	18.2		pH Units		17.6			3.35	200	

Duplicate (B251810-DUP2)

Source: 2506234-01 Prepared & Analyzed: 06/19/25

pH	7.03		pH Units		7.01			0.285	20	
pH Temperature, degrees C	18.9		pH Units		18.7			1.06	200	

Batch B251812 - General Prep - Wet Chem

Duplicate (B251812-DUP1)

Source: 2506227-01 Prepared & Analyzed: 06/19/25

Conductivity	1730	1.00	umho/cm@2 5C		1790			3.64	20	
--------------	------	------	-----------------	--	------	--	--	------	----	--

Duplicate (B251812-DUP2)

Source: 2506234-01 Prepared & Analyzed: 06/19/25

Conductivity	2240	1.00	umho/cm@2 5C		2270			1.20	20	
--------------	------	------	-----------------	--	------	--	--	------	----	--

Reference (B251812-SRM1)

Prepared & Analyzed: 06/19/25

Conductivity	934	1.00	umho/cm@2 5C	1000		93.4	90-110			
--------------	-----	------	-----------------	------	--	------	--------	--	--	--

Batch B251815 - General Prep - Wet Chem

Blank (B251815-BLK1)

Prepared & Analyzed: 06/25/25

Alkalinity, Bicarbonate as CaCO3	ND	10.0	mg/L							
Alkalinity, Carbonate as CaCO3	ND	10.0	mg/L							
Alkalinity, Hydroxide as CaCO3	ND	10.0	mg/L							
Alkalinity, Total as CaCO3	ND	10.0	mg/L							

LCS (B251815-BS1)

Prepared & Analyzed: 06/25/25

Alkalinity, Total as CaCO3	104	10.0	mg/L	100		104	85-115			
----------------------------	-----	------	------	-----	--	-----	--------	--	--	--

LCS Dup (B251815-BSD1)

Prepared & Analyzed: 06/25/25

Alkalinity, Total as CaCO3	104	10.0	mg/L	100		104	85-115	0.00	20	
----------------------------	-----	------	------	-----	--	-----	--------	------	----	--

Matrix Spike (B251815-MS1)

Source: 2506203-02 Prepared & Analyzed: 06/25/25

Green Analytical Laboratories

The results in this report apply to the samples analyzed in accordance with the chain of custody document. This analytical report must be reproduced in its entirety. In no event shall Green Analytical Laboratories be liable for incidental or consequential damages. GALs liability, and clients exclusive remedy for any claim arising, shall be limited to the amount paid by client for analyses. All claims, including those for negligence and any other cause whatsoever, shall be deemed waived unless made in writing and received within thirty days after completion of the applicable service.

Report Station For Jeremy D Allen, Laboratory Director



Cottonwood Consulting
 PO Box 1653
 Durango CO, 81302

Project: Anions, ICP Metals, Wet Chem
 Project Name / Number: GCU #170
 Project Manager: Kyle Siesser

Reported:
 07/01/25 14:49

**General Chemistry - Quality Control
 (Continued)**

Analyte	Result	Reporting Limit	Units	Spike Level	Source Result	%REC	%REC Limits	RPD	RPD Limit	Notes
---------	--------	-----------------	-------	-------------	---------------	------	-------------	-----	-----------	-------

Batch B251815 - General Prep - Wet Chem (Continued)

Matrix Spike (B251815-MS1) (Continued)

Source: 2506203-02 Prepared & Analyzed: 06/25/25

Alkalinity, Total as CaCO3	350	10.0	mg/L	200	128	111	80-120			
----------------------------	-----	------	------	-----	-----	-----	--------	--	--	--

Matrix Spike (B251815-MS2)

Source: 2506203-03 Prepared & Analyzed: 06/25/25

Alkalinity, Total as CaCO3	136	10.0	mg/L	100	49.0	87.0	80-120			
----------------------------	-----	------	------	-----	------	------	--------	--	--	--

Matrix Spike Dup (B251815-MSD1)

Source: 2506203-02 Prepared & Analyzed: 06/25/25

Alkalinity, Total as CaCO3	344	10.0	mg/L	200	128	108	80-120	1.73	20	
----------------------------	-----	------	------	-----	-----	-----	--------	------	----	--

Matrix Spike Dup (B251815-MSD2)

Source: 2506203-03 Prepared & Analyzed: 06/25/25

Alkalinity, Total as CaCO3	150	10.0	mg/L	100	49.0	101	80-120	9.79	20	
----------------------------	-----	------	------	-----	------	-----	--------	------	----	--

Reference (B251815-SRM1)

Prepared & Analyzed: 06/25/25

Alkalinity, Total as CaCO3	106	10.0	mg/L	100		106	85-115			
----------------------------	-----	------	------	-----	--	-----	--------	--	--	--

Batch B251831 - IC- Ion Chromatograph

Blank (B251831-BLK1)

Prepared: 06/26/25 Analyzed: 06/27/25

Bromide	ND	0.100	mg/L							
Chloride	ND	1.00	mg/L							
Fluoride	ND	0.100	mg/L							
Sulfate	ND	1.00	mg/L							

LCS (B251831-BS1)

Prepared: 06/26/25 Analyzed: 06/27/25

Bromide	2.34	0.100	mg/L	2.50		93.4	90-110			
Chloride	24.3	1.00	mg/L	25.0		97.3	90-110			
Fluoride	2.57	0.100	mg/L	2.50		103	90-110			
Sulfate	24.4	1.00	mg/L	25.0		97.6	90-110			

LCS Dup (B251831-BSD1)

Prepared: 06/26/25 Analyzed: 06/27/25

Bromide	2.38	0.100	mg/L	2.50		95.1	90-110	1.78	20	
Chloride	24.6	1.00	mg/L	25.0		98.6	90-110	1.28	20	
Fluoride	2.61	0.100	mg/L	2.50		105	90-110	1.50	20	
Sulfate	24.7	1.00	mg/L	25.0		98.8	90-110	1.23	20	

Matrix Spike (B251831-MS1)

Source: 2506250-01 Prepared: 06/26/25 Analyzed: 06/27/25

Bromide	2.40	0.100	mg/L	2.50	0.0950	92.3	85-115			
Chloride	99.0	1.00	mg/L	25.0	75.3	94.7	85-115			
Fluoride	2.94	0.100	mg/L	2.50	0.457	99.3	85-115			
Sulfate	444	10.0	mg/L	25.0	426	73.1	85-115			

M3

Matrix Spike (B251831-MS2)

Source: 2506280-01 Prepared: 06/26/25 Analyzed: 06/27/25

Bromide	2.41	0.100	mg/L	2.50	ND	96.2	85-115			
Chloride	27.8	1.00	mg/L	25.0	3.05	99.0	85-115			

Green Analytical Laboratories

The results in this report apply to the samples analyzed in accordance with the chain of custody document. This analytical report must be reproduced in its entirety. In no event shall Green Analytical Laboratories be liable for incidental or consequential damages. GALs liability, and clients exclusive remedy for any claim arising, shall be limited to the amount paid by client for analyses. All claims, including those for negligence and any other cause whatsoever, shall be deemed waived unless made in writing and received within thirty days after completion of the applicable service.

Report Station For Jeremy D Allen, Laboratory Director



Cottonwood Consulting
 PO Box 1653
 Durango CO, 81302

Project: Anions, ICP Metals, Wet Chem
 Project Name / Number: GCU #170
 Project Manager: Kyle Siesser

Reported:
 07/01/25 14:49

**General Chemistry - Quality Control
 (Continued)**

Analyte	Result	Reporting Limit	Units	Spike Level	Source Result	%REC	%REC Limits	RPD	RPD Limit	Notes
---------	--------	-----------------	-------	-------------	---------------	------	-------------	-----	-----------	-------

Batch B251831 - IC- Ion Chromatograph (Continued)

Matrix Spike (B251831-MS2) (Continued)

Source: 2506280-01 Prepared: 06/26/25 Analyzed: 06/27/25

Fluoride	2.60	0.100	mg/L	2.50	0.127	98.8	85-115			
Sulfate	203	5.00	mg/L	25.0	188	60.0	85-115			M3

Matrix Spike Dup (B251831-MSD1)

Source: 2506250-01 Prepared: 06/26/25 Analyzed: 06/27/25

Bromide	2.47	0.100	mg/L	2.50	0.0950	95.0	85-115	2.71	20	
Chloride	99.6	1.00	mg/L	25.0	75.3	97.2	85-115	0.606	20	
Fluoride	3.01	0.100	mg/L	2.50	0.457	102	85-115	2.22	20	
Sulfate	434	10.0	mg/L	25.0	426	34.5	85-115	2.20	20	M3

Matrix Spike Dup (B251831-MSD2)

Source: 2506280-01 Prepared: 06/26/25 Analyzed: 06/27/25

Bromide	2.44	0.100	mg/L	2.50	ND	97.4	85-115	1.20	20	
Chloride	28.1	1.00	mg/L	25.0	3.05	100	85-115	1.07	20	
Fluoride	2.62	0.100	mg/L	2.50	0.127	99.8	85-115	0.996	20	
Sulfate	199	5.00	mg/L	25.0	188	45.9	85-115	1.75	20	M3

Green Analytical Laboratories

Report Station For Jeremy D Allen, Laboratory Director

The results in this report apply to the samples analyzed in accordance with the chain of custody document. This analytical report must be reproduced in its entirety. In no event shall Green Analytical Laboratories be liable for incidental or consequential damages. GALs liability, and clients exclusive remedy for any claim arising, shall be limited to the amount paid by client for analyses. All claims, including those for negligence and any other cause whatsoever, shall be deemed waived unless made in writing and received within thirty days after completion of the applicable service.



Cottonwood Consulting
 PO Box 1653
 Durango CO, 81302

Project: Anions, ICP Metals, Wet Chem
 Project Name / Number: GCU #170
 Project Manager: Kyle Siesser

Reported:
 07/01/25 14:49

Total Recoverable Metals by ICP (E200.7) - Quality Control

Analyte	Result	Reporting Limit	Units	Spike Level	Source Result	%REC	%REC Limits	RPD	RPD Limit	Notes
---------	--------	-----------------	-------	-------------	---------------	------	-------------	-----	-----------	-------

Batch B251762 - Total Recoverable by ICP

Blank (B251762-BLK1)

Prepared: 06/20/25 Analyzed: 06/26/25

Calcium	ND	0.200	mg/L							
Magnesium	ND	0.100	mg/L							
Potassium	ND	1.00	mg/L							
Sodium	ND	1.00	mg/L							

LCS (B251762-BS1)

Prepared: 06/20/25 Analyzed: 06/26/25

Calcium	2.26	0.200	mg/L	2.00		113	85-115			
Magnesium	10.8	0.100	mg/L	10.0		108	85-115			
Potassium	4.61	1.00	mg/L	4.00		115	85-115			
Sodium	1.75	1.00	mg/L	1.62		108	85-115			

LCS Dup (B251762-BSD1)

Prepared: 06/20/25 Analyzed: 06/26/25

Calcium	2.30	0.200	mg/L	2.00		115	85-115	1.88	20	
Magnesium	10.7	0.100	mg/L	10.0		107	85-115	1.21	20	
Potassium	4.12	1.00	mg/L	4.00		103	85-115	11.0	20	
Sodium	1.84	1.00	mg/L	1.62		113	85-115	4.84	20	

Matrix Spike (B251762-MS1)

Source: 2506234-01

Prepared: 06/20/25 Analyzed: 06/27/25

Calcium	354	0.200	mg/L	2.00	345	424	70-130			M3
Magnesium	63.1	0.100	mg/L	10.0	50.0	130	70-130			
Potassium	9.80	1.00	mg/L	4.00	3.77	151	70-130			M1
Sodium	238	1.00	mg/L	1.62	233	340	70-130			M3

Matrix Spike Dup (B251762-MSD1)

Source: 2506234-01

Prepared: 06/20/25 Analyzed: 06/27/25

Calcium	345	1.00	mg/L	2.00	345	NR	70-130	2.47	20	M3
Magnesium	62.6	0.500	mg/L	10.0	50.0	126	70-130	0.672	20	
Potassium	9.36	5.00	mg/L	4.00	3.77	140	70-130	4.54	20	M1
Sodium	229	5.00	mg/L	1.62	233	NR	70-130	3.88	20	M3

Green Analytical Laboratories

The results in this report apply to the samples analyzed in accordance with the chain of custody document. This analytical report must be reproduced in its entirety. In no event shall Green Analytical Laboratories be liable for incidental or consequential damages. GALs liability, and clients exclusive remedy for any claim arising, shall be limited to the amount paid by client for analyses. All claims, including those for negligence and any other cause whatsoever, shall be deemed waived unless made in writing and received within thirty days after completion of the applicable service.

Report Station For Jeremy D Allen, Laboratory Director



Cottonwood Consulting
 PO Box 1653
 Durango CO, 81302

Project: Anions, ICP Metals, Wet Chem
 Project Name / Number: GCU #170
 Project Manager: Kyle Siesser

Reported:
 07/01/25 14:49

Notes and Definitions

R1 Duplicate sample RPD exceeded laboratory acceptance criteria. Sample(s) may be difficult to homogenize.

M3 Matrix spike recovery did not meet acceptance criteria. Accuracy of the spike is reduced since the analyte concentration in the sample is more than four times the spike level.

M1 Matrix spike recovery was above laboratory acceptance criteria.

DET Analyte DETECTED

ND Analyte NOT DETECTED at or above the reporting limit

NR Not Reported

dry Sample results reported on a dry weight basis
 *Results reported on as received basis unless designated as dry.

RPD Relative Percent Difference

LCS Laboratory Control Sample (Blank Spike)

RL Report Limit

MDL Method Detection Limit

Green Analytical Laboratories

A handwritten signature in blue ink that reads 'Jeremy D. Allen'.

Report Station For Jeremy D Allen, Laboratory Director

The results in this report apply to the samples analyzed in accordance with the chain of custody document. This analytical report must be reproduced in its entirety. In no event shall Green Analytical Laboratories be liable for incidental or consequential damages. GALs liability, and clients exclusive remedy for any claim arising, shall be limited to the amount paid by client for analyses. All claims, including those for negligence and any other cause whatsoever, shall be deemed waived unless made in writing and received within thirty days after completion of the applicable service.



Cottonwood Consulting
 PO Box 1653
 Durango CO, 81302

Project: Anions, ICP Metals, Wet Chem
 Project Name / Number: GCU #170
 Project Manager: Kyle Siesser

Reported:
 07/01/25 14:49

Qualifier Summary

LabNumber	Analysis	Analyte	Qualifier	TextBody
B251727-MS1	Nitrite [IC]	Nitrite as N	M1	Matrix spike recovery was above laboratory acceptance criteria.
B251727-MSD1	Nitrite [IC]	Nitrite as N	M1	Matrix spike recovery was above laboratory acceptance criteria.
B251762-MS1	Calcium 200.2 by ICP	Calcium	M3	Matrix spike recovery did not meet acceptance criteria. Accuracy of the spike is reduced since the analyte concentration in the sample is more than four times the spike level.
B251762-MS1	Potassium 200.2 by ICP	Potassium	M1	Matrix spike recovery was above laboratory acceptance criteria.
B251762-MS1	Sodium 200.2 by ICP	Sodium	M3	Matrix spike recovery did not meet acceptance criteria. Accuracy of the spike is reduced since the analyte concentration in the sample is more than four times the spike level.
B251762-MSD1	Calcium 200.2 by ICP	Calcium	M3	Matrix spike recovery did not meet acceptance criteria. Accuracy of the spike is reduced since the analyte concentration in the sample is more than four times the spike level.
B251762-MSD1	Potassium 200.2 by ICP	Potassium	M1	Matrix spike recovery was above laboratory acceptance criteria.
B251762-MSD1	Sodium 200.2 by ICP	Sodium	M3	Matrix spike recovery did not meet acceptance criteria. Accuracy of the spike is reduced since the analyte concentration in the sample is more than four times the spike level.
B251794-DUP1	Total Dissolved Solids [TDS]	Total Dissolved Solids	R1	Duplicate sample RPD exceeded laboratory acceptance criteria. Sample(s) may be difficult to homogenize.
B251831-MS1	Sulfate [IC]	Sulfate	M3	Matrix spike recovery did not meet acceptance criteria. Accuracy of the spike is reduced since the analyte concentration in the sample is more than four times the spike level.
B251831-MS2	Sulfate [IC]	Sulfate	M3	Matrix spike recovery did not meet acceptance criteria. Accuracy of the spike is reduced since the analyte concentration in the sample is more than four times the spike level.
B251831-MSD1	Sulfate [IC]	Sulfate	M3	Matrix spike recovery did not meet acceptance criteria. Accuracy of the spike is reduced since the analyte concentration in the sample is more than four times the spike level.
B251831-MSD2	Sulfate [IC]	Sulfate	M3	Matrix spike recovery did not meet acceptance criteria. Accuracy of the spike is reduced since the analyte concentration in the sample is more than four times the spike level.

Green Analytical Laboratories

Report Station For Jeremy D Allen, Laboratory Director

The results in this report apply to the samples analyzed in accordance with the chain of custody document. This analytical report must be reproduced in its entirety. In no event shall Green Analytical Laboratories be liable for incidental or consequential damages. GALs liability, and clients exclusive remedy for any claim arising, shall be limited to the amount paid by client for analyses. All claims, including those for negligence and any other cause whatsoever, shall be deemed waived unless made in writing and received within thirty days after completion of the applicable service.



75 Suttle Street
Durango, CO 81303
(970) 247-4220

CHAIN-OF-CUSTODY AND ANALYSIS R
FORM-006, R 8.0 JEST

Note: Write-Out™ or similar products cannot be used on the Chain of Custody

Bill to (if different):

ANALYSIS REQUEST

Company or Client: Cottonwood Consulting LLC

Address: PO Box 1653
City: Durango State: CO Zip: 81302

Phone #: 970-764-7356

Contact Person: Kyle Siesser

Email Report to: ksiesser@cottonwoodconsulting.com

Project Name(optional): GCU #170

Sampler Name (Print): Kelsey O'Brien / Dylan Sawyer

Lab I.D. 9506-234
Lab Use Only

Sample Name or Location	Collected		Matrix (check one)							# of containers					
	Date	Time	GROUNDWATER	SURFACE WATER	WASTEWATER	PRODUCED WATER	DRINKING WATER	SOIL	OTHER:	No preservation	Nitric Acid	Hydrochloric Acid	Sulfuric Acid	Sodium Hydroxide	OTHER:
1) MW #2A	6/17/25	12:15	✓							2	1				
2) MW #3A		12:25	✓												
3) MW #4A		12:30	✓												
4) MW #5		1:40	✓												
5) MW #6		12:05	✓												
6) MW #7		11:55	✓												
7) MW #8		11:45	✓												
8) MW #9		12:40	✓												
9)															
10)															

PLEASE NOTE: GAL's liability and client's exclusive remedy for any claim arising whether based in contract or tort, shall be limited to the amount paid by the client for the analyses. All claims including those for negligence and any other cause whatsoever shall be deemed waived unless made in writing and received by GAL within 30 days after completion of the applicable service. In no event shall GAL be liable for incidental or consequential damages, including without limitation, business interruptions, loss of use, or loss of profits incurred by client, its subsidiaries, affiliates or successors arising out of or related to the performance of services hereunder by GAL, regardless of whether such claim is based upon any of the above stated reasons or otherwise.

Relinquished By: *[Signature]* Date: 6/17/25 Time: 16:50
 Received By: *[Signature]* Date: 6/17/25 Time: 16:50
 Relinquished By: _____ Date: _____ Time: _____
 Received By: _____ Date: _____ Time: _____

Temperature at receipt: 20/20.3 °C
 Checked by: *[Signature]* On Ice? Y N
 Therm. used: *[Signature]*

ADDITIONAL REMARKS:

† GAL cannot accept verbal changes. Please email changes to receiving@greenanalytical.com
 * Chain of Custody must be signed in "Relinquished By:" as an acceptance of services and all applicable changes.

EPA METHOD 300.0: ANIONS

- Fluoride
- Chloride
- Nitrogen, Nitrite (As N)
- Bromide
- Nitrogen, Nitrate (As N)
- Phosphorus, Orthophosphate (As P)
- Sulfate

EPA METHOD 200.7: METALS

- Calcium
- Magnesium
- Potassium
- Sodium

SM2510B: SPECIFIC CONDUCTANCE

- Conductivity

SM4500-H+B / 9040C: PH

- pH

SM2320B: ALKALINITY

- Bicarbonate (As CaCO₃)
- Carbonate (As CaCO₃)
- Total Alkalinity (as CaCO₃)

SM2540C MOD: TOTAL DISSOLVED SOLIDS

- Total Dissolved Solids



Date/Initials of person examining contents: 6.18.25
LPOW

Labeled by initials: _____
(if different than above)

SAMPLE CONDITION RECEIPT FORM

Client Name: Cottonwood

Work Order # 2506-234

Courier: Fed Ex UPS USPS Client Kangaroo Third Party Other

Custody Seals on Box/Cooler Present: Yes No Seals Intact: Yes No GAL Cooler #: _____

Thermometer Used: H2 Samples on ice, cooling process has begun: Yes No

Type of Ice: Wet Blue None Cooler Temp: Observed Temp: 20.1 °C Correction Factor: +2.2 °C Final Temp: 20.3 °C

*Temp should be above freezing 6°C

Compliance: Yes No

Chain of Custody Filled Out:	<input checked="" type="checkbox"/> Yes <input type="checkbox"/> No	1.
COC Signed when Relinquished and Received:	<input checked="" type="checkbox"/> Yes <input type="checkbox"/> No	2.
Sampler Name and Signature on COC: *Required for compliance	<input checked="" type="checkbox"/> Yes <input type="checkbox"/> No	3.
Samples arrived within hold time:	<input checked="" type="checkbox"/> Yes <input type="checkbox"/> No	4.
Correct Containers Used & Intact:	<input checked="" type="checkbox"/> Yes <input type="checkbox"/> No	5.
Short Hold Time Analysis (<72hr):	<input checked="" type="checkbox"/> Yes <input type="checkbox"/> No	6. <u>OP04, MCK, PH</u>
Rush Turn Around Time Requested:	<input type="checkbox"/> Yes <input checked="" type="checkbox"/> No	7.
Sufficient Volume:	<input checked="" type="checkbox"/> Yes <input type="checkbox"/> No	8.
pH's acceptable upon receipt, where applicable: *Not including metals bottles	<input type="checkbox"/> Yes <input type="checkbox"/> No <input checked="" type="checkbox"/> N/A	9.
Dissolved Testing Needed:	<input type="checkbox"/> Yes <input checked="" type="checkbox"/> No	10.
Field Filtered: <input type="checkbox"/> Yes <input type="checkbox"/> No		
Sample Labels match COC: -Includes Date/Time/ID	<input checked="" type="checkbox"/> Yes <input type="checkbox"/> No	11.
Matrix:	<input checked="" type="checkbox"/> WP <input type="checkbox"/> SL <input type="checkbox"/> OT	
Trip Blank Present:	<input type="checkbox"/> Yes <input type="checkbox"/> No <input type="checkbox"/> N/A	12.
Trip Blank Custody Seals Present:	<input type="checkbox"/> Yes <input type="checkbox"/> No <input type="checkbox"/> N/A	
VOA's meet headspace requirement (<6mm bubbles)	<input type="checkbox"/> Yes <input type="checkbox"/> No <input checked="" type="checkbox"/> N/A	
Non-Conformance(s):	<input type="checkbox"/> Yes <input checked="" type="checkbox"/> No	13.

Client Notification/Resolution:

Person Contacted: _____

Date/Time: _____

Comments/Resolution: _____



75 Suttle Street
Durango, CO 81303
970.247.4220 Phone
jeremy.allen@greenanalytical.com

23 December 2025

Kyle Siesser
Cottonwood Consulting
PO Box 1653
Durango, CO 81302
RE: GCU #170

Enclosed are the results of analyses for samples received by the laboratory on 12/09/25 16:05. The data to follow was performed, in whole or in part, by Green Analytical Laboratories. Any data that was performed by a subcontract laboratory is included within the GAL report, or with an additional report attached.

If you need any further assistance, please feel free to contact me.

Sincerely,

A handwritten signature in blue ink that reads "Jeremy D. Allen". The signature is written in a cursive style and is enclosed in a light blue rectangular box.

Reporting Station For Jeremy D Allen
Laboratory Director

All accredited analytes contained in this report are denoted by an asterisk (*). For a complete list of accredited analytes please do not hesitate to contact us via any of the contact information contained in this report. All of our certifications can be viewed at <http://greenanalytical.com/certifications/>

Green Analytical Laboratories is NELAP accredited through the Texas Commission on Environmental Quality. Accreditation applies to drinking water and non-potable water matrices for trace metals and a variety of inorganic parameters. Green Analytical Laboratories is also accredited through the Colorado Department of Public Health and Environment and EPA region 8 for trace metals, Cyanide, Fluoride, Nitrate, and Nitrite in drinking water. TNI Certificate Number: TX-C25-00079

Our affiliate laboratory, Cardinal Laboratories, is also NELAP accredited through the Texas Commission on Environmental Quality for a variety of organic constituents in drinking water, non-potable water and solid matrices. Cardinal is also accredited for regulated VOCs, TTHM, and HAA-5 in drinking water through the Colorado Department of Public Health and Environment and EPA region 8. TNI Certificate Number: TX-C25-00101

Table of Contents

Samples in Report	3
Sample Results	4
2512108-01: MW #2A	4
2512108-02: MW #3A	5
2512108-03: MW #4A	6
2512108-04: MW #5	7
2512108-05: MW #6	8
2512108-06: MW #7	9
2512108-07: MW #8	10
2512108-08: MW #9	11
Quality Assurance Results	12
Notes and Definitions	15
Chain of Custody & Attachments	16



Cottonwood Consulting	Project: GCU #170	
PO Box 1653	Project Name / Number: GCU #170	Reported:
Durango CO, 81302	Project Manager: Kyle Siesser	12/23/25 12:37

ANALYTICAL REPORT FOR SAMPLES

Sample ID	Laboratory ID	Matrix	Date Sampled	Date Received	Notes
MW #2A	2512108-01	Water	12/09/25 11:15	12/09/25 16:05	
MW #3A	2512108-02	Water	12/09/25 11:25	12/09/25 16:05	
MW #4A	2512108-03	Water	12/09/25 11:30	12/09/25 16:05	
MW #5	2512108-04	Water	12/09/25 12:10	12/09/25 16:05	
MW #6	2512108-05	Water	12/09/25 11:35	12/09/25 16:05	
MW #7	2512108-06	Water	12/09/25 11:10	12/09/25 16:05	
MW #8	2512108-07	Water	12/09/25 12:15	12/09/25 16:05	
MW #9	2512108-08	Water	12/09/25 11:45	12/09/25 16:05	

Green Analytical Laboratories

Reporting Station For Jeremy D Allen, Laboratory Director

The results in this report apply to the samples analyzed in accordance with the chain of custody document. This analytical report must be reproduced in its entirety. In no event shall Green Analytical Laboratories be liable for incidental or consequential damages. GALs liability, and clients exclusive remedy for any claim arising, shall be limited to the amount paid by client for analyses. All claims, including those for negligence and any other cause whatsoever, shall be deemed waived unless made in writing and received within thirty days after completion of the applicable service.



Cottonwood Consulting
 PO Box 1653
 Durango CO, 81302

Project: GCU #170
 Project Name / Number: GCU #170
 Project Manager: Kyle Siesser

Reported:
 12/23/25 12:37

MW #2A

2512108-01 (Ground Water)

Sampled Date: 12/09/25 11:15

Sampled By: Emma Millar/Kelsey O'Brien

Analyte	Result	RL	MDL	Units	Dilution	Analyzed	Method	Notes	Analyst
---------	--------	----	-----	-------	----------	----------	--------	-------	---------

General Chemistry

Alkalinity, Total as CaCO3*	560	10.0	5.55	mg/L	5	12/15/25 10:00	2320 B		HIC
Alkalinity, Hydroxide as CaCO3*	<10.0	10.0	5.55	mg/L	5	12/15/25 10:00	2320 B		HIC
Alkalinity, Carbonate as CaCO3*	<10.0	10.0	5.55	mg/L	5	12/15/25 10:00	2320 B		HIC
Alkalinity, Bicarbonate as CaCO3*	560	10.0	5.55	mg/L	5	12/15/25 10:00	2320 B		HIC
Bromide	0.438	0.200	0.0548	mg/L	2	12/17/25 15:47	EPA 300.0		AWG
Chloride*	28.1	2.00	0.994	mg/L	2	12/17/25 15:47	EPA 300.0		AWG
Conductivity*	2290	1.00		umho/cm@25 C	1	12/10/25 16:15	2510 B		SCE
Fluoride*	0.716	0.200	0.0673	mg/L	2	12/17/25 15:47	EPA 300.0		AWG
Nitrate as N*	1.00	0.040	0.012	mg/L	2	12/10/25 13:28	EPA 300.0		AWG
Nitrate+Nitrite as N by IC	1.00	0.0800	0.0237	mg/L	2	12/10/25 13:28	EPA 300.0		AWG
Nitrite as N*	<0.040	0.040	0.012	mg/L	2	12/10/25 13:28	EPA 300.0		AWG
Ortho-Phosphate as P*	<0.100	0.100	0.0483	mg/L	2	12/10/25 13:28	EPA 300.0		AWG
pH*	7.04			pH Units	1	12/10/25 16:15	EPA 150.1/9040C	H	SCE
pH Temperature, degrees C	21.2			pH Units	1	12/10/25 16:15	EPA 150.1/9040C	H	SCE
Sulfate*	851	10.0	5.63	mg/L	10	12/18/25 10:55	EPA 300.0		AWG
Total Dissolved Solids*	1790	10.0		mg/L	1	12/11/25 16:43	EPA 160.1/SM 2540C		SCE

Total Recoverable Metals by ICP (E200.7)

Calcium*	266	1.20	0.316	mg/L	2	12/15/25 11:36	EPA 200.7	B3	AWG
Magnesium*	49.4	0.200	0.126	mg/L	2	12/15/25 11:36	EPA 200.7		AWG
Potassium*	2.08	2.00	0.424	mg/L	2	12/15/25 11:36	EPA 200.7		AWG
Sodium*	240	2.00	0.812	mg/L	2	12/15/25 11:36	EPA 200.7		AWG

Green Analytical Laboratories

Reporting Station For Jeremy D Allen, Laboratory Director

The results in this report apply to the samples analyzed in accordance with the chain of custody document. This analytical report must be reproduced in its entirety. In no event shall Green Analytical Laboratories be liable for incidental or consequential damages. GALs liability, and clients exclusive remedy for any claim arising, shall be limited to the amount paid by client for analyses. All claims, including those for negligence and any other cause whatsoever, shall be deemed waived unless made in writing and received within thirty days after completion of the applicable service.



Cottonwood Consulting
 PO Box 1653
 Durango CO, 81302

Project: GCU #170
 Project Name / Number: GCU #170
 Project Manager: Kyle Siesser

Reported:
 12/23/25 12:37

MW #3A

2512108-02 (Ground Water)

Sampled Date: 12/09/25 11:25

Sampled By: Emma Millar/Kelsey O'Brien

Analyte	Result	RL	MDL	Units	Dilution	Analyzed	Method	Notes	Analyst
---------	--------	----	-----	-------	----------	----------	--------	-------	---------

General Chemistry

Alkalinity, Total as CaCO3*	460	10.0	5.55	mg/L	5	12/15/25 10:00	2320 B		HIC
Alkalinity, Hydroxide as CaCO3*	<10.0	10.0	5.55	mg/L	5	12/15/25 10:00	2320 B		HIC
Alkalinity, Carbonate as CaCO3*	<10.0	10.0	5.55	mg/L	5	12/15/25 10:00	2320 B		HIC
Alkalinity, Bicarbonate as CaCO3*	460	10.0	5.55	mg/L	5	12/15/25 10:00	2320 B		HIC
Bromide	0.884	0.200	0.0548	mg/L	2	12/17/25 17:00	EPA 300.0		AWG
Chloride*	53.3	2.00	0.994	mg/L	2	12/17/25 17:00	EPA 300.0		AWG
Conductivity*	2910	1.00		umho/cm@25 C	1	12/10/25 16:15	2510 B		SCE
Fluoride*	1.06	0.200	0.0673	mg/L	2	12/17/25 17:00	EPA 300.0		AWG
Nitrate as N*	5.73	0.200	0.059	mg/L	10	12/10/25 18:07	EPA 300.0		AWG
Nitrate+Nitrite as N by IC	5.72	0.400	0.119	mg/L	10	12/10/25 18:07	EPA 300.0		AWG
Nitrite as N*	<0.200	0.200	0.060	mg/L	10	12/10/25 18:07	EPA 300.0	D2	AWG
Ortho-Phosphate as P*	<0.100	0.100	0.0483	mg/L	2	12/10/25 13:50	EPA 300.0		AWG
pH*	7.30			pH Units	1	12/10/25 16:15	EPA 150.1/9040C	H	SCE
pH Temperature, degrees C	20.7			pH Units	1	12/10/25 16:15	EPA 150.1/9040C	H	SCE
Sulfate*	1470	10.0	5.63	mg/L	10	12/18/25 11:19	EPA 300.0		AWG
Total Dissolved Solids*	2680	10.0		mg/L	1	12/11/25 16:47	EPA 160.1/SM 2540C		SCE

Total Recoverable Metals by ICP (E200.7)

Calcium*	390	1.20	0.316	mg/L	2	12/15/25 11:40	EPA 200.7	B3	AWG
Magnesium*	66.6	0.200	0.126	mg/L	2	12/15/25 11:40	EPA 200.7		AWG
Potassium*	3.90	2.00	0.424	mg/L	2	12/15/25 11:40	EPA 200.7		AWG
Sodium*	224	2.00	0.812	mg/L	2	12/15/25 11:40	EPA 200.7		AWG

Green Analytical Laboratories

Reporting Station For Jeremy D Allen, Laboratory Director

The results in this report apply to the samples analyzed in accordance with the chain of custody document. This analytical report must be reproduced in its entirety. In no event shall Green Analytical Laboratories be liable for incidental or consequential damages. GALs liability, and clients exclusive remedy for any claim arising, shall be limited to the amount paid by client for analyses. All claims, including those for negligence and any other cause whatsoever, shall be deemed waived unless made in writing and received within thirty days after completion of the applicable service.



Cottonwood Consulting
 PO Box 1653
 Durango CO, 81302

Project: GCU #170
 Project Name / Number: GCU #170
 Project Manager: Kyle Siesser

Reported:
 12/23/25 12:37

MW #4A

2512108-03 (Ground Water)

Sampled Date: 12/09/25 11:30

Sampled By: Emma Millar/Kelsey O'Brien

Analyte	Result	RL	MDL	Units	Dilution	Analyzed	Method	Notes	Analyst
---------	--------	----	-----	-------	----------	----------	--------	-------	---------

General Chemistry

Alkalinity, Total as CaCO3*	690	10.0	5.55	mg/L	5	12/15/25 10:00	2320 B		HIC
Alkalinity, Hydroxide as CaCO3*	<10.0	10.0	5.55	mg/L	5	12/15/25 10:00	2320 B		HIC
Alkalinity, Carbonate as CaCO3*	<10.0	10.0	5.55	mg/L	5	12/15/25 10:00	2320 B		HIC
Alkalinity, Bicarbonate as CaCO3*	690	10.0	5.55	mg/L	5	12/15/25 10:00	2320 B		HIC
Bromide	5.14	0.500	0.137	mg/L	5	12/17/25 17:25	EPA 300.0		AWG
Chloride*	403	5.00	2.49	mg/L	5	12/17/25 17:25	EPA 300.0		AWG
Conductivity*	6860	1.00		umho/cm@25 C	1	12/10/25 16:15	2510 B		SCE
Fluoride*	2.18	0.500	0.168	mg/L	5	12/17/25 17:25	EPA 300.0		AWG
Nitrate as N*	0.251	0.100	0.029	mg/L	5	12/10/25 14:11	EPA 300.0		AWG
Nitrate+Nitrite as N by IC	0.250	0.200	0.0593	mg/L	5	12/10/25 14:11	EPA 300.0		AWG
Nitrite as N*	<0.100	0.100	0.030	mg/L	5	12/10/25 14:11	EPA 300.0		AWG
Ortho-Phosphate as P*	<0.250	0.250	0.121	mg/L	5	12/10/25 14:11	EPA 300.0		AWG
pH*	7.02			pH Units	1	12/10/25 16:15	EPA 150.1/9040C	H	SCE
pH Temperature, degrees C	20.4			pH Units	1	12/10/25 16:15	EPA 150.1/9040C	H	SCE
Sulfate*	2820	50.0	28.1	mg/L	50	12/18/25 14:10	EPA 300.0		AWG
Total Dissolved Solids*	5410	20.0		mg/L	2	12/11/25 16:49	EPA 160.1/SM 2540C		SCE

Total Recoverable Metals by ICP (E200.7)

Calcium*	388	3.01	0.790	mg/L	5	12/15/25 11:44	EPA 200.7	B3	AWG
Magnesium*	221	0.500	0.316	mg/L	5	12/15/25 11:44	EPA 200.7		AWG
Potassium*	7.04	5.00	1.06	mg/L	5	12/15/25 11:44	EPA 200.7		AWG
Sodium*	1080	5.00	2.03	mg/L	5	12/15/25 11:44	EPA 200.7		AWG

Green Analytical Laboratories

Reporting Station For Jeremy D Allen, Laboratory Director

The results in this report apply to the samples analyzed in accordance with the chain of custody document. This analytical report must be reproduced in its entirety. In no event shall Green Analytical Laboratories be liable for incidental or consequential damages. GALs liability, and clients exclusive remedy for any claim arising, shall be limited to the amount paid by client for analyses. All claims, including those for negligence and any other cause whatsoever, shall be deemed waived unless made in writing and received within thirty days after completion of the applicable service.



Cottonwood Consulting
 PO Box 1653
 Durango CO, 81302

Project: GCU #170
 Project Name / Number: GCU #170
 Project Manager: Kyle Siesser

Reported:
 12/23/25 12:37

MW #5

2512108-04 (Ground Water)

Sampled Date: 12/09/25 12:10

Sampled By: Emma Millar/Kelsey O'Brien

Analyte	Result	RL	MDL	Units	Dilution	Analyzed	Method	Notes	Analyst
---------	--------	----	-----	-------	----------	----------	--------	-------	---------

General Chemistry

Alkalinity, Total as CaCO3*	390	10.0	5.55	mg/L	5	12/15/25 10:00	2320 B		HIC
Alkalinity, Hydroxide as CaCO3*	<10.0	10.0	5.55	mg/L	5	12/15/25 10:00	2320 B		HIC
Alkalinity, Carbonate as CaCO3*	<10.0	10.0	5.55	mg/L	5	12/15/25 10:00	2320 B		HIC
Alkalinity, Bicarbonate as CaCO3*	390	10.0	5.55	mg/L	5	12/15/25 10:00	2320 B		HIC
Bromide	0.870	0.500	0.137	mg/L	5	12/17/25 17:49	EPA 300.0		AWG
Chloride*	54.3	5.00	2.49	mg/L	5	12/17/25 17:49	EPA 300.0		AWG
Conductivity*	3400	1.00		umho/cm@25 C	1	12/10/25 16:15	2510 B		SCE
Fluoride*	0.605	0.500	0.168	mg/L	5	12/17/25 17:49	EPA 300.0		AWG
Nitrate as N*	5.69	0.200	0.059	mg/L	10	12/10/25 18:28	EPA 300.0		AWG
Nitrate+Nitrite as N by IC	5.69	0.400	0.119	mg/L	10	12/10/25 18:28	EPA 300.0		AWG
Nitrite as N*	<0.200	0.200	0.060	mg/L	10	12/10/25 18:28	EPA 300.0	D2	AWG
Ortho-Phosphate as P*	<0.100	0.100	0.0483	mg/L	2	12/10/25 15:37	EPA 300.0		AWG
pH*	7.08			pH Units	1	12/10/25 16:15	EPA 150.1/9040C	H	SCE
pH Temperature, degrees C	19.8			pH Units	1	12/10/25 16:15	EPA 150.1/9040C	H	SCE
Sulfate*	1630	50.0	28.1	mg/L	50	12/18/25 14:34	EPA 300.0		AWG
Total Dissolved Solids*	2900	10.0		mg/L	1	12/11/25 16:51	EPA 160.1/SM 2540C		SCE

Total Recoverable Metals by ICP (E200.7)

Calcium*	482	1.80	0.474	mg/L	3	12/15/25 11:48	EPA 200.7	B3	AWG
Magnesium*	66.5	0.300	0.189	mg/L	3	12/15/25 11:48	EPA 200.7		AWG
Potassium*	13.8	3.00	0.636	mg/L	3	12/15/25 11:48	EPA 200.7		AWG
Sodium*	266	3.00	1.22	mg/L	3	12/15/25 11:48	EPA 200.7		AWG

Green Analytical Laboratories

Reporting Station For Jeremy D Allen, Laboratory Director

The results in this report apply to the samples analyzed in accordance with the chain of custody document. This analytical report must be reproduced in its entirety. In no event shall Green Analytical Laboratories be liable for incidental or consequential damages. GALs liability, and clients exclusive remedy for any claim arising, shall be limited to the amount paid by client for analyses. All claims, including those for negligence and any other cause whatsoever, shall be deemed waived unless made in writing and received within thirty days after completion of the applicable service.



Cottonwood Consulting
 PO Box 1653
 Durango CO, 81302

Project: GCU #170
 Project Name / Number: GCU #170
 Project Manager: Kyle Siesser

Reported:
 12/23/25 12:37

MW #6

2512108-05 (Ground Water)

Sampled Date: 12/09/25 11:35

Sampled By: Emma Millar/Kelsey O'Brien

Analyte	Result	RL	MDL	Units	Dilution	Analyzed	Method	Notes	Analyst
---------	--------	----	-----	-------	----------	----------	--------	-------	---------

General Chemistry

Alkalinity, Total as CaCO3*	645	10.0	5.55	mg/L	5	12/15/25 12:00	2320 B		HIC
Alkalinity, Hydroxide as CaCO3*	<10.0	10.0	5.55	mg/L	5	12/15/25 12:00	2320 B		HIC
Alkalinity, Carbonate as CaCO3*	<10.0	10.0	5.55	mg/L	5	12/15/25 12:00	2320 B		HIC
Alkalinity, Bicarbonate as CaCO3*	645	10.0	5.55	mg/L	5	12/15/25 12:00	2320 B		HIC
Bromide	<0.100	0.100	0.0274	mg/L	1	12/17/25 18:14	EPA 300.0		AWG
Chloride*	6.38	1.00	0.497	mg/L	1	12/17/25 18:14	EPA 300.0		AWG
Conductivity*	1170	1.00		umho/cm@25 C	1	12/10/25 16:15	2510 B		SCE
Fluoride*	0.469	0.100	0.0336	mg/L	1	12/17/25 18:14	EPA 300.0		AWG
Nitrate as N*	0.089	0.020	0.006	mg/L	1	12/10/25 15:58	EPA 300.0		AWG
Nitrate+Nitrite as N by IC	0.0893	0.0400	0.0119	mg/L	1	12/10/25 15:58	EPA 300.0		AWG
Nitrite as N*	<0.020	0.020	0.006	mg/L	1	12/10/25 15:58	EPA 300.0		AWG
Ortho-Phosphate as P*	<0.0500	0.0500	0.0242	mg/L	1	12/10/25 15:58	EPA 300.0		AWG
pH*	7.10			pH Units	1	12/10/25 16:15	EPA 150.1/9040C	H	SCE
pH Temperature, degrees C	20.1			pH Units	1	12/10/25 16:15	EPA 150.1/9040C	H	SCE
Sulfate*	95.6	1.00	0.563	mg/L	1	12/17/25 18:14	EPA 300.0		AWG
Total Dissolved Solids*	700	10.0		mg/L	1	12/11/25 16:53	EPA 160.1/SM 2540C		SCE

Total Recoverable Metals by ICP (E200.7)

Calcium*	180	0.601	0.158	mg/L	1	12/15/25 11:52	EPA 200.7	B3	AWG
Magnesium*	19.7	0.100	0.063	mg/L	1	12/15/25 11:52	EPA 200.7		AWG
Potassium*	1.53	1.00	0.212	mg/L	1	12/15/25 11:52	EPA 200.7		AWG
Sodium*	42.2	1.00	0.406	mg/L	1	12/15/25 11:52	EPA 200.7		AWG

Green Analytical Laboratories

Reporting Station For Jeremy D Allen, Laboratory Director

The results in this report apply to the samples analyzed in accordance with the chain of custody document. This analytical report must be reproduced in its entirety. In no event shall Green Analytical Laboratories be liable for incidental or consequential damages. GALs liability, and clients exclusive remedy for any claim arising, shall be limited to the amount paid by client for analyses. All claims, including those for negligence and any other cause whatsoever, shall be deemed waived unless made in writing and received within thirty days after completion of the applicable service.



Cottonwood Consulting
 PO Box 1653
 Durango CO, 81302

Project: GCU #170
 Project Name / Number: GCU #170
 Project Manager: Kyle Siesser

Reported:
 12/23/25 12:37

MW #7

2512108-06 (Ground Water)

Sampled Date: 12/09/25 11:10

Sampled By: Emma Millar/Kelsey O'Brien

Analyte	Result	RL	MDL	Units	Dilution	Analyzed	Method	Notes	Analyst
---------	--------	----	-----	-------	----------	----------	--------	-------	---------

General Chemistry

Alkalinity, Total as CaCO3*	360	10.0	5.55	mg/L	5	12/15/25 12:00	2320 B		HIC
Alkalinity, Hydroxide as CaCO3*	<10.0	10.0	5.55	mg/L	5	12/15/25 12:00	2320 B		HIC
Alkalinity, Carbonate as CaCO3*	<10.0	10.0	5.55	mg/L	5	12/15/25 12:00	2320 B		HIC
Alkalinity, Bicarbonate as CaCO3*	360	10.0	5.55	mg/L	5	12/15/25 12:00	2320 B		HIC
Bromide	1.06	0.200	0.0548	mg/L	2	12/17/25 18:38	EPA 300.0		AWG
Chloride*	62.6	2.00	0.994	mg/L	2	12/17/25 18:38	EPA 300.0		AWG
Conductivity*	2070	1.00		umho/cm@25 C	1	12/10/25 16:15	2510 B		SCE
Fluoride*	0.780	0.200	0.0673	mg/L	2	12/17/25 18:38	EPA 300.0		AWG
Nitrate as N*	10.4	0.200	0.059	mg/L	10	12/11/25 00:55	EPA 300.0		AWG
Nitrate+Nitrite as N by IC	10.4	0.400	0.119	mg/L	10	12/11/25 00:55	EPA 300.0		AWG
Nitrite as N*	<0.200	0.200	0.060	mg/L	10	12/11/25 00:55	EPA 300.0	D2	AWG
Ortho-Phosphate as P*	<0.100	0.100	0.0483	mg/L	2	12/10/25 16:20	EPA 300.0		AWG
pH*	7.24			pH Units	1	12/10/25 16:15	EPA 150.1/9040C	H	SCE
pH Temperature, degrees C	22.1			pH Units	1	12/10/25 16:15	EPA 150.1/9040C	H	SCE
Sulfate*	1040	10.0	5.63	mg/L	10	12/18/25 14:59	EPA 300.0		AWG
Total Dissolved Solids*	2010	10.0		mg/L	1	12/11/25 16:55	EPA 160.1/SM 2540C		SCE

Total Recoverable Metals by ICP (E200.7)

Calcium*	312	1.20	0.316	mg/L	2	12/15/25 11:54	EPA 200.7	B3	AWG
Magnesium*	35.6	0.200	0.126	mg/L	2	12/15/25 11:54	EPA 200.7		AWG
Potassium*	2.86	2.00	0.424	mg/L	2	12/15/25 11:54	EPA 200.7		AWG
Sodium*	100	2.00	0.812	mg/L	2	12/15/25 11:54	EPA 200.7		AWG

Green Analytical Laboratories

Reporting Station For Jeremy D Allen, Laboratory Director

The results in this report apply to the samples analyzed in accordance with the chain of custody document. This analytical report must be reproduced in its entirety. In no event shall Green Analytical Laboratories be liable for incidental or consequential damages. GALs liability, and clients exclusive remedy for any claim arising, shall be limited to the amount paid by client for analyses. All claims, including those for negligence and any other cause whatsoever, shall be deemed waived unless made in writing and received within thirty days after completion of the applicable service.



Cottonwood Consulting
 PO Box 1653
 Durango CO, 81302

Project: GCU #170
 Project Name / Number: GCU #170
 Project Manager: Kyle Siesser

Reported:
 12/23/25 12:37

MW #8

2512108-07 (Ground Water)
Sampled Date: 12/09/25 12:15

Sampled By: Emma Millar/Kelsey O'Brien

Analyte	Result	RL	MDL	Units	Dilution	Analyzed	Method	Notes	Analyst
---------	--------	----	-----	-------	----------	----------	--------	-------	---------

General Chemistry

Alkalinity, Total as CaCO3*	230	10.0	5.55	mg/L	5	12/15/25 12:00	2320 B		HIC
Alkalinity, Hydroxide as CaCO3*	<10.0	10.0	5.55	mg/L	5	12/15/25 12:00	2320 B		HIC
Alkalinity, Carbonate as CaCO3*	<10.0	10.0	5.55	mg/L	5	12/15/25 12:00	2320 B		HIC
Alkalinity, Bicarbonate as CaCO3*	230	10.0	5.55	mg/L	5	12/15/25 12:00	2320 B		HIC
Bromide	<0.200	0.200	0.0548	mg/L	2	12/17/25 19:02	EPA 300.0		AWG
Chloride*	7.76	2.00	0.994	mg/L	2	12/17/25 19:02	EPA 300.0		AWG
Conductivity*	2020	1.00		umho/cm@25 C	1	12/10/25 16:15	2510 B		SCE
Fluoride*	0.616	0.200	0.0673	mg/L	2	12/17/25 19:02	EPA 300.0		AWG
Nitrate as N*	9.56	0.300	0.088	mg/L	15	12/11/25 01:16	EPA 300.0		AWG
Nitrate+Nitrite as N by IC	9.56	0.600	0.178	mg/L	15	12/11/25 01:16	EPA 300.0		AWG
Nitrite as N*	<0.300	0.300	0.090	mg/L	15	12/11/25 01:16	EPA 300.0	D2	AWG
Ortho-Phosphate as P*	<0.0500	0.0500	0.0242	mg/L	1	12/10/25 16:41	EPA 300.0		AWG
pH*	7.17			pH Units	1	12/10/25 16:15	EPA 150.1/9040C	H	SCE
pH Temperature, degrees C	20.4			pH Units	1	12/10/25 16:15	EPA 150.1/9040C	H	SCE
Sulfate*	995	10.0	5.63	mg/L	10	12/18/25 15:23	EPA 300.0		AWG
Total Dissolved Solids*	1700	10.0		mg/L	1	12/11/25 16:57	EPA 160.1/SM 2540C		SCE

Total Recoverable Metals by ICP (E200.7)

Calcium*	146	1.20	0.316	mg/L	2	12/15/25 11:58	EPA 200.7	B3	AWG
Magnesium*	16.3	0.200	0.126	mg/L	2	12/15/25 11:58	EPA 200.7		AWG
Potassium*	2.42	2.00	0.424	mg/L	2	12/15/25 11:58	EPA 200.7		AWG
Sodium*	61.2	2.00	0.812	mg/L	2	12/15/25 11:58	EPA 200.7		AWG

Green Analytical Laboratories

Reporting Station For Jeremy D Allen, Laboratory Director

The results in this report apply to the samples analyzed in accordance with the chain of custody document. This analytical report must be reproduced in its entirety. In no event shall Green Analytical Laboratories be liable for incidental or consequential damages. GALs liability, and clients exclusive remedy for any claim arising, shall be limited to the amount paid by client for analyses. All claims, including those for negligence and any other cause whatsoever, shall be deemed waived unless made in writing and received within thirty days after completion of the applicable service.



Cottonwood Consulting
 PO Box 1653
 Durango CO, 81302

Project: GCU #170
 Project Name / Number: GCU #170
 Project Manager: Kyle Siesser

Reported:
 12/23/25 12:37

MW #9

2512108-08 (Ground Water)

Sampled Date: 12/09/25 11:45

Sampled By: Emma Millar/Kelsey O'Brien

Analyte	Result	RL	MDL	Units	Dilution	Analyzed	Method	Notes	Analyst
---------	--------	----	-----	-------	----------	----------	--------	-------	---------

General Chemistry

Alkalinity, Total as CaCO3*	440	10.0	5.55	mg/L	5	12/15/25 12:00	2320 B		HIC
Alkalinity, Hydroxide as CaCO3*	<10.0	10.0	5.55	mg/L	5	12/15/25 12:00	2320 B		HIC
Alkalinity, Carbonate as CaCO3*	<10.0	10.0	5.55	mg/L	5	12/15/25 12:00	2320 B		HIC
Alkalinity, Bicarbonate as CaCO3*	440	10.0	5.55	mg/L	5	12/15/25 12:00	2320 B		HIC
Bromide	<0.100	0.100	0.0274	mg/L	1	12/17/25 19:27	EPA 300.0		AWG
Chloride*	14.5	1.00	0.497	mg/L	1	12/17/25 19:27	EPA 300.0		AWG
Conductivity*	1090	1.00		umho/cm@25 C	1	12/10/25 16:15	2510 B		SCE
Fluoride*	0.485	0.100	0.0336	mg/L	1	12/17/25 19:27	EPA 300.0		AWG
Nitrate as N*	3.04	0.100	0.029	mg/L	5	12/11/25 11:21	EPA 300.0		AWG
Nitrate+Nitrite as N by IC	3.04	0.120	0.0353	mg/L	5	12/11/25 11:21	EPA 300.0		AWG
Nitrite as N*	<0.020	0.020	0.006	mg/L	1	12/10/25 17:03	EPA 300.0		AWG
Ortho-Phosphate as P*	<0.0500	0.0500	0.0242	mg/L	1	12/10/25 17:03	EPA 300.0		AWG
pH*	7.25			pH Units	1	12/10/25 16:15	EPA 150.1/9040C	H	SCE
pH Temperature, degrees C	20.7			pH Units	1	12/10/25 16:15	EPA 150.1/9040C	H	SCE
Sulfate*	182	1.00	0.563	mg/L	1	12/17/25 19:27	EPA 300.0		AWG
Total Dissolved Solids*	695	10.0		mg/L	1	12/11/25 16:59	EPA 160.1/SM 2540C		SCE

Total Recoverable Metals by ICP (E200.7)

Calcium*	359	0.601	0.158	mg/L	1	12/15/25 11:59	EPA 200.7	B3	AWG
Magnesium*	29.4	0.100	0.063	mg/L	1	12/15/25 12:00	EPA 200.7		AWG
Potassium*	4.05	1.00	0.212	mg/L	1	12/15/25 11:59	EPA 200.7		AWG
Sodium*	73.9	1.00	0.406	mg/L	1	12/15/25 11:59	EPA 200.7		AWG

Green Analytical Laboratories

Reporting Station For Jeremy D Allen, Laboratory Director

The results in this report apply to the samples analyzed in accordance with the chain of custody document. This analytical report must be reproduced in its entirety. In no event shall Green Analytical Laboratories be liable for incidental or consequential damages. GALs liability, and clients exclusive remedy for any claim arising, shall be limited to the amount paid by client for analyses. All claims, including those for negligence and any other cause whatsoever, shall be deemed waived unless made in writing and received within thirty days after completion of the applicable service.



Cottonwood Consulting
 PO Box 1653
 Durango CO, 81302

Project: GCU #170
 Project Name / Number: GCU #170
 Project Manager: Kyle Siesser

Reported:
 12/23/25 12:37

General Chemistry - Quality Control

Analyte	Result	Reporting Limit	Units	Spike Level	Source Result	%REC	%REC Limits	RPD	RPD Limit	Notes
---------	--------	-----------------	-------	-------------	---------------	------	-------------	-----	-----------	-------

Batch B253926 - General Prep - Wet Chem

Duplicate (B253926-DUP1)		Source: 2512088-01		Prepared & Analyzed: 12/10/25						
pH	7.53		pH Units		7.48			0.666	20	
pH Temperature, degrees C	22.2		pH Units		21.4			3.67	200	

Reference (B253926-SRM1)		Prepared & Analyzed: 12/10/25								
pH	7.05		pH Units	7.00		101	97.5-102.5			

Batch B253941 - IC- Ion Chromatograph

Blank (B253941-BLK1)		Prepared & Analyzed: 12/10/25								
Nitrate as N	ND	0.020	mg/L							
Nitrite as N	ND	0.020	mg/L							
Ortho-Phosphate as P	ND	0.0500	mg/L							

LCS (B253941-BS1)		Prepared & Analyzed: 12/10/25								
Nitrate as N	1.06	0.020	mg/L	1.00		106	90-110			
Nitrite as N	0.905	0.020	mg/L	1.00		90.5	90-110			
Ortho-Phosphate as P	0.953	0.0500	mg/L	1.00		95.3	90-110			

LCS Dup (B253941-BSD1)		Prepared & Analyzed: 12/10/25								
Nitrate as N	1.05	0.020	mg/L	1.00		105	90-110	1.17	20	
Nitrite as N	0.941	0.020	mg/L	1.00		94.1	90-110	3.82	20	
Ortho-Phosphate as P	0.982	0.0500	mg/L	1.00		98.2	90-110	3.09	20	

Batch B253943 - General Prep - Wet Chem

Duplicate (B253943-DUP1)		Source: 2512108-01		Prepared & Analyzed: 12/10/25						
Conductivity	2340	1.00	umho/cm@2 5C		2290			2.25	20	

Reference (B253943-SRM1)		Prepared & Analyzed: 12/10/25								
Conductivity	997	1.00	umho/cm@2 5C	1000		99.7	90-110			

Batch B253960 - General Prep - Wet Chem

Blank (B253960-BLK1)		Prepared & Analyzed: 12/11/25								
Total Dissolved Solids	ND	10.0	mg/L							

Duplicate (B253960-DUP1)		Source: 2512108-01		Prepared & Analyzed: 12/11/25						
Total Dissolved Solids	1800	10.0	mg/L		1790			0.558	20	

Green Analytical Laboratories

The results in this report apply to the samples analyzed in accordance with the chain of custody document. This analytical report must be reproduced in its entirety. In no event shall Green Analytical Laboratories be liable for incidental or consequential damages. GALs liability, and clients exclusive remedy for any claim arising, shall be limited to the amount paid by client for analyses. All claims, including those for negligence and any other cause whatsoever, shall be deemed waived unless made in writing and received within thirty days after completion of the applicable service.

Reporting Station For Jeremy D Allen, Laboratory Director



Cottonwood Consulting
 PO Box 1653
 Durango CO, 81302

Project: GCU #170
 Project Name / Number: GCU #170
 Project Manager: Kyle Siesser

Reported:
 12/23/25 12:37

**General Chemistry - Quality Control
 (Continued)**

Analyte	Result	Reporting Limit	Units	Spike Level	Source Result	%REC	%REC Limits	RPD	RPD Limit	Notes
---------	--------	-----------------	-------	-------------	---------------	------	-------------	-----	-----------	-------

Batch B253960 - General Prep - Wet Chem (Continued)

Reference (B253960-SRM1)

Prepared & Analyzed: 12/11/25

Total Dissolved Solids	400	10.0	mg/L	400	100	85-115				
------------------------	-----	------	------	-----	-----	--------	--	--	--	--

Batch B253998 - General Prep - Wet Chem

Blank (B253998-BLK1)

Prepared & Analyzed: 12/15/25

Alkalinity, Bicarbonate as CaCO3	ND	10.0	mg/L							
Alkalinity, Carbonate as CaCO3	ND	10.0	mg/L							
Alkalinity, Hydroxide as CaCO3	ND	10.0	mg/L							
Alkalinity, Total as CaCO3	ND	10.0	mg/L							

LCS (B253998-BS1)

Prepared & Analyzed: 12/15/25

Alkalinity, Total as CaCO3	105	10.0	mg/L	100	105	85-115				
----------------------------	-----	------	------	-----	-----	--------	--	--	--	--

LCS Dup (B253998-BSD1)

Prepared & Analyzed: 12/15/25

Alkalinity, Total as CaCO3	108	10.0	mg/L	100	108	85-115	2.82	20		
----------------------------	-----	------	------	-----	-----	--------	------	----	--	--

Reference (B253998-SRM1)

Prepared & Analyzed: 12/15/25

Alkalinity, Total as CaCO3	105	10.0	mg/L	100	105	85-115				
----------------------------	-----	------	------	-----	-----	--------	--	--	--	--

Batch B254000 - General Prep - Wet Chem

Blank (B254000-BLK1)

Prepared & Analyzed: 12/15/25

Alkalinity, Bicarbonate as CaCO3	ND	10.0	mg/L							
Alkalinity, Carbonate as CaCO3	ND	10.0	mg/L							
Alkalinity, Hydroxide as CaCO3	ND	10.0	mg/L							
Alkalinity, Total as CaCO3	ND	10.0	mg/L							

LCS (B254000-BS1)

Prepared & Analyzed: 12/15/25

Alkalinity, Total as CaCO3	112	10.0	mg/L	100	112	85-115				
----------------------------	-----	------	------	-----	-----	--------	--	--	--	--

LCS Dup (B254000-BSD1)

Prepared & Analyzed: 12/15/25

Alkalinity, Total as CaCO3	109	10.0	mg/L	100	109	85-115	2.71	20		
----------------------------	-----	------	------	-----	-----	--------	------	----	--	--

Reference (B254000-SRM1)

Prepared & Analyzed: 12/15/25

Alkalinity, Total as CaCO3	111	10.0	mg/L	100	111	85-115				
----------------------------	-----	------	------	-----	-----	--------	--	--	--	--

Batch B254006 - IC- Ion Chromatograph

Blank (B254006-BLK1)

Prepared: 12/15/25 Analyzed: 12/17/25

Bromide	ND	0.100	mg/L							
Chloride	ND	1.00	mg/L							
Fluoride	ND	0.100	mg/L							
Sulfate	ND	1.00	mg/L							

Green Analytical Laboratories

The results in this report apply to the samples analyzed in accordance with the chain of custody document. This analytical report must be reproduced in its entirety. In no event shall Green Analytical Laboratories be liable for incidental or consequential damages. GALs liability, and clients exclusive remedy for any claim arising, shall be limited to the amount paid by client for analyses. All claims, including those for negligence and any other cause whatsoever, shall be deemed waived unless made in writing and received within thirty days after completion of the applicable service.

Reporting Station For Jeremy D Allen, Laboratory Director



Cottonwood Consulting
 PO Box 1653
 Durango CO, 81302

Project: GCU #170
 Project Name / Number: GCU #170
 Project Manager: Kyle Siesser

Reported:
 12/23/25 12:37

**General Chemistry - Quality Control
 (Continued)**

Analyte	Result	Reporting Limit	Units	Spike Level	Source Result	%REC	%REC Limits	RPD	RPD Limit	Notes
---------	--------	-----------------	-------	-------------	---------------	------	-------------	-----	-----------	-------

Batch B254006 - IC- Ion Chromatograph (Continued)

LCS (B254006-BS1)

Prepared: 12/15/25 Analyzed: 12/17/25

Bromide	2.45	0.100	mg/L	2.50		97.8	90-110			
Chloride	24.3	1.00	mg/L	25.0		97.1	90-110			
Fluoride	2.58	0.100	mg/L	2.50		103	90-110			
Sulfate	23.8	1.00	mg/L	25.0		95.3	90-110			

LCS Dup (B254006-BSD1)

Prepared: 12/15/25 Analyzed: 12/17/25

Bromide	2.51	0.100	mg/L	2.50		100	90-110	2.66	20	
Chloride	24.9	1.00	mg/L	25.0		99.6	90-110	2.53	20	
Fluoride	2.69	0.100	mg/L	2.50		108	90-110	4.33	20	
Sulfate	24.6	1.00	mg/L	25.0		98.5	90-110	3.24	20	

Total Recoverable Metals by ICP (E200.7) - Quality Control

Analyte	Result	Reporting Limit	Units	Spike Level	Source Result	%REC	%REC Limits	RPD	RPD Limit	Notes
---------	--------	-----------------	-------	-------------	---------------	------	-------------	-----	-----------	-------

Batch B253956 - Total Recoverable by ICP

Blank (B253956-BLK1)

Prepared: 12/11/25 Analyzed: 12/15/25

Calcium	0.300	0.200	mg/L							B3
Magnesium	ND	0.100	mg/L							
Potassium	ND	1.00	mg/L							
Sodium	ND	1.00	mg/L							

LCS (B253956-BS1)

Prepared: 12/11/25 Analyzed: 12/15/25

Calcium	1.99	0.200	mg/L	2.00		99.6	85-115			
Magnesium	10.2	0.100	mg/L	10.0		102	85-115			
Potassium	4.22	1.00	mg/L	4.00		105	85-115			
Sodium	1.69	1.00	mg/L	1.62		105	85-115			

LCS Dup (B253956-BSD1)

Prepared: 12/11/25 Analyzed: 12/15/25

Calcium	2.00	0.200	mg/L	2.00		100	85-115	0.383	20	
Magnesium	10.3	0.100	mg/L	10.0		103	85-115	0.785	20	
Potassium	4.13	1.00	mg/L	4.00		103	85-115	2.00	20	
Sodium	1.71	1.00	mg/L	1.62		106	85-115	1.06	20	

Green Analytical Laboratories

The results in this report apply to the samples analyzed in accordance with the chain of custody document. This analytical report must be reproduced in its entirety. In no event shall Green Analytical Laboratories be liable for incidental or consequential damages. GALs liability, and clients exclusive remedy for any claim arising, shall be limited to the amount paid by client for analyses. All claims, including those for negligence and any other cause whatsoever, shall be deemed waived unless made in writing and received within thirty days after completion of the applicable service.

Reporting Station For Jeremy D Allen, Laboratory Director



Cottonwood Consulting	Project: GCU #170	
PO Box 1653	Project Name / Number: GCU #170	Reported:
Durango CO, 81302	Project Manager: Kyle Siesser	12/23/25 12:37

Notes and Definitions

- M3 Matrix spike recovery did not meet acceptance criteria. Accuracy of the spike is reduced since the analyte concentration in the sample is more than four times the spike level.
- M2 Matrix spike recovery was below laboratory acceptance criteria. Recovery possibly affected by a matrix interference in the sample. The method blank spike recovery was acceptable.
- M1 Matrix spike recovery was above laboratory acceptance criteria.
- H This analysis is typically performed in the field and has a method-defined holding time of 15 minutes. This sample has been qualified to indicate the analysis was performed in the laboratory outside of the 15 minute time frame.
- D2 The sample was diluted due to matrix interference.
- B3 Target analyte detected in method blank or continuing calibration blank. Reporting limit elevated to account for blank result.
- DET Analyte DETECTED
- ND Analyte NOT DETECTED at or above the reporting limit
- NR Not Reported
- dry Sample results reported on a dry weight basis
*Results reported on as received basis unless designated as dry.
- RPD Relative Percent Difference
- LCS Laboratory Control Sample (Blank Spike)
- RL Report Limit
- MDL Method Detection Limit

Green Analytical Laboratories

Reporting Station For Jeremy D Allen, Laboratory Director

The results in this report apply to the samples analyzed in accordance with the chain of custody document. This analytical report must be reproduced in its entirety. In no event shall Green Analytical Laboratories be liable for incidental or consequential damages. GALs liability, and clients exclusive remedy for any claim arising, shall be limited to the amount paid by client for analyses. All claims, including those for negligence and any other cause whatsoever, shall be deemed waived unless made in writing and received within thirty days after completion of the applicable service.

**GCU #170 ANALYTES
(ATTACH TO COC)**

EPA METHOD 300.0: ANIONS

- Fluoride
- Chloride
- Nitrogen, Nitrite (As N)
- Bromide
- Nitrogen, Nitrate (As N)
- Phosphorus, Orthophosphate (As P)
- Sulfate

EPA METHOD 200.7: METALS

- Calcium
- Magnesium
- Potassium
- Sodium

SM2510B: SPECIFIC CONDUCTANCE

- Conductivity

SM4500-H+B / 9040C: PH

- pH

SM2320B: ALKALINITY

- Bicarbonate (As CaCO₃)
- Carbonate (As CaCO₃)
- Total Alkalinity (as CaCO₃)

SM2540C MOD: TOTAL DISSOLVED SOLIDS

- Total Dissolved Solids



Date/Initials of person examining contents: 12-9-25
12-10-25 *MLP*

Labeled by initials: _____
 (if different than above)

SAMPLE CONDITION RECEIPT FORM

Client Name: Cottonwood Consulting

Work Order # 2512-108

Courier: Fed Ex UPS USPS Client Kangaroo Third Party Other

Custody Seals on Box/Cooler Present: Yes No Seals Intact: Yes No GAL Cooler #: _____

Thermometer Used: #2 Samples on ice, cooling process has begun: Yes No

Type of Ice: Wet Blue None Cooler Temp: Observed Temp: 13.0 °C Correction Factor: 0 °C Final Temp: 13.0 °C

Temp: _____ °C *Temp should be above freezing 6°C, if multiple readings are taken the lowest temp is the final temp recorded.
Temp: _____ °C
Temp: _____ °C

Compliance: Yes No

Chain of Custody Filled Out:	<input checked="" type="checkbox"/> Yes <input type="checkbox"/> No	1.
COC Signed when Relinquished and Received:	<input checked="" type="checkbox"/> Yes <input type="checkbox"/> No	2.
Sampler Name and Signature on COC: *Required for compliance	<input checked="" type="checkbox"/> Yes <input type="checkbox"/> No	3.
Samples arrived within hold time: (Excluding pH)	<input checked="" type="checkbox"/> Yes <input type="checkbox"/> No	4.
Correct Containers Used & Intact:	<input checked="" type="checkbox"/> Yes <input type="checkbox"/> No	5.
Short Hold Time Analysis (<72hr): (Excluding pH)	<input checked="" type="checkbox"/> Yes <input type="checkbox"/> No	6. <u>Nox. 0904</u>
Rush Turn Around Time Requested:	<input type="checkbox"/> Yes <input checked="" type="checkbox"/> No	7.
Sufficient Volume:	<input checked="" type="checkbox"/> Yes <input type="checkbox"/> No	8.
pH's acceptable upon receipt, where applicable: *Not including metals bottles	<input type="checkbox"/> Yes <input type="checkbox"/> No <input checked="" type="checkbox"/> N/A	9.
Dissolved Testing Needed: Field Filtered: <input type="checkbox"/> Yes <input type="checkbox"/> No	<input type="checkbox"/> Yes <input checked="" type="checkbox"/> No	10.
Sample Labels match COC: -Includes Date/Time/ID Matrix: <u>WT</u> SL OT	<input checked="" type="checkbox"/> Yes <input type="checkbox"/> No	11.
Trip Blank Present:	<input type="checkbox"/> Yes <input type="checkbox"/> No <input checked="" type="checkbox"/> N/A	12.
Trip Blank Custody Seals Present:	<input type="checkbox"/> Yes <input type="checkbox"/> No <input checked="" type="checkbox"/> N/A	
VOA's meet headspace requirement (<6mm bubbles)	<input type="checkbox"/> Yes <input type="checkbox"/> No <input checked="" type="checkbox"/> N/A	
Non-Conformance(s):	<input type="checkbox"/> Yes <input checked="" type="checkbox"/> No	13.

Client Notification/Resolution:

Person Contacted: _____

Date/Time: _____

Comments/Resolution: _____

Sante Fe Main Office
Phone: (505) 476-3441

General Information
Phone: (505) 629-6116

Online Phone Directory
<https://www.emnrd.nm.gov/ocd/contact-us>

State of New Mexico
Energy, Minerals and Natural Resources
Oil Conservation Division
1220 S. St Francis Dr.
Santa Fe, NM 87505

CONDITIONS

Action 550373

CONDITIONS

Operator: SIMCOE LLC 1199 Main Ave., Suite 101 Durango, CO 81301	OGRID: 329736
	Action Number: 550373
	Action Type: [UF-GWA] Ground Water Abatement (GROUND WATER ABATEMENT)

CONDITIONS

Created By	Condition	Condition Date
amaxwell	Report accepted for record.	6/18/2026