

1625 N. French Dr., Hobbs, NM 88240  
District II  
1301 W. Grand Avenue, Artesia, NM 88210  
District III  
1000 Rio Brazos Road, Aztec, NM 87410  
District IV  
1220 S. St. Francis Dr., Santa Fe, NM 87505

State of New Mexico  
Energy Minerals and Natural Resources

Form C-101  
May 27, 2004

Oil Conservation Division  
1220 South St. Francis Dr.  
Santa Fe, NM 87505

Submit to appropriate District Office

☐ AMENDED REPORT

APPLICATION FOR PERMIT TO DRILL, RE-ENTER, DEEPEN, PLUGBACK, OR ADD A ZONE

<sup>1</sup> Operator Name and Address XTO ENERGY INC 2700 FARMINGTON AVE. BLDG K, STE 1 FARMINGTON, NM 87401		<sup>2</sup> OGRID Number 167067
<sup>3</sup> Property Code 34234		<sup>3</sup> API Number 30 - 001 - 20012
<sup>3</sup> Property Name WESTLAND "15"		<sup>4</sup> Well No. #1
<sup>9</sup> Proposed Pool 1 WILDCAT MORRISON		<sup>10</sup> Proposed Pool 2

<sup>7</sup> Surface Location

UL or lot no.	Section	Township	Range	Lot Idn	Feet from the	North/South line	Feet from the	East/West line	County
P	15	10N	01W		800'	SOUTH	800'	EAST	BERNALILLO

<sup>8</sup> Proposed Bottom Hole Location If Different From Surface

UL or lot no.	Section	Township	Range	Lot Idn	Feet from the	North/South line	Feet from the	East/West line	County

Additional Well Information

<sup>11</sup> Work Type Code N	<sup>12</sup> Well Type Code G	<sup>13</sup> Cable/Rotary R	<sup>14</sup> Lease Type Code P (FEE)	<sup>15</sup> Ground Level Elevation 5,367' GROUND LEVEL
<sup>16</sup> Multiple NO	<sup>17</sup> Proposed Depth 5,850'	<sup>18</sup> Formation MORRISON	<sup>19</sup> Contractor UNITED DRILLING	<sup>20</sup> Spud Date WITHIN 30 DAYS
Depth to Groundwater GREATER THAN 100'		Distance from nearest fresh water well OVER 1 MILE		Distance from nearest surface water OVER 3 MILES
Pit: Liner: Synthetic <input checked="" type="checkbox"/> 12_mils thick Clay <input type="checkbox"/> Pit Volume: _____ bbls Drilling Method: ROTARY DRILLING WITH MUD				
Closed-Loop System <input type="checkbox"/> Fresh Water: <input checked="" type="checkbox"/> Brine <input type="checkbox"/> Diesel/Oil-based <input type="checkbox"/> Gas/Air <input type="checkbox"/>				

<sup>21</sup> Proposed Casing and Cement Program

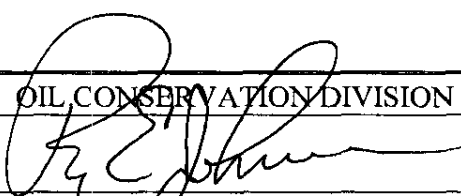
Hole Size	Casing Size	Casing weight/foot	Setting Depth	Sacks of Cement	Estimated TOC
12-1/4"	9-5/8"	36.0#/FT	360' KB	200 SX	SURFACE
7-7/8"	5-1/2"	17.0#/FT	5,850' KB	800 SX	SURFACE

<sup>22</sup> Describe the proposed program. If this application is to DEEPEN or PLUG BACK, give the data on the present productive zone and proposed new productive zone. Describe the blowout prevention program, if any. Use additional sheets if necessary.

Drill to 360' KB. Run new 9-5/8" casing. Cement casing w/±200 sx Type III cement w/2% CC & 1/4#/sx cello (mixed at 14.5 ppg & 1.41 cuft/sx). Continue to pump cement to surface until cement is circ to surface. Disp cement with fresh water. NU BOPE. Mix mud. Drill ahead with 7-7/8" open hole.

Drill to 5,850' KB (TD). Log well. Run new 5-1/2", 17.0#, J-55, LT&C casing to bottom. Cement casing with (lead) ±650 sx Premium Lite cement with 6% gel, dispersant, fluid loss & 1/4#/sx celloflake (mixed at 12.5 ppg & 2.07 cuft/sx) followed by (tail) 150 sx Class "H" cement with dispersant, fluid loss and bonding additives (mixed at 15.6 ppg & 1.18 cuft/sx). Attempt to circ cement to surface.

See enclosed drawing for BOP stack configuration.

<sup>23</sup> I hereby certify that the information given above is true and complete to the best of my knowledge and belief. I further certify that the drilling pit will be constructed according to NMOCD guidelines <input checked="" type="checkbox"/> , a general permit <input type="checkbox"/> , or an (attached) alternative OCD-approved plan <input type="checkbox"/> .		OIL CONSERVATION DIVISION	
Printed name: Jeffrey W. Patton		Approved by: 	
Title: Drilling Engineer		Title: DISTRICT SUPERVISOR	
E-mail Address: Jeff_Patton@xtoenergy.com		Approval Date: 8/25/04 Expiration Date: 8/25/05	
Date: 8/23/04	Phone: (505) 324-1090	Conditions of Approval Attached <input type="checkbox"/> COLLECT AND SACK SAMPLES FOR NEW MEXICO BUREAU OF MINES, SOFORD AT AT LEAST TEN FOOT INTERVALS	

DISTRICT I  
1625 N. French Dr., Hobbs, N.M. 88240

DISTRICT II  
1301 W. Grand Ave., Artesia, N.M. 88210

DISTRICT III  
1000 Rio Brazos Rd., Aztec, N.M. 87410

DISTRICT IV  
1220 South St. Francis Dr., Santa Fe, NM 87505

State of New Mexico  
Energy, Minerals & Natural Resources Department

OIL CONSERVATION DIVISION  
1220 South St. Francis Dr.  
Santa Fe, NM 87505

Revised June 10, 2003  
Submit to Appropriate District Office  
State Lease - 4 Copies  
Fee Lease - 3 Copies

☐ AMENDED REPORT

### WELL LOCATION AND ACREAGE DEDICATION PLAT

1 API Number		2 Pool Code		3 Pool Name <i>WILDCAT MORRISON</i>	
4 Property Code		5 Property Name WESTLAND 15			6 Well Number 1
7 OGRID No. <i>167067</i>		8 Operator Name XTO ENERGY INC.			9 Elevation 5367

#### 10 Surface Location

UL or lot no.	Section	Township	Range	Lot Idn	Feet from the	North/South line	Feet from the	East/West line	County
P	15	10-N	1-W		800	SOUTH	800	EAST	BERNALILLO

#### 11 Bottom Hole Location If Different From Surface

UL or lot no.	Section	Township	Range	Lot Idn	Feet from the	North/South line	Feet from the	East/West line	County
12 Dedicated Acres <i>160</i>					13 Joint or Infill		14 Consolidation Code		15 Order No.

NO ALLOWABLE WILL BE ASSIGNED TO THIS COMPLETION UNTIL ALL INTERESTS HAVE BEEN CONSOLIDATED  
OR A NON-STANDARD UNIT HAS BEEN APPROVED BY THE DIVISION

16				PROJ'D. SEC. CORNER	
				N 00-04-16 E 5278.7' (C)	
15				LAT: 36°05'23.7" N. (NAD 27) LONG: 106°55'24.5" W. (NAD 27)	
				PROJ'D. SEC. CORNER	
PROJ'D. SEC. CORNER				N 89-39-00 W 5285.54' (C)	
				800'	
				800'	

#### 17 OPERATOR CERTIFICATION

I hereby certify that the information contained herein is true and complete to the best of my knowledge and belief.

Signature *Jeffrey W. Patton*  
Printed Name JEFFREY W. PATTON  
Title DRILLING ENGINEER  
Date 8-24-04

#### 18 SURVEYOR CERTIFICATION

I hereby certify that the well location shown on this plat was plotted from field notes of actual surveys made by me or under my supervision, and that the same is true and correct to the best of my belief.

Date of Survey 8-24-04  
Signature and Seal of Professional Surveyor: *John A. Vukovich*  
14831  
14831  
Certificate Number


LAT. = 35°05'23.7" N.  
LONG. = 106°55'24.5" W  
NAD 27

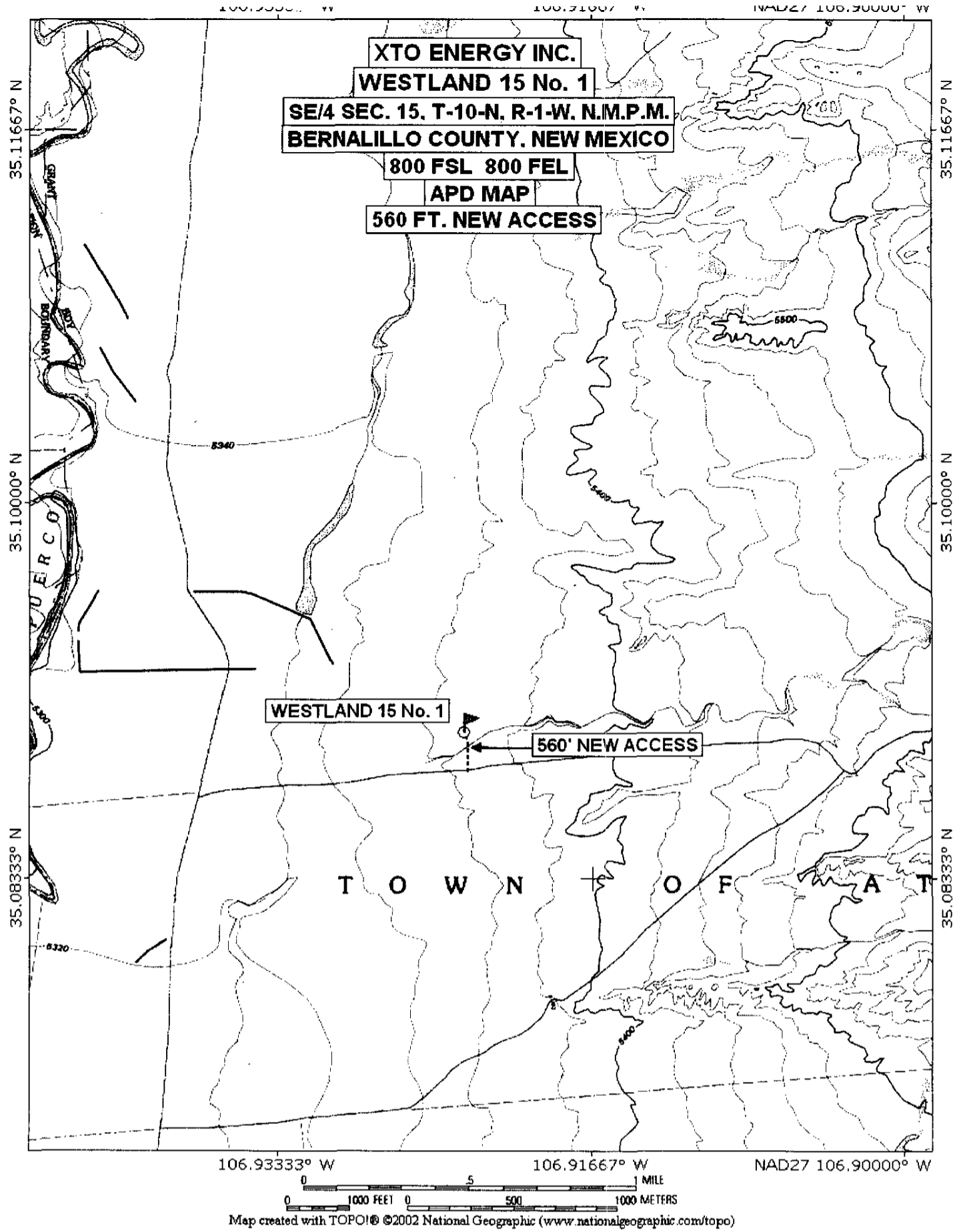


NOTE: DAGGETT ENTERPRISES, INC. IS NOT LIABLE FOR UNDERGROUND UTILITIES OR PIPELINES. NEW MEXICO ONE CALL TO BE NOTIFIED 48 HOURS PRIOR TO EXCAVATION OR CONSTRUCTION.

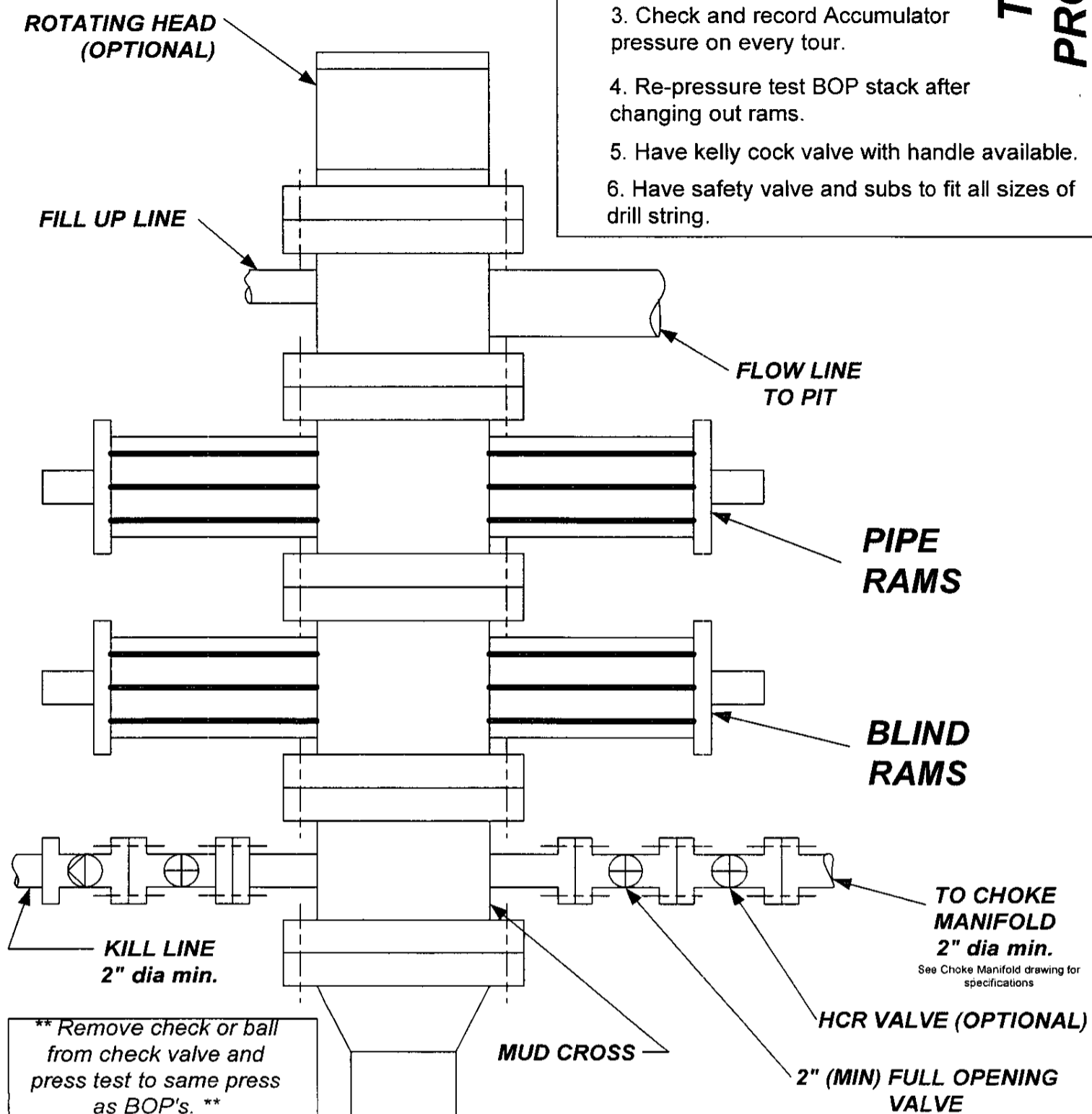
ELEV.	C-C'	C/L
5380		
5370		
5360		
5350		

NOTE: CONTRACTOR SHOULD CALL ONE-CALL FOR LOCATION OF ANY MARKED OR UNMARKED BURIED PIPELINES OR CABLES ON WELL PAD AND OR ACCESS ROAD AT LEAST TWO (2) WORKING DAYS PRIOR TO CONSTRUCTION.

REVISION	DATE	REVISED BY
		
<p><b>Daggett Enterprises, Inc.</b>  <b>Surveying and Oil Field Services</b>  P. O. Box 15088 • Farmington, NM 87401  Phone (505) 328-1772 • Fax (505) 328-6019  NEW MEXICO L.S. No. 14831</p>		
DRAWN BY: B.L. CHECKED BY:	DATE: 07/08/04 SCALE: 3/8"=1'-0"	



# **BOP SCHEMATIC FOR DRILLING OPERATIONS CLASS 1 (2M) NORMAL PRESSURE**



1. Test BOP after installation:  
Pressure test BOP to 200-300 psig (low pressure) for 5 min.  
Test BOP to Working Press or to 70% internal yield of surf csg (10 min).
2. Test operation of (both) rams on every trip.
3. Check and record Accumulator pressure on every tour.
4. Re-pressure test BOP stack after changing out rams.
5. Have kelly cock valve with handle available.
6. Have safety valve and subs to fit all sizes of drill string.

## **TESTING PROCEDURE**

**CHOKE MANIFOLD  
SCHEMATIC FOR DRILLING  
OPERATIONS  
CLASS 1 (2M) NORMAL  
PRESSURE**

1. Stake all lines from choke manifold to pit.
2. Pressure test choke manifold after installation.
3. Pressure test manifold at the same time with the BOP Stack. Test manifold to the same test pressures.

**TESTING  
PROCEDURE**

