

District I

1625 N. French Dr., Hobbs, NM 88240

District II

1301 W. Grand Avenue, Artesia, NM 88210

District III

1000 Rio Brazos Road, Aztec, NM 87410

District IV

1220 S. St. Francis Dr., Santa Fe, NM 87505

State of New Mexico
Energy Minerals and Natural Resources

Oil Conservation Division

1220 South St. Francis Dr.

Santa Fe, NM 87505

Form C-101

Revised June 10, 2003

Submit to appropriate District Office

State Lease - 6 Copies

Fee Lease - 5 Copies

☐ AMENDED REPORT

APPLICATION FOR PERMIT TO DRILL, RE-ENTER, DEEPEN, PLUGBACK, OR ADD A ZONE

| | | |
|---------------------------------------------------------------------------------------------------------|--------------------------------------------------------|-----------------------------------------|
| ¹ Operator Name and Address El Paso Energy Raton, L.L.C. PO Box 190 Raton, NM 87740 | | ² OGRID Number 180514 |
| | | ³ API Number 30-007-20566 |
| ³ Property Code 25179 | ⁵ Property Name Vermejo Park Ranch (VPR) | ⁶ Well No. VPR D 194 |

⁷ Surface Location

| UL or lot no. | Section | Township | Range | Lot Idn | Feet from the | North/South line | Feet from the | East/West line | County |
|---------------|---------|----------|-------|---------|---------------|------------------|---------------|----------------|--------|
| C | 24 | 31N | 17E | C | 1176 | FNL | 1624 | FWL | Colfax |

⁸ Proposed Bottom Hole Location If Different From Surface

| UL or lot no. | Section | Township | Range | Lot Idn | Feet from the | North/South line | Feet from the | East/West line | County |
|---------------|---------|----------|-------|---------|---------------|------------------|---------------|----------------|--------|
| | | | | | | | | | |

⁹ Proposed Pool 1

Castle Rock Park - Vermejo

¹⁰ Proposed Pool 2

| | | | | |
|-----------------------------------|----------------------------------------|------------------------------------------|------------------------------------|------------------------------------------------|
| ¹¹ Work Type Code N | ¹² Well Type Code G | ¹³ Cable/Rotary Rotary/Air | ¹⁴ Lease Type Code P | ¹⁵ Ground Level Elevation 8,200' |
| ¹⁶ Multiple Yes | ¹⁷ Proposed Depth 1,700' | ¹⁸ Formation Vermejo | ¹⁹ Contractor Pense | ²⁰ Spud Date February 1, 2005 |

²¹ Proposed Casing and Cement Program

| Hole Size | Casing Size | Casing weight/foot | Setting Depth | Sacks of Cement | Estimated TOC |
|-----------|-------------|--------------------|---------------|-----------------|---------------|
| 11' | 8 5/8" | 24# | 330' | 100 sk | Surface |
| 7 7/8" | 5 1/2" | 17# | 1,700' | 230 sks | Surface |
| | | | | | |
| | | | | | |

²² Describe the proposed program. If this application is to DEEPEN or PLUG BACK, give the data on the present productive zone and proposed new productive zone.

Describe the blowout prevention program, if any. Use additional sheets if necessary.

1. Drill 11" hole to +/- 330' with air.
2. Set 8 5/8" surface casing and cement to surface with 100 sks of cement.
3. Drill 7 7/8" hole 1,700' with air. Run open hole logs.
4. Set 5 1/2" production casing to TD and cement to surface. Cement volumes calculated from open hole logs. Run Cement Bond Log.
5. Perforate and stimulate the Vermejo and/or Raton Coals. Clean out well bore and run production equipment.

²³ I hereby certify that the information given above is true and complete to the best of my knowledge and belief.

Signature:

Printed name: Donald R. Lankford

Title: Production Engineer

E-mail Address:

Date: 12/06/05

Phone: (505) 445-6721

OIL CONSERVATION DIVISION

Approved by:

Title: DISTRICT SUPERVISOR

Approval Date: 12/15/04

Expiration Date: 12/15/05

Conditions of Approval:

Attached ☐

District I
1625 N. French Dr., Hobbs, NM 88240
District II
1301 W. Grand Avenue, Artesia, NM 88210
District III
1000 Rio Brazos Rd., Aztec, NM 87410
District IV
1220 S. St. Francis Dr., Santa Fe, NM 87505

State of New Mexico
Energy, Minerals & Natural Resources Department
OIL CONSERVATION DIVISION
1220 South St. Francis Dr.
Santa Fe, NM 87505

Form C-102
Revised August 15, 2000
Submit to Appropriate District Office
State Lease - 4 Copies
Fee Lease - 3 Copies

☐ AMENDED REPORT

WELL LOCATION AND ACREAGE DEDICATION PLAT

| | | | | | |
|-------------------------------------|--|------------------------------------------------------------|--|----------------------------------------------------------|---------------------------------------|
| ¹ API Number | | ² Pool Code 97046 | | ³ Pool Name CASTLE ROCK PARK - VERMEJO GAS | |
| ⁴ Property Code 25179 | | ⁵ Property Name VERMEJO PARK RANCH | | | ⁶ Well Number VPR'D-194 |
| ⁷ OGRID No. 180514 | | ⁸ Operator Name EL PASO ENERGY RATON, L.L.C. | | | ⁹ Elevation 8200' |

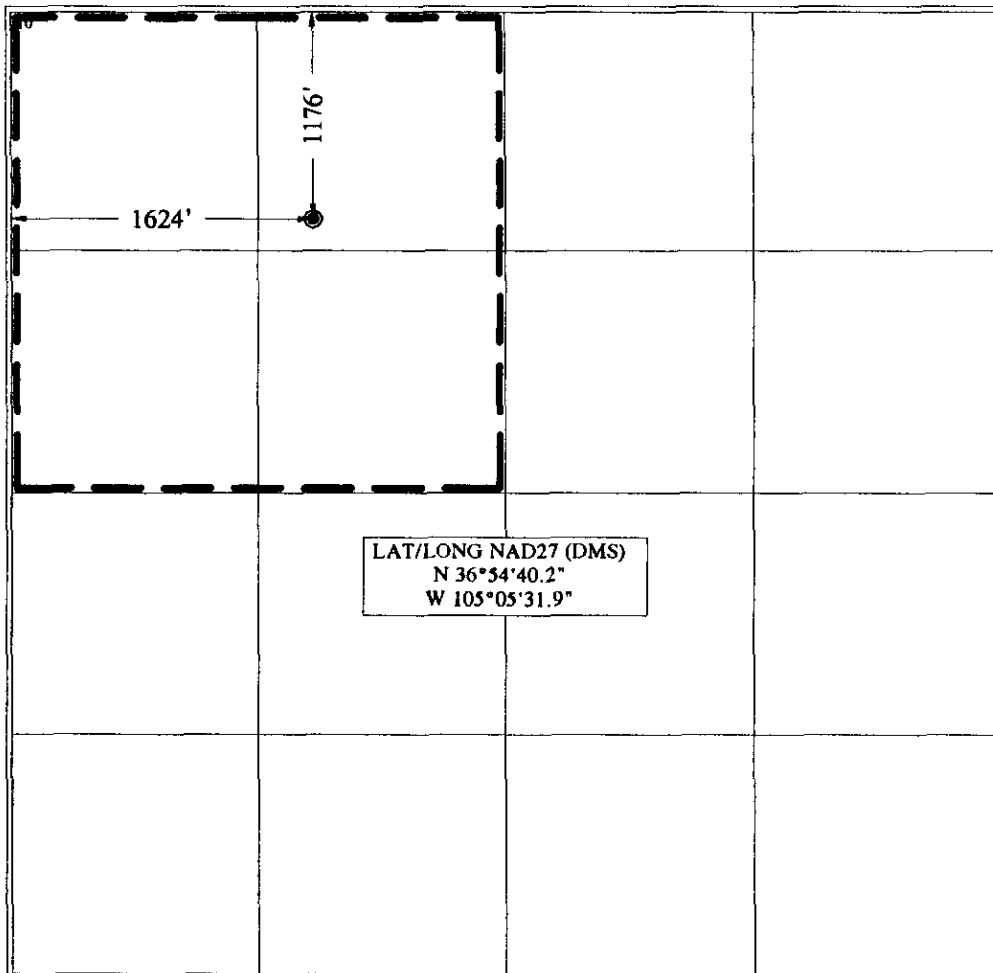
¹⁰ Surface Location

| | | | | | | | | | |
|--------------------|---------------|--------------------|-----------------|--------------|-----------------------|---------------------------|-----------------------|------------------------|------------------|
| UL or lot no. C | Section 24 | Township T 31 N | Range R 17 E | Lot Idn C | Feet from the 1176 | North/South line NORTH | Feet from the 1624 | East/West line WEST | County COLFAX |
|--------------------|---------------|--------------------|-----------------|--------------|-----------------------|---------------------------|-----------------------|------------------------|------------------|

¹¹ Bottom Hole Location If Different From Surface

| | | | | | | | | | |
|-------------------------------|---------|-------------------------------|-------|----------------------------------|---------------|-------------------------|---------------|----------------|--------|
| UL or lot no. | Section | Township | Range | Lot Idn | Feet from the | North/South line | Feet from the | East/West line | County |
| ¹² Dedicated Acres | | ¹³ Joint or Infill | | ¹⁴ Consolidation Code | | ¹⁵ Order No. | | | |

NO ALLOWABLE WILL BE ASSIGNED TO THIS COMPLETION UNTIL ALL INTERESTS HAVE BEEN CONSOLIDATED OR A NON-STANDARD UNIT HAS BEEN APPROVED BY THE DIVISION



¹⁷ OPERATOR CERTIFICATION

I hereby certify that the information contained herein is true and complete to the best of my knowledge and belief.

Signature

DR Lankford

Printed Name DONALD R. LANKFORD

Title SENIOR PETROLIUM ENGINEER

Date

¹⁸ SURVEYOR CERTIFICATION

I hereby certify that the well location shown on this plat was plotted from field notes of actual surveys made by me or under my supervision, and that the same is true and correct to the best of my belief.

December 3, 2004

Date of Survey

Signature and Seal of Professional Surveyor:

[Signature]
Certificate Number NM L.S. NO. 5103