

District I
1625 N. French Dr., Hobbs, NM 88240
District II
1391 W. Grand Avenue, Artesia, NM 88210
District III
1000 Rio Brazos Road, Aztec, NM 87410
District IV
1220 S. St. Francis Dr., Santa Fe, NM 87505

State of New Mexico
Energy Minerals and Natural Resources

Form C-101
May 27, 2004

Oil Conservation Division
1220 South St. Francis Dr.
Santa Fe, NM 87505

Submit to appropriate District Office

☐ AMENDED REPORT

APPLICATION FOR PERMIT TO DRILL, RE-ENTER, DEEPEN, PLUGBACK, OR ADD A ZONE

¹ Operator Name and Address EL PASO ENERGY RATON, L.L.C. PO BOX 190 RATON, NM 87740		² OGRID Number 180514
		³ API Number 30-007-20144
⁴ Property Code 25179	⁵ Property Name VERMEJO PARK RANCH (VPR)	⁶ Well No. VPR D 11
⁹ Proposed Pool 1 VERMEJO		¹⁰ Proposed Pool 2 RATON

Surface Location

UL or lot no. L	Section 5	Township 30N	Range 18E	Lot Idn L	Feet from the 1616	North/South line South	Feet from the 1070	East/West line West	County Colfax
---------------------------	---------------------	------------------------	---------------------	---------------------	------------------------------	----------------------------------	------------------------------	-------------------------------	-------------------------

Proposed Bottom Hole Location If Different From Surface

UL or lot no. L	Section 5	Township 30N	Range 18E	Lot Idn L	Feet from the 2590	North/South line South	Feet from the 50	East/West line West	County Colfax
---------------------------	---------------------	------------------------	---------------------	---------------------	------------------------------	----------------------------------	----------------------------	-------------------------------	-------------------------

Additional Well Information

¹¹ Work Type Code N	¹² Well Type Code G	¹³ Cable/Rotary Rotary/Fluid	¹⁴ Lease Type Code P	¹⁵ Ground Level Elevation 8,566'
¹⁶ Multiple Yes	¹⁷ Proposed Depth 1,737' TVD 3,147' TMD	¹⁸ Formation Lower Vermejo	¹⁹ Contractor Encore	²⁰ Spud Date May 1, 2005
Depth to Groundwater		Distance from nearest fresh water well		Distance from nearest surface water
Pit: Liner: Synthetic <input type="checkbox"/> _____ mils thick Clay <input type="checkbox"/> Pit Volume: _____ bbls Drilling Method: Rotary/Fluid				
Closed-Loop System <input type="checkbox"/> Fresh Water <input checked="" type="checkbox"/> Brine <input type="checkbox"/> Diesel/Oil-based <input type="checkbox"/> Gas/Air <input type="checkbox"/>				

Proposed Casing and Cement Program

Hole Size	Casing Size	Casing weight/foot	Setting Depth	Sacks of Cement	Estimated TOC
11"	8 5/8"	23#	340'	80 sx	SURFACE
7 7/8"	5 1/2"	15.5#	2,089'	200 sx	SURFACE
4 3/4"	3 1/2"	9.3#	1,607'- 3,147' TMD	None	Liner

²² Describe the proposed program. If this application is to DEEPEN or PLUG BACK, give the data on the present productive zone and proposed new productive zone. Describe the blowout prevention program, if any. Use additional sheets if necessary.

1. Set RBP in 5 1/2" casing at 1,650'.
2. Set Whip stock in 5 1/2" casing at 1,607'.
3. Cut window in 5 1/2" casing at 1,601'- 1607'.
4. Drill a 4 3/4" hole in a 130' (42°) Radius curve to a 1,410' horizontal lateral in the lower Vermejo coal (Top 1,737').
5. Run 3 1/2" liner (No Cement) the length of the lateral.
6. Retrieve Whip stock and RBP.
7. Clean out well bore , run production equipment, and put well back on production.

²³ I hereby certify that the information given above is true and complete to the best of my knowledge and belief. I further certify that the drilling pit will be constructed according to NMOCD guidelines ☐, a general permit ☐, or an (attached) alternative OCD-approved plan ☐.

Printed name: **William M. Ordemann**

Title: **Production Engineer**

E-mail Address: **bill.ordemann@elpaso.com**

Date: **02/15/05**

Phone: **(505) 445-6724**

OIL CONSERVATION DIVISION

Approved by:

Title: **DISTRICT SUPERVISOR**

Approval Date: **2/28/05**

Expiration Date: **2/28/06**

Conditions of Approval Attached ☐

District I
1625 N. French Dr., Hobbs, NM 88240
District II
1301 W. Grand Avenue, Artesia, NM 88210
District III
1000 Rio Brazos Rd., Aztec, NM 87410
District IV
1220 S. St. Francis Dr., Santa Fe, NM 87505

State of New Mexico
Energy, Minerals & Natural Resources Department
OIL CONSERVATION DIVISION
1220 South St. Francis Dr.
Santa Fe, NM 87505

Form C-102
Revised August 15, 2000
Submit to Appropriate District Office
State Lease - 4 Copies
Fee Lease - 3 Copies

☐ AMENDED REPORT

WELL LOCATION AND ACREAGE DEDICATION PLAT

¹ API Number		² Pool Code 97046		³ Pool Name CASTLE ROCK PARK - VERMEJO GAS	
⁴ Property Code 25179		⁵ Property Name VERMEJO PARK RANCH			⁶ Well Number VPR'D'-11
⁷ OGRID No. 180514		⁸ Operator Name EL PASO ENERGY RATON, L.L.C.			⁹ Elevation 8566'

¹⁰ Surface Location

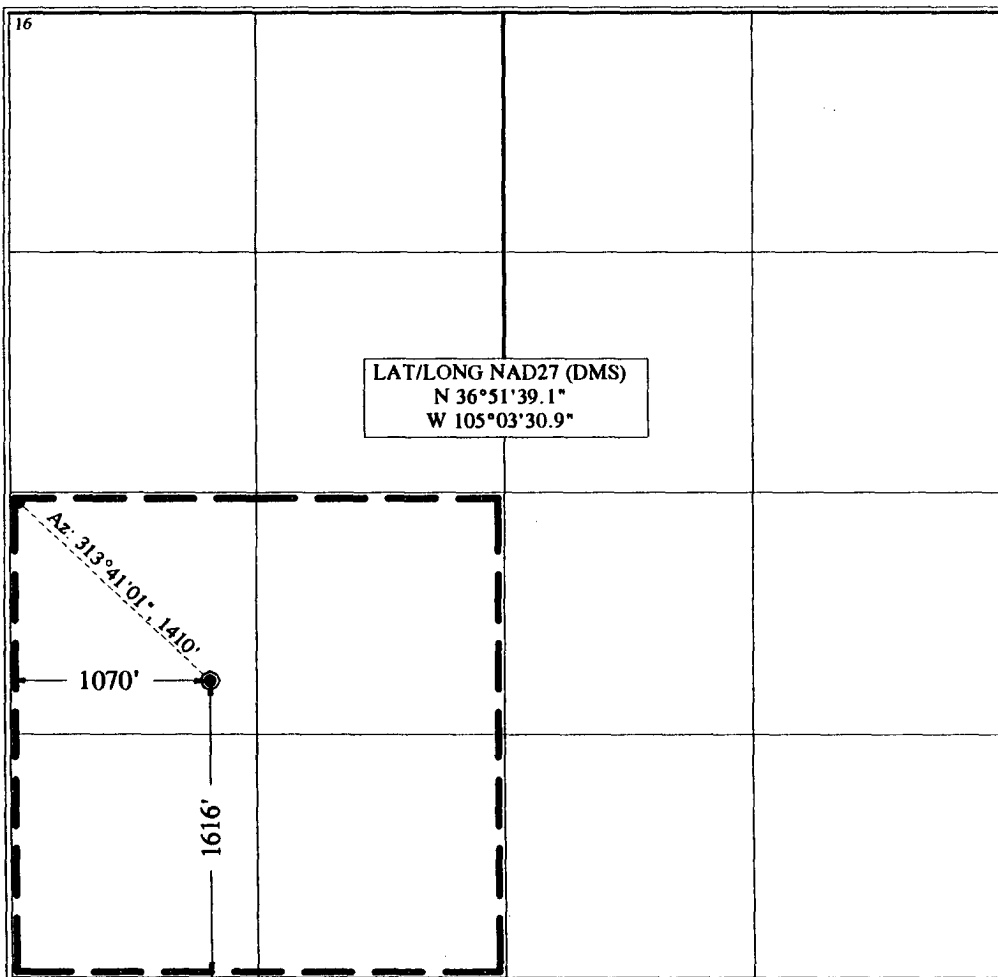
UL or lot no. L	Section 5	Township T 30 N	Range R 18 E	Lot Idn L	Feet from the 1616	North/South line SOUTH	Feet from the 1070	East/West line WEST	County COLFAX
--------------------	--------------	--------------------	-----------------	--------------	-----------------------	---------------------------	-----------------------	------------------------	------------------

¹¹ Bottom Hole Location If Different From Surface

UL or lot no. L	Section 5	Township T 30 N	Range R 18 E	Lot Idn L	Feet from the 2590	North/South line FSL	Feet from the 50	East/West line FWL	County COLFAX
--------------------	--------------	--------------------	-----------------	--------------	-----------------------	-------------------------	---------------------	-----------------------	------------------

¹² Dedicated Acres	¹³ Joint or Infill	¹⁴ Consolidation Code	¹⁵ Order No.
-------------------------------	-------------------------------	----------------------------------	-------------------------

NO ALLOWABLE WILL BE ASSIGNED TO THIS COMPLETION UNTIL ALL INTERESTS HAVE BEEN CONSOLIDATED OR A NON-STANDARD UNIT HAS BEEN APPROVED BY THE DIVISION



¹⁷ OPERATOR CERTIFICATION
I hereby certify that the information contained herein is true and complete to the best of my knowledge and belief.

William M. Ordermann
Signature
WILLIAM M. ORDERMANN
Printed Name
WILLIAM ORDERMANN
Title
PRODUCTION ENGINEER
2-9-05
Date

¹⁸ SURVEYOR CERTIFICATION
I hereby certify that the well location shown on this plat was plotted from field notes of actual surveys made by me or under my supervision, and that the same is true and correct to the best of my belief.

February 4, 2005
Date of Survey
Signature and Seal of Professional Surveyor:
[Signature]
Certificate Number
NM LSN. 5103