

**State of New Mexico**  
**Energy, Minerals and Natural Resources**  
**Oil Conservation Division**  
**1220 S. St Francis Dr.**  
**Santa Fe, NM 87505**

**APPLICATION FOR PERMIT TO DRILL, RE-ENTER, DEEPEN, PLUGBACK, OR ADD A ZONE**

1. Operator Name and Address CHEVRON U S A INC 11111 S. WILCREST HOUSTON , TX 77099		2. OGRID Number 4323
		3. API Number 30-025-38637
4. Property Code 29923	5. Property Name CENTRAL VACUUM UNIT	6. Well No. 455

**7. Surface Location**

UL - Lot	Section	Township	Range	Lot Idn	Feet From	N/S Line	Feet From	E/W Line	County
D	36	17S	34E	D	1310	N	660	W	LEA

**8. Pool Information**

VACUUM;GRAYBURG-SAN ANDRES	62180
----------------------------	-------

**Additional Well Information**

9. Work Type New Well	10. Well Type OIL	11. Cable/Rotary	12. Lease Type State	13. Ground Level Elevation 4008
14. Multiple N	15. Proposed Depth	16. Formation San Andres	17. Contractor	18. Spud Date
Depth to Ground water 120		Distance from nearest fresh water well		Distance to nearest surface water
Pit: Liner: Synthetic <input type="checkbox"/> mls thick      Clay <input type="checkbox"/> Pit Volume:      bbls      Drilling Method: Closed Loop System <input checked="" type="checkbox"/> Fresh Water <input type="checkbox"/> Brine <input type="checkbox"/> Diesel/Oil-based <input type="checkbox"/> Gas/Air <input type="checkbox"/>				

**19. Proposed Casing and Cement Program**

Type	Hole Size	Casing Type	Casing Weight/ft	Setting Depth	Sacks of Cement	Estimated TOC
Surf	14.75	11.75	42	450	385	
Int1	11	8.625	24	3200	1210	
Prod	7.785	5.5	15.5	5200	935	

**Casing/Cement Program: Additional Comments**

SURF:H-40,ST&C,SINGLE SYSTEM:385SX,14.8PPG,Y-1.34,CLC,0.1PPS POLY, 2%CACL, INTER:K-55,ST&C,DV@1600,STG 1:LEAD:445SX,13.5PPG,Y-1.72,CLC,4%BENT,0.2%ANTIFOAMER, TAIL:200SX,14.8PPG,Y-1.36,CLC,5%SALT,0.1PPS POLY STG 2:LEAD:270SX,13.5PPG,Y-1.73,CLC,4%BENT,1%CACL, TAIL:295SX,14.8PPG,Y-1.33,CLC,1%CACL PROD:15.5PPF,K-55,LT&C,&17PPF,K-55,LT&C,LEAD:290SX,12.4PPG,Y-2.15, 35-65POZ,CLH,5%SALT,6%BENT,0.1PPS POLY,0.2% ANTIFOAMER, TAIL:645SX, 14.2PPG,Y-1.36,50:50POZ,CLH,5%SALT,2%BENT,0.1PPS POLY,0.3%UNIFLAC, 0.2% ANTIFOAMER

**Proposed Blowout Prevention Program**

Type	Working Pressure	Test Pressure	Manufacturer
Annular	3000	2500	
Blind	3000	2500	
Pipe	3000	2500	

I hereby certify that the information given above is true and complete to the best of my knowledge and belief. <b>I further certify that the drilling pit will be constructed according to NMOCB guidelines</b> <input type="checkbox"/> , <b>a general permit</b> <input type="checkbox"/> , <b>or an (attached) alternative OCB-approved plan</b> <input type="checkbox"/> .	<b>OIL CONSERVATION DIVISION</b>	
Printed Name: Electronically filed by Denise Pinkerton	Approved By: Paul Kautz	
Title: Regulatory Specialist	Title: Geologist	
Email Address: leakejd@chevron.com	Approved Date: 12/12/2007	Expiration Date: 12/12/2008
Date: 12/12/2007	Phone: 432-687-7375	Conditions of Approval Attached

DISTRICT II  
1301 W. Grand Ave., Artesia, NM 88210

DISTRICT III  
1000 Rio Pecos Rd., Aztec, NM 87410

DISTRICT IV  
1220 St. Francis Dr., Santa Fe, NM 87505

OIL CONSERVATION DIVISION  
1220 South St. Francis Drive  
Santa Fe, NM 87505

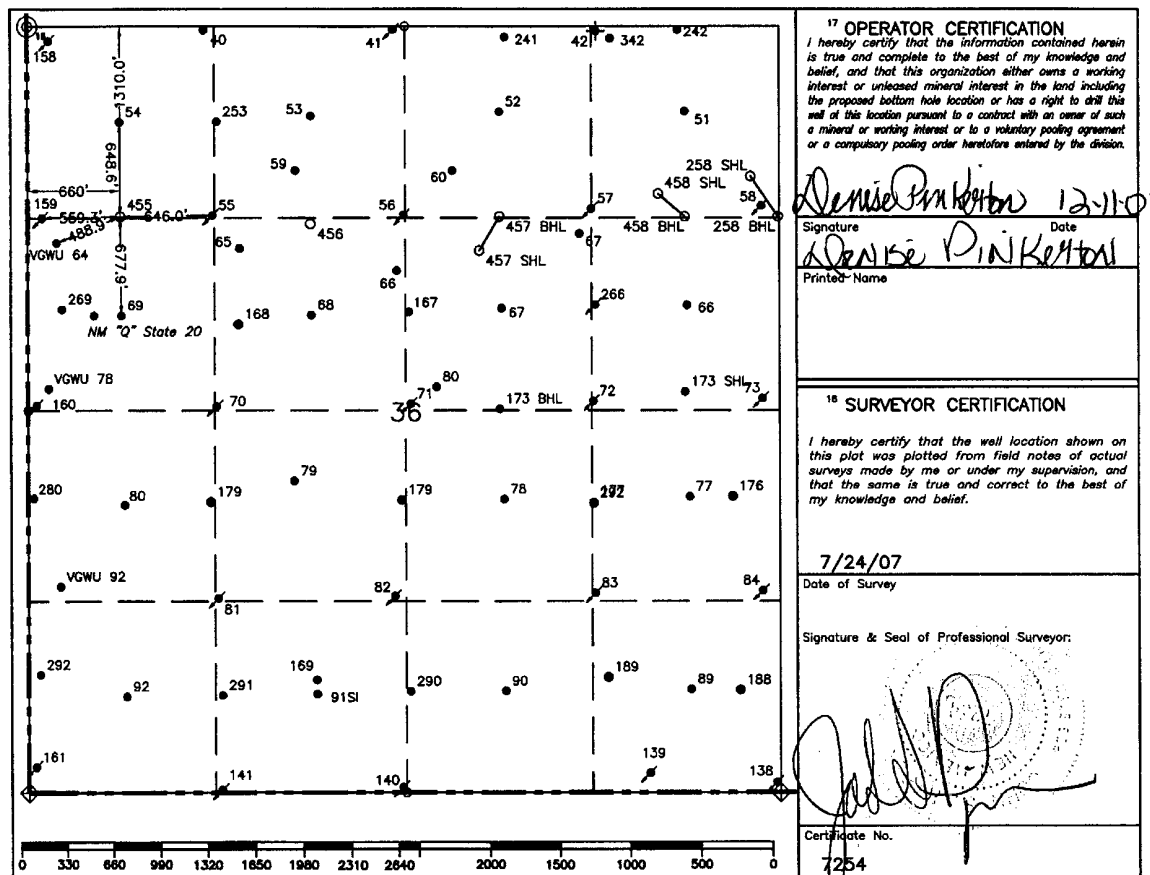
Submit to Appropriate District Office  
State Lease-4 copies  
Fee Lease-3 copies



☐ AMENDED REPORT

## WELL LOCATION AND ACREAGE DEDICATION PLAT

<sup>1</sup> API Number		<sup>2</sup> Pool Code C2180		San Andres		<sup>3</sup> Pool Name (VACUUM GRAYBURG)	
<sup>4</sup> Property Code		<sup>5</sup> Property Name Central Vacuum Unit				<sup>6</sup> Well Number 455	
<sup>7</sup> GRID No. 4323		<sup>8</sup> Operator Name CHEVRON USA, INC.				<sup>9</sup> Elevation 4008'	
<sup>10</sup> Surface Location							
UL or lot no. D	Section 36	Township 17-S	Range 34-E	Lot Idn	Feet from the 1310'	North/South line North	Feet from the 660'
						East/West line West	<sup>9</sup> County Lea
<sup>11</sup> Bottom Hole Location If Different From Surface							
UL or lot no.	Section	Township	Range	Lot Idn	Feet from the	North/South line	Feet from the
						East/West line	<sup>9</sup> County
<sup>12</sup> Dedicated Acres 10		<sup>13</sup> Joint or Infill		<sup>14</sup> Consolidation Code		<sup>15</sup> Order No.	

NO ALLOWABLE WILL BE ASSIGNED TO THIS COMPLETION UNTIL ALL INTERESTS HAVE BEEN CONSOLIDATED  
OR A NON-STANDARD UNIT HAS BEEN APPROVED BY THE DIVISION.



○ = Staked Location   ● = Producing Well    = Injection Well   ◇ = Water Supply Well    = Plugged & Abandon Well  
 ⊙ = Found Section Corner, 2 or 3" Iron Pipe & GLO B.C.   ○ = Found 1/4 Section Corner, 1" Iron Pipe & GLO B.C.

### ADDITIONAL INFORMATION ON THE LOCATION

State Plane Coordinates		Easting 791126.94 (1927 NAD= 749948.06)	
Northing 653965.33 (1927 NAD= 653900.27)			
Latitude 32°47'42.516"		Longitude 103°31'13.612"	
Zone	North American Datum	Combined Grid Factor	Coordinate File
East	1983	0.99979232	Buckeye.Crd
Drawing File CVU-Sec36.Dwg		Field Book N/A	

# Permit Conditions of Approval

Operator: CHEVRON U S A INC , 4323

Well: CENTRAL VACUUM UNIT #455

API: 30-025-38637

OCD Reviewer	Condition
pkautz	Pit construction and closure must satisfy all requirements of your approved plan, O.C.D. Rule 19.15.2.50, and the Pit and Below-Grade Tank Guidelines