

State of New Mexico
Energy, Minerals and Natural Resources
Oil Conservation Division
1220 S. St Francis Dr.
Santa Fe, NM 87505

APPLICATION FOR PERMIT TO DRILL, RE-ENTER, DEEPEN, PLUGBACK, OR ADD A ZONE

1. Operator Name and Address DEVON ENERGY PRODUCTION COMPANY, LP 20 N Broadway Oklahoma City, OK 73102		2. OGRID Number 6137
		3. API Number 30-025-39386
4. Property Code 30884	5. Property Name THISTLE UNIT	6. Well No. 010

7. Surface Location

UL - Lot	Section	Township	Range	Lot Idn	Feet From	N/S Line	Feet From	E/W Line	County
N	27	23S	33E	N	660	S	1980	W	LEA

8. Pool Information

JOHNSON RANCH;WOLFCAMP (GAS)	79335
------------------------------	-------

Additional Well Information

9. Work Type New Well	10. Well Type GAS	11. Cable/Rotary	12. Lease Type State	13. Ground Level Elevation 3670
14. Multiple N	15. Proposed Depth 17150	16. Formation Wolfcamp	17. Contractor	18. Spud Date 6/1/2009
Depth to Ground water		Distance from nearest fresh water well		Distance to nearest surface water
Pit: Liner: Synthetic <input type="checkbox"/> mls thick Clay <input type="checkbox"/> Pit Volume: bbls Drilling Method: Closed Loop System <input type="checkbox"/> Fresh Water <input checked="" type="checkbox"/> Brine <input type="checkbox"/> Diesel/Oil-based <input type="checkbox"/> Gas/Air <input type="checkbox"/>				

19. Proposed Casing and Cement Program

Type	Hole Size	Casing Type	Casing Weight/ft	Setting Depth	Sacks of Cement	Estimated TOC
Surf	17.5	13.375	54.5	1355	1070	0
Int1	12.25	9.625	40	5300	1555	0
Int2	8.75	7.625	39	13000	910	4800
Prod	6.5	5	23.2	17150	440	12700

Casing/Cement Program: Additional Comments

Cmt 13 3/8" with Lead 770 sx 35:65 Poz Premium Plus C; yield 1.96 cf/sx. Tail with 300 sx Prem Plus C; yield 1.35 cf/sx. Cmt 9 5/8" with Lead 1255 sx 50:50 Poz Prem Plus C; yield 2.24 cf/sx. Tail with 300 sx 60:40 Prem Plus C; yield 1.37 cf/sx. Cmt 7 5/8" 1st stage: Lead 220 sx 50:50 Poz; yield 2.3 cf/sx. Tail with 335 sx 15:61:11 Prem Plus C; yield 1.56 cf/sx DV tool at ~8000'. 2nd stage: Lead 205 sx 35:65 Poz Class H; yield 1.95 cf/sx. Tail with 150 sx 60:40 Poz Class H; yield 1.34 cf/sx. Cmt 5" liner with 440 sx 50:50 Poz H; yield 1.27 cf/sx. Mud program: 0-1355', 8.4-9.0, visc 32-34, N/C fluid loss, FW/Gel. 1355-5300', 8.8-9.2, visc 28-30, N/C, Brine. 5300-9000', 8.6-9.0, visc 28, N/C-40cc, Brine. 9000-13,000', 9.0-10.5, visc 32-40, NC-12cc, Brine. 13,000-17,150', 10-13, visc 33-50, 9-12 cc, Polymer/Brine.

Proposed Blowout Prevention Program

Type	Working Pressure	Test Pressure	Manufacturer
Annular	5000	5000	
DoubleRam	5000	5000	
Hydril	5000	5000	

I hereby certify that the information given above is true and complete to the best of my knowledge and belief. I further certify that the drilling pit will be constructed according to NMOC guidelines <input type="checkbox"/> , a general permit <input type="checkbox"/> , or an (attached) alternative OCB-approved plan <input type="checkbox"/> .	OIL CONSERVATION DIVISION Approved By: Paul Kautz Title: Geologist Approved Date: 4/9/2009 Expiration Date: 4/9/2011
Printed Name: Electronically filed by Randy Bolles	
Title:	
Email Address: randy.bolles@dvn.com	
Date: 4/2/2009 Phone: 405-228-8588	Conditions of Approval Attached

DISTRICT I
1826 N. French Dr., Hobbs, NM 88240

DISTRICT II
1201 V. Grand Avenue, Artesia, NM 88210

DISTRICT III
1000 Rio Brazos Rd., Artec, NM 87410

DISTRICT IV
1220 S. St. Francis Dr., Santa Fe, NM 87606

State of New Mexico
Energy, Minerals and Natural Resources Department

Form C-102
Revised October 12, 2005

Submit to Appropriate District Office
State Lease - 4 Copies
Fee Lease - 3 Copies

OIL CONSERVATION DIVISION
1220 South St. Francis Dr.
Santa Fe, New Mexico 87505

WELL LOCATION AND ACREAGE DEDICATION PLAT

AMENDED REPORT

API Number	Pool Code	Pool Name
	79335	Johnson Ranch Wolfcamp
Property Code	Property Name	Well Number
	THISTLE UNIT	10H
OGRID No.	Operator Name	Elevation
6137	DEVON ENERGY PRODUCTION COMPANY LP	3670'

Surface Location

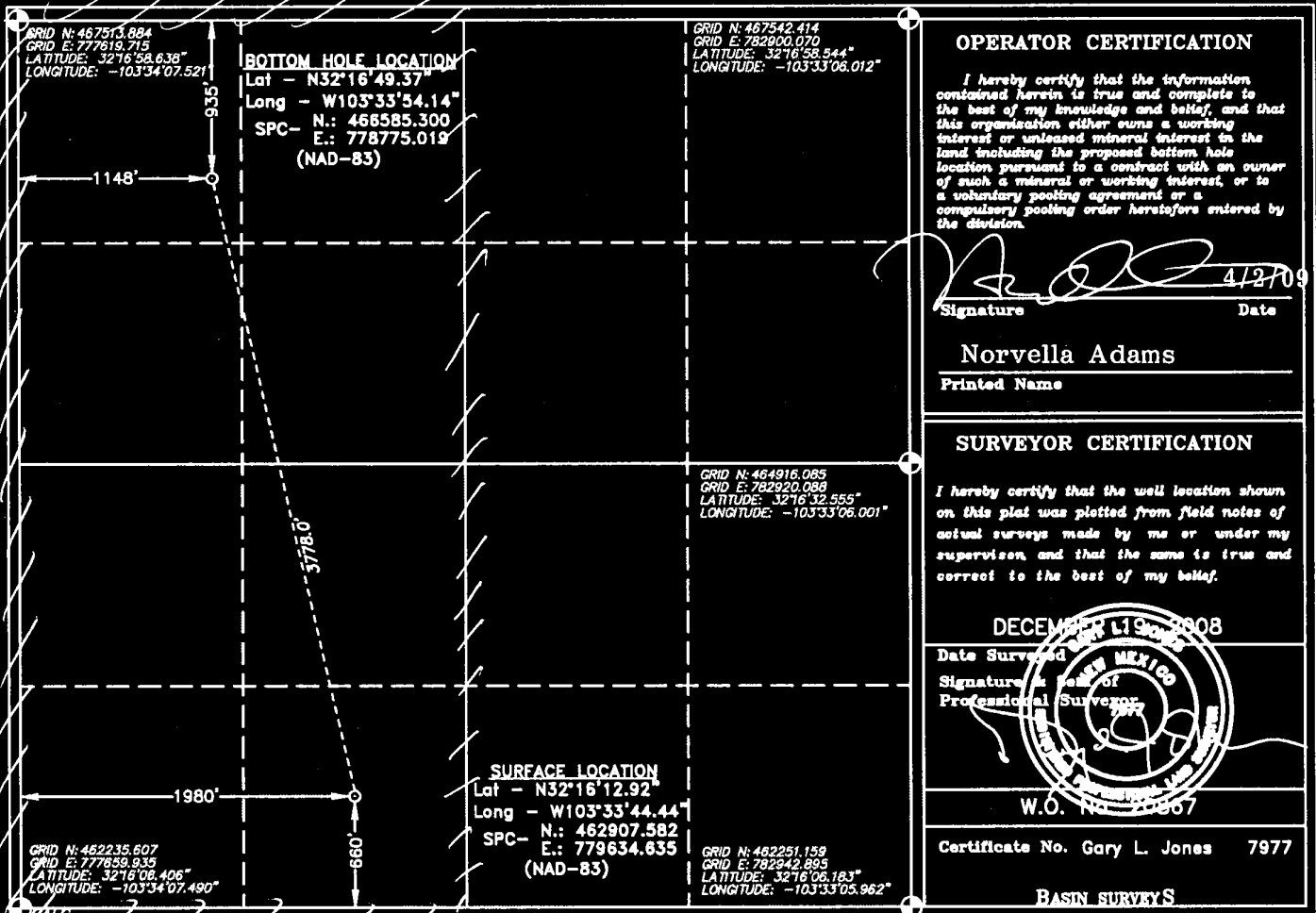
UL or lot No.	Section	Township	Range	Lot Idn	Feet from the	North/South line	Feet from the	East/West line	County
N	27	23 S	33 E		660	SOUTH	1980	WEST	LEA

Bottom Hole Location If Different From Surface

UL or lot No.	Section	Township	Range	Lot Idn	Feet from the	North/South line	Feet from the	East/West line	County
D	27	23 S	33 E		935	NORTH	1148	WEST	LEA

Dedicated Acres	Joint or Infill	Consolidation Code	Order No.
320			

NO ALLOWABLE WILL BE ASSIGNED TO THIS COMPLETION UNTIL ALL INTERESTS HAVE BEEN CONSOLIDATED OR A NON-STANDARD UNIT HAS BEEN APPROVED BY THE DIVISION



Permit Comments

Operator: DEVON ENERGY PRODUCTION COMPANY, LP , 6137

Well: THISTLE UNIT #010

API: 30-025-39386

Created By	Comment	Comment Date
ADAMSN	No H2S is expected in this area. A gas analysis and a Form C144 CLEZ will submitted under separate cover.	4/2/2009
DMULL	OCD received form C-144 "Pit Registration". OCD Permit Number P1-01023.	4/9/2009

Permit Conditions of Approval

Operator: DEVON ENERGY PRODUCTION COMPANY, LP , 6137

Well: THISTLE UNIT #010

API: 30-025-39386

OCD Reviewer	Condition
DMULL	Will require a directional survey with the C-104
pkautz	Surface casing must be set 25' below top Rustler Anhydrite