

District I
1625 N. French Dr., Hobbs, NM 88240
Phone:(575) 393-6161 Fax:(575) 393-0720

District II
811 S. First St., Artesia, NM 88210
Phone:(575) 748-1283 Fax:(575) 748-9720

District III
1000 Rio Brazos Rd., Aztec, NM 87410
Phone:(505) 334-6178 Fax:(505) 334-6170

District IV
1220 S. St Francis Dr., Santa Fe, NM 87505
Phone:(505) 476-3470 Fax:(505) 476-3462

State of New Mexico
Energy, Minerals and Natural Resources
Oil Conservation Division
1220 S. St Francis Dr.
Santa Fe, NM 87505

Form C-101
August 1, 2011
Permit 146964

APPLICATION FOR PERMIT TO DRILL, RE-ENTER, DEEPEN, PLUGBACK, OR ADD A ZONE

1. Operator Name and Address OXY USA WTP LIMITED PARTNERSHIP PO Box 4294 Houston, TX 77210		2. OGRID Number 192463
		3. API Number 30-015-40163
4. Property Code 309602	5. Property Name PIGLET 21 STATE	6. Well No. 003

7. Surface Location

UL - Lot	Section	Township	Range	Lot Idn	Feet From	N/S Line	Feet From	E/W Line	County
P	21	17S	28E	P	1014	S	1000	E	EDDY

8. Pool Information

ARTESIA; GLORIETA-YESO (O)	96830
----------------------------	-------

Additional Well Information

9. Work Type New Well	10. Well Type OIL	11. Cable/Rotary	12. Lease Type State	13. Ground Level Elevation 3632
14. Multiple N	15. Proposed Depth 5200	16. Formation Yeso Formation	17. Contractor	18. Spud Date 5/13/2012
Depth to Ground water		Distance from nearest fresh water well		Distance to nearest surface water

19. Proposed Casing and Cement Program

Type	Hole Size	Casing Type	Casing Weight/ft	Setting Depth	Sacks of Cement	Estimated TOC
Surf	12.25	9.625	36	400	250	0
Prod	8.75	5.5	17	5200	2080	0

Casing/Cement Program: Additional Comments

--

Proposed Blowout Prevention Program

Type	Working Pressure	Test Pressure	Manufacturer
Annular	5000	5000	Schaffer
DoubleRam	5000	5000	Schaffer

I hereby certify that the information given above is true and complete to the best of my knowledge and belief. I further certify that the drilling pit will be constructed according to NMOCD guidelines <input type="checkbox"/> , a general permit <input type="checkbox"/> , or an (attached) alternative OCD-approved plan <input type="checkbox"/> .	OIL CONSERVATION DIVISION	
	Approved By: Randy Dade	
Printed Name: Electronically filed by KAREN M SINARD	Title: District Supervisor	
Title:	Approved Date: 4/16/2012	Expiration Date: 4/16/2014
Email Address: karen_sinard@oxy.com		
Date: 4/11/2012	Phone: 713-366-5485	Conditions of Approval Attached

District I
1625 N. French Dr., Hobbs, NM 88240
District II
1301 W. Grand Avenue, Artesia, NM 88210
District III
1000 Rio Brazos Rd., Aztec, NM 87410
District IV
1220 S. St. Francis Dr., Santa Fe, NM 87505

State of New Mexico
Energy, Minerals & Natural Resources Department
OIL CONSERVATION DIVISION
1220 South St. Francis Dr.
Santa Fe, NM 87505

Form C-402
Revised October 12, 2005
Submit to Appropriate District Office
State Lease- 4 Copies
Fee Lease- 3 Copies

AMENDED REPORT

WELL LOCATION AND ACREAGE DEDICATION PLAT

API Number	Pool Code	Pool Name
	96830	Artesia Glacieta-Yesolo
Property Code	Property Name	Well Number
	PIGLET "21" STATE	3
OGRID No.	Operator Name	Elevation
192463	OXY USA LUTP LP	3632.0'

Surface Location

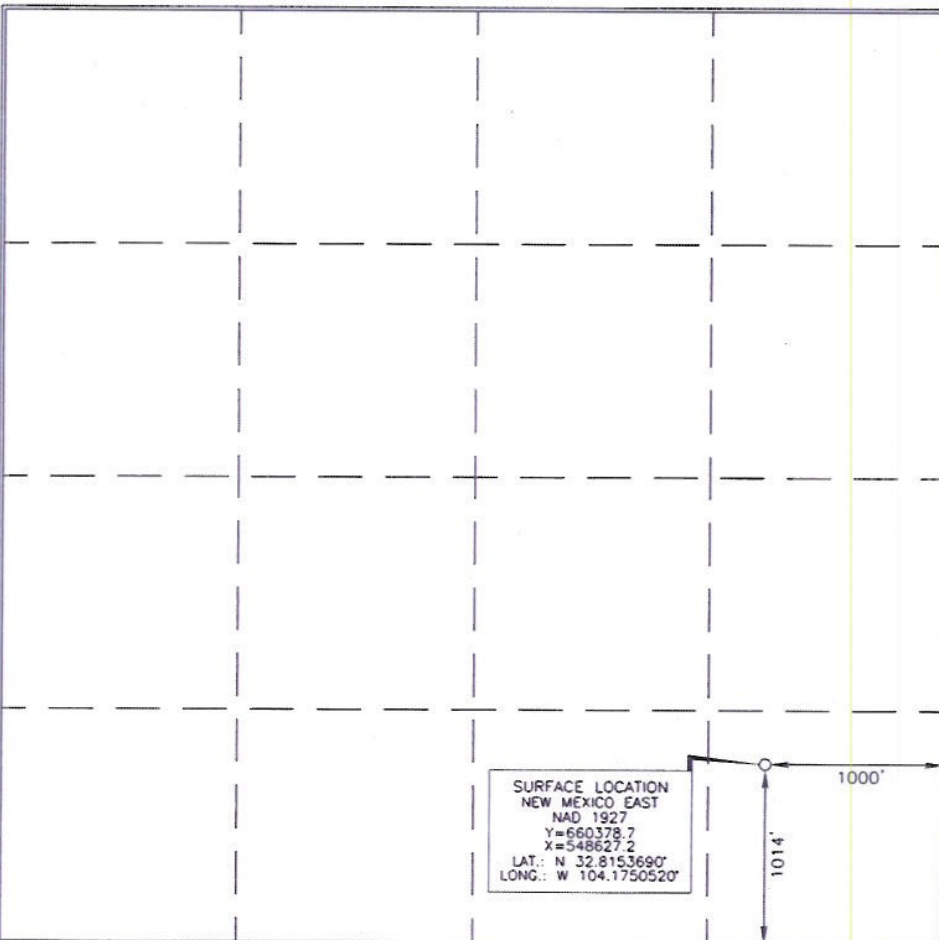
UL or lot no.	Section	Township	Range	Lot Idn	Feet from the	North/South line	Feet from the	East/West line	County
P	21	17 SOUTH	28 EAST, N.M.P.M.		1014'	SOUTH	1000'	EAST	EDDY

Bottom Hole Location If Different From Surface

UL or lot no.	Section	Township	Range	Lot Idn	Feet from the	North/South line	Feet from the	East/West line	County

Dedicated Acres	Joint or Infill	Consolidation Code	Order No.

No allowable will be assigned to this completion until all interests have been consolidated or a non-standard unit has been approved by the division.



OPERATOR CERTIFICATION

I hereby certify that the information contained herein is true and complete to the best of my knowledge and belief, and that this organization either owns a working interest or unleased mineral interest in the land including the proposed bottom hole location or has a right to drill this well at this location pursuant to a contract with an owner of such a mineral or working interest, or to a voluntary pooling agreement or a compulsory pooling order heretofore entered by the division.

Jennifer Duarte 4/11/12
Signature Date

Jennifer Duarte
Printed Name

SURVEYOR CERTIFICATION

I hereby certify that the well location shown on this plat was plotted from field notes or actual surveys made by me or under my supervision, and that the same is true and correct to the best of my belief.

MAY 27, 2011
Date of Survey

Signature and Seal of Professional Surveyor

Jerry D. Asel 12/2/2011
Certificate Number 15079

WO# 110527WL-i (Rev. A) (NA)

Permit Comments

Operator: OXY USA WTP LIMITED PARTNERSHIP , 192463

Well: PIGLET 21 STATE #003

API: 30-015-40163

Created By	Comment	Comment Date
jduarte	Other operating company was notified on 2/21/2012 and a copy of the letter and the return receipts will be mailed along with the additional attachments.	4/11/2012
CSHAPARD	Land s/S	4/13/2012

Permit Conditions of Approval

Operator: OXY USA WTP LIMITED PARTNERSHIP , 192463

Well: PIGLET 21 STATE #003

API: 30-015-40163

OCD Reviewer	Condition
CSHAPARD	Once the well is spud, to prevent ground water contamination through whole or partial conduits from the surface, the operator shall drill without interruption through the fresh water zone or zones and shall immediately set in cement the water protection string