

**District I**  
1625 N. French Dr., Hobbs, NM 88240  
Phone:(575) 393-6161 Fax:(575) 393-0720  
**District II**  
811 S. First St., Artesia, NM 88210  
Phone:(575) 748-1283 Fax:(575) 748-9720  
**District III**  
1000 Rio Brazos Rd., Aztec, NM 87410  
Phone:(505) 334-6178 Fax:(505) 334-6170  
**District IV**  
1220 S. St Francis Dr., Santa Fe, NM 87505  
Phone:(505) 476-3470 Fax:(505) 476-3462

**State of New Mexico**  
**Energy, Minerals and Natural Resources**  
**Oil Conservation Division**  
**1220 S. St Francis Dr.**  
**Santa Fe, NM 87505**

Form C-101  
August 1, 2011  
Permit 150983

**APPLICATION FOR PERMIT TO DRILL, RE-ENTER, DEEPEN, PLUGBACK, OR ADD A ZONE**

|  |  |                                      |
|--|--|--------------------------------------|
| <b>1. Operator Name and Address</b><br>OXY USA WTP LIMITED PARTNERSHIP<br>PO Box 4294<br>Houston, TX 77210 |  | <b>2. OGRID Number</b><br>192463     |
|  |  | <b>3. API Number</b><br>30-015-40432 |
| <b>4. Property Code</b><br>309602  | <b>5. Property Name</b><br>PIGLET 21 STATE | <b>6. Well No.</b><br>014            |

**7. Surface Location**

| UL - Lot | Section | Township | Range | Lot Idn | Feet From | N/S Line | Feet From | E/W Line | County |
|----------|---------|----------|-------|---------|-----------|----------|-----------|----------|--------|
| L        | 21      | 17S      | 28E   | L       | 2100      | S        | 885       | W        | EDDY   |

**8. Pool Information**

|                            |       |
|----------------------------|-------|
| ARTESIA; GLORIETA-YESO (O) | 96830 |
|----------------------------|-------|

**Additional Well Information**

|                                 |                                   |   |                                |   |
|---------------------------------|-----------------------------------|---|--------------------------------|---|
| <b>9. Work Type</b><br>New Well | <b>10. Well Type</b><br>OIL       | <b>11. Cable/Rotary</b>                       | <b>12. Lease Type</b><br>State | <b>13. Ground Level Elevation</b><br>3634 |
| <b>14. Multiple</b><br>N        | <b>15. Proposed Depth</b><br>5200 | <b>16. Formation</b><br>Yeso Formation        | <b>17. Contractor</b>          | <b>18. Spud Date</b><br>8/27/2012         |
| <b>Depth to Ground water</b>    |                                   | <b>Distance from nearest fresh water well</b> |                                | <b>Distance to nearest surface water</b>  |

**19. Proposed Casing and Cement Program**

| Type | Hole Size | Casing Type | Casing Weight/ft | Setting Depth | Sacks of Cement | Estimated TOC |
|------|-----------|-------------|------------------|---------------|-----------------|---------------|
| Surf | 12.25     | 9.625       | 36               | 400           | 400             | 0             |
| Prod | 7.875     | 5.5         | 17               | 5200          | 2080            | 0             |

**Casing/Cement Program: Additional Comments**

|  |
|--|
|  |
|--|

**Proposed Blowout Prevention Program**

| Type    | Working Pressure | Test Pressure | Manufacturer |
|---------|------------------|---------------|--------------|
| Annular | 3000             | 3000          |              |

|  |                                     |                                 |
|--|-------------------------------------|---------------------------------|
| I hereby certify that the information given above is true and complete to the best of my knowledge and belief.<br>I further certify that the drilling pit will be constructed according to NMOCD guidelines <input type="checkbox"/> , a general permit <input type="checkbox"/> , or an (attached) alternative OCD-approved plan <input type="checkbox"/> . | <b>OIL CONSERVATION DIVISION</b>    |                                 |
|  | Approved By: Randy Dade             |                                 |
|  | Title: District Supervisor          |                                 |
|  | Approved Date: 7/6/2012             | Expiration Date: 7/6/2014       |
|  | Email Address: karen_sinard@oxy.com |                                 |
| Date: 6/28/2012  | Phone: 713-366-5485                 | Conditions of Approval Attached |

## DISTRICT I

1625 N. French Dr., Hobbs, NM 88240  
Phone: (575) 393-6161 Fax: (575) 393-0720

State of New Mexico  
Energy, Minerals & Natural Resources Department  
OIL CONSERVATION DIVISION

1220 South St. Francis Dr.  
Santa Fe, New Mexico 87505

Form C-102  
Revised August 1, 2011  
Submit one copy to appropriate  
District Office

## DISTRICT II

811 S. First St., Artesia, NM 88210  
Phone: (575) 748-1283 Fax: (575) 748-9720

## DISTRICT III

1000 Rio Brazos Road, Aztec, NM 87410  
Phone: (505) 334-6178 Fax: (505) 334-6170

## DISTRICT IV

1220 S. St. Francis Dr., Santa Fe, NM 87505  
Phone: (505) 476-3460 Fax: (505) 476-3462

☐ AMENDED REPORT

## WELL LOCATION AND ACREAGE DEDICATION PLAT

|               |                                 |                           |
|---------------|---------------------------------|---------------------------|
| API Number    | Pool Code                       | Pool Name                 |
| 309602        | 96830                           | Artesia; Garieta-Reso (O) |
| Property Code | Property Name                   | Well Number               |
| 192463        | PIGLET 21 STATE                 | 14                        |
| OGRID No.     | Operator Name                   | Elevation                 |
|               | 0X4 USA LTP Limited Partnership | 3634'                     |

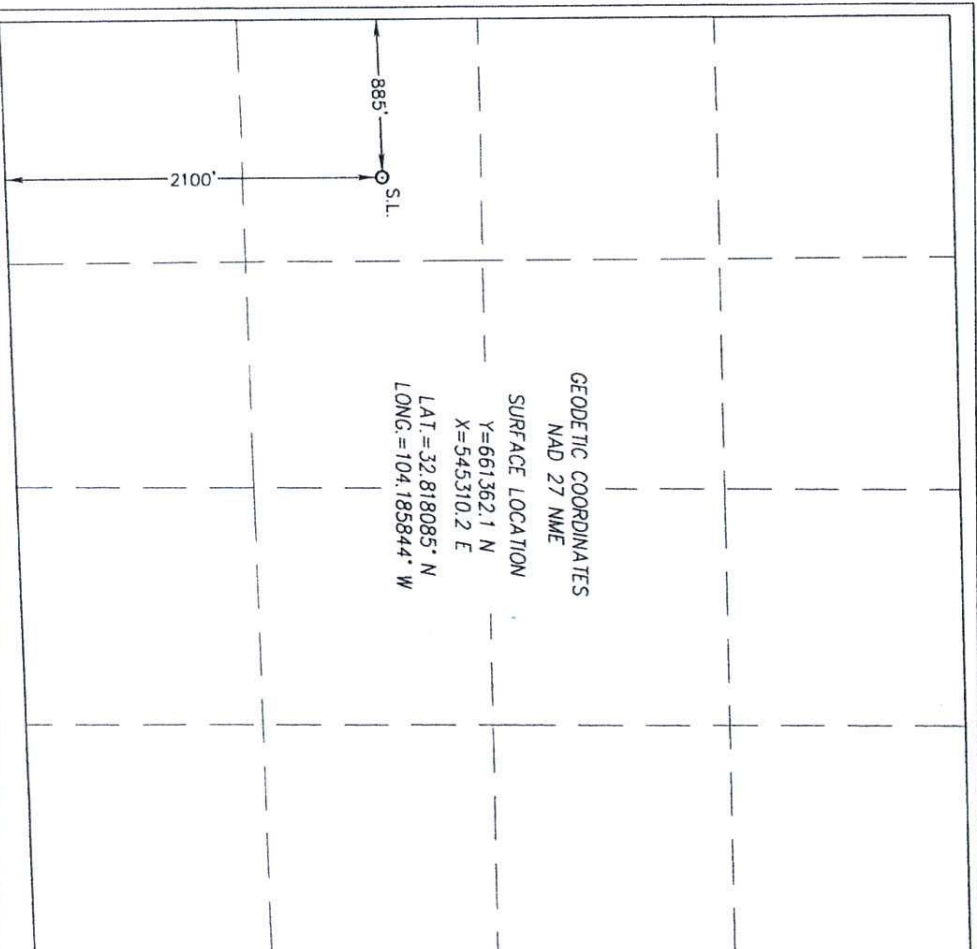
## Surface Location

| UL or lot No. | Section | Township | Range | Lot Idn | Feet from the | North/South line | Feet from the | East/West line | County |
|---------------|---------|----------|-------|---------|---------------|------------------|---------------|----------------|--------|
| L             | 21      | 17-S     | 28-E  |         | 2100          | SOUTH            | 885           | WEST           | EDDY   |

## Bottom Hole Location If Different From Surface

| UL or lot No.   | Section         | Township           | Range     | Lot Idn | Feet from the | North/South line | Feet from the | East/West line | County |
|-----------------|-----------------|--------------------|-----------|---------|---------------|------------------|---------------|----------------|--------|
|                 |                 |                    |           |         |               |                  |               |                |        |
| Dedicated Acres | Joint or Infill | Consolidation Code | Order No. |         |               |                  |               |                |        |

NO ALLOWABLE WILL BE ASSIGNED TO THIS COMPLETION UNTIL ALL INTERESTS HAVE BEEN CONSOLIDATED OR A NON-STANDARD UNIT HAS BEEN APPROVED BY THE DIVISION



## OPERATOR CERTIFICATION

I hereby certify that the information herein is true and complete to the best of my knowledge and belief, and that this organization either owns a working interest or unleased mineral interest in the land including the proposed bottom hole location or has a right to drill this well at this location pursuant to a contract with an owner of such mineral or working interest, or to a voluntary pooling agreement or a compulsory pooling order heretofore entered by the division.

Signature *[Signature]* Date *6/6/12*

Printed Name *Senifer Darte*

E-mail Address *senifer.darte@ox.com*

## SURVEYOR CERTIFICATION

I hereby certify that the well location shown on this plat was plotted from field notes of actual surveys made by me or under my supervision, and that the same is true and correct to the best of my belief.

MAY 15, 2012

Date of Survey  
Signature & Seal of Professional Surveyor:

*[Signature]*  
RONALD J. EIDSON  
3239  
NEW MEXICO  
Professional Surveyor  
Certificate Number *3239* Date *06/06/2012*  
Ronald J. Eidson 12641  
3239  
JWSC W.O.: 12.11.0728  
AF

## Permit Comments

**Operator:** OXY USA WTP LIMITED PARTNERSHIP , 192463

**Well:** PIGLET 21 STATE #014

**API:** 30-015-40432

| Created By | Comment  | Comment Date |
|------------|----------|--------------|
| CSHAPARD   | Land s/S | 6/29/2012    |

# Permit Conditions of Approval

**Operator:** OXY USA WTP LIMITED PARTNERSHIP , 192463

**Well:** PIGLET 21 STATE #014

**API:** 30-015-40432

| OCD<br>Reviewer | Condition  |
|-----------------|--|
| CSHAPARD        | Once the well is spud, to prevent ground water contamination through whole or partial conduits from the surface, the operator shall drill without interruption through the fresh water zone or zones and shall immediately set in cement the water protection string |