

District I
1625 N. French Dr., Hobbs, NM 88240
Phone:(575) 393-6161 Fax:(575) 393-0720
District II
811 S. First St., Artesia, NM 88210
Phone:(575) 748-1283 Fax:(575) 748-9720
District III
1000 Rio Brazos Rd., Aztec, NM 87410
Phone:(505) 334-6178 Fax:(505) 334-6170
District IV
1220 S. St Francis Dr., Santa Fe, NM 87505
Phone:(505) 476-3470 Fax:(505) 476-3462

State of New Mexico
Energy, Minerals and Natural Resources
Oil Conservation Division
1220 S. St Francis Dr.
Santa Fe, NM 87505

Form C-101
August 1, 2011
Permit 169318

APPLICATION FOR PERMIT TO DRILL, RE-ENTER, DEEPEN, PLUGBACK, OR ADD A ZONE

1. Operator Name and Address APACHE CORP 303 Veterans Airpark Lane Midland, TX 79705		2. OGRID Number 873
4. Property Code 39734		3. API Number 30-015-41505
5. Property Name AB STATE 647		6. Well No. 004

7. Surface Location

UL - Lot	Section	Township	Range	Lot Idn	Feet From	N/S Line	Feet From	E/W Line	County
L	32	17S	28E	L	2250	S	1185	W	EDDY

8. Proposed Bottom Hole Location

UL - Lot	Section	Township	Range	Lot Idn	Feet From	N/S Line	Feet From	E/W Line	County
L	32	17S	28E	K	2250	S	1185	W	Eddy

9. Pool Information

ARTESIA; GLORIETA-YESO (O)	96830
----------------------------	-------

Additional Well Information

11. Work Type New Well	12. Well Type OIL	13. Cable/Rotary	14. Lease Type State	15. Ground Level Elevation 3686
16. Multiple N	17. Proposed Depth 5100	18. Formation Yeso Formation	19. Contractor	20. Spud Date
Depth to Ground water		Distance from nearest fresh water well		Distance to nearest surface water

21. Proposed Casing and Cement Program

Type	Hole Size	Casing Type	Casing Weight/ft	Setting Depth	Sacks of Cement	Estimated TOC
Surf	12.25	8.625	24	400	260	
Prod	7.875	5.5	17	5100	900	

Casing/Cement Program: Additional Comments

--

22. Proposed Blowout Prevention Program

Type	Working Pressure	Test Pressure	Manufacturer
Hydril	3000	2000	

23. I hereby certify that the information given above is true and complete to the best of my knowledge and belief. I further certify I have complied with 19.15.14.9 (A) NMAC <input checked="" type="checkbox"/> and/or 19.15.14.9 (B) NMAC <input checked="" type="checkbox"/> , if applicable. Signature: Printed Name: Electronically filed by Bobby Smith Title: Email Address: bobby.smith@apachecorp.com Date: 6/27/2013	<div style="text-align: center;">OIL CONSERVATION DIVISION</div> Approved By: Randy Dade Title: District Supervisor Approved Date: 6/27/2013 Expiration Date: 6/27/2015 Conditions of Approval Attached
Phone: 432-818-1020	

DISTRICT I

2126 N. French Dr., Hobbs, NM 88240
Phone (505) 398-8211 Fax (505) 398-9720

DISTRICT II

811 S. First St., Artesia, NM 88210
Phone (505) 748-1283 Fax (505) 748-9720

DISTRICT III

1000 Rio Brazos Rd., Aztec, NM 87410
Phone (505) 384-8178 Fax (505) 384-9720

DISTRICT IV

1210 S. St. Francis Dr., Santa Fe, NM 87505
Phone (505) 476-3480 Fax (505) 476-3482

State of New Mexico
Energy, Minerals and Natural Resources Department

OIL CONSERVATION DIVISION

1210 South St. Francis Dr.
Santa Fe, New Mexico 87505

Form C-102

Revised August 1, 2011

Submit one copy to appropriate
District Office

WELL LOCATION AND ACREAGE DEDICATION PLAT

☐ AMENDED REPORT

API Number 30-015-	Pool Code 96830	Pool Name Artesia, Glorieta-Yeso
Property Code 39734	Property Name AB STATE 647	Well Number 4
GRID No. 873	Operator Name APACHE CORPORATION	Elevation 3686

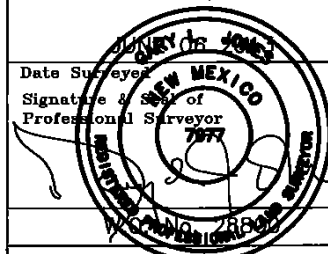
Surface Location

UL or lot No.	Section	Township	Range	Lot Idn	Feet from the	North/South Hne	Feet from the	East/West line	County
L	32	17 S	28 E		2250	SOUTH	1185	WEST	EDDY

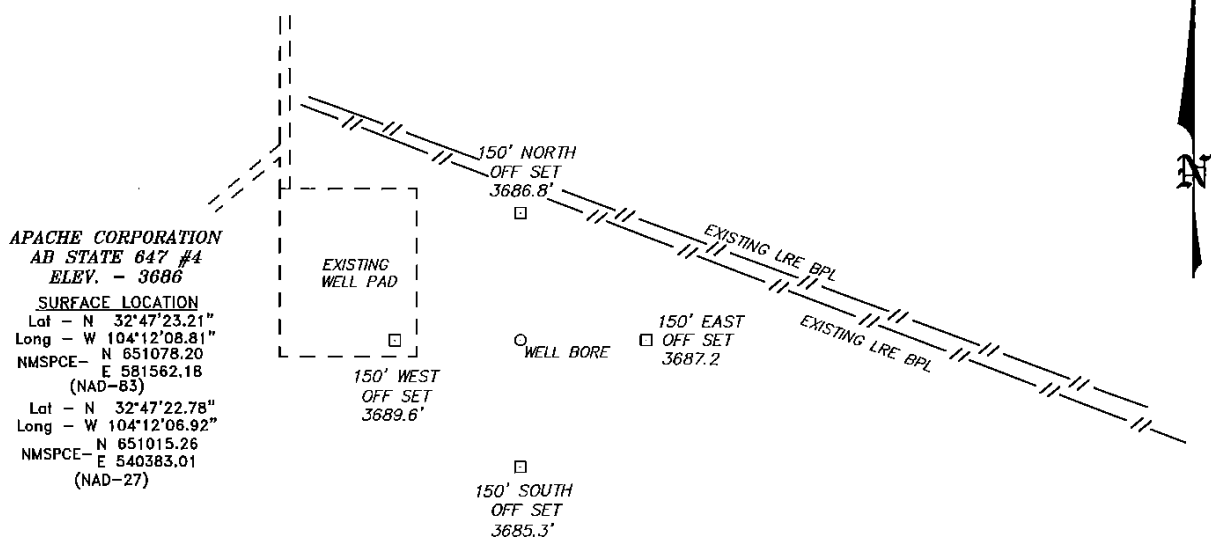
Bottom Hole Location If Different From Surface

UL or lot No.	Section	Township	Range	Lot Idn	Feet from the	North/South Hne	Feet from the	East/West line	County
Dedicated Acres 4.0	Joint or Infill	Consolidation Code	Order No.						

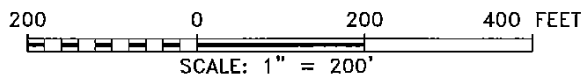
NO ALLOWABLE WILL BE ASSIGNED TO THIS COMPLETION UNTIL ALL INTERESTS HAVE BEEN CONSOLIDATED
OR A NON-STANDARD UNIT HAS BEEN APPROVED BY THE DIVISION

N 654017.13 E 580331.75 (NAD-83)		N 657060.70 E 582941.71 (NAD-83)	N 654103.79 E 585547.25 (NAD-83)	OPERATOR CERTIFICATION I hereby certify that the information contained herein is true and complete to the best of my knowledge and belief, and that this organization either owns a working interest or unleased mineral interest in the land including the proposed bottom hole location or has a right to drill this well at this location pursuant to a contract with an owner of such a mineral or working interest, or to a voluntary pooling agreement or a compulsory pooling order heretofore entered by the division. <u>Kristina Agee</u> 6/27/13 Signature Date <u>Kristina Agee</u> Printed Name <u>Kristina.agee@apachecorp.com</u> Email Address
SURFACE LOCATION Lat - N 32°47'23.21" Long - W 104°12'08.81" NMSPC- N 651078.20 E 581562.18 (NAD-83) Lat - N 32°47'22.78" Long - W 104°12'06.92" NMSPC- N 651015.26 E 540383.01 (NAD-27)				
1185'				
2250'				
N 648805.41 E 580413.02 (NAD-83)		N 648857.37 E 583013.65 (NAD-83)	N 648910.14 E 585613.45 (NAD-83)	SURVEYOR CERTIFICATION I hereby certify that the well location shown on this plat was plotted from field notes of actual surveys made by me or under my supervision, and that the same is true and correct to the best of my belief.  Date Surveyed Signature & Seal of Professional Surveyor Certificate No. Gary L. Jones 7977 BASIN SURVEYS 28800

SECTION 32, TOWNSHIP 17 SOUTH, RANGE 28 EAST, N.M.P.M.,
EDDY COUNTY, NEW MEXICO.



WELL IS LOCATED ±12 MILES SOUTHEAST OF ARTESIA, NEW MEXICO.



Directions to Location:

FROM HIGHWAY 82 AND ILLINOIS CAMP GO SOUTH
0.3 MILES TURN WEST 0.3 MILES TO PROPOSED
WELL LOCATION.

BASIN SURVEYS P.O. BOX 1786--HOBBS, NEW MEXICO

W.O. Number: 28800

Drawn By: D. JONES

Date: 06-12-2013

Disk: DAJ 28800

APACHE CORPORATION

REF: AB STATE 647 #4/ WELL PAD TOPO

THE AB STATE 647 #4 LOCATED 2250'

FROM THE SOUTH LINE AND 1185' FROM THE WEST LINE OF
SECTION 32, TOWNSHIP 17 SOUTH, RANGE 28 EAST,

N.M.P.M., EDDY COUNTY, NEW MEXICO.

Survey Date: 06-06-2013

Sheet 1 of 1 Sheets

Permit Conditions of Approval

Operator: APACHE CORP , 873

Well: AB STATE 647 #004

API: 30-015-41505

OCD Reviewer	Condition
RDADE	Once the well is spud, to prevent ground water contamination through whole or partial conduits from the surface, the operator shall drill without interruption through the fresh water zone or zones and shall immediately set in cement the water protection string
RDADE	Pit construction and closure must satisfy all requirements of your approved plan, O.C.D. Rule 19.15.2.50, and the Pit and Below-Grade Tank Guidelines