

District I
1625 N. French Dr., Hobbs, NM 88240
Phone:(575) 393-6161 Fax:(575) 393-0720

District II
811 S. First St., Artesia, NM 88210
Phone:(575) 748-1283 Fax:(575) 748-9720

District III
1000 Rio Brazos Rd., Aztec, NM 87410
Phone:(505) 334-6178 Fax:(505) 334-6170

District IV
1220 S. St Francis Dr., Santa Fe, NM 87505
Phone:(505) 476-3470 Fax:(505) 476-3462

State of New Mexico
Energy, Minerals and Natural Resources
Oil Conservation Division
1220 S. St Francis Dr.
Santa Fe, NM 87505

Form C-101
August 1, 2011
Permit 178344

APPLICATION FOR PERMIT TO DRILL, RE-ENTER, DEEPEN, PLUGBACK, OR ADD A ZONE

1. Operator Name and Address OXY USA WTP LIMITED PARTNERSHIP PO Box 4294 Houston, TX 77210		2. OGRID Number 192463
		3. API Number 30-015-41857
4. Property Code 302161	5. Property Name STATE CV COM	6. Well No. 002H

7. Surface Location

UL - Lot H	Section 16	Township 20S	Range 28E	Lot Idn	Feet From 1700	N/S Line N	Feet From 300	E/W Line E	County Eddy
---------------	---------------	-----------------	--------------	---------	-------------------	---------------	------------------	---------------	----------------

8. Proposed Bottom Hole Location

UL - Lot E	Section 16	Township 20S	Range 28E	Lot Idn E	Feet From 1700	N/S Line N	Feet From 330	E/W Line W	County Eddy
---------------	---------------	-----------------	--------------	--------------	-------------------	---------------	------------------	---------------	----------------

9. Pool Information

OLD MILLMAN RANCH;BS (ASSOC)	48035
------------------------------	-------

Additional Well Information

11. Work Type New Well	12. Well Type OIL	13. Cable/Rotary	14. Lease Type State	15. Ground Level Elevation 3275
16. Multiple N	17. Proposed Depth 11863	18. Formation Bone Spring	19. Contractor	20. Spud Date 4/20/2014
Depth to Ground water		Distance from nearest fresh water well		Distance to nearest surface water

We will be using a closed-loop system in lieu of lined pits

21. Proposed Casing and Cement Program

Type	Hole Size	Casing Size	Casing Weight/ft	Setting Depth	Sacks of Cement	Estimated TOC
Surf	18.5	16	75	285	200	0
Int1	14.75	11.75	47	1050	600	0
Int2	10.625	8.625	32	3150	800	0
Prod	7.875	5.5	17	11863	1250	0

Casing/Cement Program: Additional Comments

--

22. Proposed Blowout Prevention Program

Type	Working Pressure	Test Pressure	Manufacturer
Annular	5000	5000	
Double Ram	5000	5000	

<p>23. I hereby certify that the information given above is true and complete to the best of my knowledge and belief. I further certify I have complied with 19.15.14.9 (A) NMAC <input checked="" type="checkbox"/> and/or 19.15.14.9 (B) NMAC <input checked="" type="checkbox"/>, if applicable.</p> <p>Signature:</p> <p>Printed Name: Electronically filed by KAREN M SINARD</p> <p>Title:</p> <p>Email Address: karen_sinard@oxy.com</p> <p>Date: 12/11/2013</p> <p>Phone: 713-366-5485</p>	<p>OIL CONSERVATION DIVISION</p> <p>Approved By: Randy Dade</p> <p>Title: District Supervisor</p> <p>Approved Date: 12/12/2013</p> <p>Expiration Date: 12/12/2015</p> <p>Conditions of Approval Attached</p>
---	---

District I
1625 N. French Dr., Hobbs, NM 88240
Phone: (575) 393-6161 Fax: (575) 393-0720
District II
811 S. First St., Artesia, NM 88210
Phone: (575) 748-1283 Fax: (575) 748-9720
District III
1600 Rio Brasas Road, Aztec, NM 87410
Phone: (505) 334-6178 Fax: (505) 334-6170
District IV
1220 S. St. Francis Dr., Santa Fe, NM 87505
Phone: (505) 476-3460 Fax: (505) 476-3462

State of New Mexico
Energy, Minerals & Natural Resources Department
OIL CONSERVATION DIVISION
1220 South St. Francis Dr.
Santa Fe, NM 87505

Form C-102
Revised August 1, 2011
Submit one copy to appropriate
District Office

AMENDED REPORT

WELL LOCATION AND ACREAGE DEDICATION PLAT

API Number	48035	Pool Code	Old Millman Ranch Bone Spring	Pool Name
Property Code	302161	Property Name	STATE CV COM	Well Number
OGRID No.	192463	Operator Name	OXY USA WTP LP	Elevation
				3274.7'

Surface Location

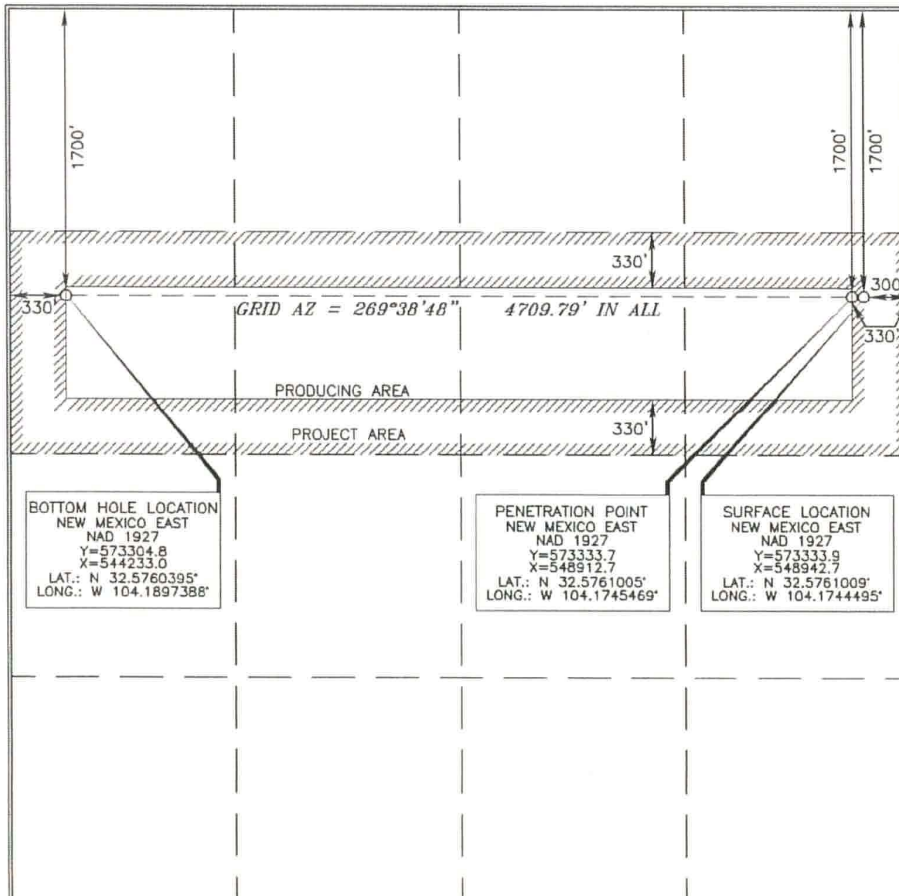
UL or lot no.	Section	Township	Range	Lot Idn	Feet from the	North/South line	Feet from the	East/West line	County
H	16	20 SOUTH	28 EAST, N.M.P.M.		1700'	NORTH	300'	EAST	EDDY

Bottom Hole Location If Different From Surface

UL or lot no.	Section	Township	Range	Lot Idn	Feet from the	North/South line	Feet from the	East/West line	County
E	16	20 SOUTH	28 EAST, N.M.P.M.		1700'	NORTH	330'	WEST	EDDY

Dedicated Acres	40	Joint or Infill	Consolidation Code	Order No.
-----------------	----	-----------------	--------------------	-----------

No allowable will be assigned to this completion until all interests have been consolidated or a non-standard unit has been approved by the division.



OPERATOR CERTIFICATION

I hereby certify that the information contained herein is true and complete to the best of my knowledge and belief, and that this organization either owns a working interest or unleased mineral interest in the land including the proposed bottom hole location or has a right to drill this well at this location pursuant to a contract with an owner of such a mineral or working interest, or as a voluntary pooling agreement or a compulsory pooling order heretofore entered by the division.

Signature: Jennifer Duarte
Date: 12/11/13
Printed Name: Jennifer Duarte
E-mail Address: jennifer.duarte@oxy.com

SURVEYOR CERTIFICATION

I hereby certify that the well location shown on this plat was plotted from field notes of actual surveys made by me or under my supervision, and that the same is true and correct to the best of my belief.

Date of Survey: SEPTEMBER 22, 2013

Signature and Seal of Professional Surveyor: Terry J. Asch
Certificate Number: 15079

Professional Surveyor Seal: TERRY J. ASCH, 15079, PROFESSIONAL LAND SURVEYOR

WO# 130922WL (KA)

District I
 1625 N. French Dr., Hobbs, NM 88240
 Phone:(575) 393-6161 Fax:(575) 393-0720

District II
 811 S. First St., Artesia, NM 88210
 Phone:(575) 748-1283 Fax:(575) 748-9720

District III
 1000 Rio Brazos Rd., Aztec, NM 87410
 Phone:(505) 334-6178 Fax:(505) 334-6170

District IV
 1220 S. St Francis Dr., Santa Fe, NM 87505
 Phone:(505) 476-3470 Fax:(505) 476-3462

State of New Mexico
Energy, Minerals and Natural Resources
Oil Conservation Division
1220 S. St Francis Dr.
Santa Fe, NM 87505

Permit 178344

PERMIT COMMENTS

Operator Name and Address: OXY USA WTP LIMITED PARTNERSHIP [192463] PO Box 4294 Houston, TX 77210	API Number: 30-015-41857
	Well: STATE CV COM #002H

Created By	Comment	Comment Date
CSHAPARD	Land s/S	12/11/2013

District I
1625 N. French Dr., Hobbs, NM 88240
Phone:(575) 393-6161 Fax:(575) 393-0720

District II
811 S. First St., Artesia, NM 88210
Phone:(575) 748-1283 Fax:(575) 748-9720

District III
1000 Rio Brazos Rd., Aztec, NM 87410
Phone:(505) 334-6178 Fax:(505) 334-6170

District IV
1220 S. St Francis Dr., Santa Fe, NM 87505
Phone:(505) 476-3470 Fax:(505) 476-3462

State of New Mexico
Energy, Minerals and Natural Resources
Oil Conservation Division
1220 S. St Francis Dr.
Santa Fe, NM 87505

PERMIT CONDITIONS OF APPROVAL

Operator Name and Address: OXY USA WTP LIMITED PARTNERSHIP [192463] PO Box 4294 Houston, TX 77210	API Number: 30-015-41857
	Well: STATE CV COM #002H

OCD Reviewer	Condition
CSHAPARD	Once the well is spud, to prevent ground water contamination through whole or partial conduits from the surface, the operator shall drill without interruption through the fresh water zone or zones and shall immediately set in cement the water protection string