

District I
1625 N. French Dr., Hobbs, NM 88240
Phone:(575) 393-8161 Fax:(575) 393-0720

District II
811 S. First St., Artesia, NM 88210
Phone:(575) 748-1283 Fax:(575) 748-9720

District III
1000 Rio Brazos Rd., Aztec, NM 87410
Phone:(505) 334-6178 Fax:(505) 334-6170

District IV
1220 S. St Francis Dr., Santa Fe, NM 87505
Phone:(505) 476-3470 Fax:(505) 476-3462

State of New Mexico
Energy, Minerals and Natural Resources
Oil Conservation Division
1220 S. St Francis Dr.
Santa Fe, NM 87505

Form C-101
August 1, 2011
Permit 184606

APPLICATION FOR PERMIT TO DRILL, RE-ENTER, DEEPEN, PLUGBACK, OR ADD A ZONE

1. Operator Name and Address APACHE CORP 303 Veterans Airpark Lane Midland, TX 79705		2. OGRID Number 873
4. Property Code 306616		3. API Number 30-025-41781
5. Property Name MCDONALD STATE AC 2		6. Well No. 037

7. Surface Location

UL - Lot	Section	Township	Range	Lot Idn	Feet From	N/S Line	Feet From	E/W Line	County
A	13	22S	36E		990	N	990	E	Lea

8. Proposed Bottom Hole Location

UL - Lot	Section	Township	Range	Lot Idn	Feet From	N/S Line	Feet From	E/W Line	County
A	13	22S	36E	A	990	N	990	E	Lea

9. Pool Information

WANTZ/ABO	62700
-----------	-------

Additional Well Information

11. Work Type New Well	12. Well Type OIL	13. Cable/Rotary	14. Lease Type State	15. Ground Level Elevation 3457
16. Multiple N	17. Proposed Depth 7600	18. Formation Abo	19. Contractor	20. Spud Date
Depth to Ground water		Distance from nearest fresh water well		Distance to nearest surface water

☒ We will be using a closed-loop system in lieu of lined pits

21. Proposed Casing and Cement Program

Type	Hole Size	Casing Size	Casing Weight/ft	Setting Depth	Sacks of Cement	Estimated TOC
Surf	11	8.625	24	1203	420	0
Prod	7.875	5.5	17	7600	1040	0

Casing/Cement Program: Additional Comments

--

22. Proposed Blowout Prevention Program

Type	Working Pressure	Test Pressure	Manufacturer
Hydril	3000	2000	

23. I hereby certify that the information given above is true and complete to the best of my knowledge and belief. I further certify I have complied with 19.15.14.9 (A) NMAC <input checked="" type="checkbox"/> and/or 19.15.14.9 (B) NMAC <input checked="" type="checkbox"/> , if applicable. Signature: _____ Printed Name: Bobby Smith Title: _____ Email Address: bobby.smith@apachecorp.com Date: 4/14/2014	OIL CONSERVATION DIVISION Approved By: Paul Kautz Title: Geologist Approved Date: 4/15/2014 Expiration Date: 4/15/2016 Conditions of Approval Attached
Phone: 432-818-1020	

DISTRICT I
1625 N. French Dr., Hobbs, NM 88240
Phone: (575) 393-6161 Fax: (575) 393-0720
DISTRICT II
811 S. First St., Artesia, NM 88210
Phone: (575) 748-1283 Fax: (575) 748-9720
DISTRICT III
1000 Rio Brazos Road, Aztec, NM 87410
Phone: (505) 334-6178 Fax: (505) 334-6170
DISTRICT IV
1220 S. St. Francis Dr., Santa Fe, NM 87505
Phone: (505) 476-3460 Fax: (505) 476-3462

State of New Mexico
Energy, Minerals & Natural Resources Department
OIL CONSERVATION DIVISION
1220 South St. Francis Dr.
Santa Fe, New Mexico 87505

Form C-102
Revised August 1, 2011
Submit one copy to appropriate
District Office

☐ AMENDED REPORT

WELL LOCATION AND ACREAGE DEDICATION PLAT

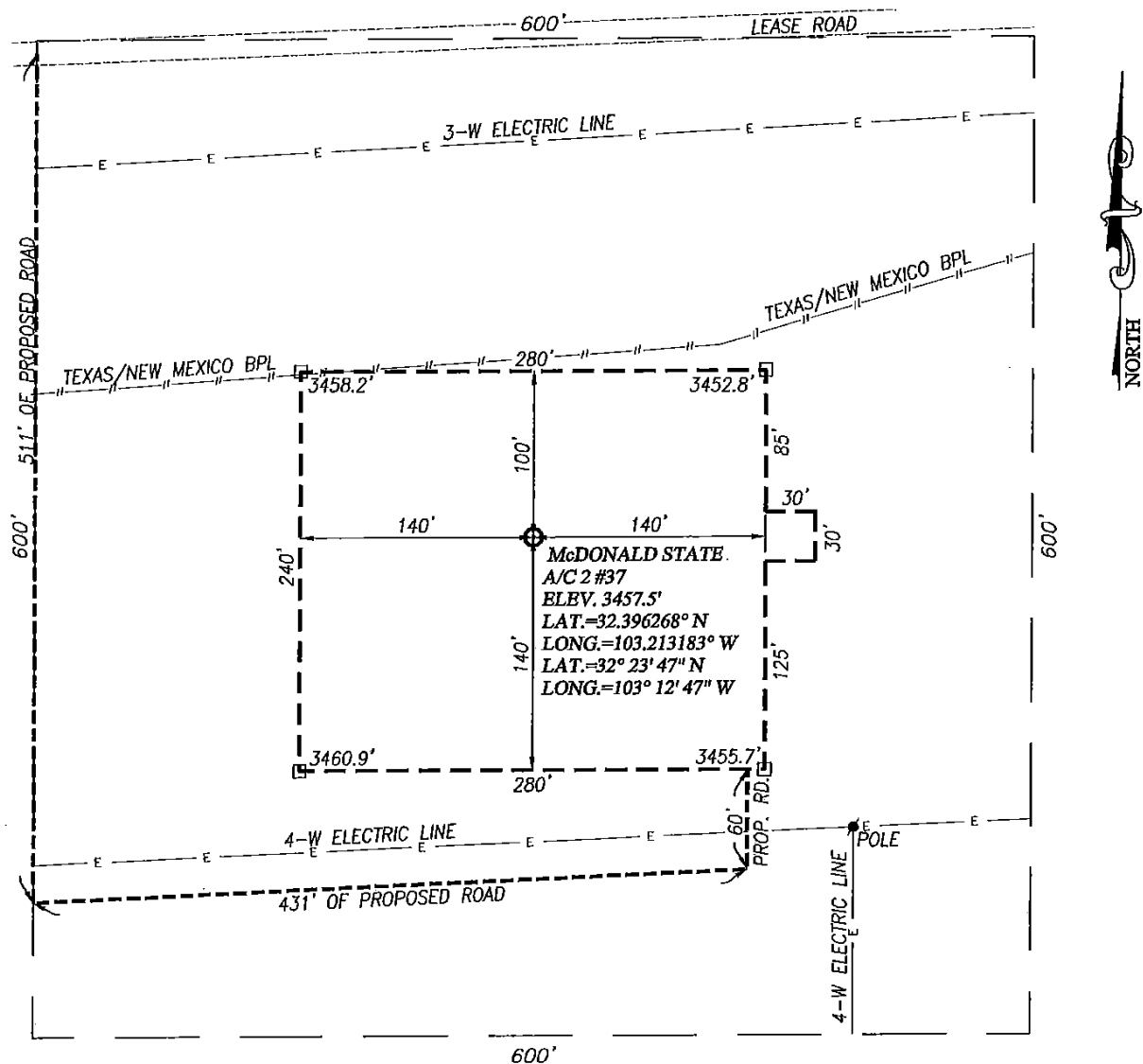
API Number 30-025-	Pool Code 22900	Pool Name Eunice, BLI - TU - DR
Property Code	Property Name McDONALD STATE A/C 2	Well Number 37
OGRID No. 873	Operator Name APACHE CORPORATION	Elevation 3457'

Surface Location									
UL or lot No.	Section	Township	Range	Lot Idn	Feet from the	North/South line	Feet from the	East/West line	County
A	13	22-S	36-E		990	NORTH	990	EAST	LEA

Bottom Hole Location If Different From Surface									
UL or lot No.	Section	Township	Range	Lot Idn	Feet from the	North/South line	Feet from the	East/West line	County
Dedicated Acres 40		Joint or Infill		Consolidation Code		Order No.			

NO ALLOWABLE WILL BE ASSIGNED TO THIS COMPLETION UNTIL ALL INTERESTS HAVE BEEN CONSOLIDATED OR A NON-STANDARD UNIT HAS BEEN APPROVED BY THE DIVISION

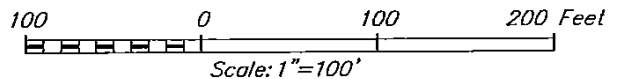
	<p>OPERATOR CERTIFICATION</p> <p>I hereby certify that the information herein is true and complete to the best of my knowledge and belief, and that this organization either owns a working interest or unleased mineral interest in the land including the proposed bottom hole location or has a right to drill this well at this location pursuant to a contract with an owner of such mineral or working interest, or to a voluntary pooling agreement or a compulsory pooling order heretofore entered by the division.</p> <p><i>Mitchell Cooper</i> 4-19-14 Signature Date</p> <p><i>Mitchell Cooper</i> Printed Name</p> <p><i>mitchelle.cooper@apachecorp.com</i> E-mail Address</p>	
	<p>SURVEYOR CERTIFICATION</p> <p>I hereby certify that the well location shown on this plat was plotted from field notes of actual surveys made by me or under my supervision, and that the same is true and correct to the best of my belief.</p> <p>MARCH 21, 2014 Date of Survey</p> <p><i>Ronald J. Eidson</i> Signature of Professional Surveyor</p> <p> Certificate Number 12641 Ronald J. Eidson 3239</p> <p>DSS JWSC W.O.: 14.11.0285</p>	
	<p>GEODETTIC COORDINATES NAD 27 NME</p> <p>SURFACE LOCATION Y=509688.0 N X=845748.5 E</p> <p>LAT.=32.396268° N LONG.=103.213183° W</p> <p>LAT.=32° 23' 47" N LONG.=103° 12' 47" W</p>	



NOTE:
1) SEE "LOCATION VERIFICATION MAP"
FOR PROPOSED ROAD LOCATION.

DIRECTIONS TO McDONALD STATE A/C 2 #37:

FROM THE INTERSECTION OF ST. HWY. #207 AND CO. RD. #E21 (DELAWARE BASIN ROAD), GO WEST ON DELAWARE BASIN ROAD APPROX. 3.0 MILES. TURN LEFT AND GO SOUTH APPROX. 0.2 MILES. TURN RIGHT AND GO WEST APPROX. 0.3 MILES. TURN LEFT AND FOLLOW PROPOSED ROAD SURVEY STAKES SOUTH APPROX. 511 FEET, THEN NORTHEAST APPROX. 431 FEET, THEN NORTH APPROX. 60 FEET TO THIS LOCATION.



APACHE CORPORATION

McDONALD STATE A/C 2 #37 WELL
LOCATED 990 FEET FROM THE NORTH LINE
AND 990 FEET FROM THE EAST LINE OF SECTION 13,
TOWNSHIP 22 SOUTH, RANGE 36 EAST, N.M.P.M.,
LEA COUNTY, NEW MEXICO



PROVIDING SURVEYING SERVICES
SINCE 1946
JOHN WEST SURVEYING COMPANY
412 N. DAL PASO HOBBS, N.M. 88240
(575) 393-3117 www.jwsc.biz
TBPLS# 10021000

Survey Date: 3/21/14	CAD Date: 4/4/14	Drawn By: DSS
W.O. No.: 14110285	Rev: .	Rel. W.O.: Sheet 1 of 1

District I
1625 N. French Dr., Hobbs, NM 88240
Phone:(575) 393-8181 Fax:(575) 393-0720
District II
811 S. First St., Artesia, NM 88210
Phone:(575) 748-1283 Fax:(575) 748-9720
District III
1000 Rio Brazos Rd., Aztec, NM 87410
Phone:(505) 334-8178 Fax:(505) 334-8170
District IV
1220 S. St Francis Dr., Santa Fe, NM 87505
Phone:(505) 476-3470 Fax:(505) 476-3462

State of New Mexico
Energy, Minerals and Natural Resources
Oil Conservation Division
1220 S. St Francis Dr.
Santa Fe, NM 87505

Form APD Comments

Permit 184606

PERMIT COMMENTS

Operator Name and Address: APACHE CORP [873] 303 Veterans Airpark Lane Midland, TX 79705		API Number: 30-025-41781
		Well: MCDONALD STATE AC 2 #037
Created By	Comment	Comment Date
pkautz	Land s/S	4/15/2014

District I
1625 N. French Dr., Hobbs, NM 88240
Phone:(575) 393-8161 Fax:(575) 393-0720
District II
811 S. First St., Artesia, NM 88210
Phone:(575) 748-1283 Fax:(575) 748-9720
District III
1000 Rio Brazos Rd., Aztec, NM 87410
Phone:(505) 334-6178 Fax:(505) 334-6170
District IV
1220 S. St Francis Dr., Santa Fe, NM 87505
Phone:(505) 476-3470 Fax:(505) 476-3462

State of New Mexico
Energy, Minerals and Natural Resources
Oil Conservation Division
1220 S. St Francis Dr.
Santa Fe, NM 87505

Form APD Conditions

Permit 184606

PERMIT CONDITIONS OF APPROVAL

Operator Name and Address: APACHE CORP [873] 303 Veterans Airpark Lane Midland, TX 79705	API Number: 30-025-41781
	Well: MCDONALD STATE AC 2 #037

OCD Reviewer	Condition
pkautz	Once the well is spud, to prevent ground water contamination through whole or partial conduits from the surface, the operator shall drill without interruption through the fresh water zone or zones and shall immediately set in cement the water protection string
pkautz	SURFACE & PRODUCTION CASING - Cement must circulate to surface
pkautz	Surface casing must be set 25' below top of Rustler Anhydrite in order to seal off protectable water