

District I
1625 N. French Dr., Hobbs, NM 88240
Phone:(575) 393-8161 Fax:(575) 393-0720

District II
811 S. First St., Artesia, NM 88210
Phone:(575) 748-1283 Fax:(575) 748-9720

District III
1000 Rio Brazos Rd., Aztec, NM 87410
Phone:(505) 334-6178 Fax:(505) 334-6170

District IV
1220 S. St Francis Dr., Santa Fe, NM 87505
Phone:(505) 476-3470 Fax:(505) 476-3462

State of New Mexico
Energy, Minerals and Natural Resources
Oil Conservation Division
1220 S. St Francis Dr.
Santa Fe, NM 87505

Form C-101
August 1, 2011
Permit 186633

APPLICATION FOR PERMIT TO DRILL, RE-ENTER, DEEPEN, PLUGBACK, OR ADD A ZONE

| | | |
|---|--|-------------------------------|
| 1. Operator Name and Address APACHE CORP 303 Veterans Airpark Lane Midland, TX 79705 | | 2. OGRID Number 873 |
| 4. Property Code 39779 | | 3. API Number 30-025-41865 |
| 5. Property Name PINOT | | 6. Well No. 003 |

7. Surface Location

| | | | | | | | | | | | | | | | | | | | |
|----------|---|---------|---|----------|-----|-------|-----|---------|--|-----------|------|----------|---|-----------|------|----------|---|--------|-----|
| UL - Lot | F | Section | 2 | Township | 20S | Range | 38E | Lot Idn | | Feet From | 1650 | N/S Line | N | Feet From | 2310 | E/W Line | W | County | Lea |
|----------|---|---------|---|----------|-----|-------|-----|---------|--|-----------|------|----------|---|-----------|------|----------|---|--------|-----|

8. Proposed Bottom Hole Location

| | | | | | | | | | | | | | | | | | | | |
|----------|---|---------|---|----------|-----|-------|-----|---------|---|-----------|------|----------|---|-----------|------|----------|---|--------|-----|
| UL - Lot | F | Section | 2 | Township | 20S | Range | 38E | Lot Idn | F | Feet From | 1650 | N/S Line | N | Feet From | 2310 | E/W Line | W | County | Lea |
|----------|---|---------|---|----------|-----|-------|-----|---------|---|-----------|------|----------|---|-----------|------|----------|---|--------|-----|

9. Pool Information

| | |
|----------------|-------|
| HOUSE;BLINEBRY | 33230 |
| HOUSE;TUBB | 78760 |
| HOUSE;DRINKARD | 33250 |
| HOUSE;ABO | 33210 |

Additional Well Information

| | | | | |
|---------------------------|----------------------------|--|---------------------------|------------------------------------|
| 11. Work Type New Well | 12. Well Type OIL | 13. Cable/Rotary | 14. Lease Type Private | 15. Ground Level Elevation 3577 |
| 16. Multiple Y | 17. Proposed Depth 8000 | 18. Formation Abo | 19. Contractor | 20. Spud Date |
| Depth to Ground water | | Distance from nearest fresh water well | | Distance to nearest surface water |

☒ We will be using a closed-loop system in lieu of lined pits

21. Proposed Casing and Cement Program

| Type | Hole Size | Casing Size | Casing Weight/ft | Setting Depth | Sacks of Cement | Estimated TOC |
|------|-----------|-------------|------------------|---------------|-----------------|---------------|
| Surf | 11 | 8.625 | 24 | 1620 | 535 | 0 |
| Prod | 7.875 | 5.5 | 17 | 8000 | 1050 | 0 |

Casing/Cement Program: Additional Comments

| |
|--|
| |
|--|

22. Proposed Blowout Prevention Program

| | | | |
|--------|------------------|---------------|--------------|
| Type | Working Pressure | Test Pressure | Manufacturer |
| Hydril | 3000 | 2000 | |

| | |
|--|--|
| 23. I hereby certify that the information given above is true and complete to the best of my knowledge and belief. I further certify I have complied with 19.15.14.9 (A) NMAC <input checked="" type="checkbox"/> and/or 19.15.14.9 (B) NMAC <input checked="" type="checkbox"/> , if applicable. Signature: | OIL CONSERVATION DIVISION |
| Printed Name: Electronically filed by Bobby Smith | Approved By: Paul Kautz |
| Title: | Title: Geologist |
| Email Address: bobby.smith@apachecorp.com | Approved Date: 5/28/2014 Expiration Date: 5/28/2016 |
| Date: 5/22/2014 Phone: 432-818-1020 | Conditions of Approval Attached |

DISTRICT I
1625 N. French Dr., Hobbs, NM 88240
Phone: (575) 393-6161 Fax: (575) 393-0720
DISTRICT II
811 S. First St., Artesia, NM 88210
Phone: (505) 748-1283 Fax: (575) 748-9720
DISTRICT III
1000 Rio Brazos Road, Aztec, NM 87410
Phone: (505) 334-6178 Fax: (505) 334-6170
DISTRICT IV
1220 S. St. Francis Dr., Santa Fe, NM 87505
Phone: (505) 476-3460 Fax: (505) 476-3462

State of New Mexico
Energy, Minerals & Natural Resources Department
OIL CONSERVATION DIVISION
1220 South St. Francis Dr.
Santa Fe, New Mexico 87505

Form C-102
Revised August 1, 2011
Submit one copy to appropriate
District Office

□ AMENDED REPORT

WELL LOCATION AND ACREAGE DEDICATION PLAT

| | | |
|-------------------------------|--|--|
| API Number 30-025- | Pool Code 33210 33250 | House; House; Pool Name Blinbry, Tubb, Driakare, ABO |
| Property Code 39779 | Property Name PINOT | |
| OGRID No. 873 | Operator Name APACHE CORPORATION | |
| | Well Number 3 | Elevation 3577' |

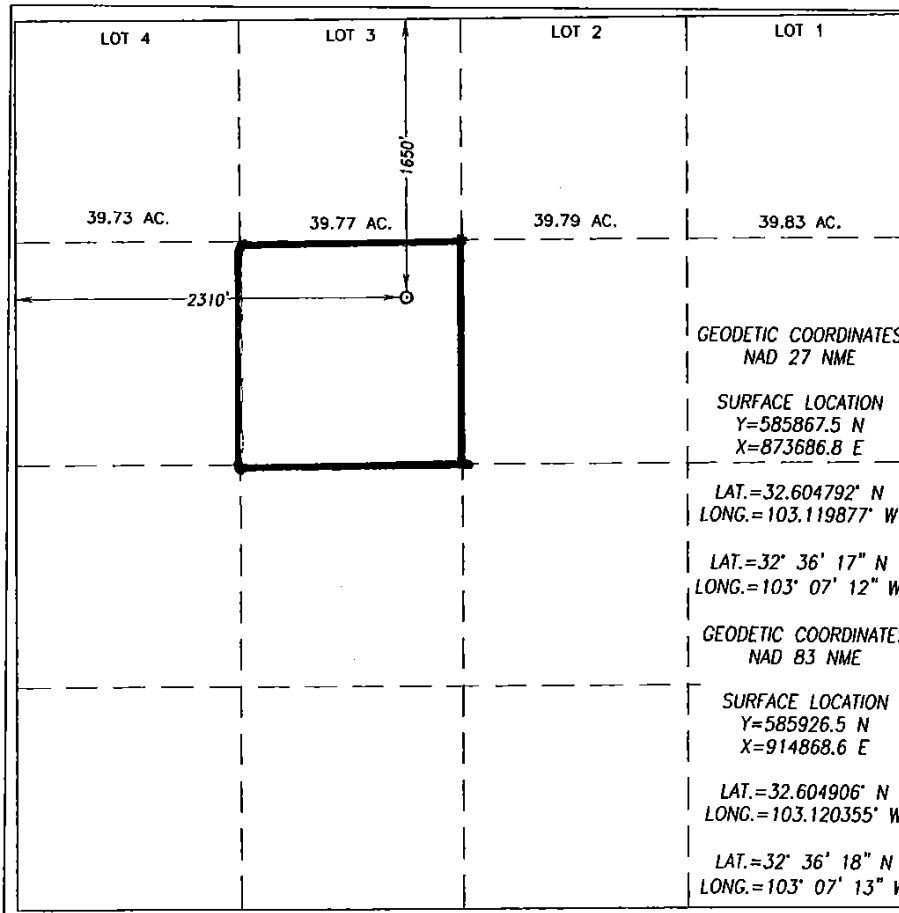
Surface Location

| | | | | | | | | | |
|---------------------------|---------------------|-------------------------|----------------------|---------|------------------------------|----------------------------------|------------------------------|-------------------------------|----------------------|
| UL or lot No. F | Section 2 | Township 20-S | Range 38-E | Lot Idn | Feet from the 1650 | North/South line NORTH | Feet from the 2310 | East/West line WEST | County LEA |
|---------------------------|---------------------|-------------------------|----------------------|---------|------------------------------|----------------------------------|------------------------------|-------------------------------|----------------------|

Bottom Hole Location If Different From Surface

| | | | | | | | | | |
|------------------------------|-----------------|--------------------|-----------|---------|---------------|------------------|---------------|----------------|--------|
| UL or lot No. | Section | Township | Range | Lot Idn | Feet from the | North/South line | Feet from the | East/West line | County |
| Dedicated Acres 40 | Joint or Infill | Consolidation Code | Order No. | | | | | | |

NO ALLOWABLE WILL BE ASSIGNED TO THIS COMPLETION UNTIL ALL INTERESTS HAVE BEEN CONSOLIDATED OR A NON-STANDARD UNIT HAS BEEN APPROVED BY THE DIVISION



OPERATOR CERTIFICATION

I hereby certify that the information herein is true and complete to the best of my knowledge and belief, and that this organization either owns a working interest or unleased mineral interest in the land including the proposed bottom hole location or has a right to drill this well at this location pursuant to a contract with an owner of such mineral or working interest, or to a voluntary pooling agreement or a compulsory pooling order heretofore entered by the division.

Michelle Cooper 5-22-14
Signature Date

Michelle Cooper
Printed Name

michelle.cooper@apachecorp.com
E-mail Address

SURVEYOR CERTIFICATION

I hereby certify that the well location shown on this plat was plotted from field notes of actual surveys made by me or under my supervision, and that the same is true and correct to the best of my belief.

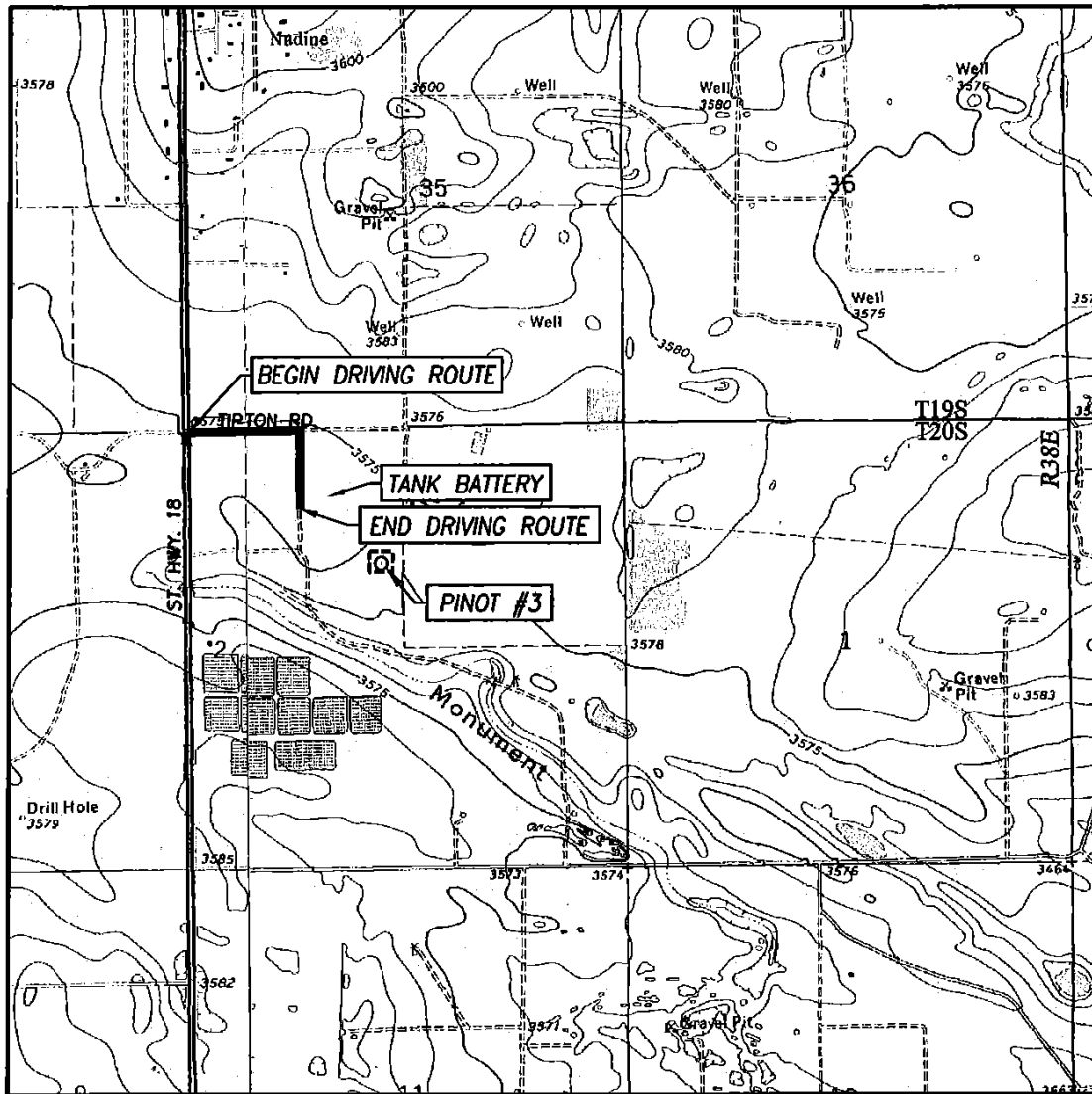
APRIL 18, 2014

Date of Survey
Signature of Registered Professional Surveyor:

Ronald J. Eidson
3239
Certificate Number 3239
Ronald J. Eidson 12641

ACK JWSC W.O.: 14.11.0397

LOCATION VERIFICATION MAP



SCALE: 1" = 2000'

CONTOUR INTERVAL:
HOBBS SE, N.M. - 10'
HOBBS SW, N.M. - 10'

SEC. 2 TWP. 20-S RGE. 38-E

SURVEY N.M.P.M.

COUNTY LEA STATE NEW MEXICO

DESCRIPTION 1650' FNL & 2310' FWL

ELEVATION 3577'

OPERATOR APACHE CORPORATION

LEASE PINOT

U.S.G.S. TOPOGRAPHIC MAP
HOBBS SE, N.M.

DIRECTIONS TO PINOT #3:

FROM THE INTERSECTION OF ST. HIGHWAY 18 AND TIPTON ROAD, GO EAST ON TIPTON ROAD FOR APPROX. 0.3 MILES. TURN RIGHT AND GO SOUTH AT LEASE ROAD APPROX. 0.1 MILE TO EXISTING BATTERY TANK. THE LOCATION IS SOUTHEAST APPROX. 900 FEET.



PROVIDING SURVEYING SERVICES
SINCE 1946
JOHN WEST SURVEYING COMPANY
412 N. DAL PASO HOBBS, N.M. 88240
(575) 393-3117 www.jwsc.biz
TBPLS# 10021000

DISTRICT I
1625 N. French Dr., Hobbs, NM 88240
Phone: (575) 393-6161 Fax: (575) 393-0720

DISTRICT II
811 S. First St., Artesia, NM 88210
Phone: (505) 748-1283 Fax: (505) 748-9720

DISTRICT III
1000 Rio Brazos Road, Aztec, NM 87410
Phone: (505) 334-6178 Fax: (505) 334-6170

DISTRICT IV
1220 S. St. Francis Dr., Santa Fe, NM 87505
Phone: (505) 476-3460 Fax: (505) 476-3462

State of New Mexico
Energy, Minerals & Natural Resources Department
OIL CONSERVATION DIVISION
1220 South St. Francis Dr.
Santa Fe, New Mexico 87505

Form C-102
Revised August 1, 2011
Submit one copy to appropriate
District Office

□ AMENDED REPORT

WELL LOCATION AND ACREAGE DEDICATION PLAT

| | | |
|-------------------------------|--|--|
| API Number 30-025- | Pool Code 33210 33250 | House; House; Pool Name Blinbry, Tubb, Driakard, ABO |
| Property Code 39779 | Property Name PINOT | |
| OGRID No. 873 | Operator Name APACHE CORPORATION | |
| | Well Number 3 | Elevation 3577' |

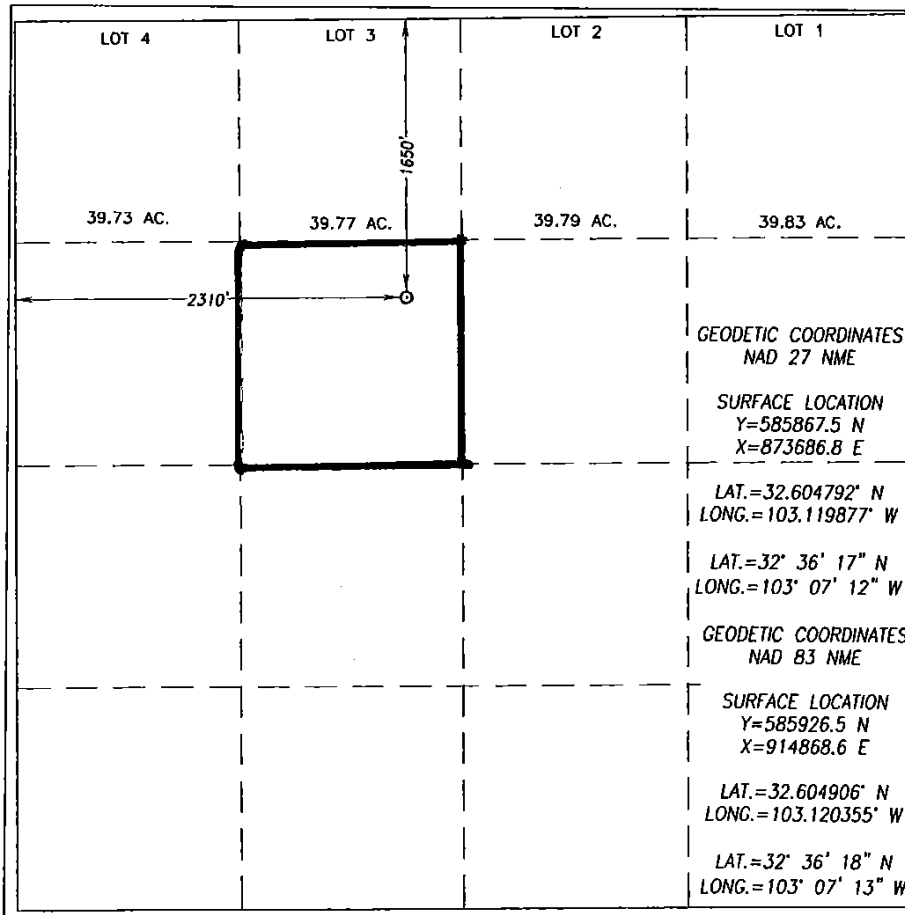
Surface Location

| | | | | | | | | | |
|---------------------------|---------------------|-------------------------|----------------------|---------|------------------------------|----------------------------------|------------------------------|-------------------------------|----------------------|
| UL or lot No. F | Section 2 | Township 20-S | Range 38-E | Lot Idn | Feet from the 1650 | North/South line NORTH | Feet from the 2310 | East/West line WEST | County LEA |
|---------------------------|---------------------|-------------------------|----------------------|---------|------------------------------|----------------------------------|------------------------------|-------------------------------|----------------------|

Bottom Hole Location If Different From Surface

| | | | | | | | | | |
|------------------------------|-----------------|--------------------|-----------|---------|---------------|------------------|---------------|----------------|--------|
| UL or lot No. | Section | Township | Range | Lot Idn | Feet from the | North/South line | Feet from the | East/West line | County |
| Dedicated Acres 40 | Joint or Infill | Consolidation Code | Order No. | | | | | | |

NO ALLOWABLE WILL BE ASSIGNED TO THIS COMPLETION UNTIL ALL INTERESTS HAVE BEEN CONSOLIDATED OR A NON-STANDARD UNIT HAS BEEN APPROVED BY THE DIVISION



OPERATOR CERTIFICATION

I hereby certify that the information herein is true and complete to the best of my knowledge and belief, and that this organization either owns a working interest or unleased mineral interest in the land including the proposed bottom hole location or has a right to drill this well at this location pursuant to a contract with an owner of such mineral or working interest, or to a voluntary pooling agreement or a compulsory pooling order heretofore entered by the division.

Michelle Cooper 5-22-14
Signature Date

Michelle Cooper
Printed Name

michelle.cooper@apachecorp.com
E-mail Address

SURVEYOR CERTIFICATION

I hereby certify that the well location shown on this plat was plotted from field notes of actual surveys made by me or under my supervision, and that the same is true and correct to the best of my belief.

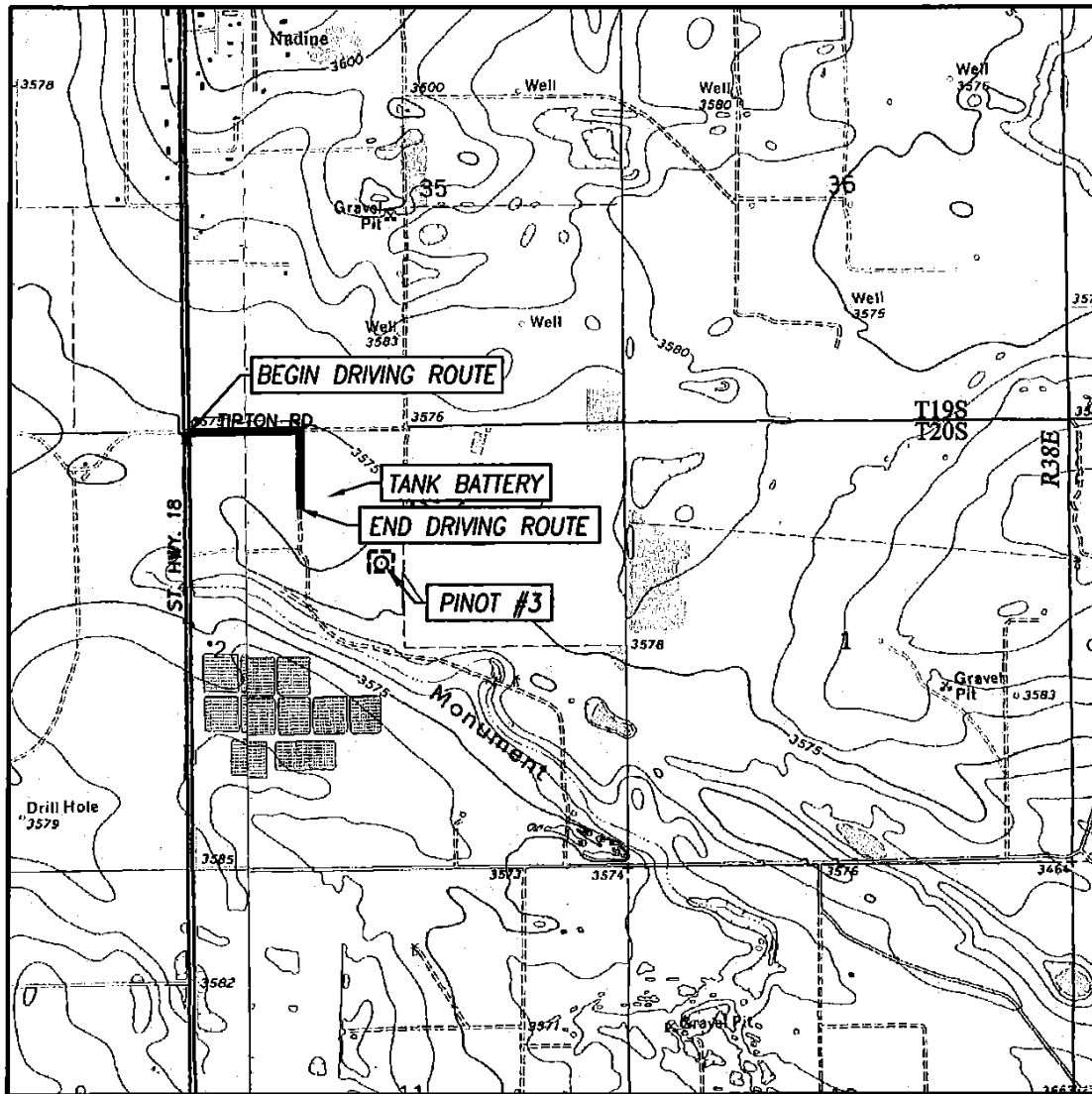
APRIL 18, 2014

Date of Survey
Signature of Registered Professional Surveyor:

Ronald J. Eidson
3239
Certificate Number 12641
J. Eidson 3239

ACK JWSC W.O.: 14.11.0397

LOCATION VERIFICATION MAP



SCALE: 1" = 2000'

CONTOUR INTERVAL:
HOBBS SE, N.M. - 10'
HOBBS SW, N.M. - 10'

SEC. 2 TWP. 20-S RGE. 38-E

SURVEY N.M.P.M.

COUNTY LEA STATE NEW MEXICO

DESCRIPTION 1650' FNL & 2310' FWL

ELEVATION 3577'

OPERATOR APACHE CORPORATION

LEASE PINOT

U.S.G.S. TOPOGRAPHIC MAP
HOBBS SE, N.M.

DIRECTIONS TO PINOT #3:

FROM THE INTERSECTION OF ST. HIGHWAY 18 AND TIPTON ROAD, GO EAST ON TIPTON ROAD FOR APPROX. 0.3 MILES. TURN RIGHT AND GO SOUTH AT LEASE ROAD APPROX. 0.1 MILE TO EXISTING BATTERY TANK. THE LOCATION IS SOUTHEAST APPROX. 900 FEET.



PROVIDING SURVEYING SERVICES
SINCE 1946
JOHN WEST SURVEYING COMPANY
412 N. DAL PASO HOBBS, N.M. 88240
(575) 393-3117 www.jwsc.biz
TBPLS# 10021000

DISTRICT I
1625 N. French Dr., Hobbs, NM 88240
Phone: (575) 393-6161 Fax: (575) 393-0720
DISTRICT II
811 S. First St., Artesia, NM 88210
Phone: (505) 748-1283 Fax: (575) 748-9720
DISTRICT III
1000 Rio Brazos Road, Aztec, NM 87410
Phone: (505) 334-6178 Fax: (505) 334-6170
DISTRICT IV
1220 S. St. Francis Dr., Santa Fe, NM 87505
Phone: (505) 476-3460 Fax: (505) 476-3462

State of New Mexico
Energy, Minerals & Natural Resources Department
OIL CONSERVATION DIVISION
1220 South St. Francis Dr.
Santa Fe, New Mexico 87505

Form C-102
Revised August 1, 2011
Submit one copy to appropriate
District Office

DAMENDED REPORT

WELL LOCATION AND ACREAGE DEDICATION PLAT

| | | |
|-------------------------------|--|--|
| API Number 30-025- | Pool Code 33210 33250 | House; House; Pool Name Blinbry, Tubb, Driakard, ABO |
| Property Code 39779 | Property Name PINOT | Well Number 3 |
| OGRID No. 873 | Operator Name APACHE CORPORATION | Elevation 3577' |

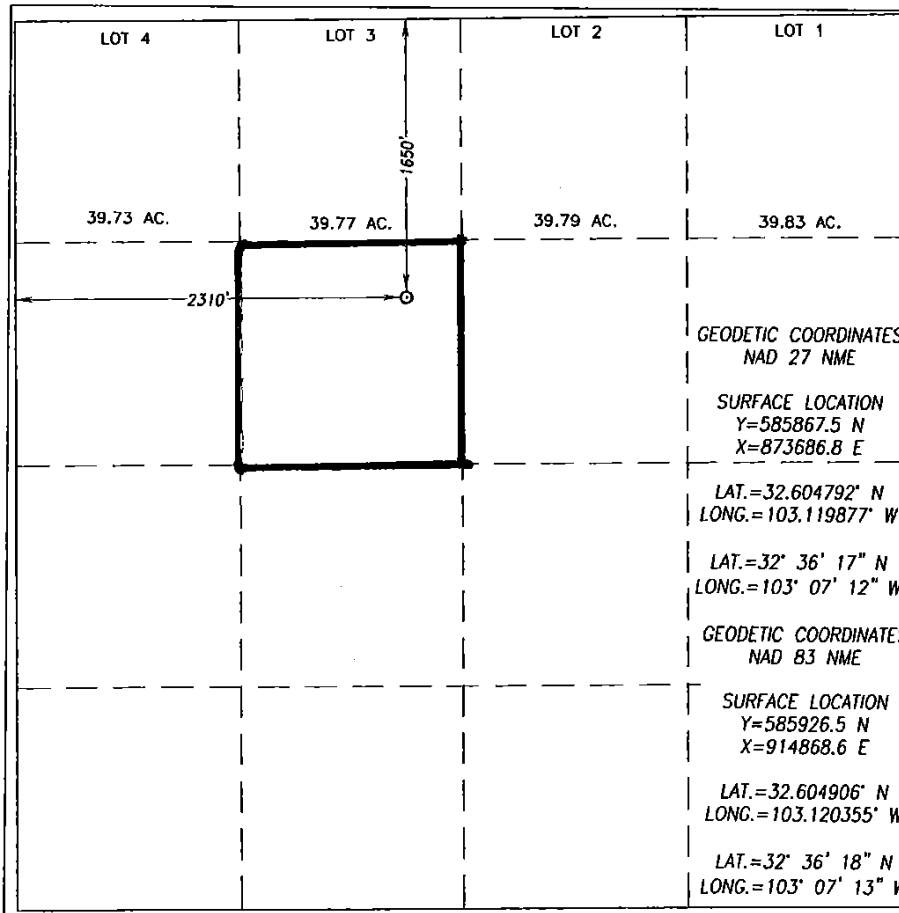
Surface Location

| | | | | | | | | | |
|---------------------------|---------------------|-------------------------|----------------------|---------|------------------------------|----------------------------------|------------------------------|-------------------------------|----------------------|
| UL or lot No. F | Section 2 | Township 20-S | Range 38-E | Lot Idn | Feet from the 1650 | North/South line NORTH | Feet from the 2310 | East/West line WEST | County LEA |
|---------------------------|---------------------|-------------------------|----------------------|---------|------------------------------|----------------------------------|------------------------------|-------------------------------|----------------------|

Bottom Hole Location If Different From Surface

| | | | | | | | | | |
|------------------------------|-----------------|--------------------|-----------|---------|---------------|------------------|---------------|----------------|--------|
| UL or lot No. | Section | Township | Range | Lot Idn | Feet from the | North/South line | Feet from the | East/West line | County |
| Dedicated Acres 40 | Joint or Infill | Consolidation Code | Order No. | | | | | | |

NO ALLOWABLE WILL BE ASSIGNED TO THIS COMPLETION UNTIL ALL INTERESTS HAVE BEEN CONSOLIDATED OR A NON-STANDARD UNIT HAS BEEN APPROVED BY THE DIVISION



OPERATOR CERTIFICATION

I hereby certify that the information herein is true and complete to the best of my knowledge and belief, and that this organization either owns a working interest or unleased mineral interest in the land including the proposed bottom hole location or has a right to drill this well at this location pursuant to a contract with an owner of such mineral or working interest, or to a voluntary pooling agreement or a compulsory pooling order heretofore entered by the division.

Michelle Cooper 5-22-14
Signature Date

Michelle Cooper
Printed Name

michelle.cooper@apachecorp.com
E-mail Address

SURVEYOR CERTIFICATION

I hereby certify that the well location shown on this plat was plotted from field notes of actual surveys made by me or under my supervision, and that the same is true and correct to the best of my belief.

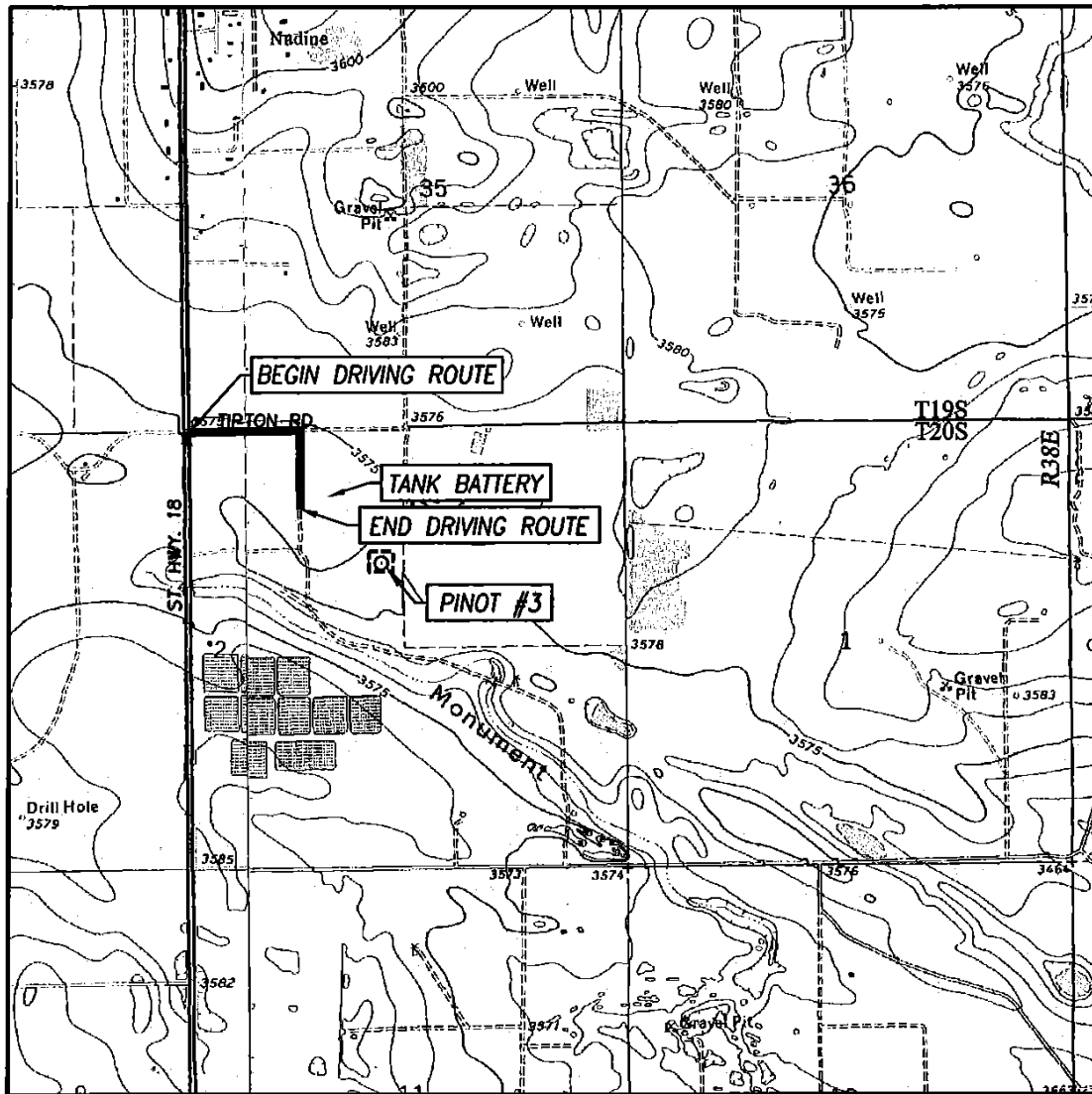
APRIL 18, 2014

Date of Survey
Signature of Registered Professional Surveyor:

Ronald J. Eidson
3239
Certificate Number 3239
Ronald J. Eidson 12641

ACK JWSC W.O.: 14.11.0397

LOCATION VERIFICATION MAP



SCALE: 1" = 2000'

CONTOUR INTERVAL:
HOBBS SE, N.M. - 10'
HOBBS SW, N.M. - 10'

SEC. 2 TWP. 20-S RGE. 38-E

SURVEY N.M.P.M.

COUNTY LEA STATE NEW MEXICO

DESCRIPTION 1650' FNL & 2310' FWL

ELEVATION 3577'

OPERATOR APACHE CORPORATION

LEASE PINOT

U.S.G.S. TOPOGRAPHIC MAP
HOBBS SE, N.M.

DIRECTIONS TO PINOT #3:

FROM THE INTERSECTION OF ST. HIGHWAY 18 AND TIPTON ROAD, GO EAST ON TIPTON ROAD FOR APPROX. 0.3 MILES. TURN RIGHT AND GO SOUTH AT LEASE ROAD APPROX. 0.1 MILE TO EXISTING BATTERY TANK. THE LOCATION IS SOUTHEAST APPROX. 900 FEET.



PROVIDING SURVEYING SERVICES
SINCE 1946
JOHN WEST SURVEYING COMPANY
412 N. DAL PASO HOBBS, N.M. 88240
(575) 393-3117 www.jwsc.biz
TBPLS# 10021000

DISTRICT I
1625 N. French Dr., Hobbs, NM 88240
Phone: (575) 393-6161 Fax: (575) 393-0720
DISTRICT II
811 S. First St., Artesia, NM 88210
Phone: (505) 748-1283 Fax: (575) 748-9720
DISTRICT III
1000 Rio Brazos Road, Aztec, NM 87410
Phone: (505) 334-6178 Fax: (505) 334-6170
DISTRICT IV
1220 S. St. Francis Dr., Santa Fe, NM 87505
Phone: (505) 476-3460 Fax: (505) 476-3462

State of New Mexico
Energy, Minerals & Natural Resources Department
OIL CONSERVATION DIVISION
1220 South St. Francis Dr.
Santa Fe, New Mexico 87505

Form C-102
Revised August 1, 2011
Submit one copy to appropriate
District Office

□ AMENDED REPORT

WELL LOCATION AND ACREAGE DEDICATION PLAT

| | | |
|-------------------------------|--|--|
| API Number 30-025- | Pool Code 33210 33250 | House; House; Pool Name Blinbry, Tubb, Driakare, ABO |
| Property Code 39779 | Property Name PINOT | Well Number 3 |
| OGRID No. 873 | Operator Name APACHE CORPORATION | Elevation 3577' |

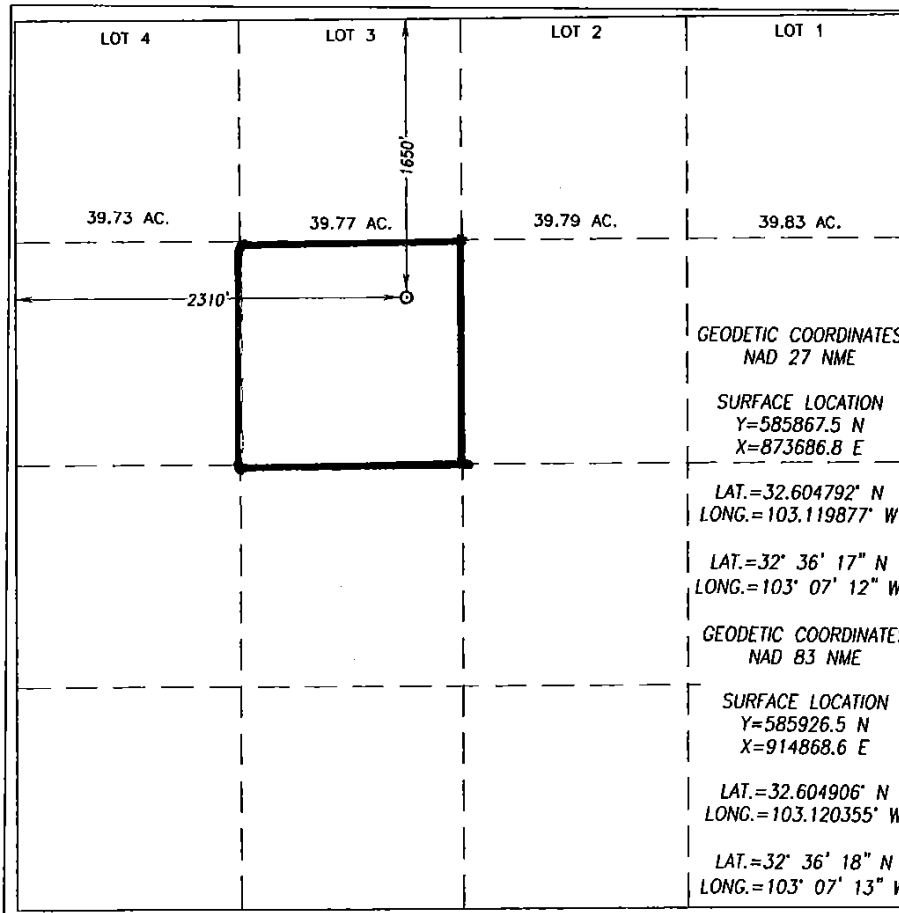
Surface Location

| | | | | | | | | | |
|---------------------------|---------------------|-------------------------|----------------------|---------|------------------------------|----------------------------------|------------------------------|-------------------------------|----------------------|
| UL or lot No. F | Section 2 | Township 20-S | Range 38-E | Lot Idn | Feet from the 1650 | North/South line NORTH | Feet from the 2310 | East/West line WEST | County LEA |
|---------------------------|---------------------|-------------------------|----------------------|---------|------------------------------|----------------------------------|------------------------------|-------------------------------|----------------------|

Bottom Hole Location If Different From Surface

| | | | | | | | | | |
|------------------------------|-----------------|--------------------|-----------|---------|---------------|------------------|---------------|----------------|--------|
| UL or lot No. | Section | Township | Range | Lot Idn | Feet from the | North/South line | Feet from the | East/West line | County |
| Dedicated Acres 40 | Joint or Infill | Consolidation Code | Order No. | | | | | | |

NO ALLOWABLE WILL BE ASSIGNED TO THIS COMPLETION UNTIL ALL INTERESTS HAVE BEEN CONSOLIDATED OR A NON-STANDARD UNIT HAS BEEN APPROVED BY THE DIVISION



OPERATOR CERTIFICATION

I hereby certify that the information herein is true and complete to the best of my knowledge and belief, and that this organization either owns a working interest or unleased mineral interest in the land including the proposed bottom hole location or has a right to drill this well at this location pursuant to a contract with an owner of such mineral or working interest, or to a voluntary pooling agreement or a compulsory pooling order heretofore entered by the division.

Michelle Cooper 5-22-14
Signature Date

Michelle Cooper
Printed Name

michelle.cooper@apachecorp.com
E-mail Address

SURVEYOR CERTIFICATION

I hereby certify that the well location shown on this plat was plotted from field notes of actual surveys made by me or under my supervision, and that the same is true and correct to the best of my belief.

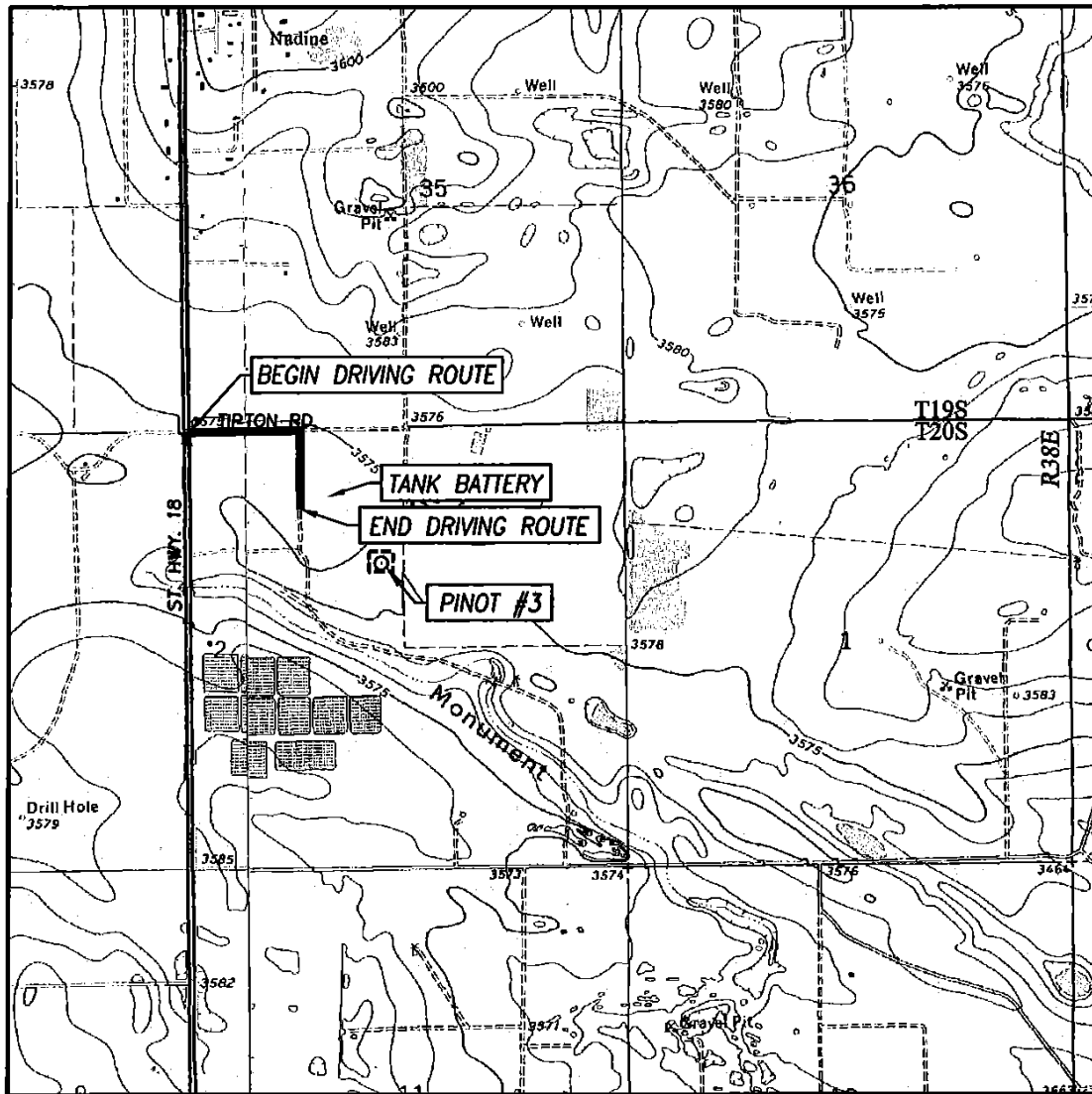
APRIL 18, 2014

Date of Survey
Signature of Registered Professional Surveyor:

Ronald J. Eidson
3239
Certificate Number 12641
J. Eidson 3239

ACK JWSC W.O.: 14.11.0397

LOCATION VERIFICATION MAP



SCALE: 1" = 2000'

CONTOUR INTERVAL:
HOBBS SE, N.M. - 10'
HOBBS SW, N.M. - 10'

SEC. 2 TWP. 20-S RGE. 38-E

SURVEY N.M.P.M.

COUNTY LEA STATE NEW MEXICO

DESCRIPTION 1650' FNL & 2310' FWL

ELEVATION 3577'

OPERATOR APACHE CORPORATION

LEASE PINOT

U.S.G.S. TOPOGRAPHIC MAP
HOBBS SE, N.M.

DIRECTIONS TO PINOT #3:

FROM THE INTERSECTION OF ST. HIGHWAY 18 AND TIPTON ROAD, GO EAST ON TIPTON ROAD FOR APPROX. 0.3 MILES. TURN RIGHT AND GO SOUTH AT LEASE ROAD APPROX. 0.1 MILE TO EXISTING BATTERY TANK. THE LOCATION IS SOUTHEAST APPROX. 900 FEET.



PROVIDING SURVEYING SERVICES
SINCE 1946
JOHN WEST SURVEYING COMPANY
412 N. DAL PASO HOBBS, N.M. 88240
(575) 393-3117 www.jwsc.biz
TBPLS# 10021000

District I
1625 N. French Dr., Hobbs, NM 88240
Phone:(575) 393-8181 Fax:(575) 393-0720
District II
811 S. First St., Artesia, NM 88210
Phone:(575) 748-1283 Fax:(575) 748-9720
District III
1000 Rio Brazos Rd., Aztec, NM 87410
Phone:(505) 334-8178 Fax:(505) 334-8170
District IV
1220 S. St Francis Dr., Santa Fe, NM 87505
Phone:(505) 476-3470 Fax:(505) 476-3462

State of New Mexico
Energy, Minerals and Natural Resources
Oil Conservation Division
1220 S. St Francis Dr.
Santa Fe, NM 87505

Form APD Comments

Permit 188633

PERMIT COMMENTS

| | | |
|---|--|-----------------------------|
| Operator Name and Address: APACHE CORP [873] 303 Veterans Airpark Lane Midland, TX 79705 | | API Number: 30-025-41865 |
| | | Well: PINOT #003 |

| | | |
|------------|---------|--------------|
| Created By | Comment | Comment Date |
|------------|---------|--------------|

District I

1625 N. French Dr., Hobbs, NM 88240
Phone:(575) 393-8161 Fax:(575) 393-0720

District II

811 S. First St., Artesia, NM 88210
Phone:(575) 748-1283 Fax:(575) 748-9720

District III

1000 Rio Brazos Rd., Aztec, NM 87410
Phone:(505) 334-6178 Fax:(505) 334-6170

District IV

1220 S. St Francis Dr., Santa Fe, NM 87505
Phone:(505) 476-3470 Fax:(505) 476-3462

Form APD Conditions

Permit 186633

State of New Mexico
Energy, Minerals and Natural Resources
Oil Conservation Division
1220 S. St Francis Dr.
Santa Fe, NM 87505

PERMIT CONDITIONS OF APPROVAL

| | |
|---|-----------------------------|
| Operator Name and Address: APACHE CORP [873] 303 Veterans Airpark Lane Midland, TX 79705 | API Number: 30-025-41865 |
| | Well: PINOT #003 |

| OCD Reviewer | Condition |
|-----------------|---|
| pkautz | Once the well is spud, to prevent ground water contamination through whole or partial conduits from the surface, the operator shall drill without interruption through the fresh water zone or zones and shall immediately set in cement the water protection string |
| pkautz | If using a pit for drilling and completion operations, must have an approved pit from prior to spudding the well. |
| pkautz | SURFACE & PRODUCTION CASING - Cement must circulate to surface |
| pkautz | Surface casing must be set 25' below top of Rustler Anhydrite in order to seal off protectable water |
| pkautz | Will require form C-103 per R-11363 preapproved pools(House;Blincy, House;Tubb and House;Drinkard) for Downhole commingling before these zones can be produced by commingling in the wellbore in accordance with the Rule 19.15.12.11. Will require form C-107A submitted to Santa Fe when downhole comingling House;Abo with other pools |