

District I
1625 N. French Dr., Hobbs, NM 88240
Phone:(575) 393-8161 Fax:(575) 393-0720
District II
811 S. First St., Artesia, NM 88210
Phone:(575) 748-1283 Fax:(575) 748-9720
District III
1000 Rio Brazos Rd., Aztec, NM 87410
Phone:(505) 334-8178 Fax:(505) 334-8170
District IV
1220 S. St Francis Dr., Santa Fe, NM 87505
Phone:(505) 476-3470 Fax:(505) 476-3482

State of New Mexico
Energy, Minerals and Natural Resources
Oil Conservation Division
1220 S. St Francis Dr.
Santa Fe, NM 87505

Form C-101
August 1, 2011
Permit 190254

APPLICATION FOR PERMIT TO DRILL, RE-ENTER, DEEPEN, PLUGBACK, OR ADD A ZONE

1. Operator Name and Address APACHE CORP 303 Veterans Airpark Lane Midland, TX 79705		2. OGRID Number 873
4. Property Code 306627		3. API Number 30-025-42056
5. Property Name WARN STATE AC 2		6. Well No. 029

7. Surface Location

UL - Lot	K	Section	6	Township	18S	Range	35E	Lot Idn		Feet From	2600	N/S Line	S	Feet From	1900	E/W Line	W	County	Lea
----------	---	---------	---	----------	-----	-------	-----	---------	--	-----------	------	----------	---	-----------	------	----------	---	--------	-----

8. Proposed Bottom Hole Location

UL - Lot	F	Section	6	Township	18S	Range	35E	Lot Idn	F	Feet From	2310	N/S Line	N	Feet From	2310	E/W Line	W	County	Lea
----------	---	---------	---	----------	-----	-------	-----	---------	---	-----------	------	----------	---	-----------	------	----------	---	--------	-----

9. Pool Information

VACUUM;UPPER PENN	62320
VACUUM;WOLFCAMP	62340
VACUUM;ABO REEF	61780

Additional Well Information

11. Work Type New Well	12. Well Type OIL	13. Cable/Rotary	14. Lease Type State	15. Ground Level Elevation 3981
16. Multiple Y	17. Proposed Depth 10700	18. Formation Pennsylvanian	19. Contractor	20. Spud Date
Depth to Ground water		Distance from nearest fresh water well		Distance to nearest surface water

☒ We will be using a closed-loop system in lieu of lined pits

21. Proposed Casing and Cement Program

Type	Hole Size	Casing Size	Casing Weight/ft	Setting Depth	Sacks of Cement	Estimated TOC
Surf	17.5	13.375	54.5	1450	1000	
Int1	11	8.625	32	5540	1400	
Prod	7.875	5.5	17	10700	1600	

Casing/Cement Program: Additional Comments

--

22. Proposed Blowout Prevention Program

Type	Working Pressure	Test Pressure	Manufacturer
Hydril	3000	2000	

23. I hereby certify that the information given above is true and complete to the best of my knowledge and belief. I further certify I have complied with 19.15.14.9 (A) NMAC <input checked="" type="checkbox"/> and/or 19.15.14.9 (B) NMAC <input checked="" type="checkbox"/> if applicable. Signature: Printed Name: Electronically filed by Bobby Smith Title: Email Address: bobby.smith@apachecorp.com Date: 8/19/2014 Phone: 432-818-1020	OIL CONSERVATION DIVISION Approved By: Paul Kautz Title: Geologist Approved Date: 8/19/2014 Expiration Date: 8/19/2016 Conditions of Approval Attached
---	---

DISTRICT I
1625 N. French Dr., Hobbs, NM 88240
Phone: (575) 393-6161 Fax: (575) 393-0720
DISTRICT II
811 S. First St., Artesia, NM 88210
Phone: (575) 748-1283 Fax: (575) 748-9720
DISTRICT III
1000 Rio Brazos Road, Aztec, NM 87410
Phone: (505) 334-6178 Fax: (505) 334-6170
DISTRICT IV
1220 S. St. Francis Dr., Santa Fe, NM 87505
Phone: (505) 476-3460 Fax: (505) 476-3462

State of New Mexico
Energy, Minerals & Natural Resources Department
OIL CONSERVATION DIVISION
1220 South St. Francis Dr.
Santa Fe, New Mexico 87505

Form C-102
Revised August 1, 2011
Submit one copy to appropriate
District Office

AMENDED REPORT

WELL LOCATION AND ACREAGE DEDICATION PLAT

API Number 30-025-	Pool Code 62320 61780	Pool Name Vacuum Upper Penn	Well Number 29
Property Code	Property Name WARN STATE AC 2		Elevation 3981'
OGRID No. 873	Operator Name APACHE CORPORATION		

Surface Location

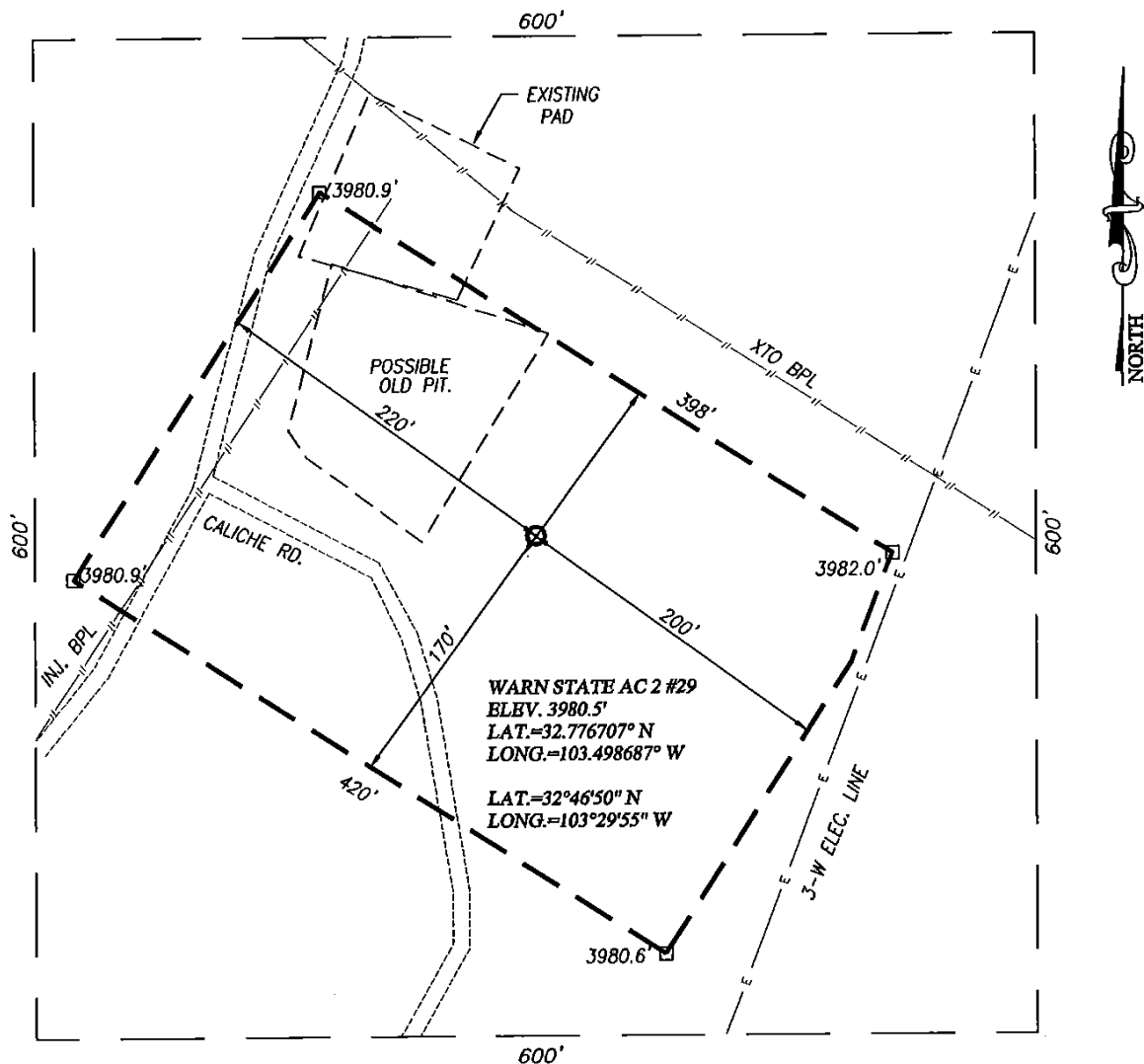
UL or lot No.	Section	Township	Range	Lot Idn	Feet from the	North/South line	Feet from the	East/West line	County
K	6	18-S	35-E		2600	SOUTH	1900	WEST	LEA

Bottom Hole Location If Different From Surface

UL or lot No.	Section	Township	Range	Lot Idn	Feet from the	North/South line	Feet from the	East/West line	County
F	6	18-S	35-E		2310	NORTH	2310	WEST	LEA
Dedicated Acres 40	Joint or Infill	Consolidation Code	Order No.						

NO ALLOWABLE WILL BE ASSIGNED TO THIS COMPLETION UNTIL ALL INTERESTS HAVE BEEN CONSOLIDATED OR A NON-STANDARD UNIT HAS BEEN APPROVED BY THE DIVISION

	<p>OPERATOR CERTIFICATION</p> <p>I hereby certify that the information herein is true and complete to the best of my knowledge and belief, and that this organization either owns a working interest or unleased mineral interest in the land including the proposed bottom hole location or has a right to drill this well at this location pursuant to a contract with an owner of such mineral or working interest, or to a voluntary pooling agreement or a compulsory pooling order heretofore entered by the division.</p> <p><i>Michelle Cooper</i> 8-6-14 Signature Date <i>Michelle Cooper</i> Printed Name <i>michelle.cooper@apachecorp.com</i> E-mail Address</p>
	<p>SURVEYOR CERTIFICATION</p> <p>I hereby certify that the well location shown on this plat was plotted from field notes of actual surveys made by me or under my supervision, and that the same is true and correct to the best of my belief.</p> <p>JUNE 24, 2014 Date of Survey Signature & Seal of Professional Surveyor: <i>Ronald J. Eidson</i> Professional Surveyor Certificate Number <i>3239</i> Ronald J. Eidson 12641 LSL JWSC W.O.: 14.11.0666</p>
	<p>CORNER COORDINATES TABLE</p> <p>A - Y= 648657.9 N, X= 755864.7 E B - Y= 648660.0 N, X= 757185.2 E C - Y= 647334.5 N, X= 757199.6 E D - Y= 647333.4 N, X= 755878.3 E E - Y= 646012.5 N, X= 757214.0 E F - Y= 646010.6 N, X= 755891.9 E</p> <p>BOTTOM HOLE LOCATION Y= 647675.5 N X= 756941.4 E</p> <p>GEODETIC COORDINATES NAD 27 NME</p> <p>SURFACE LOCATION Y= 647288.7N X= 756535.0E</p> <p>LAT.=32°46'07" N LONG.=103°49'58" W</p> <p>LAT.=32°46'36" N LONG.=103°29'55" W</p>



NOTE:
1) SEE "LOCATION VERIFICATION MAP"
FOR PROPOSED ROAD LOCATION.

DIRECTIONS TO WARN STATE AC 2 #29:

FROM THE INTERSECTION OF STATE HWY 238 AND TEXAS CAMP
GO SOUTHEAST ON STATE HWY 238 APPROX. 0.4 MILES, TURN
RIGHT ON CALICHE RD. AND GO SOUTHWEST APPROX 238 FEET,
ROAD VEERS LEFT CONTINUE 255 FEET TO PROPOSED PAD
CORNER, WELL LOCATION IS APPROX. 244 FEET SOUTHEAST.

100 0 100 200 Feet
Scale: 1"=100'

APACHE CORPORARION

WARN STATE AC 2 #29 WELL
LOCATED 2600 FEET FROM THE SOUTH LINE
AND 1900 FEET FROM THE WEST LINE OF SECTION 6,
TOWNSHIP 18 SOUTH, RANGE 35 EAST, N.M.P.M.,
LEA COUNTY, NEW MEXICO



PROVIDING SURVEYING SERVICES
SINCE 1946
JOHN WEST SURVEYING COMPANY
412 N. DAL PASO HOBBS, N.M. 88240
(575) 393-3117 www.jwsc.biz
TBPLS# 10021000

Survey Date: 6/24/14

CAD Date: 7/3/14

Drawn By: LSL

W.O. No.: 14110666

Rev.:

Rel. W.O.:

Sheet 1 of 1

DISTRICT I
1625 N. French Dr., Hobbs, NM 88240
Phone: (505) 393-6161 Fax: (505) 393-0720
DISTRICT II
811 S. First St., Artesia, NM 88210
Phone: (505) 748-1283 Fax: (505) 748-9720
DISTRICT III
1000 Rio Brazos Road, Aztec, NM 87410
Phone: (505) 334-6178 Fax: (505) 334-6170
DISTRICT IV
1220 S. St. Francis Dr., Santa Fe, NM 87505
Phone: (505) 476-3460 Fax: (505) 476-3462

State of New Mexico
Energy, Minerals & Natural Resources Department
OIL CONSERVATION DIVISION
1220 South St. Francis Dr.
Santa Fe, New Mexico 87505

Form C-102
Revised August 1, 2011
Submit one copy to appropriate
District Office

AMENDED REPORT

WELL LOCATION AND ACREAGE DEDICATION PLAT

API Number 30-025-	Pool Code 62320 61780	Pool Name Vacuum Upper Penn	Well Number 29
Property Code	Property Name WARN STATE AC 2		Elevation 3981'
OGRID No. 873	Operator Name APACHE CORPORATION		

Surface Location

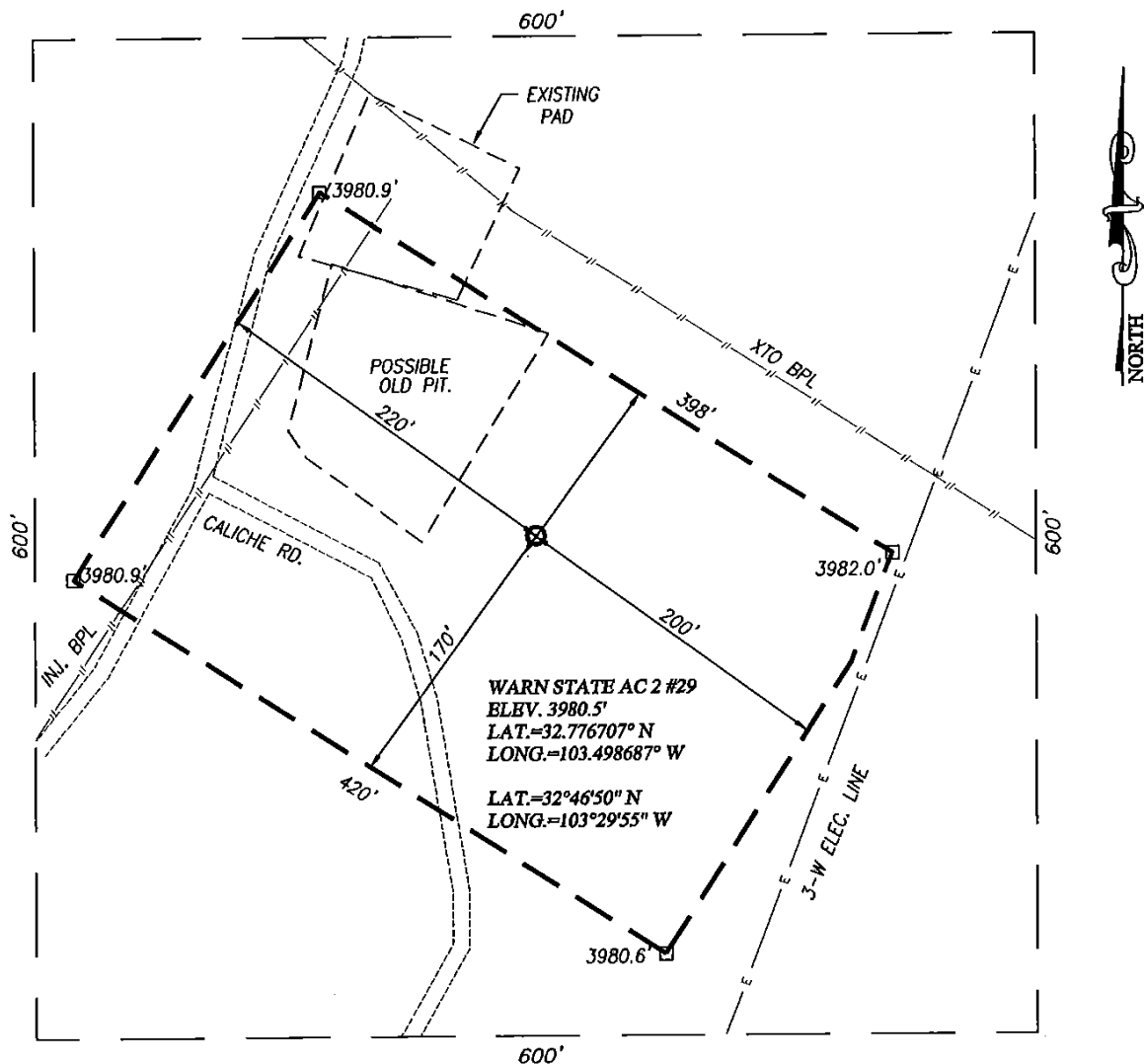
UL or lot No.	Section	Township	Range	Lot Idn	Feet from the	North/South line	Feet from the	East/West line	County
K	6	18-S	35-E		2600	SOUTH	1900	WEST	LEA

Bottom Hole Location If Different From Surface

UL or lot No.	Section	Township	Range	Lot Idn	Feet from the	North/South line	Feet from the	East/West line	County
F	6	18-S	35-E		2310	NORTH	2310	WEST	LEA
Dedicated Acres 40	Joint or Infill	Consolidation Code	Order No.						

NO ALLOWABLE WILL BE ASSIGNED TO THIS COMPLETION UNTIL ALL INTERESTS HAVE BEEN CONSOLIDATED OR A NON-STANDARD UNIT HAS BEEN APPROVED BY THE DIVISION

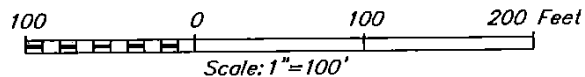
	<p>OPERATOR CERTIFICATION</p> <p>I hereby certify that the information herein is true and complete to the best of my knowledge and belief, and that this organization either owns a working interest or unleased mineral interest in the land including the proposed bottom hole location or has a right to drill this well at this location pursuant to a contract with an owner of such mineral or working interest, or to a voluntary pooling agreement or a compulsory pooling order heretofore entered by the division.</p> <p><i>Michelle Cooper</i> 8-6-14 Signature Date <i>Michelle Cooper</i> Printed Name <i>michelle.cooper@apachecorp.com</i> E-mail Address</p> <p>SURVEYOR CERTIFICATION</p> <p>I hereby certify that the well location shown on this plat was plotted from field notes of actual surveys made by me or under my supervision, and that the same is true and correct to the best of my belief.</p> <p>JUNE 24, 2014 Date of Survey Signature & Seal of Professional Surveyor: <i>Ronald J. Eidson</i> Professional Surveyor 3239 Certificate Number Ronald J. Eidson 12641 LSL JWSC W.O.: 14.11.0666</p>
--	--



NOTE:
1) SEE "LOCATION VERIFICATION MAP"
FOR PROPOSED ROAD LOCATION.

DIRECTIONS TO WARN STATE AC 2 #29:

FROM THE INTERSECTION OF STATE HWY 238 AND TEXAS CAMP
GO SOUTHEAST ON STATE HWY 238 APPROX. 0.4 MILES, TURN
RIGHT ON CALICHE RD. AND GO SOUTHWEST APPROX 238 FEET,
ROAD VEERS LEFT CONTINUE 255 FEET TO PROPOSED PAD
CORNER, WELL LOCATION IS APPROX. 244 FEET SOUTHEAST.



APACHE CORPORARION

WARN STATE AC 2 #29 WELL
LOCATED 2600 FEET FROM THE SOUTH LINE
AND 1900 FEET FROM THE WEST LINE OF SECTION 6,
TOWNSHIP 18 SOUTH, RANGE 35 EAST, N.M.P.M.,
LEA COUNTY, NEW MEXICO



PROVIDING SURVEYING SERVICES
SINCE 1946
JOHN WEST SURVEYING COMPANY
412 N. DAL PASO HOBBS, N.M. 88240
(575) 393-3117 www.jwsc.biz
TBPLS# 10021000

Survey Date: 6/24/14

CAD Date: 7/3/14

Drawn By: LSL

W.O. No.: 14110666

Rev.:

Rel. W.O.:

Sheet 1 of 1

DISTRICT I
1625 N. French Dr., Hobbs, NM 88240
Phone: (575) 393-6161 Fax: (575) 393-0720
DISTRICT II
811 S. First St., Artesia, NM 88210
Phone: (575) 748-1283 Fax: (575) 748-9720
DISTRICT III
1000 Rio Brazos Road, Aztec, NM 87410
Phone: (505) 334-6178 Fax: (505) 334-6170
DISTRICT IV
1220 S. St. Francis Dr., Santa Fe, NM 87505
Phone: (505) 476-3460 Fax: (505) 476-3462

State of New Mexico
Energy, Minerals & Natural Resources Department
OIL CONSERVATION DIVISION
1220 South St. Francis Dr.
Santa Fe, New Mexico 87505

Form C-102
Revised August 1, 2011
Submit one copy to appropriate
District Office

AMENDED REPORT

WELL LOCATION AND ACREAGE DEDICATION PLAT

API Number 30-025-	Pool Code 62320 61780	Pool Name Vacuum Upper Penn	Well Number 29
Property Code	Property Name WARN STATE AC 2		Elevation 3981'
OGRID No. 873	Operator Name APACHE CORPORATION		

Surface Location

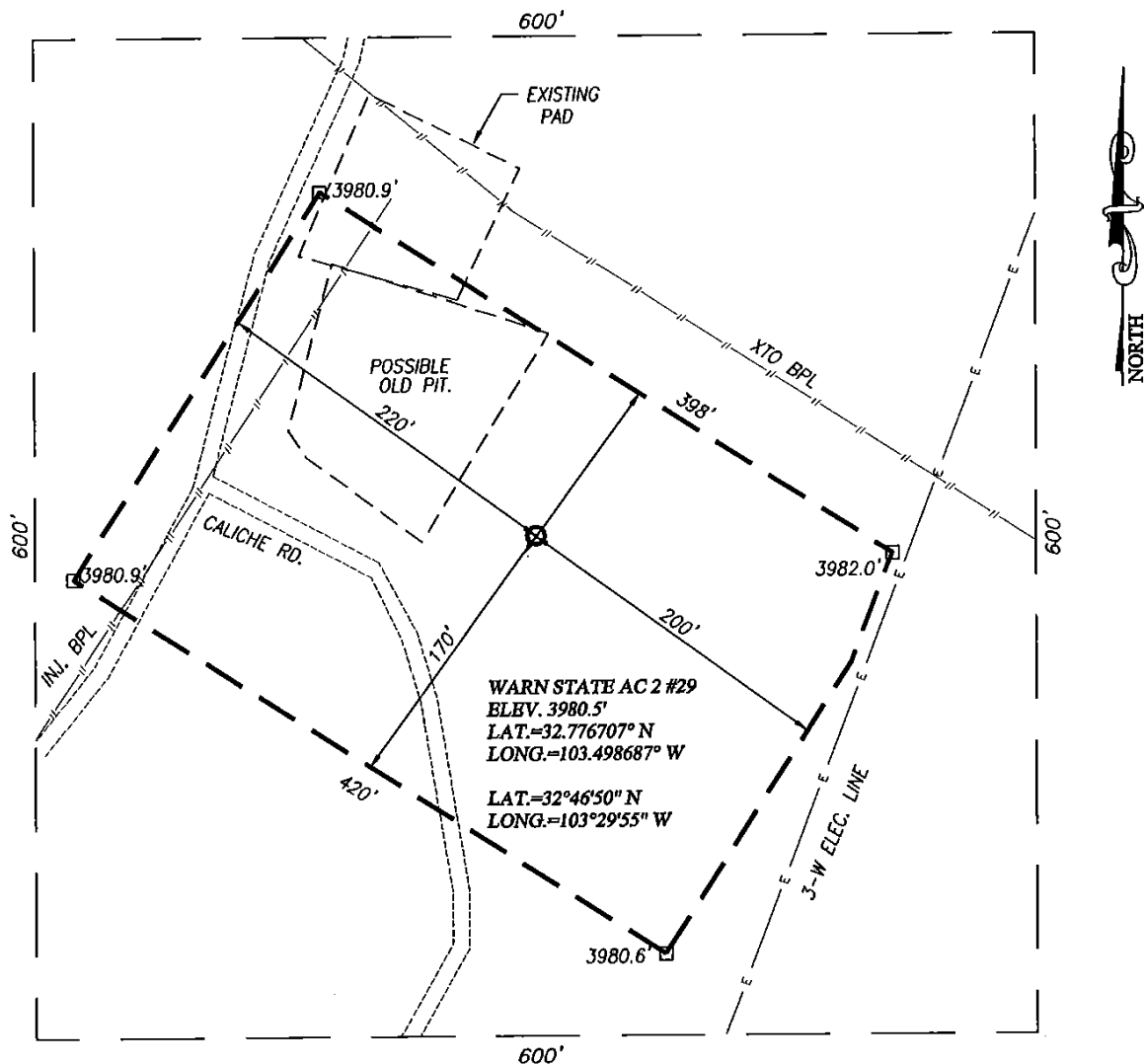
UL or lot No.	Section	Township	Range	Lot Idn	Feet from the	North/South line	Feet from the	East/West line	County
K	6	18-S	35-E		2600	SOUTH	1900	WEST	LEA

Bottom Hole Location If Different From Surface

UL or lot No.	Section	Township	Range	Lot Idn	Feet from the	North/South line	Feet from the	East/West line	County
F	6	18-S	35-E		2310	NORTH	2310	WEST	LEA
Dedicated Acres 40	Joint or Infill	Consolidation Code	Order No.						

NO ALLOWABLE WILL BE ASSIGNED TO THIS COMPLETION UNTIL ALL INTERESTS HAVE BEEN CONSOLIDATED OR A NON-STANDARD UNIT HAS BEEN APPROVED BY THE DIVISION

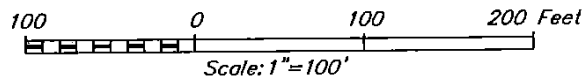
	<p>OPERATOR CERTIFICATION</p> <p>I hereby certify that the information herein is true and complete to the best of my knowledge and belief, and that this organization either owns a working interest or unleased mineral interest in the land including the proposed bottom hole location or has a right to drill this well at this location pursuant to a contract with an owner of such mineral or working interest, or to a voluntary pooling agreement or a compulsory pooling order heretofore entered by the division.</p> <p><i>Michelle Cooper</i> 8-6-14 Signature Date <i>Michelle Cooper</i> Printed Name <i>michelle.cooper@apachecorp.com</i> E-mail Address</p>
	<p>SURVEYOR CERTIFICATION</p> <p>I hereby certify that the well location shown on this plat was plotted from field notes of actual surveys made by me or under my supervision, and that the same is true and correct to the best of my belief.</p> <p>JUNE 24, 2014 Date of Survey Signature & Seal of Professional Surveyor: </p>
	<p>CORNER COORDINATES TABLE</p> <p>A - Y= 648657.9 N, X= 755864.7 E B - Y= 648660.0 N, X= 757185.2 E C - Y= 647334.5 N, X= 757199.6 E D - Y= 647333.4 N, X= 755878.3 E E - Y= 646012.5 N, X= 757214.0 E F - Y= 646010.6 N, X= 755891.9 E</p> <p>BOTTOM HOLE LOCATION Y= 647675.5 N X= 756941.4 E</p> <p>GEODETIC COORDINATES NAD 27 NME</p> <p>SURFACE LOCATION Y= 647288.7N X= 756535.0E</p> <p>LAT.=32°7'6707" N LONG.=103°49'8687" W</p> <p>LAT.=32°46'36" N LONG.=103°29'55" W</p>
	<p>GRID AZ.=46°24'44" HORIZ. DIST.=561.2"</p>



NOTE:
1) SEE "LOCATION VERIFICATION MAP"
FOR PROPOSED ROAD LOCATION.

DIRECTIONS TO WARN STATE AC 2 #29:

FROM THE INTERSECTION OF STATE HWY 238 AND TEXAS CAMP
GO SOUTHEAST ON STATE HWY 238 APPROX. 0.4 MILES, TURN
RIGHT ON CALICHE RD. AND GO SOUTHWEST APPROX 238 FEET,
ROAD VEERS LEFT CONTINUE 255 FEET TO PROPOSED PAD
CORNER, WELL LOCATION IS APPROX. 244 FEET SOUTHEAST.



APACHE CORPORARION

WARN STATE AC 2 #29 WELL
LOCATED 2600 FEET FROM THE SOUTH LINE
AND 1900 FEET FROM THE WEST LINE OF SECTION 6,
TOWNSHIP 18 SOUTH, RANGE 35 EAST, N.M.P.M.,
LEA COUNTY, NEW MEXICO



PROVIDING SURVEYING SERVICES
SINCE 1946
JOHN WEST SURVEYING COMPANY
412 N. DAL PASO HOBBS, N.M. 88240
(575) 393-3117 www.jwsc.biz
TBPLS# 10021000

Survey Date: 6/24/14

CAD Date: 7/3/14

Drawn By: LSL

W.O. No.: 14110666

Rev.:

Rel. W.O.:

Sheet 1 of 1

District I
1625 N. French Dr., Hobbs, NM 88240
Phone:(575) 393-6161 Fax:(575) 393-0720
District II
811 S. First St., Artesia, NM 88210
Phone:(575) 748-1283 Fax:(575) 748-9720
District III
1000 Rio Brazos Rd., Aztec, NM 87410
Phone:(505) 334-6178 Fax:(505) 334-6170
District IV
1220 S. St Francis Dr., Santa Fe, NM 87505
Phone:(505) 476-3470 Fax:(505) 476-3462

State of New Mexico
Energy, Minerals and Natural Resources
Oil Conservation Division
1220 S. St Francis Dr.
Santa Fe, NM 87505

Form APD Comments

Permit 190254

PERMIT COMMENTS

Operator Name and Address: APACHE CORP [873] 303 Veterans Airpark Lane Midland, TX 79705	API Number: 30-025-42056
	Well: WARN STATE AC 2 #029

Created By	Comment	Comment Date
pkautz		8/8/2014

District I
 1625 N. French Dr., Hobbs, NM 88240
 Phone:(575) 393-8161 Fax:(575) 393-0720
District II
 811 S. First St., Artesia, NM 88210
 Phone:(575) 748-1283 Fax:(575) 748-9720
District III
 1000 Rio Brazos Rd., Aztec, NM 87410
 Phone:(505) 334-6178 Fax:(505) 334-6170
District IV
 1220 S. St Francis Dr., Santa Fe, NM 87505
 Phone:(505) 476-3470 Fax:(505) 476-3482

State of New Mexico
Energy, Minerals and Natural Resources
Oil Conservation Division
1220 S. St Francis Dr.
Santa Fe, NM 87505

Form APD Conditions

Permit 190254

PERMIT CONDITIONS OF APPROVAL

Operator Name and Address: APACHE CORP [873] 303 Veterans Airpark Lane Midland, TX 79705	API Number: 30-025-42056
	Well: WARN STATE AC 2 #029

OCD Reviewer	Condition
pkautz	Once the well is spud, to prevent ground water contamination through whole or partial conduits from the surface, the operator shall drill without interruption through the fresh water zone or zones and shall immediately set in cement the water protection string
pkautz	If using a pit for drilling and completion operations, must have an approved pit from prior to spudding the well.
pkautz	Surface casing must be set 25' below top of Rustler Anhydrite in order to seal off protectable water
pkautz	SURFACE & PRODUCTION CASING - Cement must circulate to surface
pkautz	If cement does not circulate, must run temperature survey or other log to determine top of cement