

**District I**  
1625 N. French Dr., Hobbs, NM 88240  
Phone:(505) 393-8161 Fax:(505) 393-0720  
**District II**  
811 S. First St., Artesia, NM 88210  
Phone:(505) 748-1283 Fax:(505) 748-9720  
**District III**  
1000 Rio Brazos Rd., Aztec, NM 87410  
Phone:(505) 334-8178 Fax:(505) 334-8170  
**District IV**  
1220 S. St Francis Dr., Santa Fe, NM 87505  
Phone:(505) 476-3470 Fax:(505) 476-3482

**State of New Mexico**  
**Energy, Minerals and Natural Resources**  
**Oil Conservation Division**  
**1220 S. St Francis Dr.**  
**Santa Fe, NM 87505**

Form C-101  
August 1, 2011  
Permit 193702

**APPLICATION FOR PERMIT TO DRILL, RE-ENTER, DEEPEN, PLUGBACK, OR ADD A ZONE**

1. Operator Name and Address NADEL AND GUSSMAN PERMIAN, LLC 601 N MARIENFELD MIDLAND, TX 79701		2. OGRID Number 155615
4. Property Code 306668		3. API Number 30-025-42173
5. Property Name RAPTOR WEST 3 STATE		6. Well No. 004H

**7. Surface Location**

UL - Lot	P	Section	3	Township	19S	Range	34E	Lot Idn	Feet From	250	N/S Line	S	Feet From	330	E/W Line	E	County	Lea
----------	---	---------	---	----------	-----	-------	-----	---------	-----------	-----	----------	---	-----------	-----	----------	---	--------	-----

**8. Proposed Bottom Hole Location**

UL - Lot	A	Section	3	Township	19S	Range	34E	Lot Idn	1	Feet From	330	N/S Line	N	Feet From	330	E/W Line	E	County	Lea
----------	---	---------	---	----------	-----	-------	-----	---------	---	-----------	-----	----------	---	-----------	-----	----------	---	--------	-----

**9. Pool Information**

SCHARB;BONE SPRING	55610
--------------------	-------

**Additional Well Information**

11. Work Type New Well	12. Well Type OIL	13. Cable/Rotary	14. Lease Type State	15. Ground Level Elevation 3988
16. Multiple N	17. Proposed Depth 15400	18. Formation 3rd Bone Spring Sand	19. Contractor	20. Spud Date 10/14/2014
Depth to Ground water		Distance from nearest fresh water well		Distance to nearest surface water

☒ We will be using a closed-loop system in lieu of lined pits

**21. Proposed Casing and Cement Program**

Type	Hole Size	Casing Size	Casing Weight/ft	Setting Depth	Sacks of Cement	Estimated TOC
Surf	17.5	13.375	54.5	1850	1600	0
Int1	12.25	9.625	40	3500	1100	0
Prod	8.75	5.5	17	15400	2000	3000

**Casing/Cement Program: Additional Comments**

--

**22. Proposed Blowout Prevention Program**

Type	Working Pressure	Test Pressure	Manufacturer
Annular	5000	5000	SHAFFER
Double Ram	5000	5000	SHAFFER

23. I hereby certify that the information given above is true and complete to the best of my knowledge and belief. I further certify I have complied with 19.15.14.9 (A) NMAC <input checked="" type="checkbox"/> and/or 19.15.14.9 (B) NMAC <input checked="" type="checkbox"/> if applicable.  Signature:	<b>OIL CONSERVATION DIVISION</b>
Printed Name: Electronically filed by Scott Germann	Approved By: Paul Kautz
Title: General Manager	Title: Geologist
Email Address: sgerman@naguss.com	Approved Date: 10/8/2014      Expiration Date: 10/8/2016
Date: 10/7/2014      Phone: 432-682-4429	Conditions of Approval Attached

DISTRICT I  
1625 N. French Dr., Hobbs, NM 88240  
Phone: (575) 393-6161 Fax: (575) 393-0720

DISTRICT II  
811 S. First St., Artesia, NM 88210  
Phone: (575) 748-1283 Fax: (575) 748-9720

DISTRICT III  
1000 Rio Brazos Road, Aztec, NM 87410  
Phone: (505) 334-6178 Fax: (505) 334-6170

DISTRICT IV  
1220 S. St. Francis Dr., Santa Fe, NM 87505  
Phone: (505) 476-3460 Fax: (505) 476-3462

State of New Mexico  
Energy, Minerals & Natural Resources Department  
OIL CONSERVATION DIVISION  
1220 South St. Francis Dr.  
Santa Fe, New Mexico 87505

Form C-102  
Revised August 1, 2011  
Submit one copy to appropriate  
District Office

☐ AMENDED REPORT

WELL LOCATION AND ACREAGE DEDICATION PLAT

API Number	Pool Code	Pool Name <b>Scharb; Bone Spring</b>
Property Code	Property Name <b>RAPTOR WEST 3 STATE</b>	Well Number <b>4H</b>
OGRID No. <b>155615</b>	Operator Name <b>NADEL &amp; GUSSMAN PERMIAN, LLC</b>	Elevation <b>3988'</b>

Surface Location

UL or lot No.	Section	Township	Range	Lot Idn	Feet from the	North/South line	Feet from the	East/West line	County
<b>P</b>	<b>3</b>	<b>19-S</b>	<b>34-E</b>		<b>250</b>	<b>SOUTH</b>	<b>330</b>	<b>EAST</b>	<b>LEA</b>

Bottom Hole Location If Different From Surface

UL or lot No.	Section	Township	Range	Lot Idn	Feet from the	North/South line	Feet from the	East/West line	County
<b>1</b>	<b>3</b>	<b>19-S</b>	<b>34-E</b>		<b>330</b>	<b>NORTH</b>	<b>330</b>	<b>EAST</b>	<b>LEA</b>

Dedicated Acres <b>164.20</b>	Joint or Infill	Consolidation Code	Order No.
----------------------------------	-----------------	--------------------	-----------

NO ALLOWABLE WILL BE ASSIGNED TO THIS COMPLETION UNTIL ALL INTERESTS HAVE BEEN CONSOLIDATED OR A NON-STANDARD UNIT HAS BEEN APPROVED BY THE DIVISION

4	3	2	1
44.32 AC.	44.28 AC.	44.24 AC.	44.20 AC.
<p>GEODETC COORDINATES NAD 27 NME BOTTOM HOLE LOCATION Y=617801.7 N X=744018.1 E LAT.=32.695927° N LONG.=103.540126° W</p>			
<p>GEODETC COORDINATES NAD 83 NME BOTTOM HOLE LOCATION Y=617865.7 N X=785197.8 E LAT.=32.696050° N LONG.=103.540620° W</p>			
<p>GEODETC COORDINATES NAD 27 NME SURFACE LOCATION Y=612964.6 N X=744044.2 E LAT.=32.682631° N LONG.=103.540159° W</p>			
<p>GEODETC COORDINATES NAD 83 NME SURFACE LOCATION Y=613028.4 N X=785224.0 E LAT.=32.682755° N LONG.=103.540653° W</p>			
<p>GRID AZ = 359°41'21" HORIZ. DIST. = 48.38.4'</p>			
<p>B.H. 330'</p>			
<p>S.L. 250'</p>			

**OPERATOR CERTIFICATION**

I hereby certify that the information herein is true and complete to the best of my knowledge and belief, and that this organization either owns a working interest or unleased mineral interest in the land including the proposed bottom hole location or has a right to drill this well at this location pursuant to a contract with an owner of such mineral or working interest, or to a voluntary pooling agreement or a compulsory pooling order heretofore entered by the division.

Signature: Sarah Presley Date: 10.7.2014

Printed Name: Sarah Presley

E-mail Address: Spresley@naguss.com

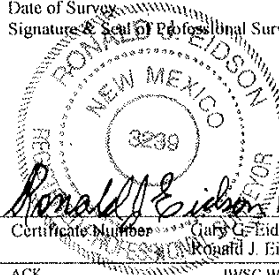
**SURVEYOR CERTIFICATION**

I hereby certify that the well location shown on this plat was plotted from field notes of actual surveys made by me or under my supervision, and that the same is true and correct to the best of my belief.

SEPTEMBER 29, 2014

Date of Survey: \_\_\_\_\_

Signature of Professional Surveyor: Ronald J. Eidson

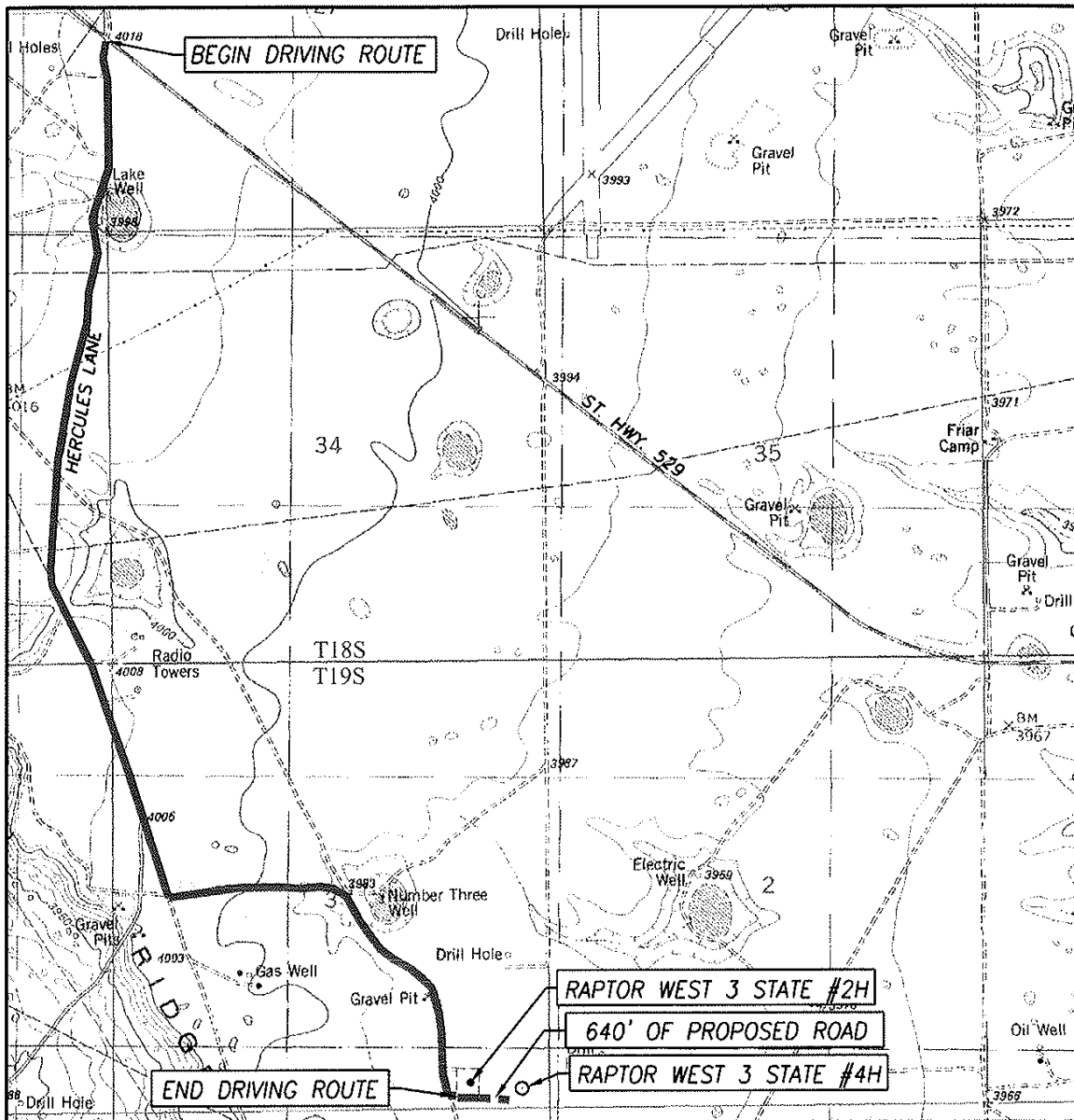


Certificate Number: 12641 Gary G. Eidson  
3239 Ronald J. Eidson

ACK JWSC W.O. 14.11.1022



# LOCATION VERIFICATION MAP



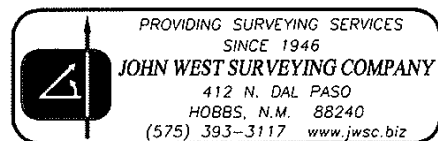
SCALE: 1" = 2000'

CONTOUR INTERVAL:  
IRON HOUSE WELL, N.M. — 10'

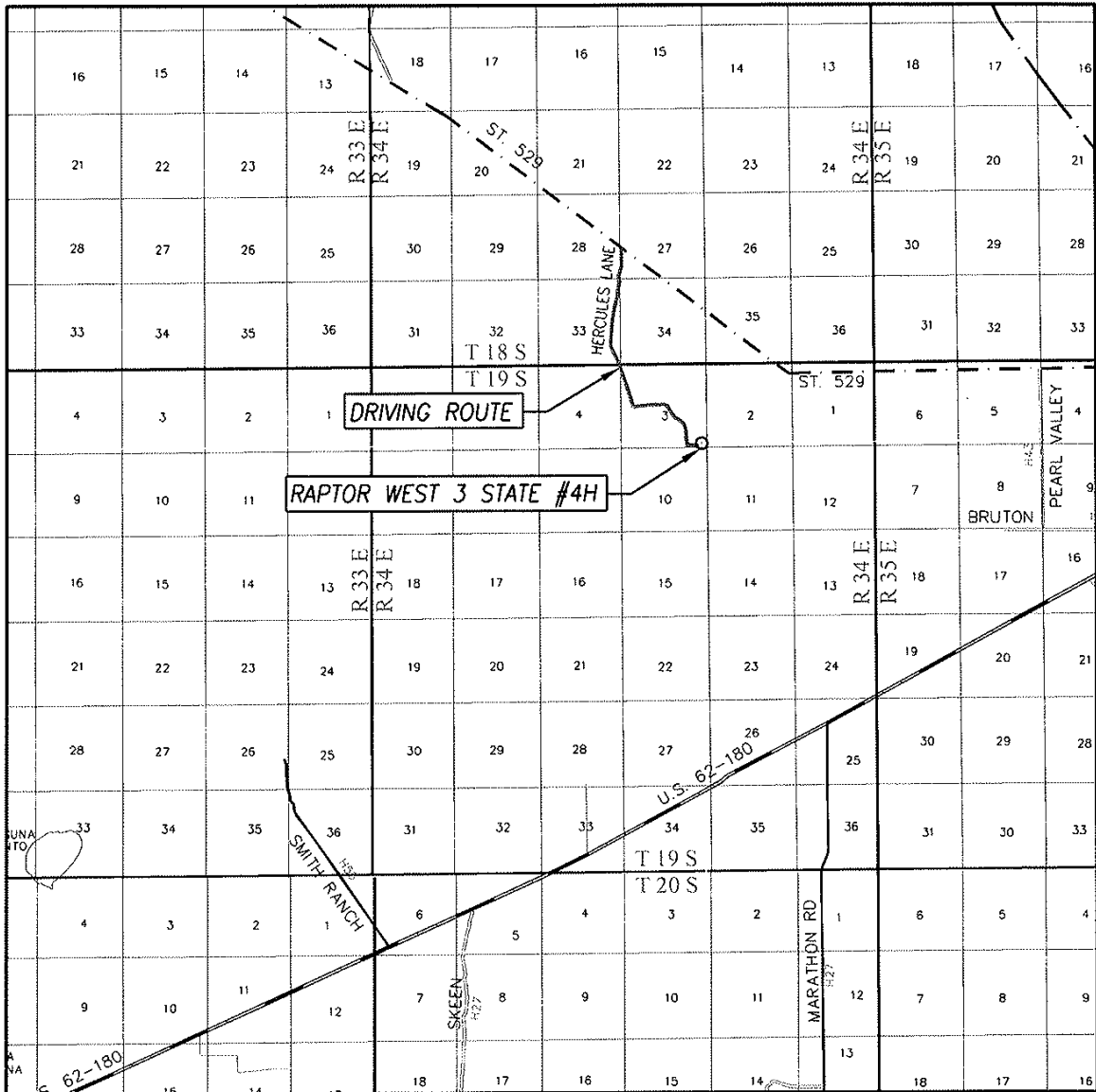
SEC. 3 TWP. 19-S RGE. 34-E  
 SURVEY \_\_\_\_\_ N.M.P.M. \_\_\_\_\_  
 COUNTY LEA STATE NEW MEXICO  
 DESCRIPTION 250' FSL & 330' FEL  
 ELEVATION 3988'  
 OPERATOR NADEL & GUSSMAN PERMIAN, LLC  
 LEASE RAPTOR WEST 3 STATE  
 U.S.G.S. TOPOGRAPHIC MAP  
 IRON HOUSE WELL, N.M.

## DIRECTIONS TO RAPTOR WEST 3 STATE #4H WELL:

FROM THE INTERSECTION OF STATE HIGHWAY 529 AND HERCULES LANE. GO SOUTH ON HERCULES LANE APPROX. 1.3 MILES. VEER LEFT AND GO SOUTHEAST APPROX. 0.8 MILES. TURN LEFT AND GO EAST APPROX. 0.5 MILES TO THE RAPTOR WEST 3 STATE #2H WELL & BATTERY PAD, FROM SOUTHWEST CORNER PAD. FOLLOW STAKED ROAD 640 FEET FROM THE SOUTHWEST CORNER TO THIS LOCATION.



# VICINITY MAP



SCALE: 1" = 2 MILES

SEC. 3 TWP. 19-S RGE. 34-E

SURVEY N.M.P.M.

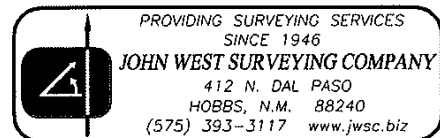
COUNTY LEA STATE NEW MEXICO

DESCRIPTION 250' FSL & 330' FEL

ELEVATION 3988'

OPERATOR NADEL & GUSSMAN PERMAN, LLC

LEASE RAPTOR WEST 3 STATE



**District I**  
1625 N. French Dr., Hobbs, NM 88240  
Phone:(575) 393-8161 Fax:(575) 393-0720  
**District II**  
811 S. First St., Artesia, NM 88210  
Phone:(575) 748-1283 Fax:(575) 748-9720  
**District III**  
1000 Rio Brazos Rd., Aztec, NM 87410  
Phone:(505) 334-6178 Fax:(505) 334-6170  
**District IV**  
1220 S. St Francis Dr., Santa Fe, NM 87505  
Phone:(505) 476-3470 Fax:(505) 476-3482

**State of New Mexico**  
**Energy, Minerals and Natural Resources**  
**Oil Conservation Division**  
**1220 S. St Francis Dr.**  
**Santa Fe, NM 87505**

Form APD Comments

Permit 193702

**PERMIT COMMENTS**

Operator Name and Address: NADEL AND GUSSMAN PERMIAN, LLC [155615] 601 N MARIENFELD MIDLAND , TX 79701	API Number: 30-025-42173
	Well: RAPTOR WEST 3 STATE #004H

Created By	Comment	Comment Date
------------	---------	--------------

**District I**  
 1625 N. French Dr., Hobbs, NM 88240  
 Phone:(575) 393-8161 Fax:(575) 393-0720  
**District II**  
 811 S. First St., Artesia, NM 88210  
 Phone:(575) 748-1283 Fax:(575) 748-9720  
**District III**  
 1000 Rio Brazos Rd., Aztec, NM 87410  
 Phone:(505) 334-6178 Fax:(505) 334-6170  
**District IV**  
 1220 S. St Francis Dr., Santa Fe, NM 87505  
 Phone:(505) 476-3470 Fax:(505) 476-3462

**State of New Mexico**  
**Energy, Minerals and Natural Resources**  
**Oil Conservation Division**  
**1220 S. St Francis Dr.**  
**Santa Fe, NM 87505**

Form APD Conditions

Permit 193702

**PERMIT CONDITIONS OF APPROVAL**

Operator Name and Address: NADEL AND GUSSMAN PERMIAN, LLC [155615] 601 N MARIENFELD MIDLAND , TX 79701		API Number: 30-025-42173
		Well: RAPTOR WEST 3 STATE #004H
OCD Reviewer	Condition	
DMULL	Will require a directional survey with the C-104	
DMULL	Once the well is spud, to prevent ground water contamination through whole or partial conduits from the surface, the operator shall drill without interruption through the fresh water zone or zones and shall immediately set in cement the water protection string	
pkautz	If using a pit for drilling and completion operations, must have an approved pit from prior to spudding the well.	
pkautz	Surface casing must be set 25' below top of Rustler Anhydrite in order to seal off protectable water	
pkautz	1) SURFACE & INTERMEDIATE CASING - Cement must circulate to surface -- 2) PRODUCTION CASING - Cement must tie back into intermediate casing --	
pkautz	If cement does not circulate to surface, must run temperature survey or other log to determine top of cement	