

District I
1625 N. French Dr., Hobbs, NM 88240
Phone:(575) 393-6161 Fax:(575) 393-0720

District II
811 S. First St., Artesia, NM 88210
Phone:(575) 749-1283 Fax:(575) 748-9720

District III
1000 Rio Brazos Rd., Aztec, NM 87410
Phone:(505) 334-6178 Fax:(505) 334-6170

District IV
1220 S. St Francis Dr., Santa Fe, NM 87505
Phone:(505) 476-3470 Fax:(505) 476-3462

State of New Mexico
Energy, Minerals and Natural Resources
Oil Conservation Division
1220 S. St Francis Dr.
Santa Fe, NM 87505

Form C-101
August 1, 2011
Permit 104024

APPLICATION FOR PERMIT TO DRILL, RE-ENTER, DEEPEN, PLUGBACK, OR ADD A ZONE

1. Operator Name and Address APACHE CORP 303 Veterans Airpark Lane Midland, TX 79705		2. OGRID Number 873
		3. API Number 30-025-42213
4. Property Code 313832	5. Property Name TURBODOG 13 STATE	6. Well No. 001H

7. Surface Location

UL - Lot M	Section 13	Township 19S	Range 34E	Lot Idn	Feet From 180	N/S Line S	Feet From 660	E/W Line W	County Lea
---------------	---------------	-----------------	--------------	---------	------------------	---------------	------------------	---------------	---------------

8. Proposed Bottom Hole Location

UL - Lot D	Section 13	Township 19S	Range 34E	Lot Idn D	Feet From 330	N/S Line N	Feet From 660	E/W Line W	County Lea
---------------	---------------	-----------------	--------------	--------------	------------------	---------------	------------------	---------------	---------------

9. Pool Information

SCHARB;BONE SPRING	55610
--------------------	-------

Additional Well Information

11. Work Type New Well	12. Well Type OIL	13. Cable/Rotary	14. Lease Type State	15. Ground Level Elevation 3856
16. Multiple N	17. Proposed Depth 15632	18. Formation Wolfcamp	19. Contractor	20. Spud Date
Depth to Ground water		Distance from nearest fresh water well		Distance to nearest surface water

We will be using a closed-loop system in lieu of lined pits

21. Proposed Casing and Cement Program

Type	Hole Size	Casing Size	Casing Weight/ft	Setting Depth	Sacks of Cement	Estimated TOC
Surf	17.5	13.375	54.5	1900	1600	
Int1	12.25	9.625	40	3800	1000	
Prod	8.5	5.5	20	15632	2000	

Casing/Cement Program: Additional Comments

--

22. Proposed Blowout Prevention Program

Type	Working Pressure	Test Pressure	Manufacturer
Double Ram	3000	3000	Cameron

<p>23. I hereby certify that the information given above is true and complete to the best of my knowledge and belief. I further certify I have complied with 19.15.14.9 (A) NMAC <input checked="" type="checkbox"/> and/or 19.15.14.9 (B) NMAC <input checked="" type="checkbox"/>, if applicable.</p> <p>Signature:</p> <p>Printed Name: Electronically filed by Bobby Smith</p> <p>Title:</p> <p>Email Address: bobby.smith@apachecorp.com</p> <p>Date: 10/27/2014</p>	<p>OIL CONSERVATION DIVISION</p> <p>Approved By: Paul Kautz</p> <p>Title: Geologist</p> <p>Approved Date: 10/28/2014</p> <p>Expiration Date: 10/28/2016</p> <p>Conditions of Approval Attached</p>
---	---

DISTRICT I
1625 N. French Dr., Hobbs, NM 88240
Phone: (575) 393-6161 Fax: (575) 393-0720

DISTRICT II
811 S. First St., Artesia, NM 88210
Phone: (575) 748-1283 Fax: (575) 748-9720

DISTRICT III
1000 Rio Bruzas Road, Aztec, NM 87410
Phone: (505) 334-6178 Fax: (505) 334-6170

DISTRICT IV
1220 S. St. Francis Dr., Santa Fe, NM 87505
Phone: (505) 476-3460 Fax: (505) 476-3462

State of New Mexico
Energy, Minerals & Natural Resources Department
OIL CONSERVATION DIVISION
1220 South St. Francis Dr.
Santa Fe, New Mexico 87505

Form C-102
Revised August 1, 2011
Submit one copy to appropriate
District Office

AMENDED REPORT

WELL LOCATION AND ACREAGE DEDICATION PLAT

API Number 30-025-	Pool Code 55610	Pool Name Scharb, Bone Spring
Property Code	Property Name TURBODOG 13 STATE	Well Number IH
OGRID No. 873	Operator Name APACHE CORPORATION	Elevation 3856'

Surface Location

UL or lot No.	Section	Township	Range	Lot ldn	Feet from the	North/South line	Feet from the	East/West line	County
M	13	19-S	34-E		180	SOUTH	660	WEST	LEA

Bottom Hole Location If Different From Surface

UL or lot No.	Section	Township	Range	Lot ldn	Feet from the	North/South line	Feet from the	East/West line	County
D	13	19-S	34-E		330	NORTH	660	WEST	LEA

Dedicated Acres 160	Joint or Infill	Consolidation Code	Order No.
-------------------------------	-----------------	--------------------	-----------

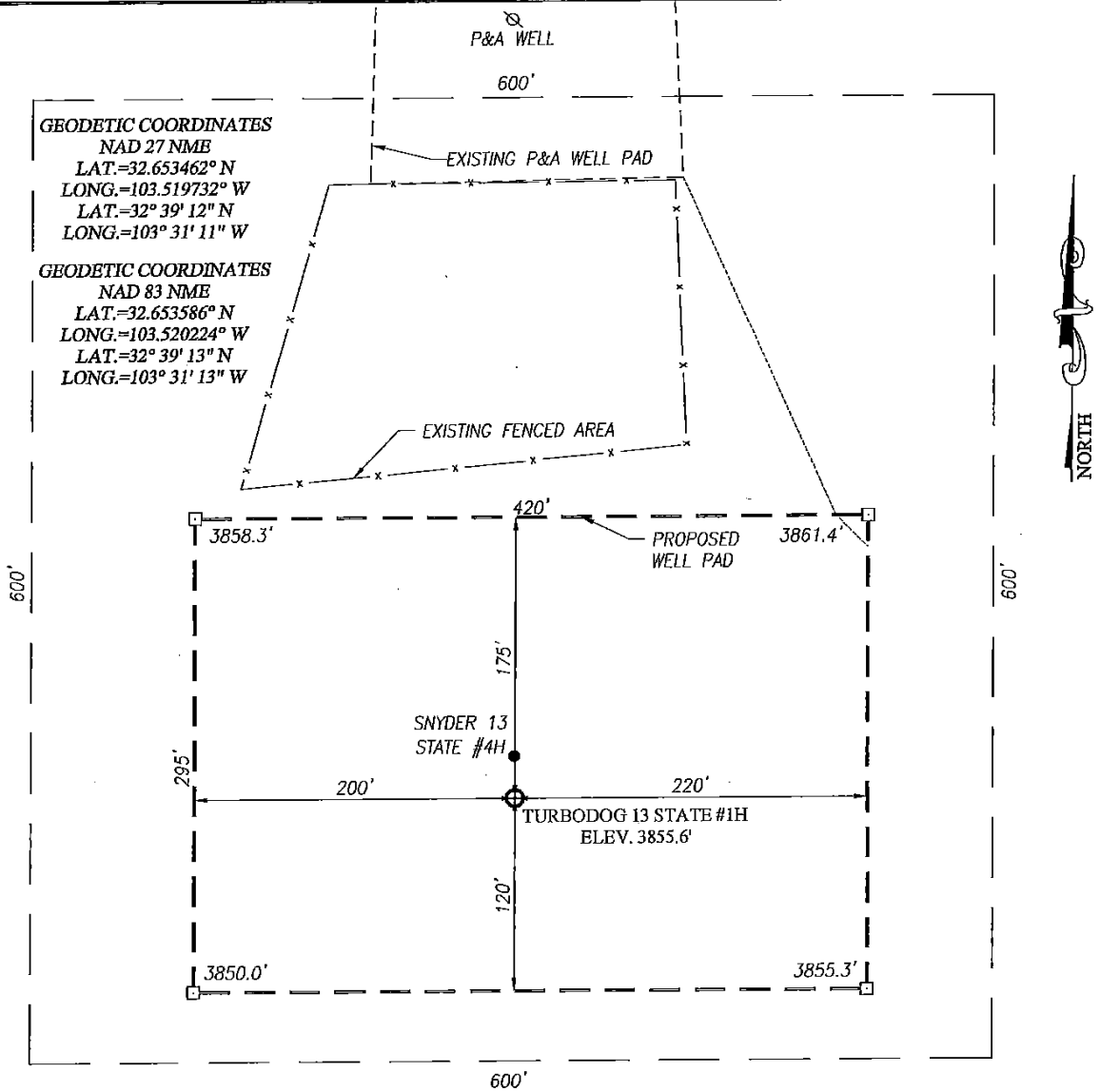
NO ALLOWABLE WILL BE ASSIGNED TO THIS COMPLETION UNTIL ALL INTERESTS HAVE BEEN CONSOLIDATED OR A NON-STANDARD UNIT HAS BEEN APPROVED BY THE DIVISION

	<p>GEODETIC COORDINATES NAD 27 NME BOTTOM HOLE LOCATION Y=607170.3 N X=750368.8 E</p> <p>LAT.=32.666574° N LONG.=103.519749° W</p>	<p>GEODETIC COORDINATES NAD 83 NME BOTTOM HOLE LOCATION Y=607234.0 N X=791548.9 E</p> <p>LAT.=32.666698° N LONG.=103.520241° W</p>	<p>OPERATOR CERTIFICATION</p> <p>I hereby certify that the information herein is true and complete to the best of my knowledge and belief, and that this organization either owns a working interest or unleased mineral interest in the land including the proposed bottom hole location or has a right to drill this well at this location pursuant to a contract with an owner of such mineral or working interest, or to a voluntary pooling agreement or a compulsory pooling order heretofore entered by the division.</p> <p><i>Michelle Cooper</i> 10-13-14 Signature Date</p> <p><i>Michelle Cooper</i> Printed Name</p> <p><i>michelle.cooper@apachecorp.com</i> E-mail Address</p>	
	<p>CORNER COORDINATES TABLE NAD 27 NME</p> <p>A - Y=607493.8 N, X=749706.1 E B - Y=607506.6 N, X=751026.7 E C - Y=602227.6 N, X=751072.6 E D - Y=602212.6 N, X=749752.3 E</p>	<p>CORNER COORDINATES TABLE NAD 83 NME</p> <p>A - Y=607557.5 N, X=790886.2 E B - Y=607570.4 N, X=792206.8 E C - Y=602291.2 N, X=792252.9 E D - Y=602276.2 N, X=790932.6 E</p>		<p>SURVEYOR CERTIFICATION</p> <p>I hereby certify that the well location shown on this plat was plotted from field notes of actual surveys made by me or under my supervision, and that the same is true and correct to the best of my belief.</p> <p>OCTOBER 2, 2014</p> <p>Date of Survey</p> <p>Signature of Professional Surveyor: <i>Carl G. Eidson</i></p> <p>3239</p> <p>10/10/2014</p> <p>Certification Number: Carl G. Eidson 12641 Ronald J. Eidson 3239</p>
	<p>GEODETIC COORDINATES NAD 27 NME SURFACE LOCATION Y=602400.0 N X=750410.7 E</p> <p>LAT.=32.653462° N LONG.=103.519732° W</p>	<p>GEODETIC COORDINATES NAD 83 NME SURFACE LOCATION Y=602463.6 N X=791590.9 E</p> <p>LAT.=32.653586° N LONG.=103.520224° W</p>		
	<p>LAT.=32° 39' 12" N LONG.=103° 31' 11" W</p>	<p>LAT.=32° 39' 13" N LONG.=103° 31' 13" W</p>		

ACK JWSC W.O.: 14 11.1037

GEODETTIC COORDINATES
 NAD 27 NME
 LAT.=32.653462° N
 LONG.=103.519732° W
 LAT.=32° 39' 12" N
 LONG.=103° 31' 11" W

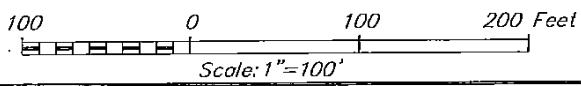
GEODETTIC COORDINATES
 NAD 83 NME
 LAT.=32.653586° N
 LONG.=103.520224° W
 LAT.=32° 39' 13" N
 LONG.=103° 31' 13" W



NOTE:
 SEE "LOCATION VERIFICATION MAP"
 FOR PROPOSED ROAD LOCATION.

DIRECTIONS TO TURBODOG 13 STATE #1H WELL:

FROM THE INTERSECTION OF U.S. HIGHWAY 62-180 AND NORTH PEARL VALLEY ROAD (CO. RD. H43), TURN RIGHT ON CO. RD. H43 AND GO NORTHWEST APPROX. 500 FEET. VEER LEFT AND GO WEST APPROX. 4.3 MILES. PEARL VALLEY PAVEMENT ENDS APPROX. 1.5 MILES AND BECOMES A CO. MAINTENANCE RD. FOLLOW ROAD APPROX. 2 MILES. TURN LEFT AND GO SOUTH APPROX. 0.5 MILES. VEER RIGHT AND GO SOUTHEAST APPROX. 0.12 MILES. VEER LEFT AND GO SOUTH APPROX. 0.33 MILES TO ABANDONED WELL. FOLLOW ACCESS ROAD 230 FEET TO THE LOCATION.



APACHE CORPORATION

TURBODOG 13 STATE #1H WELL
 LOCATED 180 FEET FROM THE SOUTH LINE
 AND 660 FEET FROM THE WEST LINE OF SECTION 13,
 TOWNSHIP 19 SOUTH, RANGE 34 EAST, N.M.P.M.,
 LEA COUNTY, NEW MEXICO

Survey Date: 10/2/14	CAD Date: 10/10/14	Drawn By: ACK
W.O. No.: 14111037	Rev. :	Rel. W.O.:
		Sheet 1 of 1

PROVIDING SURVEYING SERVICES
 SINCE 1946
JOHN WEST SURVEYING COMPANY
 412 N. DAL PASO
 HOBBS, N.M. 88240
 (575) 393-3117 www.jwsc.biz

District I
 1625 N. French Dr., Hobbs, NM 88240
 Phone:(575) 393-6161 Fax:(575) 393-0720
District II
 811 S. First St., Artesia, NM 88210
 Phone:(575) 749-1283 Fax:(575) 748-9720
District III
 1000 Rio Brazos Rd., Aztec, NM 87410
 Phone:(505) 334-6178 Fax:(505) 334-6170
District IV
 1220 S. St Francis Dr., Santa Fe, NM 87505
 Phone:(505) 476-3470 Fax:(505) 476-3462

State of New Mexico
Energy, Minerals and Natural Resources
Oil Conservation Division
1220 S. St Francis Dr.
Santa Fe, NM 87505

Form APD Comments

Permit 194024

PERMIT COMMENTS

Operator Name and Address: APACHE CORP [873] 303 Veterans Airpark Lane Midland, TX 79705	API Number: 30-025-42213
	Well: TURBODOG 13 STATE #001H

Created By	Comment	Comment Date
------------	---------	--------------

District I
 1625 N. French Dr., Hobbs, NM 88240
 Phone:(575) 393-6161 Fax:(575) 393-0720
District II
 811 S. First St., Artesia, NM 88210
 Phone:(575) 749-1283 Fax:(575) 748-9720
District III
 1000 Rio Brazos Rd., Aztec, NM 87410
 Phone:(505) 334-6178 Fax:(505) 334-6170
District IV
 1220 S. St Francis Dr., Santa Fe, NM 87505
 Phone:(505) 476-3470 Fax:(505) 476-3462

State of New Mexico
Energy, Minerals and Natural Resources
Oil Conservation Division
1220 S. St Francis Dr.
Santa Fe, NM 87505

PERMIT CONDITIONS OF APPROVAL

Operator Name and Address: APACHE CORP [873] 303 Veterans Airpark Lane Midland, TX 79705	API Number: 30-025-42213
	Well: TURBODOG 13 STATE #001H

OCD Reviewer	Condition
DMULL	Will require a directional survey with the C-104
DMULL	Once the well is spud, to prevent ground water contamination through whole or partial conduits from the surface, the operator shall drill without interruption through the fresh water zone or zones and shall immediately set in cement the water protection string
pkautz	If using a pit for drilling and completion operations, must have an approved pit from prior to spudding the well.
pkautz	1) SURFACE & INTERMEDIATE CASING - Cement must circulate to surface -- 2) PRODUCTION CASING - Cement must tie back into intermediate casing --
pkautz	If cement does not circulate to surface, must run temperature survey or other log to determine top of cement
pkautz	Surface casing must be set 25' below top of Rustler Anhydrite in order to seal off protectable water