

District I
1625 N. French Dr., Hobbs, NM 88240
Phone:(575) 393-8161 Fax:(575) 393-0720
District II
811 S. First St., Artesia, NM 88210
Phone:(575) 749-1283 Fax:(575) 748-9720
District III
1000 Rio Brazos Rd., Aztec, NM 87410
Phone:(505) 334-8178 Fax:(505) 334-8170
District IV
1220 S. St Francis Dr., Santa Fe, NM 87505
Phone:(505) 476-3470 Fax:(505) 476-3482

State of New Mexico
Energy, Minerals and Natural Resources
Oil Conservation Division
1220 S. St Francis Dr.
Santa Fe, NM 87505

Form C-101
August 1, 2011
Permit 202623

APPLICATION FOR PERMIT TO DRILL, RE-ENTER, DEEPEN, PLUGBACK, OR ADD A ZONE

1. Operator Name and Address CML EXPLORATION, LLC P.O. Box 890 Snyder, TX 79550		2. OGRID Number 256512
		3. API Number 30-025-42511
4. Property Code 303997	5. Property Name PADDY 13 STATE	6. Well No. 002

7. Surface Location

UL - Lot O	Section 13	Township 17S	Range 32E	Lot Idn	Feet From 330	N/S Line S	Feet From 1650	E/W Line E	County Lea
---------------	---------------	-----------------	--------------	---------	------------------	---------------	-------------------	---------------	---------------

8. Proposed Bottom Hole Location

UL - Lot O	Section 13	Township 17S	Range 32E	Lot Idn O	Feet From 330	N/S Line S	Feet From 1650	E/W Line E	County Lea
---------------	---------------	-----------------	--------------	--------------	------------------	---------------	-------------------	---------------	---------------

9. Pool Information

WC-025 G-03 S173318N;YESO	97727
---------------------------	-------

Additional Well Information

11. Work Type New Well	12. Well Type OIL	13. Cable/Rotary	14. Lease Type State	15. Ground Level Elevation 4097
16. Multiple N	17. Proposed Depth 7000	18. Formation Paddock	19. Contractor	20. Spud Date 5/1/2015
Depth to Ground water		Distance from nearest fresh water well		Distance to nearest surface water

☒ We will be using a closed-loop system in lieu of lined pits

21. Proposed Casing and Cement Program

Type	Hole Size	Casing Size	Casing Weight/ft	Setting Depth	Sacks of Cement	Estimated TOC
Surf	12.25	9.625	40	1250	800	0
Prod	8.75	5.5	17	7000	2550	0

Casing/Cement Program: Additional Comments

--

22. Proposed Blowout Prevention Program

Type	Working Pressure	Test Pressure	Manufacturer
Annular	5000	5000	Shaffer
Pipe	5000	5000	Shaffer

<p>23. I hereby certify that the information given above is true and complete to the best of my knowledge and belief. I further certify I have complied with 19.15.14.9 (A) NMAC <input checked="" type="checkbox"/> and/or 19.15.14.9 (B) NMAC <input checked="" type="checkbox"/>, if applicable.</p> <p>Signature: _____</p> <p>Printed Name: Electronically filed by Judy Wilkinson</p> <p>Title: Production Assistant</p> <p>Email Address: wilkinsonj@cmlexp.com</p> <p>Date: 4/10/2015</p>	<p>OIL CONSERVATION DIVISION</p> <p>Approved By: Paul Kautz</p> <p>Title: Geologist</p> <p>Approved Date: 4/10/2015</p> <p>Expiration Date: 4/10/2017</p> <p>Conditions of Approval Attached</p>
---	---

DISTRICT I
1625 N. French Dr., Hobbs, NM 88240
Phone: (575) 393-6161 Fax: (575) 393-0720
DISTRICT II
511 S. First St., Artesia, NM 88210
Phone: (575) 748-1283 Fax: (575) 748-9720
DISTRICT III
1000 Rio Brazos Road, Aztec, NM 87410
Phone: (505) 334-6178 Fax: (505) 334-6170
DISTRICT IV
1220 S. St. Francis Dr., Santa Fe, NM 87505
Phone: (505) 476-3460 Fax: (505) 476-3462

State of New Mexico
Energy, Minerals & Natural Resources Department
OIL CONSERVATION DIVISION
1220 South St. Francis Dr.
Santa Fe, New Mexico 87505

Form C-102
Revised August 1, 2011
Submit one copy to appropriate
District Office

☐ AMENDED REPORT

WELL LOCATION AND ACREAGE DEDICATION PLAT

API Number		Pool Code	Pool Name
		97226	WILDCAT; PADDOCK
Property Code	Property Name		Well Number
303997	PADDY 13 STATE		2
OGRID No.	Operator Name		Elevation
256512	CML EXPLORATION, LLC		4097'

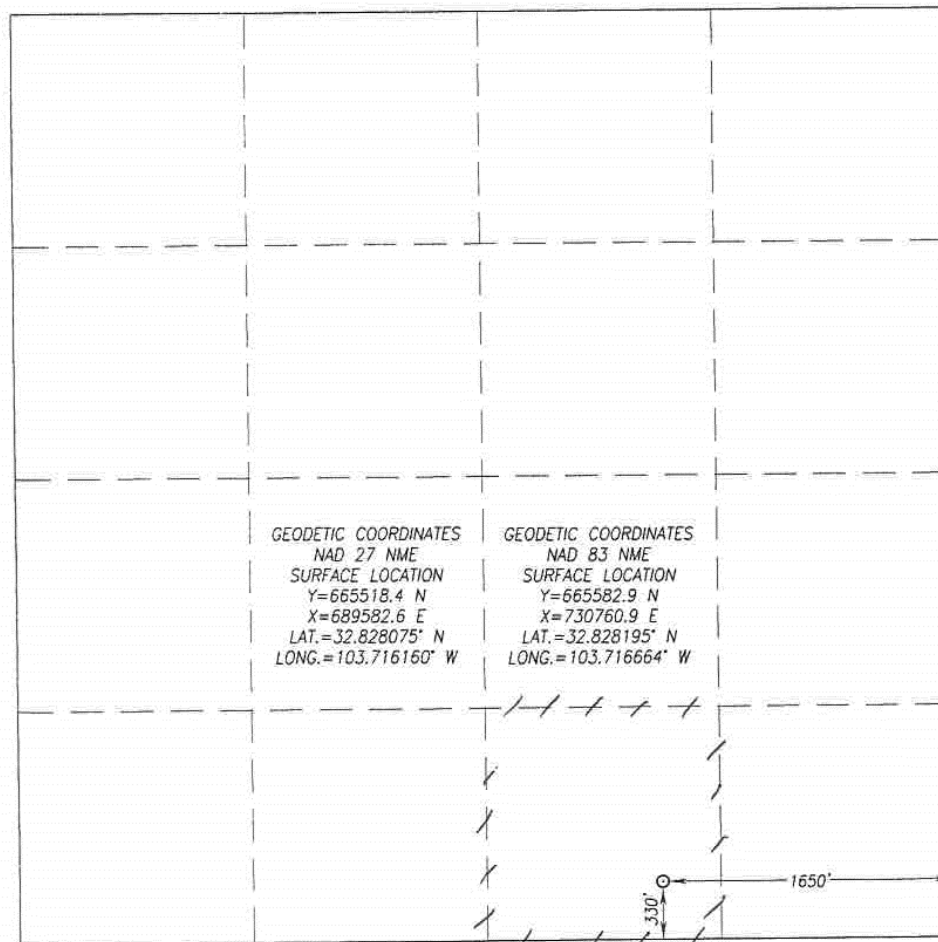
Surface Location

UL or lot No.	Section	Township	Range	Lot Idn	Feet from the	North/South line	Feet from the	East/West line	County
O	13	17-S	32-E		330	SOUTH	1650	EAST	LEA

Bottom Hole Location If Different From Surface

UL or lot No.	Section	Township	Range	Lot Idn	Feet from the	North/South line	Feet from the	East/West line	County
Dedicated Acres		Joint or Infill	Consolidation Code		Order No.				

NO ALLOWABLE WILL BE ASSIGNED TO THIS COMPLETION UNTIL ALL INTERESTS HAVE BEEN CONSOLIDATED OR A NON-STANDARD UNIT HAS BEEN APPROVED BY THE DIVISION



OPERATOR CERTIFICATION

I hereby certify that the information herein is true and complete to the best of my knowledge and belief, and that this organization either owns a working interest or unleased mineral interest in the land including the proposed bottom hole location or has a right to drill this well at this location pursuant to a contract with an owner of such mineral or working interest, or to a voluntary pooling agreement or a compulsory pooling order heretofore entered by the division.

Jordan Owens 4/9/2015
Signature Date

Jordan Owens
Printed Name

owensj@cmlexp.com
E-mail Address

SURVEYOR CERTIFICATION

I hereby certify that the well location shown on this plat was plotted from field notes of actual surveys made by me or under my supervision, and that the same is true and correct to the best of my belief.

FEBRUARY 26, 2015

Date of Survey
Signature & Seal of Professional Surveyor.

Ronald J. Eidson 03/23/2015
Certificate Number Gary G. Eidson 12641
Ronald J. Eidson 3239

ACK JWSC W.O. 15.11.0305

District I
1625 N. French Dr., Hobbs, NM 88240
Phone:(575) 393-6161 Fax:(575) 393-0720
District II
811 S. First St., Artesia, NM 88210
Phone:(575) 748-1283 Fax:(575) 748-9720
District III
1000 Rio Brazos Rd., Aztec, NM 87410
Phone:(505) 334-6178 Fax:(505) 334-6170
District IV
1220 S. St Francis Dr., Santa Fe, NM 87505
Phone:(505) 476-3470 Fax:(505) 476-3482

State of New Mexico
Energy, Minerals and Natural Resources
Oil Conservation Division
1220 S. St Francis Dr.
Santa Fe, NM 87505

Form APD Comments

Permit 202623

PERMIT COMMENTS

Operator Name and Address: CML EXPLORATION, LLC [256512] P.O. Box 890 Snyder, TX 79550	API Number: 30-025-42511
	Well: PADDY 13 STATE #002

Created By	Comment	Comment Date
------------	---------	--------------

District I
1625 N. French Dr., Hobbs, NM 88240
Phone:(575) 393-8161 Fax:(575) 393-0720
District II
811 S. First St., Artesia, NM 88210
Phone:(575) 748-1283 Fax:(575) 748-9720
District III
1000 Rio Brazos Rd., Aztec, NM 87410
Phone:(505) 334-6178 Fax:(505) 334-6170
District IV
1220 S. St Francis Dr., Santa Fe, NM 87505
Phone:(505) 476-3470 Fax:(505) 476-3482

State of New Mexico
Energy, Minerals and Natural Resources
Oil Conservation Division
1220 S. St Francis Dr.
Santa Fe, NM 87505

Form APD Conditions

Permit 202623

PERMIT CONDITIONS OF APPROVAL

Operator Name and Address: CML EXPLORATION, LLC [256512] P.O. Box 890 Snyder, TX 79550	API Number: 30-025-42511
	Well: PADDY 13 STATE #002

OCD Reviewer	Condition
pkautz	Once the well is spud, to prevent ground water contamination through whole or partial conduits from the surface, the operator shall drill without interruption through the fresh water zone or zones and shall immediately set in cement the water protection string
pkautz	If using a pit for drilling and completion operations, must have an approved pit from prior to spudding the well.
pkautz	SURFACE & PRODUCTION CASING - Cement must circulate to surface