

District I
 1625 N. French Dr., Hobbs, NM 88240
 Phone:(575) 393-6161 Fax:(575) 393-0720
District II
 811 S. First St., Artesia, NM 88210
 Phone:(575) 749-1283 Fax:(575) 748-9720
District III
 1000 Rio Brazos Rd., Aztec, NM 87410
 Phone:(505) 334-6178 Fax:(505) 334-6170
District IV
 1220 S. St Francis Dr., Santa Fe, NM 87505
 Phone:(505) 476-3470 Fax:(505) 476-3462

State of New Mexico
Energy, Minerals and Natural Resources
Oil Conservation Division
1220 S. St Francis Dr.
Santa Fe, NM 87505

Form C-101
 August 1, 2011
 Permit 218442

APPLICATION FOR PERMIT TO DRILL, RE-ENTER, DEEPEN, PLUGBACK, OR ADD A ZONE

1. Operator Name and Address APACHE CORP 303 Veterans Airpark Lane Midland, TX 79705		2. OGRID Number 873
		3. API Number 30-025-43125
4. Property Code 37346	5. Property Name WEST BLINEBRY DRINKARD UNIT	6. Well No. 166

7. Surface Location

UL - Lot F	Section 16	Township 21S	Range 37E	Lot Idn F	Feet From 1345	N/S Line N	Feet From 1815	E/W Line W	County Lea
---------------	---------------	-----------------	--------------	--------------	-------------------	---------------	-------------------	---------------	---------------

8. Proposed Bottom Hole Location

UL - Lot F	Section 16	Township 21S	Range 37E	Lot Idn F	Feet From 1345	N/S Line N	Feet From 1815	E/W Line W	County Lea
---------------	---------------	-----------------	--------------	--------------	-------------------	---------------	-------------------	---------------	---------------

9. Pool Information

EUNICE;BLI-TU-DR, NORTH	22900
-------------------------	-------

Additional Well Information

11. Work Type New Well	12. Well Type OIL	13. Cable/Rotary	14. Lease Type State	15. Ground Level Elevation 3481
16. Multiple N	17. Proposed Depth 6900	18. Formation Drinkard	19. Contractor	20. Spud Date
Depth to Ground water		Distance from nearest fresh water well		Distance to nearest surface water

We will be using a closed-loop system in lieu of lined pits

21. Proposed Casing and Cement Program

Type	Hole Size	Casing Size	Casing Weight/ft	Setting Depth	Sacks of Cement	Estimated TOC
Surf	11	8.625	24	1300	450	0
Prod	7.875	5.5	17	6900	900	0

Casing/Cement Program: Additional Comments

--

22. Proposed Blowout Prevention Program

Type	Working Pressure	Test Pressure	Manufacturer
Double Ram	3000	2000	

23. I hereby certify that the information given above is true and complete to the best of my knowledge and belief. I further certify I have complied with 19.15.14.9 (A) NMAC <input checked="" type="checkbox"/> and/or 19.15.14.9 (B) NMAC <input checked="" type="checkbox"/> , if applicable. Signature: Printed Name: Electronically filed by Bobby Smith Title: Email Address: bobby.smith@apachecorp.com Date: 3/17/2016 Phone: 432-818-1020	OIL CONSERVATION DIVISION Approved By: Paul Kautz Title: Geologist Approved Date: 3/18/2016 Expiration Date: 3/18/2018 Conditions of Approval Attached
---	---

District I
1625 N. French Dr., Hobbs, NM 88240
Phone: (575) 393-6161 Fax: (575) 393-0720
District II
811 S. First St., Artesia, NM 88210
Phone: (575) 748-1283 Fax: (575) 748-9720
District III
1000 Rio Brazos Road, Aztec, NM 87410
Phone: (505) 334-6178 Fax: (505) 334-6170
District IV
1220 S. St. Francis Dr., Santa Fe, NM 87505
Phone: (505) 476-3460 Fax: (505) 476-3462

State of New Mexico
Energy, Minerals & Natural Resources Department
OIL CONSERVATION DIVISION
1220 South St. Francis Dr.
Santa Fe, NM 87505

Form C-102
Revised August 1, 2011
Submit one copy to appropriate
District Office

AMENDED REPORT

WELL LOCATION AND ACREAGE DEDICATION PLAT

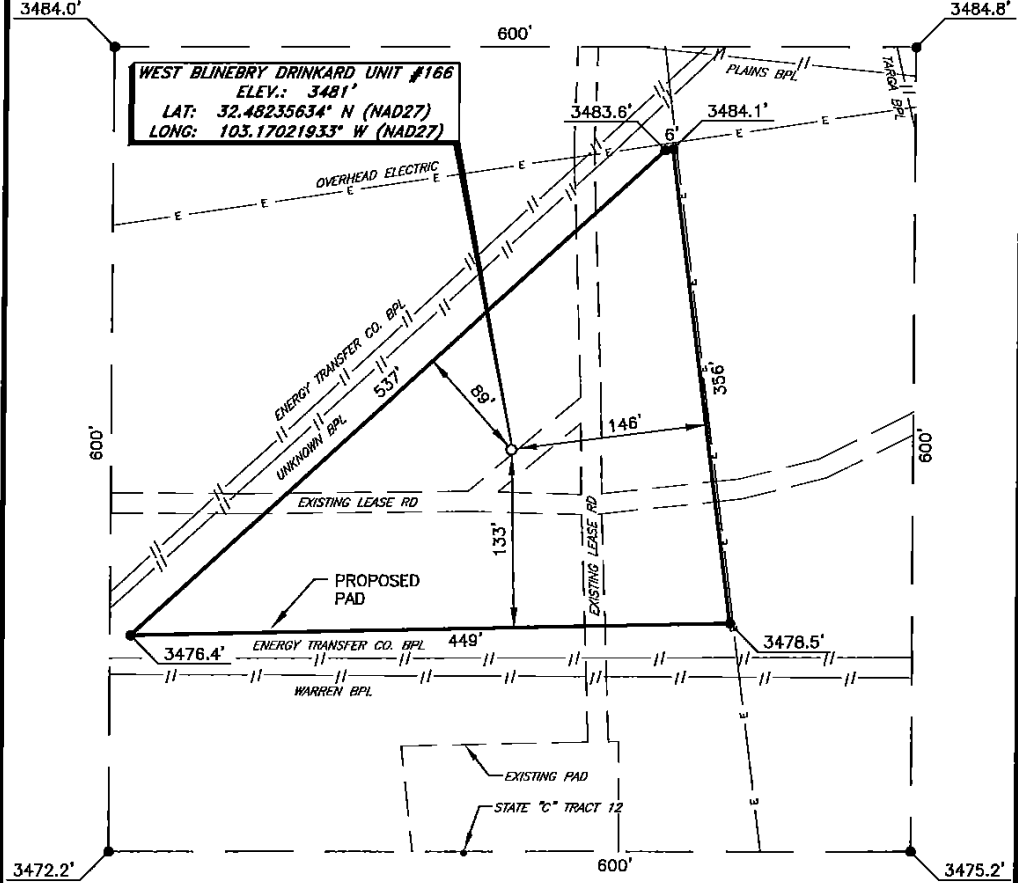
¹ API Number 30-025-		² Pool Code 22900		³ Pool Name EUNICE; BLI-TU-DR, N.					
⁴ Property Code 37346		⁵ Property Name WEST BLINEBRY DRINKARD UNIT			⁶ Well Number 166				
⁷ OGRID NO. 873		⁸ Operator Name APACHE CORPORATION			⁹ Elevation 3481'				
¹⁰ Surface Location									
UL or lot no. F	Section 16	Township 21S	Range 37E	Lot Idn	Feet from the 1345	North/South line NORTH	Feet from the 1815	East/West line WEST	County LEA
¹¹ Bottom Hole Location If Different From Surface									
UL or lot no.	Section	Township	Range	Lot Idn	Feet from the	North/South line	Feet from the	East/West line	County
¹² Dedicated Acres 40		¹³ Joint or Infill		¹⁴ Consolidation Code		¹⁵ Order No.			

No allowable will be assigned to this completion until all interest have been consolidated or a non-standard unit has been approved by the division.

	<p>¹⁶ S 89°26'00" W 2641.97'</p> <p>S 89°26'29" W 2642.13'</p> <p>1345'</p> <p>1815'</p> <p>S. L. SEE DETAIL "A"</p> <p>DETAIL "A"</p> <p>3484.0' 600' 3484.8'</p> <p>600' S. L.</p> <p>3472.2' 3475.2'</p> <p>N 00°39'21" W 5282.96'</p> <p>N 00°40'58" E 5280.21'</p> <p>S 89°22'56" W 2642.97'</p> <p>S 89°25'58" W 2643.61'</p>	<p>¹⁷ OPERATOR CERTIFICATION</p> <p>I hereby certify that the information contained herein is true and complete to the best of my knowledge and belief, and that this organization either owns a working interest or unleased mineral interest in the land including the proposed bottom hole location or has a right to drill this well at this location pursuant to a contract with an owner of such a mineral or working interest, or to a voluntary pooling agreement or a compulsory pooling order heretofore entered by the division.</p> <p>Sorina L Flores 3/17/16 Signature Date Sorina L Flores Printed Name sorina.flores@apachecorp.com E-mail Address</p>
	<p>¹⁸ SURVEYOR CERTIFICATION</p> <p>I hereby certify that the well location shown on this plat was plotted from field notes of actual surveys made by me or under my supervision, and that the same is true and correct to the best of my belief.</p> <p>2-01-216 Date of Survey Signature and Seal of Professional Surveyor 19680 Certificate Number</p>	

RRC - Firm No.: TX 10193838 NM 4655451 - Job No.: LS1601031

**APACHE CORPORATION
WEST BLINEBRY DRINKARD UNIT #166
(1345' FNL & 1815' FWL)
SECTION 16, T21S, R37E
N. M. P. M., LEA COUNTY, NEW MEXICO**



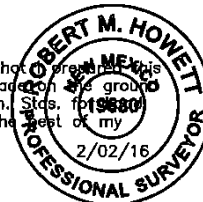
DIRECTIONS TO LOCATION

*From the intersection of NM-207 and CR-49 (Hill Rd.);
Go West on CR-49 approx. 0.2 miles to a curve to a lease road on the left;
Continue West on lease road approx. 0.4 miles to location on the right.*

SCALE: 1" = 100'
0 50 100
BEARINGS ARE
NAD 27 GRID - NM EAST
DISTANCES ARE GROUND

I, R. M. Howett, a N. M. Professional Surveyor, hereby certify that this plat represents an unclassified survey of a well location from an actual survey made on the ground under my direct supervision, said survey and plat meet the Min. Stats. of 19680. Surveying in the State of N. M. and are true and correct to the best of my knowledge and belief.

Robert M. Howett
Robert M. Howett NM PS 19680



Firm No.: TX 10193636 NM 4655451

Copyright 2014 - All Rights Reserved

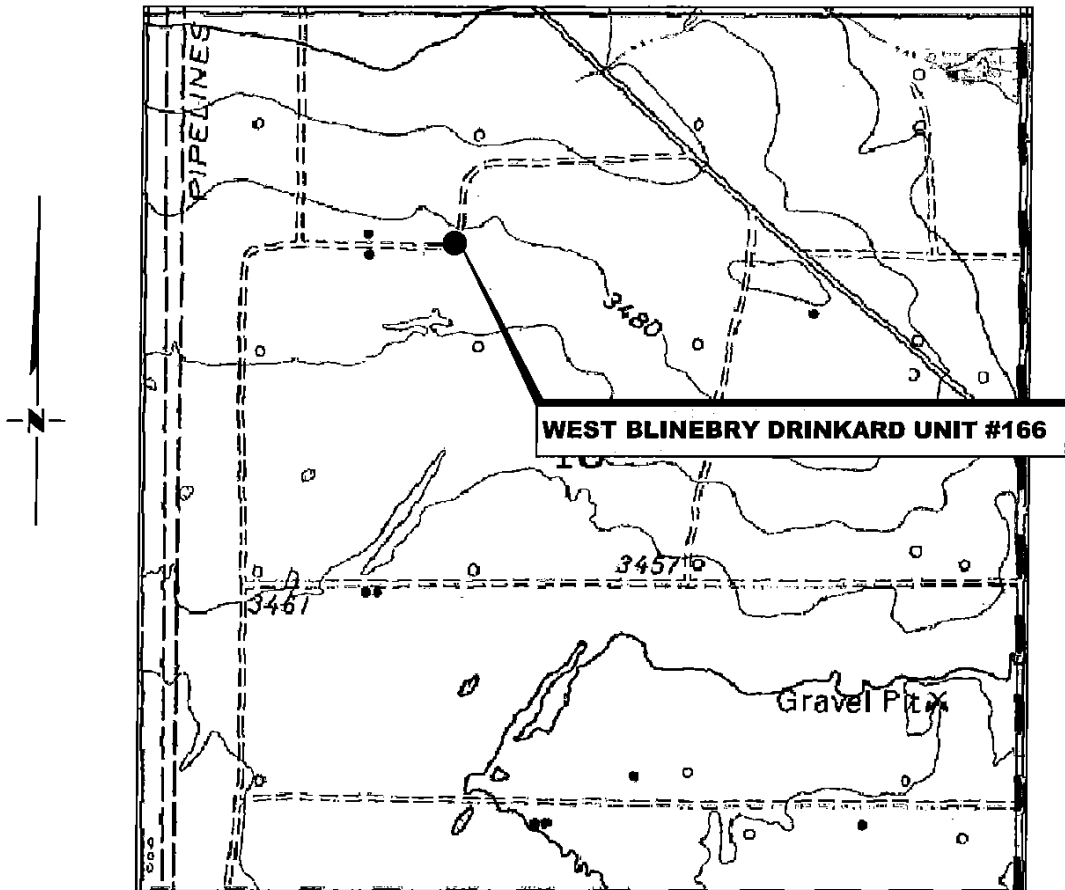
NO.	REVISION	DATE
JOB NO.: LS1601031		
DWG. NO.: 1601031PAD		

RRC

308 W. BROADWAY ST., HOBBS, NM 88240 (575) 964-8200

SCALE: 1" = 100'
DATE: 2-01-2016
SURVEYED BY: BC/HD
DRAWN BY: LPS
APPROVED BY: RMH
SHEET : 1 OF 1

LOCATION VERIFICATION MAP



(Eunice, NM, is located approx. 3.3 miles to the Southeast.)

**SECTION 16, TWP. 21 SOUTH, RGE. 37 EAST,
N. M. P. M., LEA CO., NEW MEXICO**

OPERATOR: Apache Corporation
 LEASE: West Blinebry Drinkard Unit
 WELL NO.: 166
 ELEVATION: 3481'

LOCATION: 1345' FNL & 1815' FWL
 CONTOUR INTERVAL: 10'
 USGS TOPO. SOURCE MAP:
Eunice, NM (1969)

Firm No.: TX 10193838 NM 4655451

Copyright 2015 - All Rights Reserved

NO.	REVISION	DATE
JOB NO.: LS1601031		
DWG. NO.: 1601031LVM		

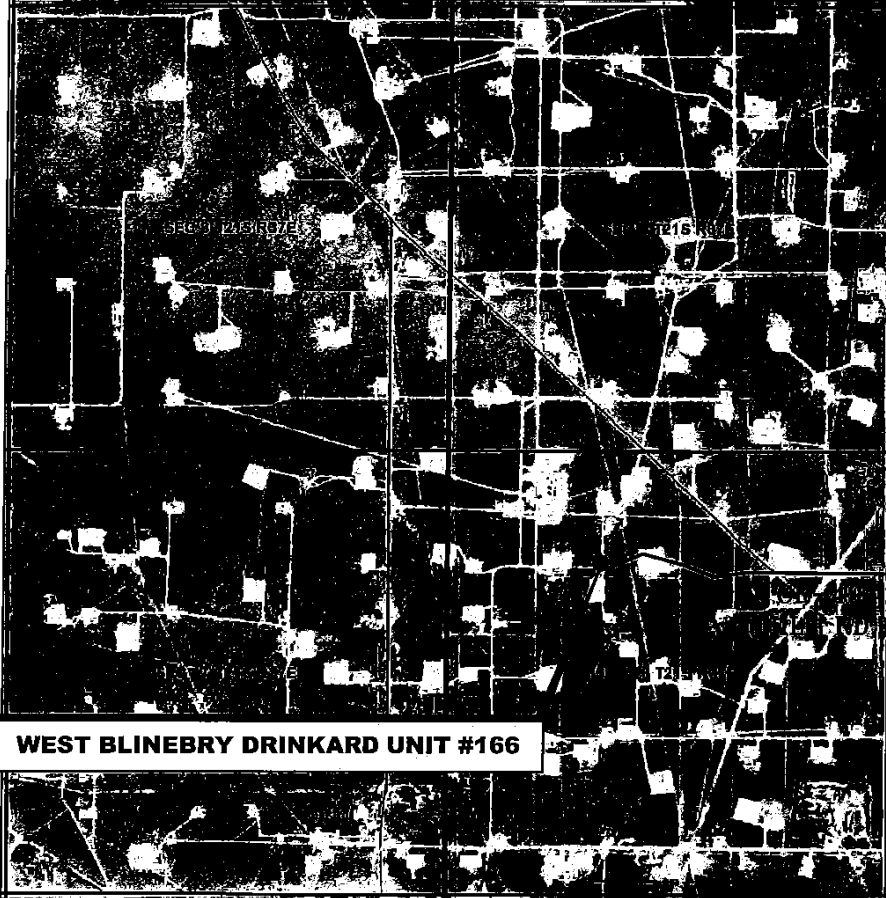
RRC

308 W. BROADWAY ST., HOBBS, NM 88240 (575) 964-8200

SCALE: 1000'
DATE: 2-01-2016
SURVEYED BY: BC/HD
DRAWN BY: LPS
APPROVED BY: RMH
SHEET : 1 OF 1

VICINITY MAP

NOT TO SCALE



*SECTION 16, TWP. 21 SOUTH, RGE. 37 EAST,
N. M. P. M., LEA CO., NEW MEXICO*

OPERATOR: Apache Corporation
 LEASE: West Blinebry Drinkard Unit
 WELL NO.: 166

LOCATION: 1345' FNL & 1815' FWL
 ELEVATION: 3481'

Firm No.: TX 10193838 NM 4655451

Copyright 2014 - All Rights Reserved

NO.	REVISION	DATE
JOB NO.: LS1601031		
DWG. NO.: 1601031VM		

RRC

308 W. BROADWAY ST., HOBBS, NM 88240 (575) 964-8200

SCALE: NTS
DATE: 2-01-2016
SURVEYED BY: BC/HD
DRAWN BY: LPS
APPROVED BY: RMH
SHEET : 1 OF 1

District I
 1625 N. French Dr., Hobbs, NM 88240
 Phone:(575) 393-6161 Fax:(575) 393-0720
District II
 811 S. First St., Artesia, NM 88210
 Phone:(575) 749-1283 Fax:(575) 748-9720
District III
 1000 Rio Brazos Rd., Aztec, NM 87410
 Phone:(505) 334-6178 Fax:(505) 334-6170
District IV
 1220 S. St Francis Dr., Santa Fe, NM 87505
 Phone:(505) 476-3470 Fax:(505) 476-3462

State of New Mexico
Energy, Minerals and Natural Resources
Oil Conservation Division
1220 S. St Francis Dr.
Santa Fe, NM 87505

Form APD Comments

Permit 218442

PERMIT COMMENTS

Operator Name and Address: APACHE CORP [873] 303 Veterans Airpark Lane Midland, TX 79705	API Number: 30-025-43125
	Well: WEST BLINEBRY DRINKARD UNIT #166

Created By	Comment	Comment Date
------------	---------	--------------

District I
 1625 N. French Dr., Hobbs, NM 88240
 Phone:(575) 393-6161 Fax:(575) 393-0720

District II
 811 S. First St., Artesia, NM 88210
 Phone:(575) 748-1283 Fax:(575) 748-9720

District III
 1000 Rio Brazos Rd., Aztec, NM 87410
 Phone:(505) 334-6178 Fax:(505) 334-6170

District IV
 1220 S. St Francis Dr., Santa Fe, NM 87505
 Phone:(505) 476-3470 Fax:(505) 476-3462

State of New Mexico
Energy, Minerals and Natural Resources
Oil Conservation Division
1220 S. St Francis Dr.
Santa Fe, NM 87505

Form APD Conditions

Permit 218442

PERMIT CONDITIONS OF APPROVAL

Operator Name and Address: APACHE CORP [873] 303 Veterans Airpark Lane Midland, TX 79705	API Number: 30-025-43125
	Well: WEST BLINEBRY DRINKARD UNIT #166

OCD Reviewer	Condition
pkautz	Once the well is spud, to prevent ground water contamination through whole or partial conduits from the surface, the operator shall drill without interruption through the fresh water zone or zones and shall immediately set in cement the water protection string
pkautz	If using a pit for drilling and completion operations, must have an approved pit from prior to spudding the well.
pkautz	SURFACE & PRODUCTION CASING - Cement must circulate to surface
pkautz	If cement does not circulate to surface, must run temperature survey or other log to determine top of cement
pkautz	Surface casing must be set 25' below top of Rustler Anhydrite in order to seal off protectable water
pkautz	Must notify OCD Hobbs Office if lost circulation is encountered at 575-370-3186
pkautz	1) Must notify OCD Hobbs Office prior to running Stage Tool at 575-370-3186 2) If using Stage Tool on Surface casing, Stage Tool must be set greater than 350' from surface and a minimum of 200 feet above surface shoe. 3) When using a Stage Tool on Intermediate or Production Casing Stage must be a minimum of 50 feet below previous casing shoe.