

**District I**  
1625 N. French Dr., Hobbs, NM 88240  
Phone:(575) 393-8161 Fax:(575) 393-0720  
**District II**  
811 S. First St., Artesia, NM 88210  
Phone:(575) 748-1283 Fax:(575) 748-9720  
**District III**  
1000 Rio Brazos Rd., Aztec, NM 87410  
Phone:(505) 334-8178 Fax:(505) 334-8170  
**District IV**  
1220 S. St Francis Dr., Santa Fe, NM 87505  
Phone:(505) 476-3470 Fax:(505) 476-3462

**State of New Mexico**  
**Energy, Minerals and Natural Resources**  
**Oil Conservation Division**  
**1220 S. St Francis Dr.**  
**Santa Fe, NM 87505**

Form C-101  
August 1, 2011  
Permit 227978

**APPLICATION FOR PERMIT TO DRILL, RE-ENTER, DEEPEN, PLUGBACK, OR ADD A ZONE**

1. Operator Name and Address XTO ENERGY, INC 9193 S. Jamaica St. Englewood, CO 80155		2. OGRID Number 5380
4. Property Code 317098		3. API Number 30-015-43956
5. Property Name Sizzler State		6. Well No. 001H

**7. Surface Location**

UL - Lot	P	Section	6	Township	25S	Range	29E	Lot Idn	p	Feet From	200	N/S Line	S	Feet From	2440	E/W Line	E	County	Eddy
----------	---	---------	---	----------	-----	-------	-----	---------	---	-----------	-----	----------	---	-----------	------	----------	---	--------	------

**8. Proposed Bottom Hole Location**

UL - Lot	I	Section	31	Township	24S	Range	29E	Lot Idn	I	Feet From	2440	N/S Line	S	Feet From	330	E/W Line	E	County	Eddy
----------	---	---------	----	----------	-----	-------	-----	---------	---	-----------	------	----------	---	-----------	-----	----------	---	--------	------

**9. Pool Information**

WC-015 G-07 S252906P;UPPER WOLFCAMP	98126
-------------------------------------	-------

**Additional Well Information**

11. Work Type New Well	12. Well Type OIL	13. Cable/Rotary	14. Lease Type State	15. Ground Level Elevation 2912
16. Multiple N	17. Proposed Depth 10025	18. Formation Wolfcamp	19. Contractor	20. Spud Date 2/1/2017
Depth to Ground water		Distance from nearest fresh water well		Distance to nearest surface water

☒ We will be using a closed-loop system in lieu of lined pits

**21. Proposed Casing and Cement Program**

Type	Hole Size	Casing Size	Casing Weight/ft	Setting Depth	Sacks of Cement	Estimated TOC
Surf	17.5	13.375	48	300	310	
Int1	12.25	9.625	36	2650	955	
Prod	8.75	7	29	10107	1255	2150
Liner1	6.125	4.5	13.5	9807	610	9107

**Casing/Cement Program: Additional Comments**

--

**22. Proposed Blowout Prevention Program**

Type	Working Pressure	Test Pressure	Manufacturer
Double Ram	5000	5000	Cameron

23. I hereby certify that the information given above is true and complete to the best of my knowledge and belief. I further certify I have complied with 19.15.14.9 (A) NMAC <input checked="" type="checkbox"/> and/or 19.15.14.9 (B) NMAC <input checked="" type="checkbox"/> , if applicable.  Signature: Printed Name: Electronically filed by Janice Farnsworth Title: Regulatory Compliance Tech Email Address: Janice_Farnsworth@xtoenergy.com Date: 11/7/2016	<div style="text-align: center;"><b>OIL CONSERVATION DIVISION</b></div> Approved By: Paul Kautz Title: Geologist Approved Date: 11/22/2016 Expiration Date: 11/22/2018 Conditions of Approval Attached
Phone: 303-397-3676	

DISTRICT I  
1625 N. French Dr., Hobbs, NM 88240  
Phone: (575) 393-6161 Fax: (575) 393-0720

DISTRICT II  
811 S. First St., Artesia, NM 88210  
Phone: (575) 748-1283 Fax: (575) 748-9720

DISTRICT III  
1000 Rio Brazos Road, Aztec, NM 87410  
Phone: (505) 334-6178 Fax: (505) 334-6170

DISTRICT IV  
1220 S. St. Francis Dr., Santa Fe, NM 87505  
Phone: (505) 476-3460 Fax: (505) 476-3462

State of New Mexico  
Energy, Minerals & Natural Resources Department  
OIL CONSERVATION DIVISION  
1220 South St. Francis Dr.  
Santa Fe, New Mexico 87505

Form C-102  
Revised August 1, 2011  
Submit one copy to appropriate  
District Office

☐ AMENDED REPORT

WELL LOCATION AND ACREAGE DEDICATION PLAT

API Number	Pool Code 98126	Pool Name WC-015-607-52529 (Upper Wolfcamp)
Property Code	Property Name SIZZLER STATE	Well Number 1H
OGRID No. 005380	Operator Name XTO ENERGY	Elevation 2912'

Surface Location

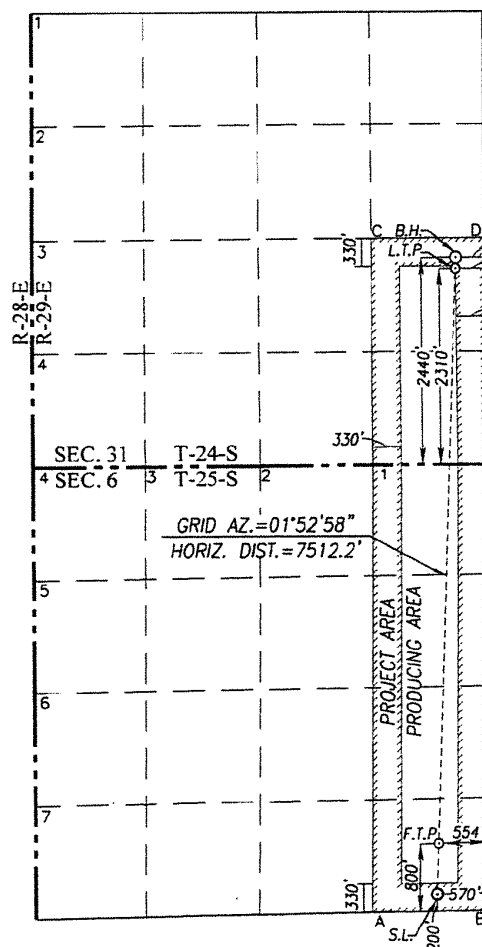
UL or lot No.	Section	Township	Range	Lot Idn	Feet from the	North/South line	Feet from the	East/West line	County
P	6	25-S	29-E		200	SOUTH	570	EAST	EDDY

Bottom Hole Location If Different From Surface

UL or lot No.	Section	Township	Range	Lot Idn	Feet from the	North/South line	Feet from the	East/West line	County
I	31	24-S	29-E		2440	SOUTH	330	EAST	EDDY

Dedicated Acres 239.47	Joint or Infill	Consolidation Code	Order No.
---------------------------	-----------------	--------------------	-----------

NO ALLOWABLE WILL BE ASSIGNED TO THIS COMPLETION UNTIL ALL INTERESTS HAVE BEEN CONSOLIDATED OR A NON-STANDARD UNIT HAS BEEN APPROVED BY THE DIVISION



SCALE: 1"=2000'

<b>GEODETIC COORDINATES</b> NAD 83 NME BOTTOM HOLE LOCATION Y= 426893.1 N X= 639467.2 E LAT.=32.173210° N LONG.=104.016177° W	<b>GEODETIC COORDINATES</b> NAD 27 NME BOTTOM HOLE LOCATION Y= 426834.6 N X= 598283.0 E LAT.=32.173086° N LONG.=104.015689° W
<b>LAST TAKE POINT</b> NAD 83 NME Y= 426763.1 N X= 639462.9 E LAT.=32.172852° N LONG.=104.016192° W	<b>LAST TAKE POINT</b> NAD 27 NME Y= 426704.6 N X= 598278.7 E LAT.=32.172729° N LONG.=104.015704° W
<b>CORNER COORDINATES TABLE</b> NAD 27 NME A - Y= 419114.6 N, X= 597277.1 E B - Y= 419138.4 N, X= 598604.8 E C - Y= 427057.5 N, X= 597288.3 E D - Y= 427063.5 N, X= 598610.7 E	
<b>CORNER COORDINATES TABLE</b> NAD 83 NME A - Y= 419172.9 N, X= 638461.4 E B - Y= 419196.7 N, X= 639789.2 E C - Y= 427116.0 N, X= 638472.5 E D - Y= 427122.1 N, X= 639794.9 E	
<b>FIRST TAKE POINT</b> NAD 83 NME Y= 419986.8 N X= 639240.1 E LAT.=32.154227° N LONG.=104.016976° W	<b>FIRST TAKE POINT</b> NAD 27 NME Y= 419928.5 N X= 598055.8 E LAT.=32.154104° N LONG.=104.016489° W
<b>SURFACE LOCATION</b> NAD 83 NME Y=419386.5 N X=639220.4 E LAT.=32.152577° N LONG.=104.017046° W	<b>SURFACE LOCATION</b> NAD 27 NME Y=419328.2 N X=598036.0 E LAT.=32.152453° N LONG.=104.016558° W

OPERATOR CERTIFICATION

I hereby certify that the information herein is true and complete to the best of my knowledge and belief, and that this organization either owns a working interest or unleased mineral interest in the land including the proposed bottom hole location or has a right to drill this well at this location pursuant to a contract with an owner of such mineral or working interest, or to a voluntary pooling agreement or a compulsory pooling order heretofore entered by the division.

Signature: *Stephanie Rabadue*  
Date: 10-17-16

Printed Name: *Stephanie Rabadue*  
E-mail Address: *stephanie-rabadue@xtoenergy.com*

SURVEYOR CERTIFICATION

I hereby certify that the well location shown on this plat was plotted from field notes of actual surveys made by me or under my supervision, and that the same is true and correct to the best of my belief.

AUGUST 22, 2016

Date of Survey  
Signature & Seal of Professional Surveyor:

*Ronald J. Eidson*  
Certificate Number: Gary G. Eidson 12641  
Ronald J. Eidson 3239  
ACK: JWSC W.O.: 16.110629

**District I**  
1625 N. French Dr., Hobbs, NM 88240  
Phone:(575) 393-6161 Fax:(575) 393-0720  
**District II**  
811 S. First St., Artesia, NM 88210  
Phone:(575) 749-1283 Fax:(575) 749-9720  
**District III**  
1000 Rio Brazos Rd., Aztec, NM 87410  
Phone:(505) 334-6178 Fax:(505) 334-6170  
**District IV**  
1220 S. St Francis Dr., Santa Fe, NM 87505  
Phone:(505) 476-3470 Fax:(505) 476-3462

**State of New Mexico**  
**Energy, Minerals and Natural Resources**  
**Oil Conservation Division**  
**1220 S. St Francis Dr.**  
**Santa Fe, NM 87505**

Form APD Comments

Permit 227978

**PERMIT COMMENTS**

Operator Name and Address: XTO ENERGY, INC [5380] 9193 S. Jamaica St. Englewood, CO 80155		API Number: 30-015-43956
		Well: Sizzler State #001H
Created By	Comment	Comment Date
Kendall Chance	BOP and Chock Manifold diagrams are available if needed. Thank you.	11/7/2016

**District I**  
 1625 N. French Dr., Hobbs, NM 88240  
 Phone:(575) 393-8161 Fax:(575) 393-0720  
**District II**  
 811 S. First St., Artesia, NM 88210  
 Phone:(575) 748-1283 Fax:(575) 748-9720  
**District III**  
 1000 Rio Brazos Rd., Aztec, NM 87410  
 Phone:(505) 334-8178 Fax:(505) 334-6170  
**District IV**  
 1220 S. St Francis Dr., Santa Fe, NM 87505  
 Phone:(505) 476-3470 Fax:(505) 476-3482

**State of New Mexico**  
**Energy, Minerals and Natural Resources**  
**Oil Conservation Division**  
**1220 S. St Francis Dr.**  
**Santa Fe, NM 87505**

Form APD Conditions

Permit 227978

**PERMIT CONDITIONS OF APPROVAL**

Operator Name and Address: XTO ENERGY, INC [5380] 9193 S. Jamaica St. Englewood, CO 80155	API Number: 30-015-43956
	Well: Sizzler State #001H

OCD Reviewer	Condition
pkautz	Will require a directional survey with the C-104
pkautz	Once the well is spud, to prevent ground water contamination through whole or partial conduits from the surface, the operator shall drill without interruption through the fresh water zone or zones and shall immediately set in cement the water protection string
pkautz	If using a pit for drilling and completion operations, must have an approved pit from prior to spudding the well.
pkautz	1) SURFACE & INTERMEDIATE CASING - Cement must circulate to surface -- 2) PRODUCTION CASING - Cement must tie back into intermediate casing -- 3) Liner -- Cement must tie back into production casing
pkautz	Operator shall notify appropriate District office when setting conductor pipe.
pkautz	The Operator is to notify NMOCD by sundry within ten (10) days of spudding a well.
pkautz	It is the operator's responsibility to monitor cancellation dates of approved APDs.
pkautz	If an APD expires and if site construction has occurred, site remediation is required.