

District I
1625 N. French Dr., Hobbs, NM 88240
Phone:(575) 393-8161 Fax:(575) 393-0720
District II
811 S. First St., Artesia, NM 88210
Phone:(575) 748-1283 Fax:(575) 748-9720
District III
1000 Rio Brazos Rd., Aztec, NM 87410
Phone:(505) 334-8178 Fax:(505) 334-8170
District IV
1220 S. St Francis Dr., Santa Fe, NM 87505
Phone:(505) 476-3470 Fax:(505) 476-3482

State of New Mexico
Energy, Minerals and Natural Resources
Oil Conservation Division
1220 S. St Francis Dr.
Santa Fe, NM 87505

Form C-101
August 1, 2011
Permit 227834

APPLICATION FOR PERMIT TO DRILL, RE-ENTER, DEEPEN, PLUGBACK, OR ADD A ZONE

1. Operator Name and Address XTO ENERGY, INC 9193 S. Jamaica St. Englewood, CO 80155		2. OGRID Number 5380
4. Property Code 317085		3. API Number 30-015-43957
5. Property Name CATTLE BARON STATE		6. Well No. 001H

7. Surface Location

UL - Lot	P	Section	6	Township	25S	Range	29E	Lot Idn	p	Feet From	200	N/S Line	S	Feet From	990	E/W Line	E	County	Eddy
----------	---	---------	---	----------	-----	-------	-----	---------	---	-----------	-----	----------	---	-----------	-----	----------	---	--------	------

8. Proposed Bottom Hole Location

UL - Lot	I	Section	31	Township	24S	Range	29E	Lot Idn	I	Feet From	2440	N/S Line	S	Feet From	965	E/W Line	E	County	Eddy
----------	---	---------	----	----------	-----	-------	-----	---------	---	-----------	------	----------	---	-----------	-----	----------	---	--------	------

9. Pool Information

WILLOW LAKE;BONE SPRING, SOUTHEAST	96217
------------------------------------	-------

Additional Well Information

11. Work Type New Well	12. Well Type OIL	13. Cable/Rotary	14. Lease Type State	15. Ground Level Elevation 9850
16. Multiple N	17. Proposed Depth 9650	18. Formation 2nd Bone Spring Sand	19. Contractor	20. Spud Date 4/9/2017
Depth to Ground water		Distance from nearest fresh water well		Distance to nearest surface water

☒ We will be using a closed-loop system in lieu of lined pits

21. Proposed Casing and Cement Program

Type	Hole Size	Casing Size	Casing Weight/ft	Setting Depth	Sacks of Cement	Estimated TOC
Surf	17.5	13.375	48	300	310	0
Int1	12.25	9.625	36	2650	955	0
Prod	8.75	5.5	17	16850	2640	500

Casing/Cement Program: Additional Comments

--

22. Proposed Blowout Prevention Program

Type	Working Pressure	Test Pressure	Manufacturer
Double Ram	5000	5000	Cameron

23. I hereby certify that the information given above is true and complete to the best of my knowledge and belief. I further certify I have complied with 19.15.14.9 (A) NMAC <input checked="" type="checkbox"/> and/or 19.15.14.9 (B) NMAC <input checked="" type="checkbox"/> , if applicable. Signature:	OIL CONSERVATION DIVISION
Printed Name: Electronically filed by Janice Farnsworth	Approved By: Paul Kautz
Title: Regulatory Compliance Tech	Title: Geologist
Email Address: Janice_Farnsworth@xtoenergy.com	Approved Date: 11/23/2016 Expiration Date: 11/23/2018
Date: 11/7/2016 Phone: 303-397-3676	Conditions of Approval Attached

DISTRICT I
1625 N. French Dr., Hobbs, NM 88240
Phone: (575) 393-6161 Fax: (575) 393-0720

DISTRICT II
811 S. First St., Artesia, NM 88210
Phone: (575) 748-1283 Fax: (575) 748-9720

DISTRICT III
1000 Rio Brazos Road, Aztec, NM 87410
Phone: (505) 334-6178 Fax: (505) 334-6170

DISTRICT IV
1220 S. St. Francis Dr., Santa Fe, NM 87505
Phone: (505) 476-3460 Fax: (505) 476-3462

State of New Mexico
Energy, Minerals & Natural Resources Department
OIL CONSERVATION DIVISION
1220 South St. Francis Dr.
Santa Fe, New Mexico 87505

Form C-102
Revised August 1, 2011
Submit one copy to appropriate
District Office

☐ AMENDED REPORT

WELL LOCATION AND ACREAGE DEDICATION PLAT

API Number	Pool Code	Pool Name
	96217	Willow Lake; Bone Spring SE
Property Code	Property Name	Well Number
	CATTLE BARON STATE	1H
OGRID No.	Operator Name	Elevation
005380	XTO ENERGY	2912'

Surface Location

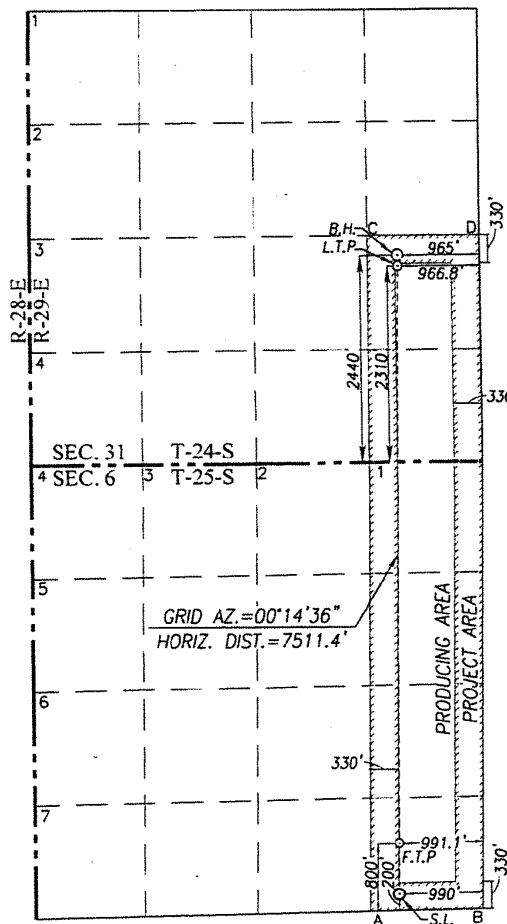
UL or lot No.	Section	Township	Range	Lot Idn	Feet from the	North/South line	Feet from the	East/West line	County
P	6	25-S	29-E		200	SOUTH	990	EAST	EDDY

Bottom Hole Location If Different From Surface

UL or lot No.	Section	Township	Range	Lot Idn	Feet from the	North/South line	Feet from the	East/West line	County
I	31	24-S	29-E		2440	SOUTH	965	EAST	EDDY

Dedicated Acres	Joint or Infill	Consolidation Code	Order No.
239.47			

NO ALLOWABLE WILL BE ASSIGNED TO THIS COMPLETION UNTIL ALL INTERESTS HAVE BEEN CONSOLIDATED OR A NON-STANDARD UNIT HAS BEEN APPROVED BY THE DIVISION



SCALE: 1"=2000'

GEODETIC COORDINATES
NAD 83 NME
BOTTOM HOLE LOCATION
Y= 426888.8 N
X= 638832.3 E
LAT.=32.173203° N
LONG.=104.018229° W

GEODETIC COORDINATES
NAD 27 NME
BOTTOM HOLE LOCATION
Y= 426830.3 N
X= 597648.1 E
LAT.=32.173080° N
LONG.=104.017740° W

LAST TAKE POINT
NAD 83 NME
Y= 426758.8 N
X= 638831.8 E
LAT.=32.172845° N
LONG.=104.018232° W

LAST TAKE POINT
NAD 27 NME
Y= 426700.3 N
X= 597647.6 E
LAT.=32.172722° N
LONG.=104.017743° W

CORNER COORDINATES TABLE

NAD 27 NME
A - Y= 419114.6 N, X= 597277.1 E
B - Y= 419138.4 N, X= 598604.8 E
C - Y= 427057.5 N, X= 597288.3 E
D - Y= 427063.5 N, X= 598610.7 E

CORNER COORDINATES TABLE

NAD 83 NME
A - Y= 419172.9 N, X= 638461.4 E
B - Y= 419196.7 N, X= 639789.2 E
C - Y= 427116.0 N, X= 638472.5 E
D - Y= 427122.1 N, X= 639794.9 E

FIRST TAKE POINT

NAD 83 NME
Y= 419979.0 N
X= 638803.0 E
LAT.=32.154209° N
LONG.=104.018389° W

FIRST TAKE POINT
NAD 27 NME
Y= 419920.6 N
X= 597618.6 E
LAT.=32.154086° N
LONG.=104.017901° W

SURFACE LOCATION

NAD 83 NME
Y= 419379.0 N
X= 638800.4 E
LAT.=32.152560° N
LONG.=104.018403° W

SURFACE LOCATION
NAD 27 NME
Y= 419320.7 N
X= 597616.1 E
LAT.=32.152436° N
LONG.=104.017915° W

OPERATOR CERTIFICATION

I hereby certify that the information herein is true and complete to the best of my knowledge and belief, and that this organization either owns a working interest or unleased mineral interest in the land including the proposed bottom hole location or has a right to drill this well at this location pursuant to a contract with an owner of such mineral or working interest, or to a voluntary pooling agreement or a compulsory pooling order heretofore entered by the division.

Stephanie Rabadiue 10-17-16
Signature Date

Stephanie Rabadiue
Printed Name

Stephanie.rabadiue@xtoenergy.com
E-mail Address

SURVEYOR CERTIFICATION

I hereby certify that the well location shown on this plat was plotted from field notes of actual surveys made by me or under my supervision, and that the same is true and correct to the best of my belief.

AUGUST 22, 2016

Date of Survey

Signature & Seal of Professional Surveyor:

Ronald J. Eidson 9/16/2016
Certificate Number 3239
Gary G. Eidson 12641
Ronald J. Eidson 3239
ACK JWSC W.O.: 16.11.0627

District I
1625 N. French Dr., Hobbs, NM 88240
Phone:(575) 393-6161 Fax:(575) 393-0720
District II
811 S. First St., Artesia, NM 88210
Phone:(575) 749-1283 Fax:(575) 749-9720
District III
1000 Rio Brazos Rd., Aztec, NM 87410
Phone:(505) 334-6178 Fax:(505) 334-6170
District IV
1220 S. St Francis Dr., Santa Fe, NM 87505
Phone:(505) 476-3470 Fax:(505) 476-3462

State of New Mexico
Energy, Minerals and Natural Resources
Oil Conservation Division
1220 S. St Francis Dr.
Santa Fe, NM 87505

Form APD Comments

Permit 227834

PERMIT COMMENTS

Operator Name and Address: XTO ENERGY, INC [5380] 9193 S. Jamaica St. Englewood, CO 80155	API Number: 30-015-43957
	Well: CATTLE BARON STATE #001H

Created By	Comment	Comment Date
------------	---------	--------------

District I
 1625 N. French Dr., Hobbs, NM 88240
 Phone:(575) 393-8161 Fax:(575) 393-0720
District II
 811 S. First St., Artesia, NM 88210
 Phone:(575) 748-1283 Fax:(575) 748-9720
District III
 1000 Rio Brazos Rd., Aztec, NM 87410
 Phone:(505) 334-8178 Fax:(505) 334-6170
District IV
 1220 S. St Francis Dr., Santa Fe, NM 87505
 Phone:(505) 476-3470 Fax:(505) 476-3482

State of New Mexico
Energy, Minerals and Natural Resources
Oil Conservation Division
1220 S. St Francis Dr.
Santa Fe, NM 87505

Form APD Conditions

Permit 227834

PERMIT CONDITIONS OF APPROVAL

Operator Name and Address: XTO ENERGY, INC [5380] 9193 S. Jamaica St. Englewood, CO 80155		API Number: 30-015-43957
		Well: CATTLE BARON STATE #001H
OCD Reviewer	Condition	
pkautz	Will require a directional survey with the C-104	
pkautz	1) SURFACE & INTERMEDIATE CASING - Cement must circulate to surface -- 2) PRODUCTION CASING - Cement must tie back into intermediate casing --	
pkautz	Operator shall notify appropriate District office when setting conductor pipe.	
pkautz	The Operator is to notify NMOCD by sundry within ten (10) days of spudding a well.	
pkautz	It is the operator's responsibility to monitor cancellation dates of approved APDs.	
pkautz	If an APD expires and if site construction has occurred, site remediation is required.	
pkautz	Submit Gas Capture Plan form prior to spudding or initiating recompletion operations	