

**District I**  
1625 N. French Dr., Hobbs, NM 88240  
Phone:(575) 393-8161 Fax:(575) 393-0720  
**District II**  
811 S. First St., Artesia, NM 88210  
Phone:(575) 748-1283 Fax:(575) 748-9720  
**District III**  
1000 Rio Brazos Rd., Aztec, NM 87410  
Phone:(505) 334-8178 Fax:(505) 334-8170  
**District IV**  
1220 S. St Francis Dr., Santa Fe, NM 87505  
Phone:(505) 476-3470 Fax:(505) 476-3482

**State of New Mexico**  
**Energy, Minerals and Natural Resources**  
**Oil Conservation Division**  
**1220 S. St Francis Dr.**  
**Santa Fe, NM 87505**

Form C-101  
August 1, 2011  
Permit 230395

**APPLICATION FOR PERMIT TO DRILL, RE-ENTER, DEEPEN, PLUGBACK, OR ADD A ZONE**

1. Operator Name and Address APACHE CORP 303 Veterans Airpark Lane Midland, TX 79705		2. OGRID Number 873
4. Property Code 37346		3. API Number 30-025-43530
5. Property Name WEST BLINEBRY DRINKARD UNIT		6. Well No. 182

**7. Surface Location**

UL - Lot	Section	Township	Range	Lot Idn	Feet From	N/S Line	Feet From	E/W Line	County
G	17	21S	37E	G	1834	N	1980	E	Lea

**8. Proposed Bottom Hole Location**

UL - Lot	Section	Township	Range	Lot Idn	Feet From	N/S Line	Feet From	E/W Line	County
G	17	21S	37E	G	1834	N	1980	E	Lea

**9. Pool Information**

EUNICE,BLI-TU-DR, NORTH	22900
-------------------------	-------

**Additional Well Information**

11. Work Type New Well	12. Well Type OIL	13. Cable/Rotary	14. Lease Type Private	15. Ground Level Elevation 3479
16. Multiple N	17. Proposed Depth 7000	18. Formation Drinkard	19. Contractor	20. Spud Date 3/1/2017
Depth to Ground water		Distance from nearest fresh water well		Distance to nearest surface water

☐ We will be using a closed-loop system in lieu of lined pits

**21. Proposed Casing and Cement Program**

Type	Hole Size	Casing Size	Casing Weight/ft	Setting Depth	Sacks of Cement	Estimated TOC
Surf	11	8.625	24	1280	300	
Prod	7.875	5.5	17	7000	940	

**Casing/Cement Program: Additional Comments**

--

**22. Proposed Blowout Prevention Program**

Type	Working Pressure	Test Pressure	Manufacturer
Hydril	2000	1200	

23. I hereby certify that the information given above is true and complete to the best of my knowledge and belief. I further certify I have complied with 19.15.14.9 (A) NMAC ☒ and/or 19.15.14.9 (B) NMAC ☒, if applicable.  Signature: _____ Printed Name: Electronically filed by Bobby Smith Title: _____ Email Address: bobby.smith@apachecorp.com Date: 1/3/2017	<div style="text-align: center;"><b>OIL CONSERVATION DIVISION</b></div> Approved By: Paul Kautz Title: Geologist Approved Date: 1/4/2017 Expiration Date: 1/4/2019 Conditions of Approval Attached
Phone: 432-818-1020	

District I  
1625 N. French Dr., Hobbs, NM 88240  
Phone: (575) 393-6161 Fax: (575) 393-0720  
District II  
811 S. First St., Artesia, NM 88210  
Phone: (575) 748-1283 Fax: (575) 748-9720  
District III  
1000 Rio Brazos Road, Aztec, NM 87410  
Phone: (505) 334-6178 Fax: (505) 334-6170  
District IV  
1220 S. St. Francis Dr., Santa Fe, NM 87505  
Phone: (505) 476-3460 Fax: (505) 476-3462

State of New Mexico  
Energy, Minerals & Natural Resources Department  
OIL CONSERVATION DIVISION  
1220 South St. Francis Dr.  
Santa Fe, NM 87505

Form C-102  
Revised August 1, 2011  
Submit one copy to appropriate  
District Office

☐ AMENDED REPORT

WELL LOCATION AND ACREAGE DEDICATION PLAT

<sup>1</sup> API Number 30-025-	<sup>2</sup> Pool Code 22900	<sup>3</sup> Pool Name EUNICE; BLI-TU-DR, NORTH
<sup>4</sup> Property Code 37346	<sup>5</sup> Property Name WEST BLINEBRY DRINKARD UNIT	
<sup>7</sup> GRID NO. 873	<sup>8</sup> Operator Name APACHE CORPORATION	<sup>6</sup> Well Number 182
		<sup>9</sup> Elevation 3479'

<sup>10</sup> Surface Location

UL or lot no.	Section	Township	Range	Lot Idn	Feet from the	North/South line	Feet From the	East/West line	County
G	17	21S	37E		1834	NORTH	1980	EAST	LEA

<sup>11</sup> Bottom Hole Location If Different From Surface

UL or lot no.	Section	Township	Range	Lot Idn	Feet from the	North/South line	Feet from the	East/West line	County

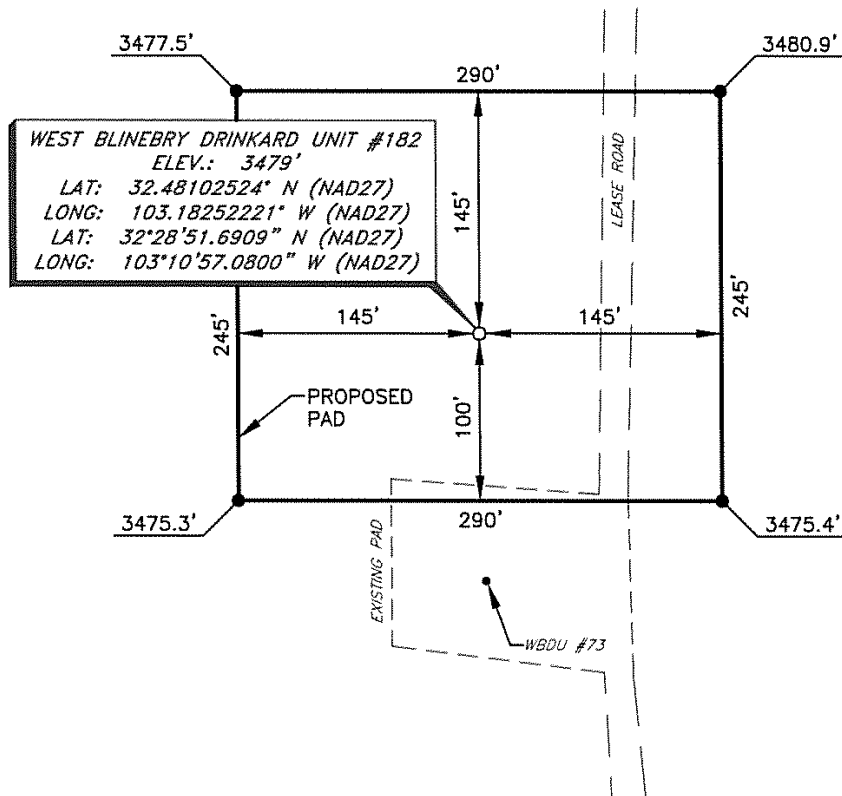
<sup>12</sup> Dedicated Acres 40	<sup>13</sup> Joint or Infill	<sup>14</sup> Consolidation Code	<sup>15</sup> Order No.
-------------------------------------	-------------------------------	----------------------------------	-------------------------

No allowable will be assigned to this completion until all interest have been consolidated or a non-standard unit has been approved by the division.

<p><sup>16</sup> (C)</p> <p>GEODETIC DATA NAD 27 GRID - NM EAST</p> <p>SURFACE LOCATION N: 540624.2 - E: 854880.5 LAT: 32°48'10.2524" N LONG: 103°18'25.2221" W</p> <p>CORNER DATA NAD 27 GRID - NM EAST</p> <p>A: CALCULATED CORNER N: 537145.2 - E: 851619.3</p> <p>B: FOUND BRASS CAP "1911" N: 539785.9 - E: 851590.3</p> <p>C: FOUND BRASS CAP "1911" N: 542424.8 - E: 851561.6</p> <p>D: FOUND BRASS CAP "1911" N: 542451.6 - E: 854200.7</p> <p>E: FOUND BRASS CAP "1911" N: 542476.3 - E: 856839.2</p> <p>F: CALCULATED CORNER N: 537194.4 - E: 856899.7</p> <p>(A)</p>	<p>(D)</p> <p>1834'</p> <p>S. L.</p> <p>1980'</p> <p>(E)</p>	<p><sup>17</sup> OPERATOR CERTIFICATION</p> <p>I hereby certify that the information contained herein is true and complete to the best of my knowledge and belief, and that this organization either owns a working interest or unleased mineral interest in the land including the proposed bottom hole location or has a right to drill this well at this location pursuant to a contract with an owner of such a mineral or working interest, or to a voluntary pooling agreement or a compulsory pooling order heretofore entered by the division.</p> <p>Sorina L Flores 11/3/2017 Signature Date</p> <p>SORINA L. FLORES Printed Name</p> <p>sorina.flores@apachecorp.com E-mail Address</p>
	<p>(F)</p>	<p><sup>18</sup> SURVEYOR CERTIFICATION</p> <p>I hereby certify that the well location shown on this plat was plotted from field notes of actual surveys made by me or under my supervision, and that the same is true and correct to the best of my belief.</p> <p>11-29-2016 Date of Survey</p> <p>Signature and Seal of Professional Surveyor</p> <p>19680 Certificate Number</p>

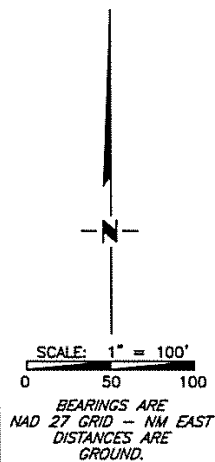
RRC - Firm No.: TX 10193838 NM 4655451 - Job No.: LS1611389

APACHE CORPORATION  
 WEST BLINEBRY DRINKARD UNIT #182  
 (1834' FNL & 1980' FEL)  
 SECTION 17, T21S, R37E  
 N. M. P. M., LEA CO., NEW MEXICO



DIRECTIONS TO LOCATION

*From the intersection of U.S. CR-33 (Turner Rd.) and CR-36 (Curry Rd.):*  
*Go North on CR-33 approx. 0.3 miles to a lease road on the left;*  
*Turn left and go West approx. 0.2 miles to a lease road on the right;*  
*Turn right and go North approx. 0.3 miles, to location.*



Firm No.: TX 10193838 NM 4655451

Copyright 2016 - All Rights Reserved

NO.	REVISION	DATE
JOB NO.:	LS1611389	
DWG. NO.:	1611389PAD	

**RRC**

308 W. BROADWAY ST., HOBBS, NM 88240 (575) 964-8200

SCALE:	1" = 100'
DATE:	11-29-2016
SURVEYED BY:	ML/CG
DRAWN BY:	CMJ
APPROVED BY:	RMH
SHEET:	1 OF 1

**District I**  
1625 N. French Dr., Hobbs, NM 88240  
Phone:(575) 393-6161 Fax:(575) 393-0720  
**District II**  
811 S. First St., Artesia, NM 88210  
Phone:(575) 748-1283 Fax:(575) 748-9720  
**District III**  
1000 Rio Brazos Rd., Aztec, NM 87410  
Phone:(505) 334-6178 Fax:(505) 334-6170  
**District IV**  
1220 S. St Francis Dr., Santa Fe, NM 87505  
Phone:(505) 476-3470 Fax:(505) 476-3462

**State of New Mexico**  
**Energy, Minerals and Natural Resources**  
**Oil Conservation Division**  
**1220 S. St Francis Dr.**  
**Santa Fe, NM 87505**

Form APD Comments

Permit 230395

**PERMIT COMMENTS**

Operator Name and Address: APACHE CORP [873] 303 Veterans Airpark Lane Midland, TX 79705	API Number: 30-025-43530
	Well: WEST BLINEBRY DRINKARD UNIT #182

Created By	Comment	Comment Date
------------	---------	--------------

**District I**  
1625 N. French Dr., Hobbs, NM 88240  
Phone:(575) 393-8161 Fax:(575) 393-0720  
**District II**  
811 S. First St., Artesia, NM 88210  
Phone:(575) 748-1283 Fax:(575) 748-9720  
**District III**  
1000 Rio Brazos Rd., Aztec, NM 87410  
Phone:(505) 334-8178 Fax:(505) 334-6170  
**District IV**  
1220 S. St Francis Dr., Santa Fe, NM 87505  
Phone:(505) 476-3470 Fax:(505) 476-3482

**State of New Mexico**  
**Energy, Minerals and Natural Resources**  
**Oil Conservation Division**  
**1220 S. St Francis Dr.**  
**Santa Fe, NM 87505**

Form APD Conditions

Permit 230395

**PERMIT CONDITIONS OF APPROVAL**

Operator Name and Address: APACHE CORP [873] 303 Veterans Airpark Lane Midland, TX 79705	API Number: 30-025-43530
	Well: WEST BLINEBRY DRINKARD UNIT #182

OCD Reviewer	Condition
pkautz	Pit construction and closure must satisfy all requirements of your approved plan.
pkautz	Once the well is spud, to prevent ground water contamination through whole or partial conduits from the surface, the operator shall drill without interruption through the fresh water zone or zones and shall immediately set in cement the water protection string
pkautz	If using a pit for drilling and completion operations, must have an approved pit from prior to spudding the well.
pkautz	SURFACE & PRODUCTION CASING - Cement must circulate to surface
pkautz	Operator shall notify appropriate District office when setting conductor pipe.
pkautz	The Operator is to notify NMOCDD by sundry (Form C-103) within ten (10) days of spudding a well.
pkautz	It is the operator's responsibility to monitor cancellation dates of approved APDs.
pkautz	If an APD expires and if site construction has occurred, site remediation is required.
pkautz	Must notify OCD Hobbs Office if lost circulation is encountered at 575-370-3186
pkautz	1) Must notify OCD Hobbs Office prior to running Stage Tool at 575-370-3186 2) If using Stage Tool on Surface casing, Stage Tool must be set greater than 350' from surface and a minimum of 200 feet above surface shoe. 3) When using a Stage Tool on Intermediate or Production Casing Stage must be a minimum of 50 feet below previous casing shoe.
pkautz	Submit Gas Capture Plan form prior to spudding or initiating recompletion operations