

District I
1625 N. French Dr., Hobbs, NM 88240
Phone:(575) 393-6161 Fax:(575) 393-0720

District II
811 S. First St., Artesia, NM 88210
Phone:(575) 748-1283 Fax:(575) 748-9720

District III
1000 Rio Brazos Rd., Aztec, NM 87410
Phone:(505) 334-6178 Fax:(505) 334-6170

District IV
1220 S. St Francis Dr., Santa Fe, NM 87505
Phone:(505) 476-3470 Fax:(505) 476-3462

State of New Mexico
Energy, Minerals and Natural Resources
Oil Conservation Division
1220 S. St Francis Dr.
Santa Fe, NM 87505

Form C-101
August 1, 2011
Permit 240212

APPLICATION FOR PERMIT TO DRILL, RE-ENTER, DEEPEN, PLUGBACK, OR ADD A ZONE

1. Operator Name and Address KAISER-FRANCIS OIL CO 6733 S Yale Ave Tulsa, OK, OK 74136		2. OGRID Number 12361
4. Property Code 316706		3. API Number 30-025-44022
5. Property Name BELL LAKE UNIT SOUTH		6. Well No. 419H

7. Surface Location

UL - Lot L	Section 1	Township 24S	Range 33E	Lot Idn L	Feet From 2192	N/S Line S	Feet From 475	E/W Line W	County Lea
---------------	--------------	-----------------	--------------	--------------	-------------------	---------------	------------------	---------------	---------------

8. Proposed Bottom Hole Location

UL - Lot D	Section 36	Township 23S	Range 33E	Lot Idn D	Feet From 330	N/S Line N	Feet From 350	E/W Line W	County Lea
---------------	---------------	-----------------	--------------	--------------	------------------	---------------	------------------	---------------	---------------

9. Pool Information

WC-025 G-09 S243310P;UPPER WOLFCAMP	98135
-------------------------------------	-------

Additional Well Information

11. Work Type New Well	12. Well Type OIL	13. Cable/Rotary	14. Lease Type State	15. Ground Level Elevation 3632
16. Multiple N	17. Proposed Depth 19852	18. Formation Wolfcamp	19. Contractor	20. Spud Date 11/1/2017
Depth to Ground water		Distance from nearest fresh water well		Distance to nearest surface water

☒ We will be using a closed-loop system in lieu of lined pits

21. Proposed Casing and Cement Program

Type	Hole Size	Casing Size	Casing Weight/ft	Setting Depth	Sacks of Cement	Estimated TOC
Surf	17.5	13.375	54.5	1250	1071	0
Int1	12.25	9.625	40	11300	1760	0
Prod	8.75	5.5	20	19852	780	10800

Casing/Cement Program: Additional Comments

--

22. Proposed Blowout Prevention Program

Type	Working Pressure	Test Pressure	Manufacturer
Double Ram	10000	5000	Cameron

23. I hereby certify that the information given above is true and complete to the best of my knowledge and belief. I further certify I have complied with 19.15.14.9 (A) NMAC <input checked="" type="checkbox"/> and/or 19.15.14.9 (B) NMAC <input checked="" type="checkbox"/> if applicable. Signature: _____ Printed Name: Electronically filed by Kristin L Gray Title: _____ Email Address: kristing@kfoc.net Date: 9/18/2017	<p style="text-align: center;">OIL CONSERVATION DIVISION</p> Approved By: Paul Kautz Title: Geologist Approved Date: 9/18/2017 Expiration Date: 9/18/2019 Conditions of Approval Attached
Phone: 918-491-4209	

DISTRICT I
1625 N. French Dr., Hobbs, NM 88240
Phone: (575) 393-6161 Fax: (575) 393-0720
DISTRICT II
811 S. First St., Artesia, NM 88210
Phone: (575) 748-1283 Fax: (575) 748-9720
DISTRICT III
1000 Rio Brazos Road, Aztec, NM 87410
Phone: (505) 334-6178 Fax: (505) 334-6170
DISTRICT IV
1220 S. St. Francis Dr., Santa Fe, NM 87505
Phone: (505) 476-3460 Fax: (505) 476-3462

State of New Mexico
Energy, Minerals & Natural Resources Department
OIL CONSERVATION DIVISION
1220 South St. Francis Dr.
Santa Fe, New Mexico 87505

Form C-102
Revised August 1, 2011
Submit one copy to appropriate
District Office

AMENDED REPORT

WELL LOCATION AND ACREAGE DEDICATION PLAT

API Number	Pool Code	Pool Name
	98135	WC-025 G09 S243310P Upper Wolfcamp
Property Code	Property Name	Well Number
316706	BELL LAKE UNIT SOUTH	419H
OGRID No.	Operator Name	Elevation
12361	KAISER-FRANCIS OIL COMPANY	3632'

Surface Location

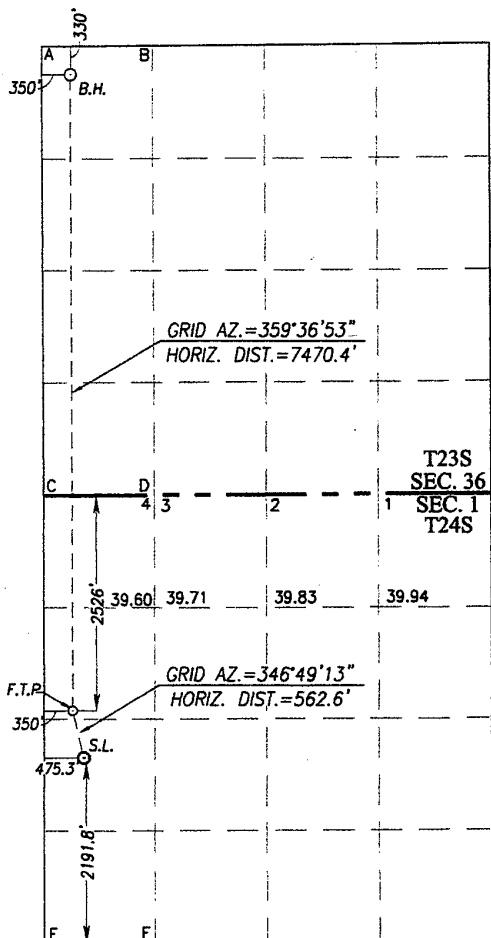
UL or lot No.	Section	Township	Range	Lot Idn	Feet from the	North/South line	Feet from the	East/West line	County
L	1	24-S	33-E		2191.8	SOUTH	475.3	WEST	LEA

Bottom Hole Location If Different From Surface

UL or lot No.	Section	Township	Range	Lot Idn	Feet from the	North/South line	Feet from the	East/West line	County
D	36	23-S	33-E		330	NORTH	350	WEST	LEA
Dedicated Acres	Joint or Infill	Consolidation Code	Order No.						
160									

NO ALLOWABLE WILL BE ASSIGNED TO THIS COMPLETION UNTIL ALL INTERESTS HAVE BEEN CONSOLIDATED OR A NON-STANDARD UNIT HAS BEEN APPROVED BY THE DIVISION

SCALE: 1"=2000'



BOTTOM HOLE LOCATION
NAD 83 NME
Y= 461952.0 N
X= 788568.4 E
LAT.=32.267448° N
LONG.=103.533464° W

BOTTOM HOLE LOCATION
NAD 27 NME
Y= 461892.8 N
X= 747384.7 E
LAT.=32.267324° N
LONG.=103.532985° W

CORNER COORDINATES TABLE

NAD 27 NME
A - Y= 462219.8 N, X= 747032.5 E
B - Y= 462230.8 N, X= 748351.1 E
C - Y= 456947.4 N, X= 747071.8 E
D - Y= 456955.5 N, X= 748391.2 E
E - Y= 451683.5 N, X= 747099.7 E
F - Y= 451688.5 N, X= 748422.0 E

CORNER COORDINATES TABLE

NAD 83 NME
A - Y= 462279.1 N, X= 788216.1 E
B - Y= 462290.0 N, X= 789534.8 E
C - Y= 457006.5 N, X= 788255.6 E
D - Y= 457014.5 N, X= 789575.0 E
E - Y= 451742.4 N, X= 788283.7 E
F - Y= 451747.4 N, X= 789606.0 E

FIRST TAKE POINT
NAD 83 NME
Y= 454483.2 N
X= 788618.6 E
LAT.=32.246918° N
LONG.=103.533482° W

FIRST TAKE POINT
NAD 27 NME
Y= 454424.2 N
X= 747434.7 E
LAT.=32.246794° N
LONG.=103.533003° W

GEODETIC COORDINATES
NAD 83 NME
SURFACE LOCATION
Y= 453935.6 N
X= 788746.9 E
LAT.=32.245410° N
LONG.=103.533080° W

GEODETIC COORDINATES
NAD 27 NME
SURFACE LOCATION
Y= 453876.6 N
X= 747563.0 E
LAT.=32.245286° N
LONG.=103.532602° W

OPERATOR CERTIFICATION

I hereby certify that the information herein is true and complete to the best of my knowledge and belief, and that this organization either owns a working interest or unleased mineral interest in the land including the proposed bottom hole location or has a right to drill this well at this location pursuant to a contract with an owner of such mineral or working interest, or to a voluntary pooling agreement or a compulsory pooling order heretofore entered by the division.

Signature

Date

Charlotte Van Valkenburg

Printed Name

Charlotv@kfoc.net

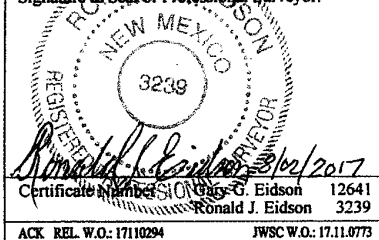
E-mail Address

SURVEYOR CERTIFICATION

I hereby certify that the well location shown on this plat was plotted from field notes of actual surveys made by me or under my supervision, and that the same is true and correct to the best of my belief.

APRIL 11, 2017

Date of Survey
Signature & Seal of Professional Surveyor:



Certificate Number 3239
Ronald J. Eidson

ACK REL. W.O.: 17110294

JWSC W.O.: 17.11.0773

District I
1625 N. French Dr., Hobbs, NM 88240
Phone:(575) 393-6161 Fax:(575) 393-0720
District II
811 S. First St., Artesia, NM 88210
Phone:(575) 748-1283 Fax:(575) 748-9720
District III
1000 Rio Brazos Rd., Aztec, NM 87410
Phone:(505) 334-6178 Fax:(505) 334-6170
District IV
1220 S. St Francis Dr., Santa Fe, NM 87505
Phone:(505) 476-3470 Fax:(505) 476-3462

State of New Mexico
Energy, Minerals and Natural Resources
Oil Conservation Division
1220 S. St Francis Dr.
Santa Fe, NM 87505

Form APD Comments

Permit 240212

PERMIT COMMENTS

Operator Name and Address: KAISER-FRANCIS OIL CO [12361] 6733 S Yale Ave Tulsa, OK, OK 74136		API Number: 30-025-44022
		Well: BELL LAKE UNIT SOUTH #419H
Created By	Comment	Comment Date
pkautz	out of compliance with inactive wells	8/10/2017

District I

1625 N. French Dr., Hobbs, NM 88240
 Phone:(575) 393-6161 Fax:(575) 393-0720

District II

811 S. First St., Artesia, NM 88210
 Phone:(575) 748-1283 Fax:(575) 748-9720

District III

1000 Rio Brazos Rd., Aztec, NM 87410
 Phone:(505) 334-6178 Fax:(505) 334-6170

District IV

1220 S. St Francis Dr., Santa Fe, NM 87505
 Phone:(505) 476-3470 Fax:(505) 476-3462

Form APD Conditions

Permit 240212

State of New Mexico
Energy, Minerals and Natural Resources
Oil Conservation Division
1220 S. St Francis Dr.
Santa Fe, NM 87505

PERMIT CONDITIONS OF APPROVAL

Operator Name and Address: KAISER-FRANCIS OIL CO [12361] 6733 S Yale Ave Tulsa, OK, OK 74136	API Number: 30-025-44022
	Well: BELL LAKE UNIT SOUTH #419H

OCD Reviewer	Condition
pkautz	Once the well is spud, to prevent ground water contamination through whole or partial conduits from the surface, the operator shall drill without interruption through the fresh water zone or zones and shall immediately set in cement the water protection string
pkautz	Will require a directional survey with the C-104
pkautz	If using a pit for drilling and completion operations, must have an approved pit from prior to spudding the well.
pkautz	1) SURFACE & INTERMEDIATE CASING - Cement must circulate to surface -- 2) PRODUCTION CASING - Cement must tie back into intermediate casing --
pkautz	If cement does not circulate to surface, must run temperature survey or other log to determine top of cement
pkautz	Surface casing must be set 25' below top of Rustler Anhydrite in order to seal off protectable water
pkautz	Surface casing must be set 25' below top of Rustler Anhydrite in order to seal off protectable water
pkautz	Operator shall notify appropriate District office when setting conductor pipe.
pkautz	1)- The Operator is to notify NMOCD by sundry (Form C-103) within ten (10) days of the well being spud 2)- Drilling Sundries Form C-103 (Casing and Cement test are to be submitted within 10 days 3)- Completion Reports & Logs are to be submitted within 20 days 4)- Deviation / Directional Drill Survey are to be filed with or prior to C-104
pkautz	If an APD expires and if site construction has occurred, site remediation is required.
pkautz	Stage Tool - 1) Must notify OCD Hobbs Office prior to running Stage Tool at 575-370-3186 2) If using Stage Tool on Surface casing, Stage Tool must be set greater than 350' from surface and a minimum of 200 feet above surface shoe. 3) When using a Stage Tool on Intermediate or Production Casing Stage must be a minimum of 50 feet below previous casing shoe.
pkautz	Gas Capture Plan - Operator to Submit Gas Capture Plan form prior spud or initiating recompletion operations