

**District I**  
1625 N. French Dr., Hobbs, NM 88240  
Phone:(575) 393-6161 Fax:(575) 393-0720

**District II**  
811 S. First St., Artesia, NM 88210  
Phone:(575) 748-1283 Fax:(575) 748-9720

**District III**  
1000 Rio Brazos Rd., Aztec, NM 87410  
Phone:(505) 334-6178 Fax:(505) 334-6170

**District IV**  
1220 S. St Francis Dr., Santa Fe, NM 87505  
Phone:(505) 476-3470 Fax:(505) 476-3462

Form C-101  
August 1, 2011

Permit 251263

**State of New Mexico**  
**Energy, Minerals and Natural Resources**  
**Oil Conservation Division**  
**1220 S. St Francis Dr.**  
**Santa Fe, NM 87505**

**APPLICATION FOR PERMIT TO DRILL, RE-ENTER, DEEPEN, PLUGBACK, OR ADD A ZONE**

1. Operator Name and Address APACHE CORPORATION 303 Veterans Airpark Ln Midland, TX 79705		2. OGRID Number 873
		3. API Number 30-015-44906
4. Property Code 321281	5. Property Name PALMILLO 26 STATE COM	6. Well No. 314H

**7. Surface Location**

UL - Lot H	Section 26	Township 19S	Range 28E	Lot Idn H	Feet From 1620	N/S Line N	Feet From 230	E/W Line E	County Eddy
---------------	---------------	-----------------	--------------	--------------	-------------------	---------------	------------------	---------------	----------------

**8. Proposed Bottom Hole Location**

UL - Lot E	Section 26	Township 19S	Range 28E	Lot Idn E	Feet From 2188	N/S Line N	Feet From 50	E/W Line W	County Eddy
---------------	---------------	-----------------	--------------	--------------	-------------------	---------------	-----------------	---------------	----------------

**9. Pool Information**

WINCHESTER;BONE SPRING	65010
------------------------	-------

**Additional Well Information**

11. Work Type New Well	12. Well Type OIL	13. Cable/Rotary	14. Lease Type State	15. Ground Level Elevation 3350
16. Multiple N	17. Proposed Depth 13632	18. Formation 3rd Bone Spring Sand	19. Contractor	20. Spud Date 8/30/2018
Depth to Ground water		Distance from nearest fresh water well		Distance to nearest surface water

We will be using a closed-loop system in lieu of lined pits

**21. Proposed Casing and Cement Program**

Type	Hole Size	Casing Size	Casing Weight/ft	Setting Depth	Sacks of Cement	Estimated TOC
Surf	17.5	13.375	48	400	285	0
Int1	12.25	9.625	40	8050	1315	0
Prod	8.5	5.5	17	13632	855	9071
Prod	8.75	5.5	17	9071	230	7550

**Casing/Cement Program: Additional Comments**

Please see attachments for contingencies
--

**22. Proposed Blowout Prevention Program**

Type	Working Pressure	Test Pressure	Manufacturer
Annular	3000	1500	
Double Ram	3000	3000	

<p>23. I hereby certify that the information given above is true and complete to the best of my knowledge and belief. I further certify I have complied with 19.15.14.9 (A) NMAC <input checked="" type="checkbox"/> and/or 19.15.14.9 (B) NMAC <input checked="" type="checkbox"/>, if applicable.</p> <p>Signature:</p> <p>Printed Name: Electronically filed by Bobby Smith</p> <p>Title:</p> <p>Email Address: bobby.smith@apachecorp.com</p> <p>Date: 4/24/2018</p>	<p><b>OIL CONSERVATION DIVISION</b></p> <p>Approved By: Raymond Podany</p> <p>Title: Geologist</p> <p>Approved Date: 4/27/2018</p> <p>Expiration Date: 4/27/2020</p> <p>Conditions of Approval Attached</p>
--	---

District I  
1625 N. French Dr., Hobbs, NM 88240  
Phone: (575) 393-6161 Fax: (575) 393-0720  
District II  
811 S. First St., Artesia, NM 88210  
Phone: (575) 748-1283 Fax: (575) 748-9720  
District III  
1000 Rio Brazos Road, Aztec, NM 87410  
Phone: (505) 334-6178 Fax: (505) 334-6170  
District IV  
1220 S. St. Francis Dr., Santa Fe, NM 87505  
Phone: (505) 476-3460 Fax: (505) 476-3462

State of New Mexico  
Energy, Minerals & Natural Resources Department  
OIL CONSERVATION DIVISION  
1220 South St. Francis Dr.  
Santa Fe, NM 87505

Form C-102  
Revised August 1, 2011  
Submit one copy to appropriate  
District Office

AMENDED REPORT

WELL LOCATION AND ACREAGE DEDICATION PLAT

<sup>1</sup> API Number 30-015-	<sup>2</sup> Pool Code 96413	<sup>3</sup> Pool Name PALMILLO; BONESPRING, SW
<sup>4</sup> Property Code	<sup>5</sup> Property Name PALMILLO 26 STATE COM	
<sup>7</sup> OGRID NO. 873	<sup>8</sup> Operator Name APACHE CORPORATION	<sup>6</sup> Well Number 314H
		<sup>9</sup> Elevation 3350'

<sup>10</sup> Surface Location

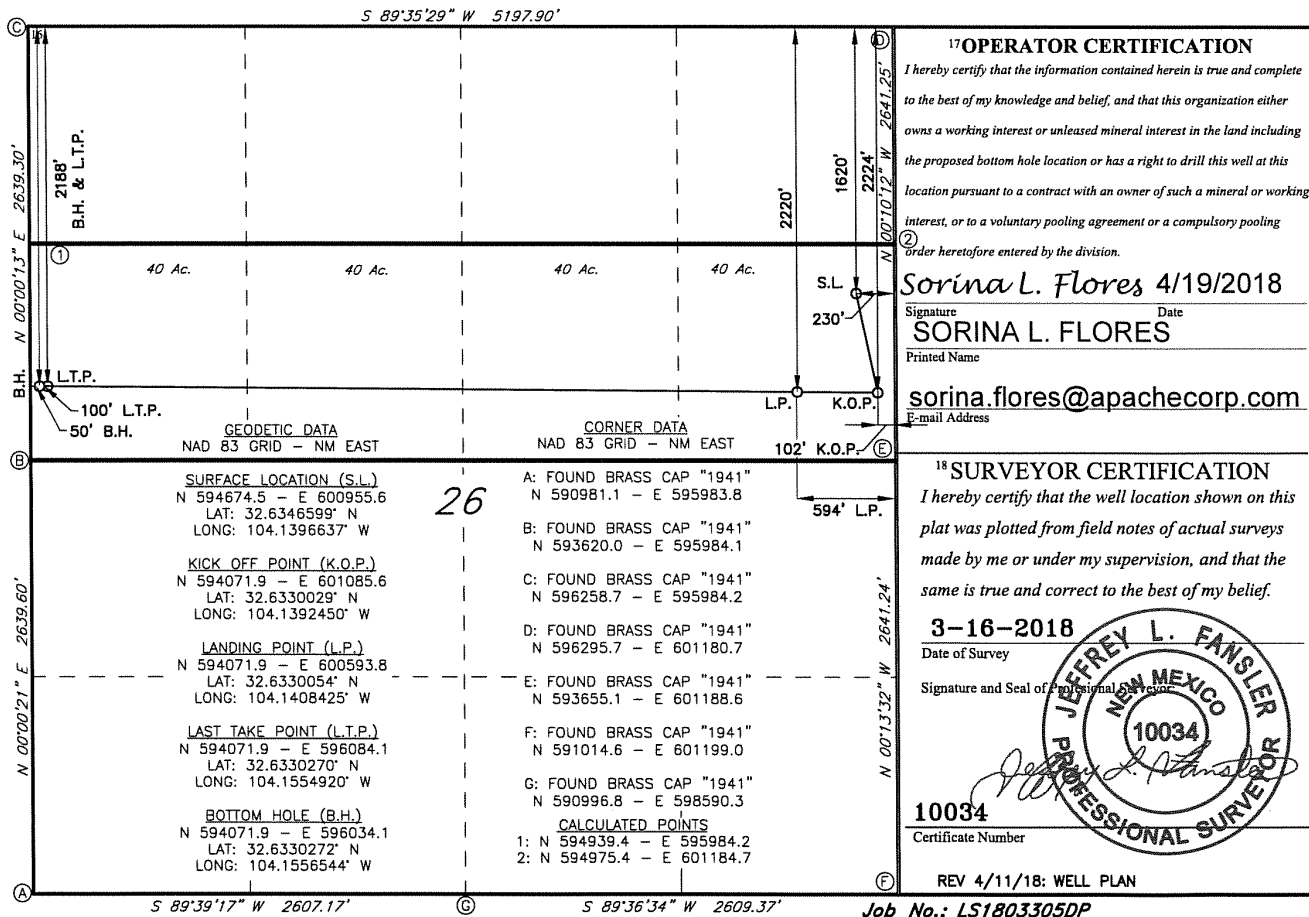
UL or lot no.	Section	Township	Range	Lot Idn	Feet from the	North/South line	Feet From the	East/West line	County
H	26	19S	28E		1620	NORTH	230	EAST	EDDY

<sup>11</sup> Bottom Hole Location If Different From Surface

UL or lot no.	Section	Township	Range	Lot Idn	Feet from the	North/South line	Feet from the	East/West line	County
E	26	19S	28E		2188	NORTH	50	WEST	EDDY

<sup>12</sup> Dedicated Acres 160	<sup>13</sup> Joint or Infill	<sup>14</sup> Consolidation Code	<sup>15</sup> Order No.
--------------------------------------	-------------------------------	----------------------------------	-------------------------

No allowable will be assigned to this completion until all interest have been consolidated or a non-standard unit has been approved by the division.



**District I**  
 1625 N. French Dr., Hobbs, NM 88240  
 Phone:(575) 393-6161 Fax:(575) 393-0720

**District II**  
 811 S. First St., Artesia, NM 88210  
 Phone:(575) 748-1283 Fax:(575) 748-9720

**District III**  
 1000 Rio Brazos Rd., Aztec, NM 87410  
 Phone:(505) 334-6178 Fax:(505) 334-6170

**District IV**  
 1220 S. St Francis Dr., Santa Fe, NM 87505  
 Phone:(505) 476-3470 Fax:(505) 476-3462

**State of New Mexico**  
**Energy, Minerals and Natural Resources**  
**Oil Conservation Division**  
**1220 S. St Francis Dr.**  
**Santa Fe, NM 87505**

**PERMIT COMMENTS**

Operator Name and Address: APACHE CORPORATION [873] 303 Veterans Airpark Ln Midland, TX 79705	API Number: 30-015-44906
	Well: PALMILLO 26 STATE COM #314H

Created By	Comment	Comment Date
sflores	Apache respectfully request approval to utilize spudder rig to drill & pre-set surf hole section. After drtg surf hole, rig will run csg & cmt following all applicable rules & regulations (19.15.16 NMAC drilling & production). Solids control will be handled entirely on closed loop basis. Wellhead will be installed & tested once 13-3/8" surf csg is cut off & WOC time has been reached. A blind flange with same pressure rating as wellhead will be installed to seal wellbore. Pressure will be monitored with pressure gauge installed on wellhead. A means for intervention will be maintained while dri	4/17/2018

**District I**  
 1625 N. French Dr., Hobbs, NM 88240  
 Phone:(575) 393-6161 Fax:(575) 393-0720

**District II**  
 811 S. First St., Artesia, NM 88210  
 Phone:(575) 748-1283 Fax:(575) 748-9720

**District III**  
 1000 Rio Brazos Rd., Aztec, NM 87410  
 Phone:(505) 334-6178 Fax:(505) 334-6170

**District IV**  
 1220 S. St Francis Dr., Santa Fe, NM 87505  
 Phone:(505) 476-3470 Fax:(505) 476-3462

**State of New Mexico**  
**Energy, Minerals and Natural Resources**  
**Oil Conservation Division**  
**1220 S. St Francis Dr.**  
**Santa Fe, NM 87505**

Permit 251263

**PERMIT CONDITIONS OF APPROVAL**

Operator Name and Address: APACHE CORPORATION [873] 303 Veterans Airpark Ln Midland, TX 79705	API Number: 30-015-44906
	Well: PALMILLO 26 STATE COM #314H

OCD Reviewer	Condition
rpodany	Will require a directional survey with the C-104
rpodany	Cement is required to circulate on both surface and intermediate 1 strings of casing