

**District I**  
1625 N. French Dr., Hobbs, NM 88240  
Phone:(575) 393-6161 Fax:(575) 393-0720

**District II**  
811 S. First St., Artesia, NM 88210  
Phone:(575) 748-1283 Fax:(575) 748-9720

**District III**  
1000 Rio Brazos Rd., Aztec, NM 87410  
Phone:(505) 334-6178 Fax:(505) 334-6170

**District IV**  
1220 S. St Francis Dr., Santa Fe, NM 87505  
Phone:(505) 476-3470 Fax:(505) 476-3462

Form C-101  
August 1, 2011

Permit 251325

**State of New Mexico**  
**Energy, Minerals and Natural Resources**  
**Oil Conservation Division**  
**1220 S. St Francis Dr.**  
**Santa Fe, NM 87505**

**APPLICATION FOR PERMIT TO DRILL, RE-ENTER, DEEPEN, PLUGBACK, OR ADD A ZONE**

1. Operator Name and Address ASCENT ENERGY, LLC. 14982 Melco Ave Parker, CO 80134		2. OGRID Number 325830
		3. API Number 30-015-44933
4. Property Code 321300	5. Property Name BUCCANEER EAST STATE	6. Well No. 501H

**7. Surface Location**

UL - Lot A	Section 16	Township 26S	Range 25E	Lot Idn A	Feet From 335	N/S Line N	Feet From 154	E/W Line E	County Eddy
---------------	---------------	-----------------	--------------	--------------	------------------	---------------	------------------	---------------	----------------

**8. Proposed Bottom Hole Location**

UL - Lot B	Section 17	Township 26S	Range 25E	Lot Idn B	Feet From 340	N/S Line N	Feet From 2310	E/W Line E	County Eddy
---------------	---------------	-----------------	--------------	--------------	------------------	---------------	-------------------	---------------	----------------

**9. Pool Information**

WILDCAT;BONE SPRING	96403
---------------------	-------

**Additional Well Information**

11. Work Type New Well	12. Well Type OIL	13. Cable/Rotary	14. Lease Type State	15. Ground Level Elevation 3716
16. Multiple N	17. Proposed Depth 13918	18. Formation Bone Spring	19. Contractor	20. Spud Date 9/1/2018
Depth to Ground water		Distance from nearest fresh water well		Distance to nearest surface water

We will be using a closed-loop system in lieu of lined pits

**21. Proposed Casing and Cement Program**

Type	Hole Size	Casing Size	Casing Weight/ft	Setting Depth	Sacks of Cement	Estimated TOC
Surf	17.5	13.375	54.5	400	350	0
Int1	12.615	9.625	40	1100	400	0
Prod	8.835	5.5	20	13918	3200	0

**Casing/Cement Program: Additional Comments**

--

**22. Proposed Blowout Prevention Program**

Type	Working Pressure	Test Pressure	Manufacturer
Double Ram	3000	3000	

<p>23. I hereby certify that the information given above is true and complete to the best of my knowledge and belief. <b>I further certify I have complied with 19.15.14.9 (A) NMAC <input checked="" type="checkbox"/> and/or 19.15.14.9 (B) NMAC <input checked="" type="checkbox"/> if applicable.</b></p> <p>Signature: _____</p> <p>Printed Name: Electronically filed by Jody C Robins</p> <p>Title: VP Drilling</p> <p>Email Address: jrobins@ascentenergy.us</p> <p>Date: 4/18/2018</p>	<p><b>OIL CONSERVATION DIVISION</b></p> <p>Approved By: Raymond Podany</p> <p>Title: Geologist</p> <p>Approved Date: 5/1/2018</p> <p>Expiration Date: 5/1/2020</p> <p>Conditions of Approval Attached</p>
---	---

**District I**  
1625 N. French Dr., Hobbs, NM 88240  
Phone: (575) 393-6161 Fax: (575) 393-0720

**District II**  
811 S. First St., Artesia, NM 88210  
Phone: (575) 748-1283 Fax: (575) 748-9720

**District III**  
1000 Rio Brazos Road, Aztec, NM 87410  
Phone: (505) 334-6178 Fax: (505) 334-6170

**District IV**  
1220 S. St. Francis Dr., Santa Fe, NM 87505  
Phone: (505) 476-3460 Fax: (505) 476-3462

State of New Mexico  
Energy, Minerals & Natural Resources Department  
**OIL CONSERVATION DIVISION**  
1220 South St. Francis Dr.  
Santa Fe, NM 87505

Form C-102  
Revised August 1, 2011  
Submit one copy to appropriate  
District Office

AMENDED REPORT

**WELL LOCATION AND ACREAGE DEDICATION PLAT**

<sup>1</sup> API Number	<sup>2</sup> Pool Code 96403	<sup>3</sup> Pool Name Wildcat: Bone Spring
<sup>4</sup> Property Code	<sup>5</sup> Property Name BUCCANEER EAST STATE	
<sup>7</sup> OGRID No. 325830	<sup>8</sup> Operator Name ASCENT ENERGY	<sup>6</sup> Well Number 501H
		<sup>9</sup> Elevation 3,716'

<sup>10</sup> Surface Location

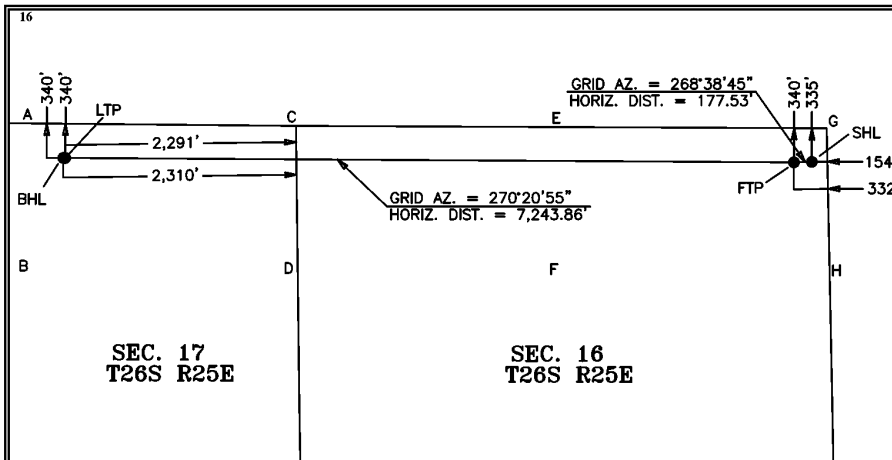
UL or lot no.	Section	Township	Range	Lot Idn	Feet from the	North/South line	Feet from the	East/West line	County
A	16	26 S	25 E		335	NORTH	154	EAST	EDDY

<sup>11</sup> Bottom Hole Location If Different From Surface

UL or lot no.	Section	Township	Range	Lot Idn	Feet from the	North/South line	Feet from the	East/West line	County
B	17	26 S	25 E		340	NORTH	2,310	EAST	EDDY

<sup>12</sup> Dedicated Acres	<sup>13</sup> Joint or Infill	<sup>14</sup> Consolidation Code	<sup>15</sup> Order No.
-------------------------------	-------------------------------	----------------------------------	-------------------------

No allowable will be assigned to this completion until all interests have been consolidated or a non-standard unit has been approved by the division.



**CORNER COORDINATES TABLE**  
NAD 27 NME

A - Y= 381,861.0 N, X= 473,956.6 E
B - Y= 380,526.6 N, X= 473,965.1 E
C - Y= 381,836.2 N, X= 476,578.2 E
D - Y= 380,503.8 N, X= 476,594.6 E
E - Y= 381,823.7 N, X= 479,208.5 E
F - Y= 380,491.9 N, X= 479,230.4 E
G - Y= 381,812.3 N, X= 481,840.9 E
H - Y= 380,480.7 N, X= 481,867.5 E

**CORNER COORDINATES TABLE**  
NAD 83 NME

A - Y= 381,916.9 N, X= 515,139.3 E
B - Y= 380,582.5 N, X= 515,147.8 E
C - Y= 381,892.2 N, X= 517,760.9 E
D - Y= 380,559.7 N, X= 517,777.3 E
E - Y= 381,879.7 N, X= 520,391.2 E
F - Y= 380,547.9 N, X= 520,413.2 E
G - Y= 381,868.4 N, X= 523,023.7 E
H - Y= 380,536.7 N, X= 523,050.3 E

**GEODETIC COORDINATES**  
NAD 27 NME

SURFACE LOCATION
Y= 381,478.0
X= 481,693.0
LAT.= 32.048772°N
LONG.= 104.392420°W

**LAST TAKE POINT**  
NAD 27 NME

Y= 381,517.8
X= 474,290.8
LAT.= 32.048880°N
LONG.= 104.416312°W

**FIRST TAKE POINT**  
NAD 27 NME

Y= 381,473.8
X= 481,515.6
LAT.= 32.048772°N
LONG.= 104.392993°W

**GEODETIC COORDINATES**  
NAD 83 NME

SURFACE LOCATION
Y= 381,534.0
X= 522,875.8
LAT.= 32.048903°N
LONG.= 104.392921°W

**LAST TAKE POINT**  
NAD 83 NME

Y= 381,573.7
X= 515,473.5
LAT.= 32.048999°N
LONG.= 104.416813°W

**FIRST TAKE POINT**  
NAD 83 NME

Y= 381,529.8
X= 522,698.4
LAT.= 32.048891°N
LONG.= 104.393494°W

**<sup>17</sup> OPERATOR CERTIFICATION**

*I hereby certify that the information contained herein is true and complete to the best of my knowledge and belief, and that this organization either owns a working interest or unleased mineral interest in the land including the proposed bottom hole location or has a right to drill this well at this location pursuant to a contract with an owner of such a mineral or working interest, or to a voluntary pooling agreement or a compulsory pooling order heretofore entered by the division.*

*Dean Gimbel*      4/18/18  
Signature      Date

Dean Gimbel  
Printed Name

dgimbel@ascentenergy.us  
E-mail Address

**<sup>18</sup> SURVEYOR CERTIFICATION**

*I hereby certify that the well location shown on this plat was plotted from field notes of actual surveys made by me or under my supervision, and that the same is true and correct to the best of my belief.*

04-17-2018  
Date of Survey

Signature and Seal of Professional Surveyor:

*Mark Dillon Harp*

MARK DILLON HARP 23786      AW      2018010524  
Certificate Number

**District I**  
 1625 N. French Dr., Hobbs, NM 88240  
 Phone:(575) 393-6161 Fax:(575) 393-0720

**District II**  
 811 S. First St., Artesia, NM 88210  
 Phone:(575) 748-1283 Fax:(575) 748-9720

**District III**  
 1000 Rio Brazos Rd., Aztec, NM 87410  
 Phone:(505) 334-6178 Fax:(505) 334-6170

**District IV**  
 1220 S. St Francis Dr., Santa Fe, NM 87505  
 Phone:(505) 476-3470 Fax:(505) 476-3462

**State of New Mexico**  
**Energy, Minerals and Natural Resources**  
**Oil Conservation Division**  
**1220 S. St Francis Dr.**  
**Santa Fe, NM 87505**

Permit 251325

**PERMIT COMMENTS**

Operator Name and Address: ASCENT ENERGY, LLC. [325830] 14982 Melco Ave Parker, CO 80134	API Number: 30-015-44933
	Well: BUCCANEER EAST STATE #501H

Created By	Comment	Comment Date
------------	---------	--------------

**District I**  
1625 N. French Dr., Hobbs, NM 88240  
Phone:(575) 393-6161 Fax:(575) 393-0720

**District II**  
811 S. First St., Artesia, NM 88210  
Phone:(575) 748-1283 Fax:(575) 748-9720

**District III**  
1000 Rio Brazos Rd., Aztec, NM 87410  
Phone:(505) 334-6178 Fax:(505) 334-6170

**District IV**  
1220 S. St Francis Dr., Santa Fe, NM 87505  
Phone:(505) 476-3470 Fax:(505) 476-3462

**State of New Mexico**  
**Energy, Minerals and Natural Resources**  
**Oil Conservation Division**  
**1220 S. St Francis Dr.**  
**Santa Fe, NM 87505**

**PERMIT CONDITIONS OF APPROVAL**

Operator Name and Address: ASCENT ENERGY, LLC. [325830] 14982 Melco Ave Parker, CO 80134	API Number: 30-015-44933
	Well: BUCCANEER EAST STATE #501H

OCD Reviewer	Condition
rpodany	Will require a directional survey with the C-104
rpodany	Cement is required to circulate on both surface and intermediate 1 strings of casing