

District I

1625 N. French Dr., Hobbs, NM 88240
Phone:(575) 393-6161 Fax:(575) 393-0720

District II

811 S. First St., Artesia, NM 88210
Phone:(575) 748-1283 Fax:(575) 748-9720

District III

1000 Rio Brazos Rd., Aztec, NM 87410
Phone:(505) 334-6178 Fax:(505) 334-6170

District IV

1220 S. St Francis Dr., Santa Fe, NM 87505
Phone:(505) 476-3470 Fax:(505) 476-3462

State of New Mexico
Energy, Minerals and Natural Resources
Oil Conservation Division
1220 S. St Francis Dr.
Santa Fe, NM 87505

Form C-101

August 1, 2011

Permit 284185

APPLICATION FOR PERMIT TO DRILL, RE-ENTER, DEEPEN, PLUGBACK, OR ADD A ZONE

1. Operator Name and Address ADVANCE ENERGY PARTNERS HAT MESA, LLC 11490 Westheimer Rd., Ste 950 Houston, TX 77077		2. OGRID Number 372417
		3. API Number 30-025-47423
4. Property Code 319603	5. Property Name MERCHANT STATE UNIT	6. Well No. 604Y

7. Surface Location

UL - Lot C	Section 35	Township 21S	Range 33E	Lot Idn C	Feet From 200	N/S Line N	Feet From 2608	E/W Line W	County Lea
---------------	---------------	-----------------	--------------	--------------	------------------	---------------	-------------------	---------------	---------------

8. Proposed Bottom Hole Location

UL - Lot O	Section 2	Township 22S	Range 33E	Lot Idn O	Feet From 100	N/S Line S	Feet From 2310	E/W Line E	County Lea
---------------	--------------	-----------------	--------------	--------------	------------------	---------------	-------------------	---------------	---------------

9. Pool Information

WC-025 G-06 S213326D;BONE SPRING	97929
----------------------------------	-------

Additional Well Information

11. Work Type New Well	12. Well Type OIL	13. Cable/Rotary	14. Lease Type State	15. Ground Level Elevation 3678
16. Multiple N	17. Proposed Depth 22081	18. Formation Bone Spring	19. Contractor	20. Spud Date 7/9/2020
Depth to Ground water		Distance from nearest fresh water well		Distance to nearest surface water

☐ We will be using a closed-loop system in lieu of lined pits

21. Proposed Casing and Cement Program

Type	Hole Size	Casing Size	Casing Weight/ft	Setting Depth	Sacks of Cement	Estimated TOC
Surf	17.5	13.375	54.5	1600	500	0
Int1	12.25	9.625	40	4000	950	0
Int1	12.25	9.625	40	5300	330	4000
Prod	8.5	5.5	20	19270	2300	0

Casing/Cement Program: Additional Comments

--

22. Proposed Blowout Prevention Program

Type	Working Pressure	Test Pressure	Manufacturer
Double Ram	5000	5000	

23. I hereby certify that the information given above is true and complete to the best of my knowledge and belief. I further certify I have complied with 19.15.14.9 (A) NMAC <input checked="" type="checkbox"/> and/or 19.15.14.9 (B) NMAC <input checked="" type="checkbox"/> if applicable.	OIL CONSERVATION DIVISION	
Signature:		
Printed Name: Electronically filed by David C Harwell	Approved By: Paul F Kautz	
Title: VP Engineering	Title: Geologist	
Email Address: dharwell@advanceenergypartners.com	Approved Date: 7/10/2020	Expiration Date: 7/10/2022
Date: 7/9/2020	Phone: 832-672-4604	Conditions of Approval Attached

DISTRICT I

1625 N. French Dr., Hobbs, NM 88240
Phone (575) 393-6161 Fax: (575) 393-0720

DISTRICT II

811 S. First St., Artesia, NM 88210
Phone (575) 748-1283 Fax: (575) 748-9720

DISTRICT III

1000 Rio Brazos Rd., Aztec, NM 87410
Phone (505) 334-6178 Fax: (505) 334-6170

DISTRICT IV

1220 S. St. Francis Dr., Santa Fe, NM 87505
Phone (505) 476-3480 Fax: (505) 476-3482State of New Mexico
Energy, Minerals and Natural Resources Department

Form C-102

Revised August 4, 2011

Submit one copy to appropriate
District Office

OIL CONSERVATION DIVISION

1220 South St. Francis Dr.
Santa Fe, New Mexico 87505☐ AMENDED REPORT

WELL LOCATION AND ACREAGE DEDICATION PLAT

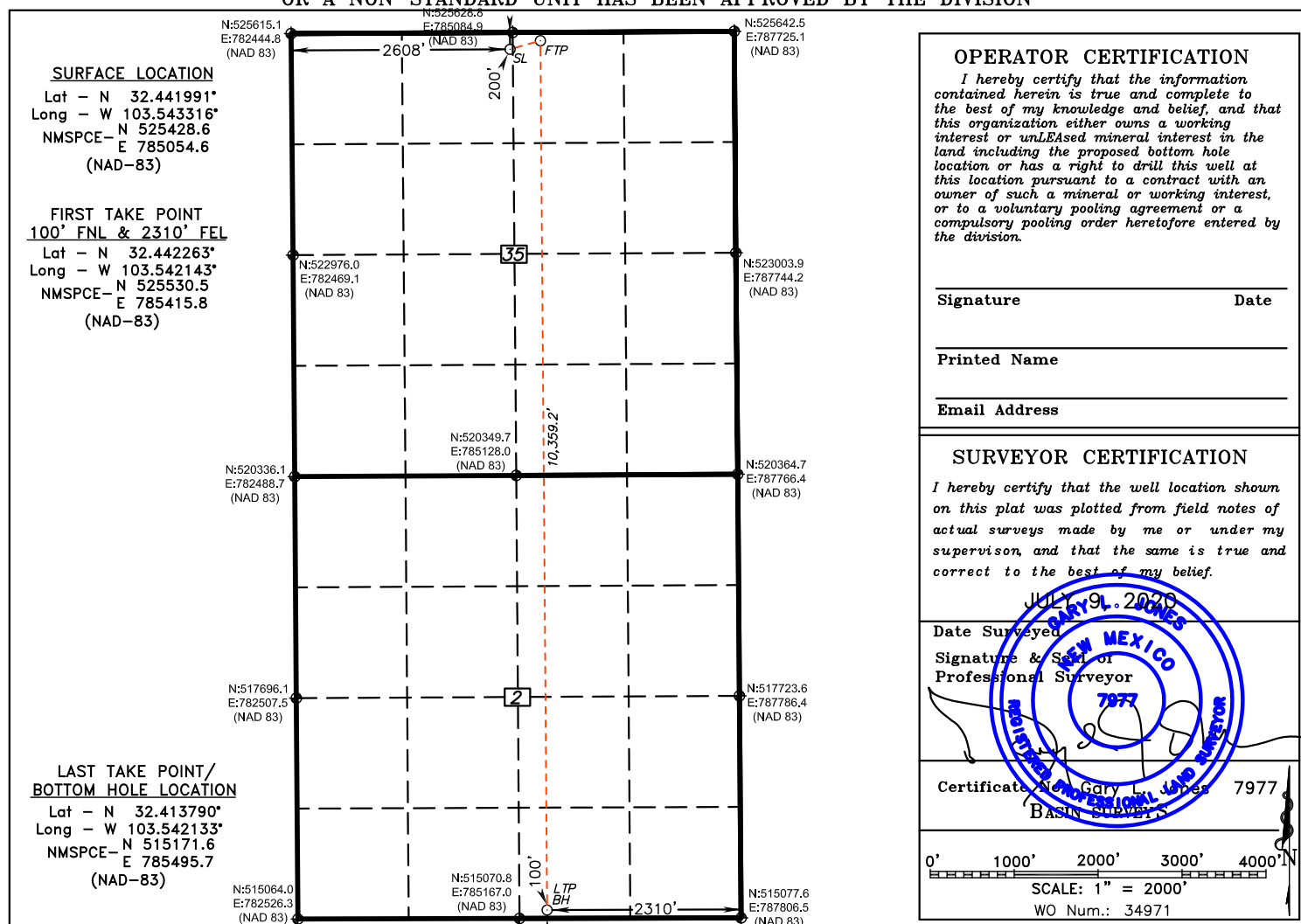
API Number	Pool Code	Pool Name
		WC-025 G-06 S213326D; BONE SPRING
Property Code 319603	Property Name MERCHANT STATE UNIT	Well Number 604Y
OGRID No. 372417	Operator Name ADVANCE ENERGY PARTNERS HAT MESA	Elevation 3678'

Surface Location

UL or lot No.	Section	Township	Range	Lot Idn	Feet from the	SOUTH/South line	Feet from the	East/West line	County
C	35	21 S	33 E		200	NORTH	2608	WEST	LEA

Bottom Hole Location If Different From Surface

UL or lot No.	Section	Township	Range	Lot Idn	Feet from the	SOUTH/South line	Feet from the	East/West line	County
O	2	22 S	33 E		100	SOUTH	2310	EAST	LEA
Dedicated Acres	Joint or Infill	Consolidation Code	Order No.						

NO ALLOWABLE WILL BE ASSIGNED TO THIS COMPLETION UNTIL ALL INTERESTS HAVE BEEN CONSOLIDATED
OR A NON-STANDARD UNIT HAS BEEN APPROVED BY THE DIVISION

District I

1625 N. French Dr., Hobbs, NM 88240
Phone:(575) 393-6161 Fax:(575) 393-0720

District II

811 S. First St., Artesia, NM 88210
Phone:(575) 748-1283 Fax:(575) 748-9720

District III

1000 Rio Brazos Rd., Aztec, NM 87410
Phone:(505) 334-6178 Fax:(505) 334-6170

District IV

1220 S. St Francis Dr., Santa Fe, NM 87505
Phone:(505) 476-3470 Fax:(505) 476-3462

State of New Mexico
Energy, Minerals and Natural Resources
Oil Conservation Division
1220 S. St Francis Dr.
Santa Fe, NM 87505

GAS CAPTURE PLAN

Date: 7/10/2020

☒ Original

Operator & OGRID No.: [372417] ADVANCE ENERGY PARTNERS HAT MESA, LLC

☐ Amended - Reason for
Amendment: _____

This Gas Capture Plan outlines actions to be taken by the Operator to reduce well/production facility flaring/venting for new completion (new drill, recomple to new zone, re-frac) activity.

Note: Form C-129 must be submitted and approved prior to exceeding 60 days allowed by Rule (Subsection A of 19.15.18.12 NMAC).

Well(s)/Production Facility – Name of facility

The well(s) that will be located at the production facility are shown in the table below.

Well Name	API	Well Location (ULSTR)	Footages	Expected MCF/D	Flared or Vented	Comments
MERCHANT STATE UNIT #604Y	30-025-47423	C-35-21S-33E	0200N 2608W	1000	Flared	Flare during initial testing and cleanup

Gathering System and Pipeline Notification

Well(s) will be connected to a production facility after flowback operations are complete, if gas transporter system is in place. The gas produced from production facility is dedicated to TARGA MIDSTREAM SERVICES LLC and will be connected to TARGA MIDSTREAM SERVICES LLC Low Pressure gathering system located in Lea County, New Mexico. It will require 1500' of pipeline to connect the facility to Low Pressure gathering system. ADVANCE ENERGY PARTNERS HAT MESA, LLC provides (periodically) to TARGA MIDSTREAM SERVICES LLC a drilling, completion and estimated first production date for wells that are scheduled to be drilled in the foreseeable future. In addition, ADVANCE ENERGY PARTNERS HAT MESA, LLC and TARGA MIDSTREAM SERVICES LLC have periodic conference calls to discuss changes to drilling and completion schedules. Gas from these wells will be processed at TARGA MIDSTREAM SERVICES LLC Processing Plant located in Sec. 36, Twn. 19S, Rng. 36E, Lea County, New Mexico. The actual flow of the gas will be based on compression operating parameters and gathering system pressures.

Flowback Strategy

After the fracture treatment/completion operations, well(s) will be produced to temporary production tanks and gas will be flared or vented. During flowback, the fluids and sand content will be monitored. When the produced fluids contain minimal sand, the wells will be turned to production facilities. Gas sales should start as soon as the wells start flowing through the production facilities, unless there are operational issues on TARGA MIDSTREAM SERVICES LLC system at that time. Based on current information, it is ADVANCE ENERGY PARTNERS HAT MESA, LLC's belief the system can take this gas upon completion of the well(s).

Safety requirements during cleanout operations from the use of underbalanced air cleanout systems may necessitate that sand and non-pipeline quality gas be vented and/or flared rather than sold on a temporary basis.

Alternatives to Reduce Flaring

Below are alternatives considered from a conceptual standpoint to reduce the amount of gas flared.

- Power Generation – On lease
 - Only a portion of gas is consumed operating the generator, remainder of gas will be flared
- Compressed Natural Gas – On lease
 - Gas flared would be minimal, but might be uneconomical to operate when gas volume declines
- NGL Removal – On lease
 - Plants are expensive, residue gas is still flared, and uneconomical to operate when gas volume declines

District I
1625 N. French Dr., Hobbs, NM 88240
Phone:(575) 393-6161 Fax:(575) 393-0720

District II
811 S. First St., Artesia, NM 88210
Phone:(575) 748-1283 Fax:(575) 748-9720

District III
1000 Rio Brazos Rd., Aztec, NM 87410
Phone:(505) 334-6178 Fax:(505) 334-6170

District IV
1220 S. St Francis Dr., Santa Fe, NM 87505
Phone:(505) 476-3470 Fax:(505) 476-3462

State of New Mexico
Energy, Minerals and Natural Resources
Oil Conservation Division
1220 S. St Francis Dr.
Santa Fe, NM 87505

Form APD Comments

Permit 284185

PERMIT COMMENTS

Operator Name and Address: ADVANCE ENERGY PARTNERS HAT MESA, LLC [372417] 11490 Westheimer Rd., Ste 950 Houston, TX 77077		API Number: 30-025-47423
		Well: MERCHANT STATE UNIT #604Y

Created By	Comment	Comment Date
------------	---------	--------------

District I

1625 N. French Dr., Hobbs, NM 88240
Phone:(575) 393-6161 Fax:(575) 393-0720

District II

811 S. First St., Artesia, NM 88210
Phone:(575) 748-1283 Fax:(575) 748-9720

District III

1000 Rio Brazos Rd., Aztec, NM 87410
Phone:(505) 334-6178 Fax:(505) 334-6170

District IV

1220 S. St Francis Dr., Santa Fe, NM 87505
Phone:(505) 476-3470 Fax:(505) 476-3462

State of New Mexico
Energy, Minerals and Natural Resources
Oil Conservation Division
1220 S. St Francis Dr.
Santa Fe, NM 87505

Form APD Conditions

Permit 284185

PERMIT CONDITIONS OF APPROVAL

Operator Name and Address: ADVANCE ENERGY PARTNERS HAT MESA, LLC [372417] 11490 Westheimer Rd., Ste 950 Houston, TX 77077	API Number: 30-025-47423
	Well: MERCHANT STATE UNIT #604Y

OCD Reviewer	Condition
pkautz	Will require a directional survey with the C-104
pkautz	Potash Area - Three String Casing Program - In accordance with R-111-P all strings shall be cemented to surface. Salt Protection String - If the cement fails to reach the surface or the bottom of the cellar, where required, the top of the cement shall be located by a temperature or other survey and additional cementing shall be done until the cement is brought to the surface.
pkautz	If cement does not circulate to surface, must run temperature survey or other log to determine top of cement
pkautz	Surface casing must be set 25' below top of Rustler Anhydrite in order to seal off protectable water
pkautz	1)- The Operator is to notify NMOC by sundry (Form C-103) within ten (10) days of the well being spud 2)- Drilling Sundries Form C-103 (Casing and Cement test are to be submitted within 10 days 3)- Completion Reports & Logs are to be submitted within 45 days 4)- Deviation / Directional Drill Survey are to be filed with or prior to C-104
pkautz	It is the operator's responsibility to monitor cancellation dates of approved APDs. APD's are good for 2 years and may be extended for one year. Only one 1 year extension will be granted if submitted by C-103 before expiration date. After expiration date or after a 1 year extension must submit new APD. If an APD expires and if site construction has occurred, site remediation is required
pkautz	Stage Tool 1) Must notify OCD Hobbs Office prior to running Stage Tool at 5753703186 2) If using Stage Tool on Surface casing, Stage Tool must be set greater than 350' from surface and a minimum of 200 feet above surface shoe. 3) When using a Stage Tool on Intermediate or Production Casing Stage must be a minimum of 50 feet below previous casing shoe.



11490 Westheimer Road, Suite 950, Houston, Texas 77077 • Phone 832-672-4700 • Fax 832-672-4609

July 9, 2020

Oil Conservation Division
Energy Minerals and Natural Resources Department
1625 N. French Dr.
Hobs, New Mexico 88240

Attn: Mr. Paul Kantz

RE: Application for Merchant State Unit 604Y
Unit C, Section 35-T21S-R33E
Lea County, New Mexico

Dear Mr. Kautz,

I am providing answers to your questions and request for additional information about any potash leases within 1 mile of the referenced Section 35.

This letter is to confirm there are no potash leases within 1 mile of Section 35, Township 21 South, Range 33 East, Lea County, NM.

Sincerely,

A handwritten signature in cursive script that reads "David Harwell".

David Harwell
COO

Advance Energy Partners Hat Mesa, LLC
Email: Dharwell@advanceenergypartners.com
Office Telephone: 832-672-4604
Cell Telephone: 281-235-3431