

Form 3160-3
(June 2015)**OCD – HOBBS**
12/02/2020
RECEIVEDFORM APPROVED
OMB No. 1004-0137
Expires: January 31, 2018UNITED STATES
DEPARTMENT OF THE INTERIOR
BUREAU OF LAND MANAGEMENT**APPLICATION FOR PERMIT TO DRILL OR REENTER**

1a. Type of work: <input type="checkbox"/> DRILL <input type="checkbox"/> REENTER		5. Lease Serial No.
1b. Type of Well: <input type="checkbox"/> Oil Well <input type="checkbox"/> Gas Well <input type="checkbox"/> Other		6. If Indian, Allottee or Tribe Name
1c. Type of Completion: <input type="checkbox"/> Hydraulic Fracturing <input type="checkbox"/> Single Zone <input type="checkbox"/> Multiple Zone		7. If Unit or CA Agreement, Name and No.
		8. Lease Name and Well No. [329881]
2. Name of Operator [373986]		9. API Well No. 30-025-48148
3a. Address	3b. Phone No. (include area code)	10. Field and Pool, or Exploratory [96672]
4. Location of Well (Report location clearly and in accordance with any State requirements. *) At surface At proposed prod. zone		11. Sec., T. R. M. or Blk. and Survey or Area
14. Distance in miles and direction from nearest town or post office*		12. County or Parish
		13. State
15. Distance from proposed* location to nearest property or lease line, ft. (Also to nearest drig. unit line, if any)	16. No of acres in lease	17. Spacing Unit dedicated to this well
18. Distance from proposed location* to nearest well, drilling, completed, applied for, on this lease, ft.	19. Proposed Depth	20. BLM/BIA Bond No. in file
21. Elevations (Show whether DF, KDB, RT, GL, etc.)	22. Approximate date work will start*	23. Estimated duration
24. Attachments		

The following, completed in accordance with the requirements of Onshore Oil and Gas Order No. 1, and the Hydraulic Fracturing rule per 43 CFR 3162.3-3 (as applicable)

- | | |
|--|---|
| 1. Well plat certified by a registered surveyor. | 4. Bond to cover the operations unless covered by an existing bond on file (see Item 20 above). |
| 2. A Drilling Plan. | 5. Operator certification. |
| 3. A Surface Use Plan (if the location is on National Forest System Lands, the SUPO must be filed with the appropriate Forest Service Office). | 6. Such other site specific information and/or plans as may be requested by the BLM. |

25. Signature	Name (Printed/Typed)	Date
Title		
Approved by (Signature)	Name (Printed/Typed)	Date
Title	Office	

Application approval does not warrant or certify that the applicant holds legal or equitable title to those rights in the subject lease which would entitle the applicant to conduct operations thereon.
Conditions of approval, if any, are attached.

Title 18 U.S.C. Section 1001 and Title 43 U.S.C. Section 1212, make it a crime for any person knowingly and willfully to make to any department or agency of the United States any false, fictitious or fraudulent statements or representations as to any matter within its jurisdiction.

GCP Rec 12/02/2020**APPROVED WITH CONDITIONS**
Approval Date: 11/23/2020**Kz**
12/13/2020

SL

(Continued on page 2)

*(Instructions on page 2)

INSTRUCTIONS

GENERAL: This form is designed for submitting proposals to perform certain well operations, as indicated on Federal and Indian lands and leases for action by appropriate Federal agencies, pursuant to applicable Federal laws and regulations. Any necessary special instructions concerning the use of this form and the number of copies to be submitted, particularly with regard to local, area, or regional procedures and practices, either are shown below or will be issued by, or may be obtained from local Federal offices.

ITEM I: If the proposal is to redrill to the same reservoir at a different subsurface location or to a new reservoir, use this form with appropriate notations. Consult applicable Federal regulations concerning subsequent work proposals or reports on the well.

ITEM 4: Locations on Federal or Indian land should be described in accordance with Federal requirements. Consult local Federal offices for specific instructions.

ITEM 14: Needed only when location of well cannot readily be found by road from the land or lease description. A plat, or plats, separate or on the reverse side, showing the roads to, and the surveyed location of, the well, and any other required information, should be furnished when required by Federal agency offices.

ITEMS 15 AND 18: If well is to be, or has been directionally drilled, give distances for subsurface location of hole in any present or objective productive zone.

ITEM 22: Consult applicable Federal regulations, or appropriate officials, concerning approval of the proposal before operations are started.

ITEM 24: If the proposal will involve hydraulic fracturing operations, you must comply with 43 CFR 3162.3-3, including providing information about the protection of usable water. Operators should provide the best available information about all formations containing water and their depths. This information could include data and interpretation of resistivity logs run on nearby wells. Information may also be obtained from state or tribal regulatory agencies and from local BLM offices.

NOTICES

The Privacy Act of 1974 and regulation in 43 CFR 2.48(d) provide that you be furnished the following information in connection with information required by this application.

AUTHORITY: 30 U.S.C. 181 et seq., 25 U.S.C. 396; 43 CFR 3160

PRINCIPAL PURPOSES: The information will be used to: (1) process and evaluate your application for a permit to drill a new oil, gas, or service well or to reenter a plugged and abandoned well; and (2) document, for administrative use, information for the management, disposal and use of National Resource Lands and resources including (a) analyzing your proposal to discover and extract the Federal or Indian resources encountered; (b) reviewing procedures and equipment and the projected impact on the land involved; and (c) evaluating the effects of the proposed operation on the surface and subsurface water and other environmental impacts.

ROUTINE USE: Information from the record and/or the record will be transferred to appropriate Federal, State, and local or foreign agencies, when relevant to civil, criminal or regulatory investigations or prosecution, in connection with congressional inquiries and for regulatory responsibilities.

EFFECT OF NOT PROVIDING INFORMATION: Filing of this application and disclosure of the information is mandatory only if you elect to initiate a drilling or reentry operation on an oil and gas lease.

The Paperwork Reduction Act of 1995 requires us to inform you that:

The BLM connects this information to a new evaluation of the technical, safety, and environmental factors involved with drilling for oil and/or gas on Federal and Indian oil and gas leases. This information will be used to analyze and approve applications. Response to this request is mandatory only if the operator elects to initiate drilling or reentry operations on an oil and gas lease. The BLM would like you to know that you do not have to respond to this or any other Federal agency-sponsored information collection unless it displays a currently valid OMB control number.

BURDEN HOURS STATEMENT: Public reporting burden for this form is estimated to average 8 hours per response, including the time for reviewing instructions, gathering and maintaining data, and completing and reviewing the form. Direct comments regarding the burden estimate or any other aspect of this form to U.S. Department of the Interior, Bureau of Land Management (1004-0137), Bureau Information Connection Clearance Officer (WO-630), 1849 C Street, N.W., Mail Stop 401 LS, Washington, D.C. 20240.

Additional Operator Remarks

Location of Well

0. SHL: NESW / 1818 FSL / 2020 FWL / TWSP: 26S / RANGE: 35E / SECTION: 17 / LAT: 32.0410408 / LONG: -103.3914525 (TVD: 0 feet, MD: 0 feet)

PPP: SESW / 0 FSL / 1651 FWL / TWSP: 26S / RANGE: 35E / SECTION: 8 / LAT: 32.0505637 / LONG: -103.3926615 (TVD: 10509 feet, MD: 13500 feet)

BHL: NENW / 10 FNL / 1653 FWL / TWSP: 26S / RANGE: 35W / SECTION: 8 / LAT: 32.0650613 / LONG: -103.3926841 (TVD: 10445 feet, MD: 18741 feet)

BLM Point of Contact

Name: TYLER HILL

Title: LIE

Phone: (575) 234-5972

Email: tjhill@blm.gov

CONFIDENTIAL

Review and Appeal Rights

A person contesting a decision shall request a State Director review. This request must be filed within 20 working days of receipt of the Notice with the appropriate State Director (see 43 CFR 3165.3). The State Director review decision may be appealed to the Interior Board of Land Appeals, 801 North Quincy Street, Suite 300, Arlington, VA 22203 (see 43 CFR 3165.4). Contact the above listed Bureau of Land Management office for further information.

CONFIDENTIAL

**PECOS DISTRICT
SURFACE USE
CONDITIONS OF APPROVAL**

OPERATOR'S NAME:	Titus Oil and Gas Production LLC
LEASE NO.:	NMNM104706, NMNM110841
COUNTY:	Lea

Wells:**Cattlemen Well Pad 2**

Cattlemen Fed Com 032H

Surface Hole Location: 2310' FNL & 1994' FWL, Section 17, T. 26 S., R. 35 E.

Bottom Hole Location: 10' FSL & 1651' FWL, Section 20, T. 26 S, R 35 E.

Cattlemen Fed Com 112H

Surface Hole Location: 2310' FNL & 2024' FWL, Section 17, T. 26 S., R. 35 E.

Bottom Hole Location: 10' FSL & 1651' FWL, Section 20, T. 26 S, R 35 E.

Cattlemen Fed Com 122H

Surface Hole Location: 2310' FNL & 2054' FWL, Section 17, T. 26 S., R. 35 E.

Bottom Hole Location: 10' FSL & 2310' FWL, Section 20, T. 26 S, R 35 E.

Cattlemen Fed Com 322H

Surface Hole Location: 2084' FNL & 1994' FWL, Section 17, T. 26 S., R. 35 E.

Bottom Hole Location: 10' FSL & 1651' FWL, Section 20, T. 26 S, R 35 E.

Cattlemen Fed Com 432H

Surface Hole Location: 2084' FNL & 2054' FWL, Section 17, T. 26 S., R. 35 E.

Bottom Hole Location: 10' FSL & 2310' FWL, Section 20, T. 26 S, R 35 E.

Cattlemen Fed Com 512H

Surface Hole Location: 2084' FNL & 2024' FWL, Section 17, T. 26 S., R. 35 E.

Bottom Hole Location: 10' FSL & 1850' FWL, Section 20, T. 26 S, R 35 E.

Cattlemen Well Pad 3

Cattlemen Fed Com 123H

Surface Hole Location: 2303' FNL & 1927' FEL, Section 17, T. 26 S., R. 35 E.

Bottom Hole Location: 10' FSL & 1651' FEL, Section 20, T. 26 S, R 35 E.

Cattlemen Fed Com 203H

Surface Hole Location: 2303' FNL & 1957' FEL, Section 17, T. 26 S., R. 35 E.

Bottom Hole Location: 10' FSL & 2308' FEL, Section 20, T. 26 S, R 35 E.

Cattlemen Fed Com 323H

Surface Hole Location: 2077' FNL & 1912' FEL, Section 17, T. 26 S., R. 35 E.

Bottom Hole Location: 10' FSL & 1650' FEL, Section 20, T. 26 S, R 35 E.

Cattlemen Fed Com 403H

Surface Hole Location: 2077' FNL & 1972' FEL, Section 17, T. 26 S., R. 35 E.

Bottom Hole Location: 10' FSL & 2310' FEL, Section 20, T. 26 S, R 35 E.

Cattlemen Fed Com 513H

Surface Hole Location: 2077' FNL & 1942' FEL, Section 17, T. 26 S., R. 35 E.

Bottom Hole Location: 10' FSL & 1870' FEL, Section 20, T. 26 S, R 35 E.

Cattlemen Well Pad 4

Cattlemen Fed Com 034H

Surface Hole Location: 2174' FNL & 892' FEL, Section 17, T. 26 S., R. 35 E.

Bottom Hole Location: 10' FSL & 330' FEL, Section 20, T. 26 S, R 35 E.

Cattlemen Fed Com 114H

Surface Hole Location: 2174' FNL & 952' FEL, Section 17, T. 26 S., R. 35 E.

Bottom Hole Location: 10' FSL & 989' FEL, Section 20, T. 26 S, R 35 E.

Cattlemen Fed Com 204H

Surface Hole Location: 2174' FNL & 922' FEL, Section 17, T. 26 S., R. 35 E.

Bottom Hole Location: 10' FSL & 330' FEL, Section 20, T. 26 S, R 35 E.

Cattlemen Fed Com 404H

Surface Hole Location: 1948' FNL & 892' FEL, Section 17, T. 26 S., R. 35 E.

Bottom Hole Location: 10' FSL & 330' FEL, Section 20, T. 26 S, R 35 E.

Cattlemen Fed Com 434H

Surface Hole Location: 1948' FNL & 952' FEL, Section 17, T. 26 S., R. 35 E.

Bottom Hole Location: 10' FSL & 989' FEL, Section 20, T. 26 S, R 35 E.

Cattlemen Fed Com 514H

Surface Hole Location: 1948' FNL & 922' FEL, Section 17, T. 26 S., R. 35 E.

Bottom Hole Location: 10' FSL & 530' FEL, Section 20, T. 26 S, R 35 E.

Lonesome Dove Pad 2

Lonesome Dove Fed Com 032H

Surface Hole Location: 1818' FSL & 1990' FWL, Section 17, T. 26 S., R. 35 E.

Bottom Hole Location: 10' FNL & 1653' FWL, Section 8, T. 26 S, R 35 E.

Lonesome Dove Fed Com 112H

Surface Hole Location: 1818' FSL & 2020' FWL, Section 17, T. 26 S., R. 35 E.

Bottom Hole Location: 10' FNL & 1653' FWL, Section 8, T. 26 S, R 35 E.

Lonesome Dove Fed Com 122H

Surface Hole Location: 1818' FSL & 2050' FWL, Section 17, T. 26 S., R. 35 E.

Bottom Hole Location: 10' FNL & 2310' FWL, Section 8, T. 26 S, R 35 E.

Lonesome Dove Fed Com 322H

Surface Hole Location: 1592' FSL & 1990' FWL, Section 17, T. 26 S., R. 35 E.

Bottom Hole Location: 10' FNL & 1653' FWL, Section 8, T. 26 S, R 35 E.

Lonesome Dove Fed Com 432H

Surface Hole Location: 1592' FSL & 2050' FWL, Section 17, T. 26 S., R. 35 E.

Bottom Hole Location: 10' FNL & 2310' FWL, Section 8, T. 26 S, R 35 E.

Lonesome Dove Fed Com 512H

Surface Hole Location: 1592' FSL & 2020' FWL, Section 17, T. 26 S., R. 35 E.

Bottom Hole Location: 10' FNL & 1850' FWL, Section 8, T. 26 S, R 35 E.

Lonesome Dove Pad 3

Lonesome Dove Fed Com 123H

Surface Hole Location: 2530' FSL & 1927' FEL, Section 17, T. 26 S., R. 35 E.

Bottom Hole Location: 10' FNL & 1650' FEL, Section 8, T. 26 S, R 35 E.

Lonesome Dove Fed Com 203H

Surface Hole Location: 2530' FSL & 1957' FEL, Section 17, T. 26 S., R. 35 E.

Bottom Hole Location: 10' FNL & 2307' FEL, Section 8, T. 26 S, R 35 E.

Lonesome Dove Fed Com 323H

Surface Hole Location: 2304' FSL & 1912' FEL, Section 17, T. 26 S., R. 35 E.

Bottom Hole Location: 10' FNL & 1650' FEL, Section 8, T. 26 S, R 35 E.

Lonesome Dove Fed Com 403H

Surface Hole Location: 2304' FSL & 1972' FEL, Section 17, T. 26 S., R. 35 E.

Bottom Hole Location: 10' FNL & 2307' FEL, Section 8, T. 26 S, R 35 E.

Lonesome Dove Fed Com 513H

Surface Hole Location: 2304' FSL & 1942' FEL, Section 17, T. 26 S., R. 35 E.

Bottom Hole Location: 10' FNL & 1870' FEL, Section 8, T. 26 S, R 35 E.

Lonesome Dove Pad 4

Lonesome Dove Fed Com 034H

Surface Hole Location: 2515' FSL & 1079' FEL, Section 17, T. 26 S., R. 35 E.

Bottom Hole Location: 10' FNL & 330' FEL, Section 8, T. 26 S, R 35 E.

Lonesome Dove Fed Com 114H

Surface Hole Location: 2515' FSL & 1139' FEL, Section 17, T. 26 S., R. 35 E.

Bottom Hole Location: 10' FNL & 988' FEL, Section 8, T. 26 S, R 35 E.

Lonesome Dove Fed Com 204H

Surface Hole Location: 2515' FSL & 1109' FEL, Section 17, T. 26 S., R. 35 E.

Bottom Hole Location: 10' FNL & 330' FEL, Section 8, T. 26 S, R 35 E.

Lonesome Dove Fed Com 404H

Surface Hole Location: 2289' FSL & 1079' FEL, Section 17, T. 26 S., R. 35 E.

Bottom Hole Location: 10' FNL & 330' FEL, Section 8, T. 26 S, R 35 E.

Lonesome Dove Fed Com 434H

Surface Hole Location: 2289' FSL & 1139' FEL, Section 17, T. 26 S., R. 35 E.

Bottom Hole Location: 10' FNL & 988' FEL, Section 8, T. 26 S, R 35 E.

Lonesome Dove Fed Com 514H

Surface Hole Location: 2289' FSL & 1109' FEL, Section 17, T. 26 S., R. 35 E.

Bottom Hole Location: 10' FNL & 530' FEL, Section 8, T. 26 S, R 35 E.

TABLE OF CONTENTS

Standard Conditions of Approval (COA) apply to this APD. If any deviations to these standards exist or special COAs are required, the section with the deviation or requirement will be checked below.

- ☐ **General Provisions**
- ☐ **Permit Expiration**
- ☐ **Archaeology, Paleontology, and Historical Sites**
- ☐ **Noxious Weeds**
- ☒ **Special Requirements**
 - Watershed
 - Range
 - Lesser Prairie Chicken
 - VRM IV
- ☐ **Construction**
 - Notification
 - Topsoil
 - Closed Loop System
 - Federal Mineral Material Pits
 - Well Pads
 - Roads
- ☐ **Road Section Diagram**
- ☒ **Production (Post Drilling)**
 - Well Structures & Facilities
 - Pipelines
 - Electric Lines
- ☐ **Interim Reclamation**
- ☐ **Final Abandonment & Reclamation**

I. GENERAL PROVISIONS

The approval of the Application For Permit To Drill (APD) is in compliance with all applicable laws and regulations: 43 Code of Federal Regulations 3160, the lease terms, Onshore Oil and Gas Orders, Notices To Lessees, New Mexico Oil Conservation Division (NMOCD) Rules, National Historical Preservation Act As Amended, and instructions and orders of the Authorized Officer. Any request for a variance shall be submitted to the Authorized Officer on Form 3160-5, Sundry Notices and Report on Wells.

II. PERMIT EXPIRATION

If the permit terminates prior to drilling and drilling cannot be commenced within 60 days after expiration, an operator is required to submit Form 3160-5, Sundry Notices and Reports on Wells, requesting surface reclamation requirements for any surface disturbance. However, if the operator will be able to initiate drilling within 60 days after the expiration of the permit, the operator must have set the conductor pipe in order to allow for an extension of 60 days beyond the expiration date of the APD. (Filing of a Sundry Notice is required for this 60 day extension.)

III. ARCHAEOLOGICAL, PALEONTOLOGY & HISTORICAL SITES

Any cultural resource (historic or prehistoric site or object) discovered by the holder, or any person working on the holder's behalf, on public or Federal land shall be immediately reported to the Authorized Officer. The holder shall suspend all operations in the immediate area of such discovery until written authorization to proceed is issued by the Authorized Officer. An evaluation of the discovery will be made by the Authorized Officer to determine appropriate actions to prevent the loss of significant cultural or scientific values. The holder will be responsible for the cost of evaluation and any decision as to the proper mitigation measures will be made by the Authorized Officer after consulting with the holder.

OR

If the entire project is covered under the Permian Basin Programmatic Agreement (cultural resources only):

The proponent has contributed funds commensurate to the undertaking into an account for offsite mitigation. Participation in the PA serves as mitigation for the effects of this project on cultural resources. If any human skeletal remains, funerary objects, sacred objects, or objects of cultural patrimony are discovered at any time during construction, all construction activities shall halt and the BLM will be notified as soon as possible within 24 hours. Work shall not resume until a Notice to Proceed is issued by the BLM. See information below discussing NAGPRA.

If the proposed project is split between a Class III inventory and a Permian Basin Programmatic Agreement contribution, the portion of the project covered under Class III inventory should default to the first paragraph stipulations.

The holder is hereby obligated to comply with procedures established in the Native American Graves Protection and Repatriation Act (NAGPRA) to protect such cultural items as human remains, associated funerary objects, sacred objects, and objects of cultural patrimony discovered inadvertently during the course of project implementation. In the event that any of the cultural items listed above are discovered during the course of project work, the proponent shall immediately halt the disturbance and contact the BLM within 24 hours for instructions. The proponent or initiator of any project shall be held responsible for protecting, evaluating, reporting, excavating, treating, and disposing of these cultural items according to the procedures established by the BLM in consultation with Indian Tribes."

Any paleontological resource (historic or prehistoric site or object) discovered by the holder, or any person working on the holder's behalf, on public or Federal land shall be immediately reported to the Authorized Officer. The holder shall suspend all operations in the immediate area of such discovery until written authorization to proceed is issued by the Authorized Officer. An evaluation of the discovery will be made by the Authorized Officer to determine appropriate actions to prevent the loss of significant cultural or scientific values. The holder will be responsible for the cost of evaluation and any decision as to the proper mitigation measures will be made by the Authorized Officer after consulting with the holder.

IV. NOXIOUS WEEDS

The operator shall be held responsible if noxious weeds become established within the areas of operations. Weed control shall be required on the disturbed land where noxious weeds exist, which includes the roads, pads, associated pipeline corridor, and adjacent land affected by the establishment of weeds due to this action. The operator shall consult with the Authorized Officer for acceptable weed control methods, which include following EPA and BLM requirements and policies.

SPECIAL REQUIREMENT(S)

Watershed:

The entire well pad(s) will be bermed to prevent oil, salt, and other chemical contaminants from leaving the well pad. The compacted berm shall be constructed at a minimum of 12 inches with impermeable mineral material (e.g. caliche). Topsoil shall not be used to construct the berm. No water flow from the uphill side(s) of the pad shall be allowed to enter the well pad. The integrity of the berm shall be maintained around the surfaced pad throughout the life of the well and around the downsized pad after interim reclamation has been completed. Any water erosion that may occur due to the construction of the well pad during the life of the well will be quickly corrected and proper measures will be taken to prevent future erosion. Stockpiling of topsoil is required. The topsoil shall be stockpiled in an appropriate location to prevent loss of soil due to water or wind erosion and not used for berming or erosion control. If fluid collects within the bermed area, the fluid must be vacuumed into a safe container and disposed of properly at a state approved facility.

TANK BATTERY:

Tank battery locations will be lined and bermed. A 20 mil permanent liner will be installed with a 4 oz. felt backing to prevent tears or punctures. Tank battery berms must be large enough to contain 1 ½ times the content of the largest tank or 24 hour production, whichever is greater. Automatic shut off, check valves, or similar systems will be installed for tanks to minimize the effects of catastrophic line failures used in production or drilling.

BURIED/SURFACE LINE(S):

When crossing ephemeral drainages the pipeline(s) will be buried to a minimum depth of 48 inches from the top of pipe to ground level. Erosion control methods such as gabions and/or rock aprons should be placed on both up and downstream sides of the pipeline crossing. In addition, curled (weed free) wood/straw fiber wattles/logs and/or silt fences should be placed on the downstream side for sediment control during construction and maintained until soils and vegetation have stabilized. Water bars should be placed within the ROW to divert and dissipate surface runoff. A pipeline access road is not permitted to cross these ephemeral drainages. Traffic should be diverted to a preexisting route. Additional seeding may be required in floodplains and drainages to restore energy dissipating vegetation.

Prior to pipeline installation/construction a leak detection plan will be developed. The method(s) could incorporate gauges to detect pressure drops, situating valves and lines so they can be visually inspected periodically or installing electronic sensors to alarm when a leak is present.

The leak detection plan will incorporate an automatic shut off system that will be installed for proposed pipelines to minimize the effects of an undesirable event.

ELECTRIC LINE(S):

Any water erosion that may occur due to the construction of overhead electric line and during the life of the power line will be quickly corrected and proper measures will be taken to prevent future erosion. A power pole should not be placed in drainages, playas, wetlands, riparian areas, or floodplains and must span across the features at a distance away that would not promote further erosion.

TEMPORARY USE FRESH WATER FRAC LINE(S):

Once the temporary use exceeds the timeline of 180 days and/or with a 90 day extension status; further analysis will be required if the applicant pursues to turn the temporary ROW into a permanent ROW.

LOW WATER CROSSING:

A low water crossing shall be constructed on the access road where drainages/arroyos cross the road. The low water crossing shall be accomplished by constructing the road down to the bed of the drainage. Material moved from the banks of the crossing shall be stockpiled near the road edge. Gravel, cobble, or concrete bottoms shall be used as the primary material for the roadbed in the low water crossing. Constructed rock gabions will be installed up-stream of the low water crossing to slow the flow of water prior to it reaching the crossing. It is the responsibility of the permit holder (operator) to maintain the low water crossings surface and to keep it free of debris.

Range:**Cattleguards**

Where a permanent cattlegaurd is approved, an appropriately sized cattleguard(s) sufficient to carry out the project shall be installed and maintained at fence crossing(s). Any existing cattleguard(s) on the access road shall be repaired or replaced if they are damaged or have deteriorated beyond practical use. The operator shall be responsible for the condition of the existing cattleguard(s) that are in place and are utilized during lease operations. A gate shall be constructed on one side of the cattleguard and fastened securely to H-braces.

Fence Requirement

Where entry granted across a fence line, the fence must be braced and tied off on both sides of the passageway prior to cutting. Once the work is completed, the fence will be restored to its prior condition, or better. The operator shall notify the private surface landowner or the grazing allotment holder prior to crossing any fence(s).

If a readjustment to the existing fence line is deemed necessary by the proponent and project lead, the reroute shall proceed following consultation with the grazing allotment holder and BLM range staff. Project lead shall be responsible for making sure such reroute will not result in any impact greater than the proposed action. Operator shall be responsible for submitting new shapefiles of re-route to the BLM, as well as constructing fence to BLM Specification. No allotment boundary fences shall be moved unless explicitly discussed with the CFO Range staff.

Livestock Watering Requirement

Any damage to structures that provide water to livestock throughout the life of the well, caused by operations from the well site, must be immediately corrected by the operator. The operator must notify the BLM office (575-234-5972) and the private surface landowner or the grazing allotment holder if any damage occurs to structures that provide water to livestock.

Lesser Prairie Chicken:**Timing Limitation Stipulation/Condition of Approval for Lesser Prairie-Chicken:**

Oil and gas activities including 3-D geophysical exploration, and drilling will not be allowed in lesser prairie-chicken habitat during the period from March 1st through June 15th annually. During that period, other activities that produce noise or involve human activity, such as the maintenance of oil and gas facilities, geophysical exploration other than 3-D operations, and pipeline, road, and well pad construction, will be allowed except between 3:00 am and 9:00 am. The 3:00 am to 9:00 am restriction will not apply to normal, around-the-clock operations, such as venting, flaring, or pumping, which do not require a human presence during this period. Additionally, no new drilling will be allowed within up to 200 meters of leks known at the time of permitting. Normal vehicle use on existing roads will not be restricted. Exhaust noise from pump jack engines must be muffled or otherwise controlled so as not to exceed 75 db measured at 30 ft. from the source of the noise.

Timing Limitation Exceptions:

The Carlsbad Field Office will publish an annual map of where the LPC timing and noise stipulations and conditions of approval (Limitations) will apply for the identified year (between March 1 and June 15) based on the latest survey information. The LPC Timing Area map will identify areas which are Habitat Areas (HA), Isolated Population Area (IPA), and Primary Population Area (PPA). The LPC Timing Area map will also have an area in red crosshatch. The red crosshatch area is the only area where an operator is required to submit a request for exception to the LPC Limitations. If an operator is operating outside the red crosshatch area, the LPC Limitations do not apply for that year and an exception to LPC Limitations is not required.

Ground-level Abandoned Well Marker to avoid raptor perching:

Upon the plugging and subsequent abandonment of the well, the well marker will be installed at ground level on a plate containing the pertinent information for the plugged well. For more installation details, contact the Carlsbad Field Office at 575-234-5972.

VRM IV:

Above-ground structures including meter housing that are not subject to safety requirements are painted a flat non-reflective paint color, Shale Green from the BLM Standard Environmental Color Chart (CC-001: June 2008).

V. CONSTRUCTION**A. NOTIFICATION**

The BLM shall administer compliance and monitor construction of the access road and well pad. Notify the Carlsbad Field Office at (575) 234-5909 at least 3 working days prior to commencing construction of the access road and/or well pad.

When construction operations are being conducted on this well, the operator shall have the approved APD and Conditions of Approval (COA) on the well site and they shall be made available upon request by the Authorized Officer.

B. TOPSOIL

The operator shall strip the top portion of the soil (root zone) from the entire well pad area and stockpile the topsoil along the edge of the well pad as depicted in the APD. The root zone is typically six (6) inches in depth. All the stockpiled topsoil will be redistributed over the interim reclamation areas. Topsoil shall not be used for berming the pad or facilities. For final reclamation, the topsoil shall be spread over the entire pad area for seeding preparation.

Other subsoil (below six inches) stockpiles must be completely segregated from the topsoil stockpile. Large rocks or subsoil clods (not evident in the surrounding terrain) must be buried within the approved area for interim and final reclamation.

C. CLOSED LOOP SYSTEM

Tanks are required for drilling operations: No Pits.

The operator shall properly dispose of drilling contents at an authorized disposal site.

D. FEDERAL MINERAL MATERIALS PIT

Payment shall be made to the BLM prior to removal of any federal mineral materials. Call the Carlsbad Field Office at (575) 234-5972.

E. WELL PAD SURFACING

Surfacing of the well pad is not required.

If the operator elects to surface the well pad, the surfacing material may be required to be removed at the time of reclamation. The well pad shall be constructed in a manner which creates the smallest possible surface disturbance, consistent with safety and operational needs.

F. EXCLOSURE FENCING (CELLARS & PITS)

Exclosure Fencing

The operator will install and maintain exclosure fencing for all open well cellars to prevent access to public, livestock, and large forms of wildlife before and after drilling operations until the pit is free of fluids and the operator initiates backfilling. (For examples of exclosure fencing design, refer to BLM's Oil and Gas Gold Book, Exclosure Fence Illustrations, Figure 1, Page 18.)

G. ON LEASE ACCESS ROADS

Road Width

The access road shall have a driving surface that creates the smallest possible surface disturbance and does not exceed fourteen (14) feet in width. The maximum width of surface disturbance, when constructing the access road, shall not exceed twenty-five (25) feet.

Surfacing

Surfacing material is not required on the new access road driving surface. If the operator elects to surface the new access road or pad, the surfacing material may be required to be removed at the time of reclamation.

Where possible, no improvements should be made on the unsurfaced access road other than to remove vegetation as necessary, road irregularities, safety issues, or to fill low areas that may sustain standing water.

The Authorized Officer reserves the right to require surfacing of any portion of the access road at any time deemed necessary. Surfacing may be required in the event the road deteriorates, erodes, road traffic increases, or it is determined to be beneficial for future field development. The surfacing depth and type of material will be determined at the time of notification.

Crowning

Crowning shall be done on the access road driving surface. The road crown shall have a grade of approximately 2% (i.e., a 1" crown on a 14' wide road). The road shall conform to Figure 1; cross section and plans for typical road construction.

Ditching

Ditching shall be required on both sides of the road.

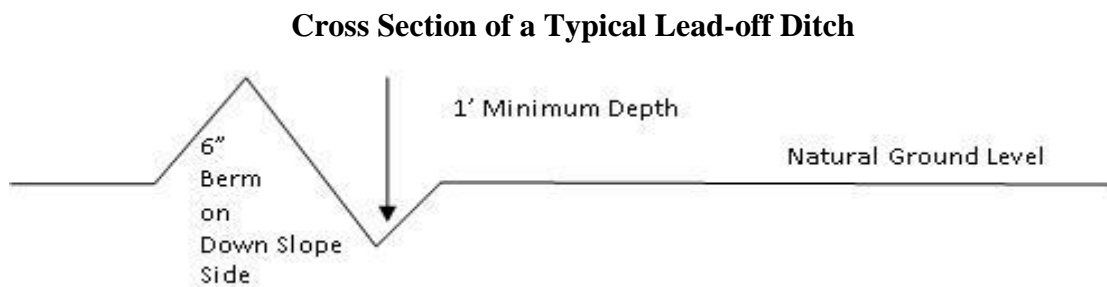
Turnouts

Vehicle turnouts shall be constructed on the road. Turnouts shall be intervisible with interval spacing distance less than 1000 feet. Turnouts shall conform to Figure 1; cross section and plans for typical road construction.

Drainage

Drainage control systems shall be constructed on the entire length of road (e.g. ditches, sidehill outslowing and insloping, lead-off ditches, culvert installation, and low water crossings).

A typical lead-off ditch has a minimum depth of 1 foot below and a berm of 6 inches above natural ground level. The berm shall be on the down-slope side of the lead-off ditch.



All lead-off ditches shall be graded to drain water with a 1 percent minimum to 3 percent maximum ditch slope. The spacing interval are variable for lead-off ditches and shall be determined according to the formula for spacing intervals of lead-off ditches, but may be amended depending upon existing soil types and centerline road slope (in %);

Formula for Spacing Interval of Lead-off Ditches

Example - On a 4% road slope that is 400 feet long, the water flow shall drain water into a lead-off ditch. Spacing interval shall be determined by the following formula:

$$400 \text{ foot road with } 4\% \text{ road slope: } \frac{400'}{4\%} + 100' = 200' \text{ lead-off ditch interval}$$

Cattle guards

An appropriately sized cattle guard sufficient to carry out the project shall be installed and maintained at fence/road crossings. Any existing cattle guards on the access road route shall be repaired or replaced if they are damaged or have deteriorated beyond practical use. The operator shall be responsible for the condition of the existing cattle guards that are in place and are utilized during lease operations.

Fence Requirement

Where entry is granted across a fence line, the fence shall be braced and tied off on both sides of the passageway prior to cutting. The operator shall notify the private surface landowner or the grazing allotment holder prior to crossing any fences.

Public Access

Public access on this road shall not be restricted by the operator without specific written approval granted by the Authorized Officer.

Construction Steps

1. Salvage topsoil
2. Construct road

3. Redistribute topsoil
4. Revegetate slopes

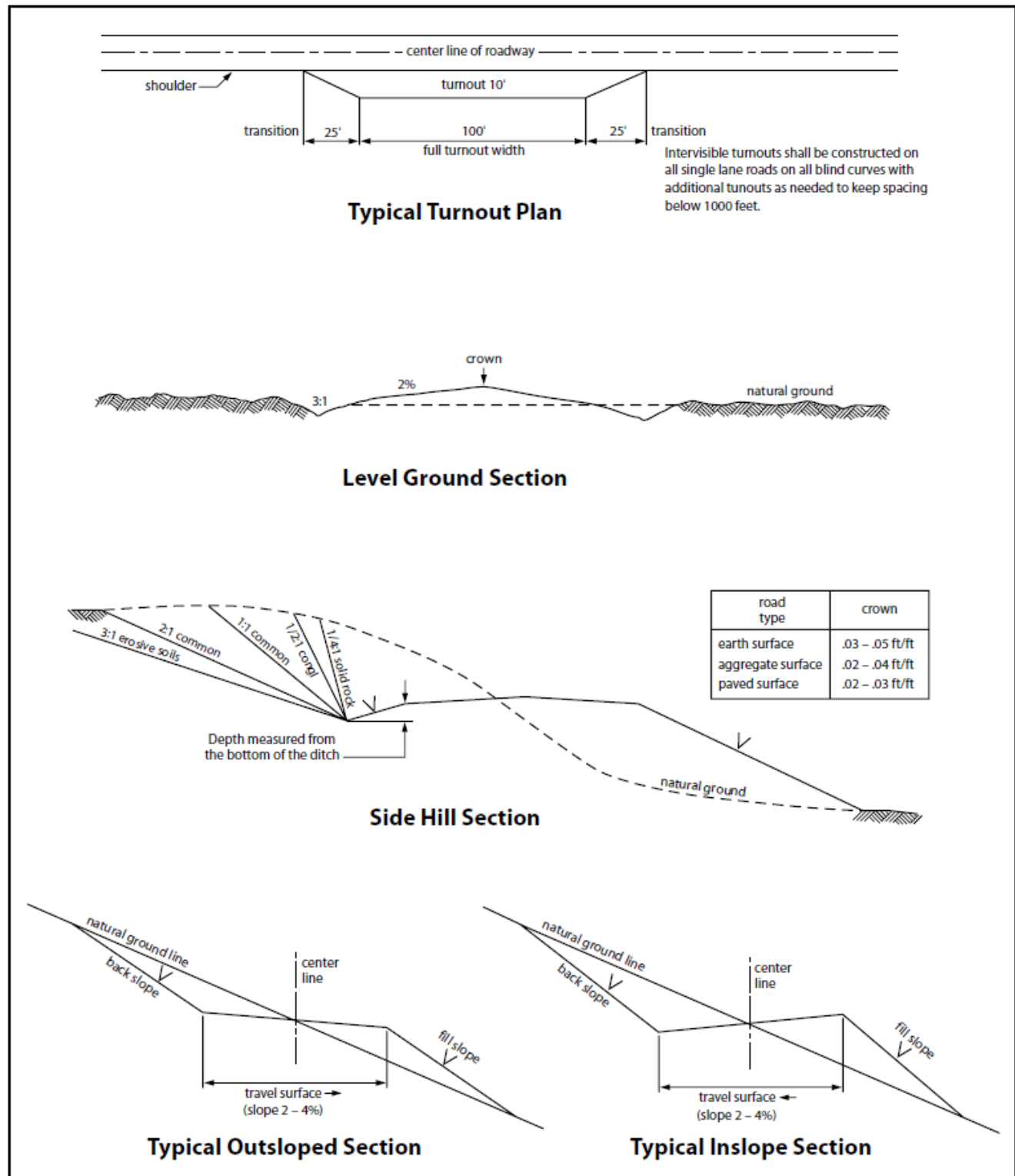


Figure 1. Cross-sections and plans for typical road sections representative of BLM resource or FS local and higher-class roads.

VI. PRODUCTION (POST DRILLING)

A. WELL STRUCTURES & FACILITIES

Placement of Production Facilities

Production facilities should be placed on the well pad to allow for maximum interim recontouring and revegetation of the well location.

Exclosure Netting (Open-top Tanks)

Immediately following active drilling or completion operations, the operator will take actions necessary to prevent wildlife and livestock access, including avian wildlife, to all open-topped tanks that contain or have the potential to contain salinity sufficient to cause harm to wildlife or livestock, hydrocarbons, or Resource Conservation and Recovery Act of 1976-exempt hazardous substances. At a minimum, the operator will net, screen, or cover open-topped tanks to exclude wildlife and livestock and prevent mortality. If the operator uses netting, the operator will cover and secure the open portion of the tank to prevent wildlife entry. The operator will net, screen, or cover the tanks until the operator removes the tanks from the location or the tanks no longer contain substances that could be harmful to wildlife or livestock. Use a maximum netting mesh size of 1 ½ inches. The netting must not be in contact with fluids and must not have holes or gaps.

Chemical and Fuel Secondary Containment and Exclosure Screening

The operator will prevent all hazardous, poisonous, flammable, and toxic substances from coming into contact with soil and water. At a minimum, the operator will install and maintain an impervious secondary containment system for any tank or barrel containing hazardous, poisonous, flammable, or toxic substances sufficient to contain the contents of the tank or barrel and any drips, leaks, and anticipated precipitation. The operator will dispose of fluids within the containment system that do not meet applicable state or U. S. Environmental Protection Agency livestock water standards in accordance with state law; the operator must not drain the fluids to the soil or ground. The operator will design, construct, and maintain all secondary containment systems to prevent wildlife and livestock exposure to harmful substances. At a minimum, the operator will install effective wildlife and livestock exclosure systems such as fencing, netting, expanded metal mesh, lids, and grate covers. Use a maximum netting mesh size of 1 ½ inches.

Open-Vent Exhaust Stack Exclosures

The operator will construct, modify, equip, and maintain all open-vent exhaust stacks on production equipment to prevent birds and bats from entering, and to discourage perching, roosting, and nesting. (*Recommended exclosure structures on open-vent exhaust stacks are in the shape of a cone.*) Production equipment includes, but may not be limited to, tanks, heater-treaters, separators, dehydrators, flare stacks, in-line units, and compressor mufflers.

Containment Structures

Proposed production facilities such as storage tanks and other vessels will have a secondary containment structure that is constructed to hold the capacity of 1.5 times the largest tank, plus freeboard to account for precipitation, unless more stringent protective requirements are deemed necessary.

Painting Requirement

All above-ground structures including meter housing that are not subject to safety requirements shall be painted a flat non-reflective paint color, **Shale Green** from the BLM Standard Environmental Color Chart (CC-001: June 2008).

B. PIPELINES

- The BLM, Carlsbad Field Office, will be informed immediately if any subsurface drainage channels, passages, or voids are intersected by trenching, and no pipe will be laid in the trench at that point until clearance has been issued by the Authorized Officer.
- If a void is encountered alignments may be rerouted to avoid the karst feature and lessen; the potential of subsidence or collapse of karst features, buildup of toxic or combustible gas, or other possible impacts to cave and karst resources from the buried pipeline.
- Special restoration stipulations or realignment may be required at such intersections, if any.
- A leak detection plan **will be submitted to the BLM Carlsbad Field Office for approval** prior to pipeline installation. The method could incorporate gauges to detect pressure drops, siting valves and lines so they can be visually inspected periodically or installing electronic sensors to alarm when a leak is present. The leak detection plan will incorporate an automatic shut off system that will be installed for proposed pipelines to minimize the effects of an undesirable event.
- Regular monitoring is required to quickly identify leaks for their immediate and proper treatment.
- All spills or leaks will be reported to the BLM immediately for their immediate and proper treatment.

BURIED PIPELINE STIPULATIONS

A copy of the application (Grant, APD, or Sundry Notice) and attachments, including conditions of approval, survey plat and/or map, will be on location during construction. BLM personnel may request to you a copy of your permit during construction to ensure compliance with all stipulations.

Holder agrees to comply with the following stipulations to the satisfaction of the Authorized Officer:

1. The Holder shall indemnify the United States against any liability for damage to life or property arising from the occupancy or use of public lands under this grant.
2. The Holder shall comply with all applicable Federal laws and regulations existing or hereafter enacted or promulgated. In any event, the holder shall comply with the Toxic Substances Control Act of 1976 as amended, 15 USC 2601 et seq. (1982) with regards to any toxic substances that are used, generated by or stored on the right-of-way or on facilities authorized under this right-of-way grant. (See 40 CFR Part 702-799 and especially, provisions on polychlorinated biphenyls, 40 CFR 761.1-761.193.) Additionally, any release of toxic substances (leaks, spills, etc.) in excess of the reportable quantity established by 40 CFR Part 117 shall be reported as required by the Comprehensive Environmental Response, Compensation, and Liability Act, section 102b. A copy of any report required or requested by any Federal agency or State government as a result of a reportable release or spill of any toxic substances shall be furnished to the authorized officer concurrent with the filing of the reports to the involved Federal agency or State government.
3. The holder agrees to indemnify the United States against any liability arising from the release of any hazardous substance or hazardous waste (as these terms are defined in the Comprehensive Environmental Response, Compensation and Liability Act of 1980, 42 U.S.C. 9601, et seq. or the Resource Conservation and Recovery Act, 42 U.S.C. 6901, et seq.) on the

Right-of-Way (unless the release or threatened release is wholly unrelated to the Right-of-Way holder's activity on the Right-of-Way), or resulting from the activity of the Right-of-Way holder on the Right-of-Way. This agreement applies without regard to whether a release is caused by the holder, its agent, or unrelated third parties.

4. If, during any phase of the construction, operation, maintenance, or termination of the pipeline, any oil or other pollutant should be discharged from the pipeline system, impacting Federal lands, the control and total removal, disposal, and cleaning up of such oil or other pollutant, wherever found, shall be the responsibility of holder, regardless of fault. Upon failure of holder to control, dispose of, or clean up such discharge on or affecting Federal lands, or to repair all damages resulting therefrom, on the Federal lands, the Authorized Officer may take such measures as he deems necessary to control and clean up the discharge and restore the area, including where appropriate, the aquatic environment and fish and wildlife habitats, at the full expense of the holder. Such action by the Authorized Officer shall not relieve holder of any responsibility as provided herein.

5. All construction and maintenance activity will be confined to the authorized right-of-way.

6. The pipeline will be buried with a minimum cover of 36 inches between the top of the pipe and ground level.

7. The maximum allowable disturbance for construction in this right-of-way will be 30 feet:

- Blading of vegetation within the right-of-way will be allowed: maximum width of blading operations will not exceed 20 feet. The trench is included in this area. (*Blading is defined as the complete removal of brush and ground vegetation.*)
- Clearing of brush species within the right-of-way will be allowed: maximum width of clearing operations will not exceed 30 feet. The trench and bladed area are included in this area. (*Clearing is defined as the removal of brush while leaving ground vegetation (grasses, weeds, etc.) intact. Clearing is best accomplished by holding the blade 4 to 6 inches above the ground surface.*)
- The remaining area of the right-of-way (if any) shall only be disturbed by compressing the vegetation. (*Compressing can be caused by vehicle tires, placement of equipment, etc.*)

8. The holder shall stockpile an adequate amount of topsoil where blading is allowed. The topsoil to be stripped is approximately 6 inches in depth. The topsoil will be segregated from other spoil piles from trench construction. The topsoil will be evenly distributed over the bladed area for the preparation of seeding.

9. The holder shall minimize disturbance to existing fences and other improvements on public lands. The holder is required to promptly repair improvements to at least their former state. Functional use of these improvements will be maintained at all times. The holder will contact the owner of any improvements prior to disturbing them. When necessary to pass through a fence line, the fence shall be braced on both sides of the passageway prior to cutting of the fence. No permanent gates will be allowed unless approved by the Authorized Officer.

10. Vegetation, soil, and rocks left as a result of construction or maintenance activity will be randomly scattered on this right-of-way and will not be left in rows, piles, or berms, unless otherwise approved by the Authorized Officer. The entire right-of-way shall be recontoured to match the surrounding landscape. The backfilled soil shall be compacted and a 6 inch berm will be left over the ditch line to allow for settling back to grade.

11. In those areas where erosion control structures are required to stabilize soil conditions, the holder will install such structures as are suitable for the specific soil conditions being encountered and which are in accordance with sound resource management practices.

12. The holder will reseed all disturbed areas. Seeding will be done according to the attached seeding requirements, using the following seed mix.

- | | |
|--|--|
| <input type="checkbox"/> seed mixture 1 | <input type="checkbox"/> seed mixture 3 |
| <input checked="" type="checkbox"/> seed mixture 2 | <input type="checkbox"/> seed mixture 4 |
| <input type="checkbox"/> seed mixture 2/LPC | <input type="checkbox"/> Aplomado Falcon Mixture |

13. All above-ground structures not subject to safety requirements shall be painted by the holder to blend with the natural color of the landscape. The paint used shall be color which simulates "Standard Environmental Colors" – **Shale Green**, Munsell Soil Color No. 5Y 4/2.

14. The pipeline will be identified by signs at the point of origin and completion of the right-of-way and at all road crossings. At a minimum, signs will state the holder's name, BLM serial number, and the product being transported. All signs and information thereon will be posted in a permanent, conspicuous manner, and will be maintained in a legible condition for the life of the pipeline.

15. The holder shall not use the pipeline route as a road for purposes other than routine maintenance as determined necessary by the Authorized Officer in consultation with the holder before maintenance begins. The holder will take whatever steps are necessary to ensure that the pipeline route is not used as a roadway. As determined necessary during the life of the pipeline, the Authorized Officer may ask the holder to construct temporary deterrence structures.

16. Any cultural resource (historic or prehistoric site or object) discovered by the holder, or any person working on the holder's behalf, on public or Federal land shall be immediately reported to the Authorized Officer. The holder shall suspend all operations in the immediate area of such discovery until written authorization to proceed is issued by the Authorized Officer. An evaluation of the discovery will be made by the Authorized Officer to determine appropriate actions to prevent the loss of significant cultural or scientific values. The holder will be responsible for the cost of evaluation and any decision as to the proper mitigation measures will be made by the Authorized Officer after consulting with the holder.

OR

If the entire project is covered under the Permian Basin Programmatic Agreement (cultural resources only):

The proponent has contributed funds commensurate to the undertaking into an account for offsite mitigation. Participation in the PA serves as mitigation for the effects of this project on cultural resources. If any human skeletal remains, funerary objects, sacred objects, or objects of cultural patrimony are discovered at any time during construction, all construction activities shall halt and the BLM will be notified as soon as possible within 24 hours. Work shall not resume until a Notice to Proceed is issued by the BLM. See Stipulation 17 for more information.

If the proposed project is split between a Class III inventory and a Permian Basin Programmatic Agreement contribution, the portion of the project covered under Class III inventory should default to the first paragraph stipulations.

17. The holder is hereby obligated to comply with procedures established in the Native American Graves Protection and Repatriation Act (NAGPRA) to protect such cultural items as human remains, associated funerary objects, sacred objects, and objects of cultural patrimony discovered inadvertently during the course of project implementation. In the event that any of the cultural items listed above are discovered during the course of project work, the proponent shall immediately halt the disturbance and contact the BLM within 24 hours for instructions. The proponent or initiator of any project shall be held responsible for protecting, evaluating, reporting, excavating, treating, and disposing of these cultural items according to the procedures established by the BLM in consultation with Indian Tribes."

18. Any paleontological resource (historic or prehistoric site or object) discovered by the holder, or any person working on the holder's behalf, on public or Federal land shall be immediately reported to the Authorized Officer. The holder shall suspend all operations in the immediate area of such discovery until written authorization to proceed is issued by the Authorized Officer. An evaluation of the discovery will be made by the Authorized Officer to determine appropriate actions to prevent the loss of significant cultural or scientific values. The holder will be responsible for the cost of evaluation and any decision as to the proper mitigation measures will be made by the Authorized Officer after consulting with the holder.

19. The operator shall be held responsible if noxious weeds become established within the areas of operations. Weed control shall be required on the disturbed land where noxious weeds exist, which includes associated roads, pipeline corridor and adjacent land affected by the establishment of weeds due to this action. The operator shall consult with the Authorized Officer for acceptable weed control methods, which include following EPA and BLM requirements and policies.

20. Escape Ramps - The operator will construct and maintain pipeline/utility trenches [that are not otherwise fenced, screened, or netted] to prevent livestock, wildlife, and humans from becoming entrapped. At a minimum, the operator will construct and maintain escape ramps, ladders, or other methods of avian and terrestrial wildlife escape in the trenches according to the following criteria:

- a. Any trench left open for eight (8) hours or less is not required to have escape ramps; however, before the trench is backfilled, the contractor/operator shall inspect the trench for wildlife, remove all trapped wildlife, and release them at least 100 yards from the trench.

- b. For trenches left open for eight (8) hours or more, earthen escape ramps (built at no more than a 30 degree slope and spaced no more than 500 feet apart) shall be placed in the trench.

21. Special Stipulations:

Karst:

- The BLM, Carlsbad Field Office, will be informed immediately if any subsurface drainage channels, passages, or voids are intersected by trenching, and no pipe will be laid in the trench at that point until clearance has been issued by the Authorized Officer.
- If a void is encountered alignments may be rerouted to avoid the karst feature and lessen; the potential of subsidence or collapse of karst features, buildup of toxic or combustible gas, or other possible impacts to cave and karst resources from the buried pipeline.
- Special restoration stipulations or realignment may be required at such intersections, if any.
- A leak detection plan **will be submitted to the BLM Carlsbad Field Office for approval** prior to pipeline installation. The method could incorporate gauges to detect pressure drops, siting values and lines so they can be visually inspected periodically or installing electronic sensors to alarm when a leak is present. The leak detection plan will incorporate an automatic shut off system that will be installed for proposed pipelines to minimize the effects of an undesirable event.
- Regular monitoring is required to quickly identify leaks for their immediate and proper treatment.
- All spills or leaks will be reported to the BLM immediately for their immediate and proper treatment.

STANDARD STIPULATIONS FOR SURFACE INSTALLED PIPELINES

A copy of the Grant and attachments, including stipulations, survey plat(s) and/or map(s), shall be on location during construction. BLM personnel may request to review a copy of your permit during construction to ensure compliance with all stipulations.

Holder agrees to comply with the following stipulations to the satisfaction of the Authorized Officer:

1. Holder shall indemnify the United States against any liability for damage to life or property arising from the occupancy or use of public lands under this grant.
2. Holder shall comply with all applicable Federal laws and regulations existing or hereafter enacted or promulgated. In any event, Holder shall comply with the Toxic Substances Control Act of 1976 as amended, 15 USC § 2601 *et seq.* (1982) with regard to any toxic substances that are used, generated by or stored on the right-of-way or on facilities authorized under this right-of-way grant (see 40 CFR, Part 702-799 and in particular, provisions on polychlorinated biphenyls, 40 CFR 761.1-761.193). Additionally, any release of toxic substances (leaks, spills, etc.) in excess of the reportable quantity established by 40 CFR, Part 117 shall be reported as required by the Comprehensive Environmental Response, Compensation, and Liability Act, section 102b. A copy of any report required or requested by any Federal agency or State government as a result of a reportable release or spill of any toxic substances shall be furnished to the Authorized Officer concurrent with the filing of the reports to the involved Federal agency or State government.
3. Holder agrees to indemnify the United States against any liability arising from the release of any hazardous substance or hazardous waste (as these terms are defined in the Comprehensive Environmental Response, Compensation and Liability Act of 1980, 42 U.S.C. § 9601, *et seq.* or the

Resource Conservation and Recovery Act, 42 U.S.C. 6901, *et seq.*) on the Right-of-Way (unless the release or threatened release is wholly unrelated to activity of the Right-of-Way Holder's activity on the Right-of-Way), or resulting from the activity of the Right-of-Way Holder on the Right-of-Way. This provision applies without regard to whether a release is caused by Holder, its agent, or unrelated third parties.

4. Holder shall be liable for damage or injury to the United States to the extent provided by 43 CFR Sec. 2883.1-4. Holder shall be held to a standard of strict liability for damage or injury to the United States resulting from pipe rupture, fire, or spills caused or substantially aggravated by any of the following within the right-of-way or permit area:

- a. Activities of Holder including, but not limited to: construction, operation, maintenance, and termination of the facility;
- b. Activities of other parties including, but not limited to:
 - (1) Land clearing
 - (2) Earth-disturbing and earth-moving work
 - (3) Blasting
 - (4) Vandalism and sabotage;

c. Acts of God.

The maximum limitation for such strict liability damages shall not exceed one million dollars (\$1,000,000) for any one event, and any liability in excess of such amount shall be determined by the ordinary rules of negligence of the jurisdiction in which the damage or injury occurred.

This section shall not impose strict liability for damage or injury resulting primarily from an act of war or from the negligent acts or omissions of the United States.

5. If, during any phase of the construction, operation, maintenance, or termination of the pipeline, any oil, salt water, or other pollutant should be discharged from the pipeline system, impacting Federal lands, the control and total removal, disposal, and cleaning up of such oil, salt water, or other pollutant, wherever found, shall be the responsibility of Holder, regardless of fault. Upon failure of Holder to control, dispose of, or clean up such discharge on or affecting Federal lands, or to repair all damages resulting therefrom, on the Federal lands, the Authorized Officer may take such measures as he/she deems necessary to control and clean up the discharge and restore the area, including, where appropriate, the aquatic environment and fish and wildlife habitats, at the full expense of Holder. Such action by the Authorized Officer shall not relieve Holder of any responsibility as provided herein.

6. All construction and maintenance activity shall be confined to the authorized right-of-way width of 30 feet. If the pipeline route follows an existing road or buried pipeline right-of-way, the surface pipeline shall be installed no farther than 10 feet from the edge of the road or buried pipeline right-of-way. If existing surface pipelines prevent this distance, the proposed surface pipeline shall be installed immediately adjacent to the outer surface pipeline. All construction and maintenance activity shall be confined to existing roads or right-of-ways.

7. No blading or clearing of any vegetation shall be allowed unless approved in writing by the Authorized Officer.

8. Holder shall install the pipeline on the surface in such a manner that will minimize suspension of the pipeline across low areas in the terrain. In hummocky or dune areas, the pipeline shall be "snaked" around hummocks and dunes rather than suspended across these features.

9. The pipeline shall be buried with a minimum of 6 inches under all roads, "two-tracks," and trails. Burial of the pipe will continue for 20 feet on each side of each crossing. The

condition of the road, upon completion of construction, shall be returned to at least its former state with no bumps or dips remaining in the road surface.

10. The holder shall minimize disturbance to existing fences and other improvements on public lands. The holder is required to promptly repair improvements to at least their former state. Functional use of these improvements will be maintained at all times. The holder will contact the owner of any improvements prior to disturbing them. When necessary to pass through a fence line, the fence shall be braced on both sides of the passageway prior to cutting of the fence. No permanent gates will be allowed unless approved by the Authorized Officer.

11. In those areas where erosion control structures are required to stabilize soil conditions, the holder will install such structures as are suitable for the specific soil conditions being encountered and which are in accordance with sound resource management practices.

12. Excluding the pipe, all above-ground structures not subject to safety requirement shall be painted by the holder to blend with the natural color of the landscape. The paint used shall be a color which simulates "Standard Environmental Colors" – **Shale Green**, Munsell Soil Color No. 5Y 4/2; designated by the Rocky Mountain Five State Interagency Committee.

13. The pipeline will be identified by signs at the point of origin and completion of the right-of-way and at all road crossings. At a minimum, signs will state the holder's name, BLM serial number, and the product being transported. Signs will be maintained in a legible condition for the life of the pipeline.

14. The holder shall not use the pipeline route as a road for purposes other than routine maintenance as determined necessary by the Authorized Officer in consultation with the holder. The holder will take whatever steps are necessary to ensure that the pipeline route is not used as a roadway.

15. Any cultural resource (historic or prehistoric site or object) discovered by the holder, or any person working on the holder's behalf, on public or Federal land shall be immediately reported to the Authorized Officer. The holder shall suspend all operations in the immediate area of such discovery until written authorization to proceed is issued by the Authorized Officer. An evaluation of the discovery will be made by the Authorized Officer to determine appropriate actions to prevent the loss of significant cultural or scientific values. The holder will be responsible for the cost of evaluation and any decision as to the proper mitigation measures will be made by the Authorized Officer after consulting with the holder.

OR

If the entire project is covered under the Permian Basin Programmatic Agreement (cultural resources only):

The proponent has contributed funds commensurate to the undertaking into an account for offsite mitigation. Participation in the PA serves as mitigation for the effects of this project on cultural resources. If any human skeletal remains, funerary objects, sacred objects, or objects of cultural patrimony are discovered at any time during construction, all construction activities shall halt and the BLM will be notified as soon as possible within 24 hours. Work shall not resume until a Notice to Proceed is issued by the BLM. See Stipulation 16 for more information.

If the proposed project is split between a Class III inventory and a Permian Basin Programmatic Agreement contribution, the portion of the project covered under Class III inventory should default to the first paragraph stipulations.

16. The holder is hereby obligated to comply with procedures established in the Native American Graves Protection and Repatriation Act (NAGPRA) to protect such cultural items as human

remains, associated funerary objects, sacred objects, and objects of cultural patrimony discovered inadvertently during the course of project implementation. In the event that any of the cultural items listed above are discovered during the course of project work, the proponent shall immediately halt the disturbance and contact the BLM within 24 hours for instructions. The proponent or initiator of any project shall be held responsible for protecting, evaluating, reporting, excavating, treating, and disposing of these cultural items according to the procedures established by the BLM in consultation with Indian Tribes."

17. Any paleontological resource (historic or prehistoric site or object) discovered by the holder, or any person working on the holder's behalf, on public or Federal land shall be immediately reported to the Authorized Officer. The holder shall suspend all operations in the immediate area of such discovery until written authorization to proceed is issued by the Authorized Officer. An evaluation of the discovery will be made by the Authorized Officer to determine appropriate actions to prevent the loss of significant cultural or scientific values. The holder will be responsible for the cost of evaluation and any decision as to the proper mitigation measures will be made by the Authorized Officer after consulting with the holder.

18. The operator shall be held responsible if noxious weeds become established within the areas of operations. Weed control shall be required on the disturbed land where noxious weeds exist, which includes the roads, powerline corridor, and adjacent land affected by the establishment of weeds due to this action. The operator shall consult with the Authorized Officer for acceptable weed control methods, which include following EPA and BLM requirements and policies.

19. Surface pipelines shall be less than or equal to 4 inches and a working pressure below 125 psi.

C. ELECTRIC LINES

- Smaller powerlines will be routed around sinkholes and other karst features to avoid or lessen the possibility of encountering near surface voids and to minimize changes to runoff or possible leaks and spills from entering karst systems. Larger powerlines will adjust their pole spacing to avoid cave and karst features.
- The BLM, Carlsbad Field Office, will be informed immediately if any subsurface drainage channels, cave passages, or voids are penetrated during construction.
- No further construction will be done until clearance has been issued by the Authorized Officer.
- Special restoration stipulations or realignment may be required.

STANDARD STIPULATIONS FOR OVERHEAD ELECTRIC DISTRIBUTION LINES

A copy of the grant and attachments, including stipulations, survey plat and/or map, will be on location during construction. BLM personnel may request to you a copy of your permit during construction to ensure compliance with all stipulations.

Holder agrees to comply with the following stipulations to the satisfaction of the Authorized Officer:

1. The holder shall indemnify the United States against any liability for damage to life or property arising from the occupancy or use of public lands under this grant.
2. The holder shall comply with all applicable Federal laws and regulations existing or hereafter enacted or promulgated. In any event, the holder shall comply with the Toxic Substances Control Act of 1976 as amended, 15 USC 2601 et seq. (1982) with regards to any toxic substances that are used, generated by or stored on the right-of-way or on facilities authorized under this right-of-way grant. (See 40 CFR, Part 702-799 and especially, provisions on polychlorinated biphenyls,

40 CFR 761.1-761.193.) Additionally, any release of toxic substances (leaks, spills, etc.) in excess of the reportable quantity established by 40 CFR, Part 117 shall be reported as required by the Comprehensive Environmental Response, Compensation, and Liability Act, section 102b. A copy of any report required or requested by any Federal agency or State government as a result of a reportable release or spill of any toxic substances shall be furnished to the authorized officer concurrent with the filing of the reports to the involved Federal agency or State government.

3. The holder agrees to indemnify the United States against any liability arising from the release of any hazardous substance or hazardous waste (as these terms are defined in the Comprehensive Environmental Response, Compensation and Liability Act of 1980, 42 U.S.C. 9601, et seq. or the Resource Conservation and Recovery Act, 42 U.S.C. 6901, et seq.) on the Right-of-Way (unless the release or threatened release is wholly unrelated to the Right-of-Way holder's activity on the Right-of-Way), or resulting from the activity of the Right-of-Way holder on the Right-of-Way. This agreement applies without regard to whether a release is caused by the holder, its agent, or unrelated third parties.

4. There will be no clearing or blading of the right-of-way unless otherwise agreed to in writing by the Authorized Officer.

5. Power lines shall be constructed and designed in accordance to standards outlined in "Suggested Practices for Avian Protection on Power lines: The State of the Art in 2006" Edison Electric Institute, APLIC, and the California Energy Commission 2006 . The holder shall assume the burden and expense of proving that pole designs not shown in the above publication deter raptor perching, roosting, and nesting. Such proof shall be provided by a raptor expert approved by the Authorized Officer. The BLM reserves the right to require modification or additions to all powerline structures placed on this right-of-way, should they be necessary to ensure the safety of large perching birds. Such modifications and/or additions shall be made by the holder without liability or expense to the United States.

Raptor deterrence will consist of but not limited to the following: triangle perch discouragers shall be placed on each side of the cross arms and a nonconductive perching deterrence shall be placed on all vertical poles that extend past the cross arms.

6. The holder shall minimize disturbance to existing fences and other improvements on public lands. The holder is required to promptly repair improvements to at least their former state. Functional use of these improvements will be maintained at all times. The holder will contact the owner of any improvements prior to disturbing them. When necessary to pass through a fence line, the fence shall be braced on both sides of the passageway prior to cutting the fence. No permanent gates will be allowed unless approved by the Authorized Officer.

7. The BLM serial number assigned to this authorization shall be posted in a permanent, conspicuous manner where the power line crosses roads and at all serviced facilities. Numbers will be at least two inches high and will be affixed to the pole nearest the road crossing and at the facilities served.

8. Upon cancellation, relinquishment, or expiration of this grant, the holder shall comply with those abandonment procedures as prescribed by the Authorized Officer.

9. All surface structures (poles, lines, transformers, etc.) shall be removed within 180 days of abandonment, relinquishment, or termination of use of the serviced facility or facilities or within 180 days of abandonment, relinquishment, cancellation, or expiration of this grant, whichever comes first. This will not apply where the power line extends service to an active, adjoining facility or facilities.

10. Any cultural resource (historic or prehistoric site or object) discovered by the holder, or any

person working on the holder's behalf, on public or Federal land shall be immediately reported to the Authorized Officer. The holder shall suspend all operations in the immediate area of such discovery until written authorization to proceed is issued by the Authorized Officer. An evaluation of the discovery will be made by the Authorized Officer to determine appropriate actions to prevent the loss of significant cultural or scientific values. The holder will be responsible for the cost of evaluation and any decision as to the proper mitigation measures will be made by the Authorized Officer after consulting with the holder.

OR

If the entire project is covered under the Permian Basin Programmatic Agreement (cultural resources only):

The proponent has contributed funds commensurate to the undertaking into an account for offsite mitigation. Participation in the PA serves as mitigation for the effects of this project on cultural resources. If any human skeletal remains, funerary objects, sacred objects, or objects of cultural patrimony are discovered at any time during construction, all construction activities shall halt and the BLM will be notified as soon as possible within 24 hours. Work shall not resume until a Notice to Proceed is issued by the BLM. See Stipulation 11 for more information.

If the proposed project is split between a Class III inventory and a Permian Basin Programmatic Agreement contribution, the portion of the project covered under Class III inventory should default to the first paragraph stipulations.

11. The holder is hereby obligated to comply with procedures established in the Native American Graves Protection and Repatriation Act (NAGPRA) to protect such cultural items as human remains, associated funerary objects, sacred objects, and objects of cultural patrimony discovered inadvertently during the course of project implementation. In the event that any of the cultural items listed above are discovered during the course of project work, the proponent shall immediately halt the disturbance and contact the BLM within 24 hours for instructions. The proponent or initiator of any project shall be held responsible for protecting, evaluating, reporting, excavating, treating, and disposing of these cultural items according to the procedures established by the BLM in consultation with Indian Tribes."

12. Any paleontological resource (historic or prehistoric site or object) discovered by the holder, or any person working on the holder's behalf, on public or Federal land shall be immediately reported to the Authorized Officer. The holder shall suspend all operations in the immediate area of such discovery until written authorization to proceed is issued by the Authorized Officer. An evaluation of the discovery will be made by the Authorized Officer to determine appropriate actions to prevent the loss of significant cultural or scientific values. The holder will be responsible for the cost of evaluation and any decision as to the proper mitigation measures will be made by the Authorized Officer after consulting with the holder.

13. Special Stipulations:

For reclamation remove poles, lines, transformer, etc. and dispose of properly.
Fill in any holes from the poles removed.

VII. INTERIM RECLAMATION

During the life of the development, all disturbed areas not needed for active support of production operations should undergo interim reclamation in order to minimize the environmental impacts of development on other resources and uses.

Within six (6) months of well completion, operators should work with BLM surface management specialists (Jim Amos: 575-234-5909) to devise the best strategies to reduce the size of the

location. Interim reclamation should allow for remedial well operations, as well as safe and efficient removal of oil and gas.

During reclamation, the removal of caliche is important to increasing the success of revegetating the site. Removed caliche that is free of contaminants may be used for road repairs, fire walls or for building other roads and locations. In order to operate the well or complete workover operations, it may be necessary to drive, park and operate on restored interim vegetation within the previously disturbed area. Disturbing revegetated areas for production or workover operations will be allowed. If there is significant disturbance and loss of vegetation, the area will need to be revegetated. Communicate with the appropriate BLM office for any exceptions/exemptions if needed.

All disturbed areas after they have been satisfactorily prepared need to be reseeded with the seed mixture provided below.

Upon completion of interim reclamation, the operator shall submit a Sundry Notices and Reports on Wells, Subsequent Report of Reclamation (Form 3160-5).

VIII. FINAL ABANDONMENT & RECLAMATION

At final abandonment, well locations, production facilities, and access roads must undergo "final" reclamation so that the character and productivity of the land are restored.

Earthwork for final reclamation must be completed within six (6) months of well plugging. All pads, pits, facility locations and roads must be reclaimed to a satisfactory revegetated, safe, and stable condition, unless an agreement is made with the landowner or BLM to keep the road and/or pad intact.

After all disturbed areas have been satisfactorily prepared, these areas need to be revegetated with the seed mixture provided below. Seeding should be accomplished by drilling on the contour whenever practical or by other approved methods. Seeding may need to be repeated until revegetation is successful, as determined by the BLM.

Operators shall contact a BLM surface protection specialist prior to surface abandonment operations for site specific objectives (Jim Amos: 575-234-5909).

Ground-level Abandoned Well Marker to avoid raptor perching: Upon the plugging and subsequent abandonment of the well, the well marker will be installed at ground level on a plate containing the pertinent information for the plugged well.

Seed Mixture 2, for Sandy Sites

The holder shall seed all disturbed areas with the seed mixture listed below. The seed mixture shall be planted in the amounts specified in pounds of pure live seed (PLS)* per acre. There shall be no primary or secondary noxious weeds in the seed mixture. Seed will be tested and the viability testing of seed will be done in accordance with State law (s) and within nine (9) months prior to purchase. Commercial seed will be either certified or registered seed. The seed container will be tagged in accordance with State law(s) and available for inspection by the authorized officer.

Seed will be planted using a drill equipped with a depth regulator to ensure proper depth of planting where drilling is possible. The seed mixture will be evenly and uniformly planted over the disturbed area (smaller/heavier seeds have a tendency to drop the bottom of the drill and are planted first). The holder shall take appropriate measures to ensure this does not occur. Where drilling is not possible, seed will be broadcast and the area shall be raked or chained to cover the seed. When broadcasting the seed, the pounds per acre are to be doubled. The seeding will be repeated until a satisfactory stand is established as determined by the authorized officer. Evaluation of growth will not be made before completion of at least one full growing season after seeding.

Species to be planted in pounds of pure live seed* per acre:

Species

	<u>lb/acre</u>
Sand dropseed (<i>Sporobolus cryptandrus</i>)	1.0
Sand love grass (<i>Eragrostis trichodes</i>)	1.0
Plains bristlegrass (<i>Setaria macrostachya</i>)	2.0

*Pounds of pure live seed:

Pounds of seed x percent purity x percent germination = pounds pure live seed

TITUS

Oil & Gas LLC

TITUS Oil & Gas Production, LLC

100 Throckmorton Street

Suite 1630

Fort Worth, TX 76102

Hydrogen Sulfide (H₂S) Contingency Plan

For

Lonesome Dove Fed Com 112H

Sec-17 T-26S R-35E

1818 FSL & 2020' FWL

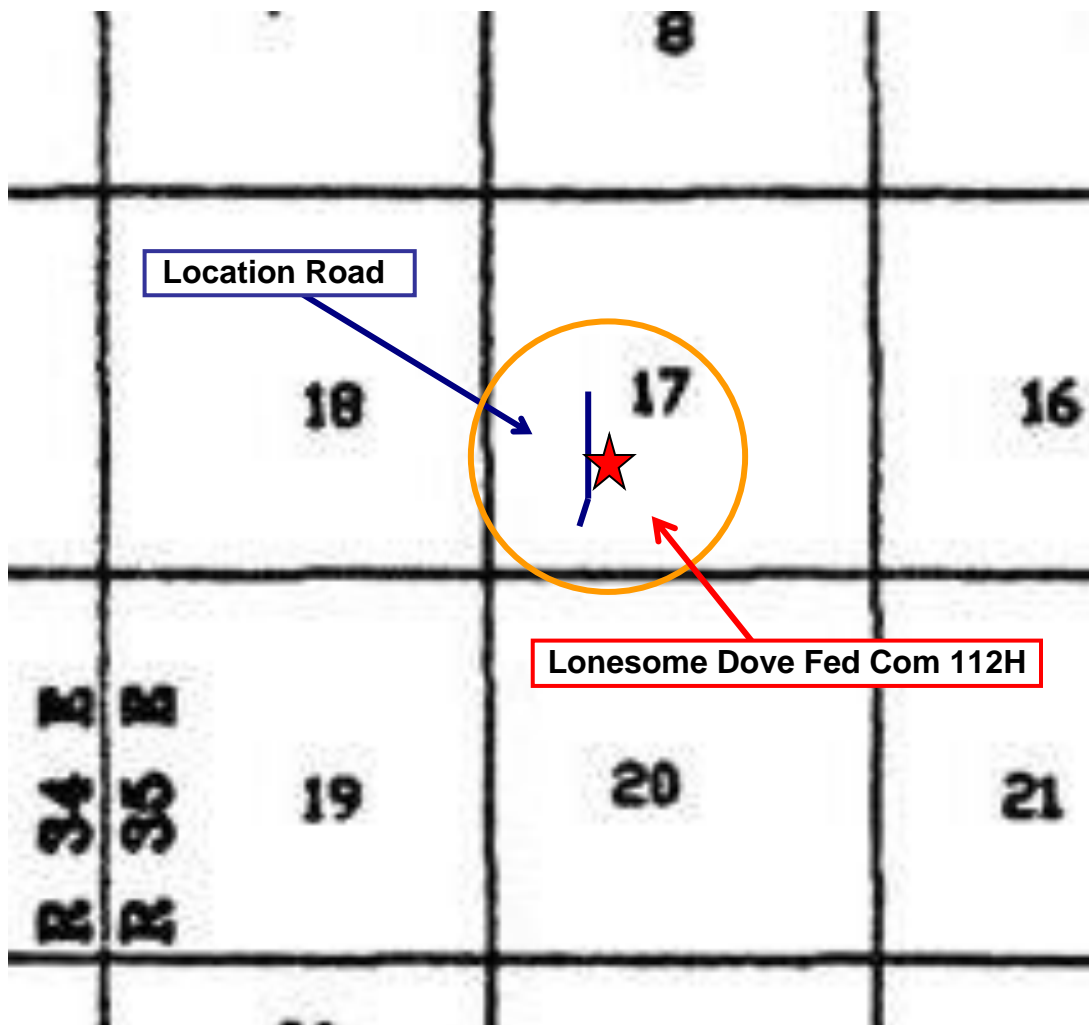
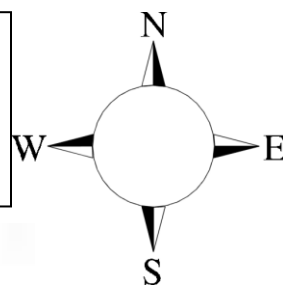
LAT. = 32.04104081' N (NAD83)

LONG = 103.39145255' W

Lea County NM

Lonesome Dove Fed Com 112H

This is an open drilling site. H₂S monitoring equipment and emergency response equipment will be used within 500' of zones known to contain H₂S, including warning signs, wind indicators and H₂S monitor.



Assumed 100 ppm **ROE = 3000'** (Radius of Exposure)
100 ppm H₂S concentration shall trigger activation of this plan.

Escape

Crews shall escape upwind of escaping gas in the event of an emergency release of gas. Escape can be facilitated from the location entrance road. Crews should then block the entrance to the location from the lease road so as not to allow anyone traversing into a hazardous area. The blockade should be at a safe distance outside of the ROE. There are no homes or buildings in or near the ROE.

Assumed 100 ppm ROE = 3000'

100 ppm H₂S concentration shall trigger activation of this plan.

Emergency Procedures

In the event of a release of gas containing H₂S, the first responder(s) must

- Isolate the area and prevent entry by other persons into the 100 ppm ROE.
- Evacuate any public places encompassed by the 100 ppm ROE.
- Be equipped with H₂S monitors and air packs in order to control the release.
- Use the “buddy system” to ensure no injuries occur during the response
- Take precautions to avoid personal injury during this operation.
- Contact operator and/or local officials to aid in operation. See list of phone numbers attached.
- Have received training in the
 - Detection of H₂S, and
 - Measures for protection against the gas,
 - Equipment used for protection and emergency response.

Ignition of Gas Source

Should control of the well be considered lost and ignition considered, take care to protect against exposure to Sulfur Dioxide (SO₂). Intentional ignition must be coordinated with the NMOCD and local officials. Additionally the NM State Police may become involved. NM State Police shall be the Incident Command on scene of any major release. Take care to protect downwind whenever there is an ignition of the gas

Characteristics of H₂S and SO₂

Common Name	Chemical Formula	Specific Gravity	Threshold Limit	Hazardous Limit	Lethal Concentration
Hydrogen Sulfide	H ₂ S	1.189 Air = 1	10 ppm	100 ppm/hr	600 ppm
Sulfur Dioxide	SO ₂	2.21 Air = 1	2 ppm	N/A	1000 ppm

Contacting Authorities

Titus Oil & Gas personnel must liaison with local and state agencies to ensure a proper response to a major release. Additionally, the OCD must be notified of the release as soon as possible but no later than 4 hours. Agencies will ask for information such as type and volume of release, wind direction, location of release, etc. Be prepared with all information available. The following call list of essential and potential responders has been prepared for use during a release. Titus Oil & Gas Company response must be in coordination with the State of New Mexico's 'Hazardous Materials Emergency Response Plan' (HMER)

Hydrogen Sulfide Drilling Operation Plan

I. HYDROGEN SULFIDE (H₂S) TRAINING

All personnel, whether regularly assigned, contracted, or employed on an unscheduled basis, will receive training from a qualified instructor in the following areas prior to commencing drilling operations on this well:

1. The hazards and characteristics of hydrogen sulfide (H₂S)
2. The proper use and maintenance of personal protective equipment and life support systems.
3. The proper use of H₂S detectors, alarms, warning systems, briefing areas, evacuation procedures, and prevailing winds.
4. The proper techniques for first aid and rescue procedures.

In addition, supervisory personnel will be trained in the following areas:

1. The effects of H₂S metal components. If high tensile tubulars are to be used, personnel will be trained in their special maintenance requirements.
2. Corrective action and shut-in procedures when drilling or reworking a well and blowout prevention and well control procedures.
3. The contents and requirements of the H₂S Drilling Operations Plan and Public Protection Plan.

There will be an initial training session just prior to encountering a known or probable H₂S zone (within 3 days or 500 feet) and weekly H₂S and well control drills for all personnel in each crew. The initial training session shall include a review of the site specific H₂S Drilling Operations Plan and the Public Protection Plan.

II. HYDROGEN SULFIDE TRAINING

Note: All H₂S safety equipment and systems will be installed, tested, and operational when drilling reaches a depth of 500 feet above, or three days prior to penetrating the first zone containing or reasonably expected to contain H₂S.

1. Well Control Equipment

- A. Flare line
- B. Choke manifold – Remotely Operated
- C. Blind rams and pipe rams to accommodate all pipe sizes with properly sized closing unit
- D. Auxiliary equipment may include if applicable: annular preventer and rotating head.
- E. Mud/Gas Separator

2. Protective equipment for essential personnel:

30-minute SCBA units located at briefing areas, as indicated on well site diagram, with escape units available in the top doghouse. As it may be difficult to communicate audibly while wearing these units, hand signals shall be utilized.

3. H₂S detection and monitoring equipment:

Portable H₂S monitors positioned on location for best coverage and response. These units have warning lights which activate when H₂S levels reach 10 ppm and audible sirens which activate at 15 ppm. Sensor locations:

- Bell nipple
- Possum Belly/Shale shaker
- Rig floor
- Choke manifold
- Cellar

Visual warning systems:

- A. Wind direction indicators as shown on well site diagram
- B. Caution/ Danger signs shall be posted on roads providing direct access to locations. Signs will be painted a high visibility yellow with black lettering of sufficient size to be reasonable distance from the immediate location. Bilingual signs will be used when appropriate.

4. Mud program:

The mud program has been designed to minimize the volume of H₂S circulated to surface. Proper mud weight, safe drilling practices and the use of H₂S scavengers will minimize hazards when penetrating H₂S bearing zones.

5. Metallurgy:

- A. All drill strings, casings, tubing, wellhead, blowout preventer, drilling spool, kill lines, choke manifold lines, and valves shall be H₂S trim.
- B. All elastomers used for packing and seals shall be H₂S trim.

6. Communication:

- A. Company personnel have/use cellular telephones in the field.
- B. Land line (telephone) communications at Office

7. Well testing:

- A. Drill stem testing will be performed with a minimum number of personnel in the immediate vicinity, which are necessary to safety and adequately conduct the test. The drill stem testing will be conducted during daylight hours and formation fluids will not be flowed to the surface. All drill-stem-testing operations conducted in an H₂S environment will use the closed chamber method of testing.
- B. There will be no drill stem testing.

<u>Titus Oil & Gas Company Call List</u>		
Drilling Supervisor –		
Ryan DeLong - Office (817) 852-6370 Mobile (405) 664-5188		
<u>Agency Call List</u>		
<u>Lea County (575)</u>	Hobbs	
	Lea County Communication Authority	393-3981
	State Police	392-5588
	City Police	397-9265
	Sheriff's Office	393-2515
	Ambulance	911
	Fire Department	397-9308
	LEPC (Local Emergency Planning Committee)	393-2870
	NMOCD	393-6161
	US Bureau of Land Management	393-3612
<u>Eddy County (575)</u>	Carlsbad	
	State Police	885-3137
	City Police	885-2111
	Sheriff's Office	887-7551
	Ambulance	911
	Fire Department	885-3125
	LEPC (Local Emergency Planning Committee)	887-3798
	US Bureau of Land Management	887-6544
	NM Emergency Response Commission (Santa Fe)	(505) 476-9600
	24 HR	(505) 827-9126
	National Emergency Response Center	(800) 424-8802
	National Pollution Control Center: Direct	(703) 872-6000
	For Oil Spills	(800) 280-7118
	Emergency Services	
	Wild Well Control	(281) 784-4700
	Cudd Pressure Control	915-699-0139 (915) 563-3356
	Halliburton	(575) 746-2757
	B. J. Services	(575) 746-3569
<u>Give GPS position:</u>	Native Air – Emergency Helicopter – Hobbs	(575) 392-6429
	Flight For Life - Lubbock, TX	(806) 743-9911
	Aerocare - Lubbock, TX	(806) 747-8923
	Med Flight Air Amb - Albuquerque, NM	(575) 842-4433
	Lifeguard Air Med Svc. Albuquerque, NM	(800) 222-1222
	Poison Control (24/7)	(575) 272-3115
	Oil & Gas Pipeline 24 Hour Service	(800) 364-4366
	NOAA – Website - www.nhc.noaa.gov	

Prepared in conjunction with

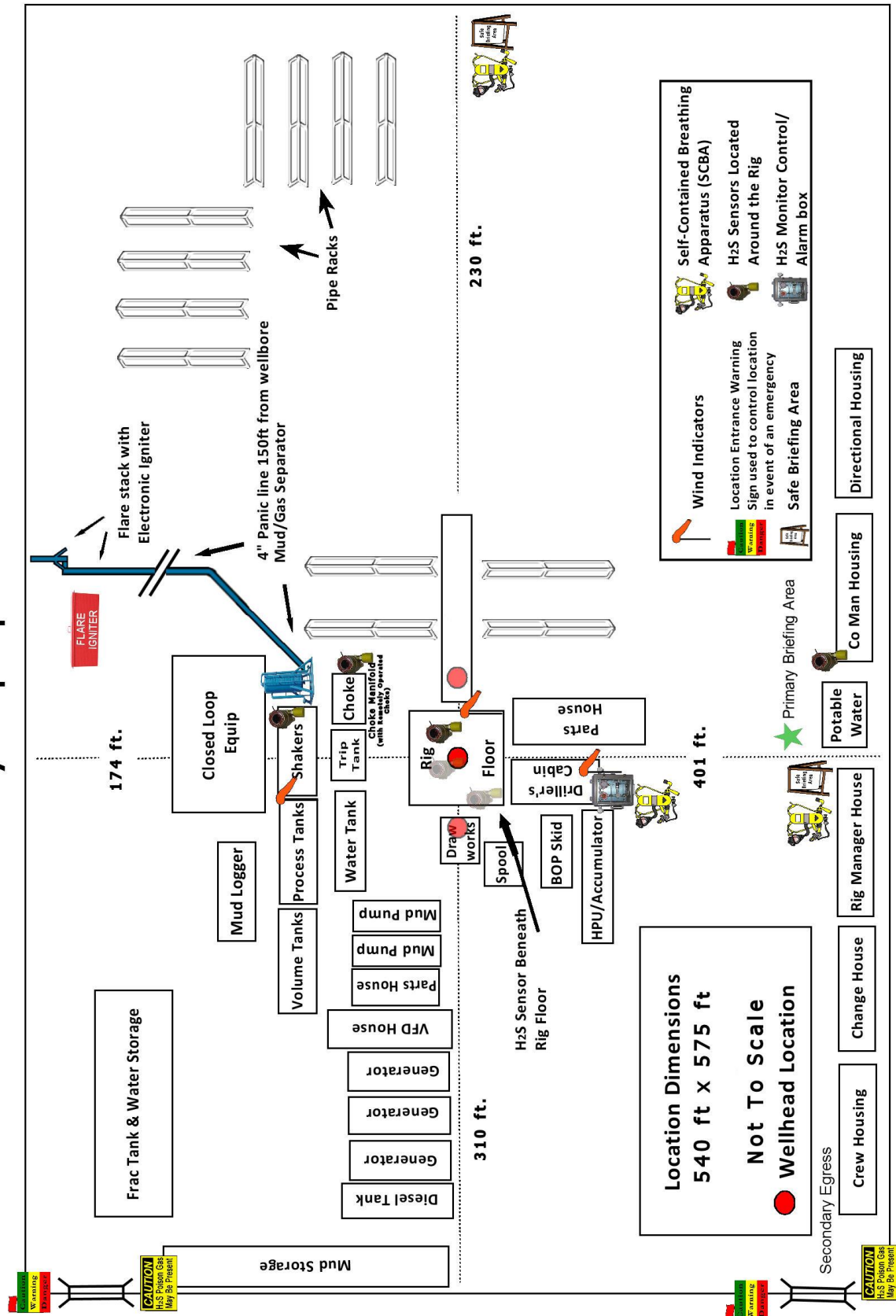
Dave Small



TITUS Oil & Gas Production - Well Pad

Rig Location Layout

Safety Equipment Location





Titus Oil & Gas Production, LLC

Lea County, NM (NAD83-NME)

A03_Lonesome Dove

Lonesome Dove Fed Com #112H - Slot A02

#112H

Plan: Plan #1

Standard Planning Report

16 January, 2020



Planning Report

Database:	EDM 5000.14 Single User Db	Local Co-ordinate Reference:	Well Lonesome Dove Fed Com #112H - Slot A02
Company:	Titus Oil & Gas Production, LLC	TVD Reference:	3217+25 @ 3242.00usft
Project:	Lea County, NM (NAD83-NME)	MD Reference:	3217+25 @ 3242.00usft
Site:	A03_Lonesome Dove	North Reference:	Grid
Well:	Lonesome Dove Fed Com #112H	Survey Calculation Method:	Minimum Curvature
Wellbore:	#112H		
Design:	Plan #1		

Project	Lea County, NM (NAD83-NME)		
Map System:	US State Plane 1983	System Datum:	Mean Sea Level
Geo Datum:	North American Datum 1983		
Map Zone:	New Mexico Eastern Zone		

Site	A03_Lonesome Dove				
Site Position:		Northing:	379,941.34 usft	Latitude:	32.04104074
From:	Map	Easting:	833,154.90 usft	Longitude:	-103.39154957
Position Uncertainty:	0.00 usft	Slot Radius:	13-3/16 "	Grid Convergence:	0.50 °

Well	Lonesome Dove Fed Com #112H - Slot A02					
Well Position	+N/-S	0.29 usft	Northing:	379,941.63 usft	Latitude:	32.04104082
	+E/-W	30.06 usft	Easting:	833,184.96 usft	Longitude:	-103.39145256
Position Uncertainty		0.00 usft	Wellhead Elevation:		Ground Level:	3,217.00 usft

Wellbore	#112H				
Magnetics	Model Name	Sample Date	Declination (°)	Dip Angle (°)	Field Strength (nT)
	IGRF2020	1/14/2020	6.61	59.81	47,553.14228150

Design	Plan #1				
Audit Notes:					
Version:	Phase:	PLAN	Tie On Depth:	0.00	
Vertical Section:	Depth From (TVD) (usft)	+N/-S (usft)	+E/-W (usft)	Direction (°)	
	0.00	0.00	0.00	359.40	

Plan Survey Tool Program	Date	1/16/2020			
Depth From (usft)	Depth To (usft)	Survey (Wellbore)	Tool Name	Remarks	
1	0.00	18,741.87	Plan #1 (#112H)	MWD+IFR1+SAG+MS	
				OWSG MWD + IFR1 + Sag + M	



Planning Report

Database:	EDM 5000.14 Single User Db	Local Co-ordinate Reference:	Well Lonesome Dove Fed Com #112H - Slot A02
Company:	Titus Oil & Gas Production, LLC	TVD Reference:	3217+25 @ 3242.00usft
Project:	Lea County, NM (NAD83-NME)	MD Reference:	3217+25 @ 3242.00usft
Site:	A03_Lonesome Dove	North Reference:	Grid
Well:	Lonesome Dove Fed Com #112H	Survey Calculation Method:	Minimum Curvature
Wellbore:	#112H		
Design:	Plan #1		

Plan Sections										
Measured Depth (usft)	Inclination (°)	Azimuth (°)	Vertical Depth (usft)	+N/-S (usft)	+E/-W (usft)	Dogleg Rate (°/100usft)	Build Rate (°/100usft)	Turn Rate (°/100usft)	TFO (°)	Target
0.00	0.00	0.00	0.00	0.00	0.00	0.00	0.00	0.00	0.00	
1,500.00	0.00	0.00	1,500.00	0.00	0.00	0.00	0.00	0.00	0.00	
1,687.61	2.81	343.89	1,687.53	4.43	-1.28	1.50	1.50	0.00	343.89	
8,620.91	2.81	343.89	8,612.47	331.45	-95.72	0.00	0.00	0.00	0.00	
8,808.51	0.00	0.00	8,800.00	335.88	-97.00	1.50	-1.50	0.00	180.00	
9,976.51	0.00	0.00	9,968.00	335.88	-97.00	0.00	0.00	0.00	0.00	
10,883.51	90.70	343.85	10,540.92	892.95	-258.32	10.00	10.00	0.00	343.85	
11,133.51	90.70	343.85	10,537.86	1,133.06	-327.85	0.00	0.00	0.00	0.00	
11,522.12	90.70	359.40	10,533.09	1,516.32	-384.29	4.00	0.00	4.00	89.91	
18,741.87	90.70	359.40	10,445.00	8,735.13	-460.46	0.00	0.00	0.00	0.00	A03-PBHL(112H)



Planning Report

Database:	EDM 5000.14 Single User Db	Local Co-ordinate Reference:	Well Lonesome Dove Fed Com #112H - Slot A02
Company:	Titus Oil & Gas Production, LLC	TVD Reference:	3217+25 @ 3242.00usft
Project:	Lea County, NM (NAD83-NME)	MD Reference:	3217+25 @ 3242.00usft
Site:	A03_Lonesome Dove	North Reference:	Grid
Well:	Lonesome Dove Fed Com #112H	Survey Calculation Method:	Minimum Curvature
Wellbore:	#112H		
Design:	Plan #1		

Planned Survey									
Measured Depth (usft)	Inclination (°)	Azimuth (°)	Vertical Depth (usft)	+N/-S (usft)	+E/-W (usft)	Vertical Section (usft)	Dogleg Rate (°/100usft)	Build Rate (°/100usft)	Turn Rate (°/100usft)
0.00	0.00	0.00	0.00	0.00	0.00	0.00	0.00	0.00	0.00
1.00	0.00	0.00	1.00	0.00	0.00	0.00	0.00	0.00	0.00
A03-TW(Lat1)									
100.00	0.00	0.00	100.00	0.00	0.00	0.00	0.00	0.00	0.00
200.00	0.00	0.00	200.00	0.00	0.00	0.00	0.00	0.00	0.00
300.00	0.00	0.00	300.00	0.00	0.00	0.00	0.00	0.00	0.00
400.00	0.00	0.00	400.00	0.00	0.00	0.00	0.00	0.00	0.00
500.00	0.00	0.00	500.00	0.00	0.00	0.00	0.00	0.00	0.00
600.00	0.00	0.00	600.00	0.00	0.00	0.00	0.00	0.00	0.00
700.00	0.00	0.00	700.00	0.00	0.00	0.00	0.00	0.00	0.00
800.00	0.00	0.00	800.00	0.00	0.00	0.00	0.00	0.00	0.00
900.00	0.00	0.00	900.00	0.00	0.00	0.00	0.00	0.00	0.00
1,000.00	0.00	0.00	1,000.00	0.00	0.00	0.00	0.00	0.00	0.00
1,100.00	0.00	0.00	1,100.00	0.00	0.00	0.00	0.00	0.00	0.00
1,200.00	0.00	0.00	1,200.00	0.00	0.00	0.00	0.00	0.00	0.00
1,300.00	0.00	0.00	1,300.00	0.00	0.00	0.00	0.00	0.00	0.00
1,400.00	0.00	0.00	1,400.00	0.00	0.00	0.00	0.00	0.00	0.00
1,500.00	0.00	0.00	1,500.00	0.00	0.00	0.00	0.00	0.00	0.00
1,600.00	1.50	343.89	1,599.99	1.26	-0.36	1.26	1.50	1.50	0.00
1,687.61	2.81	343.89	1,687.53	4.43	-1.28	4.44	1.50	1.50	0.00
1,700.00	2.81	343.89	1,699.91	5.01	-1.45	5.02	0.00	0.00	0.00
1,800.00	2.81	343.89	1,799.79	9.73	-2.81	9.76	0.00	0.00	0.00
1,900.00	2.81	343.89	1,899.67	14.44	-4.17	14.49	0.00	0.00	0.00
2,000.00	2.81	343.89	1,999.55	19.16	-5.53	19.22	0.00	0.00	0.00
2,100.00	2.81	343.89	2,099.43	23.88	-6.90	23.95	0.00	0.00	0.00
2,200.00	2.81	343.89	2,199.31	28.59	-8.26	28.68	0.00	0.00	0.00
2,300.00	2.81	343.89	2,299.19	33.31	-9.62	33.41	0.00	0.00	0.00
2,400.00	2.81	343.89	2,399.07	38.03	-10.98	38.14	0.00	0.00	0.00
2,500.00	2.81	343.89	2,498.94	42.74	-12.34	42.87	0.00	0.00	0.00
2,600.00	2.81	343.89	2,598.82	47.46	-13.71	47.60	0.00	0.00	0.00
2,700.00	2.81	343.89	2,698.70	52.18	-15.07	52.33	0.00	0.00	0.00
2,800.00	2.81	343.89	2,798.58	56.89	-16.43	57.06	0.00	0.00	0.00
2,900.00	2.81	343.89	2,898.46	61.61	-17.79	61.79	0.00	0.00	0.00
3,000.00	2.81	343.89	2,998.34	66.33	-19.16	66.52	0.00	0.00	0.00
3,100.00	2.81	343.89	3,098.22	71.04	-20.52	71.26	0.00	0.00	0.00
3,200.00	2.81	343.89	3,198.10	75.76	-21.88	75.99	0.00	0.00	0.00
3,300.00	2.81	343.89	3,297.98	80.48	-23.24	80.72	0.00	0.00	0.00
3,400.00	2.81	343.89	3,397.86	85.19	-24.60	85.45	0.00	0.00	0.00
3,500.00	2.81	343.89	3,497.74	89.91	-25.97	90.18	0.00	0.00	0.00
3,600.00	2.81	343.89	3,597.62	94.63	-27.33	94.91	0.00	0.00	0.00
3,700.00	2.81	343.89	3,697.50	99.35	-28.69	99.64	0.00	0.00	0.00
3,800.00	2.81	343.89	3,797.38	104.06	-30.05	104.37	0.00	0.00	0.00
3,900.00	2.81	343.89	3,897.26	108.78	-31.41	109.10	0.00	0.00	0.00
4,000.00	2.81	343.89	3,997.14	113.50	-32.78	113.83	0.00	0.00	0.00
4,100.00	2.81	343.89	4,097.02	118.21	-34.14	118.56	0.00	0.00	0.00
4,200.00	2.81	343.89	4,196.89	122.93	-35.50	123.29	0.00	0.00	0.00
4,300.00	2.81	343.89	4,296.77	127.65	-36.86	128.02	0.00	0.00	0.00
4,400.00	2.81	343.89	4,396.65	132.36	-38.23	132.76	0.00	0.00	0.00
4,500.00	2.81	343.89	4,496.53	137.08	-39.59	137.49	0.00	0.00	0.00
4,600.00	2.81	343.89	4,596.41	141.80	-40.95	142.22	0.00	0.00	0.00
4,700.00	2.81	343.89	4,696.29	146.51	-42.31	146.95	0.00	0.00	0.00
4,800.00	2.81	343.89	4,796.17	151.23	-43.67	151.68	0.00	0.00	0.00
4,900.00	2.81	343.89	4,896.05	155.95	-45.04	156.41	0.00	0.00	0.00



Planning Report

Database:	EDM 5000.14 Single User Db	Local Co-ordinate Reference:	Well Lonesome Dove Fed Com #112H - Slot A02
Company:	Titus Oil & Gas Production, LLC	TVD Reference:	3217+25 @ 3242.00usft
Project:	Lea County, NM (NAD83-NME)	MD Reference:	3217+25 @ 3242.00usft
Site:	A03_Lonesome Dove	North Reference:	Grid
Well:	Lonesome Dove Fed Com #112H	Survey Calculation Method:	Minimum Curvature
Wellbore:	#112H		
Design:	Plan #1		

Planned Survey										
Measured Depth (usft)	Inclination (°)	Azimuth (°)	Vertical Depth (usft)	+N/-S (usft)	+E/-W (usft)	Vertical Section (usft)	Dogleg Rate (°/100usft)	Build Rate (°/100usft)	Turn Rate (°/100usft)	
5,000.00	2.81	343.89	4,995.93	160.66	-46.40	161.14	0.00	0.00	0.00	
5,100.00	2.81	343.89	5,095.81	165.38	-47.76	165.87	0.00	0.00	0.00	
5,200.00	2.81	343.89	5,195.69	170.10	-49.12	170.60	0.00	0.00	0.00	
5,300.00	2.81	343.89	5,295.57	174.81	-50.49	175.33	0.00	0.00	0.00	
5,400.00	2.81	343.89	5,395.45	179.53	-51.85	180.06	0.00	0.00	0.00	
5,500.00	2.81	343.89	5,495.33	184.25	-53.21	184.79	0.00	0.00	0.00	
5,600.00	2.81	343.89	5,595.21	188.96	-54.57	189.52	0.00	0.00	0.00	
5,700.00	2.81	343.89	5,695.09	193.68	-55.93	194.26	0.00	0.00	0.00	
5,800.00	2.81	343.89	5,794.97	198.40	-57.30	198.99	0.00	0.00	0.00	
5,900.00	2.81	343.89	5,894.85	203.11	-58.66	203.72	0.00	0.00	0.00	
6,000.00	2.81	343.89	5,994.72	207.83	-60.02	208.45	0.00	0.00	0.00	
6,100.00	2.81	343.89	6,094.60	212.55	-61.38	213.18	0.00	0.00	0.00	
6,200.00	2.81	343.89	6,194.48	217.26	-62.74	217.91	0.00	0.00	0.00	
6,300.00	2.81	343.89	6,294.36	221.98	-64.11	222.64	0.00	0.00	0.00	
6,400.00	2.81	343.89	6,394.24	226.70	-65.47	227.37	0.00	0.00	0.00	
6,500.00	2.81	343.89	6,494.12	231.41	-66.83	232.10	0.00	0.00	0.00	
6,600.00	2.81	343.89	6,594.00	236.13	-68.19	236.83	0.00	0.00	0.00	
6,700.00	2.81	343.89	6,693.88	240.85	-69.56	241.56	0.00	0.00	0.00	
6,800.00	2.81	343.89	6,793.76	245.56	-70.92	246.29	0.00	0.00	0.00	
6,900.00	2.81	343.89	6,893.64	250.28	-72.28	251.02	0.00	0.00	0.00	
7,000.00	2.81	343.89	6,993.52	255.00	-73.64	255.76	0.00	0.00	0.00	
7,100.00	2.81	343.89	7,093.40	259.71	-75.00	260.49	0.00	0.00	0.00	
7,200.00	2.81	343.89	7,193.28	264.43	-76.37	265.22	0.00	0.00	0.00	
7,300.00	2.81	343.89	7,293.16	269.15	-77.73	269.95	0.00	0.00	0.00	
7,400.00	2.81	343.89	7,393.04	273.87	-79.09	274.68	0.00	0.00	0.00	
7,500.00	2.81	343.89	7,492.92	278.58	-80.45	279.41	0.00	0.00	0.00	
7,600.00	2.81	343.89	7,592.80	283.30	-81.82	284.14	0.00	0.00	0.00	
7,700.00	2.81	343.89	7,692.67	288.02	-83.18	288.87	0.00	0.00	0.00	
7,800.00	2.81	343.89	7,792.55	292.73	-84.54	293.60	0.00	0.00	0.00	
7,900.00	2.81	343.89	7,892.43	297.45	-85.90	298.33	0.00	0.00	0.00	
8,000.00	2.81	343.89	7,992.31	302.17	-87.26	303.06	0.00	0.00	0.00	
8,100.00	2.81	343.89	8,092.19	306.88	-88.63	307.79	0.00	0.00	0.00	
8,200.00	2.81	343.89	8,192.07	311.60	-89.99	312.52	0.00	0.00	0.00	
8,300.00	2.81	343.89	8,291.95	316.32	-91.35	317.26	0.00	0.00	0.00	
8,400.00	2.81	343.89	8,391.83	321.03	-92.71	321.99	0.00	0.00	0.00	
8,500.00	2.81	343.89	8,491.71	325.75	-94.08	326.72	0.00	0.00	0.00	
8,600.00	2.81	343.89	8,591.59	330.47	-95.44	331.45	0.00	0.00	0.00	
8,620.91	2.81	343.89	8,612.47	331.45	-95.72	332.44	0.00	0.00	0.00	
8,700.00	1.63	343.89	8,691.50	334.40	-96.57	335.39	1.50	-1.50	0.00	
8,808.51	0.00	0.00	8,800.00	335.88	-97.00	336.88	1.50	-1.50	0.00	
A03-EON(112H)										
8,900.00	0.00	0.00	8,891.49	335.88	-97.00	336.88	0.00	0.00	0.00	
9,000.00	0.00	0.00	8,991.49	335.88	-97.00	336.88	0.00	0.00	0.00	
9,100.00	0.00	0.00	9,091.49	335.88	-97.00	336.88	0.00	0.00	0.00	
9,200.00	0.00	0.00	9,191.49	335.88	-97.00	336.88	0.00	0.00	0.00	
9,300.00	0.00	0.00	9,291.49	335.88	-97.00	336.88	0.00	0.00	0.00	
9,400.00	0.00	0.00	9,391.49	335.88	-97.00	336.88	0.00	0.00	0.00	
9,500.00	0.00	0.00	9,491.49	335.88	-97.00	336.88	0.00	0.00	0.00	
9,600.00	0.00	0.00	9,591.49	335.88	-97.00	336.88	0.00	0.00	0.00	
9,700.00	0.00	0.00	9,691.49	335.88	-97.00	336.88	0.00	0.00	0.00	
9,800.00	0.00	0.00	9,791.49	335.88	-97.00	336.88	0.00	0.00	0.00	
9,900.00	0.00	0.00	9,891.49	335.88	-97.00	336.88	0.00	0.00	0.00	
9,976.51	0.00	0.00	9,968.00	335.88	-97.00	336.88	0.00	0.00	0.00	



Planning Report

Database:	EDM 5000.14 Single User Db	Local Co-ordinate Reference:	Well Lonesome Dove Fed Com #112H - Slot A02
Company:	Titus Oil & Gas Production, LLC	TVD Reference:	3217+25 @ 3242.00usft
Project:	Lea County, NM (NAD83-NME)	MD Reference:	3217+25 @ 3242.00usft
Site:	A03_Lonesome Dove	North Reference:	Grid
Well:	Lonesome Dove Fed Com #112H	Survey Calculation Method:	Minimum Curvature
Wellbore:	#112H		
Design:	Plan #1		

Planned Survey									
Measured Depth (usft)	Inclination (°)	Azimuth (°)	Vertical Depth (usft)	+N/-S (usft)	+E/-W (usft)	Vertical Section (usft)	Dogleg Rate (°/100usft)	Build Rate (°/100usft)	Turn Rate (°/100usft)
KOP: 9976.51' MD, 336.88 VS, 9968.00' TVD									
10,000.00	2.35	343.85	9,991.48	336.34	-97.13	337.34	10.00	10.00	0.00
10,050.00	7.35	343.85	10,041.29	340.40	-98.31	341.41	10.00	10.00	0.00
10,100.00	12.35	343.85	10,090.53	348.61	-100.69	349.65	10.00	10.00	0.00
10,110.79	13.43	343.85	10,101.05	350.92	-101.36	351.96	10.00	10.00	0.00
LD332H-LD112H-SF1.5+10									
10,150.00	17.35	343.85	10,138.85	360.91	-104.25	361.99	10.00	10.00	0.00
10,200.00	22.35	343.85	10,185.86	377.22	-108.97	378.34	10.00	10.00	0.00
10,250.00	27.35	343.85	10,231.22	397.39	-114.81	398.57	10.00	10.00	0.00
10,300.00	32.35	343.85	10,274.57	421.29	-121.73	422.54	10.00	10.00	0.00
10,350.00	37.35	343.85	10,315.59	448.72	-129.68	450.06	10.00	10.00	0.00
10,400.00	42.35	343.85	10,353.97	479.49	-138.59	480.91	10.00	10.00	0.00
10,450.00	47.35	343.85	10,389.41	513.35	-148.39	514.87	10.00	10.00	0.00
10,500.00	52.35	343.85	10,421.64	550.04	-159.02	551.68	10.00	10.00	0.00
10,550.00	57.35	343.85	10,450.41	589.30	-170.39	591.05	10.00	10.00	0.00
10,600.00	62.35	343.85	10,475.52	630.82	-182.41	632.69	10.00	10.00	0.00
10,650.00	67.35	343.85	10,496.76	674.28	-194.99	676.28	10.00	10.00	0.00
10,700.00	72.35	343.85	10,513.98	719.35	-208.05	721.49	10.00	10.00	0.00
10,750.00	77.35	343.85	10,527.05	765.69	-221.47	767.97	10.00	10.00	0.00
10,800.00	82.35	343.85	10,535.86	812.95	-235.15	815.37	10.00	10.00	0.00
10,850.00	87.35	343.85	10,540.34	860.77	-249.00	863.33	10.00	10.00	0.00
10,883.51	90.70	343.85	10,540.92	892.95	-258.32	895.60	10.00	10.00	0.00
EOC: 10883.51' MD, 895.60 VS, 10540.92' TVD									
10,900.00	90.70	343.85	10,540.71	908.78	-262.90	911.49	0.00	0.00	0.00
10,930.28	90.70	343.85	10,540.34	937.87	-271.32	940.66	0.00	0.00	0.00
A03-FTP*(112H)									
10,943.63	90.70	343.85	10,540.18	950.69	-275.04	953.52	0.00	0.00	0.00
A03-FTP(112H)									
11,000.00	90.70	343.85	10,539.49	1,004.83	-290.72	1,007.82	0.00	0.00	0.00
11,100.00	90.70	343.85	10,538.27	1,100.88	-318.53	1,104.15	0.00	0.00	0.00
11,133.51	90.70	343.85	10,537.86	1,133.06	-327.85	1,136.44	0.00	0.00	0.00
11,200.00	90.70	346.51	10,537.05	1,197.33	-344.85	1,200.88	4.00	0.01	4.00
11,300.00	90.71	350.51	10,535.82	1,295.30	-364.77	1,299.05	4.00	0.00	4.00
11,400.00	90.70	354.51	10,534.58	1,394.42	-377.80	1,398.30	4.00	0.00	4.00
11,500.00	90.70	358.51	10,533.36	1,494.21	-383.88	1,498.14	4.00	0.00	4.00
11,522.12	90.70	359.40	10,533.09	1,516.32	-384.29	1,520.26	4.00	-0.01	4.00
11,600.00	90.70	359.40	10,532.14	1,594.19	-385.11	1,598.13	0.00	0.00	0.00
11,700.00	90.70	359.40	10,530.92	1,694.18	-386.17	1,698.13	0.00	0.00	0.00
11,800.00	90.70	359.40	10,529.70	1,794.16	-387.22	1,798.12	0.00	0.00	0.00
11,900.00	90.70	359.40	10,528.48	1,894.15	-388.28	1,898.11	0.00	0.00	0.00
12,000.00	90.70	359.40	10,527.26	1,994.14	-389.33	1,998.10	0.00	0.00	0.00
12,100.00	90.70	359.40	10,526.04	2,094.12	-390.39	2,098.10	0.00	0.00	0.00
12,200.00	90.70	359.40	10,524.82	2,194.11	-391.44	2,198.09	0.00	0.00	0.00
12,300.00	90.70	359.40	10,523.60	2,294.10	-392.50	2,298.08	0.00	0.00	0.00
12,400.00	90.70	359.40	10,522.38	2,394.09	-393.55	2,398.08	0.00	0.00	0.00
12,500.00	90.70	359.40	10,521.16	2,494.07	-394.61	2,498.07	0.00	0.00	0.00
12,600.00	90.70	359.40	10,519.94	2,594.06	-395.66	2,598.06	0.00	0.00	0.00
12,700.00	90.70	359.40	10,518.72	2,694.05	-396.72	2,698.05	0.00	0.00	0.00
12,800.00	90.70	359.40	10,517.50	2,794.03	-397.77	2,798.05	0.00	0.00	0.00
12,900.00	90.70	359.40	10,516.28	2,894.02	-398.83	2,898.04	0.00	0.00	0.00
13,000.00	90.70	359.40	10,515.06	2,994.01	-399.88	2,998.03	0.00	0.00	0.00
13,100.00	90.70	359.40	10,513.84	3,093.99	-400.94	3,098.02	0.00	0.00	0.00



Planning Report

Database:	EDM 5000.14 Single User Db	Local Co-ordinate Reference:	Well Lonesome Dove Fed Com #112H - Slot A02
Company:	Titus Oil & Gas Production, LLC	TVD Reference:	3217+25 @ 3242.00usft
Project:	Lea County, NM (NAD83-NME)	MD Reference:	3217+25 @ 3242.00usft
Site:	A03_Lonesome Dove	North Reference:	Grid
Well:	Lonesome Dove Fed Com #112H	Survey Calculation Method:	Minimum Curvature
Wellbore:	#112H		
Design:	Plan #1		

Planned Survey									
Measured Depth (usft)	Inclination (°)	Azimuth (°)	Vertical Depth (usft)	+N/-S (usft)	+E/-W (usft)	Vertical Section (usft)	Dogleg Rate (°/100usft)	Build Rate (°/100usft)	Turn Rate (°/100usft)
13,200.00	90.70	359.40	10,512.62	3,193.98	-401.99	3,198.02	0.00	0.00	0.00
13,300.00	90.70	359.40	10,511.40	3,293.97	-403.05	3,298.01	0.00	0.00	0.00
13,400.00	90.70	359.40	10,510.18	3,393.96	-404.10	3,398.00	0.00	0.00	0.00
13,500.00	90.70	359.40	10,508.96	3,493.94	-405.16	3,497.99	0.00	0.00	0.00
13,600.00	90.70	359.40	10,507.74	3,593.93	-406.21	3,597.99	0.00	0.00	0.00
13,700.00	90.70	359.40	10,506.52	3,693.92	-407.27	3,697.98	0.00	0.00	0.00
13,800.00	90.70	359.40	10,505.30	3,793.90	-408.32	3,797.97	0.00	0.00	0.00
13,900.00	90.70	359.40	10,504.08	3,893.89	-409.38	3,897.96	0.00	0.00	0.00
14,000.00	90.70	359.40	10,502.86	3,993.88	-410.43	3,997.96	0.00	0.00	0.00
14,100.00	90.70	359.40	10,501.63	4,093.86	-411.49	4,097.95	0.00	0.00	0.00
14,200.00	90.70	359.40	10,500.41	4,193.85	-412.54	4,197.94	0.00	0.00	0.00
14,300.00	90.70	359.40	10,499.19	4,293.84	-413.60	4,297.93	0.00	0.00	0.00
14,400.00	90.70	359.40	10,497.97	4,393.83	-414.65	4,397.93	0.00	0.00	0.00
14,500.00	90.70	359.40	10,496.75	4,493.81	-415.71	4,497.92	0.00	0.00	0.00
14,600.00	90.70	359.40	10,495.53	4,593.80	-416.76	4,597.91	0.00	0.00	0.00
14,700.00	90.70	359.40	10,494.31	4,693.79	-417.82	4,697.90	0.00	0.00	0.00
14,800.00	90.70	359.40	10,493.09	4,793.77	-418.87	4,797.90	0.00	0.00	0.00
14,900.00	90.70	359.40	10,491.87	4,893.76	-419.93	4,897.89	0.00	0.00	0.00
15,000.00	90.70	359.40	10,490.65	4,993.75	-420.98	4,997.88	0.00	0.00	0.00
15,100.00	90.70	359.40	10,489.43	5,093.73	-422.04	5,097.87	0.00	0.00	0.00
15,200.00	90.70	359.40	10,488.21	5,193.72	-423.09	5,197.87	0.00	0.00	0.00
15,300.00	90.70	359.40	10,486.99	5,293.71	-424.15	5,297.86	0.00	0.00	0.00
15,400.00	90.70	359.40	10,485.77	5,393.70	-425.20	5,397.85	0.00	0.00	0.00
15,500.00	90.70	359.40	10,484.55	5,493.68	-426.26	5,497.84	0.00	0.00	0.00
15,600.00	90.70	359.40	10,483.33	5,593.67	-427.31	5,597.84	0.00	0.00	0.00
15,700.00	90.70	359.40	10,482.11	5,693.66	-428.37	5,697.83	0.00	0.00	0.00
15,800.00	90.70	359.40	10,480.89	5,793.64	-429.42	5,797.82	0.00	0.00	0.00
15,900.00	90.70	359.40	10,479.67	5,893.63	-430.48	5,897.81	0.00	0.00	0.00
16,000.00	90.70	359.40	10,478.45	5,993.62	-431.53	5,997.81	0.00	0.00	0.00
16,100.00	90.70	359.40	10,477.23	6,093.60	-432.59	6,097.80	0.00	0.00	0.00
16,200.00	90.70	359.40	10,476.01	6,193.59	-433.64	6,197.79	0.00	0.00	0.00
16,300.00	90.70	359.40	10,474.79	6,293.58	-434.70	6,297.78	0.00	0.00	0.00
16,400.00	90.70	359.40	10,473.57	6,393.56	-435.75	6,397.78	0.00	0.00	0.00
16,500.00	90.70	359.40	10,472.35	6,493.55	-436.81	6,497.77	0.00	0.00	0.00
16,600.00	90.70	359.40	10,471.13	6,593.54	-437.86	6,597.76	0.00	0.00	0.00
16,700.00	90.70	359.40	10,469.91	6,693.53	-438.92	6,697.76	0.00	0.00	0.00
16,800.00	90.70	359.40	10,468.69	6,793.51	-439.97	6,797.75	0.00	0.00	0.00
16,900.00	90.70	359.40	10,467.47	6,893.50	-441.03	6,897.74	0.00	0.00	0.00
17,000.00	90.70	359.40	10,466.25	6,993.49	-442.08	6,997.73	0.00	0.00	0.00
17,100.00	90.70	359.40	10,465.03	7,093.47	-443.14	7,097.73	0.00	0.00	0.00
17,200.00	90.70	359.40	10,463.81	7,193.46	-444.19	7,197.72	0.00	0.00	0.00
17,300.00	90.70	359.40	10,462.59	7,293.45	-445.25	7,297.71	0.00	0.00	0.00
17,400.00	90.70	359.40	10,461.37	7,393.43	-446.30	7,397.70	0.00	0.00	0.00
17,500.00	90.70	359.40	10,460.15	7,493.42	-447.36	7,497.70	0.00	0.00	0.00
17,600.00	90.70	359.40	10,458.93	7,593.41	-448.41	7,597.69	0.00	0.00	0.00
17,700.00	90.70	359.40	10,457.71	7,693.40	-449.47	7,697.68	0.00	0.00	0.00
17,800.00	90.70	359.40	10,456.49	7,793.38	-450.52	7,797.67	0.00	0.00	0.00
17,900.00	90.70	359.40	10,455.27	7,893.37	-451.58	7,897.67	0.00	0.00	0.00
18,000.00	90.70	359.40	10,454.05	7,993.36	-452.63	7,997.66	0.00	0.00	0.00
18,100.00	90.70	359.40	10,452.83	8,093.34	-453.69	8,097.65	0.00	0.00	0.00
18,200.00	90.70	359.40	10,451.61	8,193.33	-454.74	8,197.64	0.00	0.00	0.00
18,300.00	90.70	359.40	10,450.39	8,293.32	-455.80	8,297.64	0.00	0.00	0.00
18,400.00	90.70	359.40	10,449.17	8,393.30	-456.85	8,397.63	0.00	0.00	0.00



Planning Report

Database:	EDM 5000.14 Single User Db	Local Co-ordinate Reference:	Well Lonesome Dove Fed Com #112H - Slot A02
Company:	Titus Oil & Gas Production, LLC	TVD Reference:	3217+25 @ 3242.00usft
Project:	Lea County, NM (NAD83-NME)	MD Reference:	3217+25 @ 3242.00usft
Site:	A03_Lonesome Dove	North Reference:	Grid
Well:	Lonesome Dove Fed Com #112H	Survey Calculation Method:	Minimum Curvature
Wellbore:	#112H		
Design:	Plan #1		

Planned Survey									
Measured Depth (usft)	Inclination (°)	Azimuth (°)	Vertical Depth (usft)	+N/-S (usft)	+E/-W (usft)	Vertical Section (usft)	Dogleg Rate (°/100usft)	Build Rate (°/100usft)	Turn Rate (°/100usft)
18,500.00	90.70	359.40	10,447.95	8,493.29	-457.91	8,497.62	0.00	0.00	0.00
18,600.00	90.70	359.40	10,446.73	8,593.28	-458.96	8,597.61	0.00	0.00	0.00
18,651.88	90.70	359.40	10,446.10	8,645.15	-459.51	8,649.49	0.00	0.00	0.00
A03-LTP(112H)									
18,700.00	90.70	359.40	10,445.51	8,693.27	-460.02	8,697.61	0.00	0.00	0.00
18,741.87	90.70	359.40	10,445.00	8,735.13	-460.46	8,739.47	0.00	0.00	0.00
TD: 18741.87' MD, 8739.47 VS, 10445.00' TVD - A03-PBHL(112H)									

Design Targets									
Target Name - hit/miss target - Shape	Dip Angle (°)	Dip Dir. (°)	TVD (usft)	+N/-S (usft)	+E/-W (usft)	Northing (usft)	Easting (usft)	Latitude	Longitude
A03-TW(Lat1) - plan misses target center by 8747.26usft at 1.00usft MD (1.00 TVD, 0.00 N, 0.00 E) - Rectangle (sides W100.00 H7,815.00 D0.00)	0.00	0.00	1.00	8,735.13	-460.46	388,676.76	832,724.50	32.06506131	-103.39269282
A03-EON(112H) - plan misses target center by 142.96usft at 8808.51usft MD (8800.00 TVD, 335.88 N, -97.00 E) - Point	0.00	0.00	8,800.00	335.88	-239.96	380,277.51	832,945.00	32.04196977	-103.39221745
LD332H-LD112H-SF1.5 - plan misses target center by 78.31usft at 10110.57usft MD (10100.84 TVD, 350.87 N, -101.34 E) - Circle (radius 118.03)	0.00	0.00	10,099.39	335.24	-178.06	380,276.87	833,006.90	32.04196653	-103.39201772
A03-LTP(112H) - plan misses target center by 1.10usft at 18651.88usft MD (10446.10 TVD, 8645.15 N, -459.51 E) - Point	0.00	0.00	10,445.00	8,645.14	-459.52	388,586.77	832,725.44	32.06481394	-103.39269232
A03-PBHL(112H) - plan hits target center - Point	0.00	0.00	10,445.00	8,735.13	-460.46	388,676.76	832,724.50	32.06506131	-103.39269282
A03-FTP(112H) - plan misses target center by 108.46usft at 10943.63usft MD (10540.18 TVD, 950.69 N, -275.04 E) - Point	0.00	0.00	10,541.00	920.53	-379.22	380,862.16	832,805.74	32.04358009	-103.39265040
A03-FTP*(112H) - plan misses target center by 62.36usft at 10930.28usft MD (10540.34 TVD, 937.87 N, -271.32 E) - Point	0.00	0.00	10,541.00	920.53	-331.22	380,862.16	832,853.74	32.04357894	-103.39249551

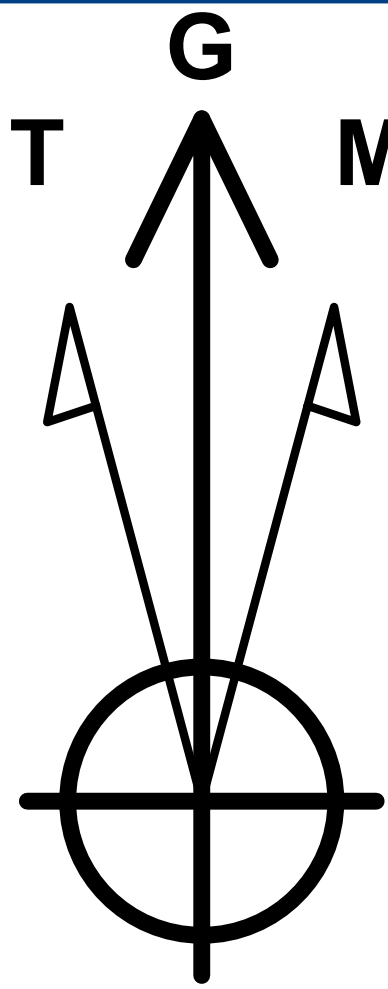
Plan Annotations				
Measured Depth (usft)	Vertical Depth (usft)	Local Coordinates		Comment
		+N/-S (usft)	+E/-W (usft)	
9,976.51	9,968.00	335.88	-97.00	KOP: 9976.51' MD, 336.88 VS, 9968.00' TVD
10,883.51	10,540.92	892.95	-258.32	EOC: 10883.51' MD, 895.60 VS, 10540.92' TVD
18,741.87	10,445.00	8,735.13	-460.46	TD: 18741.87' MD, 8739.47 VS, 10445.00' TVD



Titus Oil & Gas Production, LLC
Site: A03_Lonesome Dove
Well: Lonesome Dove Fed Com #112H
Wellbore: #112H
Plan: Plan #1

WELL DETAILS: Lonesome Dove Fed Com #112H

Northing	Easting	Latitude	Longitude	Slot
379941.63	833184.96	32.04104081	-103.39145256	A02



Azimuths to Grid North
True North: -0.50°
Magnetic North: 6.11°

Magnetic Field
Strength: 47553.1snT
Dip Angle: 59.81°
Date: 1/14/2020
Model: IGRF2020

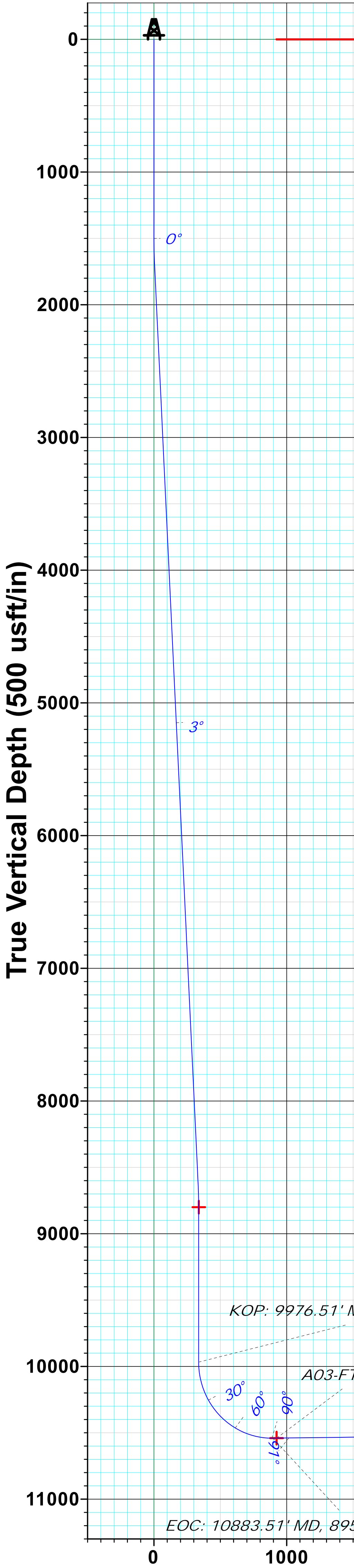
PROJECT DETAILS: Lea County, NM (NAD83-NME)
Well Name: Lonesome Dove Fed Com #112H
Geodetic System: US State Plane 1983
Datum: North American Datum 1983
Ellipsoid: GRS 1980
Zone: New Mexico Eastern Zone
System Datum: Mean Sea Level
Local North: Grid
KB Elevation: 3217+25 @ 3242.00usft
Elevation: 3217.00

Section Details

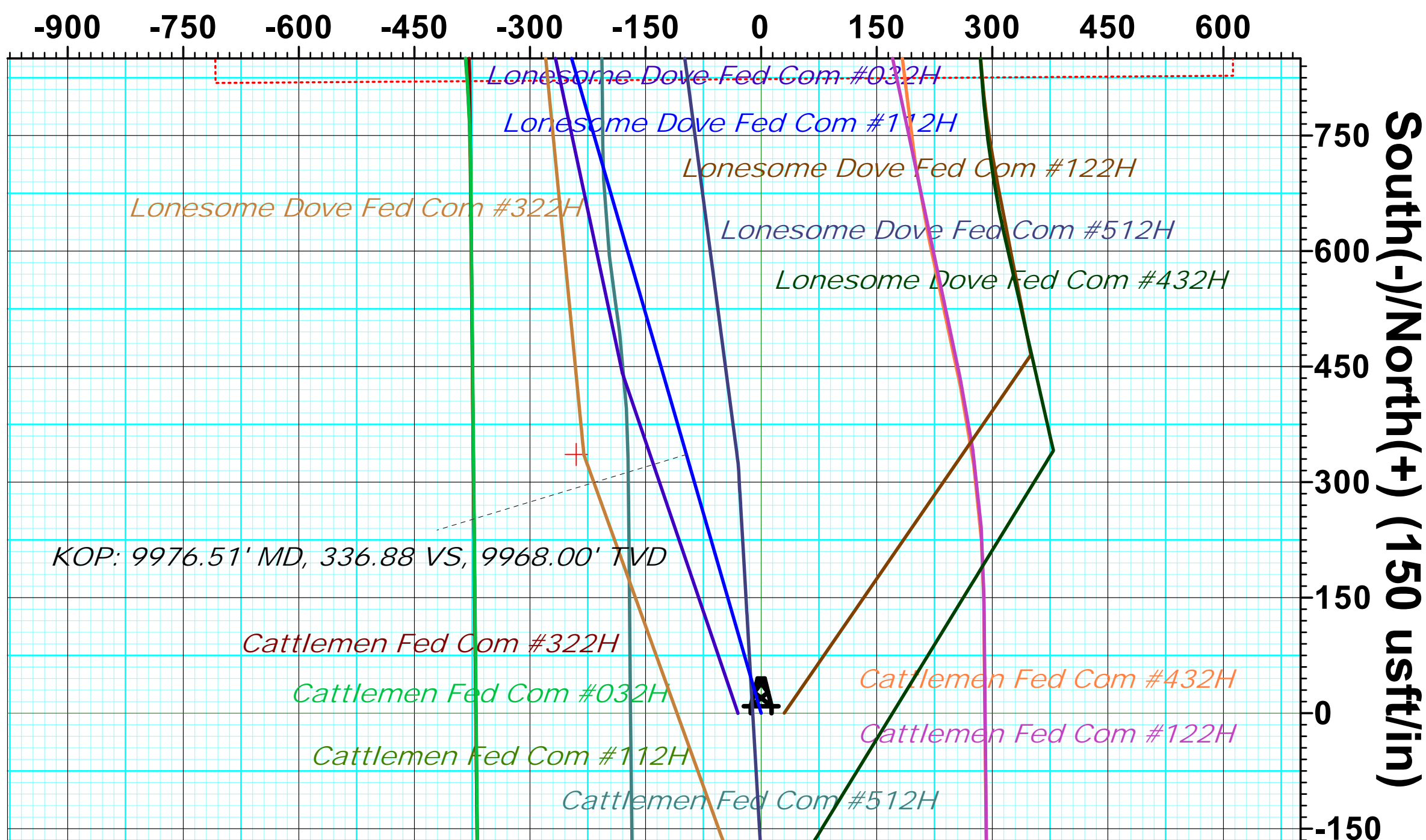
Sec	MD	Inc	Azi	TVD	+N/-S	+E/-W	Dleg	TFace	VSect
1	0.00	0.00	0.00	0.00	0.00	0.00	0.00	0.00	0.00
2	1500.00	0.00	0.00	1500.00	0.00	0.00	0.00	0.00	0.00
3	1687.61	2.81	343.89	1687.53	4.43	-1.28	1.50	343.89	4.44
4	8620.91	2.81	343.89	8612.47	331.45	-95.72	0.00	0.00	332.44
5	8808.51	0.00	0.00	8800.00	335.88	-97.00	1.50	180.00	336.88
6	9976.51	0.00	0.00	9968.00	335.88	-97.00	0.00	0.00	336.88
7	10883.51	90.70	343.85	10540.92	892.95	-258.32	10.00	343.85	895.60
8	11133.51	90.70	343.85	10537.86	1133.06	-327.85	0.00	0.00	1136.44
9	11522.12	90.70	359.40	10533.09	1516.32	-384.29	4.00	89.91	1520.26
10	18741.87	90.70	359.40	10445.00	8735.13	-460.46	0.00	0.00	8739.47

DESIGN TARGET DETAILS

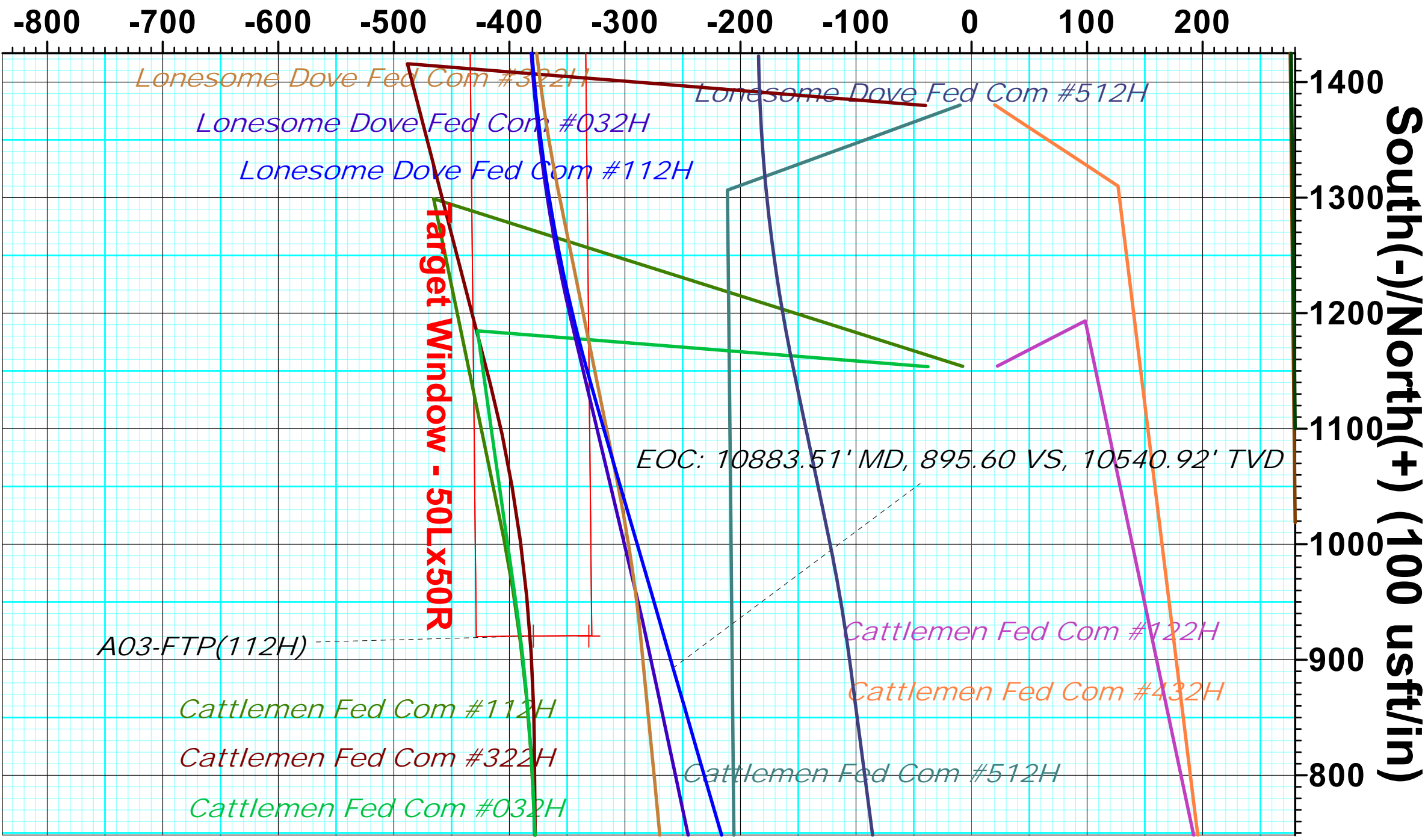
Name	TVD	+N/-S	+E/-W	Northing	Easting	Latitude	Longitude
A03-EON(112H)	8800.00	335.88	-239.96	380277.51	832945.00	32.04196976	-103.39221745
A03-FTP(112H)	10541.00	920.53	-379.22	380862.16	832805.74	32.04358008	-103.39265040
A03-FTP*(112H)	10541.00	920.53	-331.22	380862.16	832853.74	32.04357893	-103.39249551
A03-LTP(112H)	10445.00	8645.14	-459.52	388586.77	832725.44	32.06481394	-103.39269232
A03-PBHL(112H)	10445.00	8735.13	-460.46	388676.76	832724.50	32.06506131	-103.39269282
A03-TW(Lat1)	1.00	8735.13	-460.46	388676.76	832724.50	32.06506131	-103.39269282



West(-)/East(+) (150 usft/in)



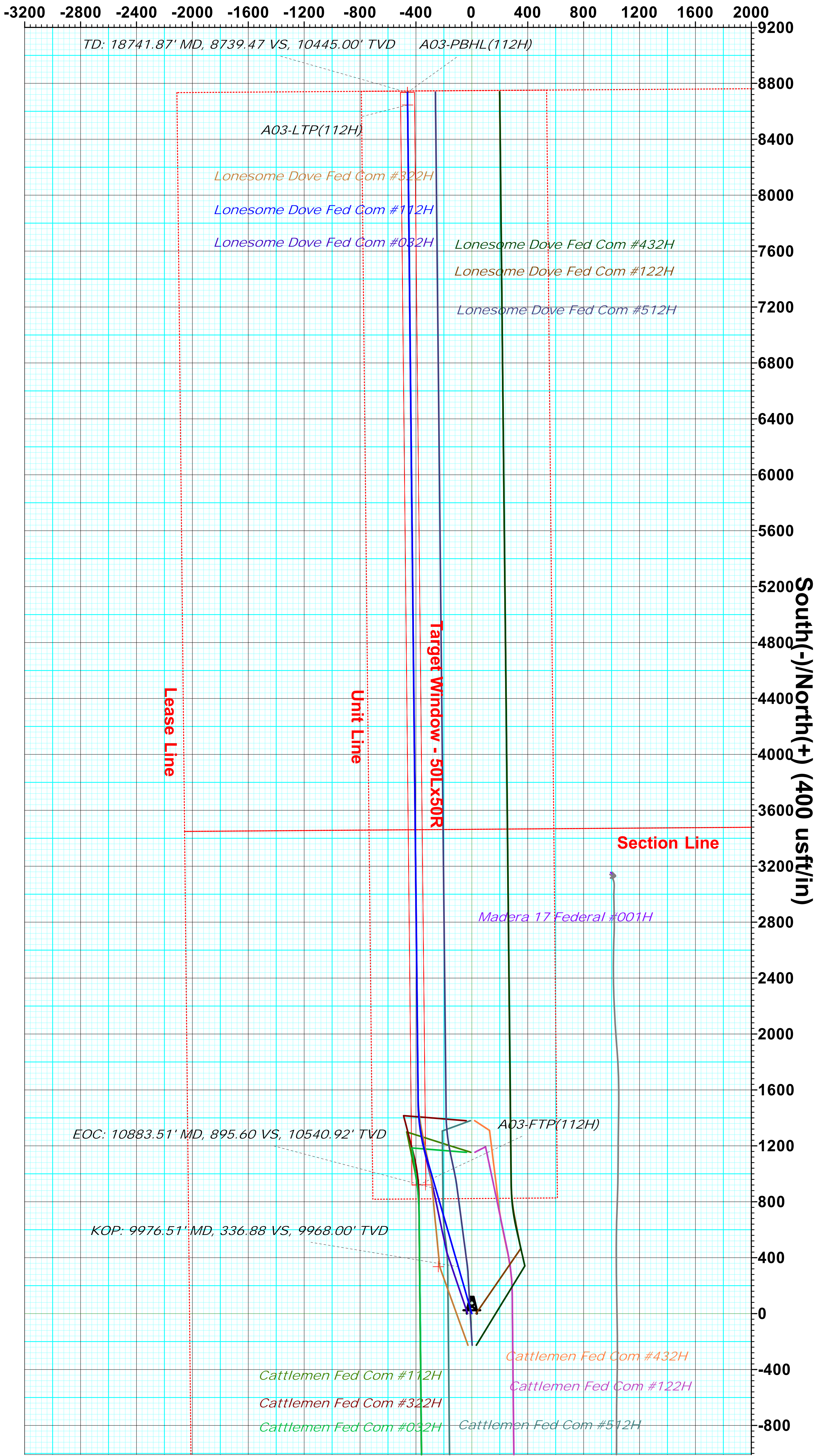
West(-)/East(+) (100 usft/in)



Vertical Section at 359.40° (500 usft/in)



West(-)/East(+) (400 usft/in)



Titus Oil & Gas Production, LLC - Lonesome Dove Fed Com 112H

1. Geologic Formations

TVD of target	10,445' EOL	Pilot hole depth	NA
MD at TD:	18,741'	Deepest expected fresh water:	250'

Formation	Depth (TVD) from KB	Water/Mineral Bearing/ Target Zone?	Hazards*
Quaternary Fill	Surface	Water	
Rustler	1035	Water	
Top of Salt	1518	Salt	
Base of Salt	5009	Salt	
Lamar	5349	Salt Water	
Bell Canyon	5391	Oil/Gas	
Cherry Canyon	6426	Oil/Gas	
Brushy Canyon	7768	Oil/Gas	
Bone Spring Lime	9277	Oil/Gas	
Leonard	9336	Oil/Gas	
1st Bone Spring Sand	10475	Target Oil/Gas	
2nd Bone Spring Sand	11024	Not Penetrated	
3rd Bone Spring Sand	12149	Not Penetrated	
Wolfcamp	12533	Not Penetrated	
X	X	Not Penetrated	

2. Casing Program

Hole Size	Casing Interval		Csg. Size	Weight (lbs)	Grade	Conn.	SF Collapse	SF Burst	SF Tension
	From	To							
17.5"	0	1060	13.375"	54.5	J55	STC	2.33	1.18	8.90
12.25"	0	5375	9.625"	40	J55	LTC	1.13	0.97	2.42
8.75"	0	18,741	5.5"	17	P110	LTC	1.47	2.62	2.51
BLM Minimum Safety Factor							1.125	1	1.6 Dry 1.8 Wet

Intermediate casing will be kept at least 1/3 full while running casing to mitigate collapse. Intermediate burst based on 0.7 frac gradient at the shoe with Gas Gradient 0.1 psi/ft to surface.

All casing strings will be tested in accordance with Onshore Oil and Gas Order #2 III.B.1.h

Titus Oil & Gas Production, LLC - Lonesome Dove Fed Com 112H

	Y or N
Is casing new? If used, attach certification as required in Onshore Order #1	Y
Does casing meet API specifications? If no, attach casing specification sheet.	Y
Is premium or uncommon casing planned? If yes attach casing specification sheet.	N
Does the above casing design meet or exceed BLM's minimum standards? If not provide justification (loading assumptions, casing design criteria).	Y
Will the intermediate pipe be kept at a minimum 1/3 fluid filled to avoid approaching the collapse pressure rating of the casing?	Y
Is well located within Capitan Reef?	N
If yes, does production casing cement tie back a minimum of 50' above the Reef?	
Is well within the designated 4 string boundary?	
Is well located in SOPA but not in R-111-P?	N
If yes, are the first 2 strings cemented to surface and 3 rd string cement tied back 500' into previous casing?	
Is well located in R-111-P and SOPA?	N
If yes, are the first three strings cemented to surface?	
Is 2 nd string set 100' to 600' below the base of salt?	
Is well located in high Cave/Karst?	N
If yes, are there two strings cemented to surface?	
(For 2 string wells) If yes, is there a contingency casing if lost circulation occurs?	
Is well located in critical Cave/Karst?	N
If yes, are there three strings cemented to surface?	

Titus Oil & Gas Production, LLC - Lonesome Dove Fed Com 112H

3. Cementing Program

Casing	# Sk	Wt. lb/ gal	Yld ft3/ sack	H ₂ O gal/sk	500# Comp. Strength (hours)	Slurry Description
Surf.	440	13.5	1.75	9	12	Lead: Class C + 4% Gel + 1% CaCl ₂
	250	14.8	1.34	6.34	8	Tail: Class C + 2% CaCl ₂
Inter.	1040	12.7	2.0	9.6	16	Lead: 35:65:6 C Blend
	250	14.8	1.34	6.34	8	Tail: Class C + 2% CaCl
5.5 Prod	710	11.9	2.5	19	72	Lead: 50:50:10 H Blend
	2240	14.4	1.24	5.7	19	Tail: 50:50:2 Class H Blend

Volumes Subject to Observed Hole Conditions and/or Fluid Caliper Results

Lab reports with the 500 psi compressive strength time for the cement will be onsite for review.

Casing String	TOC	% Excess
Surface	0'	50%
1 st Intermediate	0'	50%
Production	4,875'	25% OH in Lateral (KOP to EOL) – 40% OH in Vertical

Titus Oil & Gas Production, LLC - Lonesome Dove Fed Com 112H

4. Pressure Control Equipment

N	A variance is requested for the use of a diverter on the surface casing. See attached for schematic.
---	---

BOP installed and tested before drilling which hole?	Size?	Min. Required WP	Type	x	Tested to:
12-1/4"	13-5/8"	2M	Annular	x	2000 psi
			Blind Ram		2M
			Pipe Ram		
			Double Ram		
			Other*		
8-3/4"	13-5/8"	3M	Annular	x	50% testing pressure
			Blind Ram	x	3M
			Pipe Ram	x	
			Double Ram		
			Other*		

BOP/BOPE will be tested by an independent service company to 250 psi low and the high pressure indicated above per Onshore Order 2 requirements. The System may be upgraded to a higher pressure but still tested to the working pressure listed in the table above. If the system is upgraded all the components installed will be functional and tested.

Pipe rams will be operationally checked each 24 hour period. Blind rams will be operationally checked on each trip out of the hole. These checks will be noted on the daily tour sheets. Other accessories to the BOP equipment will include a Kelly cock and floor safety valve (inside BOP) and choke lines and choke manifold. See attached schematics.

X	Formation integrity test will be performed per Onshore Order #2. On Exploratory wells or on that portion of any well approved for a 5M BOPE system or greater, a pressure integrity test of each casing shoe shall be performed. Will be tested in accordance with Onshore Oil and Gas Order #2 III.B.1.i.
Y	A variance is requested for the use of a flexible choke line from the BOP to Choke Manifold. See attached for specs and hydrostatic test chart.
N	Are anchors required by manufacturer?
N	A multibowl wellhead is being used. The BOP will be tested per Onshore Order #2 after installation on the surface casing which will cover testing requirements for a maximum of 30 days. If any seal subject to test pressure is broken the system must be tested.

Titus Oil & Gas Production, LLC - Lonesome Dove Fed Com 112H

5. Mud Program

Depth		Type	Weight (ppg)	Viscosity	Water Loss
From	To				
0	Surf. Shoe	FW Gel	8.6 - 8.8	28-34	N/C
Surf csg	9-5/8" Int shoe	Saturated Brine	10 - 10.2	28-34	N/C
9-5/8" Int shoe	Lateral TD	Cut Brine	8.6 - 9.4	28-34	N/C

Sufficient mud materials to maintain mud properties and meet minimum lost circulation and weight increase requirements will be kept on location at all times.

What will be used to monitor the loss or gain of fluid?	PVT/Pason/Visual Monitoring
---	-----------------------------

6. Logging and Testing Procedures

Logging, Coring and Testing.	
Y	Will run GR/CNL from TD to surface (horizontal well – vertical portion of hole). Stated logs run will be in the Completion Report and submitted to the BLM.
Y	No Logs are planned based on well control or offset log information.
N	Drill stem test? If yes, explain.
N	Coring? If yes, explain.

Additional logs planned		Interval
N	Resistivity	Pilot Hole TD to ICP
N	Density	Pilot Hole TD to ICP
Y	CBL	Production casing (If cement not circulated to surface)
Y	Mud log	Intermediate shoe to TD
N	PEX	

Titus Oil & Gas Production, LLC - Lonesome Dove Fed Com 112H

7. Drilling Conditions

Condition	Specify what type and where?
BH Pressure at deepest TVD	5110 psi at 10445' TVD
Abnormal Temperature	NO 160 Deg. F.

No abnormal pressure or temperature conditions are anticipated. Sufficient mud materials to maintain mud properties and weight increase requirements will be kept on location at all times.

Sufficient supplies of Paper/LCM for periodic sweeps to control seepage and losses will be maintained on location.

Hydrogen Sulfide (H₂S) monitors will be installed prior to drilling out the surface shoe. If H₂S is detected in concentrations greater than 100 ppm, the operator will comply with the provisions of Onshore Oil and Gas Order #6. If Hydrogen Sulfide is encountered, measured values and formations will be provided to the BLM.

N H₂S is present

Y H₂S Plan attached

8. Other Facets of Operation

Y	Is it a walking operation?
N	Is casing pre-set?

x	H ₂ S Plan.
x	BOP & Choke Schematics.
x	Directional Plan

District I
1625 N. French Dr., Hobbs, NM 88240
Phone: (575) 393-6161 Fax: (575) 393-0720
District II
811 S. First St., Artesia, NM 88210
Phone: (575) 748-1283 Fax: (575) 748-9720
District III
1000 Rio Brazos Road, Aztec, NM 87410
Phone: (505) 334-6178 Fax: (505) 334-6170
District IV
1220 S. St. Francis Dr., Santa Fe, NM 87505
Phone: (505) 476-3460 Fax: (505) 476-3462

State of New Mexico
Energy, Minerals & Natural Resources Department
OIL CONSERVATION DIVISION
1220 South St. Francis Dr.
Santa Fe, NM 87505

OCD - HOBBS
12/02/2020
RECEIVED

Form C-102
Revised August 1, 2011
Submit one copy to appropriate
District Office

☐ AMENDED REPORT

WELL LOCATION AND ACREAGE DEDICATION PLAT

1 API Number 30-025-48148		2 Pool Code 96672		3 Pool Name WC-025 G-08 S263412K; Bone Spring	
4 Property Code 329881		5 Property Name LONESOME DOVE FED COM			6 Well Number 112H
7 OGRID No. 373986		8 Operator Name TITUS OIL & GAS PRODUCTION LLC			9 Elevation 3217'

¹⁰ Surface Location

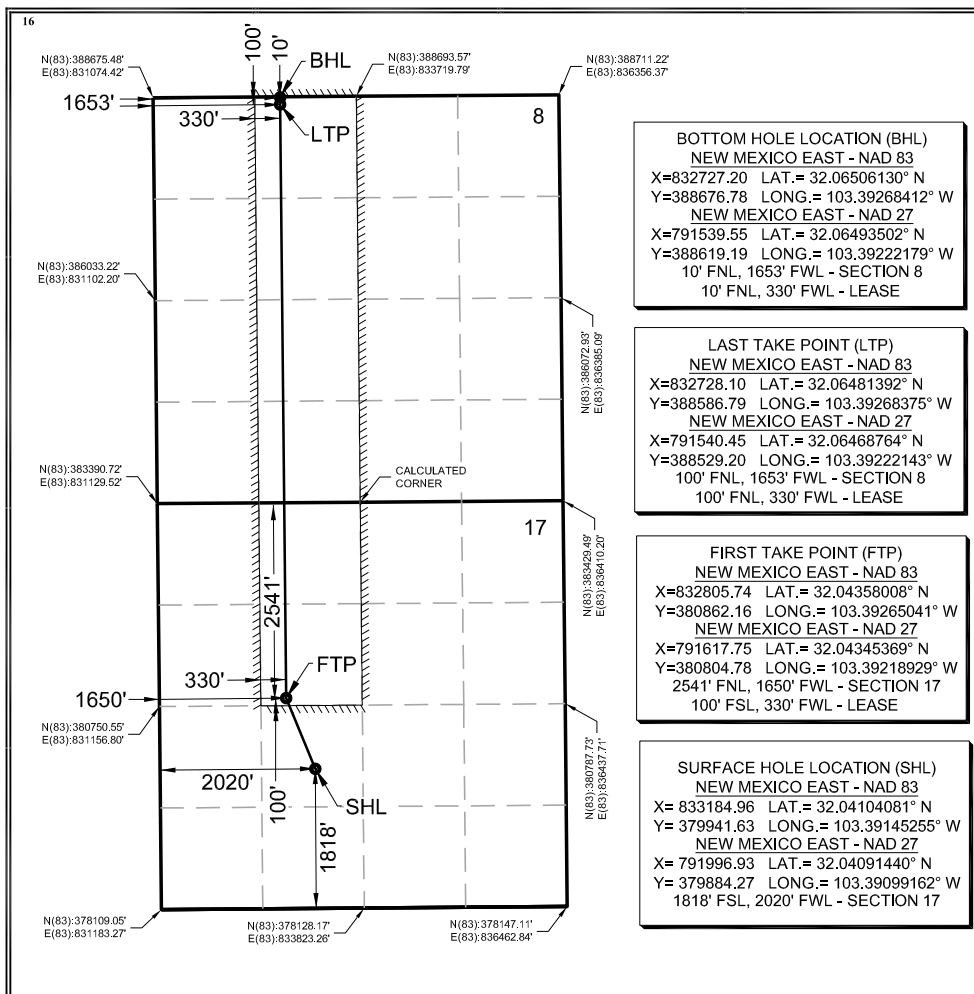
UL or lot no.	Section	Township	Range	Lot Idn	Feet from the	North/South line	Feet from the	East/West line	County
K	17	26-S	35-E		1818'	SOUTH	2020'	WEST	LEA

¹¹ Bottom Hole Location If Different From Surface

UL or lot no.	Section	Township	Range	Lot Idn	Feet from the	North/South line	Feet from the	East/West line	County
C	8	26-S	35-E		10'	NORTH	1653'	WEST	LEA

12 Dedicated Acres	13 Joint or Infill	14 Consolidation Code	15 Order No.
240	Y		

No allowable will be assigned to this completion until all interests have been consolidated or a non-standard unit has been approved by the division.



17 OPERATOR CERTIFICATION

I hereby certify that the information contained herein is true and complete to the best of my knowledge and belief, and that this organization either owns a working interest or unleased mineral interest in the land including the proposed bottom hole location or has a right to drill this well at this location pursuant to a contract with an owner of such a mineral or working interest, or to a voluntary pooling agreement or a compulsory pooling order heretofore entered by the division.

Signature: *Ryan DeLong* Date: 1/21/2020

Printed Name: **Ryan DeLong - Regulatory Manager**

E-mail Address: **rdelong@titusoil.com**

18 SURVEYOR CERTIFICATION

I hereby certify that the well location shown on this plat was plotted from field notes of actual surveys made by me or under my supervision, and that the same is true and correct to the best of my belief.

Date of Survey: *01/15/2020*
Signature and Seal of Professional Surveyor

GARRETT J. SMELKER
NEW MEXICO
25036
01/15/2020
PROFESSIONAL SURVEYOR

Certificate Number

Intent ☐ As Drilled ☐

API # 30-025-48148		
Operator Name:	Property Name:	Well Number

Kick Off Point (KOP)

UL	Section	Township	Range	Lot	Feet	From N/S	Feet	From E/W	County
Latitude					Longitude				NAD

First Take Point (FTP)

UL	Section	Township	Range	Lot	Feet	From N/S	Feet	From E/W	County
Latitude					Longitude				NAD

Last Take Point (LTP)

UL	Section	Township	Range	Lot	Feet	From N/S	Feet	From E/W	County
Latitude					Longitude				NAD

Is this well the defining well for the Horizontal Spacing Unit? ☐Is this well an infill well? ☐

If infill is yes please provide API if available, Operator Name and well number for Defining well for Horizontal Spacing Unit.

API #		
Operator Name:	Property Name:	Well Number

KZ 06/29/2018

District I
1625 N. French Dr., Hobbs, NM 88240
District II
811 S. First St., Artesia, NM 88210
District III
1000 Rio Brazos Road, Aztec, NM 87410
District IV
1220 S. St. Francis Dr., Santa Fe, NM 87505

State of New Mexico
Energy, Minerals and Natural Resources Department
Oil Conservation Division
1220 South St. Francis Dr.
Santa Fe, NM 87505

Submit Original
to Appropriate
District Office

OCD – HOBBS
12/02/2020
RECEIVED

GAS CAPTURE PLAN

Date: 1/20/2020

☒ Original Operator & OGRID No.: 373986
☐ Amended - Reason for Amendment: _____

This Gas Capture Plan outlines actions to be taken by the Operator to reduce well/production facility flaring/venting for new completion (new drill, recomple to new zone, re-frac) activity.

Note: Form C-129 must be submitted and approved prior to exceeding 60 days allowed by Rule (Subsection A of 19.15.18.12 NMAC).

Well(s)/Production Facility – El Campeon CTB 17S

The well(s) that will be located at the production facility are shown in the table below.

Well Name	API	Well Location (ULSTR)	Footages	Expected MCF/D	Flared or Vented	Comments
Love Shack Fed Com 321H		Sec 17, T26S, R35E	269' FSL & 644' FWL			El Campeon CTB 17S will be utilized
Love Shack Fed Com 431H		Sec 17, T26S, R35E	269' FSL & 704' FWL			El Campeon CTB 17S will be utilized
Love Shack Fed Com 511H		Sec 17, T26S, R35E	269' FSL & 674' FWL			El Campeon CTB 17S will be utilized
Lonesome Dove Fed Com 032H		Sec 17, T26S, R35E	1818' FSL & 1990' FWL			El Campeon CTB 17S will be utilized
Lonesome Dove Fed Com 112H	30-025-48148	Sec 17, T26S, R35E	1818' FSL & 2020' FWL			El Campeon CTB 17S will be utilized
Lonesome Dove Fed Com 122H		Sec 17, T26S, R35E	1818' FSL & 2050' FWL			El Campeon CTB 17S will be utilized
Lonesome Dove Fed Com 322H		Sec 17, T26S, R35E	1592' FSL & 1990' FWL			El Campeon CTB 17S will be utilized
Lonesome Dove Fed Com 432H		Sec 17, T26S, R35E	1592' FSL & 2050' FWL			El Campeon CTB 17S will be utilized
Lonesome Dove Fed Com 512H		Sec 17, T26S, R35E	1592' FSL & 2020' FWL			El Campeon CTB 17S will be utilized

Gathering System and Pipeline Notification

Well(s) will be connected to a production facility after flowback operations are complete, where a gas transporter system is in place. The gas produced from production facility is dedicated to Lucid and is connected to a Lucid low pressure gathering system located in Lea County, New Mexico. Titus provides (periodically) to Lucid a drilling, completion and estimated first production date for wells that are scheduled to be drilled in the foreseeable future. In addition, Titus and Lucid have periodic conference calls to discuss changes to drilling and completion schedules. Gas from these wells will be processed at a Lucid's Red Hills Plant located in Sec 13, T24S, R33E near Jal, NM. The actual flow of the gas will be based on compression operating parameters and gathering system pressures.

Flowback Strategy

After the fracture treatment/completion operations, well(s) will be produced to temporary production tanks and gas will be flared. During flowback, the fluids and sand content will be monitored. When the produced fluids contain minimal sand, the wells will be turned to production facilities. Gas sales should start as soon as the well(s) start flowing through the production facilities, unless there are operational issues on Lucid's system at that time. Based on current information, it is Titus's belief the system can take this gas upon completion of the well(s).

Safety requirements during cleanout operations from the use of underbalanced air cleanout systems may necessitate that sand and non-pipeline quality gas be flared rather than sold on a temporary basis.

Alternatives to Reduce Flaring

Below are alternatives considered from a conceptual standpoint to reduce the amount of gas flared.

- Power Generation – On lease
 - Only a portion of gas is consumed operating the generator, remainder of gas will be flared
- Compressed Natural Gas – On lease
 - Gas flared would be minimal, but might be uneconomical to operate when gas volume declines
- NGL Removal – On lease
 - Plants are expensive, residue gas is still flared, and uneconomical to operate when gas volume declines

OCD Reviewer	Condition
pkautz	Will require a directional survey with the C-104
pkautz	Once the well is spud, to prevent ground water contamination through whole or partial conduits from the surface, the operator shall drill without interruption through the fresh water zone or zones and shall immediately set in cement the water protection string
pkautz	Oil base muds are not to be used until freshwater zones are cased and cemented providing isolation from the oil or diesel. This includes synthetic oils. Oil based mud, drilling fluids and solids must be contained in a steel closed loop system.