

District I
1625 N. French Dr., Hobbs, NM 88240
District II
811 S. First St., Artesia, NM 88210
District III
1000 Rio Brazos Rd., Aztec, NM 87410
District IV
1220 S. St. Francis Dr., Santa Fe, NM 87505

State of New Mexico
Energy, Minerals & Natural Resources

Form C-104
Revised August 1, 2011

Oil Conservation Division
1220 South St. Francis Dr.
Santa Fe, NM 87505

Submit one copy to appropriate District Office

☐ AMENDED REPORT

I. REQUEST FOR ALLOWABLE AND AUTHORIZATION TO TRANSPORT

¹ Operator name and Address Devon Energy Production Company, L.P. 333 West Sheridan, Oklahoma City, OK 73102		² OGRID Number 6137
		³ Reason for Filing Code/ Effective Date NW / 11/3/20
⁴ API Number 30-025-46540	⁵ Pool Name WC-025 G-09 S243310P; UPPER WOLFCAMP	⁶ Pool Code 98135 KZ
⁷ Property Code 316705	⁸ Property Name Blue Krait 23 Fed	⁹ Well Number 33H

II. ¹⁰ Surface Location

UI or lot no.	Section	Township	Range	Lot Idn	Feet from the	North/South line	Feet from the	East/West line	County
P	23	24S	33E		200	South	1144	East	Lea

¹¹ Bottom Hole Location

UL or lot no.	Section	Township	Range	Lot Idn	Feet from the	North/South line	Feet from the	East/West line	County
A	23	24S	33E		33	North	1234	East	Lea

¹² Lse Code F **¹³ Producing Method Code** F **¹⁴ Gas Connection Date** 11/3/20 **¹⁵ C-129 Permit Number** **¹⁶ C-129 Effective Date** **¹⁷ C-129 Expiration Date**

III. Oil and Gas Transporters

¹⁸ Transporter OGRID	¹⁹ Transporter Name and Address	²⁰ O/G/W
174238	Enterprise 201 Park Avenue, Ste 1600 Oklahoma City, OK 73102	Oil
371960	Lucid Energy Delaware, LLC 3100 McKinnon St., Ste. 800, Dallas, TX 75201	Gas

IV. Well Completion Data

²¹ Spud Date	²² Ready Date	²³ TD	²⁴ PBDT	²⁵ Perforations	²⁶ DHC, MC
3/1/20	11/3/20	17591	17523	12660 - 17455	
²⁷ Hole Size		²⁸ Casing & Tubing Size	²⁹ Depth Set	³⁰ Sacks Cement	
17.5		13.375	1310	1205 sx CIC; Circ 751 sx	
9.875		8.625	12005	965 sx CLH; Circ 217 sx	
7.875		5.5	17569	1835 CPOZ MIX; Circ 0 sx	
		Tubing: 2.875	12325		

V. Well Test Data

³¹ Date New Oil 11/29/20	³² Gas Delivery Date 11/29/20	³³ Test Date 11/29/20	³⁴ Test Length 24 hrs	³⁵ Tbg. Pressure 1223 psi	³⁶ Csg. Pressure 308 psi
³⁷ Choke Size	³⁸ Oil 2047 bbl	³⁹ Water 1319 bbl	⁴⁰ Gas 3841 mcf		⁴¹ Test Method
⁴² I hereby certify that the rules of the Oil Conservation Division have been complied with and that the information given above is true and complete to the best of my knowledge and belief. Signature: <i>Rebecca Deal</i>			OIL CONSERVATION DIVISION		
Printed name: Rebecca Deal			Approved by: PM		
Title: Regulatory Analyst			Title: LM II		
E-mail Address: Rebecca.Deal@dvn.com			Approval Date: 4/5/2021		
Date: 12/3/2020	Phone: 405-228-8429	Request for NMOCD Ext. of time to file BLM-approved form 3160-4 within 10 days to NMOCD after BLM approval.			

DISTRICT I
1625 N. FRENCH DR., HOBBS, NM 88240
Phone: (575) 393-6161 Fax: (575) 393-0720

DISTRICT II
811 S. FIRST ST., ARTESIA, NM 88210
Phone: (575) 748-1283 Fax: (575) 748-9720

DISTRICT III
1000 RIO BRAZOS RD., AZTEC, NM 87410
Phone: (505) 334-6178 Fax: (505) 334-6170

DISTRICT IV
1220 S. ST. FRANCIS DR., SANTA FE, NM 87505
Phone: (505) 476-3460 Fax: (505) 476-3462

State of New Mexico
Energy, Minerals & Natural Resources Department
OIL CONSERVATION DIVISION
1220 SOUTH ST. FRANCIS DR.
Santa Fe, New Mexico 87505

Form C-102
Revised August 1, 2011
Submit one copy to appropriate
District Office

☒ AMENDED REPORT

WELL LOCATION AND ACREAGE DEDICATION PLAT

API Number 30-025-46540	Pool Code 98135	Pool Name WC-025 G-09 S243310P; UPPER WOLFCAMP
Property Code 316705	Property Name BLUE KRAIT 23 FED	Well Number 33H
OGRID No. 6137	Operator Name DEVON ENERGY PRODUCTION COMPANY, L.P.	Elevation 3557.2'

Surface Location

UL or lot No.	Section	Township	Range	Lot Idn	Feet from the	North/South line	Feet from the	East/West line	County
P	23	24-S	33-E		200	SOUTH	1144	EAST	LEA

Bottom Hole Location If Different From Surface

SL

UL or lot No.	Section	Township	Range	Lot Idn	Feet from the	North/South line	Feet from the	East/West line	County
A	23	24-S	33-E		33	NORTH	1234	EAST	LEA

Dedicated Acres	Joint or Infill	Consolidation Code	Order No.
320			

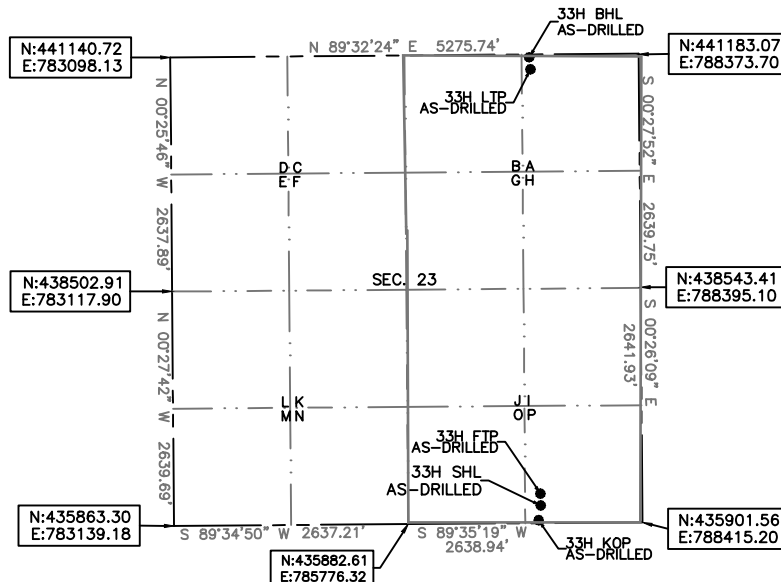
**NO ALLOWABLE WILL BE ASSIGNED TO THIS COMPLETION UNTIL ALL INTERESTS HAVE BEEN CONSOLIDATED
OR A NON-STANDARD UNIT HAS BEEN APPROVED BY THE DIVISION**

BLUE KRAIT 23 FED 33H KICK OFF POINT
ELEV: 3557.2'
LAT: 32.196399
LON: 103.538285
N: 436093.34
E: 787269.71

FIRST TAKE POINT
327' FSL 1146' FEL SEC. 23
LAT: 32.196746
LON: 103.538293
N: 436219.84
E: 787266.29

LAST TAKE POINT
168' FNL 1221' FEL SEC. 23
LAT: 32.209902
LON: 103.538542
N: 441005.37
E: 787153.97

BOTTOM OF HOLE
LAT: 32.210274
LON: 103.538585
N: 441140.59
E: 787139.56



Note: All bearings recited herein are based on the New Mexico State Plane Coordinate System, NAD 83, New Mexico East Zone 3001, US Survey Feet, all distances are grid.

OPERATOR CERTIFICATION

I hereby certify that the information herein is true and complete to the best of my knowledge and belief, and that this organization either owns a working interest or unleased mineral interest in the land including the proposed bottom hole location or has a right to drill this well at this location pursuant to a contract with an owner of such mineral or working interest, or to a voluntary pooling agreement or a compulsory pooling order heretofore entered by the division.

Rebecca Deal 11/19/2020
Signature Date

Rebecca Deal, Regulatory Analyst
Printed Name

rebecca.deal@dm.com

E-mail Address

SURVEYOR CERTIFICATION

I hereby certify that the well location shown on this plat was plotted from field notes of actual surveys made by me or under my supervision, and that the same is true and correct to the best of my belief.

04/15/2020

Signature & Seal of Professional Surveyor



11/2/20

Certificate No. 22404

B.L. LAMAN

DRAWN BY: CM

Intent ☐ As Drilled ☒

API # 30-025-46540		
Operator Name: DEVON ENERGY PRODUCTION COMPANY, LP.	Property Name: BLUE KRAIT 23 FED	Well Number 33H

Kick Off Point (KOP)

UL P	Section 23	Township 24-S	Range 33-E	Lot	Feet 35	From N/S SOUTH	Feet 1168	From E/W EAST	County LEA
Latitude 32.195944					Longitude 103.538364			NAD	

First Take Point (FTP)

UL P	Section 23	Township 24-S	Range 33-E	Lot	Feet 327	From N/S SOUTH	Feet 1146	From E/W EAST	County LEA
Latitude 32.196746					Longitude 103.538293			NAD 83	

Last Take Point (LTP)

UL A	Section 23	Township 24-S	Range 33-E	Lot	Feet 168	From N/S NORTH	Feet 1221	From E/W EAST	County LEA
Latitude 32.209902					Longitude 103.538542			NAD 83	

Is this well the defining well for the Horizontal Spacing Unit? ☐Is this well an infill well? ☐

If infill is yes please provide API if available, Operator Name and well number for Defining well for Horizontal Spacing Unit.

API #		
Operator Name:	Property Name:	Well Number

KZ 06/29/2018



Devon Energy Production Company, L.P.

Lea Co, New Mexico (NAD-83)

Blue Krait 23 Fed 33H

Blue Krait 23 Fed 33H

Lateral #1

Design: Lateral #1

Standard Survey Report

15 April, 2020





Skyline Directional Survey Report



Company:	Devon Energy Production Company, L.P.	Local Co-ordinate Reference:	Site Blue Krait 23 Fed 33H
Project:	Lea Co, New Mexico (NAD-83)	TVD Reference:	Rig KB @ 3581.0usft (Cactus 168)
Site:	Blue Krait 23 Fed 33H	MD Reference:	Rig KB @ 3581.0usft (Cactus 168)
Well:	Blue Krait 23 Fed 33H	North Reference:	Grid
Wellbore:	Lateral #1	Survey Calculation Method:	Minimum Curvature
Design:	Lateral #1	Database:	Compass_DSN

Project	Lea Co, New Mexico (NAD-83)		
Map System:	US State Plane 1983	System Datum:	Mean Sea Level
Geo Datum:	North American Datum 1983		
Map Zone:	New Mexico Eastern Zone		

Site	Blue Krait 23 Fed 33H		
Site Position:		Northing:	436,093.34 usft
From:	Map	Easting:	787,269.71 usft
Position Uncertainty:	0.0 usft	Slot Radius:	13-3/16 "
		Latitude:	32° 11' 47.035 N
		Longitude:	103° 32' 17.825 W

Well	Blue Krait 23 Fed 33H		
Well Position	+N/-S	0.0 usft	Northing:
	+E/-W	0.0 usft	Easting:
Position Uncertainty	0.0 usft	Wellhead Elevation:	usft
Grid Convergence:	0.42 °	Latitude:	32° 11' 47.035 N
		Longitude:	103° 32' 17.825 W
		Ground Level:	3,557.2 usft

Wellbore	Lateral #1		
Magnetics	Model Name	Sample Date	Declination (°)
	IGRF2015	1/24/2020	6.65
			Dip Angle (°)
			60.01
			Field Strength (nT)
			47,656.41605744

Design	Lateral #1		
Audit Notes:			
Version:	1.0	Phase:	ACTUAL
		Tie On Depth:	0.0
Vertical Section:	Depth From (TVD) (usft)	+N/-S (usft)	+E/-W (usft)
	0.0	0.0	0.0
			Direction (°)
			0.00

Survey Program	Date	4/15/2020		
From (usft)	To (usft)	Survey (Wellbore)	Tool Name	Description
215.0	17,591.0	Survey #1 (Lateral #1)	MWD	MWD - Skyline

Survey										
Measured Depth (usft)	Inclination (°)	Azimuth (°)	Vertical Depth (usft)	+N/-S (usft)	+E/-W (usft)	Vertical Section (usft)	Dogleg Rate (°/100usft)	Build Rate (°/100usft)	Turn Rate (°/100usft)	
0.0	0.00	0.00	0.0	0.0	0.0	0.0	0.00	0.00	0.00	
215.0	0.10	328.00	215.0	0.2	-0.1	0.2	0.05	0.05	0.00	
305.0	0.40	269.00	305.0	0.2	-0.5	0.2	0.40	0.33	-65.56	
396.0	0.20	302.20	396.0	0.3	-0.9	0.3	0.28	-0.22	36.48	
488.0	0.40	296.40	488.0	0.5	-1.3	0.5	0.22	0.22	-6.30	
580.0	0.50	256.00	580.0	0.6	-2.0	0.6	0.35	0.11	-43.91	
672.0	0.40	256.50	672.0	0.4	-2.7	0.4	0.11	-0.11	0.54	
764.0	0.70	272.60	764.0	0.4	-3.6	0.4	0.36	0.33	17.50	
855.0	0.50	275.10	855.0	0.4	-4.5	0.4	0.22	-0.22	2.75	
949.0	0.60	261.60	949.0	0.4	-5.4	0.4	0.17	0.11	-14.36	



Skyline Directional Survey Report



Company:	Devon Energy Production Company, L.P.	Local Co-ordinate Reference:	Site Blue Krait 23 Fed 33H
Project:	Lea Co, New Mexico (NAD-83)	TVD Reference:	Rig KB @ 3581.0usft (Cactus 168)
Site:	Blue Krait 23 Fed 33H	MD Reference:	Rig KB @ 3581.0usft (Cactus 168)
Well:	Blue Krait 23 Fed 33H	North Reference:	Grid
Wellbore:	Lateral #1	Survey Calculation Method:	Minimum Curvature
Design:	Lateral #1	Database:	Compass_DSN

Survey									
Measured Depth (usft)	Inclination (°)	Azimuth (°)	Vertical Depth (usft)	+N/-S (usft)	+E/-W (usft)	Vertical Section (usft)	Dogleg Rate (°/100usft)	Build Rate (°/100usft)	Turn Rate (°/100usft)
1,041.0	0.60	273.80	1,041.0	0.3	-6.4	0.3	0.14	0.00	13.26
1,133.0	0.70	278.20	1,133.0	0.5	-7.4	0.5	0.12	0.11	4.78
1,224.0	0.70	276.50	1,224.0	0.6	-8.5	0.6	0.02	0.00	-1.87
1,255.0	0.80	280.90	1,255.0	0.7	-8.9	0.7	0.37	0.32	14.19
1,333.0	0.50	298.10	1,333.0	0.9	-9.8	0.9	0.45	-0.38	22.05
1,423.0	0.60	325.60	1,422.9	1.5	-10.4	1.5	0.31	0.11	30.56
1,517.0	0.90	211.50	1,516.9	1.3	-11.0	1.3	1.35	0.32	-121.38
1,611.0	2.60	170.20	1,610.9	-1.5	-11.1	-1.5	2.14	1.81	-43.94
1,705.0	4.30	168.90	1,704.7	-7.0	-10.0	-7.0	1.81	1.81	-1.38
1,799.0	4.80	172.00	1,798.4	-14.4	-8.8	-14.4	0.59	0.53	3.30
1,894.0	4.70	174.00	1,893.1	-22.2	-7.8	-22.2	0.20	-0.11	2.11
1,989.0	4.50	176.60	1,987.8	-29.8	-7.2	-29.8	0.30	-0.21	2.74
2,083.0	4.60	177.20	2,081.5	-37.2	-6.8	-37.2	0.12	0.11	0.64
2,177.0	4.10	174.60	2,175.2	-44.3	-6.3	-44.3	0.57	-0.53	-2.77
2,272.0	4.00	175.20	2,270.0	-51.0	-5.7	-51.0	0.11	-0.11	0.63
2,366.0	3.90	176.80	2,363.8	-57.5	-5.3	-57.5	0.16	-0.11	1.70
2,460.0	3.70	175.00	2,457.6	-63.7	-4.8	-63.7	0.25	-0.21	-1.91
2,554.0	3.40	178.70	2,551.4	-69.5	-4.5	-69.5	0.40	-0.32	3.94
2,651.0	3.30	176.80	2,648.2	-75.2	-4.3	-75.2	0.15	-0.10	-1.96
2,743.0	3.20	178.50	2,740.1	-80.4	-4.0	-80.4	0.15	-0.11	1.85
2,837.0	3.00	182.50	2,833.9	-85.4	-4.1	-85.4	0.31	-0.21	4.26
2,930.0	2.80	176.60	2,926.8	-90.1	-4.1	-90.1	0.39	-0.22	-6.34
3,024.0	2.60	175.60	3,020.7	-94.6	-3.8	-94.6	0.22	-0.21	-1.06
3,118.0	2.60	175.90	3,114.6	-98.8	-3.4	-98.8	0.01	0.00	0.32
3,212.0	2.60	182.70	3,208.5	-103.1	-3.4	-103.1	0.33	0.00	7.23
3,307.0	2.60	186.90	3,303.4	-107.4	-3.7	-107.4	0.20	0.00	4.42
3,400.0	2.40	184.70	3,396.3	-111.4	-4.2	-111.4	0.24	-0.22	-2.37
3,495.0	2.10	182.30	3,491.3	-115.1	-4.4	-115.1	0.33	-0.32	-2.53
3,589.0	2.10	176.30	3,585.2	-118.6	-4.4	-118.6	0.23	0.00	-6.38
3,683.0	2.00	166.70	3,679.1	-121.9	-3.9	-121.9	0.38	-0.11	-10.21
3,871.0	1.80	164.10	3,867.0	-127.9	-2.3	-127.9	0.12	-0.11	-1.38
4,057.0	1.50	167.00	4,053.0	-133.1	-1.0	-133.1	0.17	-0.16	1.56
4,246.0	1.50	180.80	4,241.9	-138.0	-0.4	-138.0	0.19	0.00	7.30
4,434.0	1.10	186.30	4,429.8	-142.2	-0.7	-142.2	0.22	-0.21	2.93
4,622.0	1.80	167.10	4,617.8	-146.9	-0.2	-146.9	0.45	0.37	-10.21
4,810.0	1.80	144.50	4,805.7	-152.2	2.2	-152.2	0.38	0.00	-12.02
4,999.0	0.90	73.80	4,994.6	-154.2	5.3	-154.2	0.91	-0.48	-37.41
5,189.0	0.60	106.00	5,184.6	-154.0	7.7	-154.0	0.27	-0.16	16.95
5,378.0	0.40	133.80	5,373.6	-154.8	9.1	-154.8	0.16	-0.11	14.71
5,566.0	0.60	169.90	5,561.6	-156.2	9.8	-156.2	0.19	0.11	19.20
5,756.0	0.40	178.50	5,751.6	-157.8	10.0	-157.8	0.11	-0.11	4.53
5,946.0	0.10	254.60	5,941.6	-158.5	9.8	-158.5	0.20	-0.16	40.05
6,135.0	0.30	95.00	6,130.6	-158.6	10.2	-158.6	0.21	0.11	-84.44



Skyline Directional Survey Report



Company:	Devon Energy Production Company, L.P.	Local Co-ordinate Reference:	Site Blue Krait 23 Fed 33H
Project:	Lea Co, New Mexico (NAD-83)	TVD Reference:	Rig KB @ 3581.0usft (Cactus 168)
Site:	Blue Krait 23 Fed 33H	MD Reference:	Rig KB @ 3581.0usft (Cactus 168)
Well:	Blue Krait 23 Fed 33H	North Reference:	Grid
Wellbore:	Lateral #1	Survey Calculation Method:	Minimum Curvature
Design:	Lateral #1	Database:	Compass_DSN

Survey									
Measured Depth (usft)	Inclination (°)	Azimuth (°)	Vertical Depth (usft)	+N/-S (usft)	+E/-W (usft)	Vertical Section (usft)	Dogleg Rate (°/100usft)	Build Rate (°/100usft)	Turn Rate (°/100usft)
6,324.0	0.40	96.60	6,319.6	-158.7	11.3	-158.7	0.05	0.05	0.85
6,511.0	0.70	64.90	6,506.6	-158.3	13.0	-158.3	0.22	0.16	-16.95
6,700.0	0.40	63.20	6,695.6	-157.5	14.6	-157.5	0.16	-0.16	-0.90
6,888.0	0.40	46.70	6,883.6	-156.8	15.7	-156.8	0.06	0.00	-8.78
7,075.0	0.40	19.30	7,070.6	-155.7	16.4	-155.7	0.10	0.00	-14.65
7,263.0	0.60	2.70	7,258.6	-154.1	16.7	-154.1	0.13	0.11	-8.83
7,452.0	0.80	336.70	7,447.6	-151.9	16.2	-151.9	0.20	0.11	-13.76
7,641.0	0.90	328.00	7,636.5	-149.5	14.9	-149.5	0.09	0.05	-4.60
7,828.0	0.50	321.80	7,823.5	-147.6	13.6	-147.6	0.22	-0.21	-3.32
8,018.0	0.40	275.90	8,013.5	-146.9	12.4	-146.9	0.19	-0.05	-24.16
8,206.0	0.40	207.20	8,201.5	-147.4	11.5	-147.4	0.24	0.00	-36.54
8,394.0	0.10	215.70	8,389.5	-148.1	11.1	-148.1	0.16	-0.16	4.52
8,582.0	0.40	261.30	8,577.5	-148.3	10.3	-148.3	0.18	0.16	24.26
8,770.0	0.40	261.10	8,765.5	-148.5	9.0	-148.5	0.00	0.00	-0.11
8,957.0	0.50	267.50	8,952.5	-148.7	7.6	-148.7	0.06	0.05	3.42
9,145.0	0.60	267.00	9,140.5	-148.8	5.8	-148.8	0.05	0.05	-0.27
9,333.0	0.80	247.40	9,328.5	-149.3	3.6	-149.3	0.16	0.11	-10.43
9,520.0	1.10	210.20	9,515.4	-151.4	1.5	-151.4	0.36	0.16	-19.89
9,708.0	1.90	187.50	9,703.4	-156.0	0.1	-156.0	0.52	0.43	-12.07
9,896.0	1.50	192.40	9,891.3	-161.5	-0.8	-161.5	0.23	-0.21	2.61
10,083.0	1.90	244.40	10,078.2	-165.2	-4.1	-165.2	0.82	0.21	27.81
10,271.0	2.30	265.60	10,266.1	-166.9	-10.7	-166.9	0.46	0.21	11.28
10,459.0	1.10	293.50	10,454.0	-166.4	-16.1	-166.4	0.76	-0.64	14.84
10,646.0	0.60	254.60	10,641.0	-166.0	-18.7	-166.0	0.39	-0.27	-20.80
10,833.0	0.50	235.80	10,828.0	-166.7	-20.3	-166.7	0.11	-0.05	-10.05
11,021.0	0.40	153.50	11,016.0	-167.7	-20.7	-167.7	0.32	-0.05	-43.78
11,209.0	0.40	174.80	11,204.0	-169.0	-20.3	-169.0	0.08	0.00	11.33
11,398.0	0.50	153.90	11,393.0	-170.4	-19.9	-170.4	0.10	0.05	-11.06
11,586.0	0.80	331.30	11,581.0	-170.0	-20.2	-170.0	0.69	0.16	94.36
11,774.0	0.70	317.60	11,769.0	-168.0	-21.6	-168.0	0.11	-0.05	-7.29
11,964.0	0.70	333.30	11,958.9	-166.1	-22.9	-166.1	0.10	0.00	8.26
12,051.0	0.80	336.50	12,045.9	-165.0	-23.4	-165.0	0.12	0.11	3.68
12,099.0	0.70	341.00	12,093.9	-164.5	-23.6	-164.5	0.24	-0.21	9.38
12,193.0	11.50	9.80	12,187.3	-154.7	-22.2	-154.7	11.59	11.49	30.64
12,287.0	20.80	8.00	12,277.5	-128.8	-18.3	-128.8	9.91	9.89	-1.91
12,355.0	29.60	5.46	12,338.9	-100.1	-15.0	-100.1	13.03	12.94	-3.74
Cross 100' FSL Perf line: 1160' FEL; 12335' MD, 12338.9' TVD									
12,382.0	33.10	4.80	12,362.0	-86.1	-13.7	-86.1	13.03	12.97	-2.44
12,430.0	41.00	5.70	12,400.3	-57.3	-11.1	-57.3	16.50	16.46	1.88
12,477.0	45.60	6.00	12,434.5	-25.3	-7.8	-25.3	9.80	9.79	0.64
12,524.0	50.70	4.60	12,465.8	9.6	-4.6	9.6	11.08	10.85	-2.98
12,571.0	56.60	1.70	12,493.7	47.3	-2.5	47.3	13.50	12.55	-6.17
12,619.0	64.40	358.40	12,517.3	89.1	-2.5	89.1	17.31	16.25	-6.88



Skyline Directional Survey Report



Company:	Devon Energy Production Company, L.P.	Local Co-ordinate Reference:	Site Blue Krait 23 Fed 33H
Project:	Lea Co, New Mexico (NAD-83)	TVD Reference:	Rig KB @ 3581.0usft (Cactus 168)
Site:	Blue Krait 23 Fed 33H	MD Reference:	Rig KB @ 3581.0usft (Cactus 168)
Well:	Blue Krait 23 Fed 33H	North Reference:	Grid
Wellbore:	Lateral #1	Survey Calculation Method:	Minimum Curvature
Design:	Lateral #1	Database:	Compass_DSN

Survey									
Measured Depth (usft)	Inclination (°)	Azimuth (°)	Vertical Depth (usft)	+N/-S (usft)	+E/-W (usft)	Vertical Section (usft)	Dogleg Rate (°/100usft)	Build Rate (°/100usft)	Turn Rate (°/100usft)
12,666.0	70.90	358.90	12,535.1	132.5	-3.6	132.5	13.86	13.83	1.06
12,714.0	75.30	358.30	12,549.1	178.4	-4.7	178.4	9.24	9.17	-1.25
12,761.0	80.90	359.80	12,558.8	224.4	-5.4	224.4	12.32	11.91	3.19
12,855.0	84.60	1.20	12,570.6	317.6	-4.6	317.6	4.20	3.94	1.49
12,949.0	88.80	3.40	12,576.1	411.3	-0.8	411.3	5.04	4.47	2.34
13,045.0	87.40	3.50	12,579.2	507.1	4.9	507.1	1.46	-1.46	0.10
13,139.0	89.50	0.30	12,581.8	601.0	8.0	601.0	4.07	2.23	-3.40
13,232.0	92.40	359.90	12,580.2	694.0	8.2	694.0	3.15	3.12	-0.43
13,326.0	93.20	359.60	12,575.6	787.9	7.8	787.9	0.91	0.85	-0.32
13,420.0	91.10	358.60	12,572.1	881.8	6.3	881.8	2.47	-2.23	-1.06
13,515.0	89.30	358.40	12,571.8	976.7	3.8	976.7	1.91	-1.89	-0.21
13,610.0	88.00	358.80	12,574.0	1,071.7	1.5	1,071.7	1.43	-1.37	0.42
13,705.0	88.60	358.80	12,576.8	1,166.6	-0.5	1,166.6	0.63	0.63	0.00
13,799.0	89.20	359.30	12,578.6	1,260.6	-2.0	1,260.6	0.83	0.64	0.53
13,893.0	91.80	0.40	12,577.8	1,354.6	-2.3	1,354.6	3.00	2.77	1.17
13,988.0	90.70	359.70	12,575.8	1,449.6	-2.2	1,449.6	1.37	-1.16	-0.74
14,083.0	93.00	359.40	12,572.7	1,544.5	-2.9	1,544.5	2.44	2.42	-0.32
14,177.0	93.40	358.90	12,567.4	1,638.3	-4.3	1,638.3	0.68	0.43	-0.53
14,270.0	91.40	358.70	12,563.5	1,731.2	-6.3	1,731.2	2.16	-2.15	-0.22
14,365.0	89.20	358.00	12,563.0	1,826.2	-9.0	1,826.2	2.43	-2.32	-0.74
14,460.0	92.00	0.40	12,562.1	1,921.2	-10.3	1,921.2	3.88	2.95	2.53
14,554.0	89.70	359.60	12,560.7	2,015.1	-10.3	2,015.1	2.59	-2.45	-0.85
14,649.0	90.00	359.50	12,560.9	2,110.1	-11.1	2,110.1	0.33	0.32	-0.11
14,744.0	88.30	358.40	12,562.3	2,205.1	-12.8	2,205.1	2.13	-1.79	-1.16
14,838.0	89.50	357.80	12,564.1	2,299.0	-16.0	2,299.0	1.43	1.28	-0.64
14,930.0	89.50	357.80	12,564.9	2,391.0	-19.5	2,391.0	0.00	0.00	0.00
15,025.0	92.50	357.30	12,563.3	2,485.8	-23.5	2,485.8	3.20	3.16	-0.53
15,119.0	93.80	357.40	12,558.1	2,579.6	-27.9	2,579.6	1.39	1.38	0.11
15,213.0	94.80	357.10	12,551.1	2,673.2	-32.4	2,673.2	1.11	1.06	-0.32
15,308.0	94.90	356.30	12,543.0	2,767.7	-37.8	2,767.7	0.85	0.11	-0.84
15,403.0	92.20	358.80	12,537.1	2,862.4	-41.9	2,862.4	3.87	-2.84	2.63
15,497.0	89.70	1.00	12,535.6	2,956.4	-42.0	2,956.4	3.54	-2.66	2.34
15,591.0	89.10	1.00	12,536.6	3,050.4	-40.4	3,050.4	0.64	-0.64	0.00
15,686.0	88.80	0.50	12,538.3	3,145.4	-39.2	3,145.4	0.61	-0.32	-0.53
15,779.0	90.00	359.90	12,539.3	3,238.4	-38.8	3,238.4	1.44	1.29	-0.65
15,873.0	90.10	358.80	12,539.2	3,332.4	-39.9	3,332.4	1.18	0.11	-1.17
15,968.0	90.20	358.10	12,538.9	3,427.3	-42.5	3,427.3	0.74	0.11	-0.74
16,062.0	90.40	358.90	12,538.5	3,521.3	-44.9	3,521.3	0.88	0.21	0.85
16,157.0	90.00	358.70	12,538.1	3,616.3	-46.9	3,616.3	0.47	-0.42	-0.21
16,251.0	90.40	358.60	12,537.8	3,710.2	-49.1	3,710.2	0.44	0.43	-0.11
16,345.0	89.80	358.10	12,537.6	3,804.2	-51.8	3,804.2	0.83	-0.64	-0.53
16,440.0	90.20	357.70	12,537.6	3,899.1	-55.3	3,899.1	0.60	0.42	-0.42
16,535.0	91.10	357.70	12,536.6	3,994.1	-59.1	3,994.1	0.95	0.95	0.00
16,629.0	89.80	356.00	12,535.8	4,087.9	-64.3	4,087.9	2.28	-1.38	-1.81



Skyline Directional Survey Report



Company:	Devon Energy Production Company, L.P.	Local Co-ordinate Reference:	Site Blue Krait 23 Fed 33H
Project:	Lea Co, New Mexico (NAD-83)	TVD Reference:	Rig KB @ 3581.0usft (Cactus 168)
Site:	Blue Krait 23 Fed 33H	MD Reference:	Rig KB @ 3581.0usft (Cactus 168)
Well:	Blue Krait 23 Fed 33H	North Reference:	Grid
Wellbore:	Lateral #1	Survey Calculation Method:	Minimum Curvature
Design:	Lateral #1	Database:	Compass_DSN

Survey									
Measured Depth (usft)	Inclination (°)	Azimuth (°)	Vertical Depth (usft)	+N/-S (usft)	+E/-W (usft)	Vertical Section (usft)	Dogleg Rate (°/100usft)	Build Rate (°/100usft)	Turn Rate (°/100usft)
16,723.0	91.60	358.20	12,534.7	4,181.8	-69.1	4,181.8	3.02	1.91	2.34
16,818.0	91.30	357.80	12,532.3	4,276.7	-72.4	4,276.7	0.53	-0.32	-0.42
16,912.0	91.00	357.10	12,530.4	4,370.6	-76.5	4,370.6	0.81	-0.32	-0.74
17,007.0	90.90	356.70	12,528.8	4,465.4	-81.7	4,465.4	0.43	-0.11	-0.42
17,101.0	90.80	355.90	12,527.4	4,559.2	-87.8	4,559.2	0.86	-0.11	-0.85
17,196.0	90.80	355.70	12,526.1	4,653.9	-94.7	4,653.9	0.21	0.00	-0.21
17,290.0	90.30	355.60	12,525.2	4,747.7	-101.8	4,747.7	0.54	-0.53	-0.11
17,385.0	91.40	355.20	12,523.8	4,842.3	-109.5	4,842.3	1.23	1.16	-0.42
17,479.0	91.30	354.50	12,521.6	4,935.9	-117.9	4,935.9	0.75	-0.11	-0.74
17,513.9	90.97	353.90	12,520.9	4,970.6	-121.4	4,970.6	1.96	-0.94	-1.72
Last Take Point (100' FNL, 1133' FEL)									
17,523.2	90.89	353.74	12,520.7	4,979.9	-122.4	4,979.9	1.96	-0.94	-1.72
Cross 100' FNL Perf line: 1234' FEL									
17,543.0	90.70	353.40	12,520.4	4,999.6	-124.6	4,999.6	1.96	-0.94	-1.72
17,591.0	90.70	353.40	12,519.9	5,047.3	-130.2	5,047.3	0.00	0.00	0.00
BHL: 1240' FWL 33' FNL; 17591' MD, 12519.9' TVD - PBHL - TD (B K 23 F 33H)									

Design Annotations				
Measured Depth (usft)	Vertical Depth (usft)	Local Coordinates		Comment
		+N/-S (usft)	+E/-W (usft)	
12,355.0	12,338.9	-100.1	-15.0	Cross 100' FSL Perf line: 1160' FEL; 12335' MD, 12338.9' TVD
17,523.2	12,520.7	4,979.9	-122.4	Cross 100' FNL Perf line: 1234' FEL
17,591.0	12,519.9	5,047.3	-130.2	BHL: 1240' FWL 33' FNL; 17591' MD, 12519.9' TVD

Checked By: _____ Approved By: _____ Date: _____

STATE OF NEW MEXICO
COUNTY OF LEA

I, **Seth Crawley**, certify that; I am employed by **Skyline Directional Drilling, LLC**; that I did on the day(s) of **3/20/2020 to 4/8/2020** conduct or supervise the taking of MWD surveys from a depth of **215 feet to a depth of 17,591 feet**; that the data is true, correct, complete and within the limitations of the tool as set forth by **Skyline Directional Drilling, LLC**; that I am authorized and qualified to make this report; that this survey was conducted at the request of **Devon Energy Production Co.** for the **Blue Krait 23 Fed 33H**, with the **API # 30-025-46540** in the **Upper Wolfcamp** field of **Lea County, New Mexico**; and that I have reviewed this report and find that it conforms to the principles and procedures as set forth by **Skyline Directional Drilling, LLC**.



Seth Crawley
Senior Well Planner

Form 3160-4
(August 2007)UNITED STATES
DEPARTMENT OF THE INTERIOR
BUREAU OF LAND MANAGEMENTFORM APPROVED
OMB No. 1004-0137
Expires: July 31, 2010

WELL COMPLETION OR RECOMPLETION REPORT AND LOG

1a. Type of Well <input checked="" type="checkbox"/> Oil Well <input type="checkbox"/> Gas Well <input type="checkbox"/> Dry <input type="checkbox"/> Other b. Type of Completion <input checked="" type="checkbox"/> New Well <input type="checkbox"/> Work Over <input type="checkbox"/> Deepen <input type="checkbox"/> Plug Back <input type="checkbox"/> Diff. Resvr. Other _____				5. Lease Serial No. NMLC0063798	
2. Name of Operator DEVON ENERGY PRODUCTION CO. Contact: REBECCA DEAL Email: rebecca.deal@dmv.com				6. If Indian, Allottee or Tribe Name	
3. Address 333 WEST SHERIDAN AVE OKLAHOMA CITY, OK 73102 3a. Phone No. (include area code) Ph: 405-228-8429				7. Unit or CA Agreement Name and No.	
4. Location of Well (Report location clearly and in accordance with Federal requirements)* At surface SESE 200FSL 1144FEL At top prod interval reported below SESE 79FNL 1157FEL At total depth NENE 33FSL 1234FEL				8. Lease Name and Well No. BLUE KRAIT 23 FED 33H 9. API Well No. 30-025-46540	
14. Date Spudded 03/01/2020		15. Date T.D. Reached 04/07/2020		16. Date Completed <input type="checkbox"/> D & A <input checked="" type="checkbox"/> Ready to Prod. 11/03/2020	
17. Elevations (DF, KB, RT, GL)* 3558 GL		10. Field and Pool, or Exploratory WC-025 G-09 S243310P; UWC 11. Sec., T., R., M., or Block and Survey or Area Sec 23 T24S R33E Mer 12. County or Parish LEA 13. State NM			
18. Total Depth: MD 17591 TVD 12520		19. Plug Back T.D.: MD 17523 TVD		20. Depth Bridge Plug Set: MD TVD	
21. Type Electric & Other Mechanical Logs Run (Submit copy of each) CBL				22. Was well cored? <input checked="" type="checkbox"/> No <input type="checkbox"/> Yes (Submit analysis) Was DST run? <input checked="" type="checkbox"/> No <input type="checkbox"/> Yes (Submit analysis) Directional Survey? <input type="checkbox"/> No <input checked="" type="checkbox"/> Yes (Submit analysis)	

23. Casing and Liner Record (Report all strings set in well)

Hole Size	Size/Grade	Wt. (#/ft.)	Top (MD)	Bottom (MD)	Stage Cementer Depth	No. of Sk. & Type of Cement	Slurry Vol. (BBL)	Cement Top*	Amount Pulled
17.500	13.375 J-55	54.5	0	1310		1205		0	751
9.875	8.625 P-110	32.0	0	12005		965		0	217
7.875	5.500 P-110	20.0	0	17569		1835		1665	0

24. Tubing Record

Size	Depth Set (MD)	Packer Depth (MD)	Size	Depth Set (MD)	Packer Depth (MD)	Size	Depth Set (MD)	Packer Depth (MD)
2.875	12325							

25. Producing Intervals

Formation	Top	Bottom	Perforated Interval	Size	No. Holes	Perf. Status
A) WOLFCAMP	12660	17455	12660 TO 17455		480	OPEN
B)						
C)						
D)						

26. Perforation Record

27. Acid, Fracture, Treatment, Cement Squeeze, Etc.

Depth Interval	Amount and Type of Material
12660 TO 17455	12,090,000# PROP, 69 BBL ACID

28. Production - Interval A

Date First Produced	Test Date	Hours Tested	Test Production	Oil BBL	Gas MCF	Water BBL	Oil Gravity Corr. API	Gas Gravity	Production Method
11/03/2020	11/29/2020	24	→	2047.0	3841.0	1319.0			FLows FROM WELL
Choke Size	Tbg. Press. Flwg. 1223 SI	Csg. Press. 308.0	24 Hr. Rate →	Oil BBL	Gas MCF	Water BBL	Gas:Oil Ratio 1876	Well Status	

28a. Production - Interval B

Date First Produced	Test Date	Hours Tested	Test Production	Oil BBL	Gas MCF	Water BBL	Oil Gravity Corr. API	Gas Gravity	Production Method
			→						
Choke Size	Tbg. Press. Flwg. SI	Csg. Press.	24 Hr. Rate →	Oil BBL	Gas MCF	Water BBL	Gas:Oil Ratio	Well Status	

(See Instructions and spaces for additional data on reverse side)

ELECTRONIC SUBMISSION #538862 VERIFIED BY THE BLM WELL INFORMATION SYSTEM

** OPERATOR-SUBMITTED ** OPERATOR-SUBMITTED ** OPERATOR-SUBMITTED **

28b. Production - Interval C

Date First Produced	Test Date	Hours Tested	Test Production →	Oil BBL	Gas MCF	Water BBL	Oil Gravity Corr. API	Gas Gravity	Production Method
Choke Size	Tbg. Press. Flwg. SI	Csg. Press.	24 Hr. Rate →	Oil BBL	Gas MCF	Water BBL	Gas:Oil Ratio	Well Status	

28c. Production - Interval D

Date First Produced	Test Date	Hours Tested	Test Production →	Oil BBL	Gas MCF	Water BBL	Oil Gravity Corr. API	Gas Gravity	Production Method
Choke Size	Tbg. Press. Flwg. SI	Csg. Press.	24 Hr. Rate →	Oil BBL	Gas MCF	Water BBL	Gas:Oil Ratio	Well Status	

29. Disposition of Gas(*Sold, used for fuel, vented, etc.*)

SOLD

30. Summary of Porous Zones (Include Aquifers):

Show all important zones of porosity and contents thereof: Cored intervals and all drill-stem tests, including depth interval tested, cushion used, time tool open, flowing and shut-in pressures and recoveries.

31. Formation (Log) Markers

Formation	Top	Bottom	Descriptions, Contents, etc.	Name	Top Meas. Depth
RUSTLER	1223	1706	BARREN	RUSTLER	1223
SALADO	1706	5210	BARREN	SALADO	1706
B/SALT	5210	5210	BARREN	B/SALT	5210
DELAWARE	5210	9207	OIL/GAS	DELAWARE	5210
BONE SPRING	9207	12292	OIL/GAS	BONE SPRING	9207
WOLFCAMP	12292			WOLFCAMP	12292

32. Additional remarks (include plugging procedure):

See attached as-drilled C-102 and Directional Plan

33. Circle enclosed attachments:

- | | | | |
|---|--------------------|---------------|-----------------------|
| 1. Electrical/Mechanical Logs (1 full set req'd.) | 2. Geologic Report | 3. DST Report | 4. Directional Survey |
| 5. Sundry Notice for plugging and cement verification | 6. Core Analysis | 7 Other: | |

34. I hereby certify that the foregoing and attached information is complete and correct as determined from all available records (see attached instructions):

**Electronic Submission #538862 Verified by the BLM Well Information System.
For DEVON ENERGY PRODUCTION CO, LP, sent to the Hobbs**

Name (*please print*) REBECCA DEAL Title REGULATORY ANALYST

Signature _____ (Electronic Submission) Date 12/01/2020

Title 18 U.S.C. Section 1001 and Title 43 U.S.C. Section 1212, make it a crime for any person knowingly and willfully to make to any department or agency of the United States any false, fictitious or fraudulent statements or representations as to any matter within its jurisdiction.

**** ORIGINAL ** ORIGINAL ** ORIGINAL ** ORIGINAL ** ORIGINAL ** ORIGINAL ** ORIGINAL ****

District I

1625 N. French Dr., Hobbs, NM 88240
Phone:(575) 393-6161 Fax:(575) 393-0720

District II

811 S. First St., Artesia, NM 88210
Phone:(575) 748-1283 Fax:(575) 748-9720

District III

1000 Rio Brazos Rd., Aztec, NM 87410
Phone:(505) 334-6178 Fax:(505) 334-6170

District IV

1220 S. St Francis Dr., Santa Fe, NM 87505
Phone:(505) 476-3470 Fax:(505) 476-3462

State of New Mexico
Energy, Minerals and Natural Resources
Oil Conservation Division
1220 S. St Francis Dr.
Santa Fe, NM 87505

CONDITIONS

Action 21415

CONDITIONS OF APPROVAL

Operator:	DEVON ENERGY PRODUCTION COMPAN	333 West Sheridan Ave.	Oklahoma City, OK73102	OGRID:	6137	Action Number:	21415	Action Type:	C-104C
-----------	--------------------------------	------------------------	------------------------	--------	------	----------------	-------	--------------	--------

OCD Reviewer	Condition
plmartinez	None