

Well Name: FEDERAL GC	Well Location: T17S / R25E / SEC 32 / SESE /	County or Parish/State: EDDY / NM
Well Number: 1	Type of Well: CONVENTIONAL GAS WELL	Allottee or Tribe Name:
Lease Number: NMNM3603	Unit or CA Name: FEDERAL GC COM (ATOKA)	Unit or CA Number: NMNM72046
US Well Number: 300152183300D2	Well Status: Producing Gas Well	Operator: EOG RESOURCES INCORPORATED

Accepted for record – NMOCD gc 4/9/2021

Notice of Intent

Type of Submission: Notice of Intent	Type of Action Plug and Abandonment
Date Sundry Submitted: 03/31/2021	Time Sundry Submitted: 11:31
Date proposed operation will begin: 06/21/2021	
Procedure Description: See attached procedure and wellbore schematics. Thank you.	

Surface Disturbance

Is any additional surface disturbance proposed?: No

NOI Attachments

Procedure Description

Federal_GC_Com_1_20210331113126.pdf

Well Name: FEDERAL GC	Well Location: T17S / R25E / SEC 32 / SESE /	County or Parish/State: EDDY / NM
Well Number: 1	Type of Well: CONVENTIONAL GAS WELL	Allottee or Tribe Name:
Lease Number: NMNM3603	Unit or CA Name: FEDERAL GC COM (ATOKA)	Unit or CA Number: NMNM72046
US Well Number: 300152183300D2	Well Status: Producing Gas Well	Operator: EOG RESOURCES INCORPORATED

Operator Certification

I certify that the foregoing is true and correct. Title 18 U.S.C. Section 1001 and Title 43 U.S.C. Section 1212, make it a crime for any person knowingly and willfully to make to any department or agency of the United States any false, fictitious or fraudulent statements or representations as to any matter within its jurisdiction. Electronic submission of Sundry Notices through this system satisfies regulations requiring a submission of Form 3160-5 or a Sundry Notice.

Operator Electronic Signature: HUERTA	Signed on: MAR 31, 2021 11:31 AM
Name: EOG RESOURCES INCORPORATED	
Title: Regulatory Specialist	
Street Address: 104 SOUTH FOURTH STREET	
City: Artesia	State: NM
Phone: (575) 748-4168	
Email address: tina_huerta@eogresources.com	

Field Representative

Representative Name:		
Street Address:		
City:	State:	Zip:
Phone:		
Email address:		

BLM Point of Contact

BLM POC Name: ZOTA M STEVENS	BLM POC Title: Petroleum Engineer
BLM POC Phone: 5752345998	BLM POC Email Address: ZSTEVENS@BLM.GOV
Disposition: Approved	Disposition Date: 04/03/2021
Signature: Zota Stevens	

Revised Procedure

1. Set CIBP at 8152 ft. Spot 40 sx cement from 8152'- 7804'. (Pressure Test) **WOC & Tag**
2. Spot 25sx from 7627'-7406'.
3. Spot 25 sx from 6650'-6429'. **WOC & Tag**
4. Spot 25 sx from 6330'-6109'. **WOC & Tag**
5. Perf @ 5295ft. Sqz 38 sx from 5295'-5143'.
6. Perf @ 4127'and Sqz 35 sx Cl C from 4127'-3986' **WOC & Tag**
7. Perf @ 2070' and Sqz 30 sx Cl C from 2070'- 1950'.
8. Perf @ 1160ft and Sqz 57 sx from 1160'-663'. **WOC & Tag**
9. Perf @ 50ft and Sqz 13sx from 50'-surface.
10. 10# MLF between plugs- Above ground steel tanks will be utilized.
11. Cut wellhead off. Set Dry Hole marker.

EOG Resources, Inc. plans to plug and abandon this well as follows:

1. MIRU all safety equipment as needed. NU BOP. POOH with production equipment.
2. Set a CIBP at 8152 ft with 40 sx Class H cement on top to 7804 ft. WOC and tag.
3. Spot a 25 sx Class H cement plug from 7627 ft – 7406 ft. This will cover Strawn top.
4. Spot a 25 sx Class H cement plug from 6650 ft – 6429 ft. This will cover perfs and Penn top.
5. Spot a 25 sx Class H cement plug from 6330 ft – 6109 ft. This will cover Cisco top and perfs.
6. Perforate at 5295 ft. Spot a 38 sx Class C cement plug from 5295 ft – 5143 ft. This will cover Wolfcamp top.
7. Perforate at 4127 ft. Spot a 35 sx Class C cement plug from 4127 ft – 3986 ft. This will cover Abo top.
8. Perforate at 2070 ft. Spot a 30 sx Class C cement plug from 2070 ft – 1950 ft. This will cover Glorieta top.
9. Perforate at 1160 ft. Spot a 57 sx Class C cement plug from 1160 ft – 663 ft. This will cover surface casing shoe and San Andres top.
10. Perforate at 50 ft. Spot a 13 sx Class C cement plug from 50 ft up to surface. Back fill as needed.
11. Cut off wellhead and install dry hole marker. Clean location as per regulated.

Wellbore schematics attached

Federal GC Com #1 Proposed

COMMENTS

9th Plug

8th Plug

7th Plug

6th Plug

5th Plug

TOC - 5959'

Wolfcamp Perfs. 6276'-6280'

4th Plug

Permo-Penn Perfs. 6524' - 6600'
3rd Plug

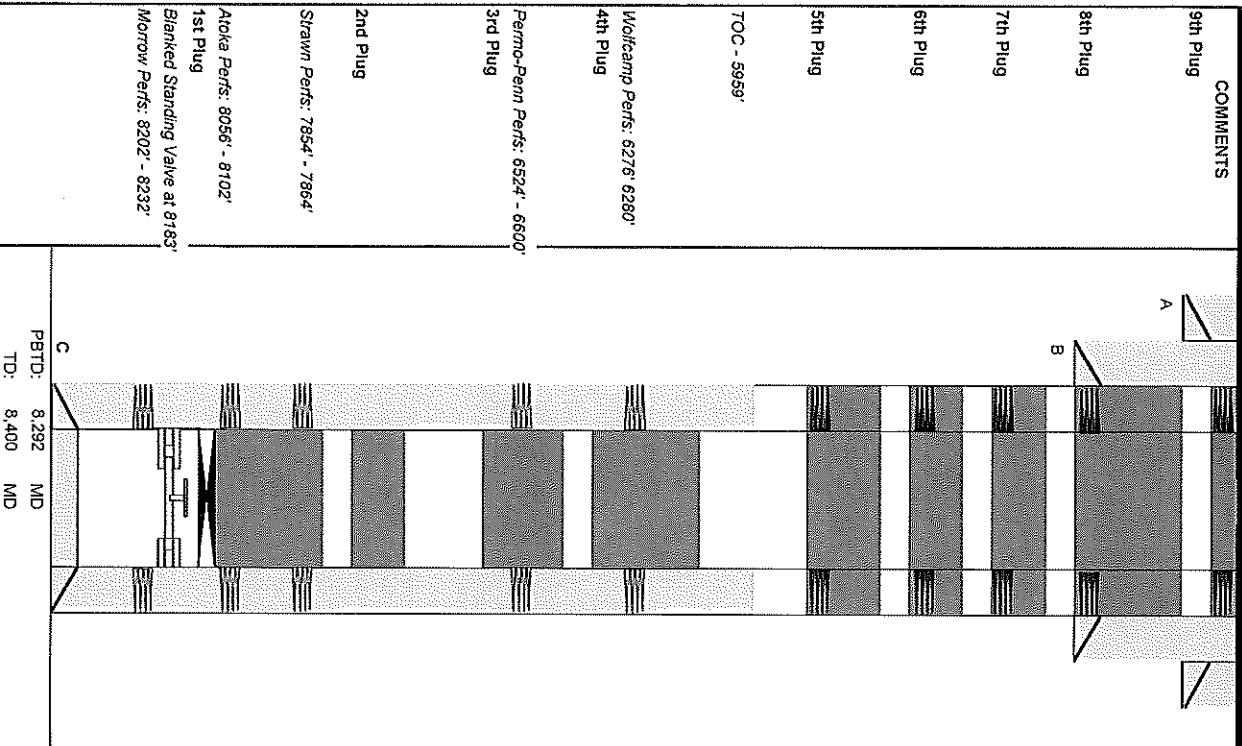
2nd Plug

Strawn Perfs. 7854' - 7864'

Atoka Perfs. 8056' - 8102'

1st Plug

Blanked Standing Valve at 8183'
Morrow Perfs. 8202' - 8232'



Sec-TWN-RNG: Sec. 32-17S-25E
FOOTAGES: 660' FSL & 660' FEL
CURRENT

API: 30-015-21833
GL: 3588
KB: 3604

CASING DETAIL

#	HOLE SIZE	SIZE	WGT	GRADE	Top	Bottom	SX Cmt	Circ/TOC	TOC Method
A	17 1/2	13 3/8	42		0	274	175	Cir	
B	12 1/4	8 5/8	24	K-55	0	1,110	800	Cir	1' ed
C	7 7/8	5 1/2	17 & 15.5	KL & KS	5950	8334	500	5950	Temp Sur

FORMATION TOPS

Formation	Top	Formation	Top	Formation	Top
San Andres	713	Cisco	6351	Morrow LS	8115
Glorieta	2010	Penn	6601	Morrow CI	8183
Abo	4057	Strawn	7517	Chesler	8350
Wolfcamp	5219	Atoka	7905		

TUBING DETAIL

#	Joints	Description	Length	OD	ID	Grade	Wt (lb/ft)	Top (ft(B))	Btm (ft(B))
		Tubing	7853	2.375	1.995	J-55	4.6	0	7853

PERFORATION DETAIL

Formation	Depths								
A	Wolfcamp	6276-6280							
B	Permo-penn	6524-6600							
C	Strawn	7854-7864							
D	Atoka	8056-8102							
E	Morrow	8202-8232							

PLUG DETAIL

Plug #	SX	CMT CLASS	TOP	BTM	A	DESCRIPTION	TAG
1	40	H	7804	8152	348	Morrow Top, Atoka Perfs/Top, Strawn Per	Y
2	25	H	7406	7627	221	Strawn Top	N
3	25	H	6429	6650	221	PP Perfs & Penn Top	N
4	25	H	6109	6330	221	Cisco Top & Wolfcamp Perfs	N
5	38	C	5143	5285	152	Wolfcamp Top	N
6	35	C	3986	4127	141	Abo Top	N
7	30	C	1950	2070	120	Glorieta Top	N
8	57	C	663	1,160	497	Surface Casing Shoe & San Andres Top	Y
9	13	C	0	50	50	Surface Plug	Y

ADDITIONAL DETAIL

8/25/1976	Perf 8202-32, Pkr @ 8166, 2500gal 7 1/2 MSA & nitrogen & 16,700gal MSA & 24,000# 20/40 w/ CO2.						
9/20/1976	Blanking plug in pkr. @ 8166, Perf Strwn @ 7854-64, 1000gal 7 1/2% w/ N2 & 3% acid w/ CO2 & 10,000# 20/40, Pkr @ 7802.						
3/28/1978	RBP @ 8115, Perf Atoka 8056-8102, 57,000# & water & CO2, Puled RBP, Standing vlv in Morrow pkr @ 8183.						
9/28/1978	Standing vlv set in on/off tool in subperson pkr @ 7805, Set RBP @ 6617, Perf & treat 6276-80 & 6524-6600.						
7/30/2018	Packer pulled & tbg. Ran w/o packer. Morrow pkr w/ standing vlv remaining in hole						

PBTD: 8,292 MD
TD: 8,400 MD

Federal GC Com #1 Current

COMMENTS

Sec-TWN-RNG: Sec. 32-17S-25E
FOOTAGES: 660' FSL & 660' FEL
CURRENT

API: 30-015-21833
GL: 3588
KB: 3604

CASING DETAIL

#	HOLE SIZE	SIZE	WGHT	GRADE	Top	Bottom	Sx Cnt	Circ/TOC	TOC Method
A	17 1/2	13 3/8	42		0	274	175	Cir	
B	12 1/4	8 5/8	24	K-55	0	1,110	800	Cir	1" ed
C	7 7/8	5 1/2	17 & 15.5	KL & KS	5950	8334	500	5950	Temp Sur

FORMATION TOPS

Formation	Top	Formation	Top
San Andres	713	Strawn	7517
Glorietta	2010	Atoka	7905
Abo	4057	Morrow LS	8115
Wolfcamp	5219	Morrow CI	8183
Cisco	6351	Chester	8350
Penn	6501		

TUBING DETAIL

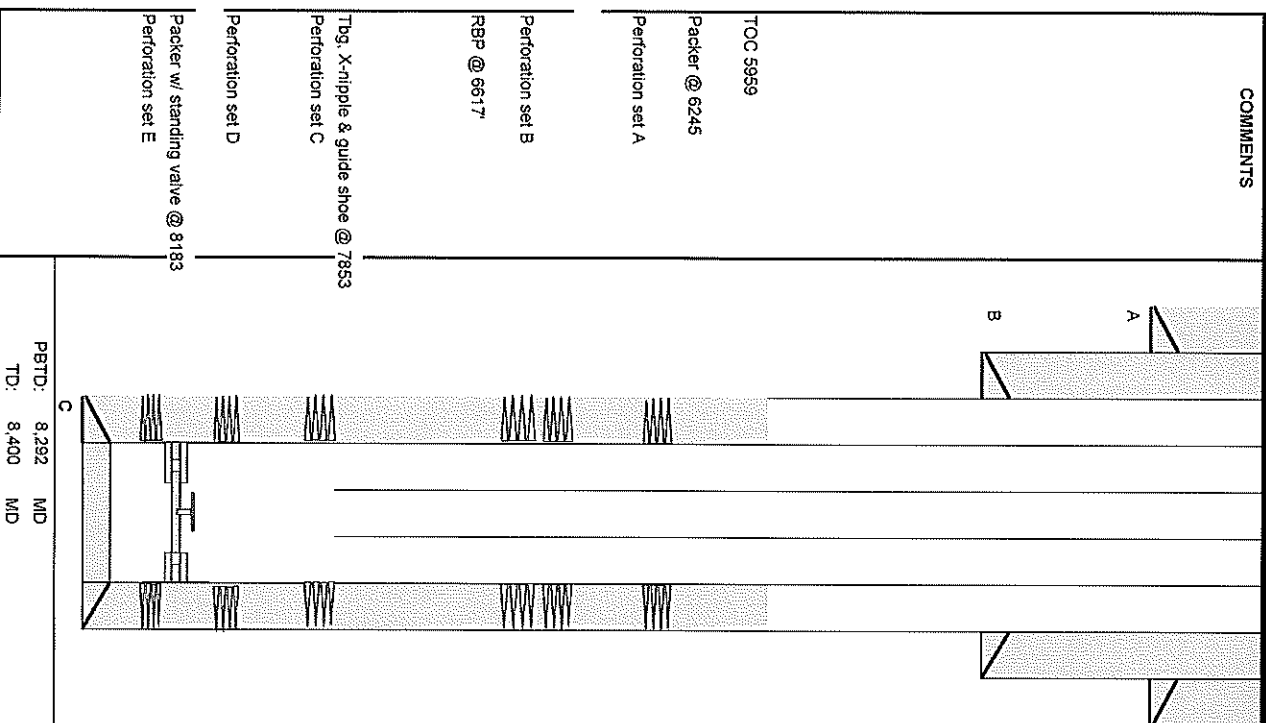
#	Joints	Description	Length	OD	ID	Grade	Wt (lb/ft)	Top (ftKB)	Btm (ftKB)
		Tubing	7853	2.375	1.995	J-55	4.6	0	7853

PERFORATION DETAIL

Formation	Depths								
A	Wolfcamp	6276-6280							
B	Permo-penn	6524-6600							
C	Strawn	7854-7864							
D	Atoka	8056-8102							
E	Morrow	8202-8232							

ADDITIONAL DETAIL

8/25/1976	perf 8202-32. Pkr @ 8166. 2500gal 7 1/2 MSA & nitrogen & 16,700gal MSA & 24,000# 20/40 w/ CO2.								
9/20/1976	Blanking plug in pkr. @ 8166. Perf Strwn @ 7854-64. 1000gal 7 1/2% w/ N2 & 5% acid w/ CO2 & 10,000# 20/40. Pkr @ 7802.								
3/28/1978	RBP @ 8115. Perf Atoka 8056-8102. 57,000# & water & CO2. Pulled RBP. Standing vlv in Morrow pkr @ 8183.								
9/28/1978	Standing vlv set in on/off tool in guiberson pkr @ 7805. Set RBP @ 6517. Perf & treat 6276-80 & 6524-6600.								
7/30/2018	Packer pulled & tbg. Ran w/o packer. Morrow pkr w/ standing vlv remaining in hole								



**BUREAU OF LAND MANAGEMENT
Carlsbad Field Office
620 East Greene Street
Carlsbad, New Mexico 88220
575-234-5972**

**Permanent Abandonment of Federal Wells
Conditions of Approval**

Failure to comply with the following Conditions of Approval may result in a Notice of Incidents of Noncompliance (INC) in accordance with 43 CFR 3163.1.

1. Plugging operations shall commence within **ninety (90)** days from the approval date of this Notice of Intent to Abandon.

If you are unable to plug the well by the 90th day provide this office, prior to the 90th day, with the reason for not meeting the deadline and a date when we can expect the well to be plugged. Failure to do so will result in enforcement action.

The rig used for the plugging procedure cannot be released and moved off without the prior approval of the authorized officer. Failure to do so may result in enforcement action.

2. **Notification:** Contact the appropriate BLM office at least 24 hours prior to the commencing of any plugging operations. For wells in Chaves and Roosevelt County, call 575-627-0272; Eddy County, call 575-361-2822; Lea County, call 575-393-3612.

3. **Blowout Preventers:** A blowout preventer (BOP), as appropriate, shall be installed before commencing any plugging operation. The BOP must be installed and maintained as per API and manufacturer recommendations. The minimum BOP requirement is a 2M system for a well not deeper than 9,090 feet; a 3M system for a well not deeper than 13,636 feet; and a 5M system for a well not deeper than 22,727 feet.

4. **Mud Requirement:** Mud shall be placed between all plugs. Minimum consistency of plugging mud shall be obtained by mixing at the rate of 25 sacks (50 pounds each) of gel per 100 barrels of brine water. Minimum nine (9) pounds per gallon.

5. **Cement Requirement:** Sufficient cement shall be used to bring any required plug to the specified depth and length. Any given cement volumes on the proposed plugging procedure are merely estimates and are not final. Unless specific approval is received, no plug except the surface plug shall be less than 25 sacks of cement. Any plug that requires a tag will have a minimum WOC time of 4 hours.

In lieu of a cement plug across perforations in a cased hole (not for any other plugs), a bridge plug set within 50 feet to 100 feet above the perforations shall be capped with 25 sacks of cement. If a bailer is used to cap this plug, 35 feet of cement shall be sufficient. Before pumping or bailing cement on top of CIBP, tag will be required to verify depth. Based on depth, a tag of the cement may be deemed necessary.

Unless otherwise specified in the approved procedure, the cement plug shall consist of either Neat Class "C", for up to 7,500 feet of depth or Neat Class "H", for deeper than 7,500 feet plugs.

6. Dry Hole Marker: All casing shall be cut-off at the base of the cellar or 3 feet below final restored ground level (whichever is deeper). **The BLM is to be notified a minimum of 4 hours prior to the wellhead being cut off to verify that cement is to surface in the casing and all annuluses. Wellhead cut off shall commence within ten (10) calendar days of the well being plugged. If the cut off cannot be done by the 10th day, the BLM is to be contacted with justification to receive an extension for completing the cut off.**

The well bore shall then be capped with a 4-inch pipe, 10-feet in length, 4 feet above ground and embedded in cement, unless otherwise noted in COA (requirements will be attached). The following information shall be permanently inscribed on the dry hole marker: well name and number, name of the operator, lease serial number, surveyed location (quarter-quarter section, section, township and range or other authorized survey designation acceptable to the authorized officer such as metes and bounds).

7. Subsequent Plugging Reporting: Within 30 days after plugging work is completed, file one original and three copies of the Subsequent Report of Abandonment, Form 3160-5 to BLM. The report should give in detail the manner in which the plugging work was carried out, the extent (by depths) of cement plugs placed, and the size and location (by depths) of casing left in the well. **Show date well was plugged.**

8. Trash: All trash, junk and other waste material shall be contained in trash cages or bins to prevent scattering and will be removed and deposited in an approved sanitary landfill. Burial on site is not permitted.

Following the submission and approval of the Subsequent Report of Abandonment, surface restoration will be required. See attached reclamation objectives.



United States Department of the Interior

BUREAU OF LAND MANAGEMENT

Carlsbad Field Office
620 E. Greene St.
Carlsbad, New Mexico 88220-6292
www.blm.gov/nm



In Reply Refer To: 1310

Reclamation Objectives and Procedures

Reclamation Objective: Oil and gas development is one of many uses of the public lands and resources. While development may have a short- or long-term effect on the land, successful reclamation can ensure the effect is not permanent. During the life of the development, all disturbed areas not needed for active support of production operations should undergo "interim" reclamation in order to minimize the environmental impacts of development on other resources and uses. At final abandonment, well locations, production facilities, and access roads must undergo "final" reclamation so that the character and productivity of the land and water are restored.

The long-term objective of final reclamation is to set the course for eventual ecosystem restoration, including the restoration of the natural vegetation community, hydrology, and wildlife habitats. In most cases this means returning the land to a condition approximating or equal to that which existed prior to the disturbance. The final goal of reclamation is to restore the character of the land and water to its pre-disturbance condition. The operator is generally not responsible for achieving full ecological restoration of the site. Instead, the operator must achieve the short-term stability, visual, hydrological, and productivity objectives of the surface management agency and take steps necessary to ensure that long-term objectives will be reached through natural processes.

To achieve these objectives, remove any and all contaminants, scrap/trash, equipment, pipelines and powerlines (**Contact service companies, allowing plenty of time to have the risers and power lines and poles removed prior to reclamation, don't wait till the last day and try to get them to remove infrastructure**). Strip and remove caliche, contour the location to blend with the surrounding landscape, re-distribute the native soils, provide erosion control as needed, rip and seed as specified in the original APD COA. This will apply to well pads, facilities, and access roads. Barricade access road at the starting point. If reserve pits have not reclaimed due to salts or other contaminants, submit a plan for approval, as to how you propose to provide adequate restoration of the pit area.

1. The Application for Permit to Drill or Reenter (APD, Form 3160-3), Surface Use Plan of Operations must include adequate measures for stabilization and reclamation of disturbed lands. Oil and Gas operators must plan for reclamation, both interim and final, up front in the APD process as per Onshore Oil and Gas Order No. 1.
2. For wells and/or access roads not having an approved plan, or an inadequate plan for surface reclamation (either interim or final reclamation), the operator must submit a proposal describing the procedures for reclamation. For interim reclamation, the appropriate time for submittal would be when filing the Well Completion or Recompletion Report and Log (Form 3160-4). For final reclamation, the appropriate time for submittal would be when filing the Notice of Intent, or the Subsequent Report of Abandonment, Sundry Notices and Reports on Wells (Form 3160-5). Interim reclamation is to be completed within 6 months of well completion, and final reclamation is to be completed within 6 months of well abandonment.
3. The operator must file a Subsequent Report Plug and Abandonment (Form 3160-5) following the plugging of a well.
4. Previous instruction had you waiting for a BLM specialist to inspect the location and provide you with reclamation requirements. If you have an approved Surface Use Plan of Operation and/or an approved Sundry Notice, you are free to proceed with reclamation as per approved APD. If you

have issues or concerns, contact a BLM specialist to assist you. It would be in your interest to have a BLM specialist look at the location and access road prior to the removal of reclamation equipment to ensure that it meets BLM objectives. Upon conclusion submit a Form 3160-5, Subsequent Report of Reclamation. This will prompt a specialist to inspect the location to verify work was completed as per approved plans.

5. The approved Subsequent Report of Reclamation will be your notice that the native soils, contour and seedbed have been reestablished. If the BLM objectives have not been met the operator will be notified and corrective actions may be required.
6. It is the responsibility of the operator to monitor these locations and/or access roads until such time as the operator feels that the BLM objective has been met. If after two growing seasons the location and/or access roads are not showing the potential for successful revegetation, additional actions may be needed. When you feel the BLM objectives have been met submit a Final Abandonment Notice (FAN), Form 3160-5, stating that all reclamation requirements have been achieved and the location and/or access road is ready for a final abandonment inspection.
7. At this time the BLM specialist will inspect the location and/or access road. If the native soils and contour have been restored, and the revegetation is successful, the FAN will be approved, releasing the operator of any further liability of the location and/or access road. If the location and/or access road have not achieved the objective, you will be notified as to additional work needed or additional time being needed to achieve the objective.

If there are any questions, please feel free to contact any of the following specialists:

Jim Amos
Supervisory Petroleum Engineering Tech
575-234-5909 (Office), 575-361-2648 (Cell)

Arthur Arias
Environmental Protection Specialist
575-234-6230

Crisha Morgan
Environmental Protection Specialist
575-234-5987

Melissa Horn
Environmental Protection Specialist
575-234-5951

Kelsey Wade
Environmental Protection Specialist
575-234-2220

Trishia Bad Bear, Hobbs Field Station
Natural Resource Specialist
575-393-3612

District I

1625 N. French Dr., Hobbs, NM 88240
Phone:(575) 393-6161 Fax:(575) 393-0720

District II

811 S. First St., Artesia, NM 88210
Phone:(575) 748-1283 Fax:(575) 748-9720

District III

1000 Rio Brazos Rd., Aztec, NM 87410
Phone:(505) 334-6178 Fax:(505) 334-6170

District IV

1220 S. St Francis Dr., Santa Fe, NM 87505
Phone:(505) 476-3470 Fax:(505) 476-3462

State of New Mexico
Energy, Minerals and Natural Resources
Oil Conservation Division
1220 S. St Francis Dr.
Santa Fe, NM 87505

CONDITIONS

Action 23161

CONDITIONS OF APPROVAL

Operator:	EOG RESOURCES INC	P.O. Box 2267	Midland, TX79702	OGRID:	7377	Action Number:	23161	Action Type:	C-103F
OCD Reviewer									Condition
gcordero									None