

Submit 1 Copy To Appropriate District Office  
 District I – (575) 393-6161  
 1625 N. French Dr., Hobbs, NM 88240  
 District II – (575) 748-1283  
 811 S. First St., Artesia, NM 88210  
 District III – (505) 334-6178  
 1000 Rio Brazos Rd., Aztec, NM 87410  
 District IV – (505) 476-3460  
 1220 S. St. Francis Dr., Santa Fe, NM 87505

State of New Mexico  
 Energy, Minerals and Natural Resources

OIL CONSERVATION DIVISION  
 1220 South St. Francis Dr.  
 Santa Fe, NM 87505

Form C-103  
 Revised July 18, 2013

WELL API NO. 30-015-29773	
5. Indicate Type of Lease STATE <input checked="" type="checkbox"/> FEE <input type="checkbox"/>	
6. State Oil & Gas Lease No. K-4473-1	
7. Lease Name or Unit Agreement Name Avalon 15 State Com	
8. Well Number 1	
9. OGRID Number 329748	
10. Pool name Avalon; Wolfcamp (gas) 71120	
SUNDRY NOTICES AND REPORTS ON WELLS (DO NOT USE THIS FORM FOR PROPOSALS TO DRILL OR TO DEEPEN OR PLUG BACK TO A DIFFERENT RESERVOIR. USE "APPLICATION FOR PERMIT" (FORM C-101) FOR SUCH PROPOSALS.)	
1. Type of Well: Oil Well <input type="checkbox"/> Gas Well <input checked="" type="checkbox"/> Other	
2. Name of Operator Tascosa Energy Partners, LLC	
3. Address of Operator 901 Missouri, Midland, Texas 79701	
4. Well Location Unit Letter <u>C</u> : <u>660</u> feet from the <u>North</u> line and <u>1650</u> feet from the West <u>line</u> Section <u>15</u> Township <u>21S</u> Range <u>26E</u> NMPM County <u>Eddy</u>	
11. Elevation (Show whether DR, RKB, RT, GR, etc.) 3192' GL- KB 3206'	

12. Check Appropriate Box to Indicate Nature of Notice, Report or Other Data

NOTICE OF INTENTION TO:		SUBSEQUENT REPORT OF:	
PERFORM REMEDIAL WORK <input type="checkbox"/>	PLUG AND ABANDON <input type="checkbox"/>	REMEDIAL WORK <input type="checkbox"/>	ALTERING CASING <input type="checkbox"/>
TEMPORARILY ABANDON <input type="checkbox"/>	CHANGE PLANS <input type="checkbox"/>	COMMENCE DRILLING OPNS. <input type="checkbox"/>	P AND A <input type="checkbox"/>
PULL OR ALTER CASING <input type="checkbox"/>	MULTIPLE COMPL <input type="checkbox"/>	CASING/CEMENT JOB <input type="checkbox"/>	
DOWNHOLE COMMINGLE <input type="checkbox"/>	PA Morrow; Recomplete in <input type="checkbox"/>		
CLOSED-LOOP SYSTEM <input type="checkbox"/>			
OTHER: <input type="checkbox"/>		OTHER: Recomplete in Wolfcamp Formation <input checked="" type="checkbox"/>	

13. Describe proposed or completed operations. (Clearly state all pertinent details, and give pertinent dates, including estimated date of starting any proposed work). SEE RULE 19.15.7.14 NMAC. For Multiple Completions: Attach wellbore diagram of proposed completion or recompletion.

See Attached Complete Description of Workover Operations:

RECORD CLEAN-UP

Spud Date:

8/4/2020

Rig Release Date:

11/5/2020

I hereby certify that the information above is true and complete to the best of my knowledge and belief.

SIGNATURE Alyssa McNear TITLE Company Project Engineer DATE 11-01-2020

Type or print name Alyssa Davanzo McNear E-mail address: adavanzo@tascosaep.com PHONE: 720 244 4417

For State Use Only

APPROVED BY: Accepted for Record - Kurt Simmons, NMOCD Santa Fe, 04/16/2021 TITLE \_\_\_\_\_ DATE \_\_\_\_\_

**TASCOSA ENERGY PARTNERS,LLC 329748****Avalon 15 C State Com # 1**

660' FNL &amp; 1650 FWL

SECTION 15, T-21-S, R-26-E

Eddy County, New Mexico

API # 30-015-29773

Wolfcamp Workover

Target Gross Interval **8406-8589****Integrity WSU # 103****13 3/8" Csg @ 314 ft**

8-5/8" Csg @ 2,193"

8 5/8" Stg Tool+ECP 1297

5-1/2" 17# J&amp;N Csg 11,109

5 1/2" Stg Tool + ECP 2123'

Mrw perfs 10,880-910 Abnd

**Mrw perfs 10740-10770 Abnd**

CIBP 10,870

**CICR @ 10,315'**

CIBP @ 10,311 + 35' cmt

2020\_08-04 MIRU Integrity Rig # 103. N/D Tree. N/U BOPE. P/U on Tubing Hanger. Tubing was parted. Wgt 20K. POH recovered 137 jts 2-3/8" N-80 EUE. 22 jts L/D due to badly pits & holes. (4250' recovered). P/U 4-11/16 OS x 3-1/16" basket grapple TIH to obstruction @ 2,600'. Secure Well & SDFN.

2020\_08-05 L/D 2-3/8" tubing. Chng Rams. P/U 2-7/8" work string. P/U 4-3/4" mule shoe + 4-3/4" string mill + fishing BHA. Tag @ 2,600 ft. Work thru bad spot @ 2,600 ft. POH. RIH w/ 3-3/4" OS + fishing assembly. Work over fish top @ 4,322'. Failed to hook up. SW&SDFN

2020\_08-06 POH w/ fishing tools. RIH w/ new OS + 3-1/16 spiral grapple + fishing assembly. Work over Fish @ 4,326'. Could not latch fish. POH RIH w/ new overshot + 3-1/16" grapple to 4,321'. Could not work over fish. POH SW & SDFN.

2020\_08-07 RIH w/ shoe + WP + Concave internal mill. Tag fish @ 4,321 ft. worked over fish from 4,321' to 4,327' (6'). Circ Clean. POH. Shoe worn on Crown. SW & SDFN.

2020\_08-08 RIH w/ 4-3/4" Flat Btm Shoe + WP w/ internal concave mill to 2600'. Work Thru spot & tag fish @ 4,327'. Could not circulate. Work shoe from 4,327' to 4,333' (6') pumping long way without returns. P/U to 2541 SW & SDFN.

2020\_08-09 RIH w/ Shoe to 2600'. Work thru spot and stacked out @ 2990'. POH to view shoe. Shoe okay. RIH w/ mule shoe and string mill. Work same spot 2550-2730'. No issues. Tag fish @ 4,321'. POH to 2,660'. SW&SDFN.

2020\_08-10 Shut down.

2020\_08-11 Run CIL 4332' to surface. Csg parted 2,592-2,632 WLM.

2020\_08-(12-17) W/O HES csg alignment tool.

2020\_08-18 Set RBP @ 3,577' + 11' sand. Secure Well & SDFN.

2020\_08-19 Set Alignment tool 2,644' to 2,580'. Alignment retainer @ 2,580.5'. Pressure casing to 500 psi above retainer. Cmt alignment tool w/ 600 sks C Thixo 14.8 ppg. Final pressure 330 psi.

2020\_08-20 Pressure up job to 550 psi. Pull out of retainer and POH. RIH w/ composite cement retainer. Set same @ 2,060'. Cemented casing & Alignment w/ 250 sks C 14.8 ppg. Final pressure 600 psi. POH w/ stinger & SW&SDFN.

2020\_08-21 TIH w/ 4-3/4" bit and BHA. Tag cmt @ 2,006 ft. Drill cement & retainer to 2,583. Change out reverse unit pump. SW&SDFN

2020\_08-22 Drilling alignment tool from 2,583 to 2,725'. Full returns. POH w/ bit & BHA. LD stabilizer. SW&SDFN

2020\_08-23 Shut down Sunday

2020\_08-24 RIH w/ 4-3/4" bit + BHA. Tag cement @ 2,725 ft. Drill cement to 2780'. Full returns. Fell out of cement. Wash to 3,562 ft. RBP @ 3577 ft + 11 ft sand. POH. Bit had band strap around cones. SW & SDFN.

2020\_08-25 RIH w/ RBP retrieving tool. Could not get below 2,617'. POH. RIH w/ retrieving tool & 4-3/4" string mill. Work to 3560'. Could not get to RBP @ 3,577. POH. No tight spots while POH. P/U 4-3/4" bit & BHA. TIH. Wash to RBP @ 3,577'. Circ Clean. POH. RIH w/ retrieving tool. Release RBP. No pressure below. POH w/ RBP. SW & SDFN.

2020\_08-26 RIH w/ 4-3/4" shoe + internal 3-3/4" concave mill. Tag @ 3,577'. Wash down 23 jts to TOF @ 4,333'. Dress off fish to 4,335'. POH. RIH w/ 4-11/16" OS w/ 2-3/8" grapple + Fishing BHA. Latch fish. Rig Repair. SW & SDFN.

2020\_08-27 R/U wireline. TIH w/ gauge & jars. Could not get into Fish @ 4,333'. R/D wireline. RIH w/ shoe & wash/ream over fish from 4,335 ft to 4,344' (9'). Metal & cement in returns. Circ Clean. P/U above fish top. SW & SDFN.



**TASCOSA ENERGY PARTNERS,LLC 329748****Avalon 15 C State Com # 1**

660' FNL &amp; 1650 FWL

SECTION 15, T-21-S, R-26-E

Eddy County, New Mexico

API # 30-015-29773

Wolfcamp Workover

Target Gross Interval **8406-8589****Integrity WSU # 103****13 3/8" Csg @ 314 ft**

8-5/8" Csg @ 2,193'

8 5/8" Stg Tool+ECP 1297

5-1/2" 17# J&amp;N Csg 11,109

5 1/2" Stg Tool + ECP 2123'

Mrw perfs 10,880-910 Abnd

**Mrw perfs 10740-10770 Abnd**

CIBP 10,870

**CICR @ 10,315'**

CIBP @ 10,311 + 35' cmt

- 2020\_08-28 Continue wash/ream over fish from 4,344' to 4,349' (5'). Stop making progress. POH. Change out shoe. RIH w/ new shoe and same BHA. Work from 4,349' to 4,401'. (52'). Cement & metal shavings in returns. POH. Shoe worn out. SW & SDFN.
- 2020\_08-29 RIH w/ 4-5/8" OS + 2-3/8" grapple & BHA. Latch fish @ 4,335'. 9" stretch. Worked tubing. Tubing parted. POH & recovered 12.6' tubing plugged w/ cement. RIH w/ 4-3/4" shoe + Fishing BHA. Tag fish @ 4,348'. Wash/Ream from 4348- 4,525'. Fell out of cement. Continue in hole to 4,562'. Circulate. POH. SW & SDFN
- 2020\_08-30 RIH w/ 4-5/8" OS + 2-3/8" grapple + Fishing assembly. Could not catch fish. POH. SW & SDFN.
- 2020\_08-31 RIH w/ concave mill + Fishing assembly. Tag fish top @ 4,355'. Mill tubing from 4,355' to 4,362' (7'). Full returns. POH. RIH w/ Overshot. Latch fish. Pull 35K over. No movement. Release OS & POH. TOF 4,362'. SW & SDFN.
- 2020\_09-01 RIH w/ Shoe + 12 jts WP + BHA. Work over fish top @ 4,362'. Wash / Ream to 4,732'. POH w/ shoe. RIH w/ 4-3/4" OS and Hill Side Sub + Fishing Assembly. SW & SDFN due to bad weather.
- 2020\_09-02 Latch fish @ 4,362'. 9" stretch only. WL could not get below 4,717' w/ string shot for back off. Pipe twisted off while work down torque. POH w/ wireline. POH w/ OS. Recovered (272') 2-3/4" fish. New fish top 4,634'.
- 2020\_09-03 RIH w/ 4-3/4" shoe + 12 jts WP + fishing BHA. Tag TOF @ 4,634'. Work down to 4,732'. Wash & ream from 4,732' to 5004'. Cement & small amount of metal in returns. POH w/ shoe. Found 228' tubing wedged in wash pipe. Remove same. New TOF 4,862'. RIH w/ shoe and WP to 1200'. SW & SD for Holiday.
- 2020\_09-(04-07) Shut down for Labor Day weekend
- 2020\_09-08 RIH w/ 4-3/4" shoe + 12 jts WP from 1200' to 2,615'. Could not get thru spot @ 2,615'. POH. RIH w/ string mill (4-3/4"). Work thru spot. POH. RIH w/ shoe & wash pipe. Tag TOF @ 4,862'. Wash & ream from 4862 to 5234' (bottom out wash pipe). POH. SW&SDFN
- 2020\_09-09 RIH w/ OS dressed w/ 2-3/8" grapples + Fishing BHA. Tag TOF @ 4,862'. Latch fish. On 9" of stretch w/ 50K over pull. Jarred Fish free. POH. Recovered 2 pieces of 2-3/8" tubing + 3 full joints. Total (130' recovered). Tubing full of cement. RIH w/ OS w/ 2-3/8" grapples + Fishing BHA. Latch fish @ 4992'. Pull 50K over string weight. Tubing parted. POH. Recovered. 27' of tubing with body break. TIH w/ OS w/ 2-3/8" grapples + Fishing BHA. Latch fish @ 5,019'. Jar free. POH w/ 203' fish. New TOF @ 5,222 ft. SW & SDFN.
- 2020\_09-10 RIH w/ shoe + 12 jts WP + BHA. Work over TOF @ 5,222 ft. Tag cement @ 5,234'. Wash & Ream 5234' to 5,350'. Fell out of cement @ 5,350'. Wash down to 5,584 (bottom out wash pipe). POH w/ WP & BHA. RIH w/ OS dressed w/ 2-3/8" grapples + fishing BHA. Latch fish @ 5,222'. Pull 50K & parted tubing. POH. Recovered 26 jts + 1 piece 2-3/8" tubing (828' fish). TOF 6,050 ft. 12 jts of tubing filled w/ cement. Cement 5-1/2" x 2-3/8" annulus gone @ 5,350 ft. Cement inside tubing gone at 5,616'. SW & SDFN.
- 2020\_09-11 RIH w/ 3-3/4" OS w/ 2-3/8" grapple + Fishing BHA. Latch fish @ 6050 ft R/U Wireline. Cut tubing @ 10,330'. R/D WL. POH & L/D 136 jts of 2-3/8" tubing (4,284' recovered). TOF @ 10,330 ft. SW & SDFN.
- 2020\_09-(12-13) SDFWE
- 2020\_09-14 RIH w/ mule shoe and string mill. Dress tight spot 2,615' & 4,350'. RIH to Fish top @ 10,330 ft. POH L/D BHA. SW & SDFN.
- 2020\_09-15 R/U wireline. Run RCBL & CIL logs. TOC 5,960 ft per CBL. RD wireline.
- 2020\_09-16 RIH w/ OS dressed w/ 2-3/8" grapples + fishing BHA. Tag fill above fish top @ 10,320 ft. Wash down to fish @ 10,330'. Could not latch fish. POH. No recovery. SW & SDFN
- 2020\_09-17 L/D fishing tools. Release Reverse package. Clean out Reverse Pit. Release Fishing tools.
- 2020\_09-(18-21) Shut down for Long Weekend.



**TASCOSA ENERGY PARTNERS,LLC 329748****Avalon 15 C State Com # 1**

660' FNL &amp; 1650 FWL

SECTION 15, T-21-S, R-26-E

Eddy County, New Mexico

API # 30-015-29773

Wolfcamp Workover

Target Gross Interval **8406-8589****Integrity WSU # 103****13 3/8" Csg @ 314 ft**

8-5/8" Csg @ 2,193"

8 5/8" Stg Tool+ECP 1297

5-1/2" 17# J&amp;N Csg 11,109

5 1/2" Stg Tool + ECP 2123'

Mrw perfs 10,880-910 Abnd

**Mrw perfs 10740-10770 Abnd**

CIBP 10,870

**CICR @ 10,315'**

CIBP @ 10,311 + 35' cmt

2020\_09-22 RIH w/ Cement Retainer on workstring. Tag TOF @ 10,330. Could not set retainer. POH.

2020\_09-23 RIH w/ new Cement Retainer on work string. Set Same @ 10,315'. Test tubing to 3,500 psi. Pressure up on fish/morrow perfs to 500 psi for 23 mins. Okay. Pressure up to 1000 psi on fish / morrow perfs. Okay. POH w/ retainer stinger.

2020\_09-24 R/U wireline. Set CIBP @ 10,311 ft. Cap w/ 35' cement. R/D wireline. Morrow Plug & Abandoned okayed by State Rep Gilbert Cordero.

2020\_09-(25-29) Shut Down for Long Weekend w/o NMOCD plug back approval and or delayed C-101 Approval. Submitted 9-1-2020 via upload portal including \$500 fee. Original request sent in on Sundry mailed prior to start of operation. We were Informed by NMOCD that we must upload Sundry to the portal. We then tried to upload sundry and were informed we must do a C-101 + \$500 to plug back. C-101 was uploaded Sept 1<sup>st</sup> but wasn't reviewed until Tuesday the 29<sup>th</sup>.

2020\_09-30 RIH w/ open ended 2-7/8" tubing to 9320 ft. Mix and pump 22 sks "H" (± 4.5 bbls) balanced plug. POH to 8,660 ft.

2020\_10-01 RIH w/ open ended tubing. Tagged balanced plug @ 9,126'. Plug 200' from 9320-9126. Top of Strawn 9,336 ft. Set CIBP for Wolfcamp well bottom @ 8,650 ft. Perforate Wolfcamp lower 8,584-89 (90° phase) 4 spf (20 holes) w/ 3-3/8" casing gun. RIH w/ Watson packer to 8344'. SDFN

2020\_10-02 Set Mechanical packer @ 8,441'. Acidize lwr Wlfcmp 8,584-89 w/ 500 gals 15% HCL NEFE @ 3 BPM 3000 psi. ISIP 2,674 psi. 15 min 2,365

2020\_10-(03-04) SDFWE

2020\_10-05 Release pkr & POH.

2020\_10-06 Set permanent packer via wireline @ 8,354'. RIH testing 2-7/8" work string to 8000 psi.

2020\_10-07 Land seal assembly. Space out.

2020\_10-08 Install frac tree.

2020\_10-(09-12) W/O Frac equipment

2020\_10-13 Test lines to 8K. Frac Wlfcmp zone 8584-89 w/ 325 lbs 100 mesh + 22,218 lbs 20/40 wht. Lost all pressure. Shut down. R/D Frac Equipment.

2020\_10-14 MIRU WSU. Rel on/off tool. P/U 211'. Tubing Split. Finish POH.

2020\_10-15 RIH w/ new on/off tool overshot testing tubing to 8,000 psi. land tubing. N/U Frac tree.

2020\_10-16 MIRU WL. Tag sand above perfs @ 8,530'. 89' above perfs 8584-89. Perforate Upper Wlfcmp 8,420-26 (4spf) 0° phase w/ 1-11/16" tubing gun. Total 24 holes. R/D WL & Release WSU.

2020\_10-17 MIRU Kill truck. Break down formation 3400 psi .5 BPM.

2020\_10-(18-26) W/O Frac Crews and Equipment. Scheduled 10-27-2020

2020\_10-27 R/U Frac Equipment. Frac upper wlfcmp 8,420-26 w/ 500 gals 15% HCL NEFE lead. Propped w/ 27,780 lbs 100 mesh + 31,435 lbs 30/50 wht. Used slick water, 20 lb linear gel and 20lb XL gel as proppant carrier. Job screened out w/ 6200 psi. Flowback sand and forced closed zone.

2020\_10-28 19 hrs FTP 200 psi on 48/64 ck. Produced 103 BO, 522 BLW,

2020\_10-29 24 hrs FTP 160 psi on 48/64 ck. Produced 242 BO, 95 BLW, Short 339 BLW, 227 mcf to DCP Sales. Flow back until 11/4/2020.

2020\_11-4 RIH w/ gauge ring and tag sand at 8538'. Perfs covered with 51' of sand. Decided to change out frac tree and C/O wellbore to PBTD.

2020\_11-5 Kill well with 30 bbls. ND frac stack. Latch back onto pkr, set pkr in 14K pts compression. Land tbg hanger, ND BOP and NU 5k tree. NU 1-1/4" coil unit. RIH and C/O 120' of sand from 8530'-8650'. Total fluid pumped = 71 BFW w/ 5 gals of foamer. RDMO coil. Turn well over to flowhand. **Well returned to production on 11/5/2020.**

**Avalon 15 C State Com # 1 (29773)**Location: **Section 15, T21S, R26E, Eddy County, New Mexico**

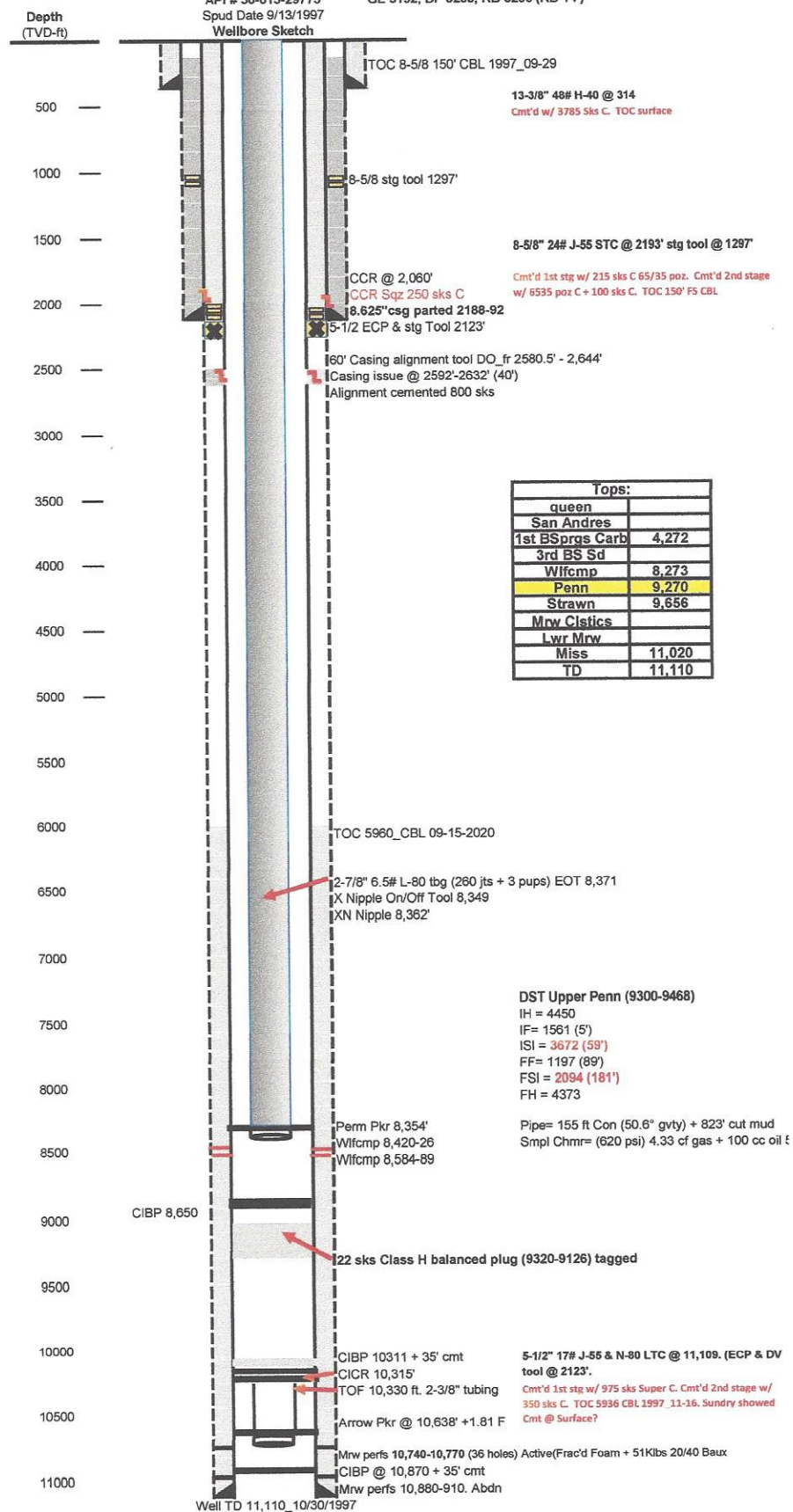
660 FNL &amp; 1650 FWL\_N2 320 Proration

API # 30-015-29773

GL 3192, DF 3205, KB 3206 (KB 14')

Spud Date 9/13/1997

Wellbore Sketch



**District I**  
1625 N. French Dr., Hobbs, NM 88240  
Phone:(575) 393-6161 Fax:(575) 393-0720  
**District II**  
811 S. First St., Artesia, NM 88210  
Phone:(575) 748-1283 Fax:(575) 748-9720  
**District III**  
1000 Rio Brazos Rd., Aztec, NM 87410  
Phone:(505) 334-6178 Fax:(505) 334-6170  
**District IV**  
1220 S. St Francis Dr., Santa Fe, NM 87505  
Phone:(505) 476-3470 Fax:(505) 476-3462

**State of New Mexico**  
**Energy, Minerals and Natural Resources**  
**Oil Conservation Division**  
**1220 S. St Francis Dr.**  
**Santa Fe, NM 87505**

CONDITIONS

Action 24109

**CONDITIONS OF APPROVAL**

Operator: TASCOSA ENERGY PARTNERS, L.L.C			901 W. Missouri Ave	Midland, TX79701	OGRID: 329748	Action Number: 24109	Action Type: C-103Z
OCD Reviewer					Condition		
ksimmons					None		