

Office
 District I – (575) 393-6161
 1625 N. French Dr., Hobbs, NM 88240
 District II – (575) 748-1283
 811 S. First St., Artesia, NM 88210
 District III – (505) 334-6178
 1000 Rio Brazos Rd., Aztec, NM 87410
 District IV – (505) 476-3460
 1220 S. St. Francis Dr., Santa Fe, NM
 87505

State of New Mexico
 Energy, Minerals and Natural Resources

Form C-103
 Revised July 18, 2013

OIL CONSERVATION DIVISION
 1220 South St. Francis Dr.
 Santa Fe, NM 87505

SUNDRY NOTICES AND REPORTS ON WELLS (DO NOT USE THIS FORM FOR PROPOSALS TO DRILL OR TO DEEPEN OR PLUG BACK TO A DIFFERENT RESERVOIR. USE "APPLICATION FOR PERMIT" (FORM C-101) FOR SUCH PROPOSALS.)		WELL API NO. 30-015-23242
1. Type of Well: Oil Well <input type="checkbox"/> Gas Well <input type="checkbox"/> Other <input type="checkbox"/>		5. Indicate Type of Lease STATE <input checked="" type="checkbox"/> FEE <input type="checkbox"/>
2. Name of Operator MATADOR PRODUCTION COMPANY		6. State Oil & Gas Lease No. LO-4857-2
3. Address of Operator 5400 LBJ FREEWAY STE 1500, DALLAS, TX 75240		7. Lease Name or Unit Agreement Name TRAVIS 24 STATE
4. Well Location Unit Letter <u>H</u> : 1980 feet from the <u>North</u> line and <u>660</u> feet from the <u>East</u> line Section <u>24</u> Township <u>18S</u> Range <u>28E</u> NMPM County <u>Eddy</u>		8. Well Number <u>1</u>
11. Elevation (Show whether DR, RKB, RT, GR, etc.) 3529 GR		9. OGRID Number 228937
		10. Pool name or Wildcat ILLINOIS CAMP; BONE SPRING, EAST

12. Check Appropriate Box to Indicate Nature of Notice, Report or Other Data

NOTICE OF INTENTION TO:	SUBSEQUENT REPORT OF:
PERFORM REMEDIAL WORK <input type="checkbox"/>	REMEDIAL WORK <input type="checkbox"/>
TEMPORARILY ABANDON <input type="checkbox"/>	ALTERING CASING <input type="checkbox"/>
PULL OR ALTER CASING <input type="checkbox"/>	COMMENCE DRILLING OPNS. <input type="checkbox"/>
DOWNHOLE COMMINGLE <input type="checkbox"/>	P AND A <input type="checkbox"/>
CLOSED-LOOP SYSTEM <input type="checkbox"/>	CASING/CEMENT JOB <input type="checkbox"/>
OTHER: Re-complete <input checked="" type="checkbox"/>	OTHER: <input type="checkbox"/>

13. Describe proposed or completed operations. (Clearly state all pertinent details, and give pertinent dates, including estimated date of starting any proposed work). SEE RULE 19.15.7.14 NMAC. For Multiple Completions: Attach wellbore diagram of proposed completion or recompletion.

Objective: Abandon 3rd Bone Spring. Perforate and frac 1st Bone Spring. Return to production.

- PJSM. MIRU workover rig and supporting equipment.
- POOH w/ rods and pump. Release TAC and POOH w/ tbg.
- MIRU WL. WL set CIBP @ 8,080' (38' above current top perf).
- Dump bail 50' CI H cmt on top of CIBP. WOC and tag. Pressure test csg.
- WL perf First Bone Spring interval +/- 6,477' – 6,625'.
- RIH w/ pkr and workstring. MIRU frac crew and supporting equipment.
- Frac First Bone Spring Sand w/ 1,500 bbls and 150,000 lb.
- Flowback well. Release pkr and POOH w/ pkr and workstring.
- RIH w/ production tbg and TAC. RIH w/ rods and pump.
- RDMO.

*Current and proposed WBDs attached

Spud Date:

Rig Release Date:

I hereby certify that the information above is true and complete to the best of my knowledge and belief.

SIGNATURE Brett Jennings TITLE Regulatory Analyst DATE 04/21/2021

Type or print name Brett Jennings E-mail address: Brett.Jennings@matadorresources.com PHONE: 972-

For State Use Only

APPROVED BY: _____ TITLE _____ DATE _____

Conditions of Approval (if any):

District I
1625 N. French Dr., Hobbs, NM 88240
District II
811 S. First St., Artesia, NM 88210
District III
1000 Rio Brazos Road, Aztec, NM 87410
District IV
1220 S. St. Francis Dr., Santa Fe, NM 87505

State of New Mexico
Energy, Minerals and Natural Resources Department
Oil Conservation Division
1220 South St. Francis Dr.
Santa Fe, NM 87505

Submit Original
to Appropriate
District Office

GAS CAPTURE PLAN

☐ Original
☒ Amended

Operator & OGRID No.: Matador Production Company (228937)

Date: 4/30/2021

Reason for Amendment: Matador will be recompleting the well in a different production interval.

This Gas Capture Plan outlines actions to be taken by the Operator to reduce well/production facility flaring/venting for new completion (new drill, recomplete to new zone, re-frac) activity.

Note: A C-129 must be submitted and approved prior to exceeding 60 days allowed by Rule 19.15.18.12.A

Well(s)/Production Facility – Name of facility

The well(s) that will be located at the production facility are shown in the table below.

Well Name	API	Well Location (ULSTR)	Footages	Expected MCF/D	Flared or Vented	Comments
TRAVIS 24 STATE #001	30-015- 23242	UL-H Sec 24 T18S R28E	1,980' FNL 660' FEL	~200	~30 days	Flare ~30 days on flowback before turn into TB. Time est. depends on sales connect and well cleanup.

Gathering System and Pipeline Notification

The well will be connected to a production facility after flowback operations are complete so long as the gas transporter system is in place. There is currently a gas transportation line tied into DCP midstream that will take the produced gas from the facility. Matador Production Company periodically provides a drilling, completion and estimated first production date for wells that are scheduled to be drilled in the foreseeable future to DCP Midstream LP. If changes occur that will affect the drilling and completion schedule, Matador Production Company will notify DCP Midstream LP. Additionally, the gas produced from the well will be processed at a processing plant further downstream and, although unanticipated, any issues with downstream facilities could cause flaring at the wellhead. The actual flow of the gas will be based on compression operating parameters and gathering system pressures measured when the well starts producing.

Flowback Strategy

After the fracture treatment/completion operations (flowback), the well will be produced to temporary production tanks and the gas will be flared or vented. During flowback, the fluids and sand content will be monitored. If the produced fluids contain minimal sand, then the well will be turned to production facilities. The gas sales should start as soon as the well starts flowing through the production facilities unless there are operational issues on the midstream system at that time. Based on current information, it is Matador's belief the system will be able to take the gas upon completion of the well.

Safety requirements during cleanout operations may necessitate that sand and non-pipeline quality gas be vented and/or flared rather than sold on a temporary basis.

Alternatives to Reduce Flaring

Below are alternatives considered from a conceptual standpoint to reduce the amount of gas flared.

- Power Generation – On lease
 - Operating a generator will only utilize a portion of the produced gas and the remainder of gas would still need to be flared.
 - Power Company has to be willing to purchase gas back and if they are willing they require a 5 year commitment to supply the agreed upon amount of power back to them. With gas decline rates and unpredictability of markets

it is impossible to agree to such long term demands. If the demands are not met then operator is burdened with penalty for not delivering.

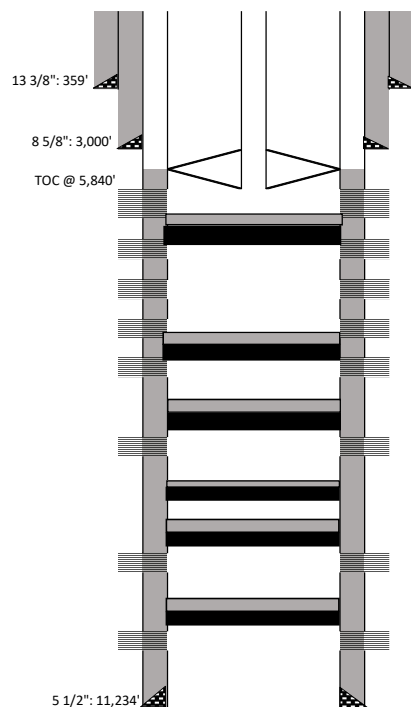
- Compressed Natural Gas – On lease
 - Compressed Natural Gas is likely to be uneconomic to operate when the gas volume declines.
- NGL Removal – On lease
 - NGL Removal requires a plant and is expensive on such a small scale rendering it uneconomic and still requires residue gas to be flared.

MATADOR PRODUCTION COMPANY
Travis 24 State #1
1980' FSL & 1980' FEL Sec 24 - 185 - 28E
Eddy County, NM

API: 30-015-23242

Current WBD: 2/22/2019

Spudded: 8/31/1980



T-Bone Perfs: 8,118' - 8,145'; 6 spf; 60deg; .46\"

CIBP @ 8,360' TOC @ 8,320'

A' Perfs: 8384'-8425'; 4 spf; 90deg; .46\"

B' Perfs: 8446'-8480'; 4 spf; 90deg; .46\"

D' Perfs: 8579-8583'; 4 spf; 90deg; .46\"

Set CIBP @ 8643'. Dump bail 35' CI H cmt. TOC: 8,585'

Perfs: 8658-92', 8710-22', 6 spf (2018)

Set CIBP @ 10554'. Dump bail CI H cmt. (2018)

Top of cmt: 10,505' (49')

(5/17/2008) 10604-10609 30 Holes

(5/22/2008) CIBP set @ 10673 (10' cmt added 6/4/2008)

(5/16/2008) CIBP set @ 10685 (Didn't hold)

(12/30/1980) 10738-10784, 10790-10796,

10842-10848 44 Holes

(12/30/1980) CIBP set @ 10890

(10/24/1980) 10900-10916 24 Holes

	Casing Information		Depth Set	Hole Size	Cementing Record	Type	Joints
	Casing Size	Weight lb/ft					
Surface	13 3/8	54.5	359	17 1/2	375 sxs of CI C (Circulated)	J-55	9
Intermediate	8 5/8	32 & 24	3000	12 1/4	1300 sxs of Hal Lite & 200 sxs of CI C & 416 sxs CI C (Circulated)	J-55	16 & 59
Production	5 1/2	17	5,251	7 7/8	750 sxs CI H 5/50 POZ & 350 sxs CI H (TOC @ 5840)	K-55	136
		17	9750			N-80	112
		20	11,234			N-80	38
						Marker Jt.	10644 & 10244
						Float Collar	11190

Rod Details (Run 3/3/18)	Length (ft)	Bottom (ft)
1-1/4"x26 PR w/ 16"x 1 1/4" liner	16	16
302- 3/4" #1 N97 rod w/ new SHT Cplgs	7550	7568
24- 7/8" #1 N97 rods w/ new SHT Cplgs	600	8168
1'x 7/8" pick up sub	1	8169
2"x1.25"x24" RHBM 80" strk 1-5/8" FN	24	8193

Tbg Details (Run 2/15/18)	Length (ft)	Bottom (ft)
250 jts 2 3/8" L-80	7968.8	7968.8
2' x 2-3/8" pop jt marker sub	2.0	7970.8
TAC	3.0	7973.8
7 jts 2 3/8" L-80	220.5	8194.3
Mechanical Hold-down SN 2 3/8"	0.8	8195.1
4' Slotted Sub	4.0	8199.1
3 jts 2 3/8" L-80	94.5	8293.6
BP	0.4	8294.0

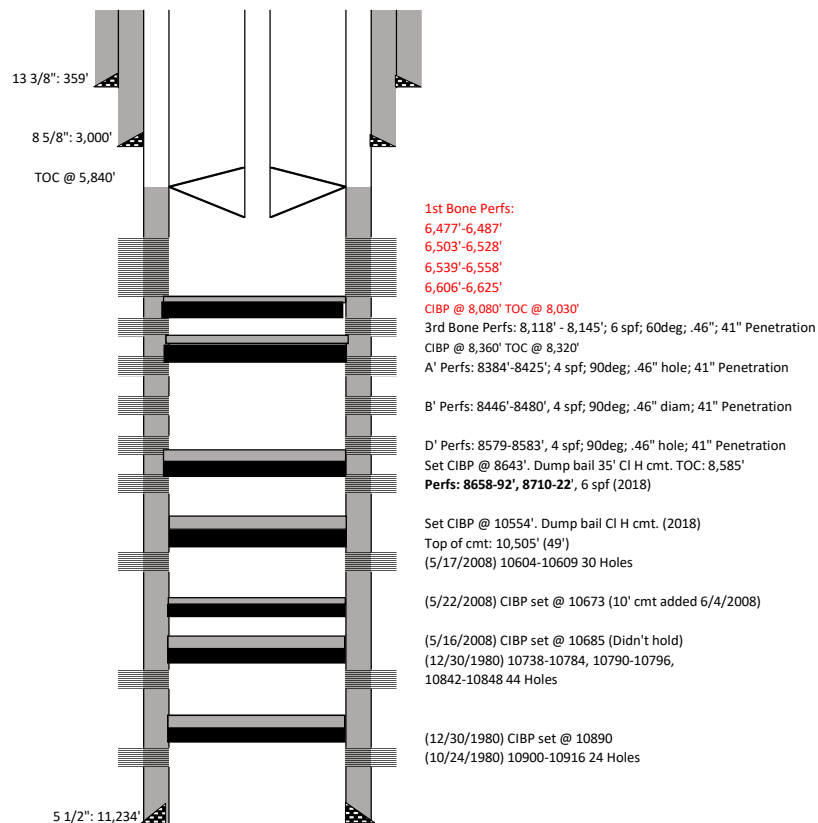
Est. Jt lgth
31.50

Geologic Markers	
Yates	
Seven Rivers	
Bowers	
Queen	
Penrose	
Grayburg	
San Andres	2629
Glorieta	
1st BS	6454
2nd BS	7081
3rd BS	8145
Wolfcamp	8387
Pennsylvanian	
Cisco	9364
Canyon	9496
Strawn	9938
Atoka	10251
Morrow	10575
Lower Morrow	
Chester	11188
TD	

MATADOR PRODUCTION COMPANY
Travis 24 State #1
1980' FSL & 1980' FEL Sec 24 - 18S - 28E
Eddy County, NM
API: 30-015-23242

Proposed 1st BS

Spudded: 8/31/1980



	Casing Information		Depth Set	Hole Size	Cementing Record	Type	Joints
	Casing Size	Weight lb/ft					
Surface	13 3/8	54.5	359	17 1/2	375 sxs of CI C (Circulated)	J-55	9
Intermediate	8 5/8	32 & 24	3000	12 1/4	1300 sxs of Hal Lite & 200 sxs of CI C & 416 sxs CI C (Circulated)	J-55	16 & 59
Production	5 1/2	17	5,251	7 7/8	750 sxs CI H 5/50 POZ & 350 sxs CI H (TOC @ 5840)	K-55	136
		17	9750			N-80	112
		20	11,234			N-80	38
							Marker Jt. Float Collar

Rod Details	Length (ft)	Bottom (ft)
1-1/4"x26 PR w/ 16"x 1 1/4" liner	16	16
240 - 3/4" #1 N97 rod w/ new SHT Cplgs	6005	6021
24- 7/8" #1 N97 rods w/ new SHT Cplgs	600	6621
1'x 7/8" pick up sub	1	6622
2"x1.25"x24" RHBM 80" strk 1-5/8" FN	24	6646

Tbg Details	Length (ft)	Bottom (ft)
204 jts 2 3/8" L-80	6422.0	6422.0
TAC	3.0	6425.0
7 jts 2 3/8" L-80	220.5	6645.5
Mechanical Hold-down SN 2 3/8"	0.8	6646.3
4' Slotted Sub	4.0	6650.3
3 jts 2 3/8" L-80	94.5	6744.8
BP	0.4	6745.2

Est. jt lgth
31.50

Geologic Markers		
Yates		
Seven Rivers		
Bowers		
Queen		
Penrose		
Grayburg		
San Andres	2629	
Glorieta		
1st BS	6454	
2nd BS	7081	
3rd BS	8145	
Wolfcamp	8387	
Pennsylvanian		
Cisco	9364	
Canyon	9496	
Strawn	9938	
Atoka	10251	
Morrow	10575	
Lower Morrow		
Chester	11188	
TD		

District I
1625 N. French Dr., Hobbs, NM 88240
Phone:(575) 393-6161 Fax:(575) 393-0720
District II
811 S. First St., Artesia, NM 88210
Phone:(575) 748-1283 Fax:(575) 748-9720
District III
1000 Rio Brazos Rd., Aztec, NM 87410
Phone:(505) 334-6178 Fax:(505) 334-6170
District IV
1220 S. St Francis Dr., Santa Fe, NM 87505
Phone:(505) 476-3470 Fax:(505) 476-3462

State of New Mexico
Energy, Minerals and Natural Resources
Oil Conservation Division
1220 S. St Francis Dr.
Santa Fe, NM 87505

COMMENTS

Action 26482

COMMENTS

Operator: MATADOR PRODUCTION COMPANY One Lincoln Centre Dallas, TX 75240	OGRID: 228937
	Action Number: 26482
	Action Type: [C-103] NOI Recompletion (C-103E)

COMMENTS

Created By	Comment	Comment Date
kpickford	KP GEO Review 5/25/2021	5/26/2021

District I

1625 N. French Dr., Hobbs, NM 88240
Phone:(575) 393-6161 Fax:(575) 393-0720

District II

811 S. First St., Artesia, NM 88210
Phone:(575) 748-1283 Fax:(575) 748-9720

District III

1000 Rio Brazos Rd., Aztec, NM 87410
Phone:(505) 334-6178 Fax:(505) 334-6170

District IV

1220 S. St Francis Dr., Santa Fe, NM 87505
Phone:(505) 476-3470 Fax:(505) 476-3462

State of New Mexico
Energy, Minerals and Natural Resources
Oil Conservation Division
1220 S. St Francis Dr.
Santa Fe, NM 87505

CONDITIONS

Action 26482

CONDITIONS

Operator: MATADOR PRODUCTION COMPANY One Lincoln Centre Dallas, TX 75240	OGRID: 228937
	Action Number: 26482
	Action Type: [C-103] NOI Recompletion (C-103E)

CONDITIONS

Created By	Condition	Condition Date
kpickford	Adhere to previous NMOCD Conditions of Approval	5/26/2021
kpickford	Notify NMOCD 24 Hours Prior to beginning operations	6/8/2021
kpickford	Must submit a C-104 for approval prior to returning to production.	6/10/2021