

Submit 1 Copy To Appropriate District Office
 District I – (575) 393-6161
 1625 N. French Dr., Hobbs, NM 88240
 District II – (575) 748-1283
 811 S. First St., Artesia, NM 88210
 District III – (505) 334-6178
 1000 Rio Brazos Rd., Aztec, NM 87410
 District IV – (505) 476-3460
 1220 S. St. Francis Dr., Santa Fe, NM 87505

State of New Mexico
 Energy, Minerals and Natural Resources

OIL CONSERVATION DIVISION
 1220 South St. Francis Dr.
 Santa Fe, NM 87505

Form C-103
 Revised July 18, 2013

WELL API NO. 30-045-31177
5. Indicate Type of Lease STATE <input checked="" type="checkbox"/> FEE <input type="checkbox"/>
6. State Oil & Gas Lease No. 30523
7. Lease Name or Unit Agreement Name Regional Training Center
8. Well Number 001
9. OGRID Number N/A
10. Pool name or Wildcat Strat Test

SUNDRY NOTICES AND REPORTS ON WELLS
 (DO NOT USE THIS FORM FOR PROPOSALS TO DRILL OR TO DEEPEN OR PLUG BACK TO A DIFFERENT RESERVOIR. USE "APPLICATION FOR PERMIT" (FORM C-101) FOR SUCH PROPOSALS.)

1. Type of Well: Oil Well ☐ Gas Well ☐ Other ☒

2. Name of Operator

San Juan College

3. Address of Operator

4601 College Blvd, Farmington, NM 87402

4. Well Location

Unit Letter J: 2285.5 feet from the FSL line and 1760 feet from the FEL line

Section 10 Township 29 Range 12 NMPM County: San Juan

11. Elevation (Show whether DR, RKB, RT, GR, etc.)
 5363' GR

12. Check Appropriate Box to Indicate Nature of Notice, Report or Other Data

NOTICE OF INTENTION TO:

PERFORM REMEDIAL WORK ☐ PLUG AND ABANDON ☐
 TEMPORARILY ABANDON ☐ CHANGE PLANS ☐
 PULL OR ALTER CASING ☐ MULTIPLE COMPL ☐
 DOWNHOLE COMMINGLE ☐
 CLOSED-LOOP SYSTEM ☐
 OTHER: ☐

SUBSEQUENT REPORT OF:

REMEDIAL WORK ☐ ALTERING CASING ☐
 COMMENCE DRILLING OPNS. ☐ P AND A ☒
 CASING/CEMENT JOB ☐
 OTHER: ☐

13. Describe proposed or completed operations. (Clearly state all pertinent details, and give pertinent dates, including estimated date of starting any proposed work). SEE RULE 19.15.7.14 NMAC. For Multiple Completions: Attach wellbore diagram of proposed completion or recompletion.

This well was plugged and abandoned on June 5, 2019.

Attached you will find the Final Activity Report and the Wellbore Schematic

Spud Date:

Rig Release Date:

I hereby certify that the information above is true and complete to the best of my knowledge and belief.

SIGNATURE Edward M. DesPlas TITLE Executive DATE 5/24/2021
 Type or print name Edward M. DesPlas E-mail address: desplase@sanjuancollege.edu PHONE: 505 566-3751
 For State Use Only

APPROVED BY: Monica Kuehling TITLE Deputy Oil and Gas Inspector DATE 5/24/2021



San Juan College
5105 College Blvd
Farmington, NM 87401

P.O. Box 1979, Farmington, NM 87499
(505) 325-2627

Name: Regional Training
Center
API:30-045-31177

Well Plugging Report

Work Detail

- Plug #1 (Mesaverde and Chacra tops) Mix and pump 57 sxs (65.55 cuft)11.67 slurry; 15.8 ppg Class "G" cement from 2930' KB to 2430' KB TOC.
- Plug #2 (Picture Cliffs and Fruitland tops) Mix and pump 57 sxs (65.55 cuft) 11.67 slurry; 15.8 ppg Class "G" cement from 1662' KB to 1162' KB TOC.
- Plug #2A (Picture Cliffs and Fruitland tops) Mix and pump 45 sxs (51.75 cuft) 9.21 slurry; 15.8 ppg Class "G" cement from 1162' KB to 762' KB TOC.
- Plug #3 (Kirtland and Ojo Alamo tops, Surface) Mix and pump 59 sxs (67.85 cuft) 12.08 slurry; 15.8 ppg Class "G" cement from 605' KB to surface TOC.
- Plug #4 (Top off surface) Mix and pump 12 sxs (13.8 cuft) 2.45 slurry; 15.8 ppg Class "G" cement.
P&A marker set at LAT: N 36*42'39.97436" LONG: W 108*8'13.36686"

06/04/2019

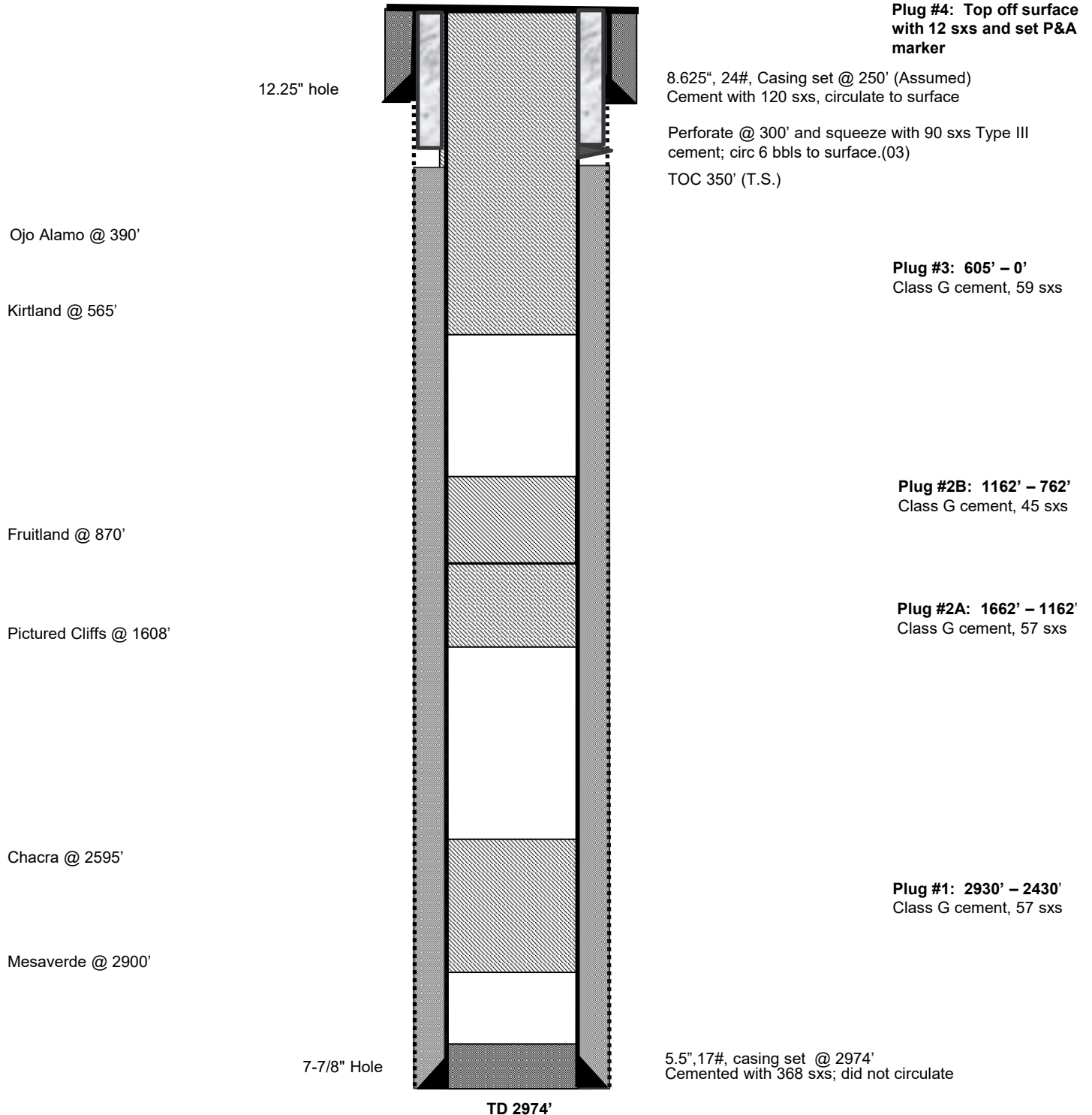
Rig move from A Plus yard to location.
HSM and JSA, spot equipment and LOTO pulling unit.
RU rig and equipment.
Check wellhead pressures, SICP-0#, SIBHP-0#. RU bleed of line to casing. (Cellar was full of oil and water, disposal truck had to be used to empty cellar).
ND wellhead, nipple up BOP and function test rams.
Rig work floor and tubing equipment.
Tally and pick up 93 joints, solid tag and EOT at 2930'KB.
RU pump to tubing and pump 70 BBLs of fresh water to load. Shut in casing valve and attempt to pressure test casing to 800# psi. GOOD test.
Spot Plug #1.
TOH and laydown 40 joints, EOT at 1662'KB. RU pump to tubing and pump 2 BBLs to establish circulation.
Spot Plug #2.
TOH laydown 16 joints, EOT at 1162'KB. RU pump to casing and pump 10 BBLs to reverse circulate clean. RU pump to tubing and pump 1 BBL to establish circulation.
Spot Plug #2A.
TOH and laydown 18 joints; EOT at 595'KB. RU pump to casing and pump 8 BBLs to reverse circulate clean.
SIW, clean and secure location. SDFD.

06/05/2019

Load supplies and equipment, travel from A Plus yard to location.
HSM and JSA, service and started equipment.
Check wellhead pressures, SICP-0#, SIBHP-0#. RU bleed off line and pump to tubing. Pump 2 BBLs to establish circulation.
Spot Plug #3.
TOH and laydown 19 joints, total of 110 joints on the float.
RD work floor and tubing equipment. ND BOP and wash rams. RU pump to casing.
Spot Plug #4.
Cut off wellhead and weld on P&A.
Rig down pulling and pumping unit. Load and secured equipment. Pre-trip vehicles for rig move.

On Site Reps:

Name	Association	Notes
John Durham	NMOCD	on location

Regional Training Center #1**As Plugged 6/5/19****Strat Test****2285.5' FSL & 1760' FEL, Section 19, T29N, R12W, San Juan County, NM****API #30-045-31177**

District I
1625 N. French Dr., Hobbs, NM 88240
Phone:(575) 393-6161 Fax:(575) 393-0720
District II
811 S. First St., Artesia, NM 88210
Phone:(575) 748-1283 Fax:(575) 748-9720
District III
1000 Rio Brazos Rd., Aztec, NM 87410
Phone:(505) 334-6178 Fax:(505) 334-6170
District IV
1220 S. St Francis Dr., Santa Fe, NM 87505
Phone:(505) 476-3470 Fax:(505) 476-3462

State of New Mexico
Energy, Minerals and Natural Resources
Oil Conservation Division
1220 S. St Francis Dr.
Santa Fe, NM 87505

CONDITIONS

Action 31647

CONDITIONS

Operator: SAN JUAN COLLEGE 4601 College Blvd Farmington, NM 87401	OGRID: 215687
	Action Number: 31647
	Action Type: [C-103] Sub. Plugging (C-103P)

CONDITIONS

Created By	Condition	Condition Date
ahvermersch	None	6/11/2021