

Form 3160-3  
(June 2015)FORM APPROVED  
OMB No. 1004-0137  
Expires: January 31, 2018

UNITED STATES  
DEPARTMENT OF THE INTERIOR  
BUREAU OF LAND MANAGEMENT  
**APPLICATION FOR PERMIT TO DRILL OR REENTER**

1a. Type of work: <input type="checkbox"/> DRILL <input type="checkbox"/> REENTER 1b. Type of Well: <input type="checkbox"/> Oil Well <input type="checkbox"/> Gas Well <input type="checkbox"/> Other 1c. Type of Completion: <input type="checkbox"/> Hydraulic Fracturing <input type="checkbox"/> Single Zone <input type="checkbox"/> Multiple Zone		5. Lease Serial No.  6. If Indian, Allottee or Tribe Name  7. If Unit or CA Agreement, Name and No.  8. Lease Name and Well No.  <div style="text-align: center;"><b>[330652]</b></div>	
2. Name of Operator <div style="text-align: center;"><b>[325830]</b></div>		9. API Well No. <div style="text-align: center;"><b>30-025-49055</b></div>	
3a. Address		3b. Phone No. (include area code)	
4. Location of Well (Report location clearly and in accordance with any State requirements. *) At surface At proposed prod. zone		10. Field and Pool, or Exploratory <b>[96438]</b>  11. Sec., T. R. M. or Blk. and Survey or Area	
14. Distance in miles and direction from nearest town or post office*		12. County or Parish	
13. State		15. Distance from proposed* location to nearest property or lease line, ft. (Also to nearest drig. unit line, if any)	
16. No of acres in lease		17. Spacing Unit dedicated to this well	
18. Distance from proposed location* to nearest well, drilling, completed, applied for, on this lease, ft.		19. Proposed Depth	
20. BLM/BIA Bond No. in file		21. Elevations (Show whether DF, KDB, RT, GL, etc.)	
22. Approximate date work will start*		23. Estimated duration	
24. Attachments  The following, completed in accordance with the requirements of Onshore Oil and Gas Order No. 1, and the Hydraulic Fracturing rule per 43 CFR 3162.3-3 (as applicable)  <div style="display: flex; justify-content: space-between;"> <div style="width: 48%;">           1. Well plat certified by a registered surveyor.            2. A Drilling Plan.            3. A Surface Use Plan (if the location is on National Forest System Lands, the SUPO must be filed with the appropriate Forest Service Office).         </div> <div style="width: 48%;">           4. Bond to cover the operations unless covered by an existing bond on file (see Item 20 above).            5. Operator certification.            6. Such other site specific information and/or plans as may be requested by the BLM.         </div> </div>			
25. Signature		Name (Printed/Typed)	
Title		Date	
Approved by (Signature)		Name (Printed/Typed)	
Title		Office	
Application approval does not warrant or certify that the applicant holds legal or equitable title to those rights in the subject lease which would entitle the applicant to conduct operations thereon. Conditions of approval, if any, are attached.			
Title 18 U.S.C. Section 1001 and Title 43 U.S.C. Section 1212, make it a crime for any person knowingly and willfully to make to any department or agency of the United States any false, fictitious or fraudulent statements or representations as to any matter within its jurisdiction.			

GCP Rec 05/04/2021

SL

(Continued on page 2)



Approval Date: 04/23/2021

 KZ  
 06/16/2021

\*(Instructions on page 2)

## INSTRUCTIONS

**GENERAL:** This form is designed for submitting proposals to perform certain well operations, as indicated on Federal and Indian lands and leases for action by appropriate Federal agencies, pursuant to applicable Federal laws and regulations. Any necessary special instructions concerning the use of this form and the number of copies to be submitted, particularly with regard to local, area, or regional procedures and practices, either are shown below or will be issued by, or may be obtained from local Federal offices.

**ITEM I:** If the proposal is to redrill to the same reservoir at a different subsurface location or to a new reservoir, use this form with appropriate notations. Consult applicable Federal regulations concerning subsequent work proposals or reports on the well.

**ITEM 4:** Locations on Federal or Indian land should be described in accordance with Federal requirements. Consult local Federal offices for specific instructions.

**ITEM 14:** Needed only when location of well cannot readily be found by road from the land or lease description. A plat, or plats, separate or on the reverse side, showing the roads to, and the surveyed location of, the well, and any other required information, should be furnished when required by Federal agency offices.

**ITEMS 15 AND 18:** If well is to be, or has been directionally drilled, give distances for subsurface location of hole in any present or objective productive zone.

**ITEM 22:** Consult applicable Federal regulations, or appropriate officials, concerning approval of the proposal before operations are started.

**ITEM 24:** If the proposal will involve hydraulic fracturing operations, you must comply with 43 CFR 3162.3-3, including providing information about the protection of usable water. Operators should provide the best available information about all formations containing water and their depths. This information could include data and interpretation of resistivity logs run on nearby wells. Information may also be obtained from state or tribal regulatory agencies and from local BLM offices.

## NOTICES

The Privacy Act of 1974 and regulation in 43 CFR 2.48(d) provide that you be furnished the following information in connection with information required by this application.

**AUTHORITY:** 30 U.S.C. 181 et seq., 25 U.S.C. 396; 43 CFR 3160

**PRINCIPAL PURPOSES:** The information will be used to: (1) process and evaluate your application for a permit to drill a new oil, gas, or service well or to reenter a plugged and abandoned well; and (2) document, for administrative use, information for the management, disposal and use of National Resource Lands and resources including (a) analyzing your proposal to discover and extract the Federal or Indian resources encountered; (b) reviewing procedures and equipment and the projected impact on the land involved; and (c) evaluating the effects of the proposed operation on the surface and subsurface water and other environmental impacts.

**ROUTINE USE:** Information from the record and/or the record will be transferred to appropriate Federal, State, and local or foreign agencies, when relevant to civil, criminal or regulatory investigations or prosecution, in connection with congressional inquiries and for regulatory responsibilities.

**EFFECT OF NOT PROVIDING INFORMATION:** Filing of this application and disclosure of the information is mandatory only if you elect to initiate a drilling or reentry operation on an oil and gas lease.

The Paperwork Reduction Act of 1995 requires us to inform you that:

The BLM connects this information to an evaluation of the technical, safety, and environmental factors involved with drilling for oil and/or gas on Federal and Indian oil and gas leases. This information will be used to analyze and approve applications. Response to this request is mandatory only if the operator elects to initiate drilling or reentry operations on an oil and gas lease. The BLM would like you to know that you do not have to respond to this or any other Federal agency-sponsored information collection unless it displays a currently valid OMB control number.

**BURDEN HOURS STATEMENT:** Public reporting burden for this form is estimated to average 8 hours per response, including the time for reviewing instructions, gathering and maintaining data, and completing and reviewing the form. Direct comments regarding the burden estimate or any other aspect of this form to U.S. Department of the Interior, Bureau of Land Management (1004-0137), Bureau Information Connection Clearance Officer (WO-630), 1849 C Street, N.W., Mail Stop 401 LS, Washington, D.C. 20240.

## Additional Operator Remarks

### Location of Well

0. SHL: NENW / 355 FNL / 1492 FWL / TWSP: 20S / RANGE: 33E / SECTION: 16 / LAT: 32.579431 / LONG: -103.672022 ( TVD: 0 feet, MD: 0 feet )  
PPP: SESW / 1321 FSL / 2310 FWL / TWSP: 20S / RANGE: 33E / SECTION: 21 / LAT: 32.555006 / LONG: -103.66935 ( TVD: 11934 feet, MD: 20646 feet )  
PPP: SENW / 1321 FNL / 2310 FWL / TWSP: 20S / RANGE: 33E / SECTION: 21 / LAT: 32.562264 / LONG: -103.669356 ( TVD: 11875 feet, MD: 18005 feet )  
PPP: NENW / 0 FSL / 2310 FWL / TWSP: 20S / RANGE: 33E / SECTION: 21 / LAT: 32.565892 / LONG: -103.669358 ( TVD: 11845 feet, MD: 16685 feet )  
PPP: NENW / 100 FNL / 2310 FWL / TWSP: 20S / RANGE: 33E / SECTION: 16 / LAT: 32.580131 / LONG: -103.671205 ( TVD: 11451 feet, MD: 11504 feet )  
BHL: SESW / 50 FSL / 2310 FWL / TWSP: 20S / RANGE: 33E / SECTION: 21 / LAT: 32.551515 / LONG: -103.671489 ( TVD: 11967 feet, MD: 22029 feet )

### BLM Point of Contact

Name: Gavin Mickwee  
Title: Land Law Examiner  
Phone: (575) 234-5972  
Email: gmickwee@blm.gov

CONFIDENTIAL

### **Review and Appeal Rights**

A person contesting a decision shall request a State Director review. This request must be filed within 20 working days of receipt of the Notice with the appropriate State Director (see 43 CFR 3165.3). The State Director review decision may be appealed to the Interior Board of Land Appeals, 801 North Quincy Street, Suite 300, Arlington, VA 22203 (see 43 CFR 3165.4). Contact the above listed Bureau of Land Management office for further information.

CONFIDENTIAL



District I  
1625 N. French Dr., Hobbs, NM 88240  
Phone: (575) 393-6161 Fax: (575) 393-0720  
District II  
811 S. First St., Artesia, NM 88210  
Phone: (575) 748-1283 Fax: (575) 748-9720  
District III  
1000 Rio Brazos Road, Aztec, NM 87410  
Phone: (505) 334-6178 Fax: (505) 334-6170  
District IV  
1220 S. St. Francis Dr., Santa Fe, NM 87505  
Phone: (505) 476-3460 Fax: (505) 476-3462

State of New Mexico  
Energy, Minerals & Natural Resources Department  
OIL CONSERVATION DIVISION  
1220 South St. Francis Dr.  
Santa Fe, NM 87505

Form C-102  
Revised August 1, 2011  
Submit one copy to appropriate  
District Office

☐ AMENDED REPORT

WELL LOCATION AND ACREAGE DEDICATION PLAT

<sup>1</sup> API Number <b>30-025-49055</b>		<sup>2</sup> Pool Code <b>96438</b>		<sup>3</sup> Pool Name <b>Hat Mesa, Wolf Camp</b>	
<sup>4</sup> Property Code <b>330652</b>		<sup>5</sup> Property Name <b>PONY EXRESS FED COM</b>			<sup>6</sup> Well Number <b>706H</b>
<sup>7</sup> OGRID No. <b>325830</b>		<sup>8</sup> Operator Name <b>ASCENT ENERGY</b>			<sup>9</sup> Elevation <b>3534.1'</b>

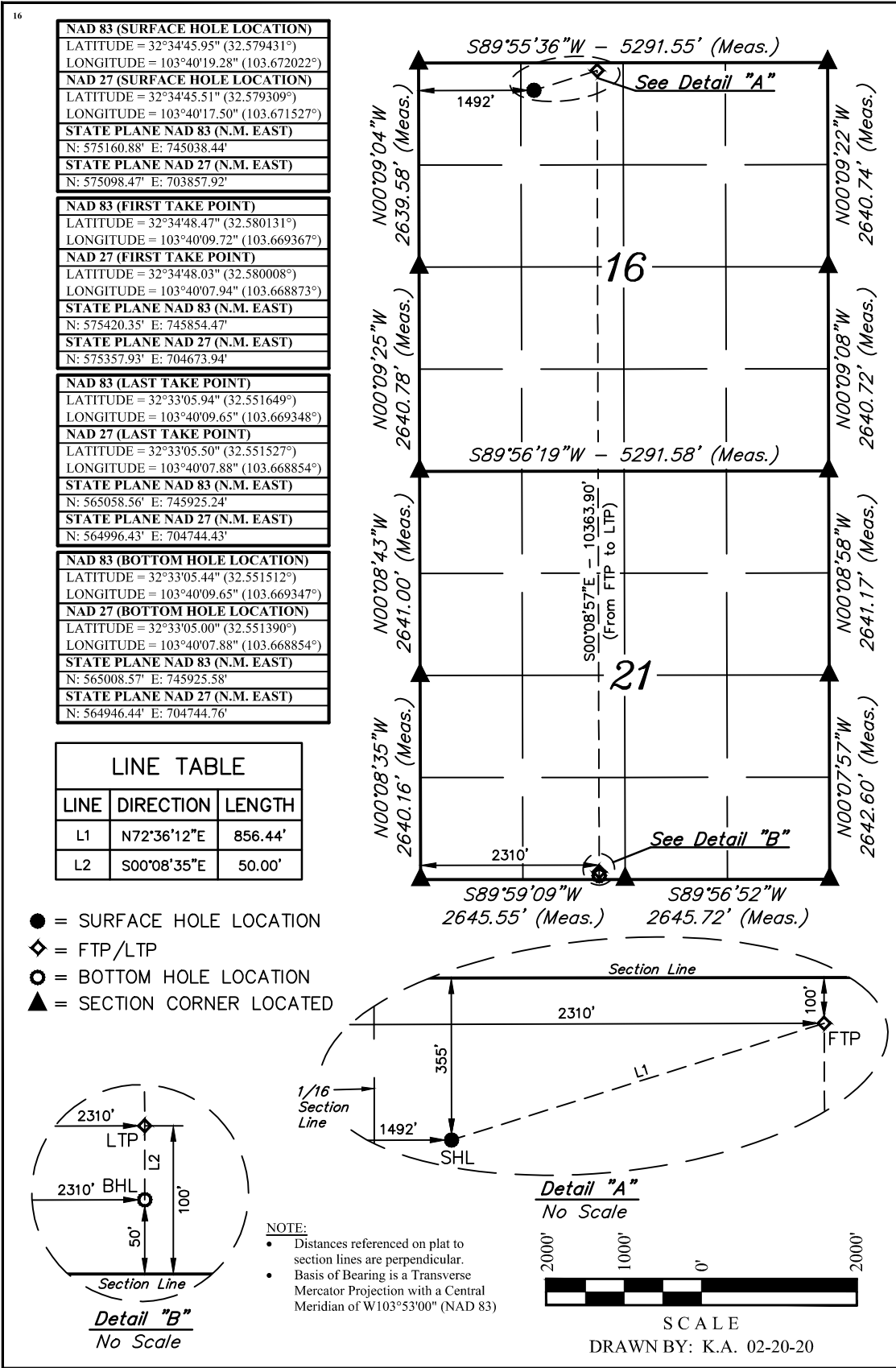
<sup>10</sup> Surface Location

UL or lot no.	Section	Township	Range	Lot Idn	Feet from the	North/South line	Feet from the	East/West line	County
C	16	20S	33E		355	NORTH	1492	WEST	LEA

<sup>11</sup> Bottom Hole Location If Different From Surface

UL or lot no.	Section	Township	Range	Lot Idn	Feet from the	North/South line	Feet from the	East/West line	County
N	21	20S	33E		50	SOUTH	2310	WEST	LEA
<sup>12</sup> Dedicated Acres 320		<sup>13</sup> Joint or Infill		<sup>14</sup> Consolidation Code		<sup>15</sup> Order No.			

No allowable will be assigned to this completion until all interests have been consolidated or a non-standard unit has been approved by the division.



**<sup>17</sup> OPERATOR CERTIFICATION**

I hereby certify that the information contained herein is true and complete to the best of my knowledge and belief, and that this organization either owns a working interest or unleased mineral interest in the land including the proposed bottom hole location or has a right to drill this well at this location pursuant to a contract with an owner of such a mineral or working interest, or to a voluntary pooling agreement or a compulsory pooling order heretofore entered by the division.

Ben Metz 3-31-2020  
Signature Date

Ben Metz  
Printed Name

bmetz@ascentenergy.us  
E-mail Address

**<sup>18</sup> SURVEYOR CERTIFICATION**

I hereby certify that the well location shown on this plat was plotted from field notes of actual surveys made by me or under my supervision, and that the same is true and correct to the best of my belief.

January 21, 2020  
Date of Survey

Signature and Seal of Professional Surveyor:

PAUL BUCHELE  
NEW MEXICO  
23782  
02-20-20  
PROFESSIONAL SURVEYOR

Certificate Number:

District I  
1625 N. French Dr., Hobbs, NM 88240  
District II  
811 S. First St., Artesia, NM 88210  
District III  
1000 Rio Brazos Road, Aztec, NM 87410  
District IV  
1220 S. St. Francis Dr., Santa Fe, NM 87505

State of New Mexico  
Energy, Minerals and Natural Resources Department  
Oil Conservation Division  
1220 South St. Francis Dr.  
Santa Fe, NM 87505

Submit Original  
to Appropriate  
District Office

## GAS CAPTURE PLAN

Date: 4-21-2020

☒ Original

Operator & OGRID No.: Ascent Energy, LLC (325830)

☐ Amended - Reason for Amendment: \_\_\_\_\_

This Gas Capture Plan outlines actions to be taken by the Operator to reduce well/production facility flaring/venting for new completion (new drill, recomple to new zone, re-frac) activity.

*Note: Form C-129 must be submitted and approved prior to exceeding 60 days allowed by Rule (Subsection A of 19.15.18.12 NMAC).*

### Well(s)/Production Facility – Name of facility

The well(s) that will be located at the production facility are shown in the table below.

Well Name	API	Well Location (ULSTR)	Footages	Expected MCF/D	Flared or Vented	Comments
Pony Express Fed Com 303H	03-025	C-16-20S-33E	355' FNL, 1442' FWL	200	~30 days	Flare until well clean, then connect
Pony Express Fed Com 304H	03-025	C-16-20S-33E	355' FNL, 1517' FWL	200	~30 days	Flare until well clean, then connect
Pony Express Fed Com 402H	03-025	C-16-20S-33E	355' FNL, 1467' FWL	200	~30 days	Flare until well clean, then connect
Pony Express Fed Com 502H	03-025	C-16-20S-33E	155' FNL, 1442' FWL	200	~30 days	Flare until well clean, then connect
Pony Express Fed Com 503H	03-025	C-16-20S-33E	155' FNL, 1517' FWL	200	~30 days	Flare until well clean, then connect
Pony Express Fed Com 602H	03-025	C-16-20S-33E	155' FNL, 1467' FWL	200	~30 days	Flare until well clean, then connect
Pony Express Fed Com 702H	03-025	C-16-20S-33E	155' FNL, 1492' FWL	200	~30 days	Flare until well clean, then connect
Pony Express Fed Com 706H	03-025	C-16-20S-33E	355' FNL, 1492' FWL	200	~30 days	Flare until well clean, then connect

### Gathering System and Pipeline Notification

Well(s) will be connected to a production facility after flowback operations are complete, if gas transporter system is in place. The gas produced from the production facility has not yet been dedicated. One possible outlet is 3 Bear Energy. 3Bear has an existing gas pipeline in NW Section 11, T20S R33E. Ascent Energy, LLC and 3Bear Energy have agreements in place to extend the gas pipeline to the Silver & Pony Express drill pads. Ascent Energy, LLC will provide (periodically) to 3Bear a drilling, completion and estimated first production date for wells that are scheduled to be drilled in the foreseeable future. In addition, Ascent Energy, LLC and 3Bear will have periodic conference calls to discuss changes to drilling and completion schedules. Gas from these wells will be processed at 3Bear Processing Plant at a yet to be determined location. The actual flow of the gas will be based on compression operating parameters and gathering system pressures.

### Flowback Strategy

After the fracture treatment/completion operations, well(s) will be produced to temporary production tanks and gas will be flared or vented. During flowback, the fluids and sand content will be monitored. When the produced fluids contain minimal sand, the wells will be turned to production facilities. Gas sales should start as soon as the wells start flowing through the

production facilities, unless there are operational issues on 3Bear system at that time. Based on current information, it is Ascent Energy, LLC's belief the system can take this gas upon completion of the well(s).

Safety requirements during cleanout operations from the use of underbalanced air cleanout systems may necessitate that sand and non-pipeline quality gas be vented and/or flared rather than sold on a temporary basis.

#### **Alternatives to Reduce Flaring**

Below are alternatives considered from a conceptual standpoint to reduce the amount of gas flared.

- Power Generation – On lease
  - Only a portion of gas is consumed operating the generator, remainder of gas will be flared
- Compressed Natural Gas – On lease
  - Gas flared would be minimal, but might be uneconomical to operate when gas volume declines
- NGL Removal – On lease
  - Plants are expensive, residue gas is still flared, and uneconomical to operate when gas volume declines

Ascent Energy, LLC  
 Well Name: Pony Fed Com 706H  
 SHL 355' FNL, 1492' FWL  
 NENW, Section 16, T20S, R33E  
 Lea County, New Mexico

**Onshore Order 1**  
**8 Point Drilling Plan**

**1. Geologic Formations/Estimated Tops**

Formation	Lithology	MD	TVD	Mineral Resources
<b>Upper Permian</b>	Sandstone	0	0	Useable Water
Rustler	Anhydrite	1232	1232	None
Salado	Salt	1572	1572	None
Base Salado Salt	Salt	2827	2827	None
Tansil	Limestone	2852	2852	None
Yates	Carbonates	3029	3027	Natural Gas, Oil, CO2
Capitan Reef	Limestone	3283	3277	Useable Water
Delaware – Mt. Group	Sandstone	5257	5217	Natural Gas, Oil, CO2
Cherry Canyon	Sandstone	5327	5287	Natural Gas, Oil, CO2
Brushy Canyon	Sandstone	6642	6602	Natural Gas, Oil, CO2
Bone Spring	Limestone	8255	8152	Natural Gas, Oil, CO2
Bone Spring - Avalon	Shale	9320	8280	Natural Gas, Oil, CO2
Bone Spring – Leonard B	Limestone, Shale	8727	8687	Natural Gas, Oil, CO2
1 <sup>st</sup> Bone Spring Sandstone	Sandstone	9272	9232	Natural Gas, Oil, CO2
2 <sup>nd</sup> Bone Spring Carbonate	Carbonates	9557	9517	Natural Gas, Oil, CO2
2 <sup>nd</sup> Bone Spring Sandstone	Sandstone	9787	9747	Natural Gas, Oil, CO2
3 <sup>rd</sup> Bone Spring Carbonate	Carbonates	10337	10297	Natural Gas, Oil, CO2
3 <sup>rd</sup> Bone Spring Sandstone	Sandstone	10702	10662	Natural Gas, Oil, CO2
Wolfcamp	Shale	11012	10972	Natural Gas, Oil, CO2
TD	Shale	22029	11967	Natural Gas, Oil, CO2

Notable Zones: WC A the target formation.

Closest water well (CP 00317) is 7860' NW. Depth to water is 325', total depth is 680'.

**2. Blowout Prevention Equipment**

- a. Pressure Rating: 5,000'
- b. Rating Depth: 15,000'
- c. Equipment: A 15,000', 5,000 psi BOP stack consisting of 3 rams with 2 pipe rams, 1 blind ram, and 1 annular preventer will be used below surface casing to TD. See attachments for BOP and choke manifold diagrams. Also present will be an accumulator that meets the requirements of Onshore Order #2 for the pressure rating of the BOP stack. A rotating head will also be installed as needed. BOP will be inspected and operated as recommended in Onshore Order #2. A top drive check valve and sub equipped with a full opening valve sized to fit the drill



Ascent Energy, LLC  
 Well Name: Pony Fed Com 706H  
 SHL 355' FNL, 1492' FWL  
 NENW, Section 16, T20S, R33E  
 Lea County, New Mexico

pipe and collars will be available on the rig floor in the open position. The wellhead will be a multi-bowl speed head.

- d. Testing Procedures: After surface casing is set and the BOP is nipped up, the BOP pressure tests will be made with a third-party tester to 250 psi low, 5000 psi high, and the annular preventer will be tested to 2,500 psi. The BOP will be tested in this manner after nipple-up if any break of the stack occurs as wells as every 30 days.
- e. Requesting Variance:
  - i. Variance is requested to use a co-flex line between the BOP and choke manifold instead of using a 4" O. D. steel line. Choke and kill line data book are attached. If this hose is unavailable, then a hose of equal or higher rating will be used.
  - ii. Variance is requested to use a speed head (aka, multi-bowl wellhead). Diagram is attached. After running the 13.375" surface casing, a 13.625" BOP/BOPE system with a >5000 psi WP will be installed on the wellhead system. It will be pressure tested to 250 psi low, followed by a test to 5000-psi high. Pressure test will be repeated at least every 30 days as required by Onshore Order 2.
  - iii. Ascent requests a variance to run a multi-bowl speed head for setting the Intermediate 1, Intermediate 2, and Production Strings. Speed head will be installed by the vendor's representative(s). Well head welding will be monitored by the vendor's representative.

### 3. Casing

Interval	Hole Size	Interval MD	Interval TVD	Csg OD	Weight	Grade	Conn Type	Conn	New/ Used	DF Collapse	DF Burst	DF Tension
Surface	24	0' 1,257'	0' 1,257'	20	133.0	J-55	BTC	API	New	2.39	4.13	5.17
1st Int	17.5	0' 2,953'	0' 2,952'	13.375	68.0	J-55	STC	API	New	1.27	1.98	2.24
2nd Int	12.25	0' 5,257'	0' 5,217'	9.625	40.0	J-55	LTC	API	New	1.81	1.28	1.95
3rd int	8.75	0' 11,012'	0' 10,972'	7.625	29.7	HCP-110	EZGO HT	Non-API	New	1.48	1.46	1.33
Production	6.75	0' 22,029'	0' 11,967'	5.5	20.0	HCP-110	EZGO HT	Non-API	New	2.12	1.34	1.47

\*Casing Assumption Worksheet to be attached

Variance:

- A variance is requested to waive centralizer requirements for the 7.625" casing. An expansion additive will be used in the cement slurry for the entire length of the 8.75" hole to maximize cement bond and zone isolation.
- Variance is also requested to waive centralizers requirements for the 5.5 " casing. An expansion additive will be used in the cement slurry for the entire length of the 6.75" hole to maximize cement bond and zone isolation.



Ascent Energy, LLC  
 Well Name: Pony Fed Com 706H  
 SHL 355' FNL, 1492' FWL  
 NENW, Section 16, T20S, R33E  
 Lea County, New Mexico

#### 4. Cement

Section	Depth	Type	Cmt Top	Excess	Ft <sup>3</sup>	Sacks	BBLS	Wt. ppg	Yld Ft <sup>3</sup> /sk	Slurry Description
Surface	20	Lead	0	100%	1,396	810	249	14	1.728	Class C
	1257'	Tail	757'	100%	960	780	171	15	1.332	Class C
1st Int	13.375	Lead	0	250%	2,871	1240	511	13	2.32	Class C
	2953'	Tail	1953'	50%	1,042	810	186	15	1.33	Class C
2nd Int (1st Stg)	9.625	Lead	3003	200%	896	410	160	13	2.2	Class C
	5257'	Tail	3957'	25%	509	400	91	15	1.33	Class C
2nd Int (2nd Stg)	9.625	Lead	0	10%	559	245	100	13	2.32	Class C
	5257'	Tail	1703'	10%	448	350	80	15	1.33	Class C
3rd Int	7.625	Lead	0'	100%	573	325	102	12	1.78	50/50 Poz H
	11012'	Tail	5267'	50%	866	770	154	15	1.14	25/75 Poz H
Production	5.5	Lead	0	10%	837	340	149	11	2.48	TXI Nine Lite Cement
	22,029'	Tail	9,000'	25%	1,360	930	242	13	1.472	35/65 Poz H

**Note:** Int 2 is two stage cement job. **DVT to be placed @ approximately 3003'**. 50ft from previous casing shoe and will be adjusted real time

#### 5. Circulating Medium (Mud Program)

- Mud System Type: Closed loop
- Air/Gas Drilling: No
- What will be on location to control well or mitigate other conditions: All necessary additives (e.g., barite, bentonite, LCM) to maintain mud properties and meet minimum lost circulation and weight increase needs will be on site at all times. Mud program may change due to hole conditions.
- Describe the mud monitoring system: Electronic Pason mud monitor system complying with Onshore Order 1 will be used. All necessary mud products (e. g., barite, cedar bark) for weight addition and fluid loss control will always be on site. Mud program is subject to change due to hole conditions. A closed loop system will be used.

Interval		Type	Weight	Viscosity	Water Loss
0'	1,257'	Fresh Water	8.4-9.6	34-38	N/C
1,257'	2,953'	Brine Water	10	28-34	N/C
2,953'	5,257'	Fresh Water	8.4-8.6	28-34	N/C
5,257'	11,012'	OBM	8.8-9.2	28-34	N/C
11,012'	22,029'	OBM	10-10.5	40-45	N/C

#### 6. Test, Logging & Coring

- List of production tests including testing procedures, equipment and safety measures: GR will be collected while drilling through the MWD tools from 9.625"





Ascent Energy, LLC  
Well Name: Pony Fed Com 706H  
SHL 355' FNL, 1492' FWL  
NENW, Section 16, T20S, R33E  
Lea County, New Mexico

casing shoe to TD. A 2-person mud logging program will be used from 9.625" casing shoe to TD.

- b. Open/cased hole logs run in the well: No open hole logs
- c. Coring operations description for the well: No core, drill stem test, or open hole log is planned.

## **7. Anticipated Pressure**

- a. Anticipated bottom hole pressure: Maximum expected bottom hole pressure is 6534 psi.
- b. Anticipated bottom hole temperature: Expected bottom hole temperature is 177° F.
- c. Abnormal pressures, temperatures, or potential geologic hazards: No abnormal pressure or temperature is expected.
- d. Hydrogen sulfide drilling operations plan required: Yes
  - i. H<sub>2</sub>S monitoring and detection equipment will be used from surface casing point to TD.
  - ii. Ascent does not anticipate that there will be enough H<sub>2</sub>S from the surface to the Bone Spring formations to meet the BLM's Onshore Order 6 requirements for the submission of an "H<sub>2</sub>S Drilling Operation Plan" or "Public Protection Plan" for drilling and completing this well. Ascent has an H<sub>2</sub>S safety package on all wells and an "H<sub>2</sub>S Drilling Operations Plan" is attached. Adequate flare lines will be installed off the mud/gas separator where gas may be safely flared. All personnel will be familiar with all aspects of safe operation of equipment being used.

## **8. Other Information**

- a. Anticipated spud date is upon approval. It is expected it will take 3 months to drill and complete the well.
- b. Ascent requests approval to possibly utilize a spudder rig to drill and set casing for the surface interval on this well. The spudder rig will be possibly utilized in order to reduce cost and save time. The wellhead will be installed and tested as soon as the surface casing is cut off per the existing COAs. A blind flange with the same pressure rating as the wellhead will be installed on the well. Once the spudder rig is removed, Ascent will secure the wellhead area by placing a guard rail around the cellar. Pressure will be monitored and a means for intervention will be maintained while the drilling rig is not over the well. Spudder rig operations are expected to take 2-3 days per well. Three wells on the pad will have surface casing set by the spudder rig as a part of this operation. The BLM will be notified 24 hours prior to commencing spudder rig operations. Within 90 days of the departure of the spudder rig, drilling operations will recommence on these wells. This rig will have a BOP stack equal or greater to the pressure rating





Ascent Energy, LLC  
Well Name: Pony Fed Com 706H  
SHL 355' FNL, 1492' FWL  
NENW, Section 16, T20S, R33E  
Lea County, New Mexico

required in the COAs. The BLM will be notified 24 hours before the larger rig moves on the pre-set wells. Ascent will have supervision on the spudder rig to ensure compliance with all BLM and NMOCD regulations.

- c. Ascent requests a variance to have the option of batch drilling this well with other wells on the same pad. In the event the wells are batch drilled, after drilling surface, 1<sup>st</sup> intermediate, and 2<sup>nd</sup> intermediate hole sections and cementing 2<sup>nd</sup> intermediate casing, a 10M dry hole cap with bleed off valve will be installed. The rig will then walk to another well on the pad. When the rig returns to this well and BOPs are installed, the operator will perform a full BOP test. Pipe rams will be operationally checked each 24-hour period. Blind rams will be operationally checked on each trip out of the hole. These checks will be noted on the daily tour sheets. A hydraulically operated choke will be installed prior to drilling out of the intermediate casing shoe.

#### **9. Lessee's or Operator's Representative**

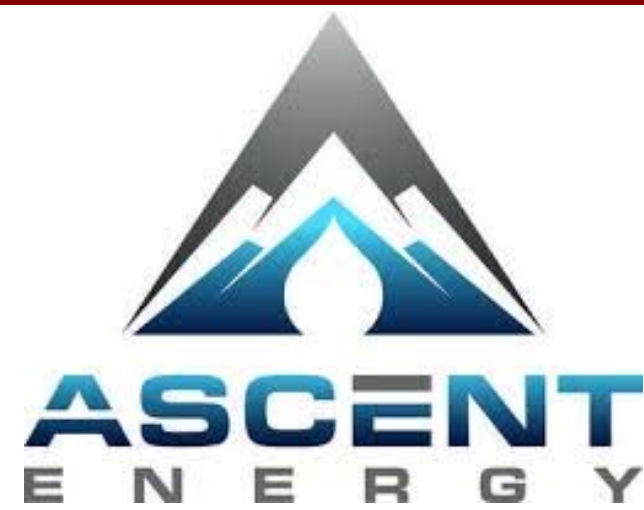
##### **Permit Matters**

UELS, LLC  
85 S 200 E  
Vernal, UT 84078  
Amy Doebele- Permit Agent  
435-789-1017  
adoebele@uintahgroup.com

##### **Drilling, Completions, Production & Operational Matters**

Ascent Energy, LLC  
1125 17<sup>th</sup> St., Suite 410  
Denver, CO 80202  
Gema Volek- Drilling Manager  
785-312-2092  
gvolek@ascentenergy.us



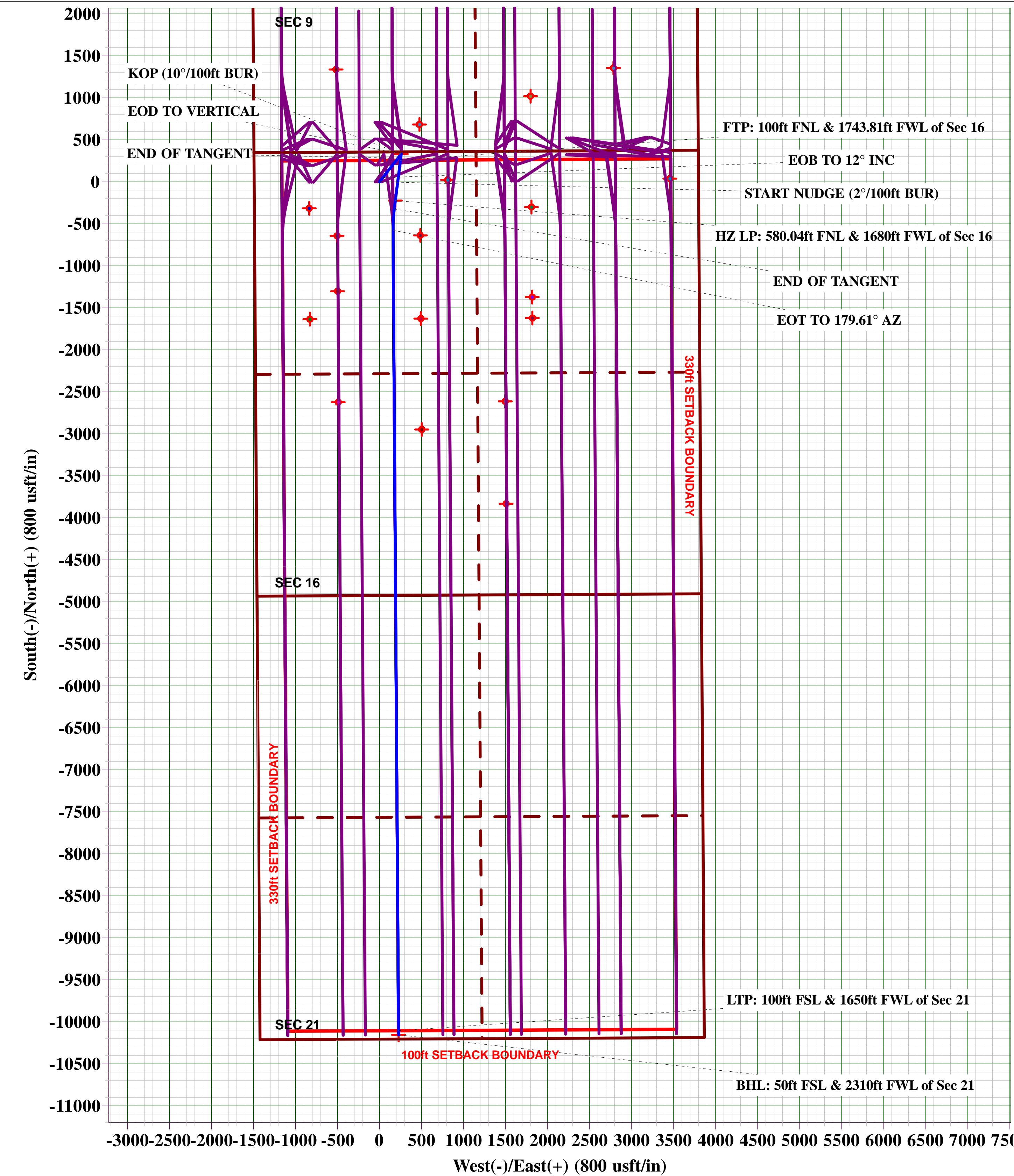
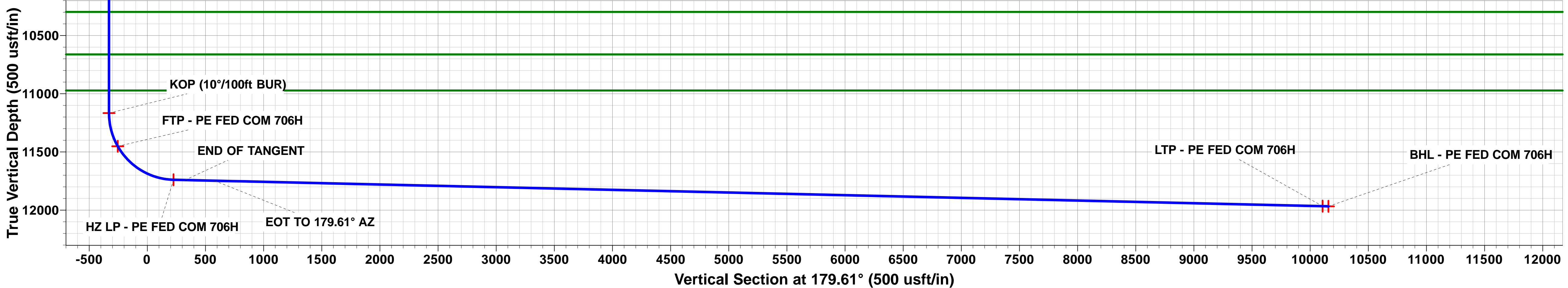
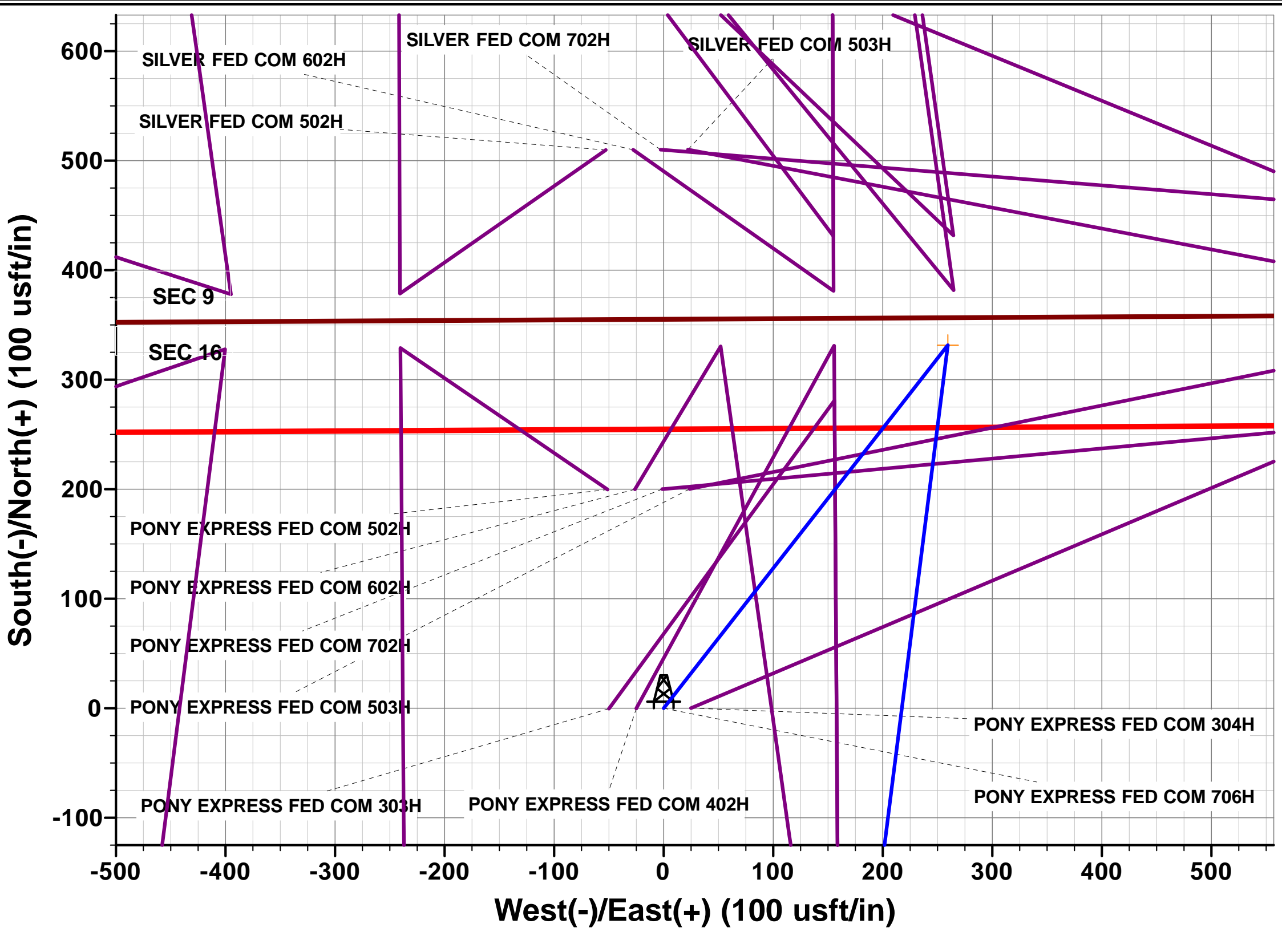
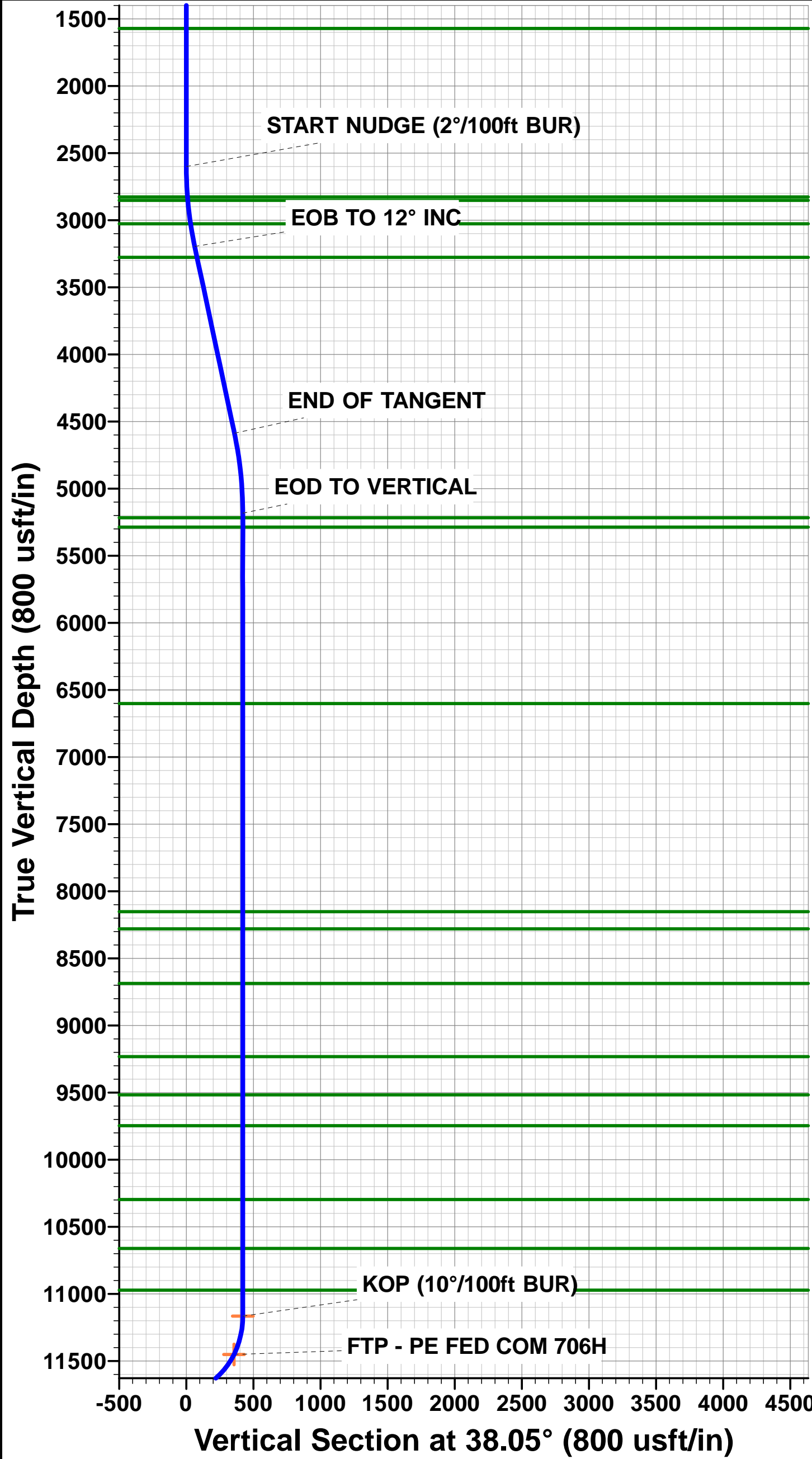


Project: LEA COUNTY, NEW MEXICO (NAD 83) (GRID)  
Site: SEC. 16 T20S R33E N.M.P.M. (GRID)  
Well: PONY EXPRESS FED COM 706H  
Wellbore: ORIGINAL WELLBORE  
Design: PROPOSAL #1

ANNOTATIONS								
MD	Inc	Azi	TVD	+N/-S	+E/-W	VSect	Departure	Annotation
0.00	0.00	0.00	0.00	0.00	0.00	0.00	0.00	SHL: 355ft FNL & 1492ft FWL of Sec 16
2600.00	0.00	0.00	2600.00	0.00	0.00	0.00	0.00	START NUDGE (2°/100ft BUR)
3200.00	12.00	38.05	3195.62	49.30	38.58	-49.04	62.60	EOB TO 12° INC
4622.92	12.00	38.05	4587.45	282.28	220.91	-280.77	358.44	END OF TANGENT
5222.92	0.00	0.00	5183.07	331.58	259.49	-329.81	421.05	EOD TO VERTICAL
11206.04	0.00	0.00	11166.19	331.58	259.49	-329.81	421.05	KOP (10°/100ft BUR)
11504.48	29.84	187.22	11451.32	256.20	249.94	-254.49	497.18	FTP: 100ft FNL & 1743.81ft FWL of Sec 16
12092.94	88.69	187.22	11739.00	-223.84	189.13	225.12	980.91	HZ LP: 580.04ft FNL & 1680ft FWL of Sec 16
12192.94	88.69	187.22	11741.28	-323.02	176.56	324.22	1080.88	END OF TANGENT
12446.67	88.69	179.61	11747.10	-576.05	161.47	577.14	1334.54	EOT TO 179.61° AZ
21978.93	88.69	179.61	11965.85	-10105.57	227.00	10106.89	10864.29	LTP: 100ft FSL & 1650ft FWL of Sec 21
22028.94	88.69	179.61	11967.00	-10155.57	227.34	10156.88	10914.29	BHL: 50ft FSL & 1650ft FWL of Sec 21

PROPOSED LOCAL COORDINATES:  
  
SHL: 355ft FNL & 1492ft FWL of Sec 16  
  
FTP: 100ft FNL & 1743.81ft FWL of Sec 16  
  
HZ LP: 580.04ft FNL & 1680ft FWL of Sec 16  
  
LTP: 100ft FSL & 1650ft FWL of Sec 21  
  
BHL: 50ft FSL & 1650ft FWL of Sec 21

WELLBORE TARGET DETAILS (LAT/LONG)					
Name	TVD	+N/-S	+E/-W	Latitude	Longitude
KOP - PE FED COM 706H	11166.19	331.58	259.49	32.580338	-103.671173
FTP - PE FED COM 706H	11451.31	256.20	249.94	32.580131	-103.671205
HZ LP - PE FED COM 706H	11739.00	-223.84	189.13	32.578813	-103.671413
LTP - PE FED COM 706H	11965.85	-10105.57	227.00	32.551652	-103.671489
BHL - PE FED COM 706H	11967.00	-10155.57	227.34	32.551515	-103.671489



## Planning Report

<b>Database:</b>	Database 1	<b>Local Co-ordinate Reference:</b>	Well PONY EXPRESS FED COM 706H
<b>Company:</b>	ASCENT ENERGY	<b>TVD Reference:</b>	KB 25' @ 3557.00usft
<b>Project:</b>	LEA COUNTY, NEW MEXICO (NAD 83) (GRID)	<b>MD Reference:</b>	KB 25' @ 3557.00usft
<b>Site:</b>	SEC. 16 T20S R33E N.M.P.M. (GRID)	<b>North Reference:</b>	Grid
<b>Well:</b>	PONY EXPRESS FED COM 706H	<b>Survey Calculation Method:</b>	Minimum Curvature
<b>Wellbore:</b>	ORIGINAL WELLBORE		
<b>Design:</b>	PROPOSAL #1		

<b>Project</b>	LEA COUNTY, NEW MEXICO (NAD 83) (GRID)		
<b>Map System:</b>	US State Plane 1983	<b>System Datum:</b>	Mean Sea Level
<b>Geo Datum:</b>	North American Datum 1983		
<b>Map Zone:</b>	New Mexico Eastern Zone		Using geodetic scale factor

Site		SEC. 16 T20S R33E N.M.P.M. (GRID)			
Site Position:		Northing:	575,356.07 usft	Latitude:	32.579983
From:	Map	Easting:	744,175.82 usft	Longitude:	-103.674818
Position Uncertainty:	0.00 usft	Slot Radius:	1.10 ft	Grid Convergence:	0.35 °

Well		PONY EXPRESS FED COM 706H				
Well Position	+N/-S	-195.36 usft	Northing:	575,160.72 usft	Latitude:	32.579431
	+E/-W	862.59 usft	Easting:	745,038.37 usft	Longitude:	-103.672022
Position Uncertainty		0.00 usft	Wellhead Elevation:	usft	Ground Level:	3,532.00 usft

<b>Wellbore</b>	ORIGINAL WELLBORE				
<b>Magnetics</b>	<b>Model Name</b>	<b>Sample Date</b>	<b>Declination (°)</b>	<b>Dip Angle (°)</b>	<b>Field Strength (nT)</b>
	IGRF2020	2020-03-19	6.76	60.25	47,822.50310553

<b>Design</b>	PROPOSAL #1				
<b>Audit Notes:</b>					
<b>Version:</b>	<b>Phase:</b>	PROTOTYPE	<b>Tie On Depth:</b>	0.00	
<b>Vertical Section:</b>	<b>Depth From (TVD) (usft)</b>	<b>+N/-S (usft)</b>	<b>+E/-W (usft)</b>	<b>Direction (°)</b>	
	0.00	0.00	0.00	179.61	

<b>Plan Sections</b>											
MD (usft)	Inc (°)	Azi (°)	Vertical Depth	SS (usft)	+N/-S (usft)	+E/-W (usft)	Dogleg Rate (°/100usft)	Build Rate (°/100usft)	Turn Rate (°/100usft)	TFO (°)	Target
0.00	0.00	0.00	0.00	-3,557.00	0.00	0.00	0.00	0.00	0.00	0.00	
2,600.00	0.00	0.00	2,600.00	-957.00	0.00	0.00	0.00	0.00	0.00	0.00	
3,200.00	12.00	38.05	3,195.62	-361.38	49.30	38.58	2.00	2.00	0.00	38.05	
4,622.92	12.00	38.05	4,587.45	1,030.45	282.28	220.91	0.00	0.00	0.00	0.00	
5,222.92	0.00	0.00	5,183.07	1,626.07	331.58	259.49	2.00	-2.00	0.00	180.00	
11,206.04	0.00	0.00	11,166.19	7,609.19	331.58	259.49	0.00	0.00	0.00	0.00	KOP - PE FED COI
12,092.94	88.69	187.22	11,739.00	8,182.00	-223.84	189.13	10.00	10.00	0.00	187.22	
12,192.94	88.69	187.22	11,741.28	8,184.28	-323.02	176.56	0.00	0.00	0.00	0.00	
12,446.67	88.69	179.61	11,747.10	8,190.10	-576.05	161.47	3.00	0.00	-3.00	-90.12	
22,028.94	88.69	179.61	11,967.00	8,410.00	-10,155.57	227.34	0.00	0.00	0.00	0.00	BHL - PE FED COM



## Planning Report

<b>Database:</b>	Database 1	<b>Local Co-ordinate Reference:</b>	Well PONY EXPRESS FED COM 706H
<b>Company:</b>	ASCENT ENERGY	<b>TVD Reference:</b>	KB 25' @ 3557.00usft
<b>Project:</b>	LEA COUNTY, NEW MEXICO (NAD 83) (GRID)	<b>MD Reference:</b>	KB 25' @ 3557.00usft
<b>Site:</b>	SEC. 16 T20S R33E N.M.P.M. (GRID)	<b>North Reference:</b>	Grid
<b>Well:</b>	PONY EXPRESS FED COM 706H	<b>Survey Calculation Method:</b>	Minimum Curvature
<b>Wellbore:</b>	ORIGINAL WELLBORE		
<b>Design:</b>	PROPOSAL #1		

## Planned Survey

MD (usft)	Inc (°)	Azi (°)	TVD (usft)	SS (usft)	+N/-S (usft)	+E/-W (usft)	Vertical Section (usft)	Dogleg Rate (°/100usft)	Build Rate (°/100usft)	Turn Rate (°/100usft)
<b>SHL: 355ft FNL &amp; 1492ft FWL of Sec 16</b>										
0.00	0.00	0.00	0.00	3,557.00	0.00	0.00	0.00	0.00	0.00	0.00
100.00	0.00	0.00	100.00	3,457.00	0.00	0.00	0.00	0.00	0.00	0.00
200.00	0.00	0.00	200.00	3,357.00	0.00	0.00	0.00	0.00	0.00	0.00
300.00	0.00	0.00	300.00	3,257.00	0.00	0.00	0.00	0.00	0.00	0.00
400.00	0.00	0.00	400.00	3,157.00	0.00	0.00	0.00	0.00	0.00	0.00
500.00	0.00	0.00	500.00	3,057.00	0.00	0.00	0.00	0.00	0.00	0.00
600.00	0.00	0.00	600.00	2,957.00	0.00	0.00	0.00	0.00	0.00	0.00
700.00	0.00	0.00	700.00	2,857.00	0.00	0.00	0.00	0.00	0.00	0.00
800.00	0.00	0.00	800.00	2,757.00	0.00	0.00	0.00	0.00	0.00	0.00
900.00	0.00	0.00	900.00	2,657.00	0.00	0.00	0.00	0.00	0.00	0.00
1,000.00	0.00	0.00	1,000.00	2,557.00	0.00	0.00	0.00	0.00	0.00	0.00
1,100.00	0.00	0.00	1,100.00	2,457.00	0.00	0.00	0.00	0.00	0.00	0.00
1,200.00	0.00	0.00	1,200.00	2,357.00	0.00	0.00	0.00	0.00	0.00	0.00
<b>RSTLR</b>										
1,232.00	0.00	0.00	1,232.00	2,325.00	0.00	0.00	0.00	0.00	0.00	0.00
1,300.00	0.00	0.00	1,300.00	2,257.00	0.00	0.00	0.00	0.00	0.00	0.00
1,400.00	0.00	0.00	1,400.00	2,157.00	0.00	0.00	0.00	0.00	0.00	0.00
1,500.00	0.00	0.00	1,500.00	2,057.00	0.00	0.00	0.00	0.00	0.00	0.00
<b>SALDO</b>										
1,572.00	0.00	0.00	1,572.00	1,985.00	0.00	0.00	0.00	0.00	0.00	0.00
1,600.00	0.00	0.00	1,600.00	1,957.00	0.00	0.00	0.00	0.00	0.00	0.00
1,700.00	0.00	0.00	1,700.00	1,857.00	0.00	0.00	0.00	0.00	0.00	0.00
1,800.00	0.00	0.00	1,800.00	1,757.00	0.00	0.00	0.00	0.00	0.00	0.00
1,900.00	0.00	0.00	1,900.00	1,657.00	0.00	0.00	0.00	0.00	0.00	0.00
2,000.00	0.00	0.00	2,000.00	1,557.00	0.00	0.00	0.00	0.00	0.00	0.00
2,100.00	0.00	0.00	2,100.00	1,457.00	0.00	0.00	0.00	0.00	0.00	0.00
2,200.00	0.00	0.00	2,200.00	1,357.00	0.00	0.00	0.00	0.00	0.00	0.00
2,300.00	0.00	0.00	2,300.00	1,257.00	0.00	0.00	0.00	0.00	0.00	0.00
2,400.00	0.00	0.00	2,400.00	1,157.00	0.00	0.00	0.00	0.00	0.00	0.00
2,500.00	0.00	0.00	2,500.00	1,057.00	0.00	0.00	0.00	0.00	0.00	0.00
<b>START NUDGE (2°/100ft BUR)</b>										
2,600.00	0.00	0.00	2,600.00	957.00	0.00	0.00	0.00	0.00	0.00	0.00
2,700.00	2.00	38.05	2,699.98	857.02	1.37	1.08	-1.37	2.00	2.00	0.00
2,800.00	4.00	38.05	2,799.84	757.16	5.50	4.30	-5.47	2.00	2.00	0.00
<b>BASE SALADO SALTS</b>										
2,827.24	4.54	38.05	2,827.00	730.00	7.09	5.55	-7.06	2.00	2.00	0.00
<b>TANSIL</b>										
2,852.33	5.05	38.05	2,852.00	705.00	8.75	6.84	-8.70	2.00	2.00	0.00
2,900.00	6.00	38.05	2,899.45	657.55	12.36	9.67	-12.29	2.00	2.00	0.00
3,000.00	8.00	38.05	2,998.70	558.30	21.96	17.18	-21.84	2.00	2.00	0.00
<b>YATES</b>										
3,028.60	8.57	38.05	3,027.00	530.00	25.20	19.72	-25.07	2.00	2.00	0.00
3,100.00	10.00	38.05	3,097.47	459.53	34.27	26.82	-34.09	2.00	2.00	0.00
<b>EOB TO 12° INC</b>										
3,200.00	12.00	38.05	3,195.62	361.38	49.30	38.58	-49.04	2.00	2.00	0.00
<b>CAPITAN REEF TOP</b>										
3,283.19	12.00	38.05	3,277.00	280.00	62.92	49.24	-62.59	0.00	0.00	0.00
3,300.00	12.00	38.05	3,293.44	263.56	65.67	51.40	-65.32	0.00	0.00	0.00
3,400.00	12.00	38.05	3,391.25	165.75	82.05	64.21	-81.61	0.00	0.00	0.00
3,500.00	12.00	38.05	3,489.07	67.93	98.42	77.02	-97.89	0.00	0.00	0.00
3,600.00	12.00	38.05	3,586.88	-29.88	114.79	89.84	-114.18	0.00	0.00	0.00

## Planning Report

<b>Database:</b>	Database 1	<b>Local Co-ordinate Reference:</b>	Well PONY EXPRESS FED COM 706H
<b>Company:</b>	ASCENT ENERGY	<b>TVD Reference:</b>	KB 25' @ 3557.00usft
<b>Project:</b>	LEA COUNTY, NEW MEXICO (NAD 83) (GRID)	<b>MD Reference:</b>	KB 25' @ 3557.00usft
<b>Site:</b>	SEC. 16 T20S R33E N.M.P.M. (GRID)	<b>North Reference:</b>	Grid
<b>Well:</b>	PONY EXPRESS FED COM 706H	<b>Survey Calculation Method:</b>	Minimum Curvature
<b>Wellbore:</b>	ORIGINAL WELLBORE		
<b>Design:</b>	PROPOSAL #1		

## Planned Survey

MD (usft)	Inc (°)	Azi (°)	TVD (usft)	SS (usft)	+N/-S (usft)	+E/-W (usft)	Vertical Section (usft)	Dogleg Rate (°/100usft)	Build Rate (°/100usft)	Turn Rate (°/100usft)
3,700.00	12.00	38.05	3,684.70	-127.70	131.17	102.65	-130.47	0.00	0.00	0.00
3,800.00	12.00	38.05	3,782.51	-225.51	147.54	115.46	-146.75	0.00	0.00	0.00
3,900.00	12.00	38.05	3,880.33	-323.33	163.91	128.28	-163.04	0.00	0.00	0.00
4,000.00	12.00	38.05	3,978.14	-421.14	180.29	141.09	-179.32	0.00	0.00	0.00
4,100.00	12.00	38.05	4,075.96	-518.96	196.66	153.90	-195.61	0.00	0.00	0.00
4,200.00	12.00	38.05	4,173.77	-616.77	213.03	166.72	-211.89	0.00	0.00	0.00
4,300.00	12.00	38.05	4,271.59	-714.59	229.41	179.53	-228.18	0.00	0.00	0.00
4,400.00	12.00	38.05	4,369.40	-812.40	245.78	192.34	-244.47	0.00	0.00	0.00
4,500.00	12.00	38.05	4,467.22	-910.22	262.15	205.16	-260.75	0.00	0.00	0.00
4,600.00	12.00	38.05	4,565.03	-1,008.03	278.53	217.97	-277.04	0.00	0.00	0.00
<b>END OF TANGENT</b>										
<b>4,622.92</b>	<b>12.00</b>	<b>38.05</b>	<b>4,587.45</b>	<b>-1,030.45</b>	<b>282.28</b>	<b>220.91</b>	<b>-280.77</b>	<b>0.00</b>	<b>0.00</b>	<b>0.00</b>
4,700.00	10.46	38.05	4,663.05	-1,106.05	294.10	230.16	-292.53	2.00	-2.00	0.00
4,800.00	8.46	38.05	4,761.69	-1,204.69	307.04	240.29	-305.40	2.00	-2.00	0.00
4,900.00	6.46	38.05	4,860.84	-1,303.84	317.26	248.29	-315.57	2.00	-2.00	0.00
5,000.00	4.46	38.05	4,960.38	-1,403.38	324.75	254.15	-323.02	2.00	-2.00	0.00
5,100.00	2.46	38.05	5,060.19	-1,503.19	329.50	257.87	-327.74	2.00	-2.00	0.00
5,200.00	0.46	38.05	5,160.15	-1,603.15	331.51	259.43	-329.73	2.00	-2.00	0.00
<b>EOD TO VERTICAL</b>										
<b>5,222.92</b>	<b>0.00</b>	<b>0.00</b>	<b>5,183.07</b>	<b>-1,626.07</b>	<b>331.58</b>	<b>259.49</b>	<b>-329.81</b>	<b>2.00</b>	<b>-2.00</b>	<b>0.00</b>
<b>TOP DELAWARE SAND</b>										
<b>5,256.85</b>	<b>0.00</b>	<b>0.00</b>	<b>5,217.00</b>	<b>-1,660.00</b>	<b>331.58</b>	<b>259.49</b>	<b>-329.81</b>	<b>0.00</b>	<b>0.00</b>	<b>0.00</b>
5,300.00	0.00	0.00	5,260.15	-1,703.15	331.58	259.49	-329.81	0.00	0.00	0.00
<b>CHERRY CANYON</b>										
<b>5,326.85</b>	<b>0.00</b>	<b>0.00</b>	<b>5,287.00</b>	<b>-1,730.00</b>	<b>331.58</b>	<b>259.49</b>	<b>-329.81</b>	<b>0.00</b>	<b>0.00</b>	<b>0.00</b>
5,400.00	0.00	0.00	5,360.15	-1,803.15	331.58	259.49	-329.81	0.00	0.00	0.00
5,500.00	0.00	0.00	5,460.15	-1,903.15	331.58	259.49	-329.81	0.00	0.00	0.00
5,600.00	0.00	0.00	5,560.15	-2,003.15	331.58	259.49	-329.81	0.00	0.00	0.00
5,700.00	0.00	0.00	5,660.15	-2,103.15	331.58	259.49	-329.81	0.00	0.00	0.00
5,800.00	0.00	0.00	5,760.15	-2,203.15	331.58	259.49	-329.81	0.00	0.00	0.00
5,900.00	0.00	0.00	5,860.15	-2,303.15	331.58	259.49	-329.81	0.00	0.00	0.00
6,000.00	0.00	0.00	5,960.15	-2,403.15	331.58	259.49	-329.81	0.00	0.00	0.00
6,100.00	0.00	0.00	6,060.15	-2,503.15	331.58	259.49	-329.81	0.00	0.00	0.00
6,200.00	0.00	0.00	6,160.15	-2,603.15	331.58	259.49	-329.81	0.00	0.00	0.00
6,300.00	0.00	0.00	6,260.15	-2,703.15	331.58	259.49	-329.81	0.00	0.00	0.00
6,400.00	0.00	0.00	6,360.15	-2,803.15	331.58	259.49	-329.81	0.00	0.00	0.00
6,500.00	0.00	0.00	6,460.15	-2,903.15	331.58	259.49	-329.81	0.00	0.00	0.00
6,600.00	0.00	0.00	6,560.15	-3,003.15	331.58	259.49	-329.81	0.00	0.00	0.00
<b>BRUSHY CANYON</b>										
<b>6,641.85</b>	<b>0.00</b>	<b>0.00</b>	<b>6,602.00</b>	<b>-3,045.00</b>	<b>331.58</b>	<b>259.49</b>	<b>-329.81</b>	<b>0.00</b>	<b>0.00</b>	<b>0.00</b>
6,700.00	0.00	0.00	6,660.15	-3,103.15	331.58	259.49	-329.81	0.00	0.00	0.00
6,800.00	0.00	0.00	6,760.15	-3,203.15	331.58	259.49	-329.81	0.00	0.00	0.00
6,900.00	0.00	0.00	6,860.15	-3,303.15	331.58	259.49	-329.81	0.00	0.00	0.00
7,000.00	0.00	0.00	6,960.15	-3,403.15	331.58	259.49	-329.81	0.00	0.00	0.00
7,100.00	0.00	0.00	7,060.15	-3,503.15	331.58	259.49	-329.81	0.00	0.00	0.00
7,200.00	0.00	0.00	7,160.15	-3,603.15	331.58	259.49	-329.81	0.00	0.00	0.00
7,300.00	0.00	0.00	7,260.15	-3,703.15	331.58	259.49	-329.81	0.00	0.00	0.00
7,400.00	0.00	0.00	7,360.15	-3,803.15	331.58	259.49	-329.81	0.00	0.00	0.00
7,500.00	0.00	0.00	7,460.15	-3,903.15	331.58	259.49	-329.81	0.00	0.00	0.00
7,600.00	0.00	0.00	7,560.15	-4,003.15	331.58	259.49	-329.81	0.00	0.00	0.00
7,700.00	0.00	0.00	7,660.15	-4,103.15	331.58	259.49	-329.81	0.00	0.00	0.00
7,800.00	0.00	0.00	7,760.15	-4,203.15	331.58	259.49	-329.81	0.00	0.00	0.00

## Planning Report

<b>Database:</b>	Database 1	<b>Local Co-ordinate Reference:</b>	Well PONY EXPRESS FED COM 706H
<b>Company:</b>	ASCENT ENERGY	<b>TVD Reference:</b>	KB 25' @ 3557.00usft
<b>Project:</b>	LEA COUNTY, NEW MEXICO (NAD 83) (GRID)	<b>MD Reference:</b>	KB 25' @ 3557.00usft
<b>Site:</b>	SEC. 16 T20S R33E N.M.P.M. (GRID)	<b>North Reference:</b>	Grid
<b>Well:</b>	PONY EXPRESS FED COM 706H	<b>Survey Calculation Method:</b>	Minimum Curvature
<b>Wellbore:</b>	ORIGINAL WELLBORE		
<b>Design:</b>	PROPOSAL #1		

## Planned Survey

MD (usft)	Inc (°)	Azi (°)	TVD (usft)	SS (usft)	+N/-S (usft)	+E/-W (usft)	Vertical Section (usft)	Dogleg Rate (°/100usft)	Build Rate (°/100usft)	Turn Rate (°/100usft)
7,900.00	0.00	0.00	7,860.15	-4,303.15	331.58	259.49	-329.81	0.00	0.00	0.00
8,000.00	0.00	0.00	7,960.15	-4,403.15	331.58	259.49	-329.81	0.00	0.00	0.00
8,100.00	0.00	0.00	8,060.15	-4,503.15	331.58	259.49	-329.81	0.00	0.00	0.00
<b>BSPG_LIME</b>										
8,191.85	0.00	0.00	8,152.00	-4,595.00	331.58	259.49	-329.81	0.00	0.00	0.00
8,200.00	0.00	0.00	8,160.15	-4,603.15	331.58	259.49	-329.81	0.00	0.00	0.00
8,300.00	0.00	0.00	8,260.15	-4,703.15	331.58	259.49	-329.81	0.00	0.00	0.00
<b>AVLN</b>										
8,319.85	0.00	0.00	8,280.00	-4,723.00	331.58	259.49	-329.81	0.00	0.00	0.00
8,400.00	0.00	0.00	8,360.15	-4,803.15	331.58	259.49	-329.81	0.00	0.00	0.00
8,500.00	0.00	0.00	8,460.15	-4,903.15	331.58	259.49	-329.81	0.00	0.00	0.00
8,600.00	0.00	0.00	8,560.15	-5,003.15	331.58	259.49	-329.81	0.00	0.00	0.00
8,700.00	0.00	0.00	8,660.15	-5,103.15	331.58	259.49	-329.81	0.00	0.00	0.00
<b>LEONARD_B</b>										
8,726.85	0.00	0.00	8,687.00	-5,130.00	331.58	259.49	-329.81	0.00	0.00	0.00
8,800.00	0.00	0.00	8,760.15	-5,203.15	331.58	259.49	-329.81	0.00	0.00	0.00
8,900.00	0.00	0.00	8,860.15	-5,303.15	331.58	259.49	-329.81	0.00	0.00	0.00
9,000.00	0.00	0.00	8,960.15	-5,403.15	331.58	259.49	-329.81	0.00	0.00	0.00
9,100.00	0.00	0.00	9,060.15	-5,503.15	331.58	259.49	-329.81	0.00	0.00	0.00
9,200.00	0.00	0.00	9,160.15	-5,603.15	331.58	259.49	-329.81	0.00	0.00	0.00
<b>1ST_BSPG_SND</b>										
9,271.85	0.00	0.00	9,232.00	-5,675.00	331.58	259.49	-329.81	0.00	0.00	0.00
9,300.00	0.00	0.00	9,260.15	-5,703.15	331.58	259.49	-329.81	0.00	0.00	0.00
9,400.00	0.00	0.00	9,360.15	-5,803.15	331.58	259.49	-329.81	0.00	0.00	0.00
9,500.00	0.00	0.00	9,460.15	-5,903.15	331.58	259.49	-329.81	0.00	0.00	0.00
<b>2ND_BSPG</b>										
9,556.85	0.00	0.00	9,517.00	-5,960.00	331.58	259.49	-329.81	0.00	0.00	0.00
9,600.00	0.00	0.00	9,560.15	-6,003.15	331.58	259.49	-329.81	0.00	0.00	0.00
9,700.00	0.00	0.00	9,660.15	-6,103.15	331.58	259.49	-329.81	0.00	0.00	0.00
<b>2ND_BSPG_SND</b>										
9,786.85	0.00	0.00	9,747.00	-6,190.00	331.58	259.49	-329.81	0.00	0.00	0.00
9,800.00	0.00	0.00	9,760.15	-6,203.15	331.58	259.49	-329.81	0.00	0.00	0.00
9,900.00	0.00	0.00	9,860.15	-6,303.15	331.58	259.49	-329.81	0.00	0.00	0.00
10,000.00	0.00	0.00	9,960.15	-6,403.15	331.58	259.49	-329.81	0.00	0.00	0.00
10,100.00	0.00	0.00	10,060.15	-6,503.15	331.58	259.49	-329.81	0.00	0.00	0.00
10,200.00	0.00	0.00	10,160.15	-6,603.15	331.58	259.49	-329.81	0.00	0.00	0.00
10,300.00	0.00	0.00	10,260.15	-6,703.15	331.58	259.49	-329.81	0.00	0.00	0.00
<b>3RD_BSPG</b>										
10,336.85	0.00	0.00	10,297.00	-6,740.00	331.58	259.49	-329.81	0.00	0.00	0.00
10,400.00	0.00	0.00	10,360.15	-6,803.15	331.58	259.49	-329.81	0.00	0.00	0.00
10,500.00	0.00	0.00	10,460.15	-6,903.15	331.58	259.49	-329.81	0.00	0.00	0.00
10,600.00	0.00	0.00	10,560.15	-7,003.15	331.58	259.49	-329.81	0.00	0.00	0.00
10,700.00	0.00	0.00	10,660.15	-7,103.15	331.58	259.49	-329.81	0.00	0.00	0.00
<b>3RD BSPG S</b>										
10,701.85	0.00	0.00	10,662.00	-7,105.00	331.58	259.49	-329.81	0.00	0.00	0.00
10,800.00	0.00	0.00	10,760.15	-7,203.15	331.58	259.49	-329.81	0.00	0.00	0.00
10,900.00	0.00	0.00	10,860.15	-7,303.15	331.58	259.49	-329.81	0.00	0.00	0.00
11,000.00	0.00	0.00	10,960.15	-7,403.15	331.58	259.49	-329.81	0.00	0.00	0.00
<b>WC A</b>										
11,011.85	0.00	0.00	10,972.00	-7,415.00	331.58	259.49	-329.81	0.00	0.00	0.00
11,100.00	0.00	0.00	11,060.15	-7,503.15	331.58	259.49	-329.81	0.00	0.00	0.00
11,200.00	0.00	0.00	11,160.15	-7,603.15	331.58	259.49	-329.81	0.00	0.00	0.00

## Planning Report

<b>Database:</b>	Database 1	<b>Local Co-ordinate Reference:</b>	Well PONY EXPRESS FED COM 706H
<b>Company:</b>	ASCENT ENERGY	<b>TVD Reference:</b>	KB 25' @ 3557.00usft
<b>Project:</b>	LEA COUNTY, NEW MEXICO (NAD 83) (GRID)	<b>MD Reference:</b>	KB 25' @ 3557.00usft
<b>Site:</b>	SEC. 16 T20S R33E N.M.P.M. (GRID)	<b>North Reference:</b>	Grid
<b>Well:</b>	PONY EXPRESS FED COM 706H	<b>Survey Calculation Method:</b>	Minimum Curvature
<b>Wellbore:</b>	ORIGINAL WELLBORE		
<b>Design:</b>	PROPOSAL #1		

## Planned Survey

MD (usft)	Inc (°)	Azi (°)	TVD (usft)	SS (usft)	+N/-S (usft)	+E/-W (usft)	Vertical Section (usft)	Dogleg Rate (°/100usft)	Build Rate (°/100usft)	Turn Rate (°/100usft)
<b>KOP (10°/100ft BUR)</b>										
11,206.04	0.00	0.00	11,166.19	-7,609.19	331.58	259.49	-329.81	0.00	0.00	0.00
11,300.00	9.40	187.22	11,259.73	-7,702.73	323.95	258.52	-322.19	10.00	10.00	0.00
11,400.00	19.40	187.22	11,356.47	-7,799.47	299.32	255.40	-297.57	10.00	10.00	0.00
11,500.00	29.40	187.22	11,447.42	-7,890.42	258.39	250.22	-256.69	10.00	10.00	0.00
<b>FTP: 100ft FNL &amp; 1743.81ft FWL of Sec 16</b>										
11,504.48	29.84	187.22	11,451.32	-7,894.32	256.20	249.94	-254.49	10.00	10.00	0.00
11,600.00	39.40	187.22	11,529.83	-7,972.83	202.42	243.13	-200.76	10.00	10.00	0.00
11,700.00	49.40	187.22	11,601.20	-8,044.20	133.10	234.35	-131.51	10.00	10.00	0.00
11,800.00	59.40	187.22	11,659.34	-8,102.34	52.54	224.14	-51.02	10.00	10.00	0.00
11,900.00	69.40	187.22	11,702.50	-8,145.50	-36.81	212.82	38.26	10.00	10.00	0.00
12,000.00	79.40	187.22	11,729.36	-8,172.36	-132.24	200.73	133.60	10.00	10.00	0.00
<b>HZ LP: 580.04ft FNL &amp; 1680ft FWL of Sec 16</b>										
12,092.94	88.69	187.22	11,739.00	-8,182.00	-223.84	189.13	225.12	10.00	10.00	0.00
12,100.00	88.69	187.22	11,739.16	-8,182.16	-230.84	188.24	232.12	0.00	0.00	0.00
<b>END OF TANGENT</b>										
12,192.94	88.69	187.22	11,741.28	-8,184.28	-323.02	176.56	324.22	0.00	0.00	0.00
12,200.00	88.69	187.01	11,741.45	-8,184.45	-330.03	175.69	331.21	3.00	-0.01	-3.00
12,300.00	88.69	184.01	11,743.74	-8,186.74	-429.53	166.09	430.65	3.00	0.00	-3.00
12,400.00	88.68	181.01	11,746.03	-8,189.03	-529.39	161.72	530.48	3.00	0.00	-3.00
<b>EOT TO 179.61° AZ</b>										
12,446.67	88.69	179.61	11,747.10	-8,190.10	-576.05	161.47	577.14	3.00	0.00	-3.00
12,500.00	88.69	179.61	11,748.33	-8,191.33	-629.36	161.84	630.45	0.00	0.00	0.00
12,600.00	88.69	179.61	11,750.62	-8,193.62	-729.34	162.53	730.43	0.00	0.00	0.00
12,700.00	88.69	179.61	11,752.92	-8,195.92	-829.31	163.21	830.40	0.00	0.00	0.00
12,800.00	88.69	179.61	11,755.21	-8,198.21	-929.28	163.90	930.37	0.00	0.00	0.00
12,900.00	88.69	179.61	11,757.51	-8,200.51	-1,029.25	164.59	1,030.35	0.00	0.00	0.00
13,000.00	88.69	179.61	11,759.80	-8,202.80	-1,129.22	165.28	1,130.32	0.00	0.00	0.00
13,100.00	88.69	179.61	11,762.10	-8,205.10	-1,229.19	165.96	1,230.29	0.00	0.00	0.00
13,200.00	88.69	179.61	11,764.39	-8,207.39	-1,329.16	166.65	1,330.27	0.00	0.00	0.00
13,300.00	88.69	179.61	11,766.69	-8,209.69	-1,429.14	167.34	1,430.24	0.00	0.00	0.00
13,400.00	88.69	179.61	11,768.98	-8,211.98	-1,529.11	168.03	1,530.21	0.00	0.00	0.00
13,500.00	88.69	179.61	11,771.28	-8,214.28	-1,629.08	168.71	1,630.19	0.00	0.00	0.00
13,600.00	88.69	179.61	11,773.57	-8,216.57	-1,729.05	169.40	1,730.16	0.00	0.00	0.00
13,700.00	88.69	179.61	11,775.87	-8,218.87	-1,829.02	170.09	1,830.14	0.00	0.00	0.00
13,800.00	88.69	179.61	11,778.16	-8,221.16	-1,928.99	170.77	1,930.11	0.00	0.00	0.00
13,900.00	88.69	179.61	11,780.46	-8,223.46	-2,028.96	171.46	2,030.08	0.00	0.00	0.00
14,000.00	88.69	179.61	11,782.75	-8,225.75	-2,128.93	172.15	2,130.06	0.00	0.00	0.00
14,100.00	88.69	179.61	11,785.05	-8,228.05	-2,228.91	172.84	2,230.03	0.00	0.00	0.00
14,200.00	88.69	179.61	11,787.34	-8,230.34	-2,328.88	173.52	2,330.00	0.00	0.00	0.00
14,300.00	88.69	179.61	11,789.64	-8,232.64	-2,428.85	174.21	2,429.98	0.00	0.00	0.00
14,400.00	88.69	179.61	11,791.93	-8,234.93	-2,528.82	174.90	2,529.95	0.00	0.00	0.00
14,500.00	88.69	179.61	11,794.22	-8,237.22	-2,628.79	175.59	2,629.92	0.00	0.00	0.00
14,600.00	88.69	179.61	11,796.52	-8,239.52	-2,728.76	176.27	2,729.90	0.00	0.00	0.00
14,700.00	88.69	179.61	11,798.81	-8,241.81	-2,828.73	176.96	2,829.87	0.00	0.00	0.00
14,800.00	88.69	179.61	11,801.11	-8,244.11	-2,928.70	177.65	2,929.85	0.00	0.00	0.00
14,900.00	88.69	179.61	11,803.40	-8,246.40	-3,028.68	178.34	3,029.82	0.00	0.00	0.00
15,000.00	88.69	179.61	11,805.70	-8,248.70	-3,128.65	179.02	3,129.79	0.00	0.00	0.00
15,100.00	88.69	179.61	11,807.99	-8,250.99	-3,228.62	179.71	3,229.77	0.00	0.00	0.00
15,200.00	88.69	179.61	11,810.29	-8,253.29	-3,328.59	180.40	3,329.74	0.00	0.00	0.00
15,300.00	88.69	179.61	11,812.58	-8,255.58	-3,428.56	181.09	3,429.71	0.00	0.00	0.00
15,400.00	88.69	179.61	11,814.88	-8,257.88	-3,528.53	181.77	3,529.69	0.00	0.00	0.00



## Planning Report

<b>Database:</b>	Database 1	<b>Local Co-ordinate Reference:</b>	Well PONY EXPRESS FED COM 706H
<b>Company:</b>	ASCENT ENERGY	<b>TVD Reference:</b>	KB 25' @ 3557.00usft
<b>Project:</b>	LEA COUNTY, NEW MEXICO (NAD 83) (GRID)	<b>MD Reference:</b>	KB 25' @ 3557.00usft
<b>Site:</b>	SEC. 16 T20S R33E N.M.P.M. (GRID)	<b>North Reference:</b>	Grid
<b>Well:</b>	PONY EXPRESS FED COM 706H	<b>Survey Calculation Method:</b>	Minimum Curvature
<b>Wellbore:</b>	ORIGINAL WELLBORE		
<b>Design:</b>	PROPOSAL #1		

Planned Survey										
MD (usft)	Inc (°)	Azi (°)	TVD (usft)	SS (usft)	+N/-S (usft)	+E/-W (usft)	Vertical Section (usft)	Dogleg Rate (°/100usft)	Build Rate (°/100usft)	Turn Rate (°/100usft)
15,500.00	88.69	179.61	11,817.17	-8,260.17	-3,628.50	182.46	3,629.66	0.00	0.00	0.00
15,600.00	88.69	179.61	11,819.47	-8,262.47	-3,728.48	183.15	3,729.64	0.00	0.00	0.00
15,700.00	88.69	179.61	11,821.76	-8,264.76	-3,828.45	183.84	3,829.61	0.00	0.00	0.00
15,800.00	88.69	179.61	11,824.06	-8,267.06	-3,928.42	184.52	3,929.58	0.00	0.00	0.00
15,900.00	88.69	179.61	11,826.35	-8,269.35	-4,028.39	185.21	4,029.56	0.00	0.00	0.00
16,000.00	88.69	179.61	11,828.65	-8,271.65	-4,128.36	185.90	4,129.53	0.00	0.00	0.00
16,100.00	88.69	179.61	11,830.94	-8,273.94	-4,228.33	186.59	4,229.50	0.00	0.00	0.00
16,200.00	88.69	179.61	11,833.24	-8,276.24	-4,328.30	187.27	4,329.48	0.00	0.00	0.00
16,300.00	88.69	179.61	11,835.53	-8,278.53	-4,428.27	187.96	4,429.45	0.00	0.00	0.00
16,400.00	88.69	179.61	11,837.83	-8,280.83	-4,528.25	188.65	4,529.42	0.00	0.00	0.00
16,500.00	88.69	179.61	11,840.12	-8,283.12	-4,628.22	189.33	4,629.40	0.00	0.00	0.00
16,600.00	88.69	179.61	11,842.42	-8,285.42	-4,728.19	190.02	4,729.37	0.00	0.00	0.00
16,700.00	88.69	179.61	11,844.71	-8,287.71	-4,828.16	190.71	4,829.35	0.00	0.00	0.00
16,800.00	88.69	179.61	11,847.01	-8,290.01	-4,928.13	191.40	4,929.32	0.00	0.00	0.00
16,900.00	88.69	179.61	11,849.30	-8,292.30	-5,028.10	192.08	5,029.29	0.00	0.00	0.00
17,000.00	88.69	179.61	11,851.60	-8,294.60	-5,128.07	192.77	5,129.27	0.00	0.00	0.00
17,100.00	88.69	179.61	11,853.89	-8,296.89	-5,228.04	193.46	5,229.24	0.00	0.00	0.00
17,200.00	88.69	179.61	11,856.18	-8,299.18	-5,328.02	194.15	5,329.21	0.00	0.00	0.00
17,300.00	88.69	179.61	11,858.48	-8,301.48	-5,427.99	194.83	5,429.19	0.00	0.00	0.00
17,400.00	88.69	179.61	11,860.77	-8,303.77	-5,527.96	195.52	5,529.16	0.00	0.00	0.00
17,500.00	88.69	179.61	11,863.07	-8,306.07	-5,627.93	196.21	5,629.13	0.00	0.00	0.00
17,600.00	88.69	179.61	11,865.36	-8,308.36	-5,727.90	196.90	5,729.11	0.00	0.00	0.00
17,700.00	88.69	179.61	11,867.66	-8,310.66	-5,827.87	197.58	5,829.08	0.00	0.00	0.00
17,800.00	88.69	179.61	11,869.95	-8,312.95	-5,927.84	198.27	5,929.06	0.00	0.00	0.00
17,900.00	88.69	179.61	11,872.25	-8,315.25	-6,027.81	198.96	6,029.03	0.00	0.00	0.00
18,000.00	88.69	179.61	11,874.54	-8,317.54	-6,127.79	199.65	6,129.00	0.00	0.00	0.00
18,100.00	88.69	179.61	11,876.84	-8,319.84	-6,227.76	200.33	6,228.98	0.00	0.00	0.00
18,200.00	88.69	179.61	11,879.13	-8,322.13	-6,327.73	201.02	6,328.95	0.00	0.00	0.00
18,300.00	88.69	179.61	11,881.43	-8,324.43	-6,427.70	201.71	6,428.92	0.00	0.00	0.00
18,400.00	88.69	179.61	11,883.72	-8,326.72	-6,527.67	202.40	6,528.90	0.00	0.00	0.00
18,500.00	88.69	179.61	11,886.02	-8,329.02	-6,627.64	203.08	6,628.87	0.00	0.00	0.00
18,600.00	88.69	179.61	11,888.31	-8,331.31	-6,727.61	203.77	6,728.85	0.00	0.00	0.00
18,700.00	88.69	179.61	11,890.61	-8,333.61	-6,827.59	204.46	6,828.82	0.00	0.00	0.00
18,800.00	88.69	179.61	11,892.90	-8,335.90	-6,927.56	205.15	6,928.79	0.00	0.00	0.00
18,900.00	88.69	179.61	11,895.20	-8,338.20	-7,027.53	205.83	7,028.77	0.00	0.00	0.00
19,000.00	88.69	179.61	11,897.49	-8,340.49	-7,127.50	206.52	7,128.74	0.00	0.00	0.00
19,100.00	88.69	179.61	11,899.79	-8,342.79	-7,227.47	207.21	7,228.71	0.00	0.00	0.00
19,200.00	88.69	179.61	11,902.08	-8,345.08	-7,327.44	207.89	7,328.69	0.00	0.00	0.00
19,300.00	88.69	179.61	11,904.38	-8,347.38	-7,427.41	208.58	7,428.66	0.00	0.00	0.00
19,400.00	88.69	179.61	11,906.67	-8,349.67	-7,527.38	209.27	7,528.63	0.00	0.00	0.00
19,500.00	88.69	179.61	11,908.97	-8,351.97	-7,627.36	209.96	7,628.61	0.00	0.00	0.00
19,600.00	88.69	179.61	11,911.26	-8,354.26	-7,727.33	210.64	7,728.58	0.00	0.00	0.00
19,700.00	88.69	179.61	11,913.56	-8,356.56	-7,827.30	211.33	7,828.56	0.00	0.00	0.00
19,800.00	88.69	179.61	11,915.85	-8,358.85	-7,927.27	212.02	7,928.53	0.00	0.00	0.00
19,900.00	88.69	179.61	11,918.14	-8,361.14	-8,027.24	212.71	8,028.50	0.00	0.00	0.00
20,000.00	88.69	179.61	11,920.44	-8,363.44	-8,127.21	213.39	8,128.48	0.00	0.00	0.00
20,100.00	88.69	179.61	11,922.73	-8,365.73	-8,227.18	214.08	8,228.45	0.00	0.00	0.00
20,200.00	88.69	179.61	11,925.03	-8,368.03	-8,327.15	214.77	8,328.42	0.00	0.00	0.00
20,300.00	88.69	179.61	11,927.32	-8,370.32	-8,427.13	215.46	8,428.40	0.00	0.00	0.00
20,400.00	88.69	179.61	11,929.62	-8,372.62	-8,527.10	216.14	8,528.37	0.00	0.00	0.00
20,500.00	88.69	179.61	11,931.91	-8,374.91	-8,627.07	216.83	8,628.34	0.00	0.00	0.00
20,600.00	88.69	179.61	11,934.21	-8,377.21	-8,727.04	217.52	8,728.32	0.00	0.00	0.00
20,700.00	88.69	179.61	11,936.50	-8,379.50	-8,827.01	218.21	8,828.29	0.00	0.00	0.00

## Planning Report

<b>Database:</b>	Database 1	<b>Local Co-ordinate Reference:</b>	Well PONY EXPRESS FED COM 706H
<b>Company:</b>	ASCENT ENERGY	<b>TVD Reference:</b>	KB 25' @ 3557.00usft
<b>Project:</b>	LEA COUNTY, NEW MEXICO (NAD 83) (GRID)	<b>MD Reference:</b>	KB 25' @ 3557.00usft
<b>Site:</b>	SEC. 16 T20S R33E N.M.P.M. (GRID)	<b>North Reference:</b>	Grid
<b>Well:</b>	PONY EXPRESS FED COM 706H	<b>Survey Calculation Method:</b>	Minimum Curvature
<b>Wellbore:</b>	ORIGINAL WELLBORE		
<b>Design:</b>	PROPOSAL #1		

## Planned Survey

MD (usft)	Inc (°)	Azi (°)	TVD (usft)	SS (usft)	+N/-S (usft)	+E/-W (usft)	Vertical Section (usft)	Dogleg Rate (°/100usft)	Build Rate (°/100usft)	Turn Rate (°/100usft)
20,800.00	88.69	179.61	11,938.80	-8,381.80	-8,926.98	218.89	8,928.27	0.00	0.00	0.00
20,900.00	88.69	179.61	11,941.09	-8,384.09	-9,026.95	219.58	9,028.24	0.00	0.00	0.00
21,000.00	88.69	179.61	11,943.39	-8,386.39	-9,126.93	220.27	9,128.21	0.00	0.00	0.00
21,100.00	88.69	179.61	11,945.68	-8,388.68	-9,226.90	220.96	9,228.19	0.00	0.00	0.00
21,200.00	88.69	179.61	11,947.98	-8,390.98	-9,326.87	221.64	9,328.16	0.00	0.00	0.00
21,300.00	88.69	179.61	11,950.27	-8,393.27	-9,426.84	222.33	9,428.13	0.00	0.00	0.00
21,400.00	88.69	179.61	11,952.57	-8,395.57	-9,526.81	223.02	9,528.11	0.00	0.00	0.00
21,500.00	88.69	179.61	11,954.86	-8,397.86	-9,626.78	223.71	9,628.08	0.00	0.00	0.00
21,600.00	88.69	179.61	11,957.16	-8,400.16	-9,726.75	224.39	9,728.06	0.00	0.00	0.00
21,700.00	88.69	179.61	11,959.45	-8,402.45	-9,826.72	225.08	9,828.03	0.00	0.00	0.00
21,800.00	88.69	179.61	11,961.75	-8,404.75	-9,926.70	225.77	9,928.00	0.00	0.00	0.00
21,900.00	88.69	179.61	11,964.04	-8,407.04	-10,026.67	226.45	10,027.98	0.00	0.00	0.00
<b>LTP: 100ft FSL &amp; 1650ft FWL of Sec 21</b>										
<b>21,978.93</b>	<b>88.69</b>	<b>179.61</b>	<b>11,965.85</b>	<b>-8,408.85</b>	<b>-10,105.57</b>	<b>227.00</b>	<b>10,106.89</b>	<b>0.00</b>	<b>0.00</b>	<b>0.00</b>
22,000.00	88.69	179.61	11,966.34	-8,409.34	-10,126.64	227.14	10,127.95	0.00	0.00	0.00
<b>BHL: 50ft FSL &amp; 1650ft FWL of Sec 21</b>										
<b>22,028.94</b>	<b>88.69</b>	<b>179.61</b>	<b>11,967.00</b>	<b>-8,410.00</b>	<b>-10,155.57</b>	<b>227.34</b>	<b>10,156.88</b>	<b>0.00</b>	<b>0.00</b>	<b>0.00</b>

## Formations

MD (usft)	TVD (usft)	Name	Lithology	Dip (°)	Dip Direction (°)
1,232.00	1,232.00	RSTLR		0.00	
1,572.00	1,572.00	SALDO		0.00	
2,827.24	2,827.00	BASE_SALADO_SALTS		0.00	
2,852.33	2,852.00	TANSIL		0.00	
3,028.60	3,027.00	YATES		0.00	
3,283.19	3,277.00	CAPITAN_REEF_TOP		0.00	
5,256.85	5,217.00	TOP_DELAWARE_SAND		0.00	
5,326.85	5,287.00	CHERRY_CANYON		0.00	
6,641.85	6,602.00	BRUSHY_CANYON		0.00	
8,191.85	8,152.00	BSPG_LIME		0.00	
8,319.85	8,280.00	AVLN		0.00	
8,726.85	8,687.00	LEONARD_B		0.00	
9,271.85	9,232.00	1ST_BSPG_SND		0.00	
9,556.85	9,517.00	2ND_BSPG		0.00	
9,786.85	9,747.00	2ND_BSPG_SND		0.00	
10,336.85	10,297.00	3RD_BSPG		0.00	
10,701.85	10,662.00	3RD BSPG S		0.00	
11,011.85	10,972.00	WC A		0.00	

## Planning Report

<b>Database:</b>	Database 1	<b>Local Co-ordinate Reference:</b>	Well PONY EXPRESS FED COM 706H
<b>Company:</b>	ASCENT ENERGY	<b>TVD Reference:</b>	KB 25' @ 3557.00usft
<b>Project:</b>	LEA COUNTY, NEW MEXICO (NAD 83) (GRID)	<b>MD Reference:</b>	KB 25' @ 3557.00usft
<b>Site:</b>	SEC. 16 T20S R33E N.M.P.M. (GRID)	<b>North Reference:</b>	Grid
<b>Well:</b>	PONY EXPRESS FED COM 706H	<b>Survey Calculation Method:</b>	Minimum Curvature
<b>Wellbore:</b>	ORIGINAL WELLBORE		
<b>Design:</b>	PROPOSAL #1		

## Plan Annotations

MD (usft)	TVD (usft)	Local Coordinates		Comment
		+N/-S (usft)	+E/-W (usft)	
0.00	0.00	0.00	0.00	SHL: 355ft FNL & 1492ft FWL of Sec 16
2,600.00	2,600.00	0.00	0.00	START NUDGE (2°/100ft BUR)
3,200.00	3,195.62	49.30	38.58	EOB TO 12° INC
4,622.92	4,587.45	282.28	220.91	END OF TANGENT
5,222.92	5,183.07	331.58	259.49	EOD TO VERTICAL
11,206.04	11,166.19	331.58	259.49	KOP (10°/100ft BUR)
11,504.48	11,451.32	256.20	249.94	FTP: 100ft FNL & 1743.81ft FWL of Sec 16
12,092.94	11,739.00	-223.84	189.13	HZ LP: 580.04ft FNL & 1680ft FWL of Sec 16
12,192.94	11,741.28	-323.02	176.56	END OF TANGENT
12,446.67	11,747.10	-576.05	161.47	EOT TO 179.61° AZ
21,978.93	11,965.85	-10,105.57	227.00	LTP: 100ft FSL & 1650ft FWL of Sec 21
22,028.94	11,967.00	-10,155.57	227.34	BHL: 50ft FSL & 1650ft FWL of Sec 21

## PECOS DISTRICT DRILLING CONDITIONS OF APPROVAL

<b>OPERATOR'S NAME:</b>	<b>Ascent Energy LLC</b>
<b>LEASE NO.:</b>	<b>NMNM108976</b>
<b>WELL NAME &amp; NO.:</b>	<b>Pony Express Federal Com 706H</b>
<b>SURFACE HOLE FOOTAGE:</b>	<b>355'/N &amp; 1492'/W</b>
<b>BOTTOM HOLE FOOTAGE:</b>	<b>50'/S &amp; 2310'/W</b>
<b>LOCATION:</b>	<b>Section 16, T.20 S., R.33 E., NMPM</b>
<b>COUNTY:</b>	<b>Lea County, New Mexico</b>

COA

H2S	<input checked="" type="radio"/> Yes	<input type="radio"/> No	
Potash	<input type="radio"/> None	<input type="radio"/> Secretary	<input checked="" type="radio"/> R-111-P
Cave/Karst Potential	<input checked="" type="radio"/> Low	<input type="radio"/> Medium	<input type="radio"/> High
Cave/Karst Potential	<input type="radio"/> Critical		
Variance	<input type="radio"/> None	<input checked="" type="radio"/> Flex Hose	<input type="radio"/> Other
Wellhead	<input type="radio"/> Conventional	<input checked="" type="radio"/> Multibowl	<input type="radio"/> Both
Other	<input checked="" type="checkbox"/> 4 String Area	<input checked="" type="checkbox"/> Capitan Reef	<input type="checkbox"/> WIPP
Other	<input checked="" type="checkbox"/> Fluid Filled	<input type="checkbox"/> Cement Squeeze	<input type="checkbox"/> Pilot Hole
Special Requirements	<input type="checkbox"/> Water Disposal	<input checked="" type="checkbox"/> COM	<input type="checkbox"/> Unit

### A. HYDROGEN SULFIDE

A Hydrogen Sulfide (H2S) Drilling Plan shall be activated 500 feet prior to drilling into the **Hat Mesa Pool** Formation. As a result, the Hydrogen Sulfide area must meet Onshore Order 6 requirements, which includes equipment and personnel/public protection items. If Hydrogen Sulfide is encountered, please provide measured values and formations to the BLM.

### B. CASING

1. The **20 inch** surface casing shall be set at approximately **1,257 feet** (a minimum of **25 feet (Lea County)** into the Rustler Anhydrite and above the salt) and cemented to the surface.
  - a. If cement does not circulate to the surface, the appropriate BLM office shall be notified and a temperature survey utilizing an electronic type temperature survey with surface log readout will be used or a cement bond log shall be run to verify the top of the cement. Temperature survey will be run a minimum of six hours after pumping cement and ideally between 8-10 hours after completing the cement job.

- b. Wait on cement (WOC) time for a primary cement job will be a minimum of **24 hours in the Potash Area** or 500 pounds compressive strength, whichever is greater. (This is to include the lead cement)
  - c. Wait on cement (WOC) time for a remedial job will be a minimum of 4 hours after bringing cement to surface or 500 pounds compressive strength, whichever is greater.
  - d. If cement falls back, remedial cementing will be done prior to drilling out that string.
2. The minimum required fill of cement behind the **13-3/8 inch** intermediate 1 casing and shall be set at approximately **2,952 feet** is:
  - Cement to surface. If cement does not circulate see B.1.a, c-d above.

**Wait on cement (WOC) time for a primary cement job is to include the lead cement slurry due to cave/karst or potash.**

- ❖ In R111 Potash Areas if cement does not circulate to surface on the first two salt protection casing strings, the cement on the 3rd casing string must come to surface.
- ❖ In Capitan Reef Areas if cement does not circulate to surface on the first two casing strings, the cement on the 3rd casing string must come to surface.
- ❖ **Special Capitan Reef requirements.** If lost circulation (50% or greater) occurs below the Base of the Salt, the operator shall do the following:  
**(Use this for 3 string wells in the Capitan Reef, if 4 string well ensure FW based mud used across the capitan interval)**
  - Switch to fresh water mud to protect the Capitan Reef and use fresh water mud until setting the intermediate casing. The appropriate BLM office is to be notified for a PET to witness the switch to fresh water.
  - Daily drilling reports from the Base of the Salt to the setting of the intermediate casing are to be submitted to the BLM CFO engineering staff via e-mail by 0800 hours each morning. Any lost circulation encountered is to be recorded on these drilling reports. The daily drilling report should show mud volume per shift/tour. Failure to submit these reports will result in an Incidence of Non-Compliance being issued for failure to comply with the Conditions of Approval. If not already planned, the operator shall run a caliper survey for the intermediate well bore and submit to the appropriate BLM office.

**Intermediate 2 casing must be kept fluid filled to meet BLM minimum collapse requirement.**

3. The minimum required fill of cement behind the **9-5/8 inch** intermediate 2 casing and shall be set at approximately **5,217 feet** is:

**Option 1:**

- Cement to surface. If cement does not circulate see B.1.a, c-d above.

**Wait on cement (WOC) time for a primary cement job is to include the lead cement slurry due to cave/karst, potash or capitan reef.**

**Option 2:**

Operator has proposed a DV tool, the depth may be adjusted as long as the cement is changed proportionally. The DV tool may be cancelled if cement circulates to surface on the first stage.

- a. First stage to DV tool: Cement to circulate. If cement does not circulate off the DV tool, contact the appropriate BLM office before proceeding with second stage cement job.

- b. Second stage above DV tool:

- Cement to surface. If cement does not circulate see B.1.a, c-d above.

**Wait on cement (WOC) time for a primary cement job is to include the lead cement slurry due to cave/karst, potash or capitan reef.**

4. The minimum required fill of cement behind the **7-5/8 inch** intermediate 3 casing is:

- Cement to surface. If cement does not circulate see B.1.a, c-d above.

**Wait on cement (WOC) time for a primary cement job is to include the lead cement slurry due to cave/karst, potash or capitan reef.**

5. The minimum required fill of cement behind the **5-1/2 inch** production casing with a tie-back into the previous casing to the surface is:

- Cement should tie-back at least **50 feet** on top of Capitan Reef top **or 200 feet** into the previous casing, whichever is greater. If cement does not circulate see B.1.a, c-d above.

**Wait on cement (WOC) time for a primary cement job is to include the lead cement slurry due to cave/karst, potash or capitan reef.**

**THE PRODUCTION CASING HAS AN EXCESS OF 14%.  
ADDITIONAL CEMENT MAY BE NEEDED.**

### C. PRESSURE CONTROL

1. Variance approved to use flex line from BOP to choke manifold. Manufacturer's specification to be readily available. No external damage to flex line. Flex line to be installed as straight as possible (no hard bends).'
2. Operator has proposed a multi-bowl wellhead assembly. This assembly will only be tested when installed on the surface casing. Minimum working pressure of the blowout preventer (BOP) and related equipment (BOPE) required for drilling below the surface, intermediate 1, intermediate 2, and intermediate 3 casing shoe shall be **5000 (5M) psi**.
  - a. Wellhead shall be installed by manufacturer's representatives, submit documentation with subsequent sundry.
  - b. If the welding is performed by a third party, the manufacturer's representative shall monitor the temperature to verify that it does not exceed the maximum temperature of the seal.
  - c. Manufacturer representative shall install the test plug for the initial BOP test.
  - d. If the cement does not circulate and one inch operations would have been possible with a standard wellhead, the well head shall be cut off, cementing operations performed and another wellhead installed.
  - e. Whenever any seal subject to test pressure is broken, all the tests in OOGO2.III.A.2.i must be followed.

### D. SPECIAL REQUIREMENT (S)

#### Communitization Agreement

- The operator will submit a Communitization Agreement to the Santa Fe Office, 301 Dinosaur Trail Santa Fe, New Mexico 87508, at least 90 days before the anticipated date of first production from a well subject to a spacing order issued by the New Mexico Oil Conservation Division. The Communitization Agreement will include the signatures of all working interest owners in all Federal and Indian leases subject to the Communitization Agreement (i.e., operating rights owners and lessees of record), or certification that the operator has obtained the written signatures of all such owners and will make those signatures available to the BLM immediately upon request.
- If the operator does not comply with this condition of approval, the BLM may take enforcement actions that include, but are not limited to, those specified in 43 CFR 3163.1.
- In addition, the well sign shall include the surface and bottom hole lease numbers. When the Communitization Agreement number is known, it shall also be on the sign.



## GENERAL REQUIREMENTS

The BLM is to be notified in advance for a representative to witness:

- a. Spudding well (minimum of 24 hours)
- b. Setting and/or Cementing of all casing strings (minimum of 4 hours)
- c. BOPE tests (minimum of 4 hours)

☒ Eddy County

Call the Carlsbad Field Office, 620 East Greene St., Carlsbad, NM 88220, (575) 361-2822

☒ Lea County

Call the Hobbs Field Station, 414 West Taylor, Hobbs NM 88240, (575) 393-3612

1. Unless the production casing has been run and cemented or the well has been properly plugged, the drilling rig shall not be removed from over the hole without prior approval.
  - a. In the event the operator has proposed to drill multiple wells utilizing a skid/walking rig. Operator shall secure the wellbore on the current well, after installing and testing the wellhead, by installing a blind flange of like pressure rating to the wellhead and a pressure gauge that can be monitored while drilling is performed on the other well(s).
  - b. When the operator proposes to set surface casing with Spudder Rig
    - Notify the BLM when moving in and removing the Spudder Rig.
    - Notify the BLM when moving in the 2<sup>nd</sup> Rig. Rig to be moved in within 90 days of notification that Spudder Rig has left the location.
    - BOP/BOPE test to be conducted per Onshore Oil and Gas Order No. 2 as soon as 2nd Rig is rigged up on well.
2. Floor controls are required for 3M or Greater systems. These controls will be on the rig floor, unobstructed, readily accessible to the driller and will be operational at all times during drilling and/or completion activities. Rig floor is defined as the area immediately around the rotary table; the area immediately above the substructure on which the draw works are located, this does not include the dog house or stairway area.
3. The record of the drilling rate along with the GR/N well log run from TD to surface (horizontal well – vertical portion of hole) shall be submitted to the BLM office as well as all other logs run on the borehole 30 days from completion. If available, a digital copy of the logs is to be submitted in addition to the paper copies. The Rustler top and top and bottom of Salt are to be recorded on the Completion Report.

## A. CASING

1. Changes to the approved APD casing program need prior approval if the items substituted are of lesser grade or different casing size or are Non-API. The Operator can exchange the components of the proposal with that of superior strength (i.e. changing from J-55 to N-80, or from 36# to 40#). Changes to the approved cement program need prior approval if the altered cement plan has less volume or strength or if the changes are substantial (i.e. Multistage tool, ECP, etc.). The initial wellhead installed on the well will remain on the well with spools used as needed.
2. Wait on cement (WOC) for Potash Areas: After cementing but before commencing any tests, the casing string shall stand cemented under pressure until both of the following conditions have been met: 1) cement reaches a minimum compressive strength of 500 psi for all cement blends, 2) until cement has been in place at least 24 hours. WOC time will be recorded in the driller's log. The casing integrity test can be done (prior to the cement setting up) immediately after bumping the plug.
3. Wait on cement (WOC) for Water Basin: After cementing but before commencing any tests, the casing string shall stand cemented under pressure until both of the following conditions have been met: 1) cement reaches a minimum compressive strength of 500 psi at the shoe, 2) until cement has been in place at least 8 hours. WOC time will be recorded in the driller's log. See individual casing strings for details regarding lead cement slurry requirements. The casing integrity test can be done (prior to the cement setting up) immediately after bumping the plug.
4. Provide compressive strengths including hours to reach required 500 pounds compressive strength prior to cementing each casing string. Have well specific cement details onsite prior to pumping the cement for each casing string.
5. No pea gravel permitted for remedial or fall back remedial without prior authorization from the BLM engineer.
6. On that portion of any well approved for a 5M BOPE system or greater, a pressure integrity test of each casing shoe shall be performed. Formation at the shoe shall be tested to a minimum of the mud weight equivalent anticipated to control the formation pressure to the next casing depth or at total depth of the well. This test shall be performed before drilling more than 20 feet of new hole.
7. If hardband drill pipe is rotated inside casing, returns will be monitored for metal. If metal is found in samples, drill pipe will be pulled and rubber protectors which have a larger diameter than the tool joints of the drill pipe will be installed prior to continuing drilling operations.
8. Whenever a casing string is cemented in the R-111-P potash area, the NMOCD requirements shall be followed.

**B. PRESSURE CONTROL**

1. All blowout preventer (BOP) and related equipment (BOPE) shall comply with well control requirements as described in Onshore Oil and Gas Order No. 2 and API RP 53 Sec. 17.
2. If a variance is approved for a flexible hose to be installed from the BOP to the choke manifold, the following requirements apply: The flex line must meet the requirements of API 16C. Check condition of flexible line from BOP to choke manifold, replace if exterior is damaged or if line fails test. Line to be as straight as possible with no hard bends and is to be anchored according to Manufacturer's requirements. The flexible hose can be exchanged with a hose of equal size and equal or greater pressure rating. Anchor requirements, specification sheet and hydrostatic pressure test certification matching the hose in service, to be onsite for review. These documents shall be posted in the company man's trailer and on the rig floor.
3. 5M or higher system requires an HCR valve, remote kill line and annular to match. The remote kill line is to be installed prior to testing the system and tested to stack pressure.
4. If the operator has proposed a multi-bowl wellhead assembly in the APD. The following requirements must be met:
  - a. Wellhead shall be installed by manufacturer's representatives, submit documentation with subsequent sundry.
  - b. If the welding is performed by a third party, the manufacturer's representative shall monitor the temperature to verify that it does not exceed the maximum temperature of the seal.
  - c. Manufacturer representative shall install the test plug for the initial BOP test.
  - d. Whenever any seal subject to test pressure is broken, all the tests in OOGO2.III.A.2.i must be followed.
  - e. If the cement does not circulate and one inch operations would have been possible with a standard wellhead, the well head shall be cut off, cementing operations performed and another wellhead installed.
5. The appropriate BLM office shall be notified a minimum of **4** hours in advance for a representative to witness the tests.
  - a. In a water basin, for all casing strings utilizing slips, these are to be set as soon as the crew and rig are ready and any fallback cement remediation has been done. The casing cut-off and BOP installation can be initiated four hours after installing the slips, which will be approximately six hours after bumping the plug. For those casing strings not using slips, the minimum wait time before cut-off is eight hours after bumping the plug. BOP/BOPE testing can begin after cut-off or once cement reaches 500 psi compressive strength (including

lead when specified), whichever is greater. However, if the float does not hold, cut-off cannot be initiated until cement reaches 500 psi compressive strength (including lead when specified).

- b. In potash areas, for all casing strings utilizing slips, these are to be set as soon as the crew and rig are ready and any fallback cement remediation has been done. For all casing strings, casing cut-off and BOP installation can be initiated at twelve hours after bumping the plug. However, **no tests** shall commence until the cement has had a minimum of 24 hours setup time, except the casing pressure test can be initiated immediately after bumping the plug (only applies to single stage cement jobs).
- c. The tests shall be done by an independent service company utilizing a test plug not a cup or J-packer. The operator also has the option of utilizing an independent tester to test without a plug (i.e. against the casing) pursuant to Onshore Order 2 with the pressure not to exceed 70% of the burst rating for the casing. Any test against the casing must meet the WOC time for water basin (8 hours) or potash (24 hours) or 500 pounds compressive strength, whichever is greater, prior to initiating the test (see casing segment as lead cement may be critical item).
- d. The test shall be run on a 5000 psi chart for a 2-3M BOP/BOP, on a 10000 psi chart for a 5M BOP/BOPE and on a 15000 psi chart for a 10M BOP/BOPE. If a linear chart is used, it shall be a one hour chart. A circular chart shall have a maximum 2 hour clock. If a twelve hour or twenty-four hour chart is used, tester shall make a notation that it is run with a two hour clock.
- e. The results of the test shall be reported to the appropriate BLM office.
- f. All tests are required to be recorded on a calibrated test chart. A copy of the BOP/BOPE test chart and a copy of independent service company test will be submitted to the appropriate BLM office.
- g. The BOP/BOPE test shall include a low pressure test from 250 to 300 psi. The test will be held for a minimum of 10 minutes if test is done with a test plug and 30 minutes without a test plug. This test shall be performed prior to the test at full stack pressure.
- h. BOP/BOPE must be tested by an independent service company within 500 feet of the top of the Wolfcamp formation if the time between the setting of the intermediate casing and reaching this depth exceeds 20 days. This test does not exclude the test prior to drilling out the casing shoe as per Onshore Order No. 2.

C. DRILLING MUD

Mud system monitoring equipment, with derrick floor indicators and visual and audio alarms, shall be operating before drilling into the Wolfcamp formation, and shall be used until production casing is run and cemented.

D. WASTE MATERIAL AND FLUIDS

All waste (i.e. drilling fluids, trash, salts, chemicals, sewage, gray water, etc.) created as a result of drilling operations and completion operations shall be safely contained and disposed of properly at a waste disposal facility. No waste material or fluid shall be disposed of on the well location or surrounding area.

Porto-johns and trash containers will be on-location during fracturing operations or any other crew-intensive operations.

**YJ (02/17/2021)**

Ascent Energy, LLC  
PONY EXPRESS PAD 2  
NENW SEC 16, T20S, R33E, N.M.P.M.  
Lea County, New Mexico

### H<sub>2</sub>S Drilling Operations Plan

1. All personnel will be trained in H<sub>2</sub>S working conditions as required by Onshore Order 6 before drilling out of the surface casing.
2. Two briefing areas will be established. Each briefing area will be  $\geq 150'$  from the wellhead, perpendicular from one another, and easily entered and exited. See H<sub>2</sub>S page 4 for more details.
3. H<sub>2</sub>S Safety Equipment/Systems:
  - a. Well Control Equipment
    - i. Flare line will be  $\geq 150'$  from the wellhead and ignited by a flare gun
    - ii. Beware of SO<sub>2</sub> created by flaring
    - iii. Choke manifold will have a remotely operated choke
    - iv. Mud gas separator
  - b. Protective Equipment for Personnel
    - i. Every person on site will wear a personal H<sub>2</sub>S and SO<sub>2</sub> monitor at all times while on site. Monitors will not be worn on hard hats. Monitors will be worn on the front of the waist or chest.
    - ii. One self-contained breathing apparatus (SCBA) 30-minute rescue pack will be at each briefing area. Two 30-minute SCBA packs will be stored in the safety trailer.
    - iii. Four work/escape packs will be on the rig floor. Each pack will have a sufficiently long hose to allow unimpaired work activity.
    - iv. Four emergency escape packs will be in the doghouse for emergency evacuation.
    - v. Hand signals will be used when wearing protective breathing apparatus.
    - vi. Stokes litter or stretcher
    - vii. Two full OSHA compliant body harnesses
    - viii. A 100' long x 5/8" OSHA compliant rope
    - ix. One 20-pound ABC fire extinguisher
  - c. H<sub>2</sub>S Detection & Monitoring Equipment
    - i. Every person on site will wear a personal H<sub>2</sub>S and SO<sub>2</sub> monitor at all times while on site. Monitors will not be worn on hard hats. Monitors will be worn on the front of the waist or chest.
    - ii. A stationary detector with three sensors will be in the doghouse
    - iii. Sensors will be installed on the rig floor, bell nipple, and at the end of the flow line or where drilling fluids are discharged.
    - iv. Visual alarm will be triggered at 10 ppm.
    - v. Audible alarm will be triggered at 10 ppm.
    - vi. Calibration will occur at least every 30 days. Gas sample tubes will be kept in the safety trailer.

Ascent Energy, LLC  
PONY EXPRESS PAD 2  
NENW SEC 16, T20S, R33E, N.M.P.M.  
Lea County, New Mexico

- d. Visual Warning System
    - i. A color-coded H<sub>2</sub>S condition sign will be set at each pad entrance.
    - ii. Color-coded condition flag will be installed to indicate current H<sub>2</sub>S conditions.
    - iii. Two wind socks will be installed that will be visible from all sides.
  - e. Mud Program
    - i. A water based mud with a pH of > 10 will be maintained to control corrosion, H<sub>2</sub>S gas returns to the surface, and minimize sulfide stress cracking and embrittlement.
    - ii. Drilling mud containing H<sub>2</sub>S gas will be degassed at an optimum location for the rig configuration.
    - iii. This gas will be piped into the flare system.
    - iv. Enough mud additives will be on location to scavenge and/or neutralize H<sub>2</sub>S where formation pressures are unknown.
  - f. Metallurgy
    - i. All equipment that has the potential to be exposed to H<sub>2</sub>S will be suitable for H<sub>2</sub>S service.
    - ii. Equipment that will meet these metallurgical standards include the drill string, casing, wellhead, BOP assembly, casing head and spool, rotating head, kill lines, choke, choke manifold and lines, valves, mud-gas separators, DST tools, test units, tubing, flanges, and other related equipment (elastomer packings and seals) .
  - g. Communication from well site
    - i. Cell phones and/or two-way radios will be used to communicate from the well site.
4. A remote-controlled choke, mud-gas separator, and a rotating head will be installed before drilling or testing any formation expected to contain H<sub>2</sub>S.



Ascent Energy, LLC  
PONY EXPRESS PAD 2  
NENW SEC 16, T20S, R33E, N.M.P.M.  
Lea County, New Mexico

**Ascent Emergency Contact Numbers****Company Personnel to be Notified**

Ascent Emergency Contact	(303) 281-9951
Gema Volek (Vice President of Drilling)	Cell: (785) 312-2092
Matt Ward (Chief Operations Officer)	Cell: (303) 506-6647
Dean Gimbel (Vice President Completions)	Cell: (303) 945-1323

**Local and County Agencies**

Monument Fire Department	911 or (575) 393-4339
Hobbs Fire Marshal	(575) 391-8185
Lea County Sheriff (Lovington)	911 or (575) 396-3611
Lea County Emergency Management (Lovington)	(575) 396-8602
Lea Regional Medical Center Hospital (Hobbs)	(575) 492-5000

Ascent Energy, LLC  
PONY EXPRESS PAD 2  
NENW SEC 16, T20S, R33E, N.M.P.M.  
Lea County, New Mexico

**State Agencies**

NM State Police (Hobbs)	(575) 392-5 5 8 8
NM Oil Conservation (Hobbs)	(575) 370-3186
NM oil Conservation (Santa Fe)	(505) 476-3440
NM Department of Transportation (Roswell)	(575) 637-7201

**Federal Agencies**

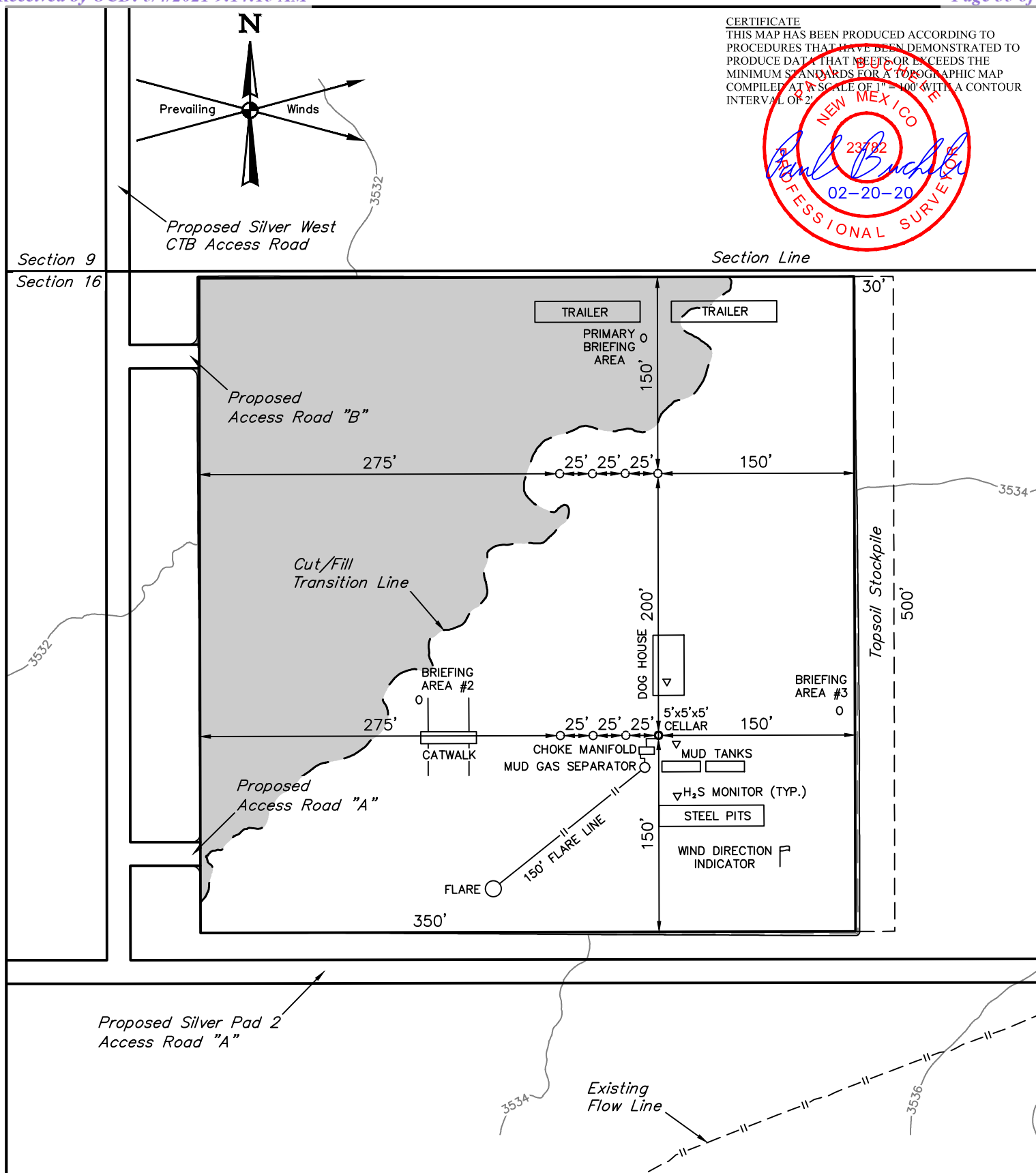
BLM Carlsbad Field Office	(575) 234-5972
BLM Hobbs Field Station	(575) 393-3612
National Response Center	(800) 424-8802
United States Environmental Protection Agency (USEPA Region 6 Dallas)	(800) 887-6063 (214) 665-6444

**Air Evacuation**

Med Flight Air Ambulance (Albuquerque)	(800) 842-4431
Lifeguard (Albuquerque)	(888) 866-7256

**Veterinarians**

Dal Paso Animal Hospital (Hobbs)	(575) 397-2286
Hobbs Animal Clinic And Pet Care (Hobbs)	(575) 392-5563
Great Plains Veterinary Clinic and Hospital (Hobbs)	(505) 392-5513

**NOTES:**

- Contours shown at 2' intervals.
- May have different number of Pump Houses and Combination Buildings.

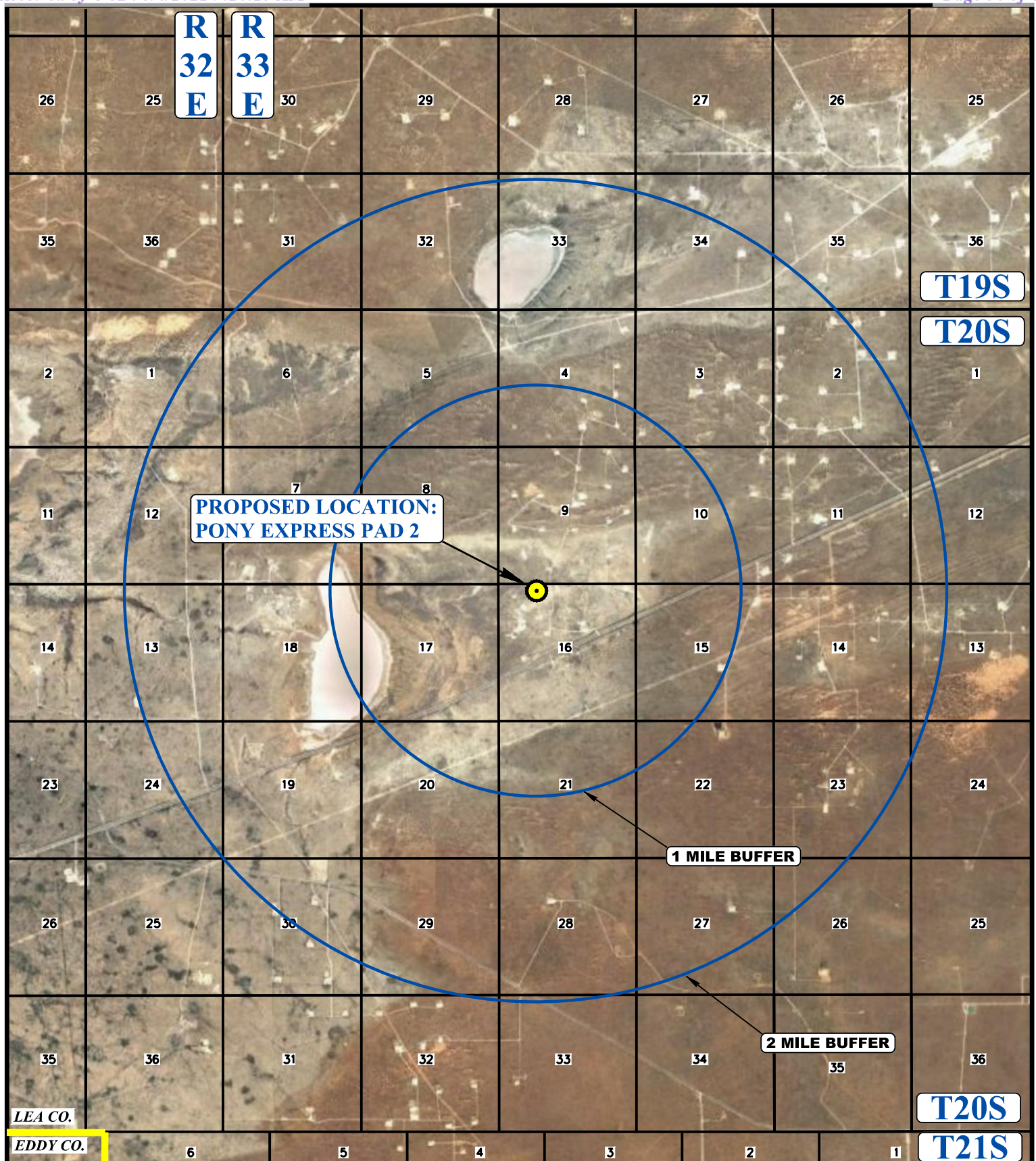
**ASCENT ENERGY**

**PONY EXPRESS PAD 2**  
 NE 1/4 NW 1/4, SECTION 16, T20S, R33E, N.M.P.M.  
 LEA COUNTY, NEW MEXICO

SURVEYED BY	R.C., M.D.	01-31-20	SCALE
DRAWN BY	K.A.	02-20-20	1" = 100'
<b>TYPICAL RIG LAYOUT</b>			<b>FIGURE #3</b>



**UELS, LLC**  
 Corporate Office \* 85 South 200 East  
 Vernal, UT 84078 \* (435) 789-1017

**LEGEND:**

 **PROPOSED LOCATION**

**ASCENT ENERGY**

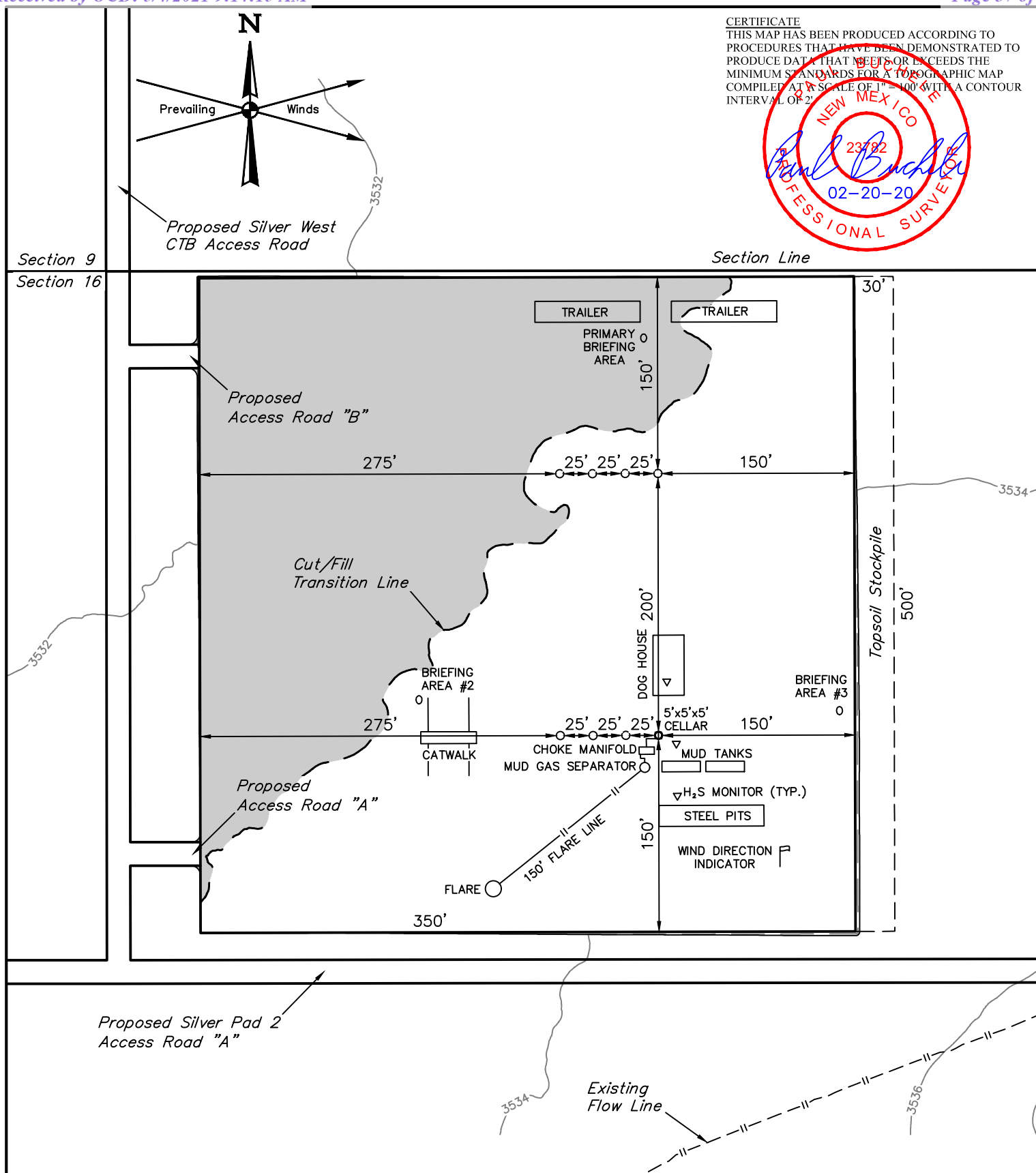
**PONY EXPRESS PAD 2**  
 N2 1/2 NW 1/4, SECTION 16, T20S, R33E, N.M.P.M.  
 LEA COUNTY, NEW MEXICO

SURVEYED BY	R.C., M.D.	01-31-20	SCALE
DRAWN BY	V.L.D.	03-17-20	1 : 60,000
<b>2 MILE RADIUS MAP</b>			



**UELS, LLC**  
 Corporate Office \* 85 South 200 East  
 Vernal, UT 84078 \* (435) 789-1017



**NOTES:**

- Contours shown at 2' intervals.
- May have different number of Pump Houses and Combination Buildings.

**ASCENT ENERGY**

**PONY EXPRESS PAD 2**  
NE 1/4 NW 1/4, SECTION 16, T20S, R33E, N.M.P.M.  
LEA COUNTY, NEW MEXICO



**UELS, LLC**  
Corporate Office \* 85 South 200 East  
Vernal, UT 84078 \* (435) 789-1017

SURVEYED BY	R.C., M.D.	01-31-20	SCALE
DRAWN BY	K.A.	02-20-20	1" = 100'
<b>TYPICAL RIG LAYOUT</b>			<b>FIGURE #3</b>

Ascent Energy, LLC  
 Pony Express Pad 2  
 NENW, SEC 16, T20S, R33E, N.M.P.M.  
 Lea County, New Mexico

### Onshore Order No.1 Surface Use Plan of Operations

**Pony Express Fed Com 303H**

SHL: 355' FNL, 1442' FWL SEC. 16, T20S, R33E

**Pony Express Fed Com 402H**

SHL: 355' FNL, 1467' FWL SEC. 16, T20S, R33E

**Pony Express Fed Com 503H**

SHL: 155' FNL, 1517' FWL SEC. 16, T20S, R33E

**Pony Express Fed Com 702H**

SHL: 155' FNL, 1492' FWL SEC. 16, T20S, R33E

**Pony Express Fed Com 304H**

SHL: 355' FNL, 1517' FWL SEC. 16, T20S, R33E

**Pony Express Fed Com 502H**

SHL: 155' FNL, 1442' FWL SEC. 16, T20S, R33E

**Pony Express Fed Com 602H**

SHL: 155' FNL, 1467' FWL SEC. 16, T20S, R33E

**Pony Express Fed Com 706H**

SHL: 355' FNL, 1492' FWL SEC. 16, T20S, R33E

This surface use plan of operations provides site specific information for the above referenced wells located on the Pony Express 2 Pad within the proposed Lone Ranger Drill Island.

**1. Existing Roads** \*See Pony Express Pad 2 & Pony Express West CTB TOPO A & B – Access Road Map(s)

Existing roads providing access to the well site are shown on Topo Maps A and B. Non-state roads will be maintained as needed to Gold Book standards. This includes pulling ditches, preserving the crown, and cleaning culverts. This will be done at least once a year, and more often as needed.

*Proceed in a westerly, then southwesterly direction from Hobbs, New Mexico along Highway 180 approximately 33.3 miles to the junction of this road and an existing road to the northwest; turn right then proceed in a northwesterly then westerly, then northerly direction approximately 0.6 miles to the beginning of the proposed Silver 1 Pad access road "A" to the west; follow road flags in a westerly direction approximately 971' to the beginning of the proposed Silver West CTB access road to the north; follow road flags in a northerly direction approximately 90' to the beginning of the proposed access road "A" to the east; follow road flags in an easterly direction approximately 63' to the proposed location. Total Distance from Hobbs, New Mexico to the proposed well location is approximately 34.1 Miles.*

**2. New Roads** \*See Pony Express Pad 2 & Pony Express West CTB TOPO B - Access Road Map & R-O-W Plats

There will be 195' of new resource roads that will be crowned and ditched. The proposed construction width will be 30' with a 14' wide driving surface, and be surfaced with caliche. Maximum disturbed width = 30', maximum grade = 3%, maximum cut/fill = 3'. No culvert, cattle guard, or vehicle turn out is needed. Upgrading will consist of filling potholes with caliche.

- a. Road "A" Dimensions (Permanent road): 63'
- b. Road "B" Dimensions (Permanent road): 62'
- c. Road "C" Dimensions (Permanent road to CTB): 70'

**New road access erosion control:** Crowned and ditched



Ascent Energy, LLC  
Pony Express Pad 2  
NENW, SEC 16, T20S, R33E, N.M.P.M.  
Lea County, New Mexico

3. **Location of Existing Wells** \*See Pony Express Pad 2 Topo C: Well Proximity Map.  
Existing oil, gas, water and P&A wells within a mile of the proposed wellbore.  
No SWD or injection well is within a mile radius.
4. **Location of Existing and/or Proposed Production Facilities** \*See Pony Express Pad 2 Figure 3-4 & Pony Express West CTB Figure 1  
Flare(s) will be set on the southernmost bottom of the well pad. Separators and treaters will be placed in the southeast corner of the well pad. A central tank battery (CTB) will be built south of the well pad. Tanks will be on the east side of the CTB.  
  
A 244' long x 3' wide x 3' deep trench will run between the well pad and CTB. Trench will hold 4" O.D. steel, HDPE, or composite oil line, fuel gas and gas sale lines, and SWD line. (There will be one trench per well. Trenches will be 3' apart. There will be 8 wells on the pad.)  
  
A 83' long above ground powerline will run between the well pad and CTB.
5. **Location and Types of Water Supply** \*See Water Transportation Map  
Water will be trucked from the 3Bear Libby water station on private land, located NE1/4 Section 26, T20S, R34E.
6. **Construction Materials** \*See Construction Materials Source Map  
NM One Call (811), offset operators will be notified before construction starts, if necessary. Top 4" of soil and brush will be stockpiled east of the well pad. V-door will face east. Closed loop drilling system will be used. Top 4" of soil and brush will be piled east of the CTB. Caliche will be hauled from an existing caliche pit on private (Berry) land in E2N34 35-20S-34E.
7. **Methods of Handling Waste**  
All trash will be placed in a portable trash cage. It will be hauled to the Lea County landfill. There will be no trash burning. Contents (drill cuttings, mud, salts, and other chemicals) of the mud tanks will be hauled to state approved disposal site at R360's state approved (NM-01-0006) disposal site at Halfway, NM. Human waste will be disposed of in chemical toilets and hauled to the Hobbs wastewater treatment plant.  
**Reserve pit:** No reserve pit planned.
8. **Ancillary Facilities**  
There will be no airstrip or camp. Camper trailers will be on location for the company man, tool pusher, and mud logger.





Ascent Energy, LLC  
 Pony Express Pad 2  
 NENW, SEC 16, T20S, R33E, N.M.P.M.  
 Lea County, New Mexico

**9. Well Site Layout** \*See Pony Express Pad 2 Figures 1-3 & Pony Express West CTB Figures 1 & 2

Also see Rig Layout (Figure #3) for depictions of the well pad, trash cage, access onto the location, parking, living facilities, and rig orientation.

**10. Plans for Final Surface Reclamation** \*See Pony Express Pad 2 Figure 4

**Interim Reclamation:** Once the last well has been drilled, then the pad will be interim reclaimed to a reduced working surface area. The reclaimed area will be recontoured and reseeded to match preconstruction grades.

**Final Reclamation:** Once the last well is plugged, then the pad, CTB, and new road will be reclaimed within 6 months of plugging. Disturbed areas will be recontoured to match pre- construction grades. Soil and brush will be evenly spread over disturbed areas and harrowed on the contour. Disturbed areas will be seeded in accordance with BLM requirements. Road will be blocked. Noxious weeds will be controlled.

<b>APPROXIMATE SURFACE DISTURBANCE AREAS</b>	<b>DISTANCE</b>	<b>ACRES</b>
WELL SITE DISTURBANCE	NA	6.118
CTB SITE DISTURBANCE	NA	3.253
10' WIDE POWER LINE R-O-W DISTURBANCE	83'	0.019
10' WIDE POWER LINE TO CTB R-O-W DISTURBANCE	90'	0.021
30' WIDE FLOWLINE R-O-W DISTURBANCE	244'	0.168
30' WIDE ROAD "A" PERMANENT ROAD R-O-W DISTURBANCE	63'	0.043
30' WIDE ROAD "B" PERMANENT ROAD R-O-W DISTURBANCE	62'	0.043
30' WIDE ROAD "C" PERMANENT ROAD TO CTB R-O-W DISTURBANCE	70'	0.048
<b>TOTAL SURFACE USE AREA:</b>		<b>9.713</b>

**11. Surface Ownership**

**Well site:**

**Surface owner:** State of New Mexico

**Contact/Office location:**

State of New Mexico  
 P.O. Box 1148  
 Santa Fe, NM 87504  
 505-827-5760

**Roads (New/Existing):**

**Surface owner:** State of New Mexico

**Contact/Office location:**

State of New Mexico  
 P.O. Box 1148  
 Santa Fe, NM 87504  
 505-827-5760



Ascent Energy, LLC  
Pony Express Pad 2  
NENW, SEC 16, T20S, R33E, N.M.P.M.  
Lea County, New Mexico

## **12. Additional Information**

An onsite inspection was conducted for Pony Express Pad 2 on January 29, 2020. In attendance at the inspection were the following individuals:

<b>Name</b>	<b>Agency/Company</b>
Jeffery Roberts	Bureau of Land Management
Chaz Sartin	Bureau of Land Management
Jim Rutley	Bureau of Land Management
Ben Metz	Ascent Energy, LLC
Gema Volek	Ascent Energy, LLC
Amy Doebele	UELS, LLC
Bryan Bergstresser	UELS, LLC
Shane Lobdell	UELS, LLC
Michael Daniels	UELS, LLC

Field representative will be:

Gema Volek  
Drilling Manager  
Ascent Energy, LLC  
1125 17<sup>th</sup> St., Suite 410  
Denver, CO 80202  
Office: (720) 710-8999  
Cell: (785) 312-2092



## Planning Report

<b>Database:</b>	Database 1	<b>Local Co-ordinate Reference:</b>	Well PONY EXPRESS FED COM 706H
<b>Company:</b>	ASCENT ENERGY	<b>TVD Reference:</b>	KB 25' @ 3557.00usft
<b>Project:</b>	LEA COUNTY, NEW MEXICO (NAD 83) (GRID)	<b>MD Reference:</b>	KB 25' @ 3557.00usft
<b>Site:</b>	SEC. 16 T20S R33E N.M.P.M. (GRID)	<b>North Reference:</b>	Grid
<b>Well:</b>	PONY EXPRESS FED COM 706H	<b>Survey Calculation Method:</b>	Minimum Curvature
<b>Wellbore:</b>	ORIGINAL WELLBORE		
<b>Design:</b>	PROPOSAL #1		

## Planned Survey

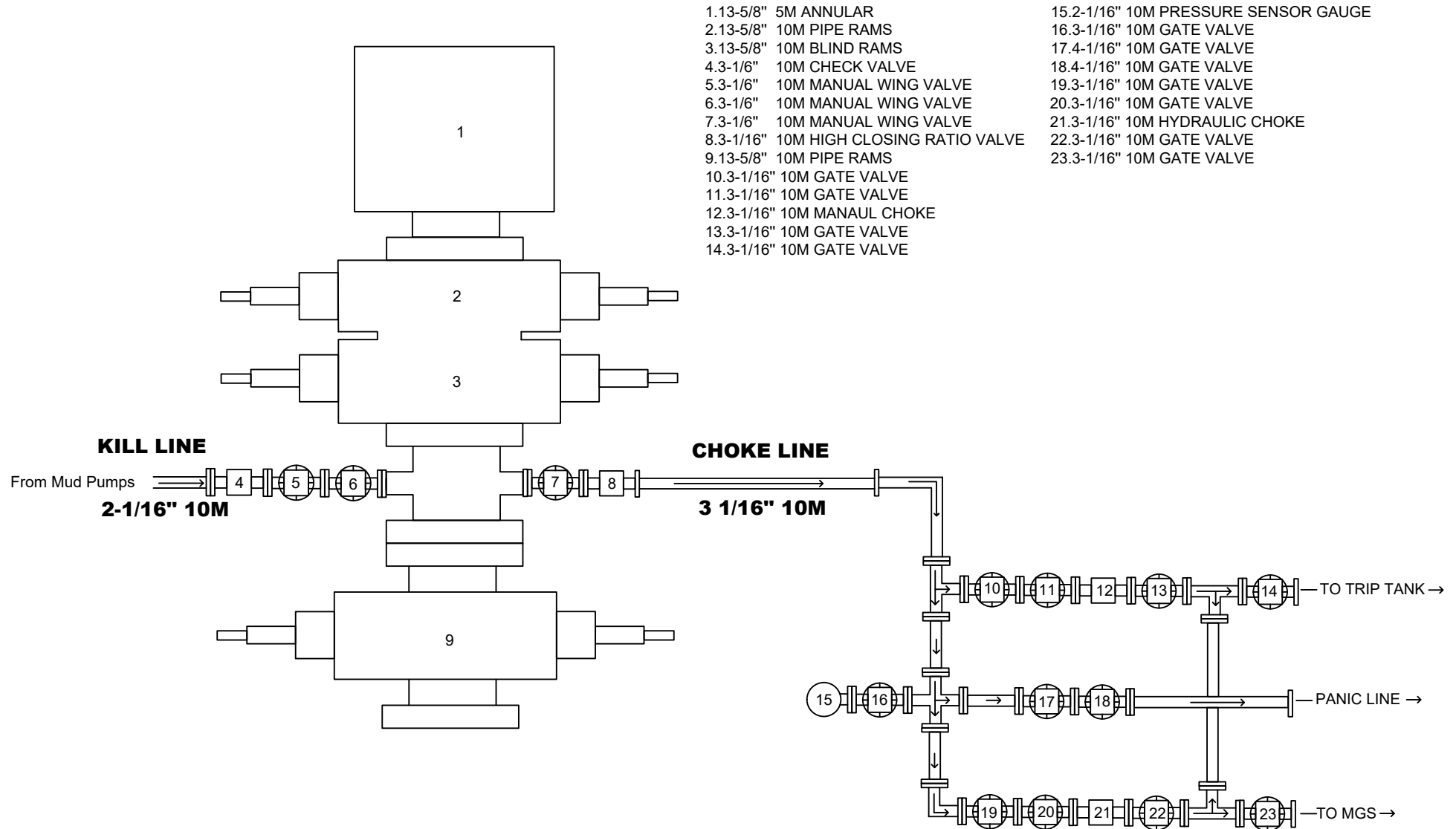
MD (usft)	Inc (°)	Azi (°)	TVD (usft)	SS (usft)	+N/-S (usft)	+E/-W (usft)	Vertical Section (usft)	Dogleg Rate (°/100usft)	Build Rate (°/100usft)	Turn Rate (°/100usft)
20,800.00	88.69	179.61	11,938.80	-8,381.80	-8,926.98	218.89	8,928.27	0.00	0.00	0.00
20,900.00	88.69	179.61	11,941.09	-8,384.09	-9,026.95	219.58	9,028.24	0.00	0.00	0.00
21,000.00	88.69	179.61	11,943.39	-8,386.39	-9,126.93	220.27	9,128.21	0.00	0.00	0.00
21,100.00	88.69	179.61	11,945.68	-8,388.68	-9,226.90	220.96	9,228.19	0.00	0.00	0.00
21,200.00	88.69	179.61	11,947.98	-8,390.98	-9,326.87	221.64	9,328.16	0.00	0.00	0.00
21,300.00	88.69	179.61	11,950.27	-8,393.27	-9,426.84	222.33	9,428.13	0.00	0.00	0.00
21,400.00	88.69	179.61	11,952.57	-8,395.57	-9,526.81	223.02	9,528.11	0.00	0.00	0.00
21,500.00	88.69	179.61	11,954.86	-8,397.86	-9,626.78	223.71	9,628.08	0.00	0.00	0.00
21,600.00	88.69	179.61	11,957.16	-8,400.16	-9,726.75	224.39	9,728.06	0.00	0.00	0.00
21,700.00	88.69	179.61	11,959.45	-8,402.45	-9,826.72	225.08	9,828.03	0.00	0.00	0.00
21,800.00	88.69	179.61	11,961.75	-8,404.75	-9,926.70	225.77	9,928.00	0.00	0.00	0.00
21,900.00	88.69	179.61	11,964.04	-8,407.04	-10,026.67	226.45	10,027.98	0.00	0.00	0.00
<b>LTP: 100ft FSL &amp; 1650ft FWL of Sec 21</b>										
<b>21,978.93</b>	<b>88.69</b>	<b>179.61</b>	<b>11,965.85</b>	<b>-8,408.85</b>	<b>-10,105.57</b>	<b>227.00</b>	<b>10,106.89</b>	<b>0.00</b>	<b>0.00</b>	<b>0.00</b>
22,000.00	88.69	179.61	11,966.34	-8,409.34	-10,126.64	227.14	10,127.95	0.00	0.00	0.00
<b>BHL: 50ft FSL &amp; 1650ft FWL of Sec 21</b>										
<b>22,028.94</b>	<b>88.69</b>	<b>179.61</b>	<b>11,967.00</b>	<b>-8,410.00</b>	<b>-10,155.57</b>	<b>227.34</b>	<b>10,156.88</b>	<b>0.00</b>	<b>0.00</b>	<b>0.00</b>

## Formations

MD (usft)	TVD (usft)	Name	Lithology	Dip (°)	Dip Direction (°)
1,232.00	1,232.00	RSTLR		0.00	
1,572.00	1,572.00	SALDO		0.00	
2,827.24	2,827.00	BASE_SALADO_SALTS		0.00	
2,852.33	2,852.00	TANSIL		0.00	
3,028.60	3,027.00	YATES		0.00	
3,283.19	3,277.00	CAPITAN_REEF_TOP		0.00	
5,256.85	5,217.00	TOP_DELAWARE_SAND		0.00	
5,326.85	5,287.00	CHERRY_CANYON		0.00	
6,641.85	6,602.00	BRUSHY_CANYON		0.00	
8,191.85	8,152.00	BSPG_LIME		0.00	
8,319.85	8,280.00	AVLN		0.00	
8,726.85	8,687.00	LEONARD_B		0.00	
9,271.85	9,232.00	1ST_BSPG_SND		0.00	
9,556.85	9,517.00	2ND_BSPG		0.00	
9,786.85	9,747.00	2ND_BSPG_SND		0.00	
10,336.85	10,297.00	3RD_BSPG		0.00	
10,701.85	10,662.00	3RD BSPG S		0.00	
11,011.85	10,972.00	WC A		0.00	

## Ascent Energy

## 5M BOPE &amp; CHOKE MANIFOLD DIAGRAM





## **Blowout Prevention and Control Well Kick: Shut-In Procedures**

### **Primary Kick Indicators**

If any primary kick indicators are observed, report them IMMEDIATELY TO THE DRILLER and initiate the proper shut-in procedures.

1. Increase flow rate.
2. Pit volume gain.
3. Well flows with pump off.
4. Hole not taking proper amount of mud on trips.

### **If a kick occurs while drilling:**

1. Raise the Kelly until a tool joint is above the rotary table.
2. Stop the mud pumps.
3. Open the hydraulic gate valve.
4. Close the annular preventer.
5. Close the hydraulic choke.
6. Notify the Drill Site Manager and Drilling Manager.
7. Read and record:
  - a. Shut-in drill pipe pressure,
  - b. Shut-in annulus pressure, and
  - c. Pit gain.
8. Prepare the well-killing spreadsheet.

### **If a kick occurs during a trip:**

1. Set the top tool joint on the slips.
2. Install and make up a full-opening, full opened safety valve in the fill pipe.
3. Close the safety valve.
4. Open the hydraulic gate valve.
5. Close the annular preventer.
6. Close the hydraulic choke.
7. Notify the Drill Site Manager and Drilling Manager.
8. Pick up the Kelly and make it up.
9. Open the safety valve.
10. Read and record:
  - a. Shut-in drill pipe pressure,
  - b. Shut-in casing pressure, and
  - c. Pit gain.
11. Prepare the well-killing spreadsheet.

Ascent Energy, LLC  
Blowout Prevention and Control  
Well Kick Shut-In Procedures

**It is assumed the hydraulic choke is always open while drilling or tripping.**

**Note: check all lines and valves for leaks after the well has been shut-in.**

**Crewmember Stations for well kicks after the well has been shut-in:**

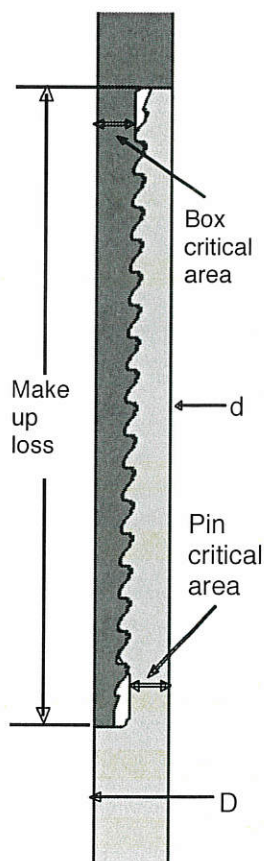
Crewmember	Station
Driller	On the brake.
Derrickman	Check pumps, line up mud and mixing equipment, check mud weight in pits.
Motorman	On hydraulic closing unit.
Floorhand #1	On hydraulic choke control panel to watch and record shut-in procedures.
Floorhand #2	Check BOPs, choke manifold, etc. for leaks then go to floor with driller.
Toolpusher	Make sure all crewmembers carry out their assignments.



<b>Metal One Corp.</b>  <b>Metal One</b>	<b>FLUSHMAX-III</b>  <b>Connection Data Sheet</b>	Page	44-O
		Date	25-Jan-17
		Rev.	N - 1

**Geometry****Imperial****S.I.****Pipe Body**

Grade	P110		P110	
Pipe OD ( D )	7 5/8	in	193.68	mm
Weight	29.70	lb/ft	44.20	kg/m
Actual weight	29.04		43.21	kg/m
Wall Thickness ( t )	0.375	in	9.53	mm
Pipe ID ( d )	6.875	in	174.63	mm
Pipe body cross section	8.537	in <sup>2</sup>	5,508	mm <sup>2</sup>
Drift Dia.	6.750	in	171.45	mm

**FLUSHMAX-III****Connection**

Box OD ( W )	7.625	in	193.68	mm
PIN ID	6.875	in	174.63	mm
Make up Loss	3.040	in	77.22	mm
Box Critical Area	4.424	in <sup>2</sup>	2854	mm <sup>2</sup>
Joint load efficiency	60	%	60	%
Thread Taper	1 / 16 ( 3/4" per ft )			
Number of Threads	5 TPI			

**Performance****Performance Properties for Pipe Body**

S.M.Y.S.	939	kips	4,177	kN
M.I.Y.P.	9,470	psi	65.31	MPa
Collapse Strength	5,350	psi	36.90	MPa

Note S.M.Y.S.= Specified Minimum YIELD Strength of Pipe body  
M.I.Y.P. = Minimum Internal Yield Pressure of Pipe body

**Performance Properties for Connection**

Tensile Yield load	563 kips ( 60% of S.M.Y.S. )
Min. Compression Yield	563 kips ( 60% of S.M.Y.S. )
Internal Pressure	7,580 psi ( 80% of M.I.Y.P. )
External Pressure	100% of Collapse Strength
Max. DLS ( deg. /100ft)	25

**Recommended Torque**

Min.	15,500	ft-lb	21,000	N-m
Opti.	17,200	ft-lb	23,300	N-m
Max.	18,900	ft-lb	25,600	N-m
Operational Max.	23,600	ft-lb	32,000	N-m

Note : Operational Max. torque can be applied for high torque application

**Legal Notice**

The use of this information is at the reader/user's risk and no warranty is implied or expressed by Metal One Corporation or its parents, subsidiaries or affiliates (herein collectively referred to as "Metal One") with respect to the use of information contained herein. The information provided on this Connection Data Sheet is for informational purposes only, and was prepared by reference to engineering information that is specific to the subject products, without regard to safety-related factors, all of which are the sole responsibility of the operators and users of the subject connectors. Metal One assumes no responsibility for any errors with respect to this information.

Statements regarding the suitability of products for certain types of applications are based on Metal One's knowledge of typical requirements that are often placed on Metal One products in standard well configurations. Such statements are not binding statements about the suitability of products for a particular application. It is the customer's responsibility to validate that a particular product with the properties described in the product specification is suitable for use in a particular application.

The products described in this Connection Data Sheet are not recommended for use in deep water offshore applications. For more information, please refer to [http://www.metalone.com/images/topWebsiteTerms\\_Active\\_20333287\\_1.pdf](http://www.metalone.com/images/topWebsiteTerms_Active_20333287_1.pdf) the contents of which are incorporated by reference into this



<b>Metal One Corp.</b>  <b>Metal One</b>	<b>GEOCONN</b> <b>Connection Data Sheet</b>	Page	32 - R
		Date	5-Oct-16
		Rev.	N-0

### Geometry

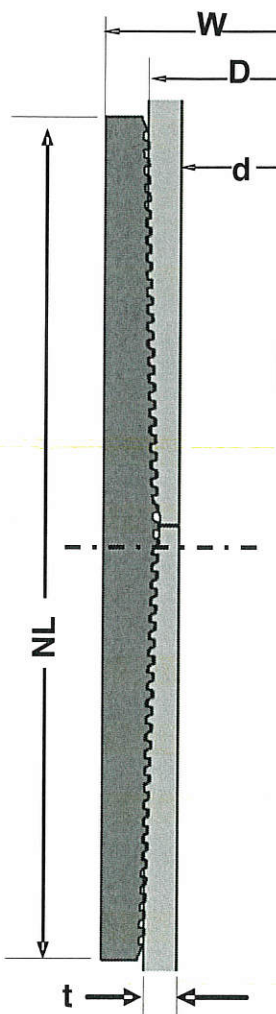
Imperial

S.I.

#### Pipe Body

Grade	P110		P110	
Pipe OD ( D )	5 1/2	in	139.70	mm
Weight	20.00	lb/ft	29.76	kg/m
Wall Thickness ( t )	0.361	in	9.17	mm
Pipe ID ( d )	4.778	in	121.36	mm
Drift Dia.	4.653	in	118.19	mm

**GEOCONN**



#### Connection

Coupling OD ( W )	6.050	in	153.67	mm
Coupling Length ( NL )	8.350	in	212.09	mm
Make up Loss	4.125	in	104.78	mm
Pipe Critical Area	5.83	in <sup>2</sup>	3,758	mm <sup>2</sup>
Box Critical Area	6.10	in <sup>2</sup>	3,935	mm <sup>2</sup>
Thread Taper	1 / 16 ( 3/4" per ft )			
Number of Threads	5 TPI			

### Performance

#### Performance Properties for Pipe Body

S.M.Y.S.	641	kips	2,850	kN
M.I.Y.P.	12,640	psi	87.17	MPa
Collapse Strength	11,100	psi	76.55	MPa

Note S.M.Y.S.= Specified Minimum YIELD Strength of Pipe body  
M.I.Y.P. = Minimum Internal Yield Pressure of Pipe body

#### Performance Properties for Connection

Min. Connection Joint Strength	100% of S.M.Y.S.
Min. Compression Yield	100% of S.M.Y.S.
Internal Pressure	100% of M.I.Y.P.
External Pressure	100% of Collapse Strength
Max. DLS ( deg. /100ft)	>90

#### Recommended Torque

Min.	14,600	ft-lb	19,700	N-m
Opti.	16,200	ft-lb	21,900	N-m
Max.	17,800	ft-lb	24,100	N-m
Operational Max.	19,500	ft-lb	26,400	N-m

Note : Operational Max. torque can be applied for high torque application

Connection Yield Torque	22,900	ft-lb	31,000	N-m
-------------------------	--------	-------	--------	-----

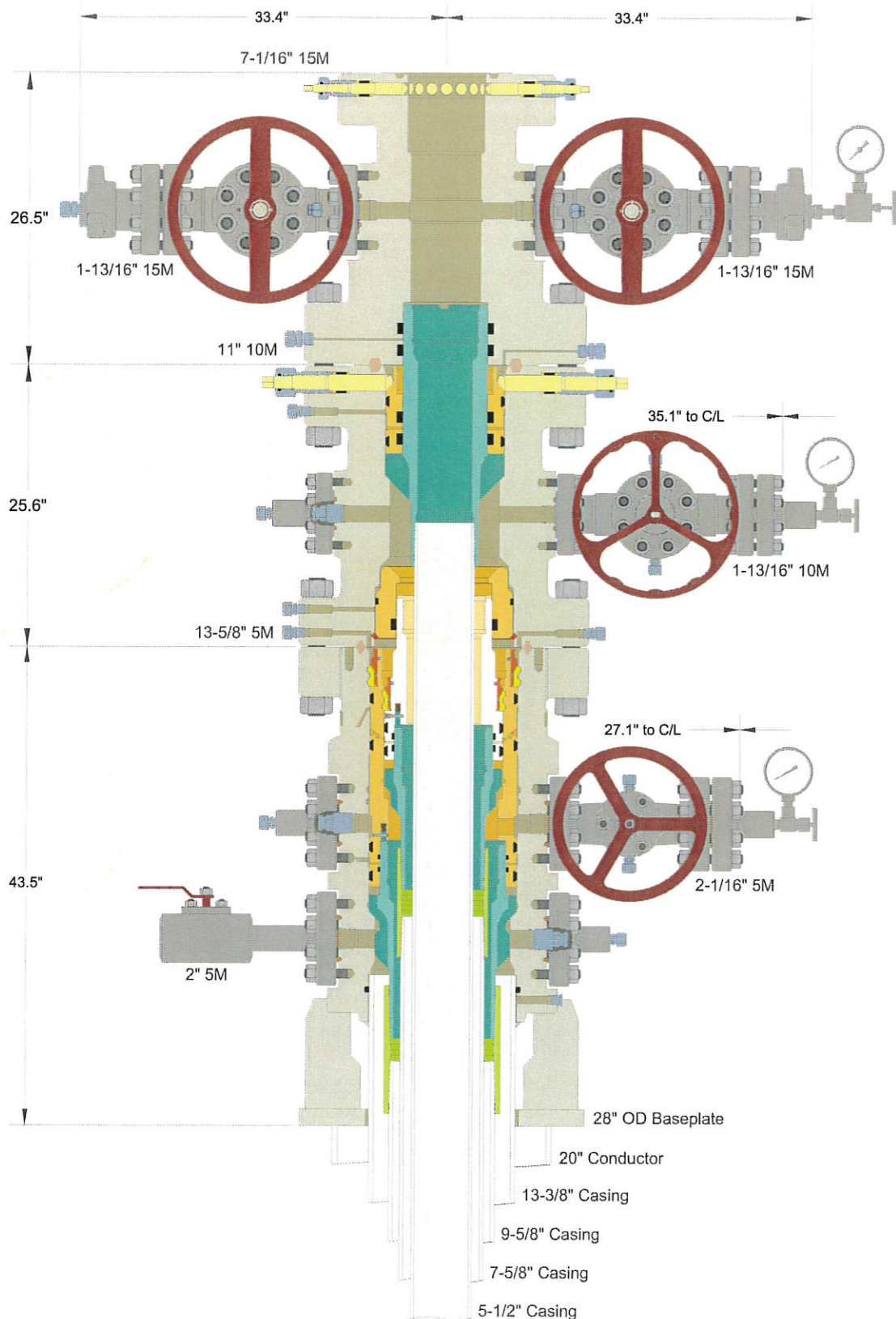
#### Legal Notice

The use of this information is at the reader/user's risk and no warranty is implied or expressed by Metal One Corporation or its parents, subsidiaries or affiliates (herein collectively referred to as "Metal One") with respect to the use of information contained herein. The information provided on this Connection Data Sheet is for informational purposes only, and was prepared by reference to engineering information that is specific to the subject products, without regard to safety-related factors, all of which are the sole responsibility of the operators and users of the subject connectors. Metal One assumes no responsibility for any errors with respect to this information.

Statements regarding the suitability of products for certain types of applications are based on Metal One's knowledge of typical requirements that are often placed on Metal One products in standard well configurations. Such statements are not binding statements about the suitability of products for a particular application. It is the customer's responsibility to validate that a particular product with the properties described in the product specification is suitable for use in a particular application.

The products described in this Connection Data Sheet are not recommended for use in deep water offshore applications. For more information, please refer to [http://www.mtlo.co.jp/mo-con/images/top/WebsiteTerms\\_Active\\_20333287\\_1.pdf](http://www.mtlo.co.jp/mo-con/images/top/WebsiteTerms_Active_20333287_1.pdf) the contents of which are incorporated by reference into this Connection Data Sheet.





INFORMATION CONTAINED HEREIN IS THE PROPERTY OF CACTUS WELLHEAD, LLC. REPRODUCTION, DISCLOSURE, OR USE THEREOF IS PERMISSIBLE ONLY AS PROVIDED BY CONTRACT OR AS EXPRESSLY AUTHORIZED BY CACTUS WELLHEAD, LLC.

## CACTUS WELLHEAD LLC

13-3/8" x 9-5/8" x 7-5/8" x 5-1/2" 5M MBU-3T Wellhead System  
 With 13-5/8" 5M x 11" 10M CTH-P-HPS-F Tubing Spool  
 And 11" 10M x 7-1/16" 15M CTH-DBLHPS-SB Tubing Head

ASCENT ENERGY, LLC  
 DELAWARE BASIN

DRAWN	DLE	06APR18
APPRV		
DRAWING NO.	ODE0002219	

**District I**

1625 N. French Dr., Hobbs, NM 88240  
 Phone:(575) 393-6161 Fax:(575) 393-0720

**District II**

811 S. First St., Artesia, NM 88210  
 Phone:(575) 748-1283 Fax:(575) 748-9720

**District III**

1000 Rio Brazos Rd., Aztec, NM 87410  
 Phone:(505) 334-6178 Fax:(505) 334-6170

**District IV**

1220 S. St Francis Dr., Santa Fe, NM 87505  
 Phone:(505) 476-3470 Fax:(505) 476-3462

**State of New Mexico**  
**Energy, Minerals and Natural Resources**  
**Oil Conservation Division**  
**1220 S. St Francis Dr.**  
**Santa Fe, NM 87505**

CONDITIONS

Action 26790

**CONDITIONS**

Operator: ASCENT ENERGY, LLC. 1125 17th St Denver, CO 80202	OGRID: 325830
	Action Number: 26790
	Action Type: [C-101] BLM - Federal/Indian Land Lease (Form 3160-3)

**CONDITIONS**

Created By	Condition	Condition Date
pkautz	Will require a File As Drilled C-102 and a Directional Survey with the C-104	6/16/2021
pkautz	Once the well is spud, to prevent ground water contamination through whole or partial conduits from the surface, the operator shall drill without interruption through the fresh water zone or zones and shall immediately set in cement the water protection string	6/16/2021