

Form 3160-4
(August 2007)

UNITED STATES
DEPARTMENT OF THE INTERIOR
BUREAU OF LAND MANAGEMENT

Operator Copy

FORM APPROVED
OMB No. 1004-0137
Expires: July 31, 2010

WELL COMPLETION OR RECOMPLETION REPORT AND LOG

5. Lease Serial No.
NMLC062269A

6. If Indian, Allottee or Tribe Name

7. Unit or CA Agreement Name and No.

8. Lease Name and Well No.
GHOST RIDER 22-15 FEDERAL COM 205H

9. API Well No.
30-025-45772-00-S1

10. Field and Pool, or Exploratory
TRISTE DRAW-BONE SPRING

11. Sec., T., R., M., or Block and Survey
or Area Sec 22 T24S R32E Mer NMP

12. County or Parish
LEA

13. State
NM

17. Elevations (DF, KB, RT, GL)*
3593 GL

14. Date Spudded
05/14/2019

15. Date T.D. Reached
08/12/2019

16. Date Completed
☐ D & A ☒ Ready to Prod.
12/11/2019

18. Total Depth: MD
TVD 18139

19. Plug Back T.D.: MD
TVD 18086

20. Depth Bridge Plug Set: MD
TVD

21. Type Electric & Other Mechanical Logs Run (Submit copy of each)
NONE

22. Was well cored? ☒ No ☐ Yes (Submit analysis)
Was DST run? ☒ No ☐ Yes (Submit analysis)
Directional Survey? ☐ No ☒ Yes (Submit analysis)

23. Casing and Liner Record (Report all strings set in well)

Hole Size	Size/Grade	Wt. (#/ft.)	Top (MD)	Bottom (MD)	Stage Cementer Depth	No. of Sk. & Type of Cement	Slurry Vol. (BBL)	Cement Top*	Amount Pulled
17.500	13.375 J-55	54.5	0	1079		900		0	
12.250	9.625 J-55	40.0	0	4821		1200		0	
8.750	5.500 CYP-110	20.0	0	18136		2775		0	

24. Tubing Record

Size	Depth Set (MD)	Packer Depth (MD)	Size	Depth Set (MD)	Packer Depth (MD)	Size	Depth Set (MD)	Packer Depth (MD)
2.875	10100							

25. Producing Intervals

Formation	Top	Bottom	Perforated Interval	Size	No. Holes	Perf. Status
A) BONE SPRING	8773	18139	10737 TO 18009	0.000	1230	PRODUCING
B)						
C)						
D)						

26. Perforation Record

27. Acid, Fracture, Treatment, Cement Squeeze, Etc.

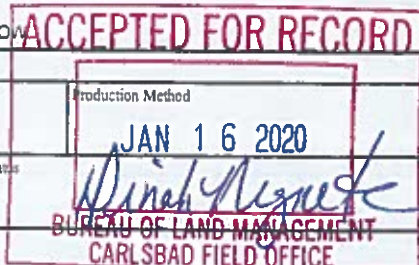
Depth Interval	Amount and Type of Material
10737 TO 18039	15.406.060# PROPANT 440 BBL ACID

28. Production - Interval A

Date First Produced	Test Date	Hours Tested	Test Production	Oil BBL	Gas MCF	Water BBL	Oil Gravity Corr. API	Gas Gravity	Production Method
12/11/2019	12/15/2019	24	→	1295.0	2007.0	3662.0			GAS LIFT
Choke Size	Tbg. Press Flwg. SI	Csg. Press	24 Hr. Rate	Oil BBL	Gas MCF	Water BBL	Gas Oil Ratio	Well Status	
			→	1295	2007	3662		POW	

28a. Production - Interval B

Date First Produced	Test Date	Hours Tested	Test Production	Oil BBL	Gas MCF	Water BBL	Oil Gravity Corr. API	Gas Gravity	Production Method
			→						
Choke Size	Tbg. Press Flwg. SI	Csg. Press	24 Hr. Rate	Oil BBL	Gas MCF	Water BBL	Gas Oil Ratio	Well Status	
			→						



(See Instructions and spaces for additional data on reverse side)

ELECTRONIC SUBMISSION #496743 VERIFIED BY THE BLM WELL INFORMATION SYSTEM

** BLM REVISED ** BLM REVISED ** BLM REVISED ** BLM REVISED ** BLM REVISED **

Reclamation Due: 6/11/2020

28b. Production - Interval C

Date First Produced	Test Date	Hours Tested	Test Production	Oil BBL	Gas MCF	Water BBL	Oil Gravity Corr API	Gas Gravity	Production Method
			→						
Choke Size	Tbg. Press. Flwg. SI	Csg. Press.	24 Hr. Rate	Oil BBL	Gas MCF	Water BBL	Gas Oil Ratio	Well Status	
			→						

28c. Production - Interval D

Date First Produced	Test Date	Hours Tested	Test Production	Oil BBL	Gas MCF	Water BBL	Oil Gravity Corr API	Gas Gravity	Production Method
			→						
Choke Size	Tbg. Press. Flwg. SI	Csg. Press.	24 Hr. Rate	Oil BBL	Gas MCF	Water BBL	Gas Oil Ratio	Well Status	
			→						

29. Disposition of Gas(Sold, used for fuel, vented, etc.)
SOLD

30. Summary of Porous Zones (Include Aquifers):

Show all important zones of porosity and contents thereof: Cored intervals and all drill-stem tests, including depth interval tested, cushion used, time tool open, flowing and shut-in pressures and recoveries.

31. Formation (Log) Markers

Formation	Top	Bottom	Descriptions, Contents, etc.	Name	Top
					Meas. Depth
AVALON	0	1035	ALLUVIUM	AVALON	0
RUSTLER	1035	4850	SALT	RUSTLER	1035
BASE OF SALT	4850	4850	SALT	BASE OF SALT	4850
DELAWARE	4850	8773	SANDSTONE	DELAWARE	4850
BONE SPRING	8773		MIXED CARBONATE O/G	BONE SPRING	8773

32. Additional remarks (include plugging procedure):

33. Circle enclosed attachments:

- | | | | |
|---|--------------------|---------------|-----------------------|
| 1. Electrical Mechanical Logs (1 full set req'd) | 2. Geologic Report | 3. DST Report | 4. Directional Survey |
| 5. Sundry Notice for plugging and cement verification | 6. Core Analysis | 7. Other: | |

34. I hereby certify that the foregoing and attached information is complete and correct as determined from all available records (see attached instructions):

Electronic Submission #496743 Verified by the BLM Well Information System.
For APACHE CORPORATION, sent to the Hobbs
Committed to AFMSS for processing by DEBORAH HAM on 01/14/2020 (20DMH0029SE)

Name (please print) REESA FISHER

Title SR STAFF REGULATORY ANALYST

Signature (Electronic Submission)

Date 12/20/2019

Title 18 U.S.C. Section 1001 and Title 43 U.S.C. Section 1212, make it a crime for any person knowingly and willfully to make to any department or agency of the United States any false, fictitious or fraudulent statements or representations as to any matter within its jurisdiction.

** REVISED ** REVISED ** REVISED ** REVISED ** REVISED ** REVISED ** REVISED **

District I
1625 N. French Dr., Hobbs, NM 88240
Phone: (575) 393-6161 Fax: (575) 393-0720
District II
811 S. First St., Artesia, NM 88210
Phone: (575) 748-1283 Fax: (575) 748-9720
District III
1000 Rio Brazos Road, Aztec, NM 87410
Phone: (505) 334-6178 Fax: (505) 334-6170
District IV
1220 S. St. Francis Dr., Santa Fe, NM 87505
Phone: (505) 476-3460 Fax: (505) 476-3462

State of New Mexico
Energy, Minerals & Natural Resources Department
OIL CONSERVATION DIVISION
1220 South St. Francis Dr.
Santa Fe, NM 87505

Form C-102
Revised August 1, 2011
Submit one copy to appropriate
District Office

☐ AMENDED REPORT

RECEIVED
DEC 30 2019

WELL LOCATION AND ACREAGE DEDICATION PLAT

1 API Number 30-025-45772		2 Pool Code 98603		3 Pool Name TRISTE DRAW; BONE SPRING	
4 Property Code 325016		5 Property Name GHOST RIDER 22-15 FEDERAL COM			6 Well Number 205H
7 GRID NO. 873		8 Operator Name APACHE CORPORATION			9 Elevation 3593'

10 Surface Location

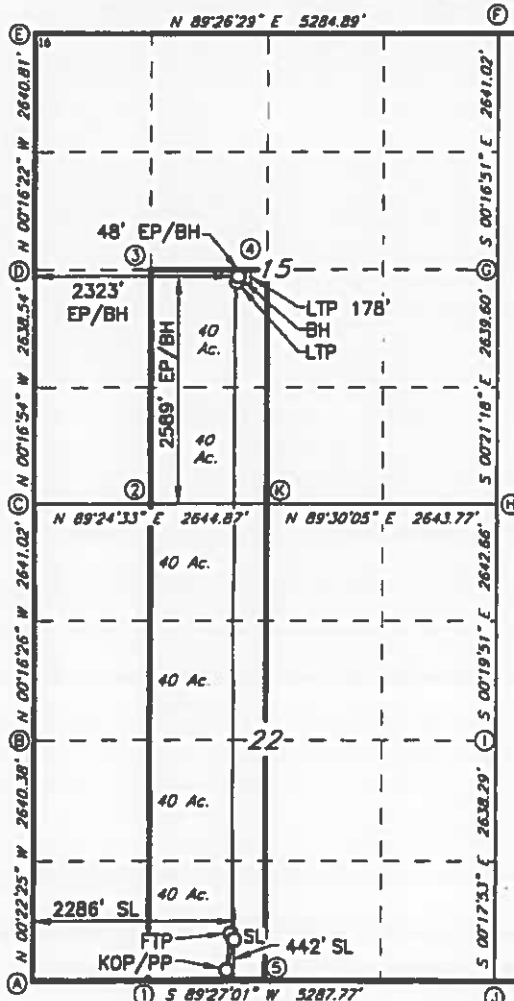
UL or lot no.	Section	Township	Range	Lot Idn	Feet from the	North/South line	Feet From the	East/West line	County
N	22	24S	32E		442	SOUTH	2286	WEST	LEA

11 Bottom Hole Location If Different From Surface

UL or lot no.	Section	Township	Range	Lot Idn	Feet from the	North/South line	Feet from the	East/West line	County
K	15	24S	32E		2589	SOUTH	2323	WEST	LEA

12 Dedicated Acres 240	13 Joint or Infill	14 Consolidation Code	15 Order No.
----------------------------------	--------------------	-----------------------	--------------

No allowable will be assigned to this completion until all interest have been consolidated or a non-standard unit has been approved by the division.



GEOLOGIC DATA
NAD 83 GRID - NM EAST
SURFACE LOCATION (SL)
N: 436052.2 - E: 748475.5
LAT: 32.1970115° N
LONG: 103.8638815° W
KICK OFF POINT (KOP)
POINT OF PENETRATION (PP)
113' FSL - 2200' FWL
(SEC. 22)
N: 435723.1 - E: 748394.5
LAT: 32.1961084° N
LONG: 103.8638998° W
MD: 10112.0 - TVD: 10097.1
FIRST TAKE POINT (FTP)
574' FSL - 2241' FWL
(SEC. 22)
N: 436084.5 - E: 748433.6
LAT: 32.1971011° N
LONG: 103.8638282° W
MD: 10737.0 - TVD: 10552.8
LAST TAKE POINT (LTP)
2459' FSL - 2321' FWL
(SEC. 15)
N: 443351.2 - E: 748474.6
LAT: 32.2170747° N
LONG: 103.8635471° W
MD: 18009.0 - TVD: 10520.6
EXIT POINT / BOTTOM HOLE
(EP/BH)
N: 443481.2 - E: 748475.7
LAT: 32.2174319° N
LONG: 103.8635411° W
MD: 18139.0 - TVD: 10517.1

CORNER DATA
NAD 83 GRID - NM EAST
A: FOUND BRASS CAP "1916"
N 435388.7 - E 748198.0
B: FOUND BRASS CAP "1916"
N 438228.5 - E 748178.8
C: FOUND BRASS CAP "1916"
N: 440869.0 - E: 748168.1
D: FOUND BRASS CAP "1916"
N 443308.9 - E 748153.2
E: FOUND BRASS CAP "1916"
N 448147.2 - E 748140.6
F: CALCULATED CORNER
N: 446198.7 - E: 751424.1
G: FOUND BRASS CAP "1916"
N 443558.2 - E 751437.1
H: FOUND BRASS CAP "1916"
N 440919.2 - E 751453.4
I: FOUND BRASS CAP "1916"
N 438277.2 - E 751468.7
J: FOUND BRASS CAP "1916"
N 435639.5 - E 751482.4
K: FOUND BRASS CAP "1916"
N 440898.2 - E 748810.3
CALCULATED POINTS
1: N 435601.4 - E 747517.6
2: N 440882.6 - E 747488.2
3: N 443519.8 - E 747474.9
4: N 443532.6 - E 748798.3
5: N 435614.1 - E 748639.2

17 OPERATOR CERTIFICATION
I hereby certify that the information contained herein is true and complete to the best of my knowledge and belief, and that this organization either owns a working interest or undivided mineral interest in the land including the proposed bottom hole location or has a right to drill this well at this location pursuant to a contract with an owner of such a mineral or working interest, or to a voluntary pooling agreement or a compulsory pooling order heretofore entered by the division.
Reesa Fisher 12/17/19
Signature Date
REESA FISHER
Printed Name
Reesa.Fisher@apachecorp.com
E-mail Address

18 SURVEYOR CERTIFICATION
I hereby certify that the well location shown on this plat was plotted from field notes of actual surveys made by me or under my supervision, and that the same is true and correct to the best of my belief.
8-29-2019
Date of Survey
Signature and Seal of JEFFREY L. FANSLER
10034
Professional Surveyor
10034
Certificate Number
REV. 10/29/2019 - KOP/FTP/LTP

Job No.: LS1805672ADR1

District I

1625 N. French Dr., Hobbs, NM 88240
Phone:(575) 393-6161 Fax:(575) 393-0720

District II

811 S. First St., Artesia, NM 88210
Phone:(575) 748-1283 Fax:(575) 748-9720

District III

1000 Rio Brazos Rd., Aztec, NM 87410
Phone:(505) 334-6178 Fax:(505) 334-6170

District IV

1220 S. St Francis Dr., Santa Fe, NM 87505
Phone:(505) 476-3470 Fax:(505) 476-3462

State of New Mexico
Energy, Minerals and Natural Resources
Oil Conservation Division
1220 S. St Francis Dr.
Santa Fe, NM 87505

ACKNOWLEDGMENTS

Action 34193

ACKNOWLEDGMENTS

Operator: APACHE CORPORATION 303 Veterans Airpark Ln Midland, TX 79705	OGRID: 873
	Action Number: 34193
	Action Type: [C-105] Well (Re)Completion (C-105)

ACKNOWLEDGMENTS

<input checked="" type="checkbox"/>	I hereby certify that the required Water Use Report has been, or will be, submitted for this wells completion.
<input checked="" type="checkbox"/>	I hereby certify that the required FracFocus disclosure has been, or will be, submitted for this wells completion.

District I

1625 N. French Dr., Hobbs, NM 88240
Phone:(575) 393-6161 Fax:(575) 393-0720

District II

811 S. First St., Artesia, NM 88210
Phone:(575) 748-1283 Fax:(575) 748-9720

District III

1000 Rio Brazos Rd., Aztec, NM 87410
Phone:(505) 334-6178 Fax:(505) 334-6170

District IV

1220 S. St Francis Dr., Santa Fe, NM 87505
Phone:(505) 476-3470 Fax:(505) 476-3462

State of New Mexico
Energy, Minerals and Natural Resources
Oil Conservation Division
1220 S. St Francis Dr.
Santa Fe, NM 87505

CONDITIONS

Action 34193

CONDITIONS

Operator: APACHE CORPORATION 303 Veterans Airpark Ln Midland, TX 79705	OGRID: 873
	Action Number: 34193
	Action Type: [C-105] Well (Re)Completion (C-105)

CONDITIONS

Created By	Condition	Condition Date
plmartinez	None	6/29/2021