

District I  
1625 N. French Dr., Hobbs, NM 88240  
District II  
811 S. First St., Artesia, NM 88210  
District III  
1000 Rio Brazos Rd., Aztec, NM 87410  
District IV  
1220 S. St. Francis Dr., Santa Fe, NM 87505

State of New Mexico  
Energy, Minerals & Natural Resources

Form C-104  
Revised August 1, 2011

Oil Conservation Division  
1220 South St. Francis Dr.  
Santa Fe, NM 87505

Submit one copy to appropriate District Office

AMENDED REPORT

**I. REQUEST FOR ALLOWABLE AND AUTHORIZATION TO TRANSPORT**

<sup>1</sup> Operator name and Address SPUR ENERGY PARTNERS LLC 9655 KATY FREEWAY, SUITE 500 HOUSTON, TX 77024		<sup>2</sup> OGRID Number 328947
		<sup>3</sup> Reason for Filing Code/ Effective Date RT 05/26/2021
<sup>4</sup> API Number 30 - 0 15-47697	<sup>5</sup> Pool Name FREN; GLORIETA-YESO	<sup>6</sup> Pool Code 26770
<sup>7</sup> Property Code 329801	<sup>8</sup> Property Name BIG N TASTY STATE COM	<sup>9</sup> Well Number 11H

**II. <sup>10</sup> Surface Location**

Ul or lot no.	Section	Township	Range	Lot Idn	Feet from the	North/South Line	Feet from the	East/West line	County
L	02	17S	31E		2260	SOUTH	60	WEST	EDDY

**<sup>11</sup> Bottom Hole Location**

FTP: 1945' FSL 126' FWL LTP: 1957' FSL 170' FEL

UL or lot no.	Section	Township	Range	Lot Idn	Feet from the	North/South line	Feet from the	East/West line	County
I	02	17S	31E		1957	SOUTH	63	EAST	EDDY

<sup>12</sup> Lse Code S	<sup>13</sup> Producing Method Code P	<sup>14</sup> Gas Connection Date TBD	<sup>15</sup> C-129 Permit Number	<sup>16</sup> C-129 Effective Date	<sup>17</sup> C-129 Expiration Date
-----------------------------	--	--	-----------------------------------	------------------------------------	-------------------------------------

**III. Oil and Gas Transporters**

<sup>18</sup> Transporter OGRID	<sup>19</sup> Transporter Name and Address	<sup>20</sup> O/G/W
221115	FRONTIER FIELD SERVICES, LLC 4200 EAST SKELLY DRIVE, SUITE 700, TULSA, OK 74135	G
33479	HOLLYFRONTIER REFINING & MARKETING 2828 N. HARWOOD, SUITE 1300, DALLAS, TX 75201	O

**IV. Well Completion Data**

<sup>21</sup> Spud Date 02/01/2021	<sup>22</sup> Ready Date 05/26/2021	<sup>23</sup> TD 5424'V/10738'M	<sup>24</sup> PBTD 5424'V/10738'M	<sup>25</sup> Perforations 5637'-10631'	<sup>26</sup> DHC, MC
<sup>27</sup> Hole Size	<sup>28</sup> Casing & Tubing Size	<sup>29</sup> Depth Set		<sup>30</sup> Sacks Cement	
17-1/2"	13-3/8" 54.5# J-55 BUT	710'		560 SXS (CIRC TO SURFACE)	
12-1/4"	9-5/8" 36# J-55 BUT	2365'		665 SXS (CIRC TO SURFACE)	
8-3/4"	7" 32# L-80 BK-HT 5-1/2" 20# L-80 BK-HT	5637' 10738'		1390 SXS (CIRC TO SURFACE)	

**V. Well Test Data**

<sup>31</sup> Date New Oil	<sup>32</sup> Gas Delivery Date	<sup>33</sup> Test Date	<sup>34</sup> Test Length	<sup>35</sup> Tbg. Pressure	<sup>36</sup> Csg. Pressure
<sup>37</sup> Choke Size	<sup>38</sup> Oil	<sup>39</sup> Water	<sup>40</sup> Gas		<sup>41</sup> Test Method

<sup>42</sup> I hereby certify that the rules of the Oil Conservation Division have been complied with and that the information given above is true and complete to the best of my knowledge and belief.

Signature: *Sarah Chapman*  
Printed name: SARAH CHAPMAN  
Title: REGULATORY DIRECTOR  
E-mail Address: SCHAPMAN@SPUREPLLC.COM  
Date: 05/26/2021 Phone: 832-930-8613

OIL CONSERVATION DIVISION  
Approved by: KURT SIMMONS  
Title: NMOCD, SANTA FE  
Approval Date: 07/27/2021  
RT C-104 EXPIRES 08/26/2021

District I  
1625 N. French Dr., Hobbs, NM 88240  
Phone: (575) 393-6161 Fax: (575) 393-0720  
District II  
811 S. First St., Artesia, NM 88210  
Phone: (575) 748-1283 Fax: (575) 748-9720  
District III  
1000 Rio Brazos Road, Aztec, NM 87410  
Phone: (505) 334-6178 Fax: (505) 334-6170  
District IV  
1220 S. St. Francis Dr., Santa Fe, NM 87505  
Phone: (505) 476-3460 Fax: (505) 476-3462

State of New Mexico  
Energy, Minerals & Natural Resources Department  
OIL CONSERVATION DIVISION  
1220 South St. Francis Dr.  
Santa Fe, NM 87505

Form C-102  
Revised August 1, 2011  
Submit one copy to appropriate  
District Office

AMENDED REPORT  
AS-DRILLED

WELL LOCATION AND ACREAGE DEDICATION PLAT

<sup>1</sup> API Number <b>30-015-47697</b>		<sup>2</sup> Pool Code <b>26670</b>		<sup>3</sup> Pool Name <b>FREN; GLORIETA-YESO</b>					
<sup>4</sup> Property Code <b>329801</b>		<sup>5</sup> Property Name <b>BIG 'N TASTY STATE COM</b>				<sup>6</sup> Well Number <b>11H</b>			
<sup>7</sup> OGRID NO. <b>328947</b>		<sup>8</sup> Operator Name <b>SPUR ENEGY PARTNERS LLC</b>				<sup>9</sup> Elevation <b>3976'</b>			
<sup>10</sup> Surface Location									
UL or lot no. <b>L</b>	Section <b>2</b>	Township <b>17S</b>	Range <b>31E</b>	Lot Idn	Feet from the <b>2260</b>	North/South line <b>SOUTH</b>	Feet From the <b>60</b>	East/West line <b>WEST</b>	County <b>EDDY</b>
<sup>11</sup> Bottom Hole Location If Different From Surface									
UL or lot no. <b>I</b>	Section <b>2</b>	Township <b>17S</b>	Range <b>31E</b>	Lot Idn	Feet from the <b>1957</b>	North/South line <b>SOUTH</b>	Feet from the <b>63</b>	East/West line <b>EAST</b>	County <b>EDDY</b>
<sup>12</sup> Dedicated Acres <b>320</b>	<sup>13</sup> Joint or Infill	<sup>14</sup> Consolidation Code	<sup>15</sup> Order No.						

No allowable will be assigned to this completion until all interest have been consolidated or a non-standard unit has been approved by the division.

<p><sup>16</sup> <u>GEODETIC DATA</u> NAD 83 GRID - NM EAST</p> <p><u>SURFACE LOCATION (SL)</u> N: 677890.2 - E: 690137.4 LAT: 32.8626039° N LONG: 103.8487258 W</p> <p><u>FIRST TAKE POINT (FTP)</u> 1945' FSL &amp; 126' FWL N: 677575.8 - E: 690205.2 LAT: 32.8617389° N LONG: 103.8485097 W MD: 5637.0 - TVD: 5316.2</p> <p><u>LAST TAKE POINT (LTP)</u> 1957' FSL &amp; 170' FEL N: 677623.5 - E: 695189.1 LAT: 32.8618060° N LONG: 103.8322781° W MD: 10631.0 - TVD: 5423.3</p>	<p><u>BOTTOM HOLE (BH)</u> N: 677623.7 - E: 695296.1 LAT: 32.8618052° N LONG: 103.8319296° W MD: 10738.0 - TVD: 5423.5</p> <p><u>CORNER DATA</u> NAD 83 GRID - NM EAST</p> <p>A: FOUND 1/2" REBAR N 675594.5 - E 684811.1</p> <p>B: CALCULATED CORNER N 680870.9 - E 684780.1</p> <p>C: FOUND BRASS CAP "1916" N 680888.4 - E 687419.6</p> <p>D: FOUND BRASS CAP "1916" N 680907.6 - E 690060.3</p>	<p>E: FOUND BRASS CAP "1916" N 680926.1 - E 692700.3</p> <p>F: FOUND BRASS CAP "1916" N 680945.0 - E 695340.9</p> <p>G: FOUND BRASS CAP "1916" N 678307.8 - E 695355.0</p> <p>H: FOUND BRASS CAP "1916" N 675668.0 - E 695369.9</p> <p>I: FOUND BRASS CAP "1916" N 675650.7 - E 692730.3</p> <p>J: FOUND BRASS CAP "1916" N 675630.4 - E 690091.1</p> <p>K: FOUND BRASS CAP "1916" N 678270.8 - E 690075.1</p>	<p><sup>17</sup> <b>OPERATOR CERTIFICATION</b> I hereby certify that the information contained herein is true and complete to the best of my knowledge and belief, and that this organization either owns a working interest or unleased mineral interest in the land including the proposed bottom hole location or has a right to drill this well at this location pursuant to a contract with an owner of such a mineral or working interest, or to a voluntary pooling agreement or a compulsory pooling order heretofore entered by the division.</p> <p><i>Sarah Chapman</i> 05/24/2021 Signature Date <b>SARAH CHAPMAN</b></p> <p>Printed Name <b>SCHAPMAN@SPUREPLLC.COM</b> E-mail Address</p>
			<p>LOT 4 39.93 AC</p> <p>LOT 3 39.93 AC</p> <p>LOT 2 39.91 AC</p> <p>LOT 1 39.91 AC</p> <p>LOT 4 39.90 AC</p> <p>LOT 3 39.90 AC</p> <p>LOT 2 39.90 AC</p> <p>LOT 1 39.90 AC</p> <p>3</p> <p>S.L. 60'</p> <p>FTP</p> <p>2260'</p> <p>B.H. 63'</p> <p>LTP</p> <p>1957'</p>

Job No: LS20100605-COMPLETED



# Spur Energy Partners, LLC

Eddy County, NM (NAD 83 - NME)

Big 'n Tasty

#11H

Wellbore #1

Design: Wellbore #1

## Standard Survey Report

22 April, 2021





Survey Report

<b>Company:</b>	Spur Energy Partners, LLC	<b>Local Co-ordinate Reference:</b>	Well #11H
<b>Project:</b>	Eddy County, NM (NAD 83 - NME)	<b>TVD Reference:</b>	RKB = 20' @ 3996.00usft
<b>Site:</b>	Big 'n Tasty	<b>MD Reference:</b>	RKB = 20' @ 3996.00usft
<b>Well:</b>	#11H	<b>North Reference:</b>	Grid
<b>Wellbore:</b>	Wellbore #1	<b>Survey Calculation Method:</b>	Minimum Curvature
<b>Design:</b>	Wellbore #1	<b>Database:</b>	WBDS_SQL_2

<b>Project</b>	Eddy County, NM (NAD 83 - NME)		
<b>Map System:</b>	US State Plane 1983	<b>System Datum:</b>	Mean Sea Level
<b>Geo Datum:</b>	North American Datum 1983		
<b>Map Zone:</b>	New Mexico Eastern Zone		

<b>Site</b>	Big 'n Tasty				
<b>Site Position:</b>		<b>Northing:</b>	677,890.20 usft	<b>Latitude:</b>	32.8626039
<b>From:</b>	Map	<b>Easting:</b>	690,137.40 usft	<b>Longitude:</b>	-103.8487257
<b>Position Uncertainty:</b>	0.00 usft	<b>Slot Radius:</b>	13.200 in	<b>Grid Convergence:</b>	0.263 °

<b>Well</b>	#11H					
<b>Well Position</b>	<b>+N/-S</b>	0.00 usft	<b>Northing:</b>	677,890.20 usft	<b>Latitude:</b>	32.8626039
	<b>+E/-W</b>	0.00 usft	<b>Easting:</b>	690,137.40 usft	<b>Longitude:</b>	-103.8487257
<b>Position Uncertainty</b>		0.00 usft	<b>Wellhead Elevation:</b>	usft	<b>Ground Level:</b>	3,976.00 usft

<b>Wellbore</b>	Wellbore #1				
<b>Magnetics</b>	<b>Model Name</b>	<b>Sample Date</b>	<b>Declination (°)</b>	<b>Dip Angle (°)</b>	<b>Field Strength (nT)</b>
	IGRF2020	4/14/2021	6.744	60.445	47,856.17883012

<b>Design</b>	Wellbore #1				
<b>Audit Notes:</b>					
<b>Version:</b>	1.0	<b>Phase:</b>	ACTUAL	<b>Tie On Depth:</b>	0.00
<b>Vertical Section:</b>	<b>Depth From (TVD) (usft)</b>	<b>+N/-S (usft)</b>	<b>+E/-W (usft)</b>	<b>Direction (°)</b>	
	0.00	0.00	0.00	89.59	

<b>Survey Program</b>	<b>Date</b>	4/22/2021			
<b>From (usft)</b>	<b>To (usft)</b>	<b>Survey (Wellbore)</b>	<b>Tool Name</b>	<b>Description</b>	
12.00	10,738.00	Survey #1 (Wellbore #1)	MWD+IGRF	OWSG MWD + IGRF or WMM	

<b>Survey</b>										
<b>Measured Depth (usft)</b>	<b>Inclination (°)</b>	<b>Azimuth (°)</b>	<b>Vertical Depth (usft)</b>	<b>+N/-S (usft)</b>	<b>+E/-W (usft)</b>	<b>Vertical Section (usft)</b>	<b>Dogleg Rate (°/100ft)</b>	<b>Build Rate (°/100ft)</b>	<b>Turn Rate (°/100ft)</b>	
0.00	0.00	0.00	0.00	0.00	0.00	0.00	0.00	0.00	0.00	
<b>Big 'n Tasty #11H SHL: 2260' FSL &amp; 60' FWL</b>										
12.00	0.00	0.00	12.00	0.00	0.00	0.00	0.00	0.00	0.00	
120.00	0.31	246.58	120.00	-0.12	-0.27	-0.27	0.29	0.29	0.00	
180.00	0.22	216.70	180.00	-0.27	-0.49	-0.49	0.27	-0.15	-49.80	
264.00	0.22	205.36	264.00	-0.55	-0.65	-0.66	0.05	0.00	-13.50	
361.00	1.49	249.48	360.99	-1.16	-1.91	-1.92	1.38	1.31	45.48	
455.00	3.30	243.94	454.90	-2.78	-5.49	-5.51	1.94	1.93	-5.89	
550.00	4.79	240.25	549.66	-5.95	-11.39	-11.43	1.59	1.57	-3.88	
644.00	6.68	237.70	643.19	-10.81	-19.42	-19.49	2.03	2.01	-2.71	
683.00	7.69	236.21	681.88	-13.48	-23.50	-23.60	2.63	2.59	-3.82	



Survey Report

<b>Company:</b>	Spur Energy Partners, LLC	<b>Local Co-ordinate Reference:</b>	Well #11H
<b>Project:</b>	Eddy County, NM (NAD 83 - NME)	<b>TVD Reference:</b>	RKB = 20' @ 3996.00usft
<b>Site:</b>	Big 'n Tasty	<b>MD Reference:</b>	RKB = 20' @ 3996.00usft
<b>Well:</b>	#11H	<b>North Reference:</b>	Grid
<b>Wellbore:</b>	Wellbore #1	<b>Survey Calculation Method:</b>	Minimum Curvature
<b>Design:</b>	Wellbore #1	<b>Database:</b>	WBDS_SQL_2

Survey									
Measured Depth (usft)	Inclination (°)	Azimuth (°)	Vertical Depth (usft)	+N/-S (usft)	+E/-W (usft)	Vertical Section (usft)	Dogleg Rate (°/100ft)	Build Rate (°/100ft)	Turn Rate (°/100ft)
767.00	8.35	235.44	765.06	-20.06	-33.20	-33.34	0.80	0.79	-0.92
888.00	8.70	236.58	884.72	-30.09	-48.07	-48.28	0.32	0.29	0.94
1,010.00	9.41	236.93	1,005.20	-40.61	-64.13	-64.42	0.58	0.58	0.29
1,130.00	9.71	238.51	1,123.53	-51.25	-80.98	-81.34	0.33	0.25	1.32
1,252.00	9.93	240.80	1,243.75	-61.76	-98.94	-99.38	0.37	0.18	1.88
1,372.00	9.80	242.73	1,361.97	-71.48	-117.05	-117.55	0.30	-0.11	1.61
1,498.00	9.54	243.70	1,486.18	-81.02	-135.94	-136.51	0.24	-0.21	0.77
1,624.00	9.49	245.63	1,610.45	-89.94	-154.76	-155.40	0.26	-0.04	1.53
1,750.00	9.36	245.46	1,734.75	-98.48	-173.54	-174.24	0.11	-0.10	-0.13
1,875.00	9.32	244.05	1,858.09	-107.13	-191.89	-192.65	0.19	-0.03	-1.13
2,001.00	9.05	243.17	1,982.47	-116.07	-209.91	-210.73	0.24	-0.21	-0.70
2,127.00	8.97	241.76	2,106.92	-125.19	-227.40	-228.29	0.19	-0.06	-1.12
2,252.00	8.18	238.42	2,230.52	-134.45	-243.56	-244.52	0.75	-0.63	-2.67
2,299.00	7.96	237.63	2,277.06	-137.95	-249.16	-250.14	0.52	-0.47	-1.68
2,395.00	7.56	239.92	2,372.18	-144.67	-260.24	-261.27	0.53	-0.42	2.39
2,520.00	7.25	240.97	2,496.14	-152.62	-274.25	-275.34	0.27	-0.25	0.84
2,647.00	8.84	251.26	2,621.89	-159.64	-290.50	-291.64	1.68	1.25	8.10
2,773.00	8.79	251.52	2,746.40	-165.81	-308.80	-309.98	0.05	-0.04	0.21
2,900.00	10.20	247.39	2,871.66	-173.21	-328.39	-329.62	1.23	1.11	-3.25
3,026.00	9.98	248.27	2,995.71	-181.54	-348.83	-350.12	0.21	-0.17	0.70
3,152.00	9.05	248.44	3,119.97	-189.22	-368.19	-369.53	0.74	-0.74	0.13
3,276.00	9.36	250.11	3,242.38	-196.24	-386.74	-388.13	0.33	0.25	1.35
3,402.00	9.98	249.50	3,366.59	-203.55	-406.60	-408.05	0.50	0.49	-0.48
3,529.00	9.93	249.85	3,491.68	-211.17	-427.19	-428.69	0.06	-0.04	0.28
3,654.00	9.63	250.03	3,614.86	-218.46	-447.13	-448.69	0.24	-0.24	0.14
3,780.00	10.37	238.42	3,738.96	-227.99	-466.70	-468.32	1.70	0.59	-9.21
3,906.00	9.71	240.45	3,863.03	-239.17	-485.61	-487.31	0.59	-0.52	1.61
4,030.00	8.00	243.79	3,985.54	-248.14	-502.45	-504.21	1.44	-1.38	2.69
4,156.00	7.65	244.31	4,110.37	-255.65	-517.87	-519.69	0.28	-0.28	0.41
4,280.00	7.60	245.63	4,233.27	-262.61	-532.78	-534.64	0.15	-0.04	1.06
4,407.00	7.74	227.70	4,359.16	-271.83	-546.75	-548.69	1.88	0.11	-14.12
4,470.00	7.47	226.73	4,421.60	-277.50	-552.87	-554.85	0.47	-0.43	-1.54
4,533.00	5.19	183.05	4,484.25	-283.15	-556.01	-558.02	8.18	-3.62	-69.33
4,597.00	6.73	130.23	4,547.95	-288.47	-553.30	-555.35	8.55	2.41	-82.53
4,660.00	12.35	124.69	4,610.05	-294.69	-544.93	-547.03	9.03	8.92	-8.79
4,723.00	17.67	123.02	4,670.88	-303.74	-531.37	-533.53	8.47	8.44	-2.65
4,785.00	21.45	118.54	4,729.29	-314.29	-513.51	-515.75	6.55	6.10	-7.23
4,849.00	25.19	110.54	4,788.07	-324.67	-490.46	-492.77	7.65	5.84	-12.50
4,912.00	28.92	103.16	4,844.18	-332.85	-463.06	-465.43	7.96	5.92	-11.71
4,975.00	32.75	96.13	4,898.28	-338.14	-431.26	-433.67	8.34	6.08	-11.16
5,038.00	33.67	88.83	4,951.02	-339.60	-396.84	-399.26	6.51	1.46	-11.59
5,102.00	37.19	86.99	5,003.16	-338.22	-359.78	-362.19	5.75	5.50	-2.87
5,165.00	42.59	87.25	5,051.48	-336.20	-319.44	-321.84	8.58	8.57	0.41



Survey Report

<b>Company:</b>	Spur Energy Partners, LLC	<b>Local Co-ordinate Reference:</b>	Well #11H
<b>Project:</b>	Eddy County, NM (NAD 83 - NME)	<b>TVD Reference:</b>	RKB = 20' @ 3996.00usft
<b>Site:</b>	Big 'n Tasty	<b>MD Reference:</b>	RKB = 20' @ 3996.00usft
<b>Well:</b>	#11H	<b>North Reference:</b>	Grid
<b>Wellbore:</b>	Wellbore #1	<b>Survey Calculation Method:</b>	Minimum Curvature
<b>Design:</b>	Wellbore #1	<b>Database:</b>	WBDS_SQL_2

Survey										
Measured Depth (usft)	Inclination (°)	Azimuth (°)	Vertical Depth (usft)	+N/-S (usft)	+E/-W (usft)	Vertical Section (usft)	Dogleg Rate (°/100ft)	Build Rate (°/100ft)	Turn Rate (°/100ft)	
5,228.00	47.25	87.25	5,096.08	-334.07	-275.02	-277.40	7.40	7.40	0.00	
5,291.00	52.31	86.37	5,136.74	-331.38	-227.00	-229.37	8.10	8.03	-1.40	
5,354.00	58.81	86.46	5,172.35	-328.13	-175.18	-177.52	10.32	10.32	0.14	
5,385.00	59.82	86.29	5,188.17	-326.44	-148.57	-150.90	3.29	3.26	-0.55	
5,417.00	59.25	86.29	5,204.40	-324.66	-121.05	-123.37	1.78	-1.78	0.00	
5,449.00	57.36	86.46	5,221.21	-322.94	-93.87	-96.18	5.92	-5.91	0.53	
5,480.00	56.70	86.11	5,238.08	-321.25	-67.92	-70.22	2.33	-2.13	-1.13	
5,512.00	57.49	86.37	5,255.46	-319.49	-41.11	-43.40	2.56	2.47	0.81	
5,544.00	58.29	86.55	5,272.47	-317.82	-14.06	-16.33	2.54	2.50	0.56	
5,575.00	59.69	86.90	5,288.44	-316.30	12.47	10.20	4.62	4.52	1.13	
5,607.00	62.86	87.69	5,303.82	-314.98	40.49	38.24	10.14	9.91	2.47	
5,608.60	63.00	87.75	5,304.55	-314.92	41.92	39.67	9.32	8.69	3.80	
<b>FINAL #11H FTP: 5608.60' MD, 100' FEL</b>										
5,635.73	65.36	88.76	5,316.37	-314.18	66.33	64.08	9.32	8.70	3.72	
<b>Big 'n Tasty #11H FTP: 100' FWL</b>										
5,670.00	68.35	89.98	5,329.83	-313.84	97.83	95.58	9.32	8.73	3.56	
5,733.00	75.38	89.80	5,349.43	-313.72	157.66	155.41	11.16	11.16	-0.29	
5,796.00	81.32	88.48	5,362.15	-312.79	219.33	217.08	9.65	9.43	-2.10	
5,819.42	83.33	88.05	5,365.28	-312.09	242.53	240.29	8.77	8.59	-1.82	
<b>Big 'n Tasty #11H LP</b>										
5,859.00	86.73	87.34	5,368.70	-310.50	281.92	279.69	8.77	8.59	-1.80	
5,935.00	89.05	86.99	5,371.50	-306.74	357.77	355.57	3.09	3.05	-0.46	
6,055.00	89.58	88.75	5,372.94	-302.29	477.67	475.50	1.53	0.44	1.47	
6,175.00	90.46	89.10	5,372.89	-300.03	597.65	595.49	0.79	0.73	0.29	
6,296.00	88.84	89.63	5,373.63	-298.69	718.64	716.48	1.41	-1.34	0.44	
6,418.00	89.05	90.06	5,375.88	-298.36	840.62	838.46	0.39	0.17	0.35	
6,537.00	89.89	89.89	5,376.98	-298.31	959.61	957.45	0.72	0.71	-0.14	
6,659.00	88.48	91.03	5,378.72	-299.29	1,081.59	1,079.42	1.49	-1.16	0.93	
6,780.00	89.32	91.73	5,381.04	-302.20	1,202.53	1,200.34	0.90	0.69	0.58	
6,901.00	88.92	90.24	5,382.90	-304.28	1,323.49	1,321.28	1.27	-0.33	-1.23	
7,022.00	90.20	91.03	5,383.83	-305.62	1,444.48	1,442.25	1.24	1.06	0.65	
7,145.00	89.41	89.63	5,384.25	-306.33	1,567.47	1,565.24	1.31	-0.64	-1.14	
7,272.00	88.66	88.66	5,386.38	-304.44	1,694.44	1,692.22	0.97	-0.59	-0.76	
7,398.00	89.19	88.75	5,388.75	-301.59	1,820.38	1,818.18	0.43	0.42	0.07	
7,524.00	90.95	90.24	5,388.59	-300.48	1,946.37	1,944.17	1.83	1.40	1.18	
7,650.00	88.53	88.04	5,389.17	-298.59	2,072.34	2,070.15	2.60	-1.92	-1.75	
7,776.00	88.40	87.16	5,392.54	-293.32	2,198.18	2,196.02	0.71	-0.10	-0.70	
7,903.00	88.97	87.34	5,395.46	-287.22	2,325.00	2,322.88	0.47	0.45	0.14	
8,029.00	87.08	87.52	5,399.80	-281.58	2,450.79	2,448.71	1.51	-1.50	0.14	
8,154.00	88.00	89.54	5,405.16	-278.38	2,575.63	2,573.57	1.77	0.74	1.62	
8,280.00	89.49	91.03	5,407.92	-279.00	2,701.59	2,699.52	1.67	1.18	1.18	
8,406.00	90.29	92.26	5,408.17	-282.62	2,827.53	2,825.44	1.16	0.63	0.98	
8,533.00	89.71	91.82	5,408.17	-287.14	2,954.45	2,952.32	0.57	-0.46	-0.35	
8,660.00	89.63	91.47	5,408.90	-290.79	3,081.40	3,079.24	0.28	-0.06	-0.28	



Survey Report

<b>Company:</b>	Spur Energy Partners, LLC	<b>Local Co-ordinate Reference:</b>	Well #11H
<b>Project:</b>	Eddy County, NM (NAD 83 - NME)	<b>TVD Reference:</b>	RKB = 20' @ 3996.00usft
<b>Site:</b>	Big 'n Tasty	<b>MD Reference:</b>	RKB = 20' @ 3996.00usft
<b>Well:</b>	#11H	<b>North Reference:</b>	Grid
<b>Wellbore:</b>	Wellbore #1	<b>Survey Calculation Method:</b>	Minimum Curvature
<b>Design:</b>	Wellbore #1	<b>Database:</b>	WBDS_SQL_2

Survey										
Measured Depth (usft)	Inclination (°)	Azimuth (°)	Vertical Depth (usft)	+N/-S (usft)	+E/-W (usft)	Vertical Section (usft)	Dogleg Rate (°/100ft)	Build Rate (°/100ft)	Turn Rate (°/100ft)	
8,785.00	87.08	90.15	5,412.48	-292.55	3,206.32	3,204.14	2.30	-2.04	-1.06	
8,910.00	88.70	89.54	5,417.09	-292.21	3,331.23	3,329.05	1.38	1.30	-0.49	
9,037.00	91.34	89.19	5,417.04	-290.81	3,458.21	3,456.04	2.10	2.08	-0.28	
9,162.00	91.65	89.01	5,413.78	-288.84	3,583.15	3,580.99	0.29	0.25	-0.14	
9,288.00	90.37	89.27	5,411.56	-286.95	3,709.12	3,706.97	1.04	-1.02	0.21	
9,414.00	90.95	88.57	5,410.11	-284.58	3,835.08	3,832.95	0.72	0.46	-0.56	
9,540.00	89.76	88.57	5,409.33	-281.43	3,961.04	3,958.93	0.94	-0.94	0.00	
9,665.00	88.13	88.48	5,411.63	-278.22	4,085.97	4,083.88	1.31	-1.30	-0.07	
9,790.00	88.35	88.57	5,415.47	-275.00	4,210.87	4,208.80	0.19	0.18	0.07	
9,916.00	89.14	88.31	5,418.23	-271.57	4,336.80	4,334.74	0.66	0.63	-0.21	
10,041.00	89.27	89.27	5,419.96	-268.93	4,461.75	4,459.72	0.77	0.10	0.77	
10,168.00	89.85	89.54	5,420.94	-267.61	4,588.74	4,586.71	0.50	0.46	0.21	
10,294.00	90.37	90.15	5,420.70	-267.27	4,714.74	4,712.71	0.64	0.41	0.48	
10,420.00	88.97	89.80	5,421.42	-267.22	4,840.74	4,838.70	1.15	-1.11	-0.28	
10,546.00	89.58	89.89	5,423.02	-266.88	4,966.72	4,964.69	0.49	0.48	0.07	
10,670.00	89.98	89.89	5,423.49	-266.64	5,090.72	5,088.68	0.32	0.32	0.00	
<b>FINAL #11H LTP: 10700.75' MD, 100' FWL - Big 'n Tasty #11H LTP: 100' FEL</b>										
10,738.00	89.98	89.89	5,423.52	-266.51	5,158.72	5,156.68	0.00	0.00	0.00	
<b>TD: Y= 677623.69 / X= 695296.12 - Final Station Closure Distance= 5165.60 /Direction= 92.96 - Projection to Bit: 10738.0</b>										

Design Targets										
Target Name	- hit/miss target	Dip Angle (°)	Dip Dir. (°)	TVD (usft)	+N/-S (usft)	+E/-W (usft)	Northing (usft)	Easting (usft)	Latitude	Longitude
FINAL #11H FTP: 560	- actual wellpath hits target center	0.00	0.00	5,304.55	-314.92	41.92	677,575.27	690,179.32	32.8617378	-103.8485939
	- Point									
FINAL #11H LTP: 107	- actual wellpath misses target center by 30.75usft at 10670.00usft MD (5423.49 TVD, -266.64 N, 5090.72 E)	0.00	0.00	5,423.50	-266.58	5,121.47	677,623.61	695,258.87	32.8618055	-103.8320509
	- Point									
FINAL #11H TD: 1073	- actual wellpath hits target center	0.00	0.01	5,423.52	-266.51	5,158.72	677,623.69	695,296.12	32.8618052	-103.8319296
	- Point									

Design Annotations					
Measured Depth (usft)	Vertical Depth (usft)	Local Coordinates		Comment	
		+N/-S (usft)	+E/-W (usft)		
10,738.00	5,423.52	-266.51	5,158.72	TD: Y= 677623.69 / X= 695296.12	
10,738.00	5,423.52	-266.51	5,158.72	Final Station Closure Distance= 5165.60 /Direction= 92.96	
10,738.00	5,423.52	-266.51	5,158.72	Projection to Bit: 10738.00' MD/ 5423.52' TVD	
10,738.00	5,423.52	-266.51	5,158.72	TD: Latitude= 32.8618052 / Longitude= -103.8319296	



Survey Report



<b>Company:</b>	Spur Energy Partners, LLC	<b>Local Co-ordinate Reference:</b>	Well #11H
<b>Project:</b>	Eddy County, NM (NAD 83 - NME)	<b>TVD Reference:</b>	RKB = 20' @ 3996.00usft
<b>Site:</b>	Big 'n Tasty	<b>MD Reference:</b>	RKB = 20' @ 3996.00usft
<b>Well:</b>	#11H	<b>North Reference:</b>	Grid
<b>Wellbore:</b>	Wellbore #1	<b>Survey Calculation Method:</b>	Minimum Curvature
<b>Design:</b>	Wellbore #1	<b>Database:</b>	WBDS_SQL_2

Checked By: \_\_\_\_\_ Approved By: \_\_\_\_\_ Date: \_\_\_\_\_





---

---

I **Larry Wright**, certify that I am employed by **Wellbenders Directional Services**. That I did on the day(s) of **04/14/21** thru **04/22/21** conduct or supervise the taking of a **MWD Survey** from a depth of **120'** to a depth of **10738'**; that the data is true, correct, complete and within the limitations of the tool as set forth by **Wellbenders Directional Services**; that I am authorized and qualified to make this report; that this survey was conducted at the request of **Spur Energy Partners** for the **Big 'n Tasty 11H** API No. **30-015-47697** in **Eddy County, New Mexico**; and that I have reviewed this report and find that it conforms to the principles and procedures as set forth by **Wellbenders Directional Services**.

Larry Wright

---

---

1125 Beach Airport Rd, Conroe, Texas  
77301



Company: Spur Energy Partners, LLC  
 Project: Eddy County, NM (NAD 83 - NME)  
 Site: Big 'n Tasty  
 Well: #11H  
 Wellbore: Wellbore #1  
 Rig:  
 Design: Plan #3 / 9:37, April 22 2021

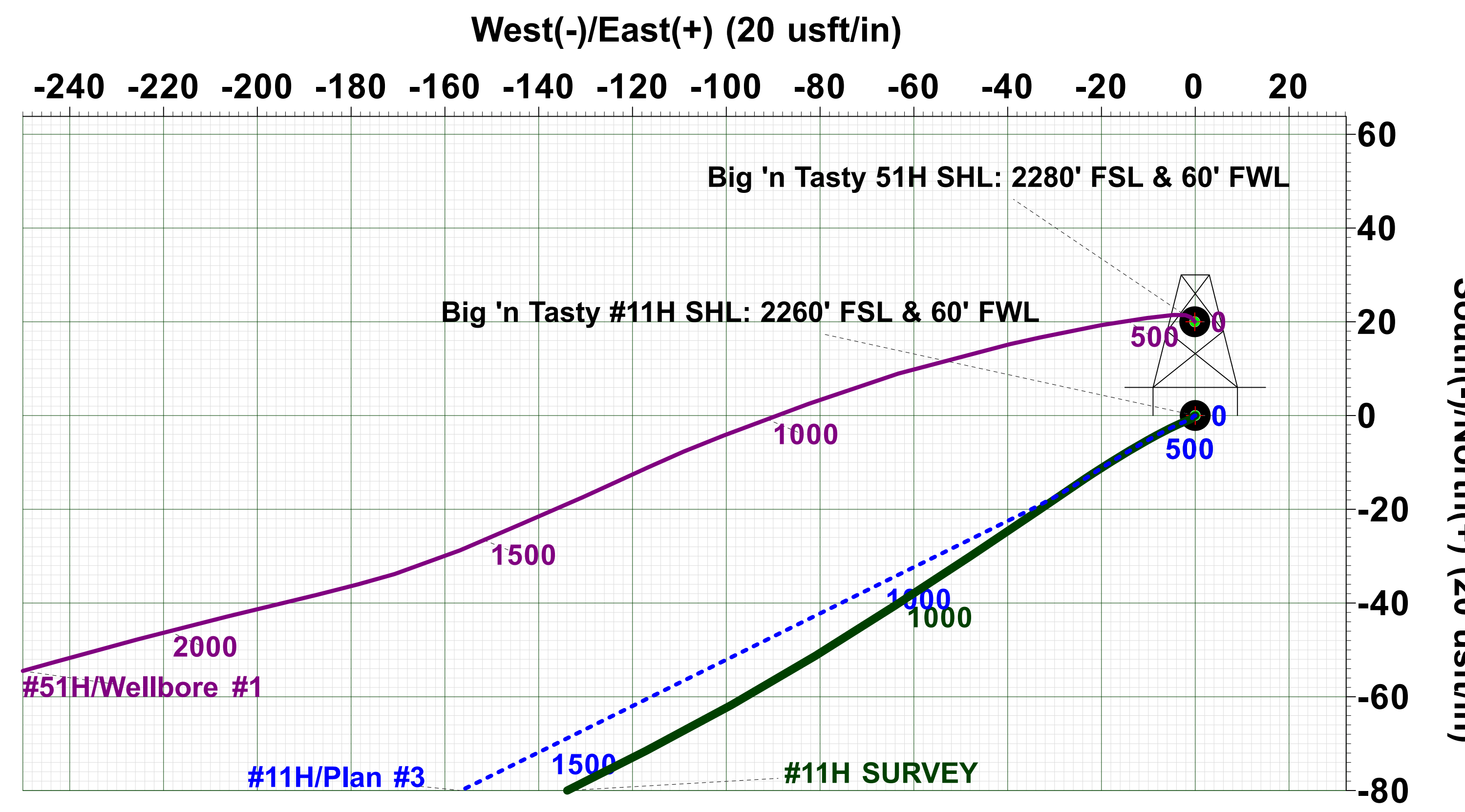
WELL DETAILS: #11H

RKB = 20' @ 3996.00usft  
 3976.00

+N/-S	+E/-W	Northing	Easting	Latitude	Longitude
0.00	0.00	677890.20	690137.40	32.8626039	-103.8487258

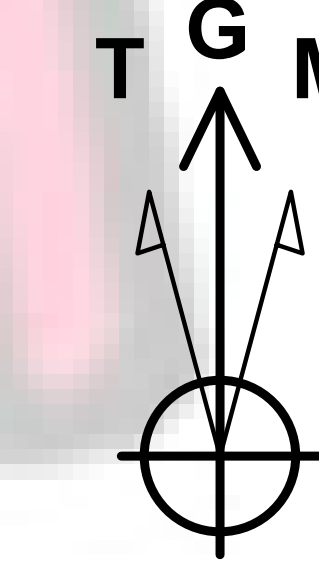
SECTION DETAILS

Sec	MD	Inc	Azi	TVD	+N/-S	+E/-W	Dleg	Vsect
1	683.00	7.69	236.21	681.88	-13.48	-23.50	0.00	-23.60
2	769.81	9.04	243.73	767.76	-19.73	-34.45	2.00	-34.59
3	4520.56	9.04	243.73	4471.91	-280.63	-563.00	0.00	-565.00
4	5373.09	60.00	89.59	5193.27	-311.37	-211.39	8.00	-213.61
5	5573.09	60.00	89.59	5293.27	-310.14	-38.19	0.00	-40.41
6	5866.70	89.36	89.59	5370.00	-308.14	241.89	10.00	239.68
7	10746.74	89.36	89.59	5424.44	-273.36	5121.50	0.00	5119.41
8	10796.74	89.36	89.59	5425.00	-273.00	5171.50	0.00	5169.41



DESIGN TARGET DETAILS

Name	TVD	+N/-S	+E/-W	Northing	Easting	Latitude	Longitude
Big 'n Tasty #11H SHL: 2260' FSL & 60' FWL	0.00	0.00	0.00	677890.20	690137.40	32.8626039	-103.8487258
FINAL #11H FTP: 5608.60' MD, 100' FEL	5304.55	-314.92	41.92	677575.28	690179.32	32.8617378	-103.8485939
Big 'n Tasty #11H FTP: 100' FWL	5370.00	-309.50	41.90	677580.70	690179.30	32.8617527	-103.8485939
Big 'n Tasty #11H LP	5370.00	-308.14	241.89	677582.06	690379.29	32.8617539	-103.8479426
FINAL #11H LTP: 10700.75' MD, 100' FWL	5423.50	-266.58	5121.47	677623.62	695258.87	32.8618054	-103.8320509
FINAL #11H TD: 10738' MD, 63' FWL	5423.52	-266.51	5158.72	677623.69	695296.12	32.8618052	-103.8319296
Big 'n Tasty #11H LTP: 100' FEL	5424.44	-273.30	5121.50	677616.90	695258.90	32.8617870	-103.8320510
Big 'n Tasty #11H PBHL: 1950' FSL & 50' FEL	5425.00	-273.00	5171.50	677617.20	695308.90	32.8617871	-103.8318881



Azimuths to Grid North  
 True North: -0.26°  
 Magnetic North: 6.48°  
 Magnetic Field  
 Strength: 47856.2snT  
 Dip Angle: 60.44°  
 Date: 4/14/2021  
 Model: IGRF2020

**CORRECTION REFERENCE DATA:**  
 To convert a Magnetic Direction to a Grid Direction, Add 6.481°  
 To convert a True Direction to a Grid Direction, Subtract 0.263°  
 To convert a Magnetic Direction to a True Direction, Add 6.744° East  
 Magnetic Declination: 6.744°  
 Grid Convergence: 0.263° West  
 Magnetic Dip Angle: 60.445°  
 Magnetic Field Strength: 47856.17883012nT

PROJECT DETAILS: Eddy County, NM (NAD 83 - NME)

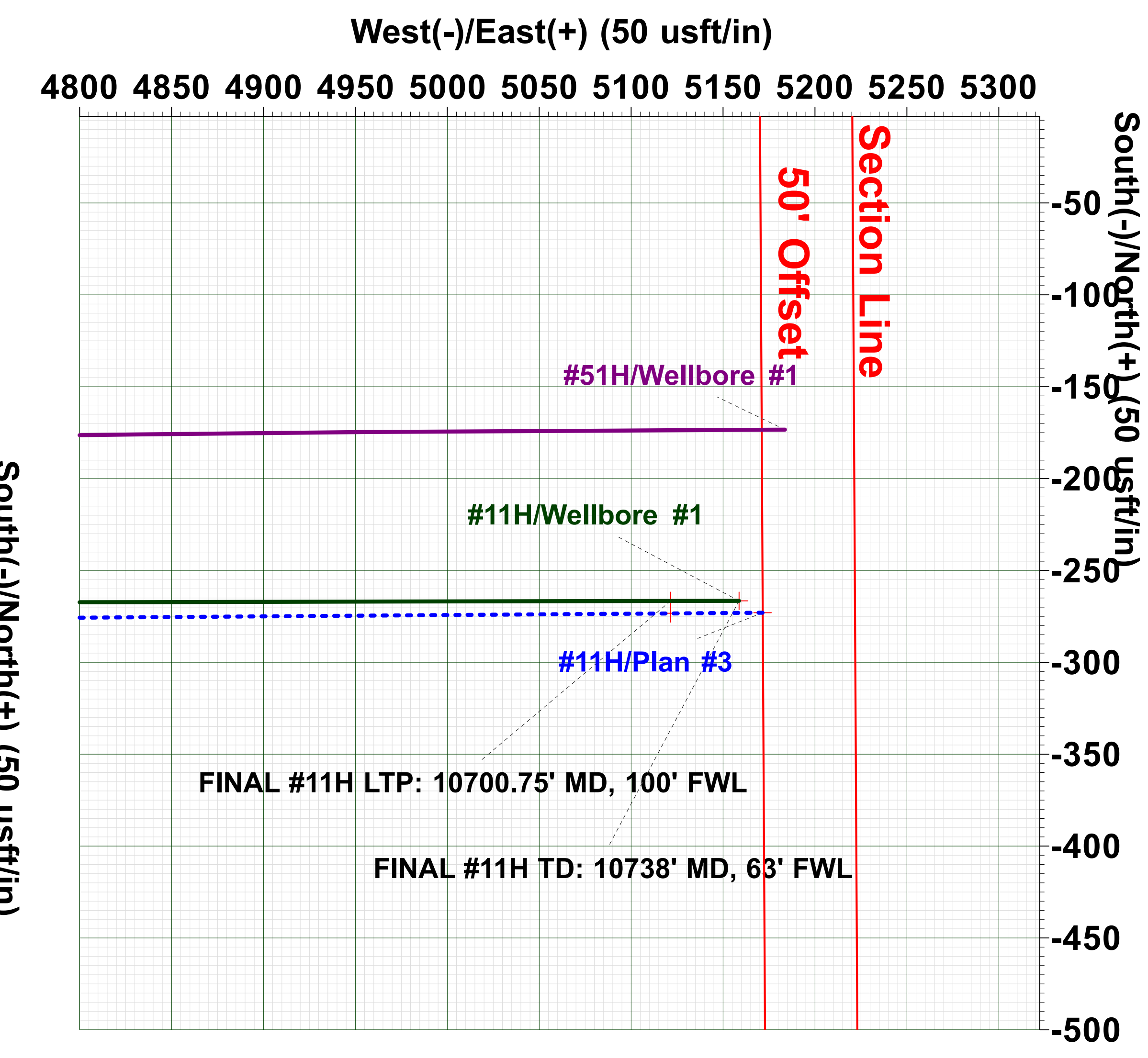
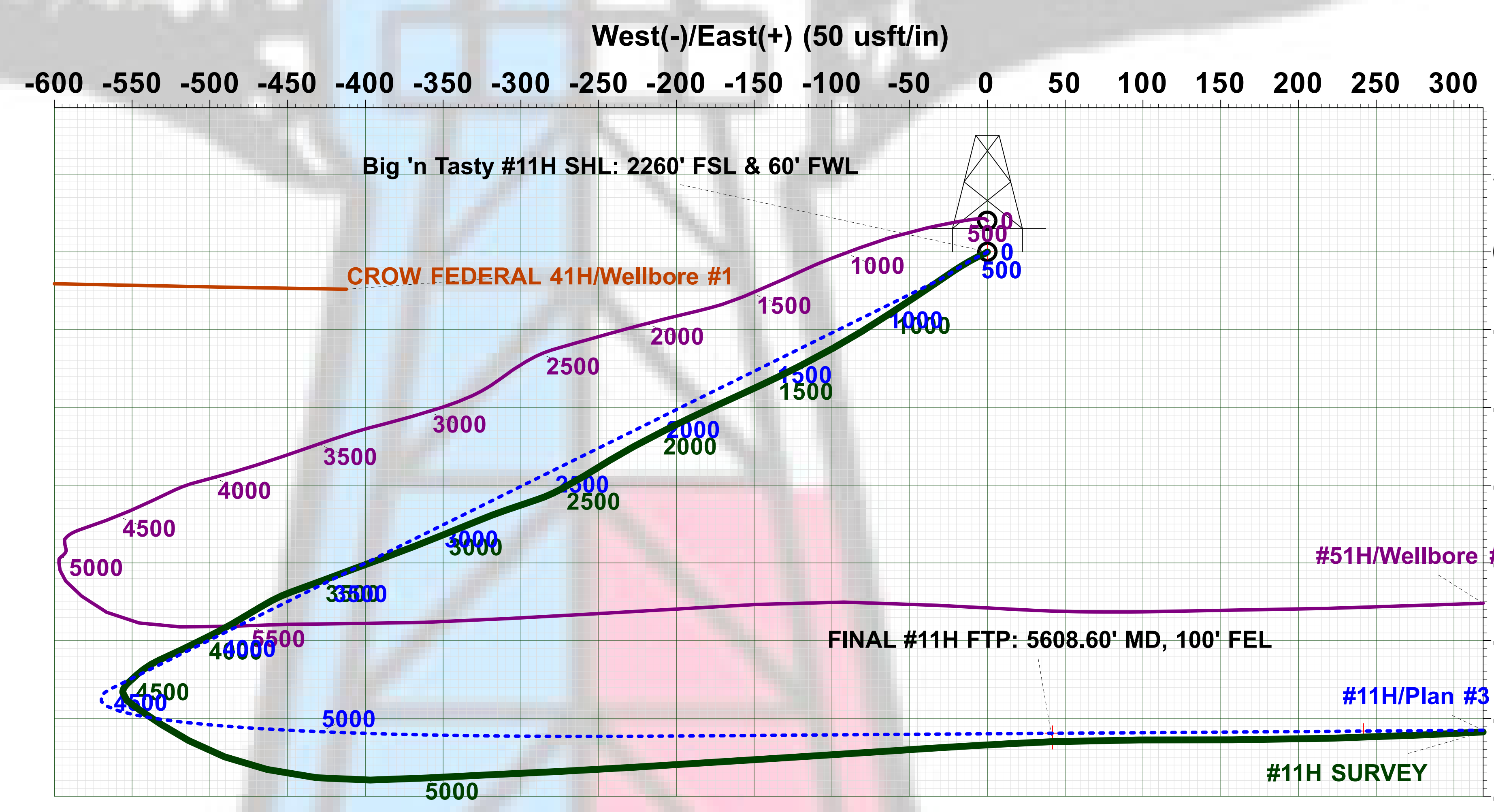
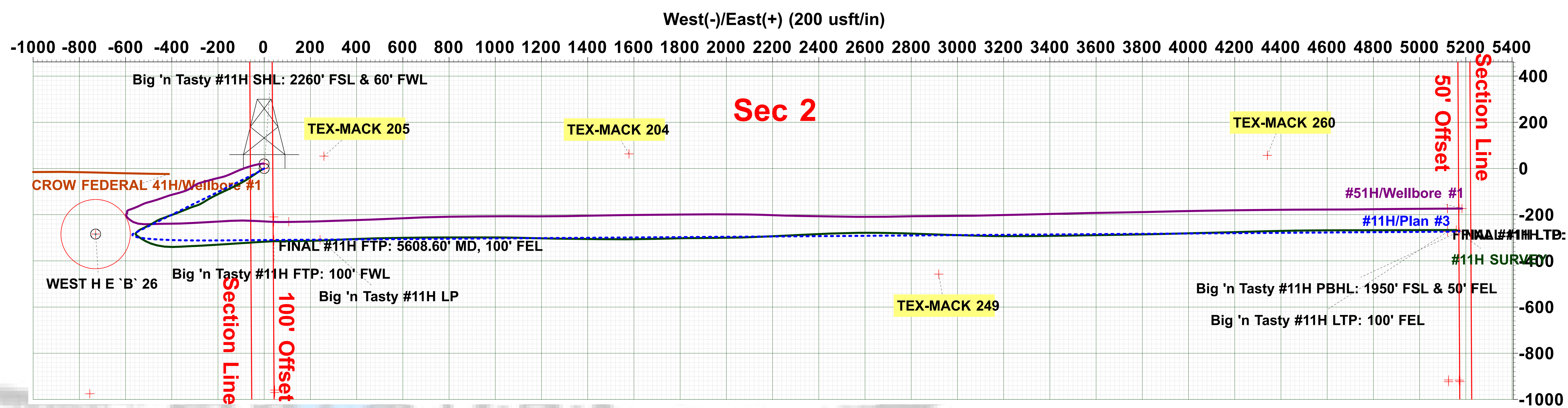
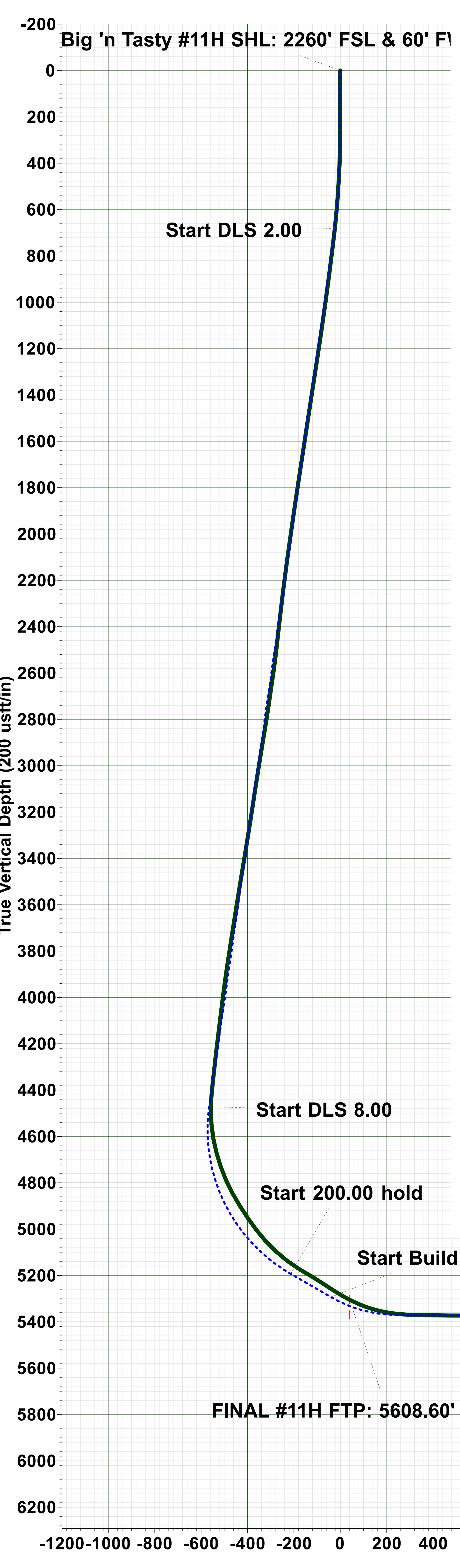
Geodetic System: US State Plane 1983  
 Datum: North American Datum 1983  
 Ellipsoid: GRS 1980  
 Zone: New Mexico Eastern Zone  
 System Datum: Mean Sea Level



**Disclaimer:**  
 All Plan Details, boundary lines and offset well location/ survey data is provided by customer and subject to customer approval.

Plan: Plan #3 (#11H/Wellbore #1)

Created By: Matthew May Date: 9:37, April 22 2021



Vertical Section at 89.59° (200 usft/in)

Intent  As Drilled

API #

Operator Name:	Property Name:	Well Number
<input type="text"/>	<input type="text"/>	<input type="text"/>

Kick Off Point (KOP)

UL	Section	Township	Range	Lot	Feet	From N/S	Feet	From E/W	County
Latitude					Longitude				NAD

First Take Point (FTP)

UL	Section	Township	Range	Lot	Feet	From N/S	Feet	From E/W	County
Latitude					Longitude				NAD

Last Take Point (LTP)

UL	Section	Township	Range	Lot	Feet	From N/S	Feet	From E/W	County
Latitude					Longitude				NAD

Is this well the defining well for the Horizontal Spacing Unit?

Is this well an infill well?

If infill is yes please provide API if available, Operator Name and well number for Defining well for Horizontal Spacing Unit.

API #

Operator Name:	Property Name:	Well Number
<input type="text"/>	<input type="text"/>	<input type="text"/>

KZ 06/29/2018

**District I**  
 1625 N. French Dr., Hobbs, NM 88240  
 Phone:(575) 393-6161 Fax:(575) 393-0720

**District II**  
 811 S. First St., Artesia, NM 88210  
 Phone:(575) 748-1283 Fax:(575) 748-9720

**District III**  
 1000 Rio Brazos Rd., Aztec, NM 87410  
 Phone:(505) 334-6178 Fax:(505) 334-6170

**District IV**  
 1220 S. St Francis Dr., Santa Fe, NM 87505  
 Phone:(505) 476-3470 Fax:(505) 476-3462

**State of New Mexico**  
**Energy, Minerals and Natural Resources**  
**Oil Conservation Division**  
**1220 S. St Francis Dr.**  
**Santa Fe, NM 87505**

ACKNOWLEDGMENTS

Action 29558

**ACKNOWLEDGMENTS**

Operator: Spur Energy Partners LLC 9655 Katy Freeway Houston, TX 77024	OGRID: 328947
	Action Number: 29558
	Action Type: [C-104] Completion Packet (C-104C)

**ACKNOWLEDGMENTS**

<input checked="" type="checkbox"/>	I hereby certify that the required Water Use Report has been, or will be, submitted for this wells completion.
<input checked="" type="checkbox"/>	I hereby certify that the required FracFocus disclosure has been, or will be, submitted for this wells completion.

**District I**  
 1625 N. French Dr., Hobbs, NM 88240  
 Phone:(575) 393-6161 Fax:(575) 393-0720

**District II**  
 811 S. First St., Artesia, NM 88210  
 Phone:(575) 748-1283 Fax:(575) 748-9720

**District III**  
 1000 Rio Brazos Rd., Aztec, NM 87410  
 Phone:(505) 334-6178 Fax:(505) 334-6170

**District IV**  
 1220 S. St Francis Dr., Santa Fe, NM 87505  
 Phone:(505) 476-3470 Fax:(505) 476-3462

**State of New Mexico**  
**Energy, Minerals and Natural Resources**  
**Oil Conservation Division**  
**1220 S. St Francis Dr.**  
**Santa Fe, NM 87505**

CONDITIONS  
 Action 29558

**CONDITIONS**

Operator: Spur Energy Partners LLC 9655 Katy Freeway Houston, TX 77024	OGRID: 328947
	Action Number: 29558
	Action Type: [C-104] Completion Packet (C-104C)

**CONDITIONS**

Created By	Condition	Condition Date
ksimmons	RT C-104 expires 08/26/2021; submit all drilling, casing, and completion sundries/reports.	7/27/2021