

Submit 1 Copy To Appropriate District Office  
 District I – (575) 393-6161  
 1625 N. French Dr., Hobbs, NM 88240  
 District II – (575) 748-1283  
 811 S. First St., Artesia, NM 88210  
 District III – (505) 334-6178  
 1000 Rio Brazos Rd., Aztec, NM 87410  
 District IV – (505) 476-3460  
 1220 S. St. Francis Dr., Santa Fe, NM 87505

State of New Mexico  
 Energy, Minerals and Natural Resources

Form C-103  
 Revised August 1, 2011

OIL CONSERVATION DIVISION  
 1220 South St. Francis Dr.  
 Santa Fe, NM 87505

WELL API NO.  
 30-025-10272

5. Indicate Type of Lease

STATE ☐ FEE ☒

6. State Oil & Gas Lease No.

7. Lease Name or Unit Agreement Name  
 E.W. WALDEN (26467)

8. Well Number #004

9. OGRID Number  
 873

10. Pool name or Wildcat  
 PADDOCK (49210); BLINEBRY O&G(666)

SUNDRY NOTICES AND REPORTS ON WELLS

(DO NOT USE THIS FORM FOR PROPOSALS TO DRILL OR TO DEEPEN OR PLUG BACK TO A DIFFERENT RESERVOIR. USE "APPLICATION FOR PERMIT" (FORM C-101) FOR SUCH PROPOSALS.)

1. Type of Well: Oil Well ☒ Gas Well ☐ Other ☐

2. Name of Operator  
 APACHE CORPORATION

3. Address of Operator  
 303 VETERANS AIRPARK LANE, STE 3000, MIDLAND, TX 79705

4. Well Location

Unit Letter L : 1980 feet from the SOUTH line and 660 feet from the WEST line  
 Section 15 Township 22S Range 37E NMPM LEA County

11. Elevation (Show whether DR, RKB, RT, GR, etc.)  
 3400' GL

12. Check Appropriate Box to Indicate Nature of Notice, Report or Other Data

NOTICE OF INTENTION TO:

PERFORM REMEDIAL WORK ☐ PLUG AND ABANDON ☐  
 TEMPORARILY ABANDON ☐ CHANGE PLANS ☐  
 PULL OR ALTER CASING ☐ MULTIPLE COMPL ☐  
 DOWNHOLE COMMINGLE ☐

SUBSEQUENT REPORT OF:

REMEDIAL WORK ☐ ALTERING CASING ☐  
 COMMENCE DRILLING OPNS. ☐ P AND A ☒  
 CASING/CEMENT JOB ☐ PNR

OTHER: ☐

OTHER: ☐

13. Describe proposed or completed operations. (Clearly state all pertinent details, and give pertinent dates, including estimated date of starting any proposed work). SEE RULE 19.15.7.14 NMAC. For Multiple Completions: Attach wellbore diagram of proposed completion or recompletion.

6/17/21-NOTIFY NMOCD **MIRU**

6/18/21-TAGGED EXISTING CIBP@5095'. SPOTTED 25SX OF CLASS "C" CEMENT FROM 5095'-4900'.

6/21/21-TAGGED@4756'. PERFD@2800'. SQUEEZED 120SX OF CLASS "C" CEMENT FROM 2800'-2370'.

WOC&TAGGED@2265'. PERFD@1250'. SQUEEZED 60SX OF CLASS "C" CEMENT FROM 1250'-1050'.

6/22/21-TAGGED@975'. PERFD@300'. CIRCULATED 200SX OF CLASS "C" CEMENT FROM 300'-SURFACE. CEMENT VERIFIED AT SURFACE.

CUTOFF WELLHEAD, ANCHORS 3' BELOW SURFACE AND INSTALL DRYHOLE MARKER. TURN OVER FOR RECLAMATION.

CLOSED LOOP CONTAINMENT SYSTEM WILL BE USED FOR FLUIDS.

Spud Date:

Rig Release Date:

I hereby certify that the information above is true and complete to the best of my knowledge and belief.

SIGNATURE

TITLE

DATE

Type or print name

E-mail address:

PHONE:

For State Use Only

APPROVED BY:

TITLE

Compliance Officer A

DATE 8/5/21

Conditions of Approval (if any):

Authorized by: **Michelle L. L. Tech. Sec. Quinn Banks Reclamation Foreman - Apache Corp.**

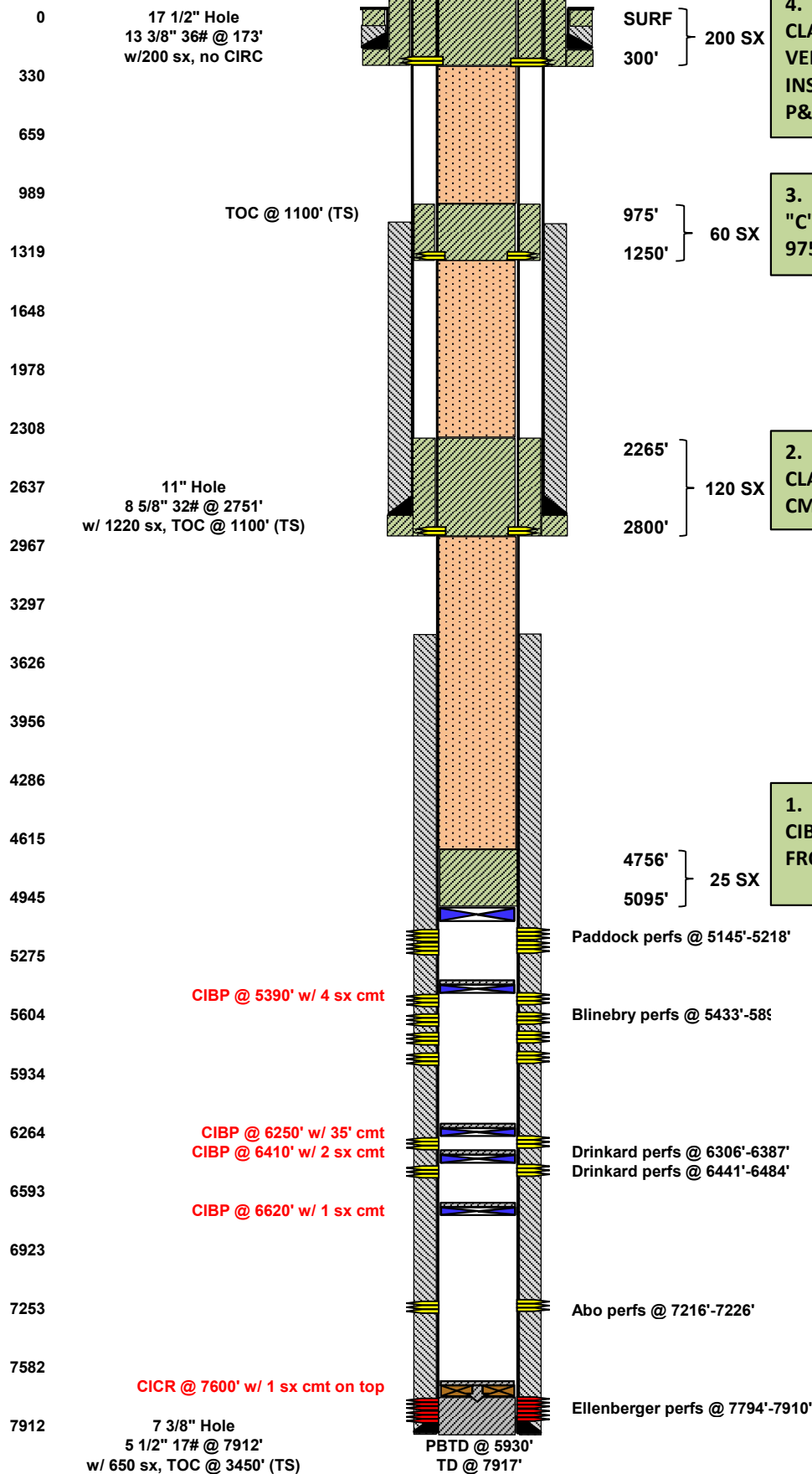


## WELL BORE INFO.

LEASE NAME	E.W. Walden
WELL #	#004
API #	30.025.10272
COUNTY	LEA, NM

DEPTH SX/CMT

## FINAL P&amp;A WB DIAGRAM



4. PUH & PERF'D @ 300', SQZD/CIRC 200 SX CLASS "C" CMT FROM 300' TO SURF. CMT VERIFIED @ SURF. RDMO, CUT OFF WH, INSTALL DRY HOLE MARKER, CLEAN LOCATION, P&A COMPLETED 6-22-21.

WATER BOARD, SURF SHOE, & SURF PLUG

3. PUH & PERF'D @ 1250' & SQZD 60 SX CLASS "C" CMT FROM 1250'-1050', TAGGED CMT @ 975'.

TOP OF SALT

2. PUH & PERF'D @ 2800' & SSQZD 120 SX CLASS "C" CMT FROM 2800'-2370', TAGGED CMT @ 2265'.

INTERM SHOE, TOP OF SALT, & YATES

1. MIRU P&A RIG. RIH W/TBG & VERIFIED CIBP @ 5095', SPOTTED 25 SX CLASS "C" CMT FROM 5095'-4900', TAGGED CMT @ 4756'.

PADDOCK PERFS

Paddock perfs @ 5145'-5218'

Blinbry perfs @ 5433'-585'

Drinkard perfs @ 6306'-6387'  
Drinkard perfs @ 6441'-6484'

Abo perfs @ 7216'-7226'

Ellenberger perfs @ 7794'-7910'

**District I**  
1625 N. French Dr., Hobbs, NM 88240  
Phone:(575) 393-6161 Fax:(575) 393-0720  
**District II**  
811 S. First St., Artesia, NM 88210  
Phone:(575) 748-1283 Fax:(575) 748-9720  
**District III**  
1000 Rio Brazos Rd., Aztec, NM 87410  
Phone:(505) 334-6178 Fax:(505) 334-6170  
**District IV**  
1220 S. St Francis Dr., Santa Fe, NM 87505  
Phone:(505) 476-3470 Fax:(505) 476-3462

State of New Mexico  
Energy, Minerals and Natural Resources  
Oil Conservation Division  
1220 S. St Francis Dr.  
Santa Fe, NM 87505

CONDITIONS  
  
Action 36369

CONDITIONS

Operator: APACHE CORPORATION 303 Veterans Airpark Ln Midland, TX 79705	OGRID: 873
	Action Number: 36369
	Action Type: [C-103] Sub. Plugging (C-103P)

CONDITIONS

Created By	Condition	Condition Date
kfortner	None	8/5/2021